



DE VALK
YACHT BROKERS



SUNBEAM 34.2



DE VALK
YACHT BROKERS

SUNBEAM 34.2

BROKER'S COMMENTS

If you know sailing, you know the Sunbeam name. Built in Austria to standards that rival the finest Scandinavian yards, the Sunbeam 34 is a world apart from the volume-produced fiberglass that fills most Caribbean waters. A rare find in the Caribbean, the Sunbeam 34 is the quiet antidote to mass production yachts. Fully equipped for blue-water sailing and genuine off-grid living aboard, this is not a dressed up charter boat. She's the real thing on your dream location already. This a genuine find for the discerning sailor who refuses to compromise. Location Bonaire, local agent available.

Marc Weijenberg

SPECIFICATIONS

Dimensions	10.60 x 3.35 x 1.90 (m)	Builder	Sunbeam Schochl
Built	2008	Cabins	2
Material	GRP	Berths	6
Engine(s)	1 x Yanmar 3YM30 diesel	Hp/Kw	29.00 (hp), 21.34 (kw)
Asking price	\$ 110.000 (VAT Not paid)	Lying	Caribbean

CONTACT

Sales office	De Valk Thuishaven	Telephone	+31 35 5829042
Address	Marinaweg 8 (postal address) 1361 AC Almere NL	E-mail	thuishaven@devalk.nl

DISCLAIMER

These particulars are given in good faith as supplied but cannot be guaranteed.



SUNBEAM 34.2

GENERAL

Model	SUNBEAM 34.2
Type	sailing yacht
LOA (m)	10,60
LWL (m)	9,61
Beam (m)	3,35
Draft (m)	1,90
Air draft min (m)	16,00
Headroom (m)	1,90
Year built	2008
Builder	Sunbeam Schochl
Country	Austria
Designer	Georg Nissen
Displacement (t)	6
Ballast (tonnes)	2
CE norm	A
Hull material	GRP
Hull colour	white
Hull shape	round-bilged
Keel type	fin keel
Superstructure material	GRP
Deck material	GRP
Deck finish	teak
Cockpit deck finish	teak
Deckhatch	yes
Portholes	yes
Fuel tank (litre)	stainless steel 120
Freshwater tank (litre)	stainless steel 145
Blackwater tank (litre)	stainless steel 56
Blackwater tank extraction	deck extraction + uw line
Wheel steering	yes



SUNBEAM 34.2

Emergency tiller	yes
Extra info	Teak decks are glued, cover for wheel pedestal.
Extra info	yes

ACCOMMODATION

Cabins	2
Berths	6
Interior	mahogany
Floor	teak and holly
Saloon	yes
Headroom saloon (m)	1,90
Heating	diesel ducted hot air Webasto
Aft Cabin	yes
Galley	yes
Countertop	Corian
Sink	stainless steel 1 x
Cooker	calor gas 2-burner
Oven	calor gas
Fridge	12v (keel-cooled compressor)
Hot water system	220V + engine Isothemp 18ltr
Water pressure system	electrical
Owners cabin	double bed
Bed length (m)	2,00 x 1,75
Wardrobe	hanging and shelves
Bathroom	shared 1
Toilet	shared
Toilet system	manual
Wash basin	in the bathroom
Shower	separate
Guest cabin 1	v-bed



MACHINERY

No of engines	1
Make	Yanmar
Type	3YM30
HP	29
kW	21.34
Fuel	diesel
Year installed	2008
Maximum speed (kn)	7,5
Cruising speed (kn)	6,5
Consumption (l/hr)	3,5
Engine cooling system	freshwater heat exchanger
Drive	sail-drive
Saildrive seal	Yanmar twin seal (2008)
Engine controls	bowden cable
Gearbox	mechanical Yanmar SD25
Bowthruster	electric
Exhaust	watercooled
Propeller type	folding 3-blade
Shaft lubrication	oilbath
Manual bilge pump	yes
Electric bilge pump	yes
Electrical installation	12v DC / 220v AC(50Hz)
Start battery	1 x 85ah (2025)
Service battery	150ah (Lithium 2025)
Battery charger	Mastervolt 12v/50amp
Inverter	12v->220v-500watt
Solar panel	4 x 400 watt with MPPT controllers
Shorepower	with cable
Watermaker	Rainman portable
Extra info	spare Gori propeller, Yanmar exhaust elbow replaced 2025



NAVIGATION

Compass	yes
Forw. looking depth sounder	Raymarine ST60
Windset	Raymarine ST60
VHF	Garmin 115 AIS (transponder)
VHF handheld	yes
Autopilot	Raymarine
Radar	B&G
Plotter/GPS	B&G Zeus 3S
Electronic chart(s)	1 x
Navigation lights	yes
Extra info	Starlink, Iridium phone

EQUIPMENT

Fixed windscreen	yes
Sprayhood	yes
Cockpit cover	functions also as a Bimini
Dodger	yes
Cockpit table	yes
Bathing platform	yes
Boarding ladder	stainless steel
Anchor	Rocna 20kg
Anchor chain	60 mtr
Anchor 2	Rocna 20kg
Windlass	electrical Lofrans 12v/1000watt
Dinghy	inflatable 2,60 mtr
Outboard	Suzuki 2.5 hp
Sea railing	wire
Grab rail (superstructure)	stainless steel
Railing side opening gates	2 x
Pushpit	yes



SUNBEAM 34.2

Pulpit	yes
Life raft	Seasafe
Life raft (pers)	6
Last life raft survey	2024
Lifejackets	3 x inflatable
Safety harness	2 x
Lifebuoy	yes
Safety lines on deck	yes
Fenders	yes
Mooring lines	yes
Fire extinguisher	yes

RIGGING

Rigging	sloop
Standing rigging	wire 2008 (surveyed 2024)
Brand mast	Sparcraft
Material mast	aluminium
Spreaders	2 x set
Mainsail	Furling mainsail Doyle Sails (2022)
Stoway mast	yes
Genoa	Furling Doyle Sails (2022)
Genoa furler	Furlex 200S
Spinnaker	yes
Booster	Drifter (with furler)
Stormjib	yes
Reefing System	main in-mast furling
Boomvang	Sparcraft
Genoa sheetwinches	2 x Harken ST
Halyard winches	2 x Harken ST
Extra info	Harken deck hardware, all sheets lead aft into the cockpit for single handed safe sailing.



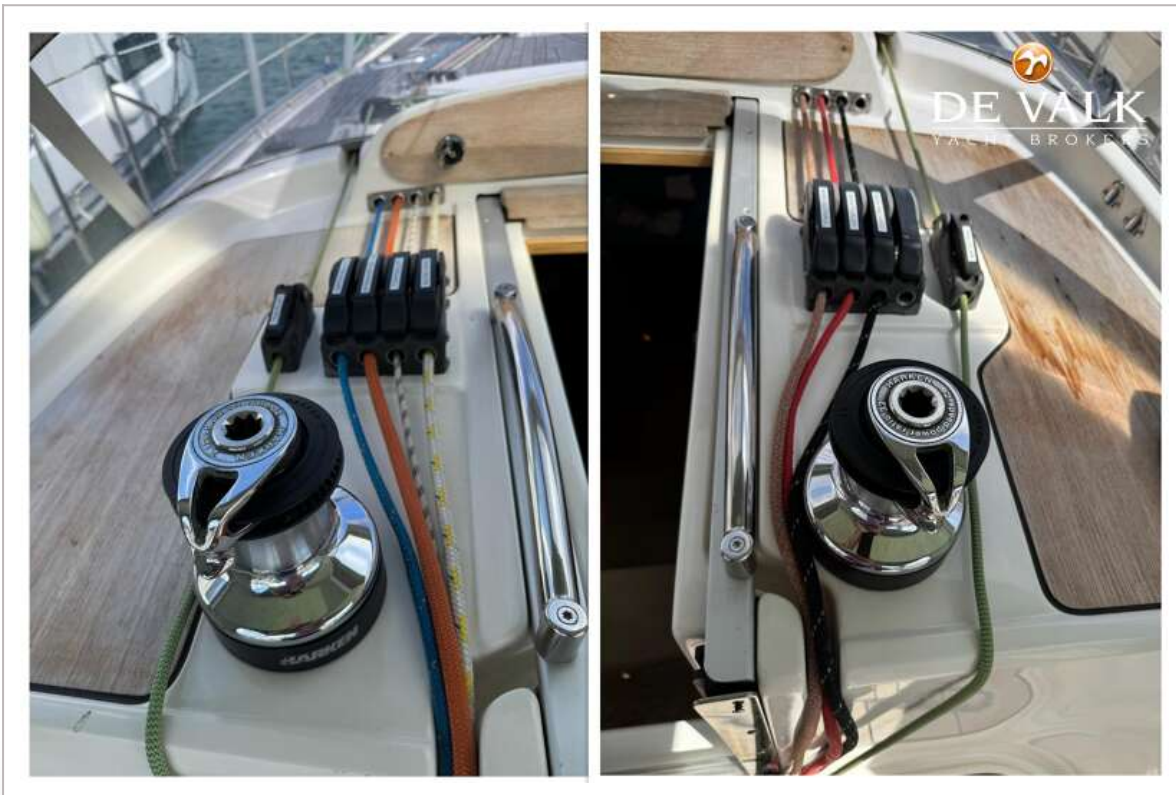
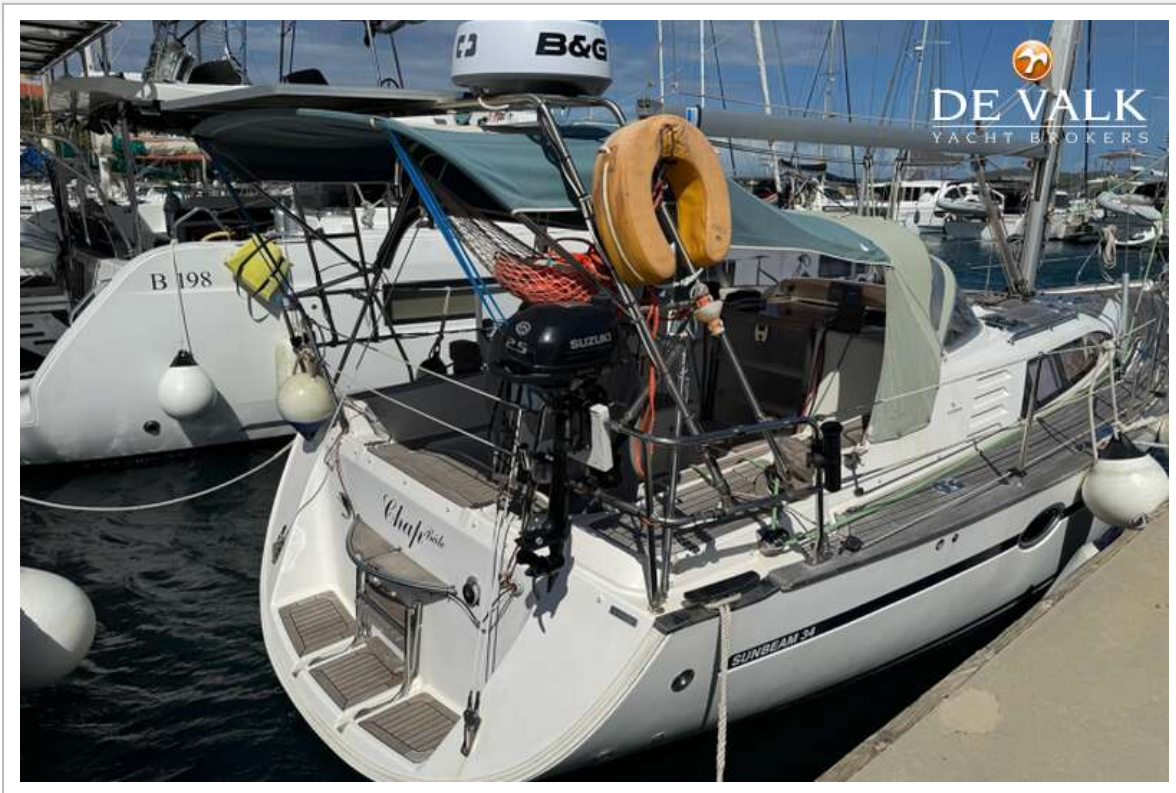
SUNBEAM 34.2



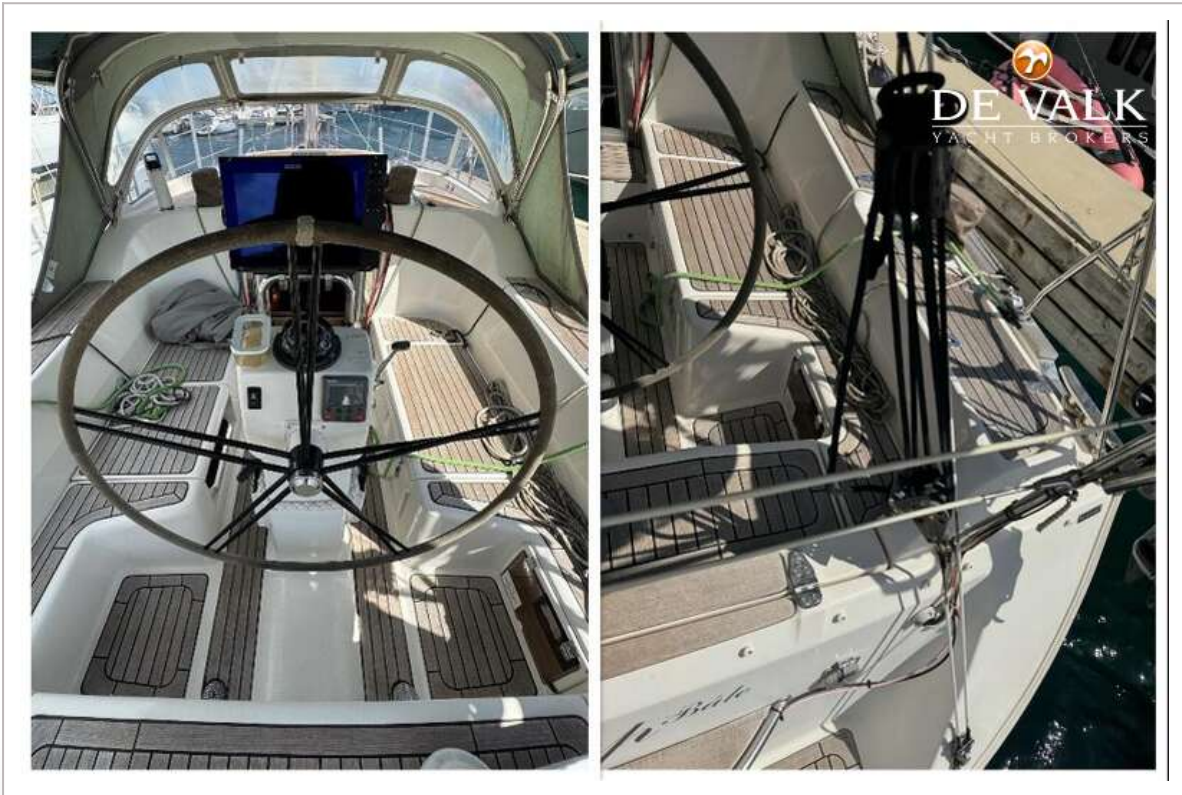
SUNBEAM 34.2



SUNBEAM 34.2



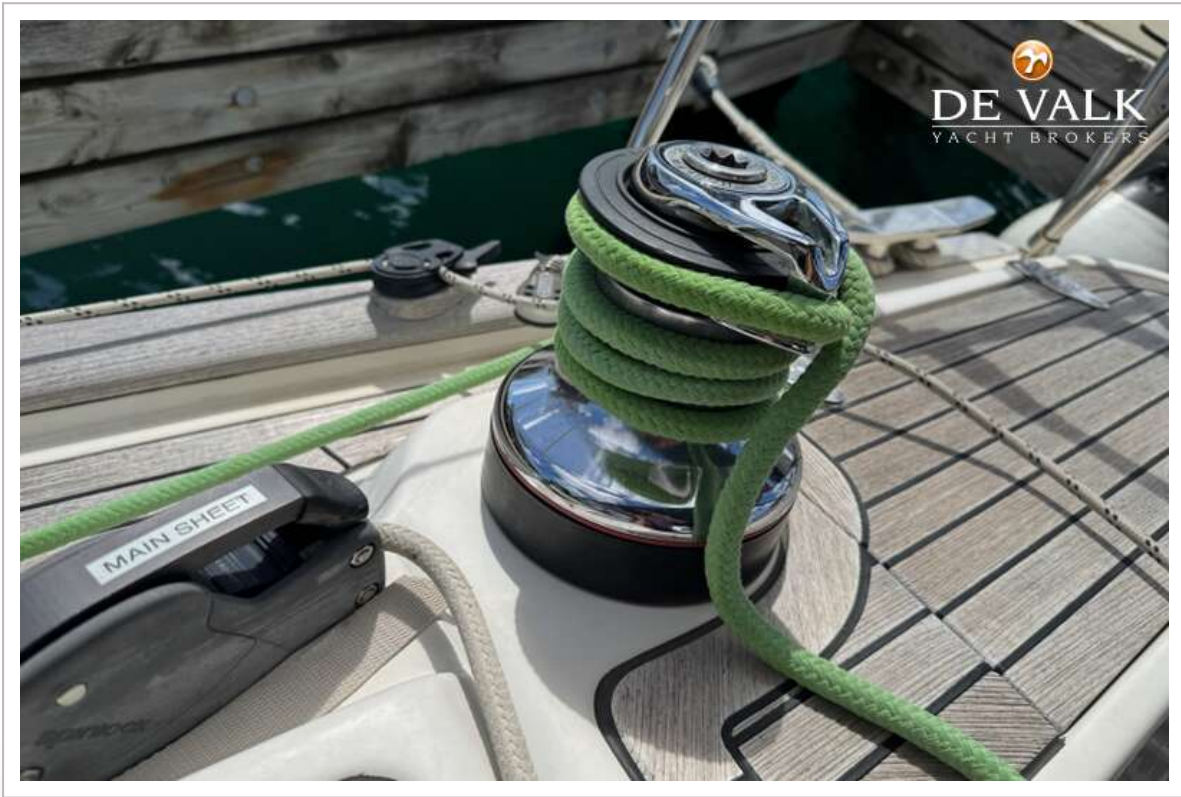
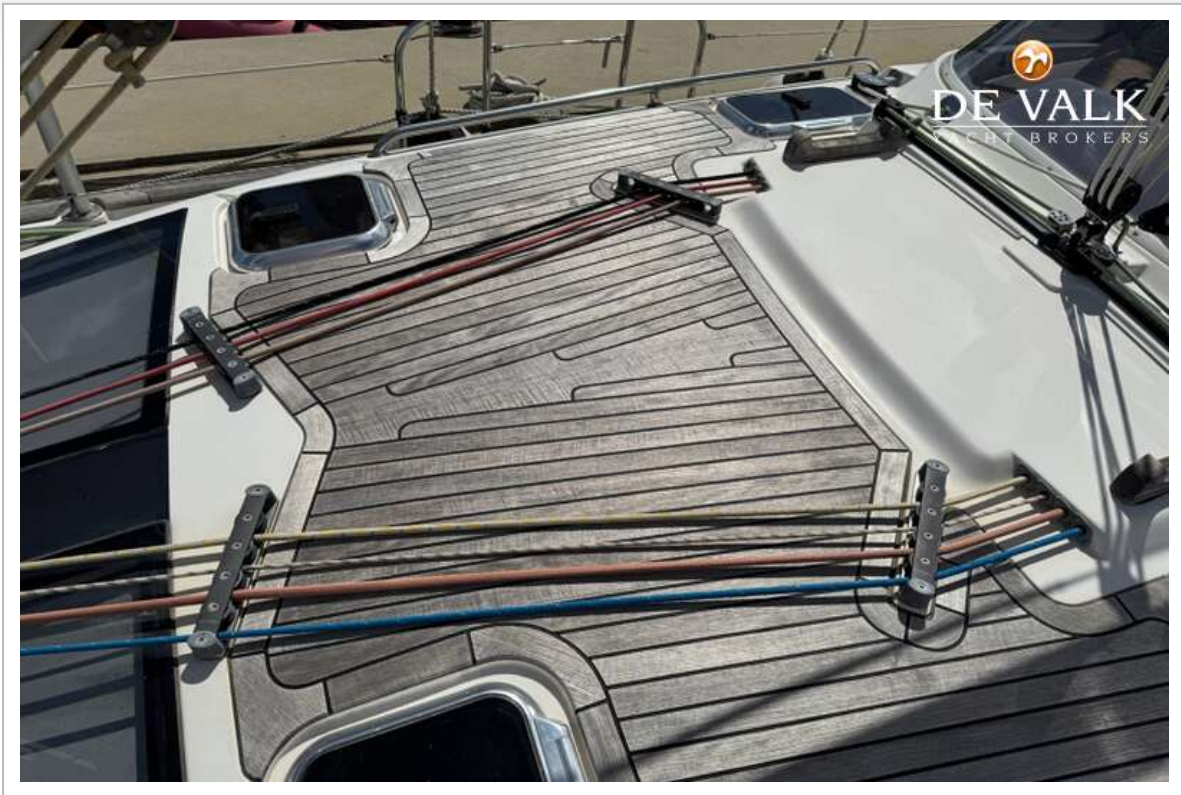
SUNBEAM 34.2



SUNBEAM 34.2



SUNBEAM 34.2



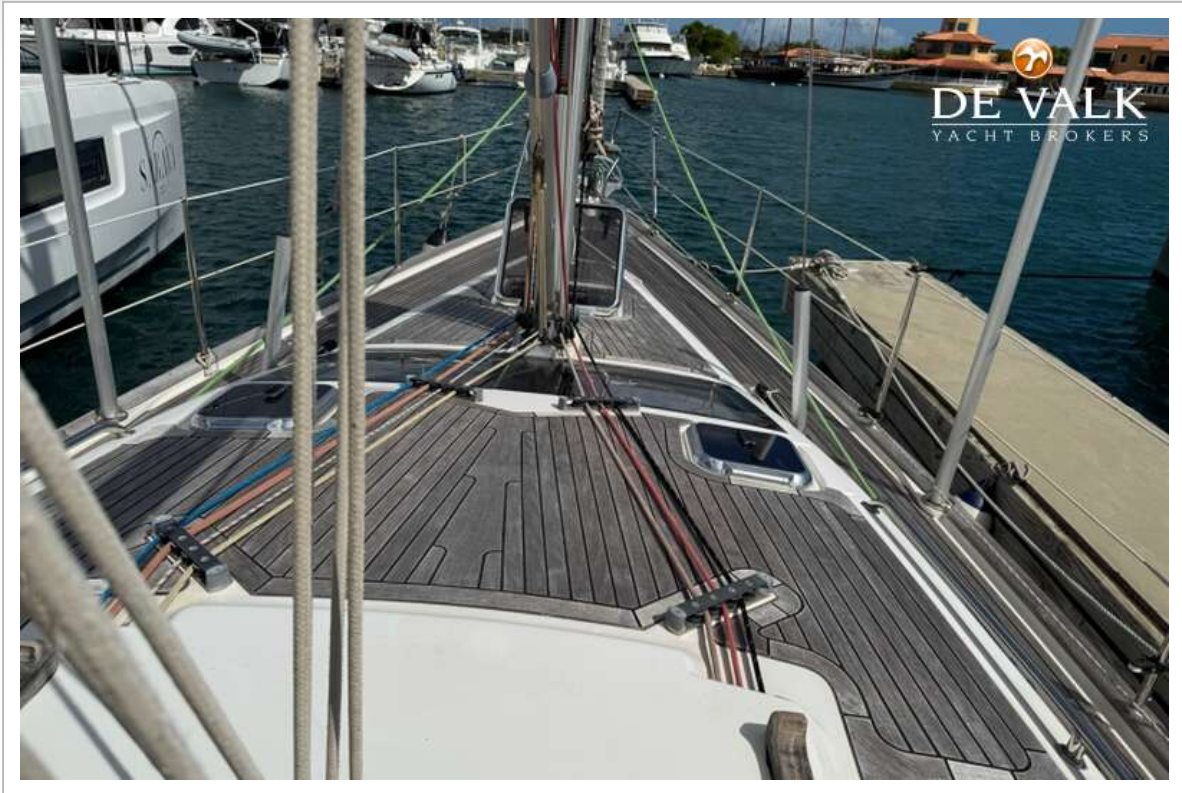
SUNBEAM 34.2



SUNBEAM 34.2



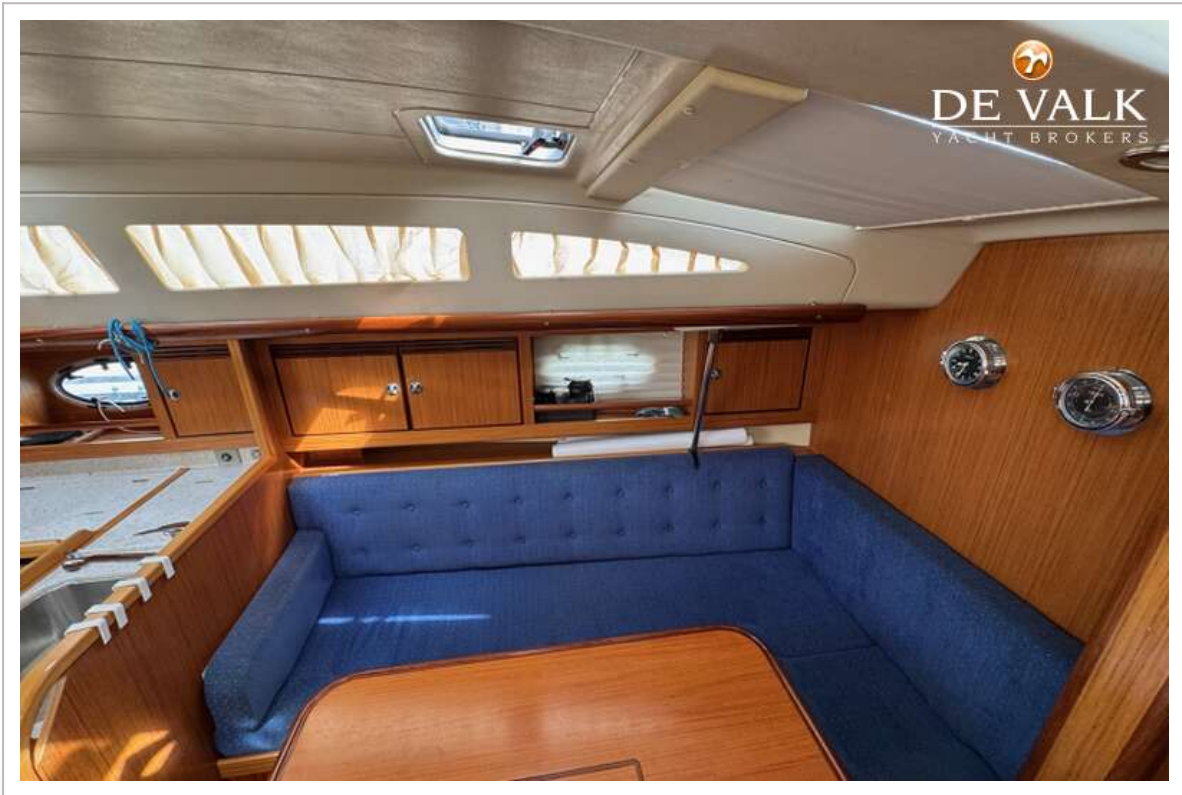
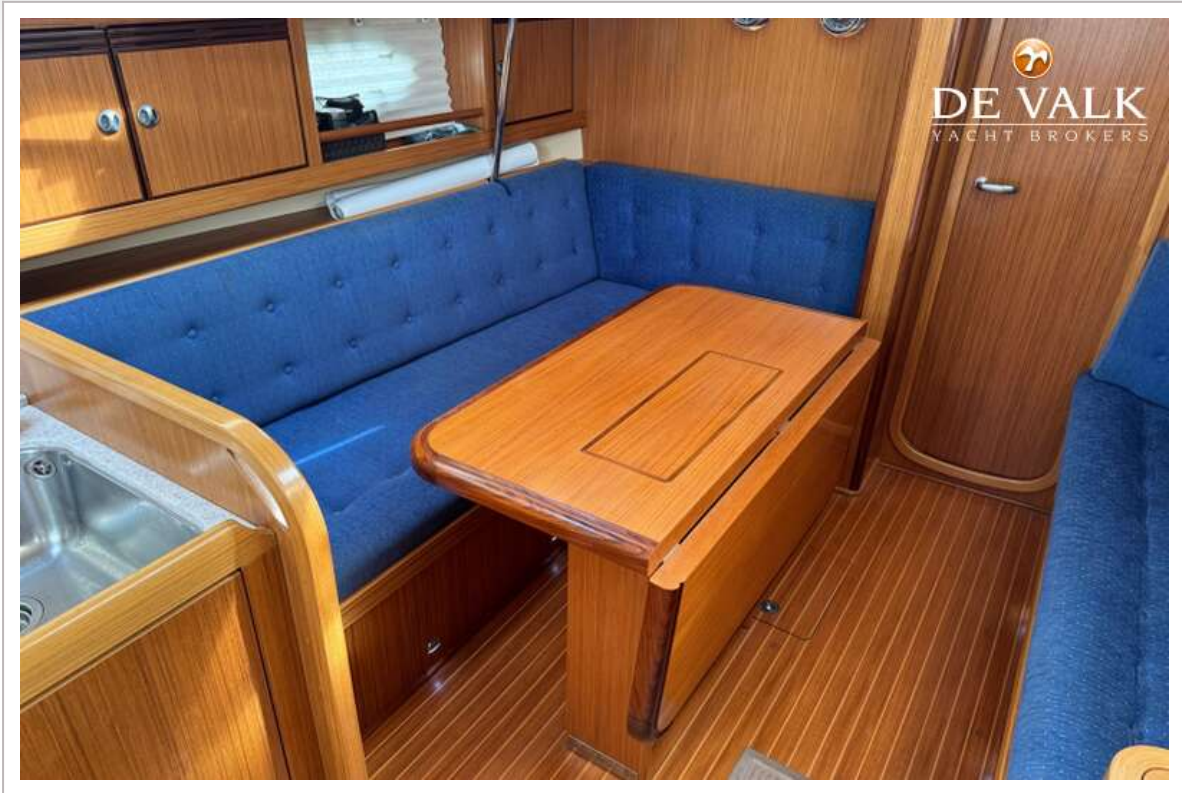
SUNBEAM 34.2



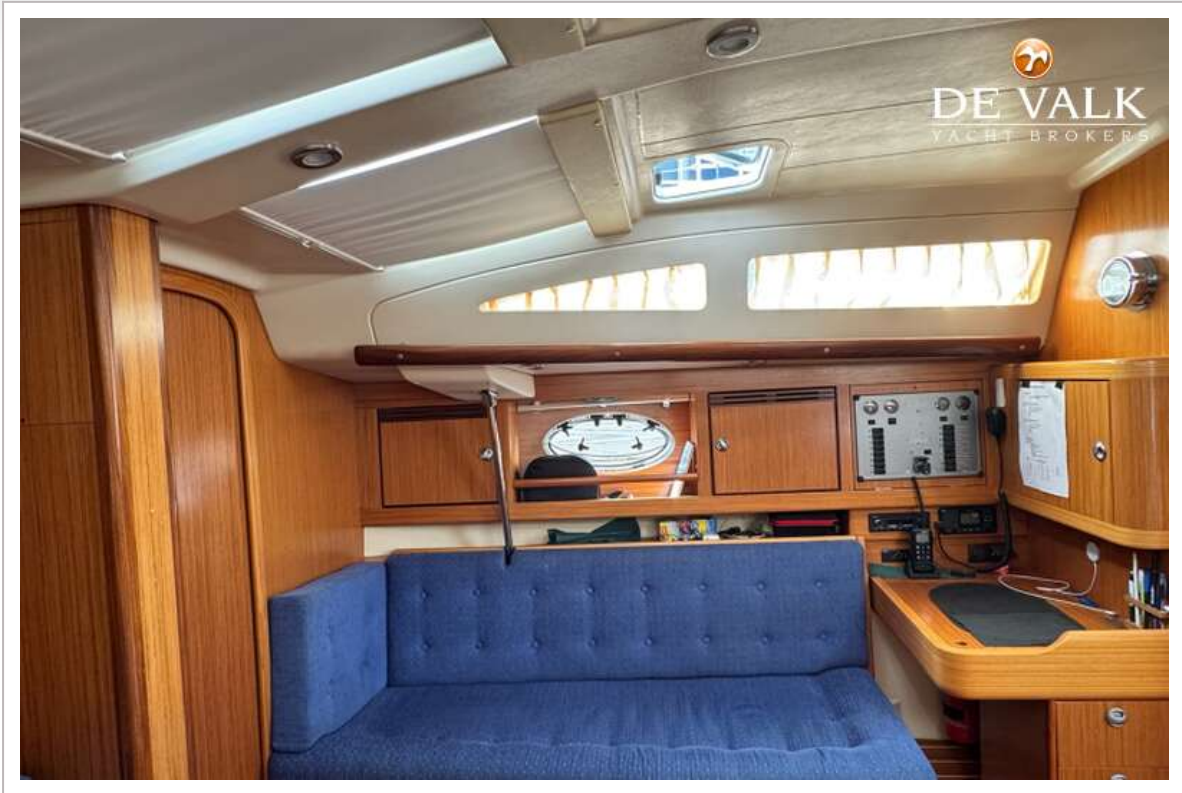
SUNBEAM 34.2



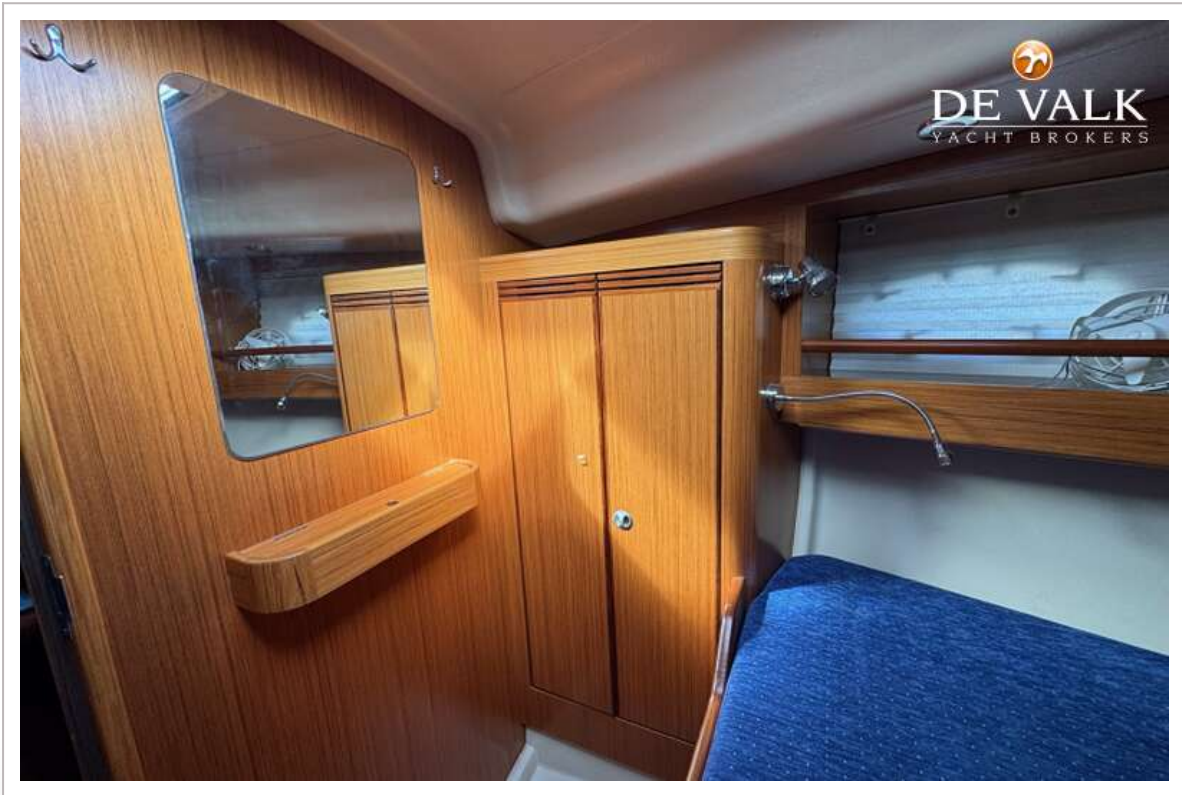
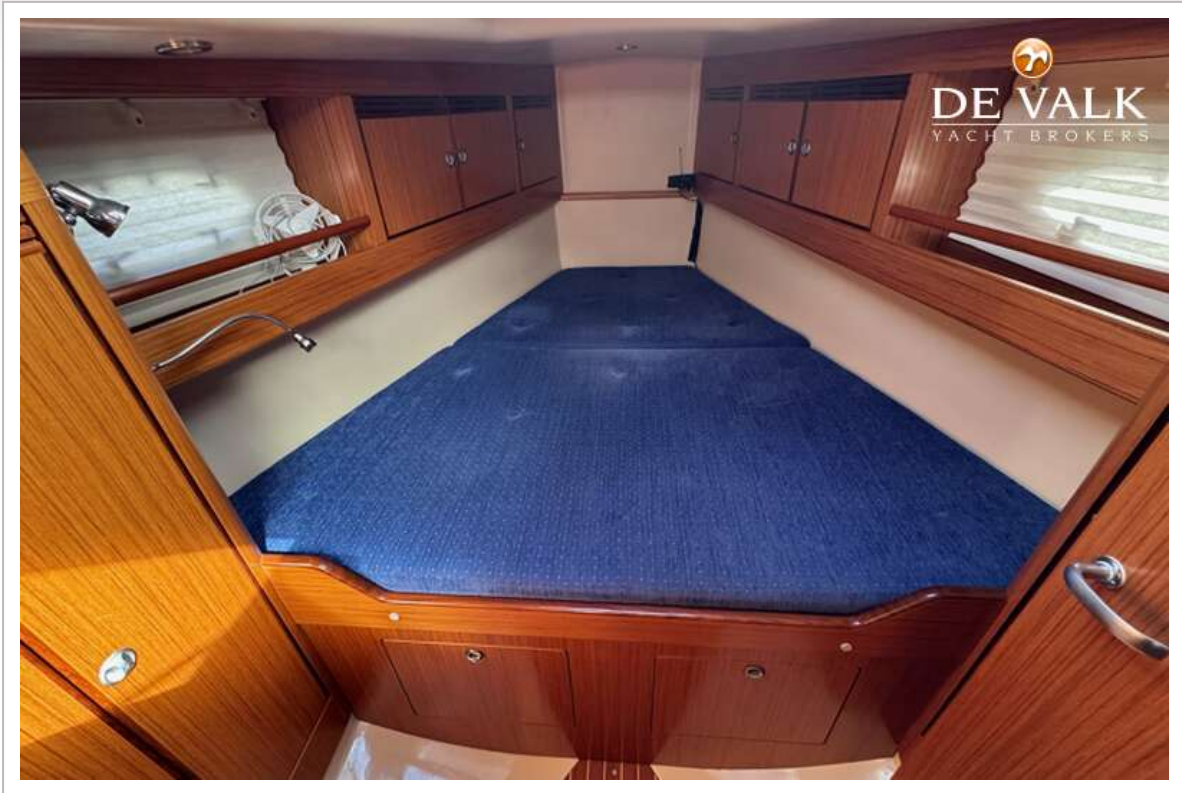
SUNBEAM 34.2



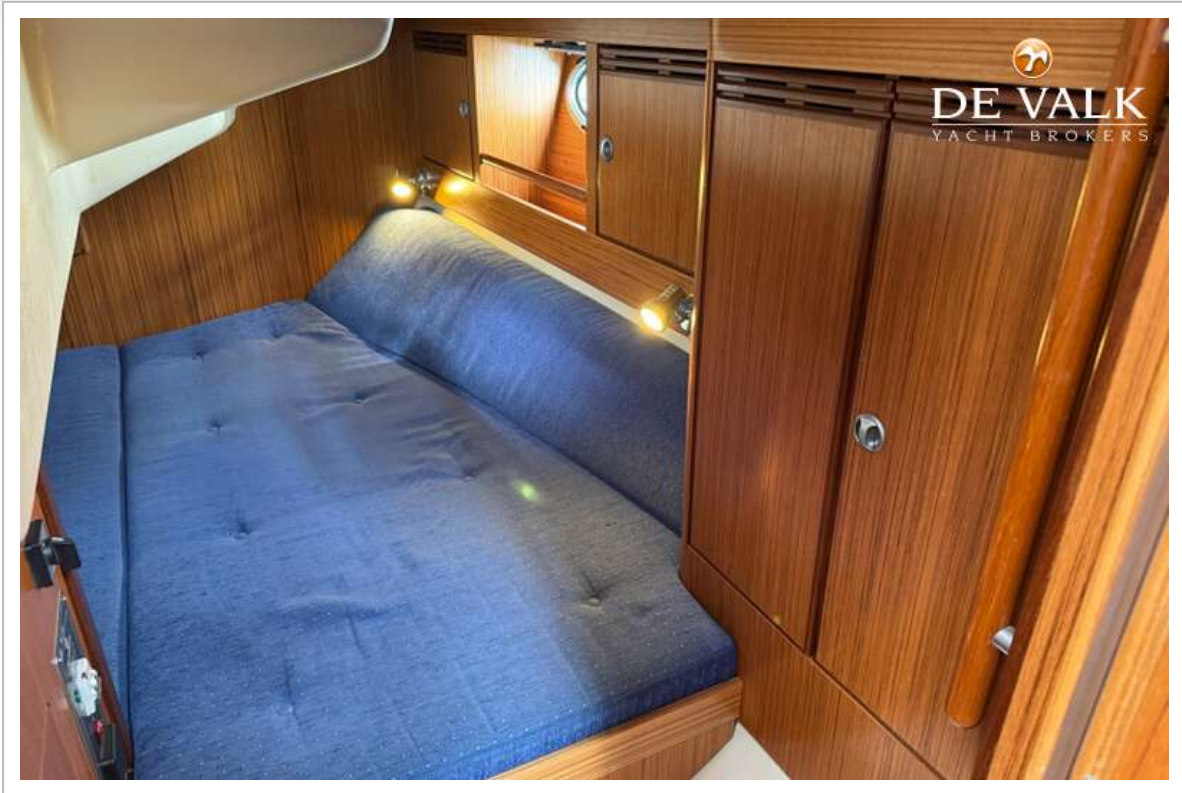
SUNBEAM 34.2



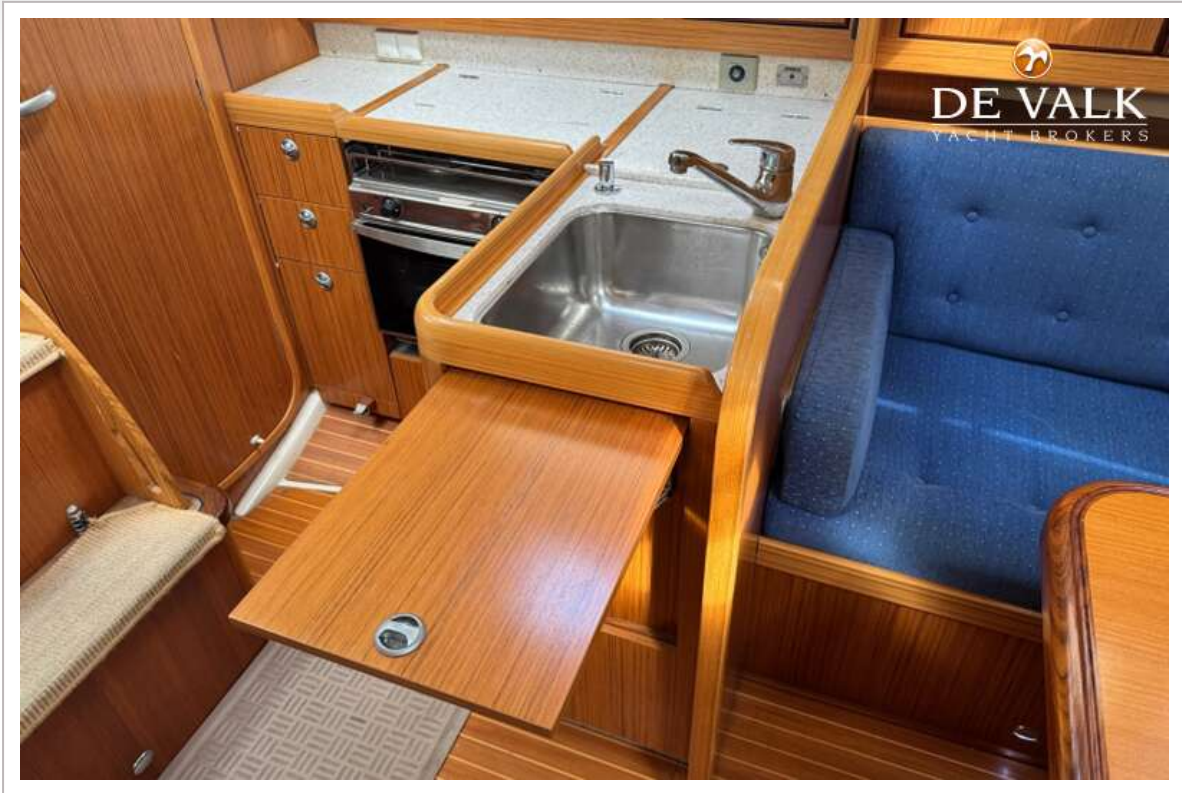
SUNBEAM 34.2



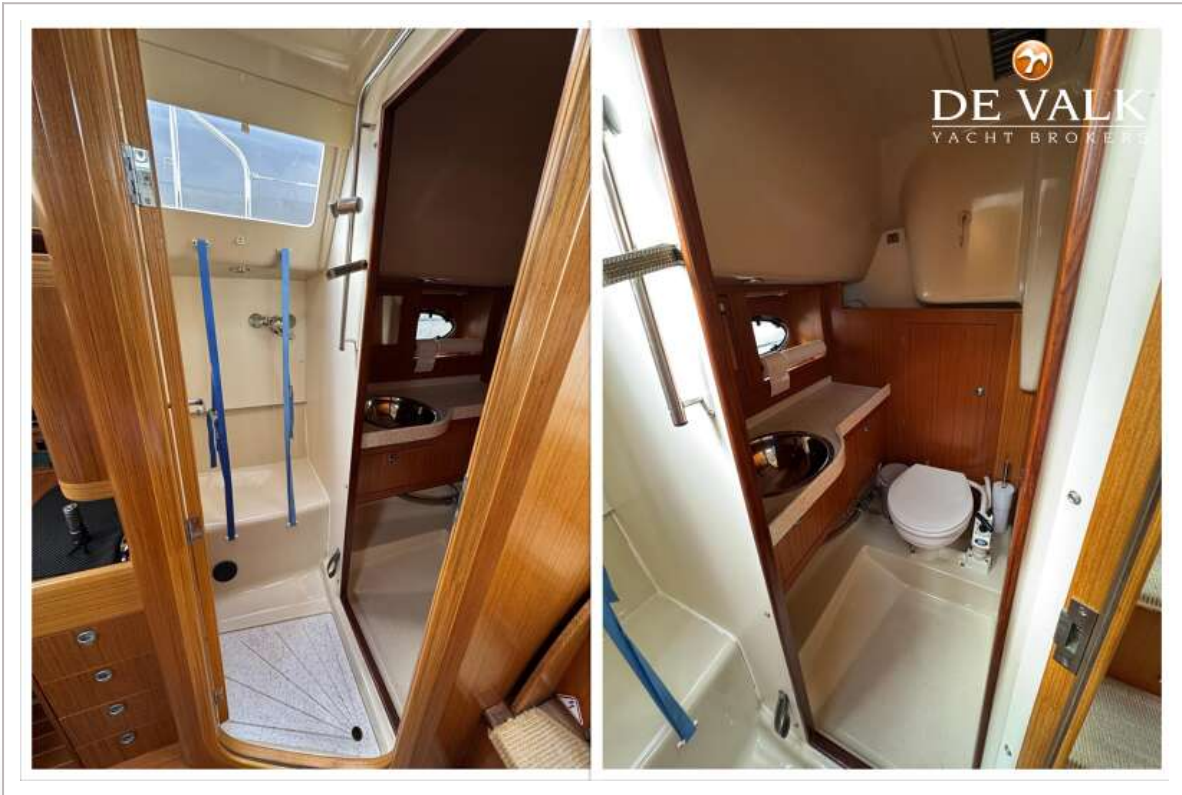
SUNBEAM 34.2



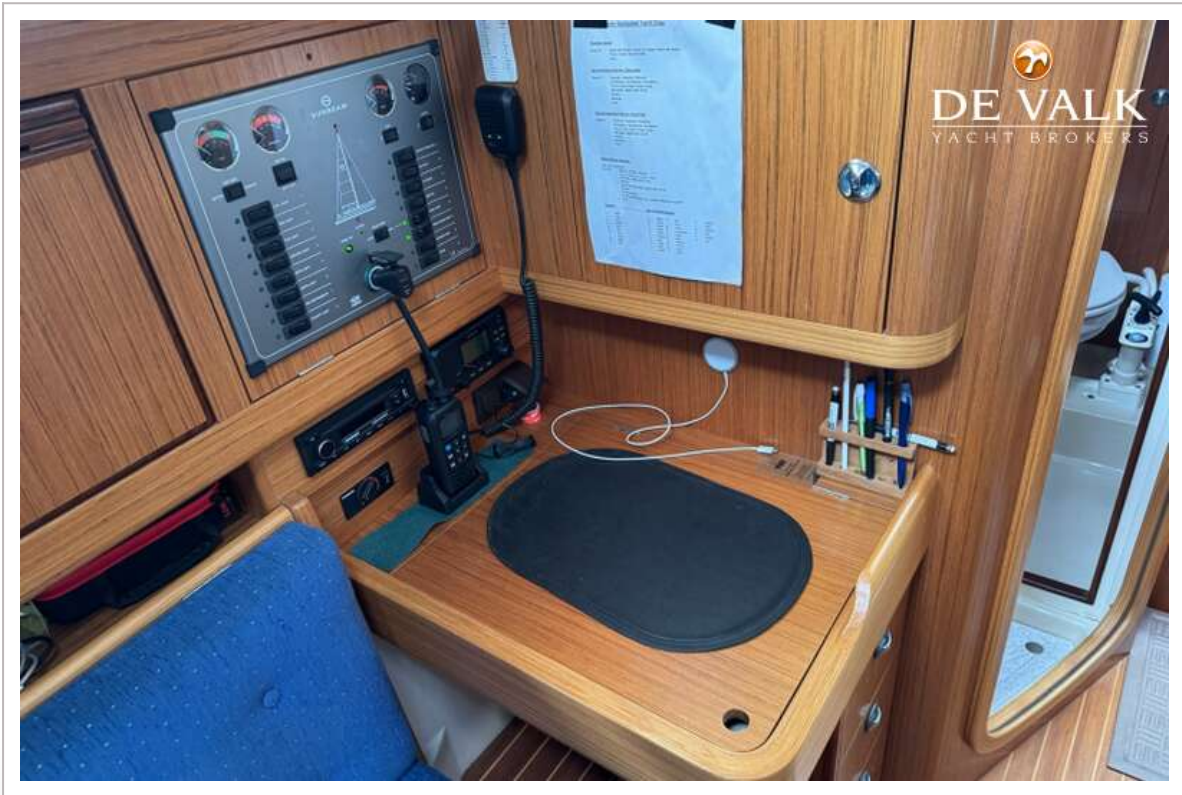
SUNBEAM 34.2



SUNBEAM 34.2



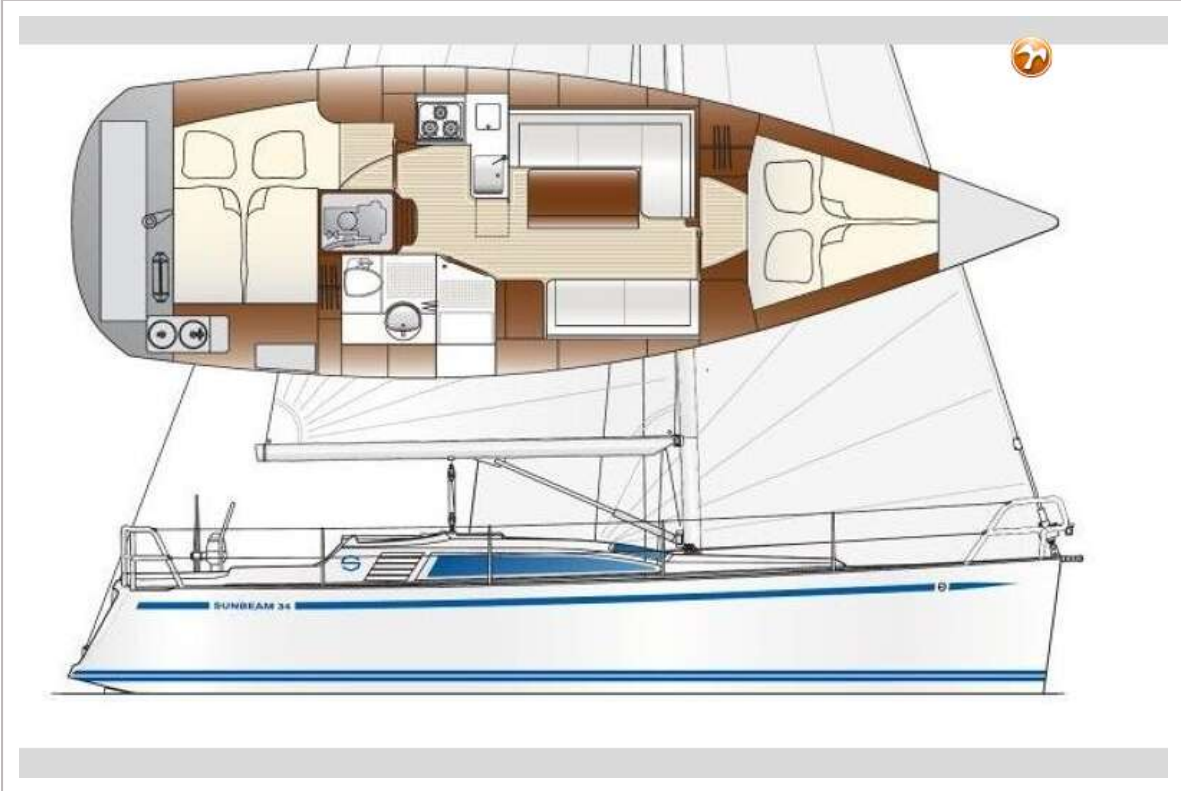
SUNBEAM 34.2



SUNBEAM 34.2



SUNBEAM 34.2



SUNBEAM 34.2



DE VALK
YACHT BROKERS



DE VALK
YACHT BROKERS

