



BLUE OCEAN 50

# BLUE OCEAN 50

## BROKER'S COMMENTS

A comfortable and cozy Blue Ocean Trawler 50 is now available. Spacious interior build in traditional teak wood invites for longer stays onboard. The foredeck (Portuguese) is large and you will find it a good spot for lounging. Flybridge site is impressive for this size of yacht. Indestructible Ford Lehman engines and were overhauled in 2006 and come with low working hours (800). Same for generator. Offers invited!

*Miha Spendal*

## SPECIFICATIONS

<b>Dimensions</b>	14.90 x 4.50 x 1.35 (m)	<b>Builder</b>	Blue Ocean
<b>Built</b>	1979	<b>Cabins</b>	3
<b>Material</b>	GRP	<b>Berths</b>	6
<b>Engine(s)</b>	2 x Ford Lehman diesel	<b>Hp/Kw</b>	2 x 150.00 (hp), 110.40 (kw)
<b>Asking price</b>	€ 135.000 (VAT Paid)	<b>Lying</b>	elsewhere / Not at sales office

## CONTACT

<b>Sales office</b>	De Valk Istria	<b>Telephone</b>	+386 (1) 600 2704
<b>Address</b>	(Marina Izola) Dantejeva Ulica 22 6310 Izola SI	<b>E-mail</b>	istria@devalk.nl

## DISCLAIMER

These particulars are given in good faith as supplied but cannot be guaranteed.



# BLUE OCEAN 50

## GENERAL

<b>Model</b>	BLUE OCEAN 50
<b>Type</b>	motor yacht
<b>LOA (m)</b>	14,90
<b>Beam (m)</b>	4,50
<b>Draft (m)</b>	1,35
<b>Year built</b>	1979
<b>Builder</b>	Blue Ocean
<b>Country</b>	The Netherlands
<b>Displacement (t)</b>	38
<b>CE norm</b>	NA
<b>Hull material</b>	GRP
<b>Hull colour</b>	White
<b>Superstructure material</b>	GRP Wood
<b>Rubbing strake</b>	stainless steel
<b>Deck finish</b>	synthetic teak
<b>Superstructure deck finish</b>	non-skid paint
<b>Cockpit deck finish</b>	TBS non-skid profile mats
<b>Antifouling (year)</b>	2023
<b>Window frame</b>	wood
<b>Portholes</b>	aluminium
<b>Flybridge</b>	yes
<b>Flybridge suncover</b>	yes
<b>Fuel tank (litre)</b>	stainless steel 4 x 800 litres
<b>Freshwater tank (litre)</b>	stainless steel 2000
<b>Blackwater tank (litre)</b>	stainless steel 400
<b>Wheel steering</b>	hydraulic
<b>Inside helm position</b>	yes
<b>Flybridge helm position</b>	hydraulic
<b>More info on hull</b>	New underwater treatment complete in 2023



## ACCOMMODATION

<b>Cabins</b>	3
<b>Berths</b>	6
<b>Interior</b>	teak
<b>Floor</b>	teak and holly
<b>Headroom saloon (m)</b>	2,1
<b>Heating</b>	2006, not in function
<b>Air-conditioning</b>	2006, not in function
<b>Navigation center</b>	yes
<b>Chart table</b>	yes
<b>Sliding door to cockpit</b>	yes
<b>Galley</b>	yes
<b>Countertop</b>	wood
<b>Sink</b>	stainless steel
<b>Cooker</b>	ceramic
<b>Oven</b>	yes
<b>Fridge</b>	yes
<b>Freezer</b>	yes
<b>Hot water system</b>	yes
<b>Water pressure system</b>	yes
<b>Dishwasher</b>	yes
<b>Owners cabin</b>	double bed
<b>Wardrobe</b>	hanging/drawers/shelves
<b>Toilet</b>	en suite
<b>Toilet system</b>	vacuum
<b>Wash basin</b>	in the bathroom
<b>Shower</b>	en suite
<b>Guest cabin 1</b>	twin single
<b>Toilet</b>	shared
<b>Toilet system</b>	vacuum
<b>Shower</b>	shared



<b>Guest cabin 2</b>	twin single
<b>Bathroom</b>	shared
<b>Toilet</b>	shared
<b>Toilet system</b>	vacuum
<b>Shower</b>	shared

## MACHINERY

<b>No of engines</b>	2
<b>Make</b>	Ford Lehman
<b>HP</b>	150
<b>kW</b>	110.40
<b>Fuel</b>	diesel
<b>Year installed</b>	2006
<b>Year of overhaul</b>	2006, set to 0 Hours
<b>Engine hours</b>	800
<b>Engine cooling system</b>	Fresh water
<b>Drive</b>	shaft
<b>Shaft seal</b>	yes
<b>Engine controls</b>	electrical & bowden cable Electrical 3 positions, cable from inside position as spare
<b>Bowthruster</b>	electric 24V
<b>Sternthruster</b>	electric 12V
<b>Propeller type</b>	fixed 3 blade
<b>Propeller shaft material</b>	stainless steel
<b>Electric bilge pump</b>	yes
<b>Generator</b>	wet exhaust
<b>Running hours generator</b>	800
<b>Start battery</b>	2x
<b>Service battery</b>	12V group 4 working batteries
<b>Generator battery</b>	1
<b>Bowthruster battery</b>	24V group two batteries for the bow thruster, anchor winch



<b>Sternthruster battery</b>	12V
<b>Windlass battery</b>	yes
<b>Battery charger</b>	yes
<b>Inverter</b>	3,5kW on 24V and 2kW on 12V
<b>Solar panel</b>	12V and 24V groups, from 2023
<b>Shorepower</b>	yes
<b>Stabilizers</b>	fin Sea Rock hydraulics 2006

## NAVIGATION

<b>Compass</b>	yes
<b>Electric compass</b>	yes
<b>Depth sounder</b>	yes
<b>Log</b>	yes
<b>VHF</b>	yes
<b>VHF handheld</b>	yes
<b>Autopilot</b>	All Raymarine from 2006
<b>Radar</b>	All Raymarine from 2006
<b>GPS</b>	yes
<b>Plotter</b>	yes
<b>Electronic chart(s)</b>	yes
<b>Searchlight</b>	2 x
<b>Loudhailer</b>	yes

## EQUIPMENT

<b>Cockpit cover</b>	yes
<b>Bimini</b>	On Flybridge
<b>Sun awning</b>	yes
<b>Window cover</b>	yes
<b>Cockpit chairs</b>	yes
<b>Bathing platform</b>	yes
<b>Boarding ladder</b>	yes



# BLUE OCEAN 50

Transom door	yes
Gangway	Hydraulic
Deck shower	yes
Anchor	Brittany 65kg
Anchor chain	13mm, 100m
Windlass	electrical
Capstan	yes
Lifejackets	yes
Wiper	yes
Fenders	yes
Mooring lines	yes
Spare parts	yes
Tools	yes
TV	Recent
Satellite	yes
Radio	yes



# BLUE OCEAN 50

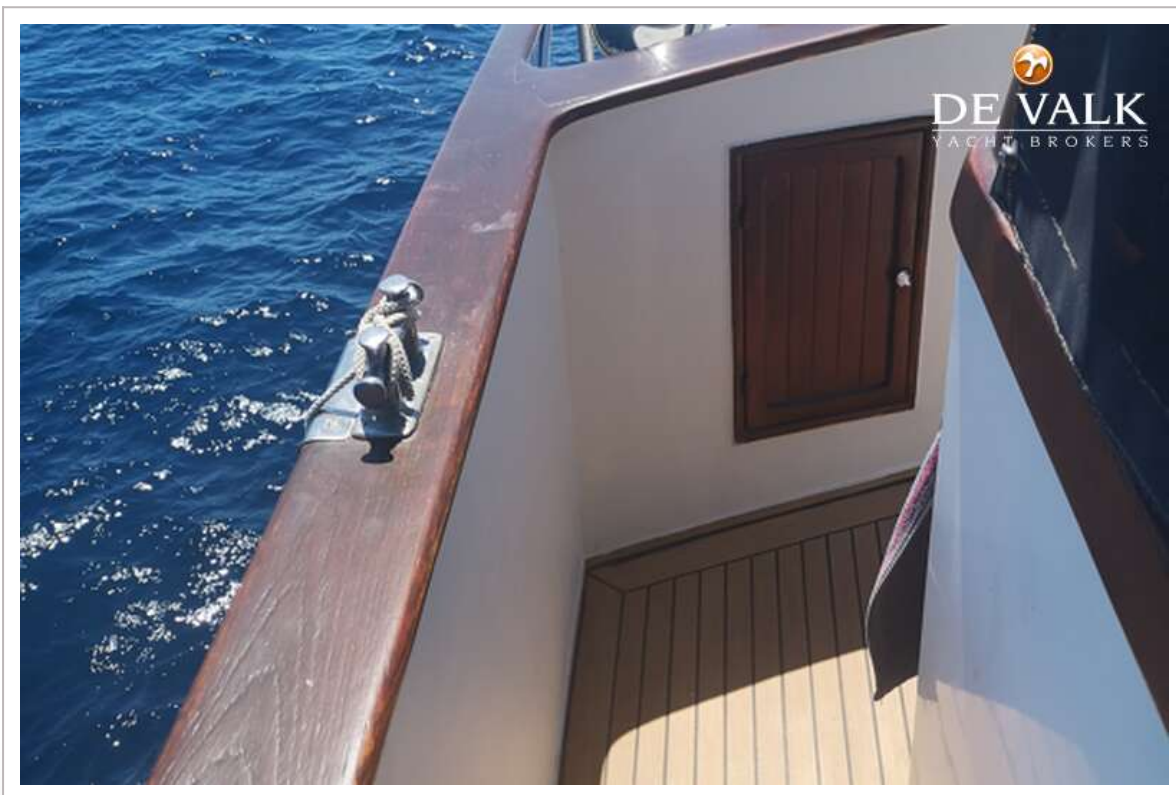




# BLUE OCEAN 50



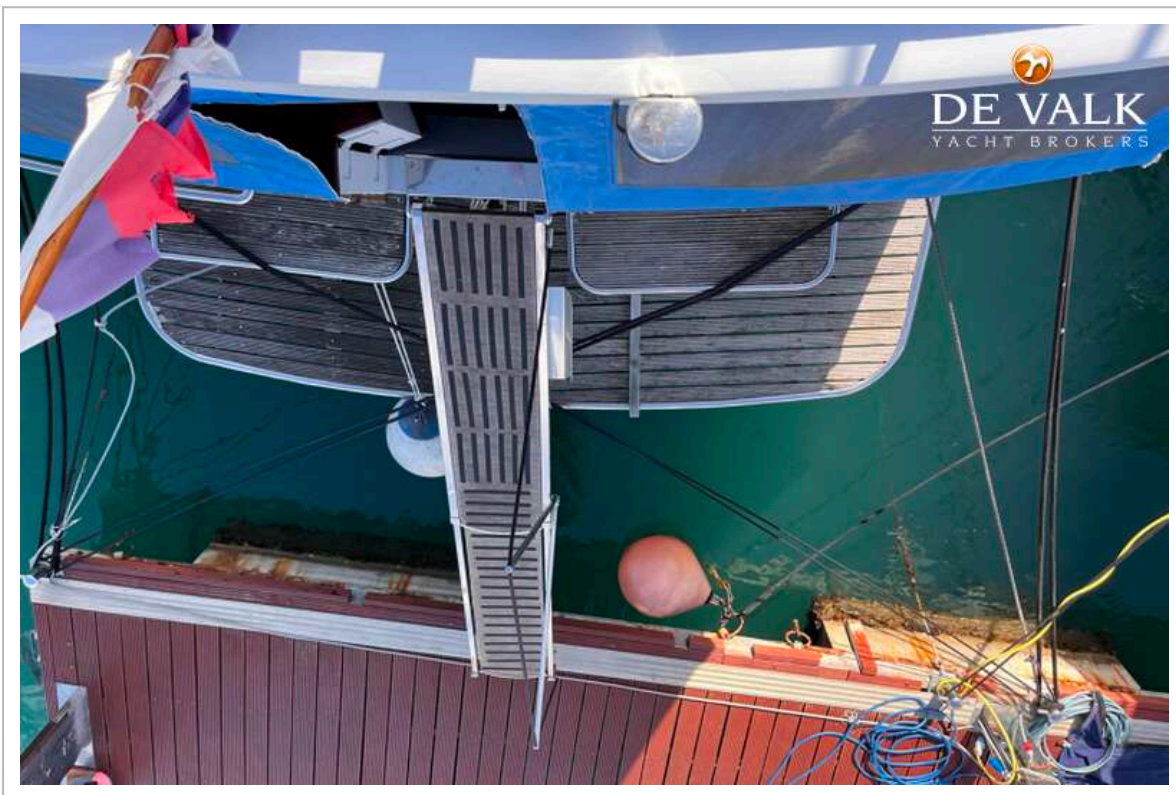
# BLUE OCEAN 50



# BLUE OCEAN 50



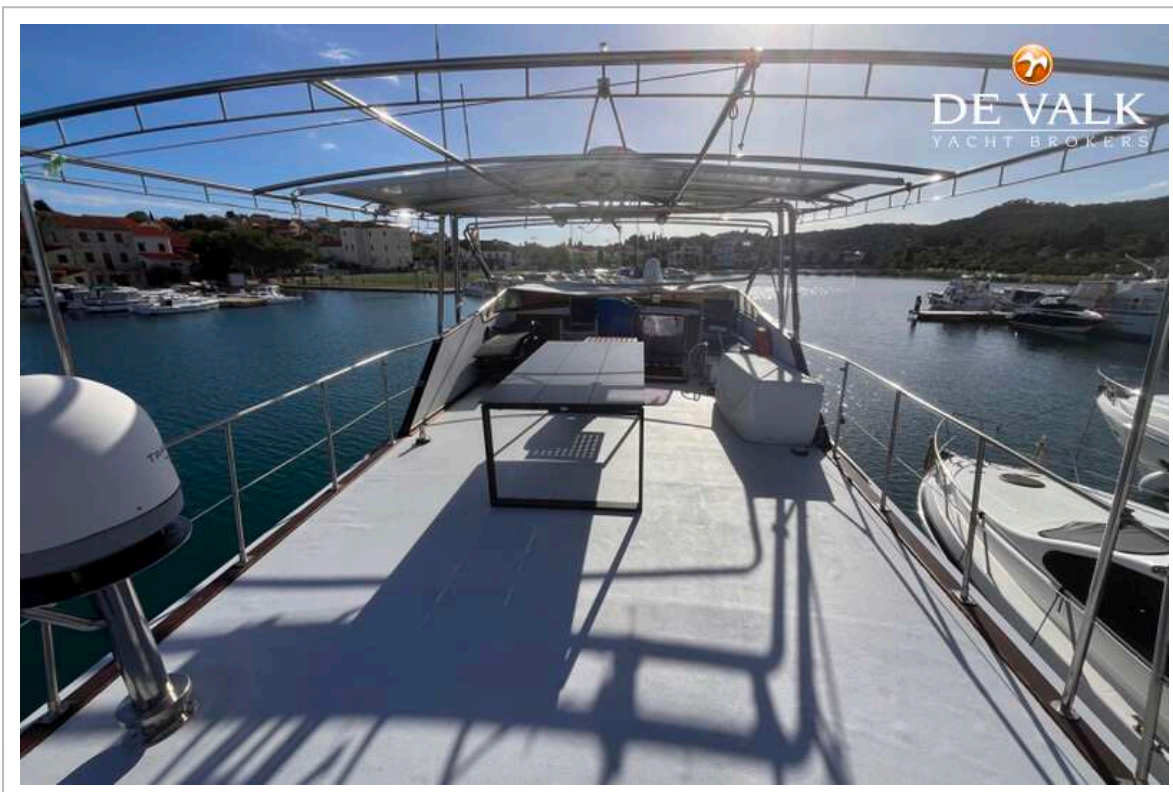
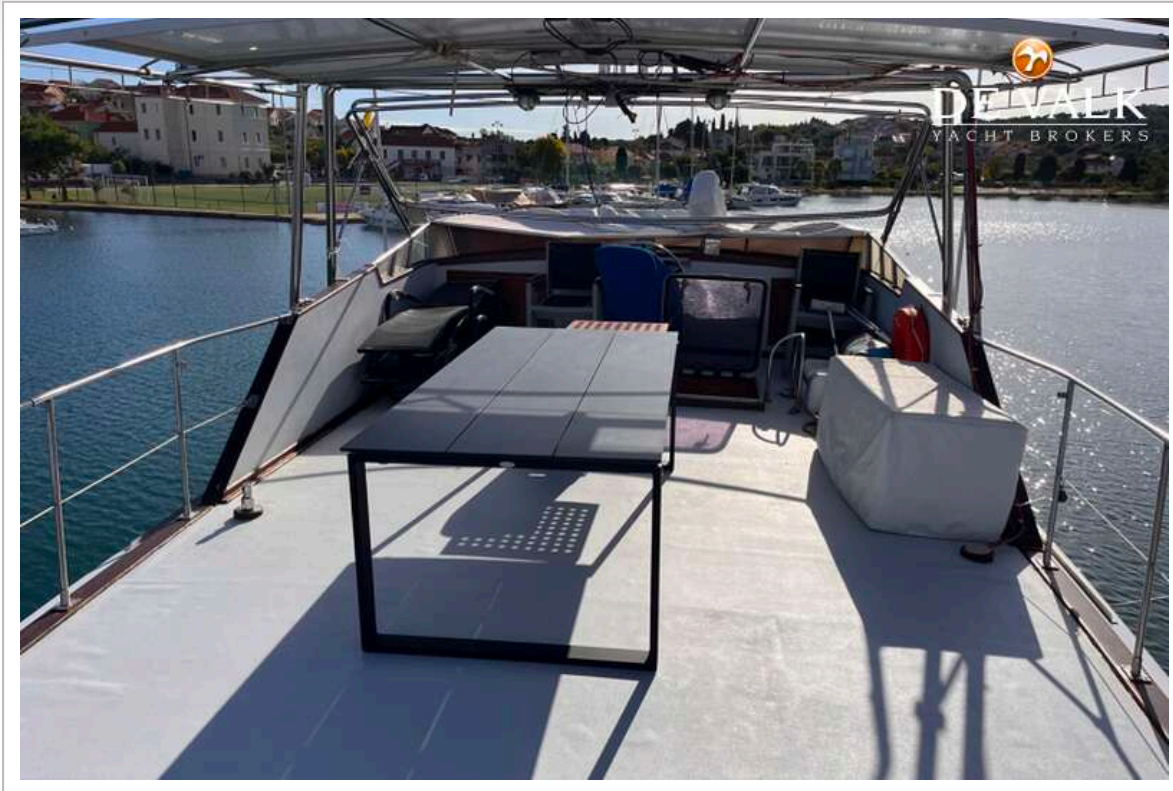
# BLUE OCEAN 50



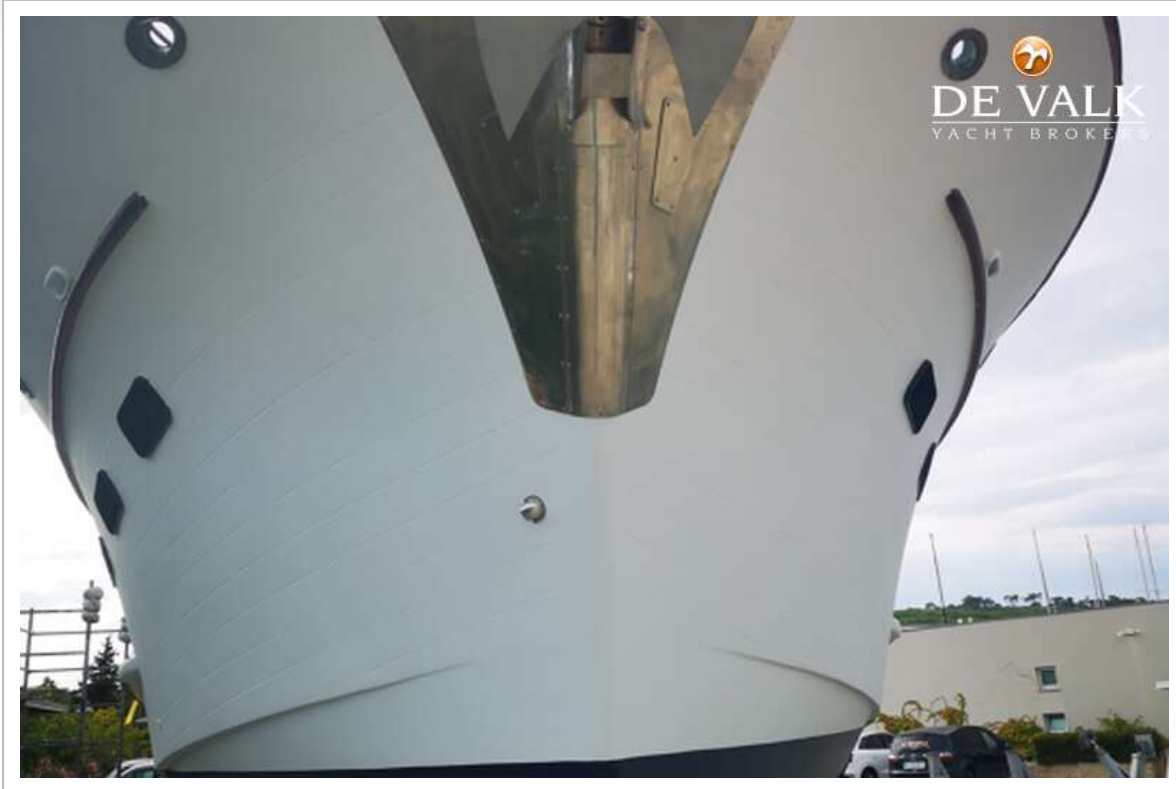
# BLUE OCEAN 50



# BLUE OCEAN 50



# BLUE OCEAN 50

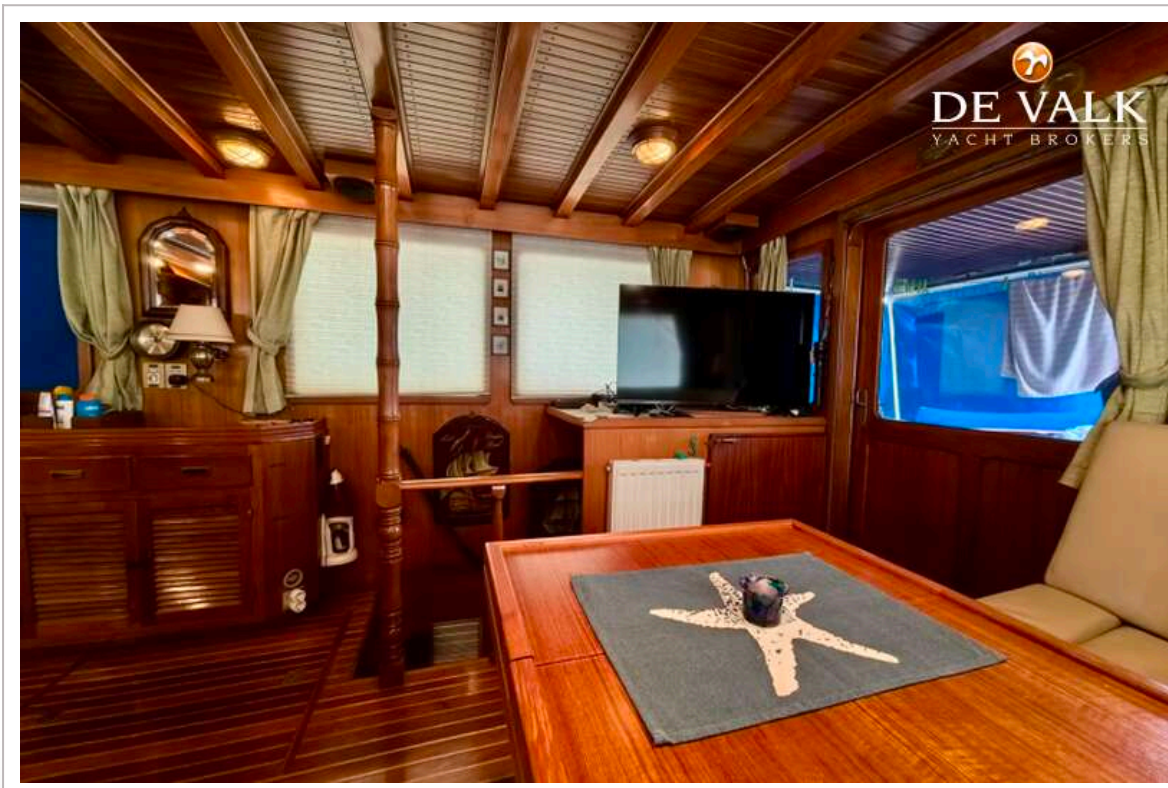


# BLUE OCEAN 50

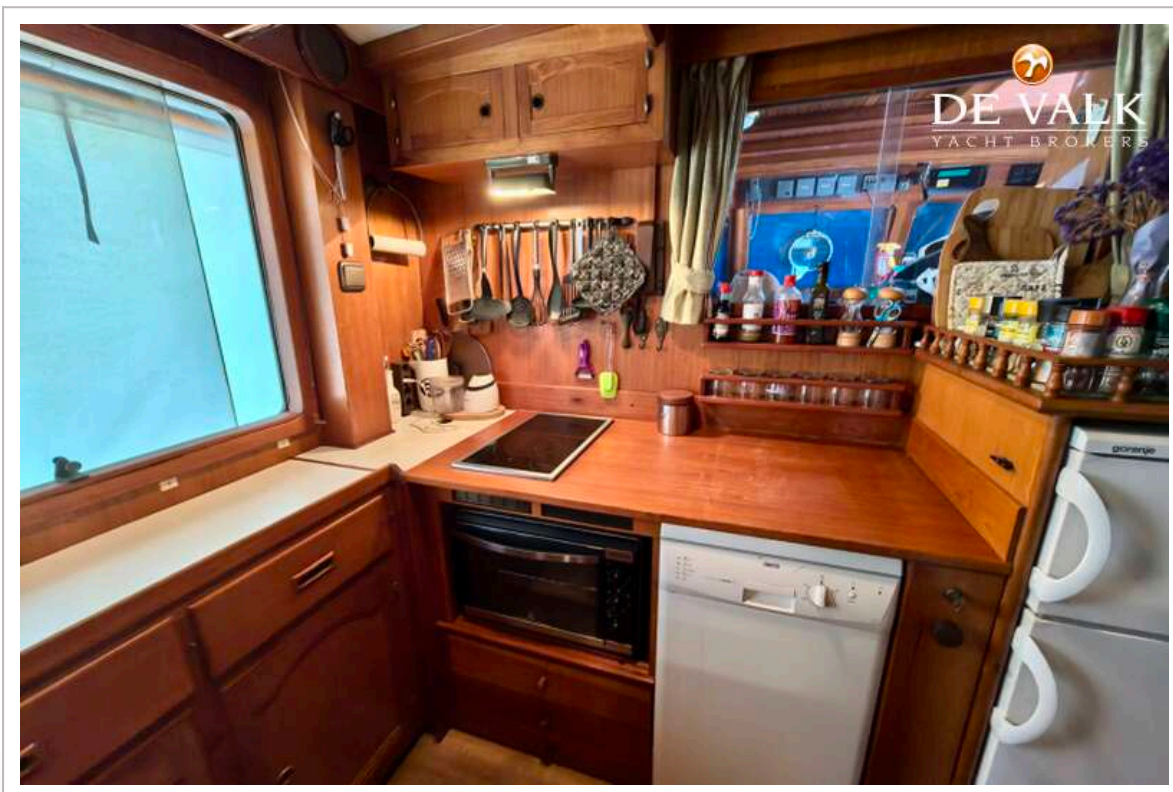
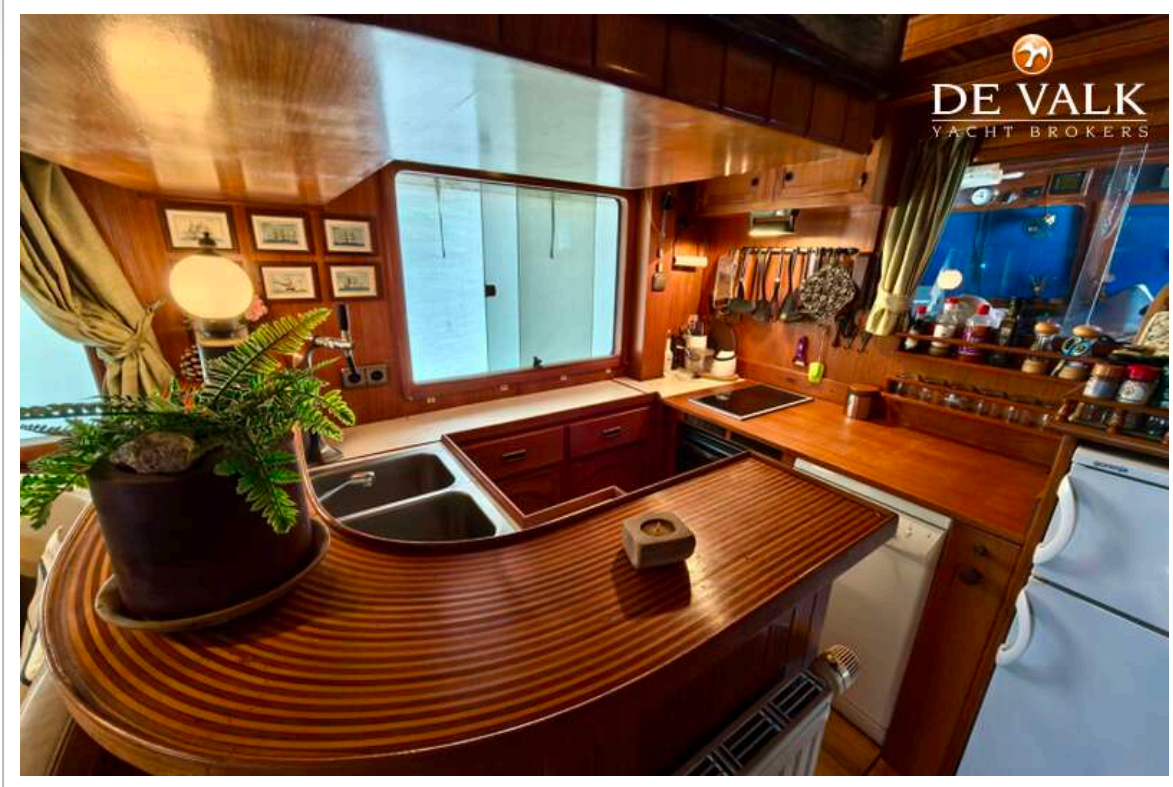




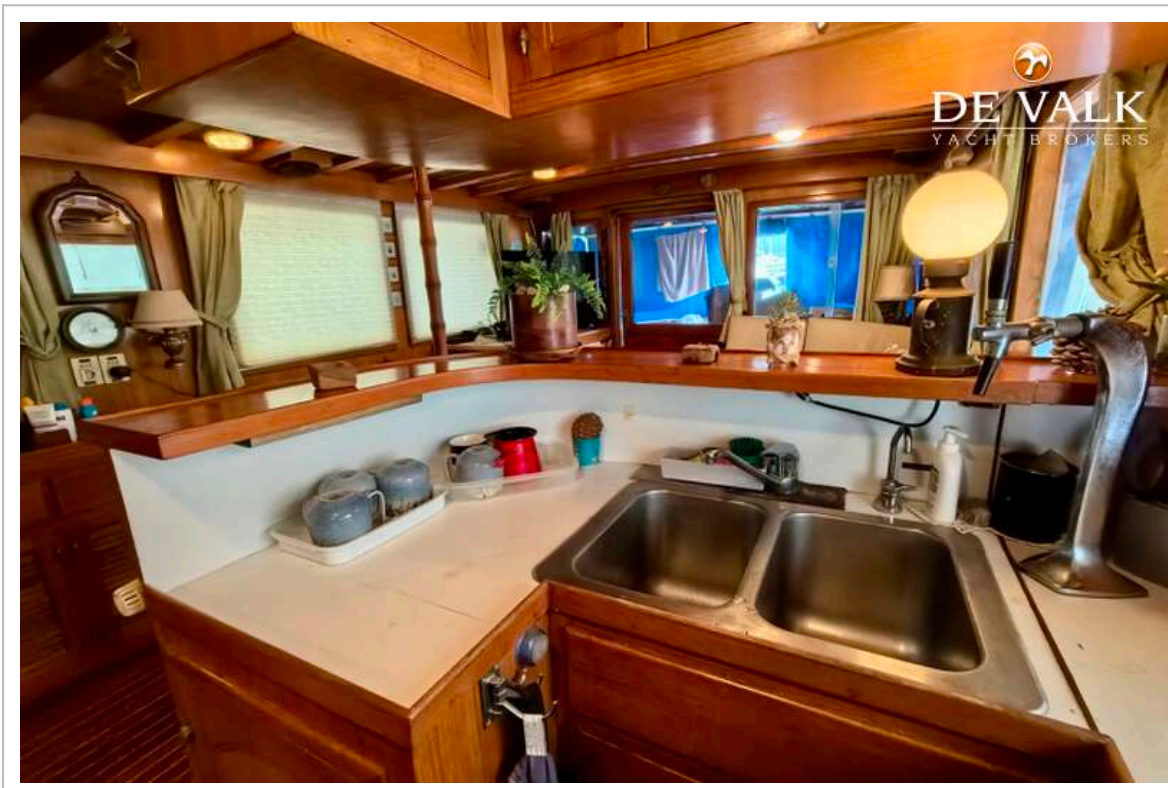
# BLUE OCEAN 50



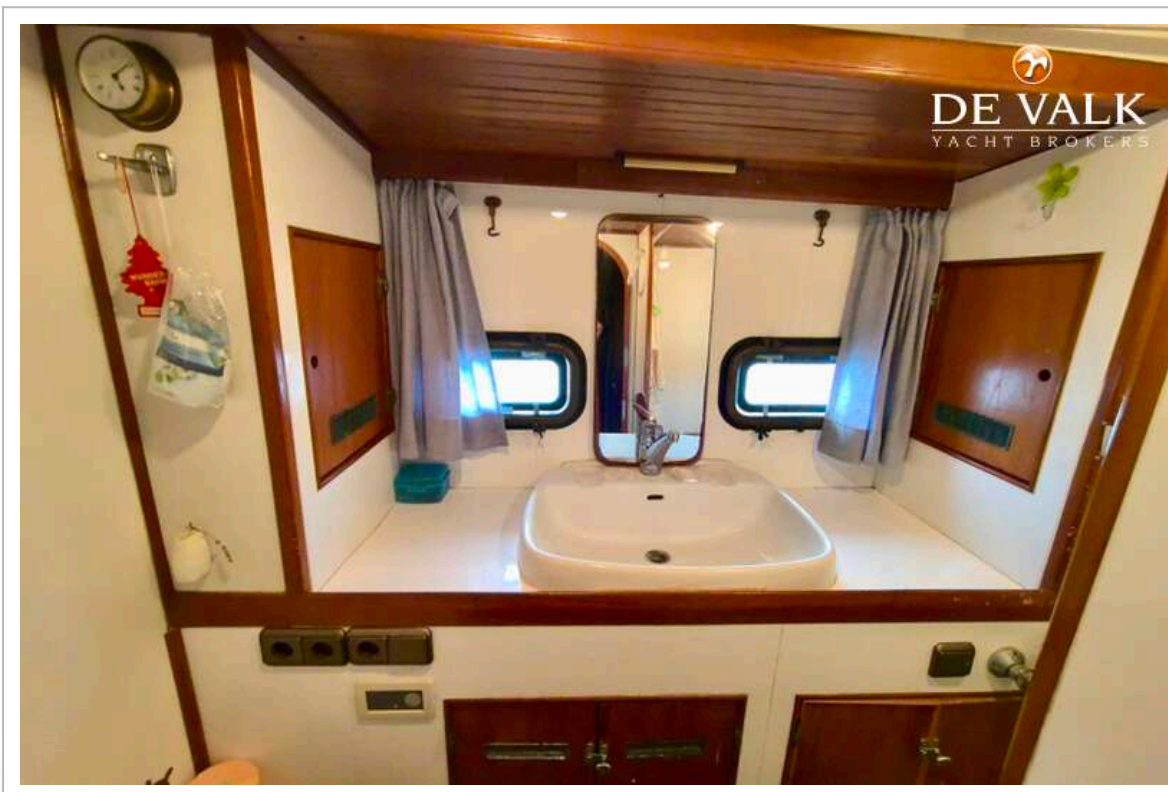
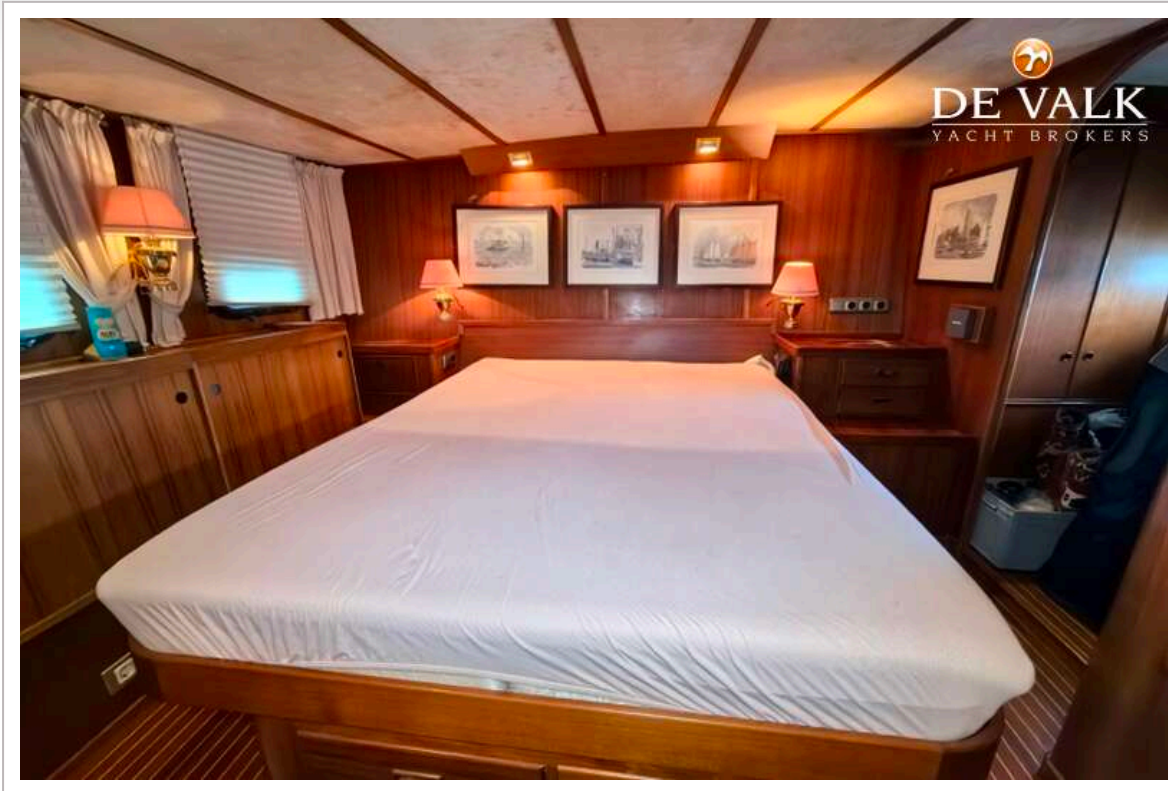
# BLUE OCEAN 50



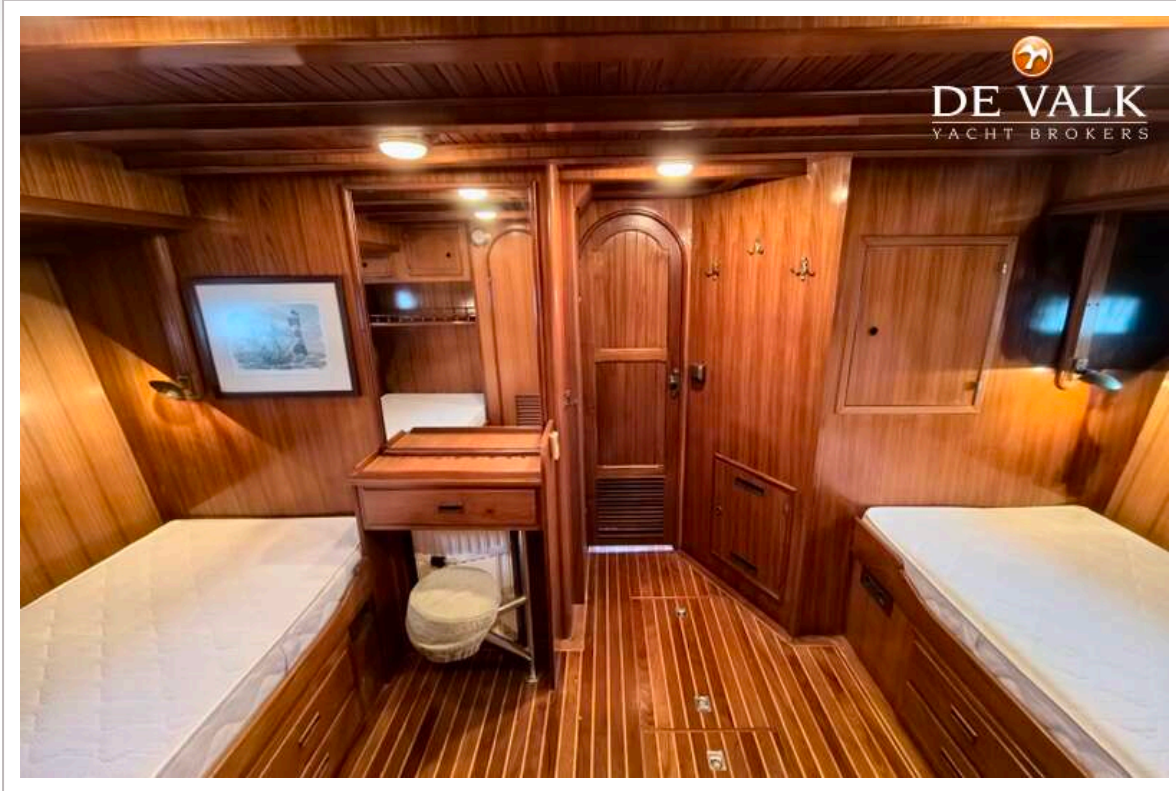
# BLUE OCEAN 50



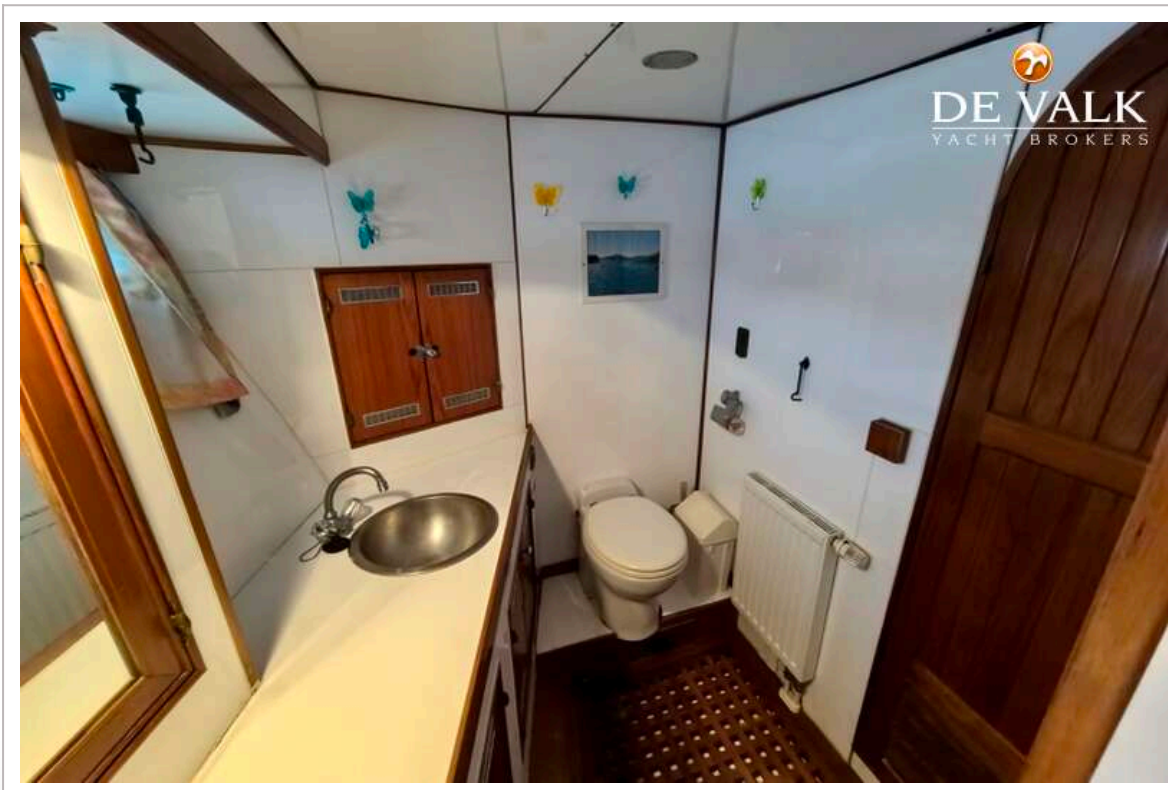
# BLUE OCEAN 50



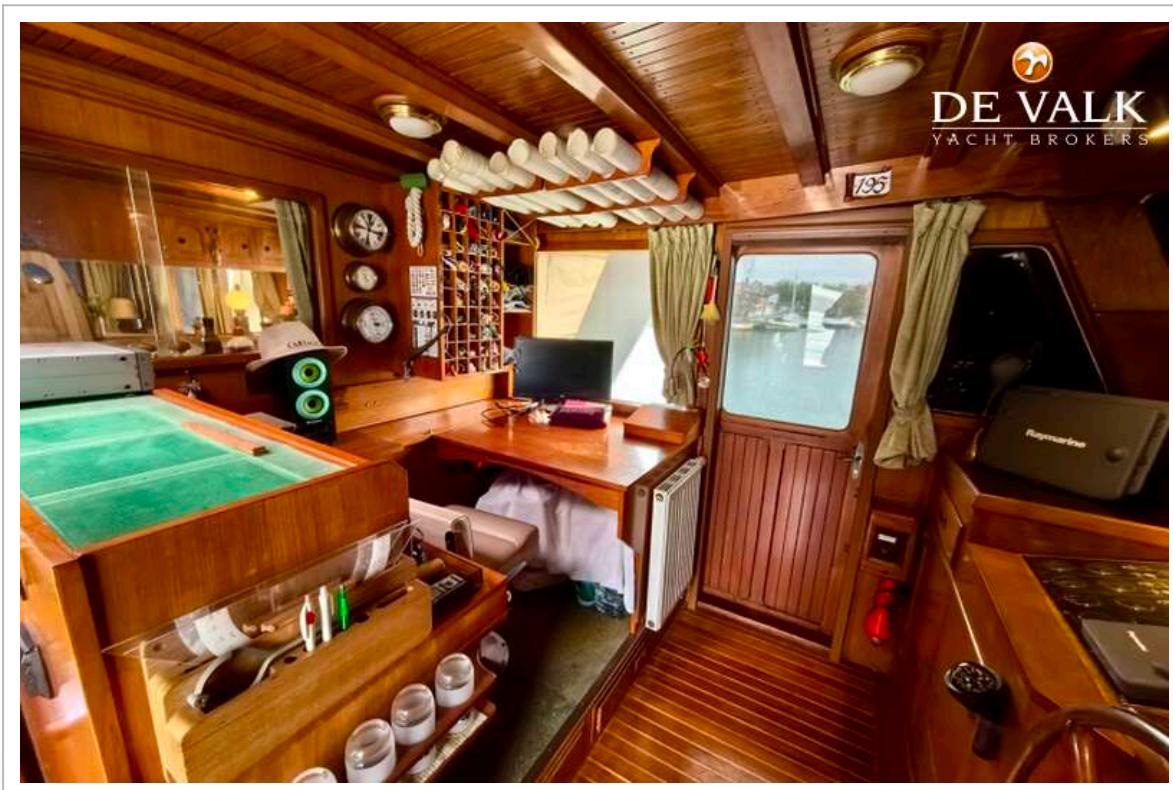
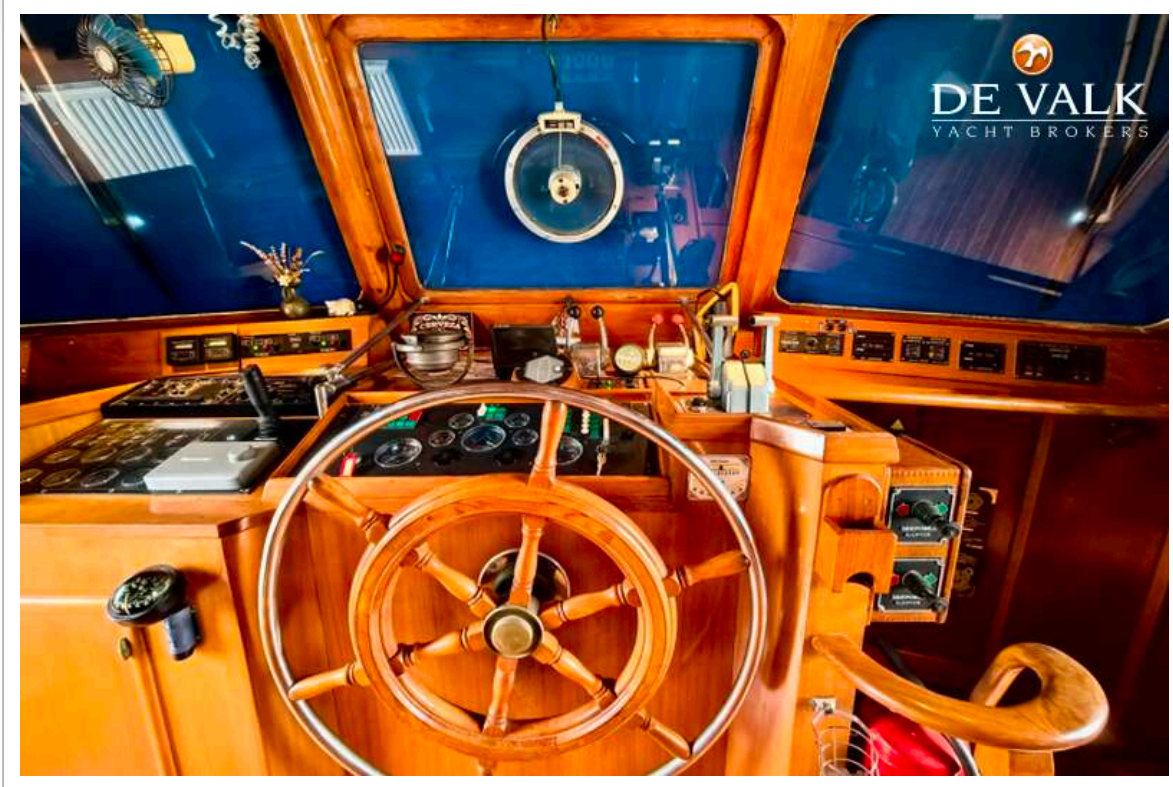
# BLUE OCEAN 50



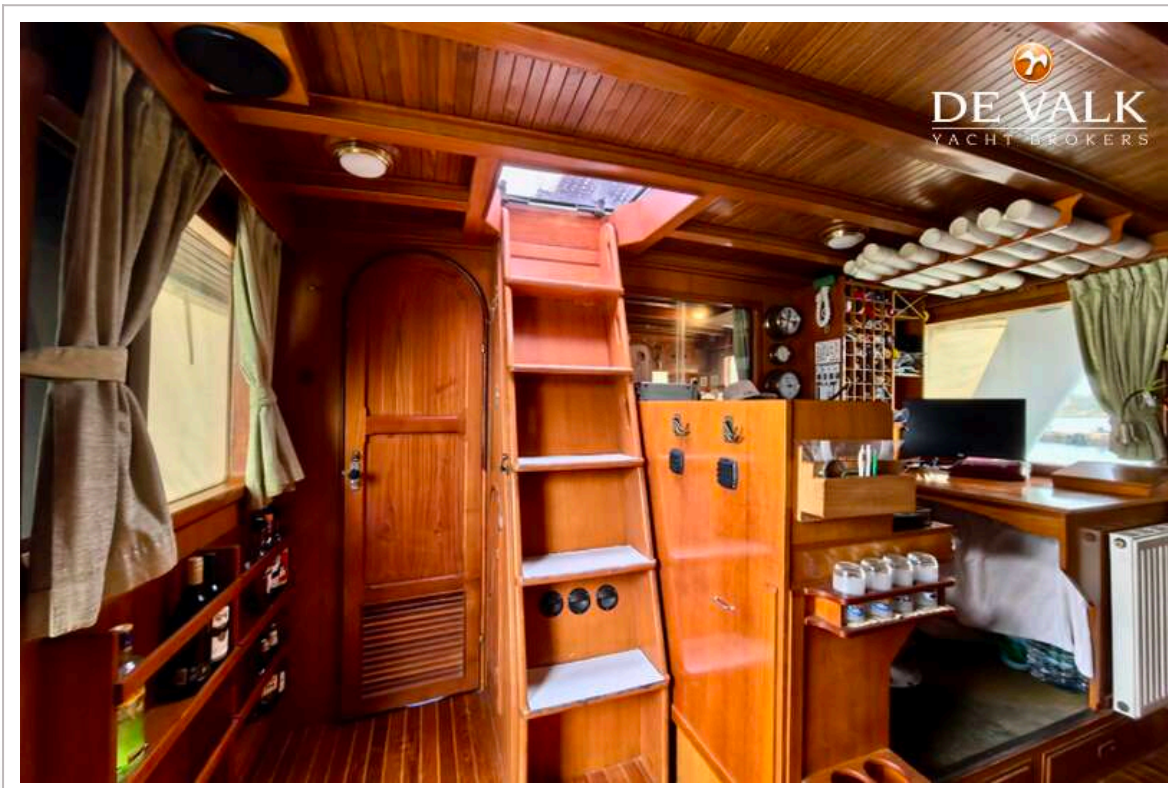
# BLUE OCEAN 50



# BLUE OCEAN 50



# BLUE OCEAN 50





# BLUE OCEAN 50

