



## DUTCHBARGE 1900



**DE VALK**  
YACHT BROKERS

# DUTCHBARGE 1900

## BROKER'S COMMENTS

Dutch Traveller Luxe Motor 1900, Very well-maintained luxury motor yacht with a warm, classic appearance. In 2024, the vessel underwent extensive renovations: the underwater hull was treated with new antifouling, the hull was repainted, all interior lighting was replaced with LED, and an Enteron 50 wastewater system was installed. Comfortable, fully equipped and ready-to-sail motor yacht with reliable technology, large tanks, ideal dimensions for France, ample living space, not subject to CVO regulations, and perfect for long-term stays on board.

*Ian Pols*

## SPECIFICATIONS

<b>Dimensions</b>	19.00 x 5.00 x 1.10 (m)	<b>Builder</b>	
<b>Built</b>	2007	<b>Cabins</b>	2
<b>Material</b>	Steel	<b>Berths</b>	4
<b>Engine(s)</b>	1 x John Deere	<b>Hp/Kw</b>	225.00 (hp), 165.60 (kw)
<b>Asking price</b>	€ 595.000 (VAT Paid)	<b>Lying</b>	at sales office

## CONTACT

<b>Sales office</b>	De Valk Altena	<b>Telephone</b>	+31 162 727211
<b>Address</b>	Keizersveer 3A 4941 TA Raamsdonksveer NL	<b>E-mail</b>	altena@devalk.nl

## DISCLAIMER

These particulars are given in good faith as supplied but cannot be guaranteed.



# DUTCHBARGE 1900

## GENERAL

<b>Model</b>	DUTCHBARGE 1900
<b>Type</b>	motor yacht
<b>LOA (m)</b>	19,00
<b>Beam (m)</b>	5,00
<b>Draft (m)</b>	1,10
<b>Year built</b>	2007
<b>Country</b>	The Netherlands
<b>Ballast (tonnes)</b>	10 ton
<b>CE norm</b>	B
<b>Hull material</b>	steel
<b>Hull colour</b>	blue
<b>Hull shape</b>	round-bilged
<b>Superstructure material</b>	steel
<b>Deck material</b>	teak
<b>Deck finish</b>	teak
<b>Superstructure deck finish</b>	non-skid paint
<b>Antifouling (year)</b>	2024
<b>Window material</b>	double glazing
<b>Deckhatch</b>	yes
<b>Portholes</b>	copper
<b>Insulation</b>	foam
<b>Mast can be lowered</b>	hydraulic
<b>Fuel tank (litre)</b>	steel 2500 L
<b>Fuel tank 2 (litre)</b>	steel 2500 L
<b>Level indicator (fuel tank)</b>	yes
<b>Freshwater tank (litre)</b>	stainless steel 3000 L
<b>Level indicator (freshwater)</b>	yes
<b>Blackwater tank (litre)</b>	stainless steel 1500 L
<b>Level indicator (blackwater)</b>	yes
<b>Blackwater tank extraction</b>	deck extraction Vuilwater reinigingssysteem Enteron 50



# DUTCHBARGE 1900

<b>Wheel steering</b>	hydraulic
<b>Inside helm position</b>	yes
<b>More info on hull</b>	Geschilderd in 2024
<b>More info on paintwork</b>	2 componenten
<b>Extra info</b>	Onderhoud is altijd door een werf uitgevoerd

## ACCOMMODATION

<b>Cabins</b>	2
<b>Berths</b>	4
<b>Interior</b>	cherry
<b>Floor</b>	wood
<b>Saloon</b>	yes
<b>Headroom saloon (m)</b>	195 cm
<b>Heating</b>	central hot water Kabola tap B17
<b>Air-conditioning</b>	single cycle airco
<b>Sliding door to cockpit</b>	yes
<b>Countertop</b>	corian
<b>Sink</b>	stainless steel
<b>Oven</b>	yes
<b>Fridge</b>	1x keuken & 1x gastenhut
<b>Freezer</b>	2x lade 0 graden in koelkast
<b>Hot water system</b>	on central heating
<b>Water pressure system</b>	electrical
<b>Dishwasher</b>	Siemens
<b>Owners cabin</b>	French bed
<b>Wardrobe</b>	hanging/drawers/shelves
<b>Bathroom</b>	separate
<b>Toilet</b>	separate
<b>Toilet system</b>	electric
<b>Wash basin</b>	in the bathroom
<b>Shower</b>	separate



# DUTCHBARGE 1900

<b>Bath tub</b>	separate
<b>Guest cabin 1</b>	double bed
<b>Wardrobe</b>	drawers and shelves
<b>Bathroom</b>	en suite
<b>Toilet</b>	en suite
<b>Toilet system</b>	electric
<b>Shower</b>	en suite
<b>Washing machine/dryer combi</b>	Miele
<b>Extra info</b>	Dimbare LED verlichting door het gehele schip

## MACHINERY

<b>No of engines</b>	1
<b>Make</b>	John Deere
<b>HP</b>	225
<b>kW</b>	165.60
<b>Engine cooling system</b>	freshwater heat exchanger
<b>Engine controls</b>	electrical
<b>Gearbox</b>	hydraulic TwinDisk
<b>Bowthruster</b>	hydraulic
<b>Propeller type</b>	fixed
<b>Propeller shaft material</b>	stainless steel
<b>Shaft lubrication</b>	water
<b>Electric bilge pump</b>	yes
<b>Bilge alarm</b>	yes
<b>Electrical installation</b>	24V, 220V
<b>Generator</b>	wet exhaust Mastervolt 12 kW
<b>Running hours generator</b>	1270, 13-01-2026
<b>Batteries</b>	6 x 230 Ah semi-tractie (2021)
<b>Start battery</b>	2x 230 Ah semi-tractie (2021)
<b>Generator battery</b>	12V
<b>Battery monitor</b>	Victron



# DUTCHBARGE 1900

<b>Battery charger/inverter</b>	Victron Quattro II 5000/25
<b>Solar panel</b>	4x 340 Wh
<b>Shorepower</b>	with cable
<b>Insulation transformer</b>	Victron 3600W
<b>Extra info</b>	Fuel polish system Macfil AR300
<b>Extra info</b>	November 2020 zijn de brandstoftanks gereinigd

## NAVIGATION

<b>Compass</b>	Raymarine
<b>Depth sounder</b>	Raymarine ST60+
<b>Log</b>	Raymarine ST60+
<b>Windset</b>	Raymarine ST60+
<b>VHF</b>	Raymarine 240E
<b>Autopilot</b>	Raymarine ST8002
<b>Radar</b>	Raymarine E120
<b>GPS</b>	Raymarine
<b>Plotter</b>	Raymarine E120
<b>AIS transceiver</b>	Raymarine RM700
<b>Camera</b>	yes
<b>Navigation lights</b>	yes
<b>Searchlight</b>	yes

## EQUIPMENT

<b>Sprayhood</b>	yes
<b>Sun awning</b>	Voor de ramen aan een zijkant en voor de kuitent
<b>Anchor</b>	yes
<b>Anchor chain</b>	yes
<b>Windlass</b>	hydraulic
<b>Deck wash</b>	Voor- & achterschip
<b>Deck crane</b>	hydraulic
<b>Sea railing</b>	stainless steel



# DUTCHBARGE 1900

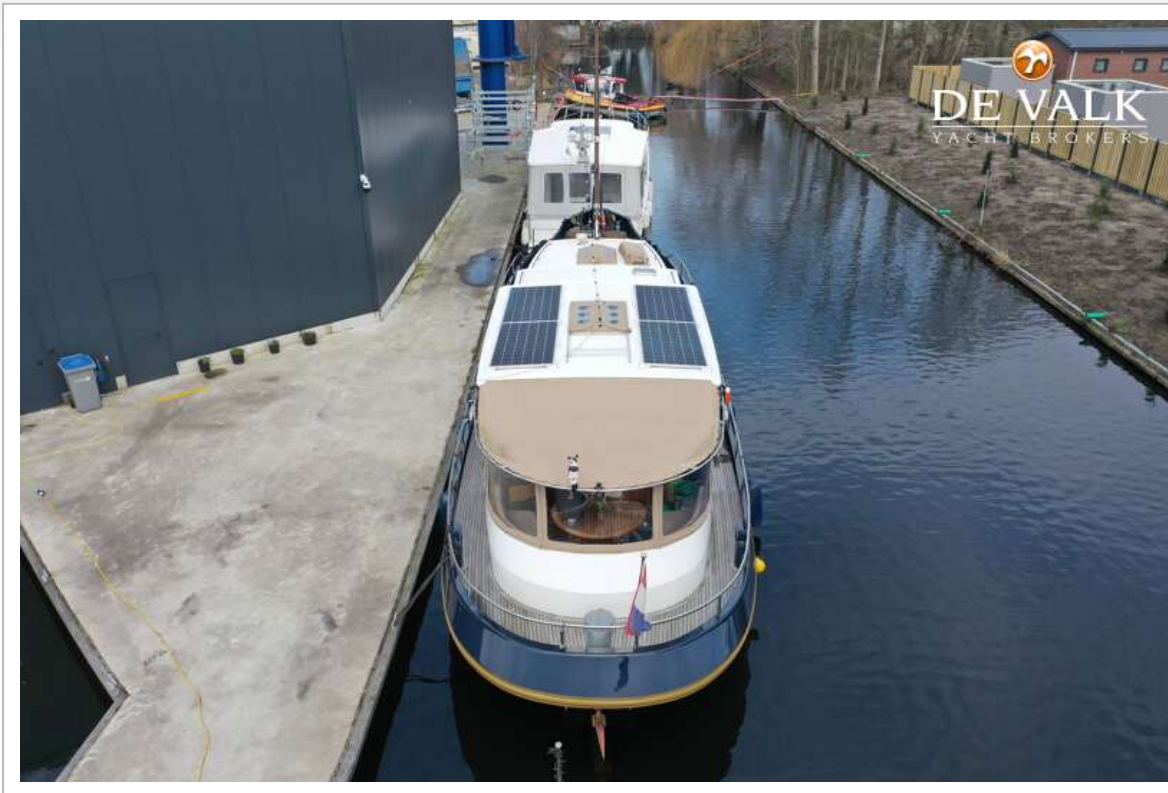
<b>Wiper</b>	yes
<b>Horn</b>	yes
<b>Fenders</b>	yes
<b>Mooring lines</b>	yes
<b>TV</b>	yes
<b>Radio-cd player</b>	yes
<b>Cockpit speakers</b>	Door radio in de stuurhut
<b>Speakers in salon</b>	Bose
<b>Fire extinguisher</b>	yes
<b>Extra info</b>	2 kluizen aan boord



# DUTCHBARGE 1900



# DUTCH BARGE 1900



# DUTCHBARGE 1900



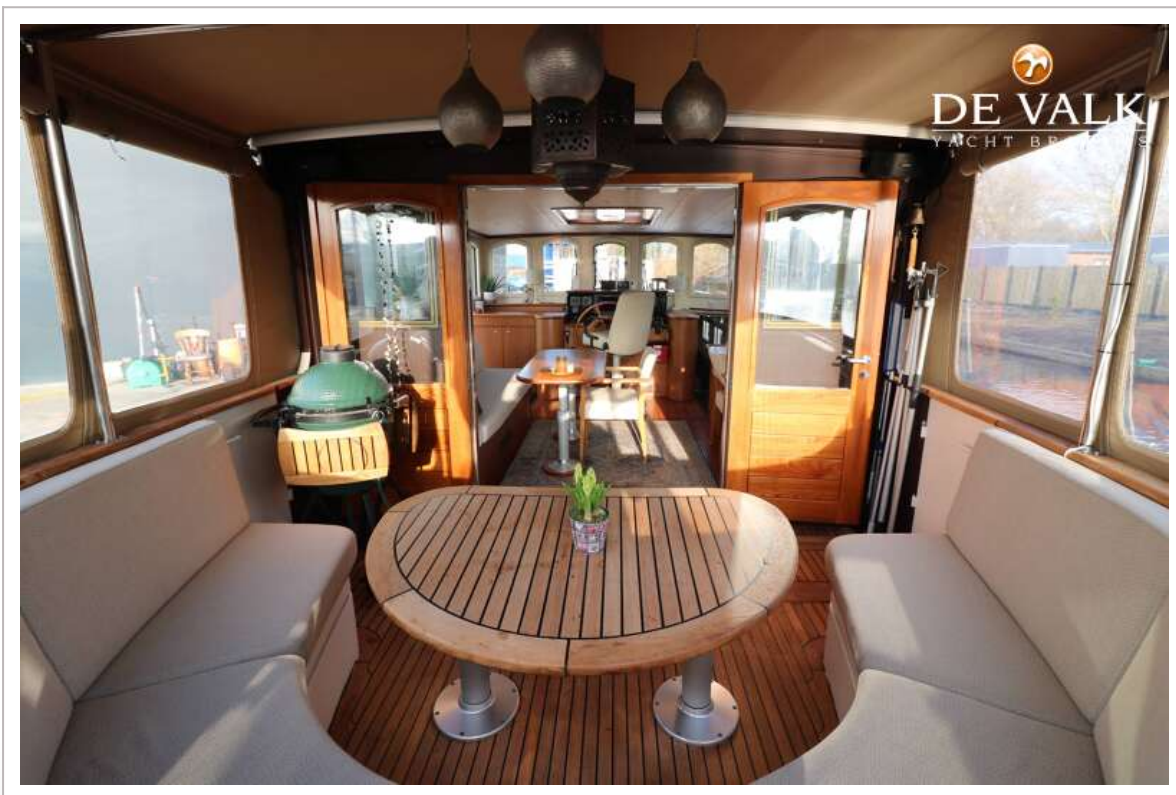
# DUTCHBARGE 1900



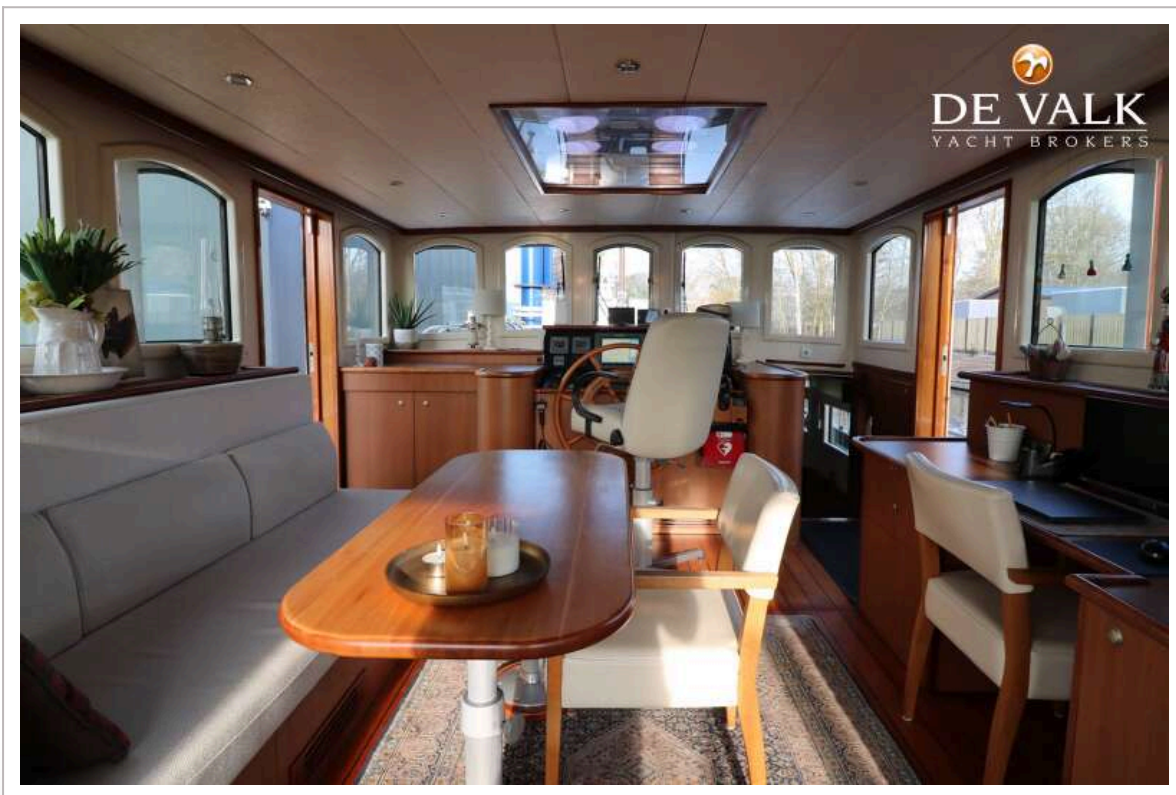
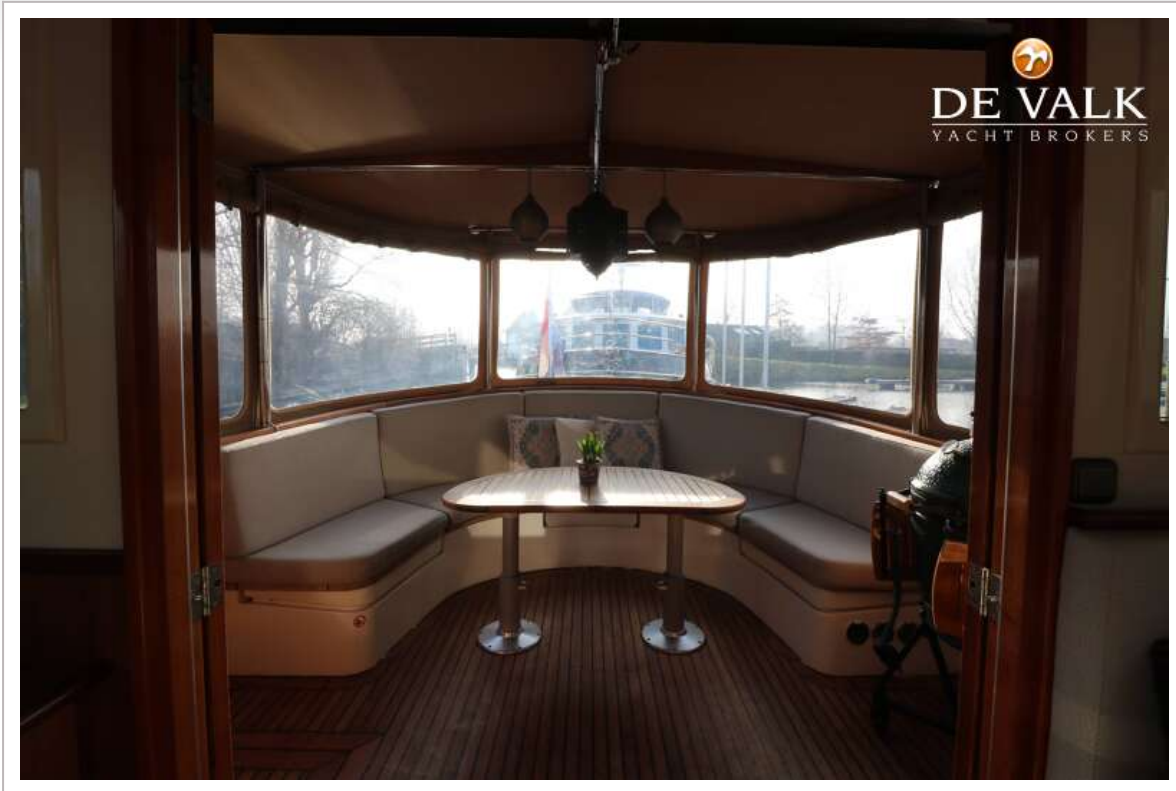
# DUTCHBARGE 1900



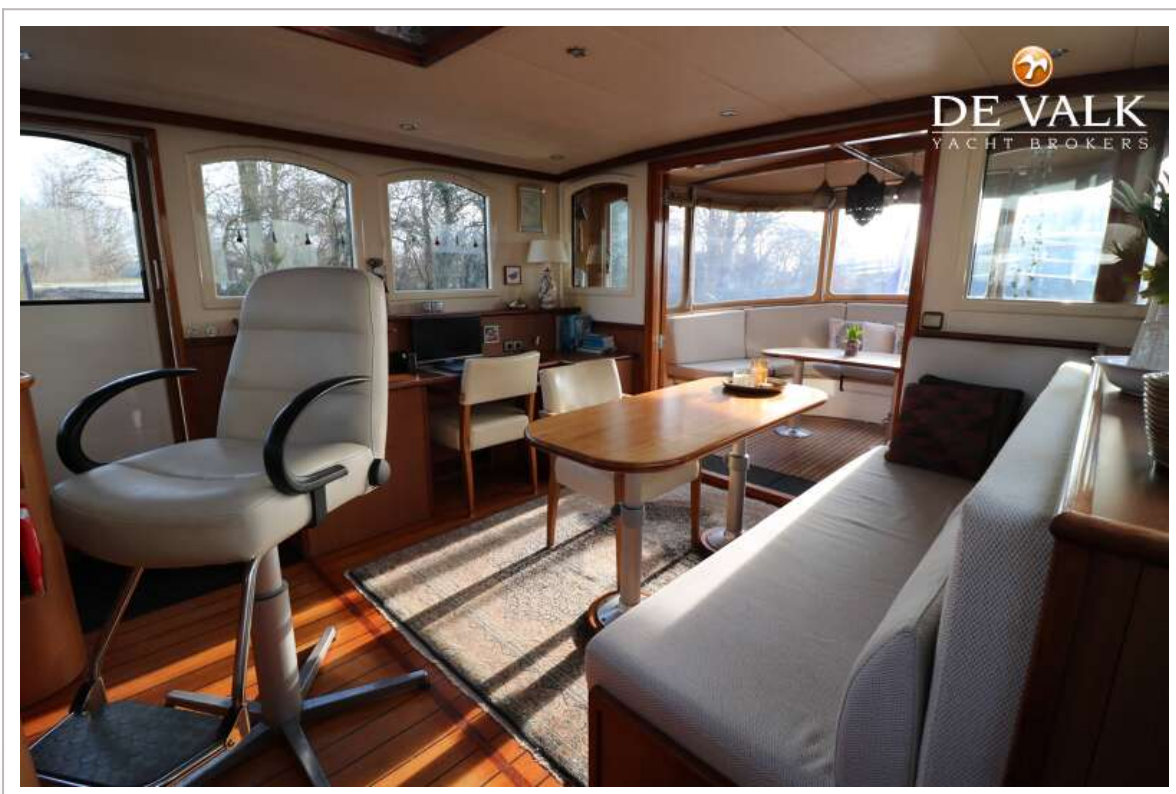
# DUTCHBARGE 1900



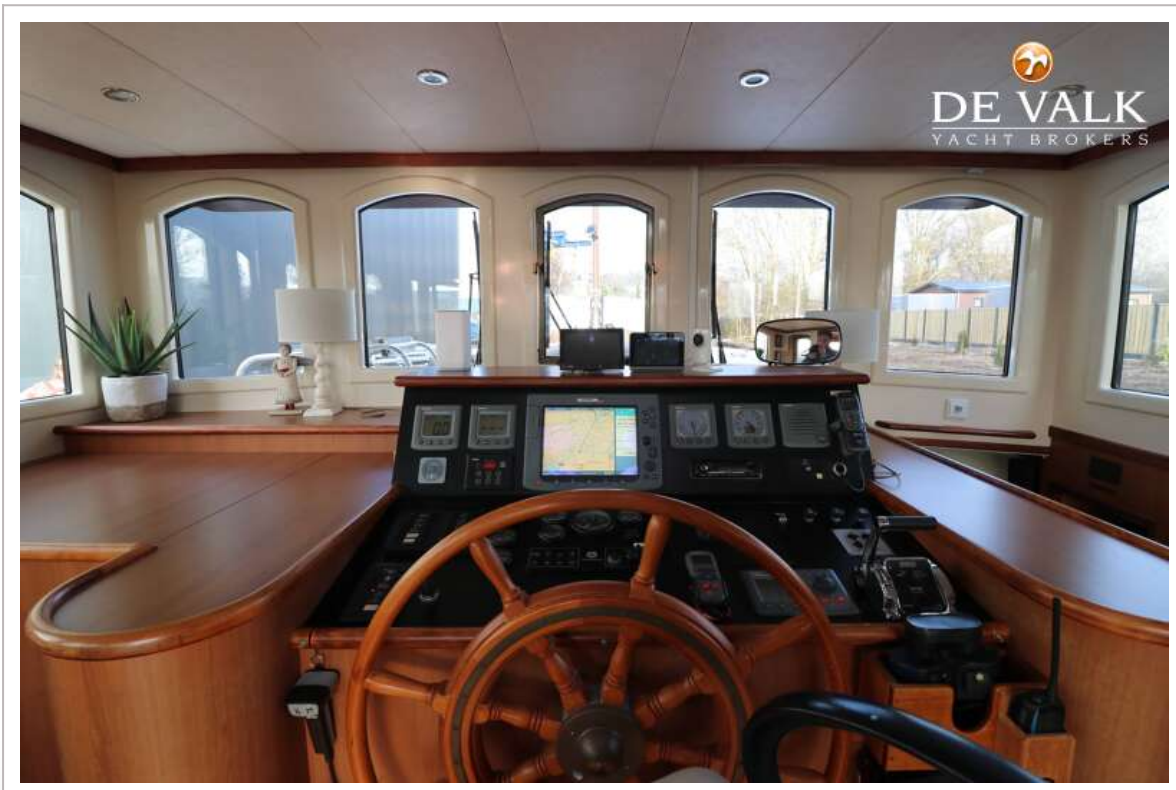
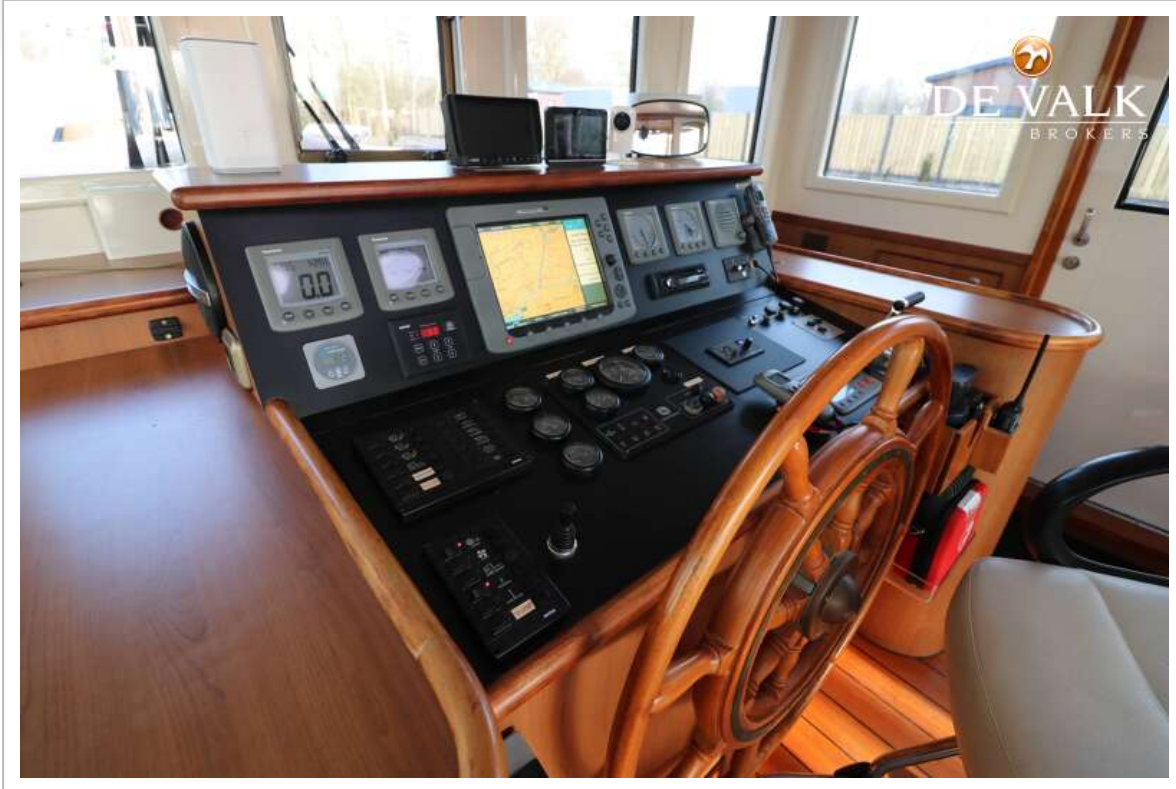
# DUTCHBARGE 1900



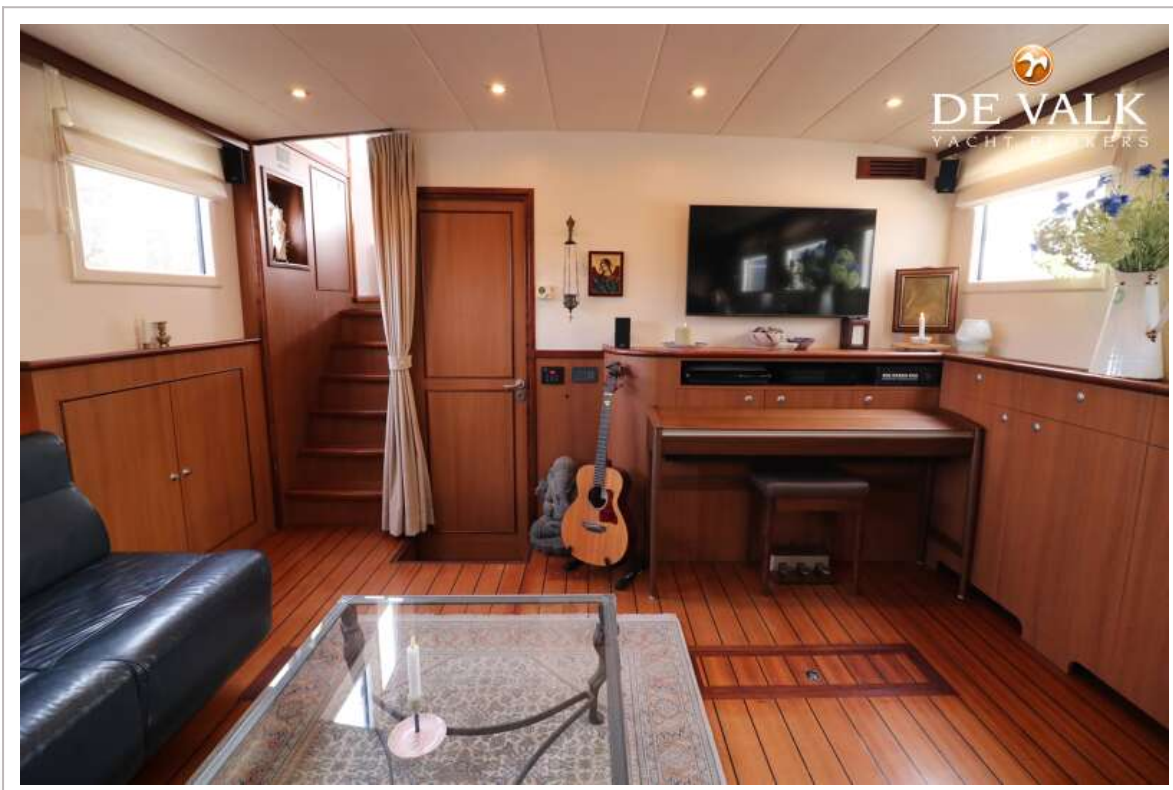
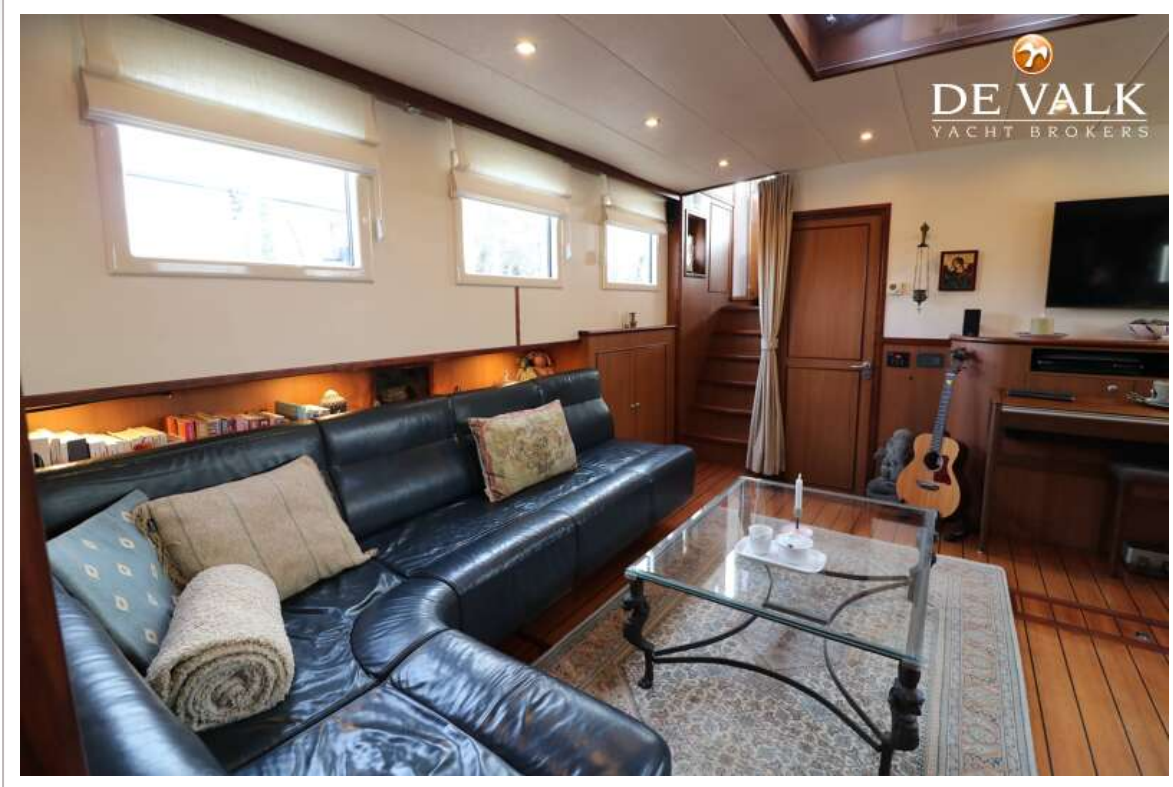
# DUTCHBARGE 1900



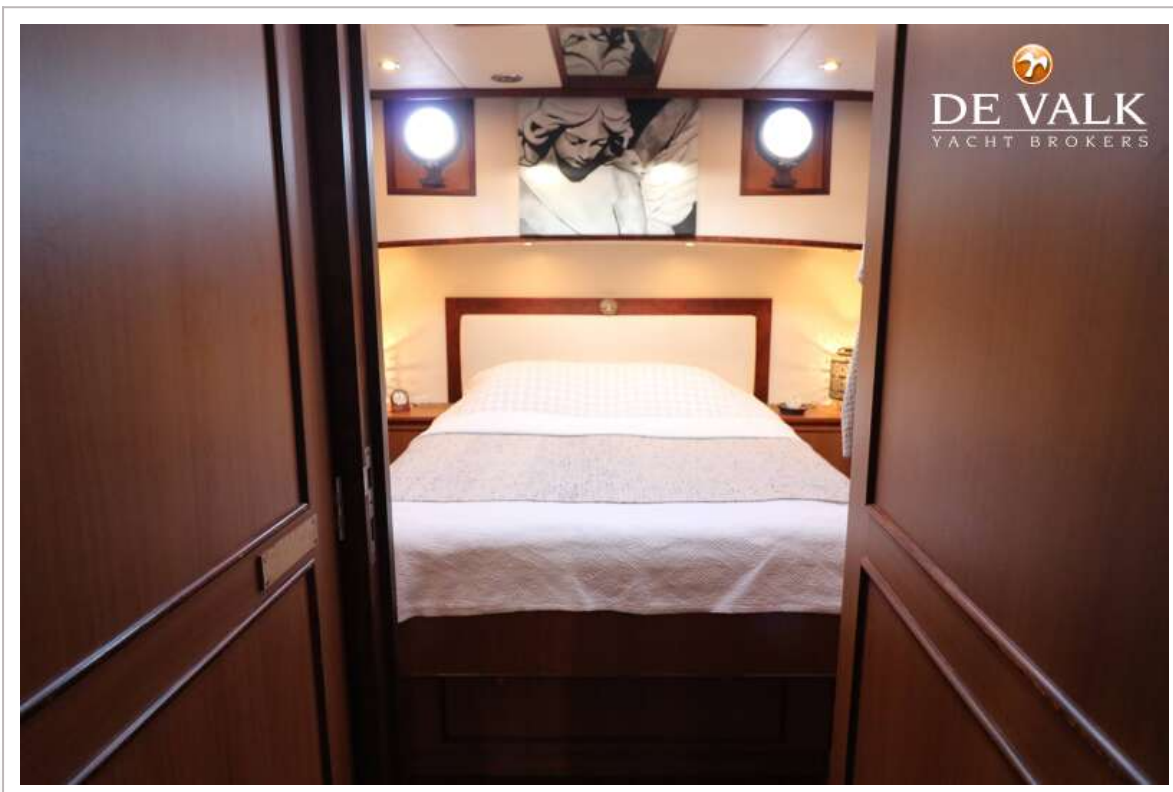
# DUTCHBARGE 1900



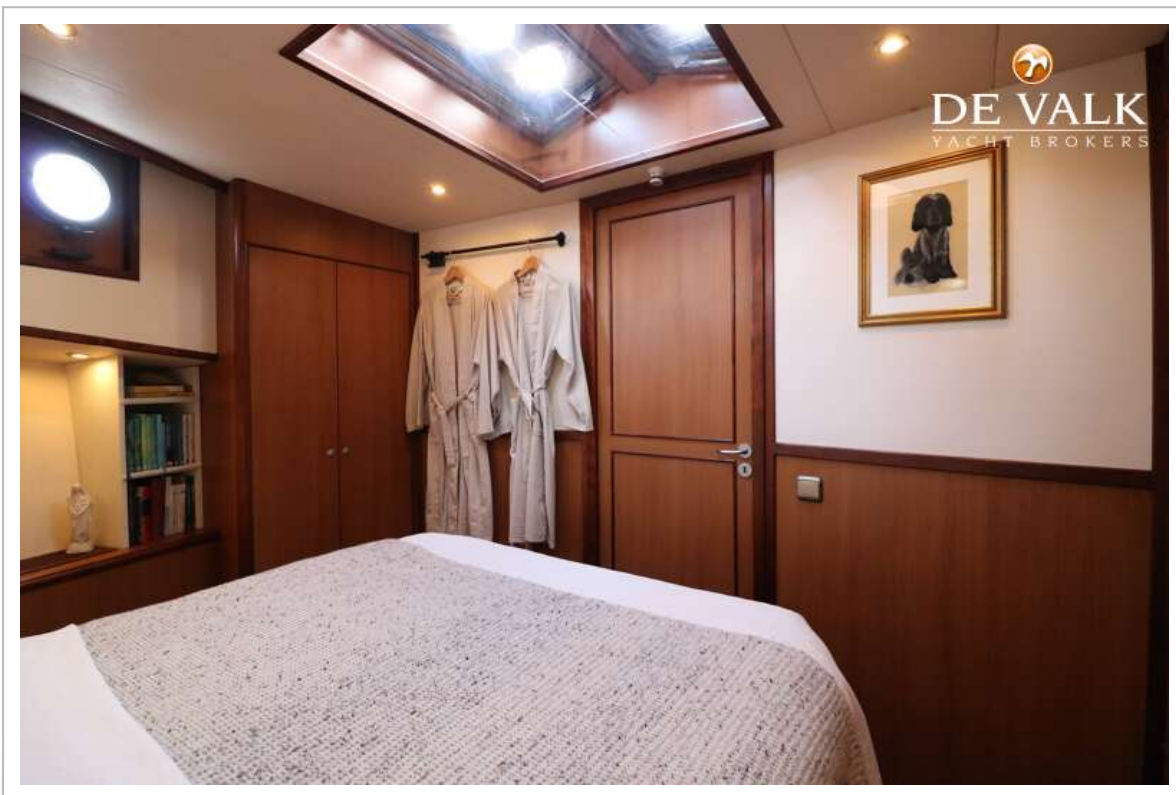
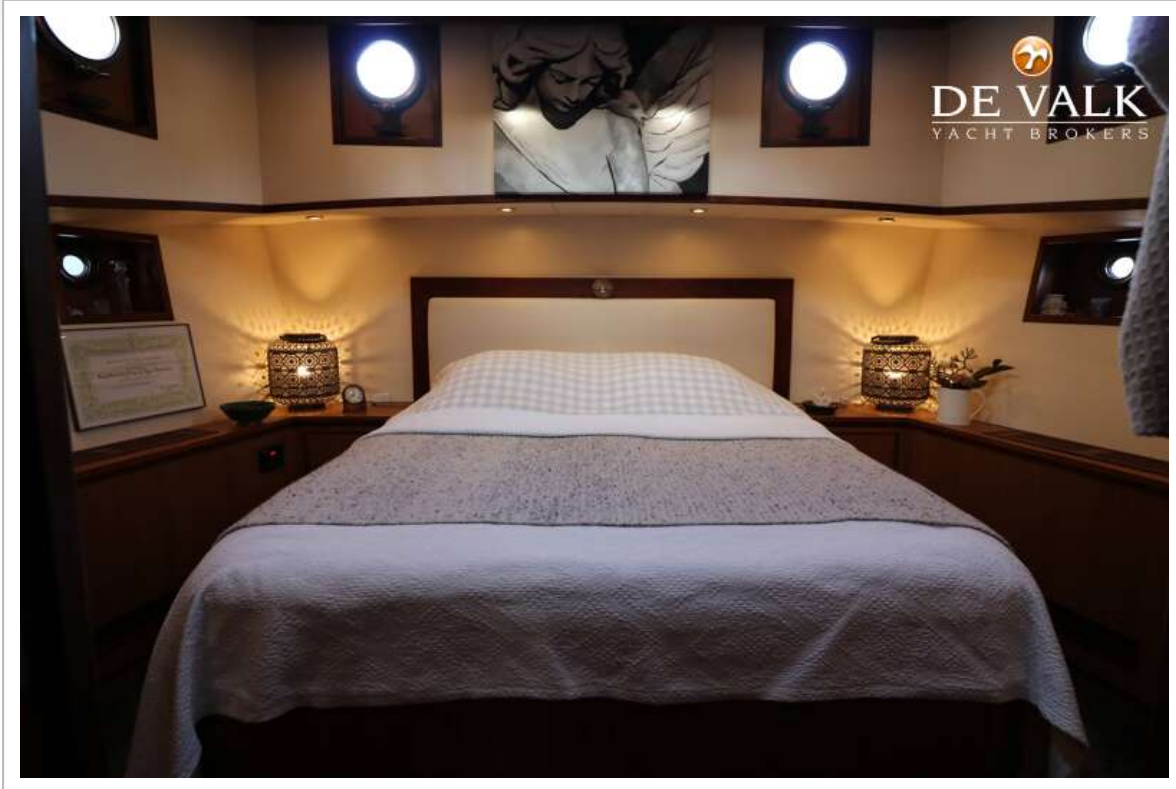
# DUTCHBARGE 1900



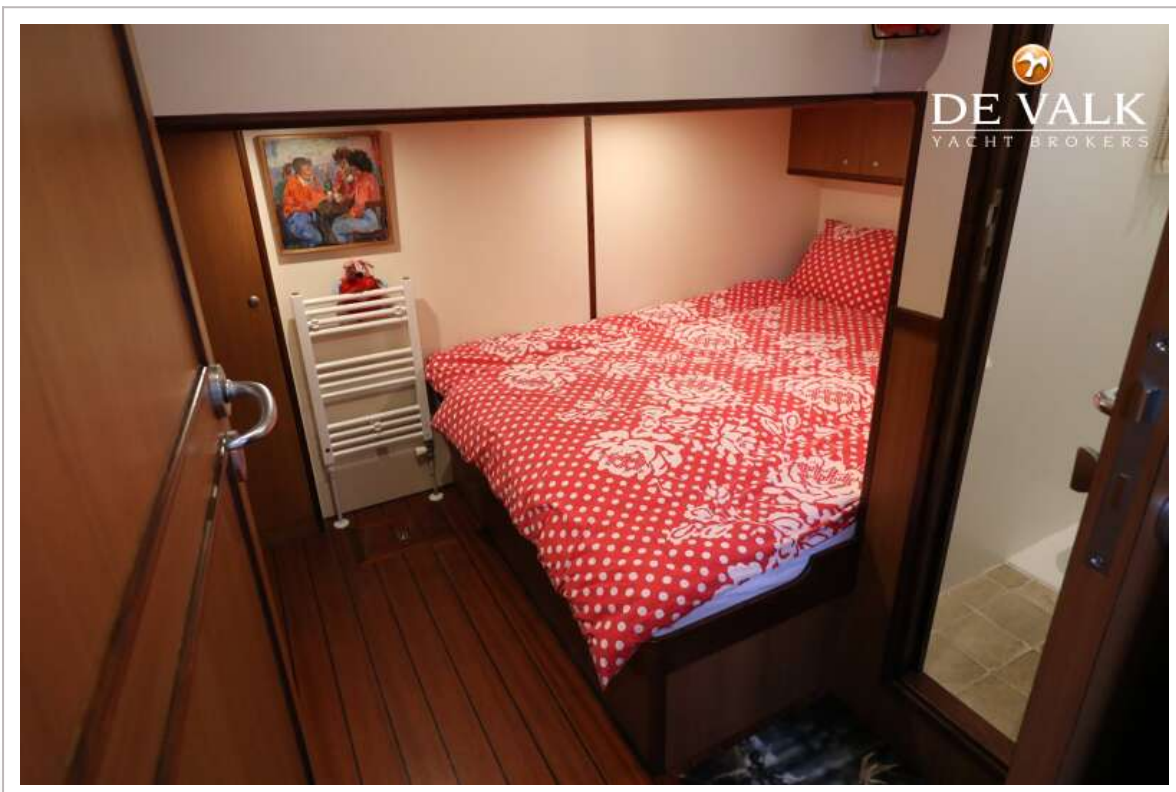
# DUTCHBARGE 1900



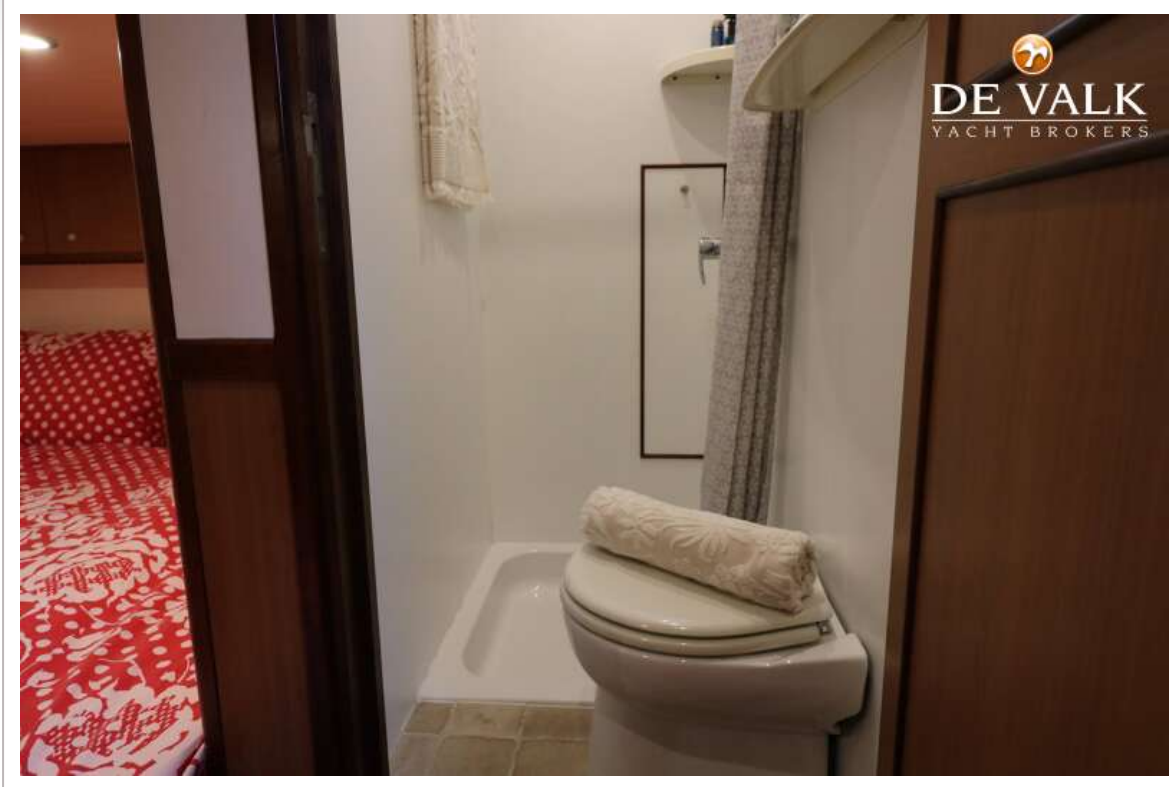
# DUTCHBARGE 1900



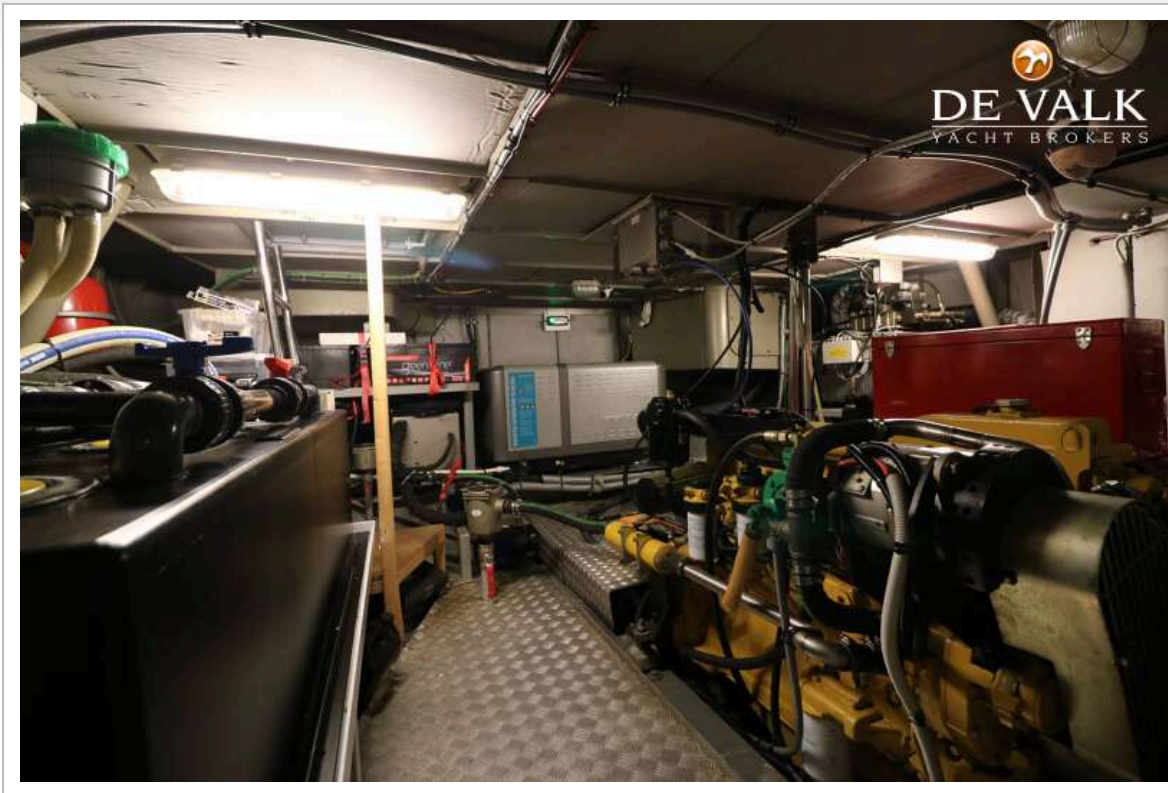
# DUTCHBARGE 1900



# DUTCHBARGE 1900



# DUTCHBARGE 1900



# DUTCHBARGE 1900

