



DE VALK  
YACHT BROKERS



## EUROTRAWLER 1750



DE VALK  
YACHT BROKERS

# EUROTRAWLER 1750

## BROKER'S COMMENTS

The Eurotrawler 1750 is an extremely spacious, safe and seaworthy vessel designed and built for 365 days of use in warm and cold climatic conditions. Its spacious, light-filled saloon and French doors provide a wonderful living space. Below deck, there are 2 bathrooms and 3 bedrooms, including a spacious ensuite owners' cabin. 2 economical engines provide a range of 3000 nm, while stabilizers, bow- and stern thrusters ensure pleasant sailing and easy manoeuvring in the harbour. A wonderful yacht with lots of storage space for permanent residence. Transport to Northern Europe can be arranged.

*Willem Koopmans*

## SPECIFICATIONS

<b>Dimensions</b>	16.95 x 5.20 x 1.50 (m)	<b>Builder</b>	Jachtwerf De Toekomst - Waspik
<b>Built</b>	2005	<b>Cabins</b>	3
<b>Material</b>	Steel	<b>Berths</b>	6
<b>Engine(s)</b>	2 x Iveco 8061M14 diesel	<b>Hp/Kw</b>	2 x 145.00 (hp), 106.58 (kw)
<b>Asking price</b>	€ 449.500 (VAT Paid)	<b>Lying</b>	elsewhere / Not at sales office

## CONTACT

<b>Sales office</b>	De Valk Costa Blanca	<b>Telephone</b>	+34 96 50 21 569
<b>Address</b>	Costa Blanca Region 03730 Javea Alicante ES	<b>E-mail</b>	costablanca@devalk.nl

## DISCLAIMER

These particulars are given in good faith as supplied but cannot be guaranteed.



# EUROTRAWLER 1750

## GENERAL

Model	EUROTRAWLER 1750
Type	motor yacht
LOA (m)	16,95
Beam (m)	5,20
Draft (m)	1,50
Air draft (m)	4,30
Headroom (m)	2,10
Year built	2005
Launched	2006
Builder	Jachtwerf De Toekomst - Waspik
Country	The Netherlands
Designer	Vripack en Jachtwerf De Toekomst
Displacement (t)	42
CE norm	A
Hull material	steel
Hull colour	blue
Hull thickness (mm)	8
Hull shape	round-bilged
Superstructure material	steel
Superstructure (mm)	6
Rubbing strake	stainless steel
Deck material	steel
Deck finish	teak Sikaflex needs some attention (scheduled) *
Superstructure deck finish	paint
Cockpit deck finish	teak Teak sealer treated *
Antifouling (year)	2024, planning February 2026
Window frame	aluminium Hora
Window material	double glazing
Deckhatch	1
Portholes	12



# EUROTRAWLER 1750

Insulation	glasswool PE-foam +
Flybridge	Access to roof solar with bimini
Flybridge cover	Bimini
Radar arch	collapsible
Mast can be lowered	electric
Fuel tank (litre)	steel 4500
Fuel tank 2 (litre)	steel 600
Level indicator (fuel tank)	peilglas Level gauge via sight glass
Freshwater tank (litre)	stainless steel 2000
Level indicator (freshwater)	yes
Blackwater tank (litre)	stainless steel 450
Blackwater tank extraction	pump
Wheel steering	hydraulic Wheel and follow-up
Inside helm position	with Simrad U25 follow-up
More info on hull	Hull paintwork partly redone 2024
More info on paintwork	Roof will be painted February 2026
Extra info	Outside steering via Simrad remote * teak sealer treated, dark colour will disappear
Extra info	CVO certificaton Needs renewal
Extra info	Perfect 365 live on board in hot and cold climate

## ACCOMMODATION

Cabins	3
Berths	6
Interior	teak
Floor	vinyl Teak motiv
Open cockpit	yes
Aft deck	yes
Pilot house/deck saloon	with panoramic view of the surroundings
Saloon	can seat up to 14 persons
Headroom saloon (m)	2,10



# EUROTRAWLER 1750

Heating	Webasto DBW (2010)
Air-conditioning	reverse cycle airco Webasto-ASP
Dinette	with extension table top
Opening door to aft deck	can be fully opened
Galley	yes
Countertop	Duropal
Sink	stainless steel
Cooker	induction Bosch (2017)
Extractor	Atag
Microwave/oven combi	Samsung (2017)
Fridge	2x Bosch
Freezer	in fridge compartments
Hot water system	220V 1x Webasto + 1x
Water pressure system	electrical
Owners cabin	French bed Full-beam
Bed length (m)	2,00 x 2,00
Wardrobe	hanging/drawers/shelves
Bathroom	en suite
Toilet	en suite
Toilet system	electric
Wash basin	in the bathroom
Shower	en suite
Extra info	with walk-in closet
Guest cabin 1	double bed In front
Bed length (m)	2,00 x 1,80
Wardrobe	hanging and shelves
Bathroom	shared
Toilet	shared
Toilet system	electric
Wash basin	in the bathroom
Shower	shared
Guest cabin 2	twin single



# EUROTRAWLER 1750

Bed length (m)	2,00 x 0,75
Wardrobe	hanging and drawers
Bathroom	shared
Toilet	shared
Toilet system	electric
Wash basin	in the bathroom
Shower	shared
Washing machine/dryer combi	Bosch (220 V)
Extra info	Excellent level floor layout of the salon and deck. Premium accessibility going forward and aft.

## MACHINERY

No of engines	2
Make	Iveco
Type	8061M14
HP	145
kW	106.58
Fuel	diesel
Year installed	2005
Maximum speed (kn)	9,5 - 10
Cruising speed (kn)	8
Consumption (l/hr)	10
Range (nm)	3000
Engine hours	1124/1111
Engine cooling system	freshwater heat exchanger
Drive	shaft
Engine controls	electrical Morse
Gearbox	mechanical Twindisk TM170
Bowthruster	electric Kalkman 28 hp
Sternthruster	electric Kalkman 28 hp
Exhaust	watercooled



# EUROTRAWLER 1750

Thrust bearing	Amartech (2012)
Propeller blades	4
Propeller shaft material	stainless steel
Shaft lubrication	water
Electric bilge pump	+ backup pump
Electrical installation	12/24V/230V
Generator	wet exhaust Iveco 8065 M12 + newage 70 kW
Running hours generator	454
Start battery	+ 4 x (2024) 4x (2024)
Service battery	+ set 640ah (2017) Traction set 1200 Ah (2017)
Battery monitor	Victron
Battery charger	Victron Phoenix 24V/25 Amp
Battery charger/inverter	1x Victron 24/3000/70 plus 1x Victron 24/5000/120
Wind generator	Airbreeze (2015)
Diode battery combiners	yes
Shorepower	with cable
Stabilizers	RotorSwing 6 kW (2015)
Extra info	Webasto kickspace engine room heating
Extra info	RotorSwing is silent running and has extra safety features. Thrusters are steplessly adjustable
Extra info	Many onboard features have been upgraded for autonomous and comfortable onboard living. The diesels are silent running and very economical in use and maintenance.

## NAVIGATION

Compass	yes
Electric compass	via autopilot RC35 rate
Depth sounder/log	Simrad IS15
Forw. looking depth sounder	Simrad Sonar/plotter (2017)
Log	yes
Windset	yes
VHF	+ Simrad RS82 Gmdss (2017) Simrad RS81



# EUROTRAWLER 1750

VHF handheld	Icom
Autopilot	+ remote control Simrad AP25
Rudder angle indicator	Simrad IS15
Radar	4 kW radome
Plotter	+ LCD display & wifi (2017) Hyston nav computer
Radar/GPS/plotter	Simrad CX45
Navtex	printer Furuno NX500
PC connection	yes
Wifi antenna	yes
Electronic chart(s)	extended Europe (2017)
AIS transponder	Class B (2017) Em-Track A100
EPIRB	Ocean Signal (battery till 2028)
Camera	3x deck + engineroom 4x (+ recorder)
Navigation lights	yes
Searchlight	Jabsco remote
Extra info	Icom walkie-talkie set (2017) Garmin Inreach tracking system (2017) All navigation systems are interfaced.

## EQUIPMENT

Cockpit cover	(2017) full enclosure and infrared heating on sealing
Bimini	yes
Cockpit cushions	yes
Cockpit table	Teak
Cockpit chairs	2
Bathing platform	Non-skid paint
Boarding ladder	stainless steel
Transom door	yes
Gangway	New 2023
Deck shower	yes
Anchor	CQR Plough
Anchor chain	60 mtr





# EUROTRAWLER 1750

Windlass	electrical Lofrans
Capstan	yes
Deck wash	yes
Dinghy	inflatable Goldenship 2023
Outboard	fourstroke Honda 8 hp
Deck crane	manual 125 kg
Sea railing	stainless steel
Railing side opening gates	2x
Life raft	valise (or bag) New November 2021, approved until November 2028
Life raft (pers)	4
Lifejackets	yes
Wiper	with wash 5x Exalto
Horn	yes
Radar reflector	yes
Fenders	yes
Mooring lines	yes
TV	LG
TV receiver	no subscription Digitenne
TracVision ball	KVH Trackvision
Radio-cd player	JVC
Speakers in salon	yes
Speakers in cabin	yes
Clock - barometer	yes
Fire extinguisher	5x new December 2024
Extinguisher in engine room	New November 2025
Extra info	Large (4m3) storage room aft with electric deck-hatch



# EUROTRAWLER 1750





# EUROTRAWLER 1750

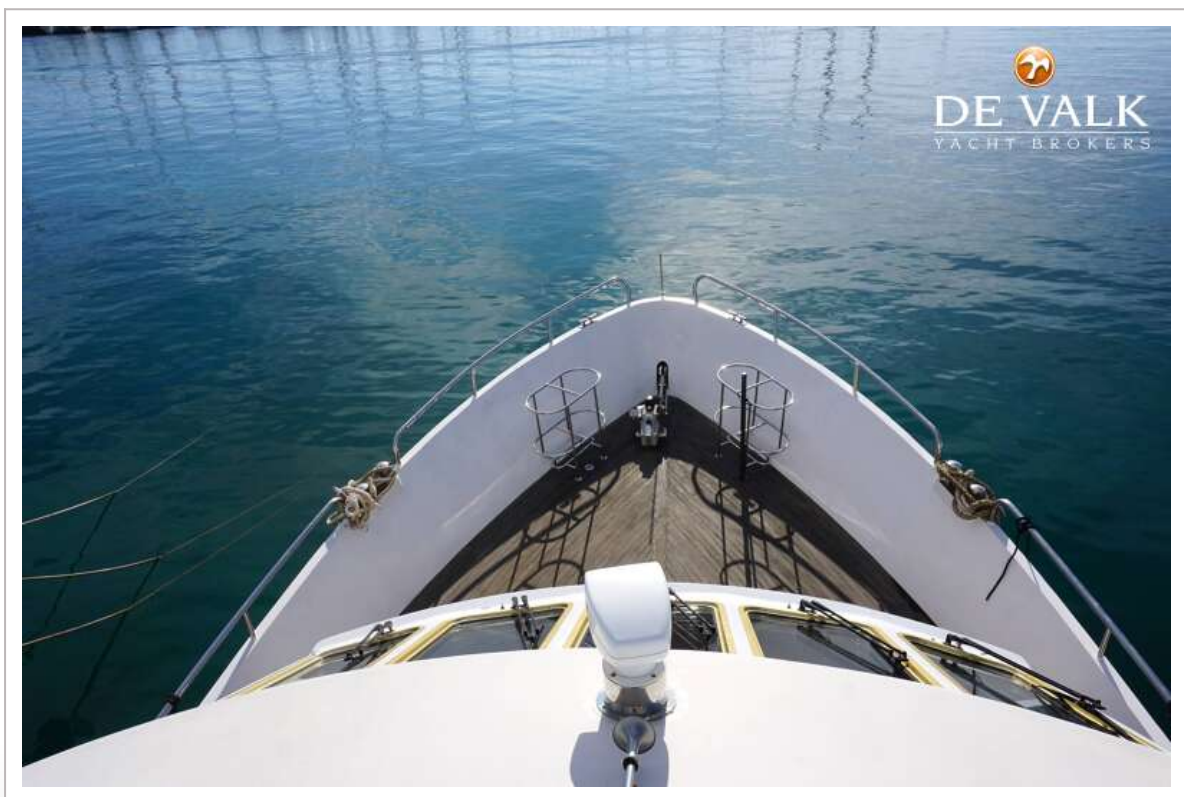




# EUROTRAWLER 1750

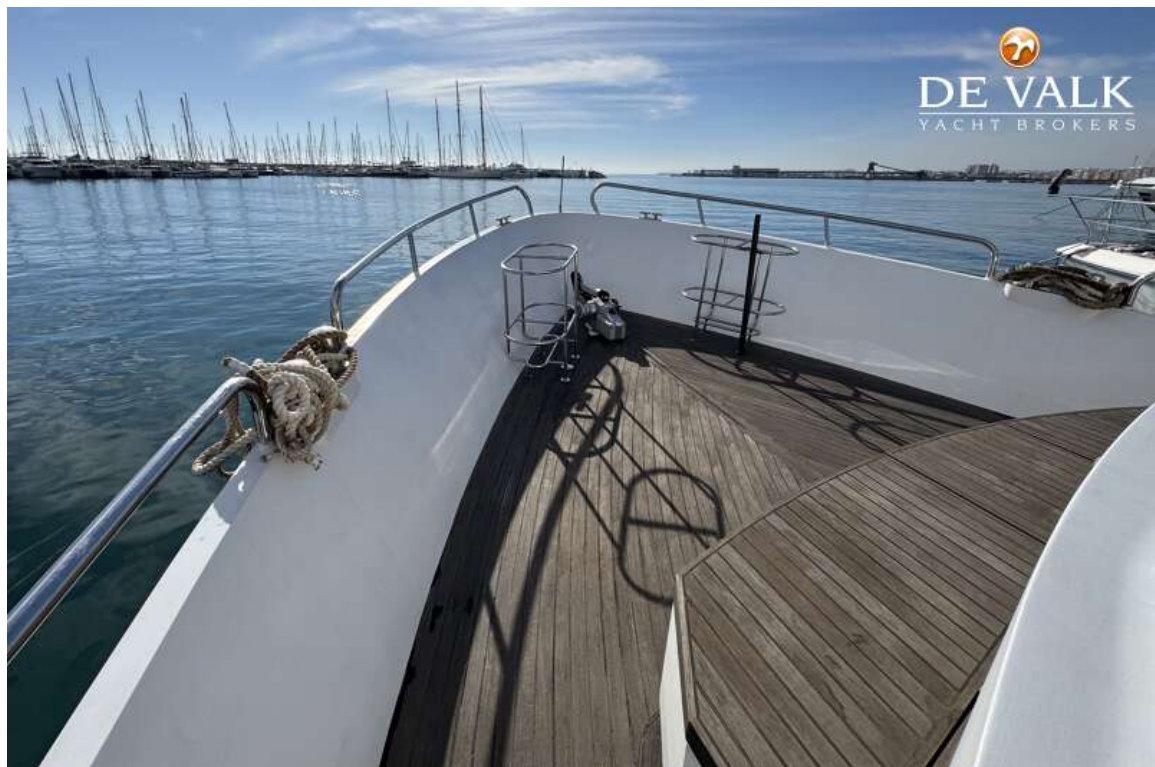


# EUROTRAWLER 1750





# EUROTRAWLER 1750



# EUROTRAWLER 1750





# EUROTRAWLER 1750





# EUROTRAWLER 1750

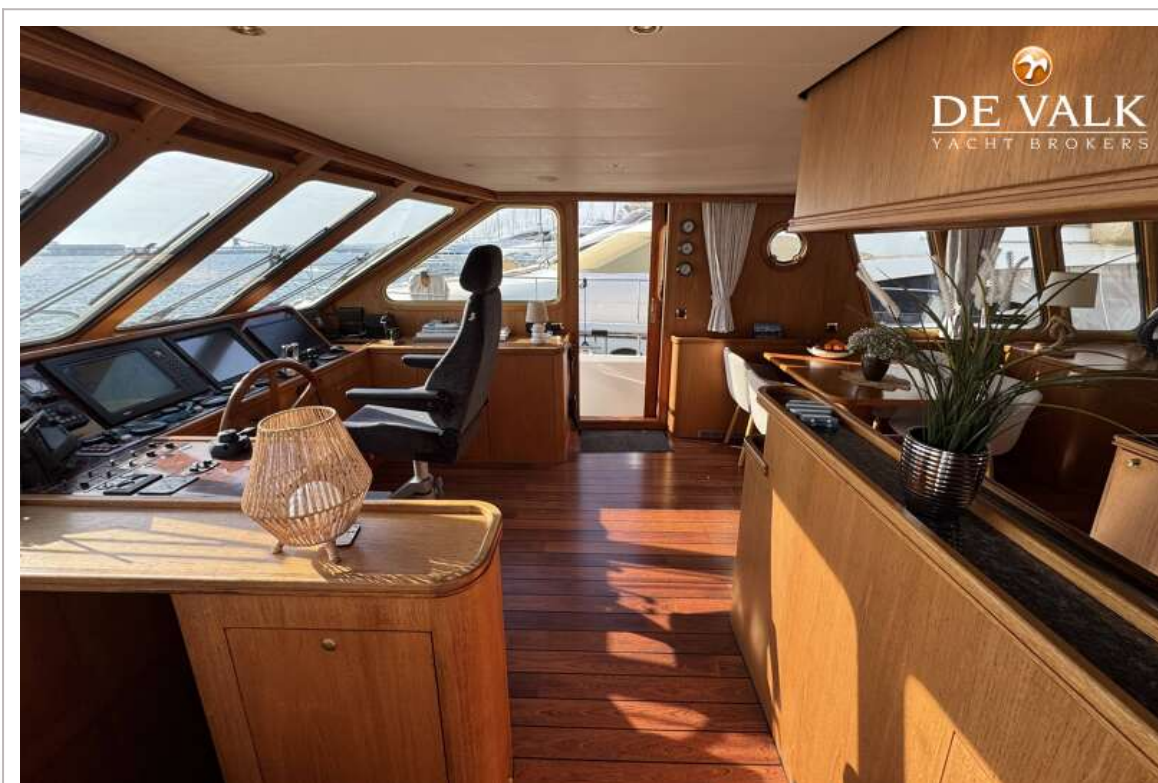


# EUROTRAWLER 1750

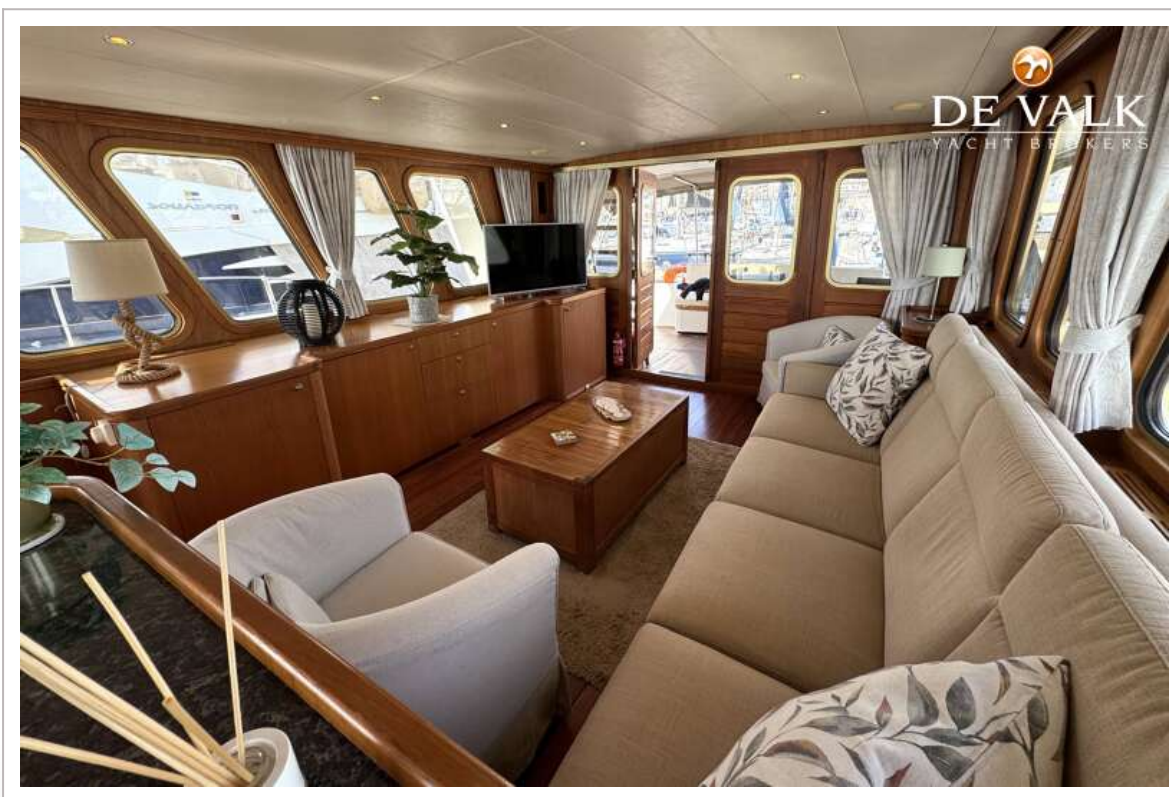
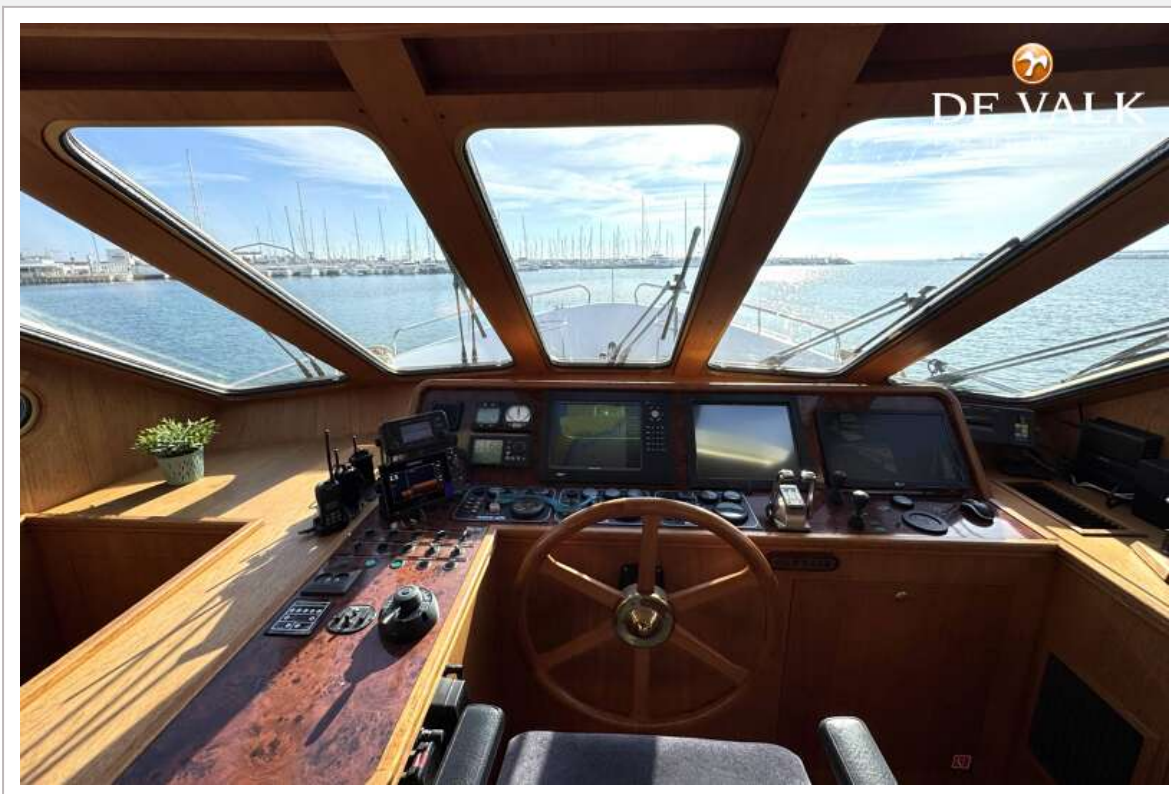




# EUROTRAWLER 1750



# EUROTRAWLER 1750



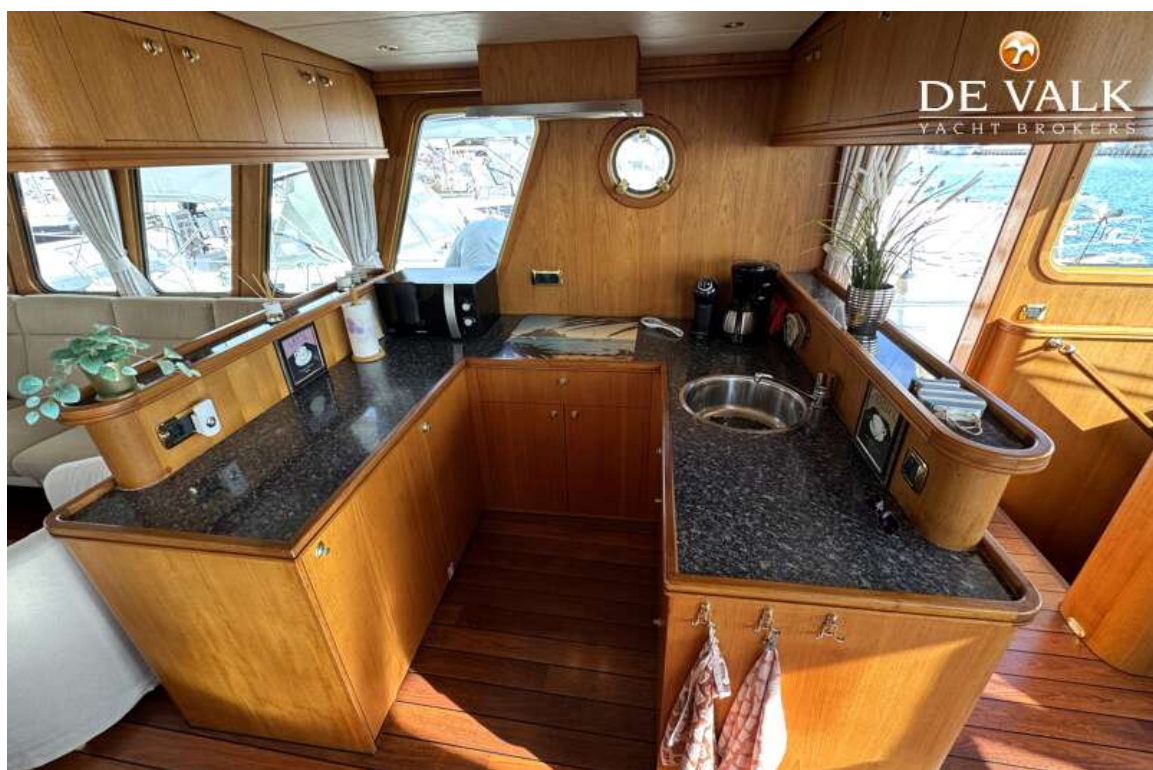
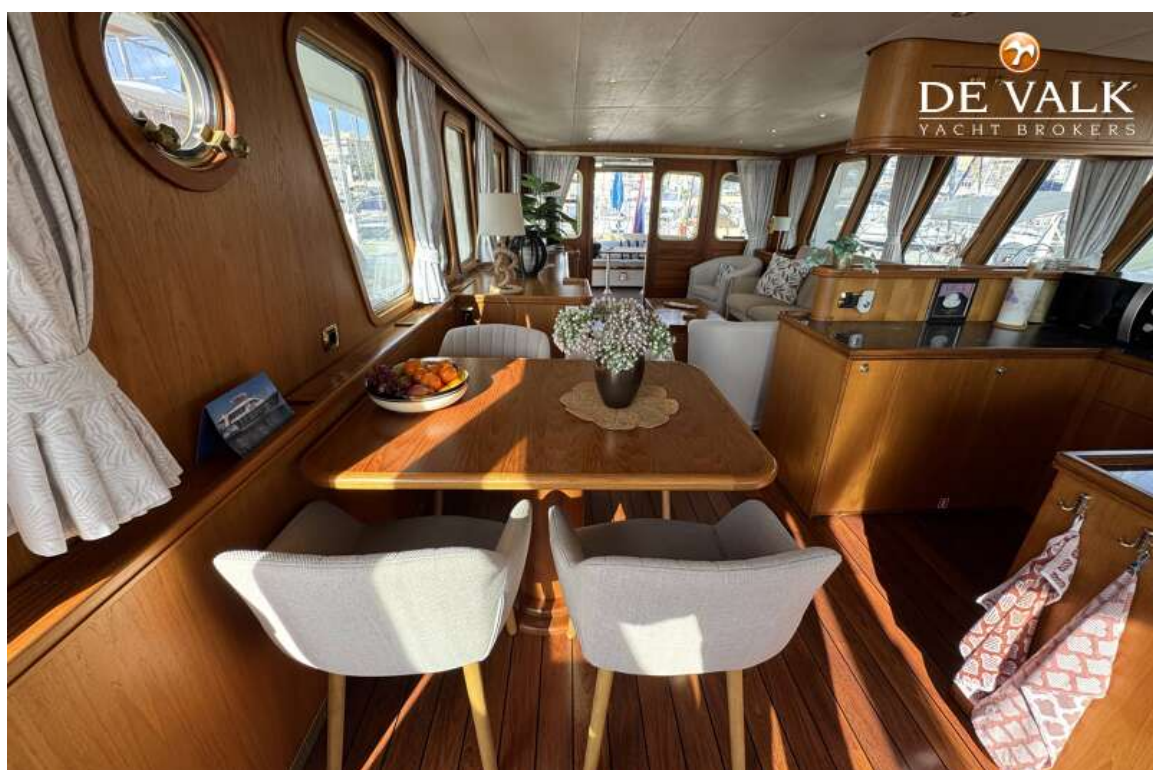


# EUROTRAWLER 1750

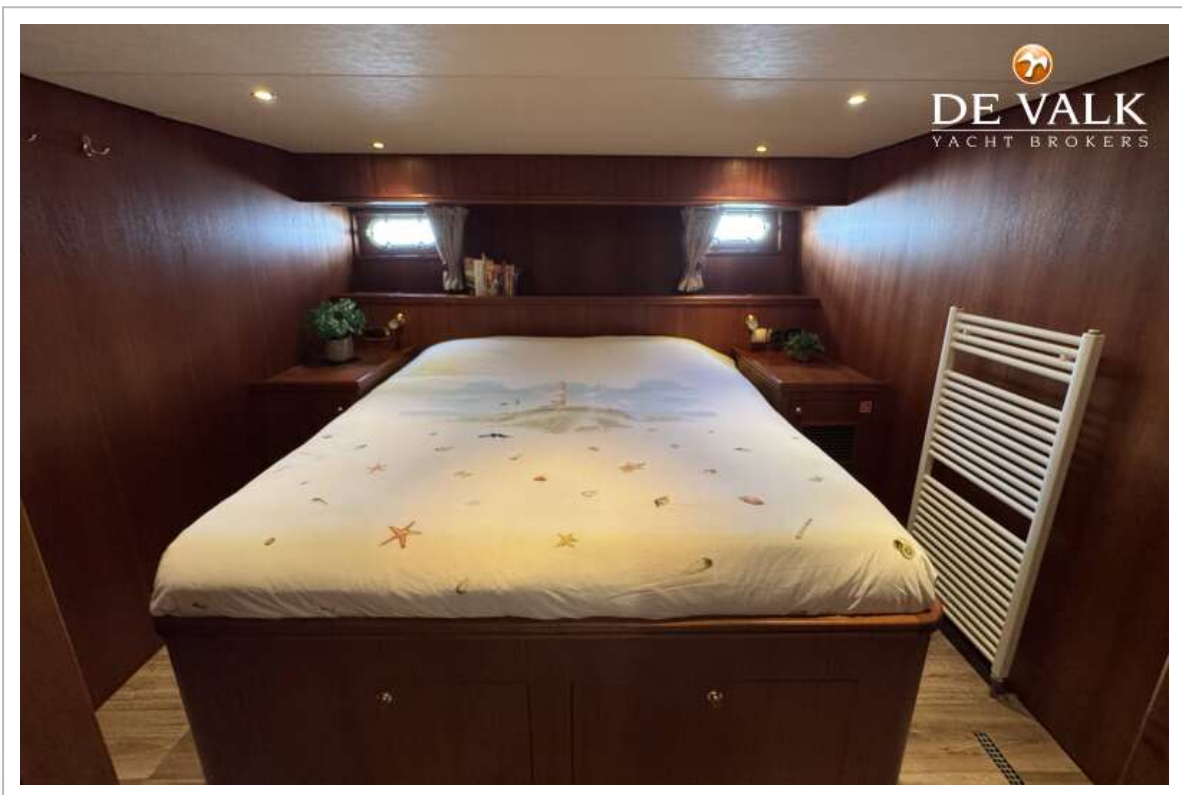




# EUROTRAWLER 1750



# EUROTRAWLER 1750



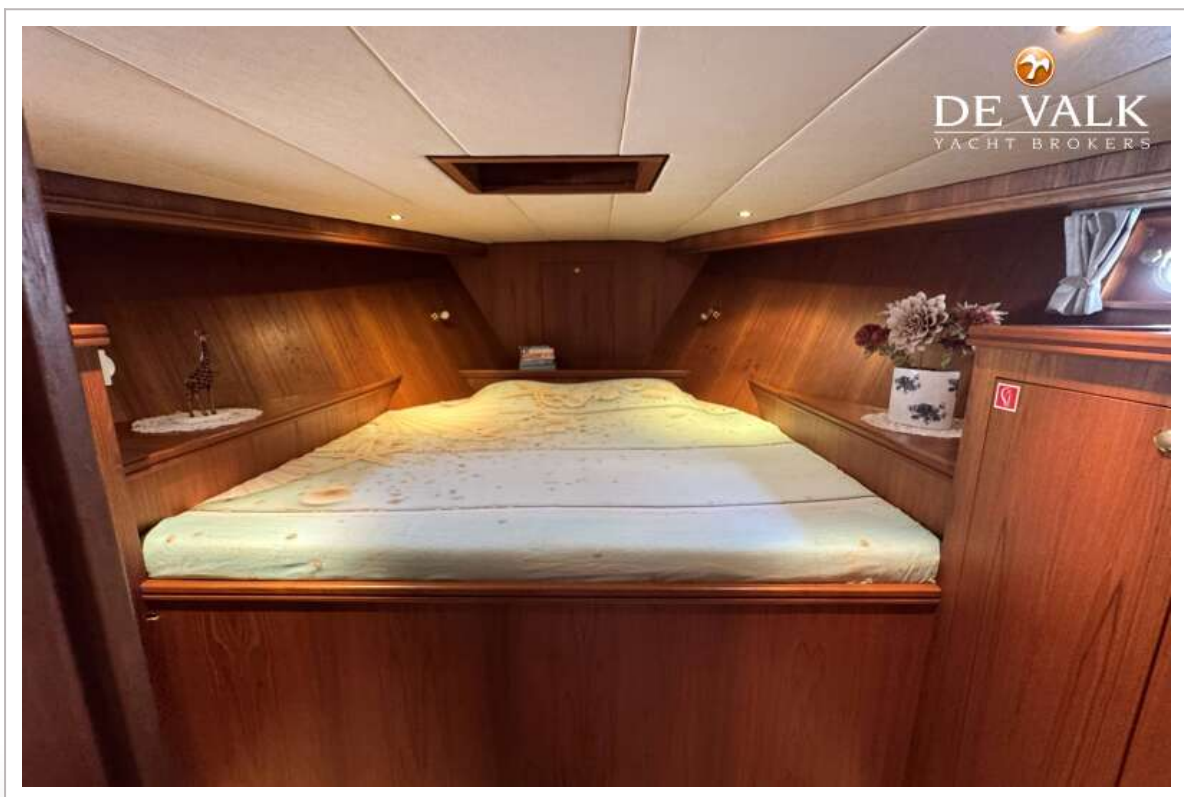


# EUROTRAWLER 1750

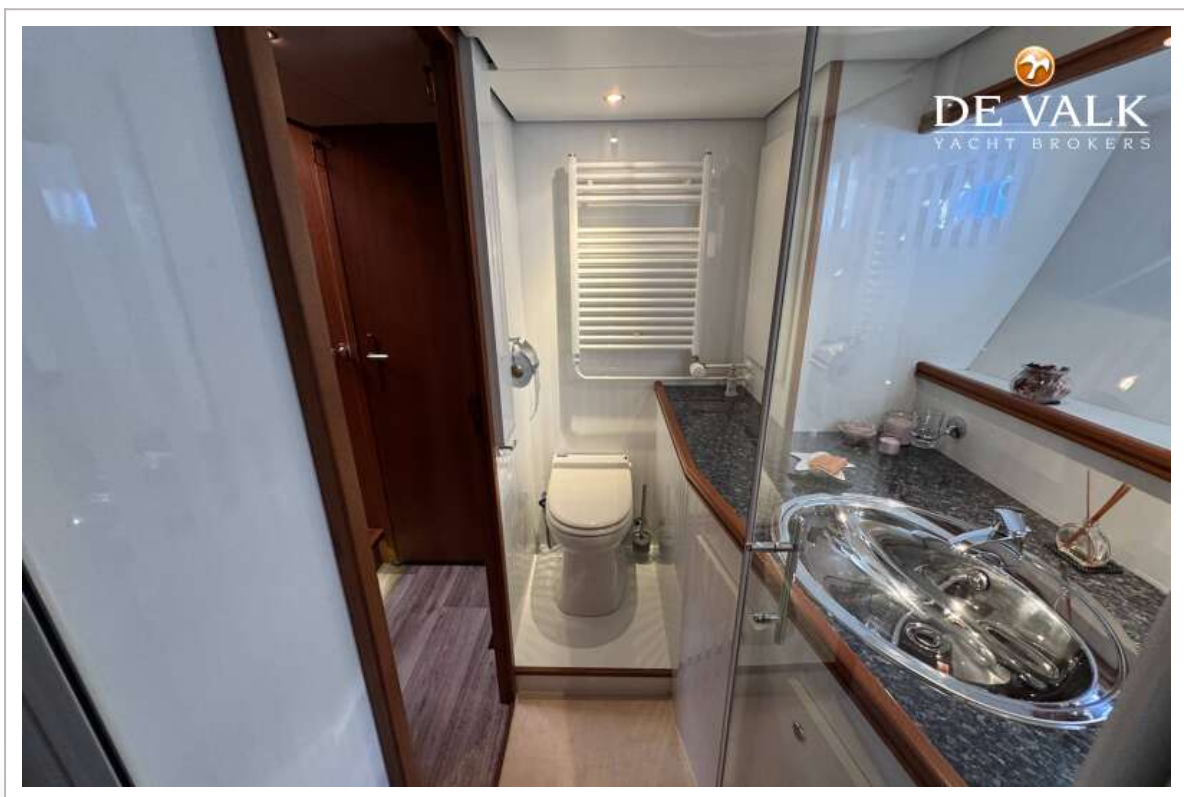




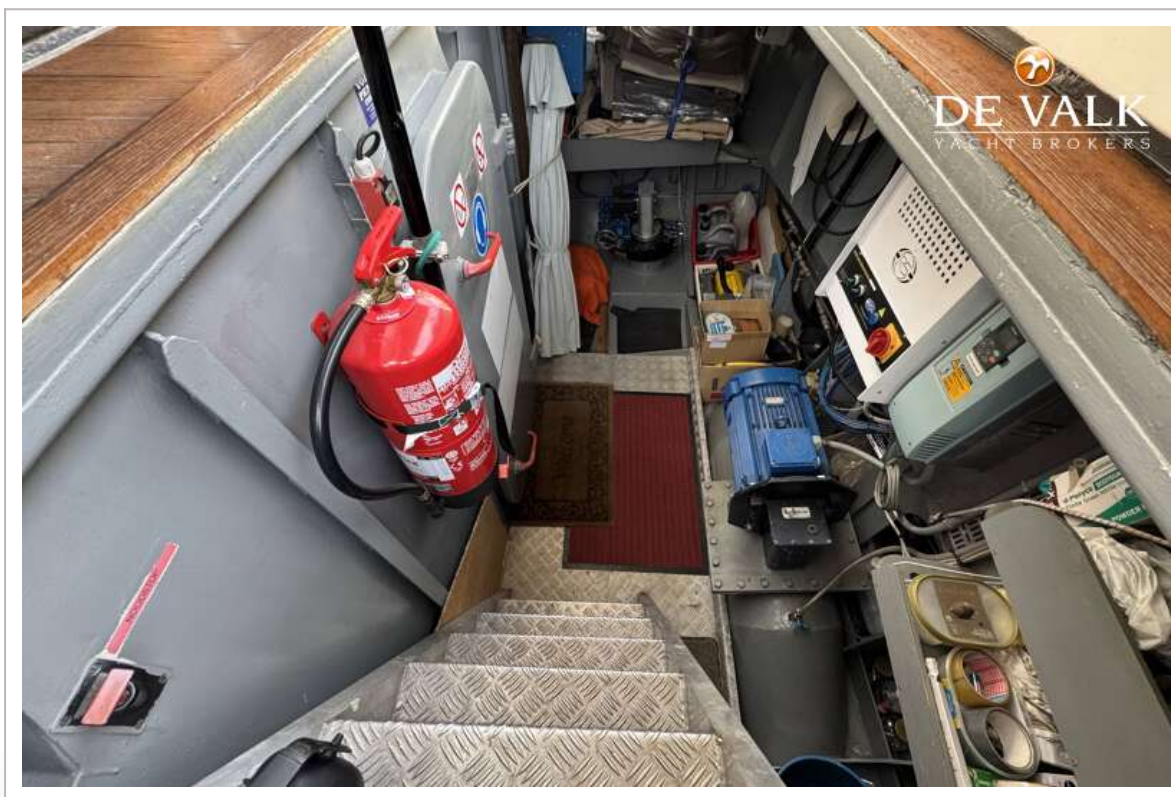
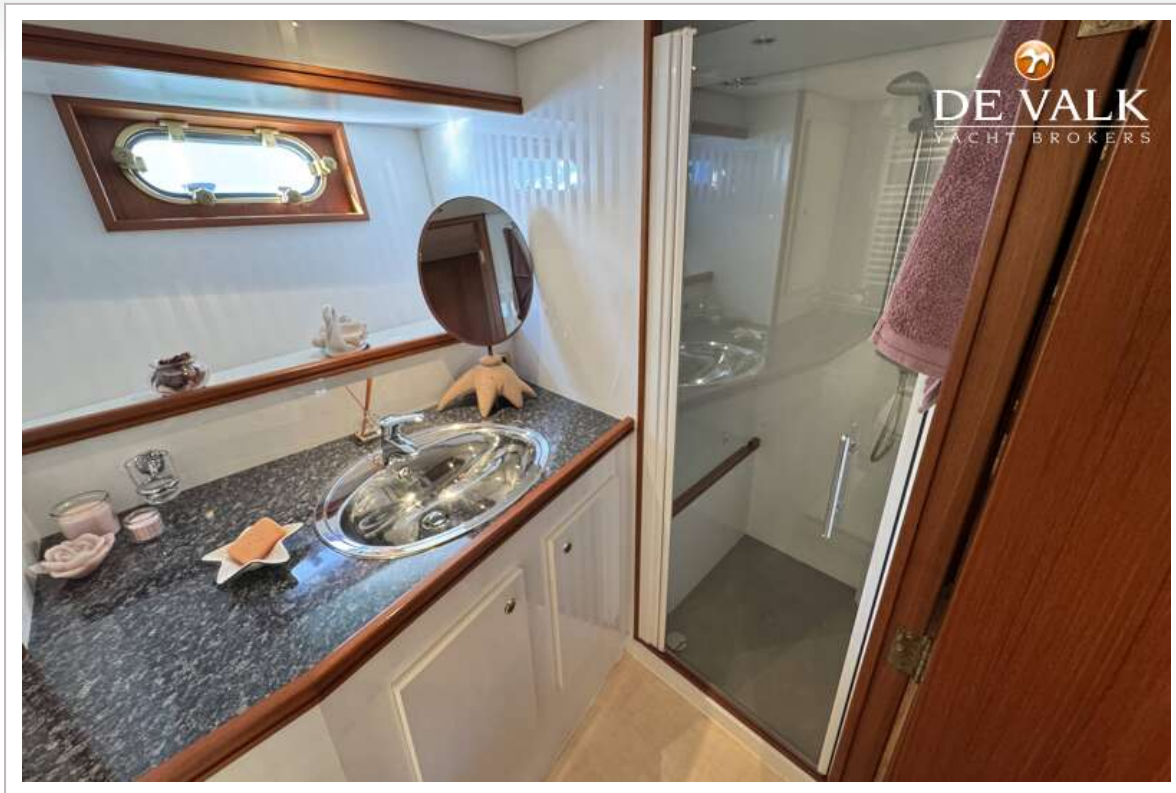
# EUROTRAWLER 1750



# EUROTRAWLER 1750









# EUROTRAWLER 1750

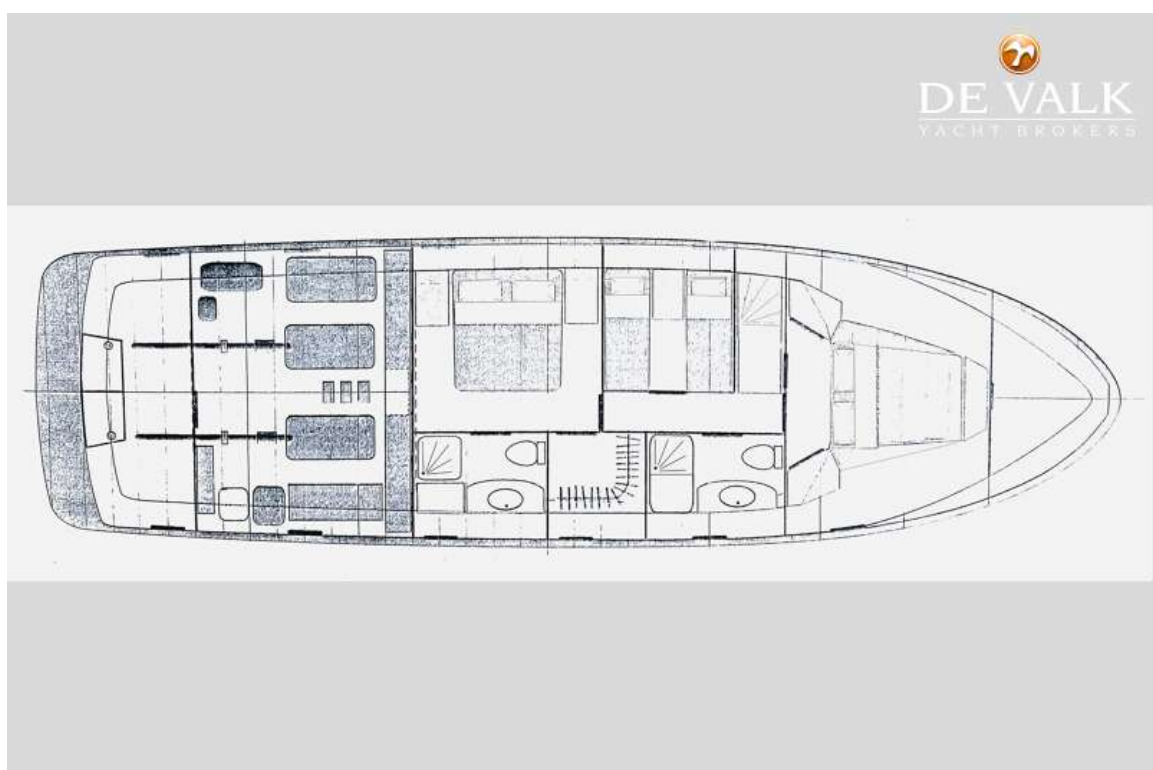




# EUROTRAWLER 1750



# EUROTRAWLER 1750





# EUROTRAWLER 1750

