



DE VALK

YACHT BROKERS



PRESIDENT 37



DE VALK
YACHT BROKERS

PRESIDENT 37

BROKER'S COMMENTS

President 37 "Themis", built in 1990. Equipped with two Cummins, type: 6 BTA 5.9 diesel engines and a Vetus bowthruster. Saloon with inside helm position, galley and dinette, two cabins and two bathrooms. Recently polished and new antifouling. Flybridge with cushions and a large aftdeck. Viewing is possible in our sales marina in Katwoude.

Arne Doodeman

SPECIFICATIONS

Dimensions	11.80 x 3.95 x 1.20 (m)	Builder	President Marine Ltd
Built	1990	Cabins	2
Material	GRP	Berths	8
Engine(s)	2 x Cummins 6 BTA 5.9 diesel	Hp/Kw	2 x 250.00 (hp), 184.00 (kw)
Asking price	€ 69.000 (VAT Paid)	Lying	contact Monnickendam

CONTACT

Sales office	De Valk Monnickendam B.V.	Telephone	+31 (0)299 65 63 50
Address	Hoogedijk 6 1145 PM Katwoude NL	E-mail	monnickendam@devalk.nl

DISCLAIMER

These particulars are given in good faith as supplied but cannot be guaranteed.



PRESIDENT 37

GENERAL

Model	PRESIDENT 37
Type	motor yacht
LOA (m)	11,80
Beam (m)	3,95
Draft (m)	1,20
Year built	1990
Builder	President Marine Ltd
Country	Taiwan
CE norm	NA
Hull material	GRP
Hull colour	white
Hull shape	deep-V
Superstructure material	GRP
Rubbing strake	plastic
Deck material	GRP
Deck finish	non-skid moulded in
Antifouling (year)	03-2026
Window frame	aluminium
Window material	tempered glass
Deckhatch	yes
Flybridge	yes
Radar arch	non collapsible
Fuel tank (litre)	Approx. 1100 litre (2 x 550L)
Level indicator (fuel tank)	VDO
Freshwater tank (litre)	Approx. 750 litre
Level indicator (freshwater)	VDO
Blackwater tank (litre)	yes
Wheel steering	hydraulic
Inside helm position	yes
Flybridge helm position	yes



ACCOMMODATION

Cabins	2
Berths	8
Interior	teak
Layout	V-berth in the front, bathroom (washbowl/toilet/handshower), dinette, galley, saloon with helmposition, owners cabin in the stern with private bathroom.
Floor	wood
Aft deck	With hardtop over the aft deck
Saloon	yes
Heating	3 x Thomas heating
Dinette	yes
Dinette to convert into berth	Convert into a single berth, Including cushion
Sliding door to aft deck	yes
Galley	yes
Countertop	yes
Sink	yes
Cooker	electric - Bauknecht
Extractor	Electrolux
Fridge	Coolmatic with freezing compartment
Water pressure system	electrical
Owners cabin	French bed
Wardrobe	hanging/drawers/shelves
Bathroom	en suite
Toilet	Jabsco
Toilet system	manual
Wash basin	yes
Shower	With out hose zonder slang
Guest cabin 1	v-bed
Wardrobe	yes
Bathroom	shared
Toilet	Jabsco



PRESIDENT 37

Toilet system	manual
Wash basin	yes
Shower	With out hose zonder slang

MACHINERY

No of engines	2
Make	Cummins
Type	6 BTA 5.9
HP	250
kW	184
Fuel	diesel
Engine cooling system	freshwater heat exchanger
Drive	shaft
Engine controls	bowden cable - Morse
Bowthruster	electric - Vetus
Propeller blades	4 bladed propeller
Propeller shaft material	stainless steel
Shaft lubrication	water
Electric bilge pump	yes
Generator	Westerbeke, not in a working condition
Start battery	yes
Service battery	yes
Battery charger	Victron Blue Smart
Inverter	Enrise Sineinverter 12V/2500w
Shorepower	with cable
Trimtabs	Bennett trimtabs (the trimtabs are working, the led indication lights do not work)
Extra info	Racor fuel filter

NAVIGATION

Compass	Konus marine compass (liquid compass)
---------	---------------------------------------



Depth sounder	Incastec (not in working condition)
Log	Incastec (not in working condition)
VHF	Shipmate RS8300
VHF handheld	Standard Horizon HX210
Radar	Furuno
Plotter/GPS	Raytheon RC420 chartplotter

EQUIPMENT

Fixed hardtop	Over the aft deck
Bathing platform	yes
Boarding ladder	yes
Transom door	yes
Deck shower	yes
Anchor	Stainless steel anchor
Anchor chain	yes
Windlass	electrical
Sea railing	stainless steel
Grab rail (superstructure)	stainless steel
Railing side opening gates	yes
Wiper	yes
Horn	yes
Fenders	yes
Mooring lines	yes
Radio-cd player	Sony
Clock - barometer	Schatz clock, barometer and hygrometer



PRESIDENT 37



PRESIDENT 37



PRESIDENT 37



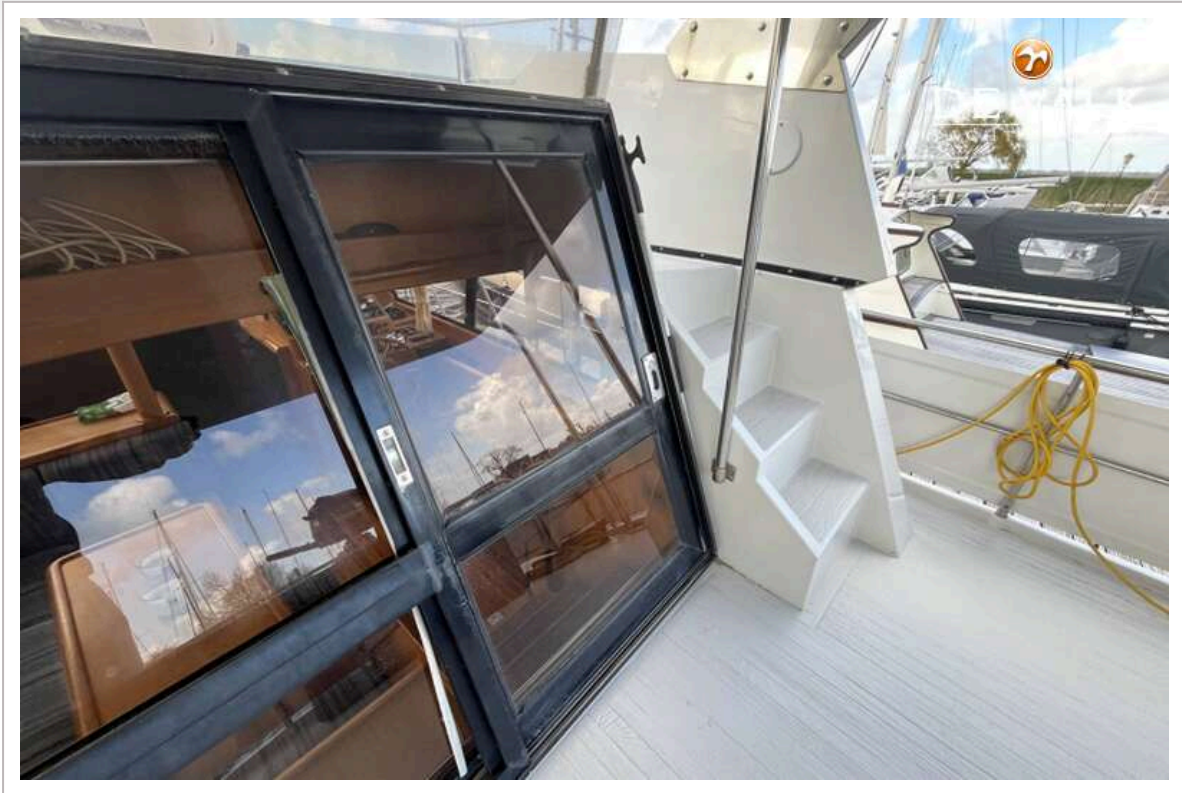
PRESIDENT 37



PRESIDENT 37



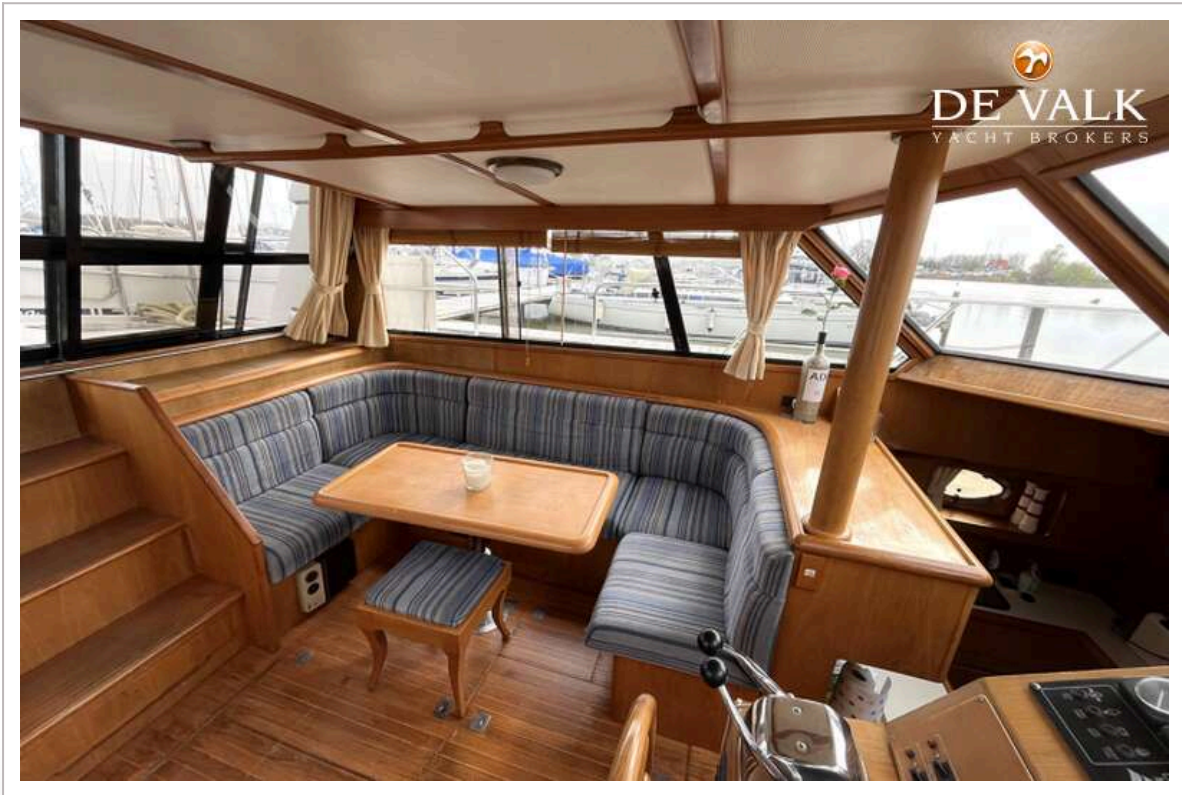
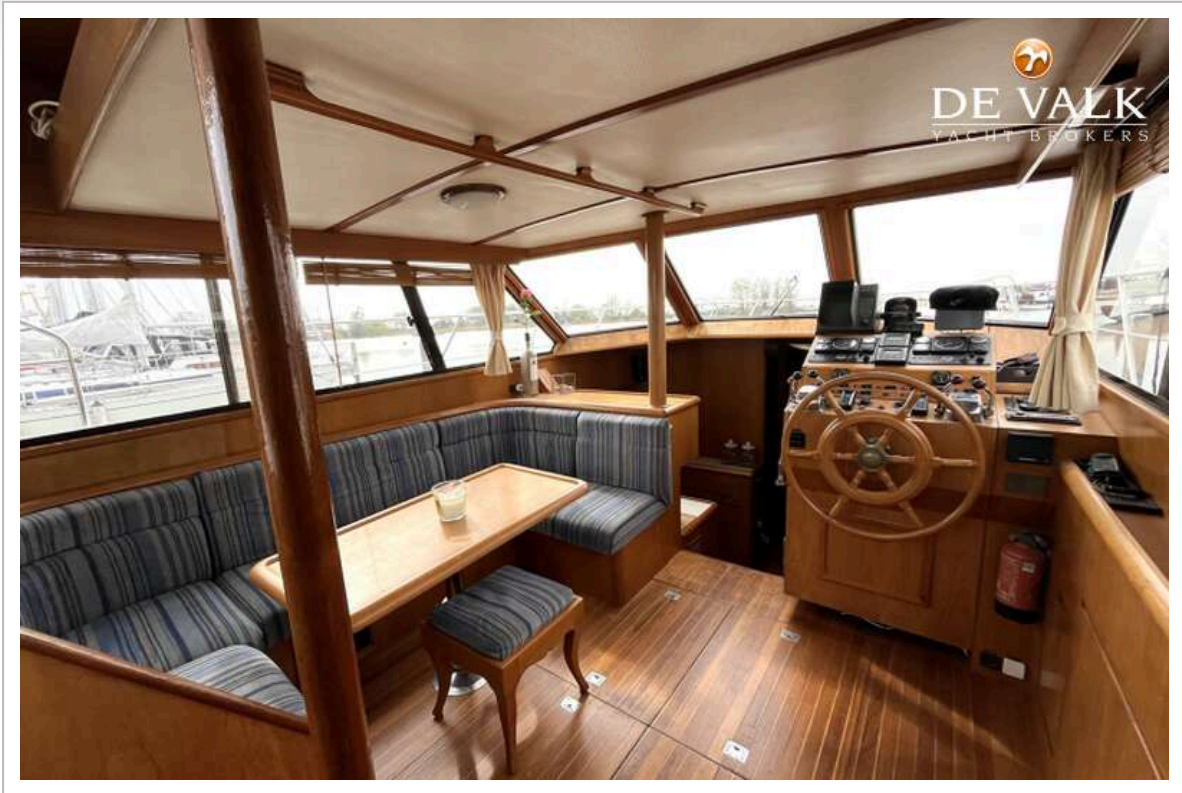
PRESIDENT 37



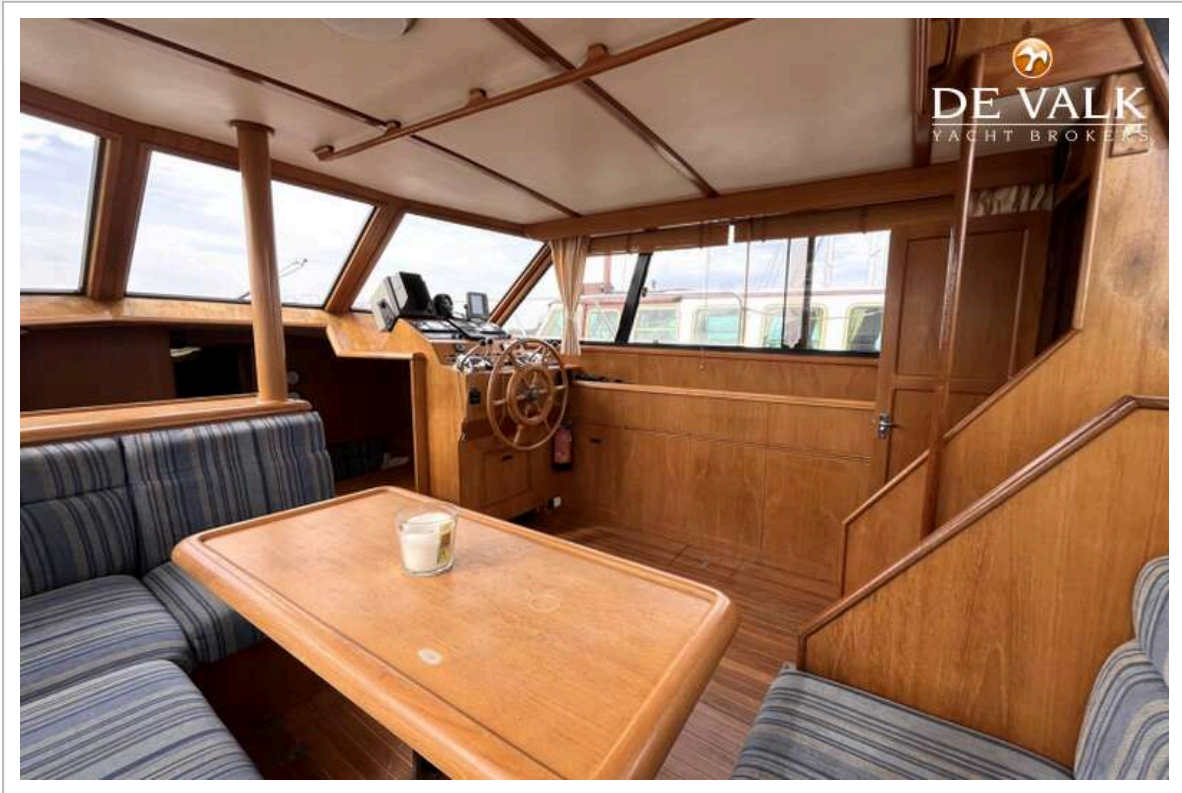
PRESIDENT 37



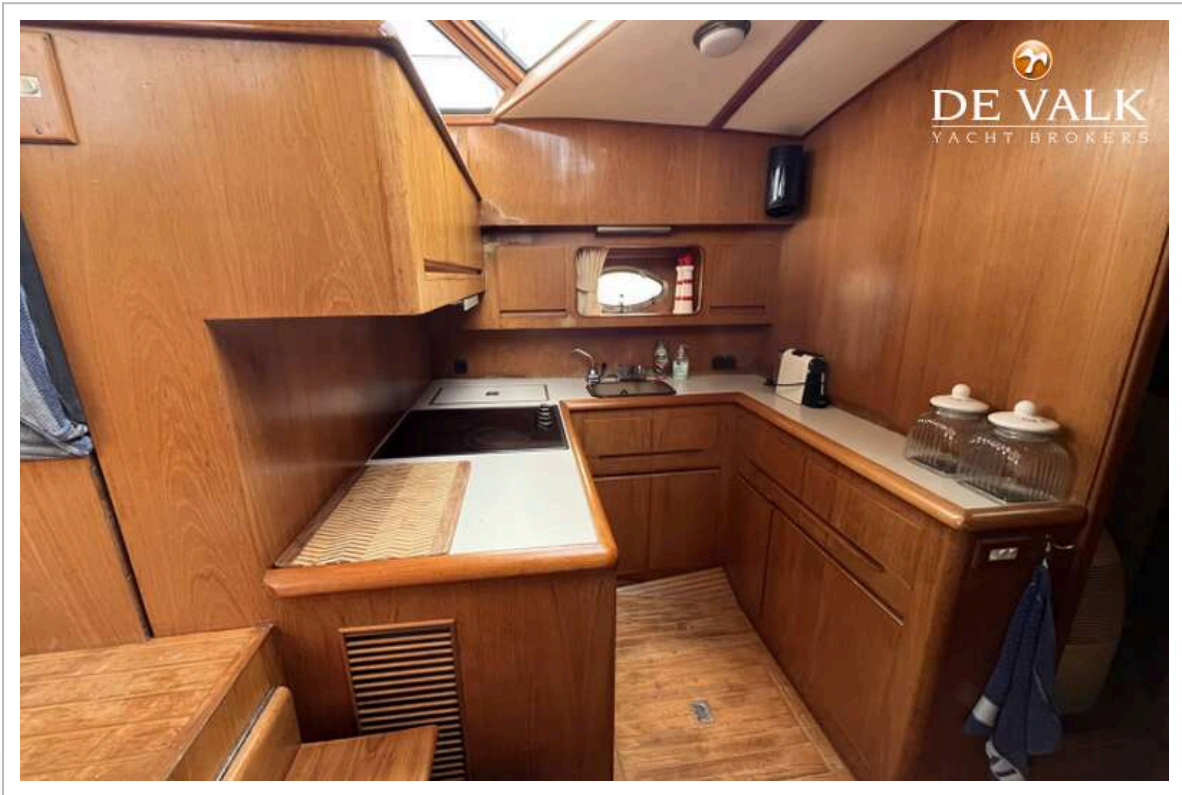
PRESIDENT 37



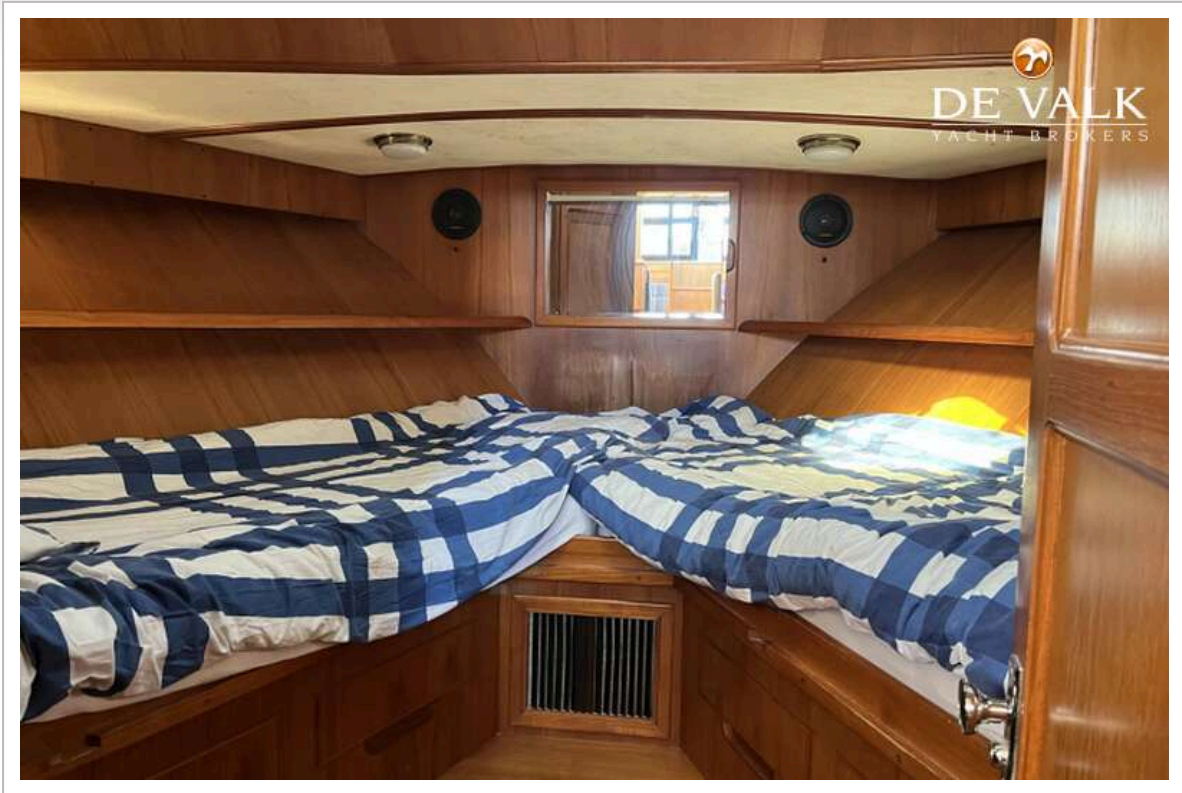
PRESIDENT 37



PRESIDENT 37



PRESIDENT 37



PRESIDENT 37



PRESIDENT 37

