



DE VALK  
YACHT BROKERS



HANSE 460



DE VALK  
YACHT BROKERS

# HANSE 460

## BROKER'S COMMENTS

Discover this immaculate, as-new Hanse 460. this is a rare "turn-key" opportunity for discerning buyers seeking a virtually new vessel without the wait time of a new build. Delivered new in 2023 and meticulously maintained by a professional captain from day one, this yacht presents in flawless condition.

*Nico Stillitano*

## SPECIFICATIONS

<b>Dimensions</b>	14.60 x 4.79 x 2.25 (m)	<b>Builder</b>	2023
<b>Built</b>	2023	<b>Cabins</b>	5
<b>Material</b>	GRP	<b>Berths</b>	12
<b>Engine(s)</b>	1 x YANMAR 4JH80 diesel	<b>Hp/Kw</b>	59.00 (hp), 43.42 (kw)
<b>Asking price</b>	€ 340.000 (VAT Not paid)	<b>Lying</b>	Italy

## CONTACT

<b>Sales office</b>	De Valk Rome	<b>Telephone</b>	+39 06 65 81221
<b>Address</b>	c/o Nautilus Marina Srl, Via Monte Cadria, 127  00054 Fiumicino Roma  IT	<b>E-mail</b>	rome@devalk.nl

## DISCLAIMER

These particulars are given in good faith as supplied but cannot be guaranteed.



## GENERAL

<b>Model</b>	HANSE 460
<b>Type</b>	sailing yacht
<b>LOA (m)</b>	14,60
<b>LWL (m)</b>	13,05
<b>Beam (m)</b>	4,79
<b>Draft (m)</b>	2,25
<b>Year built</b>	2023
<b>Builder</b>	2023
<b>Country</b>	Germany
<b>Designer</b>	Berret - Racoupeau
<b>Displacement (t)</b>	12,60
<b>CE norm</b>	A
<b>Hull material</b>	GRP
<b>Hull colour</b>	white
<b>Hull shape</b>	full bilged
<b>Keel type</b>	bulb keel
<b>Superstructure material</b>	GRP
<b>Deck material</b>	GRP
<b>Deck finish</b>	non-skid moulded in
<b>Superstructure deck finish</b>	non-skid moulded in
<b>Cockpit deck finish</b>	teak
<b>Antifouling (year)</b>	2025
<b>Window material</b>	yes
<b>Mast can be lowered</b>	manual
<b>Fuel tank (litre)</b>	polyethylene 200
<b>Freshwater tank (litre)</b>	polyethylene 550
<b>Blackwater tank (litre)</b>	polyethylene 25
<b>Blackwater tank extraction</b>	deck extraction
<b>Wheel steering</b>	DOUBLE COMPOSITE WHEEL
<b>Inside helm position</b>	yes



Emergency tiller YES

## ACCOMMODATION

<b>Cabins</b>	5
<b>Berths</b>	12
<b>Interior</b>	teak
<b>Floor</b>	teak and holly
<b>Saloon</b>	Saloon table electrically lowerable with cushions, convertible into double berth
<b>Aft Cabin</b>	2 fwd cabins with double berth, storage space and separate heads
<b>Dinette to convert into berth</b>	yes
<b>Convertible berth</b>	Electrically table
<b>Cooker</b>	yes
<b>Oven</b>	yes
<b>Fridge</b>	yes
<b>Hot water system</b>	yes
<b>Manual and/or foot pump</b>	yes
<b>Bathroom</b>	en suite
<b>Toilet system</b>	manual
<b>Shower</b>	en suite
<b>Guest cabin 1</b>	bunk bed
<b>Guest cabin 2</b>	double bed
<b>Bathroom</b>	separate
<b>Toilet</b>	separate
<b>Toilet system</b>	manual
<b>Shower</b>	separate
<b>Guest cabin 3</b>	double bed

## MACHINERY

No of engines 1



<b>Make</b>	YANMAR
<b>Type</b>	4JH80
<b>HP</b>	59
<b>kW</b>	43.42
<b>Fuel</b>	diesel
<b>Year installed</b>	2023
<b>Engine cooling system</b>	seawater
<b>Drive</b>	sail-drive
<b>Engine controls</b>	yes
<b>Bowthruster</b>	electric
<b>Propeller type</b>	feathering
<b>Manual bilge pump</b>	yes
<b>Electric bilge pump</b>	yes
<b>Batteries</b>	5
<b>Start battery</b>	90 Ah
<b>Service battery</b>	160 Ah
<b>Bowthruster battery</b>	yes
<b>Battery charger</b>	mastervolt
<b>Solar panel</b>	2 Solbian

## NAVIGATION

<b>Compass</b>	Precision 9
<b>Multi control display</b>	B&G Triton
<b>Log</b>	yes
<b>VHF</b>	B&G V60
<b>VHF handheld</b>	B&G
<b>Autopilot</b>	B&G
<b>GPS</b>	yes
<b>Plotter/GPS</b>	B&G Zeus S 9"
<b>Navigation lights</b>	yes



## EQUIPMENT

Sprayhood	yes
Bimini	yes
Cockpit cushions	yes
Cockpit table	1 electrically lowerable into sunbed incl. upholstery 1 fixed 1 electrically
Bathing platform	automatic fold-out remote control
Gangway	yes
Deck shower	yes
Anchor	Delta
Anchor chain	yes
Chain counter	yes
Windlass	electrical
Outboard support	yes
Railing side opening gates	yes
Pushpit	yes
Pulpit	yes
Radar reflector	yes
Fenders	yes
Mooring lines	yes
Radio	yes
Cockpit speakers	yes

## RIGGING

Rigging	sloop
Standing rigging	wire
Brand mast	Seldén
Material mast	aluminium
Spreaders	2
Mainsail	Quantum
Stoway mast	yes



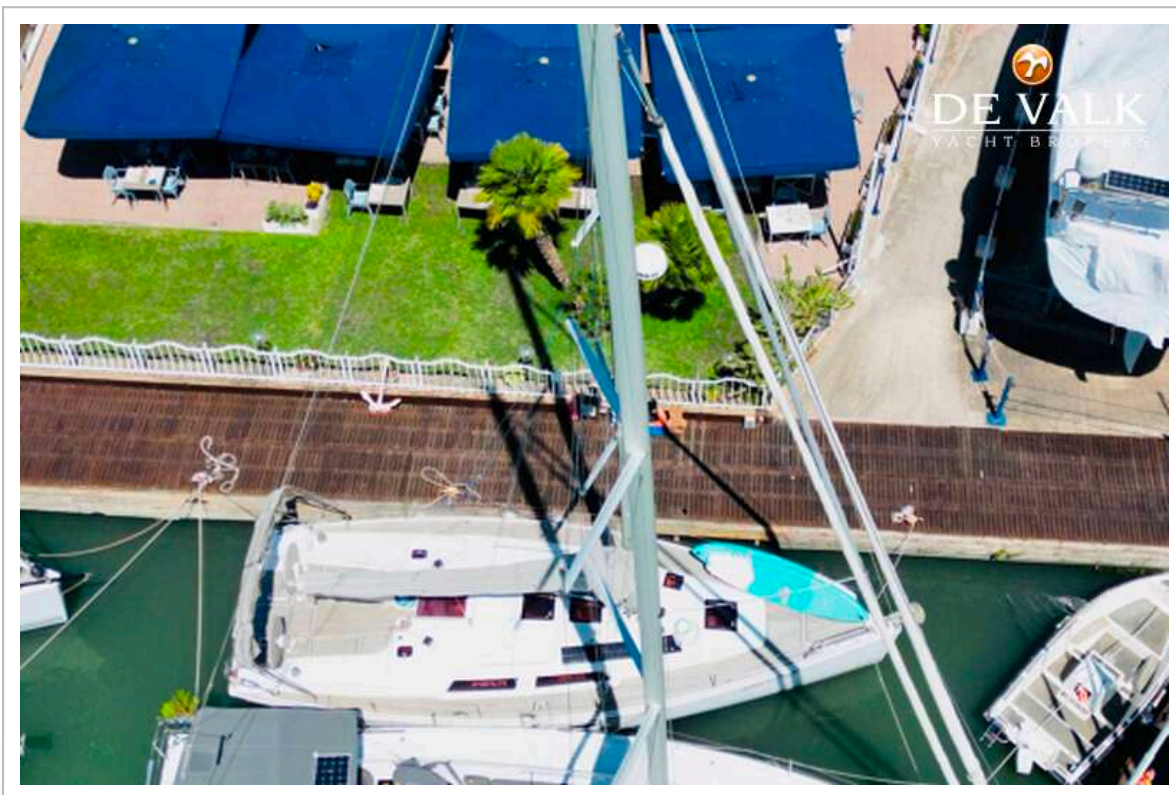
<b>Jib</b>	manual Jib furler Quantum
<b>Genoa III</b>	Reacher 145% Quantum
<b>Genoa furler</b>	manual furler
<b>Backstay adjuster</b>	mechanical
<b>Boomvang</b>	gasspring
<b>Primary sheet winch</b>	2 Lewmar 45 ST EVO
<b>Secondary sheet winch</b>	2 Lewmar



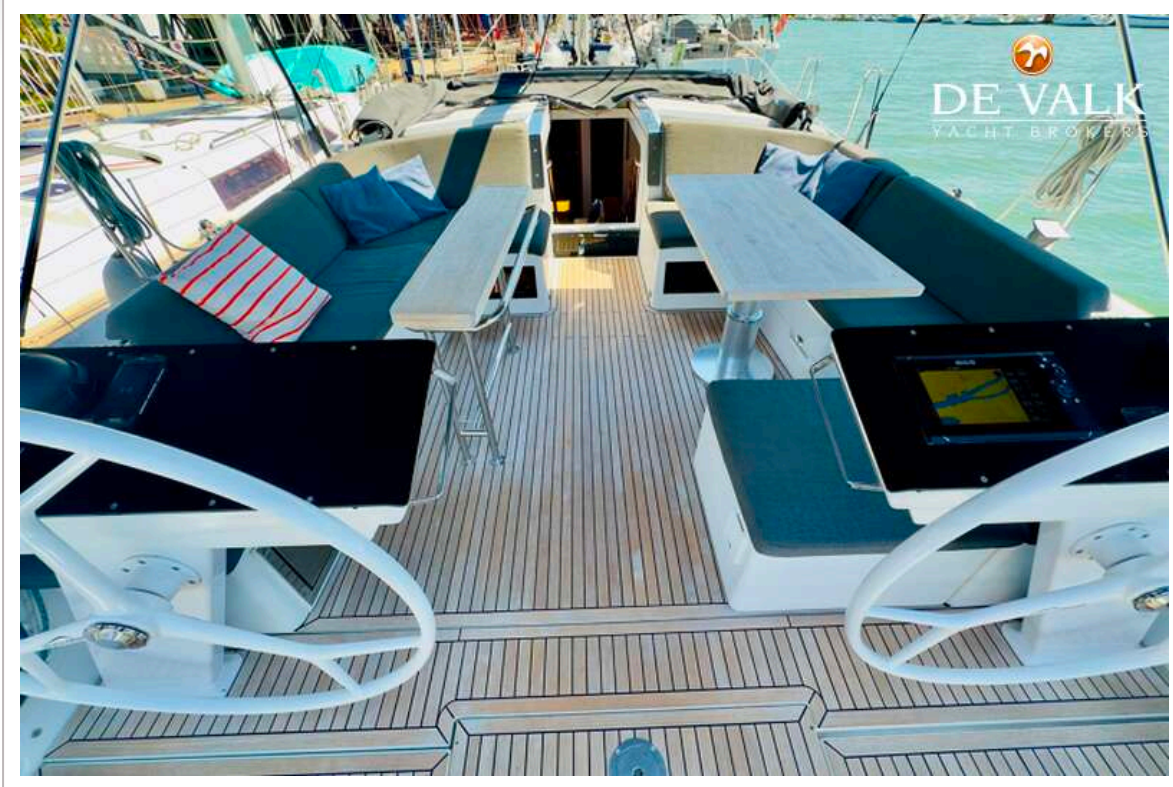
# HANSE 460



# HANSE 460



# HANSE 460



# HANSE 460



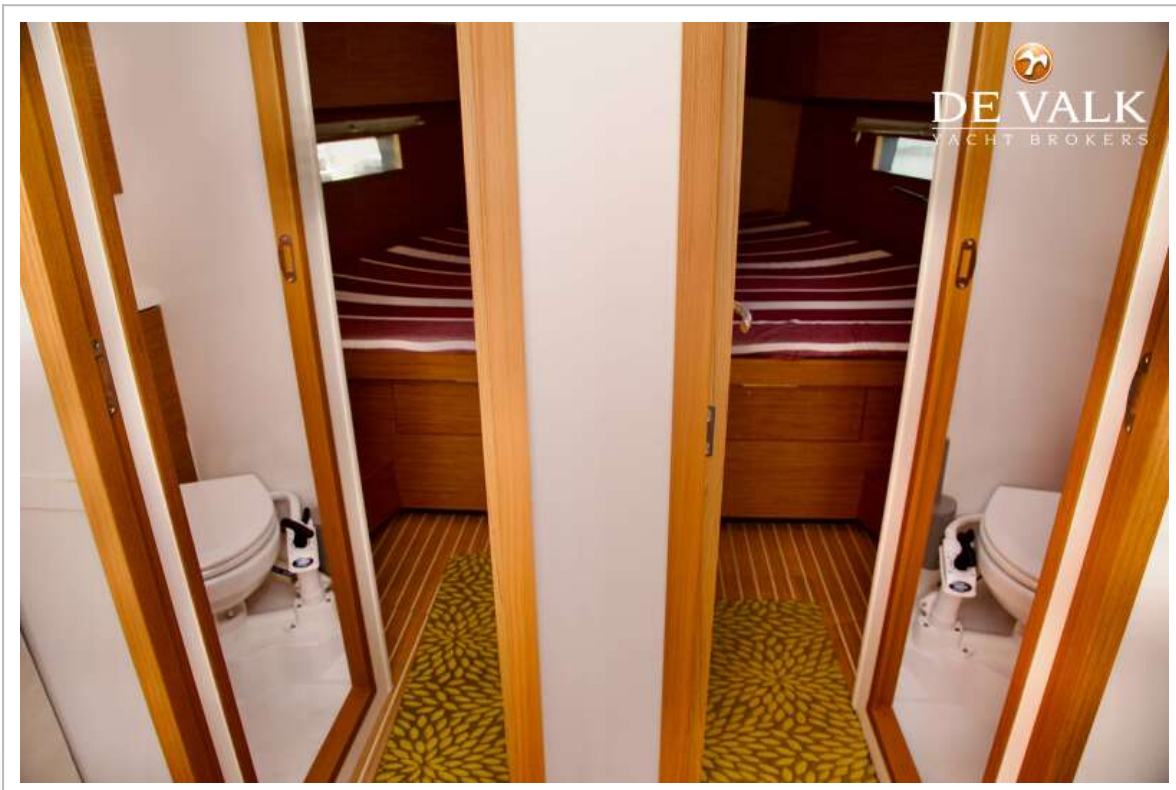
# HANSE 460



# HANSE 460



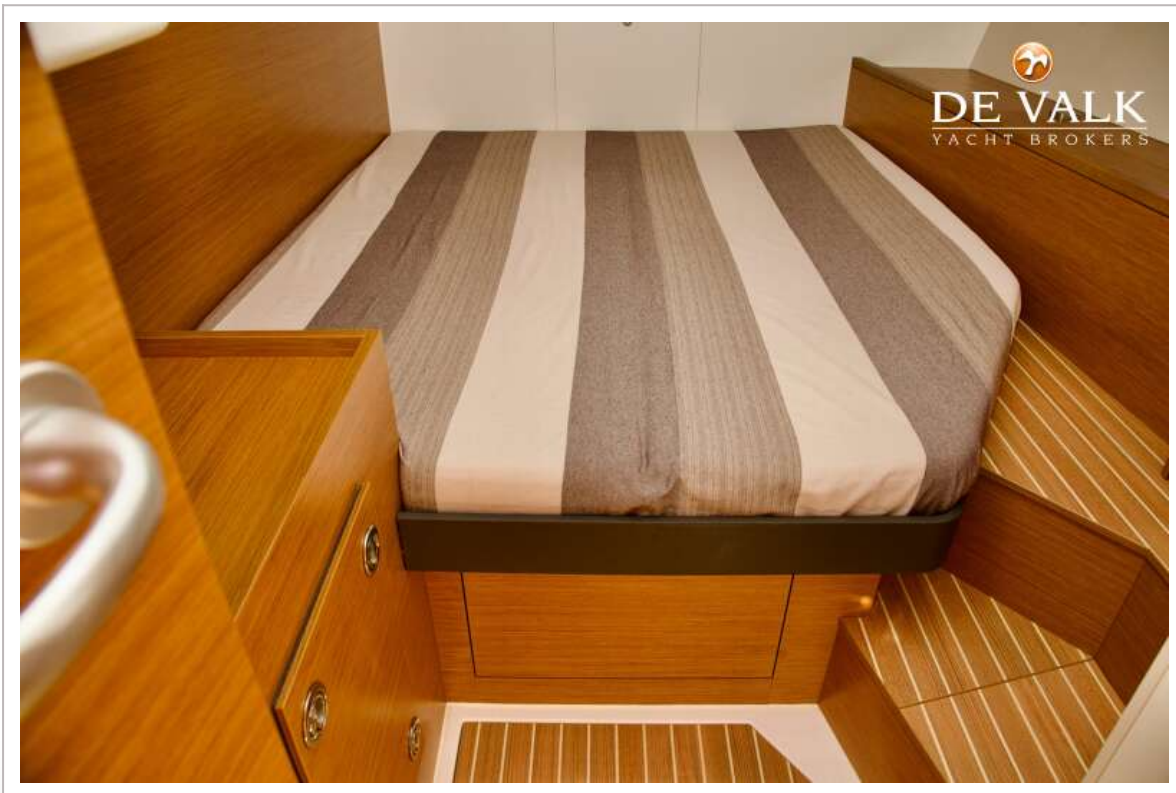
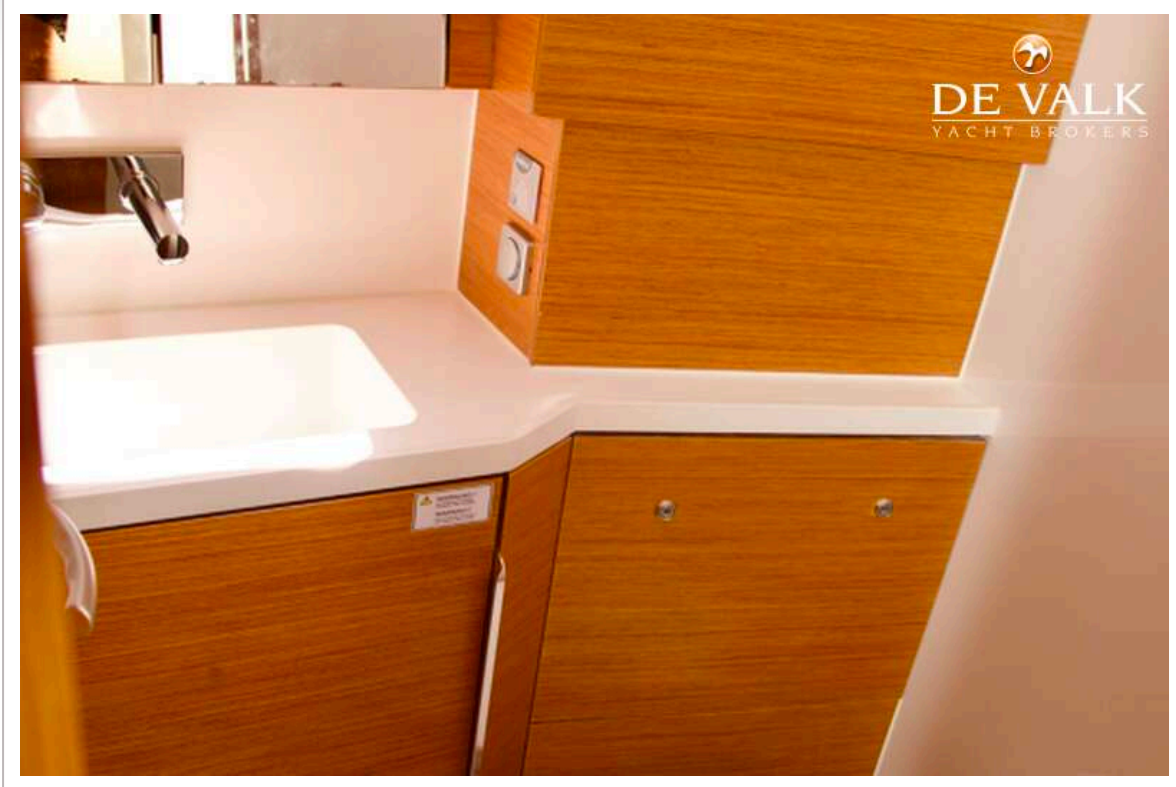
# HANSE 460



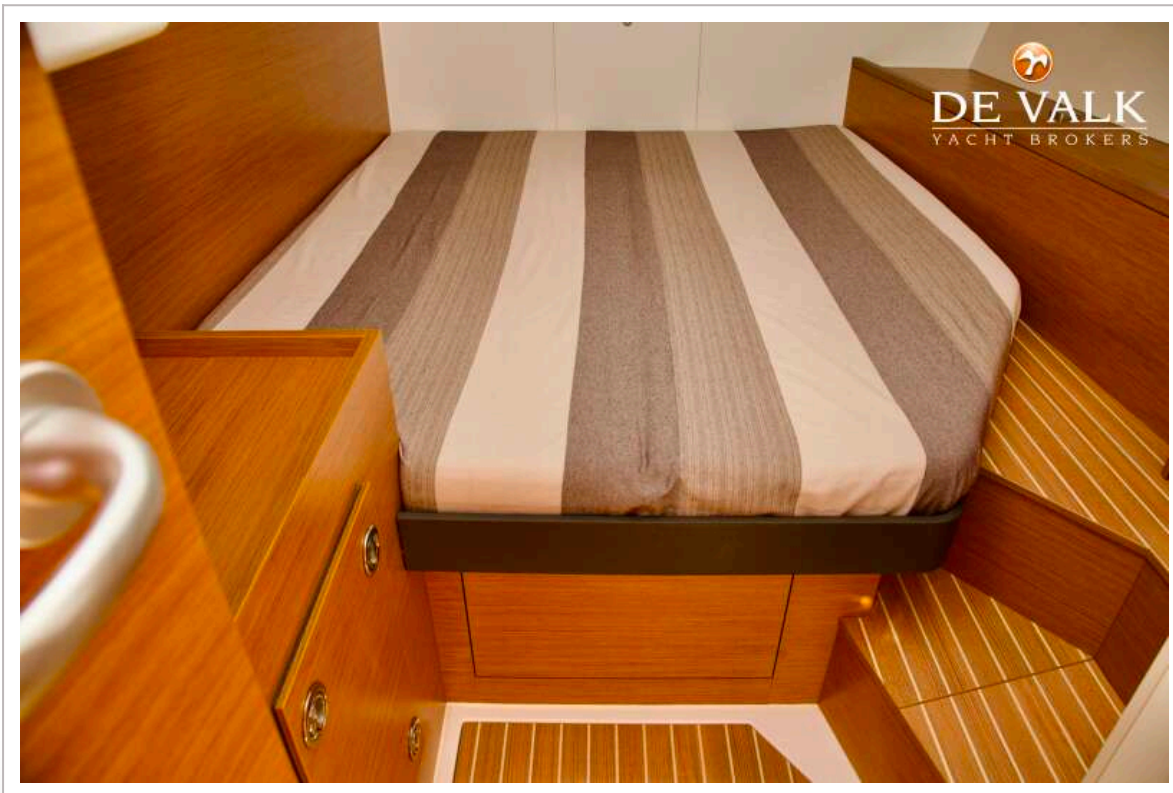
# HANSE 460



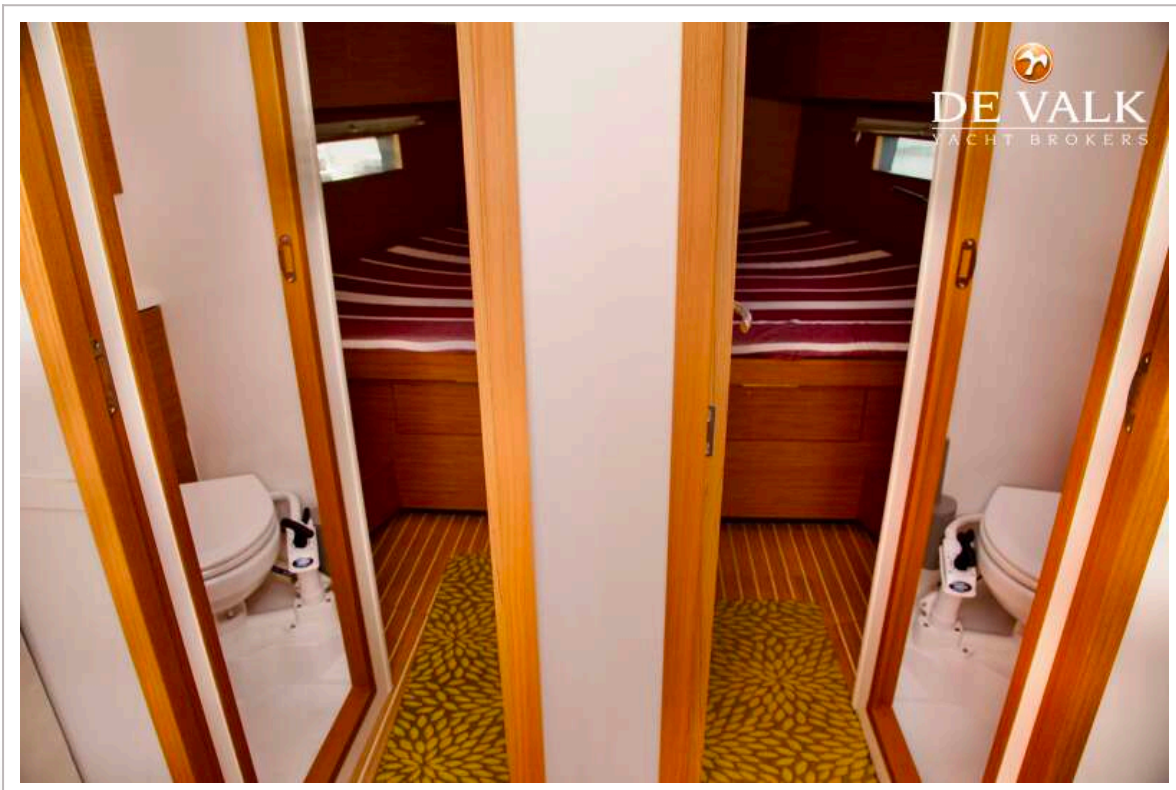
# HANSE 460



# HANSE 460



# HANSE 460



# HANSE 460

