



DE VALK
YACHT BROKERS



BENETEAU OCEANIS 38



DE VALK
YACHT BROKERS

BENETEAU OCEANIS 38

BROKER'S COMMENTS

Bénéteau Océanis 38 offers agile marine performance, propelled by the force of the wind, making it an ideal choice for relaxed coastal cruising and offshore adventures. With its versatile design, exceptional comfort and ease of maneuvering, the Bénéteau Océanis 38 is an invitation to explore the oceans in style.

Sofia Iliia-Salvanou

SPECIFICATIONS

Dimensions	11.13 x 3.99 x 1.78 (m)	Builder	BENETEAU SPBI SA
Built	2016	Cabins	3
Material	GRP	Berths	8
Engine(s)	1 x YANMAR 3YM30AE SD diesel	Hp/Kw	30.00 (hp), 22.08 (kw)
Asking price	€ 122.000 (VAT Paid)	Lying	elsewhere / Not at sales office

CONTACT

Sales office	De Valk Corfu	Telephone	(+30) 266 111 8095
Address	New Port of Corfu, near Gouvia Marina 490 83 Corfu GR	E-mail	corfu@devalk.nl

DISCLAIMER

These particulars are given in good faith as supplied but cannot be guaranteed.



BENETEAU OCEANIS 38

GENERAL

Model	BENETEAU OCEANIS 38
Type	sailing yacht
LOA (m)	11,13
Beam (m)	3,99
Draft (m)	1,78
Year built	2016
Builder	BENETEAU SPBI SA
Country	France
Designer	Finot-Conq Architects
Hull material	GRP
Hull colour	white
Deck material	GRP
Deck finish	non-skid moulded in
Superstructure deck finish	non-skid moulded in
Cockpit deck finish	teak
Antifouling (year)	2024
Deckhatch	yes
Portholes	yes
Fuel tank (litre)	130
Freshwater tank (litre)	330
Blackwater tank (litre)	yes
Wheel steering	X 2
Outside helm position	yes
Emergency tiller	yes

ACCOMMODATION

Cabins	3
Berths	8
Layout	3 CABINS , 1 Head with separate shower cabin
Saloon	yes



Navigation center	yes
Chart table	yes
Dinette	yes
Dinette to convert into berth	yes
Sliding door to cockpit	yes
Galley	yes
Countertop	yes
Sink	yes
Cooker	yes
Oven	yes
Fridge	yes
Hot water system	yes
Water pressure system	yes
Crockery	yes
Owners cabin	double bed
Wardrobe	yes
Bathroom	separate
Toilet	separate
Toilet system	manual
Wash basin	at the toilet
Shower	separate
Guest cabin 1	double bed
Wardrobe	yes
Bathroom	separate
Toilet	separate
Toilet system	manual
Wash basin	at the toilet
Shower	separate
Guest cabin 2	double bed
Wardrobe	yes
Bathroom	separate
Toilet	separate



Toilet system	manual
Wash basin	at the toilet
Shower	separate

MACHINERY

No of engines	1
Make	YANMAR
Type	3YM30AE SD
HP	30
kW	22.08
Fuel	diesel
Engine cooling system	freshwater heat exchanger
Drive	sail-drive
Propeller type	fixed
Electric bilge pump	yes
Batteries	2024
Start battery	yes
Service battery	yes
Battery monitor	yes
Battery charger	yes
Inverter	yes
Solar panel	yes
Shorepower	with cable

NAVIGATION

Compass	yes
Depth sounder	yes
VHF	yes
Autopilot	yes
Plotter/GPS	yes
EPIRB	yes



Navigation lights yes

EQUIPMENT

Sprayhood	2024
Sprayhood with grab rail	yes
Bimini	yes
Cockpit cushions	yes
Cockpit table	yes
Bathing platform	yes
Gangway	yes
Deck shower	yes
Anchor	yes
Anchor chain	yes
Windlass	yes
Deck wash	yes
Dinghy	yes
Outboard	yes
Sea railing	yes
Life raft	yes
Lifejackets	Automatic
Safety harness	yes
Lifebuoy	yes
Fenders	yes
Mooring lines	yes
Radio-cd player	yes
Cockpit speakers	yes
Fire extinguisher	yes

RIGGING

Rigging	yes
Standing rigging	yes



Material mast	aluminium
Spreaders	yes
Mainsail	2024, Furling
Genoa	2024, Furling
Halyard winches	yes
Multifunctional winches	yes



BENETEAU OCEANIS 38



BENETEAU OCEANIS 38



BENETEAU OCEANIS 38

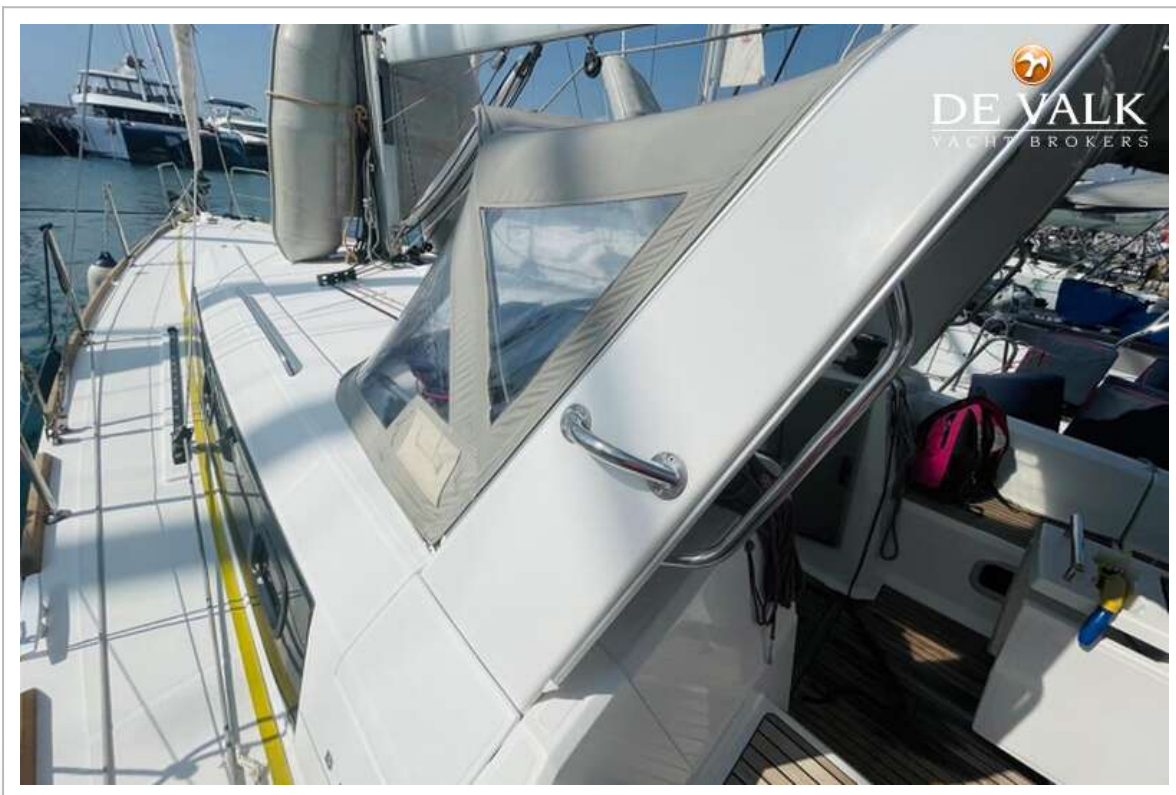


BENETEAU OCEANIS 38

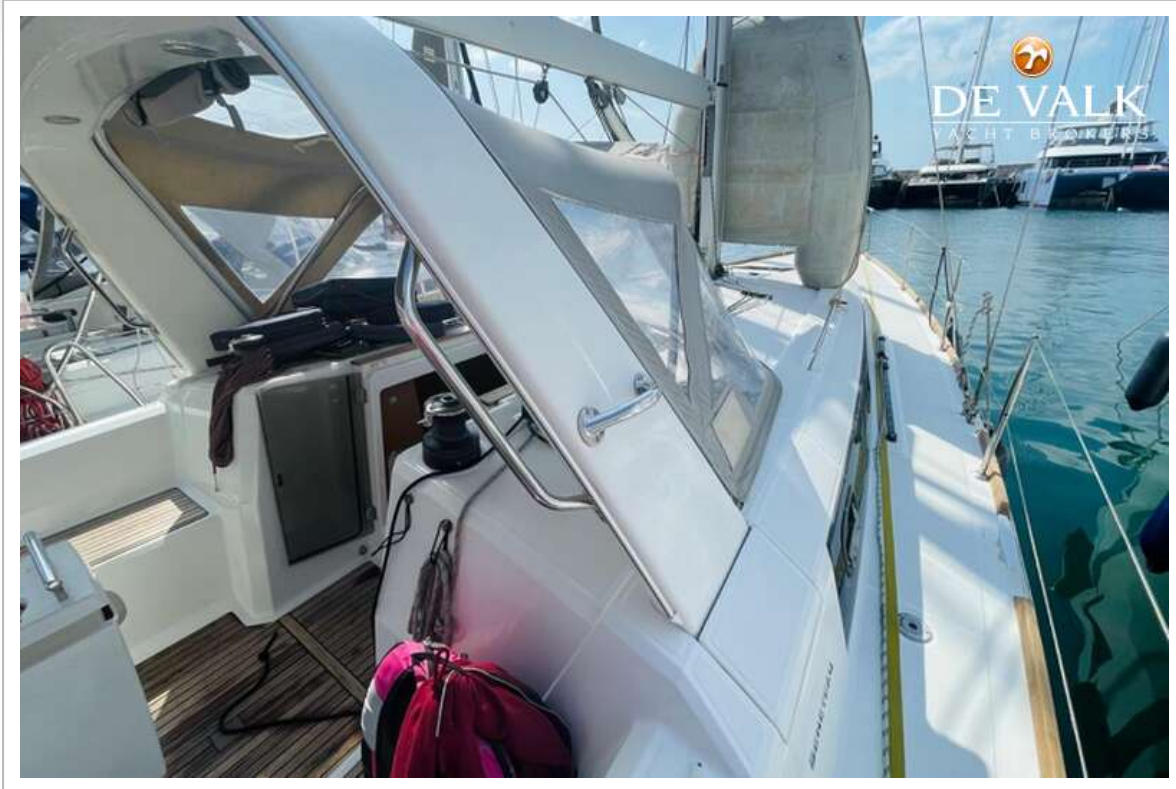




BENETEAU OCEANIS 38



BENETEAU OCEANIS 38



BENETEAU OCEANIS 38



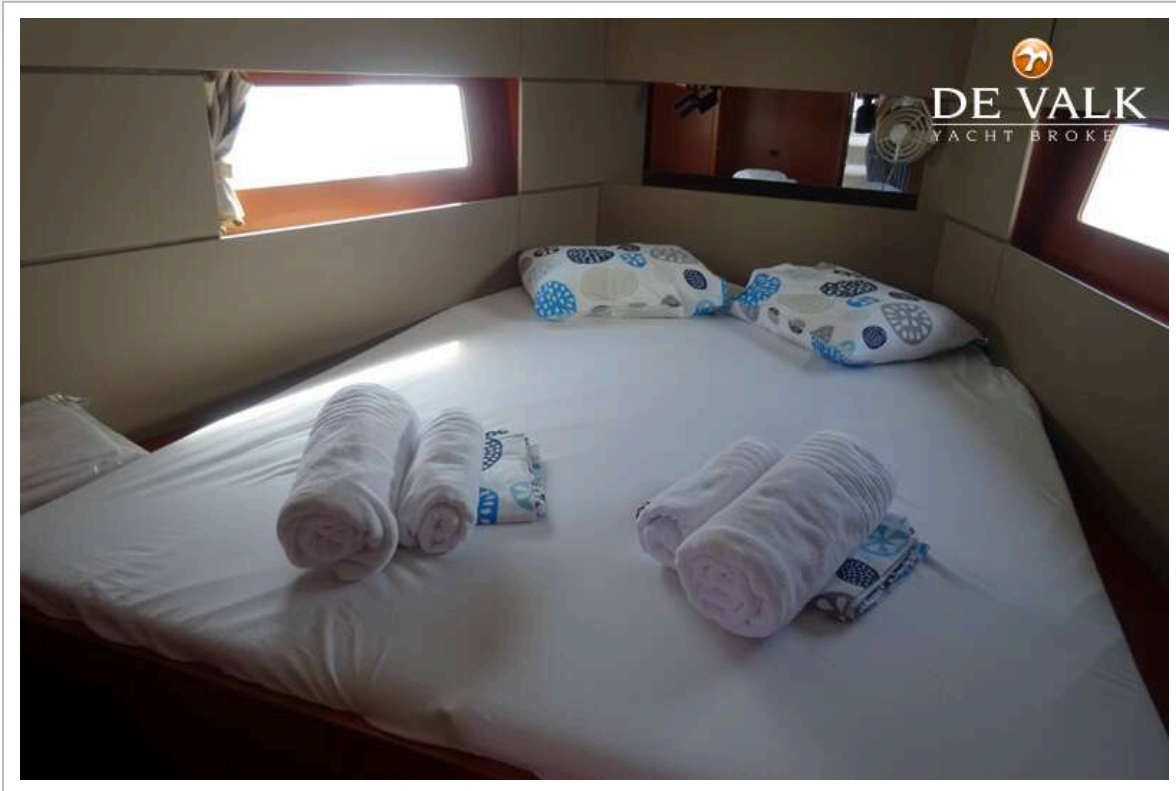
BENETEAU OCEANIS 38



BENETEAU OCEANIS 38



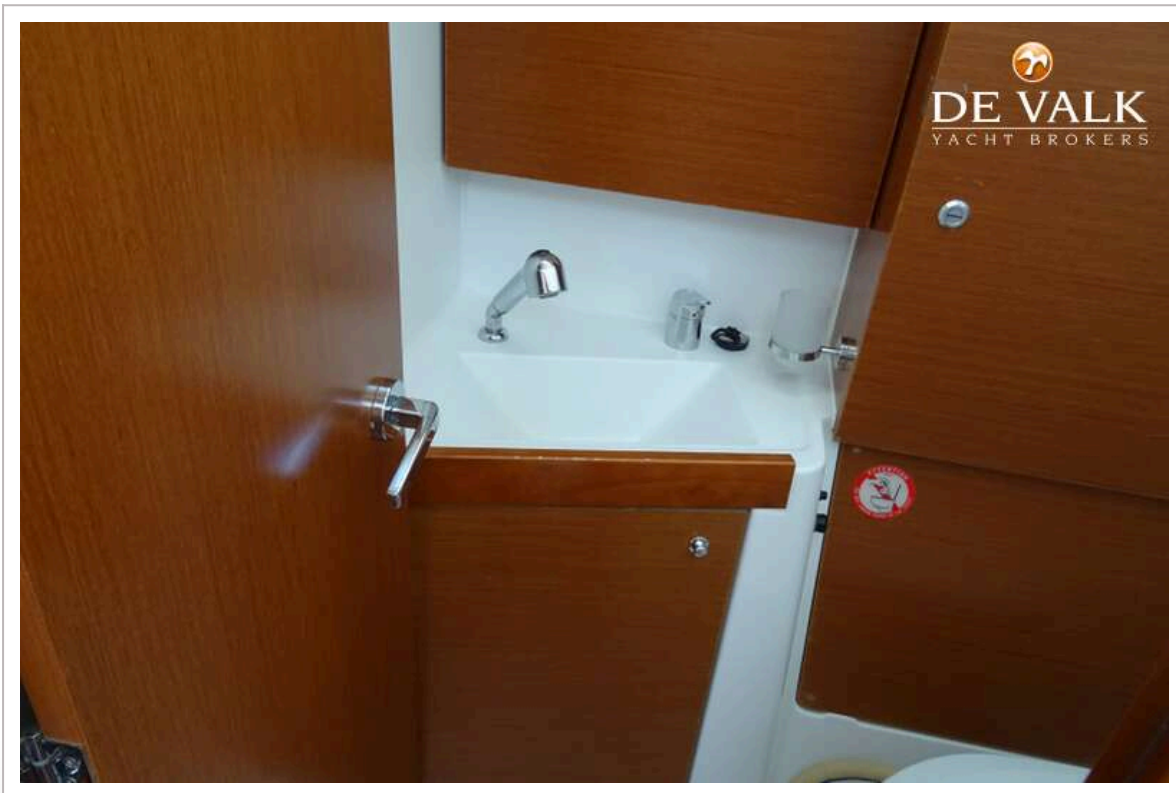
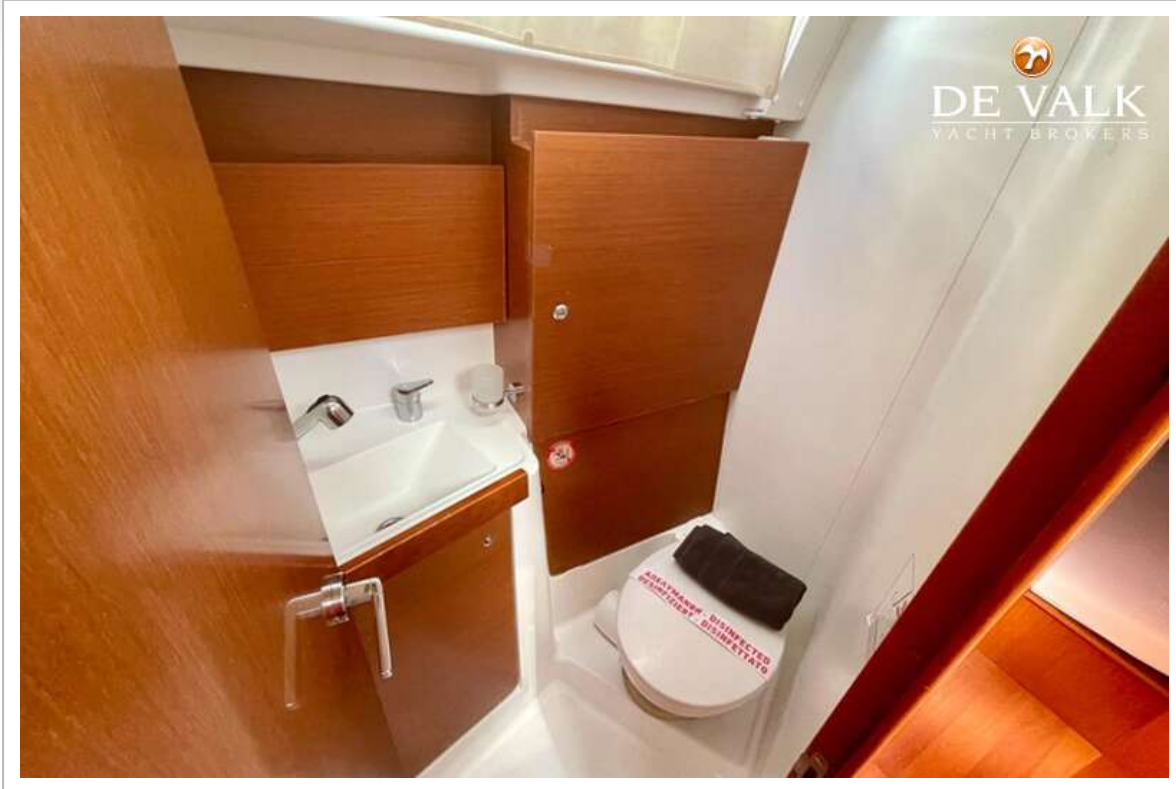
BENETEAU OCEANIS 38



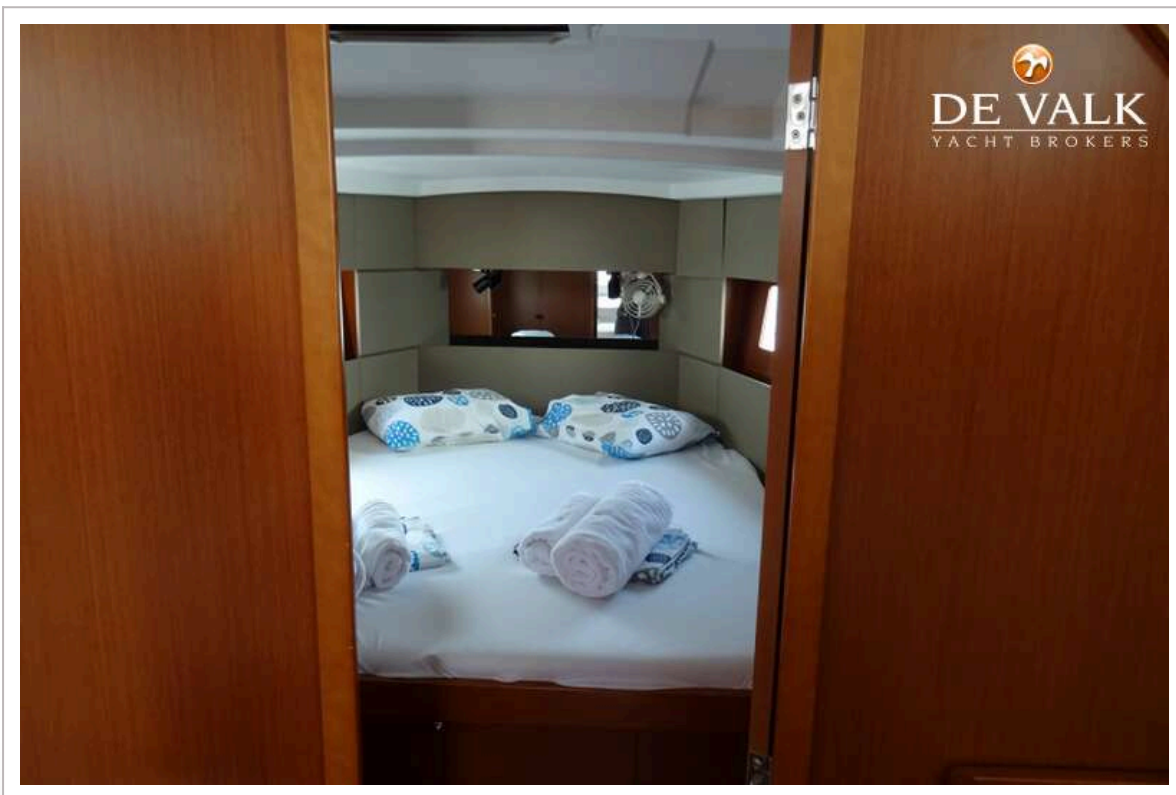
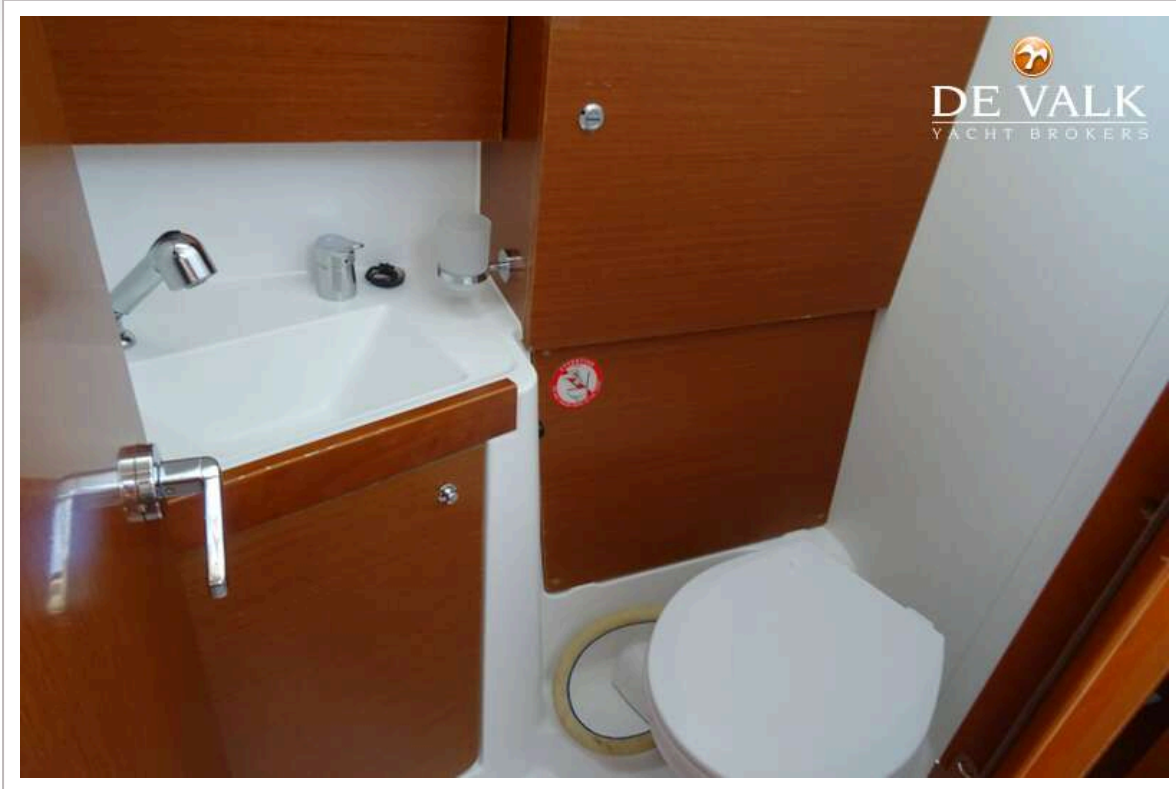
BENETEAU OCEANIS 38



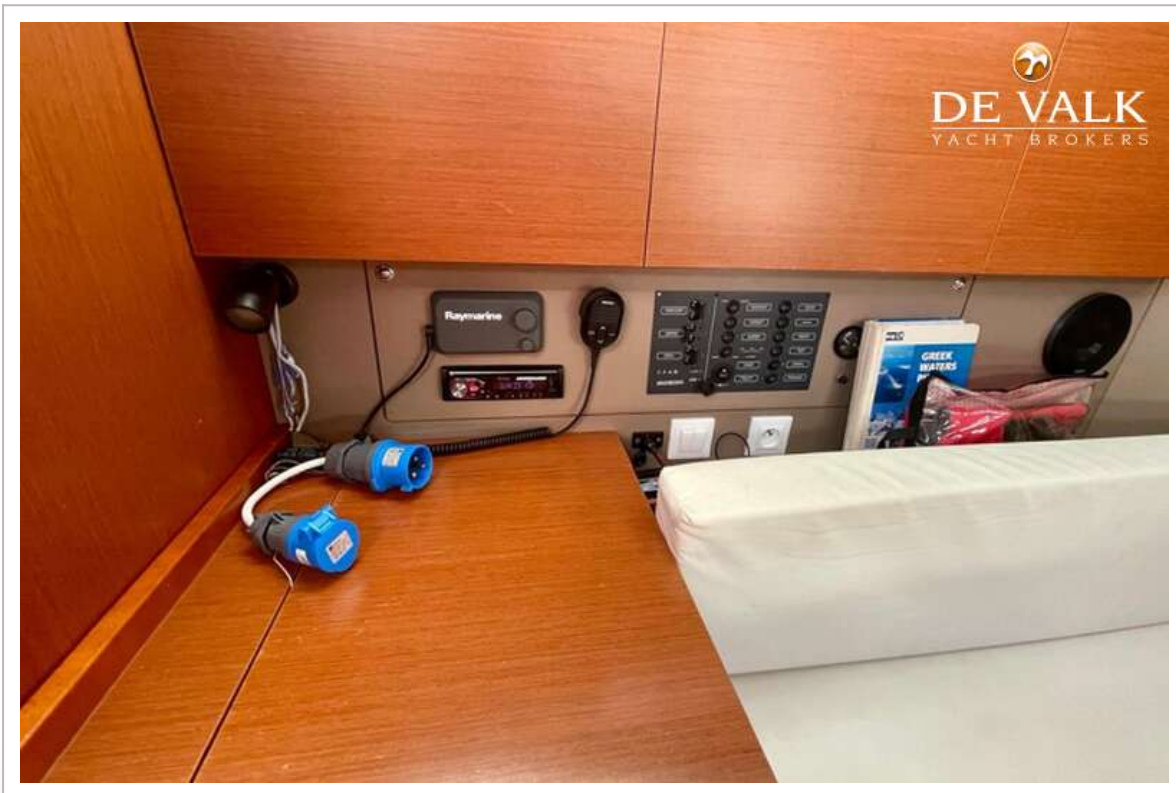
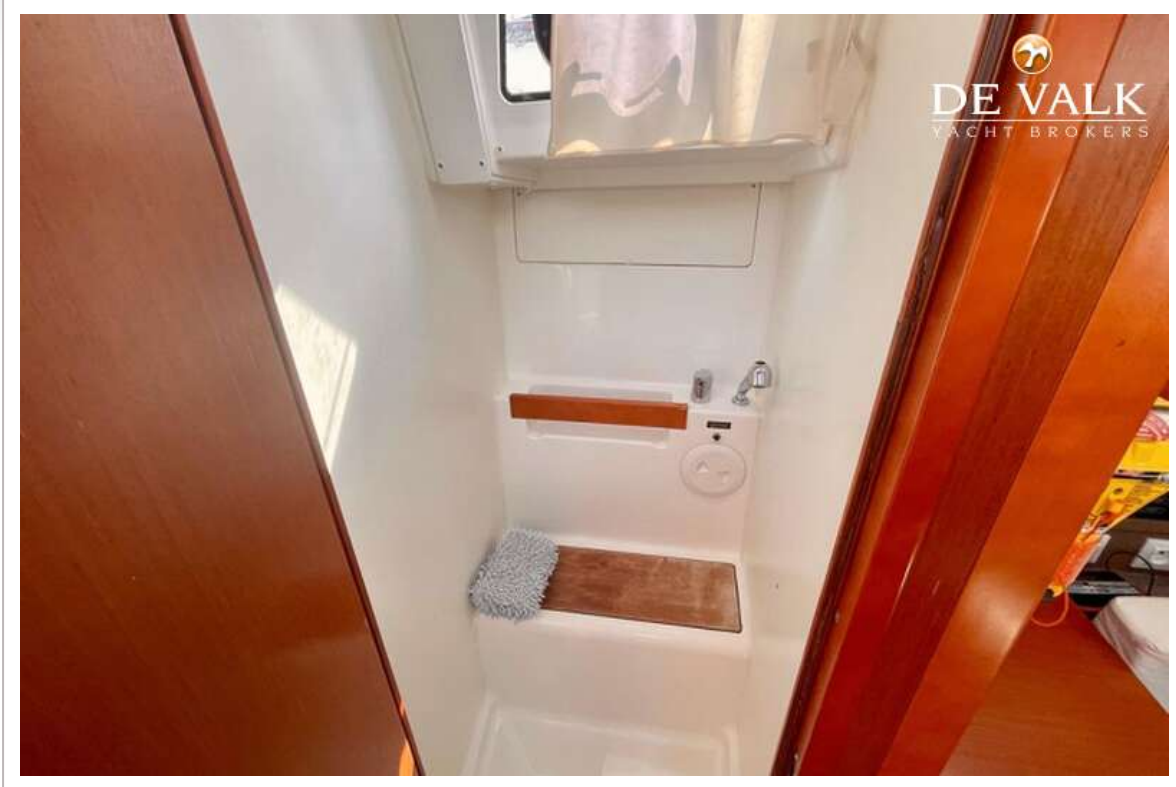
BENETEAU OCEANIS 38



BENETEAU OCEANIS 38



BENETEAU OCEANIS 38



BENETEAU OCEANIS 38



BENETEAU OCEANIS 38

