



DE VALK
YACHT BROKERS



HALLBERG RASSY 40



DE VALK
YACHT BROKERS

HALLBERG RASSY 40

BROKER'S COMMENTS

Immaculate Hallberg Rassy 40, barely used and ready for adventure in Hindeloopen ! Exceptionally well equipped with 3 electric winches and an electric furling mainsail, sailing has never been this effortless. Handles like a dream, making single- or short-handed sailing a joy. Every corner is spotless; she's clearly loved, but not overworked. Perfect for those who want comfort, reliability, and a touch of luxury without breaking a sweat. Come aboard and experience a yacht that practically sails itself! Now ready to be admired and inspected in our sales harbor in Hindeloopen.

Johan Nooitgedagt

SPECIFICATIONS

Dimensions	12.40 x 3.82 x 1.99 (m)	Builder	Hallberg Rassy Varvet AB
Built	2007	Cabins	2
Material	GRP	Berths	5
Engine(s)	1 x Yanmar 4JH 4AE diesel	Hp/Kw	54.00 (hp), 39.74 (kw)
Asking price	€ 298.500 (VAT Paid)	Lying	contact Hindeloopen

CONTACT

Sales office	De Valk Hindeloopen B.V.	Telephone	+31 514 52 40 00
Address	Oosterstrand 1 8713 JS Hindeloopen NL	E-mail	hindeloopen@devalk.nl

DISCLAIMER

These particulars are given in good faith as supplied but cannot be guaranteed.



HALLBERG RASSY 40

GENERAL

Model	HALLBERG RASSY 40
Type	sailing yacht
LOA (m)	12,40
LWL (m)	11,04
Beam (m)	3,82
Draft (m)	1,99
Air draft (m)	18,30
Headroom (m)	1,90
Year built	2007
Launched	2008
Builder	Hallberg Rassy Varvet AB
Country	Sweden
Designer	Germán Frers
Displacement (t)	10
Ballast (tonnes)	lead 4,1
CE norm	A
Hull material	GRP
Hull colour	white
Hull shape	round-bilged
Keel type	fin keel
Superstructure material	GRP
Rubbing strake	stainless steel
Deck material	GRP
Deck finish	teak
Superstructure deck finish	non-skid moulded in
Cockpit deck finish	teak
Antifouling (year)	2024
Dorades	yes
Window frame	aluminium
Window material	tempered glass



HALLBERG RASSY 40

Deckhatch	yes
Fuel tank (litre)	stainless steel 2 tanks Total 460 ltr.
Level indicator (fuel tank)	yes
Freshwater tank (litre)	stainless steel 460 ltr.
Level indicator (freshwater)	yes
Blackwater tank (litre)	stainless steel 80 ltr.
Level indicator (blackwater)	yes
Blackwater tank extraction	deck extraction + uw line
Wheel steering	mechanical
Emergency tiller	yes

ACCOMMODATION

Cabins	2
Berths	5
Interior	mahogany
Layout	Comfortable saloon with L-shaped settee, two free-standing lounge chairs, navigation station and galley. Forward is a spacious guest cabin with bathroom. A generous owner's cabin.
Floor	teak and holly
Saloon	With two lounge chairs Blue upholstery 891
Headroom saloon (m)	1.92 mtr.
Heating	diesel ducted hot air Webasto EVO 55
Chart table	yes
Aft Cabin	yes
Galley	yes
Countertop	Duropal
Sink	stainless steel 2x
Cooker	calor gas ENO - 2 burner
Oven	In cooker
Fridge	Isotherm water cooled with electric compressor
Hot water system	220V + engine 40 ltr. boiler
Water pressure system	electrical



HALLBERG RASSY 40

Crockery	yes
Owners cabin	double bed + single bed Aft cabin
Bed length (m)	2,00 mtr.
Wardrobe	hanging and shelves
Guest cabin 1	v-bed Front cabin
Bed length (m)	2,00 mtr.
Wardrobe	hanging and shelves
Bathroom	shared
Toilet	Jabsco
Toilet system	manual
Wash basin	at the toilet
Shower	shared

MACHINERY

No of engines	1
Make	Yanmar
Type	4JH 4AE
HP	54
kW	39.74
Fuel	diesel
Year installed	2007
Maximum speed (kn)	7
Cruising speed (kn)	6
Consumption (l/hr)	3
Range (nm)	710
Engine hours	469 + 136
Engine cooling system	freshwater heat exchanger
Drive	shaft
Shaft seal	Winter 2022/2023 replaced
Engine controls	bowden cable
Gearbox	mechanical



HALLBERG RASSY 40

Bowthruster	electric Sleipner SP95T with spare props
Exhaust	watercooled
Propeller type	folding 1x fixed spare prop 1x Flexofold
Propeller blades	3
Propeller shaft material	stainless steel
Manual bilge pump	yes
Electric bilge pump	yes
Electrical installation	12 / 220 volt
Start battery	2019 2x Optima Redtop 55Ah
Service battery	6 x 6V batteries, configured as 2 x 12V banks, plus one 100Ah battery
Battery monitor	Mastervolt Mass charger control & Vetus pure sine wave inverter control
Battery charger	Mastervolt Mass 12 / 80
Inverter	Vetus 2000w
Solar panel	MPPT Solar ChargeMaster 25 2 solar panels installed
Shorepower	with cable
Extra info	two separate fuel filters Separ fuelfilter 2x

NAVIGATION

Compass	Garmin type125
Multi control display	2022 Raymarine 2 i70 & 2x Furuno FI-50
Depth sounder	yes
Log	yes
Windset	2022 Raymarine Wind i60
VHF	2022 2x ICOM IC-M510 & ICOM Command-mic
Autopilot	Raymarine 7001+ incl. Rategyro en AH Linear drive type 2 + remote control
Rudder angle indicator	On autopilot
Radar	2022 Raymarine Quantum 2 Dop
GPS	Furuno GP-32
Plotter/GPS	2022 Raymarine Axiom 9" inside



HALLBERG RASSY 40

Radar/GPS/plotter	2022 Raymarine Axiom 12" outside
Navtex	Furuno NX-300
AIS transceiver	B&G V3100 Class B AIS
EPIRB	OceanSignal E100G (Batt-2024)
Navigation lights	All led

EQUIPMENT

Fixed windscreen	yes
Sprayhood	2022
Cockpit cover	2024
Sun awning	2023
Cockpit cushions	yes
Cockpit table	yes
Bathing platform	yes
Boarding ladder	stainless steel
Bow ladder	yes
Deck shower	at bathing platform
Anchor	Delta 20kg
Anchor chain	60 mtr. 8 mm
Windlass	electrical Lewmar V1-6
Capstan	yes
Outboard support	yes
Sea railing	wire
Grab rail (superstructure)	teak
Railing side opening gates	yes
Pushpit	yes
Pulpit	yes
Life raft	container Plastimo Cruiser ORC
Life raft (pers)	container 6
Last life raft survey	2024
Safety lines on deck	yes



Rope cutter	yes
Horn	yes
Fenders	yes
Mooring lines	yes
Spare parts	yes
TV	Samsung
Radio	Fusion MS-RA70
Speakers in salon	yes
Speakers in cabin	yes
Clock - barometer	Wempe
Fire extinguisher	yes

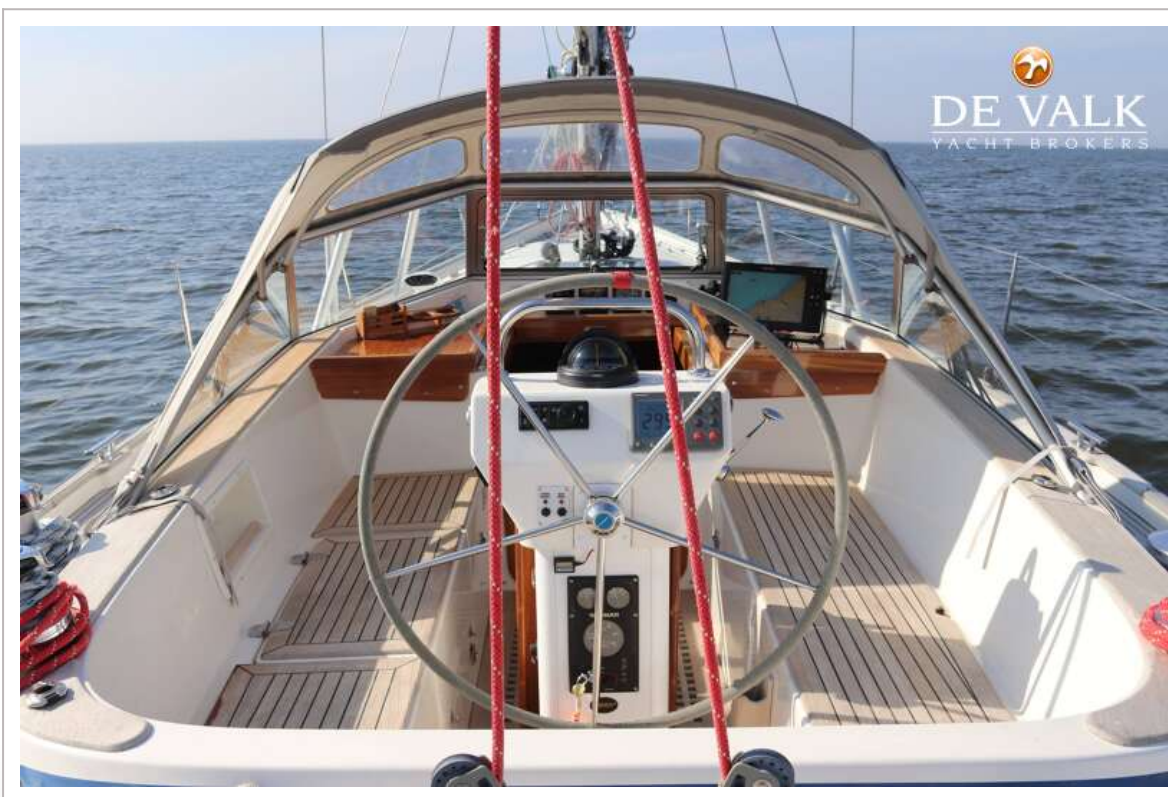
RIGGING

Rigging	sloop
Standing rigging	wire
Brand mast	Seldén
Material mast	aluminium
Spreaders	3 pair
Mainsail	2013 Witte wrongel 34,7m ²
Mainsail cover	yes
Stoway mast	yes
Genoa	2007 Elvström, 38,5m ² 2013 Witte Wrongel 48m ²
Genoa furler	Seldén Furlex 300S
Code Zero	2014 Witte wrongel 72m ² with furler
Reefing System	main in-mast furling
Backstay adjuster	mechanical Seldén
Boomvang	gasspring
Primary sheet winch	1x Lewmar 30 & 1x Lewmar 40 electric
Genoa sheetwinches	2x Lewmar ST50 electric
Halyard winches	on the mast 2x Lewmar ST40
Jockey-pole	stainless steel Removable





HALBERG RASSY 40



HALBERG RASSY 40



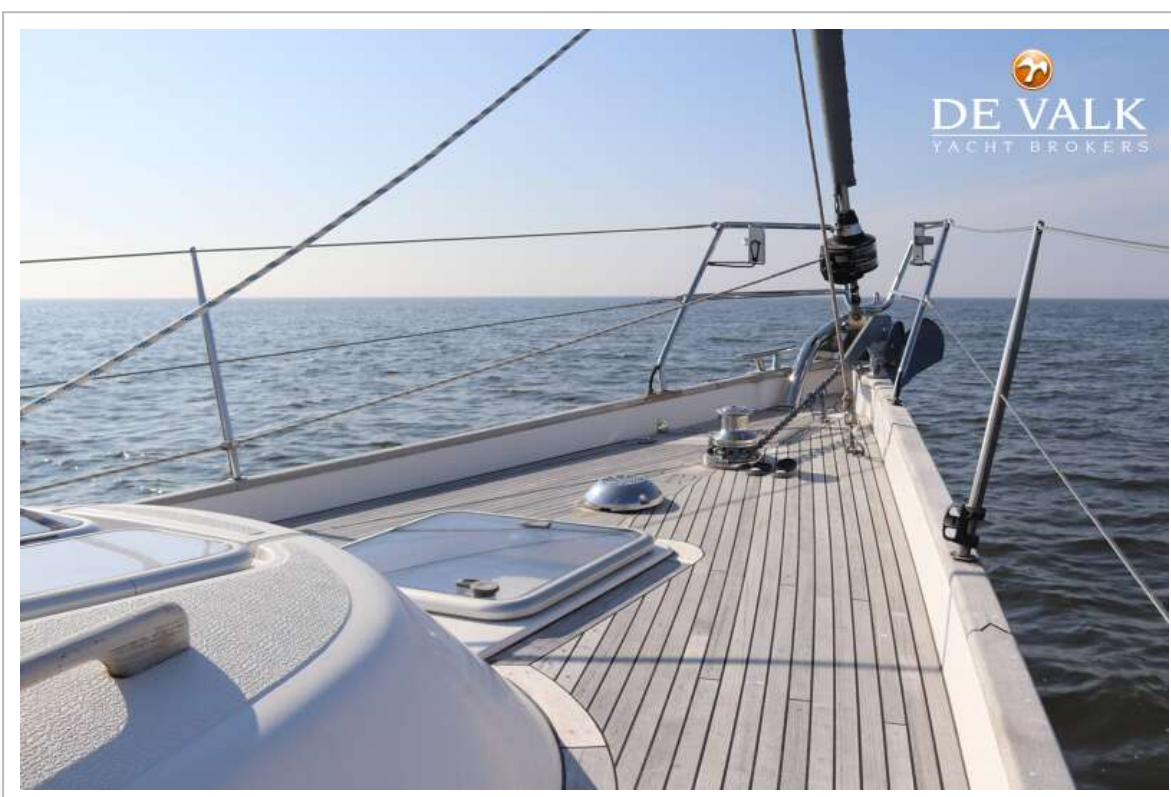
HALBERG RASSY 40



HALLBERG RASSY 40



HALBERG RASSY 40



HALLBERG RASSY 40



HALLBERG RASSY 40



HALBERG RASSY 40



HALLBERG RASSY 40



HALLBERG RASSY 40



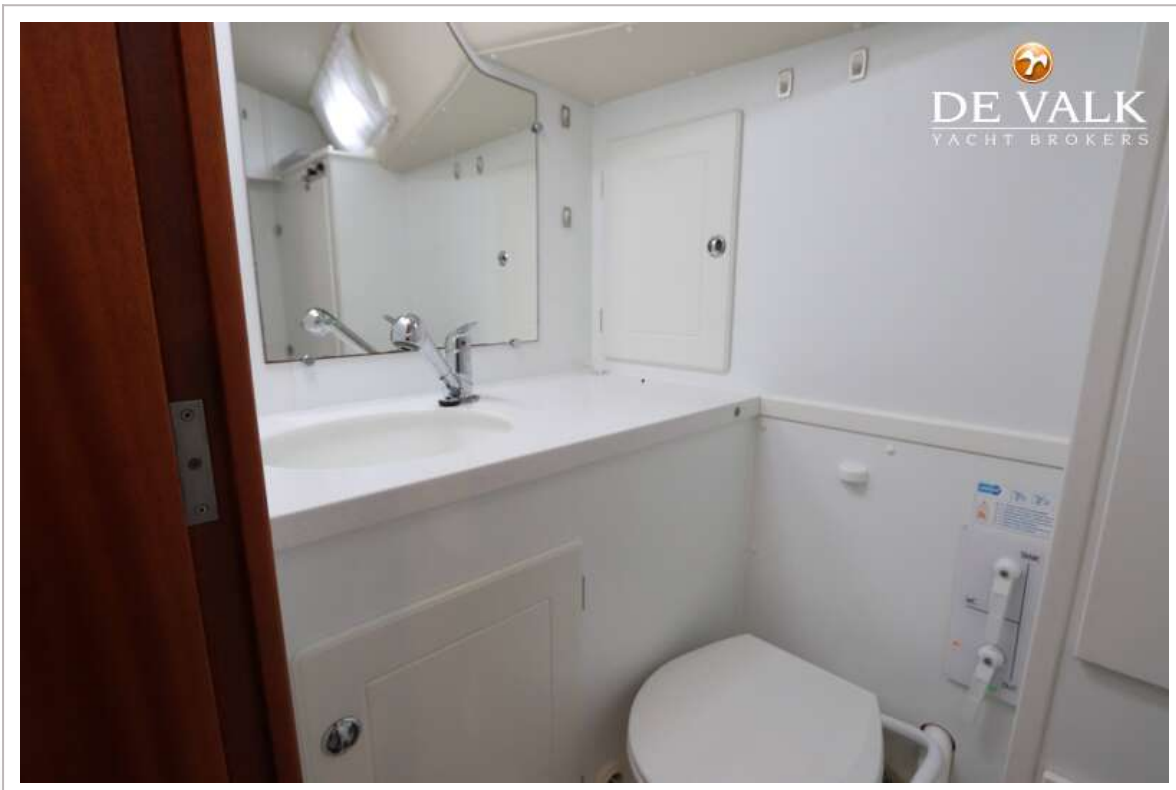
HALLBERG RASSY 40



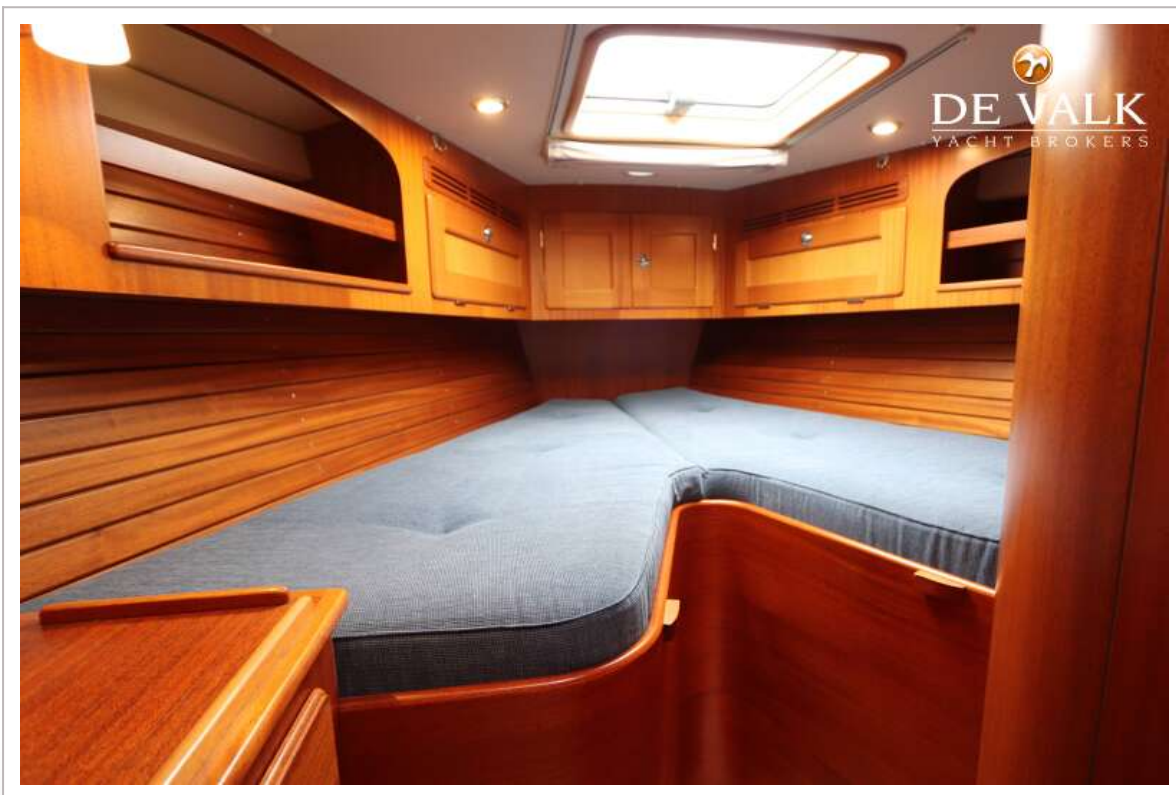
HALLBERG RASSY 40



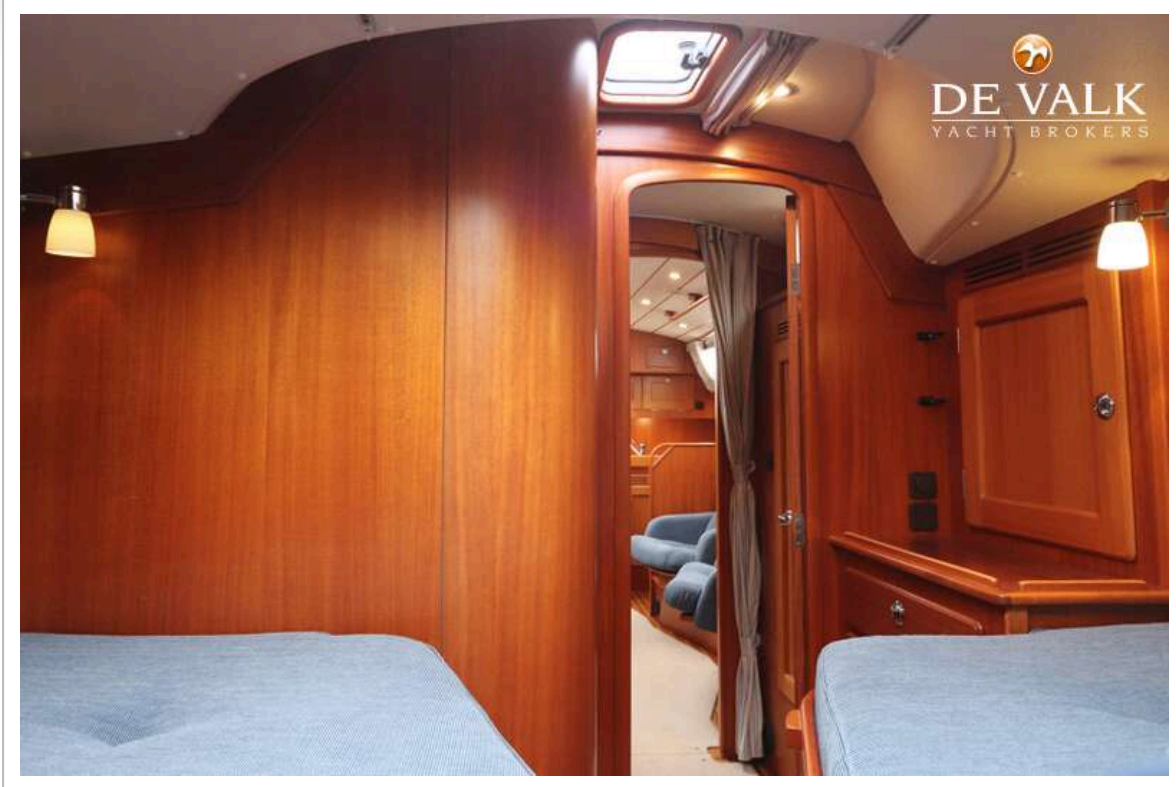
HALLBERG RASSY 40



HALLBERG RASSY 40



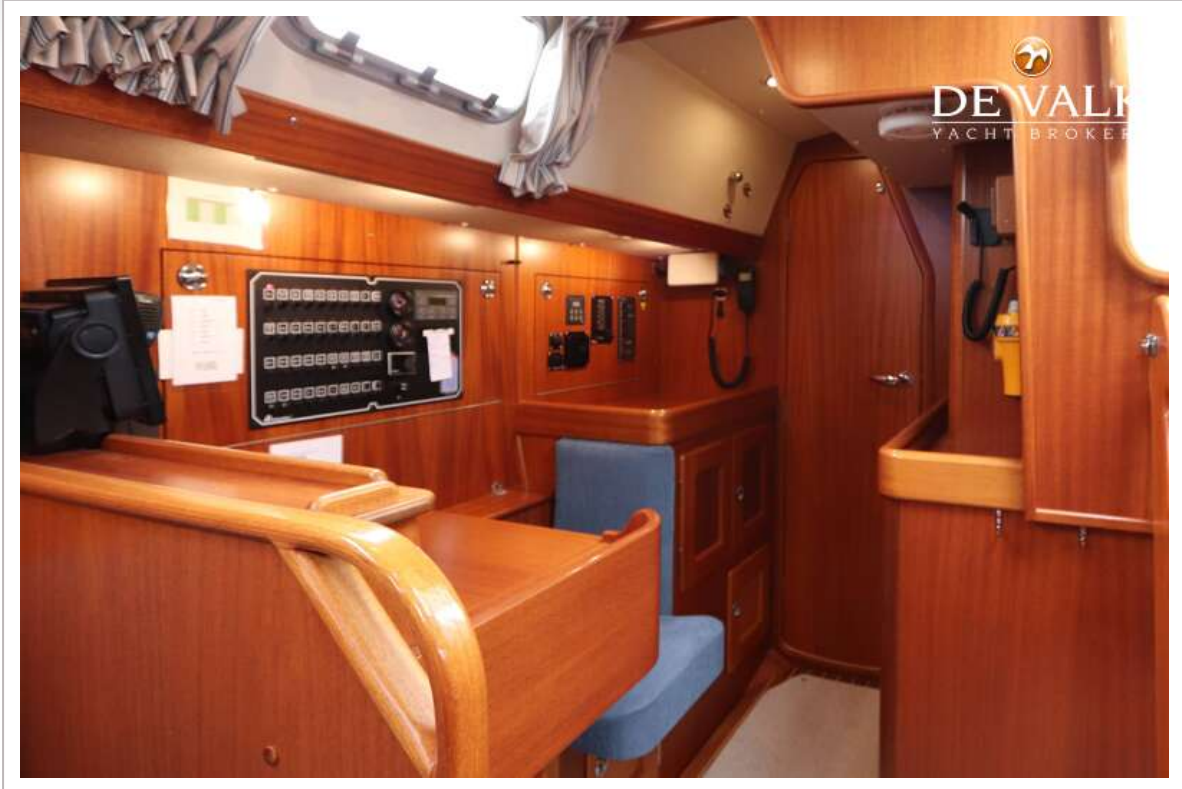
HALLBERG RASSY 40



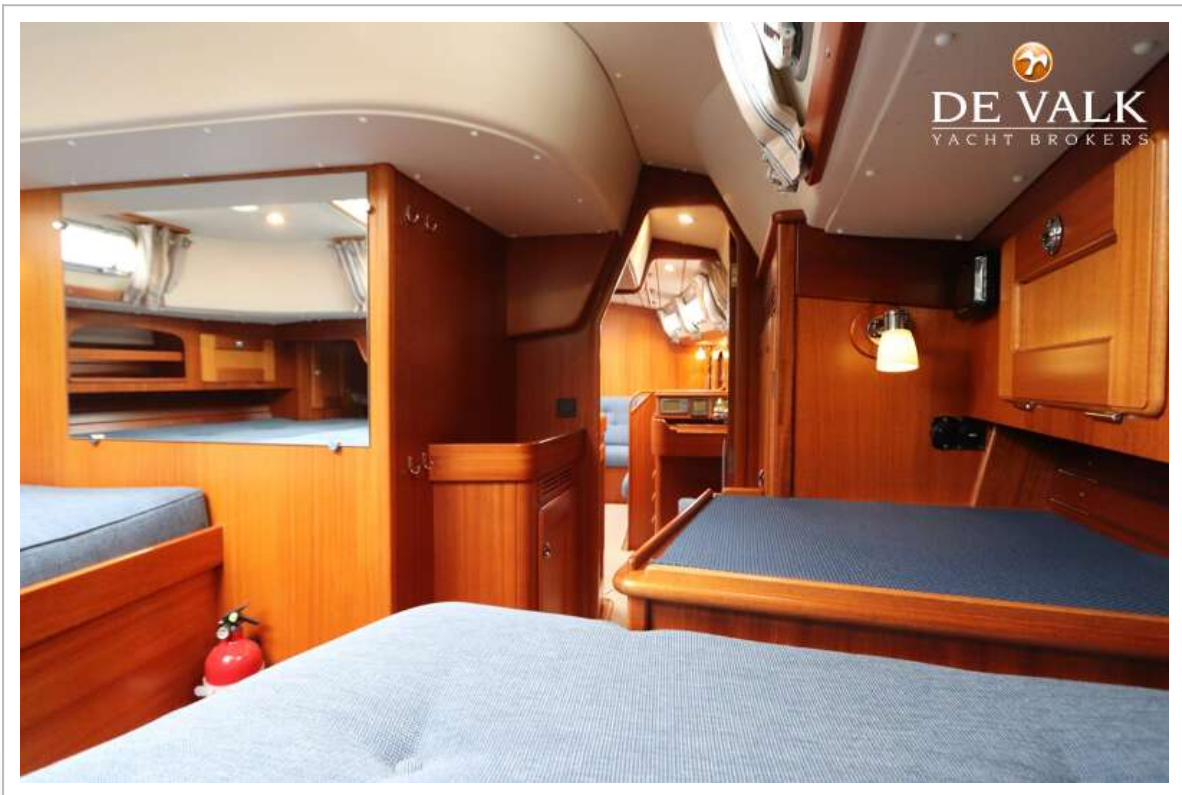
HALLBERG RASSY 40



HALLBERG RASSY 40



HALLBERG RASSY 40



HALLBERG RASSY 40

