



DE VALK  
YACHT BROKERS



## LINSSEN GRAND STURDY 40.9 SEDAN



DE VALK  
YACHT BROKERS

# LINSSEN GRAND STURDY 40.9 SEDAN

## BROKER'S COMMENTS

Timeless design & build quality meets carefree cruising. This Linssen Grand Sturdy 40.9 Sedan is the motor yacht for those who have earned the time to enjoy life at a gentler pace. With its spacious open cockpit, superb craftsmanship plus one level ergonomics, she is ready to cast off without compromise. Designed for relaxed journeys through the French canals and Europe's most beautiful waterways, she offers comfort, safety and understated luxury in every detail. Lots new installed in 2022/23. Step onboard, turn a long-held dream into your new way of life. 2nd Owner and located Netherlands.

*Pieter Bosma*

## SPECIFICATIONS

<b>Dimensions</b>	12.85 x 4.30 x 1.25 (m)	<b>Builder</b>	Linssen Yachts
<b>Built</b>	2011	<b>Cabins</b>	2
<b>Material</b>	Steel	<b>Berths</b>	6
<b>Engine(s)</b>	1 x Volvo Penta D3-110 diesel	<b>Hp/Kw</b>	110.00 (hp), 80.96 (kw)
<b>Asking price</b>	€ 349.000 (VAT Paid)	<b>Lying</b>	at sales office

## CONTACT

<b>Sales office</b>	De Valk Sneek	<b>Telephone</b>	+31 (0)515 42 80 30
<b>Address</b>	Zwolsmanweg 7 8606 KC Sneek NL	<b>E-mail</b>	sneek@devalk.nl

## DISCLAIMER

These particulars are given in good faith as supplied but cannot be guaranteed.



# LINSSEN GRAND STURDY 40.9 SEDAN

## GENERAL

<b>Model</b>	LINSSEN GRAND STURDY 40.9 SEDAN
<b>Type</b>	motor yacht
<b>LOA (m)</b>	12,85
<b>Beam (m)</b>	4,30
<b>Draft (m)</b>	1,25
<b>Air draft (m)</b>	2,65
<b>Headroom (m)</b>	1,97
<b>Year built</b>	2011
<b>Builder</b>	Linssen Yachts
<b>Country</b>	The Netherlands
<b>Designer</b>	Linssen Yachts
<b>Displacement (t)</b>	16
<b>CE norm</b>	B
<b>Hull material</b>	steel
<b>Hull colour</b>	beige
<b>Hull shape</b>	multi hard chine
<b>Superstructure material</b>	steel
<b>Rubbing strake</b>	fender rope
<b>Deck material</b>	steel
<b>Deck finish</b>	teak
<b>Superstructure deck finish</b>	non-skid paint
<b>Cockpit deck finish</b>	teak
<b>Window frame</b>	aluminium
<b>Window material</b>	tempered glass
<b>Deckhatch</b>	2 x, plus sliding hatch in salon
<b>Portholes</b>	yes
<b>Mast can be lowered</b>	manual
<b>Fuel tank (litre)</b>	steel 840
<b>Level indicator (fuel tank)</b>	yes
<b>Freshwater tank (litre)</b>	polyethylene 440



# LINSSEN GRAND STURDY 40.9 SEDAN

<b>Level indicator (freshwater)</b>	yes
<b>Blackwater tank (litre)</b>	polyethylene 240
<b>Level indicator (blackwater)</b>	yes
<b>Blackwater tank extraction</b>	deck extraction + pump
<b>Wheel steering</b>	hydraulic
<b>Emergency tiller</b>	yes
<b>Extra info</b>	Mosquito-screens for deckhatches and salondoor.
<b>Extra info</b>	This Linssen is currently in winterstorage but can be visited.

## ACCOMMODATION

<b>Cabins</b>	2
<b>Berths</b>	6
<b>Interior</b>	cherry
<b>Floor</b>	wood
<b>Open cockpit</b>	with L-shape seating area and access to the large cockpit lazarette
<b>Pilot house/deck saloon</b>	yes
<b>Saloon</b>	Bright saloon with 360° panoramic view. Luxurious L-shape settee
<b>Headroom saloon (m)</b>	2,01 - 1,97
<b>Sliding roof</b>	manual Linssen Sedan Variodeck
<b>Heating</b>	diesel ducted hot air Autoterm
<b>Dinette to convert into berth</b>	L-shape sofa turns into double bed "Linssen Easy-sleep-comfort system"
<b>Opening door to cockpit</b>	2 x varnished, solid teak doors
<b>Galley</b>	yes
<b>Countertop</b>	Corian
<b>Sink</b>	stainless steel 1 x
<b>Cooker</b>	electric Siemens 3 burner (220v ceramic)
<b>Microwave/oven combi</b>	Siemens Combi 220v (2021)
<b>Fridge</b>	Isotherm, frontloading (12v)
<b>Hot water system</b>	220V + engine Boiler (50 ltr)



# LINSSEN GRAND STURDY 40.9 SEDAN

<b>Water pressure system</b>	electrical
<b>Owners cabin</b>	double bed
<b>Bed length (m)</b>	2,00 x 1,55
<b>Wardrobe</b>	hanging/drawers/shelves
<b>Bathroom</b>	en suite
<b>Toilet</b>	en suite
<b>Toilet system</b>	electric
<b>Wash basin</b>	in the bathroom
<b>Shower</b>	separate
<b>Extra info</b>	bespoke bedlinen & towels
<b>Guest cabin 1</b>	twin single
<b>Bed length (m)</b>	2 x 1,90 x 0,65
<b>Wardrobe</b>	shelves
<b>Washing machine/dryer combi</b>	(220v)
<b>Extra info</b>	Three extra opening and salon-windows for extra light & ventilation.

## MACHINERY

<b>No of engines</b>	1
<b>Make</b>	Volvo Penta
<b>Type</b>	D3-110
<b>HP</b>	110
<b>kW</b>	80.96
<b>Fuel</b>	diesel
<b>Year installed</b>	2011
<b>Maximum speed (kn)</b>	9
<b>Cruising speed (kn)</b>	7
<b>Engine hours</b>	1110
<b>Engine cooling system</b>	freshwater heat exchanger
<b>Drive</b>	shaft
<b>Engine controls</b>	electrical Volvo Penta EVC



# LINSSEN GRAND STURDY 40.9 SEDAN

<b>Gearbox</b>	hydraulic ZF45H
<b>Bowthruster</b>	electric Sleipner (2011)
<b>Sternthruster</b>	electric Sleipner (2021)
<b>Exhaust</b>	watercooled
<b>Thrust bearing</b>	Aquadrive
<b>Propeller type</b>	fixed
<b>Propeller blades</b>	4
<b>Propeller shaft material</b>	stainless steel
<b>Shaft lubrication</b>	water
<b>Electric bilge pump</b>	(2022)
<b>Electrical installation</b>	12/220v
<b>Generator</b>	silent separator Whisper Mastervolt 8 Ultra (220v/8kW)
<b>Running hours generator</b>	50
<b>Start battery</b>	4 x Mastervolt AGM (start, bow- and sternthruster)
<b>Service battery</b>	2 x Victron Lithium 12v/200ah LiFePO4 (2023) + Lynx Smart BMS
<b>Battery monitor</b>	Victron GX Touch 50 (2023)
<b>Battery charger</b>	Victron Phoenix Smart 12v/30amp + Victron DC/DC Orion XS (2023)
<b>Battery charger/inverter</b>	Victron Quatro 12v/3000/120amp (2023)
<b>Solar panel</b>	6 x 120wp + Victron MPT 100/50 (2023)
<b>Shorepower</b>	with cable
<b>Insulation transformer</b>	Victron (2023)
<b>Extra info</b>	Yacht Controller remote for bow- and sternthruster, engine and anchorwinch (2022)

## NAVIGATION

<b>Electric compass</b>	via autopilot
<b>Depth sounder/log</b>	Raymarine i70S display + log/depth transducer (2022)
<b>Windset</b>	Raymarine transducer (2022)
<b>VHF</b>	Raymarine Ray63 (2022)
<b>Autopilot</b>	Raymarine P70R + EV-200 pack & compass (2022)



# LINSSEN GRAND STURDY 40.9 SEDAN

<b>Rudder angle indicator</b>	via autopilot
<b>Radar</b>	Raymarine QuantumQ24D doppler (2022)
<b>Plotter</b>	2 x Raymarine Axiom 12" MFD (2022)
<b>Wifi antenna</b>	CAT5 4G modem & wifi
<b>Electronic chart(s)</b>	Navionics-Raymarine Lighthouse (2025)
<b>AIS transponder</b>	Raymarine AIS700 Class B (2022)
<b>Camera</b>	2 x Raymarine Cam210 + AR200 Augmented Reality Module (2022)
<b>Navigation lights</b>	yes
<b>Extra info</b>	Seataalk/Nema2000 Backbone + 1Gb Ethernet Network, Netgear switch

## EQUIPMENT

<b>Cockpit cover</b>	Linssen (2021) with zipp-out panels.
<b>Cockpit cushions</b>	yes
<b>Cockpit table</b>	yes
<b>Bathing platform</b>	yes
<b>Boarding ladder</b>	stainless steel
<b>Transom door</b>	yes
<b>Deck shower</b>	hot & cold
<b>Anchor</b>	Pool
<b>Anchor chain</b>	yes
<b>Windlass</b>	electrical Lofrans Tigress 1500watt (2023)
<b>Deck wash</b>	(2022)
<b>Dinghy</b>	inflatable
<b>Outboard</b>	Torqueedo, electric including batteries and charger)
<b>Sea railing</b>	stainless steel
<b>Grab rail (superstructure)</b>	stainless steel
<b>Railing side opening gates</b>	2 x with fold-down step-ladder
<b>Pulpit</b>	yes
<b>Lifebuoy</b>	1 x
<b>Wiper</b>	2 x with washing



# LINSSEN GRAND STURDY 40.9 SEDAN

<b>Horn</b>	yes
<b>Fenders</b>	yes
<b>Mooring lines</b>	yes
<b>TV</b>	HP Monitor (27")
<b>Radio-cd player</b>	yes
<b>Speakers in salon</b>	yes
<b>Fire extinguisher</b>	2 x (serviced)



# LINSSEN GRAND STURDY 40.9 SEDAN



# LINSSEN GRAND STURDY 40.9 SEDAN



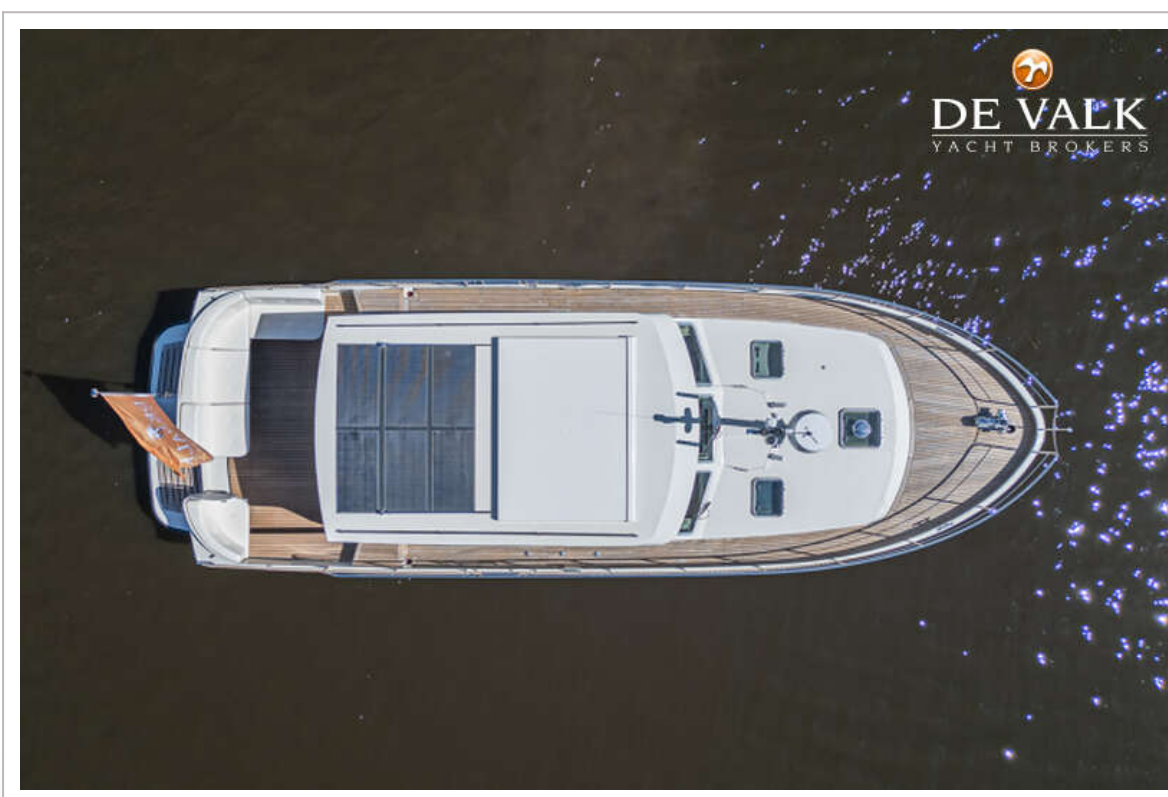
# LINSSEN GRAND STURDY 40.9 SEDAN



# LINSSEN GRAND STURDY 40.9 SEDAN



# LINSSEN GRAND STURDY 40.9 SEDAN



# LINSSEN GRAND STURDY 40.9 SEDAN



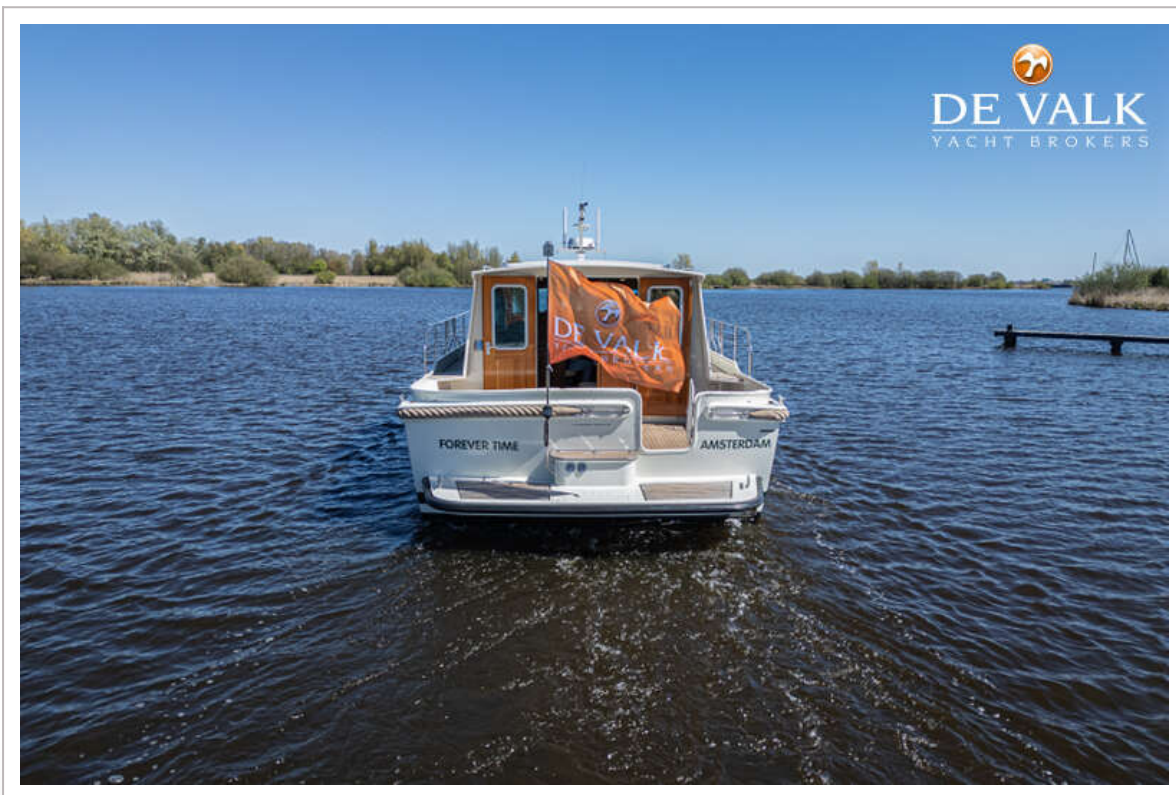
# LINSSEN GRAND STURDY 40.9 SEDAN



# LINSSEN GRAND STURDY 40.9 SEDAN



# LINSSEN GRAND STURDY 40.9 SEDAN



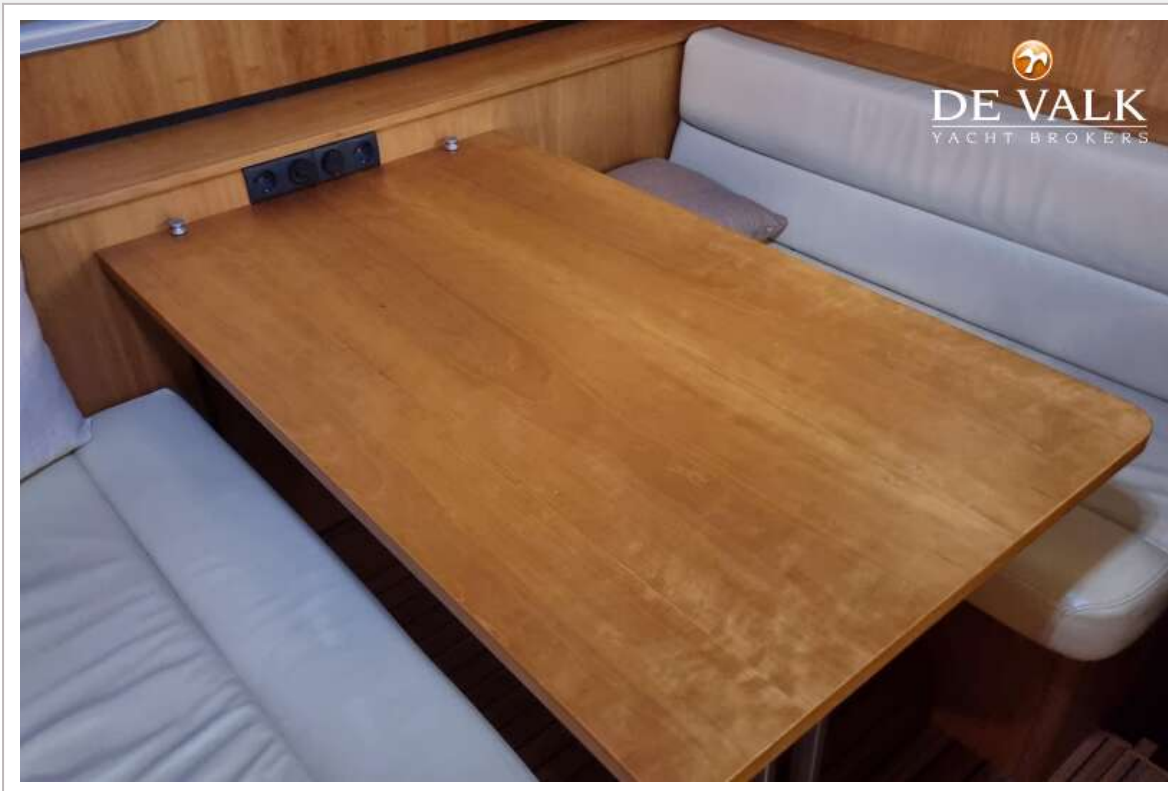
# LINSSEN GRAND STURDY 40.9 SEDAN



# LINSSEN GRAND STURDY 40.9 SEDAN



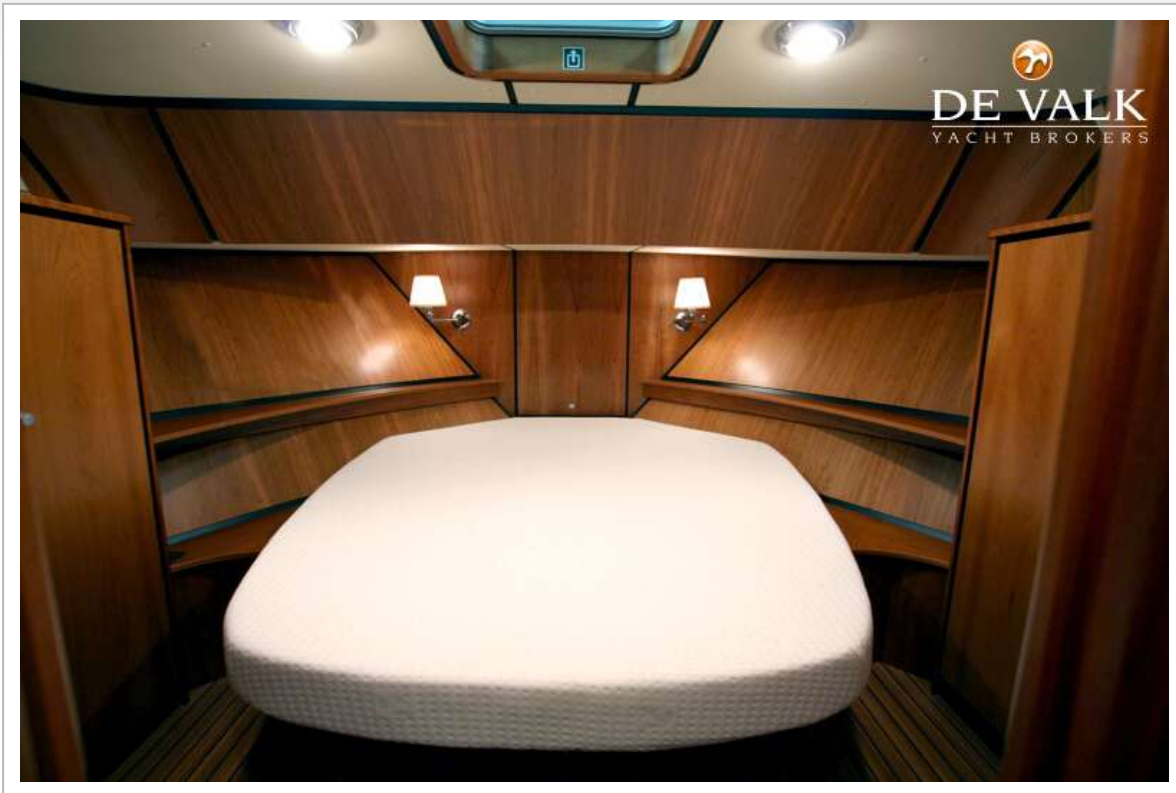
# LINSSEN GRAND STURDY 40.9 SEDAN



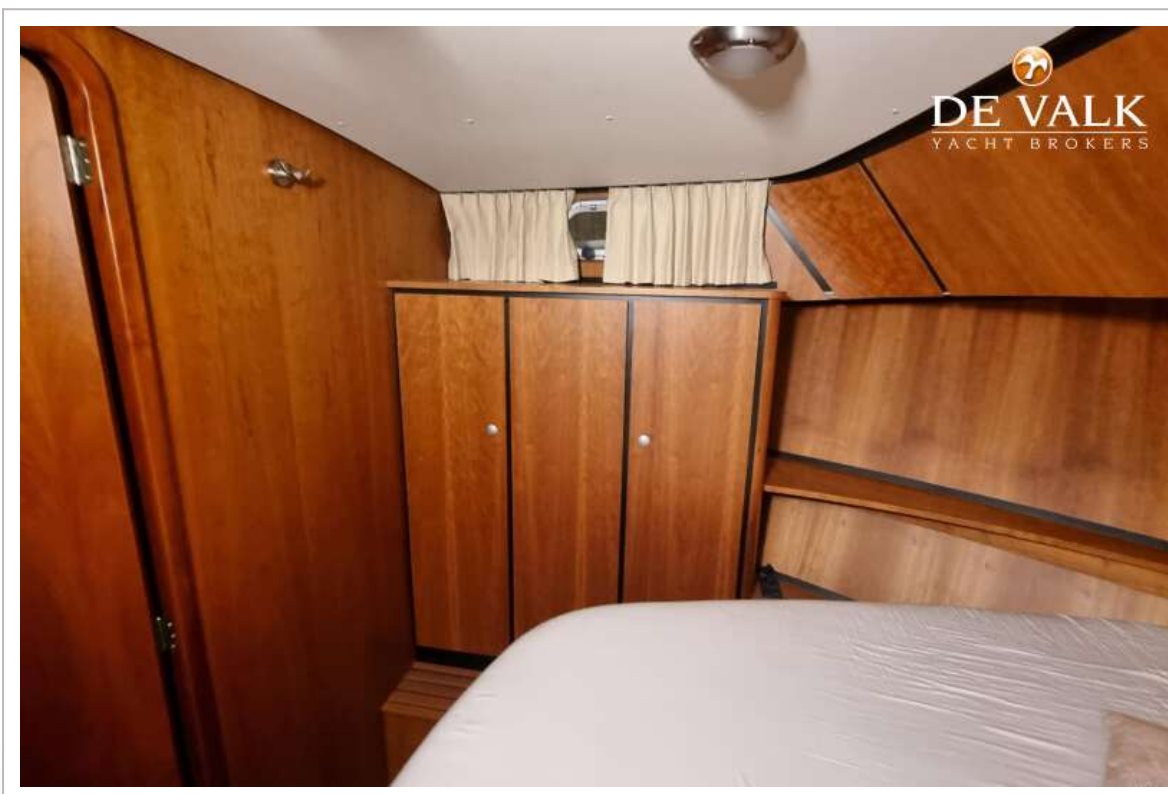
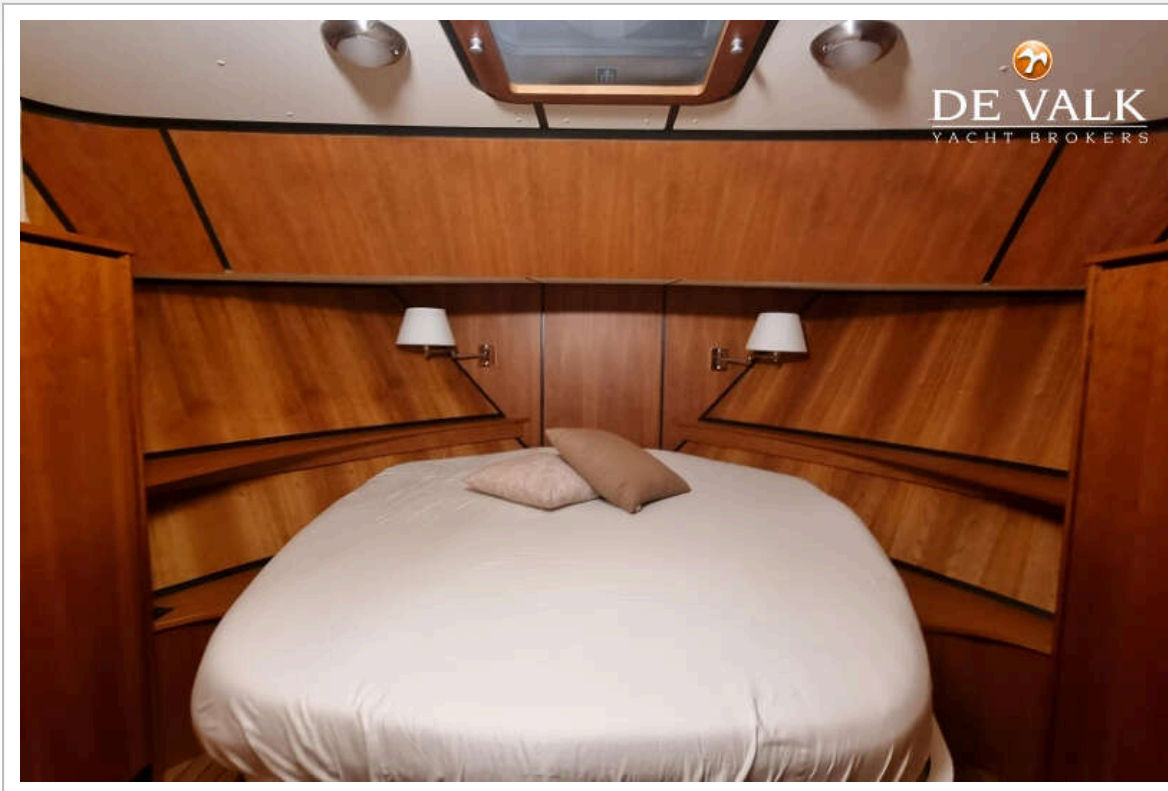
# LINSSEN GRAND STURDY 40.9 SEDAN



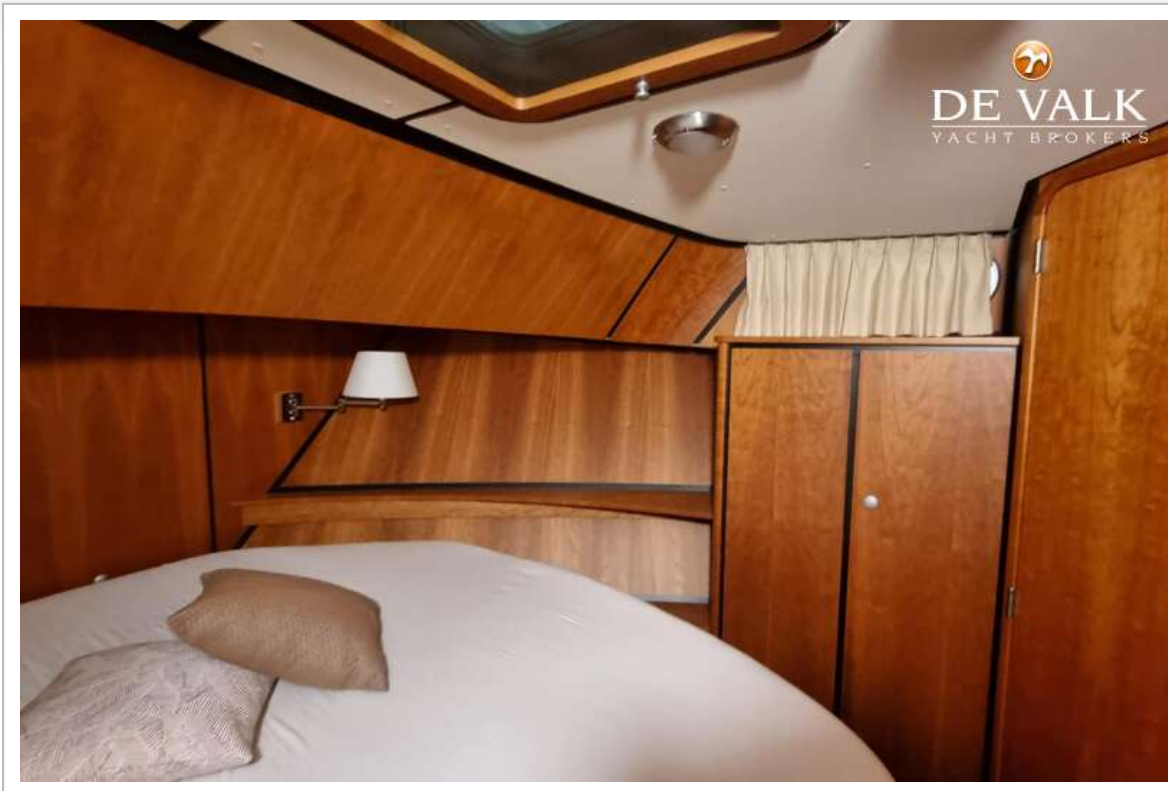
# LINSSEN GRAND STURDY 40.9 SEDAN



# LINSSEN GRAND STURDY 40.9 SEDAN



# LINSSEN GRAND STURDY 40.9 SEDAN



# LINSSEN GRAND STURDY 40.9 SEDAN



# LINSSEN GRAND STURDY 40.9 SEDAN



# LINSSEN GRAND STURDY 40.9 SEDAN



# LINSSEN GRAND STURDY 40.9 SEDAN



# LINSSEN GRAND STURDY 40.9 SEDAN



