



DE VALK
YACHT BROKERS



SUNSEEKER 28 M YACHT



DE VALK
YACHT BROKERS

SUNSEEKER 28 M YACHT

BROKER'S COMMENTS

The sun glistens on the Adriatic Sea as you step aboard the Sunseeker Yacht 28M from 2013, now in Montenegro. Between 2016 and 2021, this yacht underwent extensive refit works, leaving it in a condition close to showroom quality. With only 1250 operating hours and a survey and sea trials in June 2023, with no remarks, it is completely ready for sale. Whether you want to relax, entertain, or explore the open sea, this Sunseeker 28M offers ultimate comfort and style. Step aboard and experience luxury at its finest!

Reinier van der Wolf

SPECIFICATIONS

Dimensions	28.15 x 6.50 x 2.13 (m)	Builder	Sunseeker International Poole
Built	2013	Cabins	4
Material	GRP	Berths	12
Engine(s)	2 x MTU M96 diesel	Hp/Kw	2 x 2,000.00 (hp), 1,472.00 (kw)
Asking price	€ 3.200.000 (VAT Not paid)	Lying	elsewhere / Not at sales office

CONTACT

Sales office	De Valk Monnickendam B.V.	Telephone	+31 (0)299 65 63 50
Address	Hoogedijk 6 1145 PM Katwoude NL	E-mail	monnickendam@devalk.nl

DISCLAIMER

These particulars are given in good faith as supplied but cannot be guaranteed.



SUNSEEKER 28 M YACHT

GENERAL

Model	SUNSEEKER 28 M YACHT
Type	motor yacht
LOA (m)	28,15
Beam (m)	6,50
Draft (m)	2,13
Year built	2013
Launched	2013
Builder	Sunseeker International Poole
Country	United Kingdom
Designer	Don Shead
Displacement (t)	76,1
CE norm	A
Hull material	GRP
Hull colour	white
Hull shape	Fast Displacement Hull
Superstructure material	GRP
Deck material	GRP
Deck finish	teak
Superstructure deck finish	paint
Cockpit deck finish	teak
Flybridge	Self-draining cockpit Acrylic deflecting spray screen Seating areas Storage lockers under seating Teak dining tables (natural finish) with stainless steel pedestal Upholstered sunbathing area forward Stainless steel aft safety rails Glass holders Wetbar unit Sink in wetbar unit Icemaker in wetbar unit Fridge in wetbar unit Ceramic electric griddle in wetbar unit Fire extinguisher in wetbar locker Deckwash outlet Low-level flybridge LED lighting (24v) Radar arch structure Radar chair with navigation light assembly Overhead LED lighting on underside of radar arch (24v) Two pairs marine speakers (connected to dedicated CD/radio in saloon) Teak decking Ensign staff and socke
Fuel tank (litre)	GRP 9000
Freshwater tank (litre)	aluminium 1500



SUNSEEKER 28 M YACHT

Blackwater tank (litre)	435
Blackwater tank extraction	deck extraction + uw line
Greywater tank (litre)	102 Washbasins, showers and air conditioning fan coils.
Wheel steering	yes
Inside helm position	2 x upholstered helm seats with electric operation Console with carbon fibre effect fascia Hydraulic power steering Steering wheel Radar/chart plotter with GPS Autopilot Depth and speed displays VHF radio first station Magnetic compass Horn control Switch panels Remote spotlight control Trim tab controls Rudder indicator Digital engine instrumentation Fresh water gauge Fuel gauge Cigar lighter Main control and monitoring panel (AC/DC) with generators control Monitoring panel for fire detection system Windscreen wiper and washer controls Glass holder Screen demister Fire extinguisher Manual side opening door to starboard side deck Sofa seat with table on port side Air conditioning LED overhead lighting (24v) Fitted carpet Double AC sockets Staircase forward leading to optional day head and forward VIP stateroom Chart stowage area
Flybridge helm position	Two helm seats Hydraulic steering Duplicate engine controls An
More info on hull	Hand-laid GRP Gel coat including stripes Vinylester skin coat with powderbound mat Stitched multi-axial reinforced single-skin bottom Balsa-cored hull topsides PVC foam-cored deck and superstructure Hull stiffened with longitudinal stringers supported by transverse bulkheads and floors
Extra info	Deck Teak decking Fittings all in 316 stainless steel and chromed bronze Pair stainless steel bow mooring bollards and fairleads Stainless steel spring cleats Pair stern mooring bollards and fairleads Stainless steel pulpit and cockpit rails Stainless steel bow roller with anchor stop and devil's claw Single electric windlass 24v, starboard side, foredeck control only Anchor 100kg claw-type (galvanised) Anchor chain 138 metres/328 feet (12mm diameter, galvanised) Stainless steel bow plate Deckwash with outlets forward and aft Chain locker Curved direct glazed safety glass windscreen Pantograph windscreen wipers and washers Fresh-water filler Fuel fillers port and starboard IMCO navigation lights Remote controlled spotlight at bow Low-level courtesy LED lights on side decks (24v) U-shaped bow seat Twin bow sunbathing pads with storage underneath Bow teak table (natural finish) with adjustable pedestal Glass holders.



SUNSEEKER 28 M YACHT

Extra info

Teak decking Self-draining Stairs to flybridge with composite decking treads Aft fixed U-shaped bench seating Teak table (natural finish) with folding leaves on stainless steel pedestal Stern safety gates Engine room access hatch 2 x stern capstan winches 24v and fairleads Overhead cockpit LED lights (24v) Low-level courtesy LED lights (24v) Pair of marine speakers (connected to dedicated CD/radio in saloon) Remote for CD/radio Wetbar unit Sink in wetbar unit Icemaker in wetbar unit Fire extinguisher in wetbar locker Coolbox in wetbar unit Rubbish bin in wetbar unit

ACCOMMODATION

Cabins

4

Berths

12

Layout

Master cabin amidships (Double island bed) with walk-in wardrobe and en-suite bathroom Large VIP cabin fore (Double island bed) with walk-in wardrobe and en-suite bathroom Double guest cabin with en-suite bathroom Twin cabin convertible into a double with en-suite bathroom 4 Crew in 2 Crew cabins with separate access and bathroom Day-head on main deck

Saloon

Stainless steel framed sliding patio door to aft cockpit Patio door curtains with tie back Sofa seating Coffee table Scatter cushions Flatscreen television (40") on rise and fall DVD/CD/radio surround sound system with five speakers and sub-woofer AirPort Express connected to surround sound system Air conditioning Side windows with blinds Drinks cabinet with glassware stowage for eight (8 x champagne, 8 x whisky, 1 x decanter) LED overhead lighting (24v) Double AC sockets Sensor connected to fire detection system Telephone point (aft starboard side) 1 x table lamp Dining table 8 x freestanding dining chairs Storage cupboards Fitted carpet Access forward to main helm position Access to galley Stairs leading to master stateroom and two guest cabins

Air-conditioning

reverse cycle airco | Chilled water air conditioning system



SUNSEEKER 28 M YACHT

Galley	American style fridge/freezer with ice maker 4-ring ceramic hob AC Hob extractor AC Slimline dishwasher AC Stainless steel sink Hot and cold water Rubbish bin Crockery set (8 place settings) Cutlery set (8 place settings) Side window with blind Storage consisting of cupboards, drawers and top-box lockers LED overhead lighting (24v) LED lighting under top box lockers (24v) Double AC sockets Sensor connected to fire detection system Air conditioning Fire blanket Fire extinguisher First aid kit Manual side opening door to port side deck Access to saloon area Microwave/oven AC
Hot water system	200 litre (with 2 x 2kW immersion heaters)
Water pressure system	electrical 24v
Owners cabin	double bed Midships Master Stateroom
Wardrobe	hanging/drawers/shelves LED overhead lighting Escape hatch to the Forward Lobby
Bathroom	en suite Granite flooring
Toilet	en suite
Toilet system	electric 24v
Wash basin	in the bathroom
Shower	Separate shower compartment with glass shower door
Extra info	Double berth Foam mattress for berth Drawers in berth end and sides Bedside units with storage Bedside lights 24v Dressing table Stool for dressing table Sofa Air conditioning LED overhead lighting (24v) Organic panoramic window sets with round opening portlights (with mosquito screens) Double AC sockets Flatscreen television (40") on bulkhead Blu-ray/CD/radio surround system with two speakers and sub-woofer Sensor connected to fire detection system Fitted carpet Doors to en suite and walk-in wardrobe
Guest cabin 1	double bed Forward VIP Stateroom
Wardrobe	walk-in closet hanging rails, shelves LED overhead lighting AC socket,carpet
Bathroom	en suite Granite flooring
Toilet	en suite 24v
Wash basin	in the bathroom
Shower	Separate shower compartment, glass door



SUNSEEKER 28 M YACHT

Extra info

Stairs leading from main helm area Foam mattress for berth
Storage beneath berth Drawers in berth end Bedside lights 24v
Dressing table Stool for dressing table Air conditioning
Flatscreen television (40") on bulkhead Blu-ray/CD/radio
surround system with two speakers and sub-woofer LED
overhead lighting (24v) Organic panoramic window sets with
round opening portlights (with mosquito screens) Double AC
socket Fitted carpet Sensor connected to fire detection system
Doors to en suite and walk-in wardrobe

Guest cabin 2

twin single | Aft Starboard Twin Guest Cabin

Wardrobe

hanging and drawers

Bathroom

en suite

Toilet

en suite

Toilet system

electric | 24v

Wash basin

yes

Shower

Separate shower compartment, glass door

Extra info

Foam mattresses for berths Under berth stowage 2 x reading
lights 24v Wardrobe Air conditioning LED overhead lighting (24v)
Organic Panoramic window sets with round opening portlights
(with mosquito screens) Double AC socket Sensor connected to
fire detection system Flatscreen television (32") Blu-ray/CD/radio
surround system with two speakers and sub-woofer Fitted carpet
Doors to en suite and lobby

Guest cabin 3

Aft Port Twin Guest Cabin

Wardrobe

yes

Toilet

en suite

Toilet system

electric | 24v

Wash basin

yes

Shower

yes

Extra info

Two single berths Foam mattresses for berths Under-berth
stowage 2 x reading lights 24v Wardrobe Air conditioning LED
overhead lighting (24v) Organic panoramic window sets with
round opening portlights (with mosquito screens) Double AC
socket Sensor connected to fire detection system Flatscreen
television (32") Blu-ray/CD/radio surround system with two
speakers and sub-woofer Fitted carpet Doors to en suite and
lobby



SUNSEEKER 28 M YACHT

Crew cabin(s)	2
Toilet (crew)	yes
Toilet system	electric 24v
Wash basin	yes
Shower (crew)	yes
Extra info	Port Crew Cabin: Twin fixed Pullman bunk berths Foam mattresses for berths Reading lights 24v Air conditioning Wardrobe LED overhead lighting (24v) Double AC socket Sensor connected to fire detection system CD/radio with two speakers Fitted carpet Opening porthole with mosquito screen and curtains Door to crew mess Starboard Crew Cabin Twin fixed Pullman bunk berths Foam mattresses for berths Reading lights 24v Air conditioning Wardrobe LED overhead lighting (24v) Double AC socket Sensor connected to fire detection system CD/radio with two speakers Fitted carpet Opening porthole with mosquito screen and curtains Door to crew mess
Extra info	Aft Crew Mess: Access door from stern Sink with tap Worktop with undercounter storage Air conditioning Small microwave Undercounter fridge AC sockets Washer/dryer AC Telephone point Sensor connected to fire detection system LED overhead lighting (24v) Seating area Table Flatscreen television (19") DVD/CD/radio with two speakers Non-slip safety flooring Doors to crew cabins and crew toilet/shower Watertight door to Engine Room

MACHINERY

No of engines	2
Make	MTU
Type	M96
HP	2000
kW	1472
Fuel	diesel
Year installed	2013
Maximum speed (kn)	29
Cruising speed (kn)	24



SUNSEEKER 28 M YACHT

Range (nm)	400
Engine hours	1250
Engine cooling system	freshwater heat exchanger
Drive	shaft
Shaft seal	Self-aligning shaft seal with spare seal
Engine controls	Hydraulic power steering
Bowthruster	hydraulic 30 hp
Exhaust	watercooled
Propeller type	Twin fixed-pitch submerged propellers in semi-recessed tunnels
Propeller blades	NAB 5 blade
Propeller shaft material	90mm Temet 25
Electric bilge pump	Bilge pumping system (24v)
Electrical installation	Electrical System 2 x 25kW @ 50Hz slowspeed generators with underwater silent exhaust and sound box Dockside AC connection Isolation transformer Semi-automatic AC power distribution 24v DC electrical system with full circuit-breaker protection 8 x starter batteries 24v circuit 12 x domestic batteries 24v circuit Independent battery back-up for VHF radio Automatic battery charge distribution Remote battery switches controlled from aft cockpit locker 1 x 120 amp battery charger/inverter for 24v circuits 1 x 200 amp battery charger/inverter for 24v circuits 3 x 2kW immersion heaters for calorifier AC sockets throughout the boat 24v hand light and cable Class approved fire detection system with sensors in all cabins and monitoring beside main helm position
Stabilizers	Trac Star Stabilization System
Trimtabs	Auxiliary hydraulics for trim tabs (24v) Stainless steel
Extra info	Soundproofing throughout Fuel filters/water separators to engines Fuel filters/water separators to generators Manual/automatic fire extinguishing system combined with engines, generators and fans shutdown Automatic bilge and flood pumps with high-level alarms Air extraction fans AC Generator exhaust silencers and water separators Engine exhaust dry risers and water injection Strainers to all raw water inlets Sensor connected to fire detection system Engine Compartment and Ancillaries



SUNSEEKER 28 M YACHT

EQUIPMENT

Bathing platform

Teak decked hydraulic lifting bathing platform (maximum lifting capacity 650kg/1433lb, maximum tender weight 550kg/1212lb)
Stairs to aft cockpit with teak decking treads Stern spring cleats for stern-to mooring purposes Foldout stainless steel swimming ladder Hot and cold hand-held swimming shower Fresh-water marina connection Television and telephone marina connection Large transom storage lockers Access to crew quarters Dockside AC connection 5m hydraulic telescopic passerelle

Dinghy

yes

Auto extinguisher system

Manual/automatic fire extinguishing system combined with engines, generators and fans shutdown

Extra info

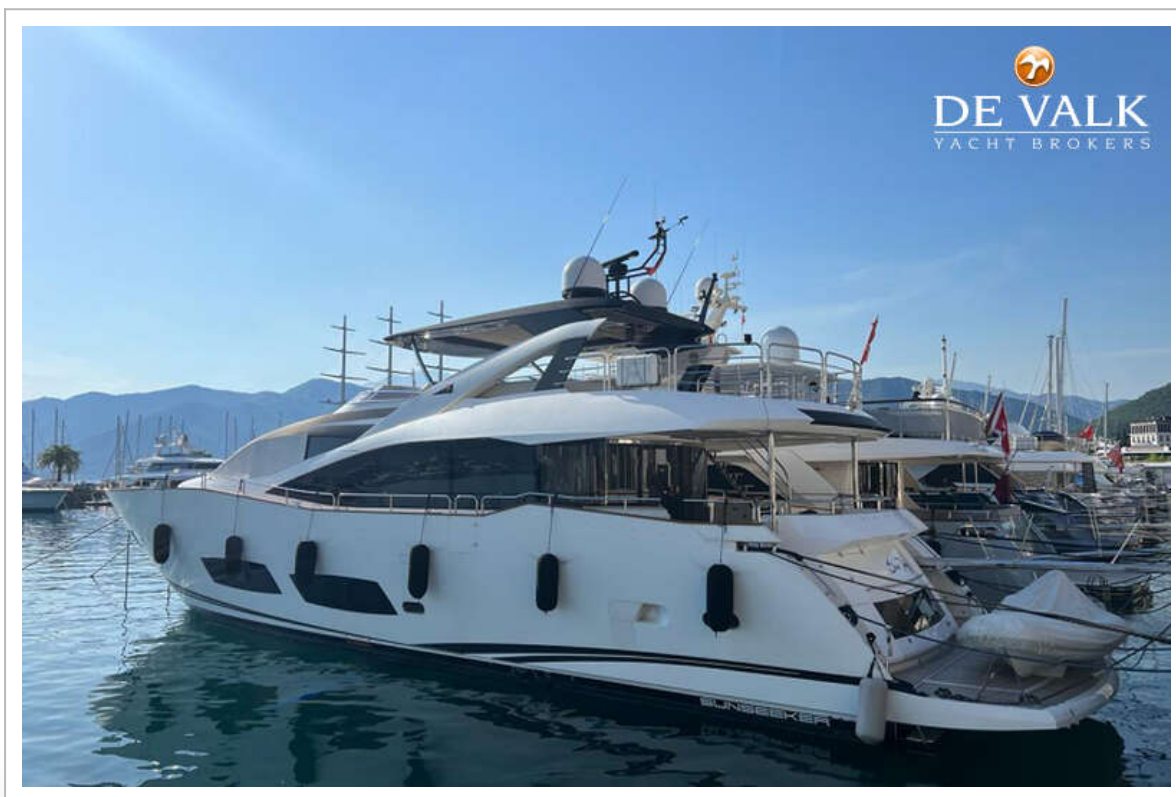
yes

Extra info

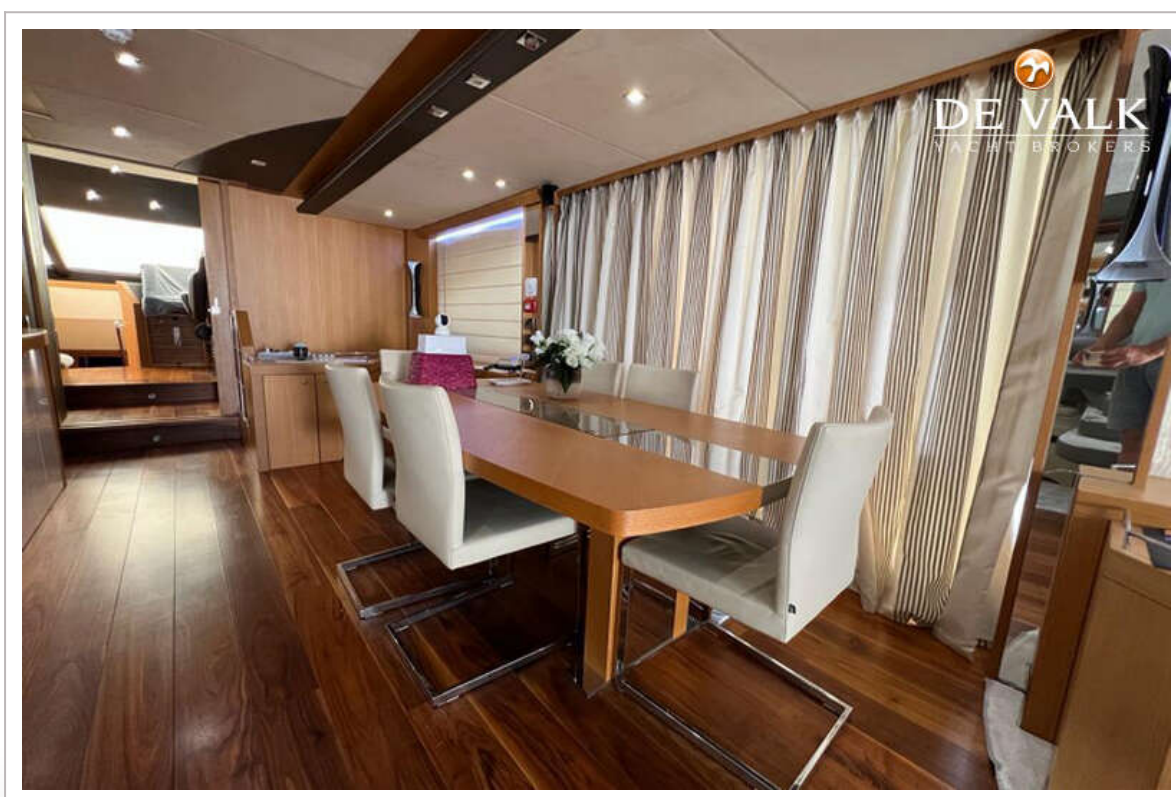
yes



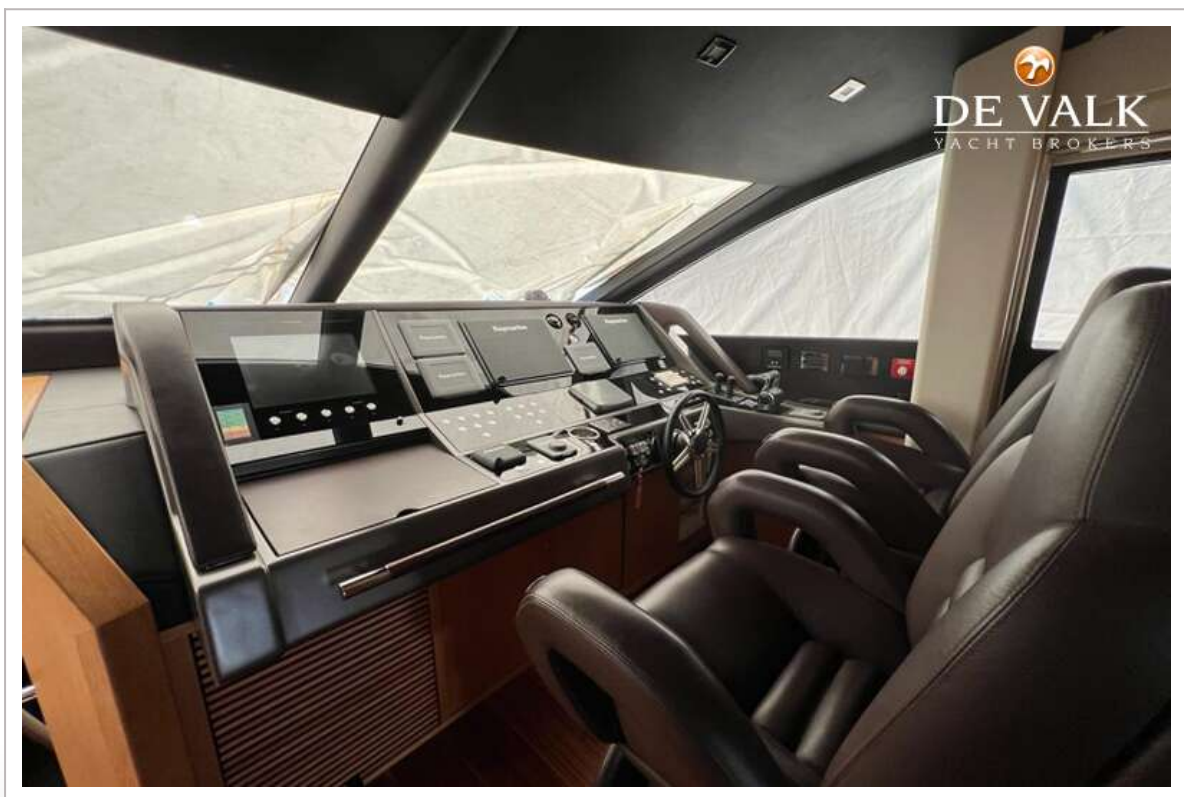
SUNSEEKER 28 M YACHT



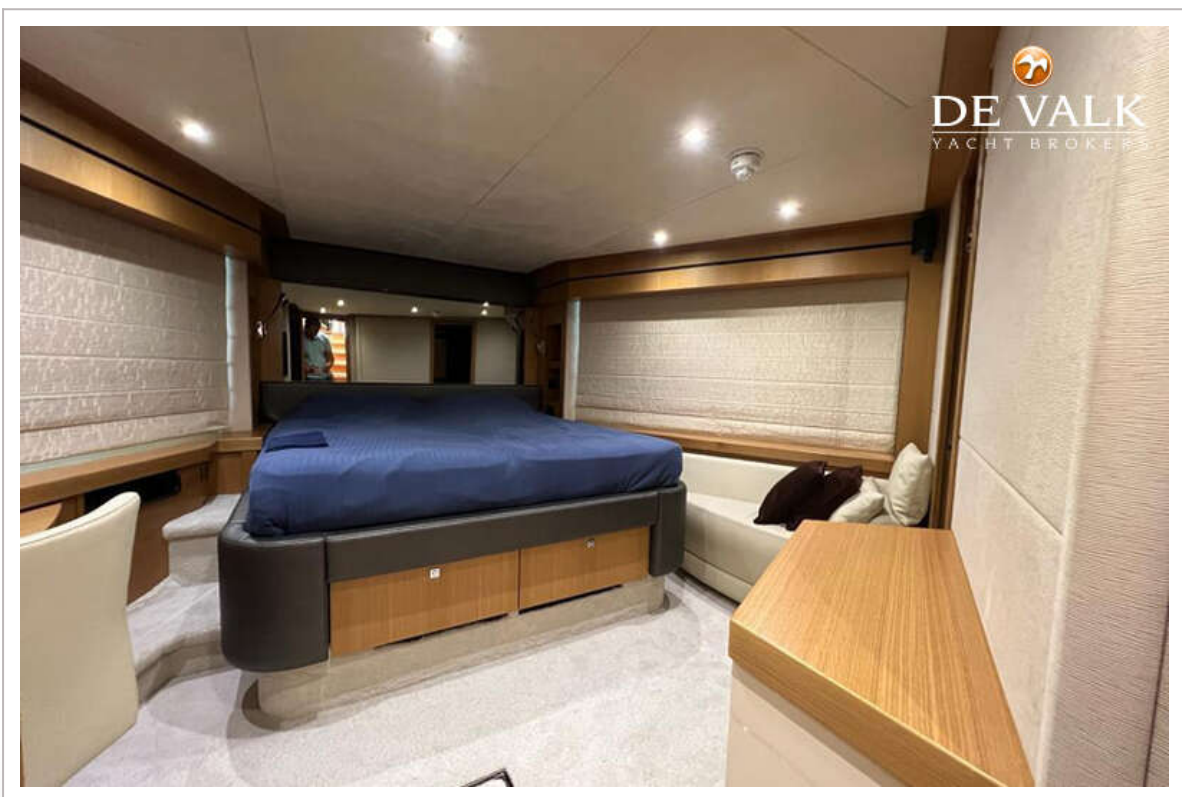
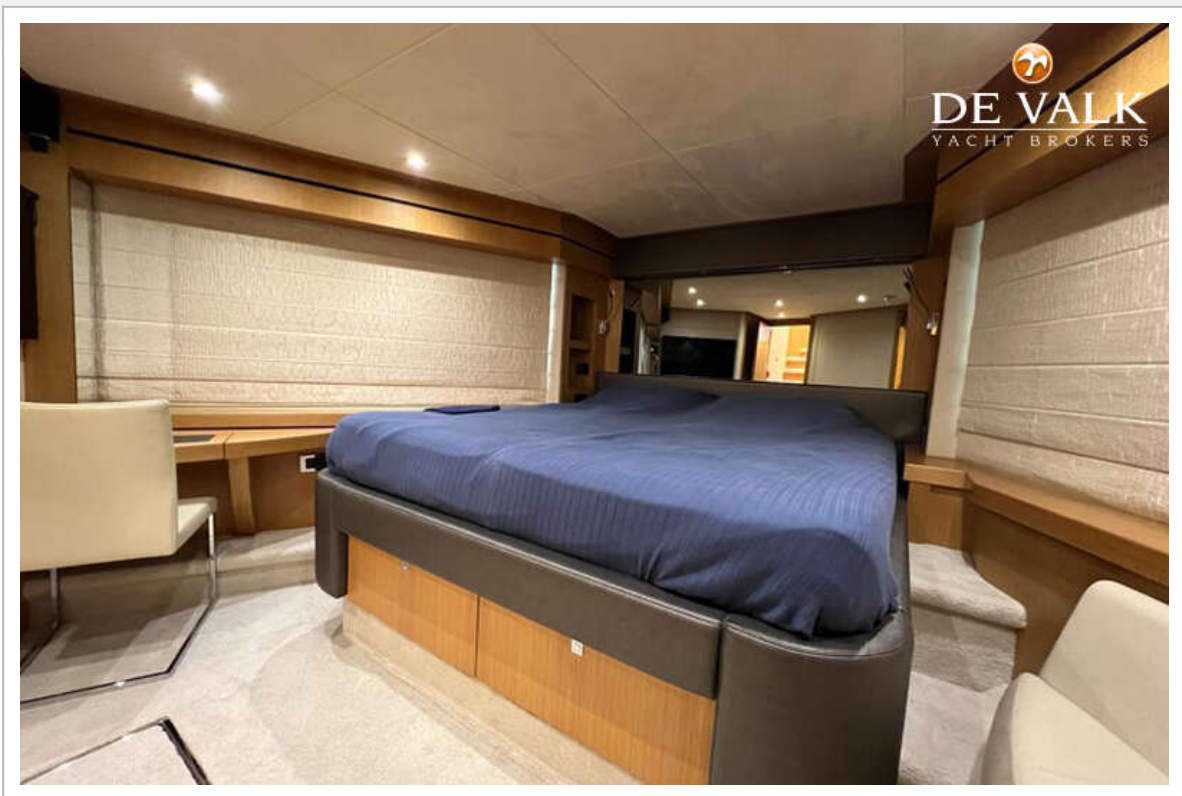
SUNSEEKER 28 M YACHT



SUNSEEKER 28 M YACHT



SUNSEEKER 28 M YACHT



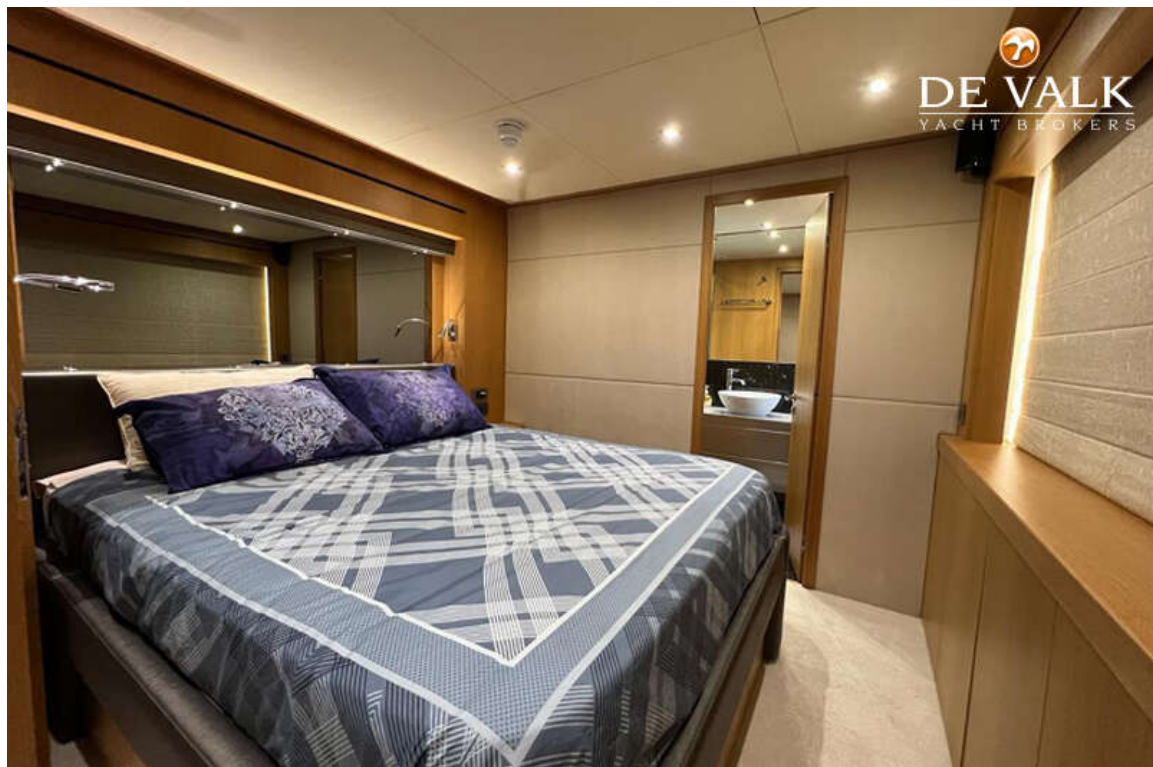
SUNSEEKER 28 M YACHT



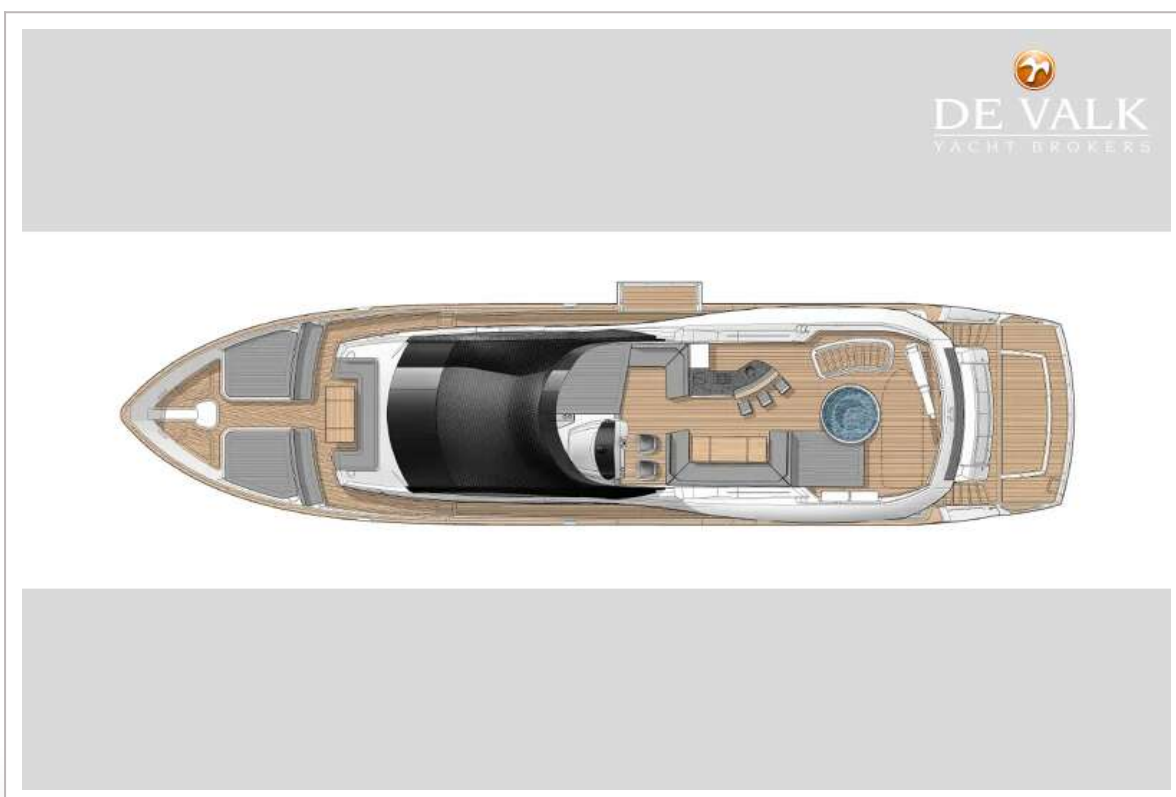
SUNSEEKER 28 M YACHT



SUNSEEKER 28 M YACHT



SUNSEEKER 28 M YACHT



SUNSEEKER 28 M YACHT

