



DE VALK
YACHT BROKERS



JEZEQUEL 45



DE VALK
YACHT BROKERS

JEZEQUEL 45

BROKER'S COMMENTS

The Jezequel 45' Classic is dedicated to owners who believe that true luxury lies in timeless design, intelligent engineering, and authentic sailing pleasure. A yacht for those who seek elegance without compromise. A modern classic, destined to endure.

Nico Stillitano

SPECIFICATIONS

Dimensions	13.50 x 4.20 x 2.70 (m)	Builder	Nautilus Marina of Rome
Built	2022	Cabins	3
Material	GRP	Berths	2
Engine(s)	1 x Volvo Penta D2-75/150-S diesel	Hp/Kw	55.00 (hp), 40.48 (kw)
Asking price	€ 200.000 (VAT Not paid)	Lying	Italy

CONTACT

Sales office	De Valk Rome	Telephone	+39 06 65 81221
Address	c/o Nautilus Marina Srl, Via Monte Cadria, 127 00054 Fiumicino Roma IT	E-mail	rome@devalk.nl

DISCLAIMER

These particulars are given in good faith as supplied but cannot be guaranteed.



GENERAL

Model	JEZEQUEL 45
Type	sailing yacht
LOA (m)	13,50
LWL (m)	13,50
Beam (m)	4,20
Draft (m)	2,70
Year built	2022
Builder	Nautilus Marina of Rome
Country	Italy
Designer	Jezequel-NM yachts-Cossutti
Displacement (t)	14
CE norm	A
Hull material	GRP
Hull colour	white
Keel type	bulb keel
Superstructure material	yes
Deck material	GRP
Deck finish	teak
Cockpit deck finish	teak
Antifouling (year)	2025
Window material	yes
Fuel tank (litre)	polyethylene 250
Freshwater tank (litre)	polyethylene 460
Blackwater tank (litre)	polyethylene 30
Wheel steering	yes

ACCOMMODATION

Cabins	3
Berths	2
Interior	teak



Floor	teak and holly
Heating	Yes
Chart table	Opposite the saloon seating area, the navigation station is generously sized and conceived as a true onboard study: Chart table with dedicated chart storage Full control of onboard electronics Audio system control Comfortable seating for relaxed planning or reading Yes
Dinette	Large sofa, chairs, and solid teak dining table Seating for more than 6 guests White fabric upholstery with blue accents Chairs secured to the floor with custom steel and leather fittings Teak sole with maple inlays Opening portholes and large windows An elegant and comfortable space designed for socializing and relaxation.
Galley	Designed for long-range cruising, the galley features: White Corian countertop Double deep stainless-steel sinks Hot/cold water mixer and seawater tap Stainless-steel three-burner stove with oven Large storage and pantry space Full-height refrigerator with freezer compartment
Sink	corian
Cooker	calor gas
Fridge	N 2
Freezer	Yes
Hot water system	220V + engine
Owners cabin	double bed
Bathroom	en suite
Guest cabin 1	double bed
Bathroom	separate
Guest cabin 2	double bed
Extra info	The interiors have been entirely redesigned, matching the deck's modern philosophy while preserving classic elegance. The use of solid teak throughout creates a warm, refined atmosphere. The new layout allows for: A spacious and elegant main saloon A modern galley along the hull A dedicated technical room Three cabins and two bathrooms All areas are heated via Webasto heating system.



Extra info

The Jezequel 45 Classic offers three beautifully finished cabins and two bathrooms, providing privacy and comfort for both owner and guests. The owner's cabin is serene and welcoming, while guest accommodations maintain the same level of craftsmanship and attention to detail. Every space is designed to feel both luxurious and practical—perfect for life at sea, whether for long voyages or elegant coastal cruising. Designed to Go Further With excellent seaworthiness, smooth motion in rough seas, and impressive upwind performance, the Nautilus Marina 45' Classic is a true blue-water yacht. Powerful yet efficient propulsion, generous tank capacities, and carefully engineered systems ensure autonomy, safety, and peace of mind on extended passages. This yacht is built not only to be admired—but to be sailed, lived in, and trusted.

MACHINERY

No of engines	1
Make	Volvo Penta
Type	D2-75/150-S
HP	55
kW	40.48
Fuel	diesel
Year installed	2021
Consumption (l/hr)	18,7
Engine hours	609
Drive	sail-drive
Bowthruster	electric Craftsman Marine
Propeller type	folding Flex-O-Fold 3-blade
Propeller blades	3
Propeller shaft material	Bronze
Electric bilge pump	Yes
Bowthruster battery	Yes
Battery charger	Yes



Extra info

AGM batteries: 1 x 70 Ah (engine) 2 x 110 Ah (services) Battery charger and battery switches 12V sockets at navigation station 230V AC socket in galley Shore power connection

NAVIGATION

Compass	yes
Multi control display	N 2 Raymarine, one for helm station
Log	yes
Windset	Raymarine
VHF	yes
Autopilot	Raymarine
Plotter/GPS	2 Raymarine Axiom 9" GPS plotters (one per helm)

EQUIPMENT

Sprayhood	yes
Bimini	yes
Cockpit table	concealed cockpit table
Bow ladder	yes
Deck shower	yes
Anchor	yes
Anchor chain	yes
Chain counter	yes
Windlass	electrical
Radar reflector	yes
Fenders	yes
Mooring lines	yes

RIGGING

Rigging	sloop
Standing rigging	wire
Brand mast	Seldén



Material mast	aluminium
Mainsail	NorthSails
Stoway mast	yes
Genoa	NorthSails
Genoa furler	yes
Cutter furler	yes
Code Zero	yes
Backstay adjuster	mechanical
Boomvang	gasspring
Primary sheet winch	2 Andersen 46 stainless-steel winches
Secondary sheet winch	2 Andersen 52 stainless-steel winches
Extra info	<p>All deck equipment is modern, simplified, and largely automated: Selden aluminum mast with electric in-mast furling Selden electric furling headsail Selden Rodkicker rigid vang (30) Integrated bowsprit with anchor roller Furlex furler for Code 0 Code 0 always rigged 2 genoa tracks 2 Andersen 46 stainless-steel winches (primary) 2 Andersen 52 stainless-steel winches (sheets) Dedicated control panels on modern helm pedestals Craftsman Marine bow thruster Windlass control at helm station</p>
Extra info	<p>The deck layout has been completely redesigned to enhance space, light, and connection with the sea. The open stern and twin helm stations dramatically transform the cockpit, offering superior ergonomics, safety, and ease of movement. A concealed cockpit table, generous sunbathing areas at both bow and stern, and wide, secure walkways create an inviting outdoor environment designed for both relaxation and effortless sailing. All deck operations are simplified and automated, allowing the yacht to be managed with ease—whether sailing short-handed or enjoying a leisurely cruise.</p>



JEZEQUEL 45



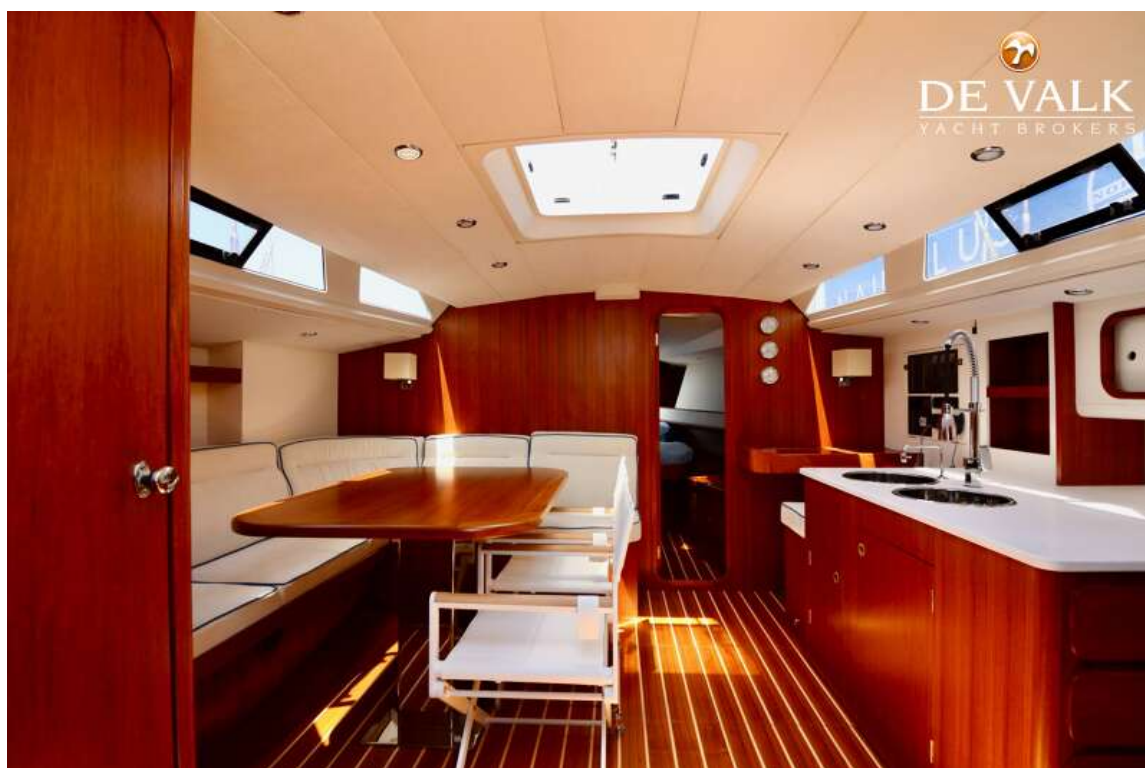
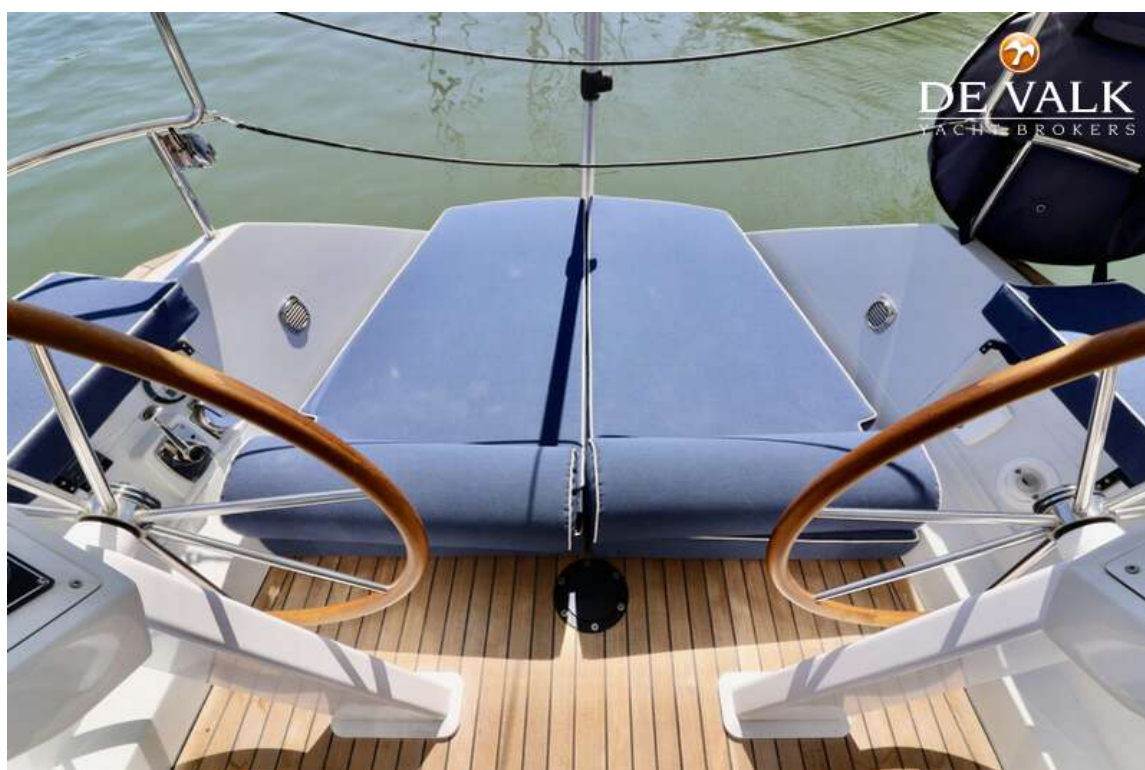
JEZEQUEL 45



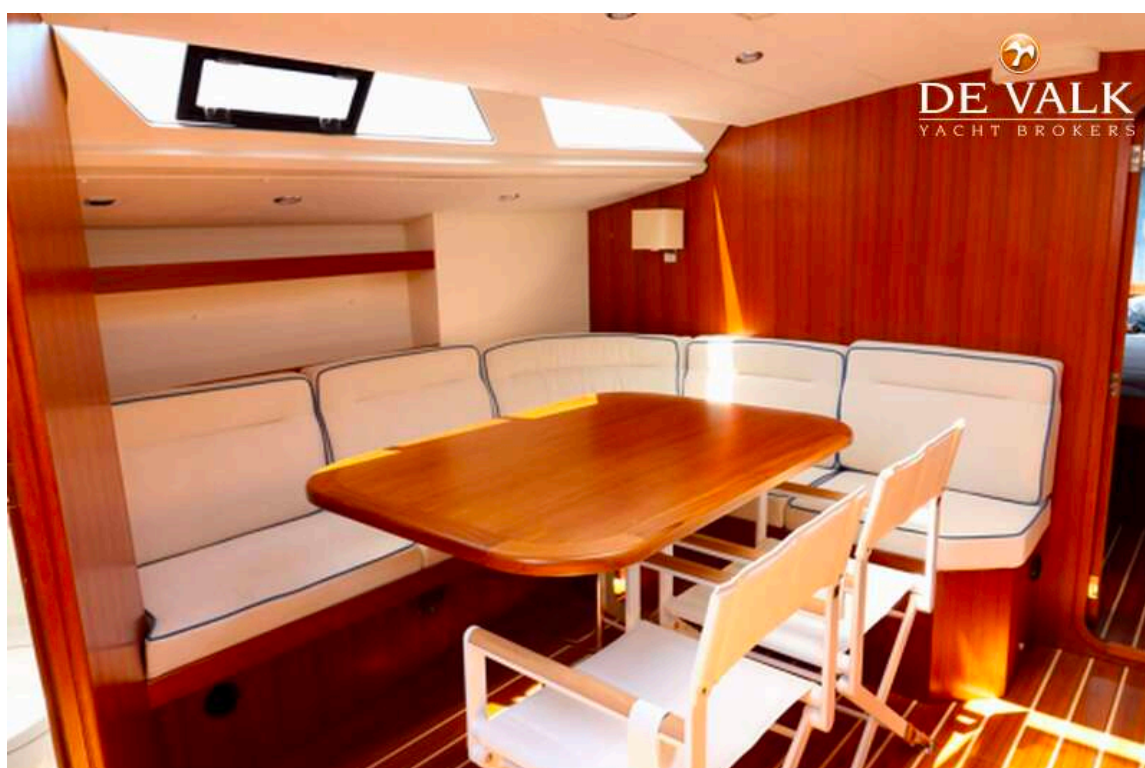
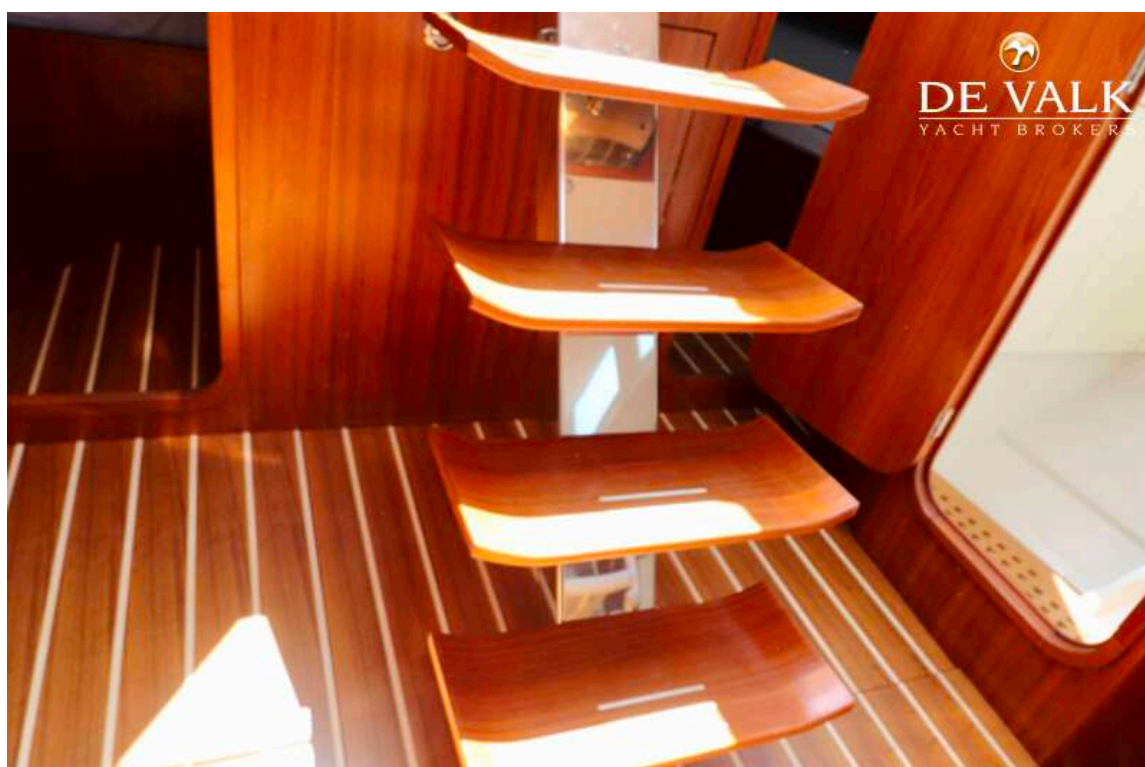
JEZEQUEL 45



JEZEQUEL 45



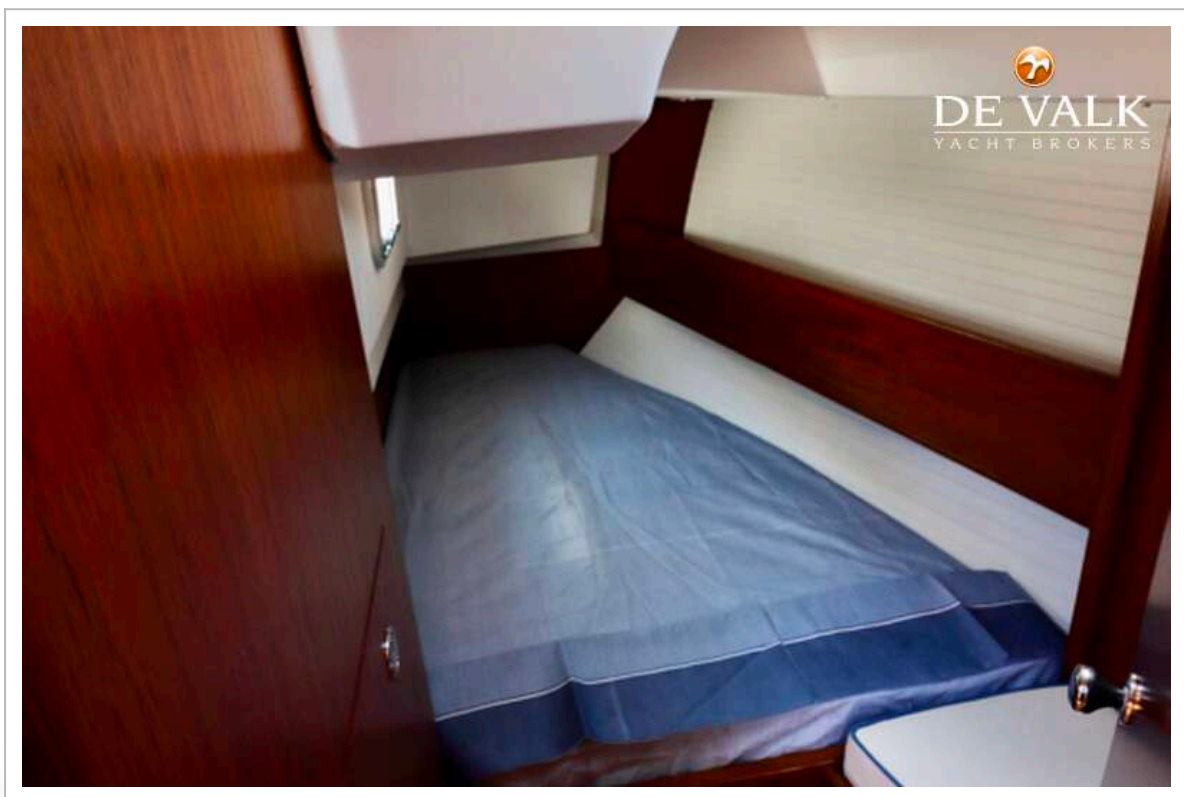
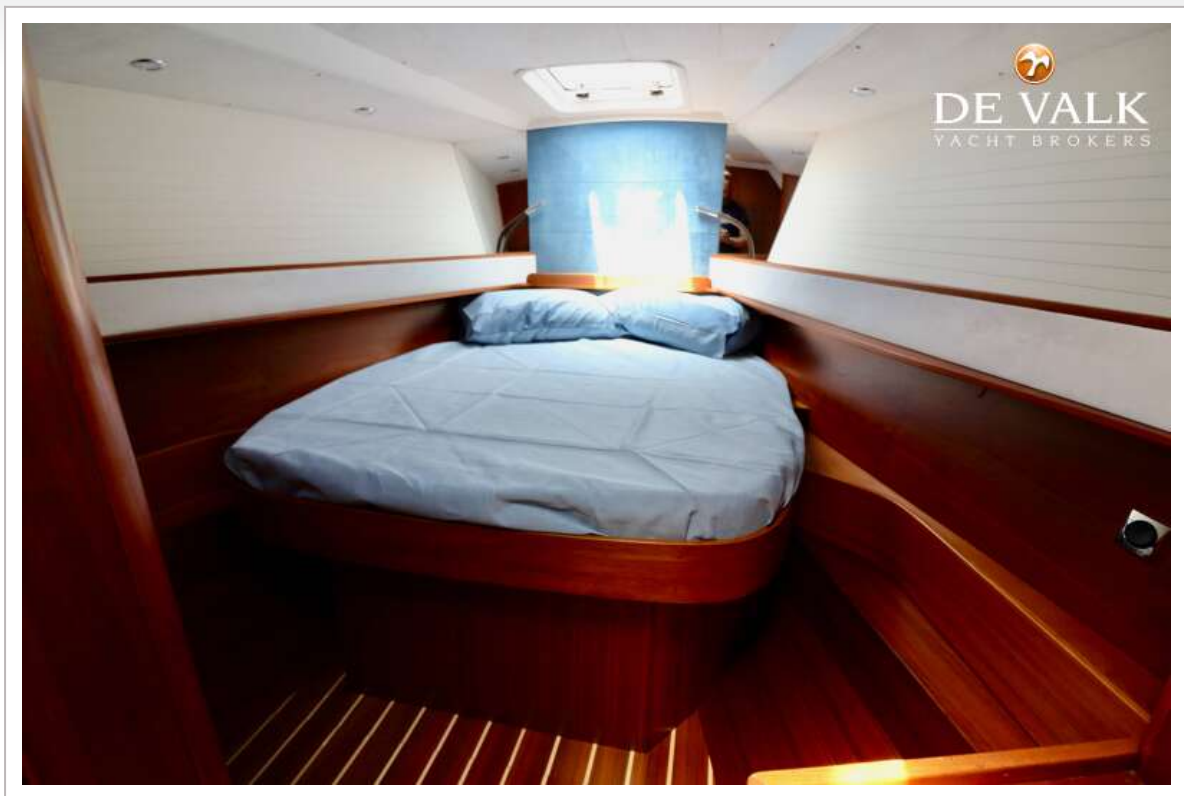
JEZEQUEL 45



JEZEQUEL 45



JEZEQUEL 45



JEZEQUEL 45

