



VALK VITESSE 59

# VALK VITESSE 59

## BROKER'S COMMENTS

The Valk Vitesse 59 from 1993 is a vessel offering space and comfort. This robust yacht is renowned for its excellent handling characteristics. The Valk Vitesse 59 features three spacious cabins, making her ideally suited for extended stays on board with family or guests. The comfortable flybridge provides beautiful views and additional living space while cruising or relaxing in the marina. Thanks to the central heating, the vessel can be enjoyed comfortably throughout the year, regardless of the season. The CVO certificate is valid until 2031. This yacht needs some attention.

*Mark Hesselmans*

## SPECIFICATIONS

<b>Dimensions</b>	18.50 x 5.40 x 1.40 (m)	<b>Builder</b>	Wim v/d Valk
<b>Built</b>	1993	<b>Cabins</b>	3
<b>Material</b>	Steel	<b>Berths</b>	6
<b>Engine(s)</b>	2 x MAN D2848 LXE diesel	<b>Hp/Kw</b>	2 x 680.00 (hp), 500.48 (kw)
<b>Asking price</b>	Under Offer (VAT )	<b>Lying</b>	at sales office

## CONTACT

<b>Sales office</b>	De Valk Loosdrecht B.V.	<b>Telephone</b>	+31 (0)35 582 90 30
<b>Address</b>	't Breukeleveense Meentje 6 1231LM Loosdrecht / Wijdmeren NL	<b>E-mail</b>	loosdrecht@devalk.nl

## DISCLAIMER

These particulars are given in good faith as supplied but cannot be guaranteed.



## GENERAL

<b>Model</b>	VALK VITESSE 59
<b>Type</b>	motor yacht
<b>LOA (m)</b>	18,50
<b>Beam (m)</b>	5,40
<b>Draft (m)</b>	1,40
<b>Headroom (m)</b>	2,05
<b>Year built</b>	1993
<b>Builder</b>	Wim v/d Valk
<b>Country</b>	The Netherlands
<b>CE norm</b>	NA
<b>Hull material</b>	steel
<b>Hull colour</b>	white
<b>Hull shape</b>	hard chine
<b>Superstructure material</b>	aluminium
<b>Rubbing strake</b>	stainless steel
<b>Deck material</b>	steel
<b>Deck finish</b>	teak
<b>Superstructure deck finish</b>	teak
<b>Cockpit deck finish</b>	teak
<b>Window frame</b>	aluminium
<b>Window material</b>	double glazing
<b>Deckhatch</b>	yes
<b>Portholes</b>	aluminium
<b>Insulation</b>	yes
<b>Radar arch</b>	collapsible
<b>Fuel tank (litre)</b>	steel 5000
<b>Freshwater tank (litre)</b>	2000
<b>Level indicator (freshwater)</b>	yes
<b>Blackwater tank (litre)</b>	2x
<b>Wheel steering</b>	hydraulic



Inside helm position	yes
Outside helm position	yes
Flybridge helm position	hydraulic
Extra info	CVO certification valid till February 2031
Extra info	In 2012, both the exterior and the technical systems underwent a refit.

## ACCOMMODATION

Cabins	3
Berths	6
Interior	yes
Floor	carpet
Aft deck	yes
Deck saloon	yes
Saloon	yes
Heating	central heating Kabola (2015)
Heating 2	diesel ducted hot air Eberspächer
Air-conditioning	yes
Chart table	yes
Dinette	yes
Sliding door to aft deck	yes
Galley	yes
Countertop	plastic
Sink	stainless steel
Cooker	induction
Oven	yes
Microwave/oven combi	Siemens
Fridge	2x Dometic
Hot water system	on central heating
Water pressure system	electrical
Owners cabin	French bed



Wardrobe	hanging/drawers/shelves
Bathroom	en suite
Toilet	en suite
Toilet system	electric
Wash basin	in the bathroom
Shower	en suite
Guest cabin 1	French bed
Wardrobe	hanging/drawers/shelves
Bathroom	shared
Toilet	shared
Toilet system	electric
Wash basin	in the bathroom
Shower	shared
Extra info	Front windows are leaking
Guest cabin 2	double bed
Wardrobe	shelves
Washing machine/dryer combi	Miele

## MACHINERY

No of engines	2
Make	MAN
Type	D2848 LXE
HP	680
kW	500.48
Fuel	diesel
Engine cooling system	freshwater heat exchanger
Drive	shaft
Shaft seal	yes
Engine controls	electrical
Gearbox	hydraulic Twin Disc
Engine controls	electrical



# VALK VITESSE 59

<b>Bowthruster</b>	hydraulic
<b>Sternthruster</b>	hydraulic
<b>Exhaust</b>	watercooled
<b>Propeller type</b>	fixed
<b>Propeller shaft material</b>	stainless steel
<b>Electric bilge pump</b>	yes
<b>Generator</b>	Onan 12.0 GenSet
<b>Running hours generator</b>	1176
<b>Batteries</b>	yes
<b>Start battery</b>	yes
<b>Service battery</b>	yes
<b>Generator battery</b>	yes
<b>Battery monitor</b>	Victron
<b>Battery charger/inverter</b>	Victron Quattro 24V 3000W
<b>Shorepower</b>	with cable

## NAVIGATION

<b>Electric compass</b>	Raymarine Autopilot
<b>Depth sounder</b>	Raymarine ST40
<b>Log</b>	Raymarine ST40
<b>Windset</b>	Raymarine ST40
<b>VHF</b>	Simrad RS87
<b>Autopilot</b>	Raymarine
<b>Rudder angle indicator</b>	Raymarine Autopilot display
<b>Plotter/GPS</b>	Raymarine C120 w
<b>Navtex</b>	Furuno NX-300
<b>AIS transceiver</b>	Em-trak A100
<b>Navigation lights</b>	yes
<b>Loudhailer</b>	yes

## EQUIPMENT



Cockpit cushions	yes
Cockpit table	yes
Cockpit chairs	yes
Bathing platform	yes
Boarding ladder	stainless steel
Transom door	yes
Anchor	yes
Anchor chain	yes
Windlass	Muick
Deck crane	yes
Sea railing	stainless steel
Railing side opening gates	yes
Wiper	yes
Horn	yes
Fenders	yes
Mooring lines	yes
TV	Samsung
Radio-cd player	yes
Speakers in salon	yes



VALK VITESSE 59



VALK VITESSE 59



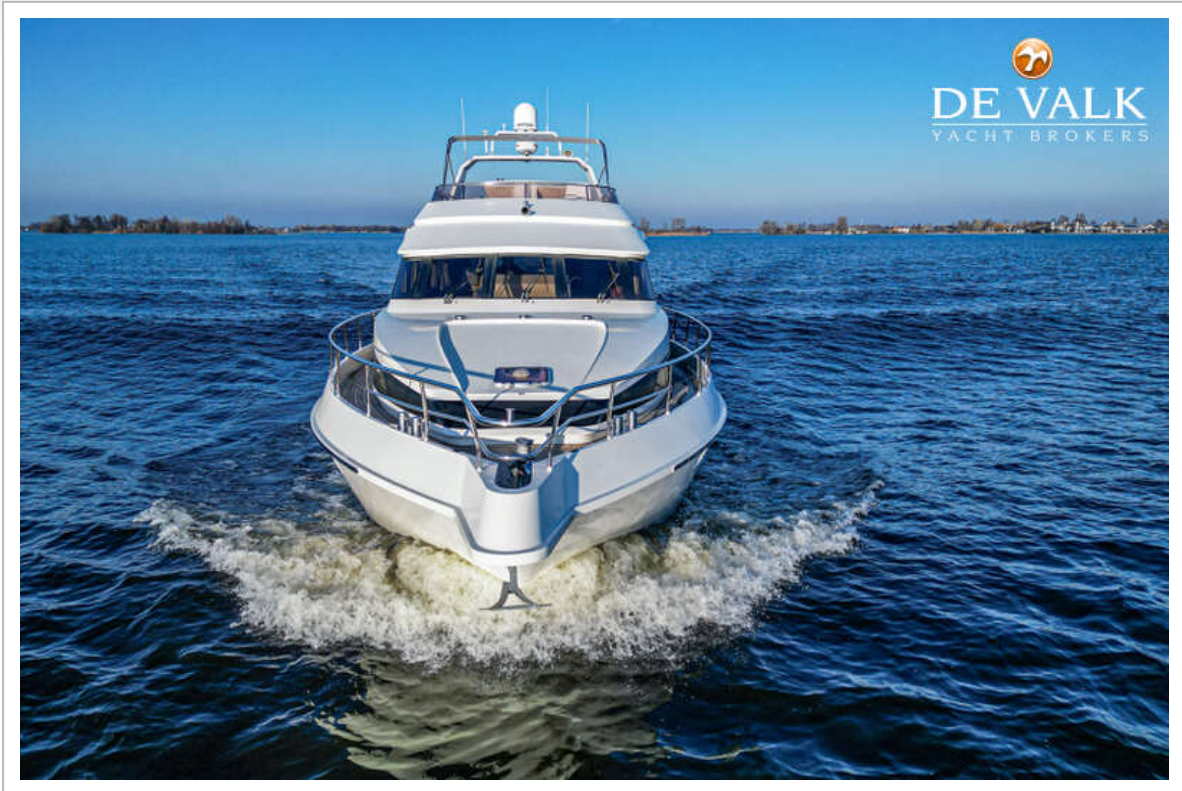
VALK VITESSE 59



VALK VITESSE 59



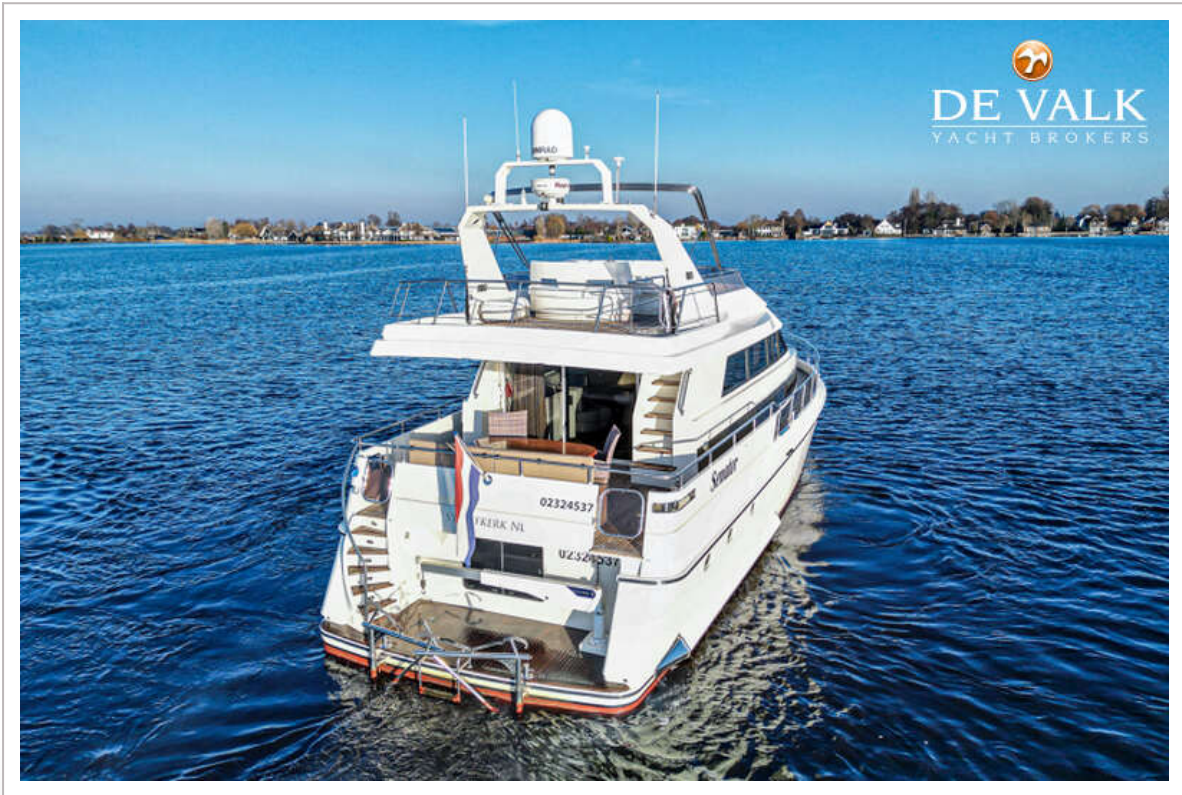
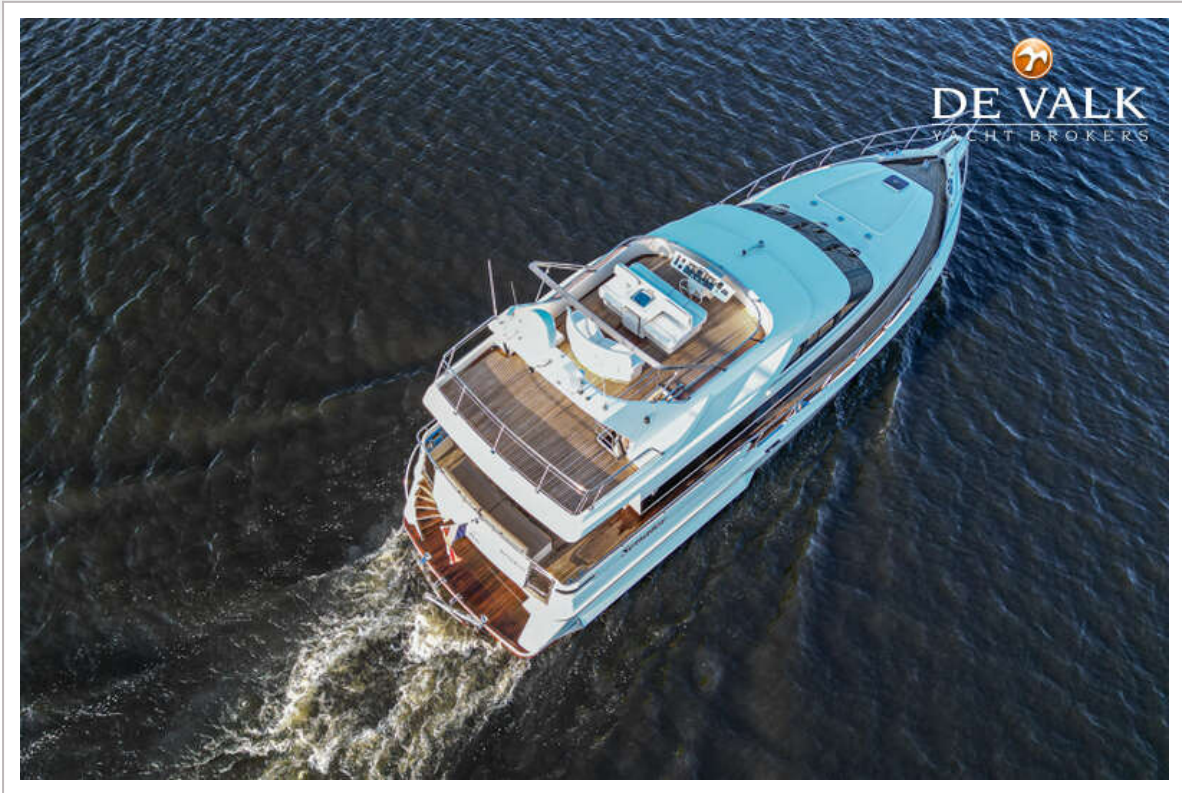
VALK VITESSE 59



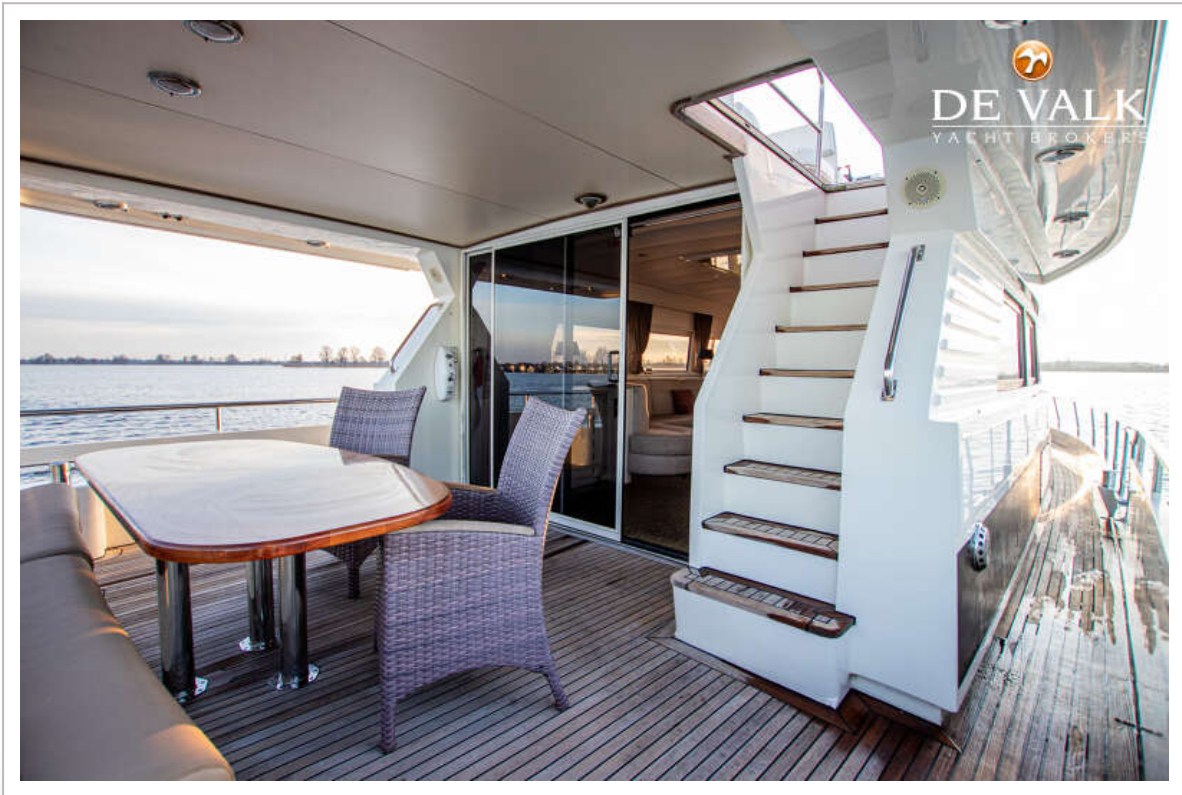
VALK VITESSE 59



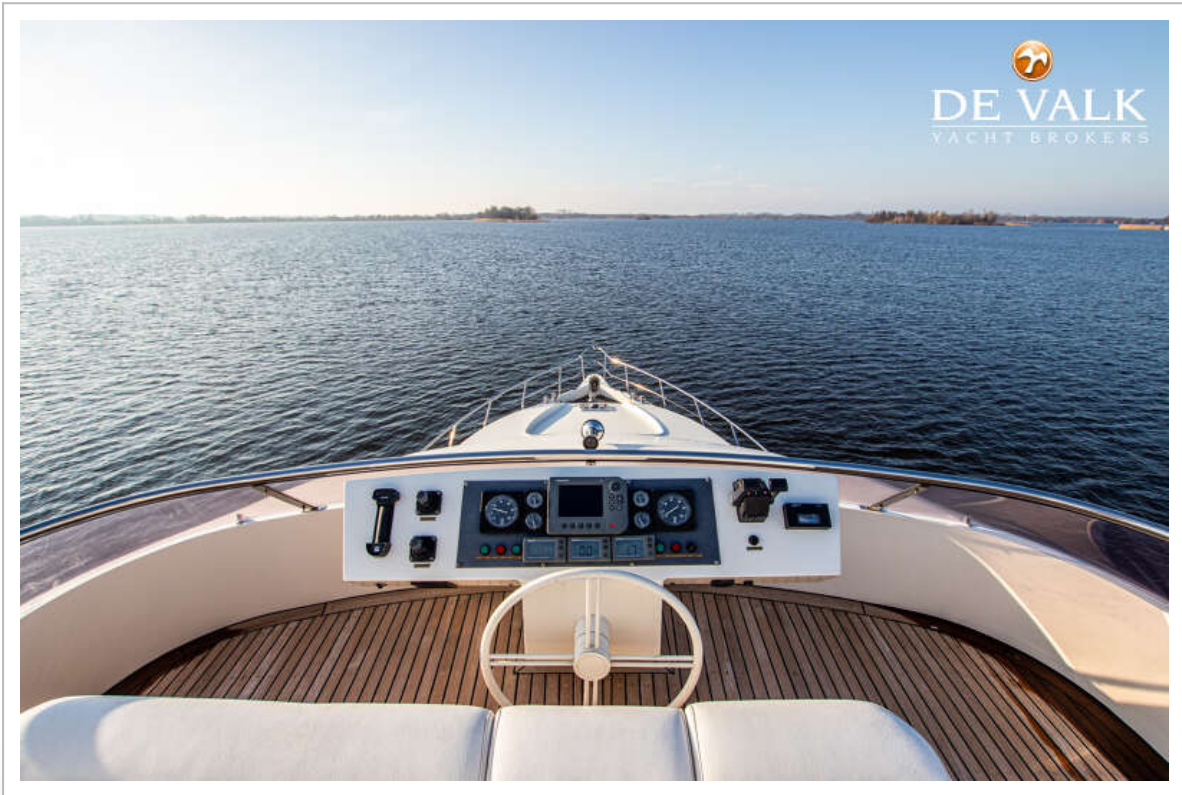
VALK VITESSE 59



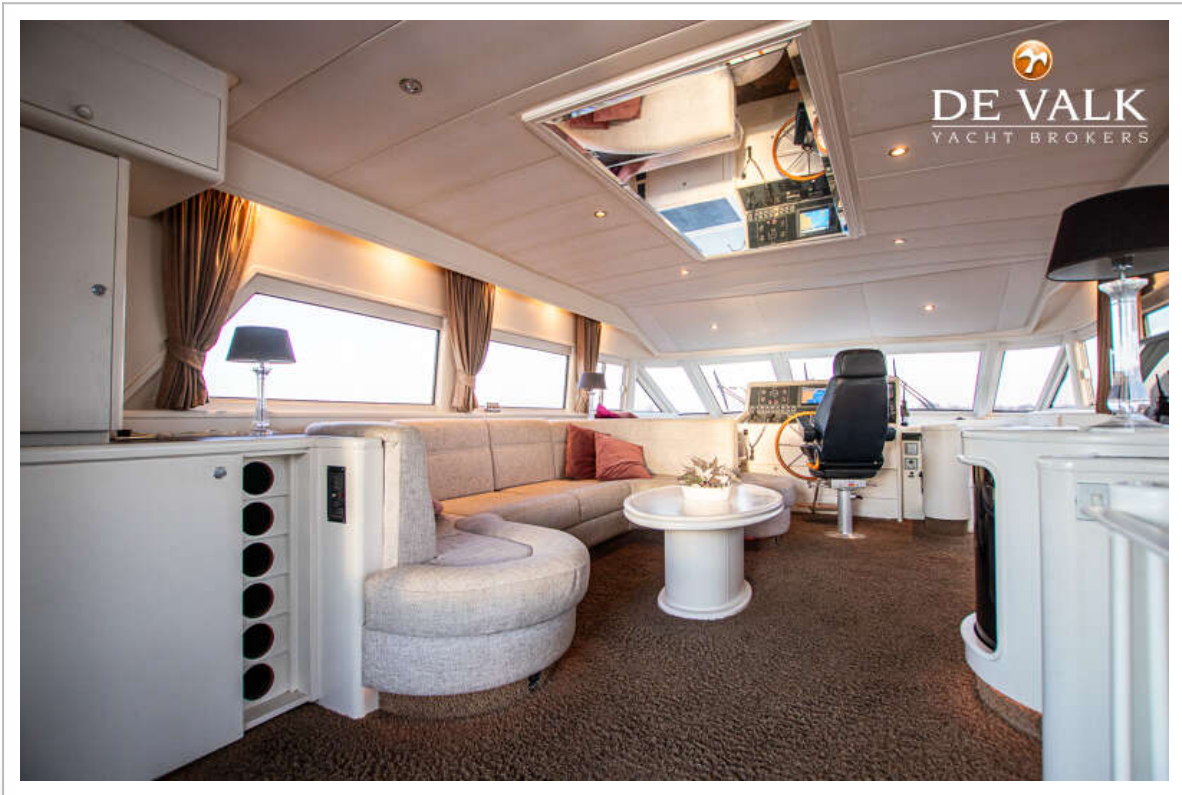
VALK VITESSE 59



VALK VITESSE 59



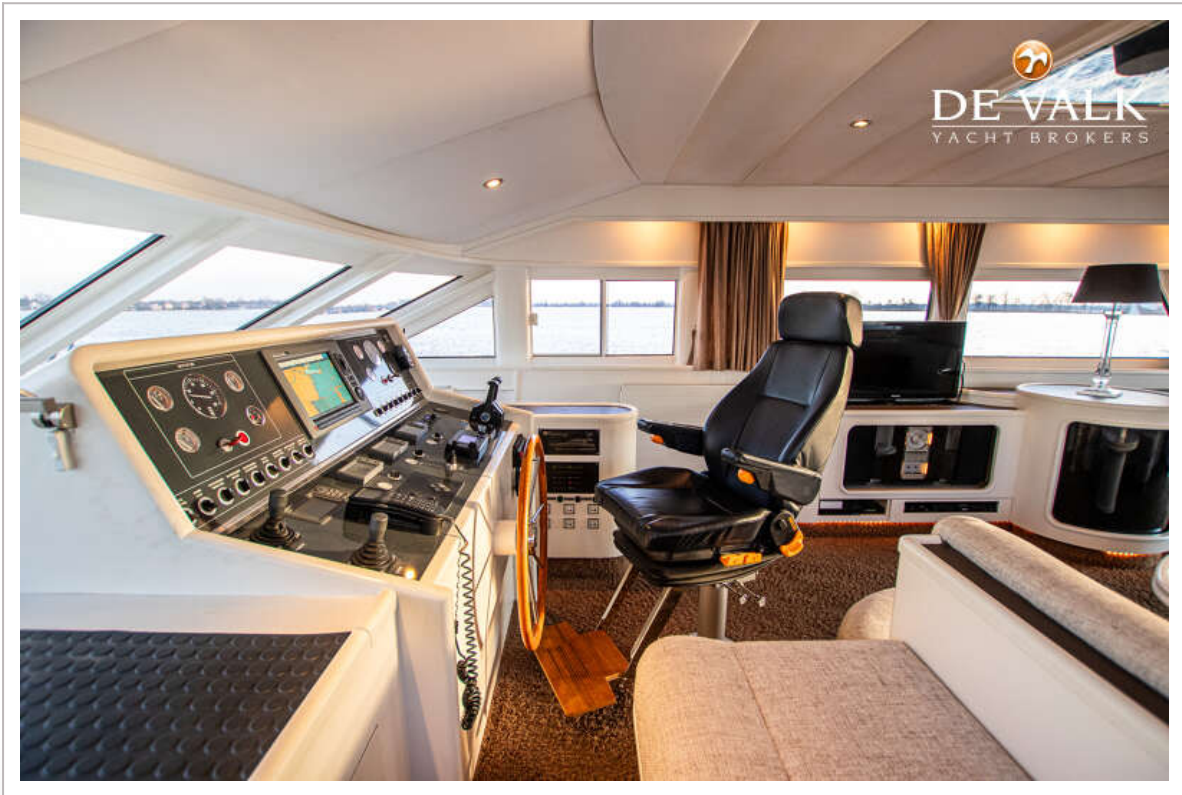
VALK VITESSE 59



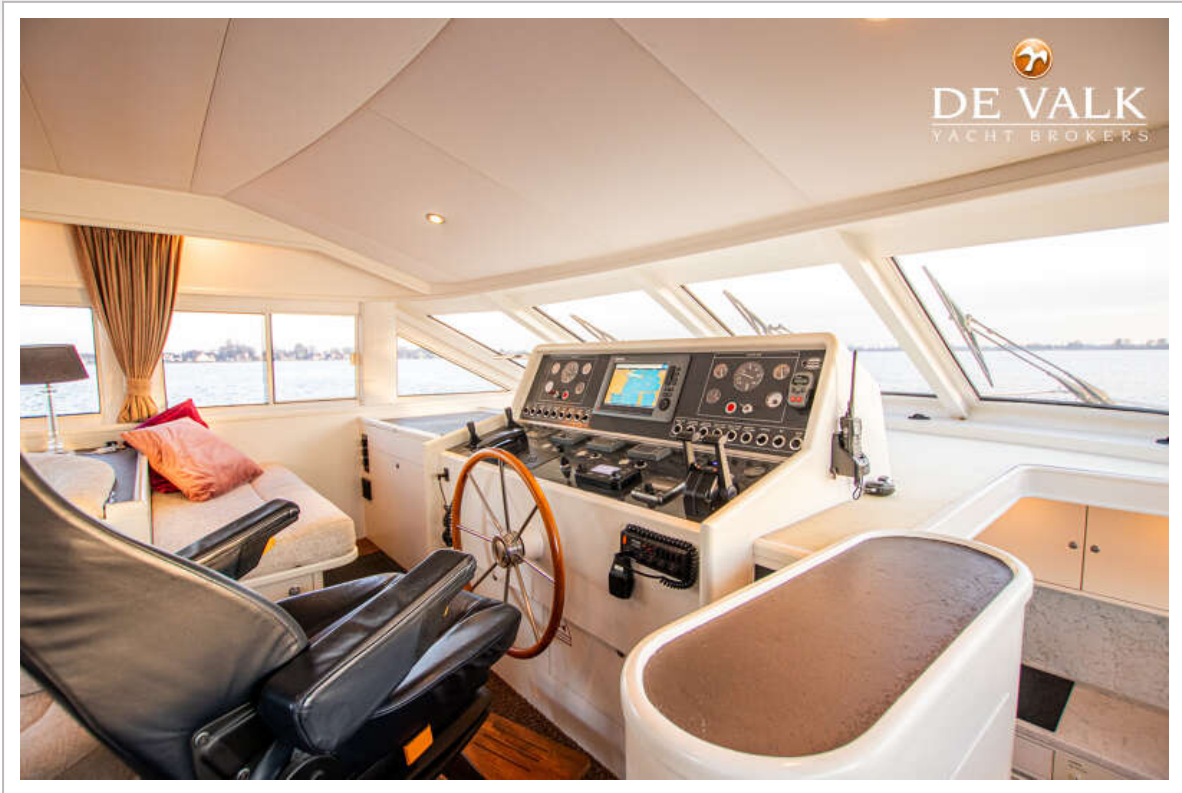
VALK VITESSE 59



VALK VITESSE 59



VALK VITESSE 59



VALK VITESSE 59



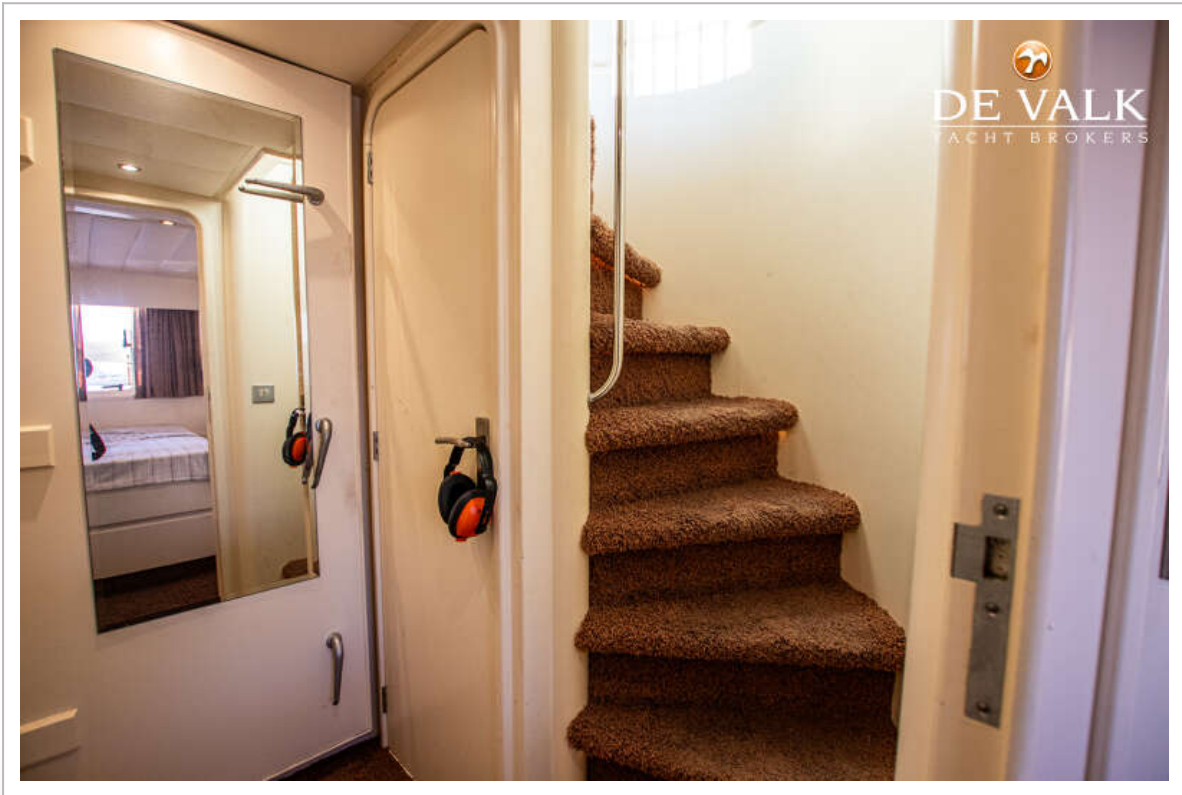
VALK VITESSE 59



VALK VITESSE 59



VALK VITESSE 59



VALK VITESSE 59



