



DE VALK
YACHT BROKERS



NOORDKAPER 31 MS



DE VALK
YACHT BROKERS

BROKERAGE | CHARTER | BERTHS | FINANCE | INSURANCE | YACHT MANAGEMENT

BROKER'S COMMENTS

Experience the unique Noordkaper 31 Motorsailor – the classic hull with centerboard with a stylish wheelhouse and inside/outside steering. Roller sails, furling mainsail, and collapsible mast make sailing effortless. Inside, enjoy an owner's cabin, guest cabin, shower/toilet, and kitchen with dining area. Bow thruster, autopilot, heating, and hot/cold water. Very lightly used (~200 engine hours) and in excellent condition.

Reinier van der Wolf

SPECIFICATIONS

Dimensions	10.50 x 3.45 x 0.70 (m)	Builder	DTB-Turkey NAZ-Yachts
Built	2021	Cabins	2
Material	GRP	Berths	4
Engine(s)	1 x Nanni diesel	Hp/Kw	40.00 (hp), 29.44 (kw)
Asking price	€ 158.000 (VAT Not paid)	Lying	elsewhere / Not at sales office

CONTACT

Sales office	De Valk Monnickendam B.V.	Telephone	+31 (0)299 65 63 50
Address	Hoogedijk 6 1145 PM Katwoude NL	E-mail	monnickendam@devalk.nl

DISCLAIMER

These particulars are given in good faith as supplied but cannot be guaranteed.



GENERAL

Model	NOORDKAPER 31 MS
Type	motorsailer
LOA (m)	10,50
LWL (m)	9,40
Beam (m)	3,45
Draft (m)	0,70
Headroom (m)	1,95
Year built	2021
Builder	DTB-Turkey NAZ-Yachts
Country	The Netherlands
Designer	Martin Bekebrede
Displacement (t)	6,5
Ballast (tonnes)	Steel pellets in bilge imbedded in GRP
CE norm	B
Hull material	GRP
Hull colour	Nightblue
Hull shape	round-bilged
Keel type	centreboard steel with stainless steel bearings and bushing
Superstructure material	GRP
Rubbing strake	stainless steel
Deck material	GRP
Deck finish	non-skid moulded in
Superstructure deck finish	paint flexi teak front part
Cockpit deck finish	Flexi teak
Deckhatch	aluminium acrylic smoke glass
Portholes	yes
Insulation	Poly-urethane sheets (hull)
Mast can be lowered	yes
Fuel tank (litre)	150
Level indicator (fuel tank)	yes



Freshwater tank (litre)	260
Level indicator (freshwater)	yes
Blackwater tank (litre)	65
Blackwater tank extraction	deck extraction + uw line
Wheel steering	hydraulic
Inside helm position	yes
Tiller	outside helm position
More info on hull	treated with gelshieldcoat epoxy finished with International antifouling
Extra info	centerboard handhydraulic system for lifting incl. level indicator

ACCOMMODATION

Cabins	2
Berths	4
Interior	mahogany
Floor	wood iroco on plywood
Pilot house	yes
Saloon	yes
Headroom saloon (m)	1.91 - 1.94
Heating	diesel ducted hot air Eberspächer D4
Aft Cabin	yes
Galley	yes
Countertop	wood
Sink	stainless steel
Cooker	calor gas 2 burner-pits-Flammen
Oven	yes
Fridge	toploading compressor coolbox 60L.
Hot water system	220V + engine boiler 309 l.
Water pressure system	electrical
Owners cabin	double bed front - voor - Forne
Bed length (m)	2,03 x 0,93



Wardrobe	hanging and shelves
Bathroom	shared
Toilet	shared
Wash basin	at the toilet
Shower	shared
Guest cabin 1	double bed aft - achter - Hinten
Bed length (m)	1,98 x 1,20
Extra info	LED lighting

MACHINERY

No of engines	1
Make	Nanni
HP	40
kW	29.44
Fuel	diesel
Year installed	2021
Engine hours	+/- 200
Engine cooling system	freshwater heat exchanger
Gearbox	yes
Engine controls	bowden cable Morse
Bowthruster	electric 40/48 kgf
Exhaust	watercooled
Propeller type	fixed brass
Propeller blades	3x
Propeller shaft material	stainless steel
Manual bilge pump	1x
Electric bilge pump	1x
Electrical installation	12 v.
Start battery	1x 65 Ah
Service battery	1x 180 Ah
Battery charger	20 Amp



Shorepower	with cable
Extra info	engine room sound proofed

NAVIGATION

Compass	yes
Depth sounder	B&G
Log	B&G
VHF	B&G
Autopilot	hydraulic pump B&G Powerpack
Plotter/GPS	B&G 7" touchscreen

EQUIPMENT

Bimini	yes
Cockpit table	on stainless arm
Bathing platform	around the rudder
Boarding ladder	stainless steel integrated in platform
Bow ladder	integrated in bowsprit
Anchor	M-anchor (galvanized) 10 kg
Anchor chain	yes
Windlass	electrical
Sea railing	stainless steel
Grab rail (superstructure)	stainless steel
Pushpit	yes
Pulpit	with two seats
Fenders	4x
Mooring lines	3x
Radio	CD USB Bluetooth
Speakers in salon	2x
Fire extinguisher	foam and powder 2x



RIGGING

Rigging	Toprigg
Standing rigging	wire
Brand mast	VGM NF270
Material mast	aluminium
Mast lowering system	yes
Mainsail	2 reef (19m2)
Furling boom	M-sails 'easy roll'
Jib	with UV-striping + beige Untech Classic 758 10m2
Genoa	with UV-striping 25m2
Genoa furler	yes
Genoa cover	beige Untech Classic 758
Cutter furler	yes
Reefing System	main in-boom furling
Secondary sheet winch	2x ST20 chrome
Genoa sheetwinches	with stainless steel seats 2x ST35.2 chrome



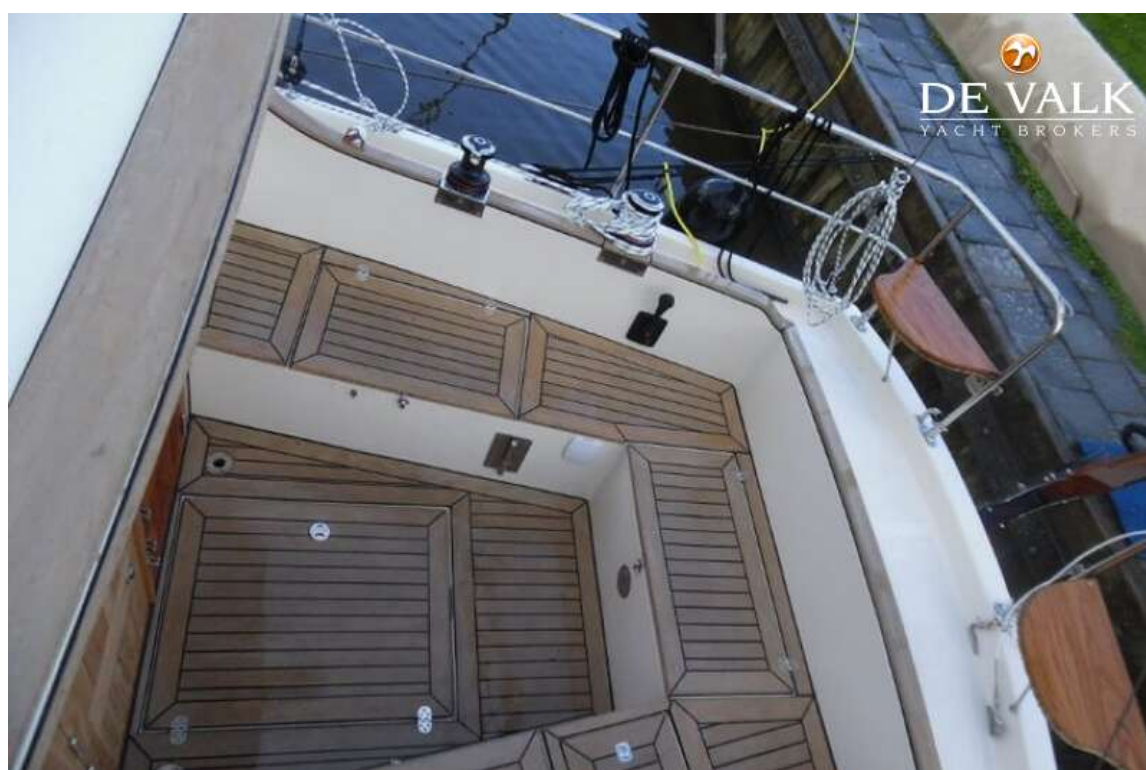
NOORDKAPER 31 MS



NOORDKAPER 31 MS

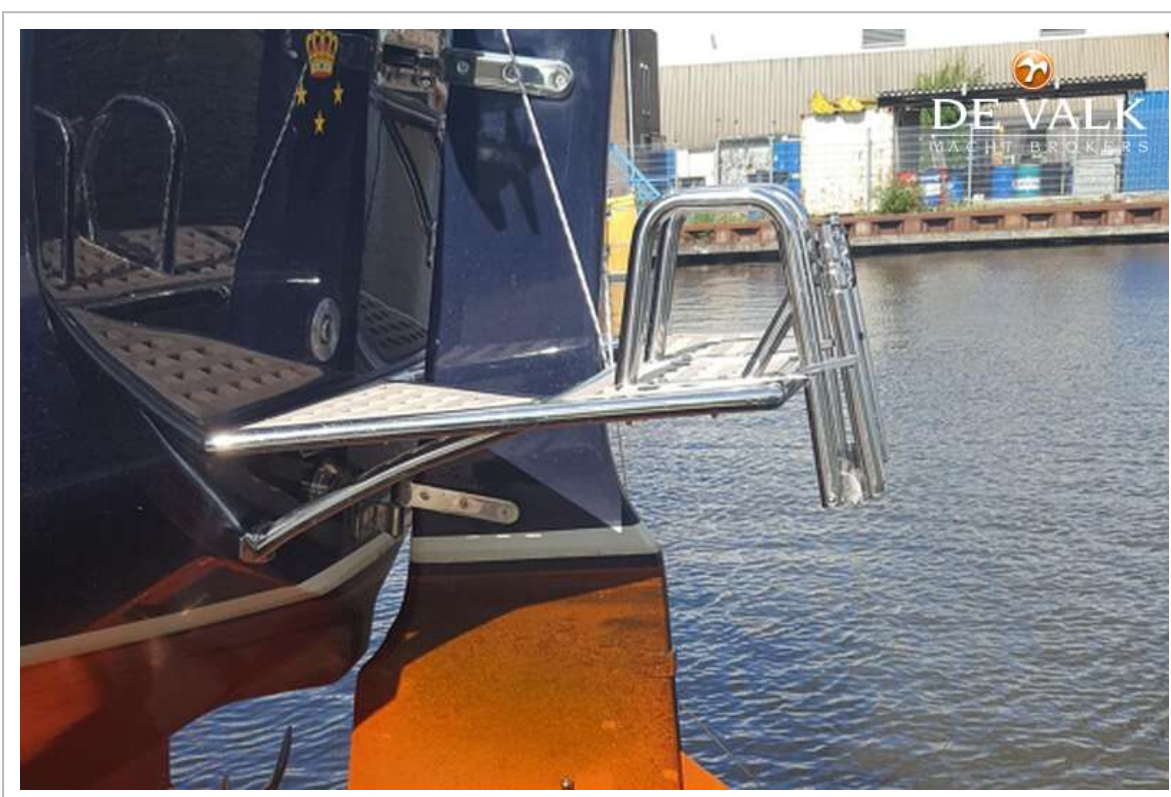


NOORDKAPER 31 MS



NOORDKAPER 31 MS





NOORDKAPER 31 MS



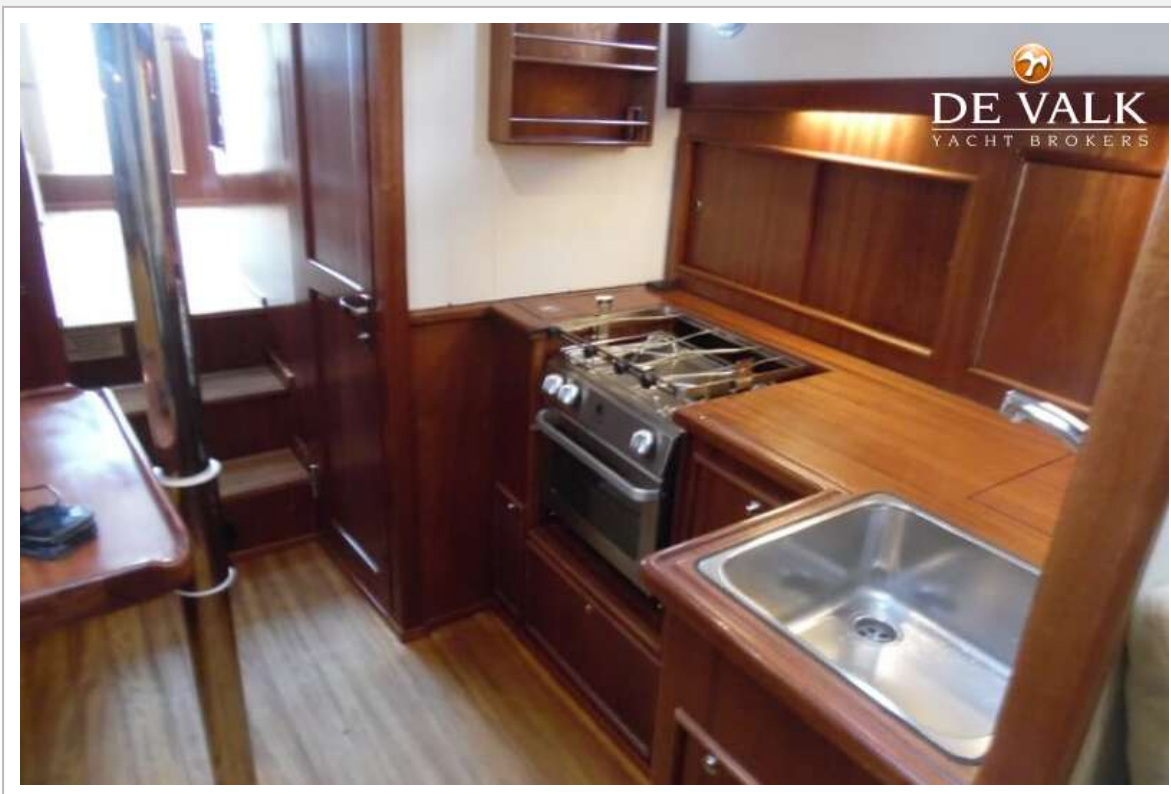
NOORDKAPER 31 MS



NOORDKAPER 31 MS



NOORDKAPER 31 MS



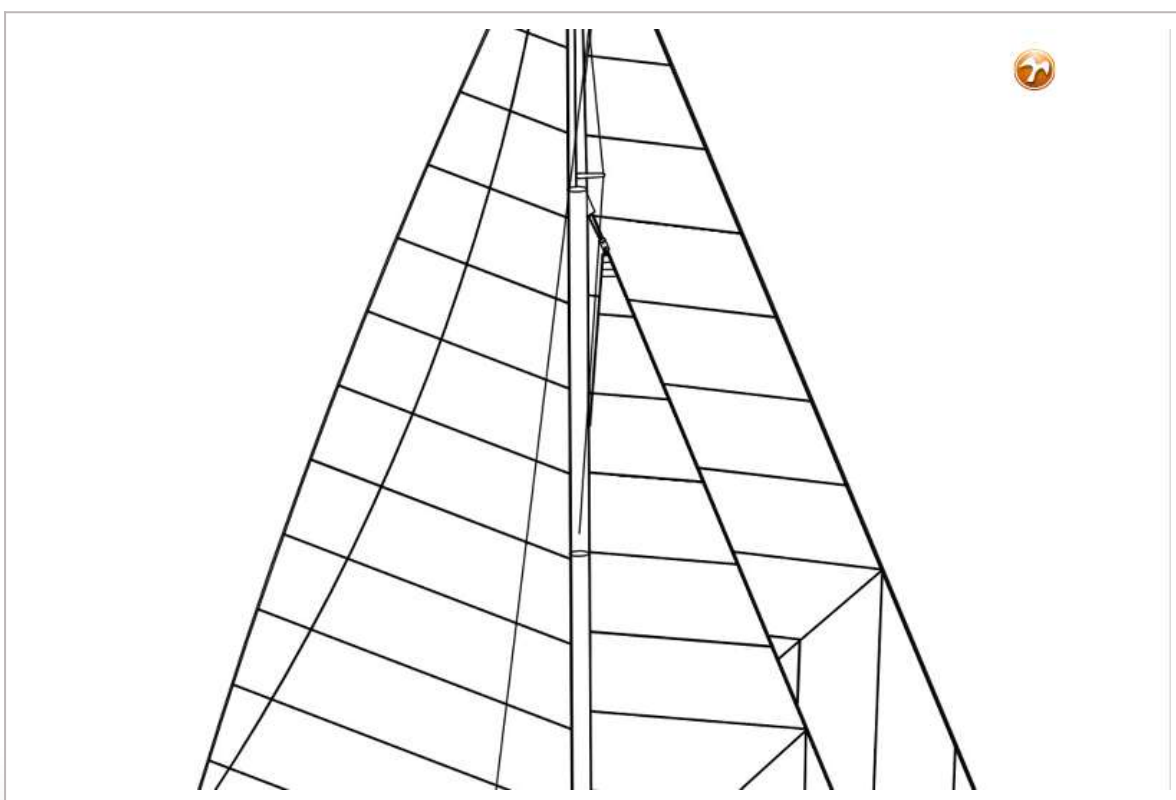
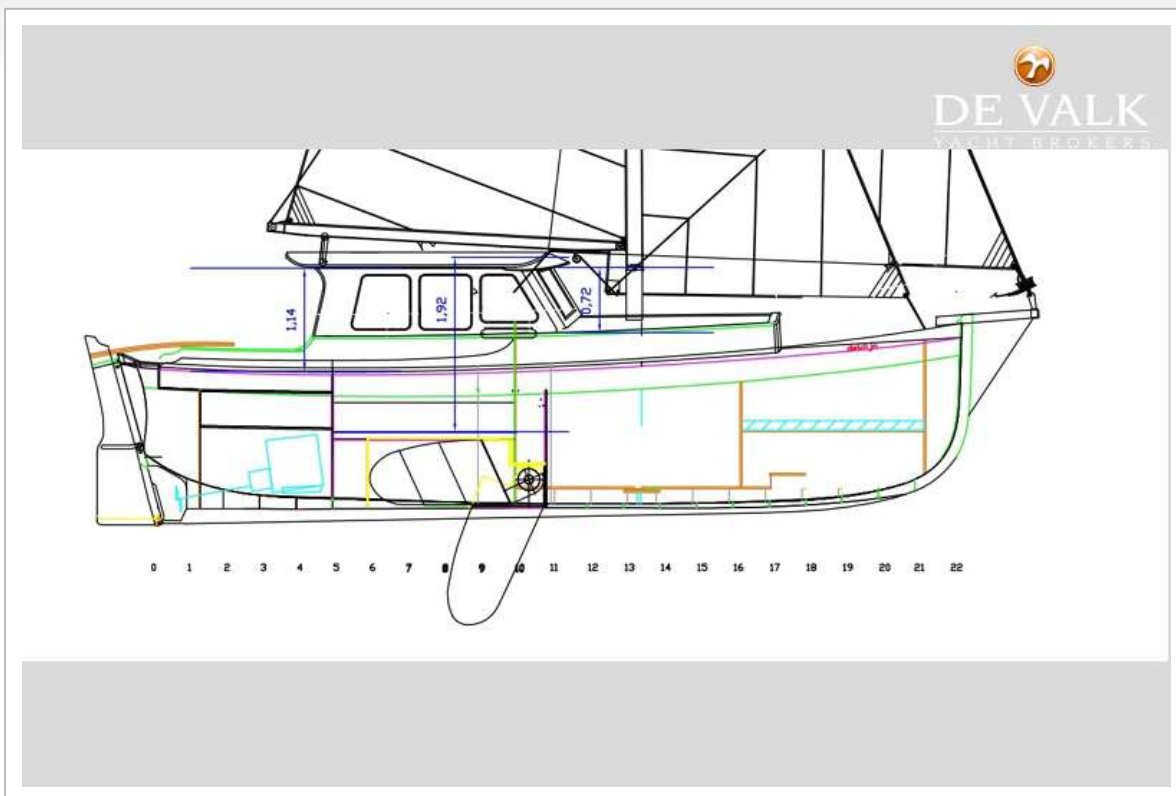
NOORDKAPER 31 MS



NOORDKAPER 31 MS



NOORDKAPER 31 MS



NOORDKAPER 31 MS

