



DE VALK  
YACHT BROKERS



DAVINCI 44



DE VALK  
YACHT BROKERS

## BROKER'S COMMENTS

This amazing, perfectly maintained, almost brand new DaVinci 44 is now for sale on the Costa Blanca. A pocket-sized superyacht that makes heads turn, finished to the highest standards of luxury and detail. Powered by 2 economical, powerful Volvo engines, the yacht offers comfortable and remarkably quiet cruising, thanks to excellent soundproofing. The hull design by Vripack guarantees smooth and ultimate stable sea behaviour. Sleeps 4 comfortably. Sufficient freshwater capacity, excellent Garmin navigation, powerful generator, induction cooking and air-conditioning make this DaVinci complete.

*Willem Koopmans*

## SPECIFICATIONS

<b>Dimensions</b>	13.50 x 4.00 x 1.00 (m)	<b>Builder</b>	DaVinci Yachts
<b>Built</b>	2024	<b>Cabins</b>	2
<b>Material</b>	GRP	<b>Berths</b>	4
<b>Engine(s)</b>	2 x Volvo Penta D6 diesel	<b>Hp/Kw</b>	2 x 340.00 (hp), 250.24 (kw)
<b>Asking price</b>	€ 985.000 (VAT )	<b>Lying</b>	contact sales office

## CONTACT

<b>Sales office</b>	De Valk Costa Blanca	<b>Telephone</b>	+34 96 50 21 569
<b>Address</b>	Costa Blanca Region 03730 Javea Alicante ES	<b>E-mail</b>	costablanca@devalk.nl

## DISCLAIMER

These particulars are given in good faith as supplied but cannot be guaranteed.



## GENERAL

<b>Model</b>	DAVINCI 44
<b>Type</b>	motor yacht
<b>LOA (m)</b>	13,50
<b>Beam (m)</b>	4,00
<b>Draft (m)</b>	1,00
<b>Air draft (m)</b>	2,95
<b>Year built</b>	2024
<b>Launched</b>	2024
<b>Builder</b>	DaVinci Yachts
<b>Country</b>	The Netherlands
<b>Designer</b>	Vripack
<b>Displacement (t)</b>	11,5
<b>CE norm</b>	B
<b>Hull material</b>	GRP
<b>Hull colour</b>	beige
<b>Hull shape</b>	deep-V
<b>Superstructure material</b>	GRP
<b>Deck material</b>	GRP
<b>Deck finish</b>	synthetic teak
<b>Superstructure deck finish</b>	synthetic teak
<b>Cockpit deck finish</b>	synthetic teak
<b>Antifouling (year)</b>	2026
<b>Window material</b>	tempered glass
<b>Radar arch</b>	yes
<b>Fuel tank (litre)</b>	1000
<b>Fuel daytank (litre)</b>	yes
<b>Freshwater tank (litre)</b>	460
<b>Blackwater tank extraction</b>	yes
<b>Greywater tank (litre)</b>	190
<b>Wheel steering</b>	hydraulic



Outside helm position	yes
More info on hull	As new
More info on paintwork	2026 antifouling included
Extra info	Dry stored in winter

## ACCOMMODATION

Cabins	2
Berths	4
Interior	oak Light
Floor	parquet
Open cockpit	yes
Saloon	yes
Headroom saloon (m)	1,95
Air-conditioning	reverse cycle airco Webasto
Aft Cabin	Open layout
Sliding door to cockpit	yes
Galley	In cockpit
Countertop	marble White flame
Sink	stainless steel
Cooker	induction 4 burner
Fridge	Double
Hot water system	220V + engine
Water pressure system	electrical
Owners cabin	yes
Bathroom	shared
Toilet	shared
Toilet system	electric
Wash basin	in the bathroom
Shower	shared Separate cabin
Guest cabin 1	twin single
Wardrobe	hanging and shelves



<b>Bathroom</b>	shared
<b>Toilet</b>	shared
<b>Toilet system</b>	electric
<b>Wash basin</b>	in the bathroom
<b>Shower</b>	shared Separate cabin

## MACHINERY

<b>No of engines</b>	2
<b>Make</b>	Volvo Penta
<b>Type</b>	D6
<b>HP</b>	340
<b>kW</b>	250.24
<b>Fuel</b>	diesel
<b>Year installed</b>	2024
<b>Maximum speed (kn)</b>	30
<b>Cruising speed (kn)</b>	22
<b>Engine cooling system</b>	freshwater heat exchanger
<b>Drive</b>	Z-drive
<b>Engine controls</b>	electrical
<b>Bowthruster</b>	electric
<b>Sternthruster</b>	electric
<b>Propeller type</b>	fixed
<b>Propeller blades</b>	Duo Prop
<b>Manual bilge pump</b>	yes
<b>Electric bilge pump</b>	yes
<b>Bilge alarm</b>	yes
<b>Generator</b>	Fisher Panda
<b>Batteries</b>	Lithium
<b>Start battery</b>	yes
<b>Generator battery</b>	yes
<b>Inverter</b>	yes



<b>Battery charger/inverter</b>	Mastervolt 3000 Watt
<b>Shorepower</b>	with cable
<b>Stabilizers</b>	0-speed Quick Gyro
<b>Extra info</b>	Yacht is as new.
<b>Extra info</b>	Both engines and generator serviced Febr. 2026

## NAVIGATION

<b>Compass</b>	yes
<b>Depth sounder</b>	On Garmin
<b>Log</b>	On Garmin
<b>VHF</b>	Garmin
<b>Radar</b>	Garmin
<b>Plotter</b>	2x Garmin 10" with C-zone digital system
<b>AIS transponder</b>	Garmin
<b>Navigation lights</b>	LED

## EQUIPMENT

<b>Fixed windscreen</b>	yes
<b>Cockpit cover</b>	yes
<b>Bimini</b>	yes
<b>Cockpit cushions</b>	Beige
<b>Cockpit table</b>	Teak
<b>Bathing platform</b>	yes
<b>Boarding ladder</b>	yes
<b>Gangway</b>	Electric
<b>Deck shower</b>	yes
<b>Anchor</b>	CQR Plough Stainless Steel
<b>Anchor chain</b>	yes
<b>Windlass</b>	electrical
<b>Wiper</b>	On all front windows
<b>Horn</b>	yes



<b>Fenders</b>	yes
<b>Mooring lines</b>	yes
<b>Radio-cd player</b>	Fusion based
<b>Sub-woofer</b>	Fusion
<b>Cockpit speakers</b>	Fusion
<b>Speakers in salon</b>	yes
<b>Fire extinguisher</b>	yes
<b>Latest extinguisher survey</b>	2024
<b>Extinguisher in engine room</b>	yes



# DAVINCI 44



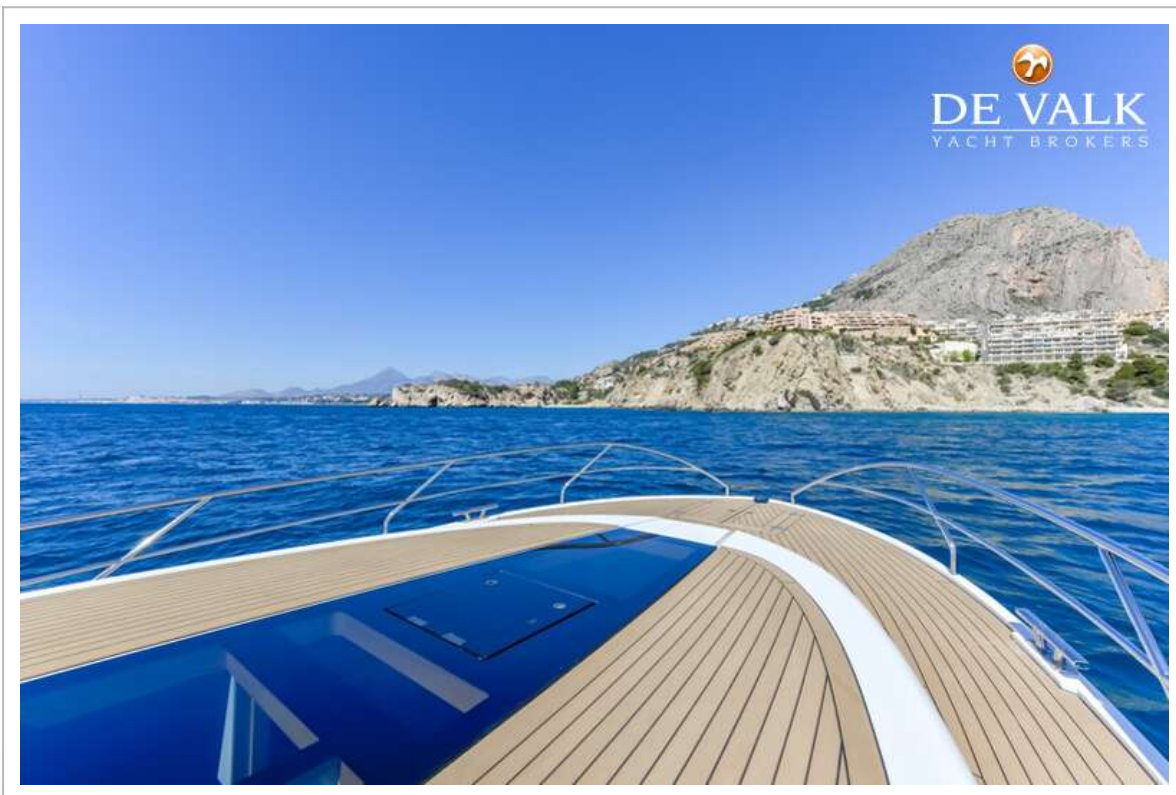
# DAVINCI 44



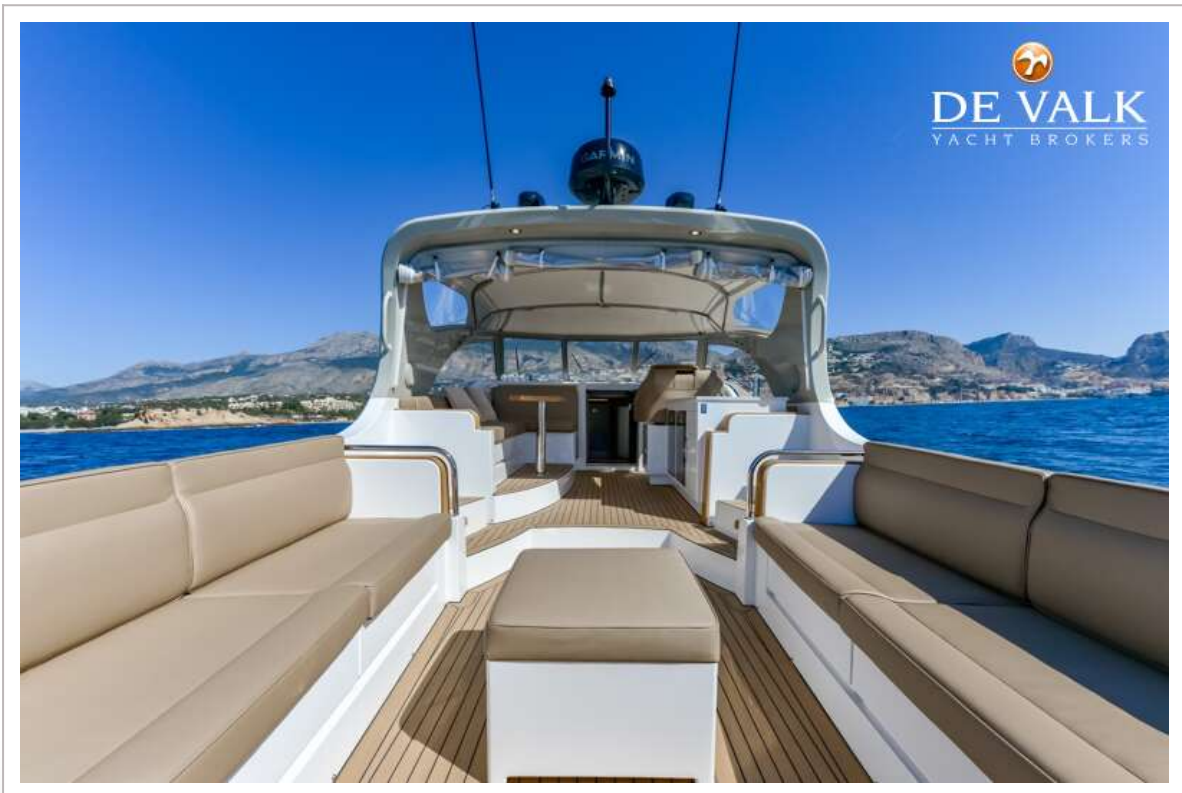
# DAVINCI 44



# DAVINCI 44



# DAVINCI 44



# DAVINCI 44



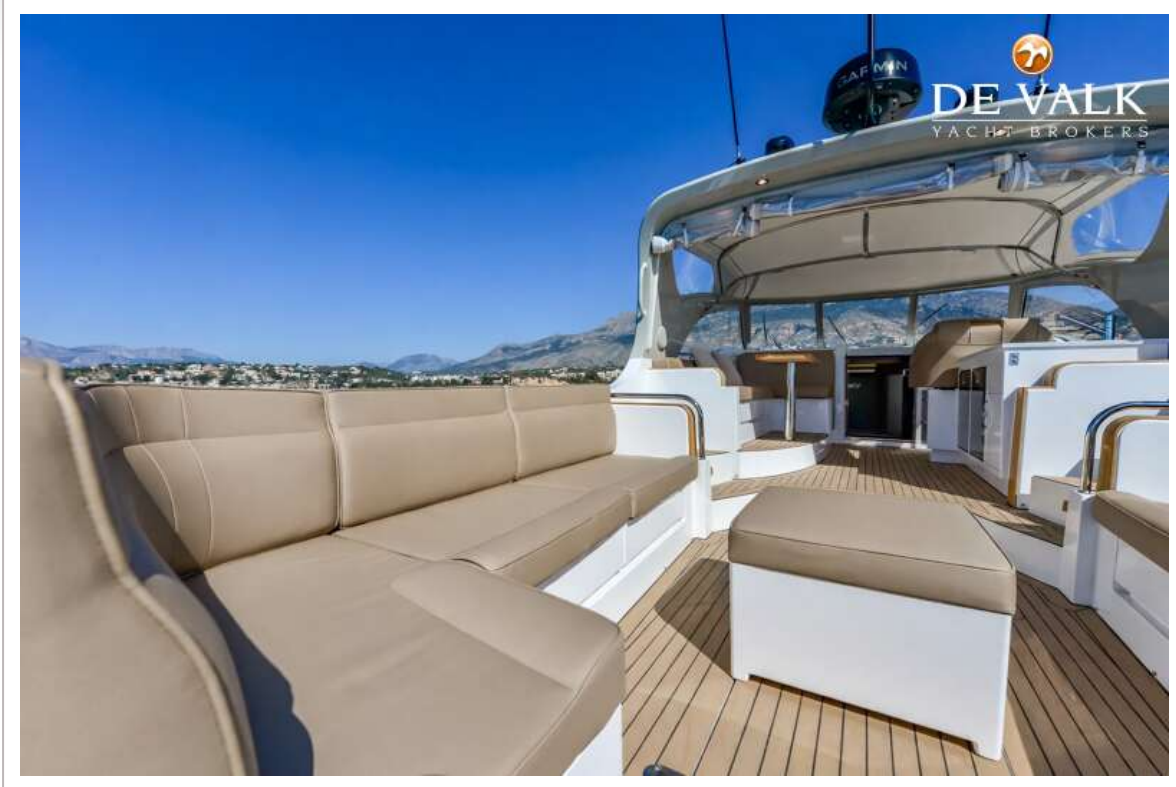
# DAVINCI 44



# DAVINCI 44



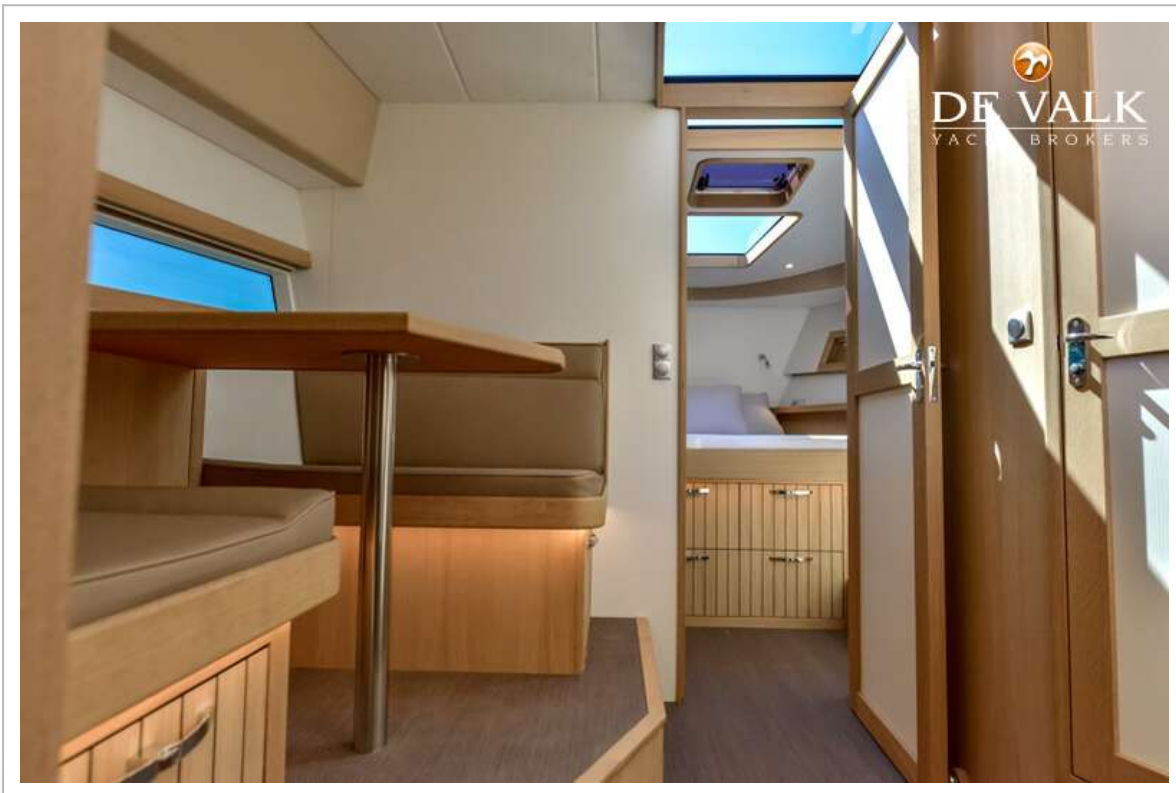
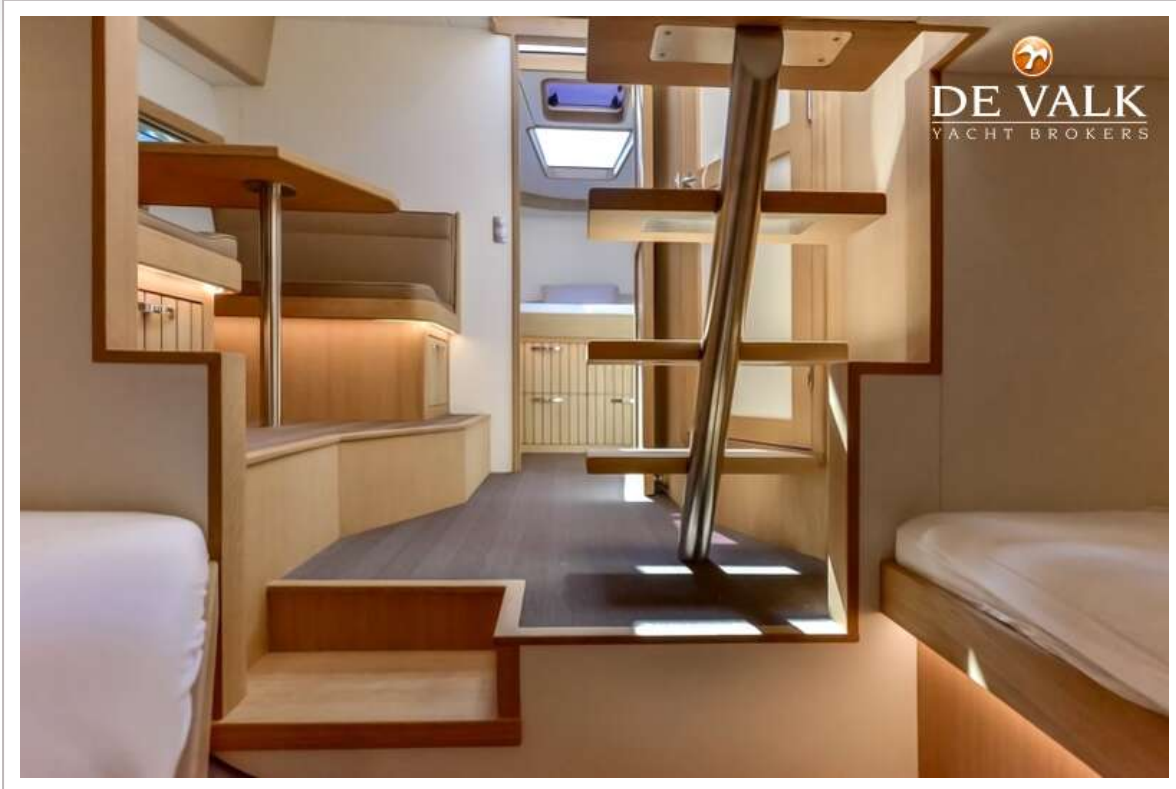
# DAVINCI 44



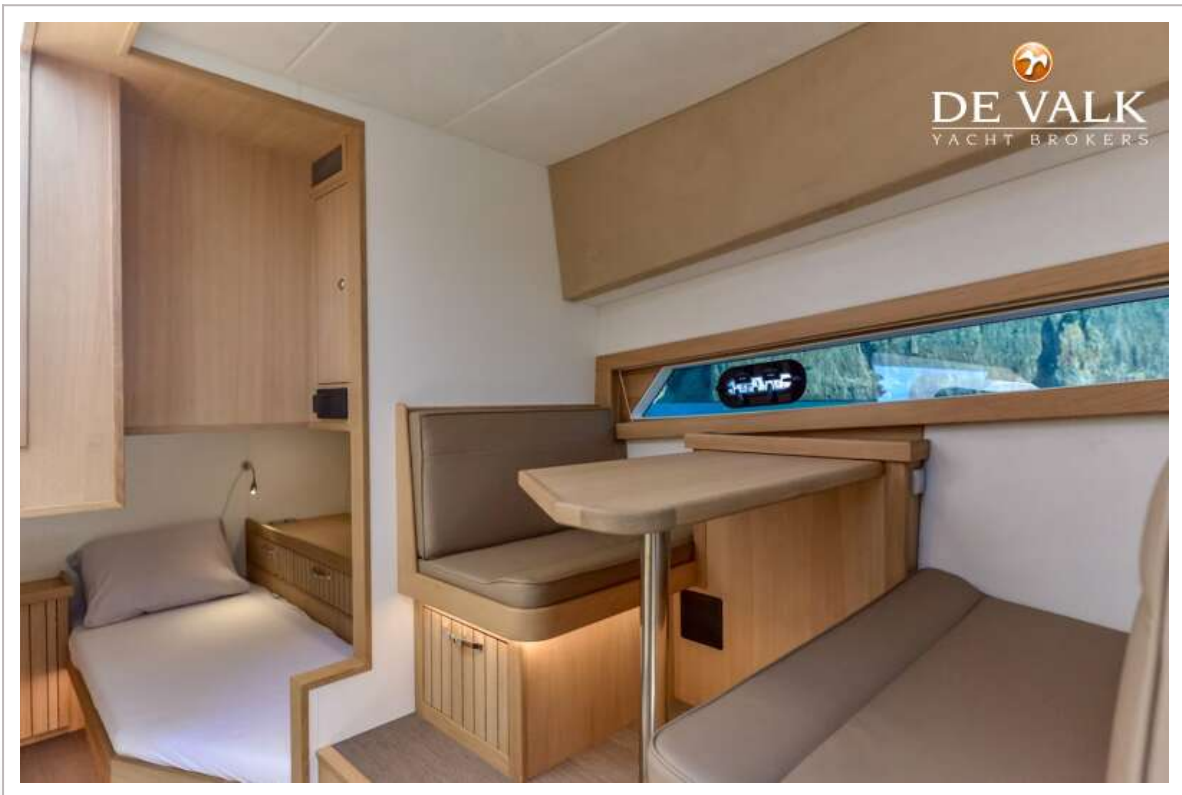
# DAVINCI 44



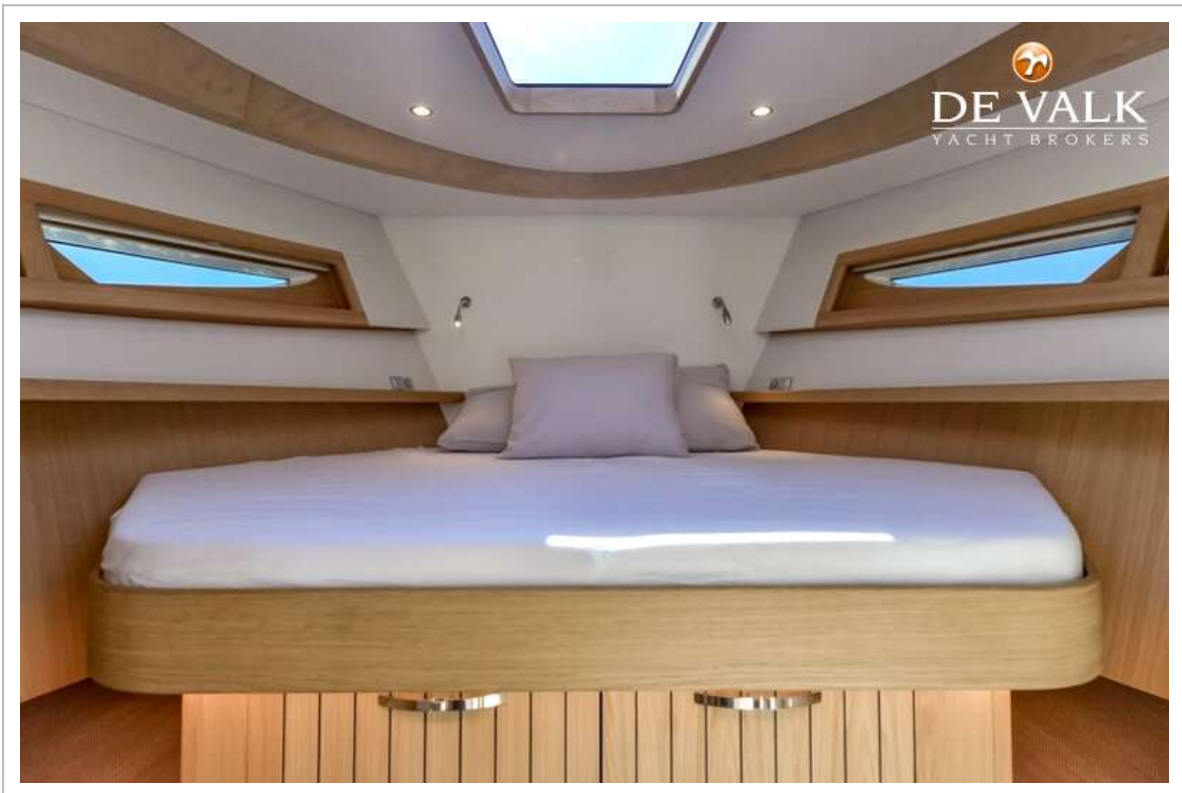
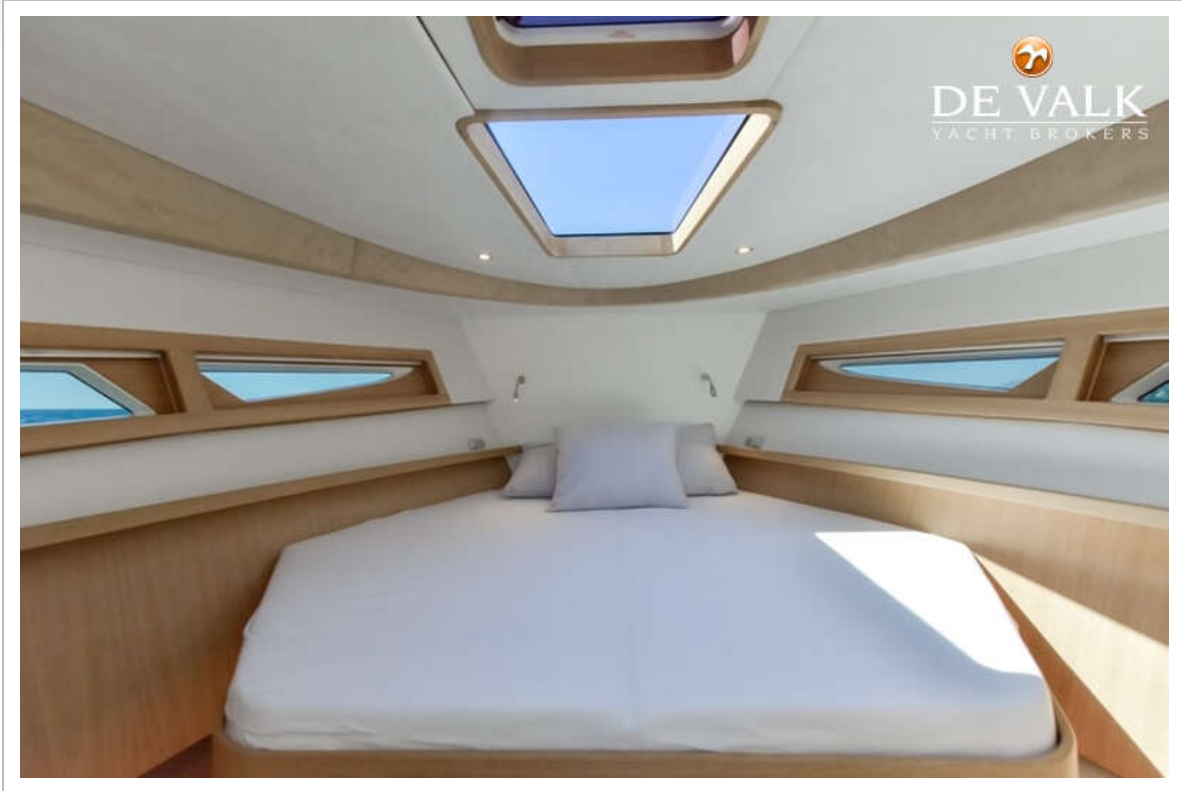
# DAVINCI 44



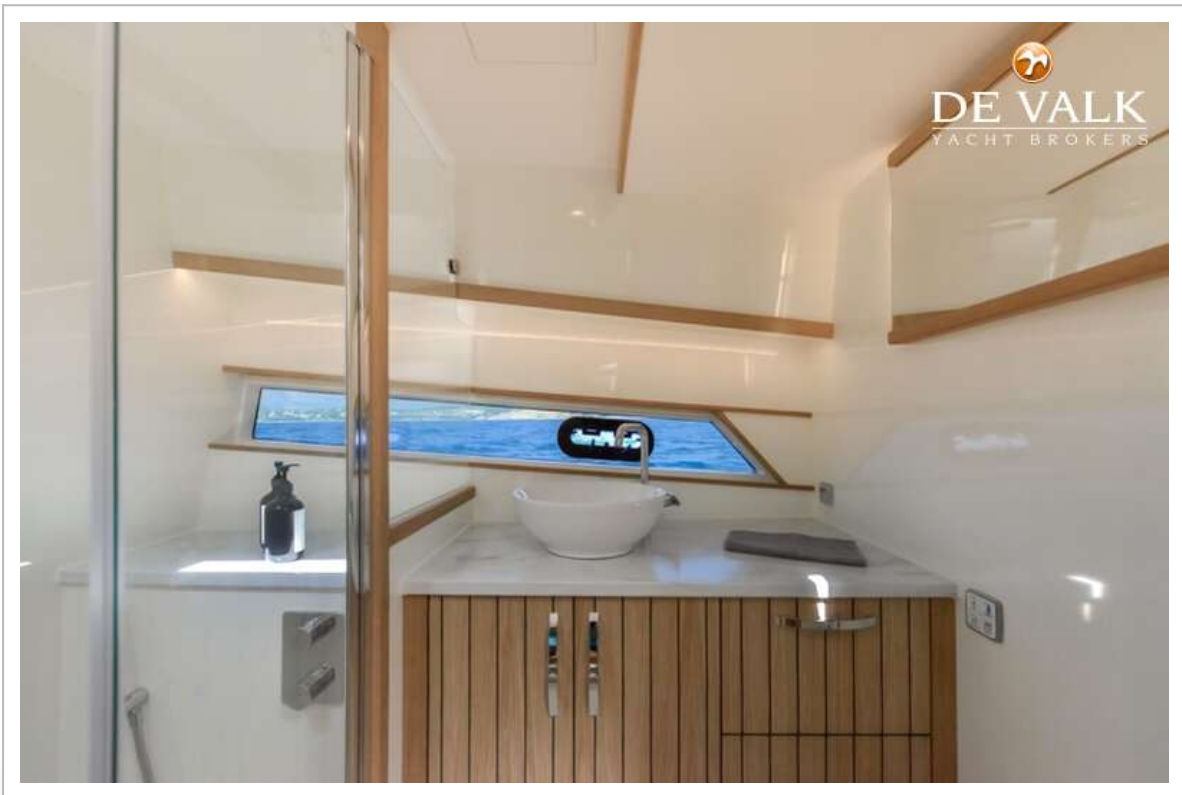
# DAVINCI 44



# DAVINCI 44



# DAVINCI 44



*DaVinci 44*

