



PUFFIN 42

PUFFIN 42

BROKER'S COMMENTS

A real classic, yet modern, sturdy, safe, comfortable, very beautiful cruiser with Deck saloon / Pilot house. Steel hull and Mahogany interior. The yacht is rather new, 2018 and in excellent condition. New engine 2025. Centreboard with minimum draft of 1.10 m. Easy to handle, even for a small crew, able to dry out, strong and safe. More info and photos available later.

Per Engdahl

SPECIFICATIONS

Dimensions	14.55 x 4.20 x 1,10 / 2.45 (m)	Builder	VMG Yachtbuilders
Built	2018	Cabins	2
Material	Steel	Berths	6
Engine(s)	1 x Volvo Penta D2-75 diesel	Hp/Kw	75.00 (hp), 55.20 (kw)
Asking price	€ 780.000 (VAT Not paid)	Lying	

CONTACT

Sales office	De Valk Sweden	Telephone	+46 72 358 50 74
Address		E-mail	sweden@devalk.nl
	385 98 Bergkvara		
	SE		

DISCLAIMER

These particulars are given in good faith as supplied but cannot be guaranteed.



GENERAL

Model	PUFFIN 42
Type	sailing yacht
LOA (m)	14,55
LWL (m)	11,77
Beam (m)	4,20
Draft (m)	2,45
Draft min (m)	1,10
Air draft (m)	18,90
Headroom (m)	2,00
Year built	2018
Builder	VMG Yachtbuilders
Country	The Netherlands
Designer	Olivier van Meer
Displacement (t)	19
Ballast (tonnes)	4 ton + 1.2 ton in centreboard
Gross tonnage	yes
CE norm	A
Hull material	steel
Hull colour	White
Hull shape	Round bilged with classic heart-shaped transom and spoon bow.
Keel type	Double plated NACA profiled electric operated centreboard.
Superstructure material	Steel
Deck material	Steel
Deck finish	Teak
Superstructure deck finish	Teak
Cockpit deck finish	Teak
Window frame	Deck saloon has 6 side windows and 3 front windows + 2 portholes
Window material	Portside portholes: guest cabin 1, salon 2, shower 1, m cabin 1
Deckhatch	7 openable deck hatches
Portholes	Starboard: salon/galley 3, toilet 1, master cabin 1



Insulation	Thermal insulation with foam
Fuel tank (litre)	290 litre
Fuel tank 2 (litre)	290 litre
Level indicator (fuel tank)	yes
Fuel daytank (litre)	80 litre
Level indicator (daytank)	yes
Freshwater tank (litre)	2 x 310 litre
Level indicator (freshwater)	yes
Blackwater tank (litre)	380 litre
Level indicator (blackwater)	yes
Wheel steering	yes
Inside helm position	With remote control to autopilot
Outside helm position	Leather covered stainless steel steering wheel
Emergency tiller	yes
More info on hull	Sandblastred and two component paint system inside and outside
More info on paintwork	Extra strong anti fouling

ACCOMMODATION

Cabins	2
Berths	6
Interior	Mahogany
Pilot house/deck saloon	yes
Headroom saloon (m)	2 m in lower saloon, 2.10 meter in Deck Saloon
Heating	Dickinson Alaska diesel stove
Heating 2	Webasto hot air, outlets in salon and master cabin.
Chart table	yes
Galley	yes
Sink	Double extra deep stainless steel sink
Cooker	Electric three cooker
Oven	Electric



Fridge	yes
Hot water system	From shore power, generator and also engine cooling system.
Water pressure system	yes
Owners cabin	High quality matrass, 210 cm length
Bed length (m)	210 cm
Wardrobe	yes
Bathroom	Electric toilet system. Separate shower
Toilet system	yes
Wash basin	yes
Shower	yes
Guest cabin 1	High quality mattress
Bed length (m)	210 cm
Wardrobe	yes
Washing machine	yes

MACHINERY

No of engines	1
Make	Volvo Penta
Type	D2-75
HP	75
kW	55.20
Fuel	diesel
Year installed	2025
Maximum speed (kn)	8
Cruising speed (kn)	6
Range (nm)	700
Drive	shaft
Engine controls	Temp meter, oil pressure, hour counter, voltage, Key, start,stop
Bowthruster	Hydraulic
Propeller type	Fixed bronze
Propeller blades	Three blades



Propeller shaft material	Stainless steel
Shaft lubrication	Water lubricated
Manual bilge pump	One in forepeak and one in cockpit.
Electric bilge pump	2 RM1100-24, in different compartments + alarm
Bilge alarm	yes
Generator	5 Kw whisper power
Batteries	All new 2025
Start battery	New 2025
Service battery	6 Victron 12V/240 Ah AGM deep cycle, new 2025
Bowthruster battery	yes
Battery monitor	Victron battery balancer
Battery charger	yes
Battery charger/inverter	yes
Shorepower	25 meter shore power cable
Watermaker	Spectra Newport 400 mkII 60l/h

NAVIGATION

Compass	yes
Electric compass	Fluxgate compass
Depth sounder	yes
Log	yes
Windset	yes
VHF	With DSC, indoor and outdoor controls
Autopilot	Simrad, remote control
Radar	New Furuno Radar
GPS	yes
Plotter	New Furuno cockpit plotter
Personal computer	Mini mac and monitor in pilot house.
Navigation lights	yes

EQUIPMENT



Cockpit table	Foldable
Boarding ladder	Integrated in rudder
Anchor	30 kg galvanized
Anchor chain	10 mm , 100 meter
Anchor 2	yes
Windlass	Electric
Capstan	yes
Dinghy	yes
Outboard	yes
Outboard support	yes
Davits	yes
Grab rail (superstructure)	Stainless steel
Railing side opening gates	yes
Pushpit	yes
Pulpit	yes
Life raft	yes
Rope cutter	yes
Fenders	yes
Mooring lines	Yes + Extra long rope on roller
Cockpit speakers	yes
Speakers in salon	yes
Fire extinguisher	3 x 2kg

RIGGING

Rigging	Aluminium deck stepped Cutter rigg.
Standing rigging	Oversized stainless steel.
Material mast	Aluminium
Spreaders	Two pair
Mainsail	Furling mainsail with short vertical battens.
Cutterstay	yes
Jib	Aluminium boom for jib



Genoa	Furling
Genoa furler	yes
Gennaker	yes
Genoa sheetwinches	2 Electrical in cockpit
Halyard winches	2 winches on mast, 2 manual on top of the pilot house
Multifunctional winches	2 electrical in the cockpit 3 manual in the cockpit





PUFFIN 42



PUFFIN 42



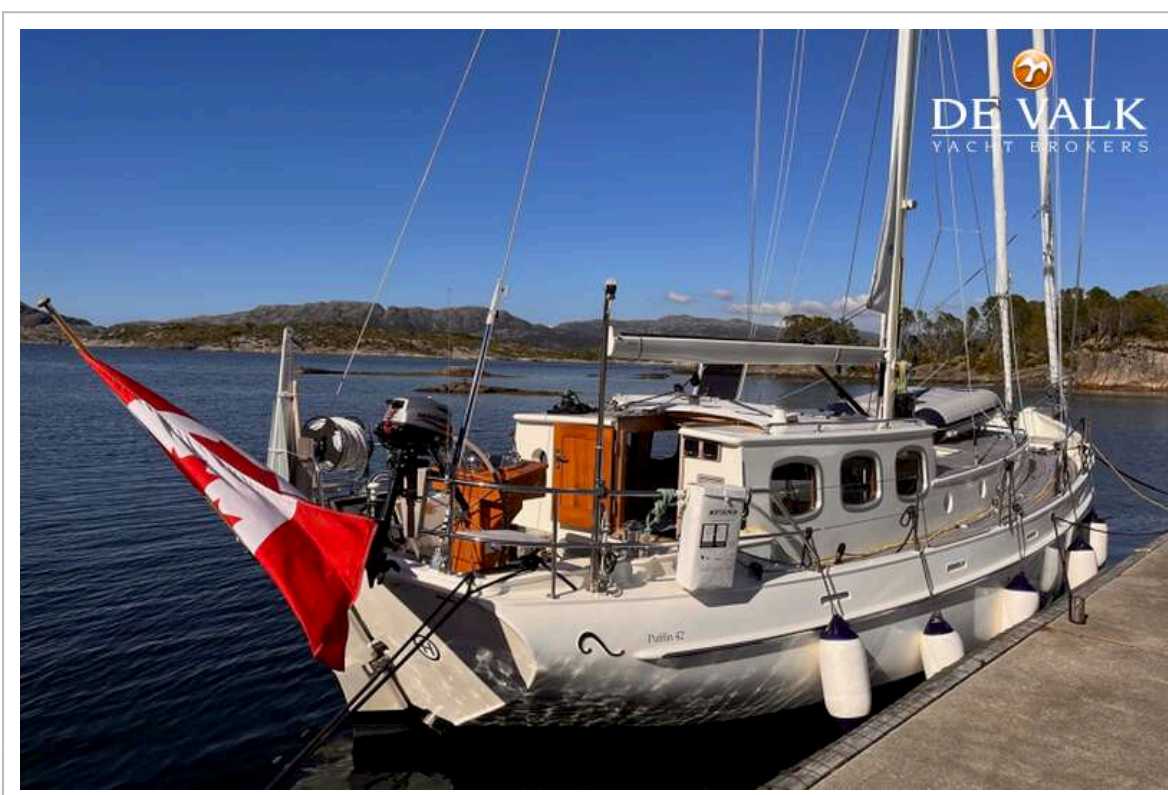
PUFFIN 42



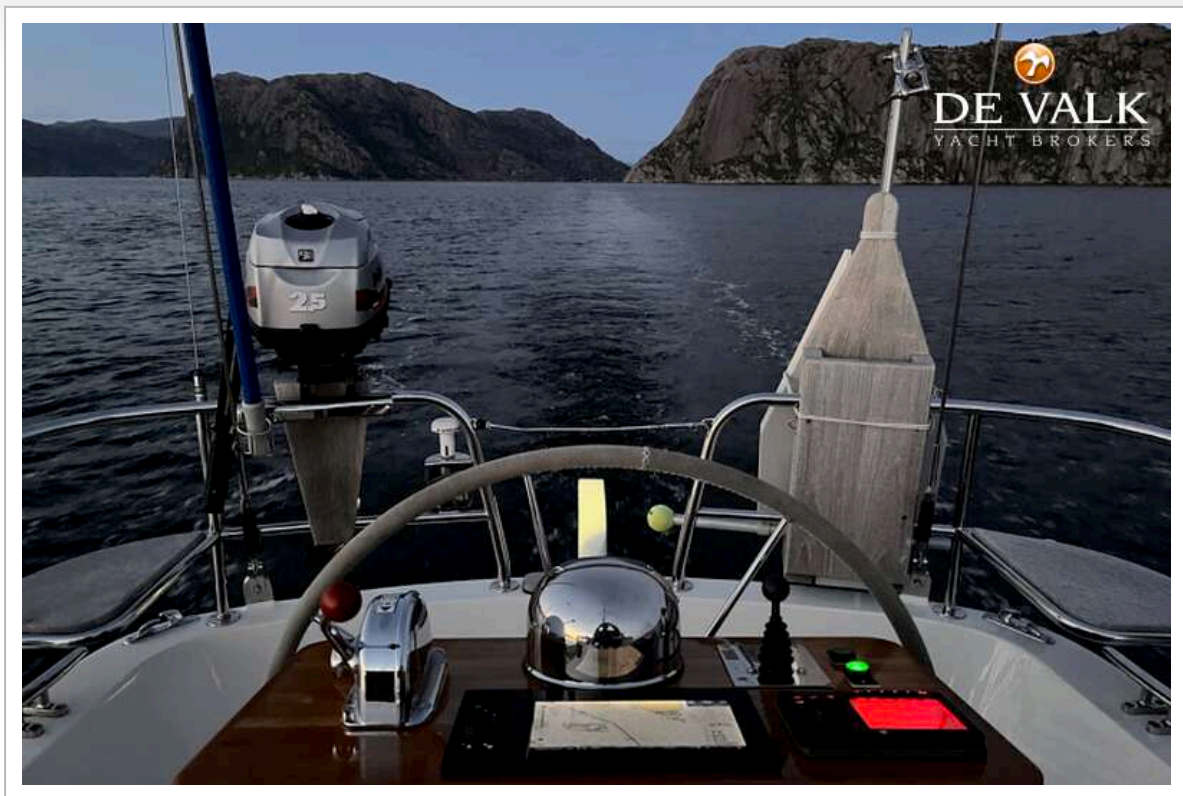
PUFFIN 42



PUFFIN 42

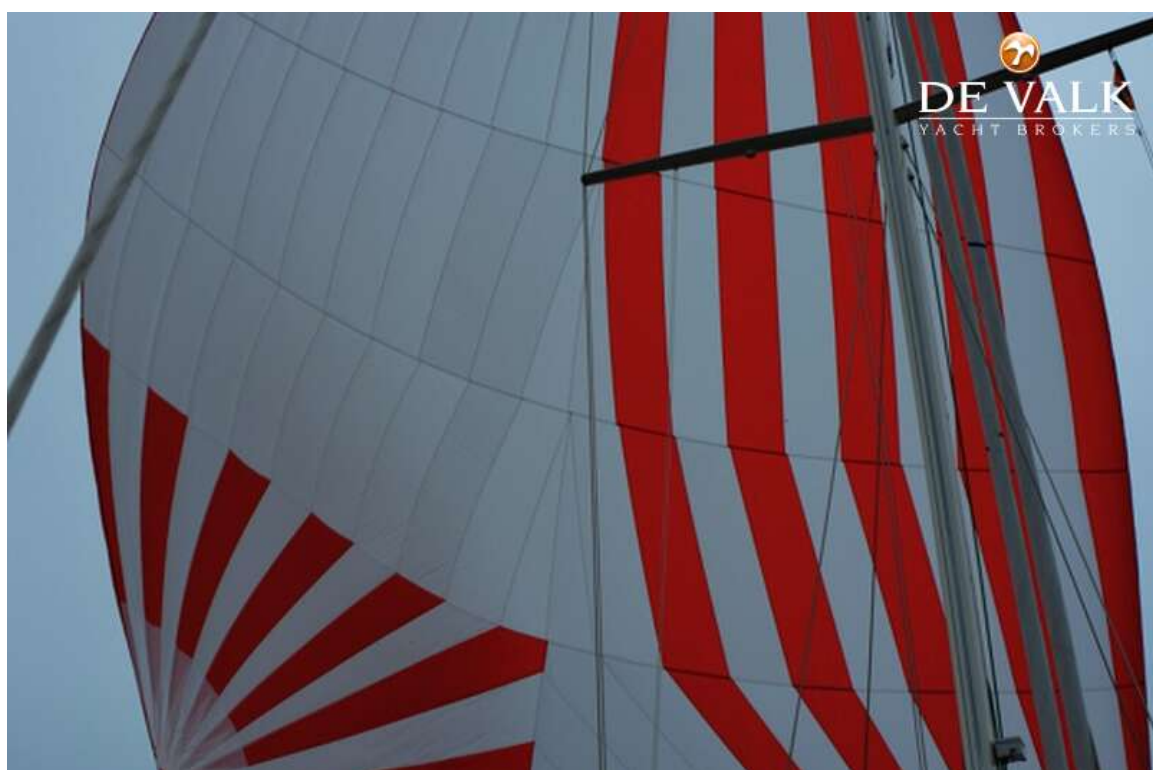


PUFFIN 42



PUFFIN 42

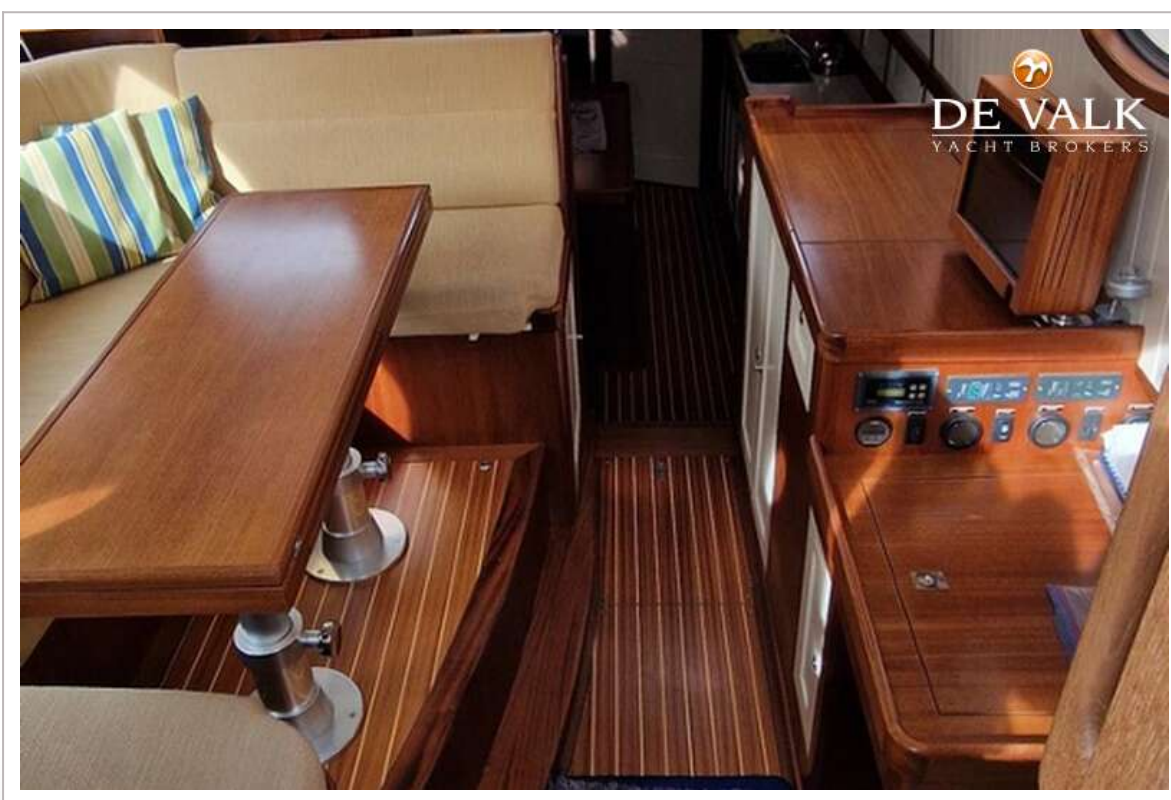
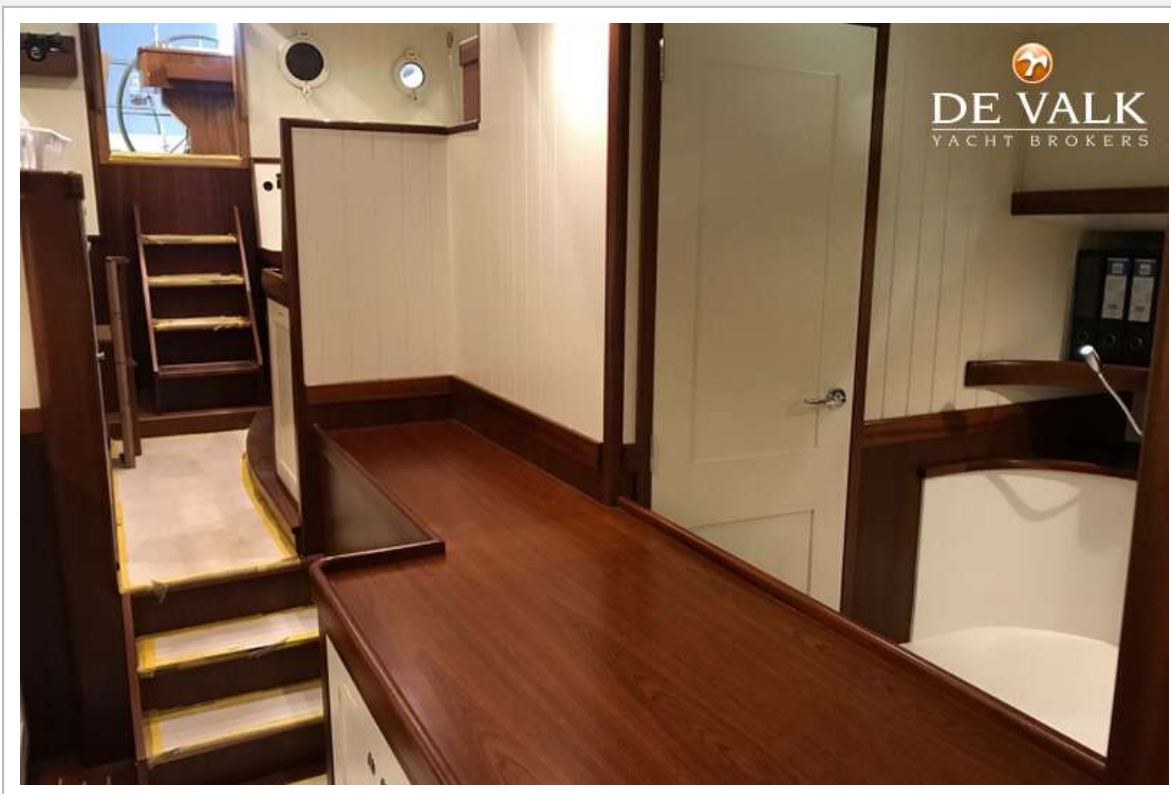




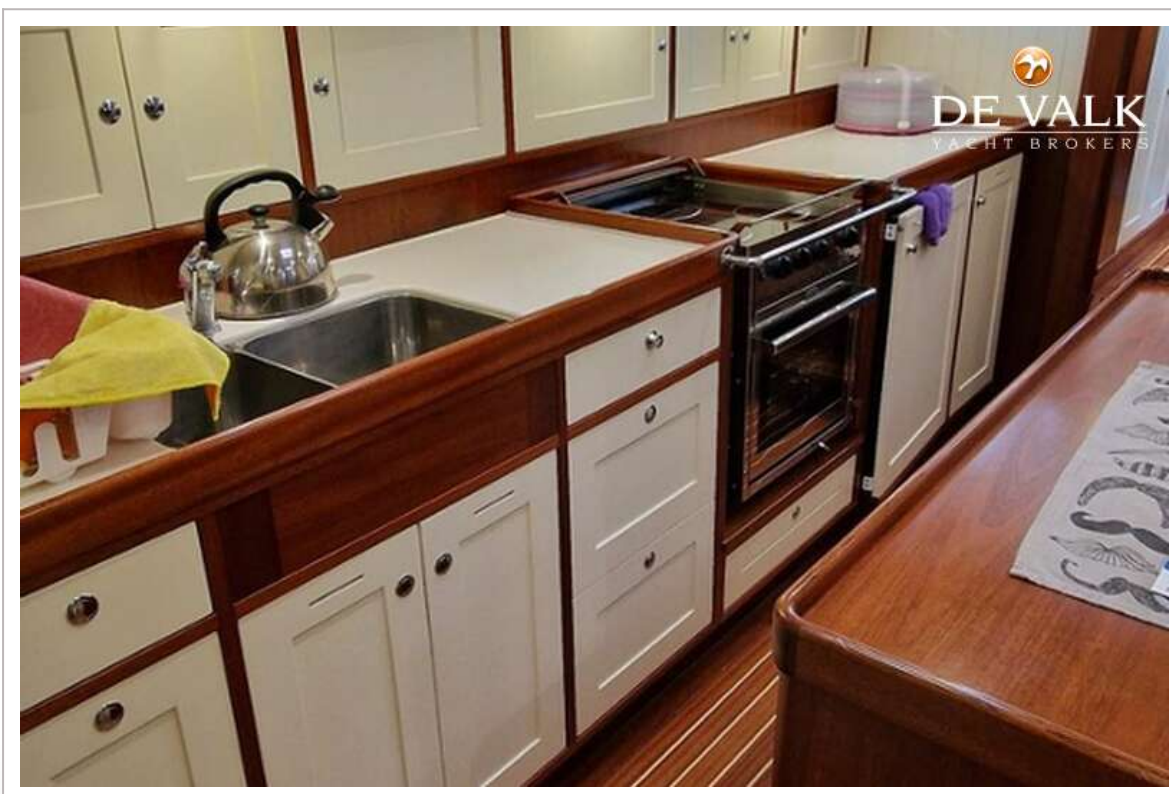
PUFFIN 42



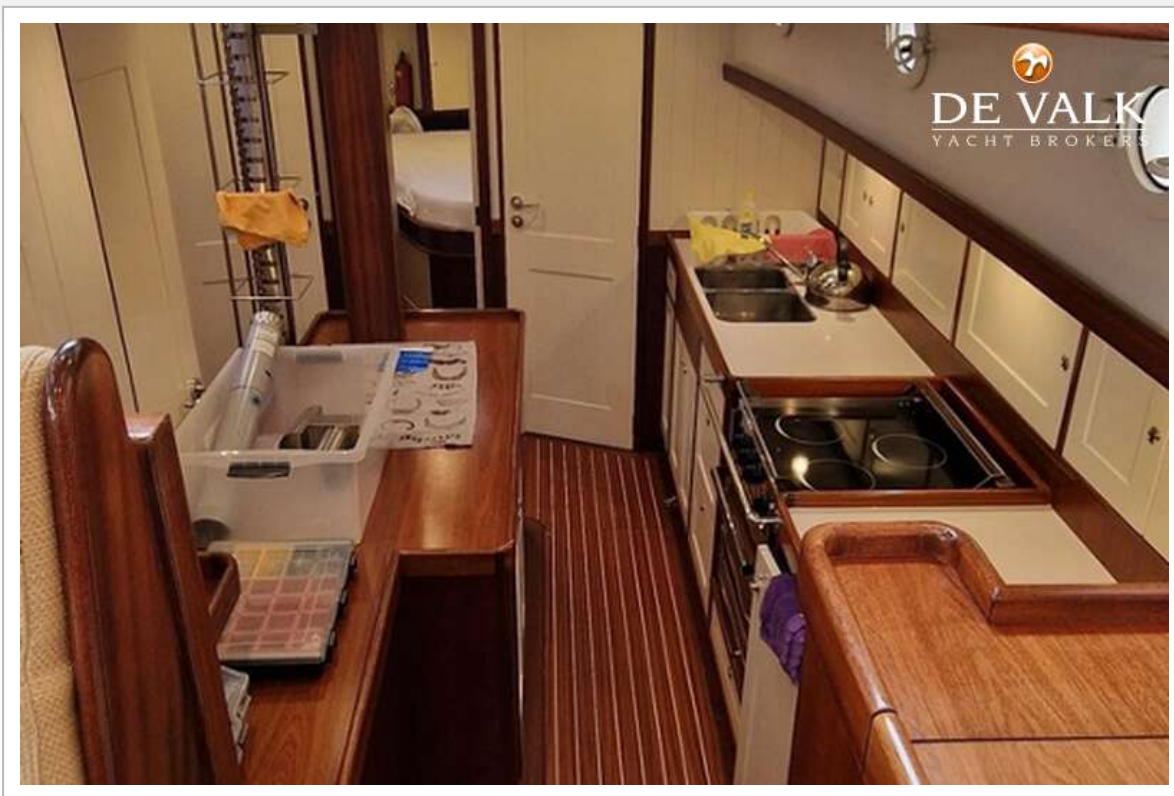
PUFFIN 42



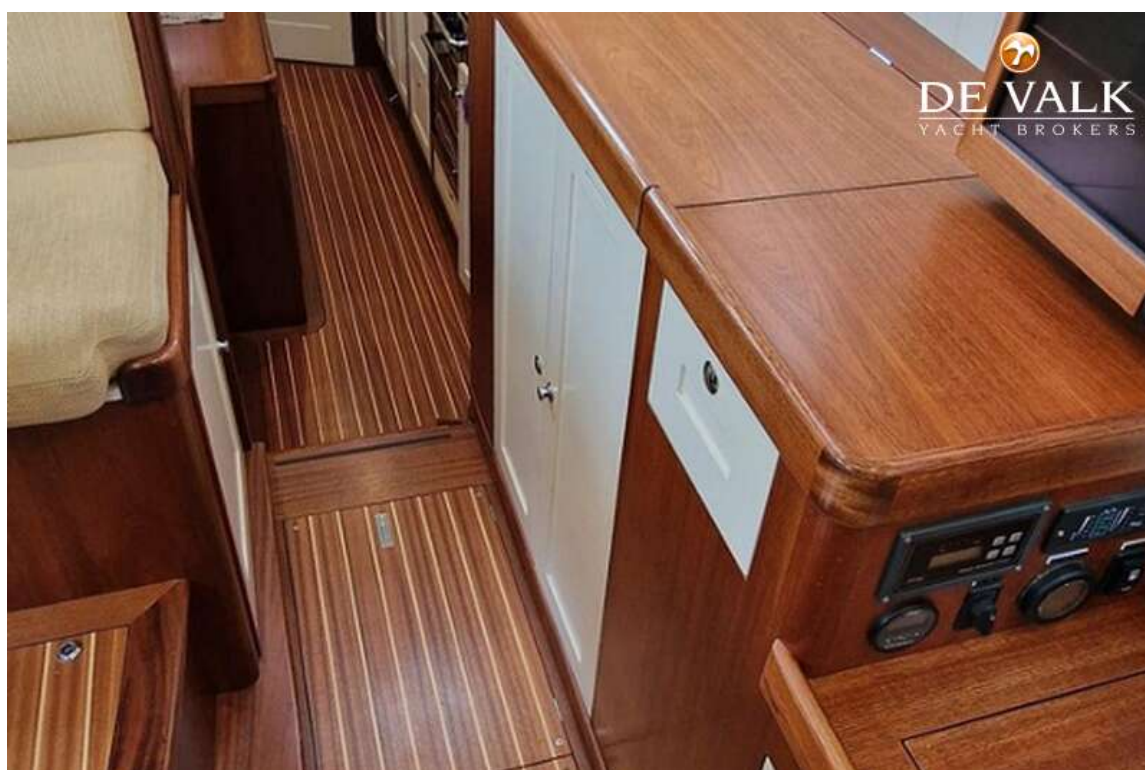
PUFFIN 42



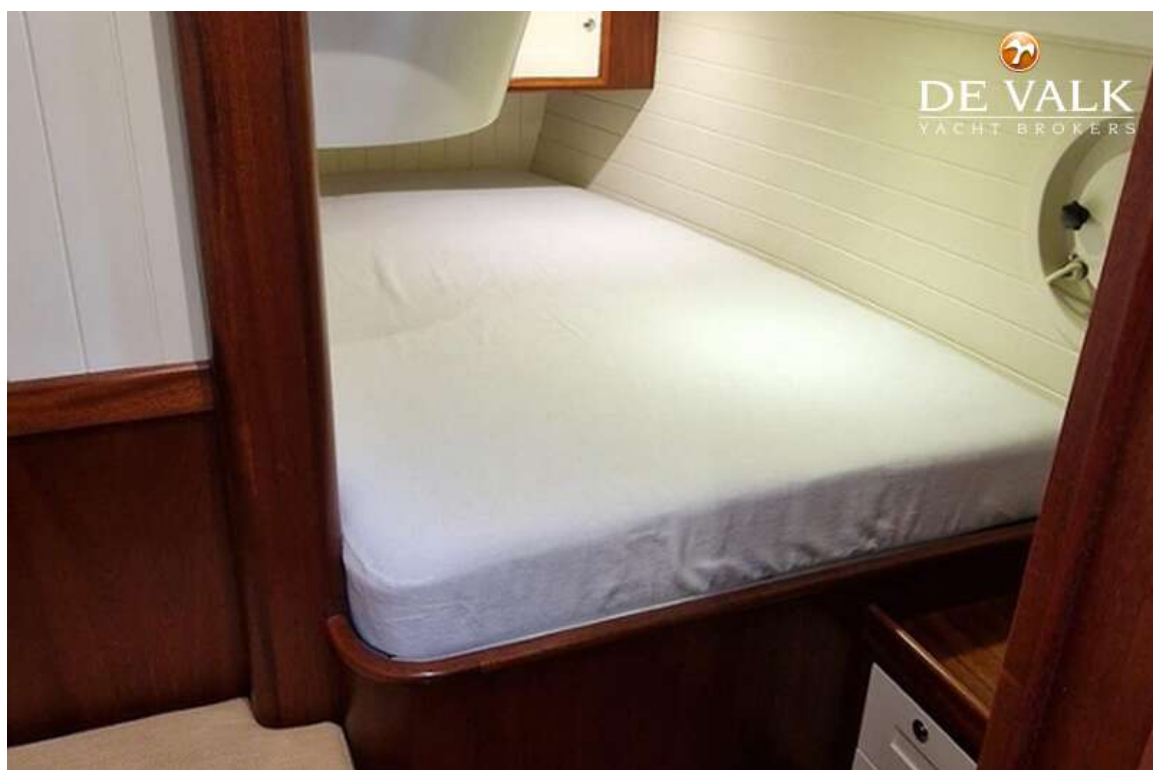
PUFFIN 42

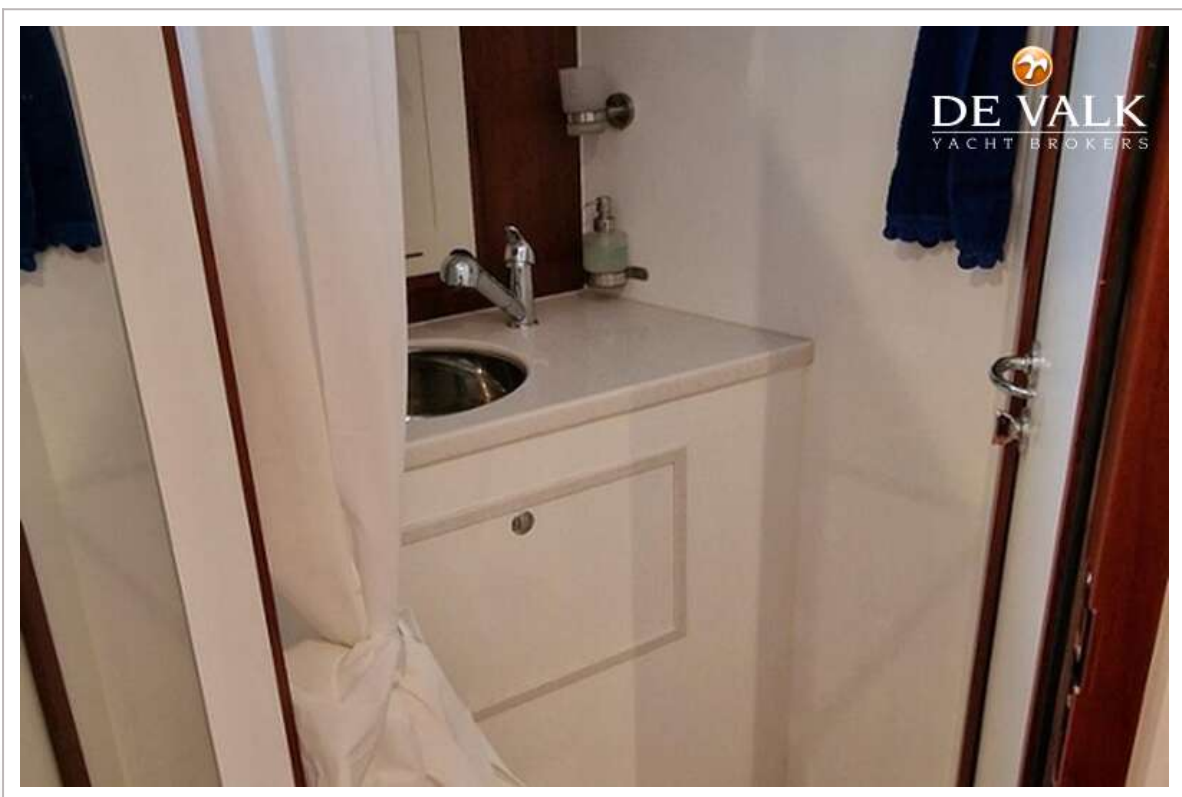
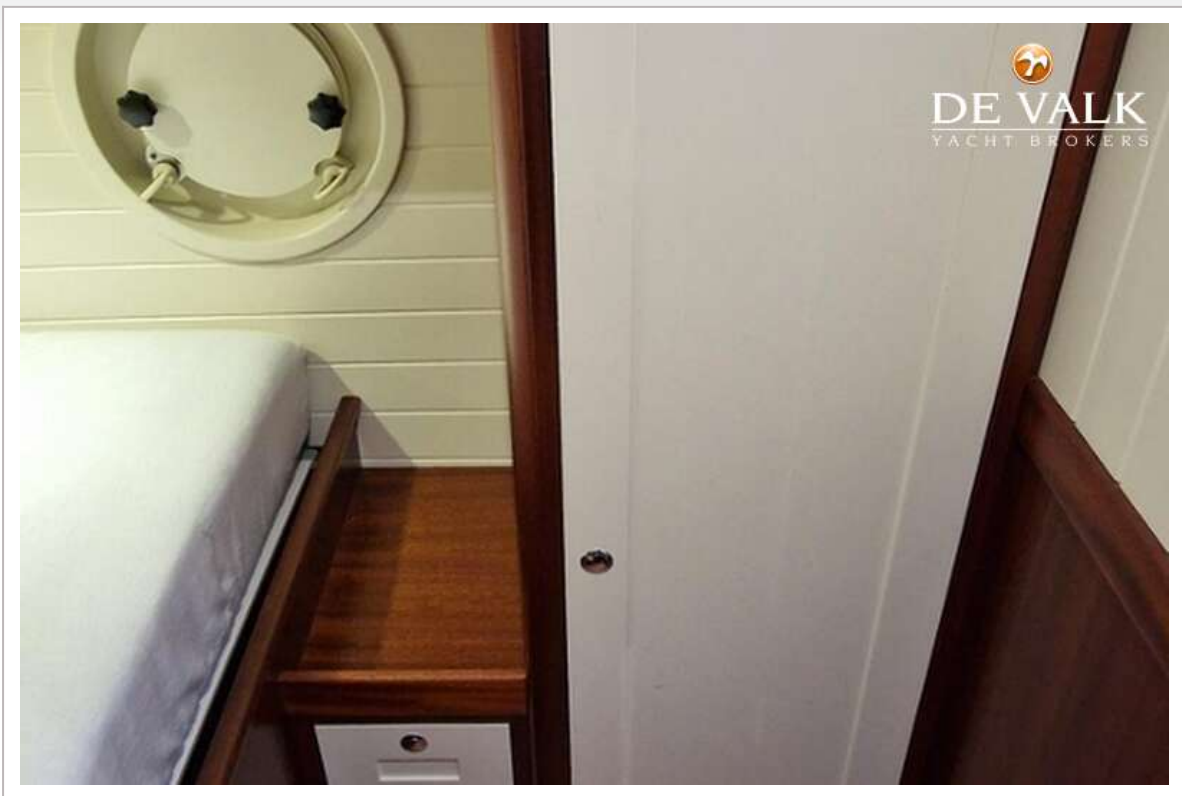


PUFFIN 42



PUFFIN 42

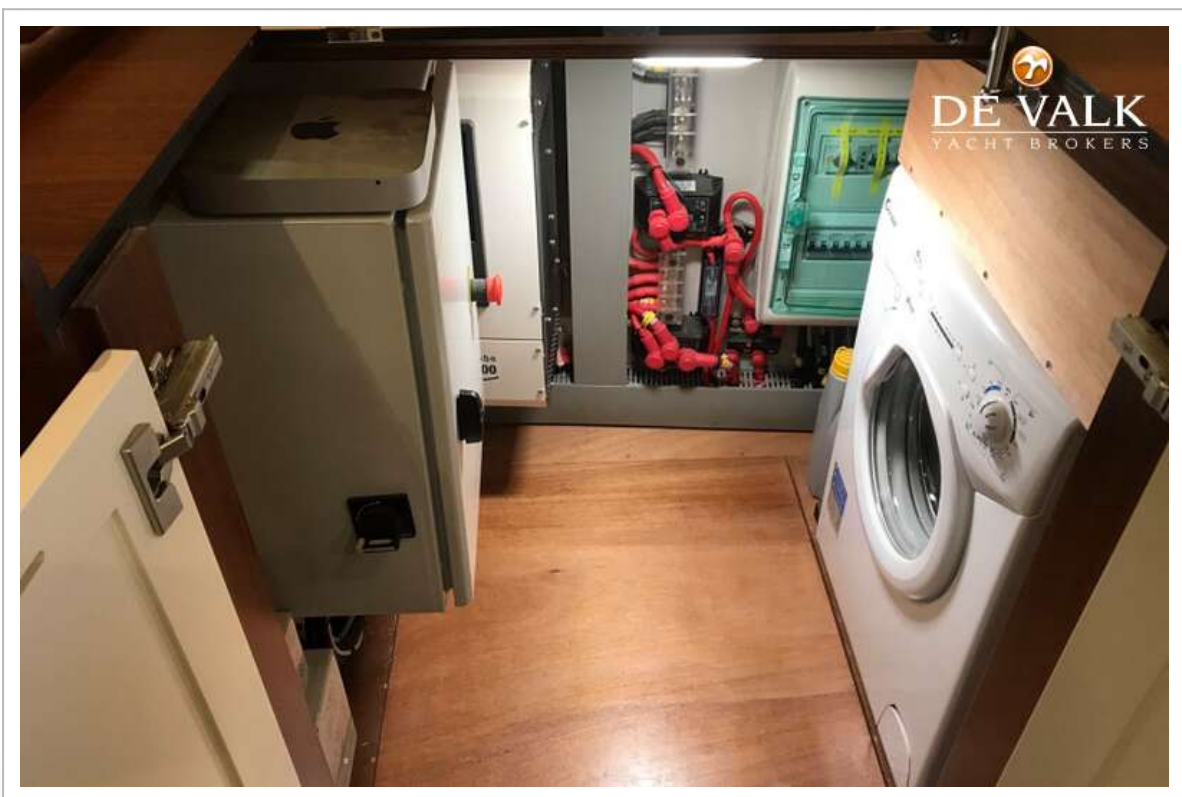




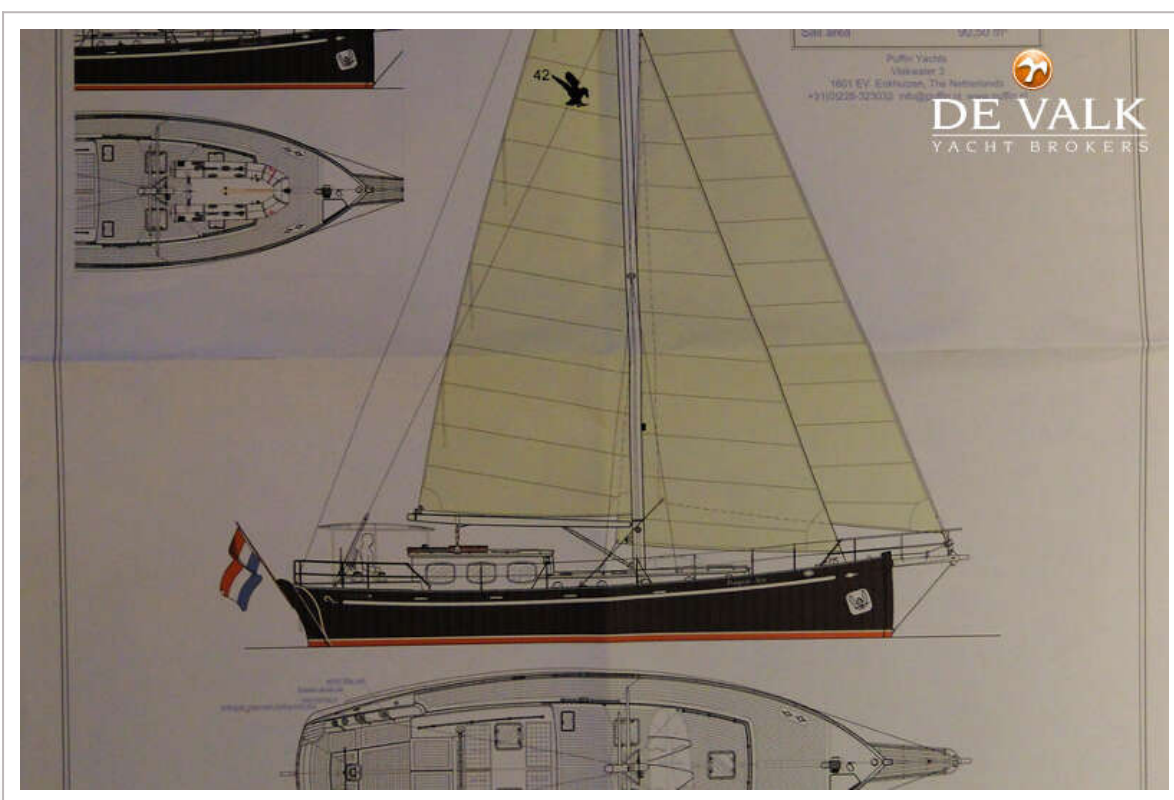
PUFFIN 42



PUFFIN 42



PUFFIN 42



PUFFIN 42

