



SUNSEEKER PREDATOR 60



DE VALK  
YACHT BROKERS

# SUNSEEKER PREDATOR 60

## BROKER'S COMMENTS

This Sunseeker Predator 60 is fitted with cockpit patio doors, allowing a very versatile use of the vessel. During day and sea time, you can fully enjoy the exterior cockpit fitted with wetbar, sofa and sunbed. Back in port, you can benefit from a total privacy in the internal season. This Predator 60 is a must-see yacht characterized by her sporty, sleek and stylish design, equipped with many options, which offer a marvellous cruising experience.

*Eric Lamers*

## SPECIFICATIONS

<b>Dimensions</b>	19.92 x 4.95 x 0.00 (m)	<b>Builder</b>	Sunseeker
<b>Built</b>	2011	<b>Cabins</b>	3
<b>Material</b>	GRP	<b>Berths</b>	6
<b>Engine(s)</b>	2 x MAN V12 diesel	<b>Hp/Kw</b>	2 x 1,200.00 (hp), 883.20 (kw)
<b>Asking price</b>	€ 695.000 (VAT Paid)	<b>Lying</b>	contact Antibes

## CONTACT

<b>Sales office</b>	De Valk Antibes	<b>Telephone</b>	+33 492 91 0202
<b>Address</b>	2, Avenue de Verdun 06600 Antibes FR	<b>E-mail</b>	antibes@devalk.nl

## DISCLAIMER

These particulars are given in good faith as supplied but cannot be guaranteed.



# SUNSEEKER PREDATOR 60

## GENERAL

<b>Model</b>	SUNSEEKER PREDATOR 60
<b>Type</b>	motor yacht
<b>LOA (m)</b>	19,92
<b>Beam (m)</b>	4,95
<b>Year built</b>	2011
<b>Builder</b>	Sunseeker
<b>Displacement (t)</b>	33,5
<b>Hull material</b>	GRP
<b>Hull colour</b>	white
<b>Superstructure material</b>	GRP
<b>Deck material</b>	teak
<b>Cockpit deck finish</b>	teak
<b>Radar arch</b>	yes
<b>Fuel tank (litre)</b>	3000 L
<b>Level indicator (fuel tank)</b>	yes
<b>Freshwater tank (litre)</b>	750 L
<b>Level indicator (freshwater)</b>	yes
<b>Blackwater tank (litre)</b>	150 L
<b>Level indicator (blackwater)</b>	yes
<b>Extra info</b>	Armani Casa interieur
<b>Extra info</b>	Interior wood in Black American Walnut satin finish

## ACCOMMODATION

<b>Cabins</b>	3
<b>Berths</b>	6
<b>Deck saloon</b>	yes
<b>Saloon</b>	yes
<b>Air-conditioning</b>	For Deck saloon 2 x 16000BTU / in cabins 8000/16000/10000 BTU
<b>Sliding door to cockpit</b>	yes



# SUNSEEKER PREDATOR 60

Galley	yes
Countertop	yes
Sink	yes
Cooker	induction
Oven	yes
Fridge	yes
Freezer	Isotherm DRSSF Drawer fitted ion the lower lobby
Dishwasher	Miele 220V Slimline G5985SCVi
Crockery	yes
Owners cabin	double bed
Bed length (m)	2m
Wardrobe	yes
Bathroom	yes
Toilet	yes
Toilet system	electric
Wash basin	yes
Shower	yes
Guest cabin 1	double bed
Bed length (m)	2m
Wardrobe	yes
Bathroom	yes
Toilet	yes
Toilet system	electric
Wash basin	yes
Shower	yes
Guest cabin 2	twin single
Bed length (m)	yes
Wardrobe	yes
Washing machine/dryer combi	Miele, fitted under the galley refrigerator
Wet bar	Additional Wet bar located aft the sliding doors
Tender garage	Large garage to take a 3,2 meter tender



# SUNSEEKER PREDATOR 60

## MACHINERY

No of engines	2
Make	MAN
Type	V12
HP	1200
kW	883.20
Fuel	diesel
Maximum speed (kn)	33
Cruising speed (kn)	25
Engine hours	950
Gearbox	yes
Bowthruster	Sleipner SE170/250TC-24V - 10.7hp
Manual bilge pump	yes
Electric bilge pump	yes
Bilge alarm	yes
Generator	Upgraded to Kohler 13kw 50Hz
Batteries	yes
Service battery	yes
Electric engine battery	yes
Generator battery	yes
Battery charger	yes
Shorepower	with cable
Stabilizers	Seakeeper 9 gyro (new in 2024)

## NAVIGATION

Compass	yes
Depth sounder/log	yes
VHF	yes
Autopilot	yes
Radar/GPS/plotter	Raymarine Windscreen - Raystar 125 GPS Diff receiver
AIS transceiver	yes



# SUNSEEKER PREDATOR 60

<b>Navigation lights</b>	yes
<b>Searchlight</b>	Sanshin Twin Beam Remote controlled

## EQUIPMENT

<b>Cockpit cover</b>	yes
<b>Bimini</b>	In black sunbrella on foredeck
<b>Cockpit cushions</b>	yes
<b>Cockpit table</b>	yes
<b>Gangway</b>	yes
<b>Anchor</b>	Lewmar anchor winch upgrade
<b>Anchor chain</b>	yes
<b>Deck wash</b>	Fresh water with outlets fwd & aft including deck wash hose kit
<b>Fenders</b>	yes
<b>Mooring lines</b>	yes
<b>TV</b>	yes
<b>Radio</b>	yes
<b>Surround Sound System</b>	Bose Lifestyle 48 DVD/CD linked to master cabin TV



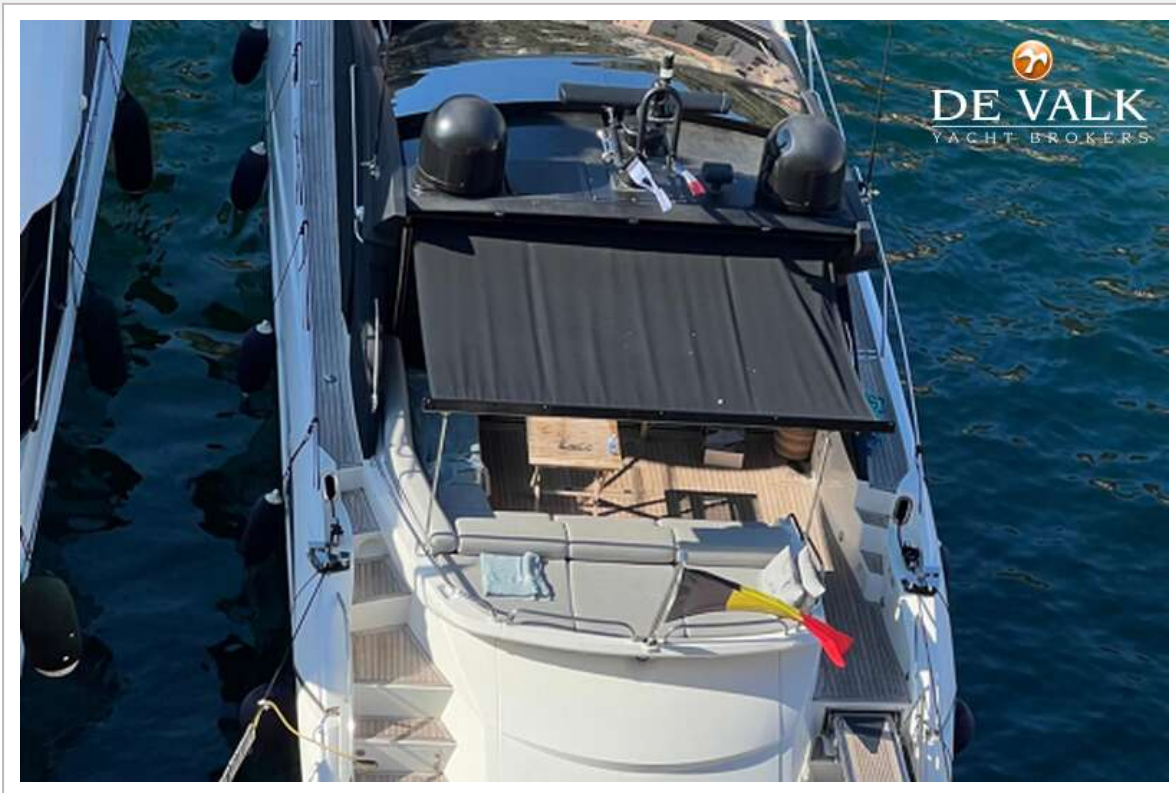
# SUNSEEKER PREDATOR 60



# SUNSEEKER PREDATOR 60



# SUNSEEKER PREDATOR 60



# SUNSEEKER PREDATOR 60



# SUNSEEKER PREDATOR 60



# SUNSEEKER PREDATOR 60



# SUNSEEKER PREDATOR 60



# SUNSEEKER PREDATOR 60



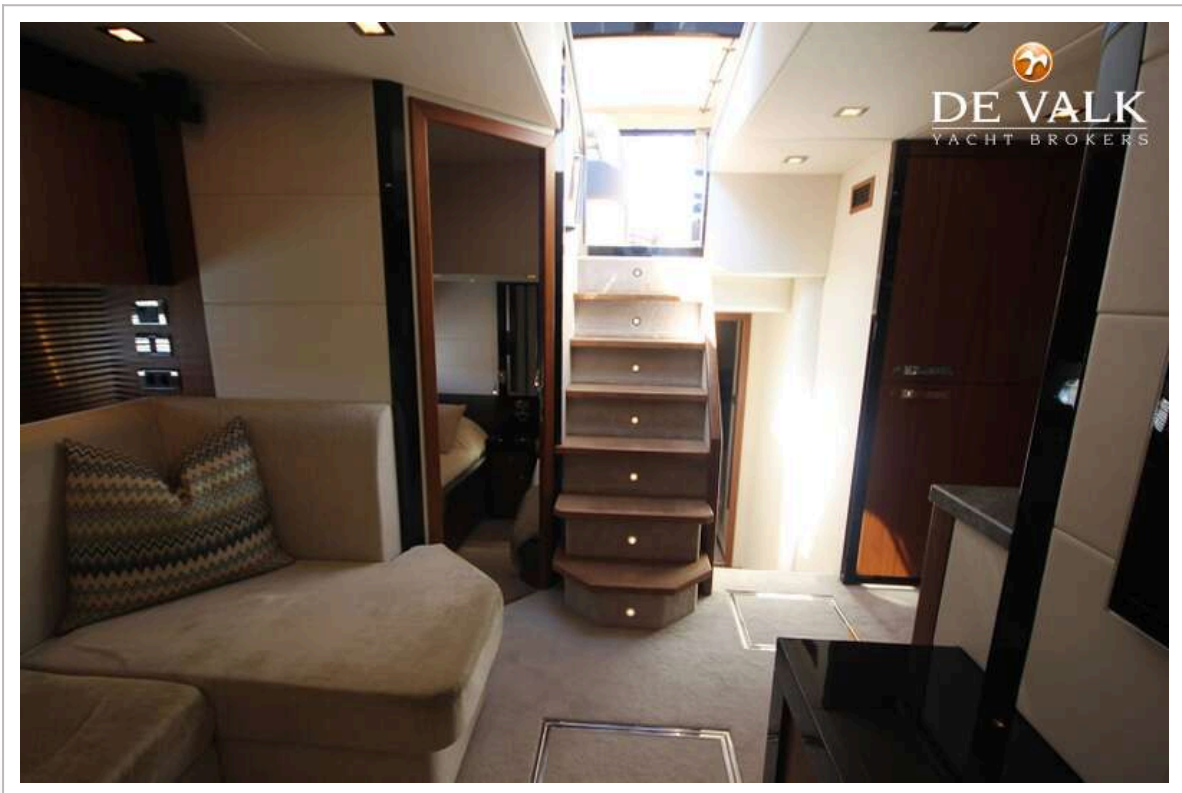
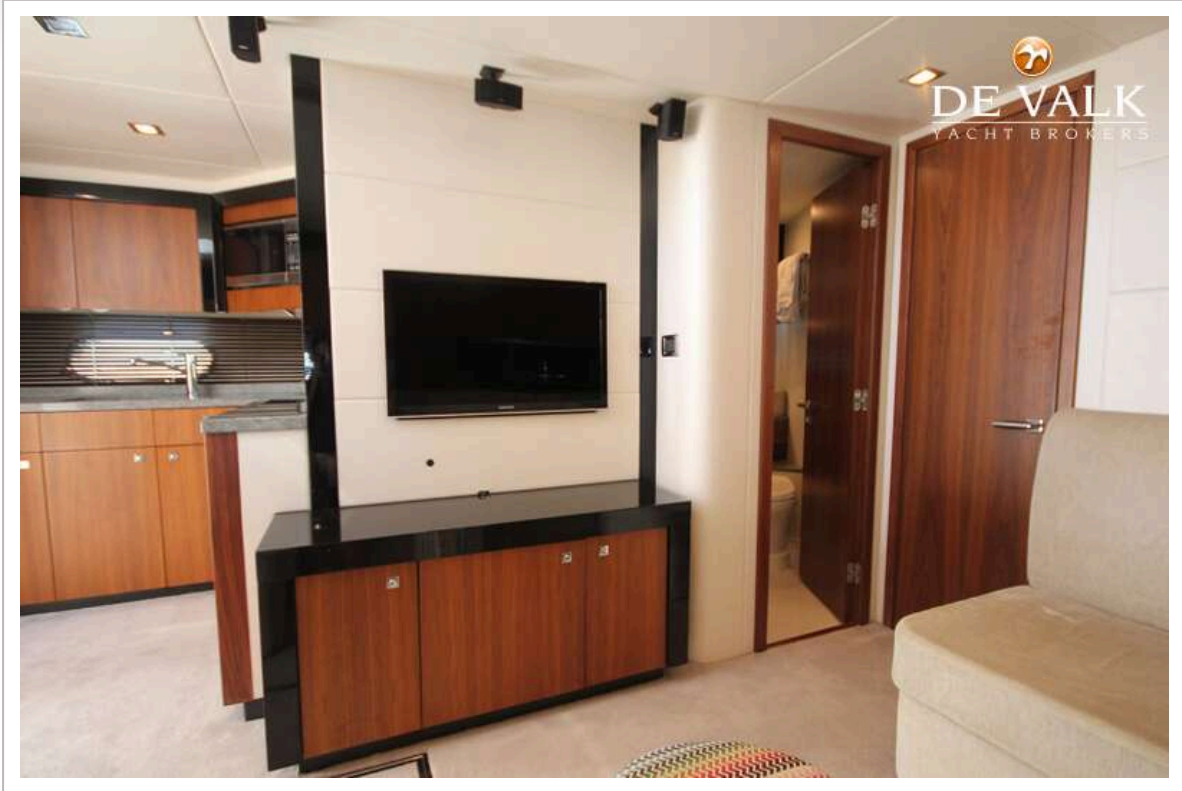
# SUNSEEKER PREDATOR 60



# SUNSEEKER PREDATOR 60



# SUNSEEKER PREDATOR 60



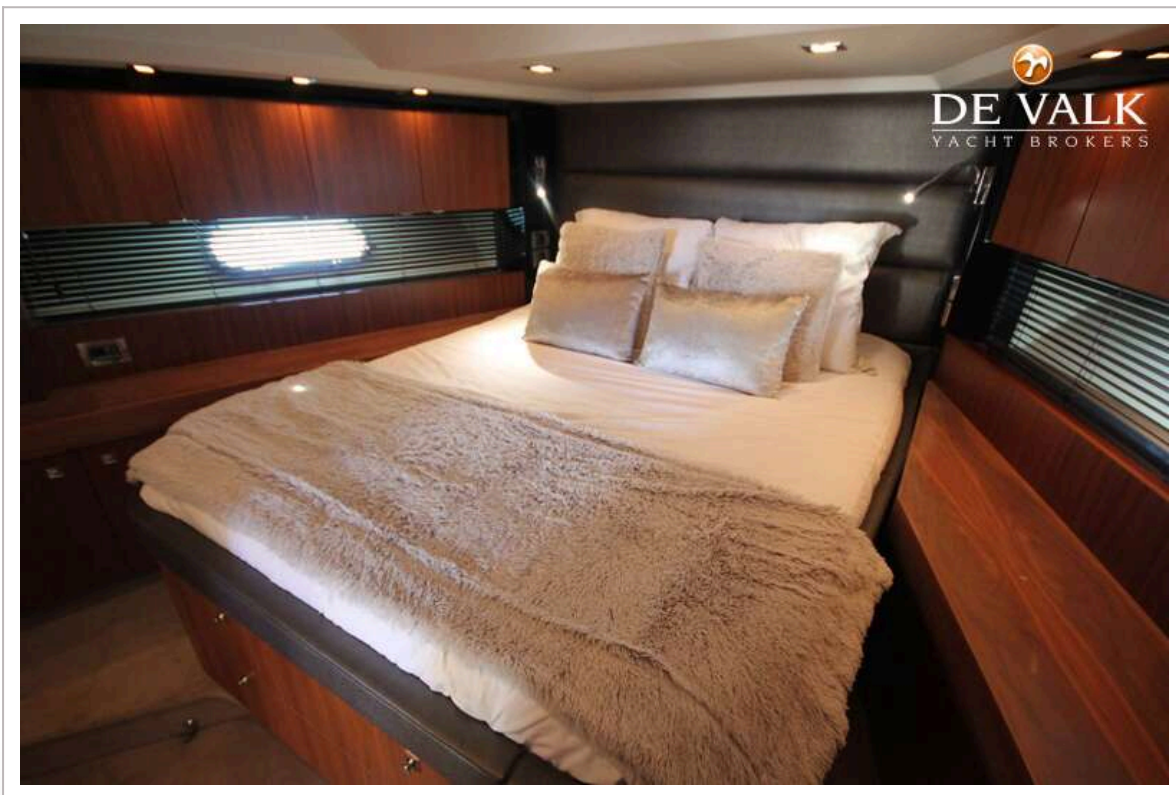
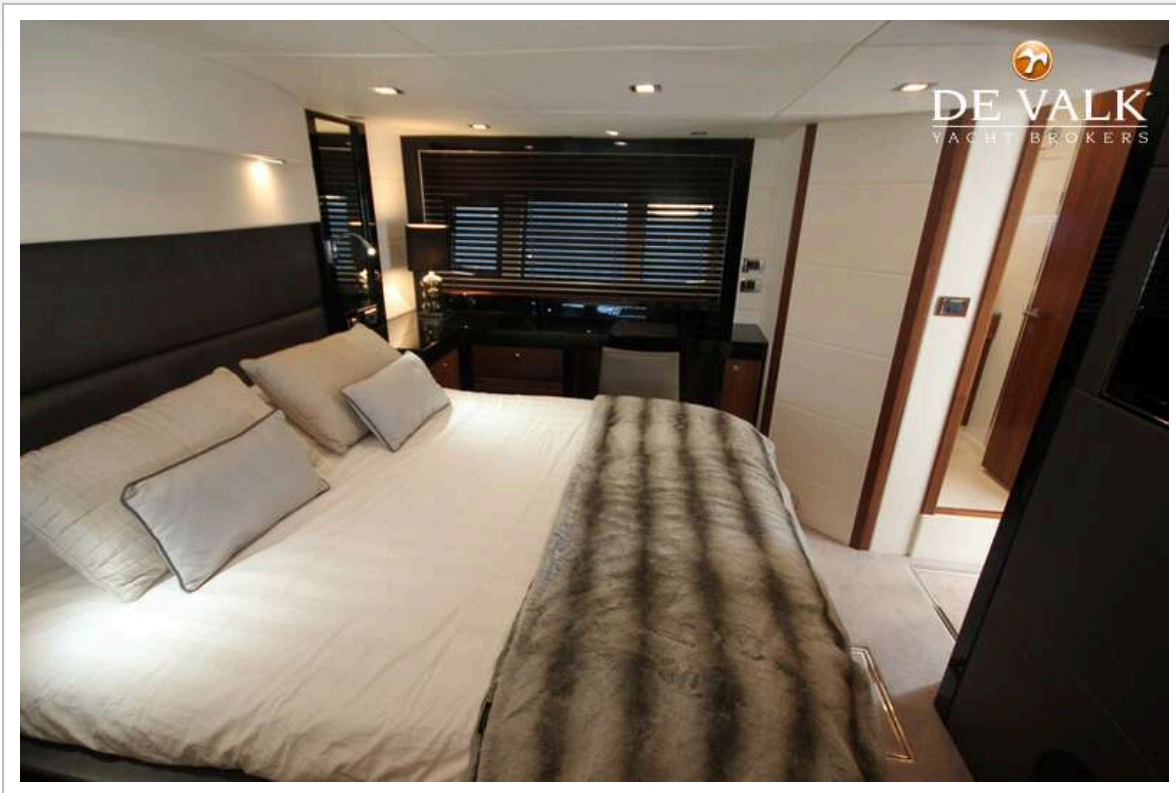
# SUNSEEKER PREDATOR 60



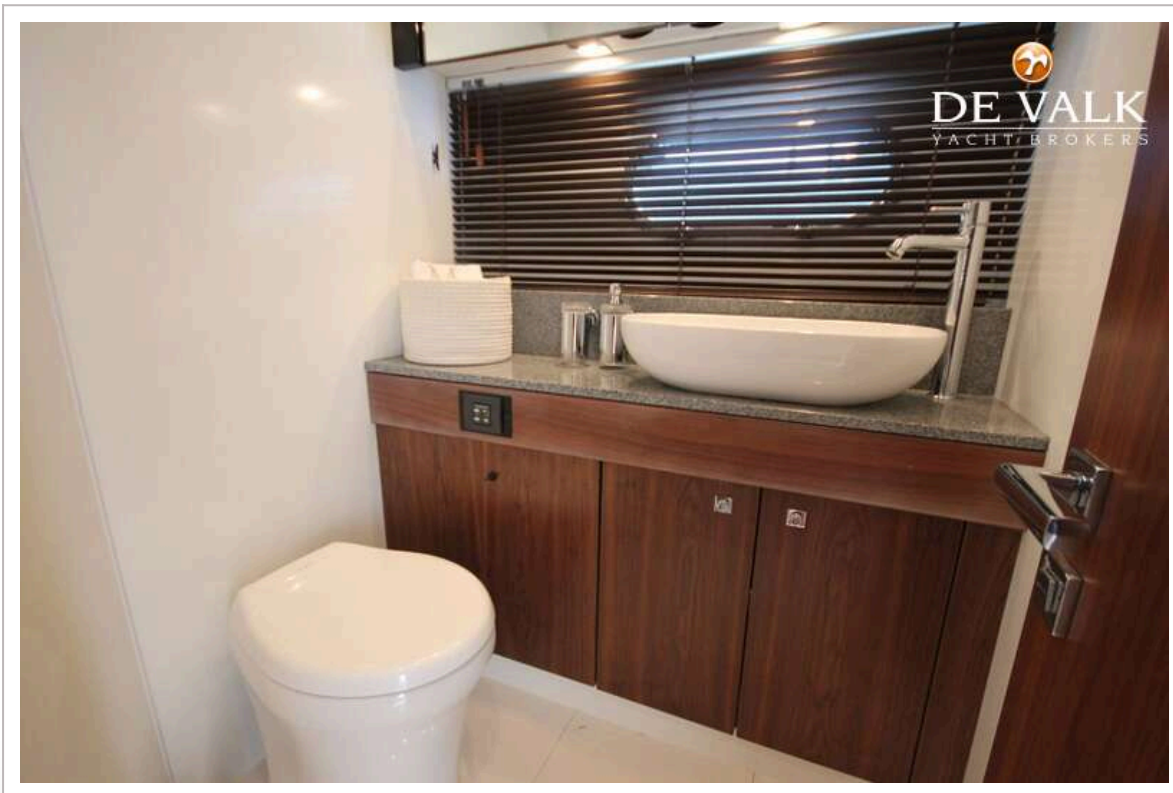
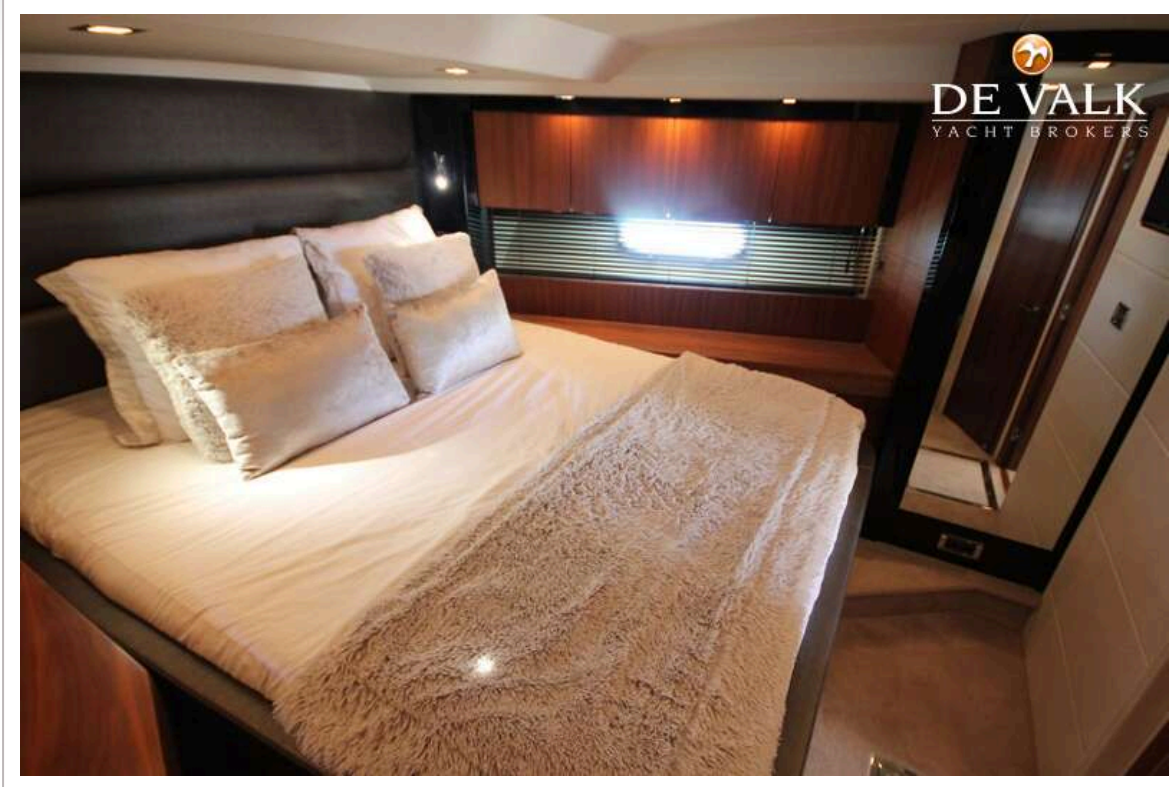
# SUNSEEKER PREDATOR 60



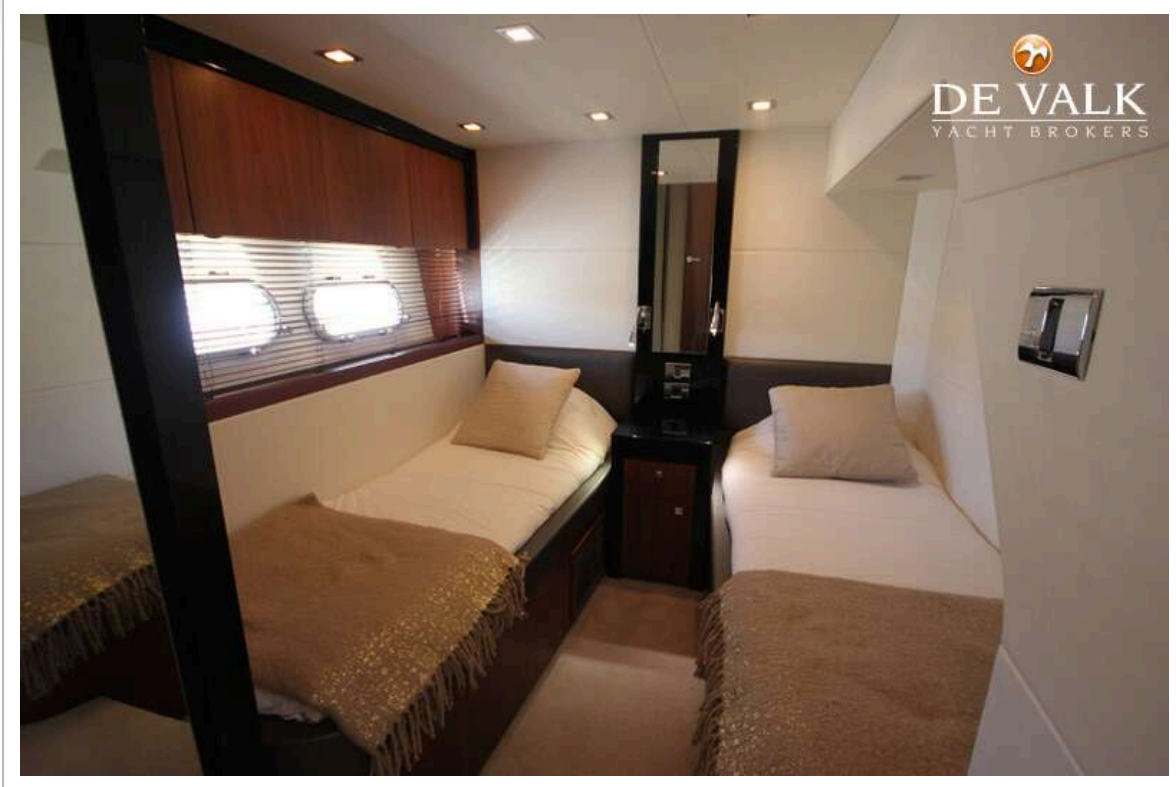
# SUNSEEKER PREDATOR 60



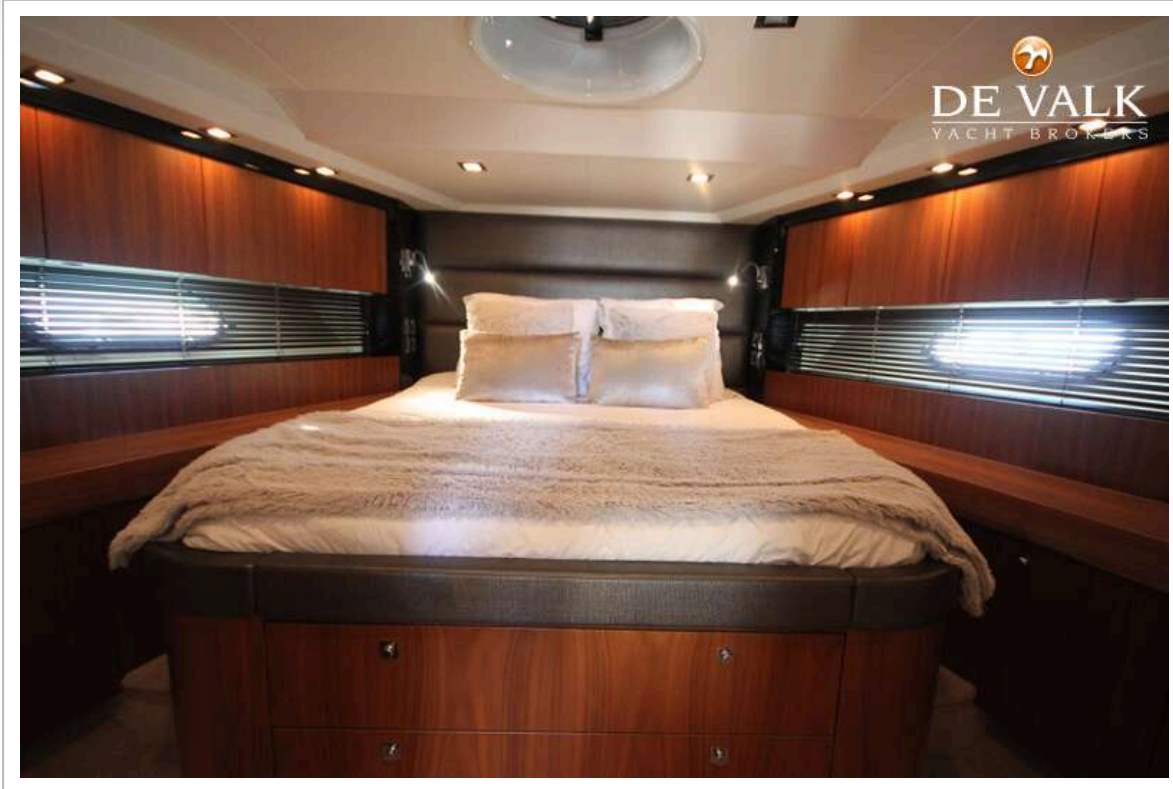
# SUNSEEKER PREDATOR 60



# SUNSEEKER PREDATOR 60



# SUNSEEKER PREDATOR 60



# SUNSEEKER PREDATOR 60

