



DE VALK
YACHT BROKERS



HANSE 400



DE VALK
YACHT BROKERS

HANSE 400

BROKER'S COMMENTS

This Hanse 400 represents an excellent value for buyers seeking a performance cruiser fully upgraded and ready to sail. The extensive 2024 refit significantly enhances reliability, comfort, and resale value. ? Fast, safe, and easy to sail ? Ideal for cruising, fast cruising, and club racing ? Turnkey condition – no immediate investments required

Nico Stillitano

SPECIFICATIONS

Dimensions	11.99 x 4.04 x 2.05 (m)	Builder	Hanse Yachts A.G.
Built	2010	Cabins	3
Material	GRP	Berths	2
Engine(s)	1 x Yanmar 3JH5E	Hp/Kw	28.00 (hp), 20.61 (kw)
Asking price	€ 160.000 (VAT Paid)	Lying	Italy

CONTACT

Sales office	De Valk Rome	Telephone	+39 06 65 81221
Address	c/o Nautilus Marina Srl, Via Monte Cadria, 127 00054 Fiumicino Roma IT	E-mail	rome@devalk.nl

DISCLAIMER

These particulars are given in good faith as supplied but cannot be guaranteed.



GENERAL

Model	HANSE 400
Type	sailing yacht
LOA (m)	11,99
LWL (m)	10,80
Beam (m)	4,04
Draft (m)	2,05
Year built	2010
Launched	2010
Builder	Hanse Yachts A.G.
Country	Italy
Designer	Judel&wrolik
Displacement (t)	8,4
CE norm	A
Hull material	GRP
Hull colour	grey
Keel type	bulb keel
Deck material	GRP
Deck finish	teak
Superstructure deck finish	teak
Cockpit deck finish	teak
Antifouling (year)	2025
Fuel tank (litre)	polyethylene 140
Fuel tank 2 (litre)	polyethylene
Level indicator (fuel tank)	yes
Freshwater tank (litre)	polyethylene 300
Level indicator (freshwater)	yes
Blackwater tank (litre)	polyethylene 20
Blackwater tank extraction	deck extraction + uw line

ACCOMMODATION



HANSE 400

Cabins	3
Berths	2
Interior	mahogany
Floor	wood
Saloon	Spacious saloon with U-shaped sofa
Heating	diesel ducted hot air
Chart table	Yes
Galley	White worktop Double stainless-steel sink 2-burner gas stove with oven Extra-large 12V refrigerator (approx. 130 L) Ample storage
Sink	stainless steel
Cooker	calor gas
Oven	Yes
Fridge	Extra-large 12V refrigerator (approx. 130 L)
Hot water system	220V + engine
Owners cabin	double bed
Bathroom	en suite
Toilet	en suite

MACHINERY

No of engines	1
Make	Yanmar
Type	3JH5E
HP	28
kW	20.61
Year of overhaul	2024
Engine hours	300
Engine cooling system	seawater
Drive	sail-drive
Saildrive seal	2024
Bowthruster	electric Retractable 24V bow thruster
Propeller type	folding



Propeller blades	3
Electric bilge pump	yes
Batteries	yes
Start battery	yes
Service battery	yes
Bowthruster battery	yes
Battery monitor	yes
Battery charger	yes
Shorepower	with cable

NAVIGATION

Compass	Plastimo Olympic 135 Compass
Multi control display	Raymarine
VHF	yes
Autopilot	p70s Autopilot Raymarine
GPS	Axiom GPS Plotter Raymarine
Navigation lights	yes

EQUIPMENT

Sprayhood	yes
Bimini	yes
Cockpit table	yes
Gangway	yes
Deck shower	yes
Anchor	yes
Anchor chain	yes
Chain counter	yes
Windlass	electrical
Pushpit	yes
Pulpit	yes
Radar reflector	yes



Fenders	yes
Mooring lines	yes
Radio	yes
Surround Sound System	yes
Cockpit speakers	yes
Speakers in salon	yes
Fire extinguisher	yes

RIGGING

Rigging	sloop
Standing rigging	wire
Material mast	aluminium
Spreaders	2
Mainsail	Mainsail: North Sails, in-boom furling (2024)
Furling boom	Vigano'
Jib	Self-tacking jib: North Sails (2024)
Boomvang	gasspring
Primary sheet winch	Harken electric 1
Secondary sheet winch	manual 2



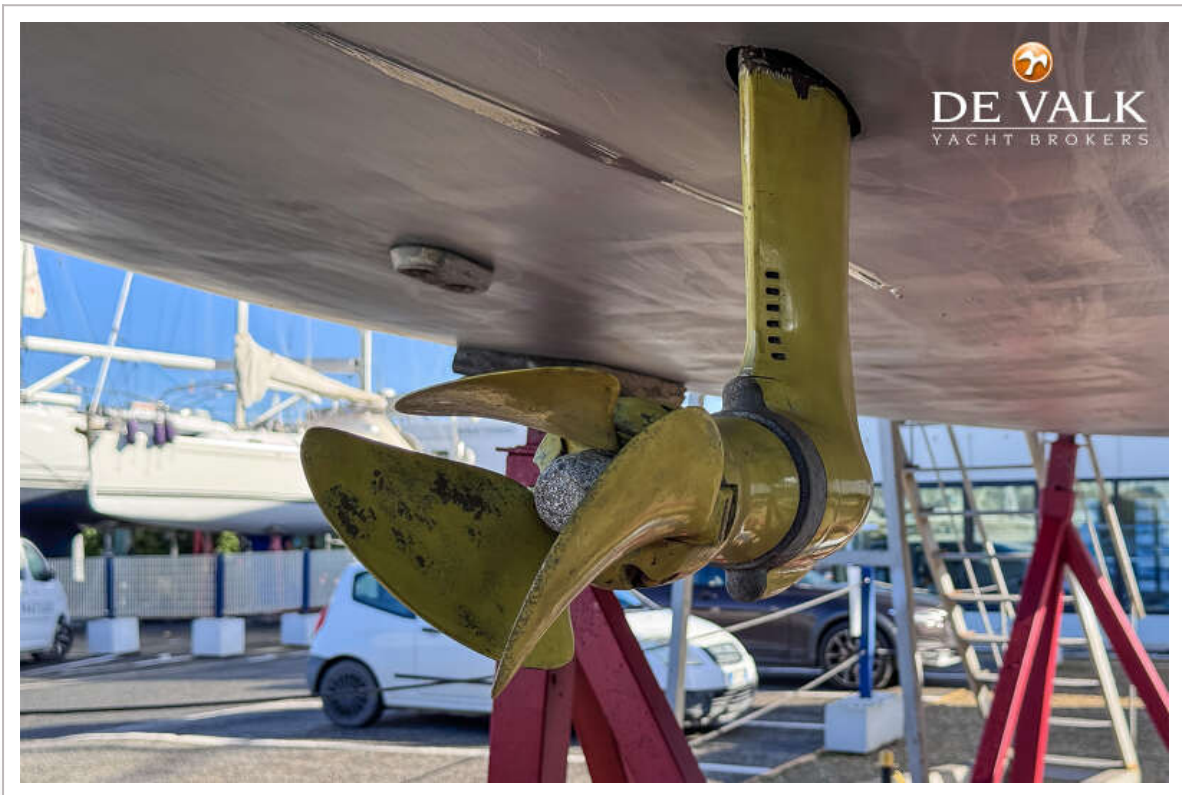
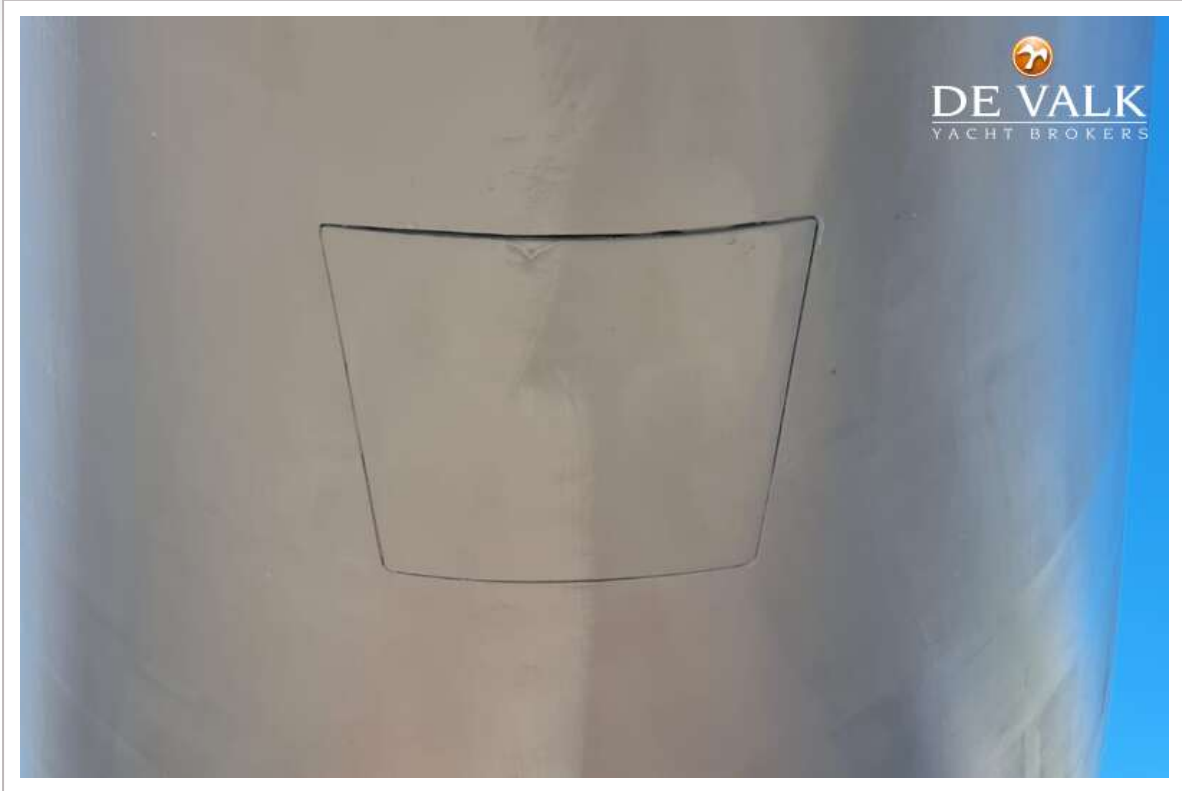
HANSE 400



HANSE 400



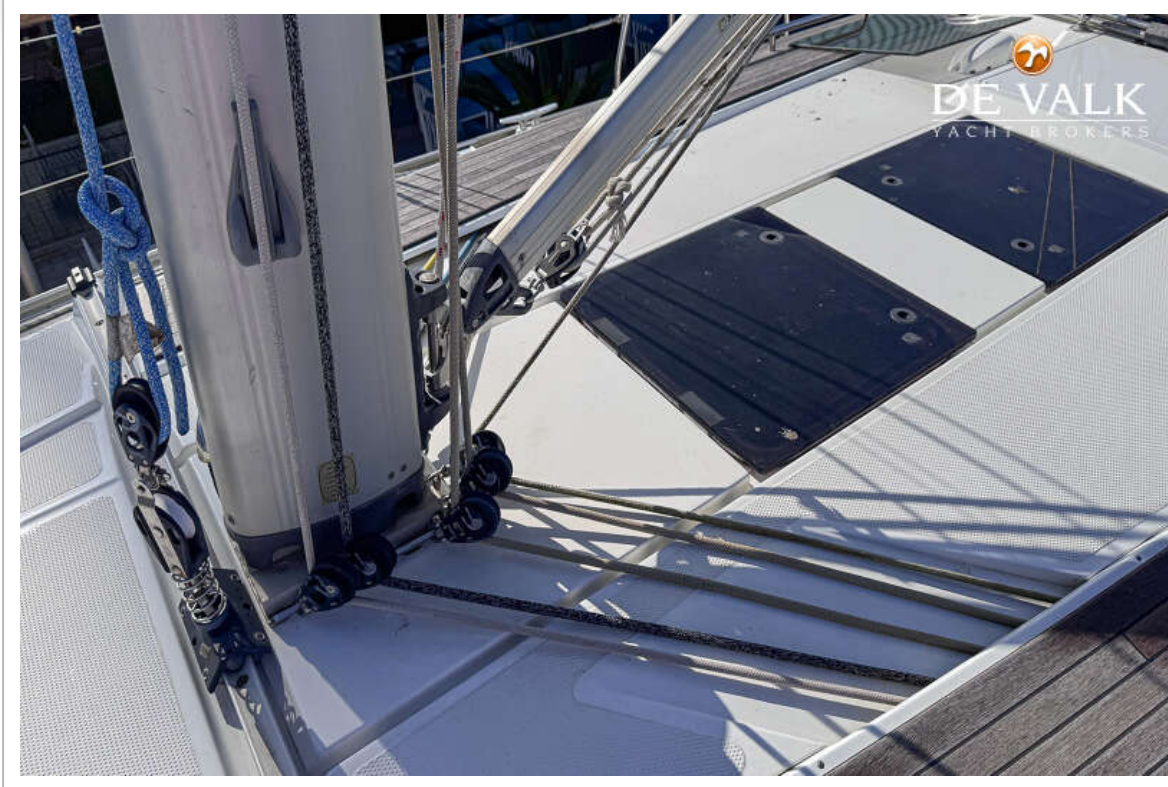




HANSE 400



HANSE 400



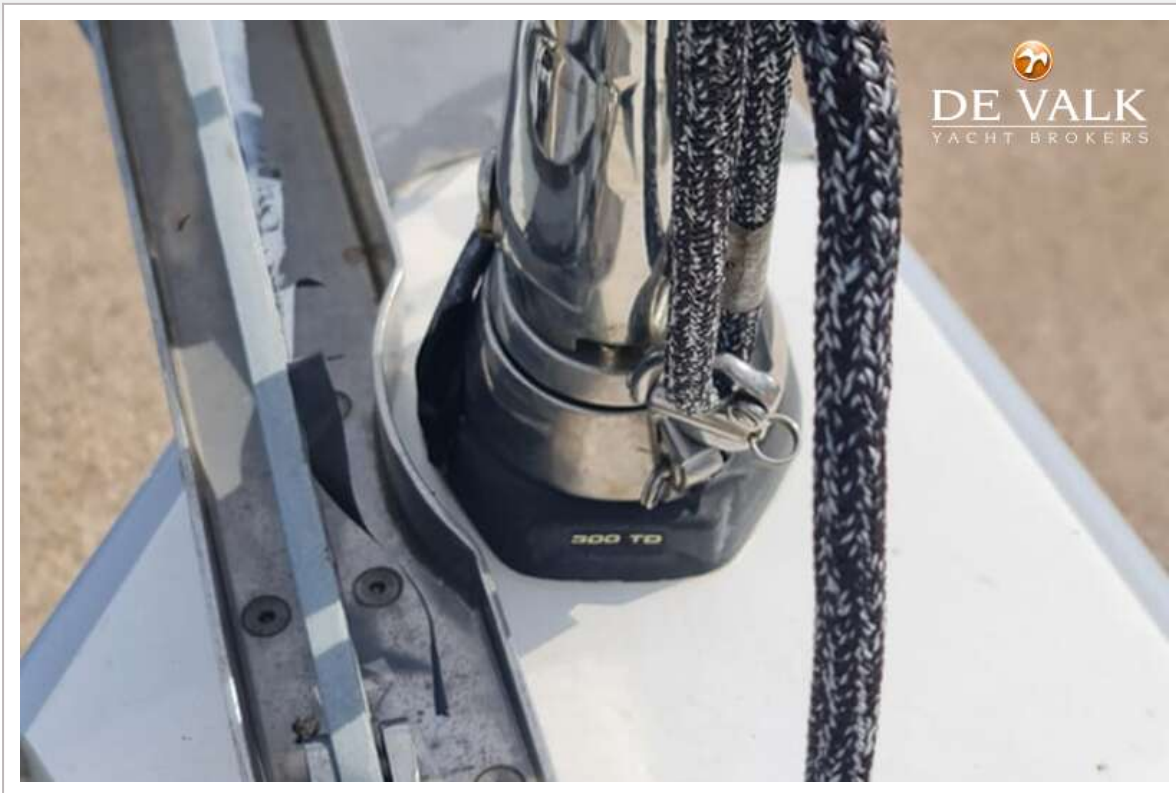
HANSE 400



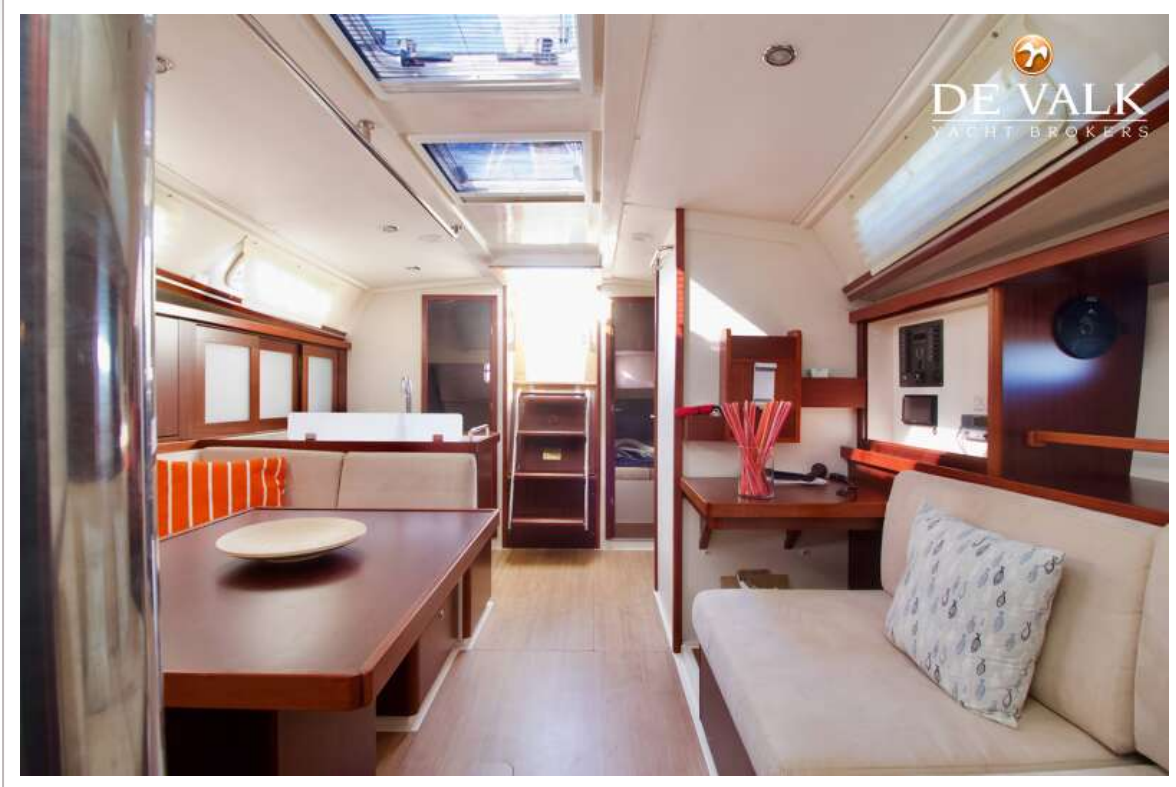
HANSE 400



HANSE 400



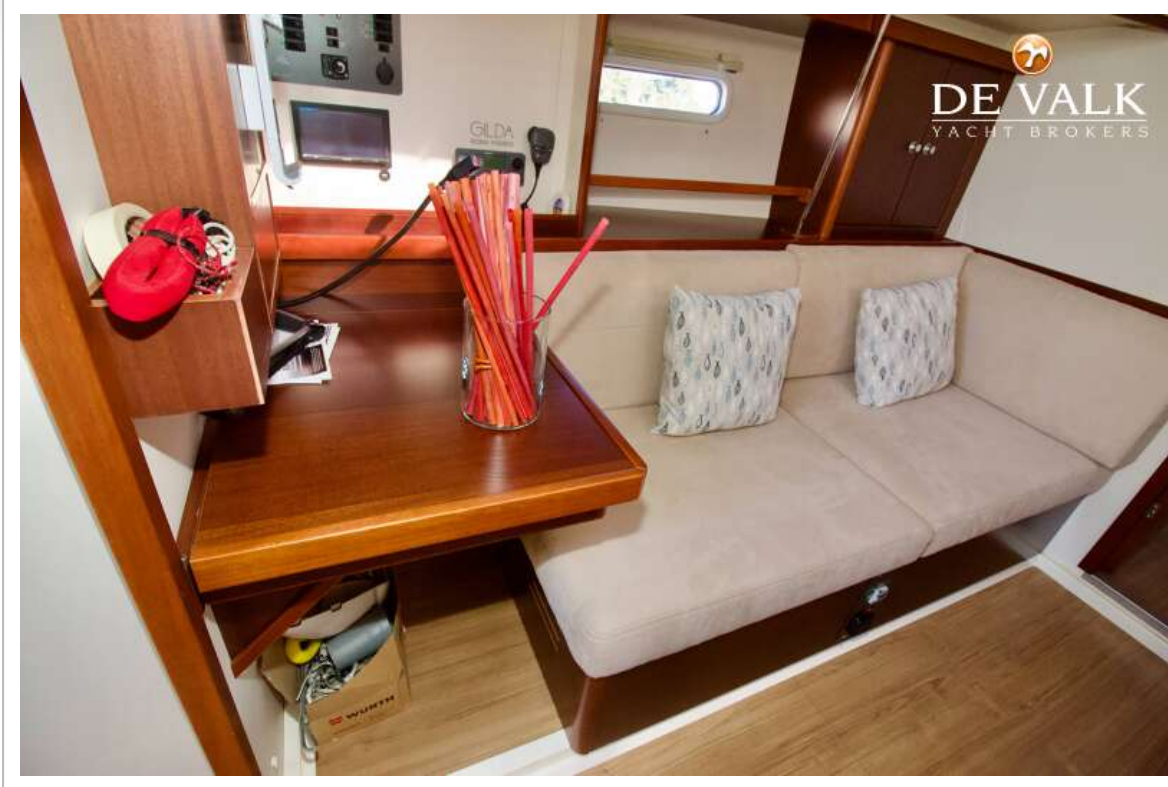
HANSE 400



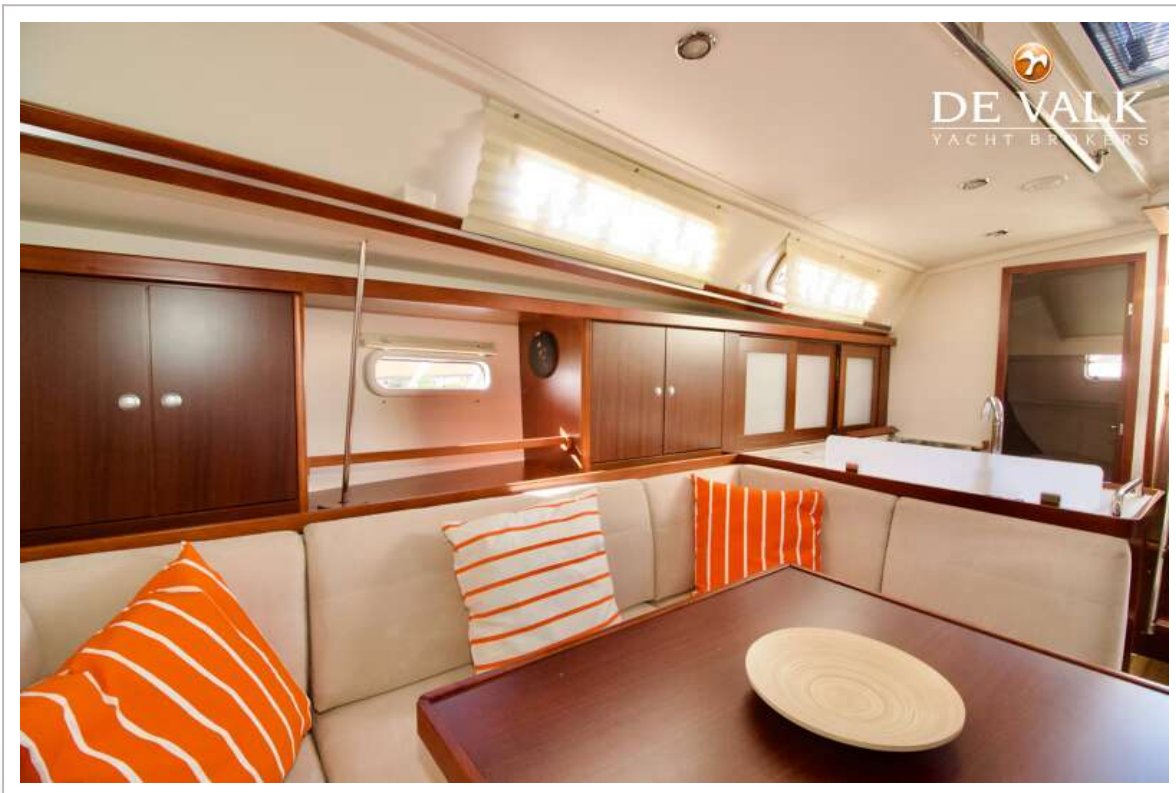
HANSE 400



HANSE 400



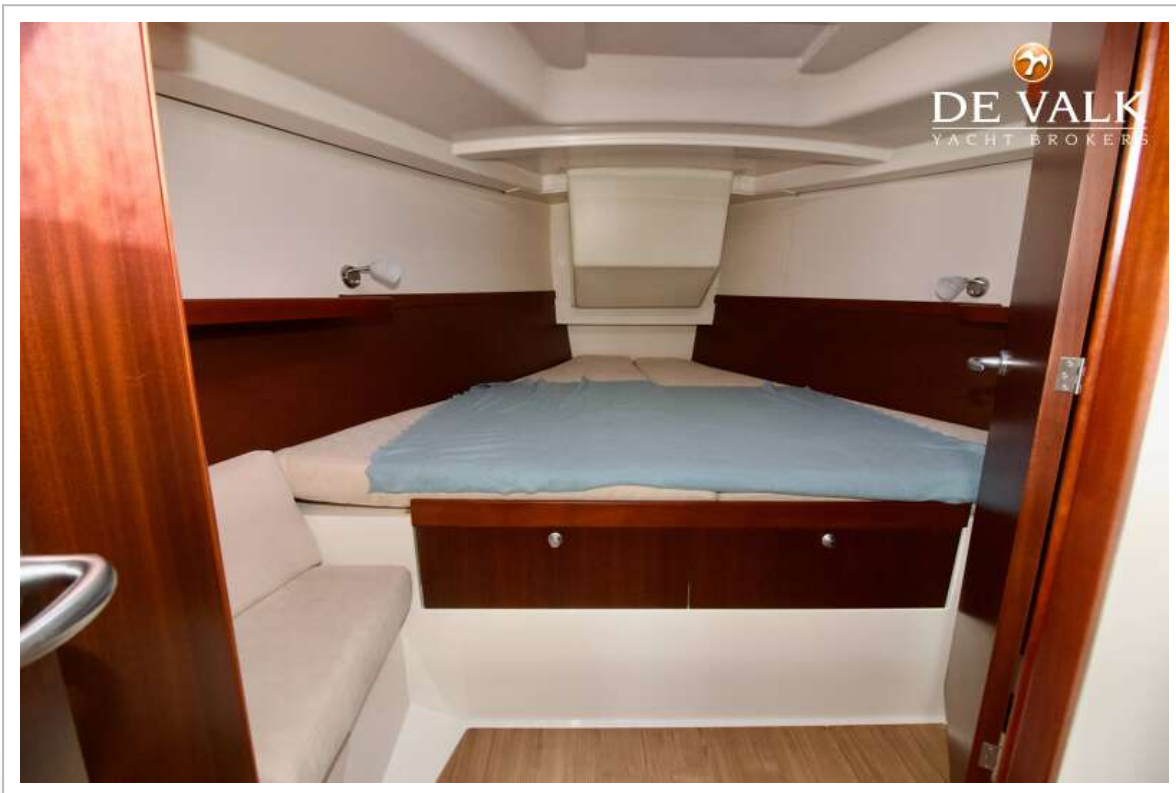
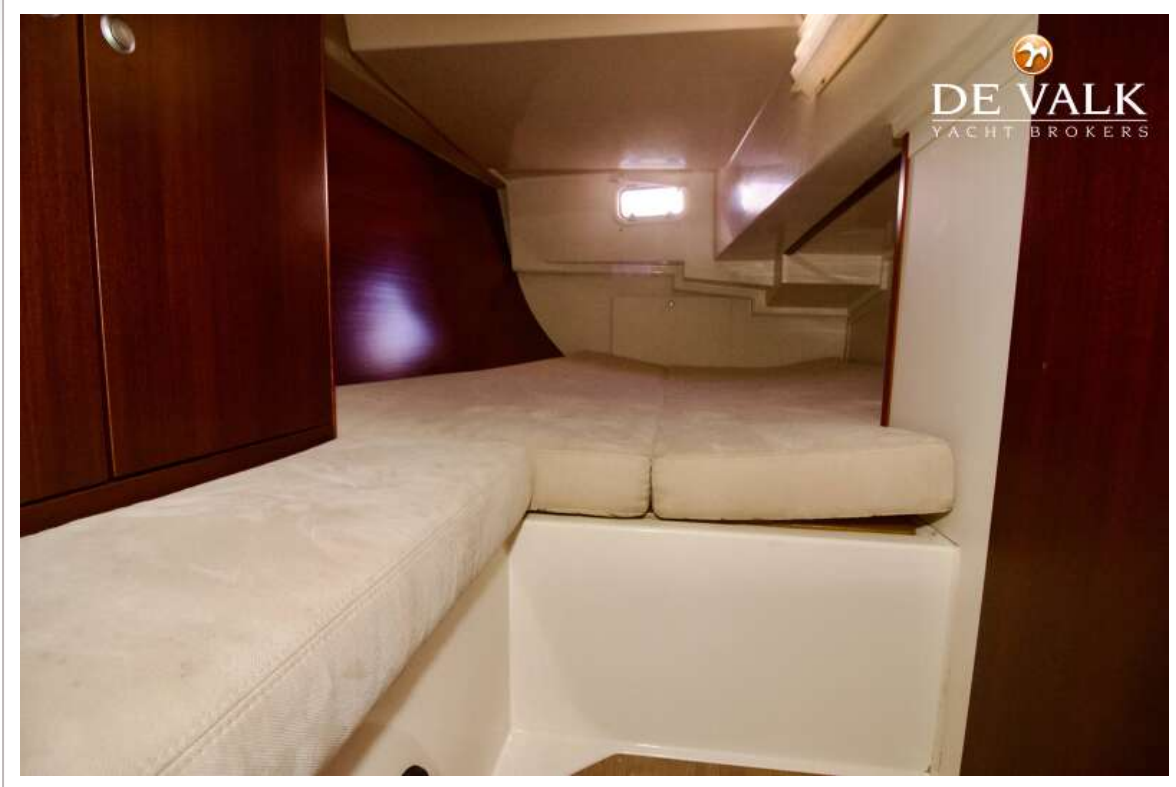
HANSE 400



HANSE 400



HANSE 400



HANSE 400

