



DE VALK
YACHT BROKERS



RO/RO PAX DOUBLE ENDED FERRY 90



DE VALK
YACHT BROKERS

RO/RO PAX DOUBLE ENDED FERRY 90

BROKER'S COMMENTS

RO/RO PAX Double Ended Ferry 90 m constructed in 2021. Capacity: 187 Cars, 500 Passengers. 2 A.B.C, engines 4 Generators (3 Baudouin, 1 Onan). 100 Nm limited allowed voyage according to Certificate of sea worthiness issued by the Republic of Turkey.

Sofia Iliia-Salvanou

SPECIFICATIONS

Dimensions	89.50 x 22.00 x 5.00 (m)	Builder	YALOVA TURKOGLU SHIPYARD
Built	2021	Cabins	
Material	Steel	Berths	
Engine(s)	2 x A.B.C. 6DZC-1000-166-A diesel	Hp/Kw	2 x 1,803.00 (hp), 1,327.01 (kw)
Asking price	€ 9.300.000 (VAT Not paid)	Lying	elsewhere / Not at sales office

CONTACT

Sales office	De Valk Corfu	Telephone	(+30) 6948681503
Address	New Port of Corfu, near Gouvia Marina 490 83 Corfu GR	E-mail	corfu@devalk.nl

DISCLAIMER

These particulars are given in good faith as supplied but cannot be guaranteed.



RO/RO PAX DOUBLE ENDED FERRY 90

GENERAL

Model	RO/RO PAX DOUBLE ENDED FERRY 90
Type	motor yacht
LOA (m)	89,50
Beam (m)	22,00
Draft (m)	5,00
Year built	2021
Builder	YALOVA TURKOGLU SHIPYARD
Country	Turkey
Designer	EDREK MARINE MOTOR CARRIERS COOPERATIVE
Gross tonnage	1998
Net tonnage	599
Hull material	steel
Hull colour	red
Antifouling (year)	2025
Fuel tank 2 (litre)	yes
Freshwater tank (litre)	yes
Blackwater tank (litre)	yes
Wheel steering	yes
Emergency tiller	yes
Extra info	CLASS: TURKISH LLOYDS (IACS)
Extra info	Construction lasted 17 months & costed 60.000.000 Turk Liras

MACHINERY

No of engines	2
Make	A.B.C.
Type	6DZC-1000-166-A
HP	1803
kW	1327.01
Fuel	diesel
Maximum speed (kn)	14

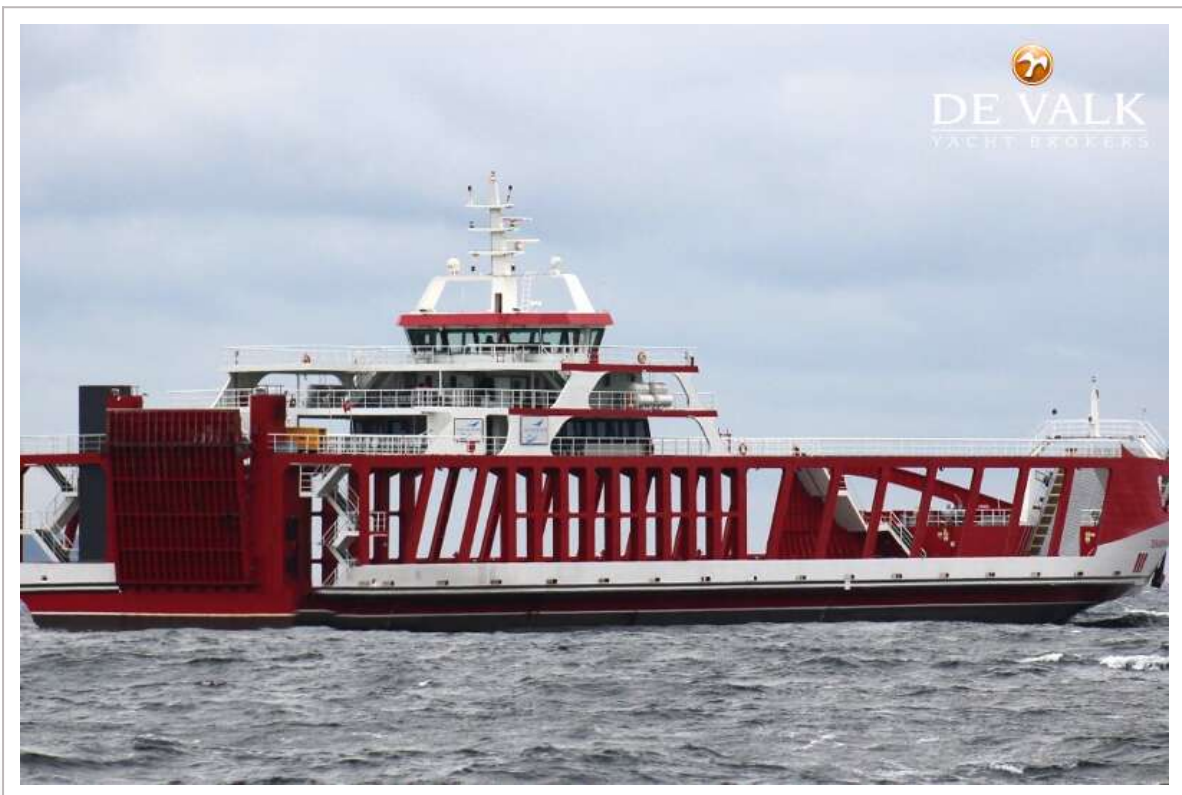


RO/RO PAX DOUBLE ENDED FERRY 90

Cruising speed (kn)	11
Consumption (l/hr)	300
Drive	shaft
Generator	BAUDOUIN 6W105S X 3
Generator 2	YUCHAI YC6TD800L-C20 X 1



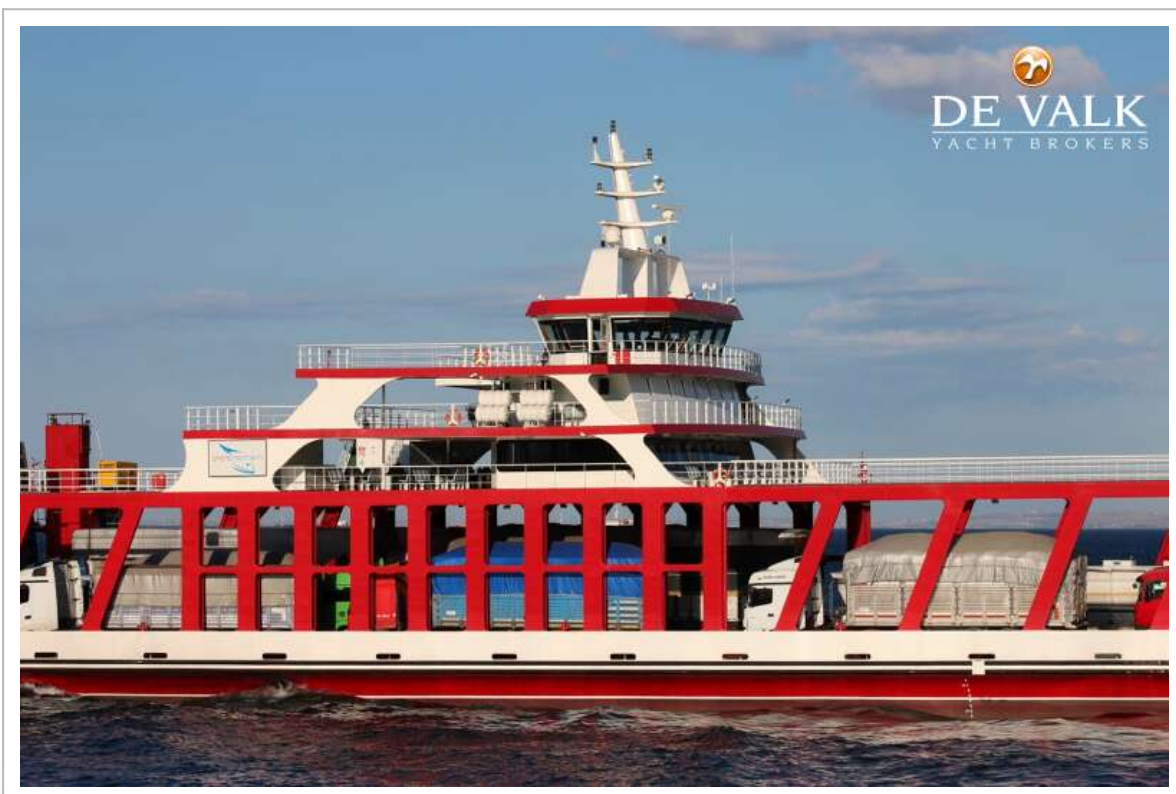
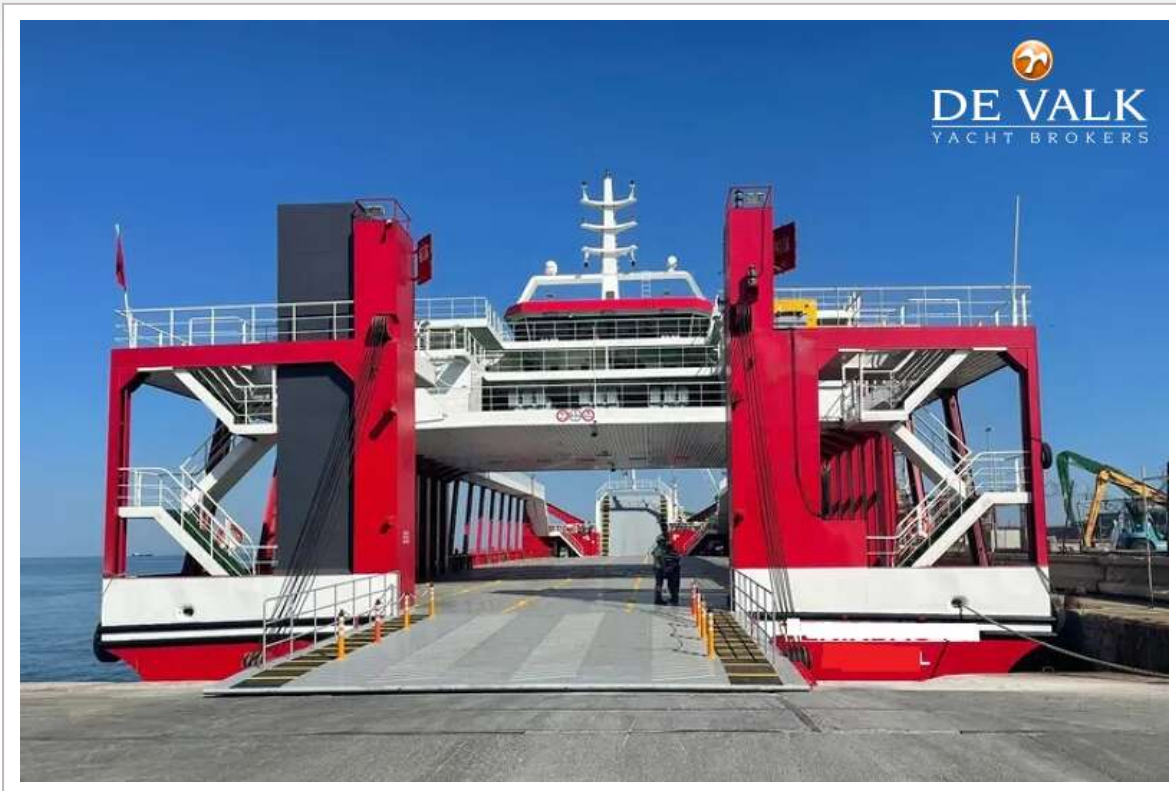
RO/RO PAX DOUBLE ENDED FERRY 90



RO/RO PAX DOUBLE ENDED FERRY 90



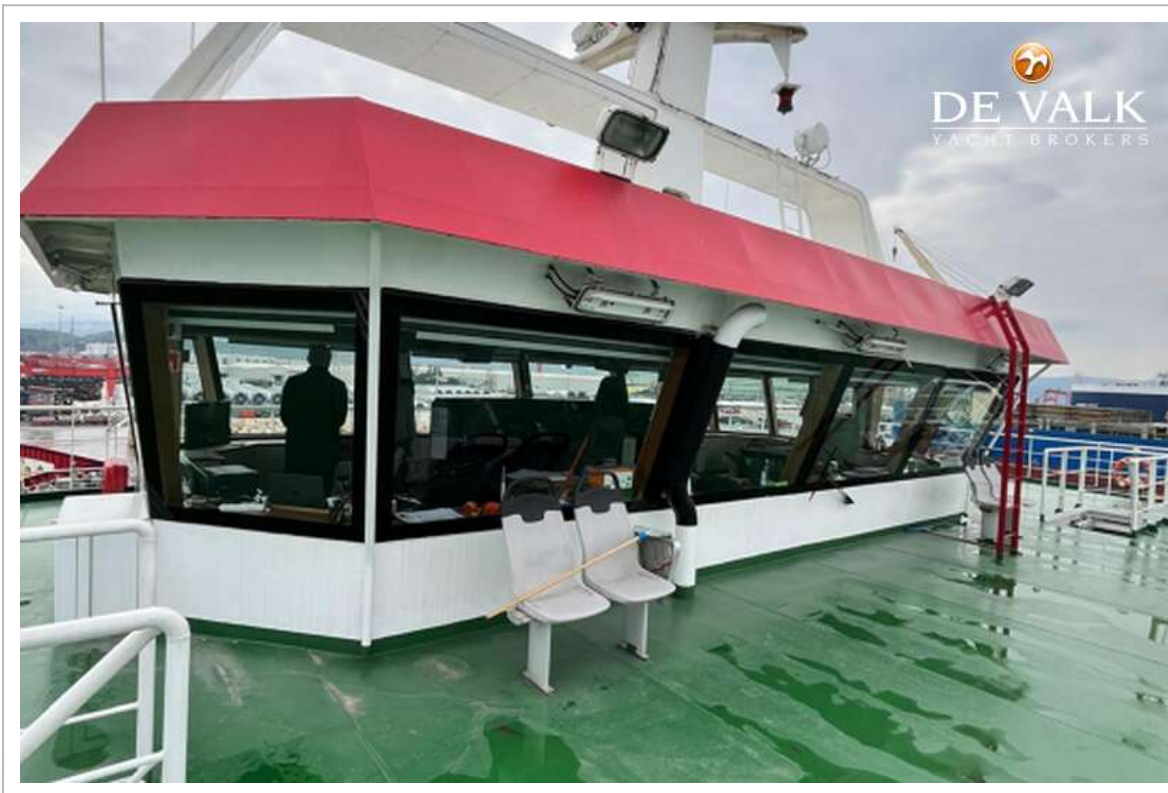
RO/RO PAX DOUBLE ENDED FERRY 90



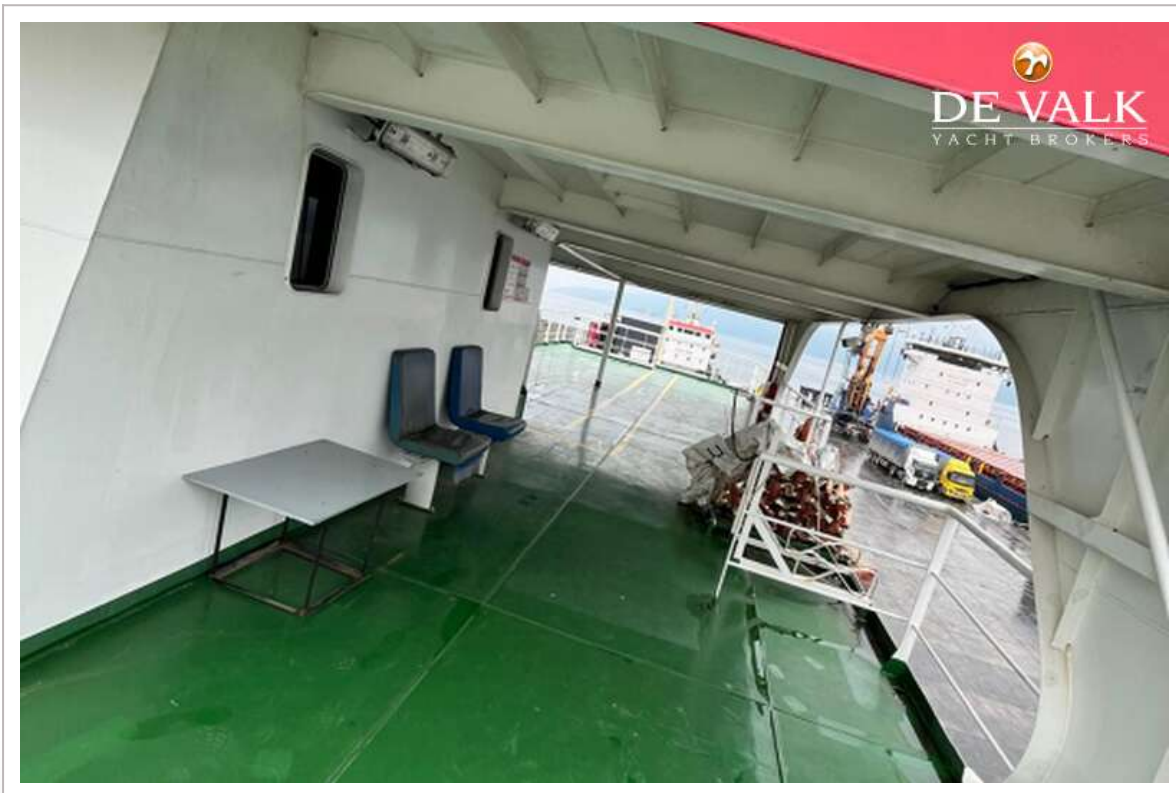
RO/RO PAX DOUBLE ENDED FERRY 90



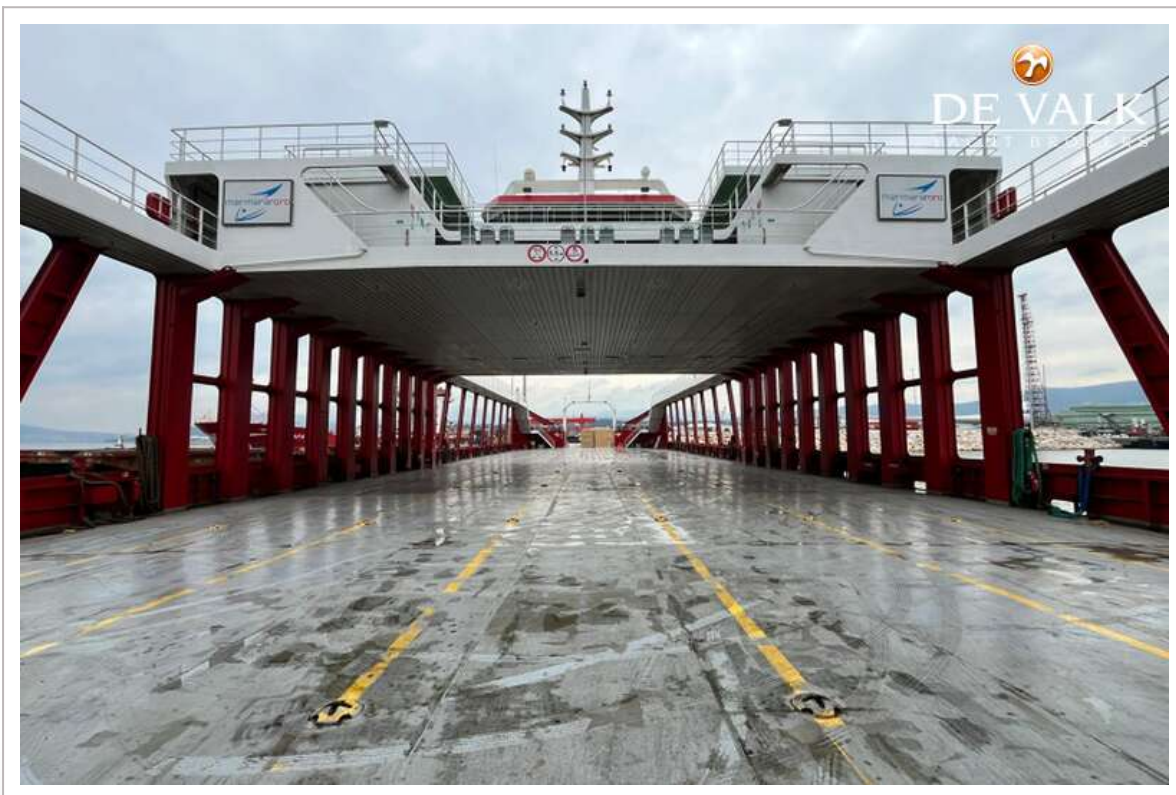
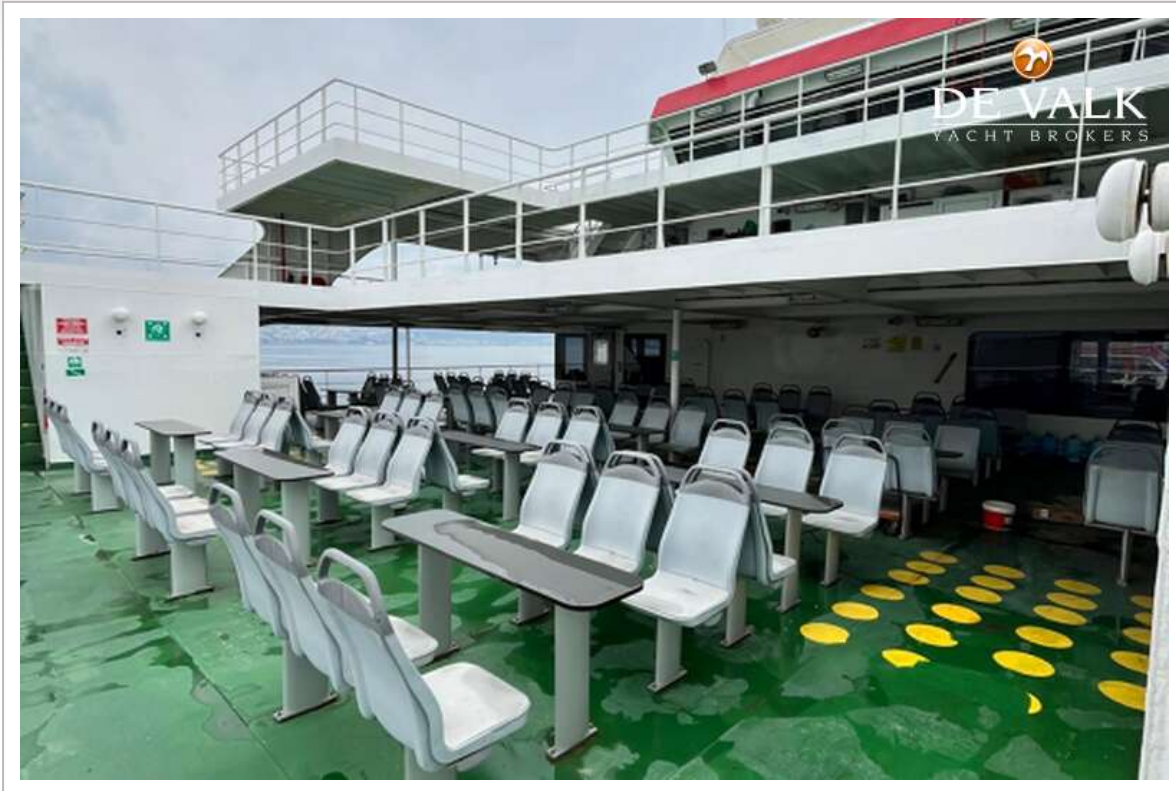
RO/RO PAX DOUBLE ENDED FERRY 90



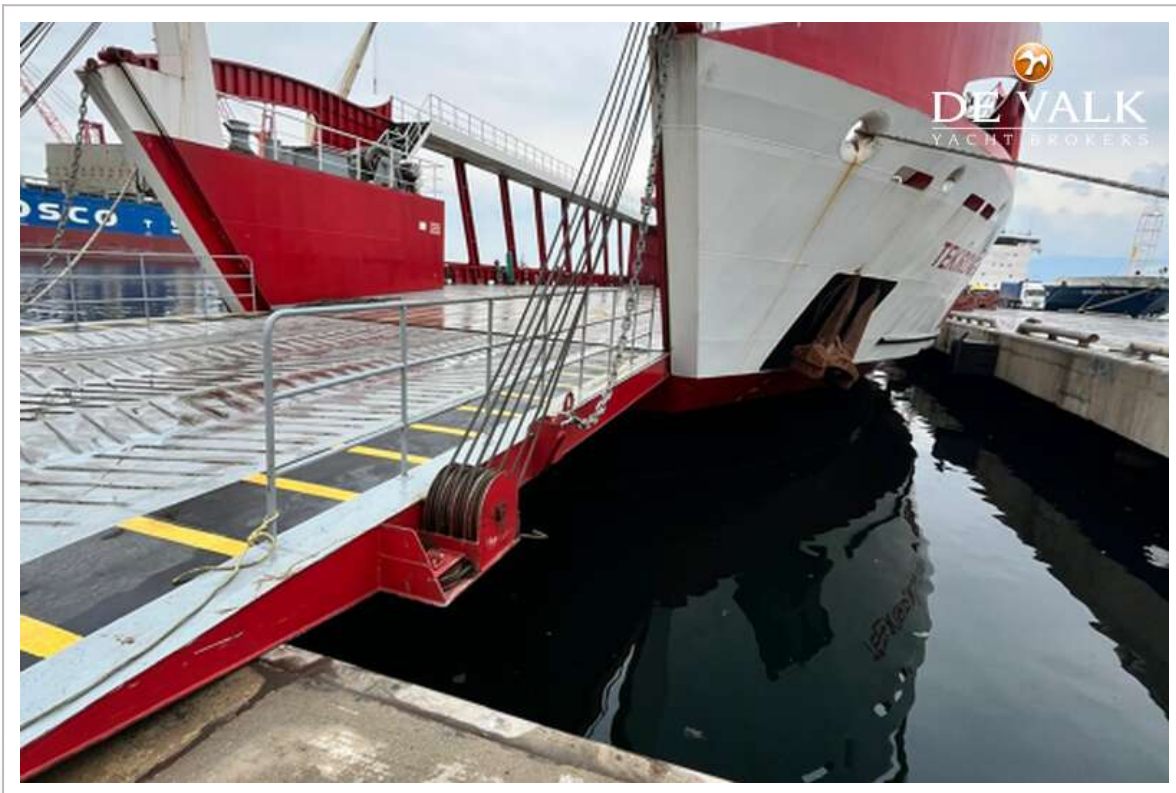
RO/RO PAX DOUBLE ENDED FERRY 90



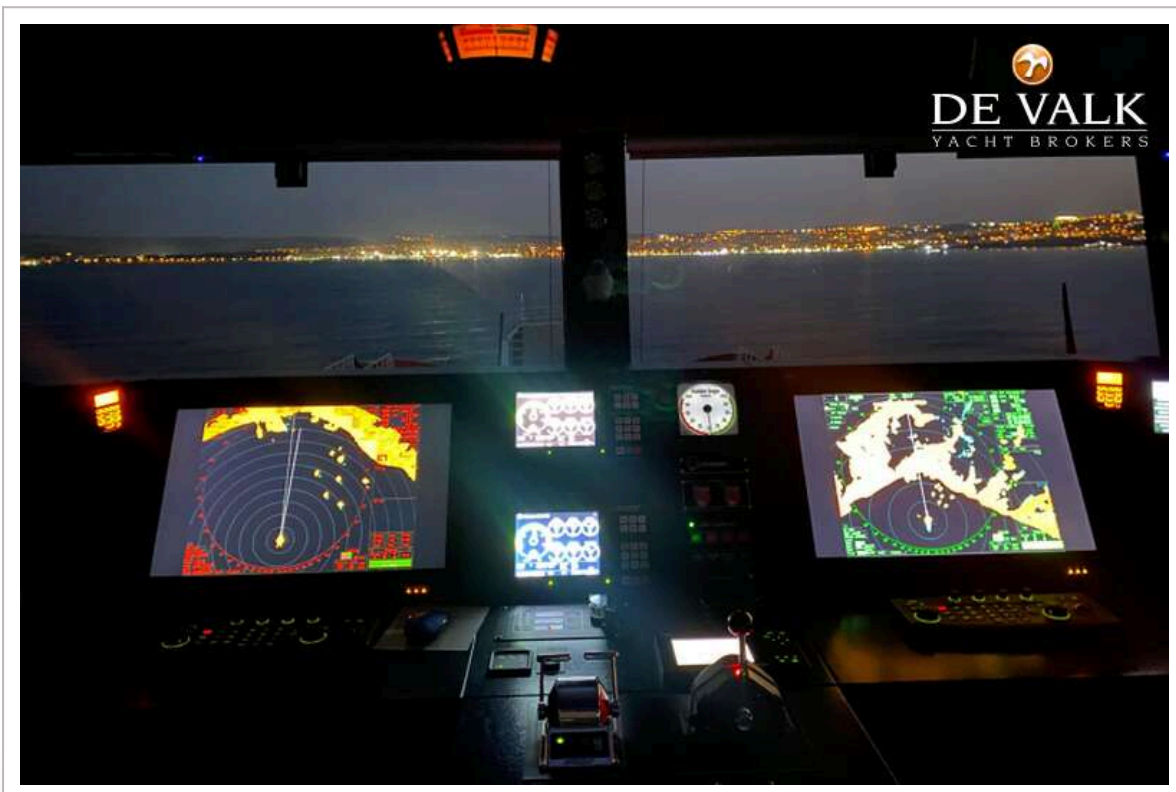
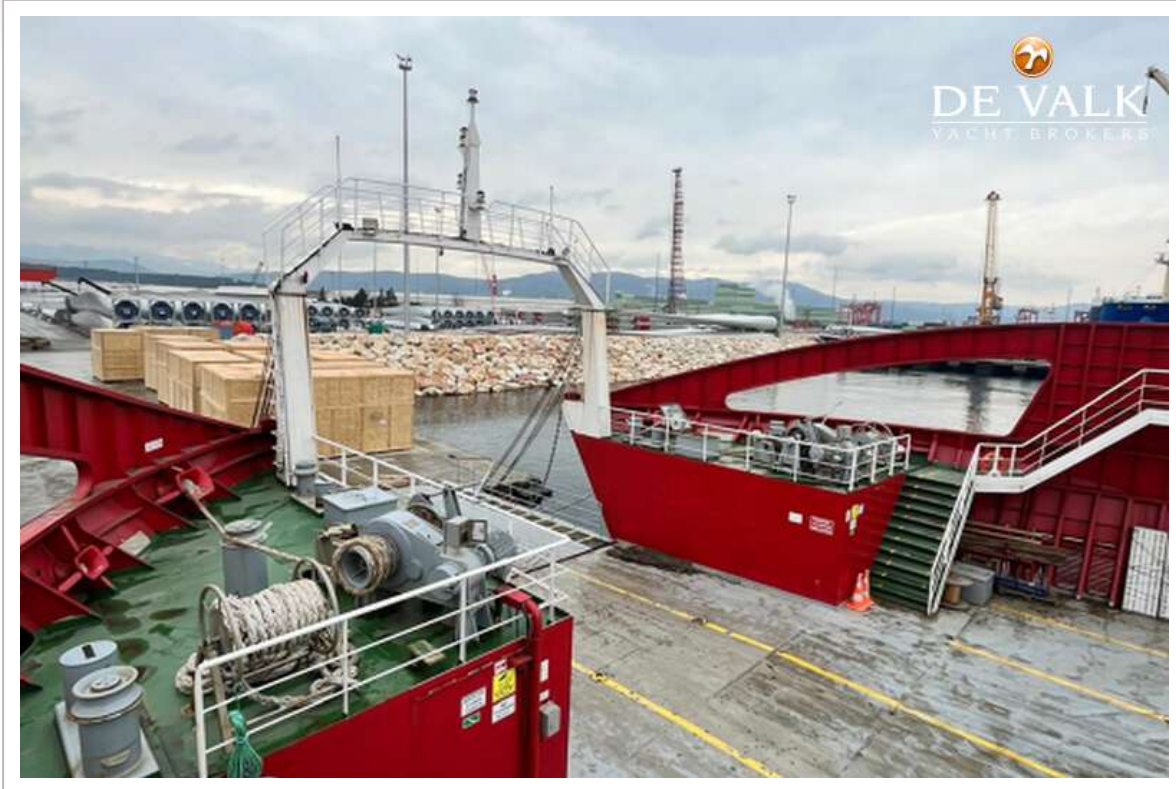
RO/RO PAX DOUBLE ENDED FERRY 90



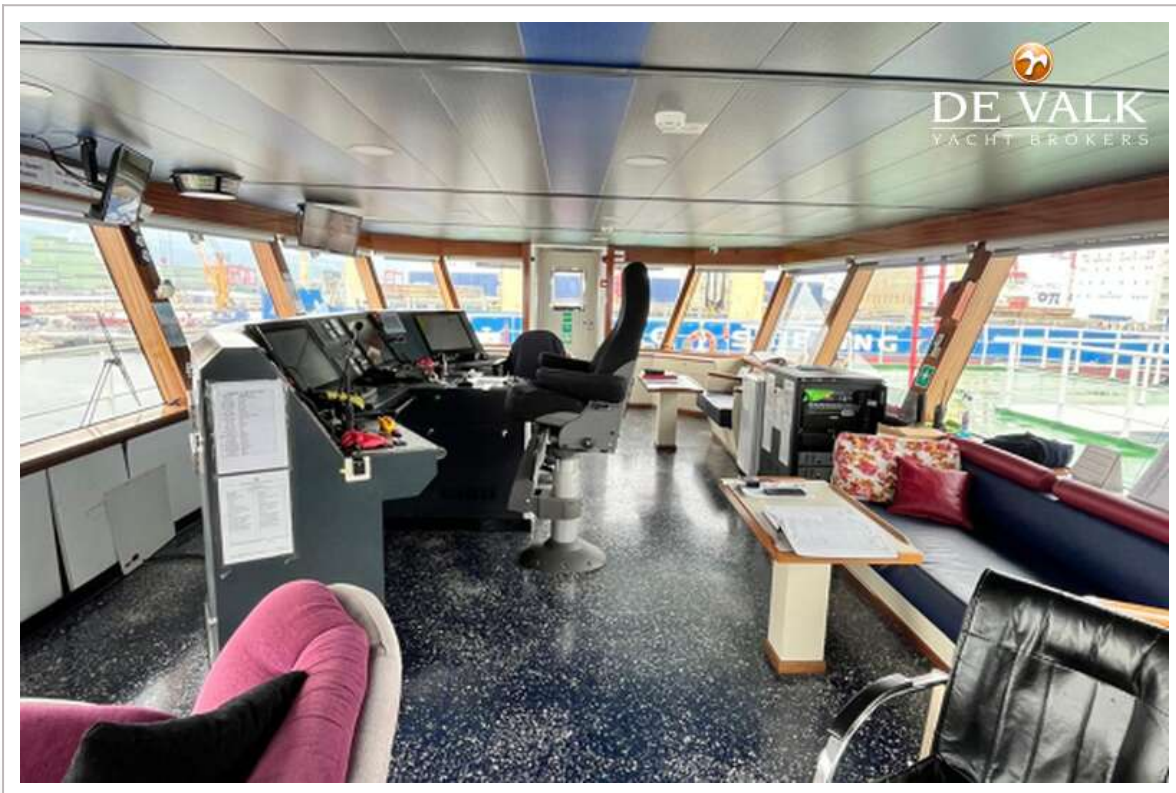
RO/RO PAX DOUBLE ENDED FERRY 90

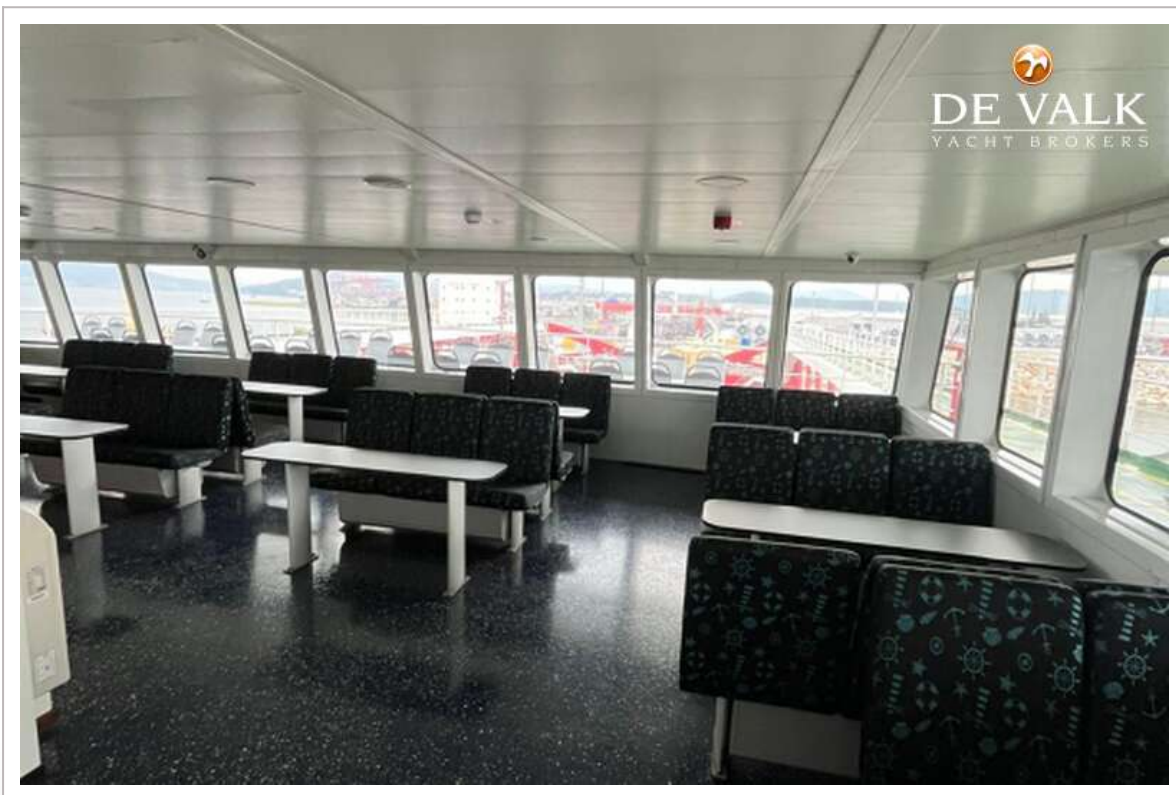


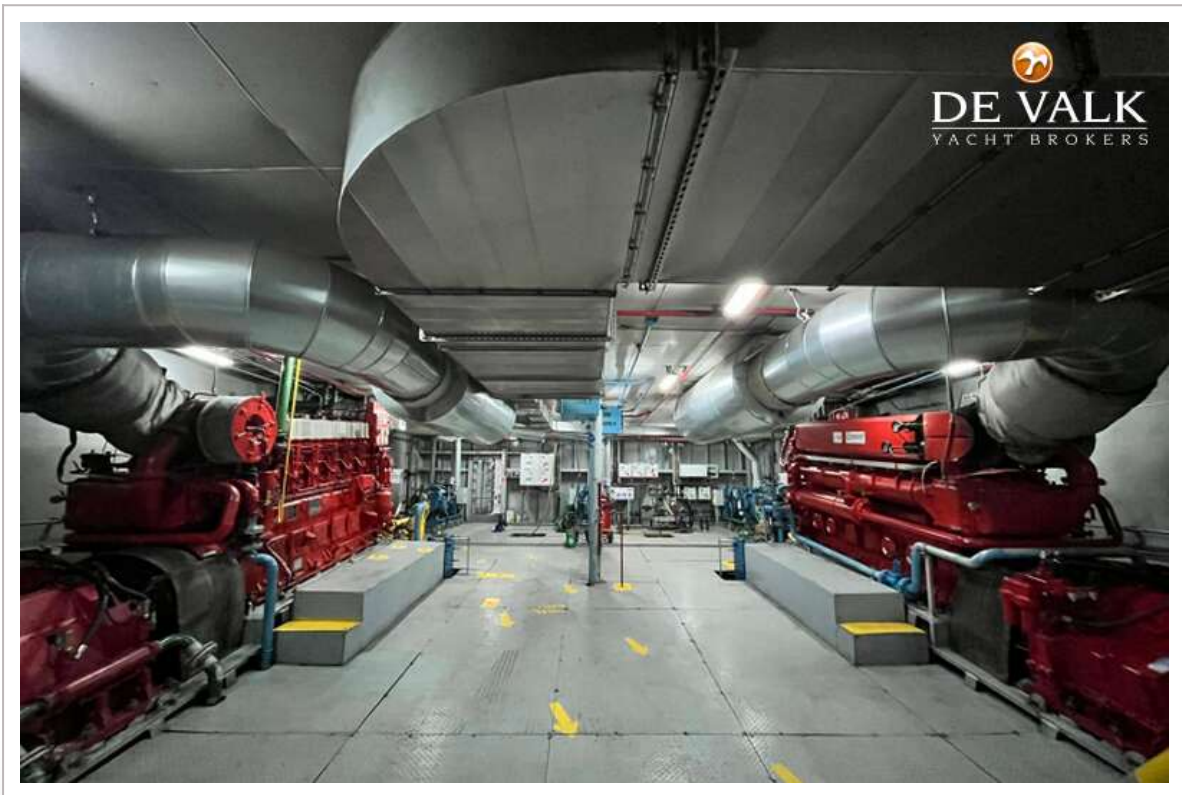
RO/RO PAX DOUBLE ENDED FERRY 90



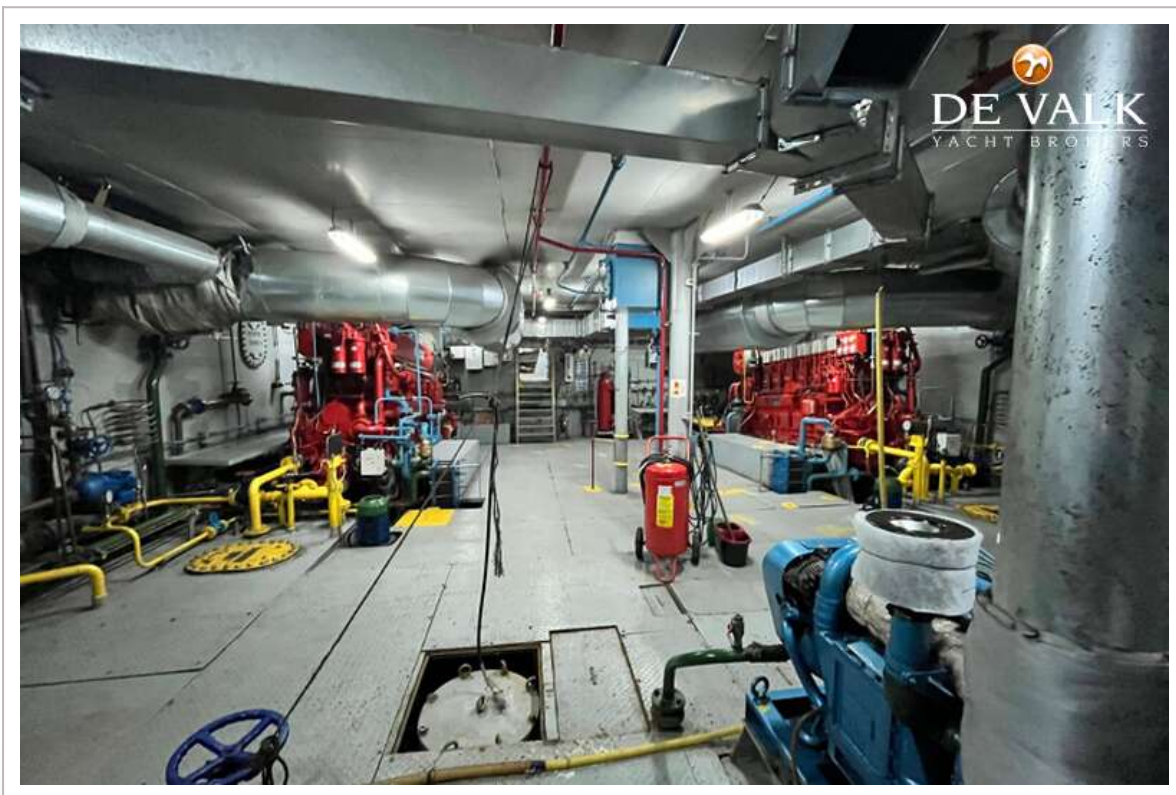
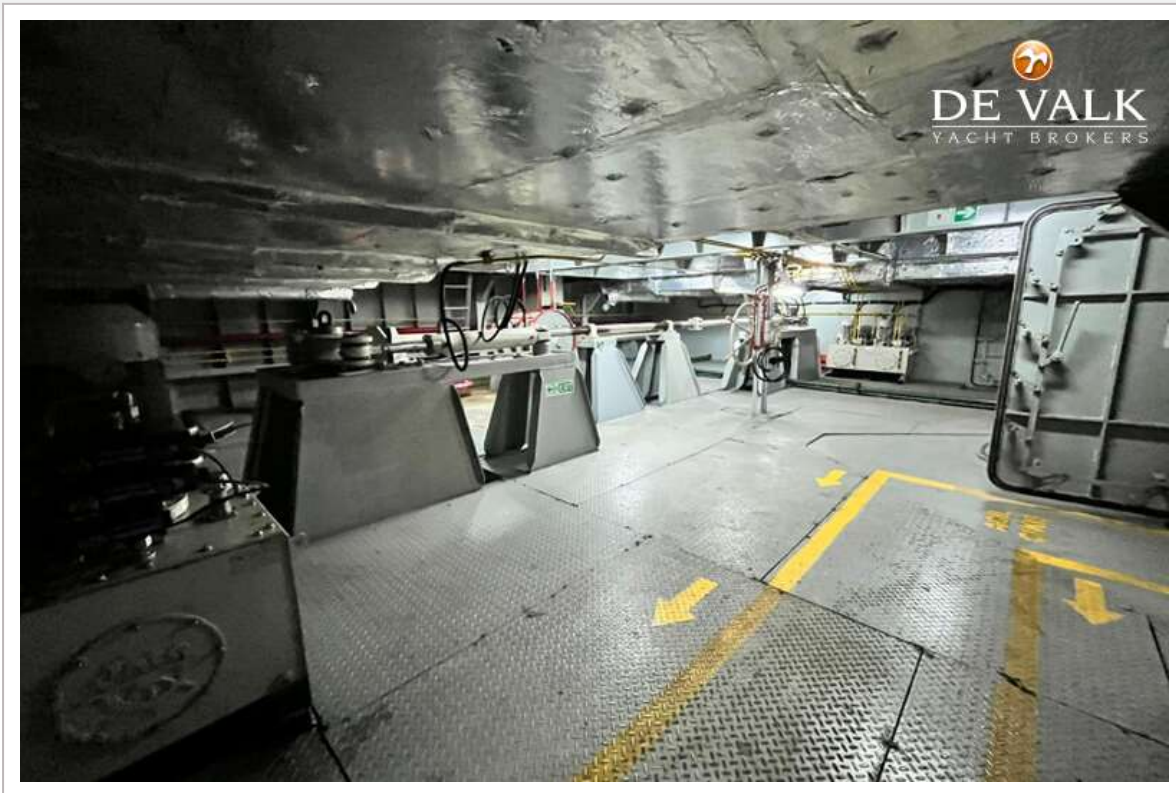
RO/RO PAX DOUBLE ENDED FERRY 90



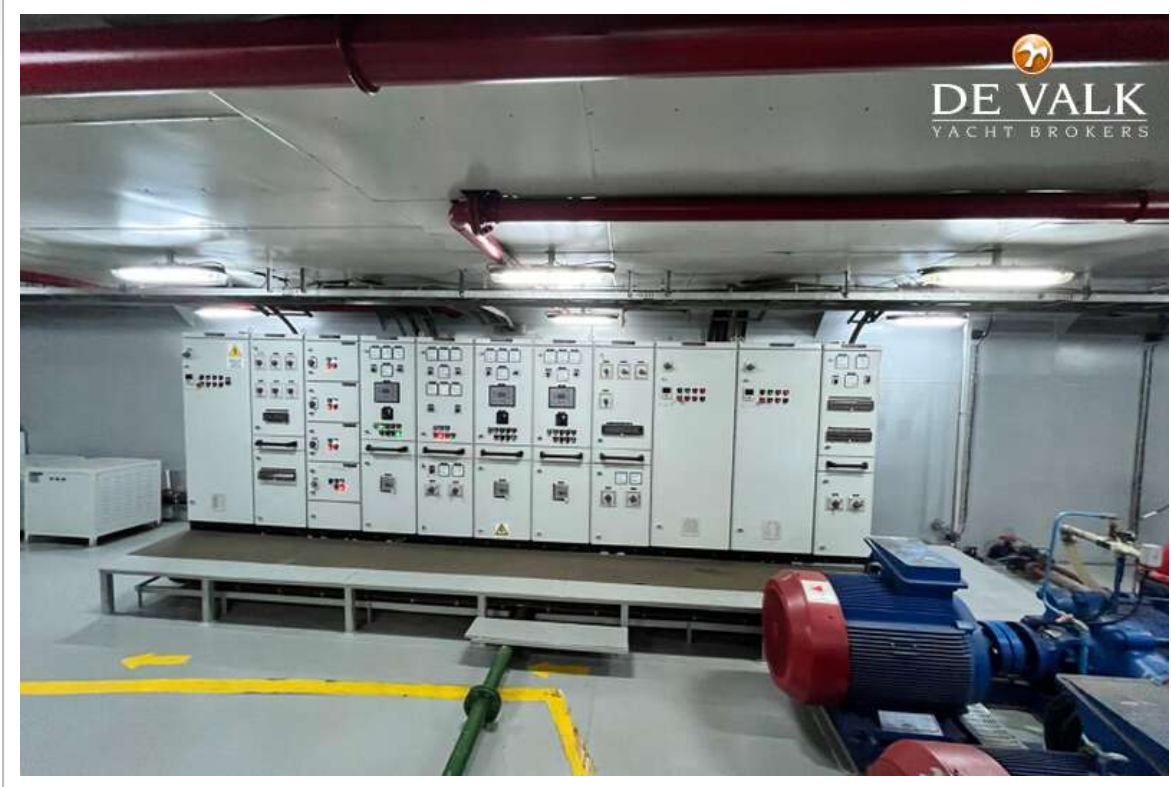




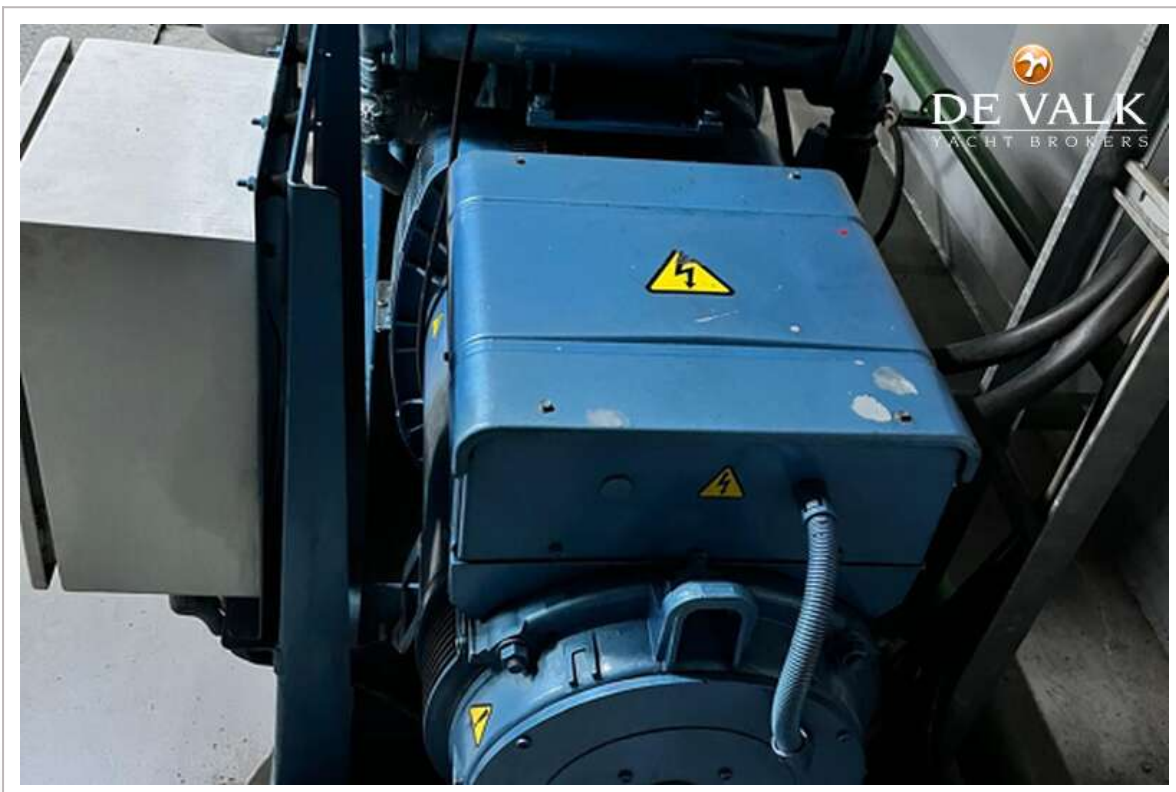
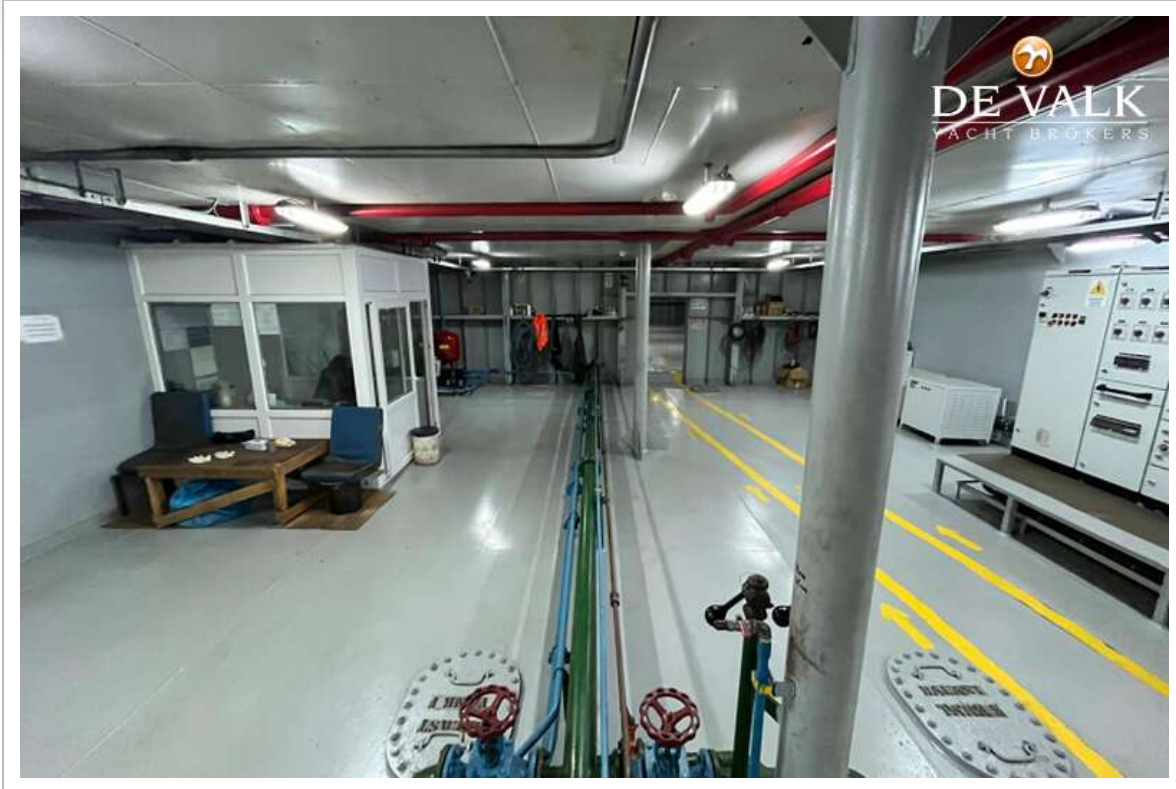
RO/RO PAX DOUBLE ENDED FERRY 90



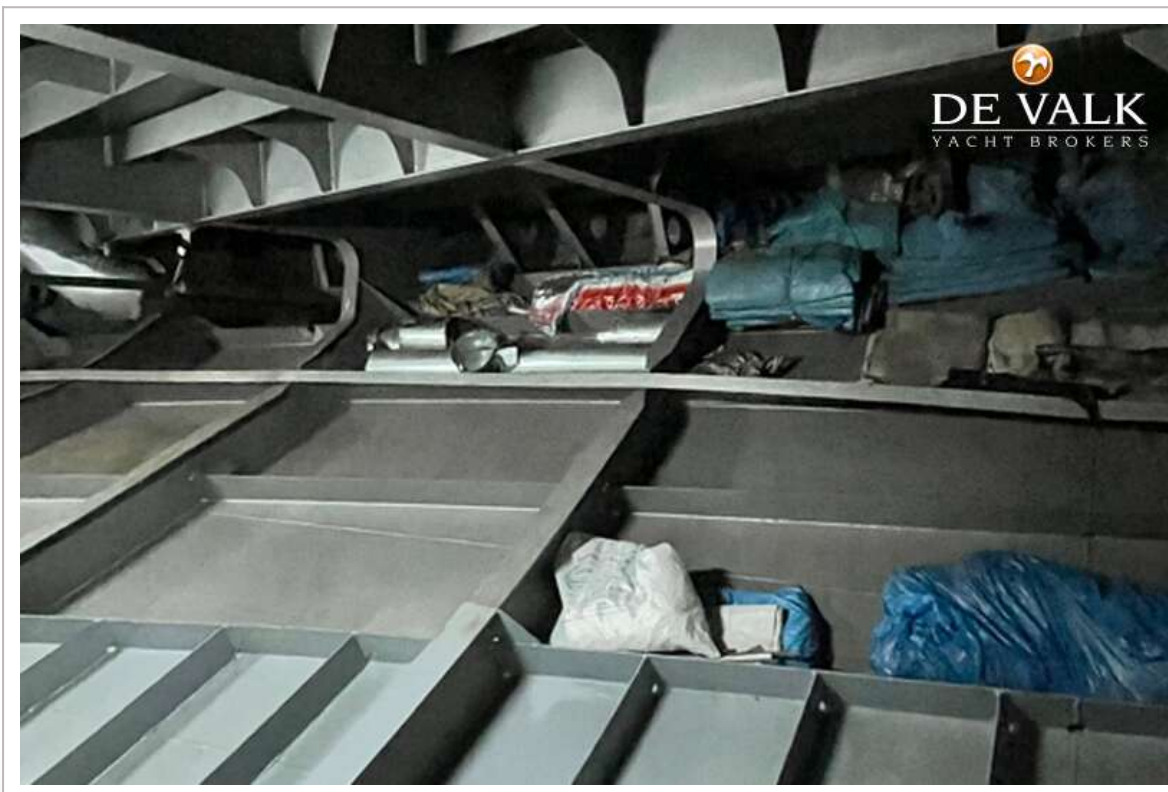
RO/RO PAX DOUBLE ENDED FERRY 90



RO/RO PAX DOUBLE ENDED FERRY 90

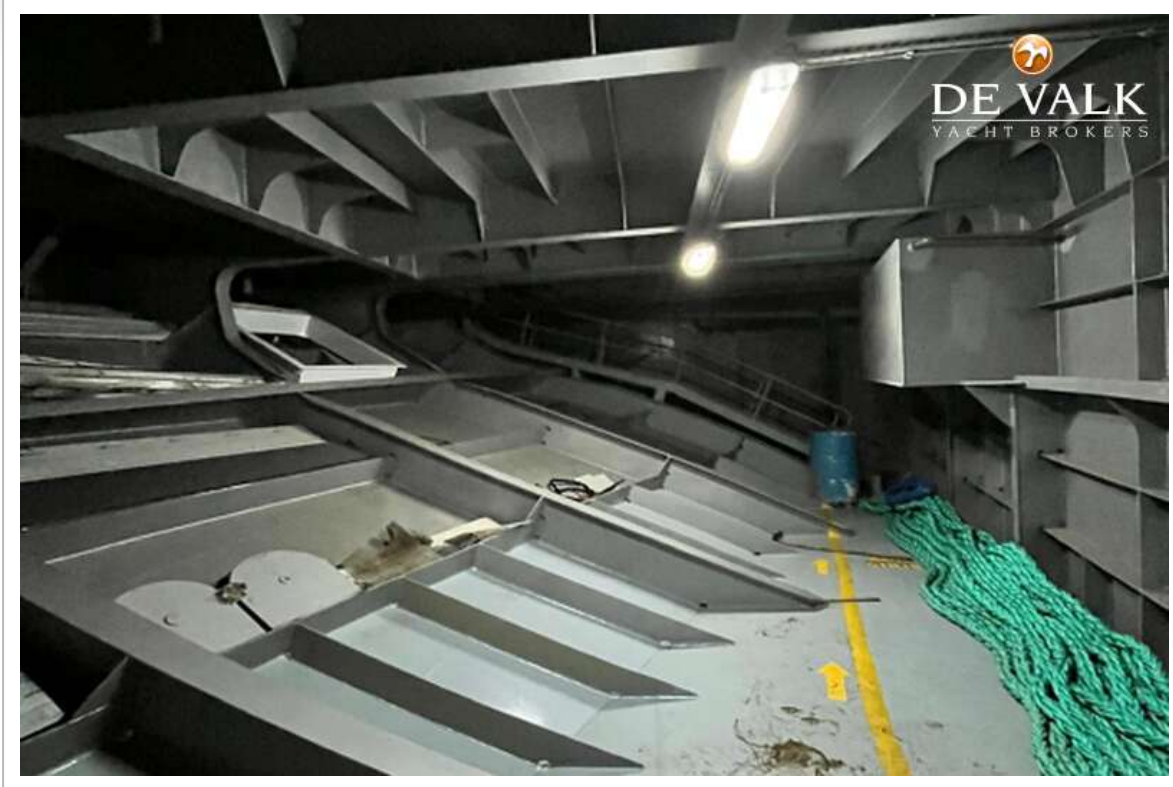


RO/RO PAX DOUBLE ENDED FERRY 90

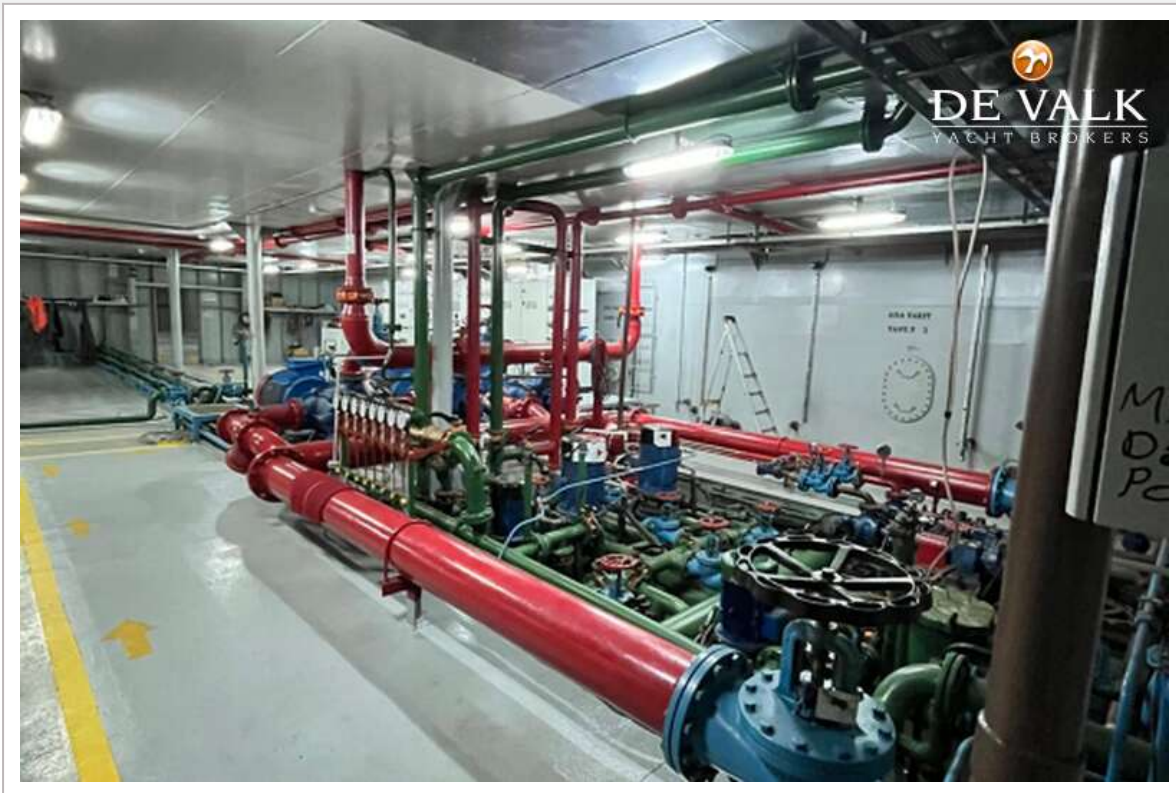


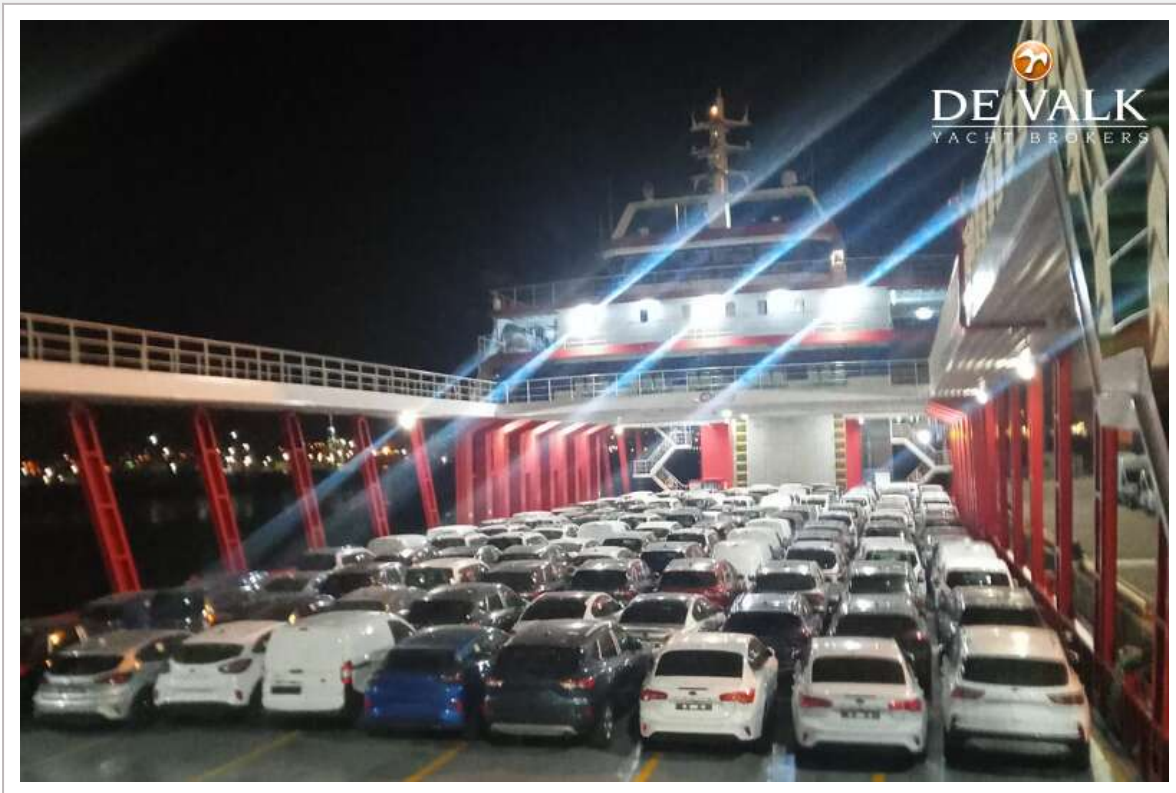


RO/RO PAX DOUBLE ENDED FERRY 90



RO/RO PAX DOUBLE ENDED FERRY 90





RO/RO PAX DOUBLE ENDED FERRY 90

