



DE VALK  
YACHT BROKERS



SPARKMAN & STEPHENS SAILMASTER 45 YAWL



DE VALK  
YACHT BROKERS

# SPARKMAN & STEPHENS SAILMASTER 45 YAWL

## BROKER'S COMMENTS

This by Sparkman & Stephens designed yawl is a return to the days when yachts carried pure, elegant lines and a fine entry, allowing them to slice effortlessly through the seas and hold a steady course. An absolute pleasure under sail, even when handled by just one or two crew. The vessel is comfortable and secure, both at sea and at anchor.

*Jan-Ward van Dantzig*

## SPECIFICATIONS

<b>Dimensions</b>	13.76 x 3.35 x 1.96 (m)	<b>Builder</b>	Werf Gusto z/h Firma Smulders - Schiedam
<b>Built</b>	1967	<b>Cabins</b>	2
<b>Material</b>	GRP	<b>Berths</b>	6
<b>Engine(s)</b>	1 x Yanmar 4JH4E diesel	<b>Hp/Kw</b>	50.00 (hp), 36.80 (kw)
<b>Asking price</b>	Under Offer (VAT )	<b>Lying</b>	The Netherlands

## CONTACT

<b>Sales office</b>	De Valk Thuishaven	<b>Telephone</b>	+31 35 5829042
<b>Address</b>	Marinaweg 8 (postal address) 1361 AC Almere NL	<b>E-mail</b>	thuishaven@devalk.nl

## DISCLAIMER

These particulars are given in good faith as supplied but cannot be guaranteed.



# SPARKMAN & STEPHENS SAILMASTER 45 YAWL

## GENERAL

<b>Model</b>	SPARKMAN & STEPHENS SAILMASTER 45 YAWL
<b>Type</b>	sailing yacht
<b>LOA (m)</b>	13,76
<b>LWL (m)</b>	9,35
<b>Beam (m)</b>	3,35
<b>Draft (m)</b>	1,96
<b>Air draft (m)</b>	17,50
<b>Headroom (m)</b>	1,90
<b>Year built</b>	1967
<b>Builder</b>	Werf Gusto z/h Firma Smulders - Schiedam
<b>Country</b>	The Netherlands
<b>Designer</b>	Sparkman & Stephens
<b>Displacement (t)</b>	12,7
<b>Ballast (tonnes)</b>	lead in GRP 4,3
<b>Hull material</b>	GRP
<b>Hull colour</b>	white
<b>Hull shape</b>	S-bilged
<b>Keel type</b>	long keel
<b>Superstructure material</b>	GRP
<b>Deck material</b>	GRP
<b>Deck finish</b>	teak
<b>Superstructure deck finish</b>	non-skid paint (2008)
<b>Cockpit deck finish</b>	non-skid paint (2008)
<b>Antifouling (year)</b>	2026
<b>Dorades</b>	Aluminium - white coated : 5 x (1x large)
<b>Window frame</b>	stainless steel
<b>Window material</b>	tempered glass
<b>Deckhatch</b>	2 x Lewmar with a green cover
<b>Portholes</b>	copper chromed
<b>Insulation</b>	Balsa



# SPARKMAN & STEPHENS SAILMASTER 45 YAWL

<b>Fuel tank (litre)</b>	GRP 200
<b>Level indicator (fuel tank)</b>	Dipstick
<b>Freshwater tank (litre)</b>	stainless steel 2 x 200 = Total 400
<b>Blackwater tank (litre)</b>	polyethylene 40 (2008)
<b>Blackwater tank extraction</b>	deck extraction + uw line 3 way valve / 3 weg kraan / 3-Wege-Ventil
<b>Wheel steering</b>	Stainless steel with teak / rvs met teak / Edelstahl mit Teak
<b>Outside helm position</b>	cable steering
<b>Emergency tiller</b>	yes
<b>More info on hull</b>	Blakes Seacocks (2007)
<b>More info on paintwork</b>	White painted hull
<b>Extra info</b>	Sand colored pedestal cover.

## ACCOMMODATION

<b>Cabins</b>	2
<b>Berths</b>	6
<b>Interior</b>	mahogany & Oregon ceiling / plafond / Decke
<b>Floor</b>	teak and holly
<b>Saloon</b>	yes
<b>Headroom saloon (m)</b>	1,90
<b>Heating</b>	diesel ducted hot air Sigmar
<b>Chart table</b>	yes
<b>Aft Cabin</b>	yes
<b>Dinette</b>	Salon benches : 1.90 x 0.60 m
<b>Galley</b>	On Port Side - Headroom : 1.87 m
<b>Countertop</b>	Duropal
<b>Sink</b>	stainless steel 2 x
<b>Cooker</b>	calor gas Force Ten (2 burner / pitten / Flammen)
<b>Oven</b>	Force Ten
<b>Gas alarm</b>	2 x (2021)
<b>Fridge</b>	Adler / Barbour compressor coolunit (210 liter)



# SPARKMAN & STEPHENS SAILMASTER 45 YAWL

Hot water system	220V + engine 22 L boiler
Water pressure system	electrical Shurflow Diaphragm (2023)
Manual and/or foot pump	Saltwater foot pump
Owners cabin	v-bed
Bed length (m)	1.95 x 1.60 m - Headroom : 2.00 m
Wardrobe	hanging/drawers/shelves
Bathroom	shared
Toilet	shared
Toilet system	manual Skipper Marine
Wash basin	in the bathroom
Extra info	Headroom bathroom : 1.90 m
Guest cabin 1	double bed + single bed
Bed length (m)	2.10 x 1.10 m & 1.95 x 0.80 m - Headroom : 1.85 m
Wardrobe	hanging/drawers/shelves
Extra info	The Sigmar heating tank is supplied by the return from the engine injectors.

## MACHINERY

No of engines	1
Make	Yanmar
Type	4JH4E
HP	50
kW	36.80
Fuel	diesel
Year installed	2006
Maximum speed (kn)	7
Cruising speed (kn)	6
Consumption (l/hr)	2
Engine cooling system	freshwater heat exchanger (2023)
Drive	shaft
Shaft seal	yes



# SPARKMAN & STEPHENS SAILMASTER 45 YAWL

<b>Engine controls</b>	bowden cable Kobelt
<b>Gearbox</b>	hydraulic Tuff Torq by Kanzaki KM35P (ratio 2.36 : 1)
<b>Exhaust</b>	watercooled
<b>Thrust bearing</b>	PolyFlex
<b>Propeller type</b>	folding Variprop DF 107 (2007)
<b>Propeller blades</b>	3
<b>Propeller shaft material</b>	stainless steel
<b>Shaft lubrication</b>	grease
<b>Manual bilge pump</b>	yes
<b>Electric bilge pump</b>	Rule (2021)
<b>Bilge alarm</b>	yes
<b>Electrical installation</b>	12 & 220 Volt
<b>Batteries</b>	4 x 6 Volt / 220 Ah AGM Lifeline (2 battery banks - 11-2021)
<b>Battery monitor</b>	Electro System
<b>Battery charger</b>	Mastervolt Charge Master 12/50-3 (2021)
<b>Inverter</b>	Victron Phoenix 12V/2000 W
<b>Solar panel</b>	1 x & Victron BlueSolar Charge Controller MPPT 75 15 (2023)
<b>Diode battery combiners</b>	yes
<b>Shorepower</b>	with cable
<b>Insulation transformer</b>	Guest 30 A Galvanic Isolator (2007)
<b>Extra info</b>	Duo USB C/A socket in cockpit (2026)
<b>Extra info</b>	Racor 500FG Dieselfilter with water separator.
<b>Extra info</b>	2 blade fixed spare propeller.

## NAVIGATION

<b>Compass</b>	Constalation Danforth
<b>Electric compass</b>	Raymarine ST60+ Compass
<b>Depth sounder</b>	Raymarine ST60+ Depht
<b>Log</b>	Raymarine ST60+ Speed
<b>Windset</b>	Raymarine ST60+ Wind
<b>Repeater</b>	2 x Raymarine ST60+ Graphic (in cockpit & aft cabin)



# SPARKMAN & STEPHENS SAILMASTER 45 YAWL

<b>VHF</b>	Icom IC-M423 with extra handset in cockpit.
<b>Autopilot</b>	Alpha 3000
<b>Plotter</b>	Raymarine E80
<b>AIS transceiver</b>	Raymarine AIS 700 Class B (2023)
<b>Navigation lights</b>	yes

## EQUIPMENT

<b>Sprayhood</b>	1 x Over the entrance (old)
<b>Sprayhood with grab rail</b>	For the cockpit (2023)
<b>Winter cover</b>	Green - over complete yacht.
<b>Cockpit cushions</b>	White / sand-colored striped
<b>Cockpit table</b>	yes
<b>Boarding ladder</b>	wood (Removable / wegneembaar / Abnehmbar)
<b>Deck shower</b>	(hot and cold)
<b>Anchor</b>	CQR Plough 45 lb
<b>Anchor chain</b>	60 m
<b>Windlass</b>	electrical Simson-Laurence Anchorman 1200
<b>Capstan</b>	yes
<b>Outboard support</b>	Teak
<b>Sea railing</b>	wire Double / dubbel / doppelt (2025)
<b>Grab rail (superstructure)</b>	teak
<b>Railing side opening gates</b>	yes
<b>Pushpit</b>	Stainless steel
<b>Pulpit</b>	Stainless steel
<b>Life raft</b>	container Hero (2022)
<b>Life raft (pers)</b>	4
<b>Last life raft survey</b>	Must be inspected
<b>Lifebuoy</b>	LifeSling
<b>Radar reflector</b>	At the top of the Yawl mast
<b>Fenders</b>	yes
<b>Mooring lines</b>	yes



# SPARKMAN & STEPHENS SAILMASTER 45 YAWL

Spare parts	yes
Tools	yes
Radio-cd player	Super Sonic
Speakers in salon	2 x Boss Maritime
Clock - barometer	Seth Thomas Clocks
Fire extinguisher	3 x
Latest extinguisher survey	2022
Extra info	yes
Extra info	Classic bronze Herreshoff-style cleats and fairleads.
Extra info	2 x Stainless steel gas bottle.

## RIGGING

Rigging	yawl
Standing rigging	wire
Brand mast	Alloy (main mast / hoofd mast / Hauptmast)
Material mast	aluminium coated 2x Mast painted white / wit geschilderd / weiß gestrichen - 2023
Spreaders	1 + 1
Keel stepped mast	Main mast
Mainsail	2 x UK Sails (2008 - 1 x with 2 reef points and 1 x with 3 reef points).
Mainsail cover	1 x Green mainsail cover with Lazy Jacks & 1x brown mainsail cover.
Battcars	yes
Fully battened mainsail	yes
Mizzen	1 x UK Sails (2008) - Fully battened and Battcars.
Mizzen sailcover	2 x (green and brown)
Genoa I	Furling Genoa 140% (older sail)
Genoa II	Elvstrom Sails : 120% Furling Genoa (2024)
Genoa furler	Harken MK III
Gennaker	Furling Gennaker with a Bamar Rollgen furler.
Staysail	with hanks



# SPARKMAN & STEPHENS SAILMASTER 45 YAWL

<b>Removable innerforestay</b>	yes
<b>Reefing System</b>	slabreefing
<b>Backstay adjuster</b>	mechanical
<b>Boomvang</b>	tackle
<b>Primary sheet winch</b>	2 x Lewmar 30 ST (Stainless steel)
<b>Secondary sheet winch</b>	1 x Lewmar 40 ST (Stainless steel)
<b>Genoa sheetwinches</b>	2 x Lewmar 50 ST (Stainless steel)
<b>Halyard winches</b>	1 x Lewmar 40 ST, 1 x Barient 22, 2 x Barient 20, 1 x Barient 10 (all Stainless steel on Main mast) & 2 x Lewmar 16 ST (both Stainless steel on Yawl mast)
<b>Reefing winch</b>	1 x Lewmar 16 ST (mainsail)
<b>Spi-pole</b>	aluminium 1 x
<b>Gennaker pole</b>	aluminium 1 x Selden - removable / wegneembaar / Abnehmbar (2021)
<b>Isolated backstay</b>	yes
<b>Extra info</b>	1 x Fisherman's staysail
<b>Extra info</b>	Total sail area: approx. 88 m2



# SPARKMAN & STEPHENS SAILMASTER 45 YAWL



# SPARKMAN & STEPHENS SAILMASTER 45 YAWL



# SPARKMAN & STEPHENS SAILMASTER 45 YAWL



# SPARKMAN & STEPHENS SAILMASTER 45 YAWL



# SPARKMAN & STEPHENS SAILMASTER 45 YAWL



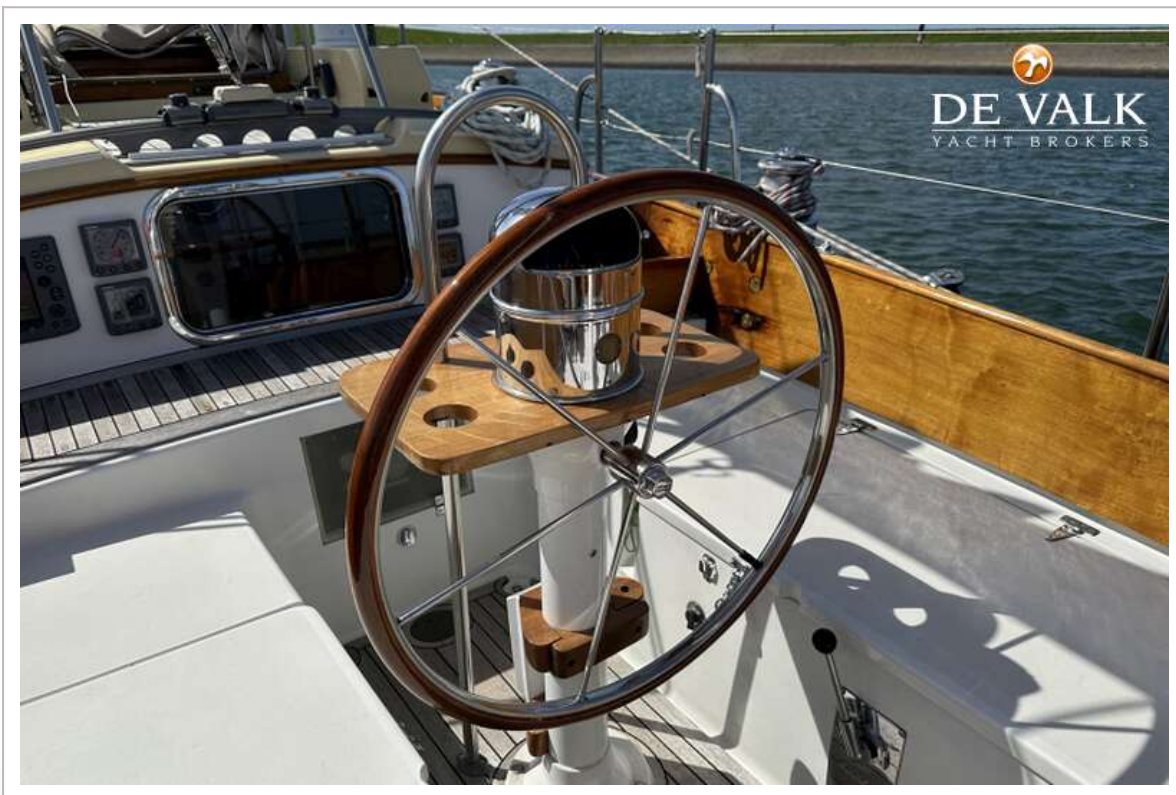
# SPARKMAN & STEPHENS SAILMASTER 45 YAWL



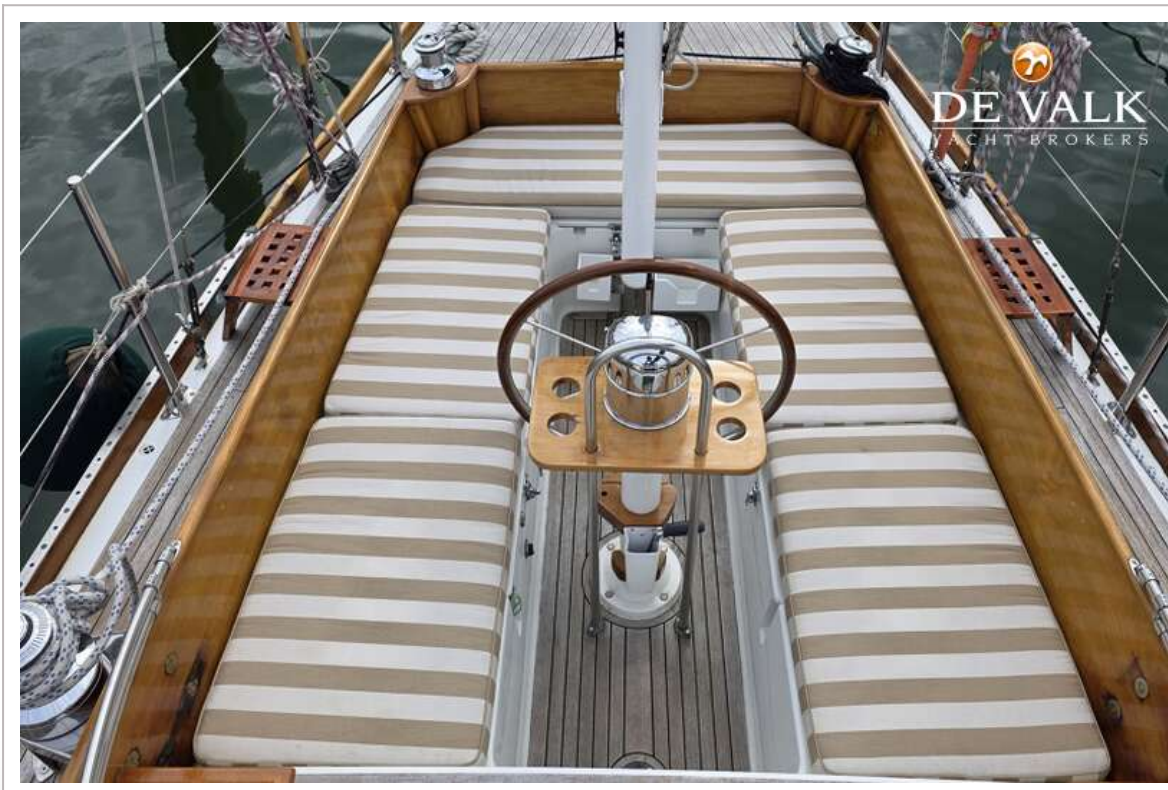
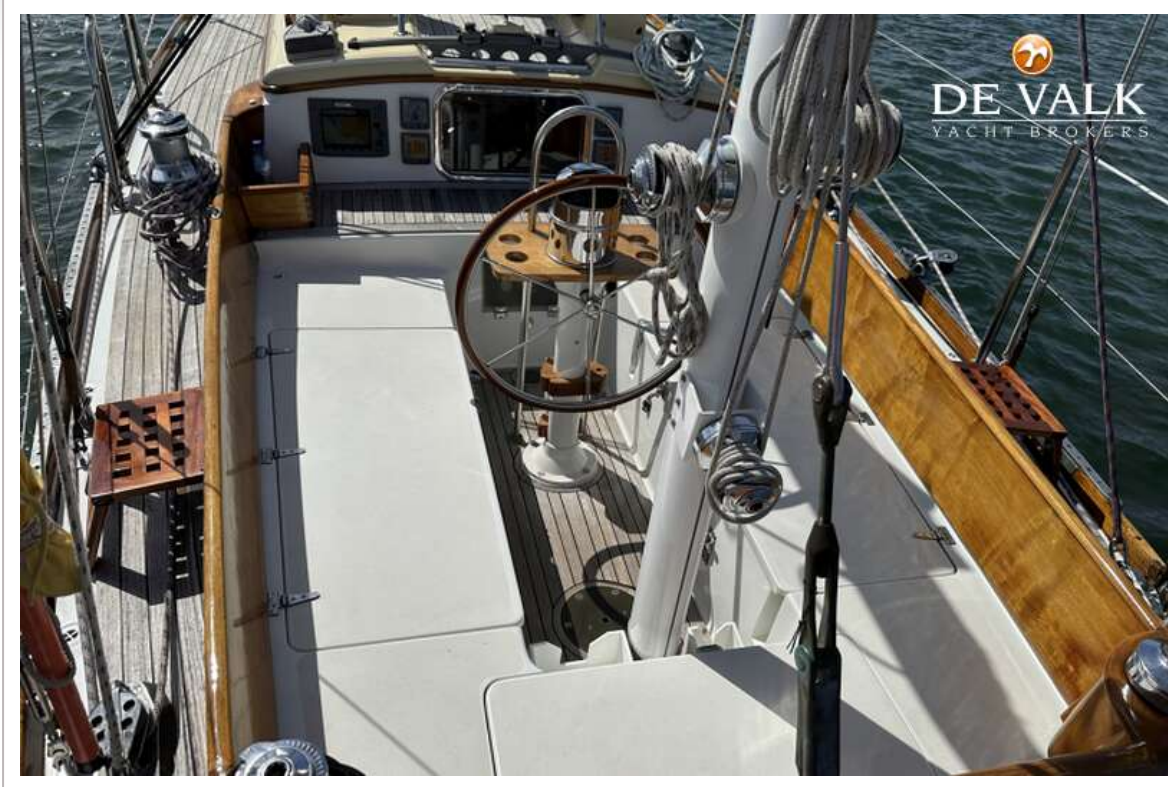
# SPARKMAN & STEPHENS SAILMASTER 45 YAWL



# SPARKMAN & STEPHENS SAILMASTER 45 YAWL



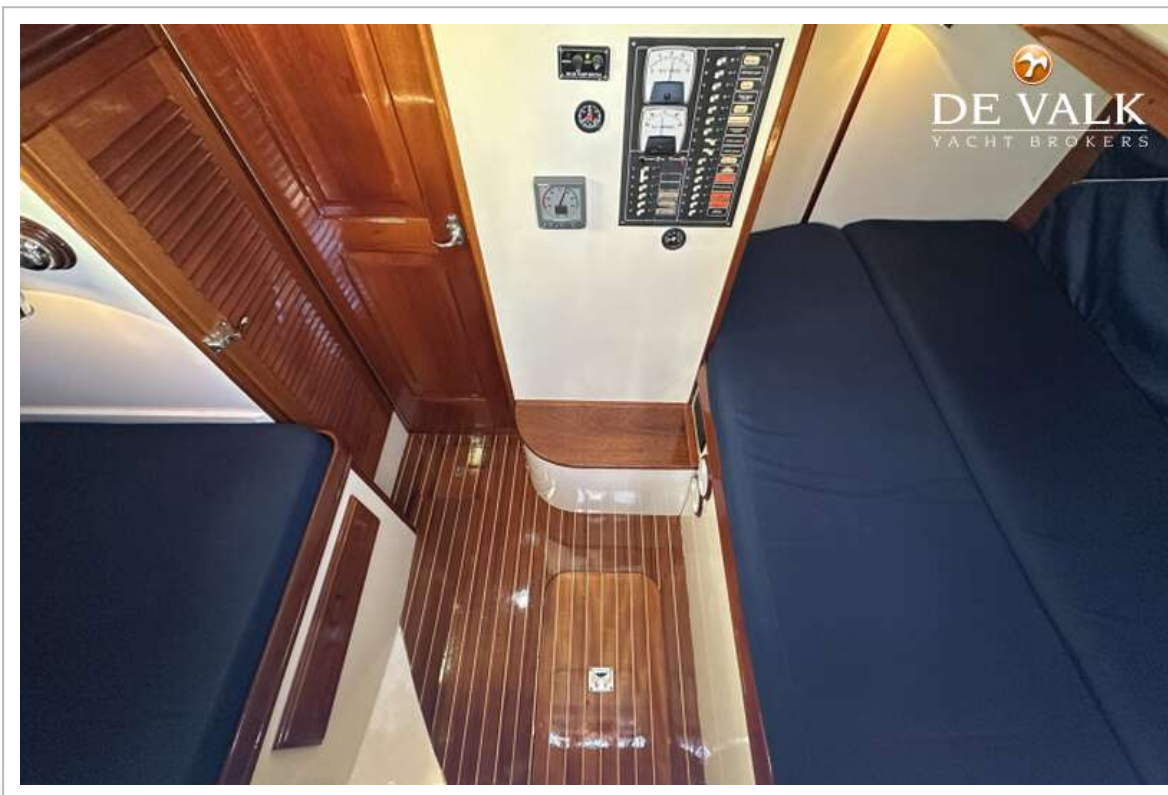
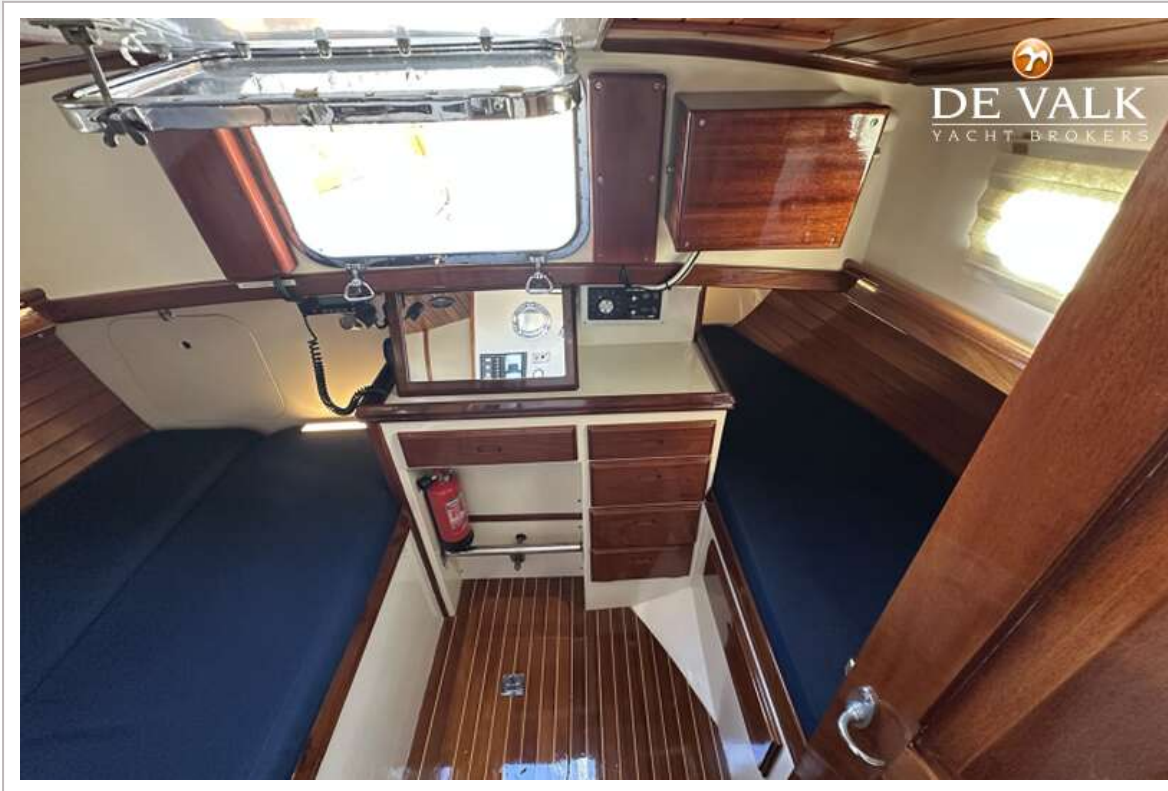
# SPARKMAN & STEPHENS SAILMASTER 45 YAWL



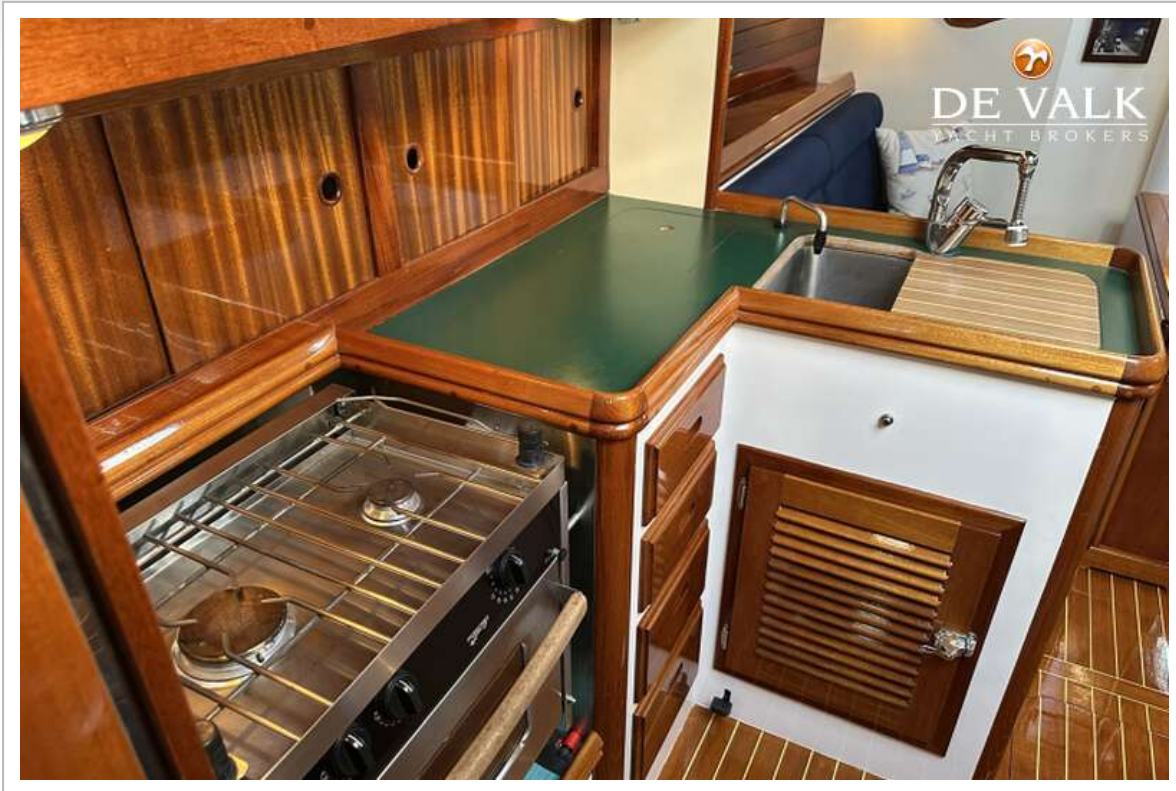
# SPARKMAN & STEPHENS SAILMASTER 45 YAWL



# SPARKMAN & STEPHENS SAILMASTER 45 YAWL



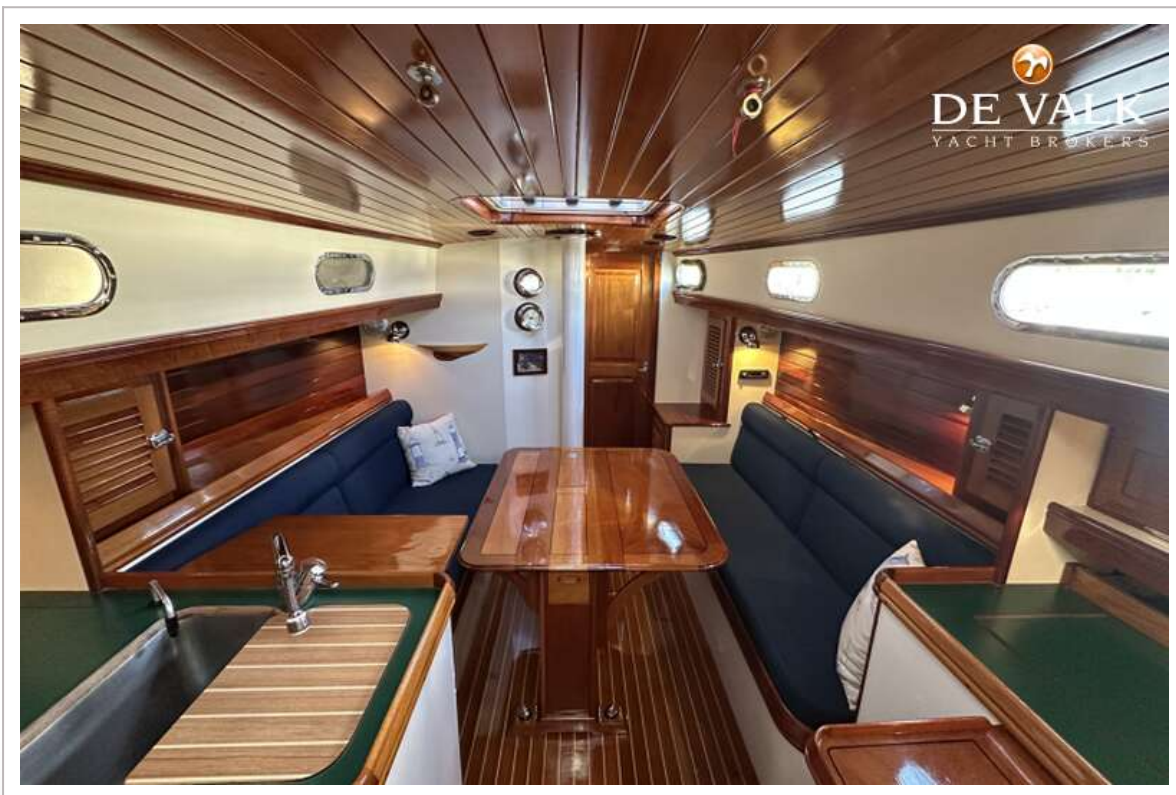
# SPARKMAN & STEPHENS SAILMASTER 45 YAWL



# SPARKMAN & STEPHENS SAILMASTER 45 YAWL



# SPARKMAN & STEPHENS SAILMASTER 45 YAWL



# SPARKMAN & STEPHENS SAILMASTER 45 YAWL



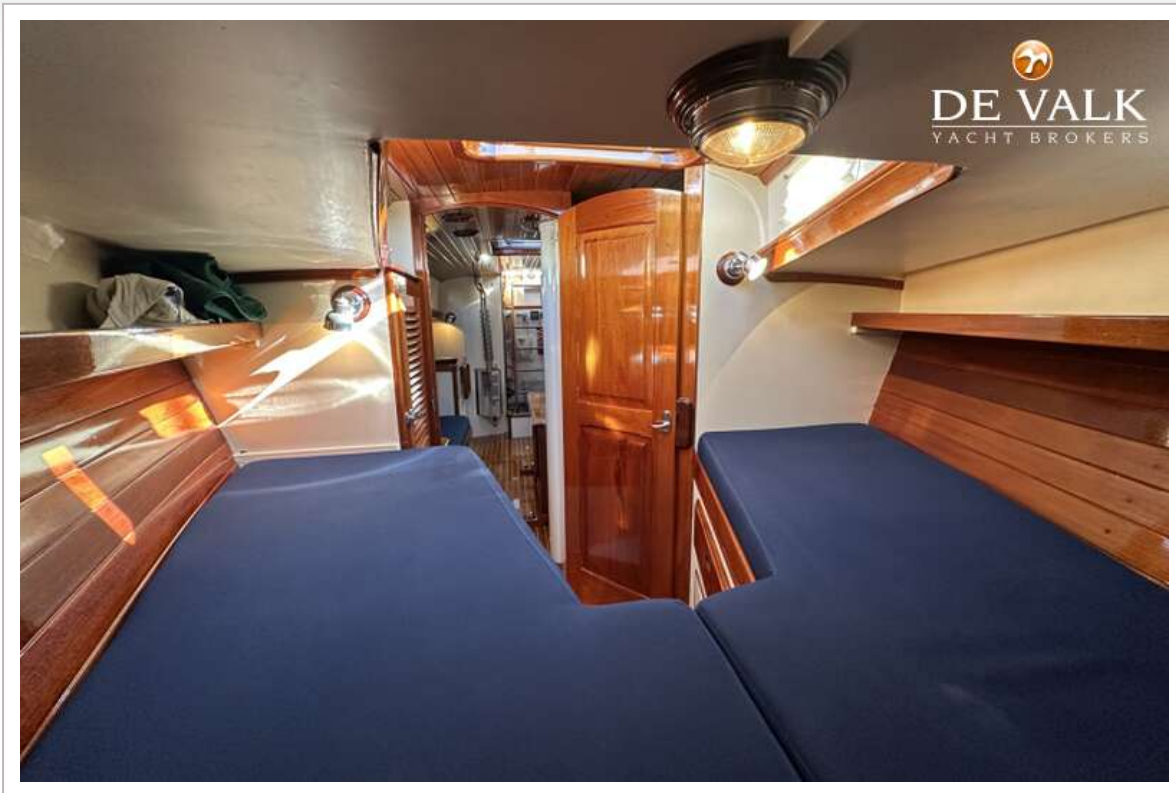
# SPARKMAN & STEPHENS SAILMASTER 45 YAWL



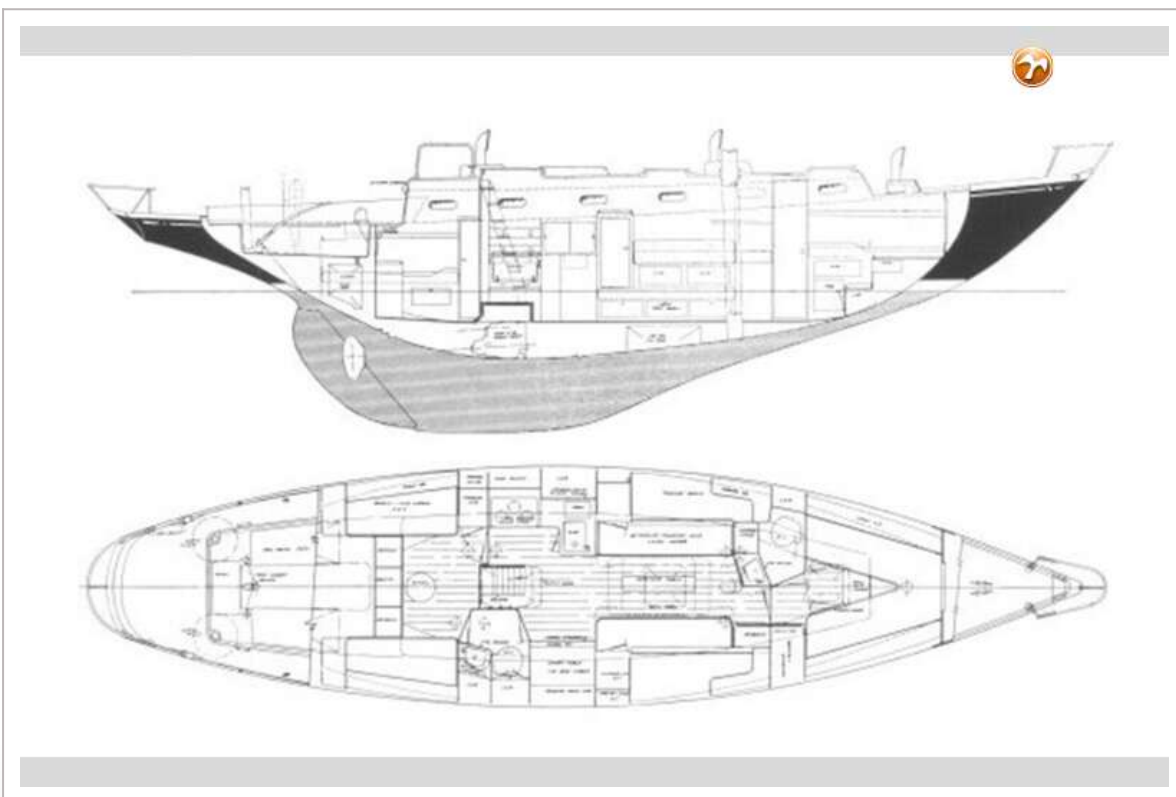
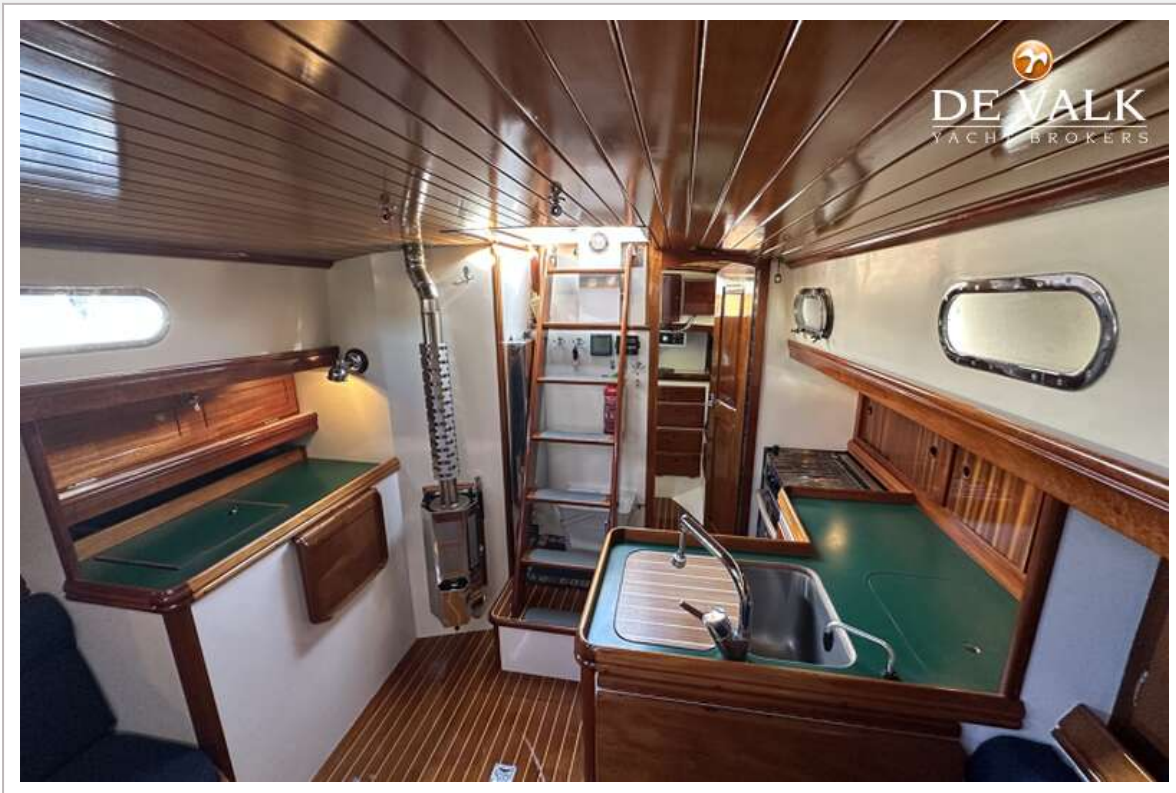
# SPARKMAN & STEPHENS SAILMASTER 45 YAWL



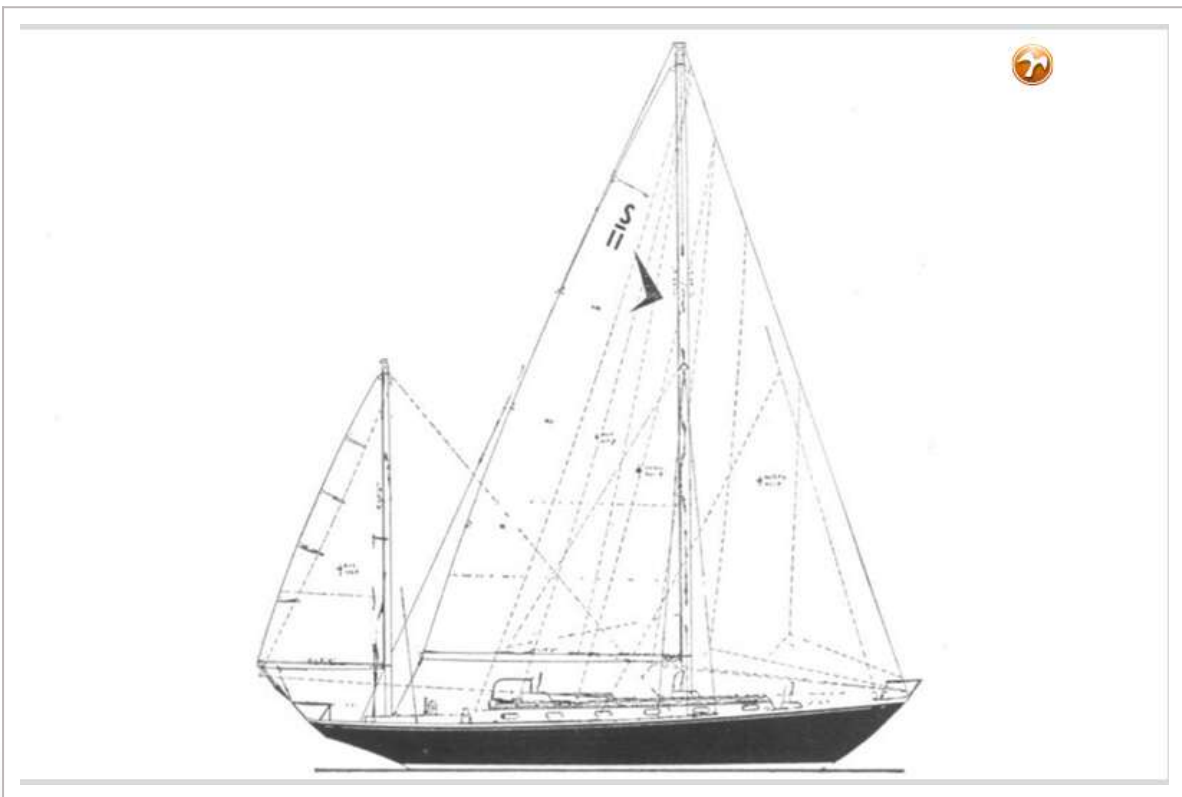
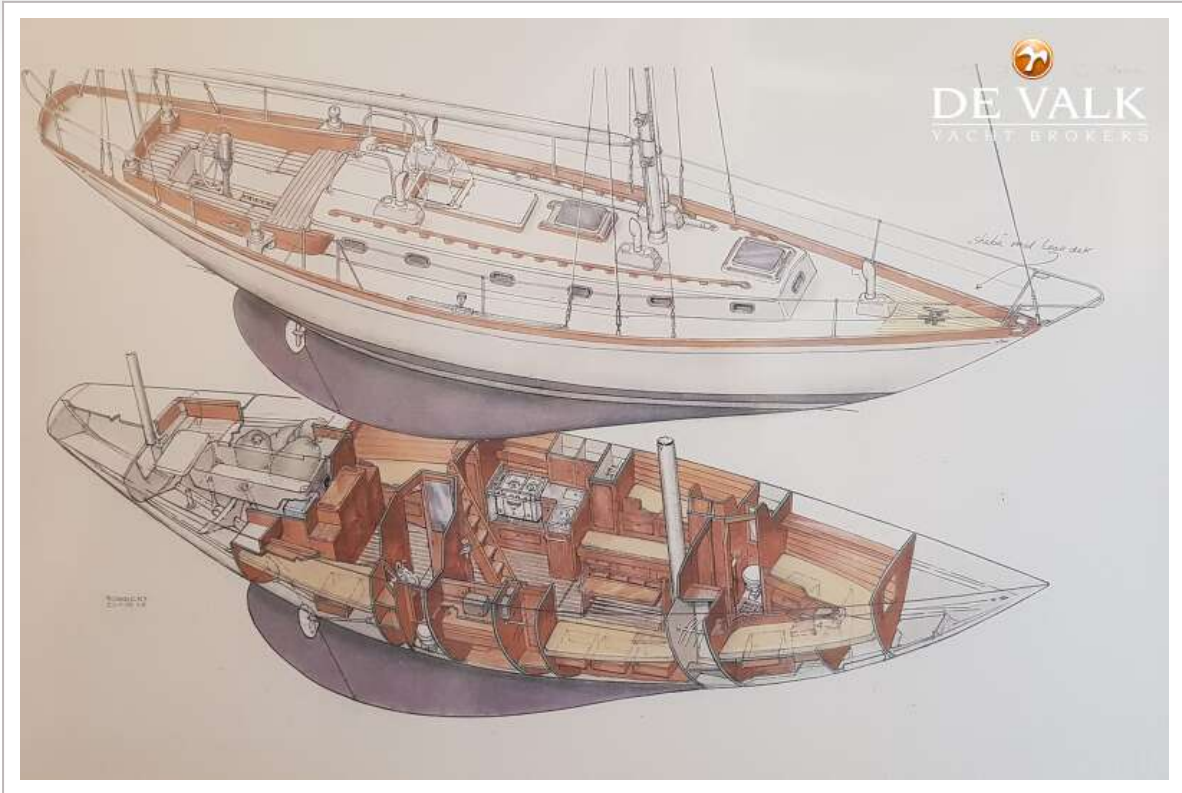
# SPARKMAN & STEPHENS SAILMASTER 45 YAWL



# SPARKMAN & STEPHENS SAILMASTER 45 YAWL



# SPARKMAN & STEPHENS SAILMASTER 45 YAWL



# SPARKMAN & STEPHENS SAILMASTER 45 YAWL



# SPARKMAN & STEPHENS SAILMASTER 45 YAWL

