




DE VALK
YACHT BROKERS

ELAN IMPRESSION 40



DE VALK
YACHT BROKERS

ELAN IMPRESSION 40

BROKER'S COMMENTS

The Elan Impression 40 is considered one of the most popular cruising yachts for sailors who value a blend of high living comfort and solid sailing performance. Large panoramic windows and hatches flood the saloon with natural light. The headroom in the saloon is approximately 2 meters, which is comfortable even for tall sailors. Special features include a clever folding navigation table that extends the seating area in the saloon when not in use. The L-shaped galley provides secure footing while cooking at sea.

Jörg Hellmich

SPECIFICATIONS

Dimensions	11.48 x 3.91 x 2.30 (m)	Builder	Elan Yachts
Built	2018	Cabins	3
Material	GRP	Berths	8
Engine(s)	1 x Volvo Penta D1-30F diesel	Hp/Kw	29.00 (hp), 21.34 (kw)
Asking price	€ 135.000 (VAT Not paid)	Lying	at sales office

CONTACT

Sales office	De Valk Almeria	Telephone	+34 950 497 825
Address	Puerto Deportivo, Darsena de la Batea 42 04711 Almerimar ES	E-mail	almeria@devalk.nl

DISCLAIMER

These particulars are given in good faith as supplied but cannot be guaranteed.



ELAN IMPRESSION 40

GENERAL

Model	ELAN IMPRESSION 40
Type	sailing yacht
LOA (m)	11,48
LWL (m)	10,00
Beam (m)	3,91
Draft (m)	2,30
Air draft (m)	17,60
Headroom (m)	1,98
Year built	2018
Builder	Elan Yachts
Country	Slovenia
Designer	Humphreys Yacht Design
Displacement (t)	8,37
Ballast (tonnes)	2,54
CE norm	B
Hull material	GRP
Hull colour	white
Hull shape	round-bilged
Keel type	fin keel with bulb
Superstructure material	GRP
Deck material	GRP
Deck finish	non-skid moulded in
Superstructure deck finish	non-skid moulded in
Cockpit deck finish	teak
Antifouling (year)	05.2025
Window frame	aluminium
Window material	perspex
Deckhatch	Lewmar
Portholes	aluminium
Fuel tank (litre)	polyethylene 170



Level indicator (fuel tank)	Display
Freshwater tank (litre)	polyethylene 240 + add. tank
Level indicator (freshwater)	Display
Blackwater tank (litre)	polyethylene 110
Level indicator (blackwater)	Display
Blackwater tank extraction	deck extraction + uw line
Wheel steering	chain steering Twin helm
Emergency tiller	yes

ACCOMMODATION

Cabins	3
Berths	8
Layout	3 cabin version
Floor	wood
Open cockpit	yes
Deck saloon	yes
Headroom saloon (m)	1,98
Chart table	yes
Convertible berth	In saloon
Galley	L-shape
Countertop	corian
Sink	corian Double
Cooker	calor gas Eno - 2 burner
Oven	Eno
Fridge	2 x Isotherm)Front- & Toploader)
Freezer	Compartment in fridge
Hot water system	220V + engine Sigmar Marine Boiler
Water pressure system	electrical
Hot water tap	yes
Crockery	yes
Guest cabin 1	v-bed Forward



Bed length (m)	1,95
Wardrobe	hanging and shelves
Toilet	en suite
Toilet system	manual Jabsco
Wash basin	at the toilet
Shower	en suite
Guest cabin 2	double bed Aft Port
Bed length (m)	2,00
Wardrobe	hanging and shelves
Toilet	shared
Toilet system	manual Jabsco
Wash basin	at the toilet
Shower	shared
Guest cabin 3	double bed Aft STB
Bed length (m)	2,00
Wardrobe	hanging and shelves

MACHINERY

No of engines	1
Make	Volvo Penta
Type	D1-30F
HP	29
kW	21.34
Fuel	diesel
Year installed	2017
Maximum speed (kn)	7,6
Cruising speed (kn)	5
Consumption (l/hr)	3
Range (nm)	280
Engine hours	2608
Engine cooling system	freshwater heat exchanger



Drive	sail-drive
Saildrive seal	Volvo Penta 130S-C
Engine controls	bowden cable
Gearbox	mechanical
Bowthruster	electric Quick TCD 1022
Exhaust	watercooled
Propeller type	fixed
Propeller blades	2
Manual bilge pump	yes
Electric bilge pump	yes
Electrical installation	12V system
Start battery	1 x 12V / 80 Ah AGM (07.2025)
Service battery	2 x 12V / 95 Ah Lithium
Bowthruster battery	2 x Whisper Power 12V / 100 Ah Gel (2025)
Battery monitor	Display
Battery charger	Quick SBC500 NRG 12V / 40A
Inverter	Green Cell 12V / 2000W
Solar panel	2 x Victron BlueSolar 12V/30W
Shorepower	with cable 230V

NAVIGATION

Compass	Plastimo
Electric compass	B&G
Depth sounder/log	B&G Triton
Windset	B&G Triton
VHF	B&G V50
VHF handheld	yes
Autopilot	B&G AC42 + controle
Radar/GPS/plotter	B&G Zeus 7
Electronic chart(s)	Navionics
AIS transceiver	B&G V50 (with plotter)



Navigation lights yes

EQUIPMENT

Sprayhood	yes
Bimini	yes
Cockpit cushions	yes
Cockpit table	Teak
Bathing platform	Retractable
Boarding ladder	stainless steel
Gangway	Woodplank
Deck shower	yes
Anchor	Delta Lewmar 20kg
Anchor chain	40m (8mm) in SS
Windlass	electrical Quick TCD1022 with cockpit control
Dinghy	inflatable
Outboard	Hideo
Outboard support	yes
Sea railing	wire
Grab rail (superstructure)	stainless steel
Pushpit	yes
Pulpit	yes
Life raft	valise (or bag) Arimar
Life raft (pers)	8
Last life raft survey	07.2019
Lifejackets	yes
Safety harness	yes
Lifebuoy	yes
Binocular	yes
Radar reflector	yes
Fenders	yes
Mooring lines	yes



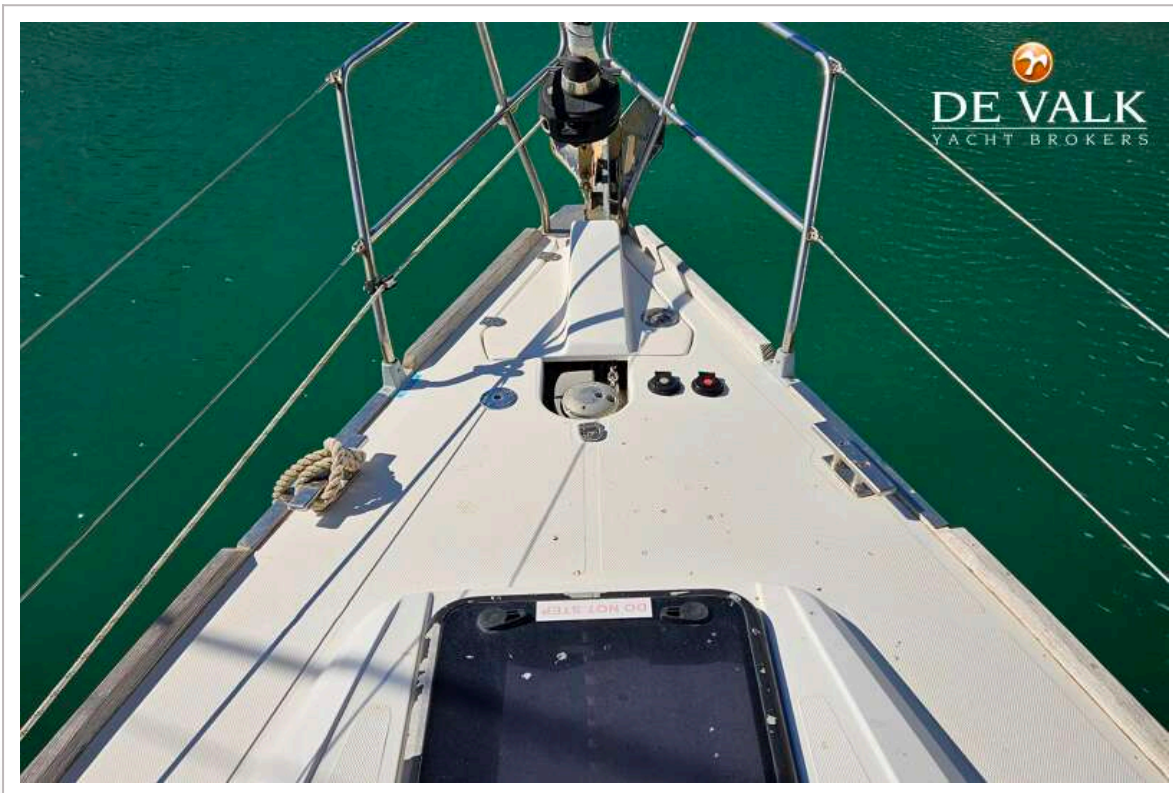
Tools	yes
Radio	JVC KD-X3428T
iPod connection	yes
Cockpit speakers	Clarion
Speakers in salon	Clarion
Fire extinguisher	yes
Extra info	Starlink module installed

RIGGING

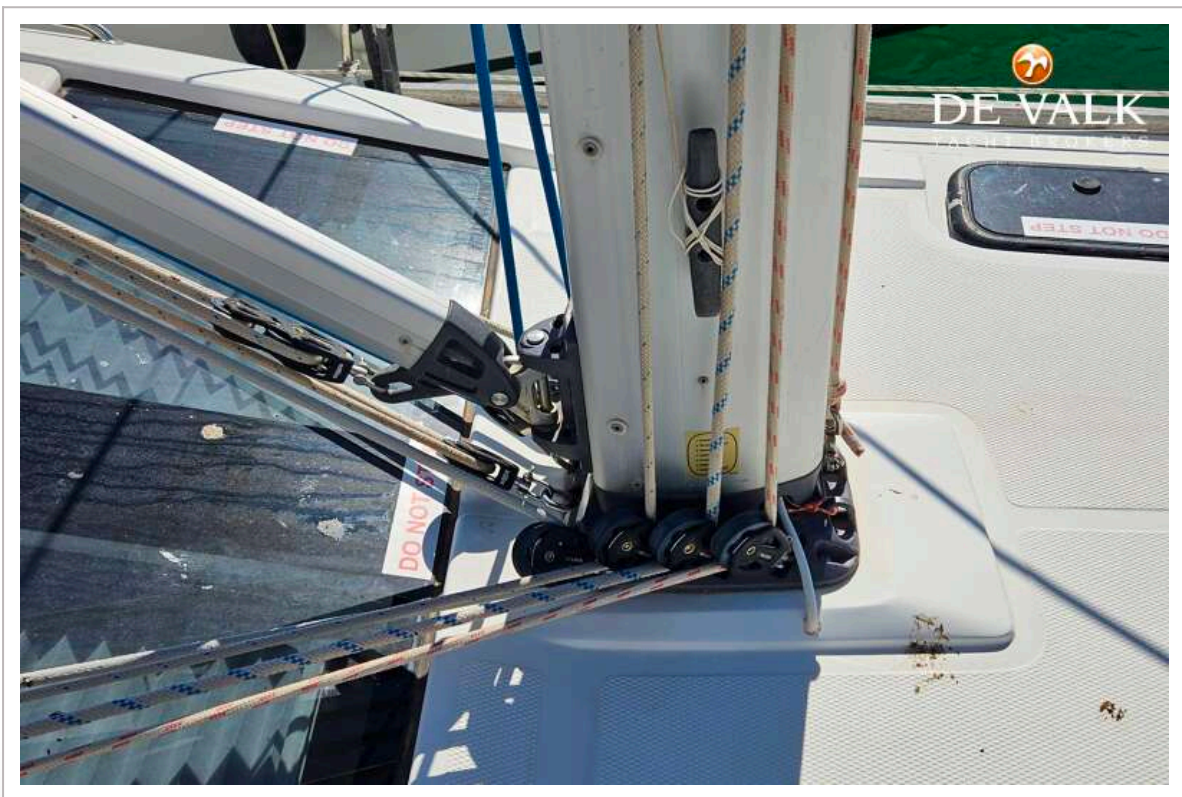
Rigging	fractional Sloop
Standing rigging	wire Original
Brand mast	Seldén
Material mast	aluminium
Spreaders	yes
Mainsail	Dracon (original)
Genoa	Dracon (new 2024)
Genoa furler	Selden Furlex 304S
Reefing System	main in-mast furling
Boomvang	mechanical and tackle Selden Rodkicker 20
Primary sheet winch	2 x Harken EVO 40 ST 2 SP
Halyard winches	Harken EVO 35 ST 2 SP
Reefing winch	Harken EVO 35 ST 2 SP



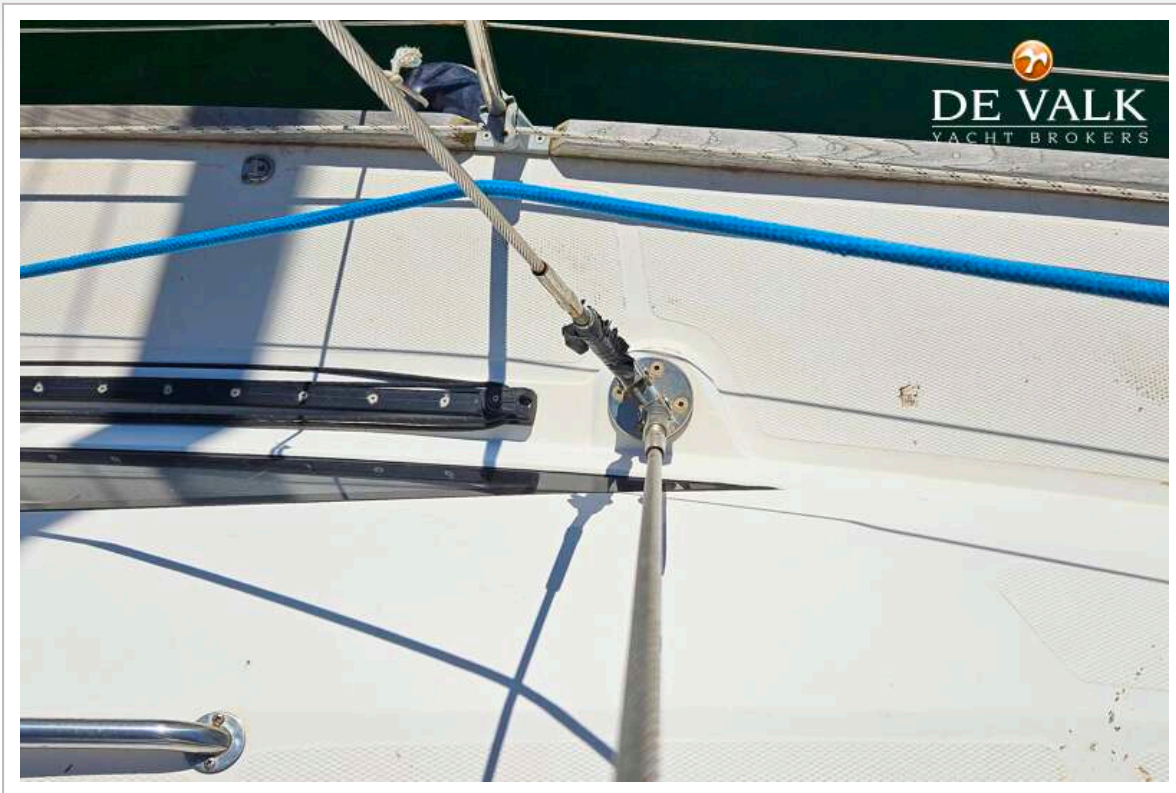
ELAN IMPRESSION 40



ELAN IMPRESSION 40



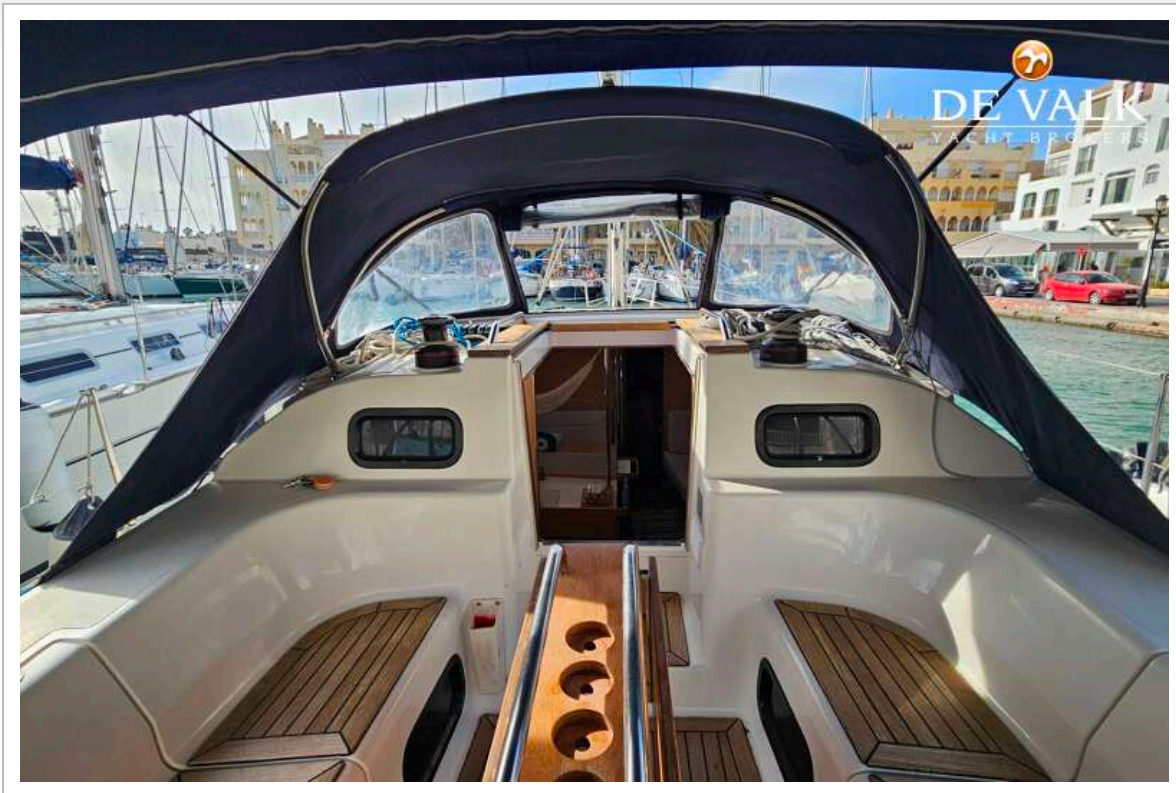
ELAN IMPRESSION 40



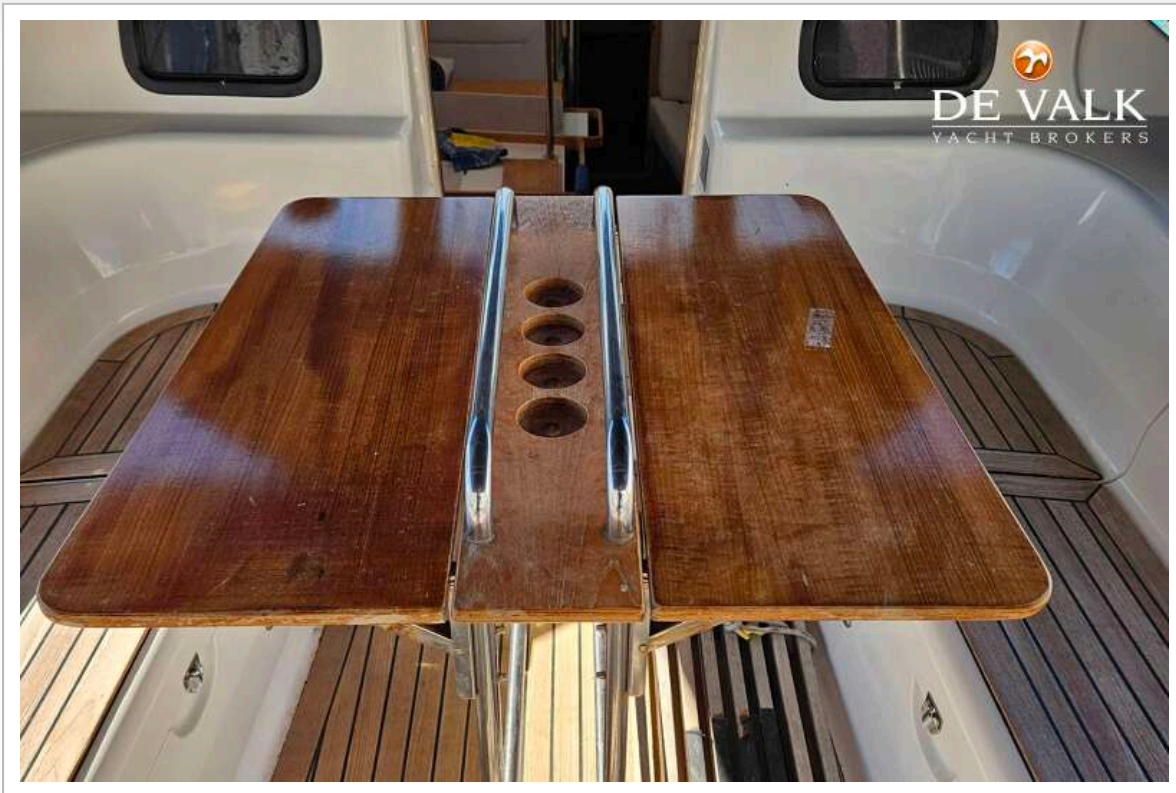
ELAN IMPRESSION 40



ELAN IMPRESSION 40



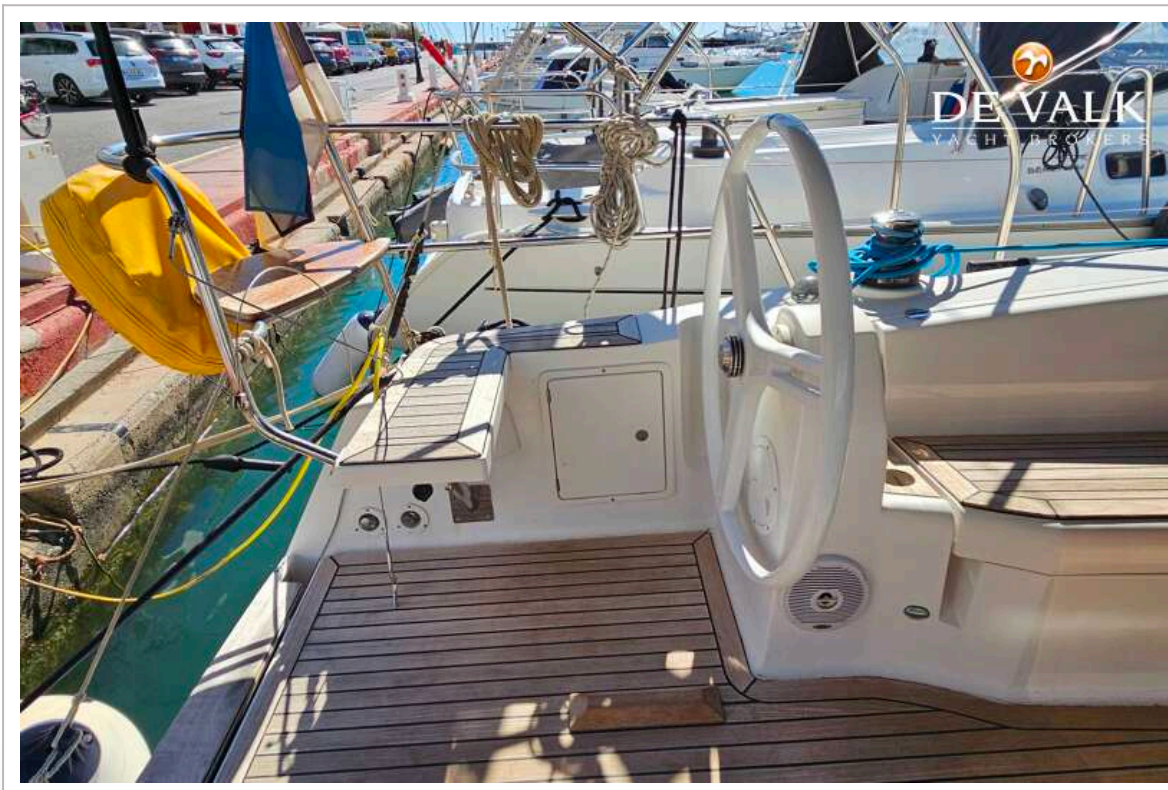
ELAN IMPRESSION 40



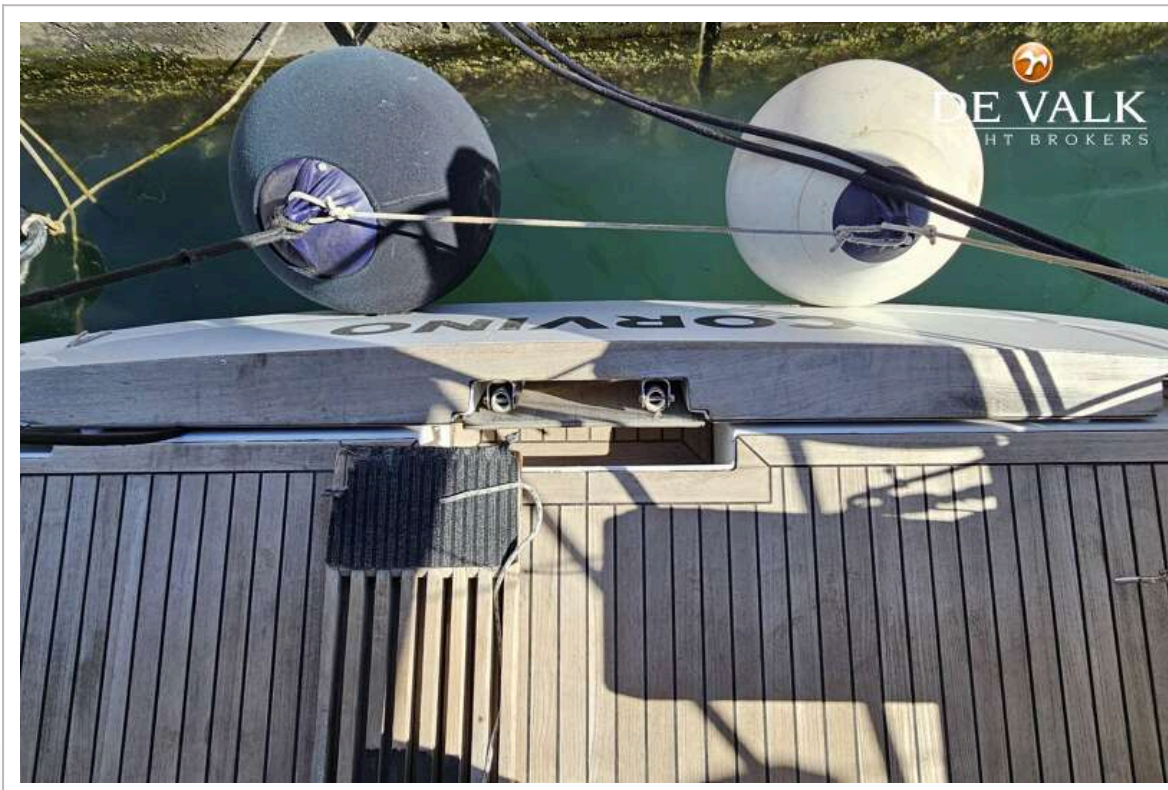
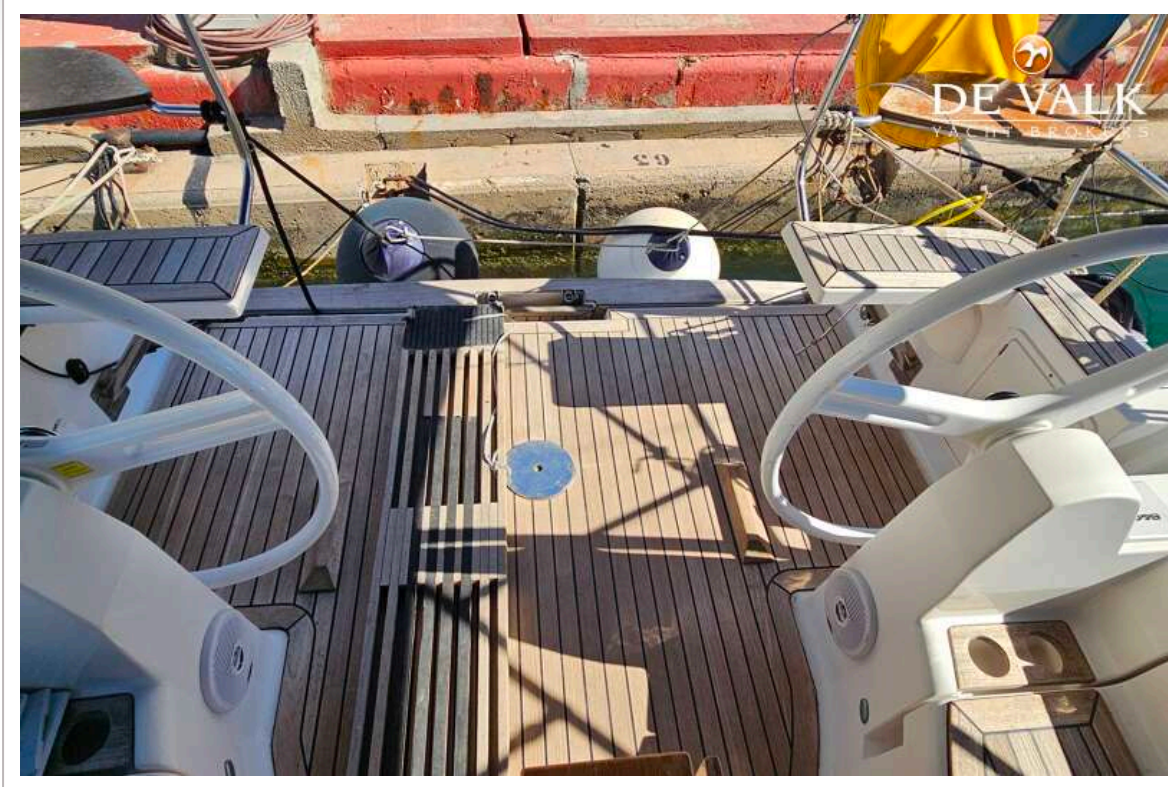
ELAN IMPRESSION 40



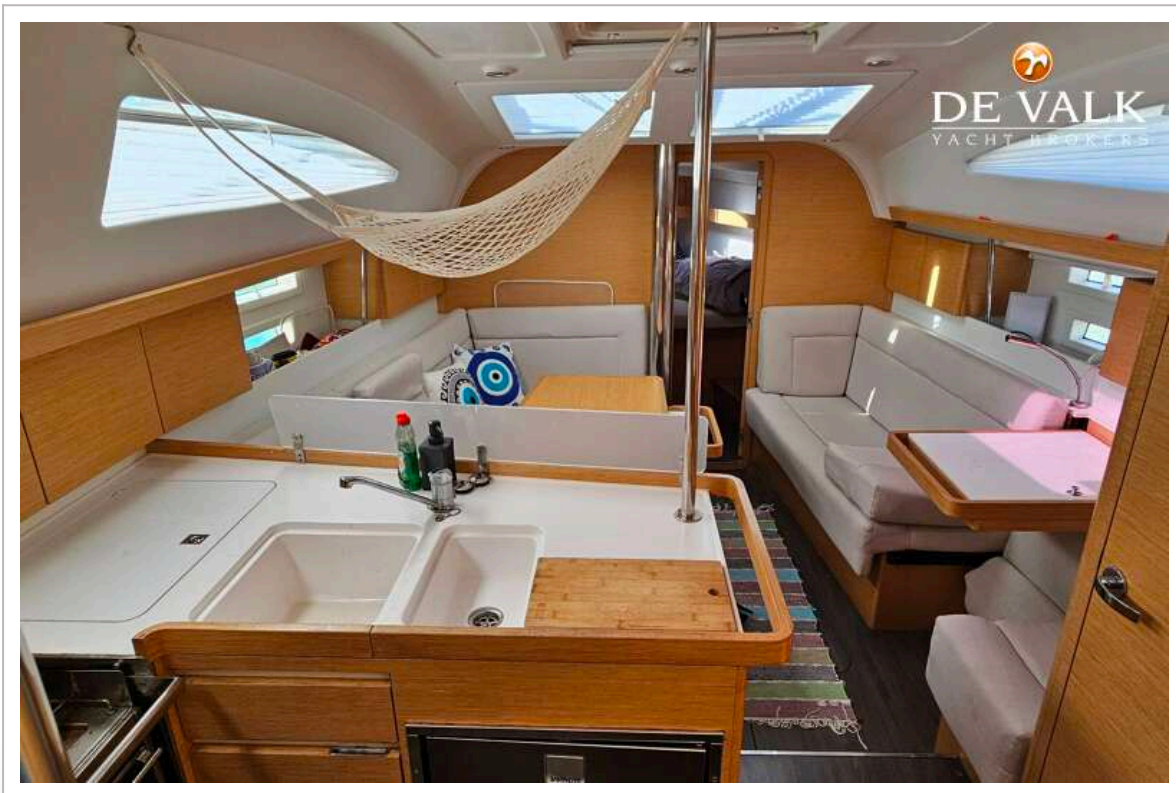
ELAN IMPRESSION 40



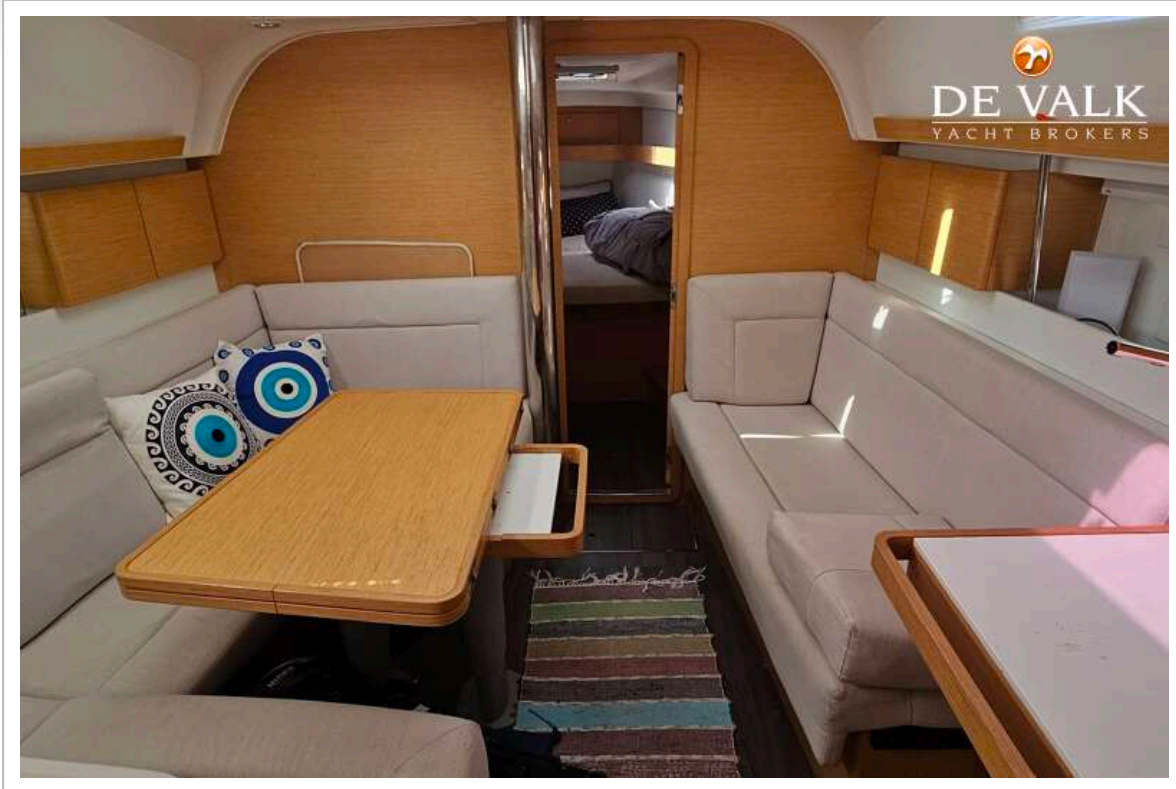
ELAN IMPRESSION 40



ELAN IMPRESSION 40



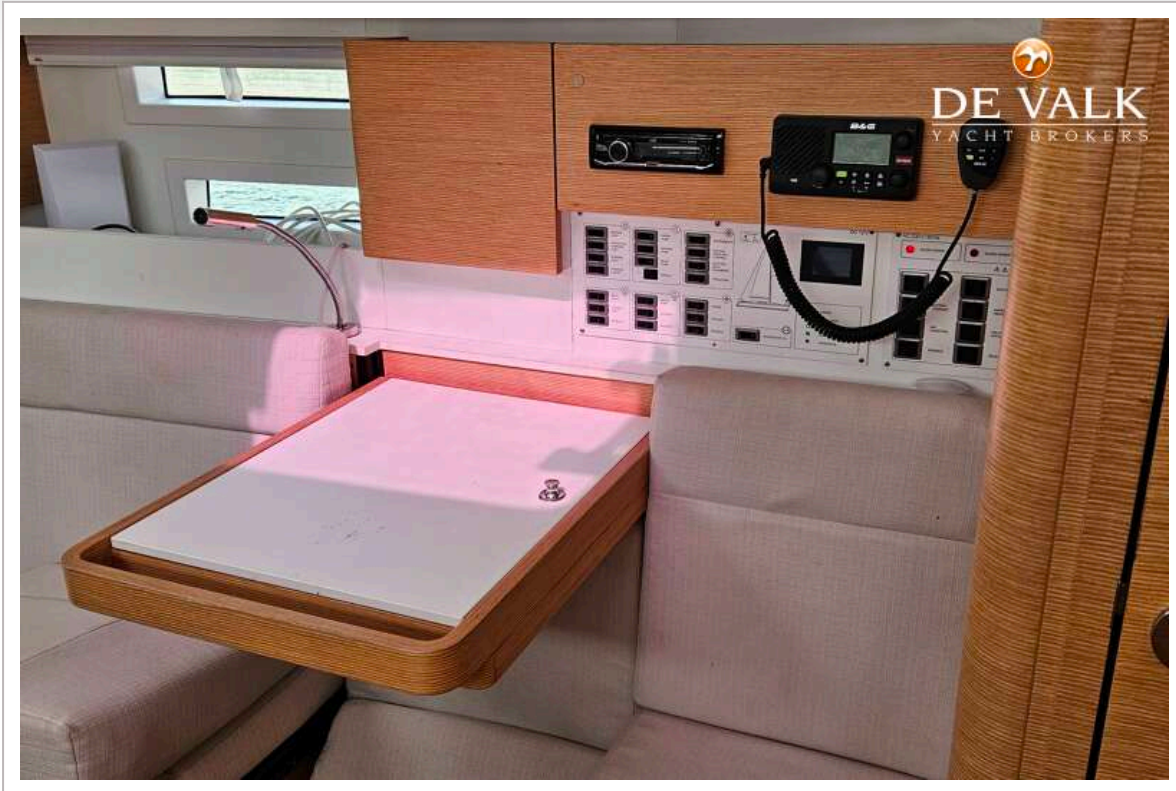
ELAN IMPRESSION 40



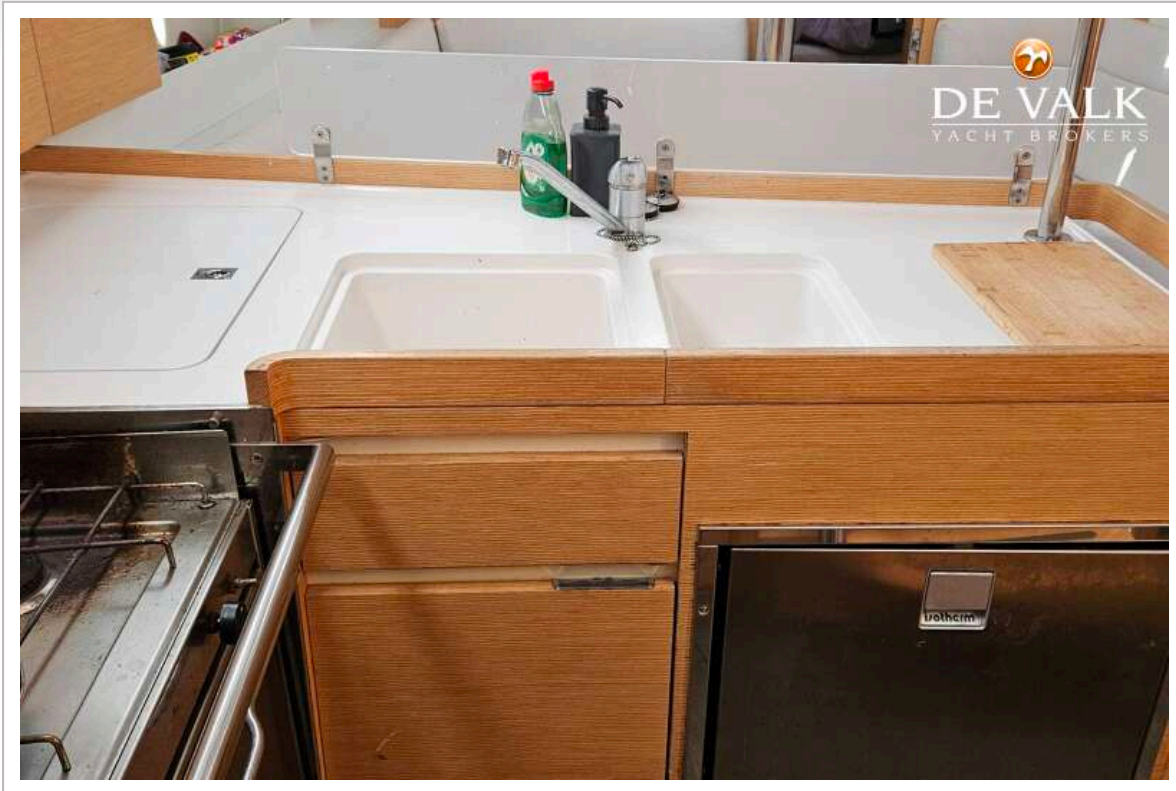
ELAN IMPRESSION 40

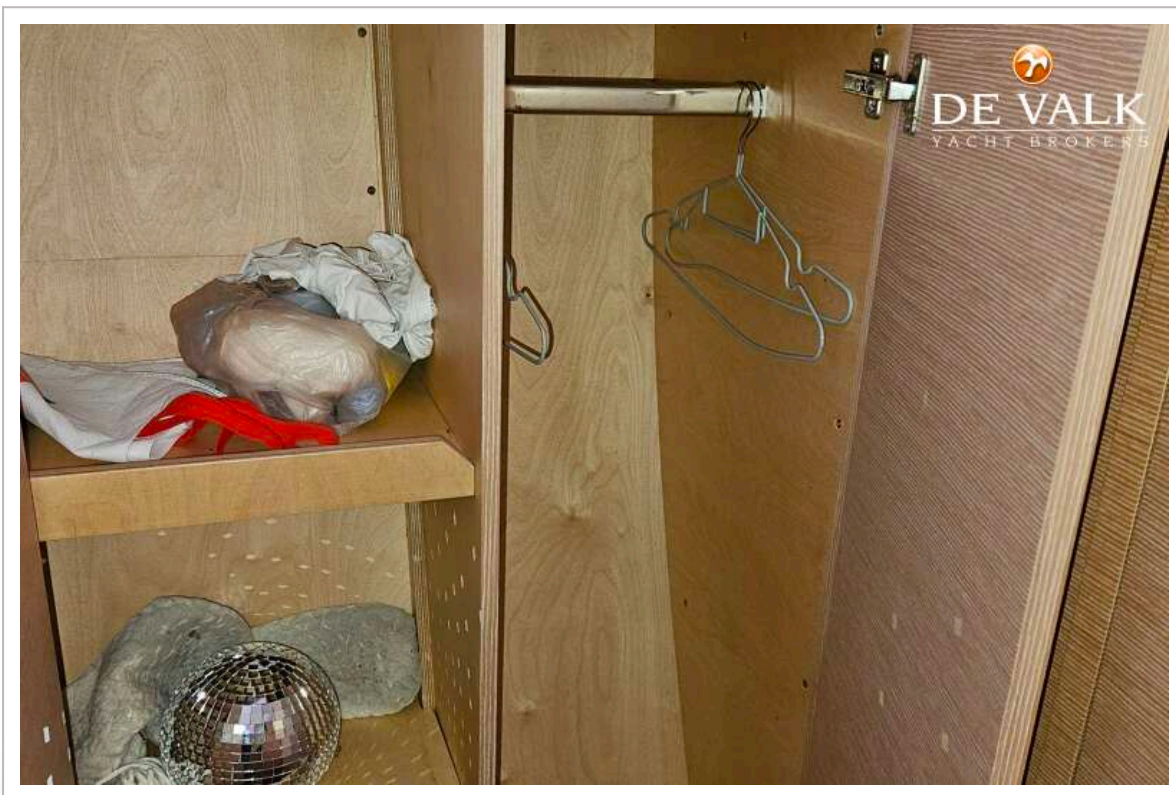
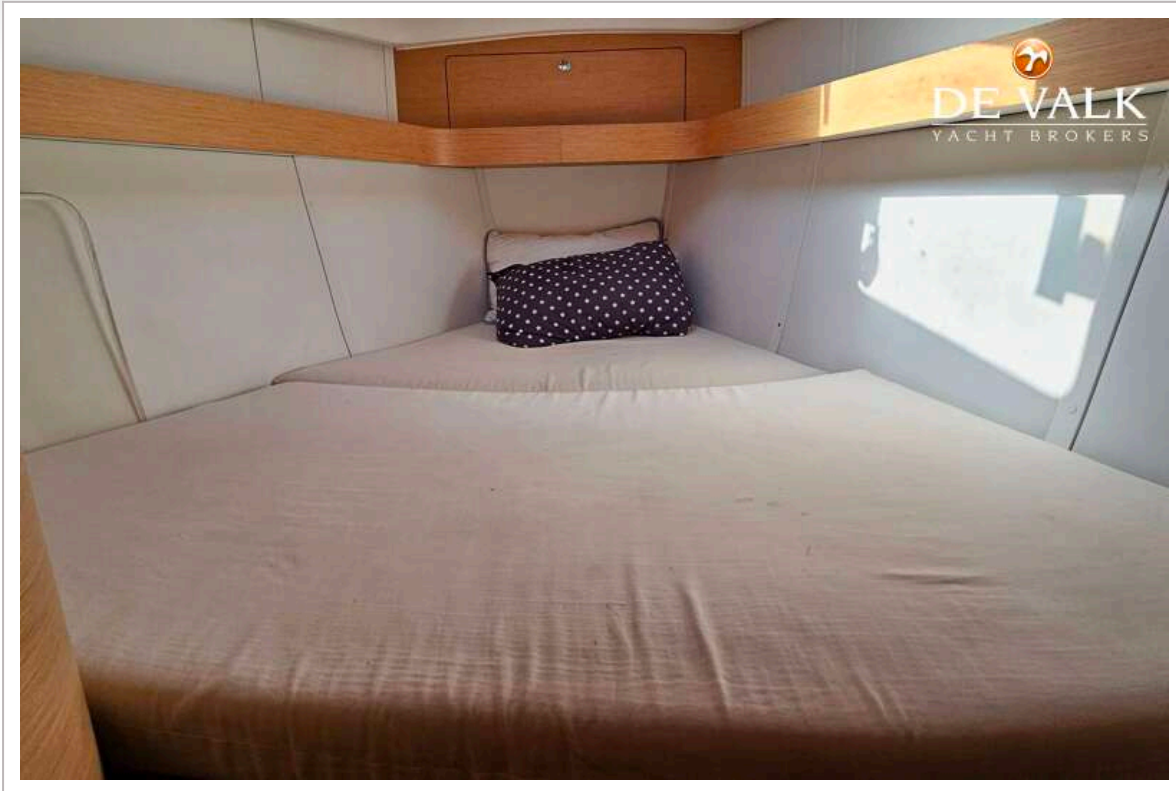


ELAN IMPRESSION 40

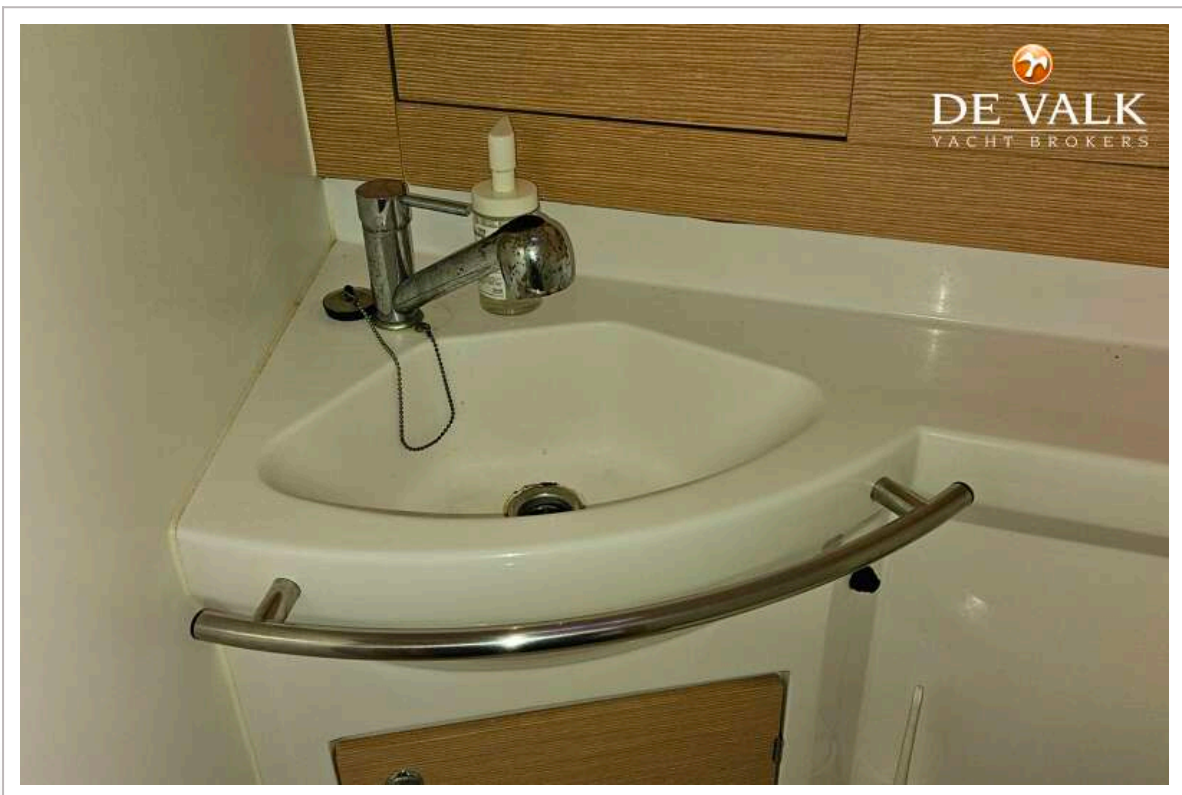
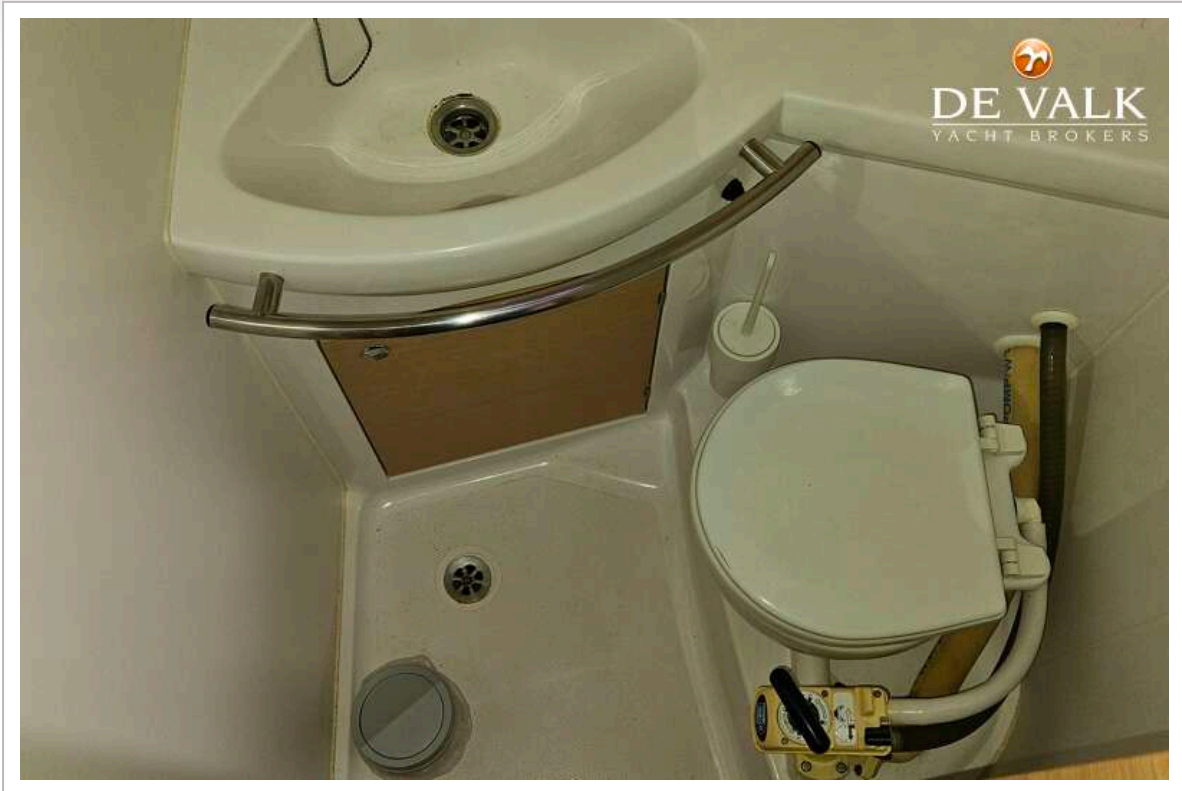


ELAN IMPRESSION 40

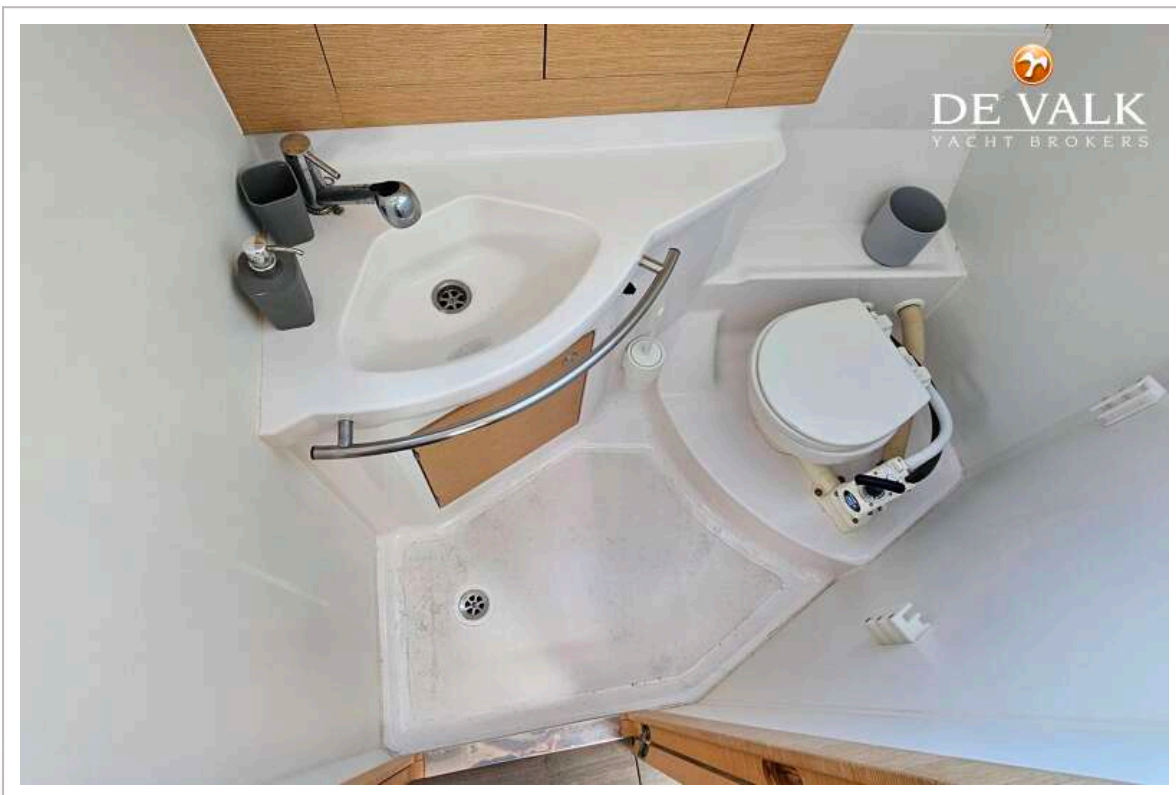




ELAN IMPRESSION 40



ELAN IMPRESSION 40



ELAN IMPRESSION 40



ELAN IMPRESSION 40

