



VRI-JON CONTESSA 40



DE VALK
YACHT BROKERS

BROKER'S COMMENTS

The Vri-Jon Contessa 40 "Malenka", built in 2008, is a very well-maintained motor yacht presented in excellent condition. This solidly built Dutch yacht offers a fine balance of comfort, reliability and pleasant handling. Both the interior and exterior are clean, fresh and clearly cared for. Technically, "Malenka" is in good order and fully ready to cruise. Her practical and spacious layout makes her suitable for both short trips and extended stays on board. An attractive, turn-key opportunity for those seeking proven quality.

Jochem Heijermans

SPECIFICATIONS

Dimensions	12.10 x 3.80 x 1.20 (m)	Builder	Vri-Jon DSA Yachts
Built	2008	Cabins	1
Material	Steel	Berths	4
Engine(s)	1 x Volkswagen TDI 120-5 diesel	Hp/Kw	120.00 (hp), 88.32 (kw)
Asking price	€ 159.000 (VAT Paid)	Lying	elsewhere / Not at sales office

CONTACT

Sales office	De Valk Belgium	Telephone	+32 586 80 218
Address	1401 PT Nieuwpoort BE	E-mail	belgium@devalk.nl

DISCLAIMER

These particulars are given in good faith as supplied but cannot be guaranteed.



GENERAL

Model	VRI-JON CONTESSA 40
Type	motor yacht
LOA (m)	12,10
Beam (m)	3,80
Draft (m)	1,20
Air draft (m)	3,35
Air draft min (m)	2,75
Headroom (m)	2,00
Year built	2008
Builder	Vri-Jon DSA Yachts
Country	The Netherlands
Displacement (t)	12
CE norm	C
Hull material	steel
Hull colour	white
Hull shape	multi hard chine
Keel type	yes
Superstructure material	steel
Rubbing strake	stainless steel
Deck material	steel
Deck finish	cork
Superstructure deck finish	paint (2025)
Cockpit deck finish	cork
Antifouling (year)	2025
Dorades	yes
Window frame	aluminium
Window material	tempered glass
Deckhatch	yes
Portholes	aluminium
Insulation	foam



Radar arch	collapsible
Fuel tank (litre)	steel 600
Level indicator (fuel tank)	yes
Freshwater tank (litre)	stainless steel 2x 240
Level indicator (freshwater)	yes
Blackwater tank (litre)	polyethylene 100
Level indicator (blackwater)	yes
Blackwater tank extraction	deck extraction + pump
Greywater tank (litre)	yes
Wheel steering	hydraulic
More info on hull	yes
More info on paintwork	Polished (2025)

ACCOMMODATION

Cabins	1
Berths	4
Interior	teak
Floor	carpet + teak and holly
Aft deck	yes
Saloon	yes
Headroom saloon (m)	2,00
Heating	diesel ducted hot air Eberspacher Airtronic
Aft Cabin	yes
Dinette	yes
Dinette to convert into berth	yes
Opening door to aft deck	yes
Galley	yes
Countertop	corian
Sink	stainless steel
Cooker	calor gas 3 burner
Microwave/oven combi	yes



Fridge	With freezing compartment
Hot water system	220V + engine
Water pressure system	electrical
Owners cabin	French bed
Wardrobe	hanging and shelves
Bathroom	en suite
Toilet	en suite
Toilet system	electric
Wash basin	in the bathroom
Shower	en suite

MACHINERY

No of engines	1
Make	Volkswagen
Type	TDI 120-5
HP	120
kW	88.32
Fuel	diesel
Maximum speed (kn)	9
Cruising speed (kn)	7
Engine hours	1270
Engine cooling system	freshwater heat exchanger
Drive	shaft
Engine controls	bowden cable
Gearbox	hydraulic ZF 45A
Bowthruster	Vetus remote controll
Sternthruster	Vetus remote controll
Exhaust	watercooled
Thrust bearing	Pythondrive
Propeller blades	4
Propeller shaft material	Bronze



Shaft lubrication	water
Manual bilge pump	yes
Electric bilge pump	yes
Electrical installation	12V/24V/220V
Generator	On engine VW Marine
Batteries	yes
Start battery	yes
Service battery	yes
Bowthruster battery	(2025)
Sternthruster battery	(2025)
Battery monitor	yes
Battery charger	Victron Phoenix 24V/25Ah
Battery charger/inverter	Victron Multiplus 24V/3000W/70Ah
Shorepower	with cable
Insulation transformer	Victron

NAVIGATION

Electric compass	Raymarine
Depth sounder	Raymarine ST60+
VHF	Raymarine (2023)
Rudder angle indicator	Raymarine ST60+
Plotter/GPS	Raymarine C80
Navigation lights	yes

EQUIPMENT

Cockpit cover	Repaired (2025)
Bimini	(2025)
Cockpit cushions	yes
Cockpit table	yes
Cockpit chairs	yes
Bathing platform	yes



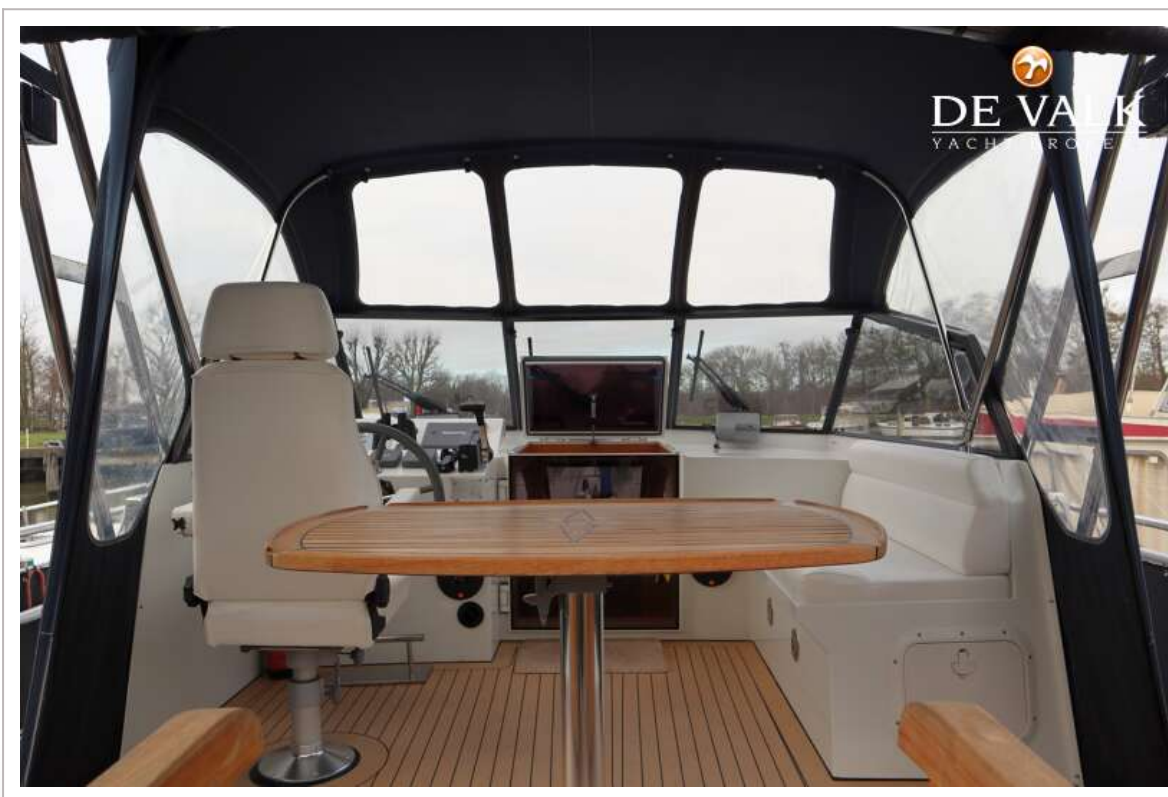
Gangway	yes
Deck shower	yes
Anchor	RVS
Windlass	manual
Sea railing	stainless steel
Grab rail (superstructure)	stainless steel
Railing side opening gates	2x
Pushpit	yes
Pulpit	yes
Fenders	yes
Mooring lines	yes
TV	yes
Radio	yes
Cockpit speakers	yes
Speakers in salon	yes



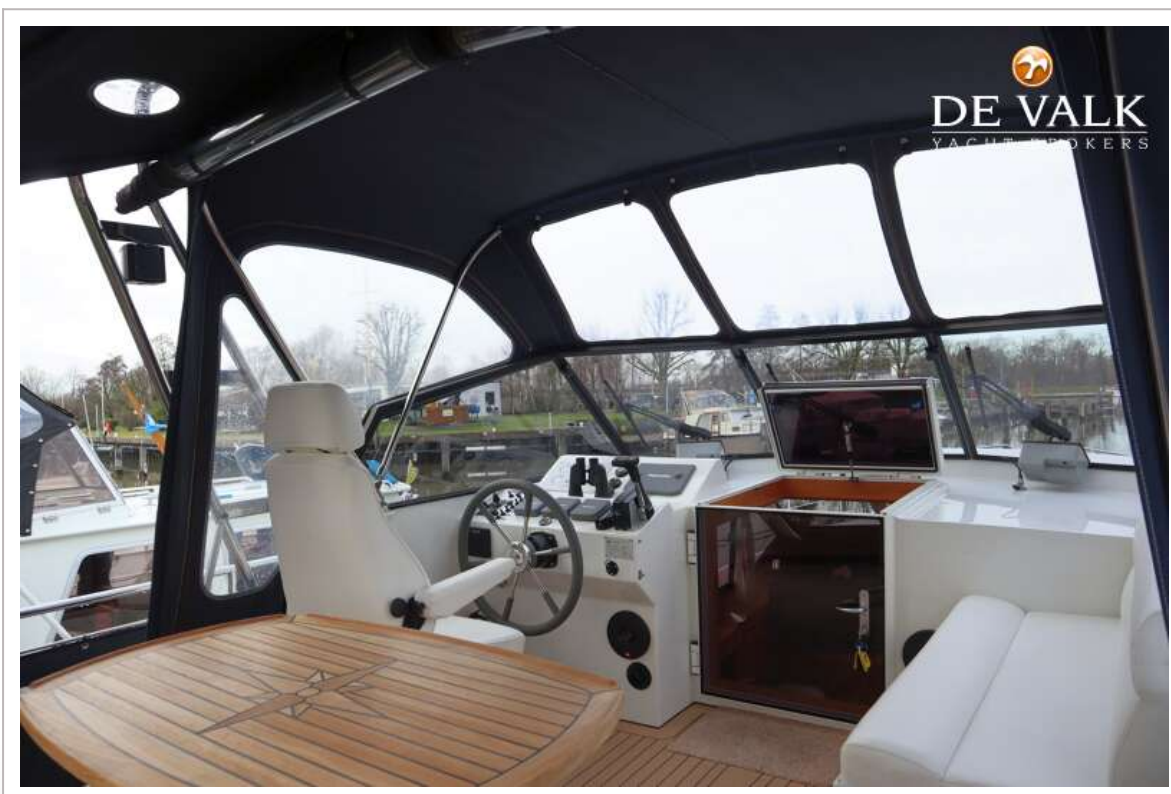
VRI-JON CONTESSA 40



VRI-JON CONTESSA 40



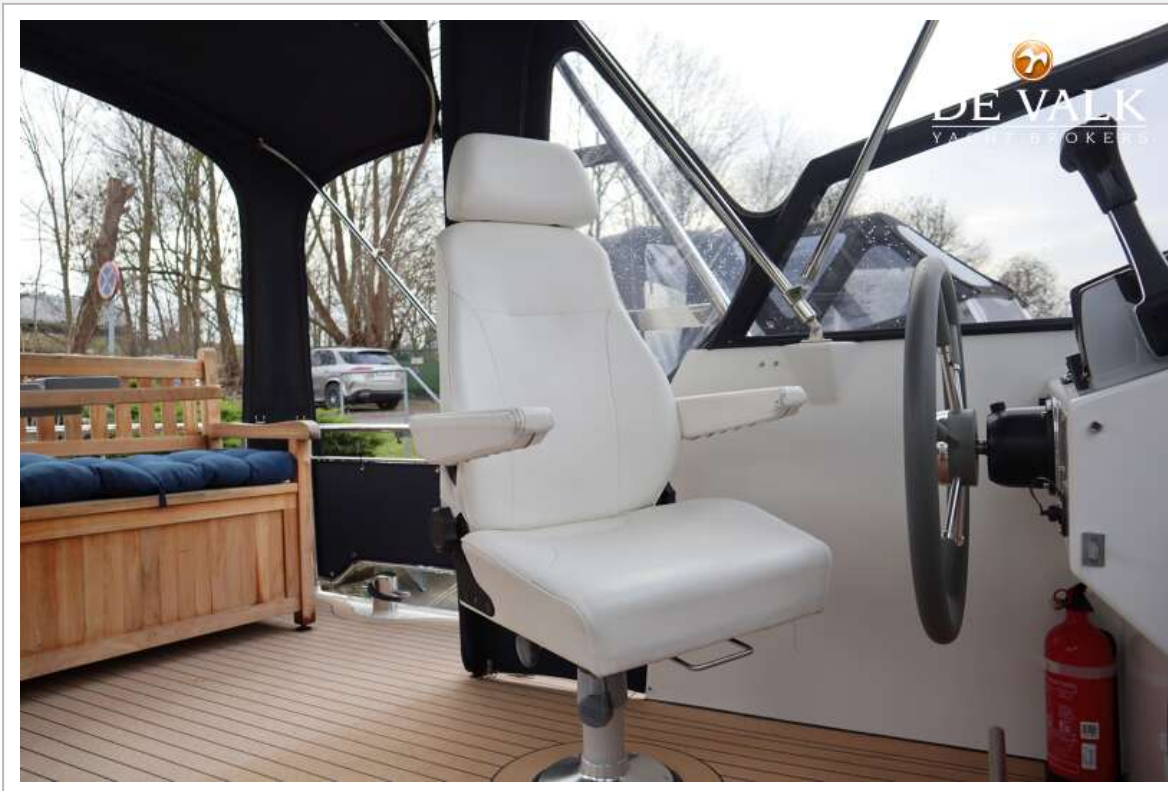
VRI-JON CONTESSA 40



VRI-JON CONTESSA 40



VRI-JON CONTESSA 40





VRI-JON CONTESSA 40





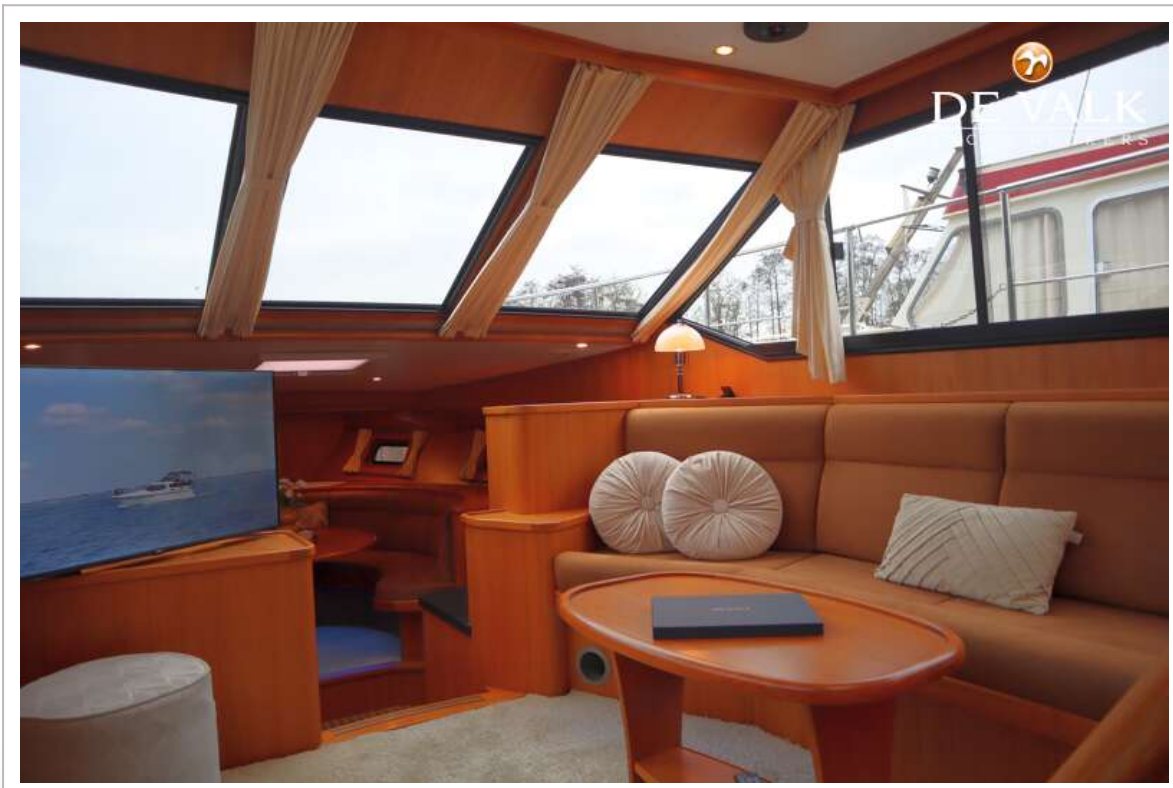
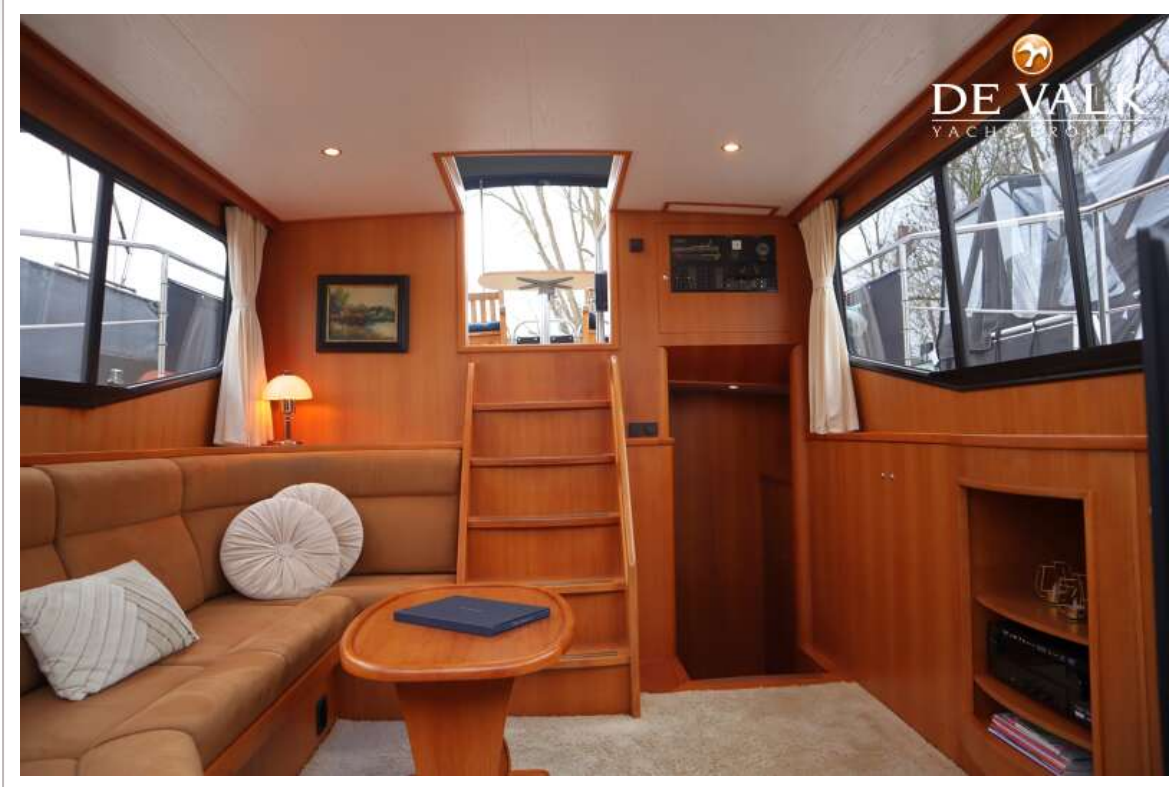
VRI-JON CONTESSA 40



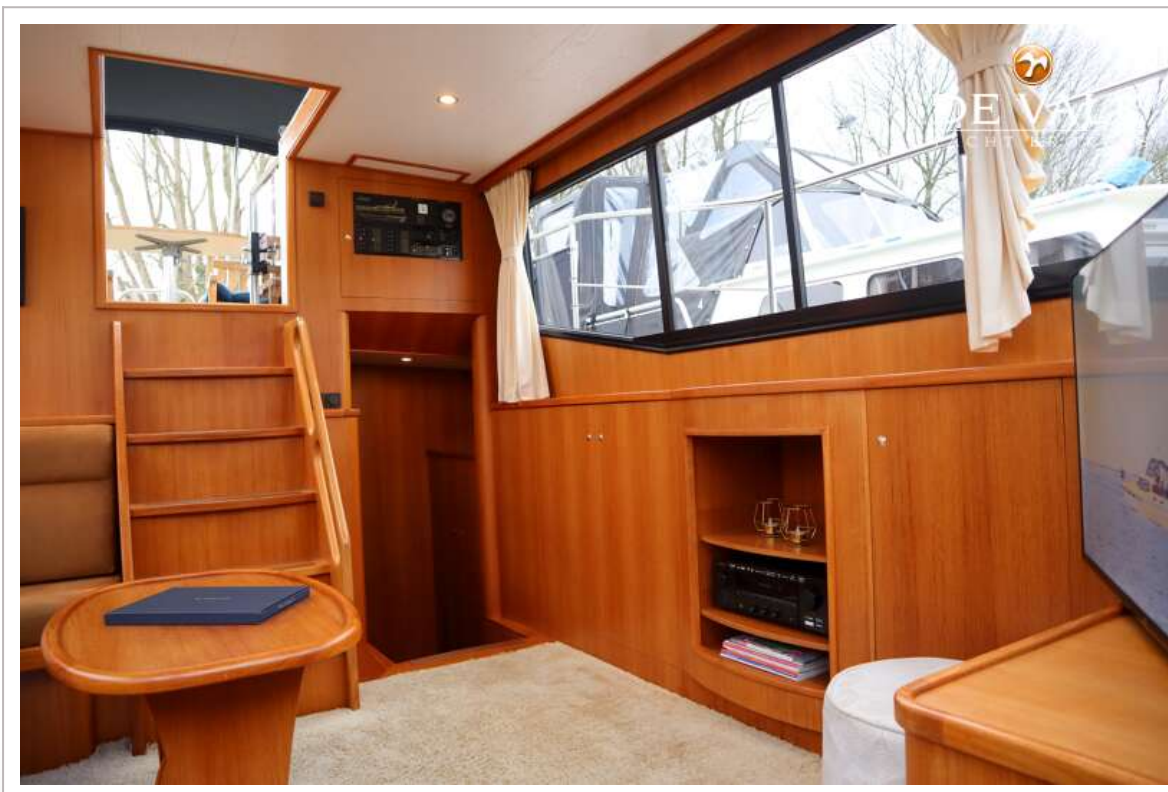
VRI-JON CONTESSA 40



VRI-JON CONTESSA 40



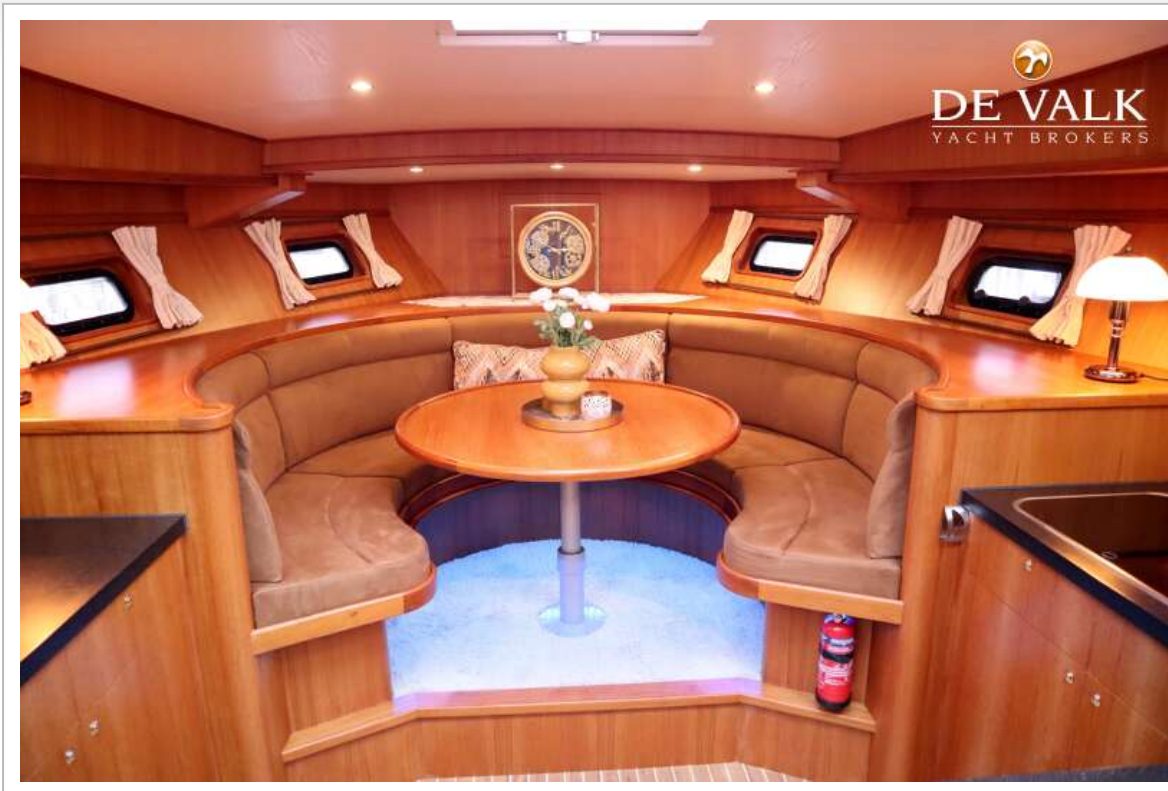
VRI-JON CONTESSA 40



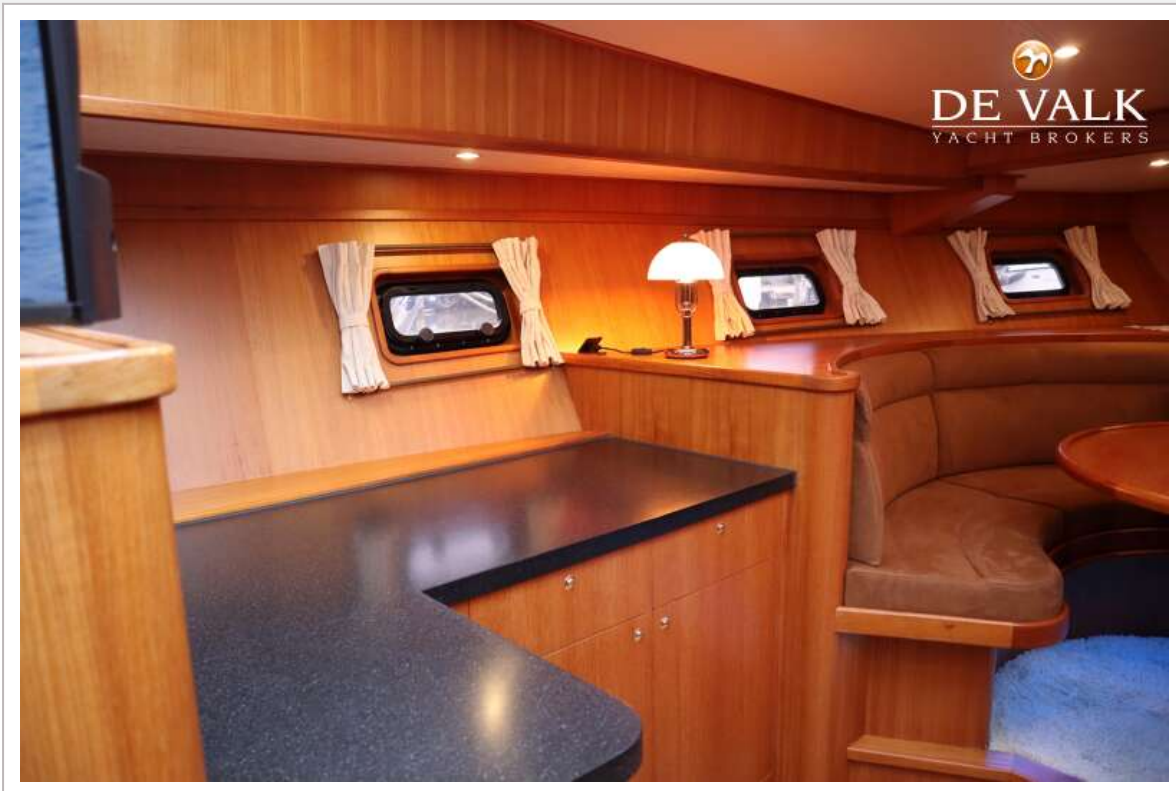
VRI-JON CONTESSA 40



VRI-JON CONTESSA 40



VRI-JON CONTESSA 40

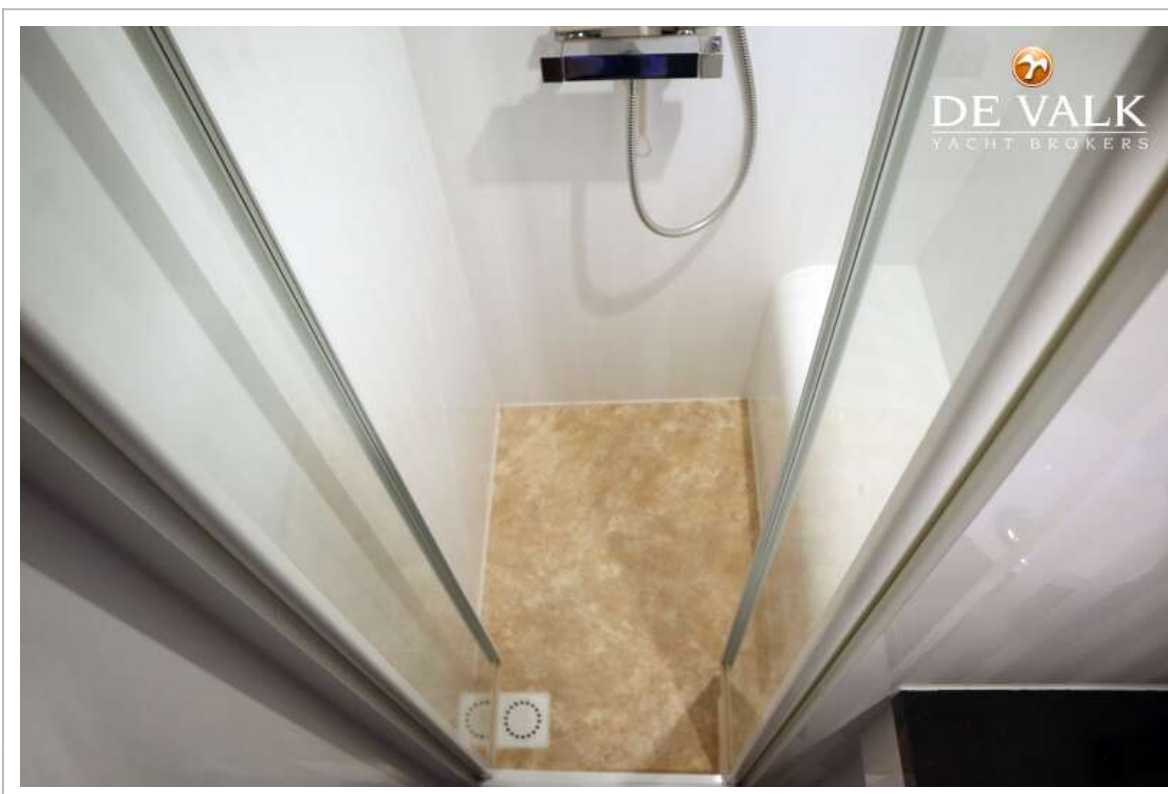
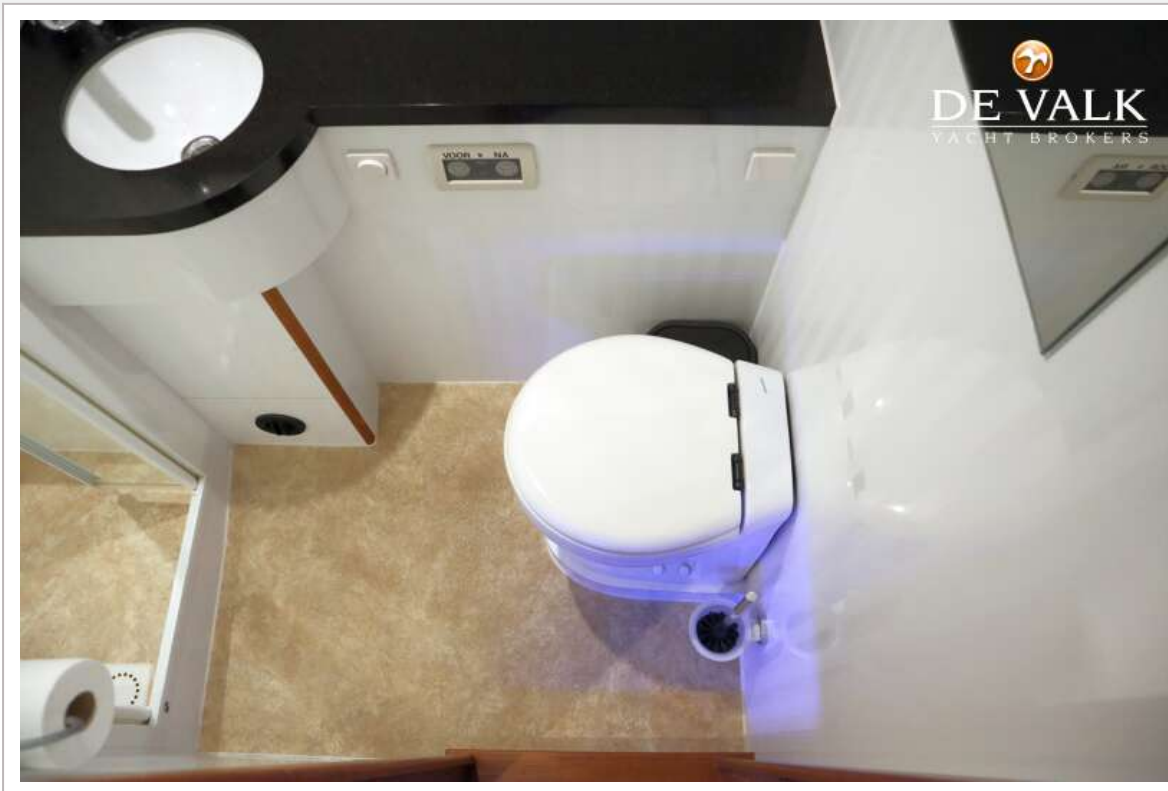


VRI-JON CONTESSA 40



VRI-JON CONTESSA 40





VRI-JON CONTESSA 40



