



DE VALK
YACHT BROKERS



HANSE 400



DE VALK
YACHT BROKERS

BROKER'S COMMENTS

"It is exceptionally rare to find a 2011 yacht maintained according to such a rigorous, no-compromise philosophy. The owner has systematically renewed all critical systems, including a complete standing rigging replacement in 2025 and a fully integrated, latest-generation B&G electronics installed in 2024. The recent addition of a 2025 watermaker and high-spec Technora sail inventory places this yacht in a category of her own - not simply turnkey, but thoroughly optimized for extended, self-sufficient blue-water cruising, while remaining highly manageable for short-handed operation"

Alessio Sabeni

SPECIFICATIONS

Dimensions	12.10 x 4.04 x 2.05 (m)	Builder	Hanse Yachts A.G.
Built	2011	Cabins	3
Material	GRP	Berths	6
Engine(s)	1 x Volvo Penta D2 - 40 diesel	Hp/Kw	40.00 (hp), 29.44 (kw)
Asking price	sold (VAT)	Lying	Italy

CONTACT

Sales office	De Valk Rome	Telephone	+39 06 65 81221
Address	c/o Nautilus Marina Srl, Via Monte Cadria, 127 00054 Fiumicino Roma IT	E-mail	rome@devalk.nl

DISCLAIMER

These particulars are given in good faith as supplied but cannot be guaranteed.



GENERAL

Model	HANSE 400
Type	sailing yacht
LOA (m)	12,10
LWL (m)	10,80
Beam (m)	4,04
Draft (m)	2,05
Year built	2011
Builder	Hanse Yachts A.G.
Country	Italy
Designer	Judel & Vrolijk
Displacement (t)	7,50
CE norm	A
Hull material	GRP
Hull colour	white
Keel type	bulb keel
Superstructure material	GRP
Deck material	GRP
Deck finish	teak
Cockpit deck finish	teak
Antifouling (year)	2025
Fuel tank (litre)	polyethylene 140
Freshwater tank (litre)	polyethylene 325
Blackwater tank (litre)	polyethylene
Blackwater tank extraction	deck extraction + uw line
Wheel steering	yes

ACCOMMODATION

Cabins	3
Berths	6
Interior	American cherry



HANSE 400

Layout	3 cabin 2 head
Floor	Maple style
Heating	diesel ducted hot air Eberspacher
Chart table	yes
Aft Cabin	yes
Dinette	yes
Galley	yes
Sink	stainless steel
Cooker	calor gas
Oven	yes
Microwave	yes
Fridge	Year 2025
Hot water system	220V + engine
Coffee maker	yes
Owners cabin	double bed
Bathroom	en suite
Toilet	en suite
Toilet system	manual
Shower	en suite
Guest cabin 1	double bed
Bathroom	separate
Toilet	separate
Toilet system	manual
Shower	yes
Guest cabin 2	double bed

MACHINERY

No of engines	1
Make	Volvo Penta
Type	D2 - 40
HP	40



kW	29.44
Fuel	diesel
Year installed	2011
Year of overhaul	Original Volvo Penta ECM interface integrated into NMEA 2000 BUS (visible on plotters) year 2023 Electronics replaced by Volvo Penta year 2023
Engine hours	684
Engine cooling system	seawater
Drive	sail-drive
Manual bilge pump	yes
Electric bilge pump	yes
Batteries	yes
Start battery	AGM year 2022
Service battery	AGM 320 ah year 2023
Battery monitor	Philippi for diesel and water
Battery charger	yes
Inverter	Victron 800w + BBS 2000w
Solar panel	2 solar panel 90w
Shorepower	with cable
Watermaker	Shenker Zen 30, year 2025

NAVIGATION

Compass	yes
Multi control display	B&G
Log	yes
VHF	yes
VHF handheld	yes
Autopilot	B&G
Radar	B&G Halo year 2024
Plotter	2 Vulcan year 2024
AIS receiver	B&G 500
Navigation lights	yes



EQUIPMENT

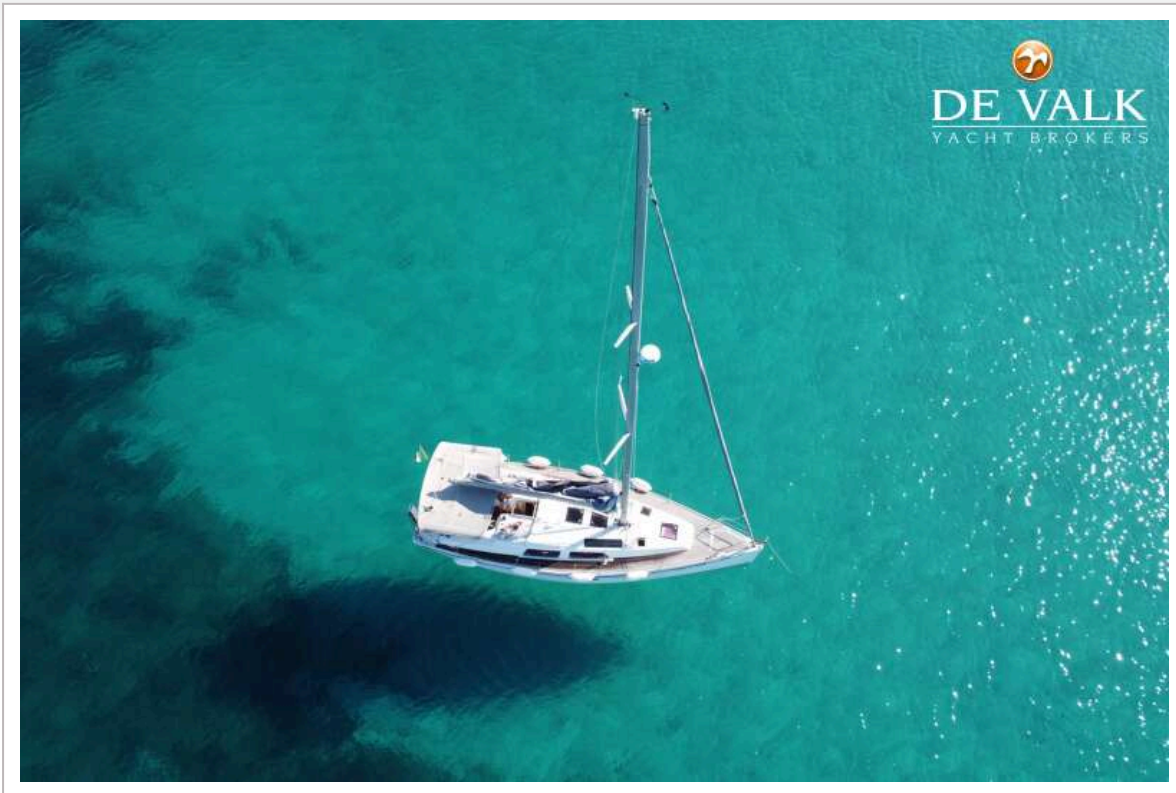
Bimini	Year 2023
Deck shower	yes
Anchor	Rocna Vulcan
Anchor chain	yes
Windlass	electrical
Dinghy	inflatable Acquamarina Cat- year 2025
Outboard	Torqueedo travel year 2013, new battery year 2025
Outboard support	yes
Pushpit	yes
Pulpit	yes
Radar reflector	yes
Fenders	yes
Mooring lines	yes
TV	yes
TV receiver	yes

RIGGING

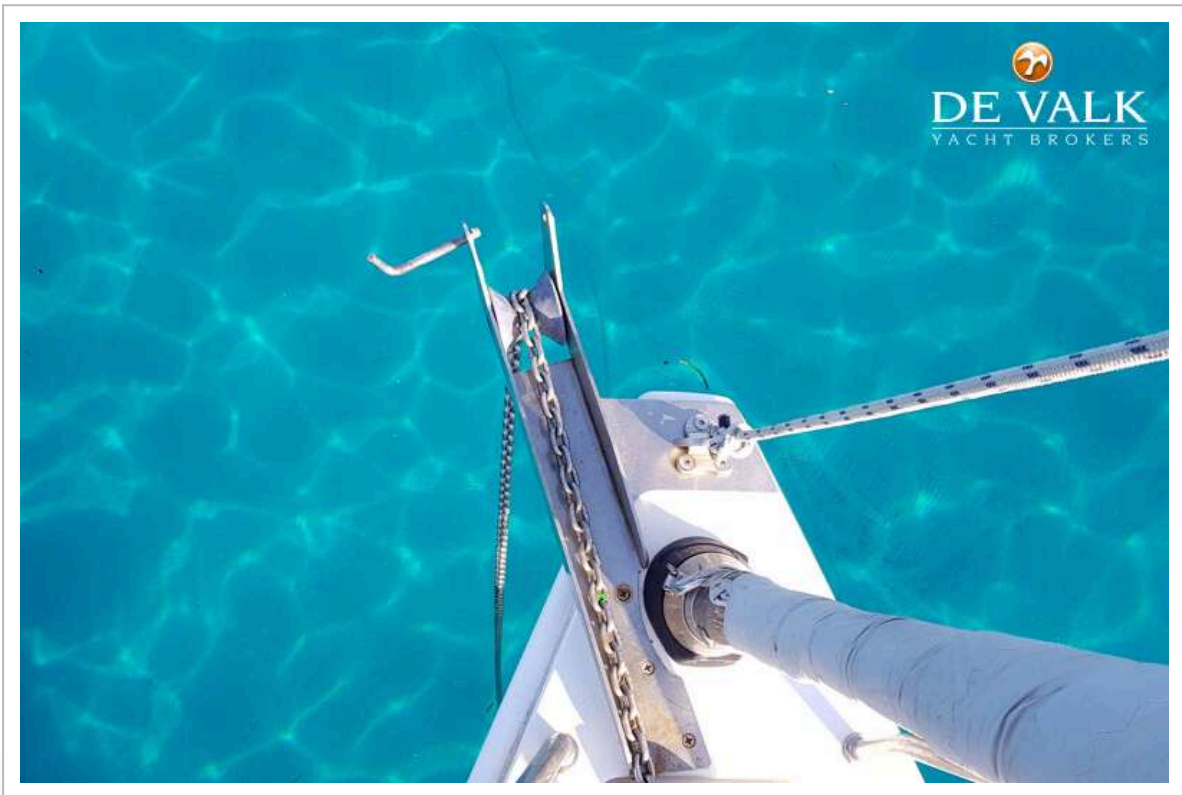
Rigging	sloop Year 2025
Standing rigging	wire
Material mast	aluminium
Spreaders	2
Mainsail	Technora Double Taffeta Black by Fastelli Sails (2020).
Mainsail cover	yes
Fully battened mainsail	yes
Jib	Technora Double Taffeta Black by Fastelli Sails (2020).
Gennaker	Material Nylon year 2012
Boomvang	gasspring Year 2025
Primary sheet winch	1 electric year 2012 + 1 manual
Secondary sheet winch	2 manual



HANSE 400



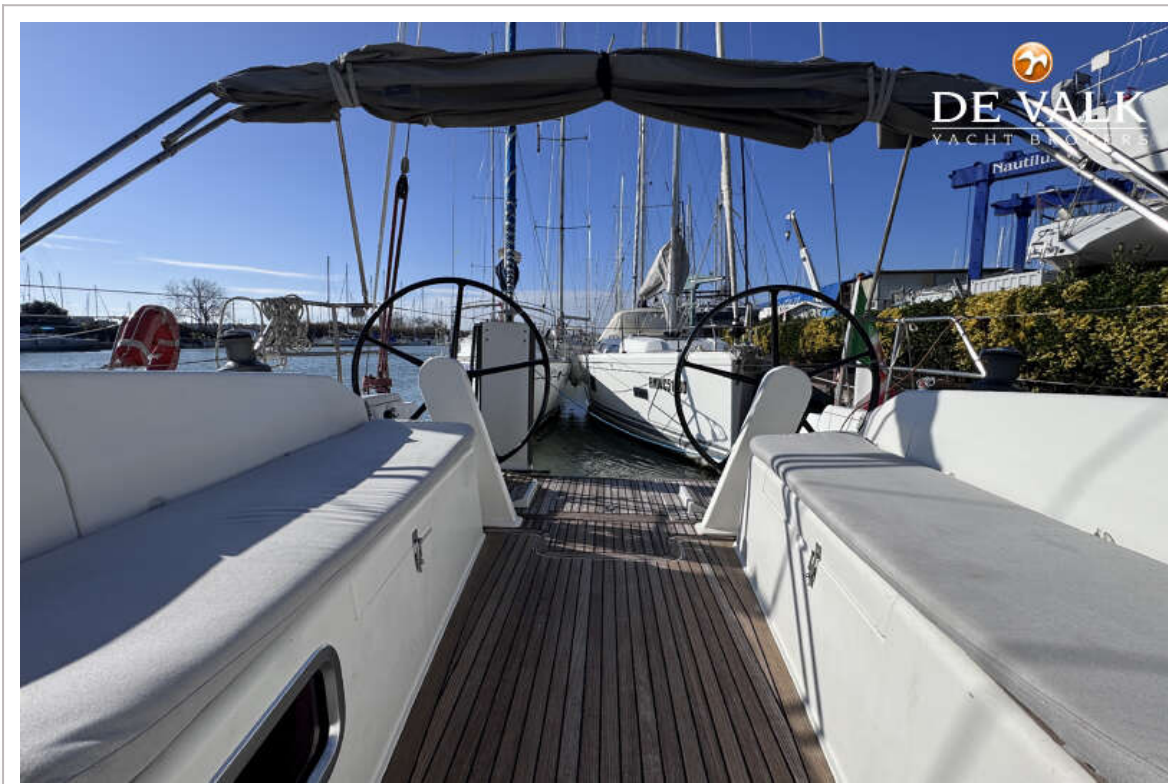
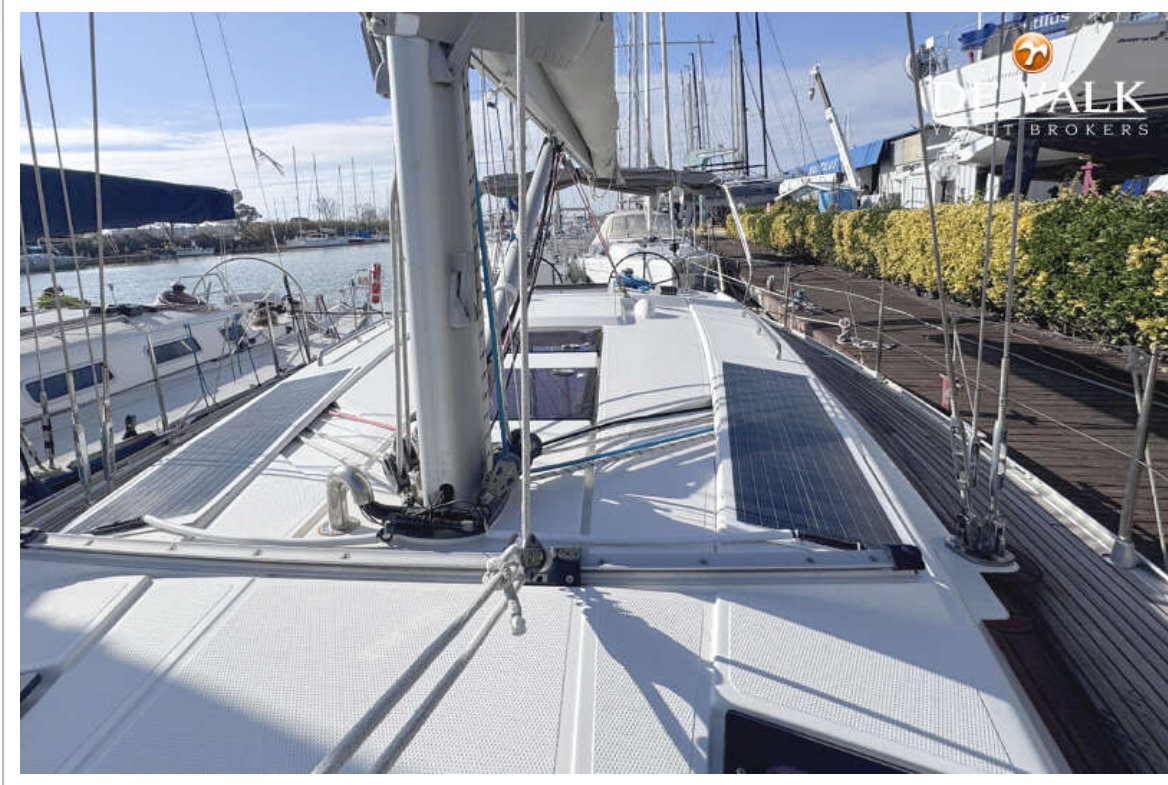
HANSE 400



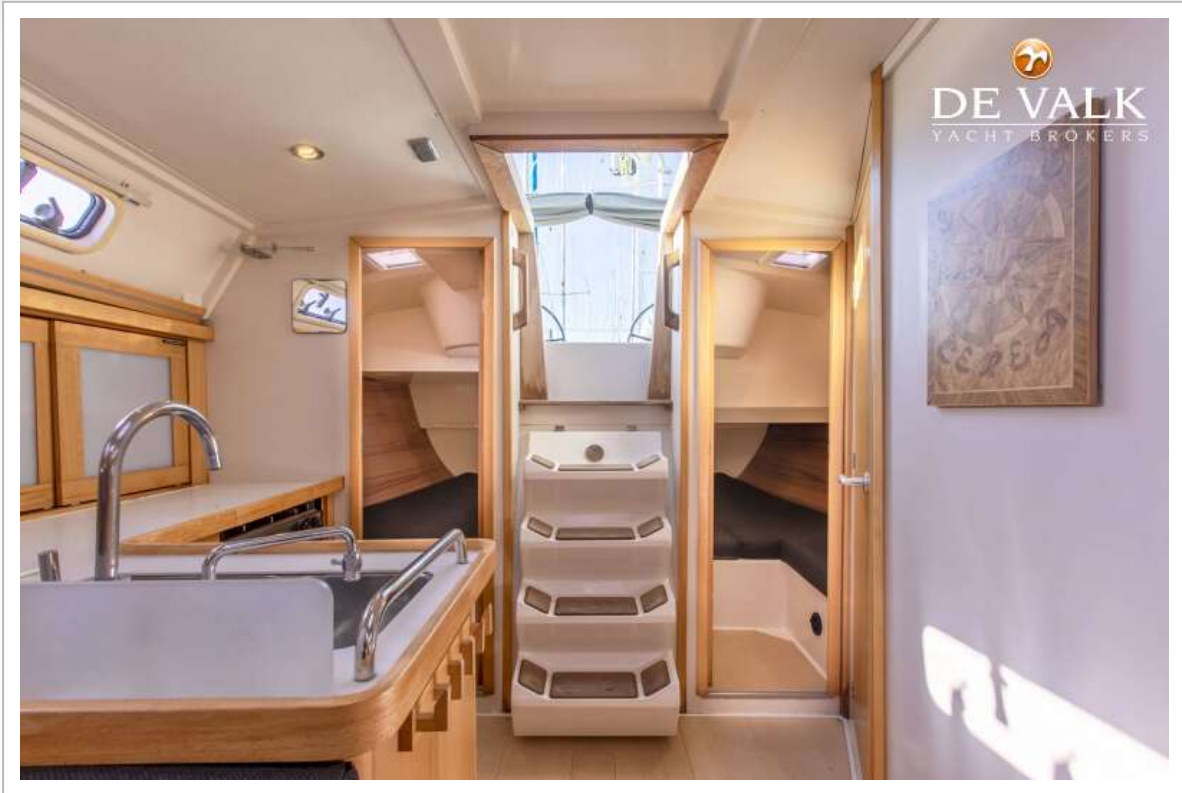
HANSE 400



HANSE 400



HANSE 400



HANSE 400



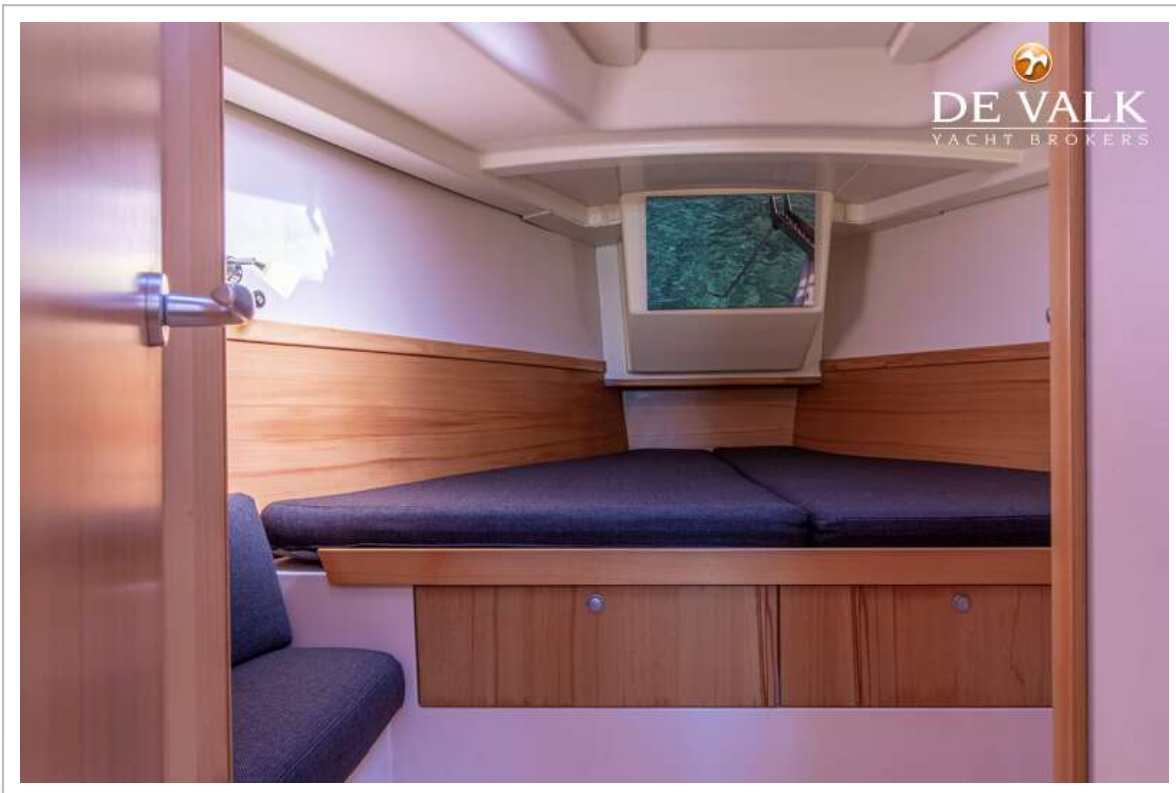
HANSE 400



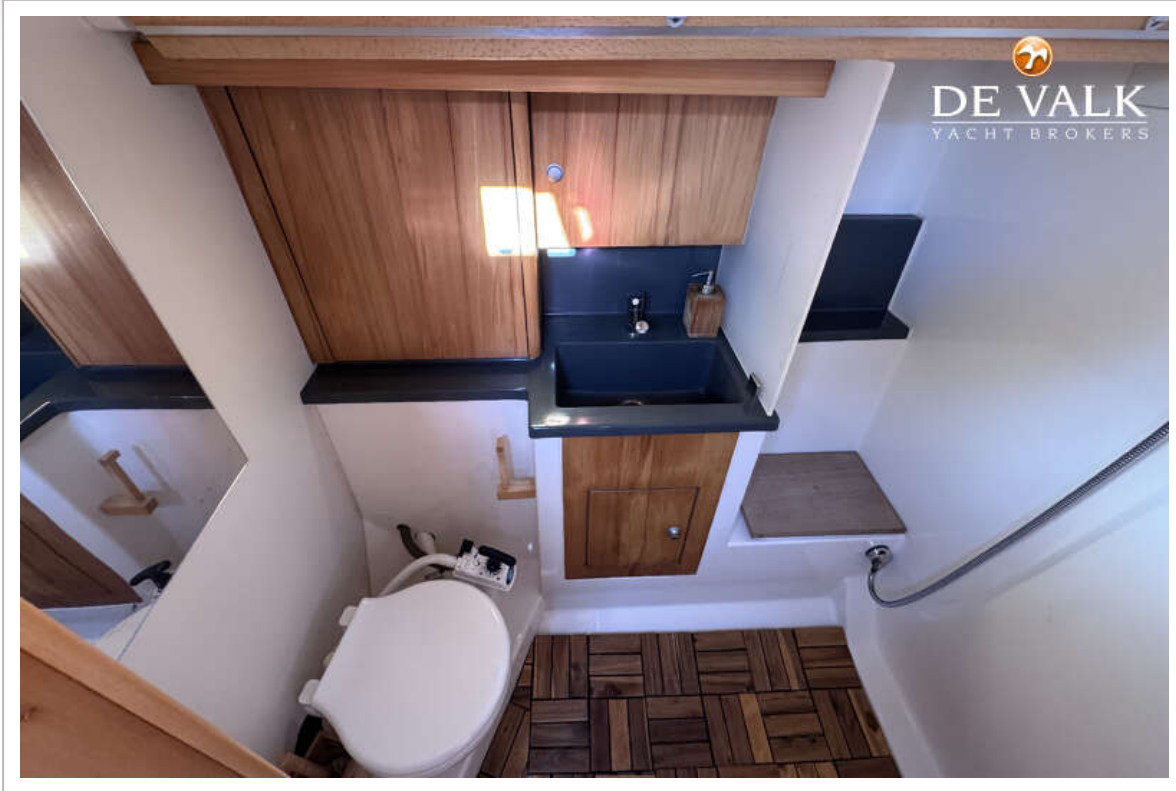
HANSE 400



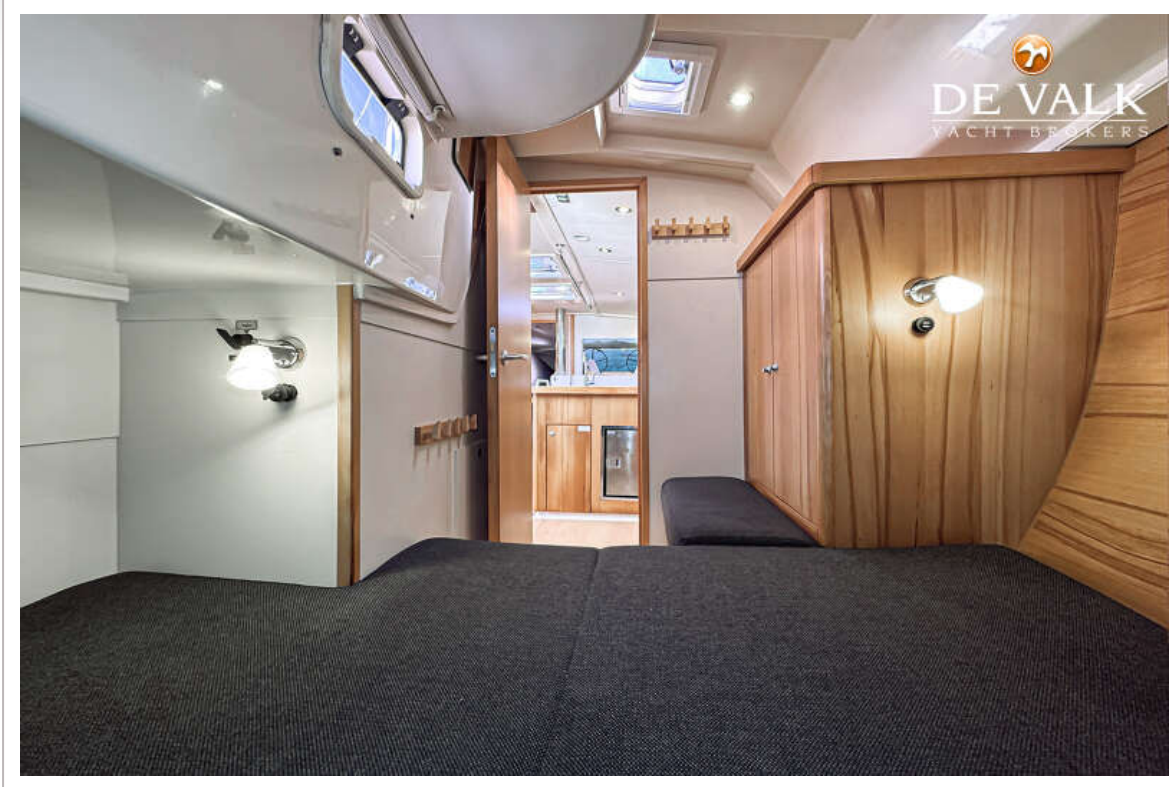
HANSE 400



HANSE 400



HANSE 400



HANSE 400

