



RO/PAX LAND CRAFT FERRY 58

# RO/PAX LAND CRAFT FERRY 58

## BROKER'S COMMENTS

RO/PAX small Ferry Boat that is in daily operation. Brand New Engines installed in 2025. Last Dry Docking in February 2024, Shaft & Props extracted and services in 2024. All licenses are Valid, Capacity of CARS: 52 PAX: 550 Class: INSB GMDSS: A1

*Sofia Ilia-Salvanou*

## SPECIFICATIONS

<b>Dimensions</b>	58.00 x 11.68 x 2.30 (m)	<b>Builder</b>	
<b>Built</b>	1979	<b>Cabins</b>	
<b>Material</b>	Steel	<b>Berths</b>	
<b>Engine(s)</b>	2 x CATERPILLAR 3412 diesel	<b>Hp/Kw</b>	2 x 317.00 (hp), 233.31 (kw)
<b>Asking price</b>	€ 770.000 (VAT Not paid)	<b>Lying</b>	elsewhere / Not at sales office

## CONTACT

<b>Sales office</b>	De Valk Corfu	<b>Telephone</b>	(+30) 266 111 8095
<b>Address</b>	New Port of Corfu, near Gouvia Marina 490 83 Corfu GR	<b>E-mail</b>	corfu@devalk.nl

## DISCLAIMER

These particulars are given in good faith as supplied but cannot be guaranteed.



# RO/PAX LAND CRAFT FERRY 58

## GENERAL

Model	RO/PAX LAND CRAFT FERRY 58
Type	motor yacht
LOA (m)	58,00
LWL (m)	56,40
Beam (m)	11,68
Draft (m)	2,30
Year built	1979
Country	Greece
Gross tonnage	456,31
Net tonnage	113,99
Hull material	steel
Hull colour	white
Superstructure material	steel
Deck material	steel
Deck finish	non-skid paint
Superstructure deck finish	non-skid paint
Antifouling (year)	2024
Fuel tank (litre)	45000 Annually cleaned
Freshwater tank (litre)	yes
Blackwater tank (litre)	yes
Wheel steering	yes
Extra info	Last shaft & prop extraction & service 29.02.2024
Extra info	GMDSS A1 INSB CLASS
Extra info	PAX Capacity: 550, CARS: 52

## MACHINERY

No of engines	2
Make	CATERPILLAR
Type	3412
HP	317



# RO/PAX LAND CRAFT FERRY 58

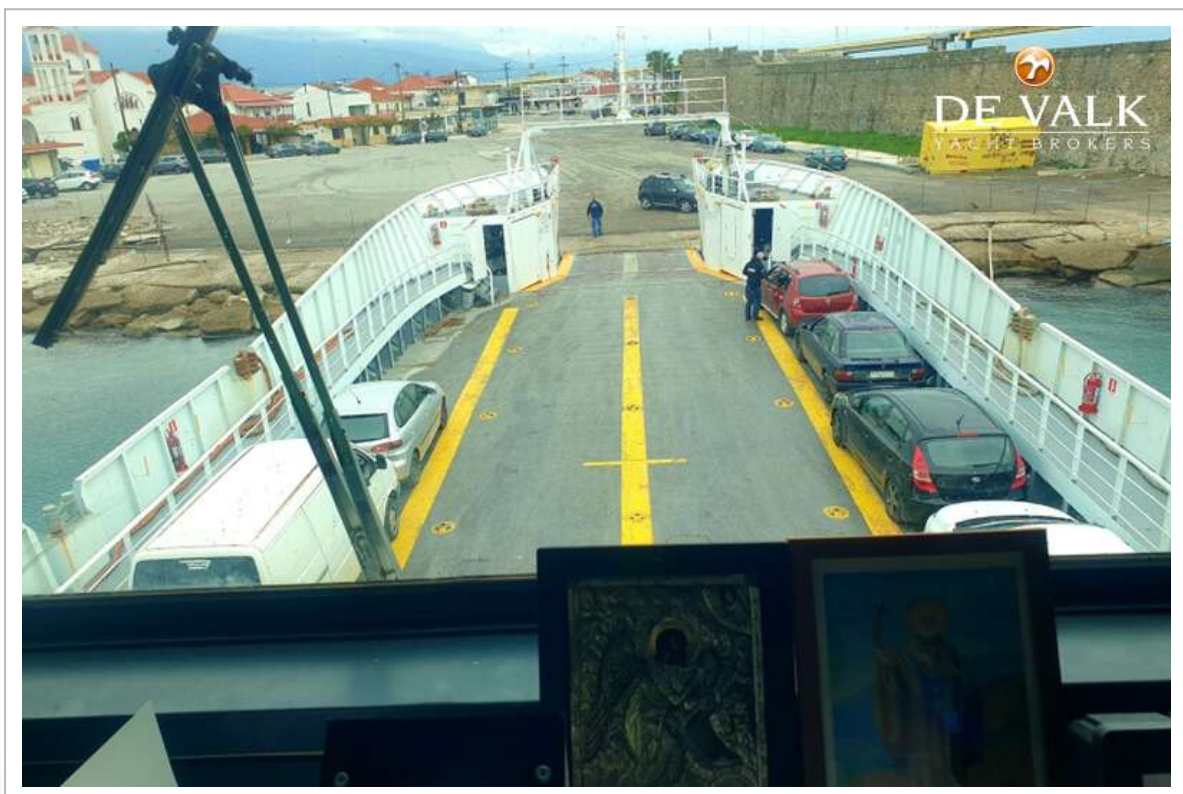
kW	233.31
Fuel	diesel
Year installed	2025
Maximum speed (kn)	11
Cruising speed (kn)	9
Consumption (l/hr)	25
Drive	shaft



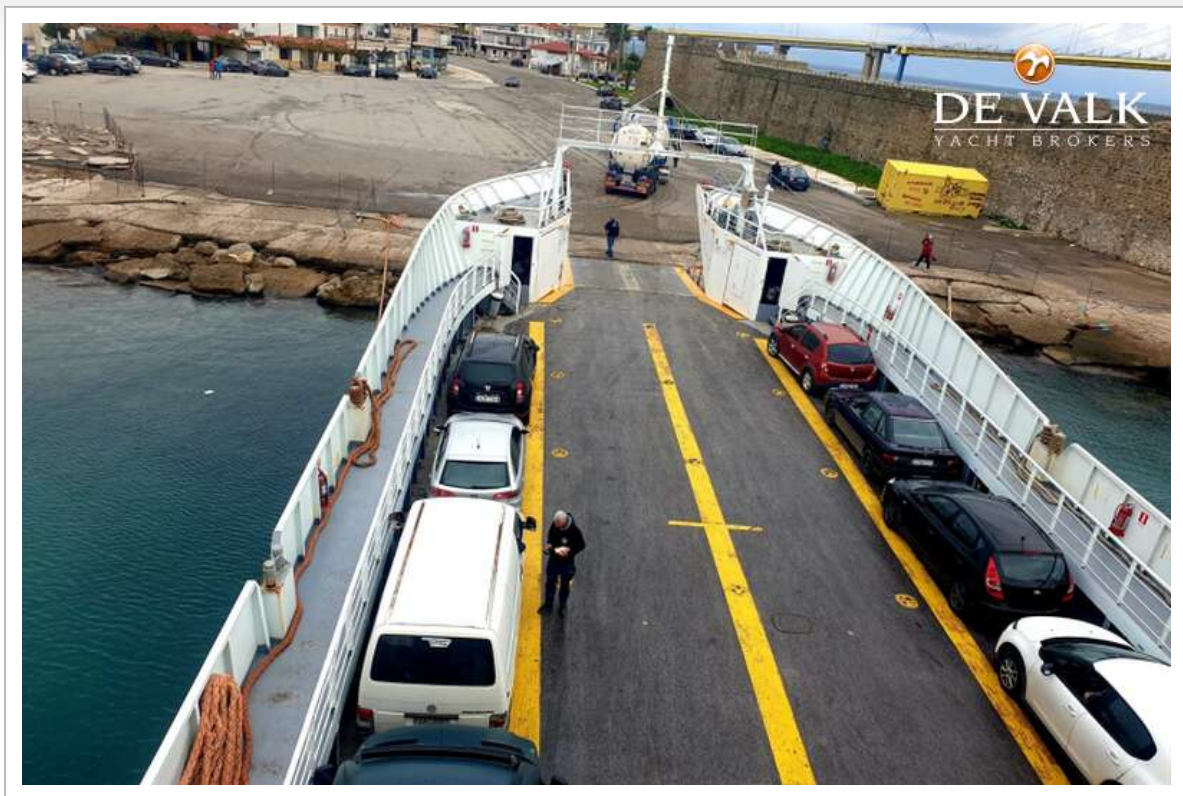
## RO/PAX LAND CRAFT FERRY 58





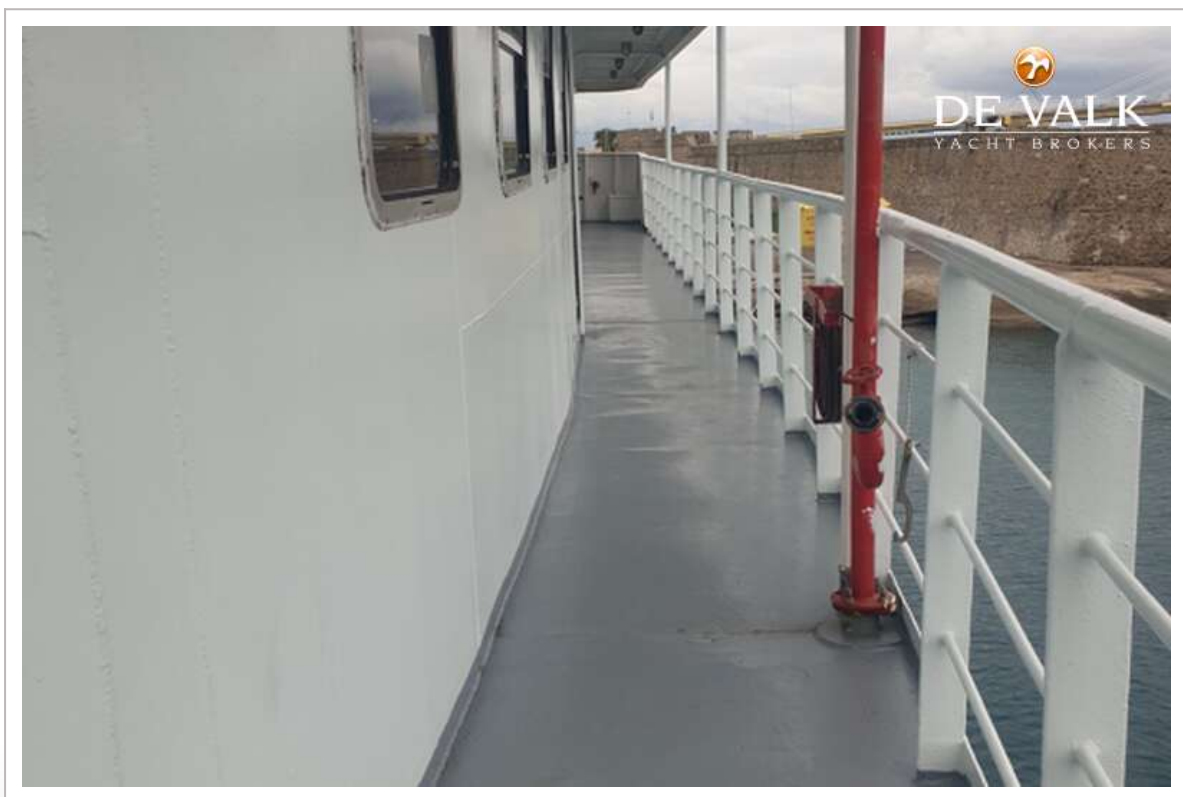


## RO/PAX LAND CRAFT FERRY 58





## RO/PAX LAND CRAFT FERRY 58





## RO/PAX LAND CRAFT FERRY 58

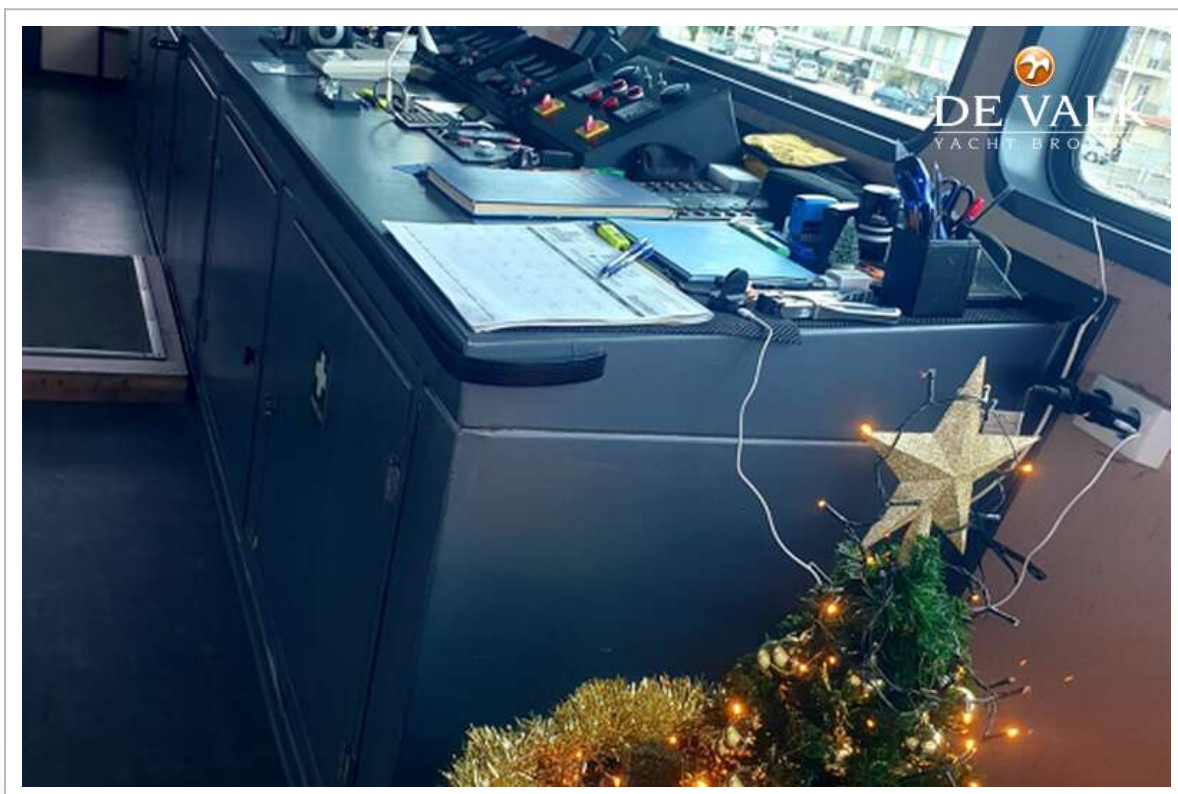
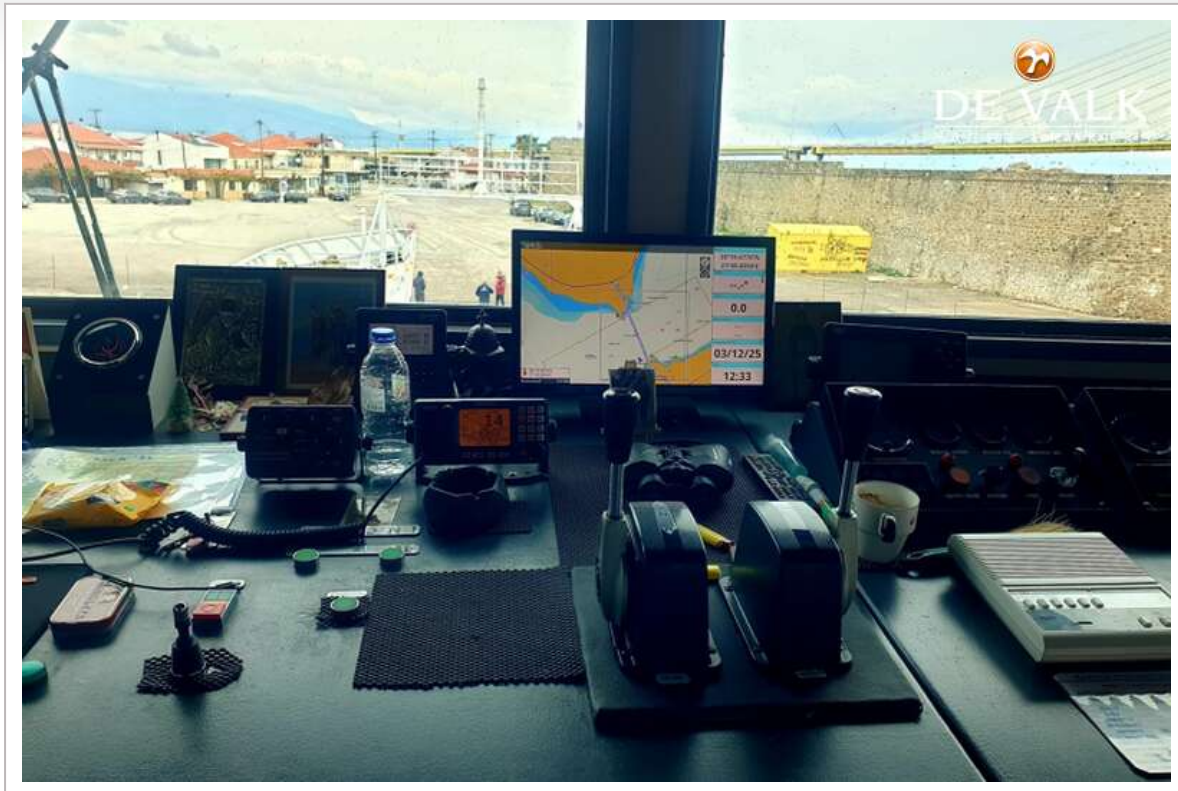


## RO/PAX LAND CRAFT FERRY 58

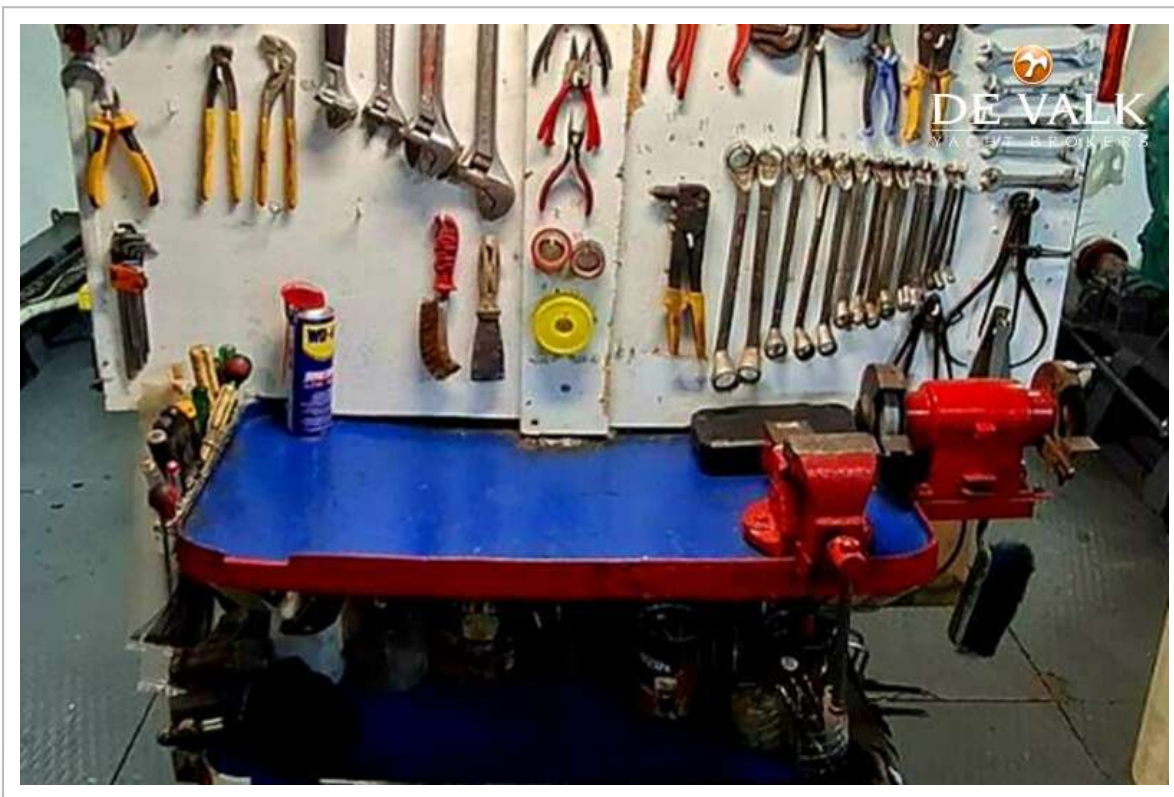
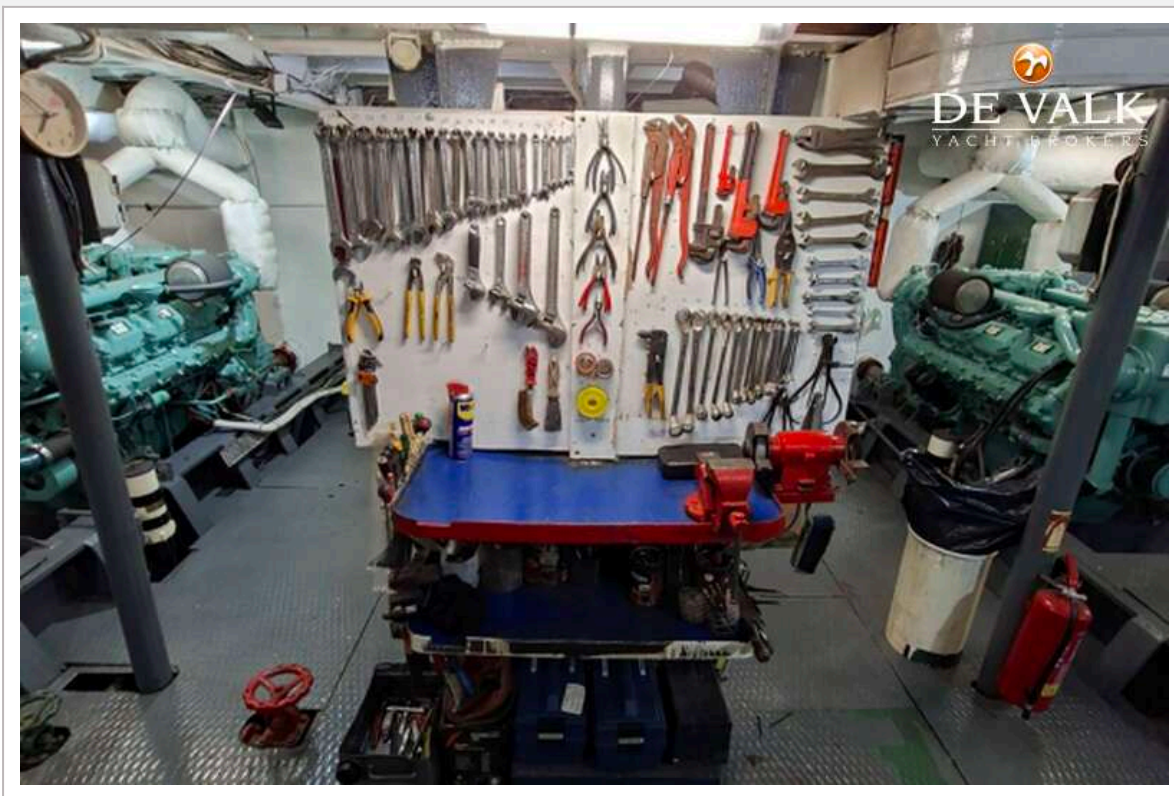




## RO/PAX LAND CRAFT FERRY 58

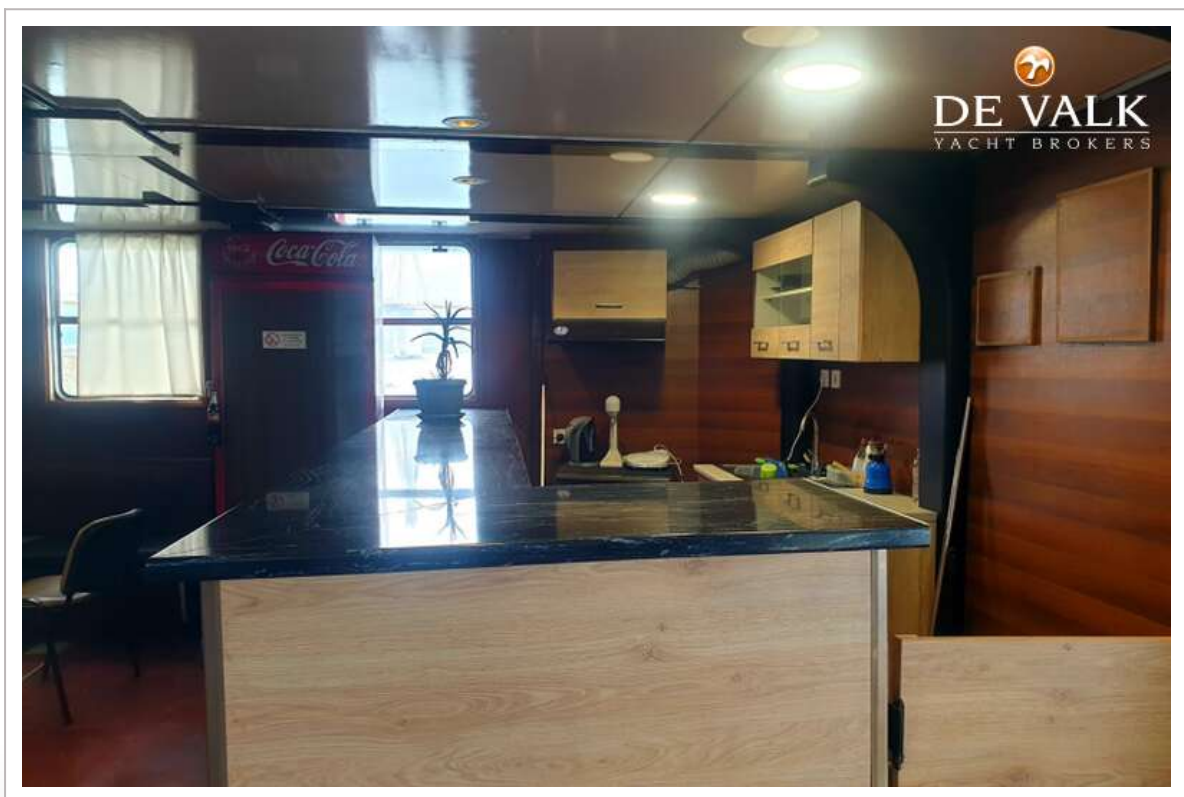
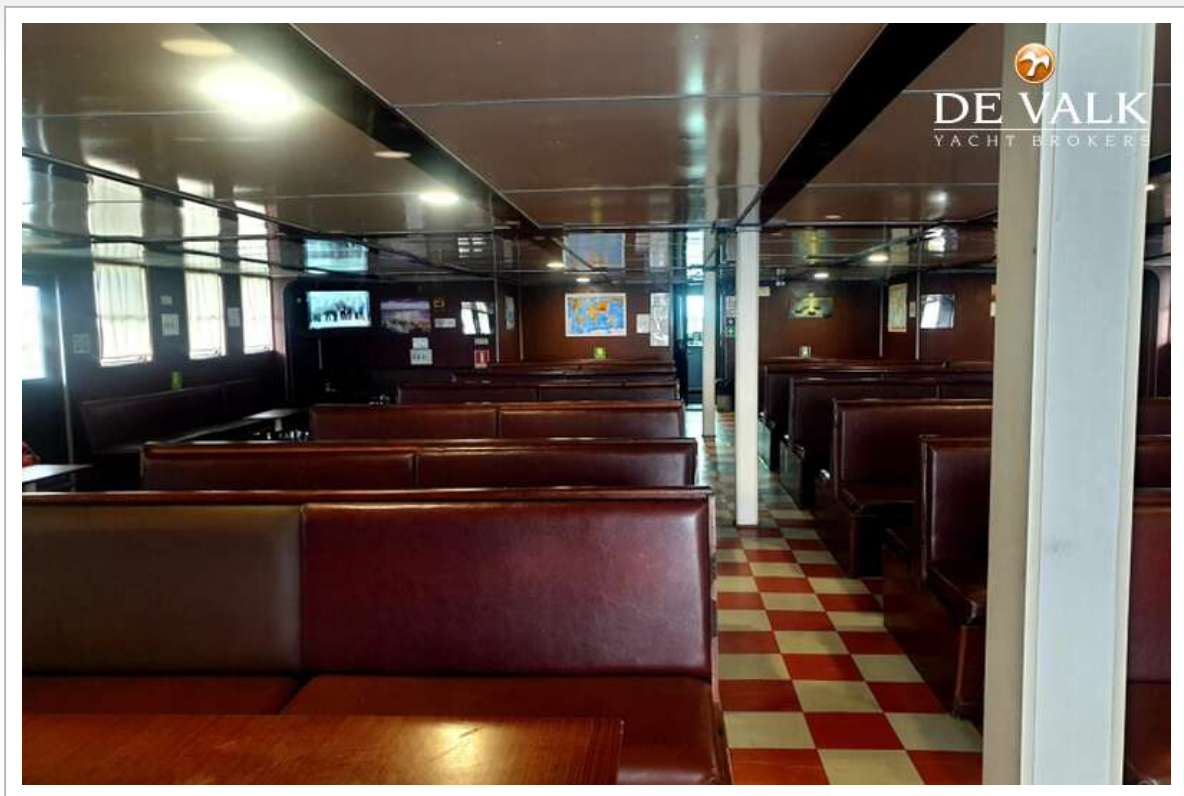


## RO/PAX LAND CRAFT FERRY 58





## RO/PAX LAND CRAFT FERRY 58



## RO/PAX LAND CRAFT FERRY 58





