



AZIMUT 50


DE VALK
YACHT BROKERS

BROKER'S COMMENTS

she is the perfect yacht for cruising in style and comfort. Measuring 15.24 metres in length, she boasts a contemporary design with sleek lines and a striking profile. Her expansive flybridge is an exceptional feature, providing ample space for entertaining guests and enjoying stunning views of the surrounding views.

Francis James Holbourne

SPECIFICATIONS

Dimensions	15.53 x 4.55 x 1.40 (m)	Builder	Azimut Yachts
Built	2006	Cabins	3
Material	GRP	Berths	
Engine(s)	2 x Caterpillar C12 diesel	Hp/Kw	2 x 670.00 (hp), 493.12 (kw)
Asking price	€ 349.000 (VAT Paid)	Lying	

CONTACT

Sales office	De Valk Costa del Sol	Telephone	+34 951120059
Address	Southern Spain Region 29660 Malaga ES	E-mail	costadelsol@devalk.nl

DISCLAIMER

These particulars are given in good faith as supplied but cannot be guaranteed.



GENERAL

Model	AZIMUT 50
Type	motor yacht
LOA (m)	15,53
Beam (m)	4,55
Draft (m)	1,40
Year built	2006
Builder	Azimut Yachts
Country	Spain
Designer	Stefano Righini
Displacement (t)	49
CE norm	B
Hull material	GRP
Superstructure material	GRP
Cockpit deck finish	teak
Fuel tank (litre)	stainless steel 2200
Freshwater tank (litre)	epoxy 500
Blackwater tank extraction	pump
Wheel steering	hydraulic
Flybridge helm position	hydraulic

ACCOMMODATION

Cabins	3
Interior	walnut
Floor	carpet
Pilot house	yes
Saloon	yes
Sliding roof	manual
Air-conditioning	reverse cycle airco
Sliding door to cockpit	yes
Galley	yes



Cooker	electric
Oven	yes
Extractor	yes
Microwave	yes
Fridge	yes
Freezer	yes
Hot water system	220V
Water pressure system	electrical
Dishwasher	yes
Crockery	yes
Owners cabin	double bed
Wardrobe	hanging/drawers/shelves
Bathroom	en suite
Toilet	en suite
Toilet system	electric
Shower	en suite
Extra info	Double bed with mirrored headboard and opening bedside tables Slide-away reading lights Vanity unit with mirror, upper light and fold-down writing surface with internal leather finish Porthole and deck hatch overhead Optional TV cabinet Diffused light under bed Overhead lights Wardrobe with shelves, hangers and swivelling mirror, lined in cedar- wood Chest of drawers with shelves above lined in cedar- wood 2 large drawers under bed. Carpet and curtains
Guest cabin 1	double bed
Wardrobe	hanging and shelves
Bathroom	shared
Toilet	shared
Toilet system	electric
Shower	shared



Extra info

VIP cabin (amidship) Double bed with mirrored headboard, bedside tables Wardrobe with hangers, lined in cedar wood Wardrobe with shelves, swivelling mirror, lined in cedar-wood Large drawer under bed Drawers under galley floor Porthole Reading lights Ceiling lights Diffused light under bed Carpet and curtains

Guest cabin 2

bunk bed

Wardrobe

hanging and shelves

Extra info

Guest cabin(third cabin optional) 2 bunk beds Reading lights Wardrobe with shelves, lined in cedar- wood Porthole Carpet and curtains Crew cabin (optional) Access from cockpit bench Single bed 3 lockers under bed Ceiling lights Wardrobe W.C. Round washbasin Shower with curtain Non-slip floor

Flybridge

yes

Wet bar

yes

MACHINERY

No of engines

2

Make

Caterpillar

Type

C12

HP

670

kW

493.12

Fuel

diesel

Maximum speed (kn)

32

Cruising speed (kn)

26

Range (nm)

280

Drive

V-drive

Engine controls

electrical

Bowthruster

electric

Sternthruster

electric

Gearbox

hydraulic

Exhaust

watercooled

Shaft lubrication

water



Electric bilge pump	yes
Bilge alarm	yes
Generator	yes
Start battery	yes
Service battery	yes
Generator battery	yes
Battery charger/inverter	yes
Shorepower	with cable

NAVIGATION

Compass	yes
Compass on flybridge	yes
Depth sounder/log	yes
Repeater	yes
VHF	yes
Autopilot	yes
Radar	yes
GPS	yes
Plotter	yes

EQUIPMENT

Cockpit cover	yes
Bimini	yes
Cockpit cushions	yes
Bathing platform	yes
Transom door	yes
Gangway	yes
Deck shower	yes
Windlass	electrical
Capstan	yes
TV	yes



TV receiver	yes
Radio-cd player	yes
Cockpit speakers	yes
Speakers in salon	yes
Speakers in cabin	yes



AZIMUT 50



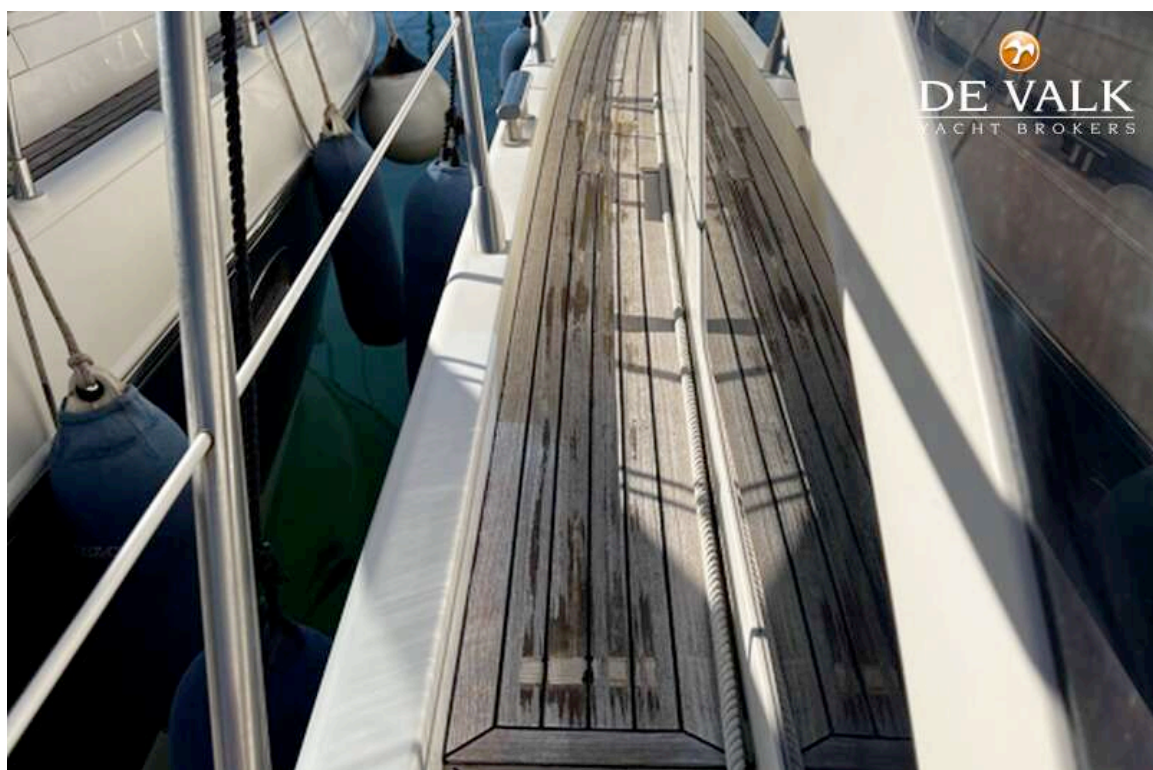
AZIMUT 50



AZIMUT 50



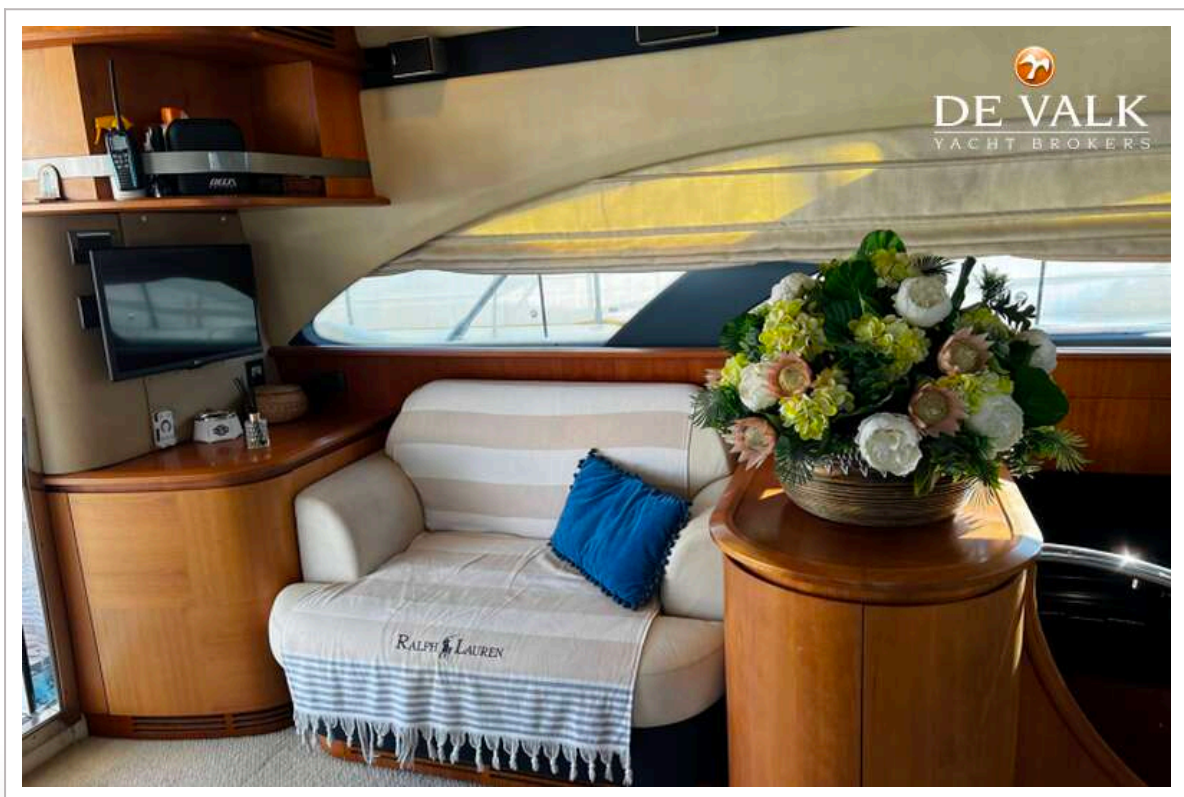
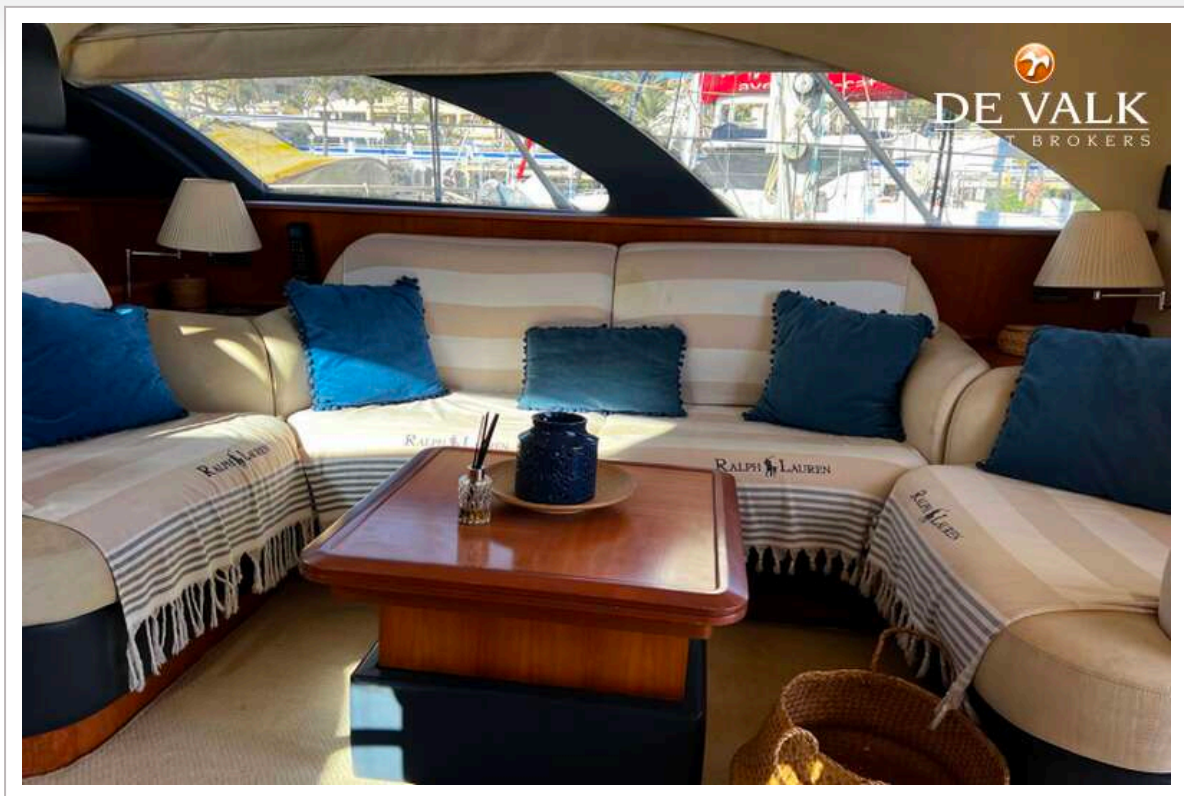
AZIMUT 50

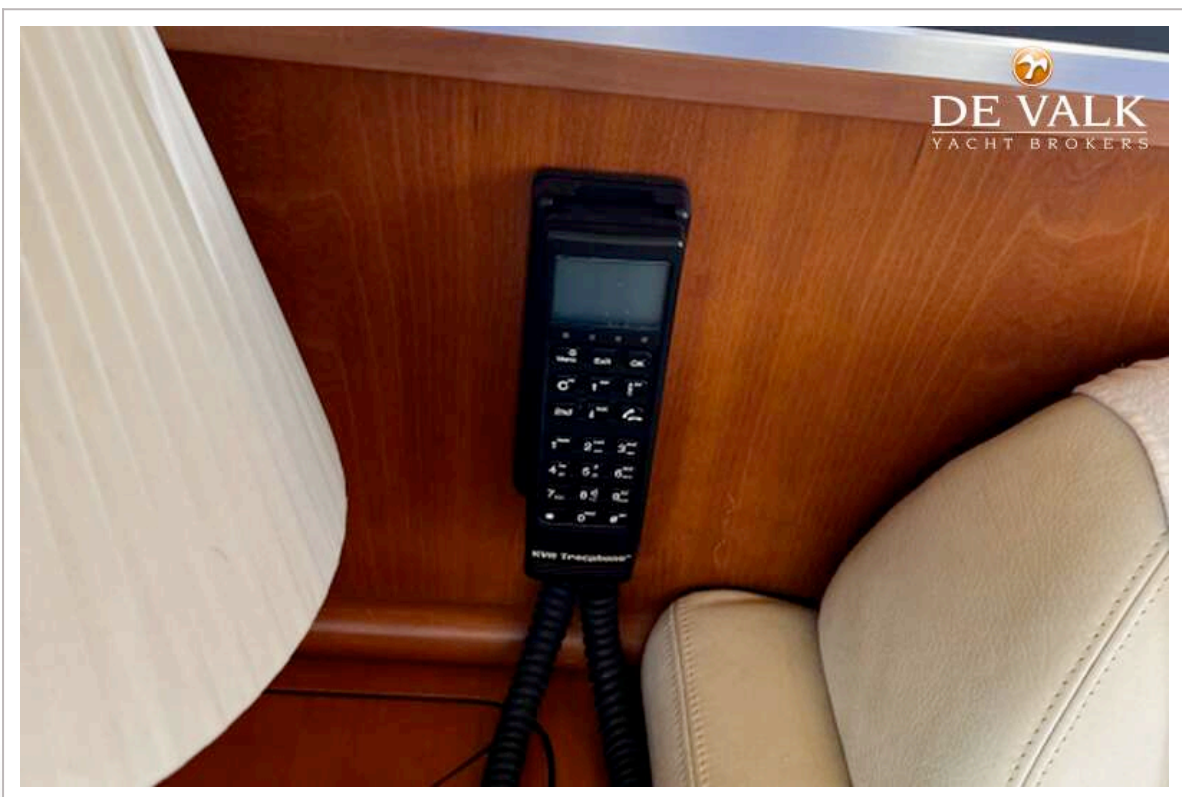
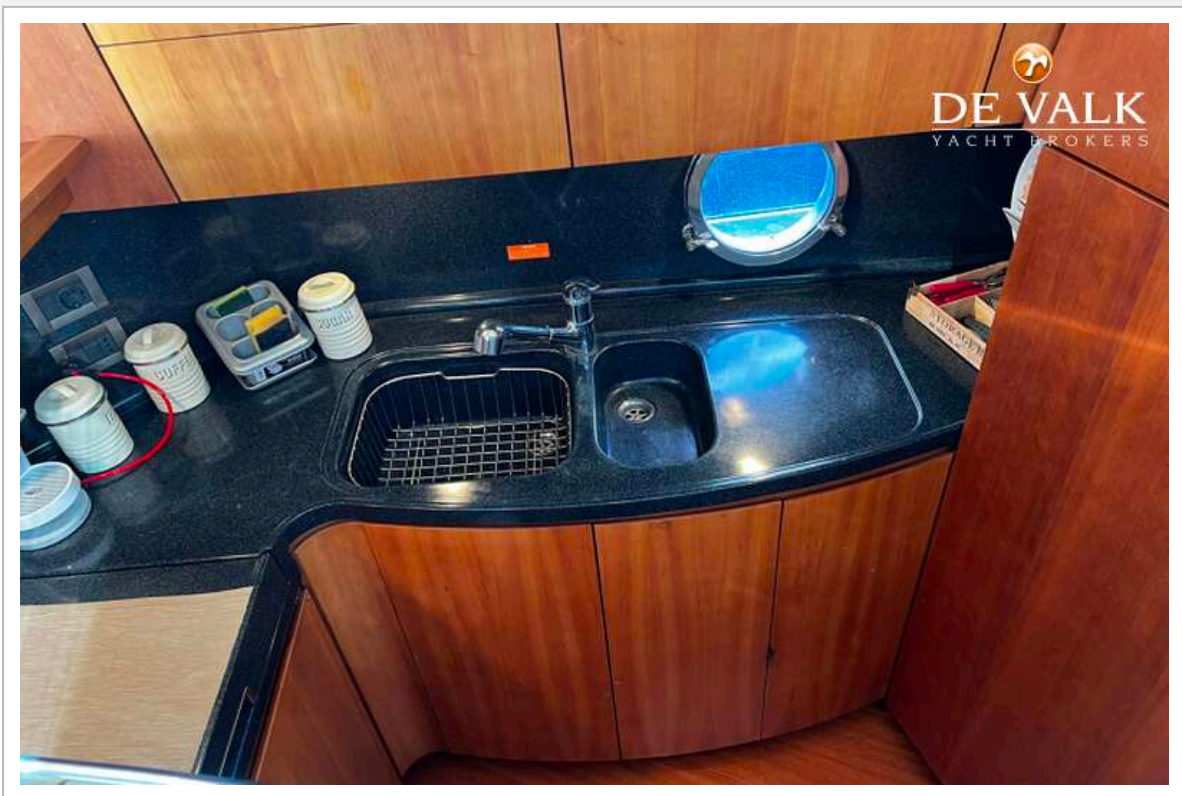


AZIMUT 50

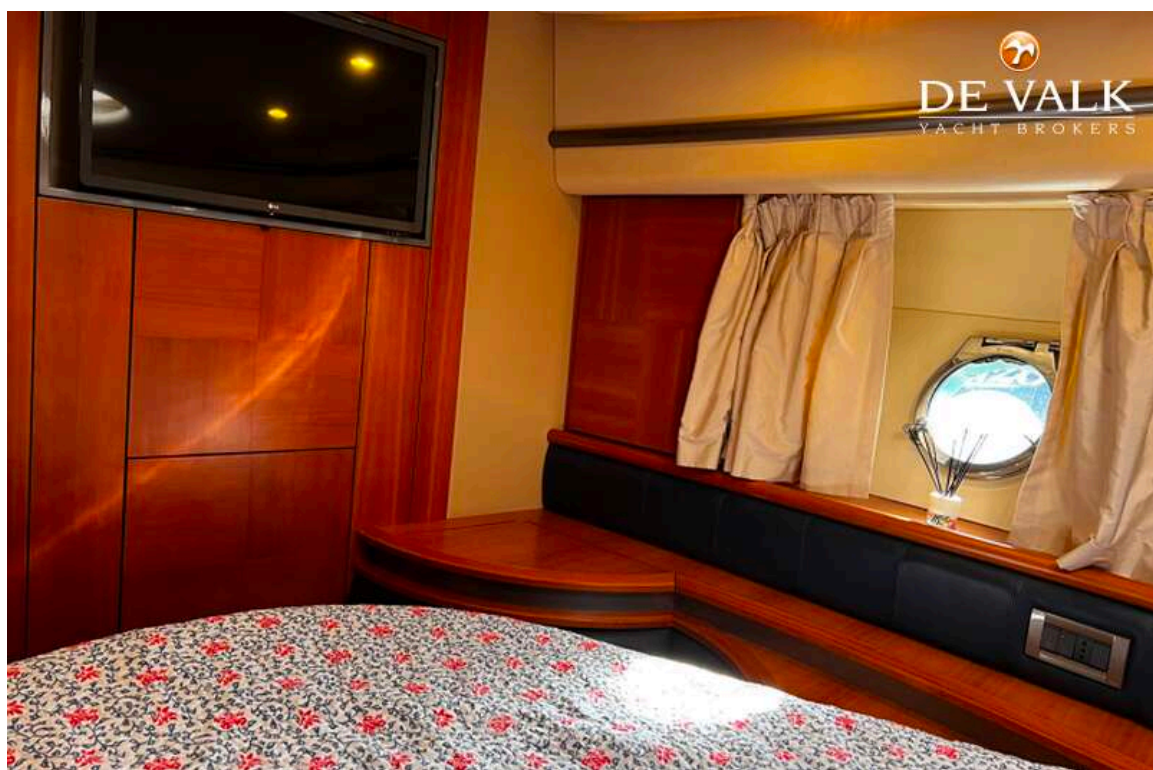
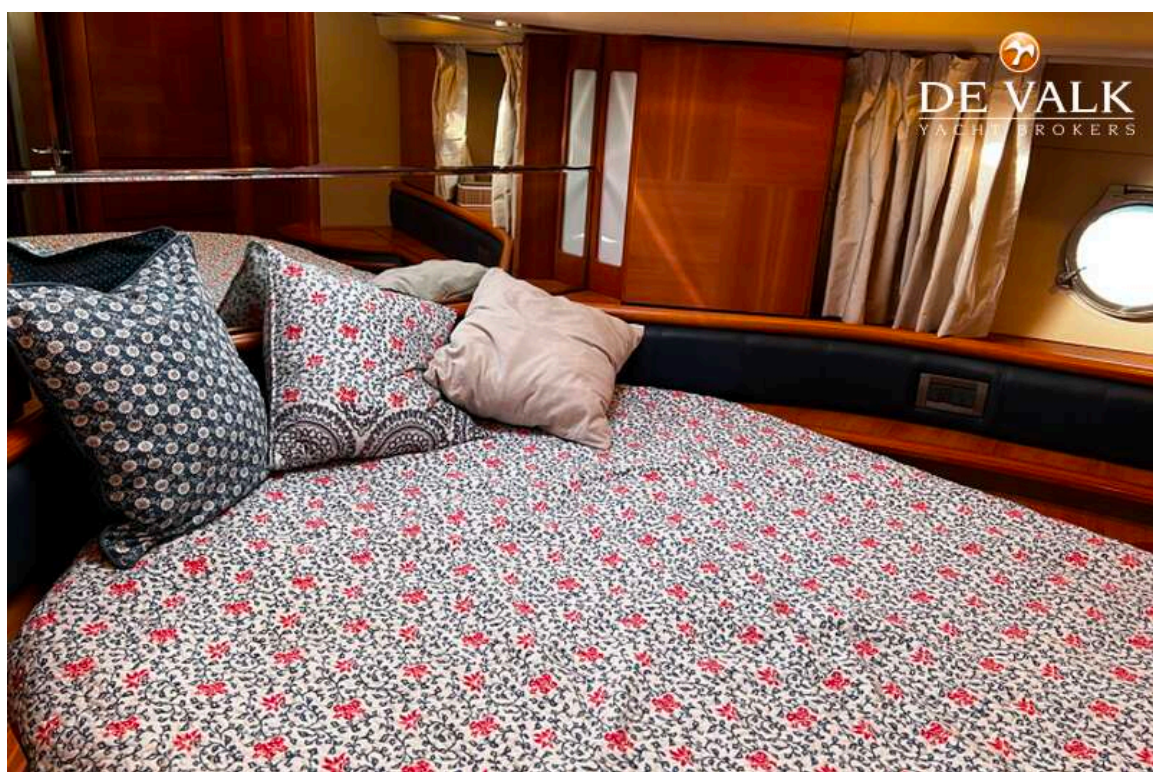


AZIMUT 50

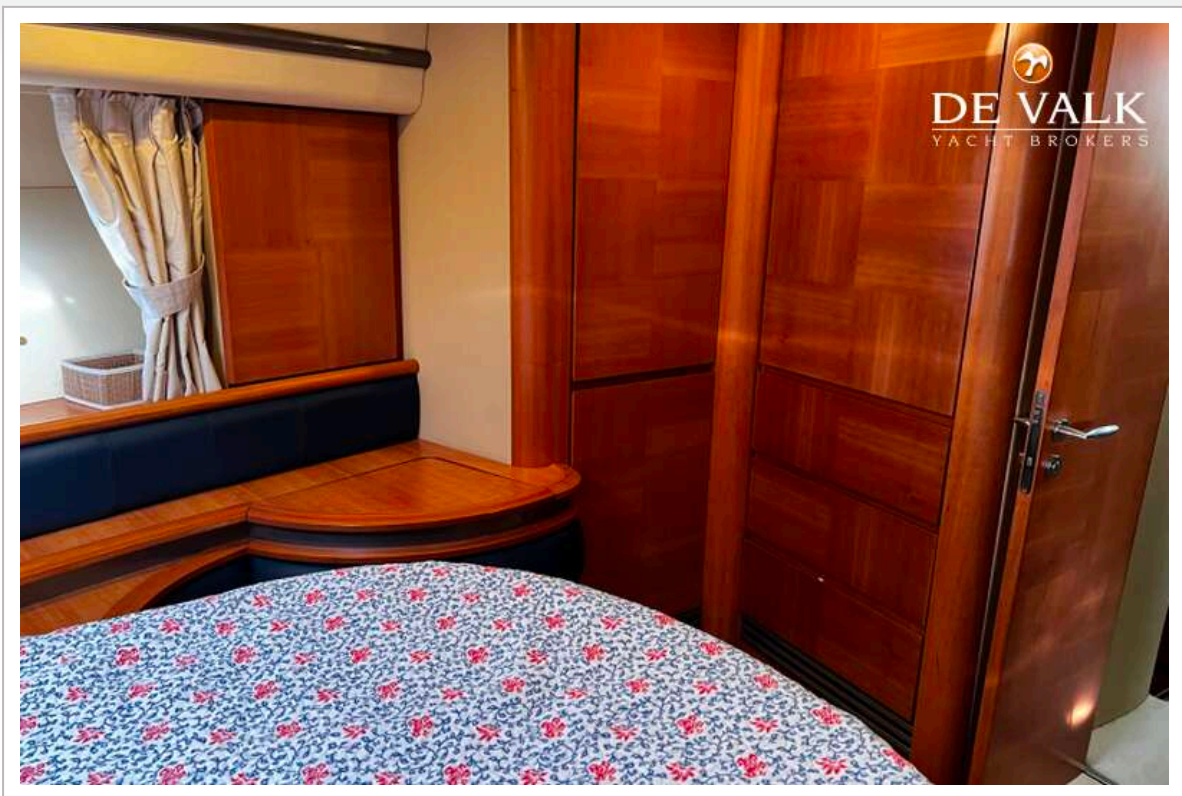








AZIMUT 50



AZIMUT 50



