



DE VALK  
YACHT BROKERS



MOODY 336



DE VALK  
YACHT BROKERS

## BROKER'S COMMENTS

The Moody 336 is a well-built and highly regarded cruising yacht, known for its solid construction and excellent offshore capabilities. The Moody 336 offers a safe and comfortable sailing experience, with a spacious cockpit and easy handling that inspires confidence in varying conditions. Below deck, it features a practical and welcoming interior with good natural light and well-designed accommodation for extended cruising. Combining durability, comfort, and classic design, the Moody 336 remains a popular choice for sailors seeking a reliable and capable family cruiser.

*Johan Schootstra*

## SPECIFICATIONS

<b>Dimensions</b>	10.19 x 3.54 x 1.68 (m)	<b>Builder</b>	Marine Projects Ltd.
<b>Built</b>	1990	<b>Cabins</b>	2
<b>Material</b>	GRP	<b>Berths</b>	5
<b>Engine(s)</b>	1 x Volvo Penta 2003 diesel	<b>Hp/Kw</b>	28.00 (hp), 20.61 (kw)
<b>Asking price</b>	€ 59.000 (VAT Paid)	<b>Lying</b>	at sales office

## CONTACT

<b>Sales office</b>	De Valk Hindeloopen B.V.	<b>Telephone</b>	+31 514 52 40 00
<b>Address</b>	Oosterstrand 1 8713 JS Hindeloopen NL	<b>E-mail</b>	hindeloopen@devalk.nl

## DISCLAIMER

These particulars are given in good faith as supplied but cannot be guaranteed.



## GENERAL

<b>Model</b>	MOODY 336
<b>Type</b>	sailing yacht
<b>LOA (m)</b>	10,19
<b>LWL (m)</b>	8,74
<b>Beam (m)</b>	3,54
<b>Draft (m)</b>	1,68
<b>Air draft (m)</b>	13,00
<b>Headroom (m)</b>	1,82
<b>Year built</b>	1990
<b>Builder</b>	Marine Projects Ltd.
<b>Country</b>	United Kingdom
<b>Designer</b>	Bill Dixon
<b>Displacement (t)</b>	5,7
<b>Ballast (tonnes)</b>	yes
<b>Gross tonnage</b>	1,8
<b>CE norm</b>	NA
<b>Hull material</b>	GRP
<b>Hull colour</b>	white
<b>Hull shape</b>	round-bilged
<b>Keel type</b>	fin keel
<b>Superstructure material</b>	GRP
<b>Rubbing strake</b>	Teak with brass strip
<b>Deck material</b>	GRP
<b>Deck finish</b>	teak
<b>Superstructure deck finish</b>	non-skid moulded in
<b>Cockpit deck finish</b>	teak
<b>Antifouling (year)</b>	2026
<b>Window frame</b>	aluminium
<b>Window material</b>	polycarbonate
<b>Deckhatch</b>	4x



<b>Fuel tank (litre)</b>	stainless steel   90 ltr.
<b>Level indicator (fuel tank)</b>	yes
<b>Freshwater tank (litre)</b>	polyethylene   200 ltr.
<b>Level indicator (freshwater)</b>	yes
<b>Blackwater tank (litre)</b>	stainless steel   90 ltr.
<b>Level indicator (blackwater)</b>	yes
<b>Blackwater tank extraction</b>	deck extraction + uw line
<b>Wheel steering</b>	mechanical
<b>Emergency tiller</b>	yes

## ACCOMMODATION

<b>Cabins</b>	2
<b>Berths</b>	5
<b>Interior</b>	teak
<b>Layout</b>	Spacious 2-cabin layout with a generous aft cabin, comfortable saloon, L-shaped galley, chart table and forward cabin. Ample headroom and storage make the Moody 336 an excellent family cruiser
<b>Floor</b>	teak and holly
<b>Saloon</b>	yes
<b>Headroom saloon (m)</b>	1,80 mtr.
<b>Heating</b>	diesel ducted hot air   Eberspächer
<b>Navigation center</b>	yes
<b>Chart table</b>	yes
<b>Aft Cabin</b>	Owners cabin
<b>Convertible berth</b>	in saloon
<b>Galley</b>	L-Shaped
<b>Countertop</b>	Duropol
<b>Sink</b>	stainless steel   double
<b>Cooker</b>	calor gas   Plastimo Pacific   2 burner
<b>Oven</b>	In cooker
<b>Fridge</b>	yes



Hot water system	220V + engine
Water pressure system	electrical
Owners cabin	double bed   Aft cabin
Bed length (m)	2 mtr.
Wardrobe	hanging and shelves
Guest cabin 1	v-bed   forward cabin
Bed length (m)	2 mtr.
Wardrobe	drawers and shelves
Toilet	Jabsco
Toilet system	manual
Wash basin	yes
Shower	Niet aangesloten
Extra info	Truma gas remote shut-off switch

## MACHINERY

No of engines	1
Make	Volvo Penta
Type	2003
HP	28
kW	20.61
Fuel	diesel
Maximum speed (kn)	6,5
Cruising speed (kn)	5,5
Engine cooling system	freshwater heat exchanger
Drive	shaft
Shaft seal	yes
Engine controls	bowden cable
Gearbox	mechanical
Exhaust	watercooled
Propeller type	yes
Propeller blades	2



<b>Propeller shaft material</b>	stainless steel
<b>Shaft lubrication</b>	water
<b>Manual bilge pump</b>	yes
<b>Electrical installation</b>	12 / 220 volt
<b>Start battery</b>	Vetus Marine 12v - 70Ah
<b>Service battery</b>	Vetus Marine 12v - 110Ah
<b>Battery monitor</b>	Phoenix Charger Control
<b>Shorepower</b>	with cable

## NAVIGATION

<b>Compass</b>	Plastimo Olympic 100
<b>Multi control display</b>	2x Raymarine i70   new 2017
<b>Windset</b>	Raymarine i60 - Wind   new 2017
<b>VHF</b>	Navman VHF 7200
<b>Autopilot</b>	Autohelm ST4000
<b>GPS</b>	Garmin 152
<b>Navigation lights</b>	yes

## EQUIPMENT

<b>Sprayhood with grab rail</b>	yes
<b>Cockpit table</b>	yes
<b>Bathing platform</b>	yes
<b>Boarding ladder</b>	yes
<b>Anchor</b>	CQR Plough
<b>Anchor chain</b>	yes
<b>Grab rail (superstructure)</b>	teak
<b>Pushpit</b>	yes
<b>Pulpit</b>	yes

## RIGGING



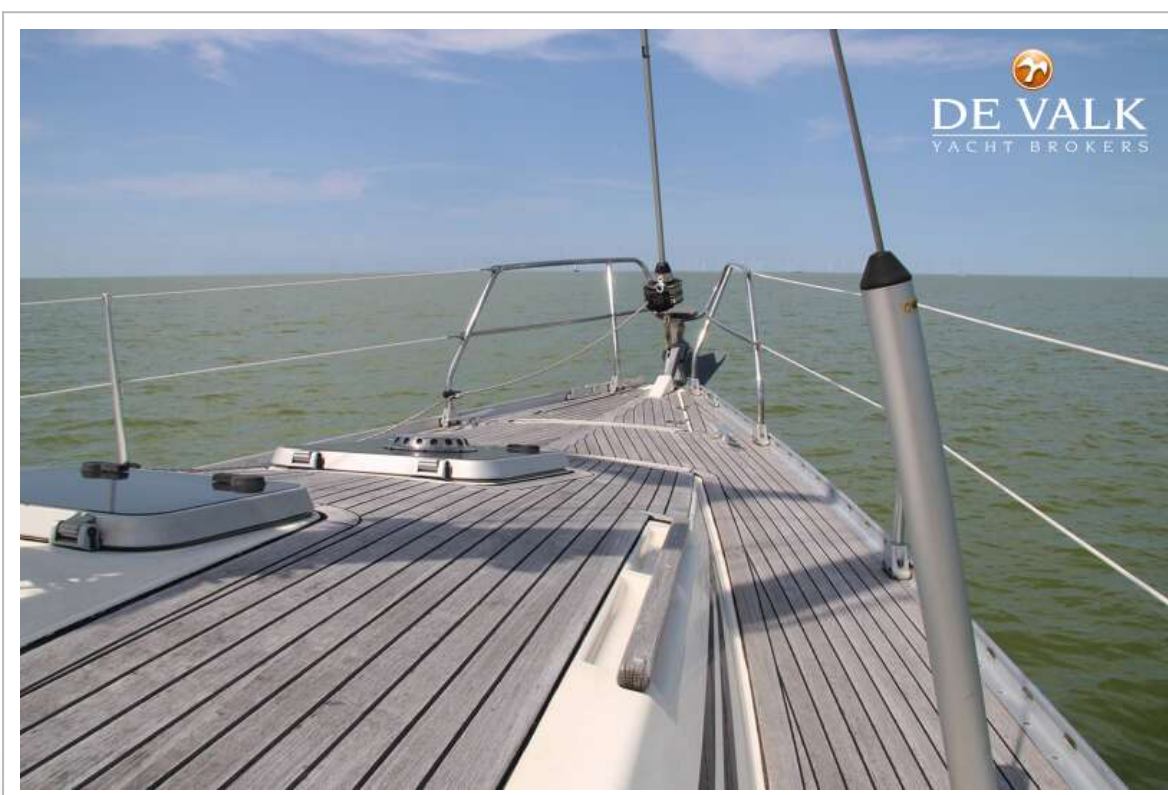
<b>Rigging</b>	sloop
<b>Standing rigging</b>	wire
<b>Brand mast</b>	Kemp
<b>Material mast</b>	aluminium
<b>Spreaders</b>	2 pair
<b>Mainsail</b>	1 seizoen gevaren   2017
<b>Mainsail cover</b>	yes
<b>Battcars</b>	yes
<b>Fully battened mainsail</b>	yes
<b>Genoa</b>	1 seizoen gebruikt   2018
<b>Genoa furler</b>	Furlex 200S
<b>Genoa cover</b>	yes
<b>Boomvang</b>	tackle
<b>Primary sheet winch</b>	2x Lewmar 6 single speed
<b>Genoa sheetwinches</b>	2x Lewmar 42
<b>Halyard winches</b>	2x Lewmar 8



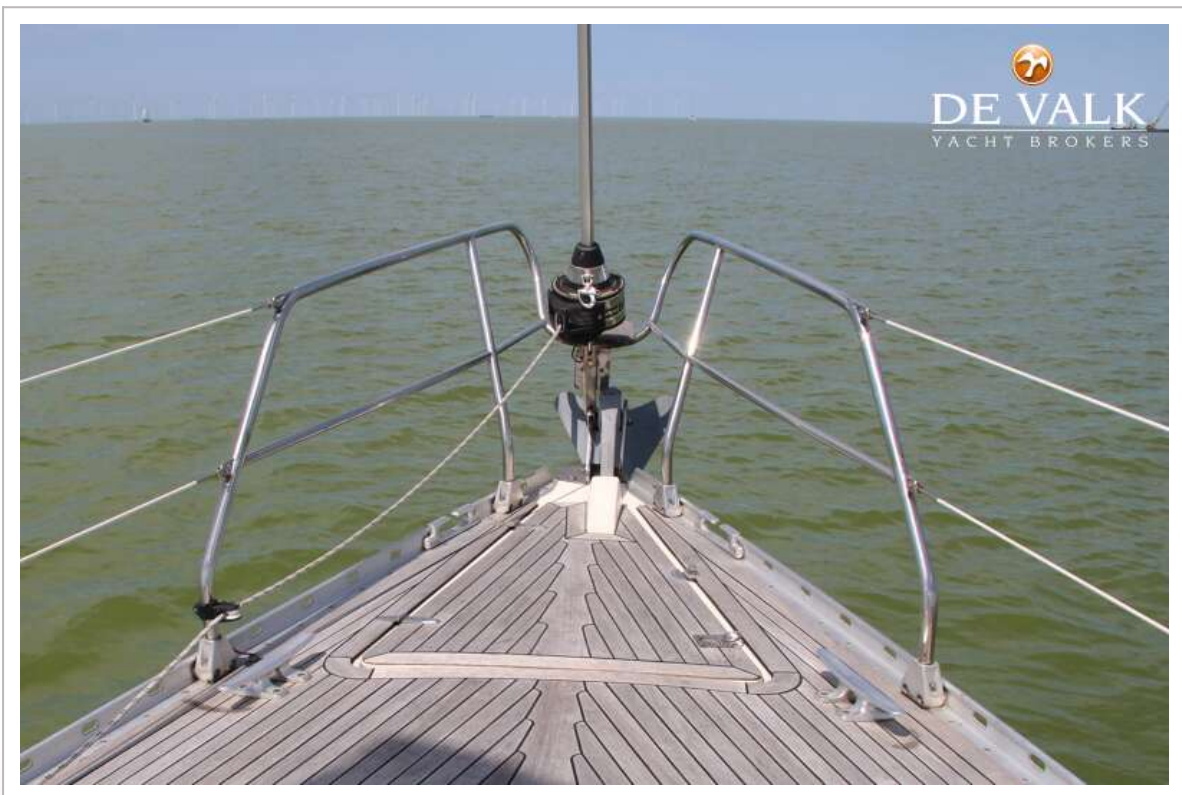
# MOODY 336



# MOODY 336



# MOODY 336



# MOODY 336



# MOODY 336



# MOODY 336



# MOODY 336



# MOODY 336



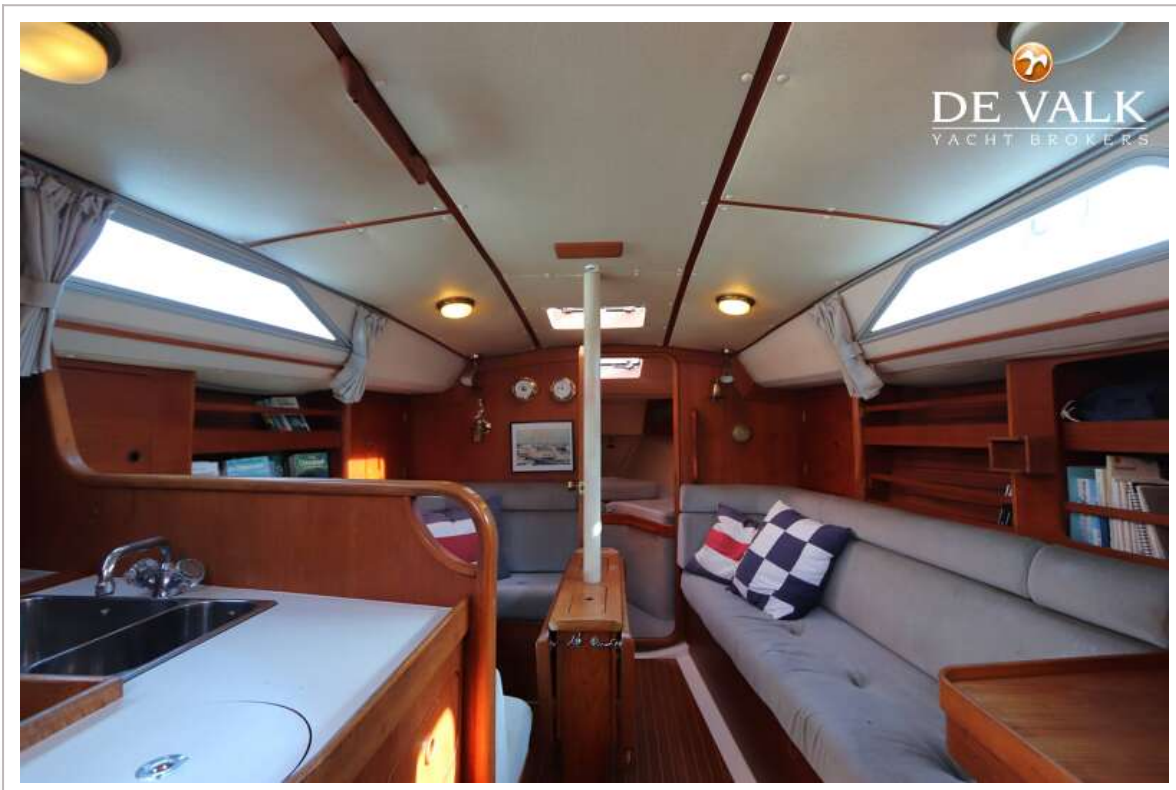
# MOODY 336



# MOODY 336



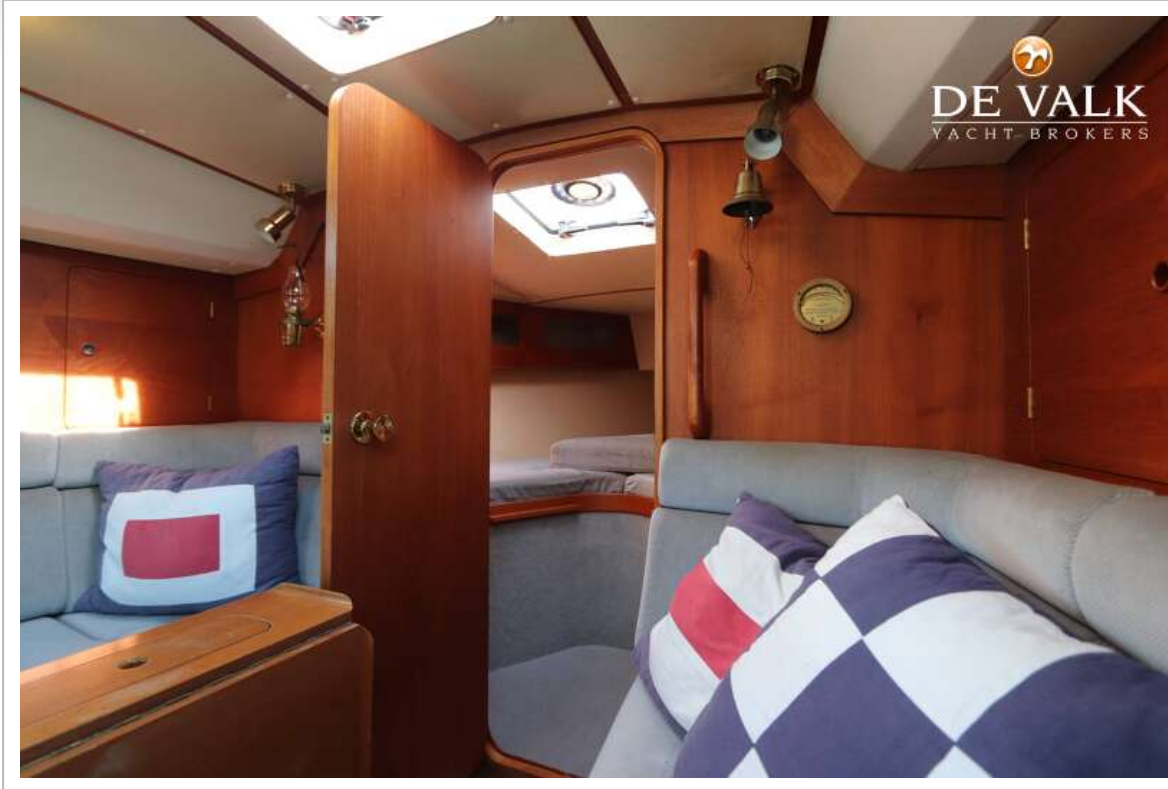
# MOODY 336



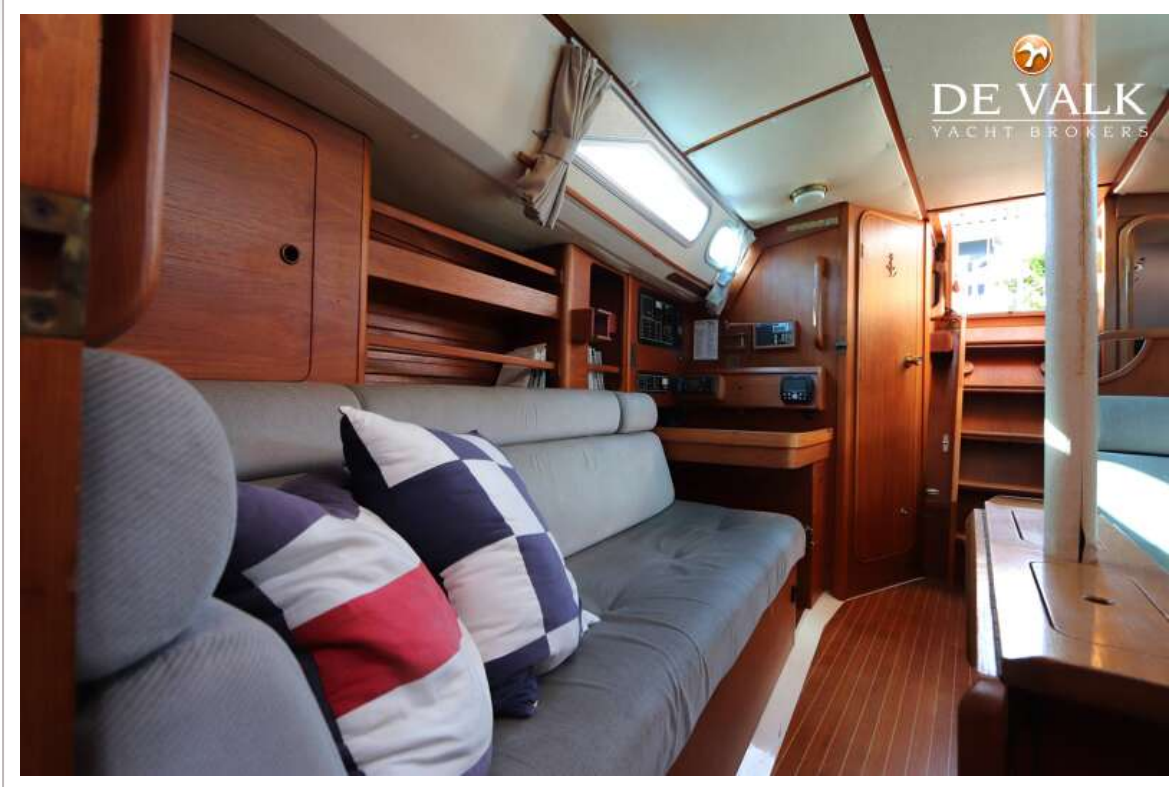
# MOODY 336



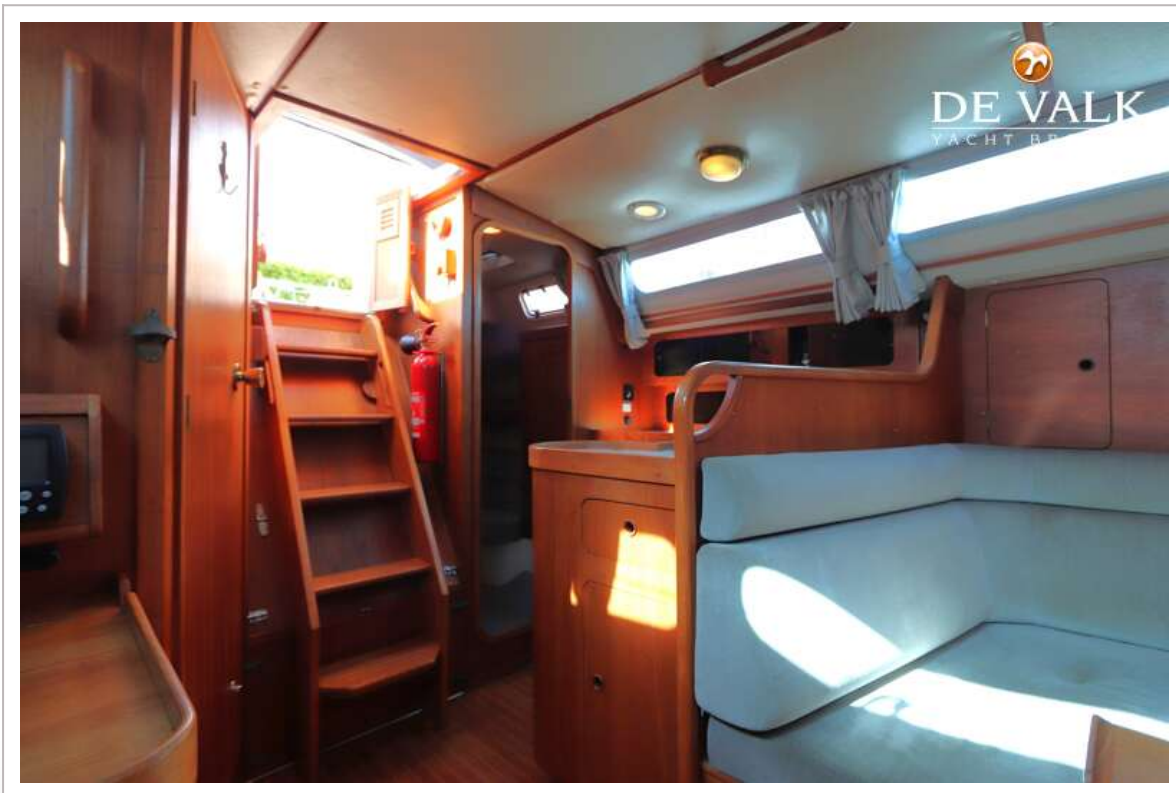
# MOODY 336



# MOODY 336



# MOODY 336



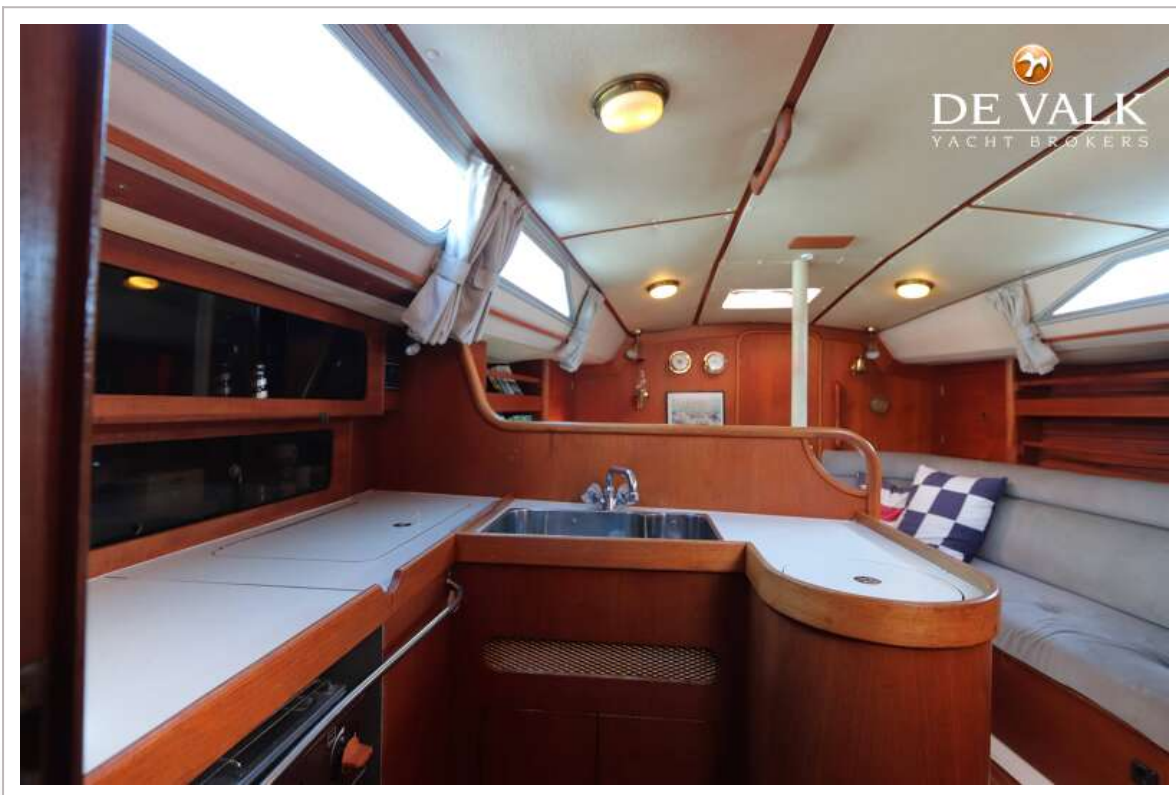
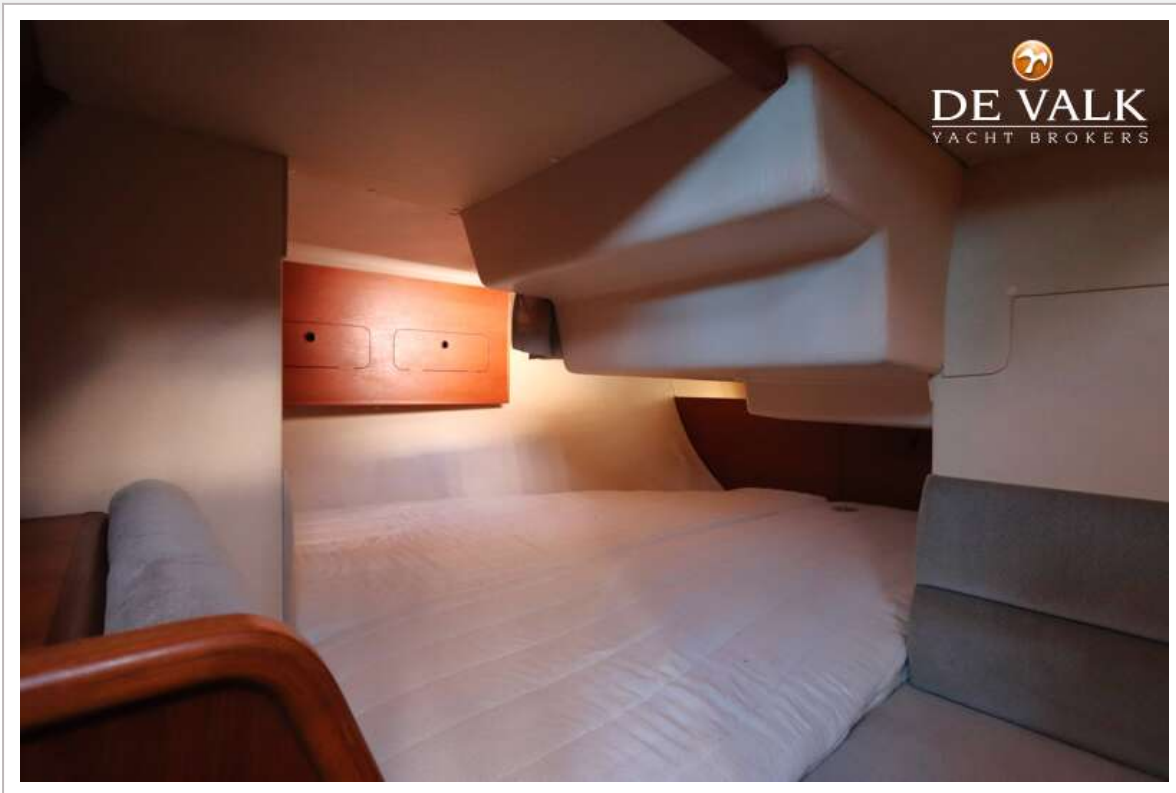
# MOODY 336



# MOODY 336



# MOODY 336



# MOODY 336



  
**DE VALK**  
YACHT BROKERS

