



DE VALK  
YACHT BROKERS



Catalogue Picture / Sistership

NAUTICAT 43



DE VALK  
YACHT BROKERS

# NAUTICAT 43

## BROKER'S COMMENTS

The Nauticat 43 is build from legendary finnish quality. Her well sailing lines were drawn by Sparkman & Stephens. This is guarantee for excellent seaworthiness and sailing joy. ASGARD offers a lot of potential and is a solid platform for new ideas of the long term sailor or even liveaboard. Have a look, if this is you step into the Nauticat-World!

*Jürgen Jacobs*

## SPECIFICATIONS

<b>Dimensions</b>	13.00 x 4.20 x 1.90 (m)	<b>Builder</b>	Siltala Yachts OY
<b>Built</b>	1986	<b>Cabins</b>	2
<b>Material</b>	GRP	<b>Berths</b>	6
<b>Engine(s)</b>	1 x Ford Lehman FL135 diesel	<b>Hp/Kw</b>	135.00 (hp), 99.36 (kw)
<b>Asking price</b>	€ 115.000 (VAT Paid)	<b>Lying</b>	contact Hamburg

## CONTACT

<b>Sales office</b>	De Valk Hamburg	<b>Telephone</b>	+49 40 46 000 999
<b>Address</b>	Domstraße 11 20095 Hamburg DE	<b>E-mail</b>	hamburg@devalk.nl

## DISCLAIMER

These particulars are given in good faith as supplied but cannot be guaranteed.



## GENERAL

<b>Model</b>	NAUSICAT 43
<b>Type</b>	sailing yacht
<b>LOA (m)</b>	13,00
<b>LWL (m)</b>	10,00
<b>Beam (m)</b>	4,20
<b>Draft (m)</b>	1,90
<b>Air draft (m)</b>	19,90
<b>Year built</b>	1986
<b>Builder</b>	Siltala Yachts OY
<b>Country</b>	Finland
<b>Designer</b>	Sparkman & Stevens
<b>Displacement (t)</b>	15
<b>Ballast (tonnes)</b>	lead 4,3
<b>Hull material</b>	GRP
<b>Hull colour</b>	white
<b>Hull shape</b>	S-bilged
<b>Keel type</b>	fin keel
<b>Superstructure material</b>	GRP
<b>Deck material</b>	GRP
<b>Deck finish</b>	teak
<b>Cockpit deck finish</b>	teak
<b>Antifouling (year)</b>	2026
<b>Window frame</b>	aluminium
<b>Window material</b>	tempered glass
<b>Fuel tank (litre)</b>	stainless steel 1125L
<b>Level indicator (fuel tank)</b>	yes
<b>Freshwater tank (litre)</b>	stainless steel 750L
<b>Level indicator (freshwater)</b>	yes
<b>Blackwater tank (litre)</b>	stainless steel 150L
<b>Wheel steering</b>	hydraulic



Inside helm position	yes
Outside helm position	yes
Emergency tiller	yes

## ACCOMMODATION

Cabins	2
Berths	6
Interior	teak
Floor	teak and holly
Deck saloon	yes
Heating	diesel ducted hot air
Dinette	yes
Galley	yes
Countertop	Perspex Lamiat
Sink	stainless steel
Cooker	calor gas
Oven	yes
Fridge	yes
Freezer	yes
Hot water system	yes
Water pressure system	electrical Fresh + sea water
Owners cabin	yes
Bed length (m)	2m
Bathroom	yes
Toilet	separate
Toilet system	manual
Shower	yes
Guest cabin 1	yes
Bathroom	separate
Toilet	separate
Toilet system	manual



Shower	yes
Washing machine	yes

## MACHINERY

No of engines	1
Make	Ford Lehman
Type	FL135
HP	135
kW	99.36
Fuel	diesel
Maximum speed (kn)	9
Cruising speed (kn)	6
Range (nm)	1100
Engine hours	3455
Engine cooling system	freshwater heat exchanger
Drive	shaft
Engine controls	bowden cable
Engine controls	bowden cable
Bowthruster	yes
Propeller type	reversible Max Power
Propeller blades	3
Propeller shaft material	stainless steel
Manual bilge pump	yes
Electric bilge pump	yes
Generator	Onan 6.5 kW
Batteries	3 x
Start battery	1 x

## NAVIGATION

Compass	3 x
Depth sounder	yes



Log	yes
Windset	yes
Autopilot	yes
Plotter/GPS	yes
Navigation lights	yes

## EQUIPMENT

Sprayhood	yes
Cockpit table	yes
Bathing platform	yes
Boarding ladder	yes
Anchor	CQR Plough
Anchor chain	50m
Windlass	electrical
Dinghy	yes
Outboard	2 outboards, long and short shafted
Railing side opening gates	yes
Pushpit	yes
Pulpit	yes
Life raft	Arimar, outdated
Safety harness	yes
Horn	yes
Fenders	6
Mooring lines	yes
Radio	yes
Clock - barometer	yes

## RIGGING

Rigging	ketch-cutter
Standing rigging	wire
Brand mast	Seldén



<b>Material mast</b>	aluminium
<b>Mainsail</b>	38m <sup>2</sup>
<b>Mainsail cover</b>	yes
<b>Mizzen</b>	13,5m <sup>2</sup>
<b>Jib</b>	Self tacking, 23,7m <sup>2</sup>
<b>Genoa I</b>	66m <sup>2</sup>
<b>Genoa II</b>	50m <sup>2</sup>
<b>Cutter furler</b>	yes
<b>A-symmetric spi</b>	Blister 150m <sup>2</sup>
<b>Self tacking jib installation</b>	yes
<b>Reefing System</b>	slabreefing
<b>Backstay adjuster</b>	yes
<b>Primary sheet winch</b>	2 x Lewmar 30ST main sail
<b>Secondary sheet winch</b>	1 x Lewmar 8 for Mizzen
<b>Genoa sheetwinches</b>	2 x Lewmar 52ST Genoa
<b>Spi-pole</b>	yes



# NAUTICAT 43





# NAUTICAT 43



# NAUTICAT 43



# NAUTICAT 43





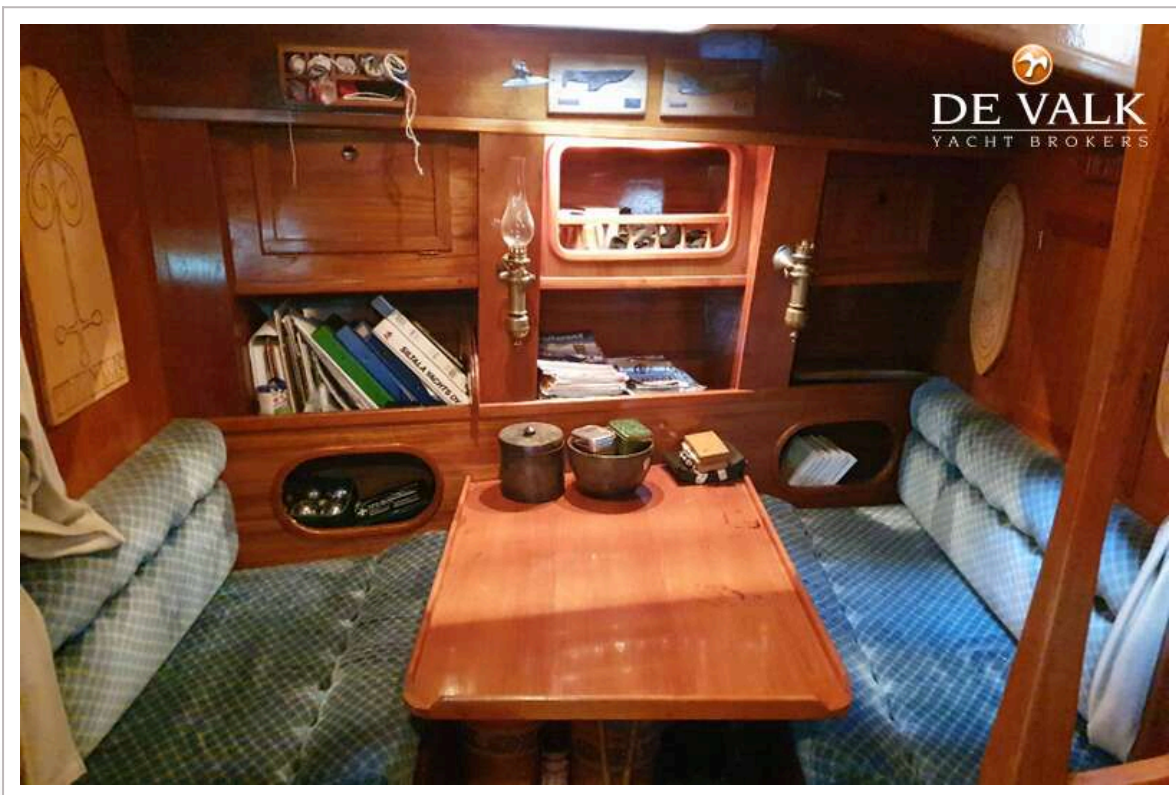
# NAUTICAT 43



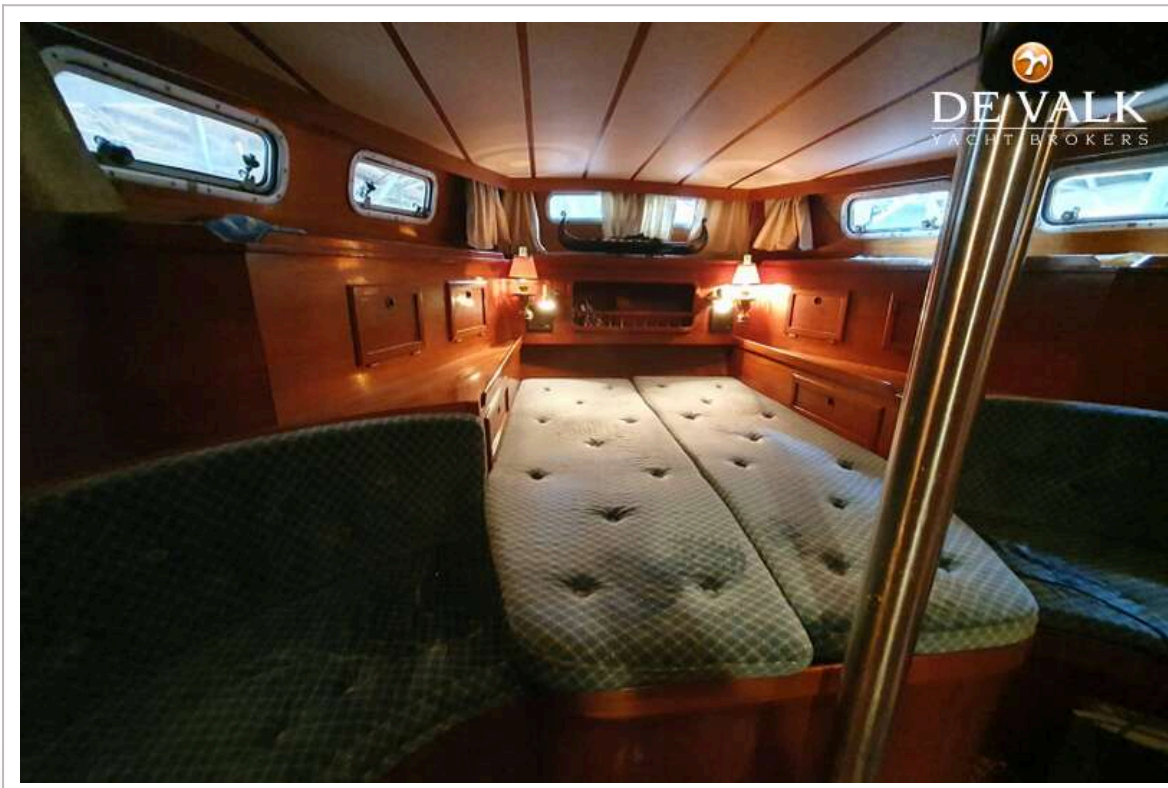
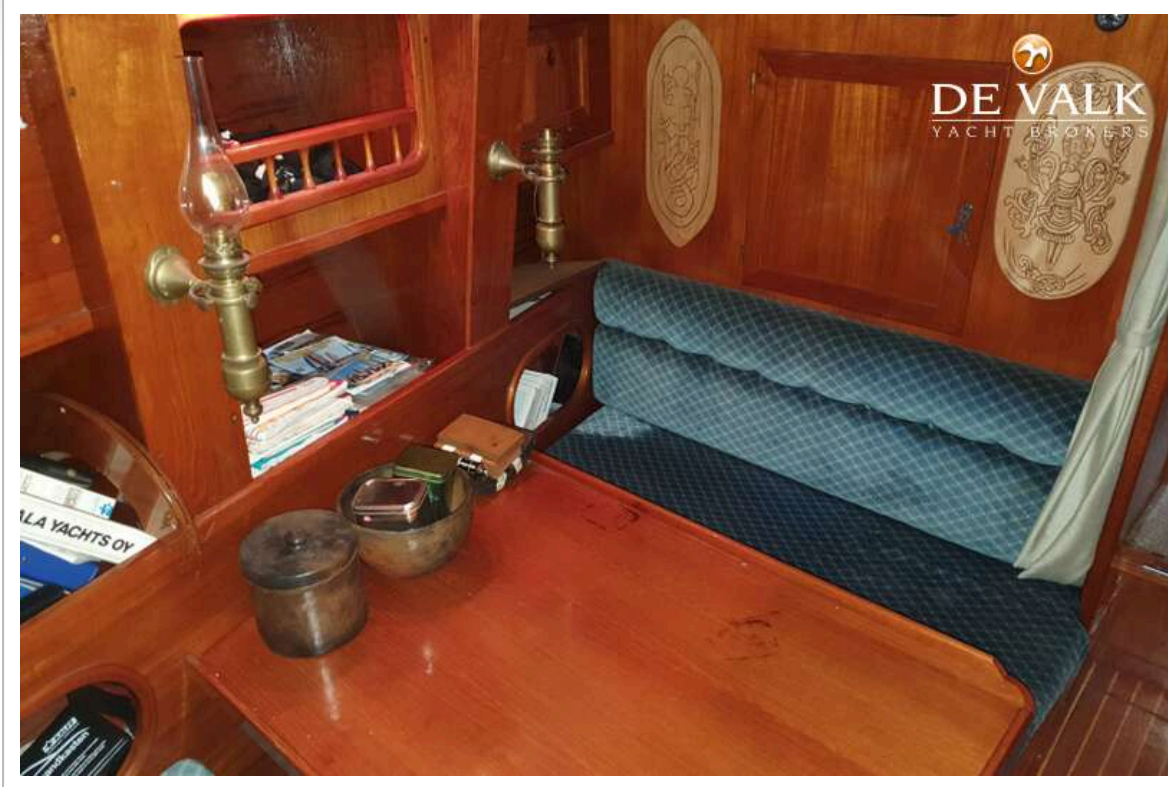
# NAUTICAT 43



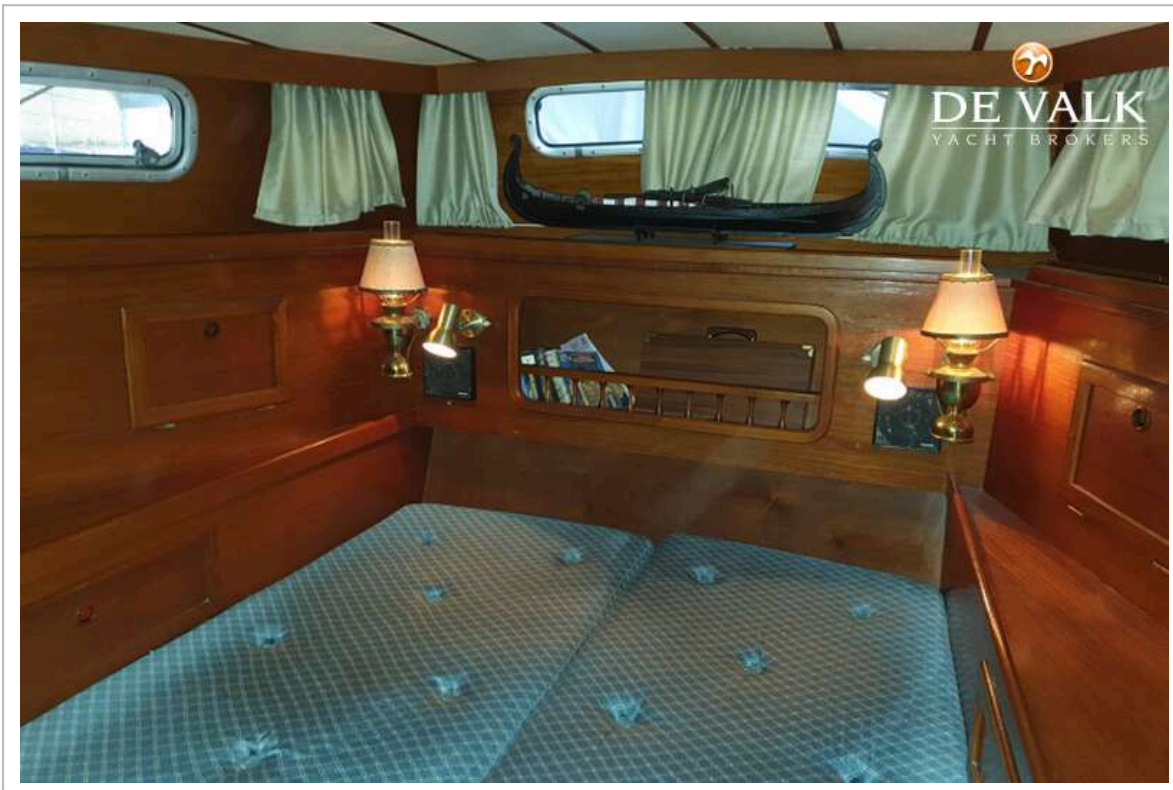
# NAUTICAT 43

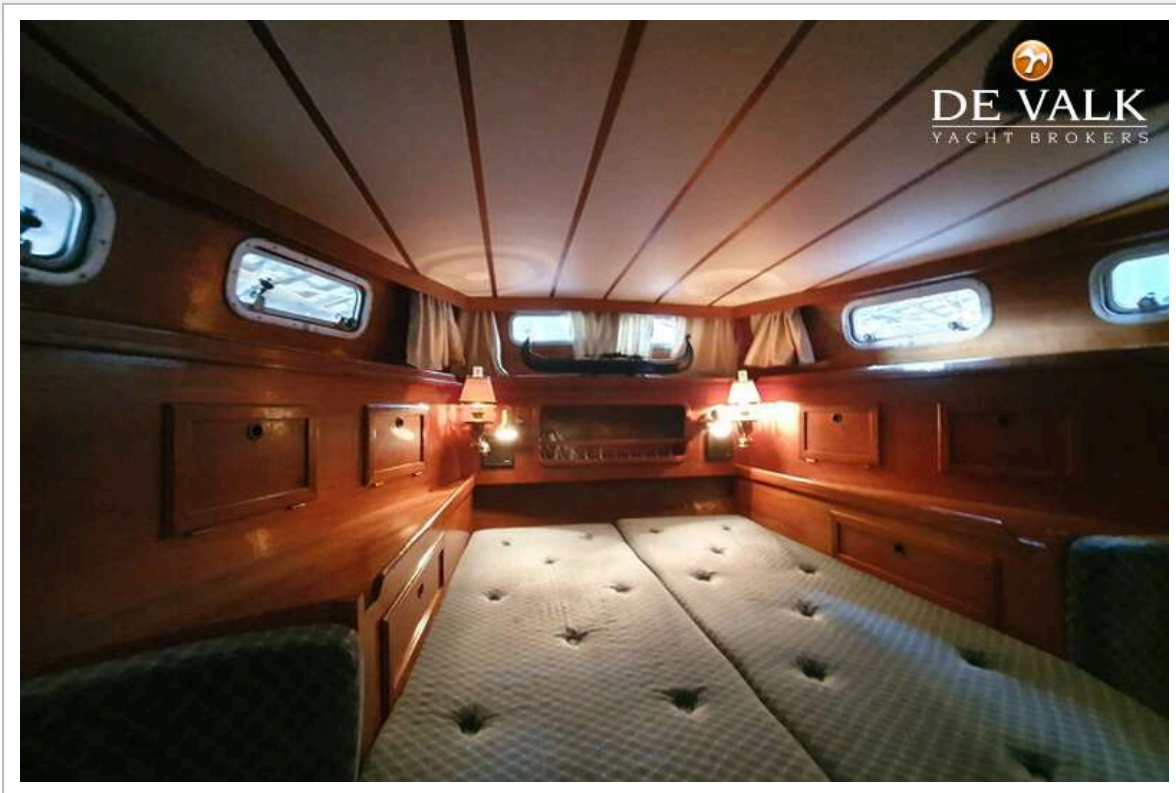


# NAUTICAT 43

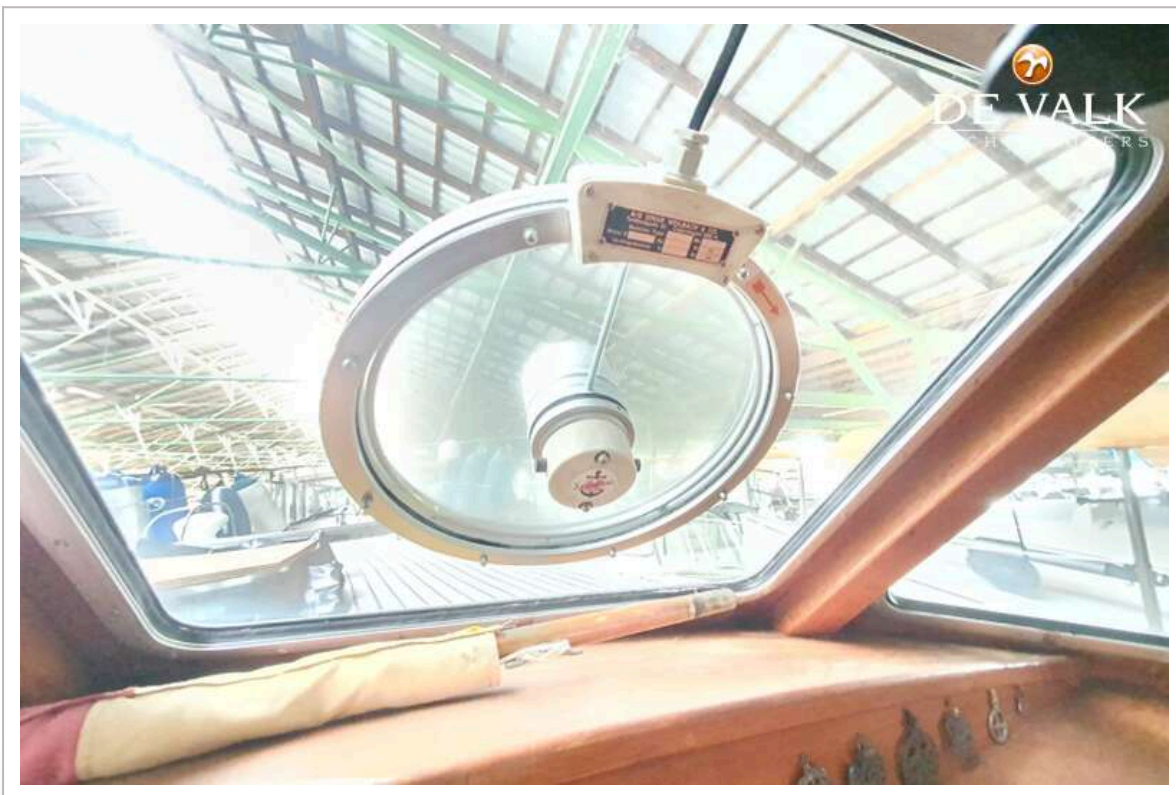
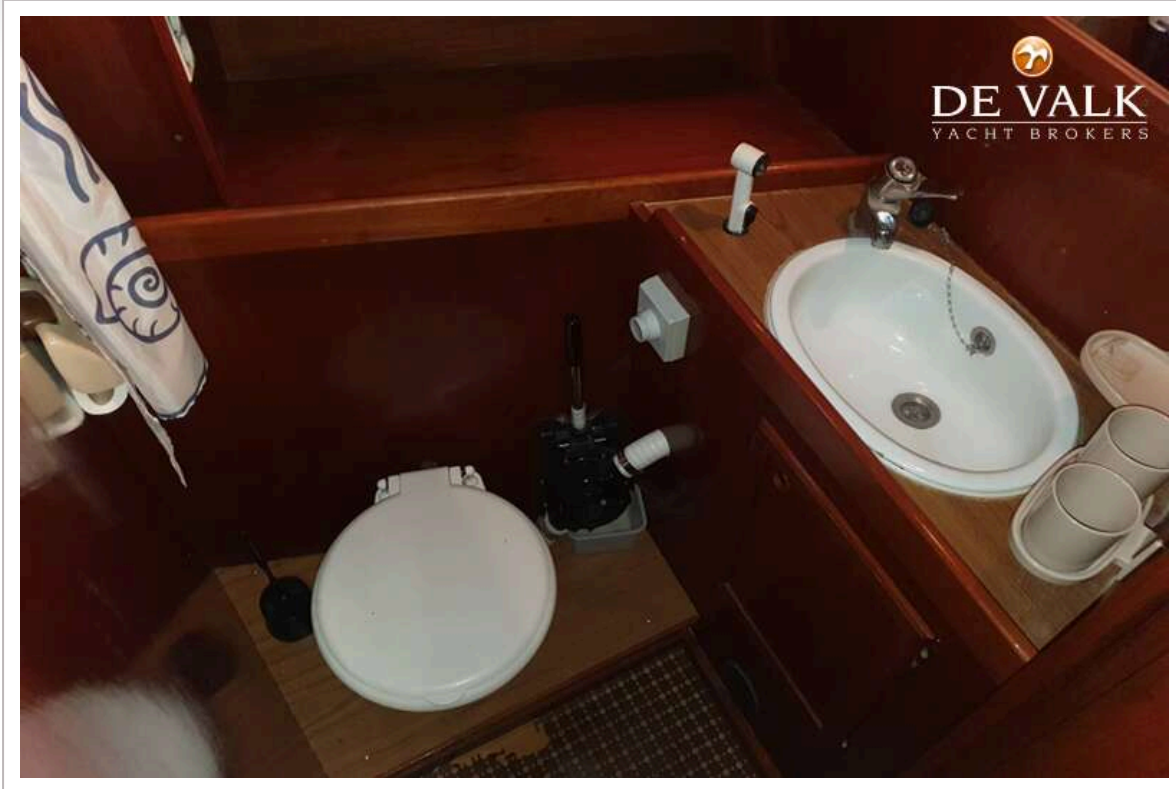


# NAUTICAT 43









# NAUTICAT 43

