



DE VALK  
YACHT BROKERS



JEANNEAU SUN ODYSSEY 40 DS



DE VALK  
YACHT BROKERS

# JEANNEAU SUN ODYSSEY 40 DS

## BROKER'S COMMENTS

This ever-popular Jeanneau Sun Odyssey 40 DS offers an exceptional sense of space, a bright and airy interior, and excellent sailing performance. Equipped a nice set of sails, davits, a bow thruster, a new chartplotter, bimini, and sprayhood. She is well maintained throughout, though lightly used by her current owner. Below deck features two comfortable cabins, two bathrooms, and a generously sized galley with outstanding storage. A superb yacht combining space, comfort, and ease of handling. Berth in Denia available by negotiation.

*Willem Koopmans*

## SPECIFICATIONS

|                     |                         |                |                        |
|---------------------|-------------------------|----------------|------------------------|
| <b>Dimensions</b>   | 11.95 x 3.95 x 1.95 (m) | <b>Builder</b> | Jeanneau Chantiers SA  |
| <b>Built</b>        | 2004                    | <b>Cabins</b>  | 2                      |
| <b>Material</b>     | GRP                     | <b>Berths</b>  |                        |
| <b>Engine(s)</b>    | 1 x Volvo Penta diesel  | <b>Hp/Kw</b>   | 75.00 (hp), 55.20 (kw) |
| <b>Asking price</b> | € 99.500 (VAT Paid)     | <b>Lying</b>   | contact sales office   |

## CONTACT

|                     |   |                  |                       |
|---------------------|---|------------------|-----------------------|
| <b>Sales office</b> | De Valk Costa Blanca                              | <b>Telephone</b> | +34 96 50 21 569      |
| <b>Address</b>      | Costa Blanca Region<br>03730 Javea Alicante<br>ES | <b>E-mail</b>    | costablanca@devalk.nl |

## DISCLAIMER

These particulars are given in good faith as supplied but cannot be guaranteed.



# JEANNEAU SUN ODYSSEY 40 DS

## GENERAL

|                                     |                            |
|-------------------------------------|----------------------------|
| <b>Model</b>                        | JEANNEAU SUN ODYSSEY 40 DS |
| <b>Type</b>                         | sailing yacht              |
| <b>LOA (m)</b>                      | 11,95                      |
| <b>LWL (m)</b>                      | 10,17                      |
| <b>Beam (m)</b>                     | 3,95                       |
| <b>Draft (m)</b>                    | 1,95                       |
| <b>Year built</b>                   | 2004                       |
| <b>Builder</b>                      | Jeanneau Chantiers SA      |
| <b>Country</b>                      | France                     |
| <b>Designer</b>                     | Daniel Andrieu             |
| <b>Displacement (t)</b>             | 7,2                        |
| <b>Ballast (tonnes)</b>             | 2,8                        |
| <b>CE norm</b>                      | A                          |
| <b>Hull material</b>                | GRP                        |
| <b>Hull colour</b>                  | off-white                  |
| <b>Hull shape</b>                   | round-bilged               |
| <b>Keel type</b>                    | fin keel Cast iron         |
| <b>Superstructure material</b>      | GRP                        |
| <b>Rubbing strake</b>               | yes                        |
| <b>Deck material</b>                | GRP                        |
| <b>Deck finish</b>                  | non-skid moulded in        |
| <b>Superstructure deck finish</b>   | non-skid moulded in        |
| <b>Cockpit deck finish</b>          | teak                       |
| <b>Antifouling (year)</b>           | 2025                       |
| <b>Window material</b>              | perspex                    |
| <b>Deckhatch</b>                    | yes                        |
| <b>Fuel tank (litre)</b>            | stainless steel 180        |
| <b>Level indicator (fuel tank)</b>  | yes                        |
| <b>Freshwater tank (litre)</b>      | 350 ltr over 2tanks        |
| <b>Level indicator (freshwater)</b> | yes                        |



# JEANNEAU SUN ODYSSEY 40 DS

|                            |                              |
|----------------------------|------------------------------|
| Blackwater tank (litre)    | yes                          |
| Blackwater tank extraction | yes                          |
| Wheel steering             | Whitlock collapsible wheel   |
| Outside helm position      | yes                          |
| Flybridge helm position    | cable steering               |
| Emergency tiller           | yes                          |
| More info on hull          | 2015 antifouling 2024 polish |

## ACCOMMODATION

|                       |  |
|-----------------------|--|
| Cabins                | 2  |
| Interior              | teak   |
| Layout                | Owner in front, guest port aft at sb huge locker at galley |
| Floor                 | teak and holly   |
| Saloon                | yes  |
| Headroom saloon (m)   | 2  |
| Heating               | Webasto Air  |
| Chart table           | yes  |
| Aft Cabin             | yes  |
| Dinette               | yes  |
| Galley                | On starboard   |
| Countertop            | Duropal  |
| Sink                  | stainless steel Double                                     |
| Cooker                | calor gas 2-burner   |
| Oven                  | yes  |
| Fridge                | yes  |
| Hot water system      | 220V + engine Boiler                                       |
| Water pressure system | electrical   |
| Owners cabin          | double bed In front  |
| Bed length (m)        | 2  |
| Wardrobe              | hanging and shelves  |
| Bathroom              | en suite   |



# JEANNEAU SUN ODYSSEY 40 DS

|                |                          |
|----------------|--------------------------|
| Toilet         | en suite                 |
| Toilet system  | manual                   |
| Wash basin     | in the bathroom          |
| Shower         | en suite                 |
| Guest cabin 1  | double bed Port aft side |
| Bed length (m) | 2                        |
| Wardrobe       | hanging and shelves      |
| Bathroom       | shared                   |
| Toilet         | shared                   |
| Toilet system  | manual                   |
| Wash basin     | in the bathroom          |
| Shower         | shared                   |

## MACHINERY

|                       |                             |
|-----------------------|-----------------------------|
| No of engines         | 1                           |
| Make                  | Volvo Penta                 |
| HP                    | 75                          |
| kW                    | 55.20                       |
| Fuel                  | diesel                      |
| Year installed        | 2004                        |
| Maximum speed (kn)    | 8                           |
| Cruising speed (kn)   | 6,5                         |
| Consumption (l/hr)    | 3                           |
| Engine hours          | 1400                        |
| Engine cooling system | freshwater heat exchanger   |
| Drive                 | shaft                       |
| Shaft seal            | Volvo seal                  |
| Engine controls       | bowden cable                |
| Gearbox               | mechanical Replaced in 2018 |
| Bowthruster           | Max prop                    |
| Exhaust               | watercooled                 |



# JEANNEAU SUN ODYSSEY 40 DS

|                                 |                      |
|---------------------------------|----------------------|
| <b>Propeller type</b>           | fixed                |
| <b>Propeller blades</b>         | 3                    |
| <b>Propeller shaft material</b> | stainless steel      |
| <b>Shaft lubrication</b>        | water                |
| <b>Manual bilge pump</b>        | yes                  |
| <b>Electric bilge pump</b>      | yes                  |
| <b>Electrical installation</b>  | 12/230               |
| <b>Start battery</b>            | New 2025             |
| <b>Service battery</b>          | 2 x new Varta 100 Ah |
| <b>Bowthruster battery</b>      | In front             |
| <b>Battery charger</b>          | yes                  |
| <b>Wind generator</b>           | yes                  |
| <b>Solar panel</b>              | yes                  |
| <b>Shorepower</b>               | yes                  |

## NAVIGATION

|                               |                            |
|-------------------------------|----------------------------|
| <b>Compass</b>                | yes                        |
| <b>Electric compass</b>       | On pilot                   |
| <b>Depth sounder/log</b>      | Raymarine ST 60 Tridata    |
| <b>Windset</b>                | Raymarine ST 60 wind       |
| <b>VHF</b>                    | Navman VHF 7100            |
| <b>Autopilot</b>              | Raymarine ST 6001          |
| <b>Rudder angle indicator</b> | On pilot                   |
| <b>Plotter/GPS</b>            | New 2025 Raymarine 7"touch |
| <b>Navigation lights</b>      | yes                        |

## EQUIPMENT

|                         |          |
|-------------------------|----------|
| <b>Sprayhood</b>        | New 2025 |
| <b>Bimini</b>           | New 2025 |
| <b>Cockpit table</b>    | yes      |
| <b>Bathing platform</b> | yes      |



# JEANNEAU SUN ODYSSEY 40 DS

|                            |                     |
|----------------------------|---------------------|
| Boarding ladder            | yes                 |
| Gangway                    | yes                 |
| Deck shower                | yes                 |
| Anchor                     | CQR Plough          |
| Anchor chain               | 50 mtr 10 mm        |
| Anchor 2                   | Stern anchor, 16 kg |
| Anchor chain               | Belt on roll        |
| Windlass                   | Maxwell             |
| Dinghy                     | Grand Line S 330 HS |
| Outboard                   | Mercury 3.5         |
| Outboard support           | yes                 |
| Davits                     | stainless steel     |
| Deck crane                 | manual              |
| Sea railing                | yes                 |
| Life raft                  | valise (or bag)     |
| Life raft (pers)           | 6                   |
| Last life raft survey      | Needs service check |
| Lifejackets                | yes                 |
| Fenders                    | yes                 |
| Mooring lines              | yes                 |
| Radio                      | Pioneer             |
| Speakers in salon          | yes                 |
| Fire extinguisher          | yes                 |
| Latest extinguisher survey | yes                 |

## RIGGING

|                  |           |
|------------------|-----------|
| Rigging          | cutter    |
| Standing rigging | wire      |
| Brand mast       | Z-Spar    |
| Material mast    | aluminium |
| Spreaders        | 2         |



|                           |                      |
|---------------------------|----------------------|
| <b>Mainsail</b>           | Stoway replaced 2016 |
| <b>Stoway mast</b>        | yes                  |
| <b>Genoa</b>              | Ca 2016              |
| <b>Genoa furler</b>       | Profurl              |
| <b>Reefing System</b>     | main in-mast furling |
| <b>Boomvang</b>           | gasspring            |
| <b>Genoa sheetwinches</b> | yes                  |
| <b>Halyard winches</b>    | yes                  |



JEANNEAU SUN ODYSSEY 40 DS



# JEANNEAU SUN ODYSSEY 40 DS



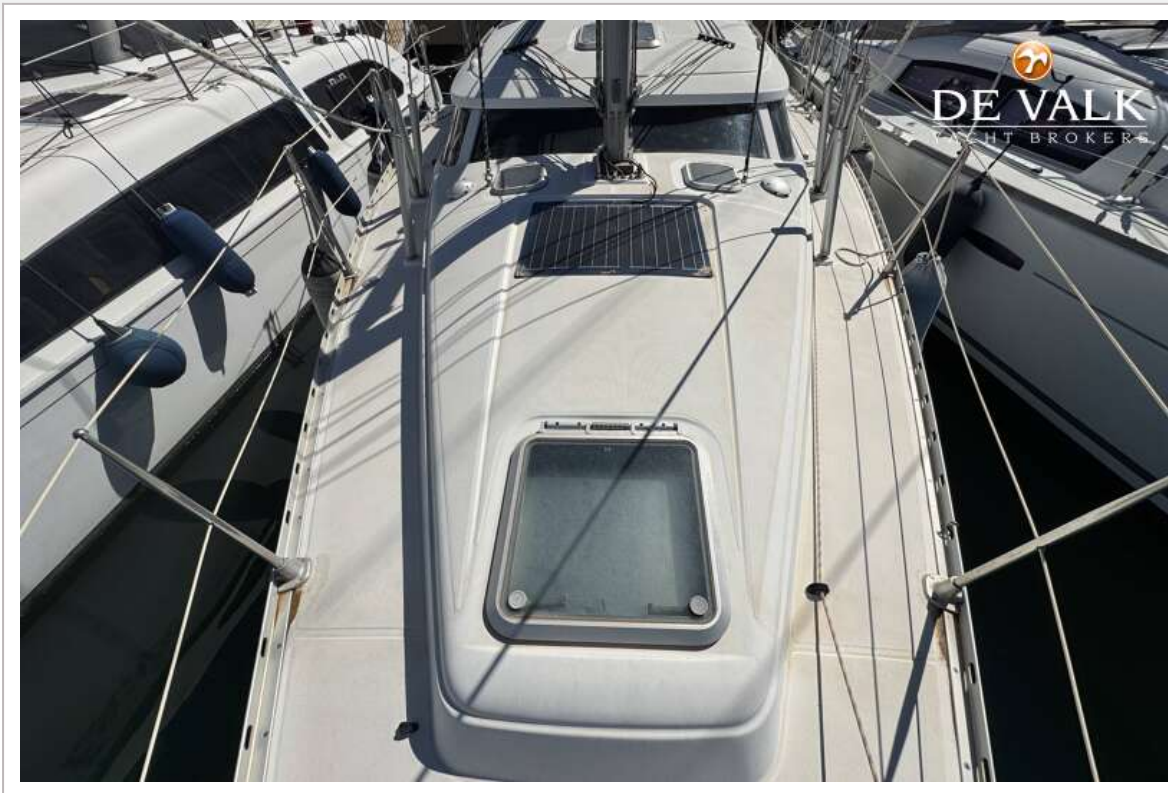
JEANNEAU SUN ODYSSEY 40 DS



JEANNEAU SUN ODYSSEY 40 DS



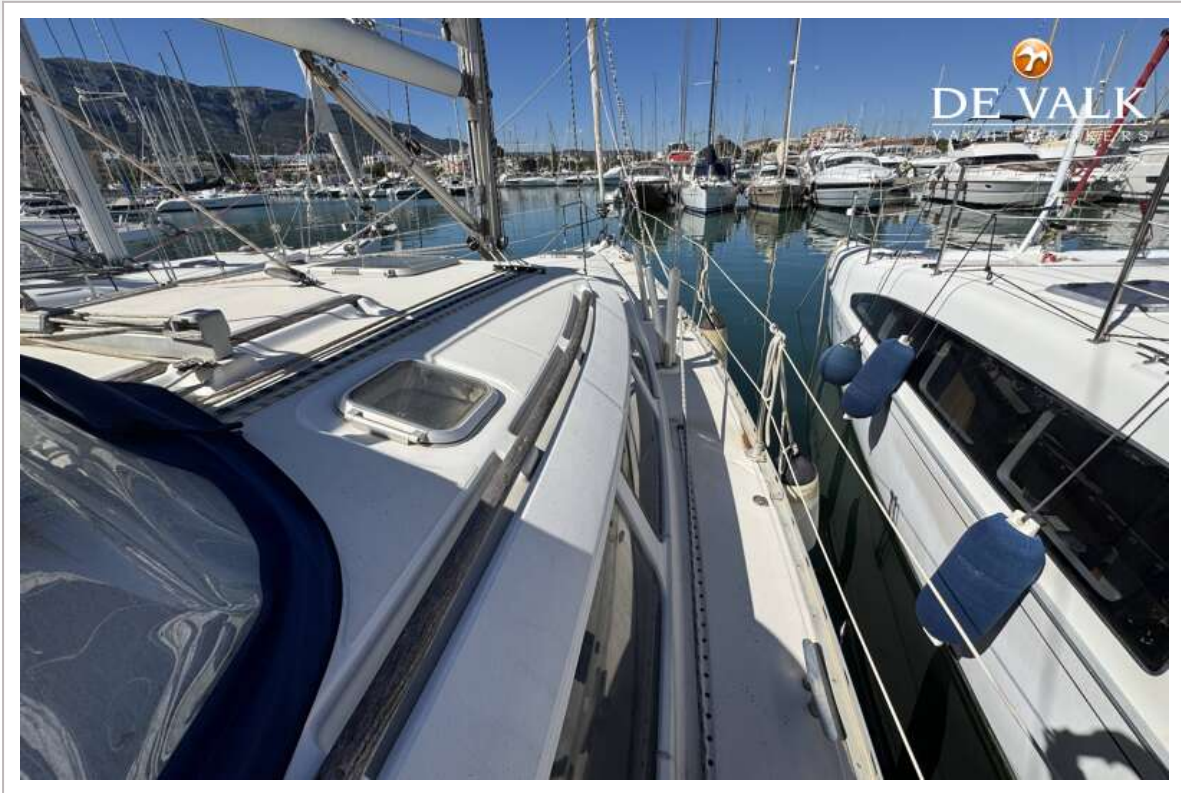
JEANNEAU SUN ODYSSEY 40 DS



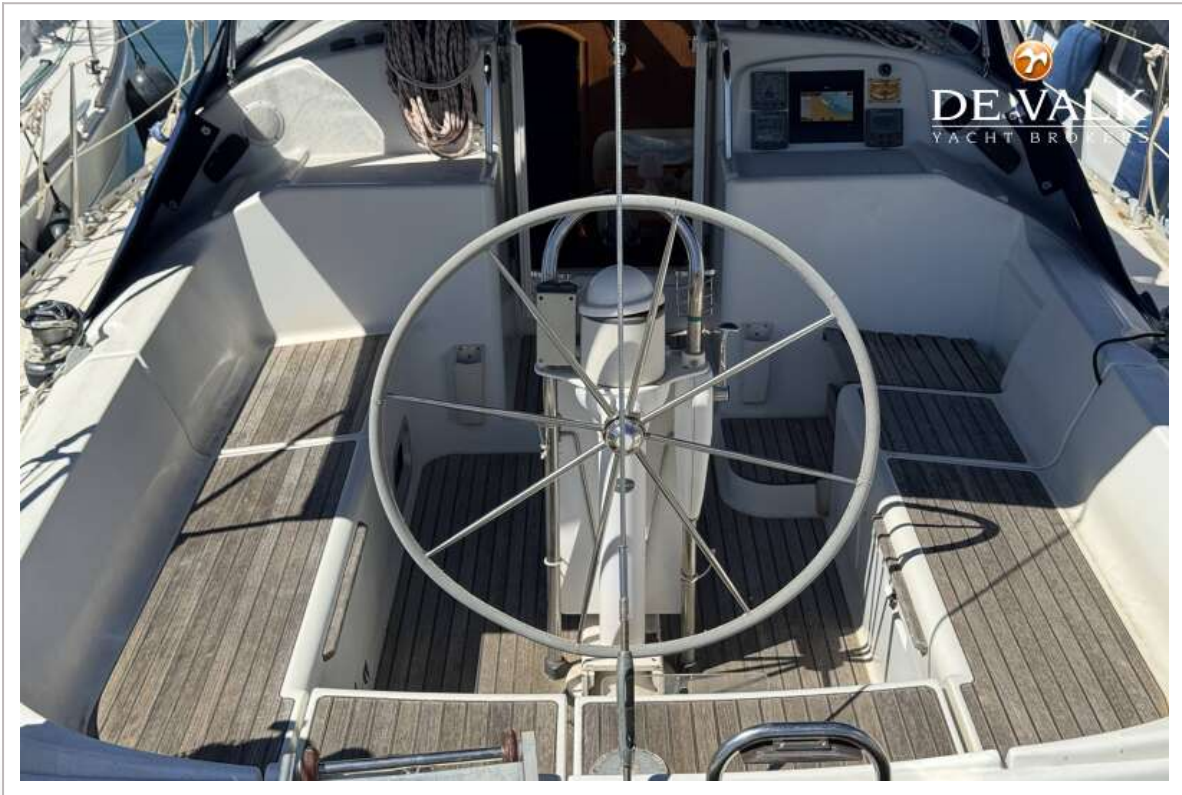
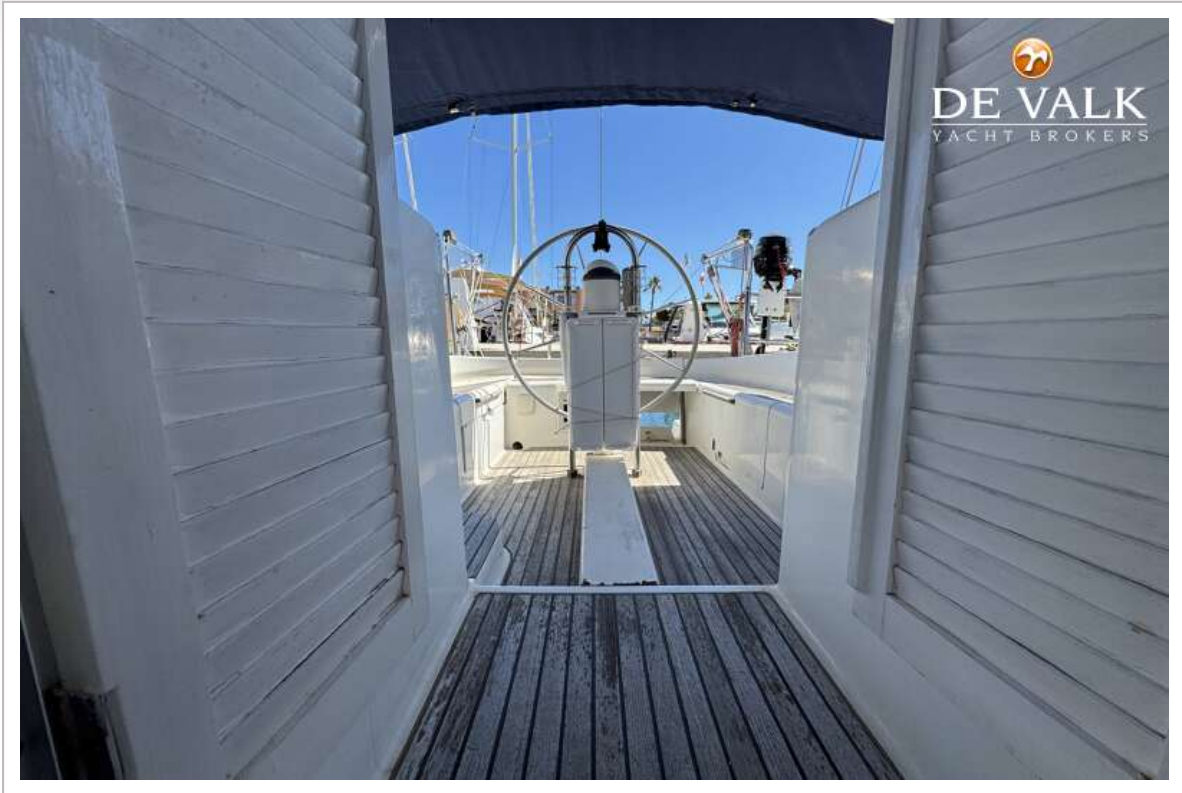
JEANNEAU SUN ODYSSEY 40 DS



JEANNEAU SUN ODYSSEY 40 DS



JEANNEAU SUN ODYSSEY 40 DS



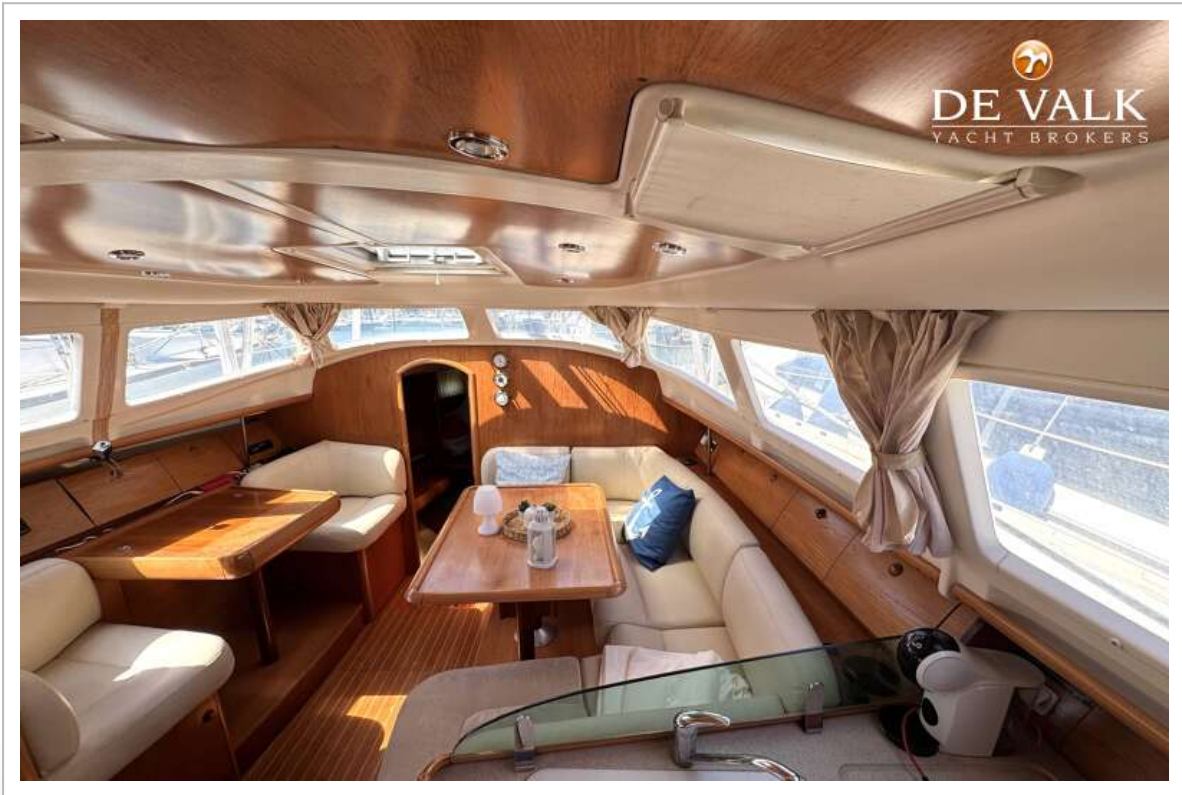
JEANNEAU SUN ODYSSEY 40 DS



JEANNEAU SUN ODYSSEY 40 DS



JEANNEAU SUN ODYSSEY 40 DS



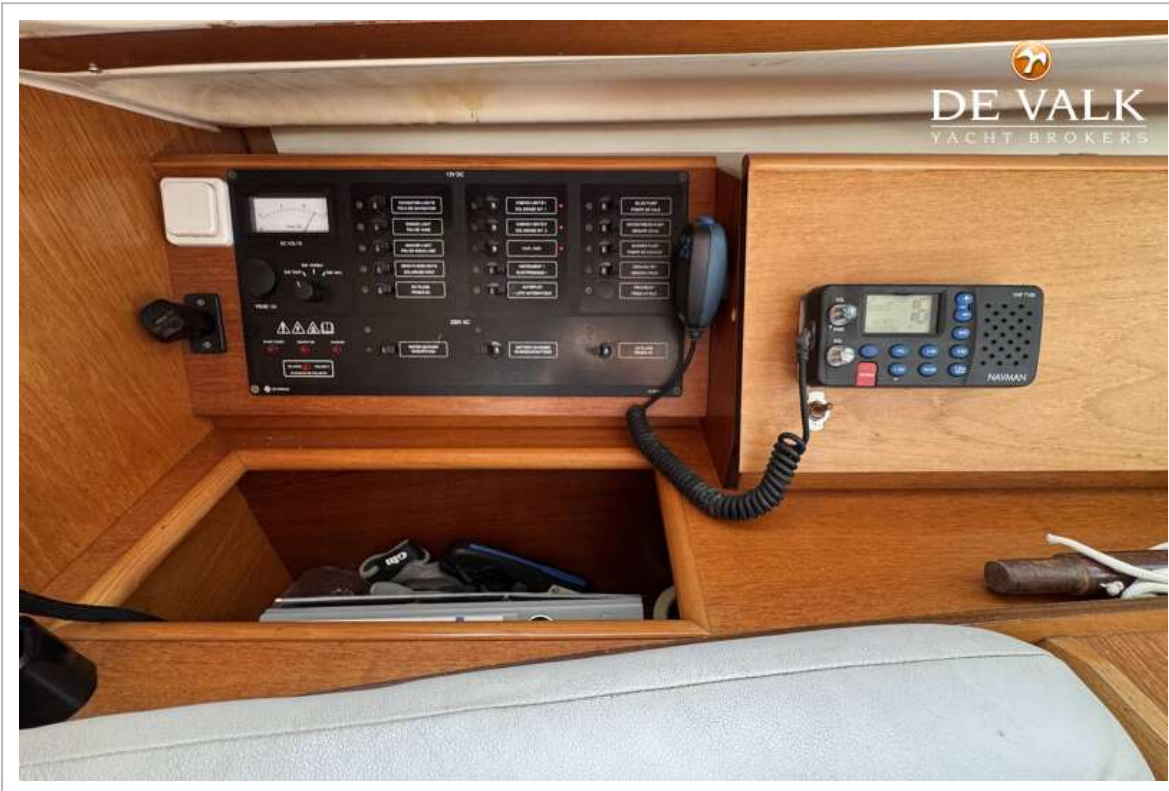
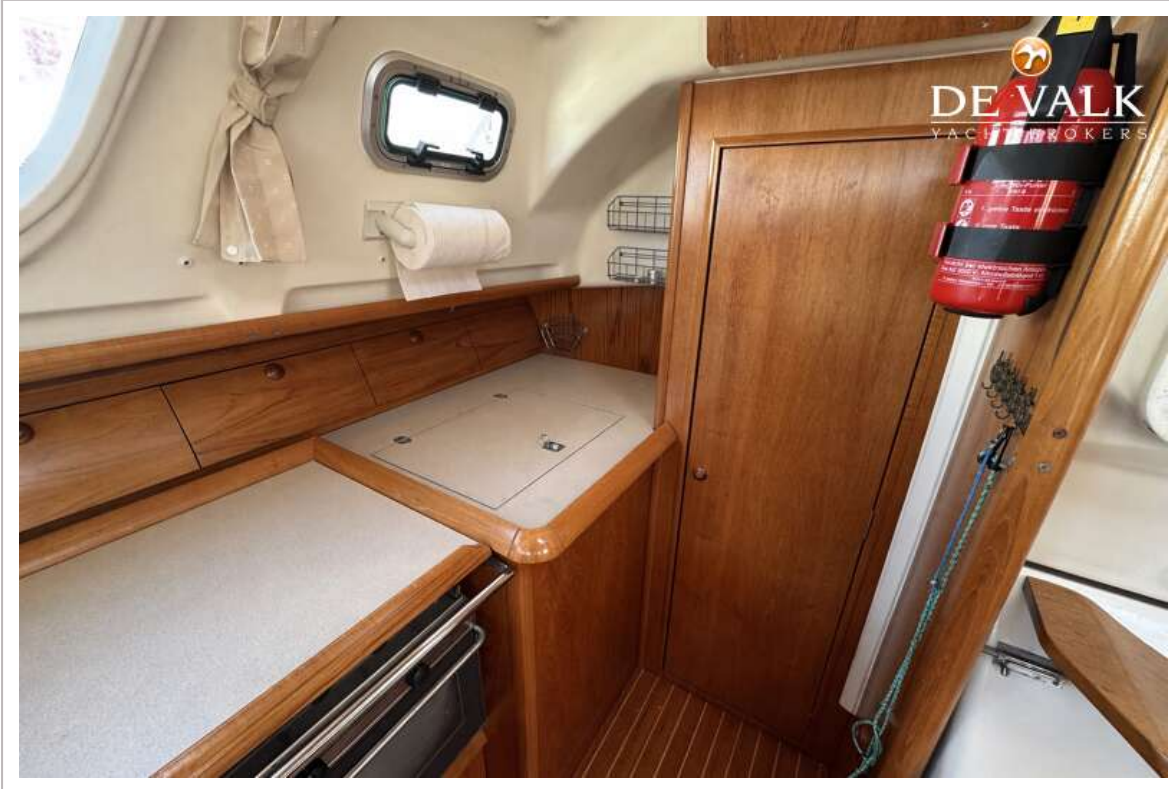
JEANNEAU SUN ODYSSEY 40 DS



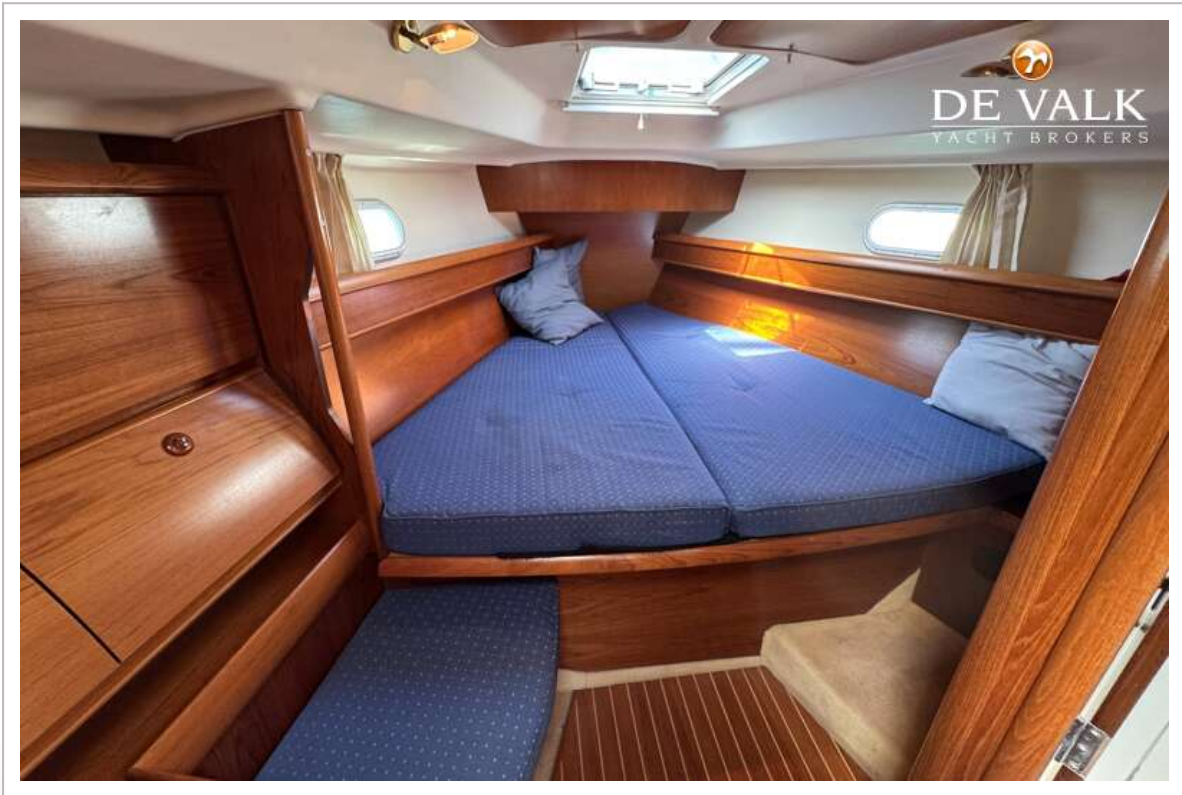
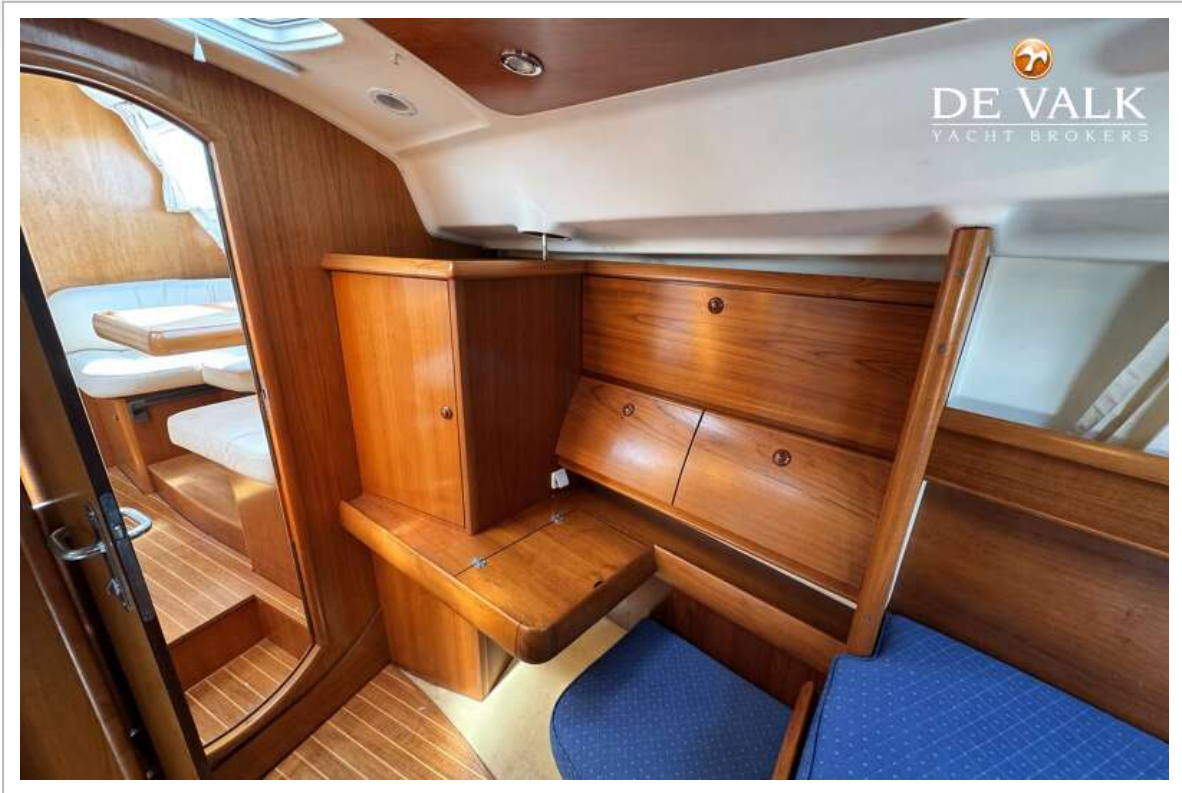
JEANNEAU SUN ODYSSEY 40 DS



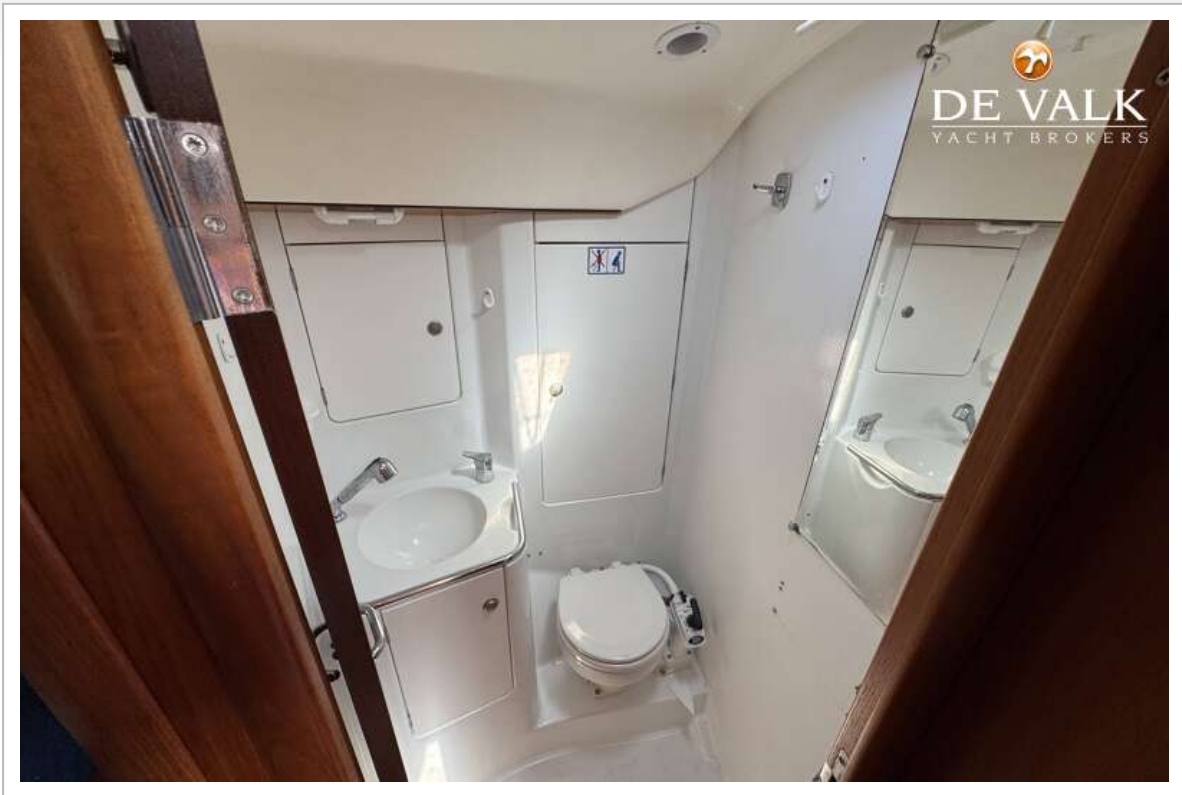
JEANNEAU SUN ODYSSEY 40 DS



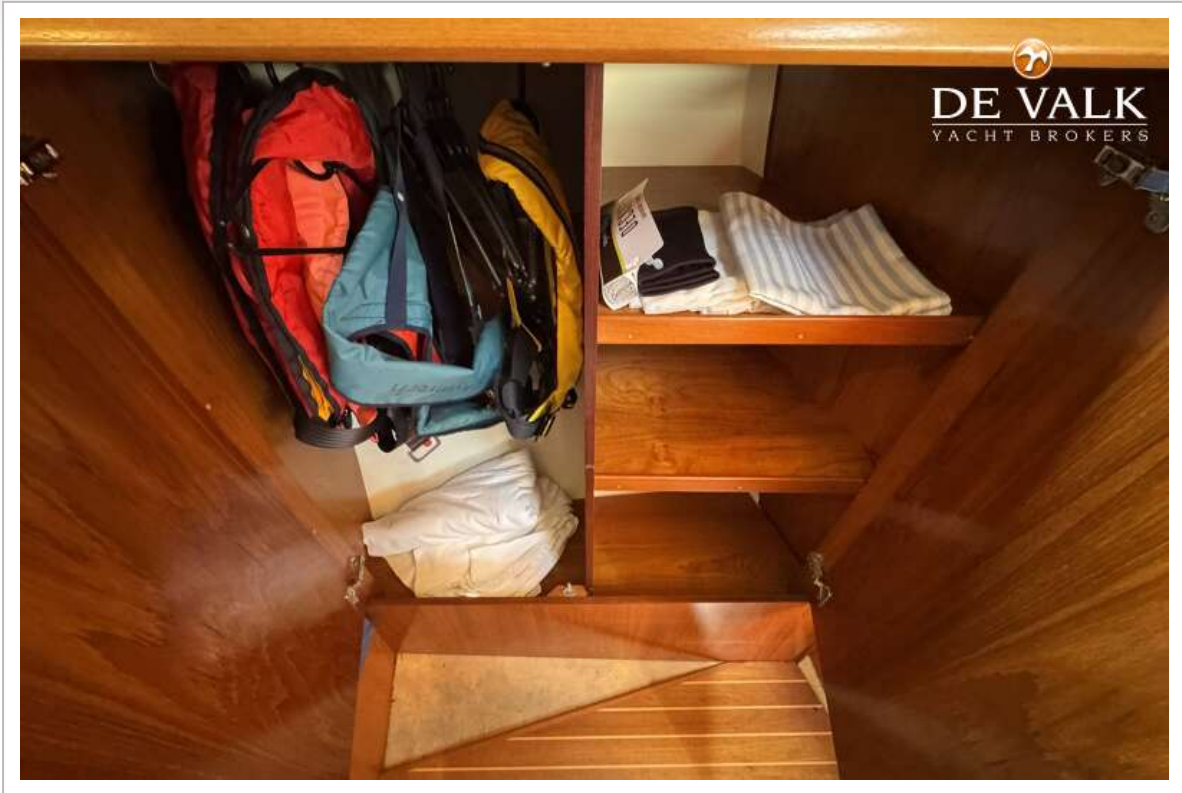
JEANNEAU SUN ODYSSEY 40 DS



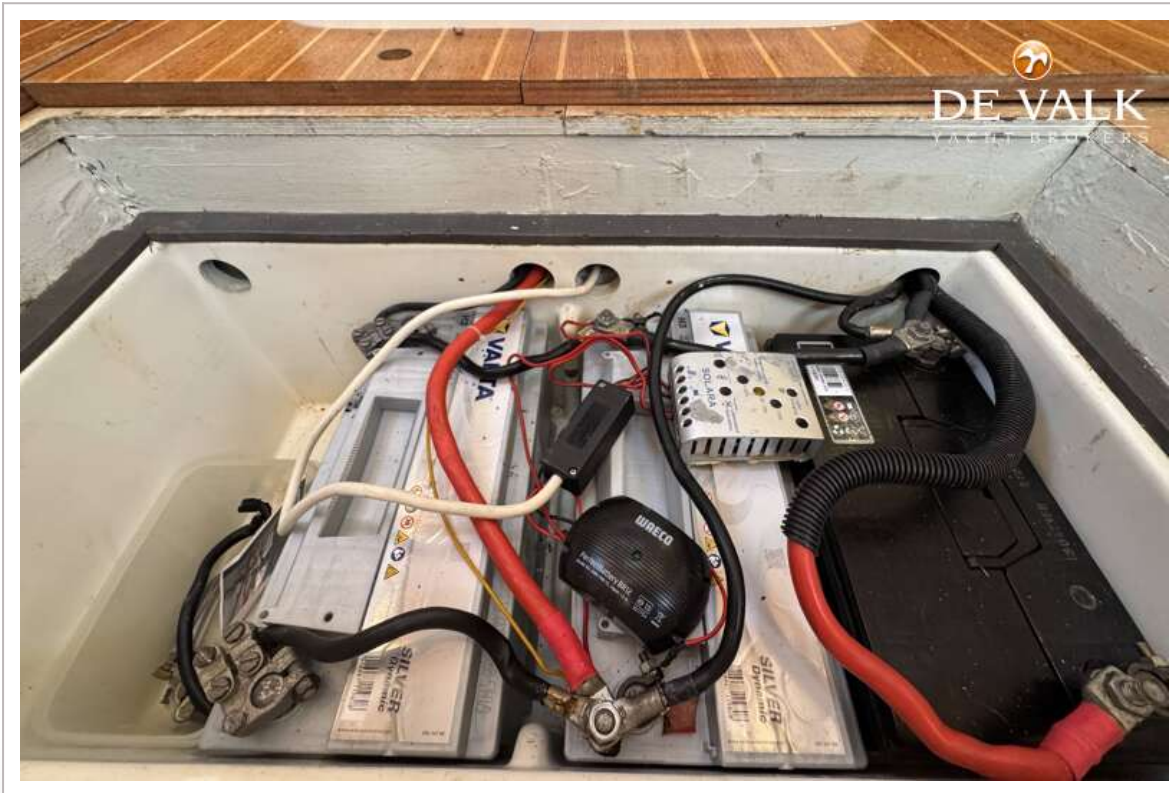
JEANNEAU SUN ODYSSEY 40 DS



JEANNEAU SUN ODYSSEY 40 DS



JEANNEAU SUN ODYSSEY 40 DS



# JEANNEAU SUN ODYSSEY 40 DS

