



DE VALK
YACHT BROKERS



ELAN IMPRESSION 45.1



DE VALK
YACHT BROKERS

BROKERAGE | CHARTER | BERTHS | FINANCE | INSURANCE | YACHT MANAGEMENT

ELAN IMPRESSION 45.1

BROKER'S COMMENTS

A well-equipped and beautifully maintained Elan 45.1, ideal for both private cruising and charter use. Featuring a 3-cabin, 2-bathroom layout, along with air conditioning and solar panels for maximum comfort and efficiency. A turnkey yacht, ready for her next owner.

Filip Mimica

SPECIFICATIONS

Dimensions	13.51 x 4.18 x 1.90 (m)	Builder	Elan
Built	2023	Cabins	3
Material	GRP	Berths	8
Engine(s)	1 x Volvo D2-75 diesel	Hp/Kw	75.00 (hp), 55.20 (kw)
Asking price	€ 199.000 (VAT Not paid)	Lying	Croatia

CONTACT

Sales office	De Valk Dalmatia	Telephone	0031 653 299 244
Address	Ul. Velimira Skorpika 22000 Sibenik HR	E-mail	dalmatia@devalk.nl

DISCLAIMER

These particulars are given in good faith as supplied but cannot be guaranteed.



ELAN IMPRESSION 45.1

GENERAL

Model	ELAN IMPRESSION 45.1
Type	sailing yacht
LOA (m)	13,51
Beam (m)	4,18
Draft (m)	1,90
Year built	2023
Launched	2023
Builder	Elan
Country	Slovenia
Displacement (t)	10,5
Ballast (tonnes)	3310KG
Hull material	GRP
Hull colour	White
Keel type	L shape
Deck material	Teak
Deck finish	Teak on the side and cockpit
Fuel tank (litre)	215l
Freshwater tank (litre)	572l
Wheel steering	Dual

ACCOMMODATION

Cabins	3
Berths	8
Interior	Natural Iroko veneered plywood
Layout	3 cabin + 2 baths
Saloon	yes
Heating	Webasto Air top EVO 55 heating
Air-conditioning	Frigomar Inverter AC 16000 BTU
Navigation center	yes
Aft Cabin	yes



ELAN IMPRESSION 45.1

Convertible berth	In saloon
Galley	yes
Sink	Double sink with tap and pressurized water system
Cooker	yes
Oven	Eno
Gas alarm	yes
Fridge	200L front opening refrigerator i galley and in cockpit
Freezer	In galley
Hot water system	yes
Water pressure system	yes
Manual and/or foot pump	Sea water
Kettle	yes
Owners cabin	yes
Bathroom	yes
Toilet	yes
Toilet system	Electric toilet Planus, fresh water
Shower	yes
Guest cabin 1	yes
Toilet	yes
Toilet system	Electric toilet Planus, fresh water
Shower	yes
Guest cabin 2	yes

MACHINERY

No of engines	1
Make	Volvo
Type	D2-75
HP	75
kW	55.20
Fuel	diesel
Year installed	2023



Drive	sail-drive
Bowthruster	Quick btq185
Propeller type	18x16 fixed
Manual bilge pump	yes
Electric bilge pump	yes
Bilge alarm	yes
Start battery	Topla 95 ah x 1
Service battery	Tab AGM 100 ah x 3
Bowthruster battery	2 x tab 100ah
Battery monitor	yes
Battery charger	Quick sbc700
Inverter	Inverter Dometic
Solar panel	Modul M-Series 100W 12V
Shorepower	yes

NAVIGATION

Compass	yes
Multi control display	B&G
Depth sounder	B&G
VHF	B&G
VHF handheld	B&G H60
Autopilot	B&G
Plotter	B&G
Navigation lights	yes

EQUIPMENT

Sprayhood	yes
Bimini	yes
Cockpit cushions	yes
Cockpit table	yes
Bathing platform	Large



ELAN IMPRESSION 45.1

Gangway	yes
Deck shower	yes
Anchor	Lewmar Delta
Anchor chain	50m
Chain counter	Windlass
Windlass	Electrical windlass 1000W with additional battery (95Ah)
Dinghy	Arimar 240
Radio	Fusion MS-RA210 with FM-F65RV
Cockpit speakers	yes
Speakers in salon	yes

RIGGING

Standing rigging	Stainless steel standing rigging 1/19
Mainsail	Selden furling mast (including furling Dacron mainsail)
Genoa	52.47 m2
Genoa furler	Selden Furlex 304
Reefing System	yes



ELAN IMPRESSION 45.1



ELAN IMPRESSION 45.1



ELAN IMPRESSION 45.1



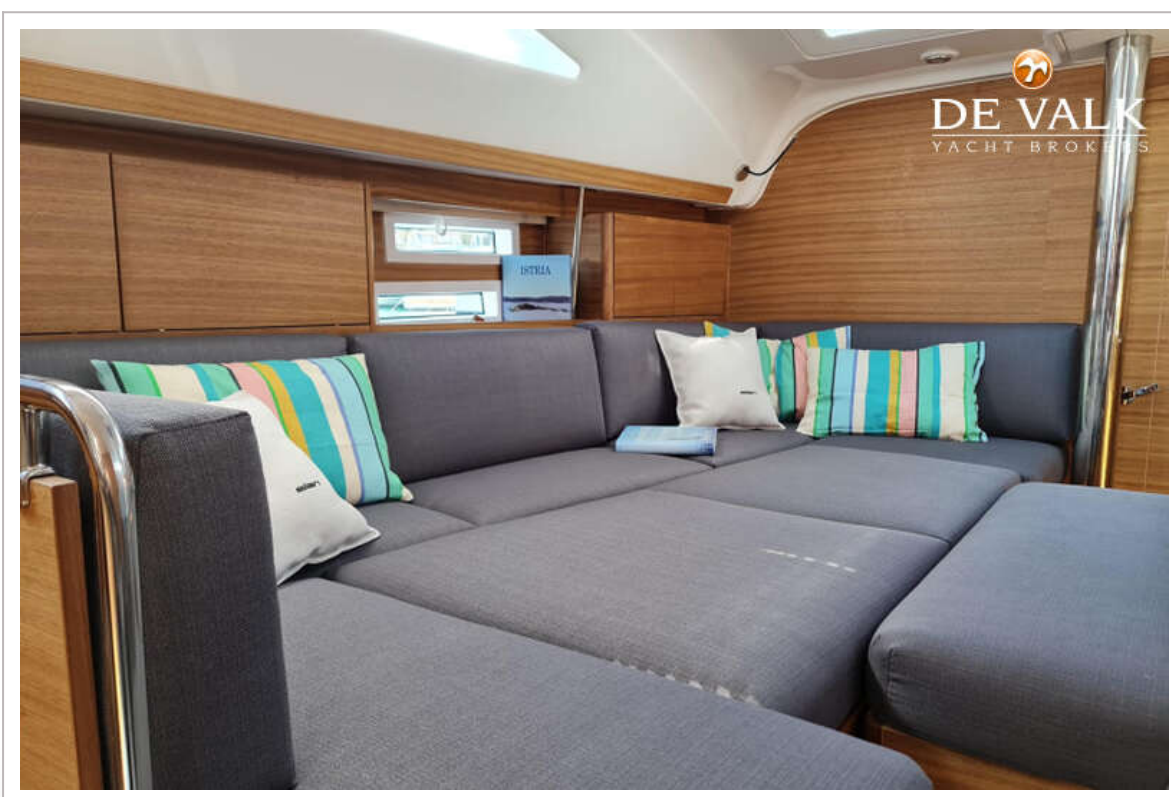
ELAN IMPRESSION 45.1



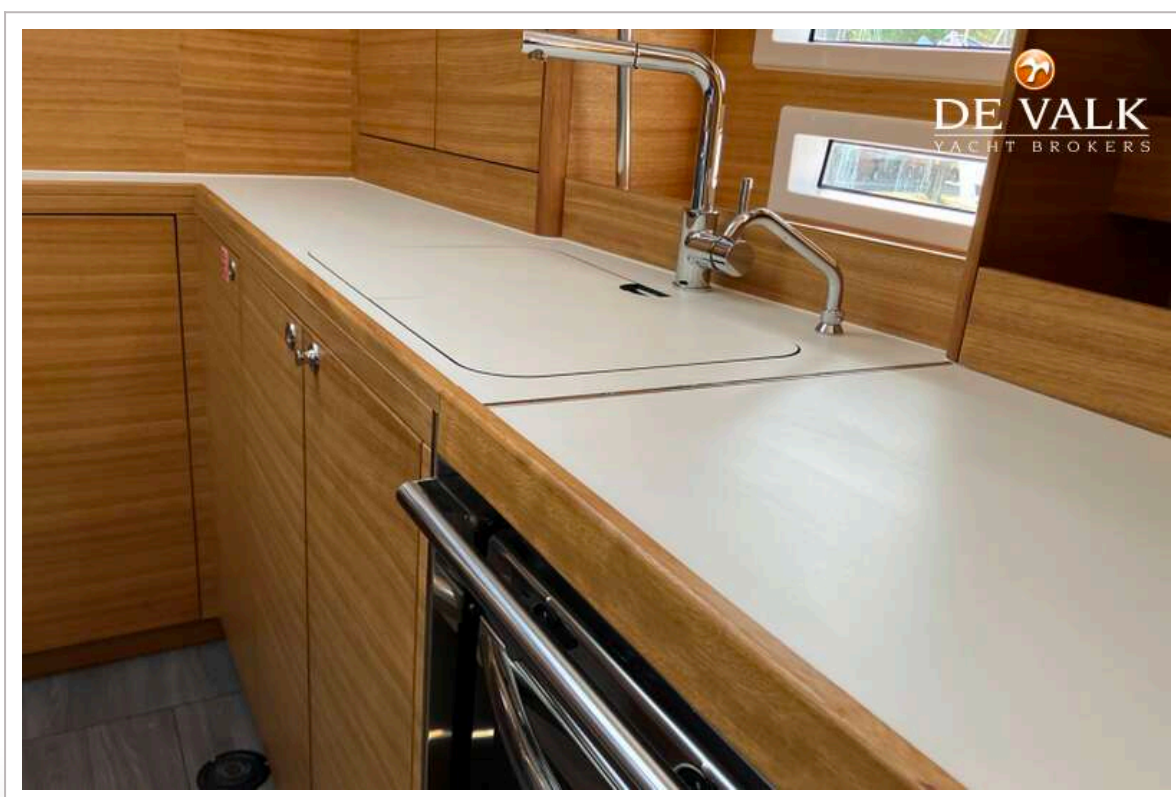
ELAN IMPRESSION 45.1



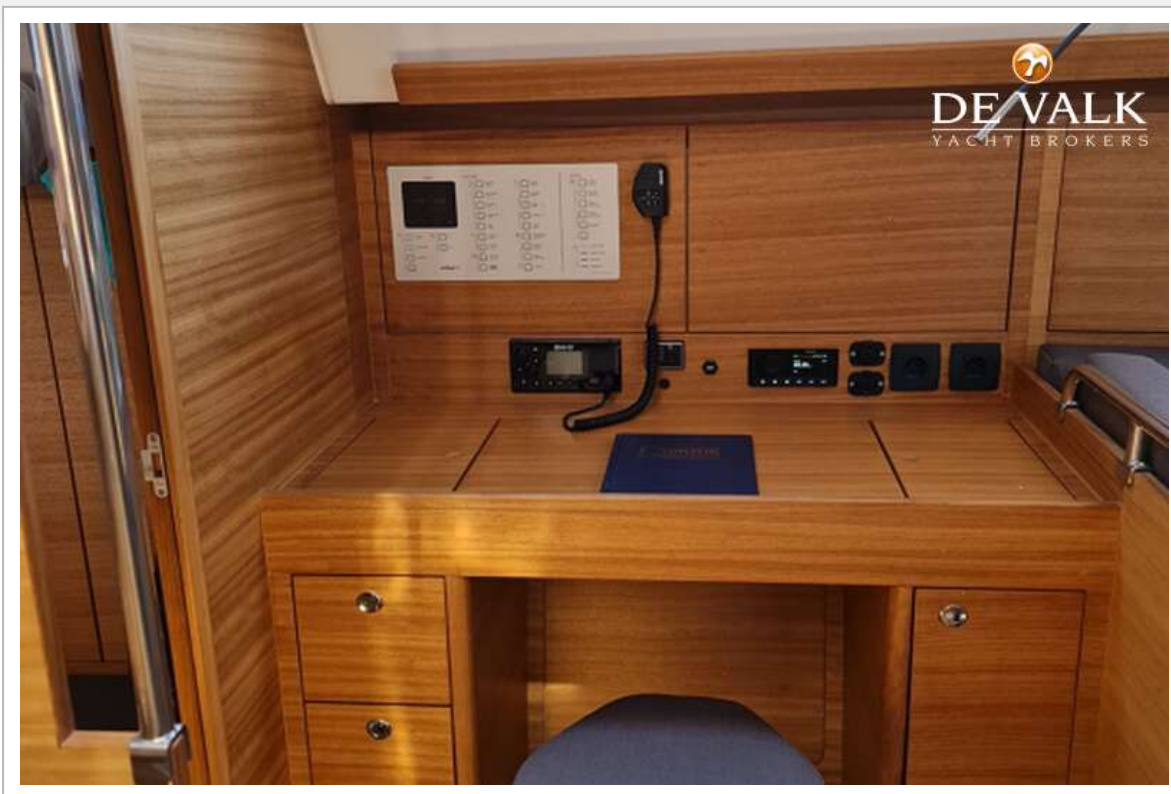
ELAN IMPRESSION 45.1



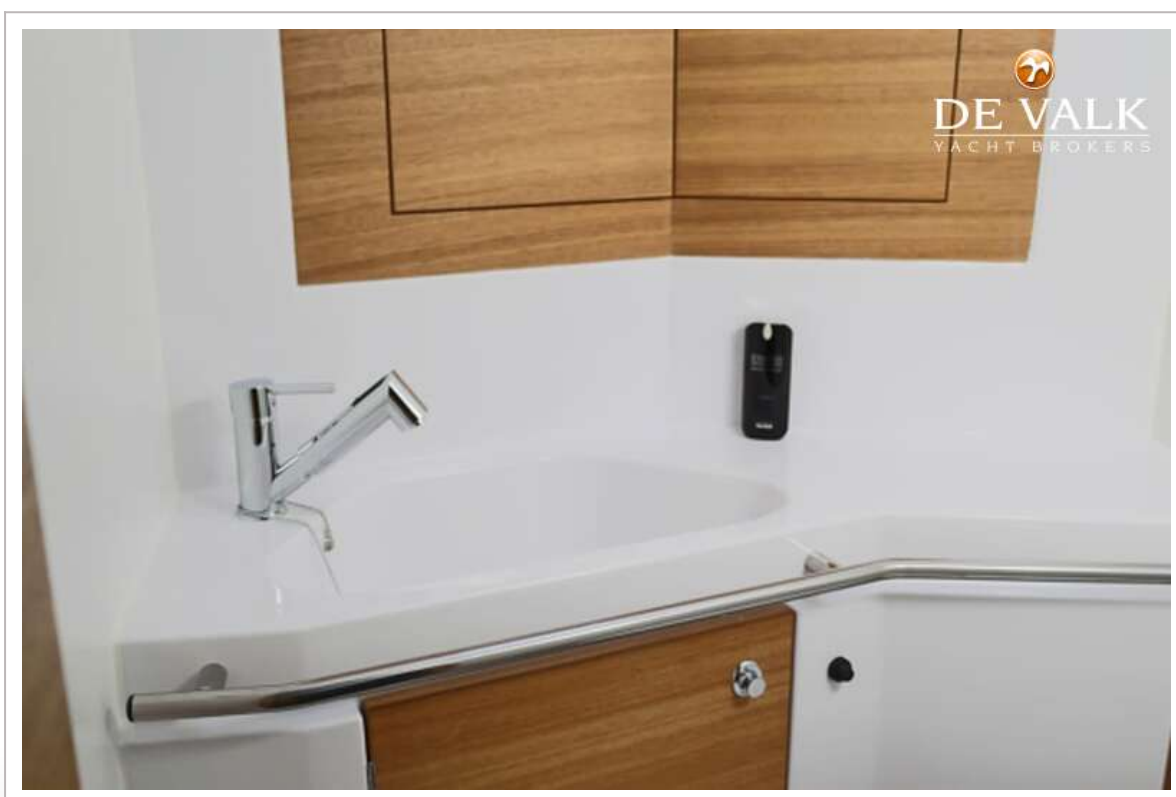
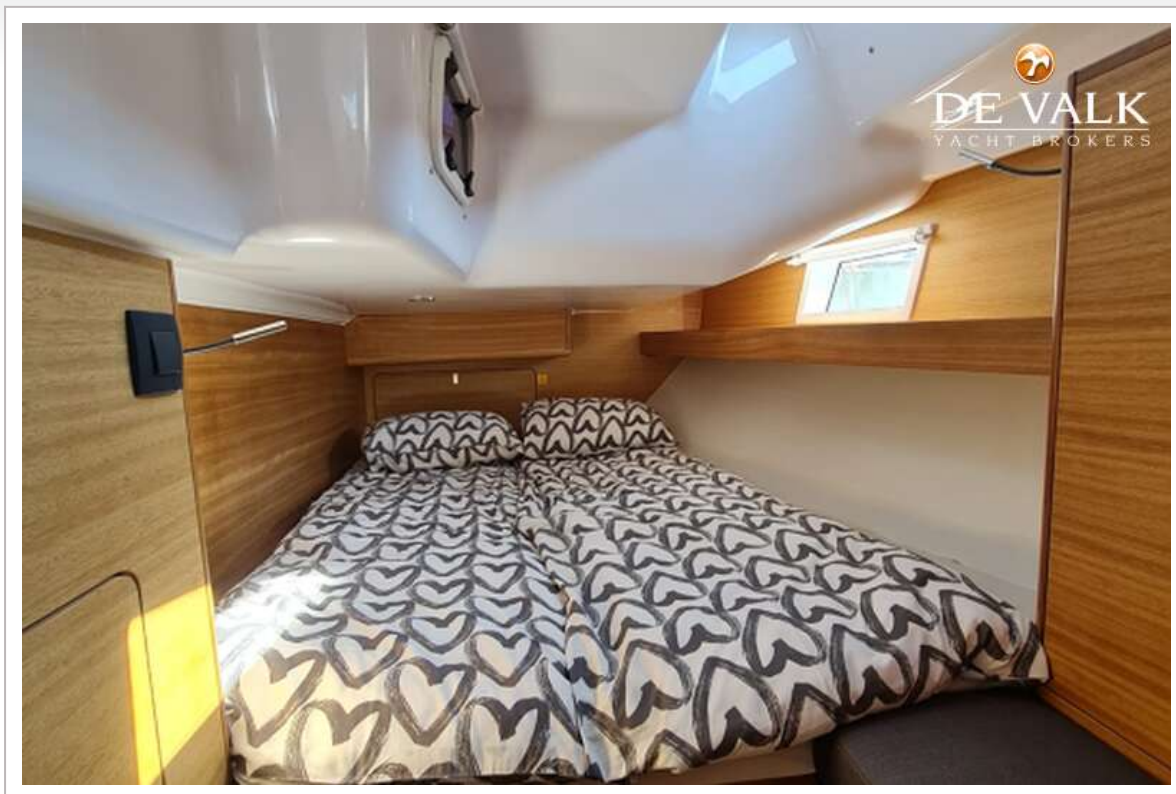
ELAN IMPRESSION 45.1



ELAN IMPRESSION 45.1



ELAN IMPRESSION 45.1



ELAN IMPRESSION 45.1

