



VALK CHALLENGER ROYAL 48 DELUXE



VALK CHALLENGER ROYAL 48 DELUXE

BROKER'S COMMENTS

The Valk Challenger Royal 48 Deluxe "L'amon" is a spacious and comfortable motor yacht, suitable for longer stays on board. In 2022, the yacht underwent an exterior refit with an extended swim platform and a round seating area on the bow. The layout includes a spacious owner's cabin, a forward cabin with a V-bed (convertible to a double bed), and a third cabin with a single bed. The yacht is equipped with double glazing from Topwindows. Technically, "L'amon" has central heating, a DAF diesel engine, CUPA bow thruster, stern thruster (2023), and a recent plotter. Viewings by appointment.

Jochem Heijermans

SPECIFICATIONS

| | | | |
|---------------------|-------------------------|----------------|--------------------------|
| Dimensions | 14.80 x 4.25 x 1.25 (m) | Builder | Japko Shipyards |
| Built | 1993 | Cabins | 3 |
| Material | Steel | Berths | 5 |
| Engine(s) | 1 x DAF DF615 diesel | Hp/Kw | 139.00 (hp), 102.00 (kw) |
| Asking price | € 139.000 (VAT Paid) | Lying | at sales office |

CONTACT

| | | | |
|---------------------|--------------------------|------------------|-------------------|
| Sales office | De Valk Belgium | Telephone | +32 586 80 218 |
| Address | 1401 PT Nieuwpoort BE | E-mail | belgium@devalk.nl |

DISCLAIMER

These particulars are given in good faith as supplied but cannot be guaranteed.



VALK CHALLENGER ROYAL 48 DELUXE

GENERAL

| | |
|-------------------------|--|
| Model | VALK CHALLENGER ROYAL 48 DELUXE |
| Type | motor yacht |
| LOA (m) | 14,80 |
| Beam (m) | 4,25 |
| Draft (m) | 1,25 |
| Year built | 1993 |
| Builder | Japko Shipyards |
| Country | The Netherlands |
| Hull material | steel |
| Hull colour | white |
| Hull shape | hard chine |
| Superstructure material | steel |
| Deck material | steel |
| Deck finish | yes |
| Antifouling (year) | yes |
| Window frame | polymer |
| Window material | double glazing Topwindows |
| Deckhatch | yes |
| Radar arch | collapsible |
| Fuel tank (litre) | stainless steel 1500 |
| Fuel tank 2 (litre) | polyethylene 2x 250l |
| Freshwater tank (litre) | stainless steel 750 |
| Blackwater tank (litre) | stainless steel 750 (not connected) |
| Wheel steering | hydraulic |
| More info on paintwork | Hull repainted (2022) |
| Extra info | Seating area installed on the bow in (2022) |
| Extra info | Swimming platform modified and extended (2022) |

ACCOMMODATION

| | |
|--------|---|
| Cabins | 3 |
|--------|---|



VALK CHALLENGER ROYAL 48 DELUXE

| | |
|-----------------------------|---|
| Berths | 5 |
| Floor | yes |
| Aft deck | yes |
| Saloon | yes |
| Heating | Kabola |
| Aft Cabin | yes |
| Dinette | yes |
| Opening door to aft deck | yes |
| Galley | yes |
| Countertop | wood |
| Sink | stainless steel |
| Cooker | calor gas 4-burner |
| Extractor | yes |
| Microwave/oven combi | Bosch |
| Fridge | yes |
| Hot water system | on central heating |
| Water pressure system | yes |
| Dishwasher | Bosch |
| Owners cabin | yes |
| Wardrobe | yes |
| Bathroom | yes |
| Toilet | shared |
| Toilet system | electric |
| Wash basin | in the bathroom |
| Shower | shared |
| Guest cabin 1 | v-bed Middle section to create a full-size double bed |
| Wardrobe | yes |
| Toilet | shared |
| Toilet system | electric |
| Guest cabin 2 | single bed |
| Washing machine/dryer combi | Beko |



VALK CHALLENGER ROYAL 48 DELUXE

MACHINERY

| | |
|--------------------------|-----------------------------------|
| No of engines | 1 |
| Make | DAF |
| Type | DF615 |
| HP | 139 |
| kW | 102 |
| Fuel | diesel |
| Year installed | 1993 |
| Maximum speed (kn) | 8 |
| Cruising speed (kn) | 6 |
| Consumption (l/hr) | 7 |
| Engine hours | 1710 |
| Drive | shaft |
| Engine controls | manual |
| Gearbox | hydraulic |
| Bowthruster | electric Cupa |
| Sternthruster | electric Vetus (2023) |
| Propeller type | fixed |
| Electric bilge pump | yes |
| Electrical installation | 24/230V |
| Generator | yes |
| Batteries | yes |
| Battery charger/inverter | Victron Multiplus 24V/5000W/120Ah |
| Solar panel | yes |
| Shorepower | with cable |

NAVIGATION

| | |
|-------------------|--------------------------|
| Compass | Plastimo |
| Depth sounder/log | On Simrad Plotter (2024) |
| Log | Vetus combi-3 |
| VHF | B&G (2024) |



VALK CHALLENGER ROYAL 48 DELUXE

| | |
|-------------------|---------------|
| Plotter/GPS | Simrad (2024) |
| Navigation lights | yes |

EQUIPMENT

| | |
|-----------------------|---------------------------|
| Sprayhood | yes |
| Cockpit cover | (2025) |
| Cockpit cushions | yes |
| Cockpit table | yes |
| Cockpit chairs | yes |
| Bathing platform | Extended in (2022) |
| Boarding ladder | stainless steel |
| Anchor | yes |
| Anchor chain | yes |
| Windlass | manual Lofrance |
| Davits | stainless steel |
| Sea railing | yes |
| Wiper | yes |
| Fenders | yes |
| Mooring lines | yes |
| TV | Panasonic (electric lift) |
| Radio | Fusion (2024) |
| Surround Sound System | Bose |
| Sub-woofer | yes |
| Cockpit speakers | yes |
| Speakers in salon | yes |



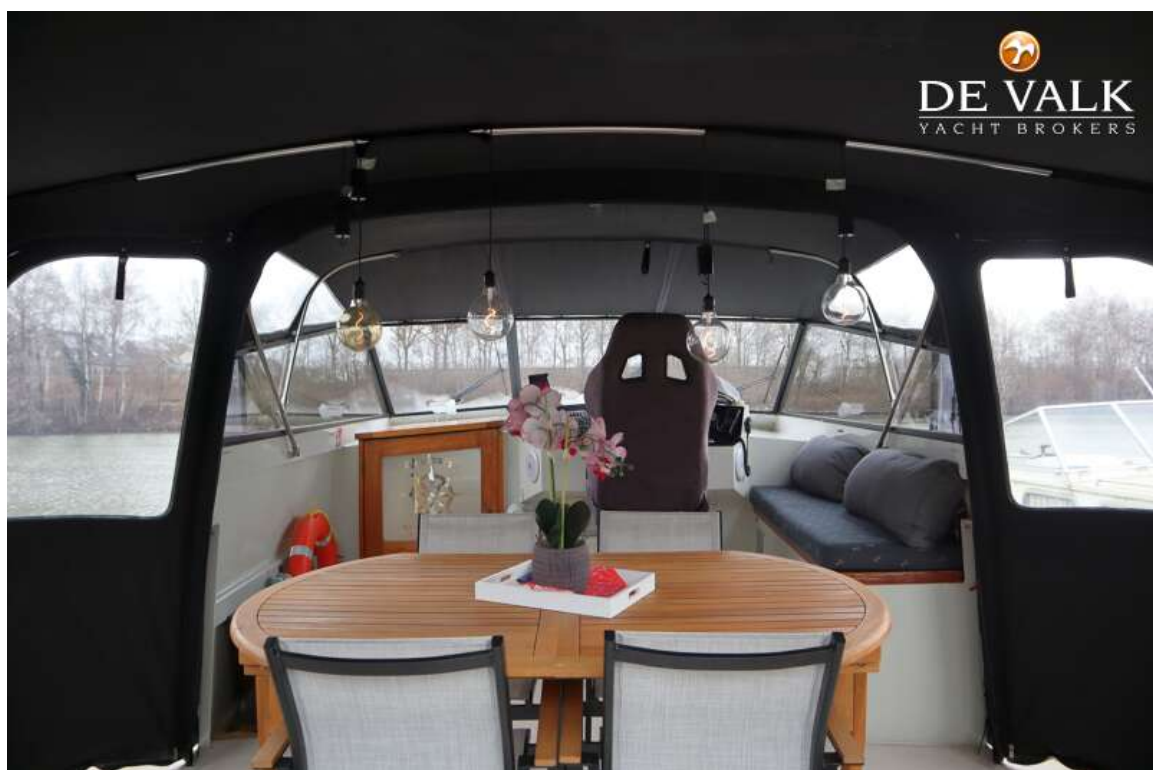
VALK CHALLENGER ROYAL 48 DELUXE



VALK CHALLENGER ROYAL 48 DELUXE



VALK CHALLENGER ROYAL 48 DELUXE



VALK CHALLENGER ROYAL 48 DELUXE



VALK CHALLENGER ROYAL 48 DELUXE



VALK CHALLENGER ROYAL 48 DELUXE



VALK CHALLENGER ROYAL 48 DELUXE



VALK CHALLENGER ROYAL 48 DELUXE



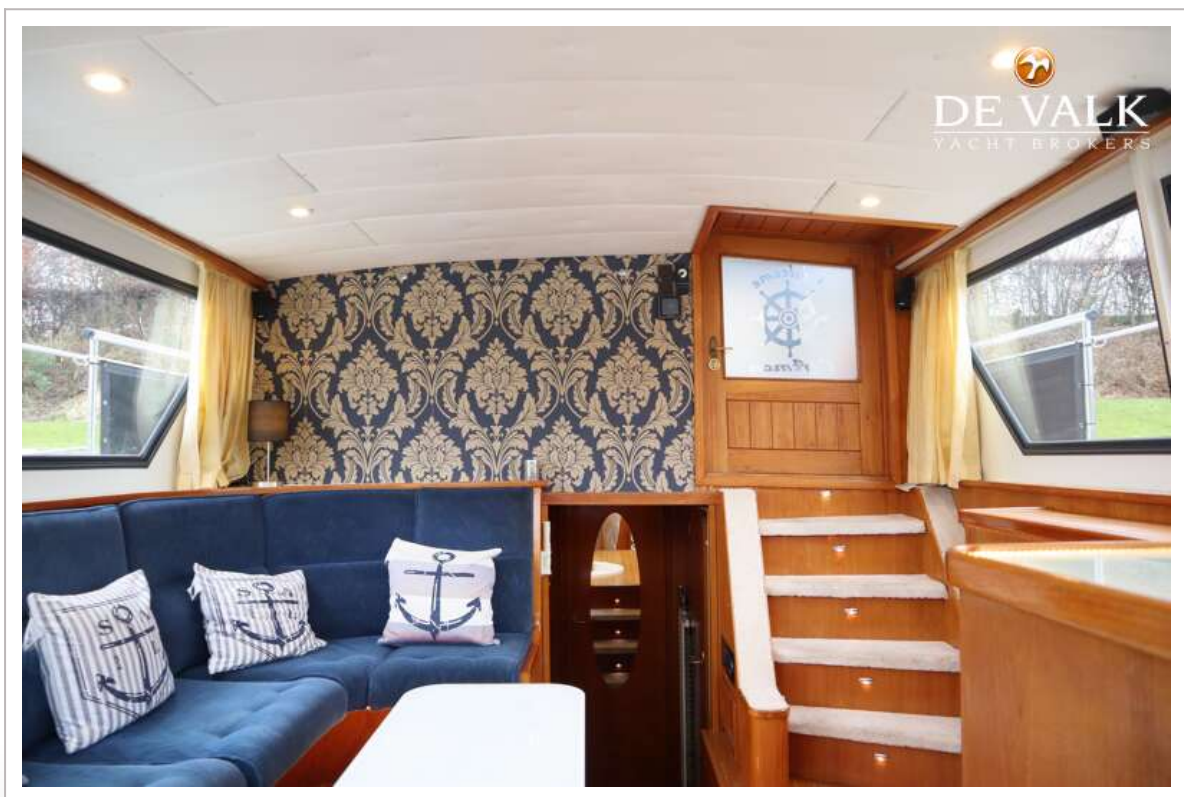
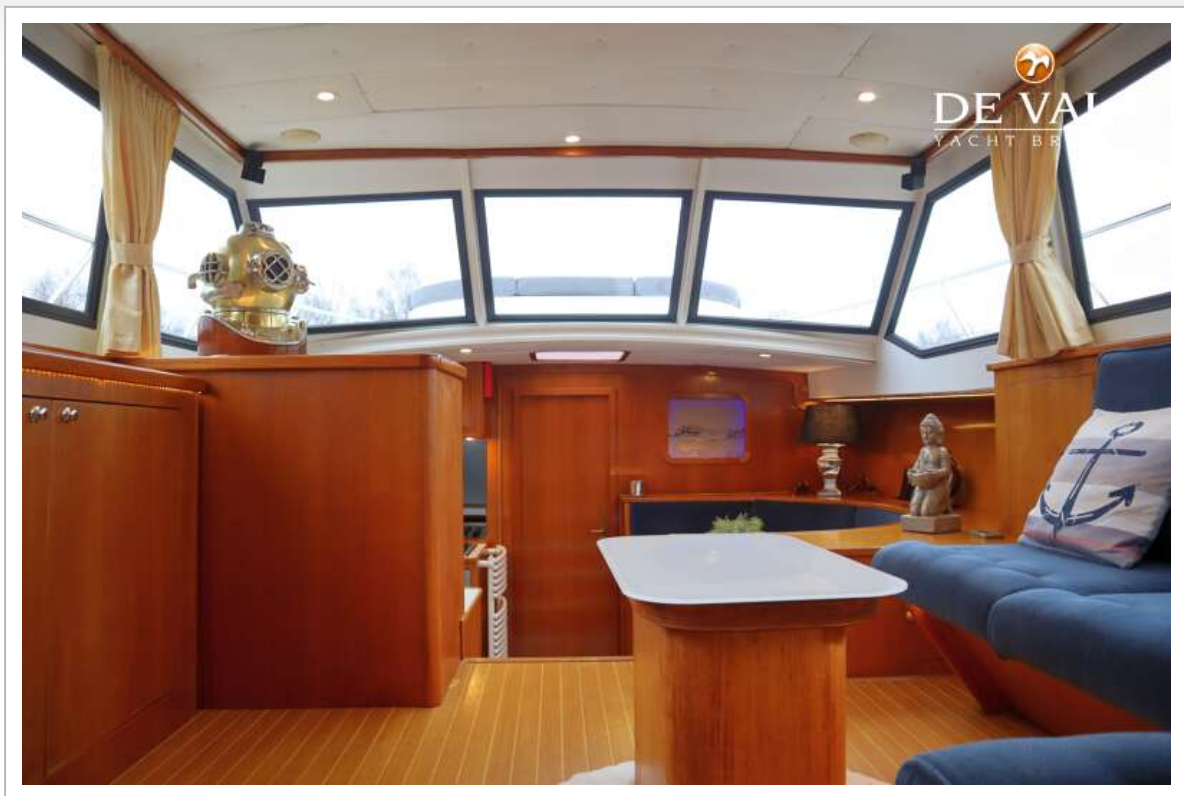
VALK CHALLENGER ROYAL 48 DELUXE



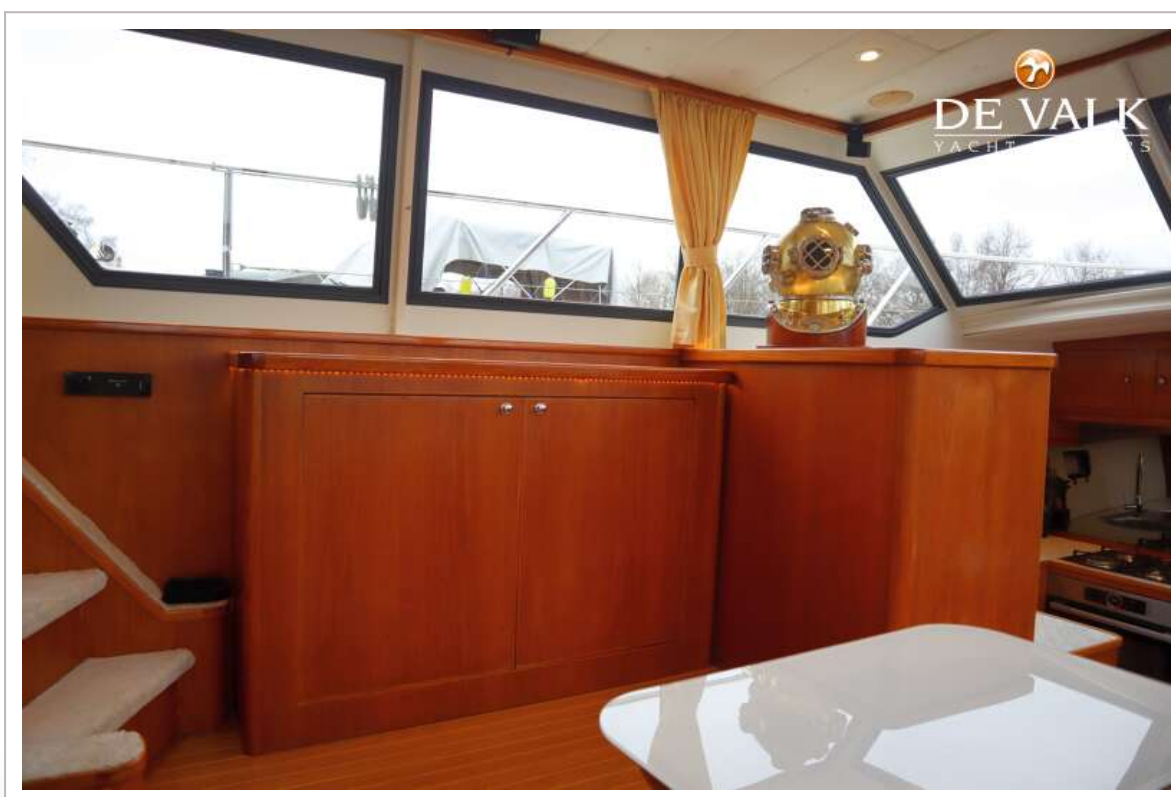
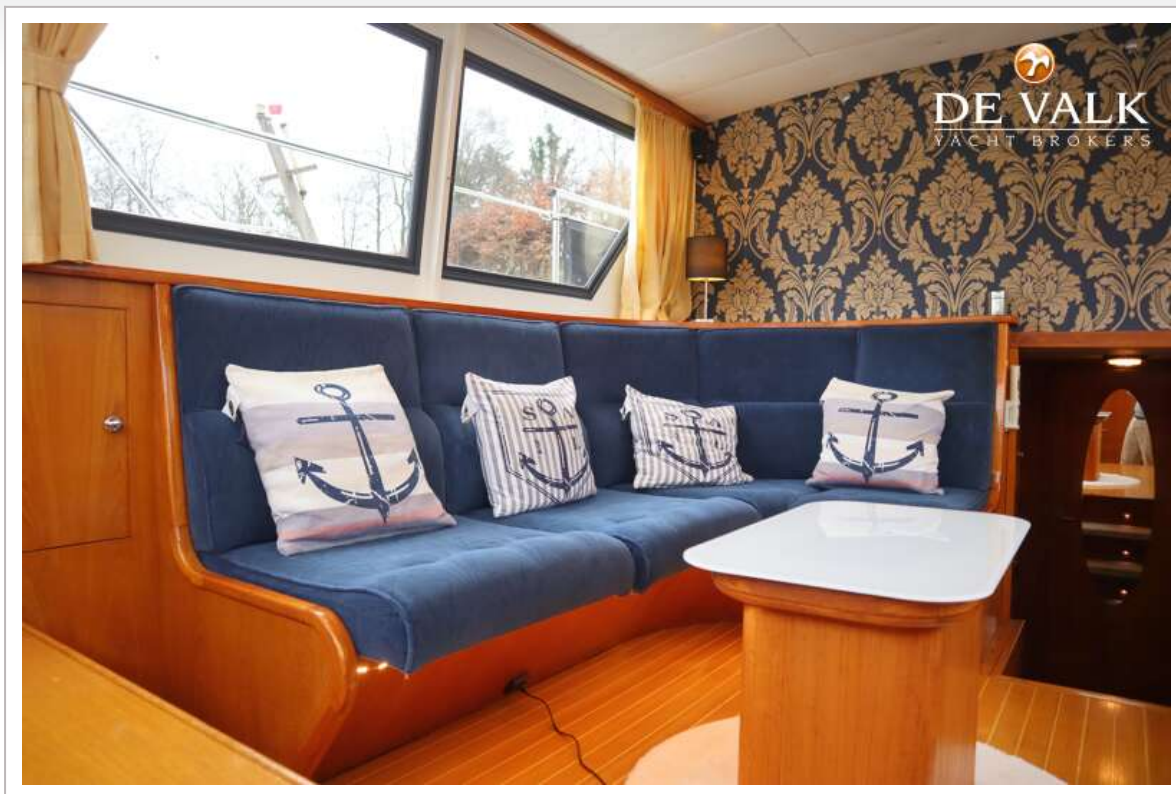
VALK CHALLENGER ROYAL 48 DELUXE



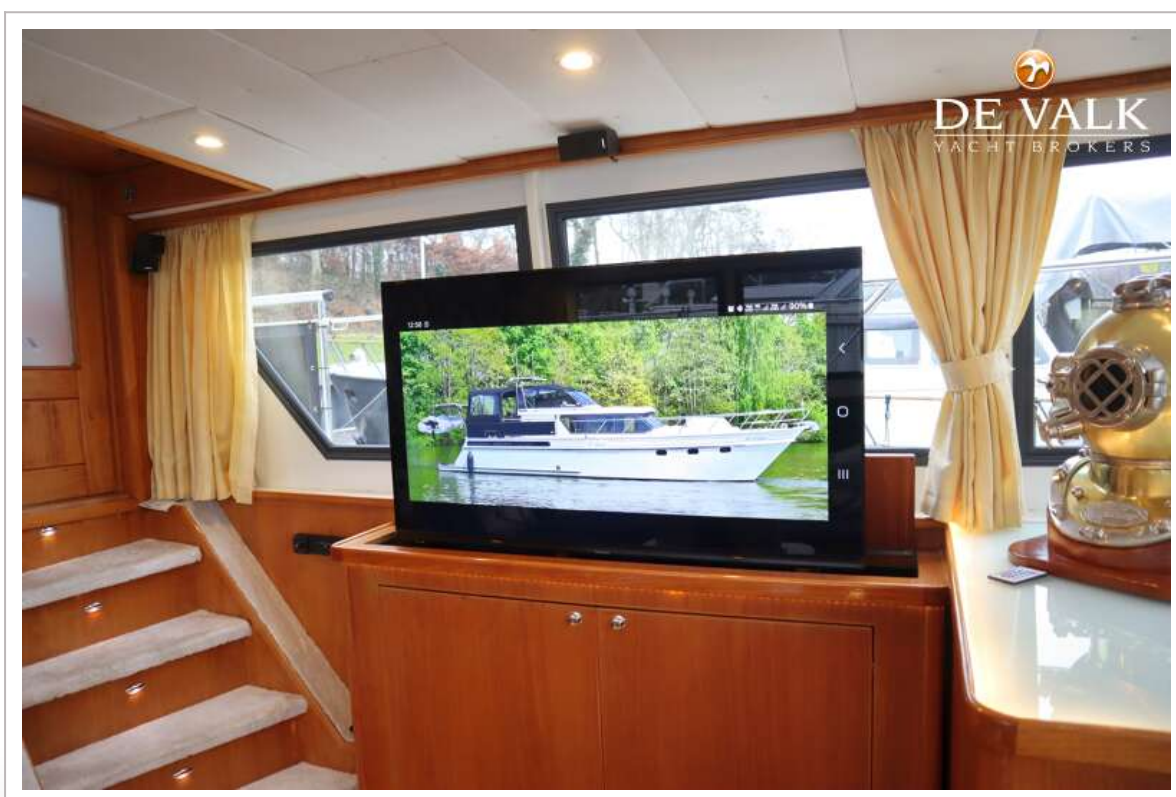
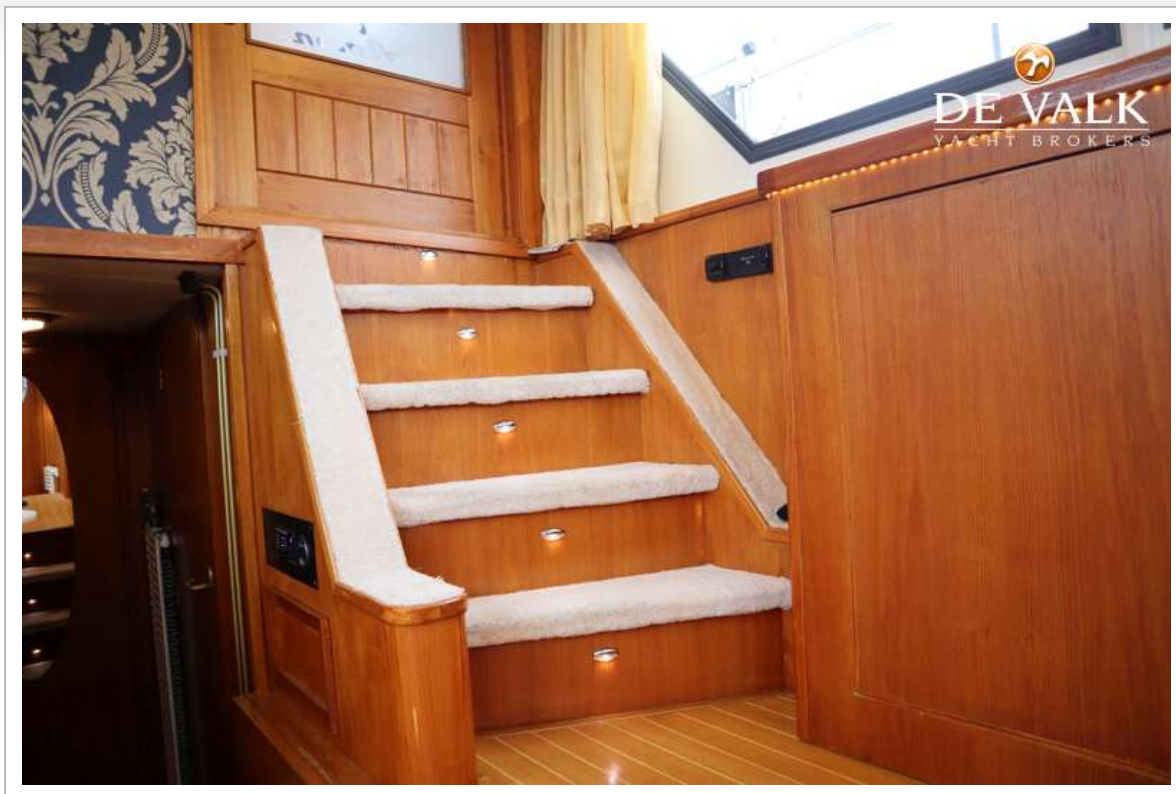
VALK CHALLENGER ROYAL 48 DELUXE



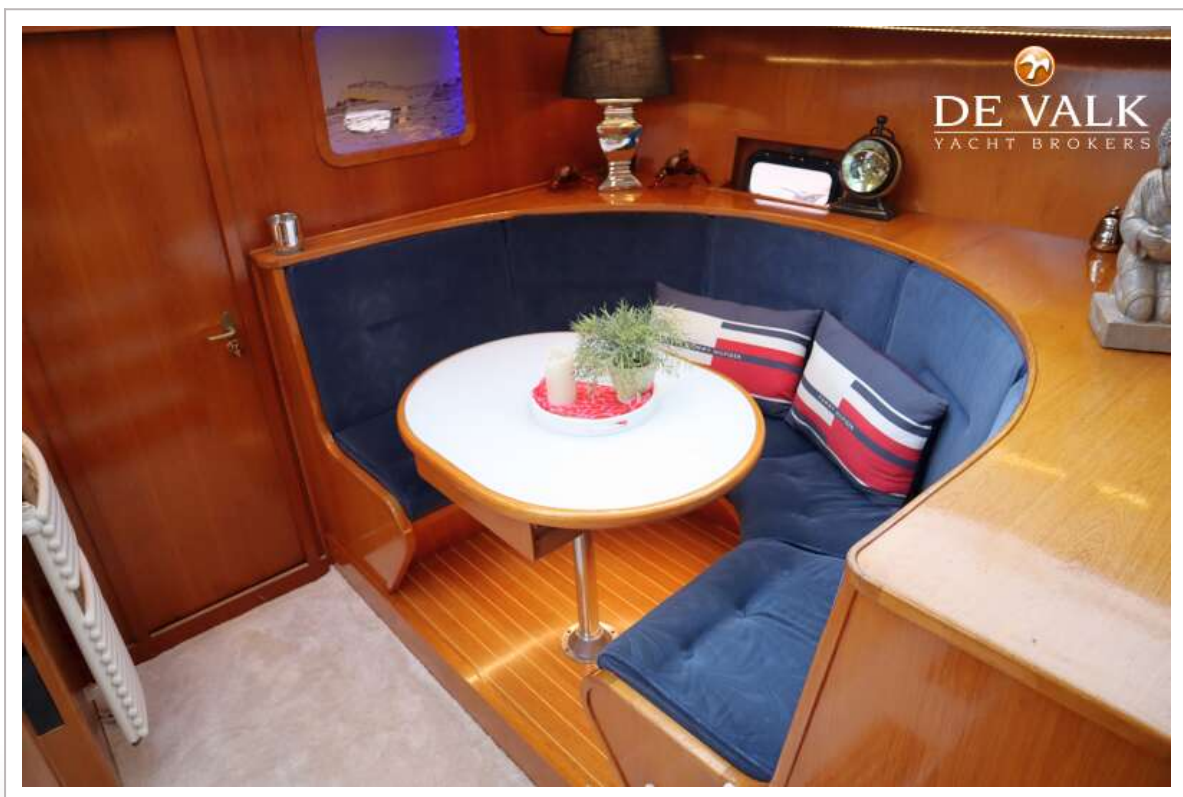
VALK CHALLENGER ROYAL 48 DELUXE



VALK CHALLENGER ROYAL 48 DELUXE



VALK CHALLENGER ROYAL 48 DELUXE



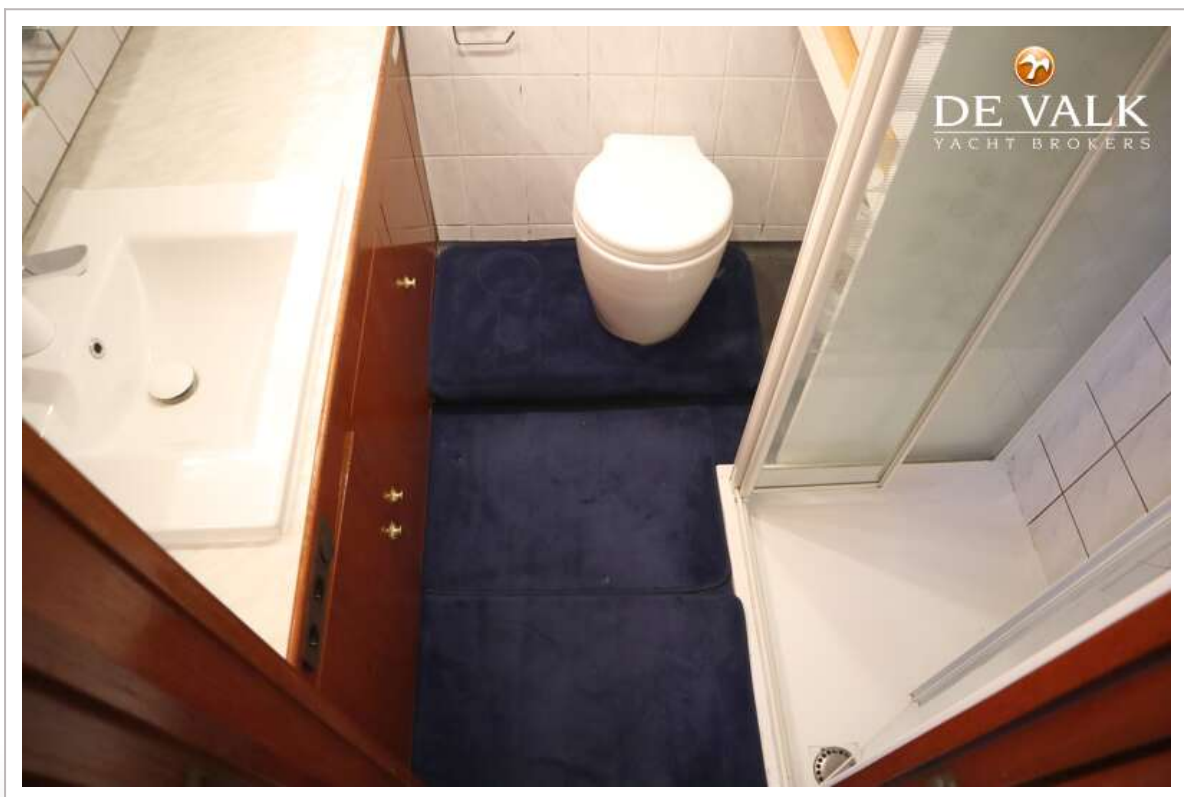
VALK CHALLENGER ROYAL 48 DELUXE



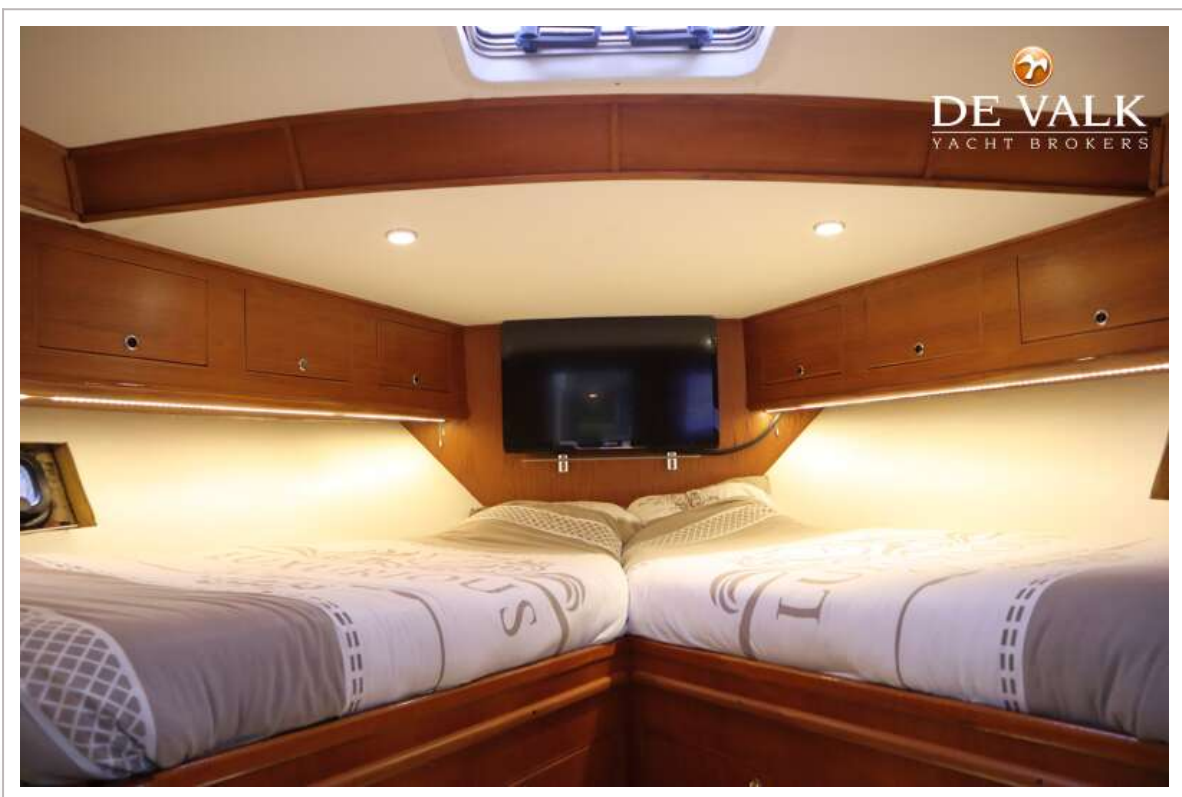
VALK CHALLENGER ROYAL 48 DELUXE



VALK CHALLENGER ROYAL 48 DELUXE



VALK CHALLENGER ROYAL 48 DELUXE



VALK CHALLENGER ROYAL 48 DELUXE



VALK CHALLENGER ROYAL 48 DELUXE

