



DE VALK
YACHT BROKERS



VALK CHALLENGER ROYAL 48



DE VALK
YACHT BROKERS

VALK CHALLENGER ROYAL 48

BROKER'S COMMENTS

The Valk Challenger Royal 48 Deluxe "L'amon" is a spacious and comfortable motor yacht, suitable for longer stays on board. In 2022, the yacht underwent an exterior refit with an extended swim platform and a round seating area on the bow. The layout includes a spacious owner's cabin, a forward cabin with a V-bed (convertible to a double bed), and a third cabin with a single bed. The yacht is equipped with double glazing from Topwindows. Technically, "L'amon" has central heating, a DAF diesel engine, CUPA bow thruster, stern thruster (2023), and a recent plotter. Viewings by appointment.

Jochem Heijermans

SPECIFICATIONS

Dimensions	14.80 x 4.25 x 1.25 (m)	Builder	Japko Shipyards
Built	1993	Cabins	3
Material	Steel	Berths	5
Engine(s)	1 x DAF DF615 diesel	Hp/Kw	139.00 (hp), 102.00 (kw)
Asking price	€ 139.000 (VAT Paid)	Lying	elsewhere / Not at sales office

CONTACT

Sales office	De Valk Belgium	Telephone	+32 586 80 218
Address	1401 PT Nieuwpoort BE	E-mail	belgium@devalk.nl

DISCLAIMER

These particulars are given in good faith as supplied but cannot be guaranteed.



VALK CHALLENGER ROYAL 48

GENERAL

Model	VALK CHALLENGER ROYAL 48
Type	motor yacht
LOA (m)	14,80
Beam (m)	4,25
Draft (m)	1,25
Air draft (m)	5,25
Air draft min (m)	2,90
Year built	1993
Builder	Japko Shipyards
Country	The Netherlands
Displacement (t)	20
Hull material	steel
Hull colour	white Two-component paint (2023)
Hull shape	hard chine
Superstructure material	steel
Deck material	steel
Deck finish	Anti-slip, repainted in 2026
Antifouling (year)	2023
Window frame	polymer
Window material	double glazing Topwindows
Deckhatch	yes
Radar arch	collapsible
Fuel tank (litre)	steel 1100
Fuel tank 2 (litre)	polyethylene 2x 140
Freshwater tank (litre)	stainless steel 2x 500
Blackwater tank (litre)	stainless steel 500 if one of the two water tanks is disconnected
Wheel steering	hydraulic
Extra info	Seating area installed on the bow in (2023)
Extra info	Swimming platform modified and extended (2023)



VALK CHALLENGER ROYAL 48

ACCOMMODATION

Cabins	3
Berths	5
Floor	yes
Aft deck	yes
Saloon	yes
Heating	Kabola
Aft Cabin	yes
Dinette	yes
Opening door to aft deck	yes
Galley	yes
Countertop	wood
Sink	stainless steel
Cooker	calor gas 4-burner
Extractor	yes
Microwave/oven combi	Bosch
Fridge	yes
Hot water system	on central heating
Water pressure system	yes
Dishwasher	Bosch
Owners cabin	yes
Wardrobe	yes
Bathroom	yes
Toilet	shared
Toilet system	electric
Wash basin	in the bathroom
Shower	shared
Guest cabin 1	v-bed Middle section to create a full-size double bed
Wardrobe	yes
Toilet	shared
Toilet system	electric



VALK CHALLENGER ROYAL 48

Guest cabin 2	single bed
Washing machine/dryer combi	Beko

MACHINERY

No of engines	1
Make	DAF
Type	DF615
HP	139
kW	102
Fuel	diesel
Year installed	1993
Maximum speed (kn)	8
Cruising speed (kn)	6
Consumption (l/hr)	6
Engine hours	2550
Engine cooling system	freshwater heat exchanger
Drive	shaft
Engine controls	manual
Gearbox	hydraulic
Bowthruster	electric Cupa
Sternthruster	electric Vetus (2023)
Propeller type	fixed
Electric bilge pump	yes
Electrical installation	12/24/230V
Batteries	yes
Battery charger/inverter	Victron Multiplus 24V/5000W/120Ah
Solar panel	1020W
Shorepower	with cable
Extra info	Shaft renewed (2023)
Extra info	Propeller balanced (2023)



VALK CHALLENGER ROYAL 48

NAVIGATION

Compass	Plastimo
Depth sounder/log	On Simrad Plotter (2024)
Log	On Simrad Plotter (2023)
VHF	B&G (2024)
Plotter/GPS	Simrad (2024)
AIS transponder	(2024)
Navigation lights	yes

EQUIPMENT

Sprayhood	yes
Cockpit cover	(2025)
Cockpit cushions	yes
Cockpit table	yes
Cockpit chairs	yes
Bathing platform	Extended in (2023)
Boarding ladder	stainless steel
Anchor	yes
Anchor chain	yes
Windlass	manual Lofrance
Davits	stainless steel
Sea railing	yes
Wiper	yes
Fenders	yes
Mooring lines	yes
TV	Panasonic (electric lift)
Radio	Fusion (2024)
Surround Sound System	Bose
Sub-woofer	yes
Cockpit speakers	yes
Speakers in salon	yes





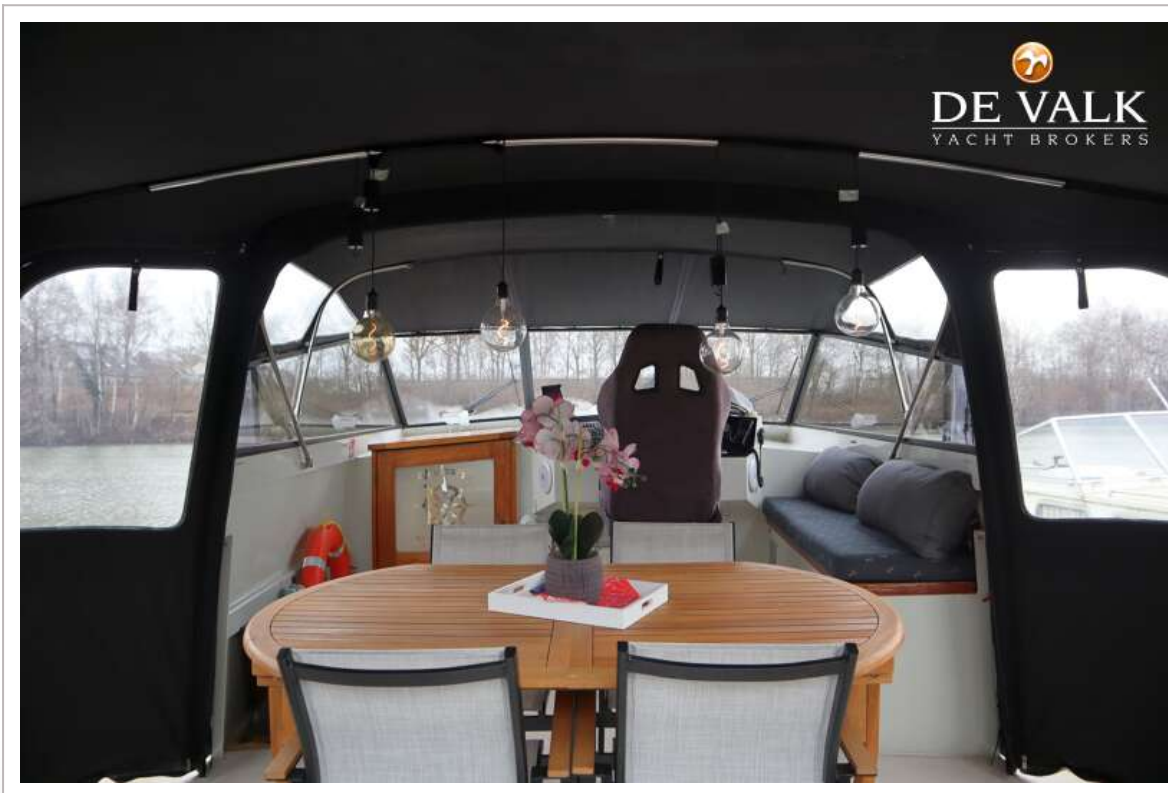
VALK CHALLENGER ROYAL 48



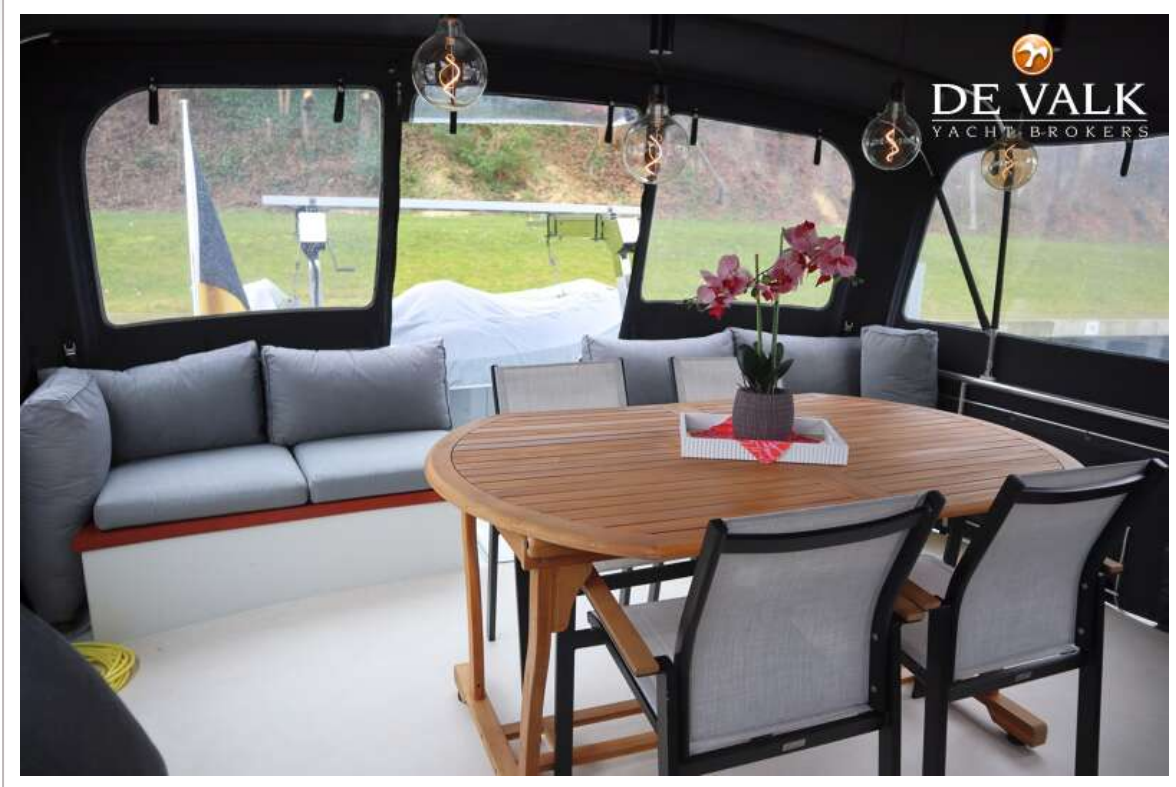
VALK CHALLENGER ROYAL 48



VALK CHALLENGER ROYAL 48



VALK CHALLENGER ROYAL 48



VALK CHALLENGER ROYAL 48



VALK CHALLENGER ROYAL 48



VALK CHALLENGER ROYAL 48



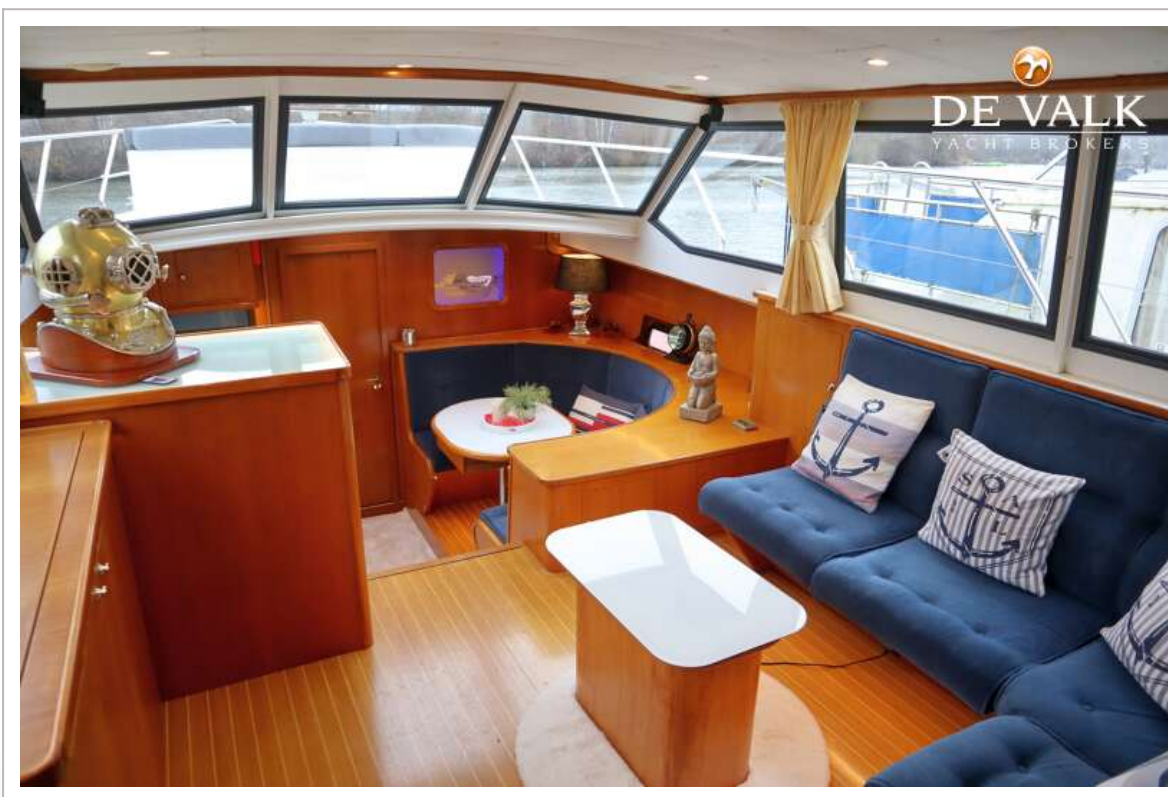
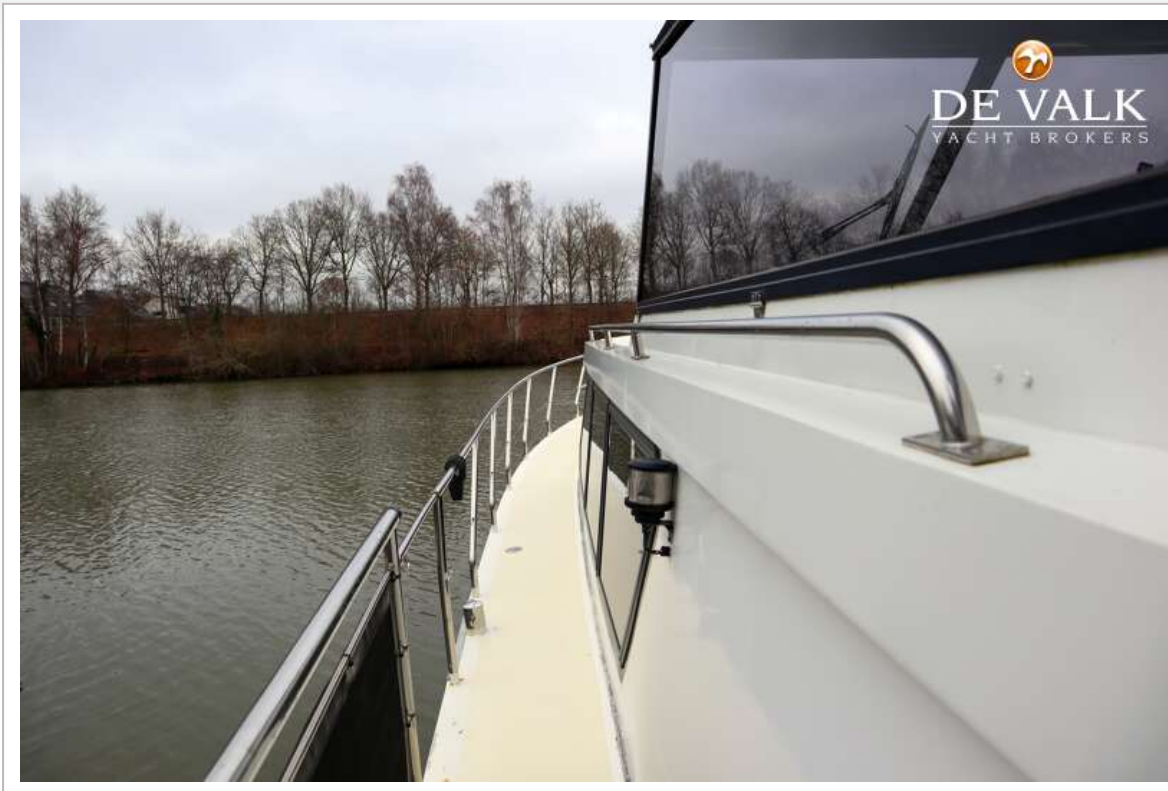
VALK CHALLENGER ROYAL 48



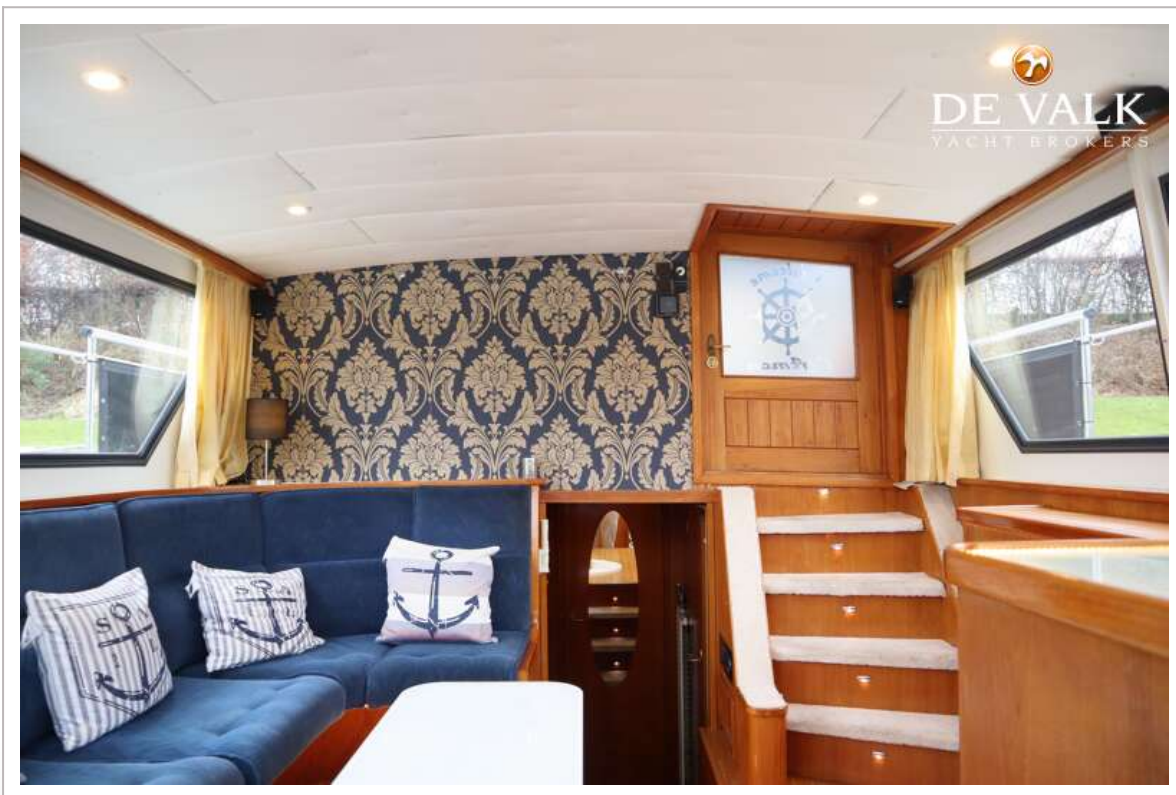
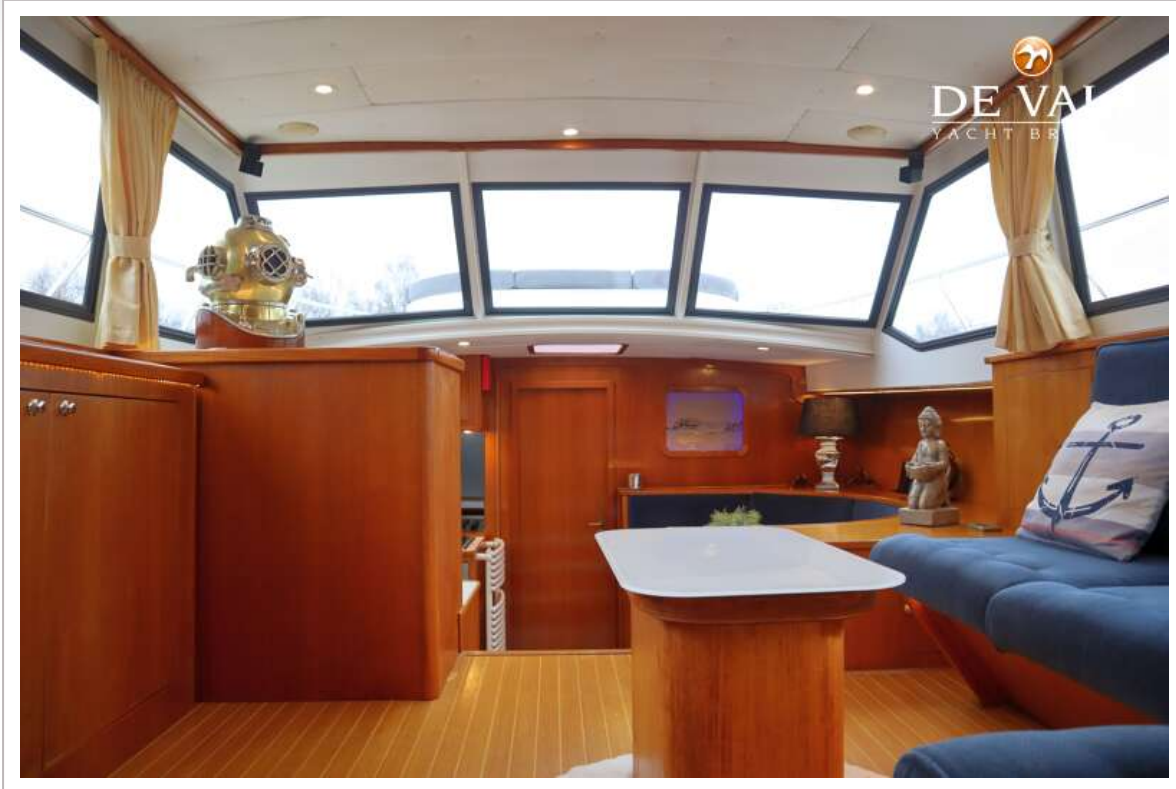
VALK CHALLENGER ROYAL 48



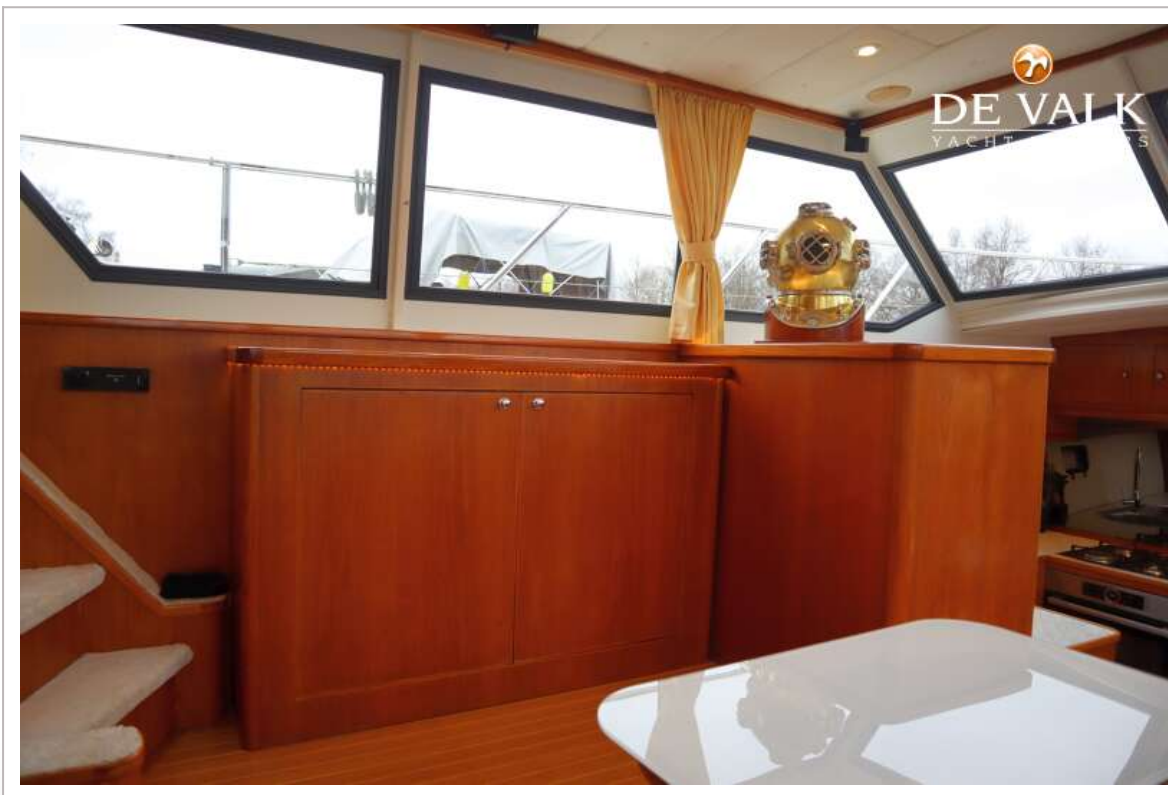
VALK CHALLENGER ROYAL 48



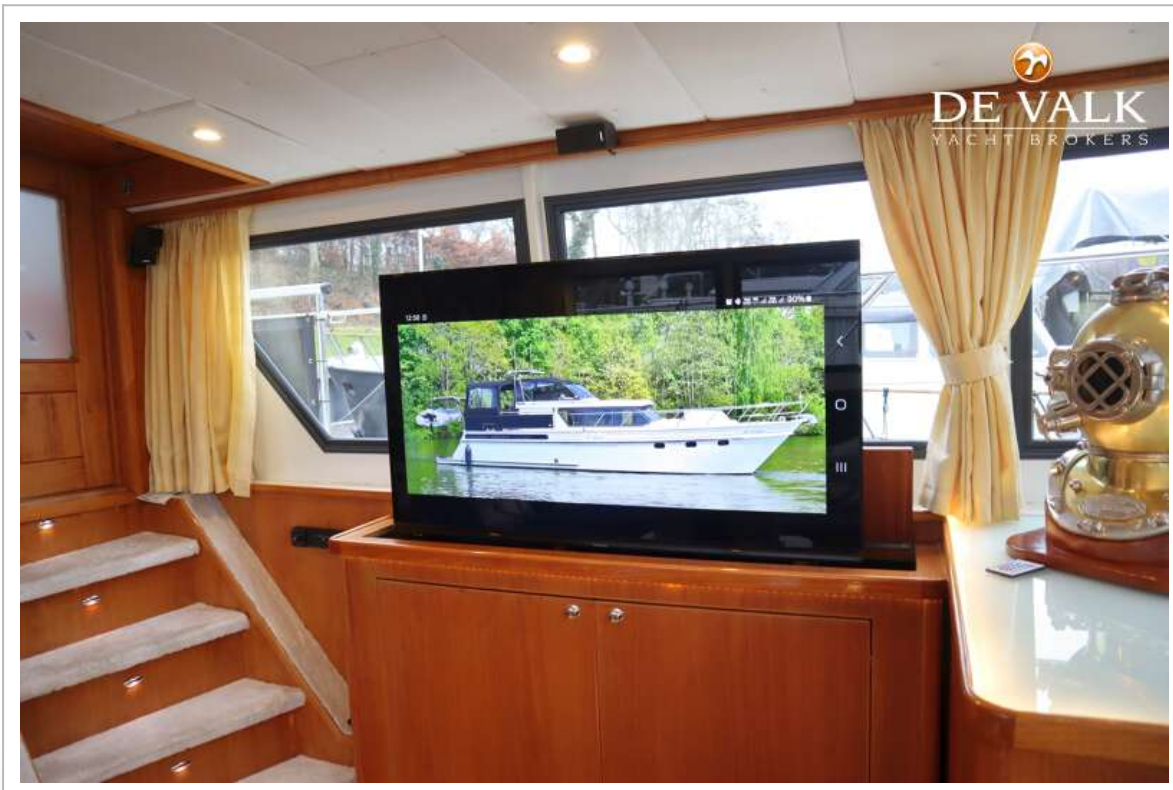
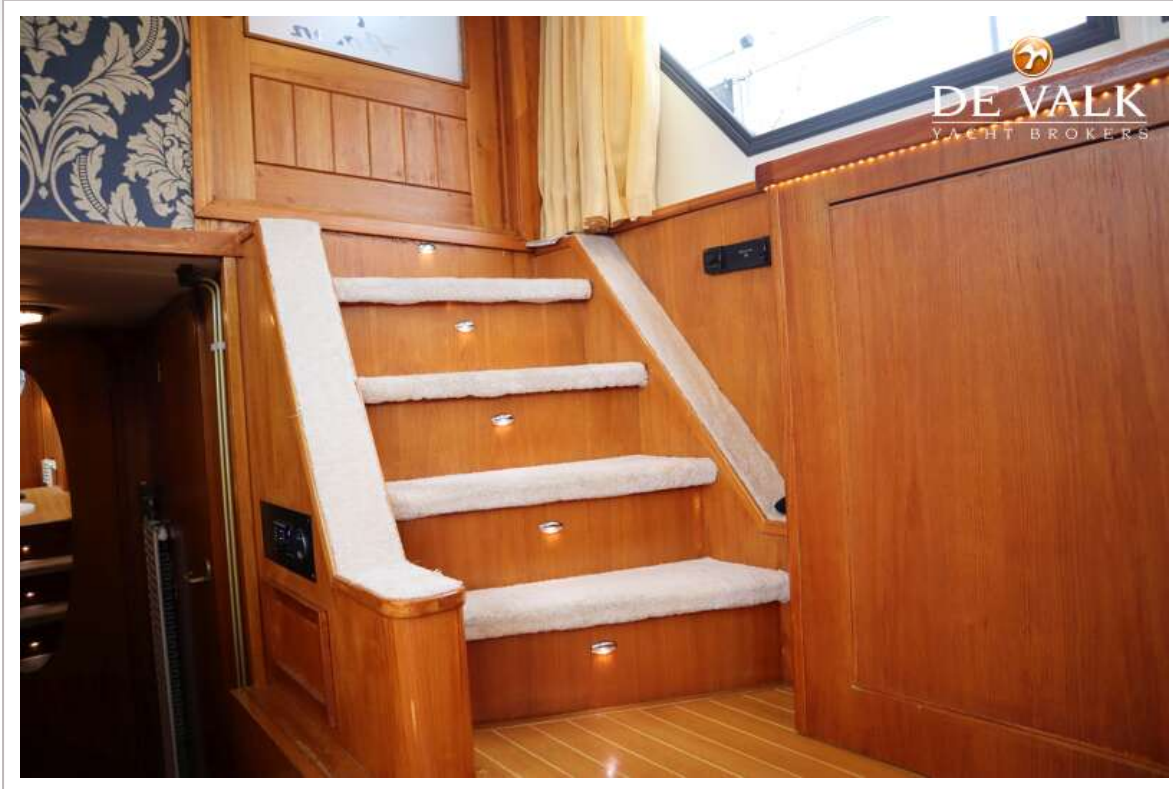
VALK CHALLENGER ROYAL 48



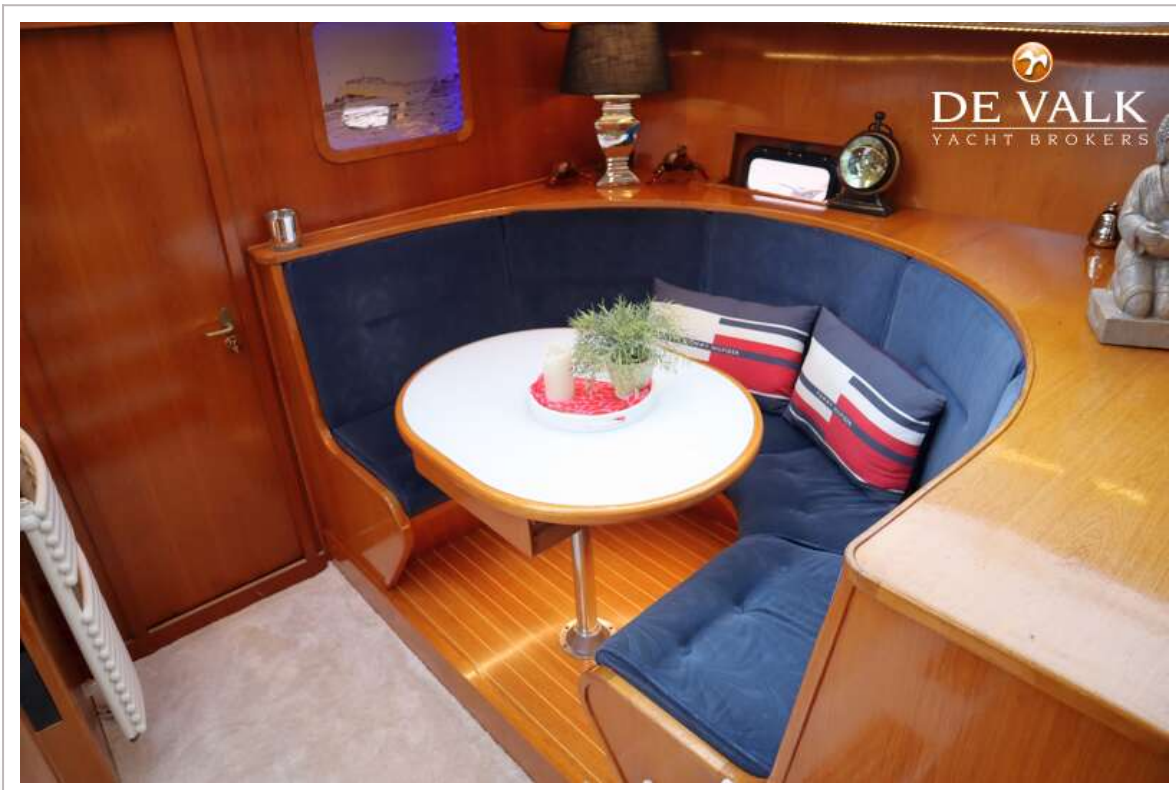
VALK CHALLENGER ROYAL 48



VALK CHALLENGER ROYAL 48



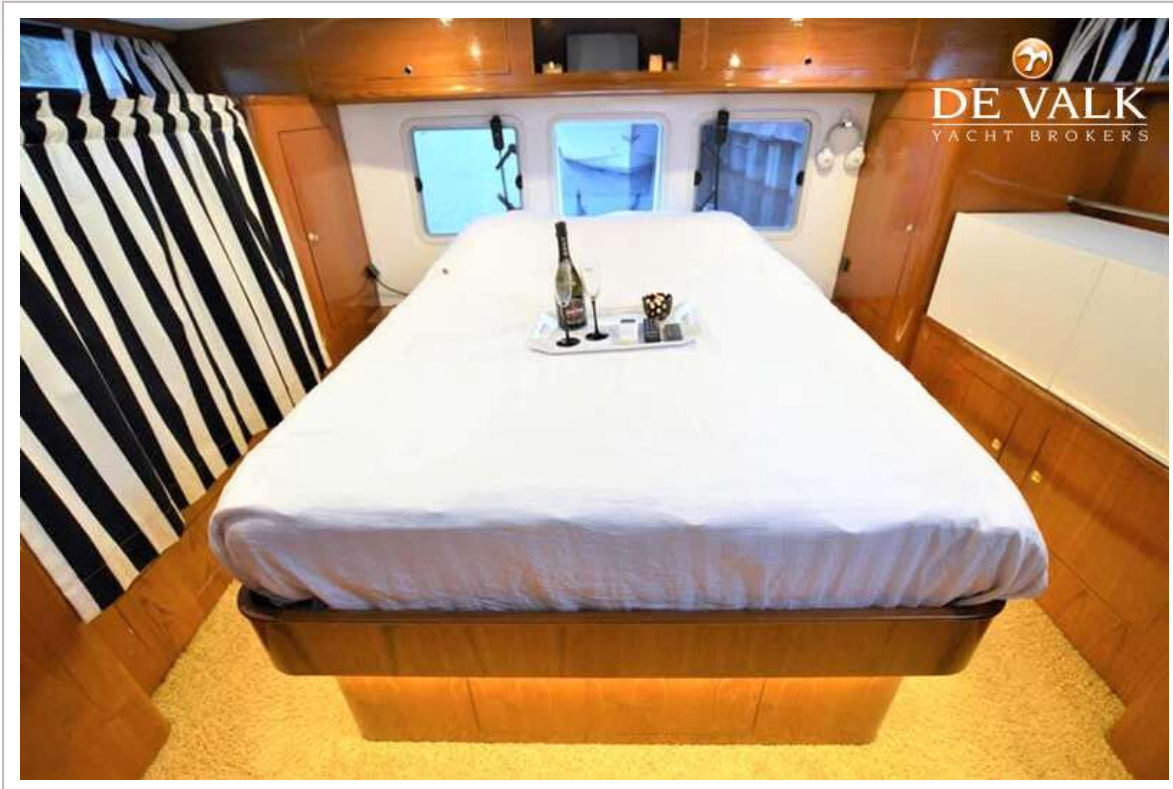
VALK CHALLENGER ROYAL 48



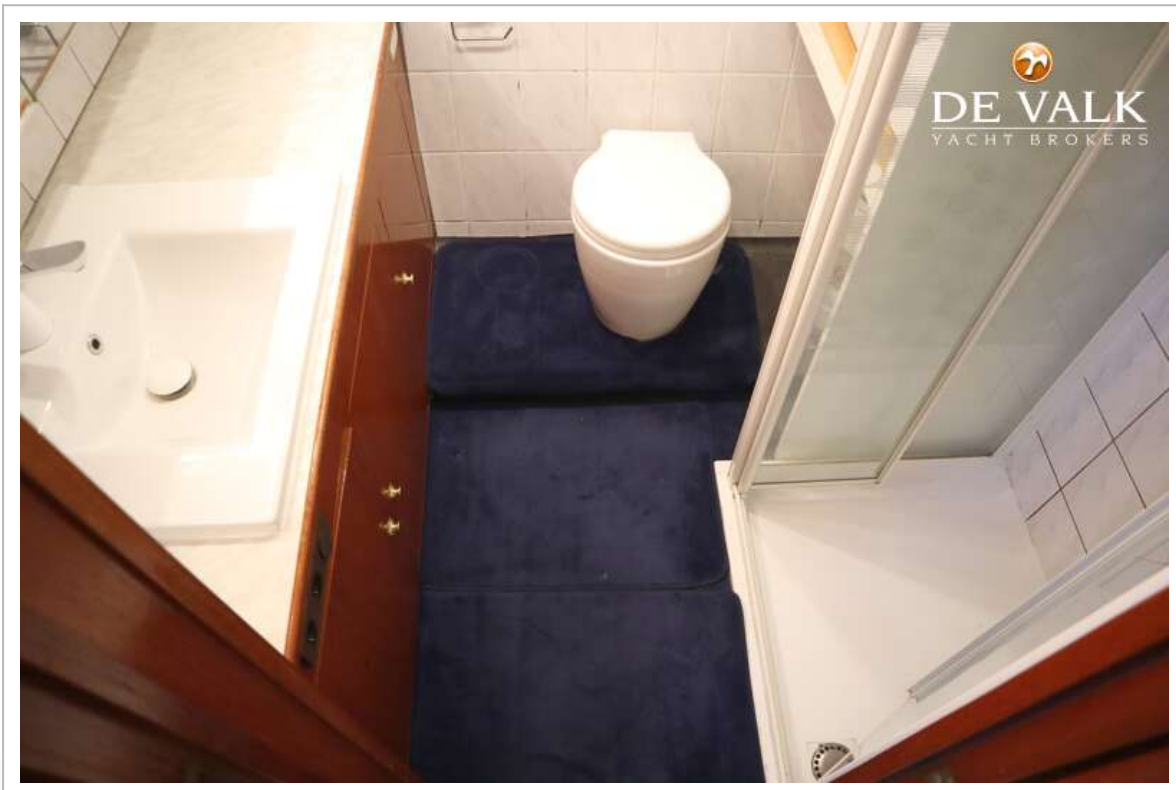
VALK CHALLENGER ROYAL 48



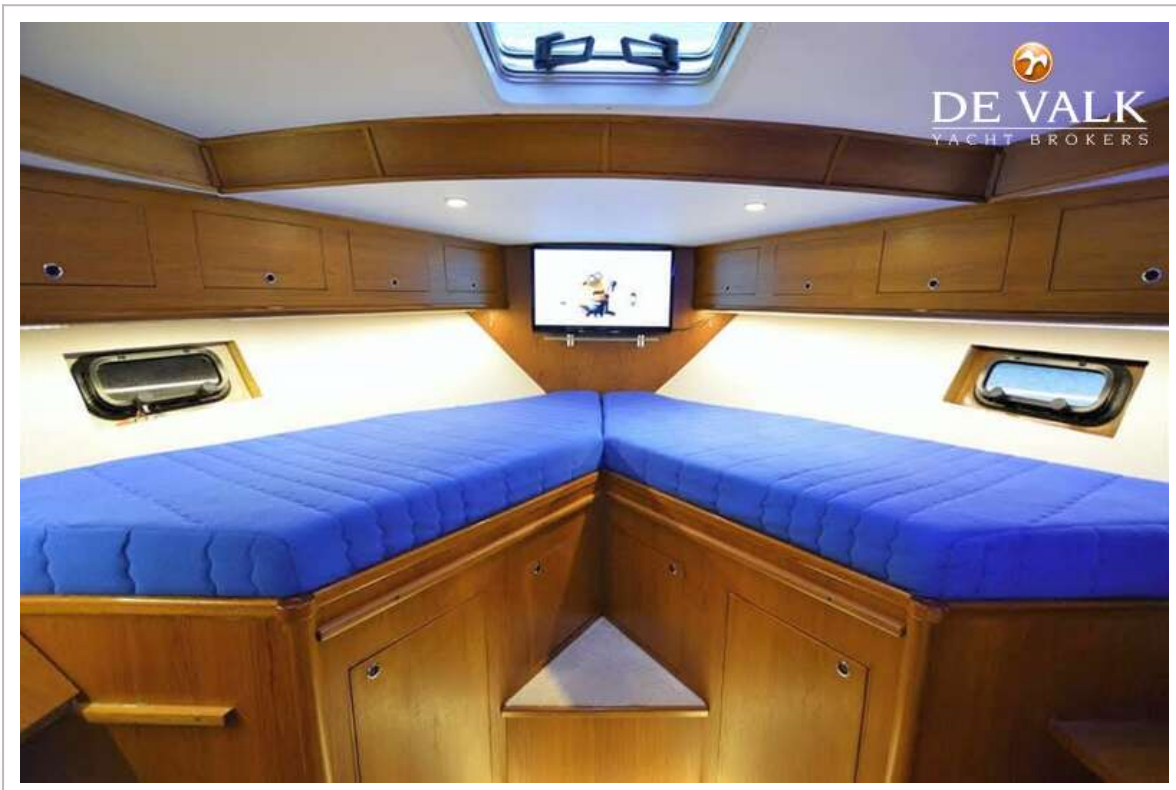
VALK CHALLENGER ROYAL 48



VALK CHALLENGER ROYAL 48



VALK CHALLENGER ROYAL 48



VALK CHALLENGER ROYAL 48



VALK CHALLENGER ROYAL 48

