



JEANNEAU SUN ODYSSEY 321

JEANNEAU SUN ODYSSEY 32I

BROKER'S COMMENTS

The Jeanneau Sun Odyssey 32i is a popular, compact cruiser known for maximizing interior volume, offering a bright, modern, and comfortable 2-cabin layout for its size. It is lauded for being nimble, stable, and easy to handle, making it a great choice for families or short-handed sailing. The 32i is well known for her speed and comfort at sea with her single wheel steering. Available in South Spain.

Jörg Hellmich

SPECIFICATIONS

Dimensions	9.60 x 3.30 x 2.00 (m)	Builder	Jeanneau
Built	2008	Cabins	2
Material	GRP	Berths	6
Engine(s)	1 x Yanmar 3YM20 diesel	Hp/Kw	21.00 (hp), 15.46 (kw)
Asking price	€ 45.000 (VAT UK VAT Paid)	Lying	at sales office

CONTACT

Sales office	De Valk Almeria	Telephone	+34 950 497 825
Address	Puerto Deportivo, Darsena de la Batea 42 04711 Almerimar ES	E-mail	almeria@devalk.nl

DISCLAIMER

These particulars are given in good faith as supplied but cannot be guaranteed.



JEANNEAU SUN ODYSSEY 32I

GENERAL

Model	JEANNEAU SUN ODYSSEY 32I
Type	sailing yacht
LOA (m)	9,60
LWL (m)	8,52
Beam (m)	3,30
Draft (m)	2,00
Air draft (m)	14,20
Headroom (m)	1,90
Year built	2008
Builder	Jeanneau
Country	France
Designer	Phillip Briand
Displacement (t)	4,3
Ballast (tonnes)	cast iron and lead 1,13
CE norm	B
Hull material	GRP
Hull colour	white
Hull shape	round-bilged
Keel type	fin keel with bulb
Superstructure material	GRP
Deck material	GRP
Deck finish	non-skid moulded in
Superstructure deck finish	non-skid moulded in
Cockpit deck finish	teak
Window frame	aluminium
Window material	perspex
Deckhatch	Lewmar
Portholes	aluminium
Fuel tank (litre)	polyethylene 70
Freshwater tank (litre)	polyethylene 170



Blackwater tank (litre)	polyethylene
Blackwater tank extraction	pump
Wheel steering	cable steering Single wheel
Emergency tiller	yes
More info on hull	No damages or scratches visible

ACCOMMODATION

Cabins	2
Berths	6
Interior	Paso Jaguar / Nova Blue Yellow upholstery
Layout	2 cabins
Floor	wood
Saloon	yes
Headroom saloon (m)	1,90
Chart table	yes
Aft Cabin	yes
Convertible berth	In saloon
Galley	U-shape
Countertop	corian
Sink	stainless steel Single
Cooker	calor gas Eno (2 burner) + electr. hob
Oven	Eno
Fridge	Frigoboat
Freezer	Compartment in fridge
Hot water system	220V + engine Quick 25 RX Boiler
Water pressure system	electrical Flowjet R4305
Hot water tap	yes
Crockery	yes
Owners cabin	double bed Aft Cabin
Bed length (m)	2,00
Wardrobe	hanging and shelves



Toilet	shared
Toilet system	manual Jabsco
Wash basin	at the toilet
Shower	shared
Guest cabin 1	v-bed FW cabin
Bed length (m)	1,95
Wardrobe	hanging and shelves

MACHINERY

No of engines	1
Make	Yanmar
Type	3YM20
HP	21
kW	15.46
Fuel	diesel
Year installed	2007
Maximum speed (kn)	7
Cruising speed (kn)	5
Consumption (l/hr)	2,5
Range (nm)	150
Engine hours	418
Engine cooling system	freshwater heat exchanger
Drive	shaft
Shaft seal	Volvo (2016)
Engine controls	bowden cable
Gearbox	mechanical
Gearbox	mechanical
Exhaust	watercooled
Propeller type	fixed
Propeller blades	2
Propeller shaft material	stainless steel



Shaft lubrication	water
Manual bilge pump	yes
Electric bilge pump	yes
Start battery	12V / 62 Ah AGM
Service battery	12V / 62 Ah Acid
Battery monitor	Gauge
Battery charger	Cristec
Shorepower	with cable 230V
Extra info	Cutlass bearing (2016)

NAVIGATION

Compass	Plastimo
Multi control display	Raymarine ST60 Tridata
Depth sounder/log	Raymarine ST60 Tridata
Windset	Raymarine ST60
VHF	Raymarine Ray 54E
VHF handheld	yes
Autopilot	Raymarine ST6002 Wheelplot
Plotter/GPS	Raymarine 435 colour
Navtex	Furuno NX300
Navigation lights	yes

EQUIPMENT

Sprayhood	yes
Bimini	yes
Cockpit table	yes
Bathing platform	yes
Boarding ladder	stainless steel
Deck shower	H&c
Anchor	Delta
Anchor chain	30m



Windlass	electrical High Performance
Dinghy	inflatable 2,2m
Outboard	Honda 2,2 HP
Outboard support	yes
Sea railing	wire
Grab rail (superstructure)	stainless steel
Pushpit	yes
Pulpit	yes
Lifejackets	yes
Safety harness	yes
Fenders	yes
Mooring lines	yes
TV	Telefunken LCD
Radio-cd player	yes
DVD player	yes
Speakers in salon	VDO
Clock - barometer	yes
Fire extinguisher	yes

RIGGING

Rigging	sloop
Standing rigging	wire Original
Brand mast	Sparcraft
Material mast	aluminium
Spreaders	Single
Mainsail	Dacron Sanders Sails (age unknown) with vertical battens
Genoa	Dacron Quantum (age unknown)
Genoa furler	Facnor
Reefing System	main in-mast furling
Boomvang	mechanical and tackle Sparcraft
Primary sheet winch	2 x Harken 32 ST 2 SP

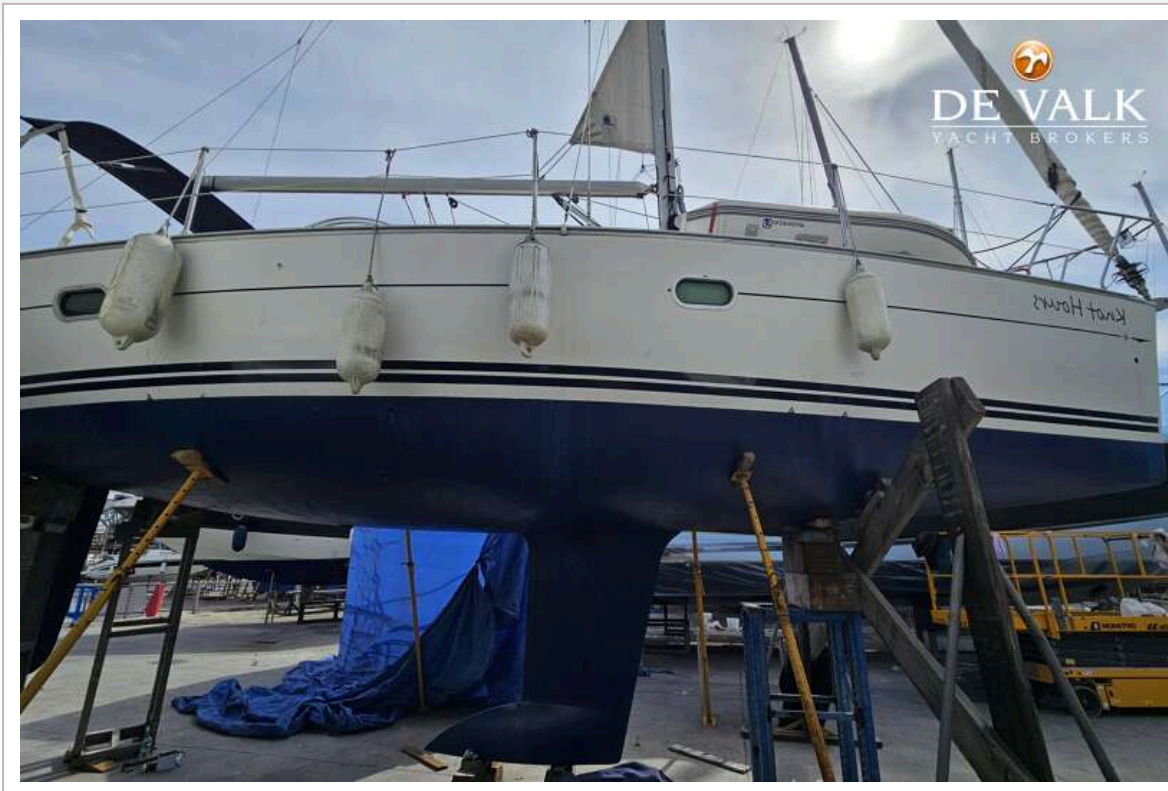


Halyard winches

1 x Harken 16 ST 2 SP



JEANNEAU SUN ODYSSEY 32I



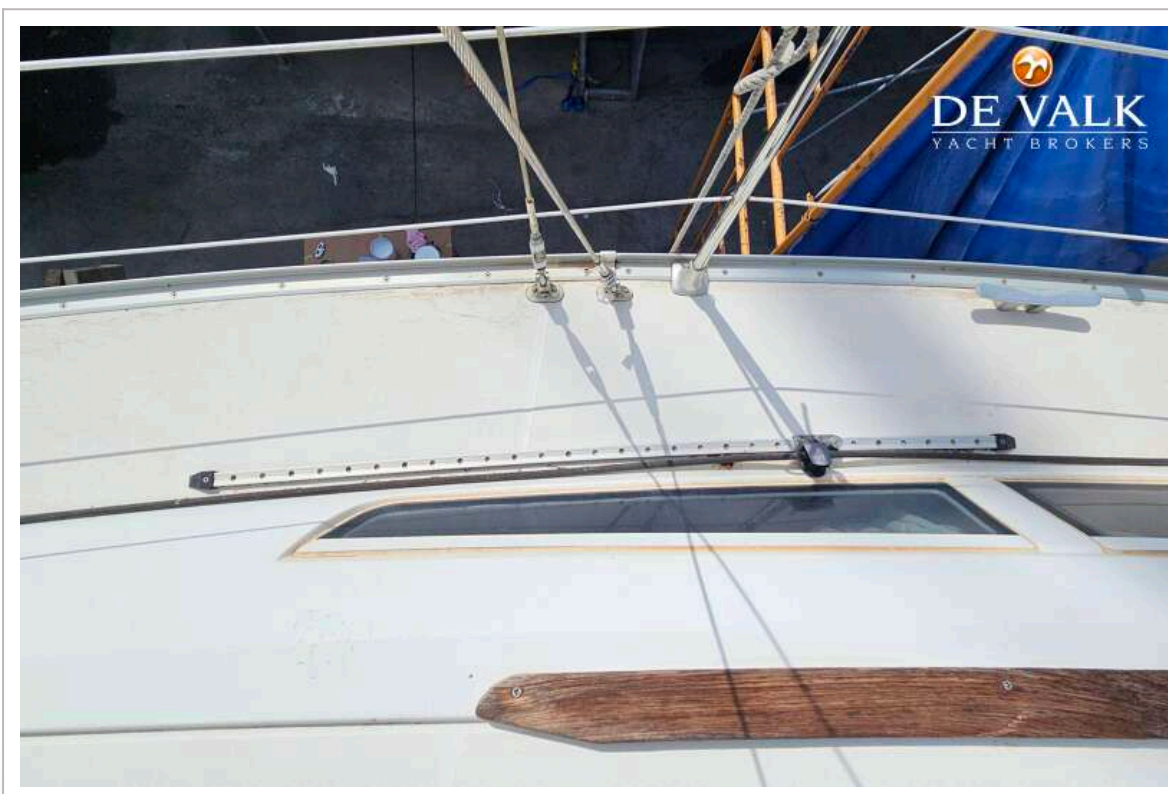
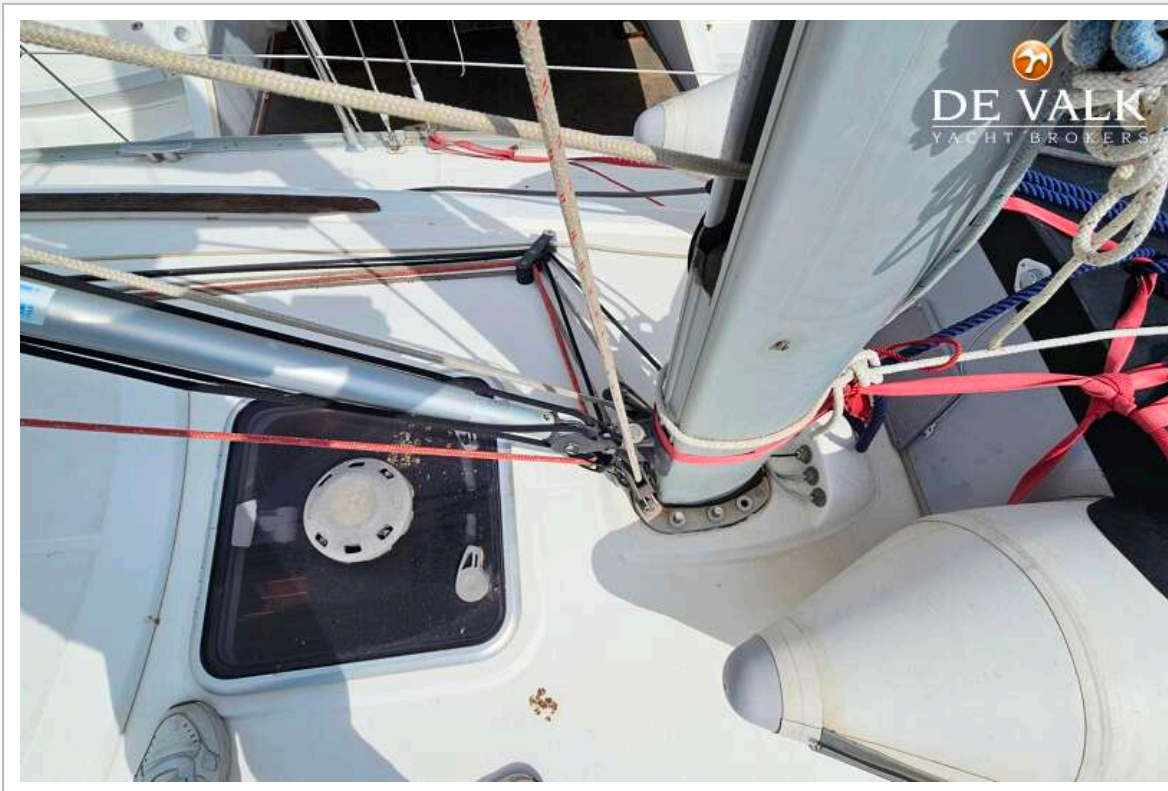
JEANNEAU SUN ODYSSEY 32I



JEANNEAU SUN ODYSSEY 32I



JEANNEAU SUN ODYSSEY 32I



JEANNEAU SUN ODYSSEY 32I



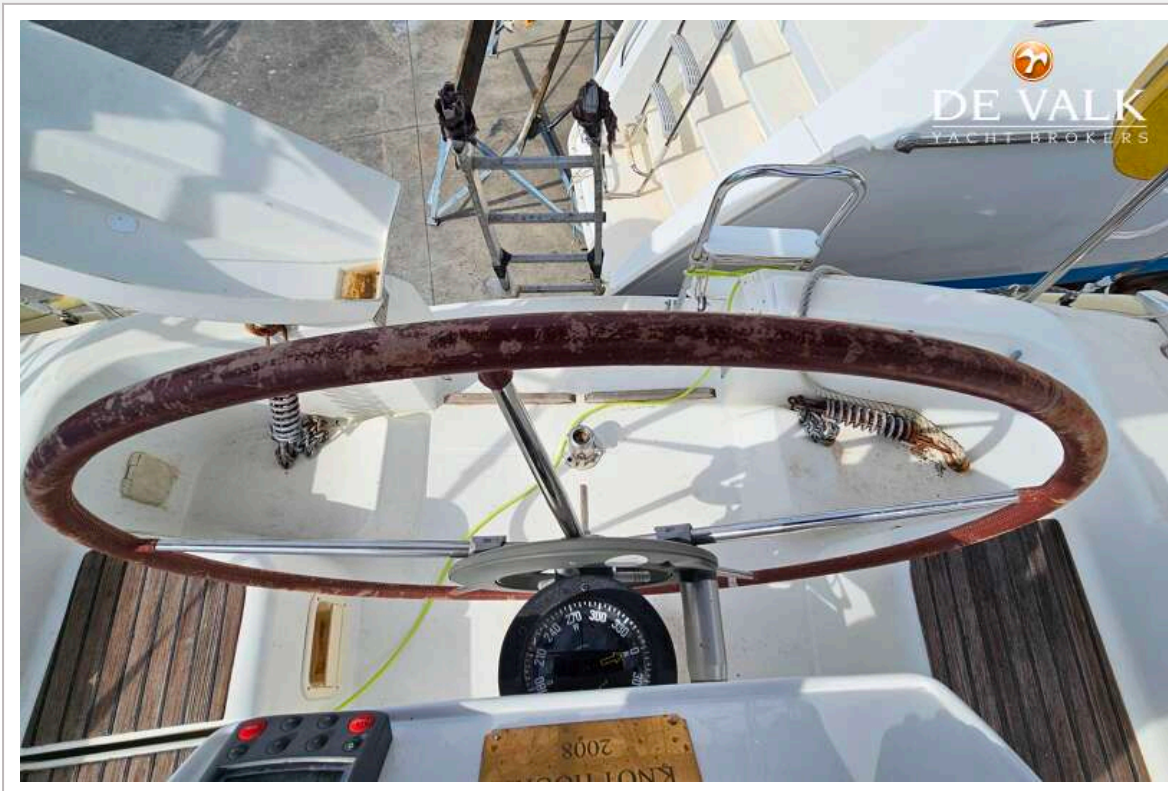
JEANNEAU SUN ODYSSEY 32I



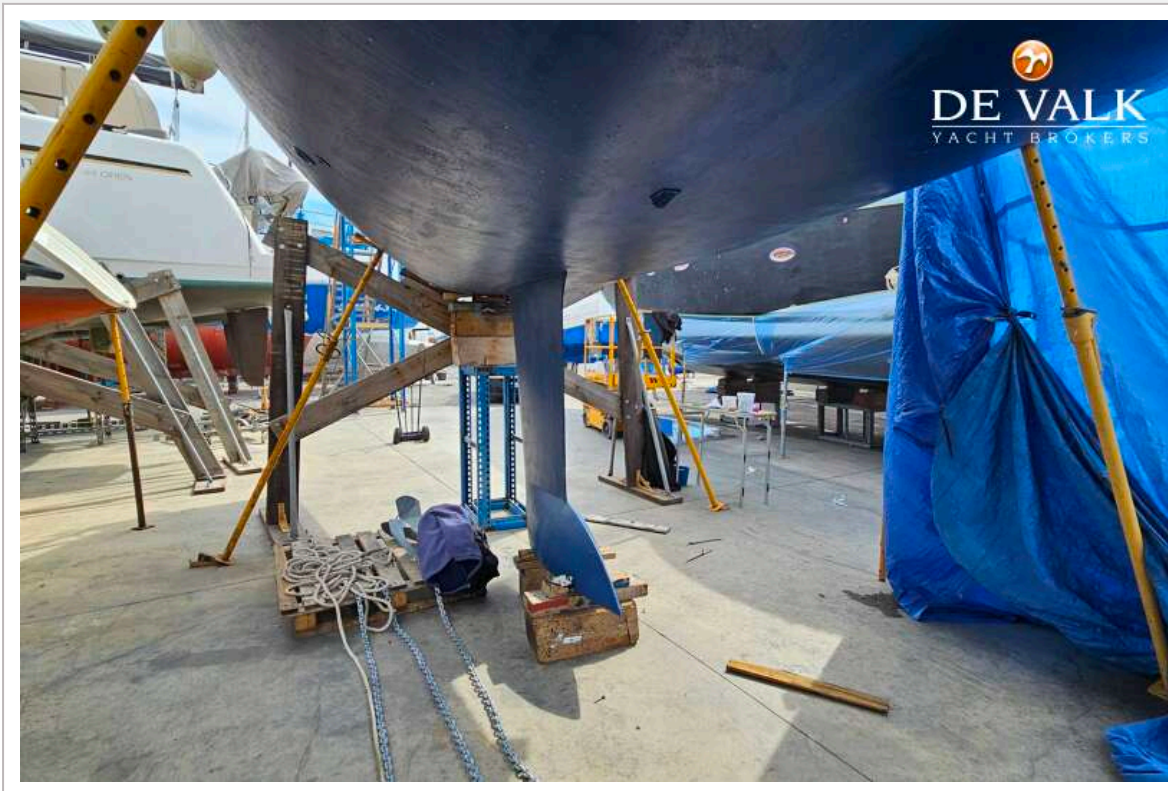
JEANNEAU SUN ODYSSEY 32i



JEANNEAU SUN ODYSSEY 32I



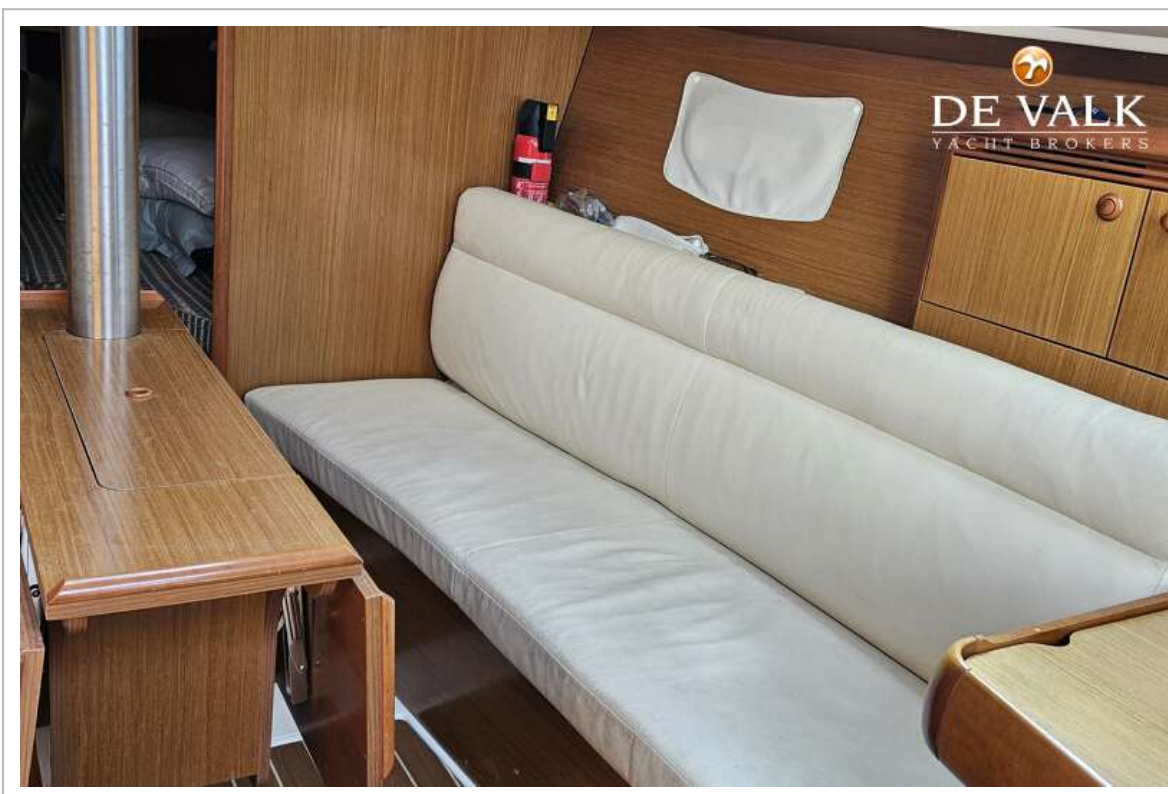
JEANNEAU SUN ODYSSEY 32I



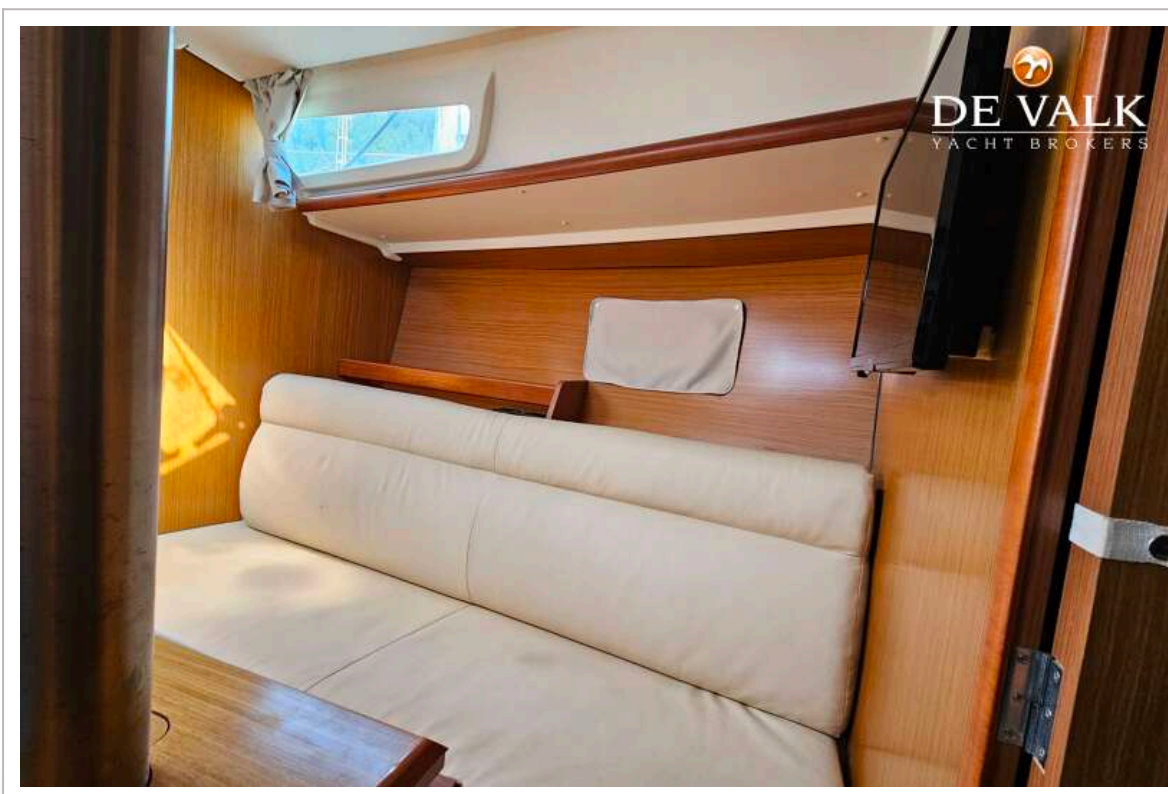
JEANNEAU SUN ODYSSEY 32I



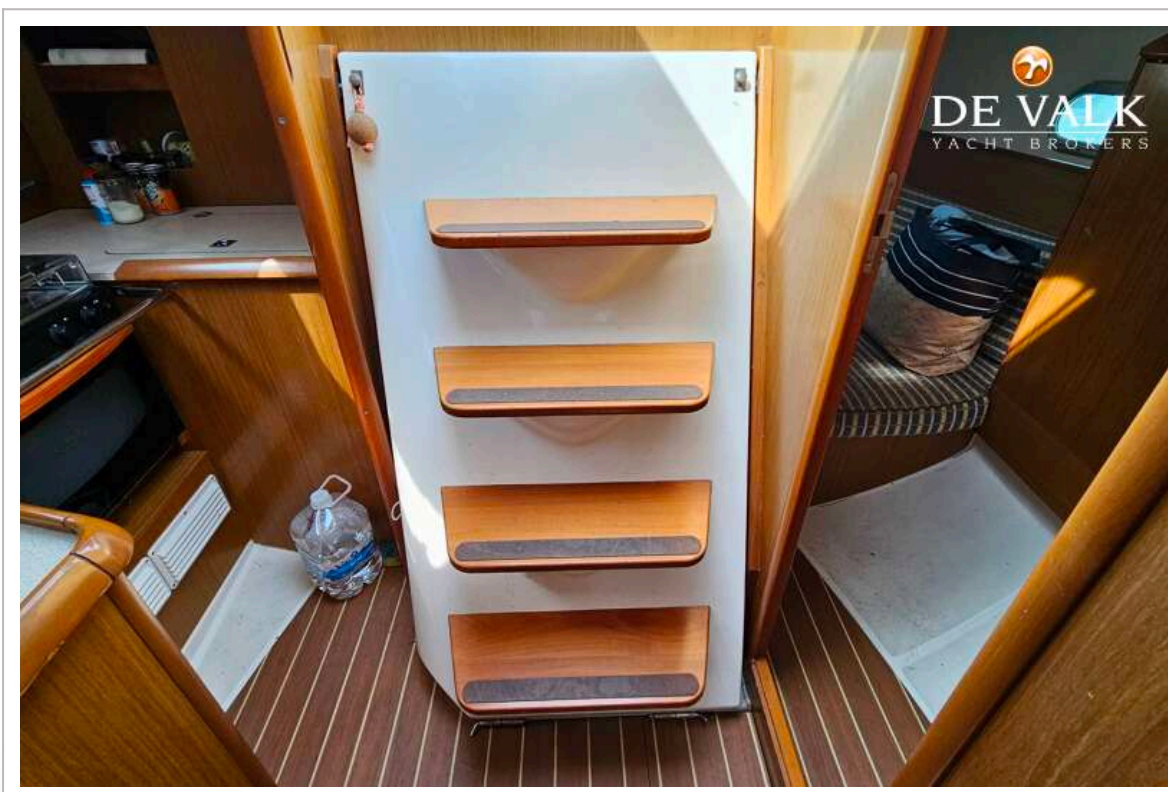
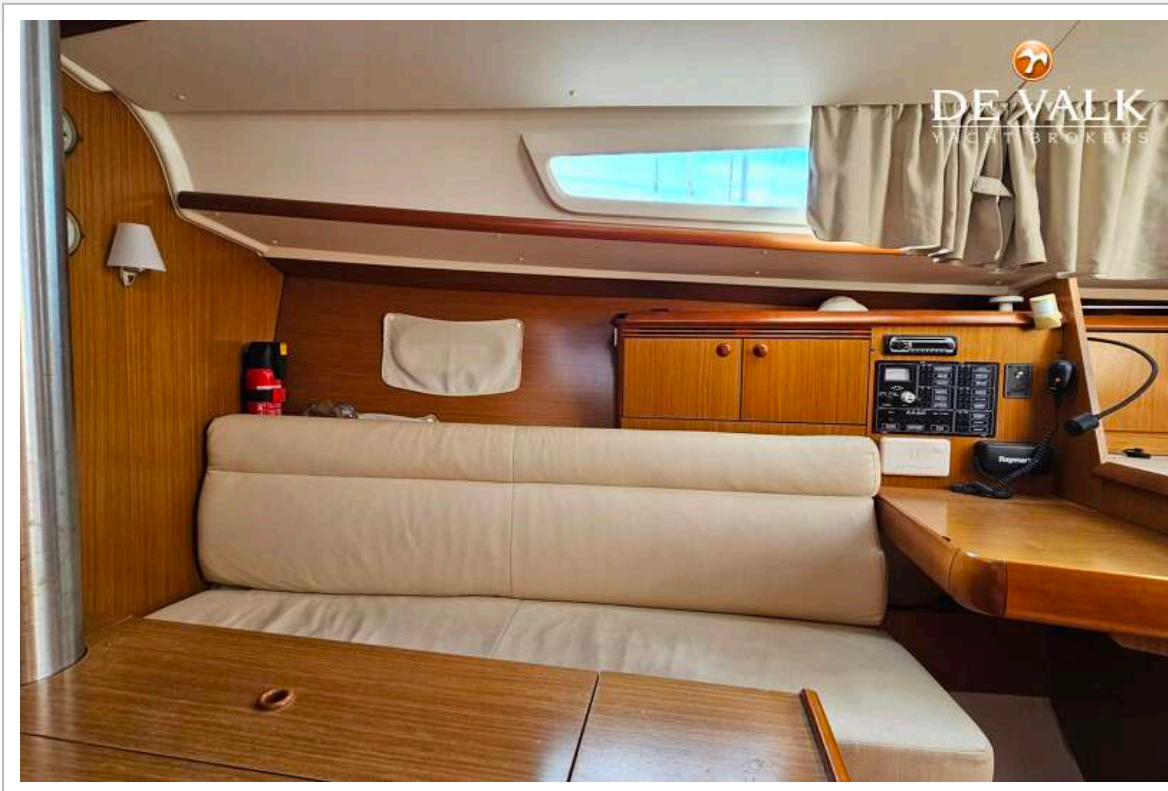
JEANNEAU SUN ODYSSEY 32I



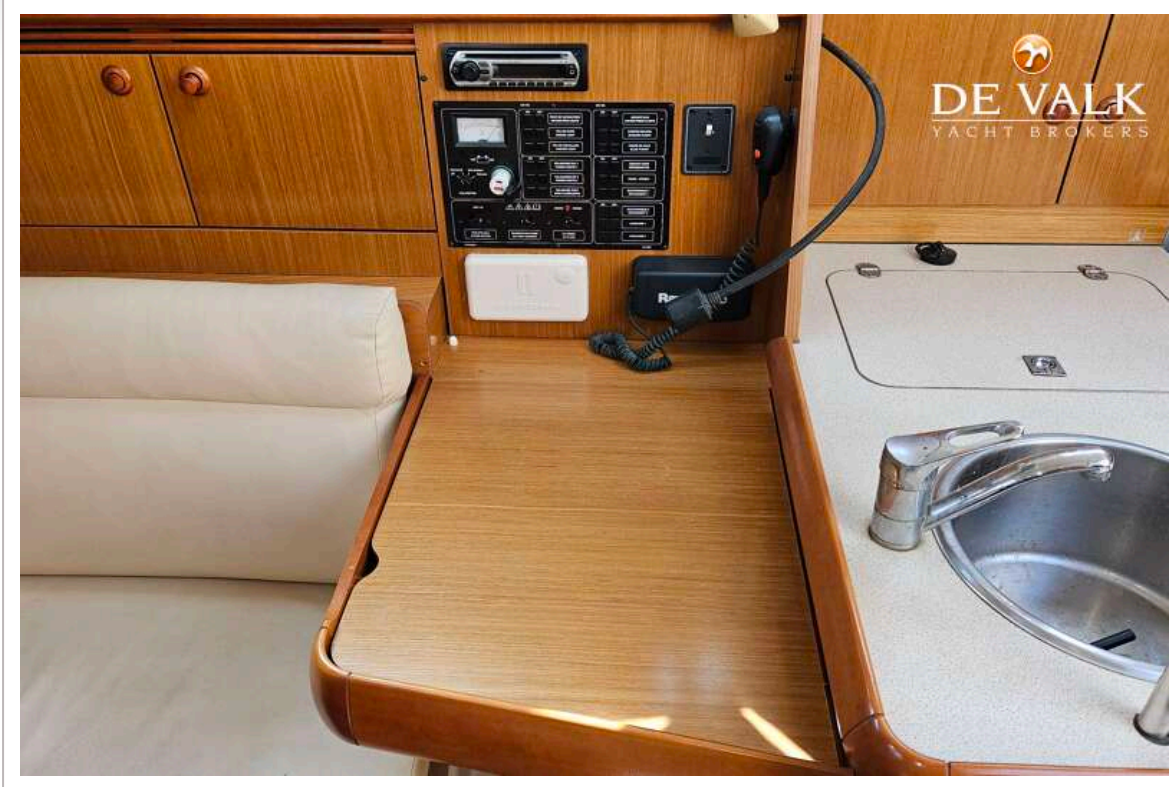
JEANNEAU SUN ODYSSEY 32I



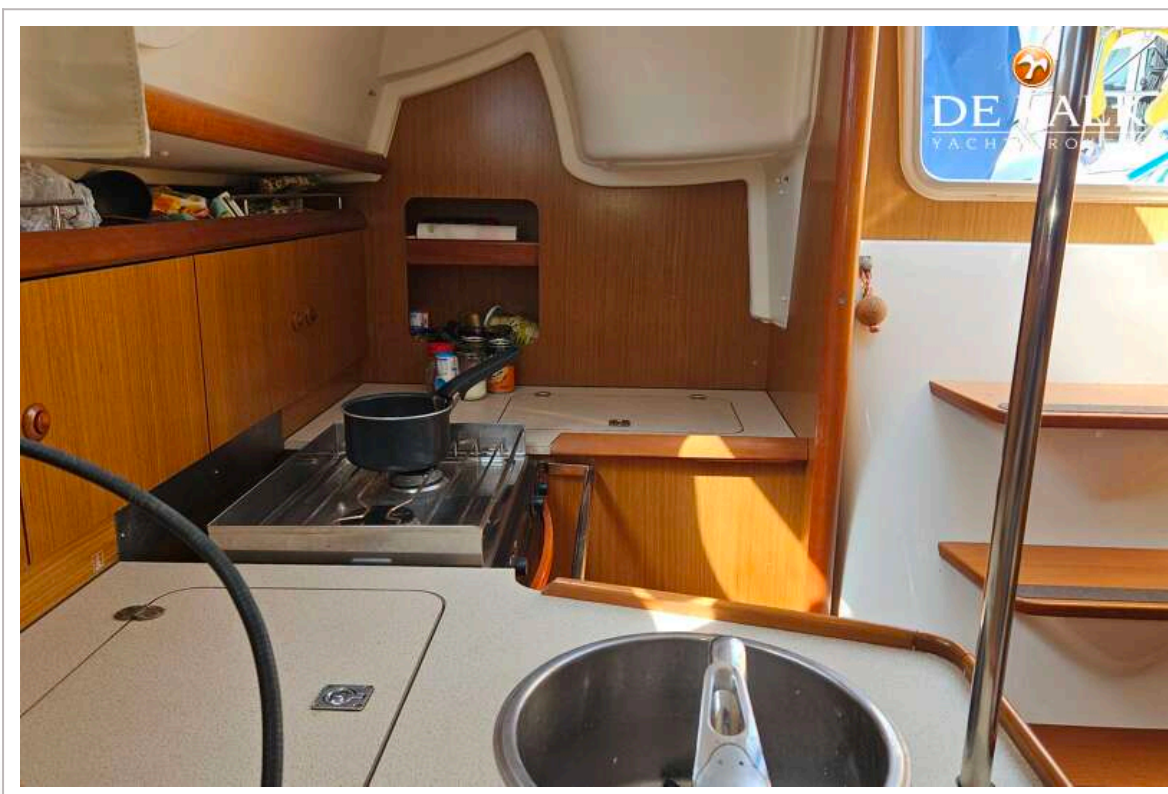
JEANNEAU SUN ODYSSEY 32I



JEANNEAU SUN ODYSSEY 32I



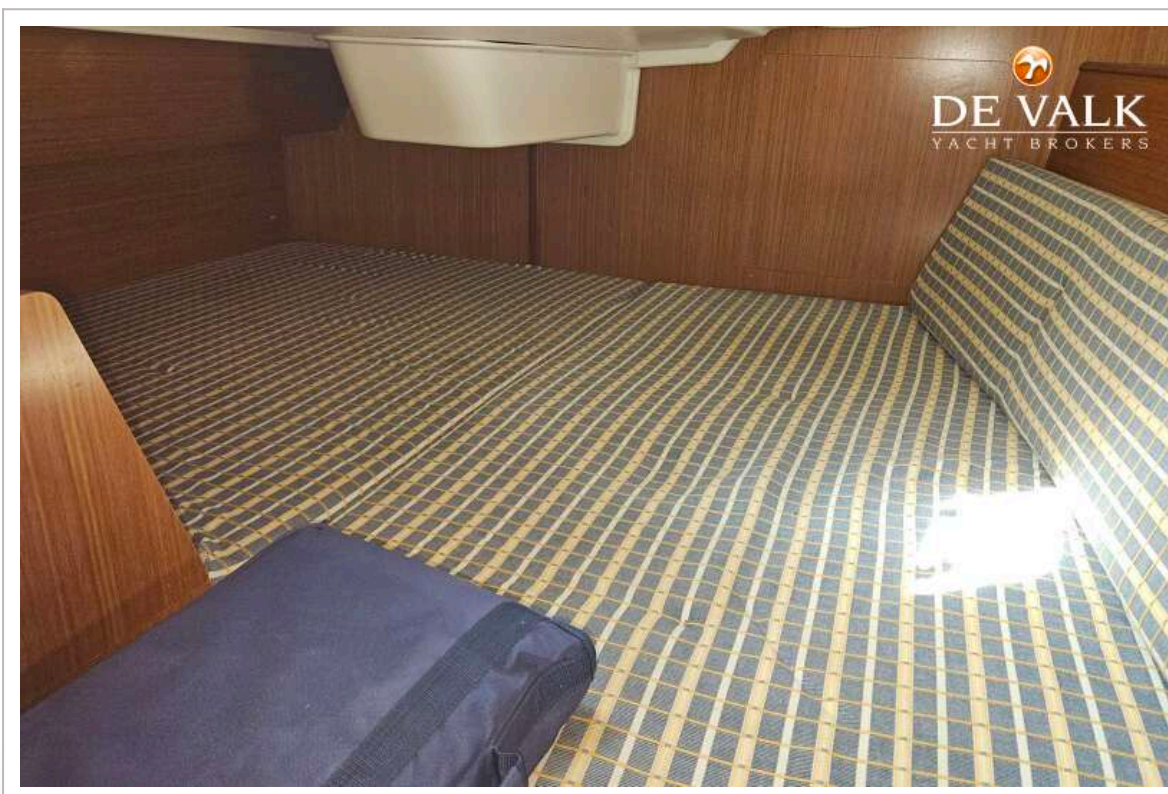
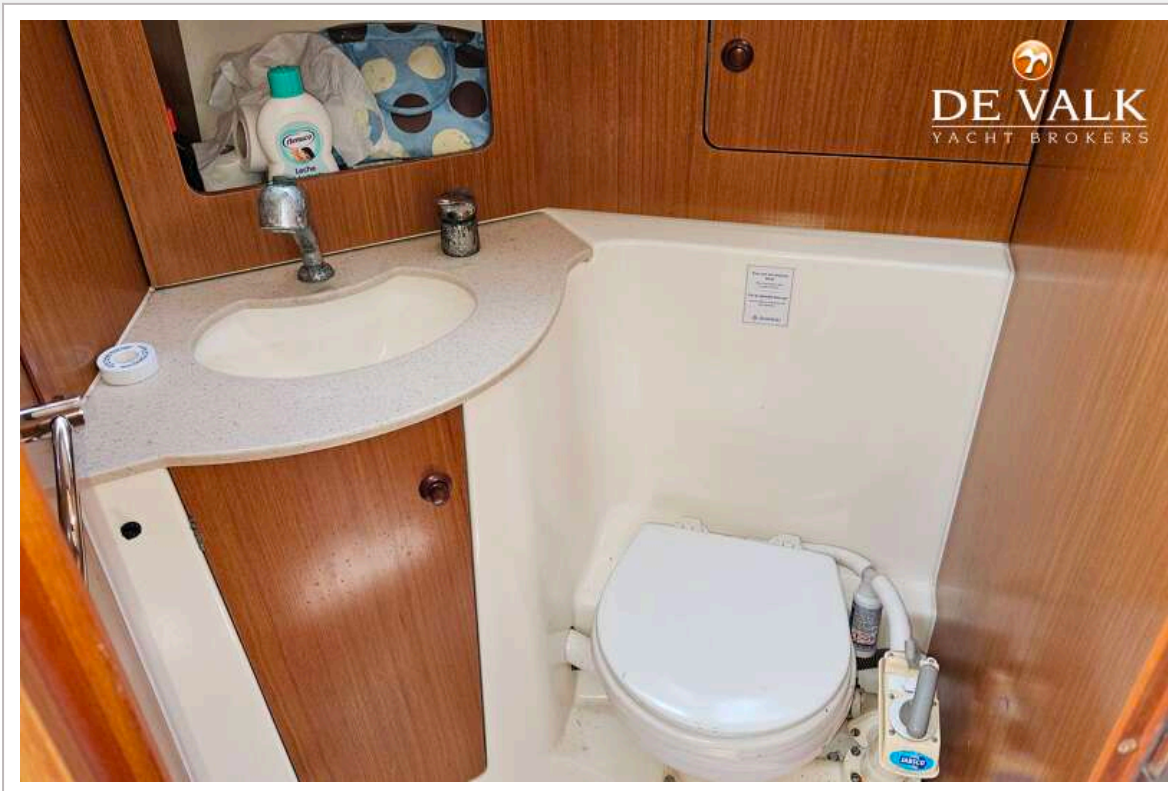
JEANNEAU SUN ODYSSEY 32I



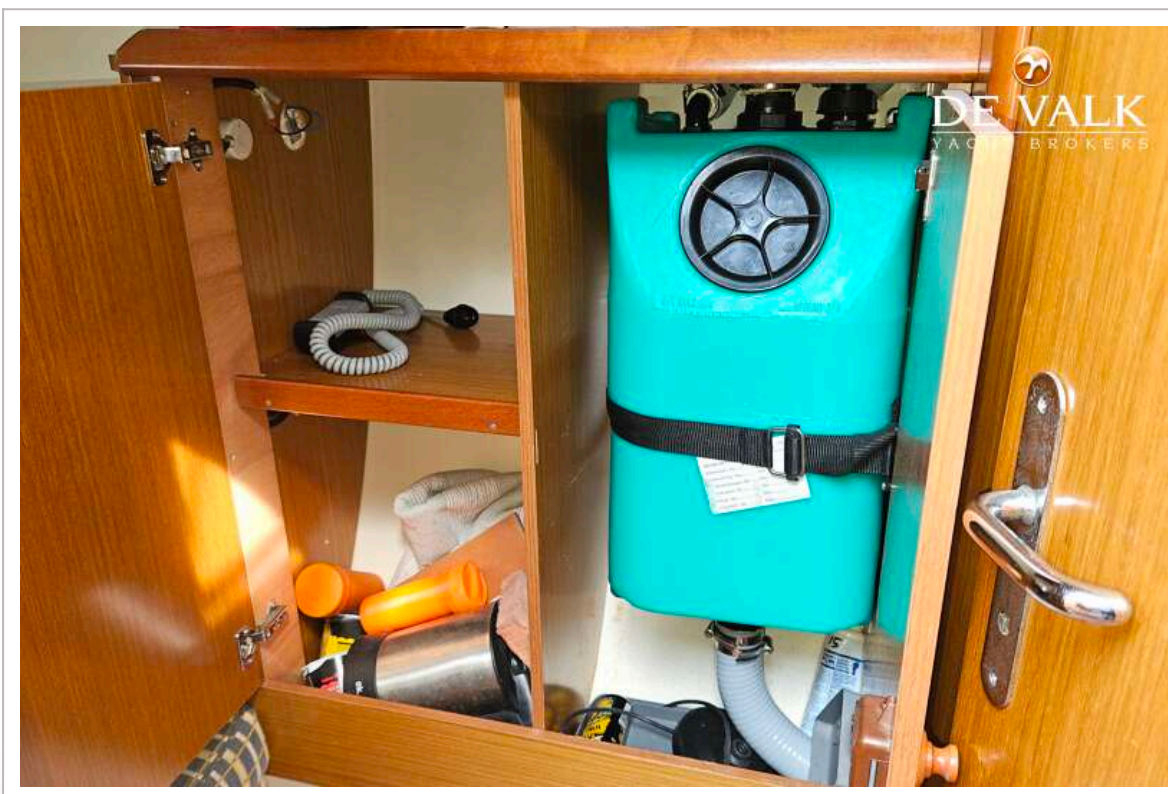
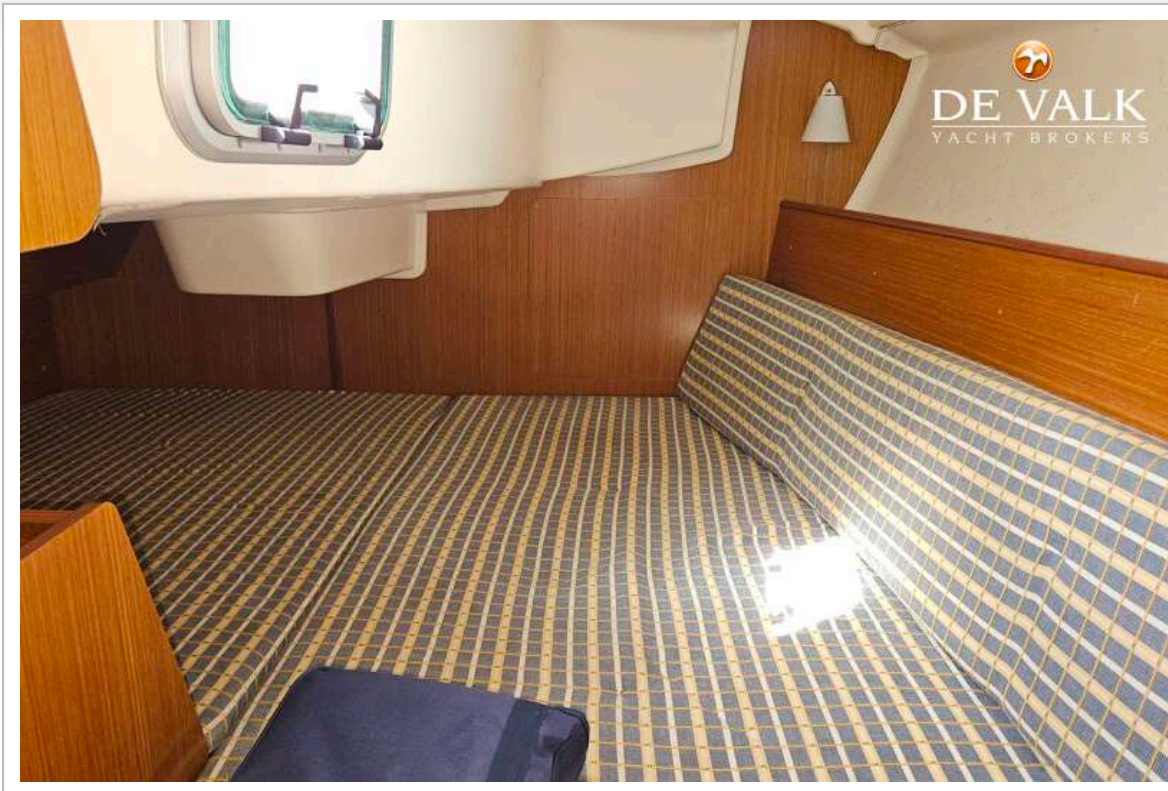
JEANNEAU SUN ODYSSEY 32I



JEANNEAU SUN ODYSSEY 32I



JEANNEAU SUN ODYSSEY 32I



JEANNEAU SUN ODYSSEY 32I

