



DE VALK  
YACHT BROKERS



TIN LINE 65



DE VALK  
YACHT BROKERS

# TIN LINE 65

## BROKER'S COMMENTS

Discover the Tin-Line 65, a 19.90m Dutch-built motor yacht (2004) blending luxury, comfort & performance. Category B rated for sea, rivers and canals. Spacious aft deck with helm, elegant saloon, fully equipped galley, washer/dryer, and 3 cabins for up to 8 guests. Master suite with en-suite bath. Unique aft platform carries a small vehicle. Cruise without compromise.

*Hans Visser*

## SPECIFICATIONS

<b>Dimensions</b>	19.90 x 4.50 x 1.05 (m)	<b>Builder</b>	TIN BOATS Tinnemans Maasbracht
<b>Built</b>	2004	<b>Cabins</b>	3
<b>Material</b>	Steel	<b>Berths</b>	8
<b>Engine(s)</b>	1 x Volvo penta D7ATA diesel	<b>Hp/Kw</b>	240.00 (hp), 176.64 (kw)
<b>Asking price</b>	€ 495.000 (VAT Paid)	<b>Lying</b>	contact Sneek

## CONTACT

<b>Sales office</b>	De Valk Hindeloopen B.V.	<b>Telephone</b>	+31 514 52 40 00
<b>Address</b>	Oosterstrand 1 8713 JS Hindeloopen NL	<b>E-mail</b>	hindeloopen@devalk.nl

## DISCLAIMER

These particulars are given in good faith as supplied but cannot be guaranteed.



## GENERAL

<b>Model</b>	TIN LINE 65
<b>Type</b>	motor yacht
<b>LOA (m)</b>	19,90
<b>Beam (m)</b>	4,50
<b>Draft (m)</b>	1,05
<b>Air draft min (m)</b>	3,30
<b>Year built</b>	2004
<b>Launched</b>	2004
<b>Builder</b>	TIN BOATS Tinnemans Maasbracht
<b>Country</b>	The Netherlands
<b>Designer</b>	Tinnemans
<b>Displacement (t)</b>	45
<b>CE norm</b>	B
<b>Hull material</b>	steel
<b>Hull colour</b>	blue
<b>Superstructure material</b>	steel
<b>Rubbing strake</b>	steel
<b>Deck material</b>	steel
<b>Deck finish</b>	non-skid paint
<b>Window frame</b>	aluminium
<b>Window material</b>	double glazing
<b>Mast can be lowered</b>	manual
<b>Fuel tank (litre)</b>	4000
<b>Freshwater tank (litre)</b>	4000
<b>Blackwater tank (litre)</b>	2x 400
<b>Wheel steering</b>	hydraulic
<b>Inside helm position</b>	yes
<b>Outside helm position</b>	hydraulic

## ACCOMMODATION



# TIN LINE 65

Cabins	3
Berths	8
Interior	teak
Floor	teak and holly
Aft deck	yes
Saloon	yes
Headroom saloon (m)	2.00 m
Heating	central heating Kabola
Air-conditioning	yes
Aft Cabin	yes
Dinette to convert into berth	Sleeps 2
Galley	yes
Countertop	corian
Sink	stainless steel
Cooker	induction
Oven	yes
Extractor	yes
Microwave	yes
Fridge	yes
Freezer	yes
Hot water system	By boiler
Water pressure system	electrical
Ice maker	yes
Owners cabin	French bed
Bathroom	en suite
Toilet	en suite
Wash basin	in the bathroom
Shower	en suite In bath tub
Bath tub	en suite
Guest cabin 1	double bed
Bathroom	separate
Toilet	separate



Wash basin	in the bathroom
Shower	separate
Guest cabin 2	bunk bed
Washing machine/dryer combi	yes
Extra info	Large, comfortable aft deck with steering position

## MACHINERY

No of engines	1
Make	Volvo penta
Type	D7ATA
HP	240
kW	176.64
Fuel	diesel
Maximum speed (kn)	7
Cruising speed (kn)	9
Consumption (l/hr)	15
Engine cooling system	closed keelcooling
Drive	shaft
Engine controls	electrical
Gearbox	hydraulic
Bowthruster	hydraulic
Exhaust	dry
Electric bilge pump	3x
Generator	silent separator Mitsubishi 13,5 kVa
Start battery	1x
Service battery	1x 480 Ah
Battery charger	Mastervolt
Inverter	Mastervolt
Shorepower	with cable
Spud pole	Telescopic



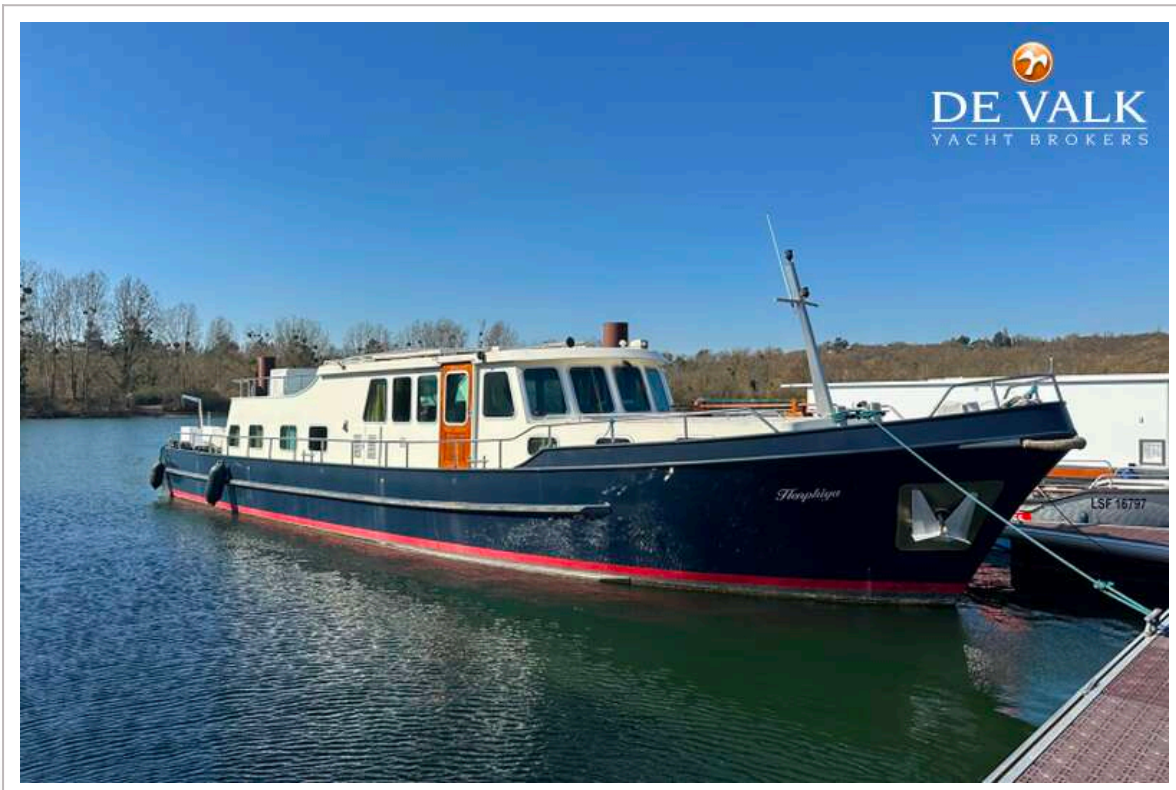
## NAVIGATION

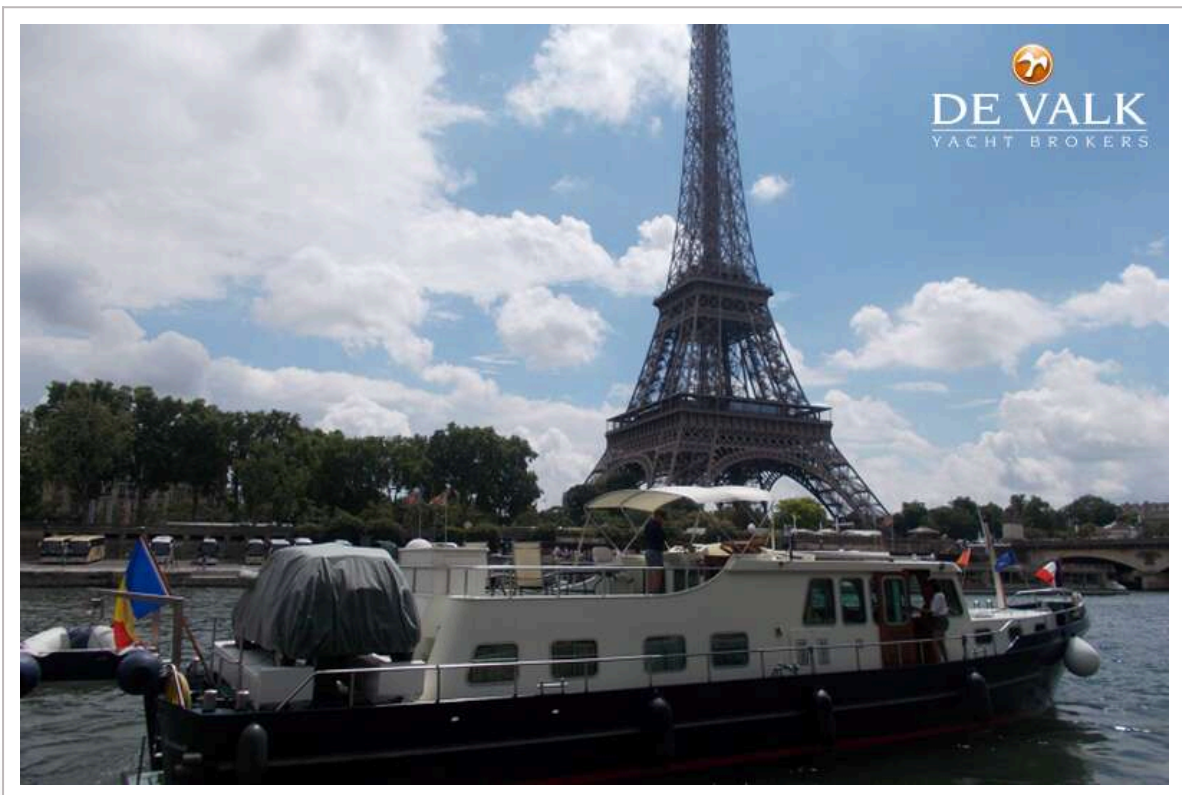
Compass	yes
Depth sounder	yes
VHF	yes
GPS	yes
Plotter	yes
Navigation lights	yes

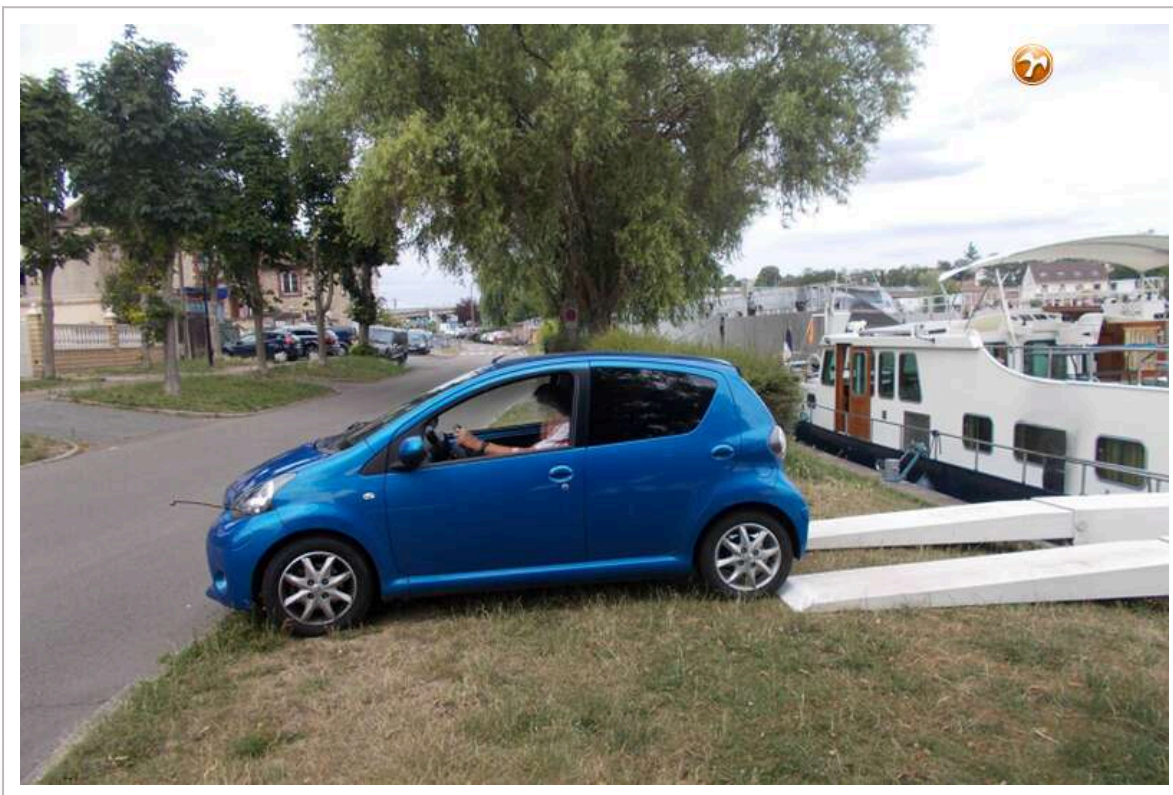
## EQUIPMENT

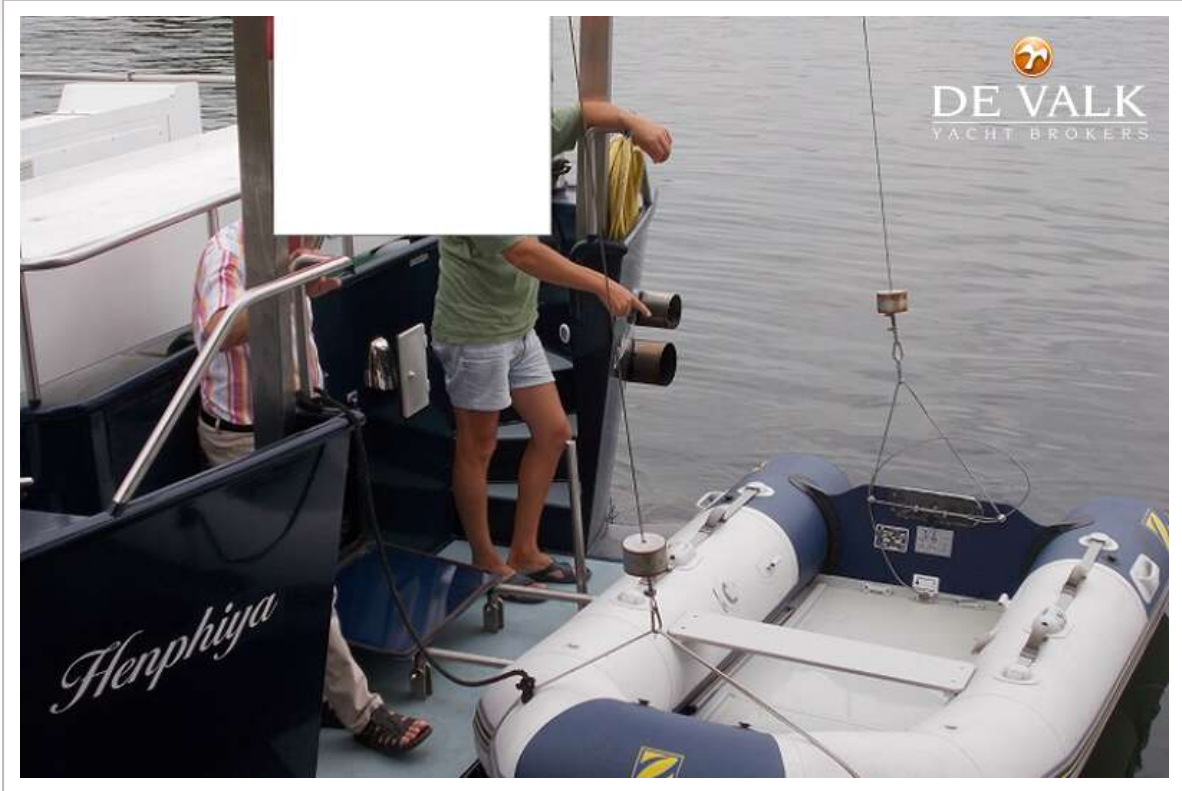
Bathing platform	yes
Boarding ladder	yes
Deck shower	yes
Anchor	yes
Anchor chain	yes
Windlass	electrical
Deck wash	yes
Davits	yes
Horn	yes
Fenders	yes
Mooring lines	yes
TV	yes
Satellite	yes
Radio	yes
Fire extinguisher	yes
Extra info	Car can be stored on deck Hydraulic gangway for a small type of car (eg. Toyota Aigo)









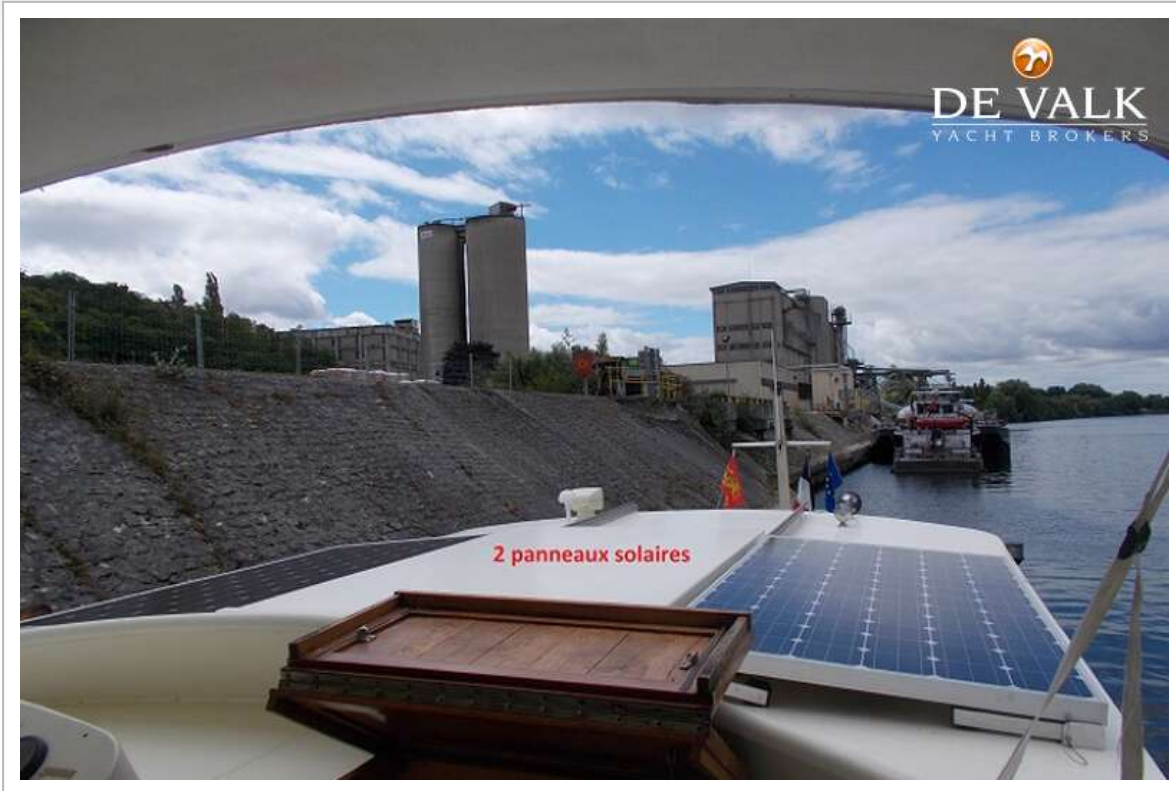


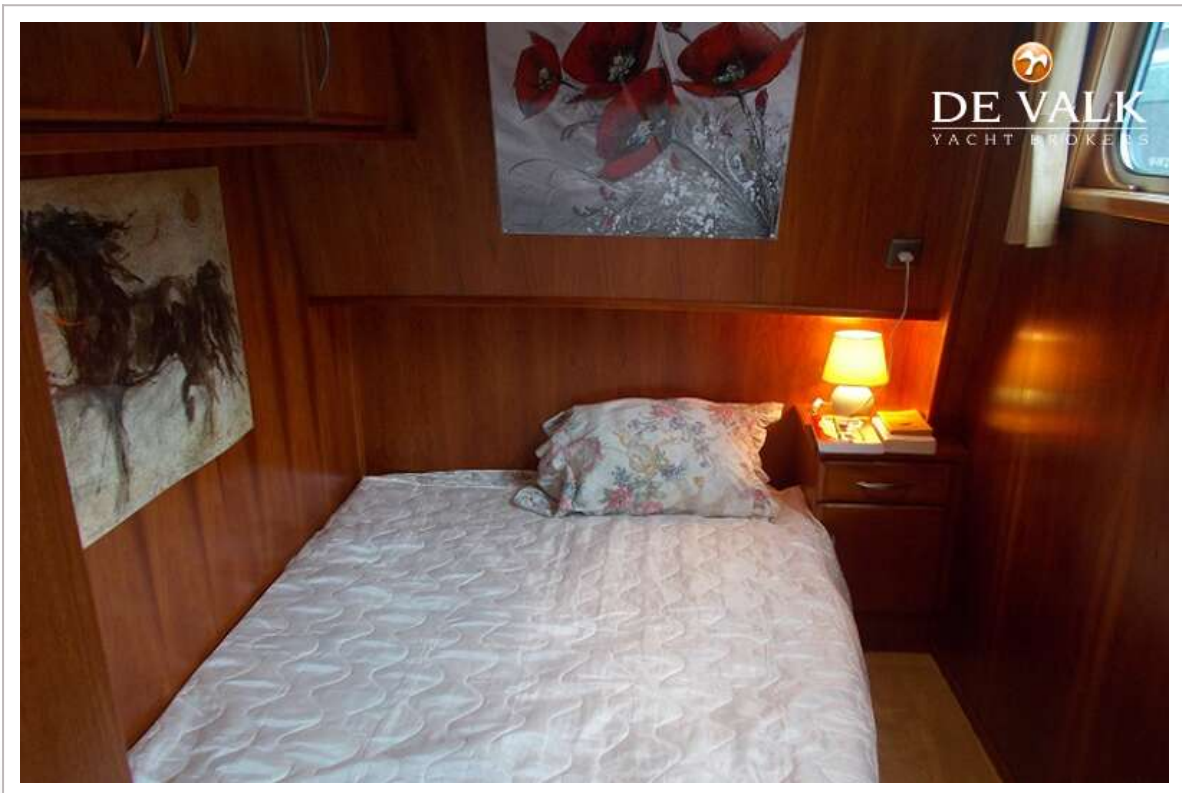
# TIN LINE 65



# TIN LINE 65



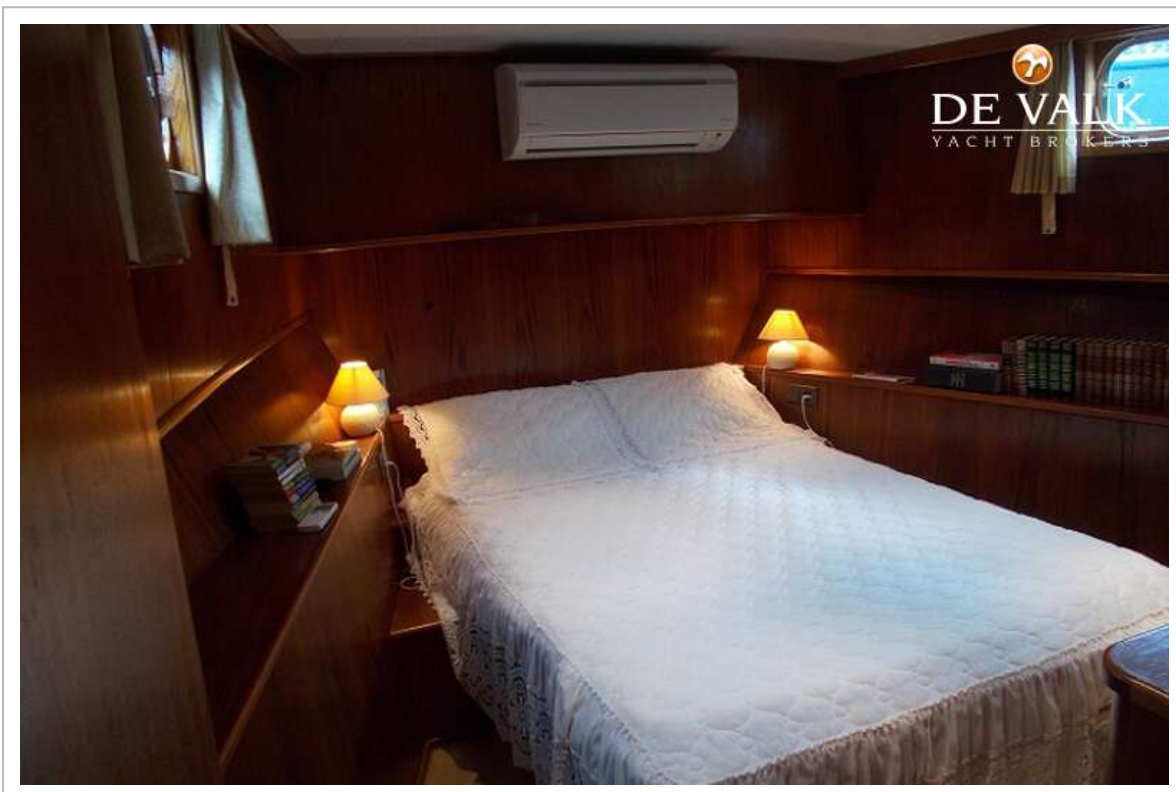






# TIN LINE 65









# TIN LINE 65

