



VALK CONTINENTAL 1500



DE VALK
YACHT BROKERS

VALK CONTINENTAL 1 500

BROKER'S COMMENTS

The Valk Continental 1500 is a stylish and solidly built 15-meter steel motor yacht from the renowned Wim van der Valk shipyard. Built in 2007, the yacht offers a luxurious teak interior with 3 cabins and accommodation for 6 guests, a spacious wheelhouse, and comfortable features such as underfloor heating and a fully equipped galley. Powered by a reliable Volvo Penta D6-280 engine and equipped with both bow and stern thrusters for easy and safe maneuvering.

Ian Pols

SPECIFICATIONS

Dimensions	15.00 x 4.60 x 1.40 (m)	Builder	Wim van der Valk
Built	2007	Cabins	3
Material	Steel	Berths	6
Engine(s)	1 x Volvo Penta D6-280 diesel	Hp/Kw	280.00 (hp), 206.08 (kw)
Asking price	€ 395.000 (VAT Paid)	Lying	at sales office

CONTACT

Sales office	De Valk Altena	Telephone	+31 162 727211
Address	Keizersveer 3A 4941 TA Raamsdonksveer NL	E-mail	altena@devalk.nl

DISCLAIMER

These particulars are given in good faith as supplied but cannot be guaranteed.



VALK CONTINENTAL 1 500

GENERAL

Model	VALK CONTINENTAL 1500
Type	motor yacht
LOA (m)	15,00
Beam (m)	4,60
Draft (m)	1,40
Air draft (m)	5,40
Air draft min (m)	4,50
Headroom (m)	2,00
Year built	2007
Builder	Wim van der Valk
Country	The Netherlands
Displacement (t)	29
Gross tonnage	29
CE norm	B
Hull material	steel
Hull colour	blue
Hull shape	multi hard chine
Superstructure material	steel
Rubbing strake	stainless steel
Deck material	steel
Deck finish	teak
Superstructure deck finish	non-skid paint
Window frame	aluminium
Window material	glass
Deckhatch	Aluminium
Portholes	aluminium
Mast can be lowered	hydraulic
Fuel tank (litre)	steel 2500 L
Level indicator (fuel tank)	yes
Freshwater tank (litre)	1100 L



VALK CONTINENTAL 1 500

Blackwater tank (litre)	500 L
Blackwater tank extraction	deck extraction + pump
Wheel steering	hydraulic
Inside helm position	yes

ACCOMMODATION

Cabins	3
Berths	6
Interior	teak
Pilot house	yes
Heating	central hot water Kabola B12 Tap
Heating 2	floor heating
Countertop	corian
Sink	stainless steel
Oven	Bosch
Fridge	Bosch
Freezer	yes
Hot water system	on central heating
Water pressure system	electrical
Dishwasher	Bosch
Owners cabin	double bed
Wardrobe	hanging and drawers
Bathroom	en suite
Toilet	en suite
Shower	en suite
Guest cabin 1	French bed
Wardrobe	hanging and shelves
Bathroom	shared
Toilet	shared
Shower	separate
Guest cabin 2	bunk bed



VALK CONTINENTAL 1 500

Wardrobe shelves

MACHINERY

No of engines	1
Make	Volvo Penta
Type	D6-280
HP	280
kW	206.08
Fuel	diesel
Engine cooling system	freshwater heat exchanger
Drive	shaft
Bowthruster	electric Volvo QL 10 kW
Sternthruster	electric Volvo QL 10 kW
Gearbox	mechanical
Exhaust	dry
Propeller type	fixed
Propeller shaft material	stainless steel
Electric bilge pump	yes
Bilge alarm	yes
Generator	Mastervolt Whisper 6
Start battery	yes
Service battery	8x 200Ah
Generator battery	yes
Battery monitor	Mastervolt
Battery charger	Mastervolt
Inverter	Mastervolt
Shorepower	with cable

NAVIGATION

Compass	Raymarine
Depth sounder	Raymarine



Log	Raymarine
Windset	Raymarine
VHF	Ray 240 E
Autopilot	Raymarine
Radar	Raymarine
GPS	Raymarine
Plotter	Raymarine

EQUIPMENT

Bathing platform	yes
Deck shower	yes
Anchor	yes
Anchor chain	yes
Windlass	electrical Lofrans Tigris
Deck wash	yes
Lifejackets	yes
Wiper	yes
Horn	electric
Fenders	yes
Mooring lines	yes
TV	yes
Radio	yes
Fire extinguisher	yes



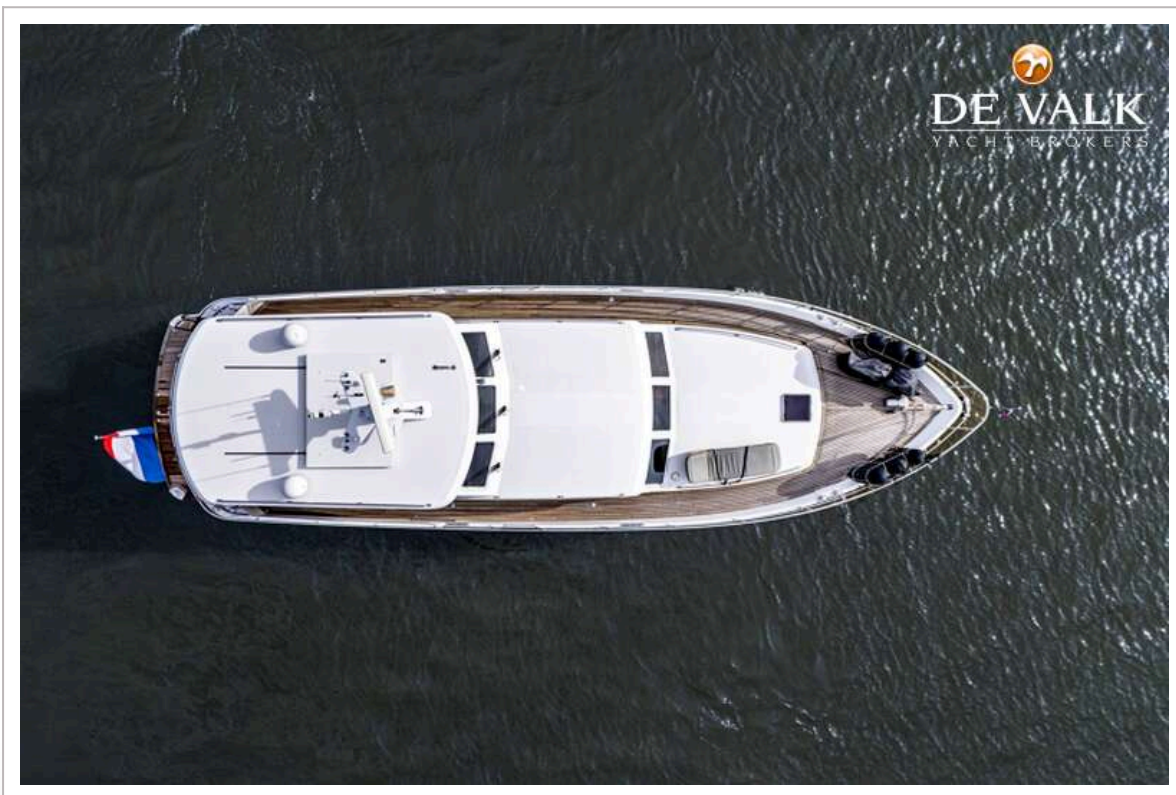
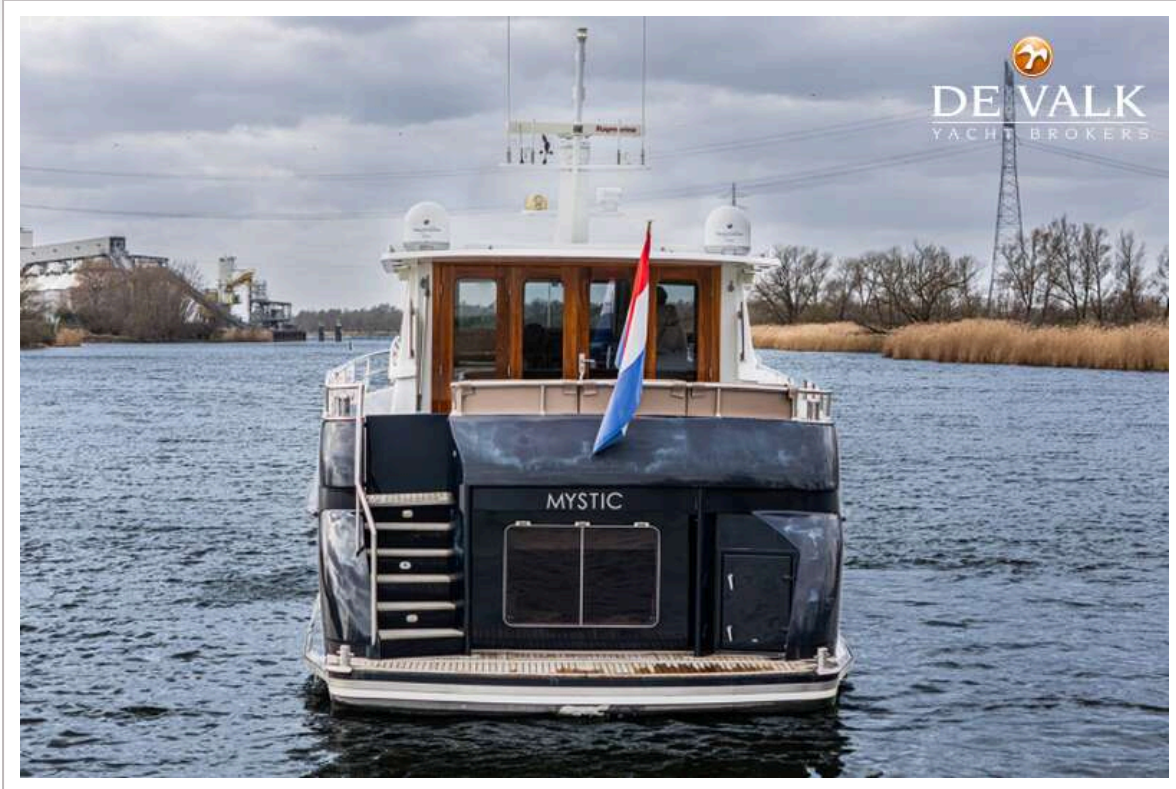
VALK CONTINENTAL 1500



VALK CONTINENTAL 1500



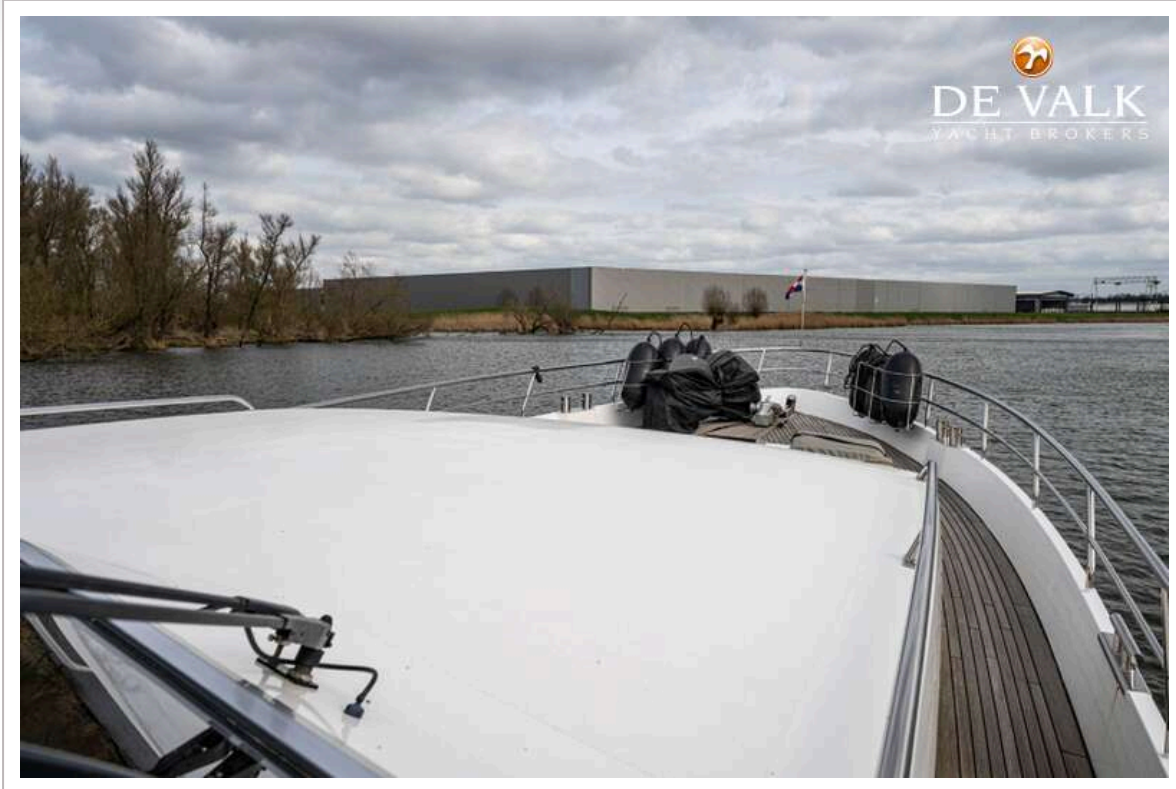
VALK CONTINENTAL 1500



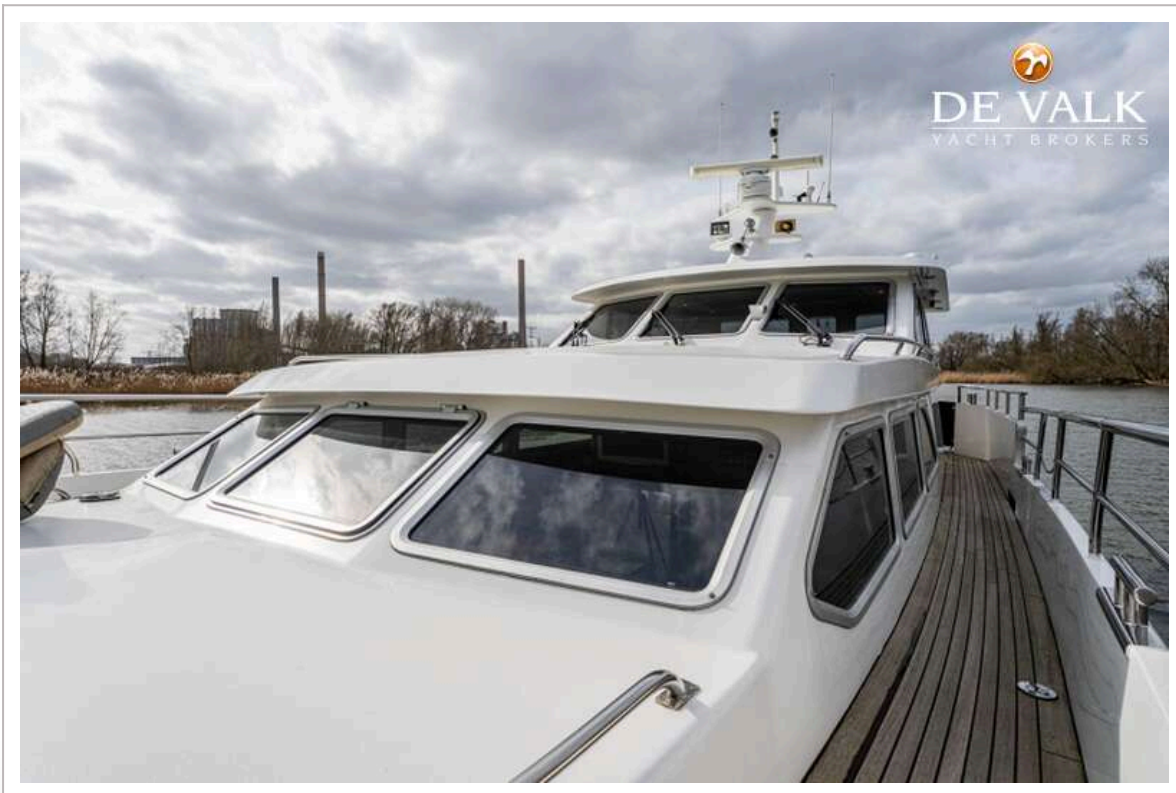
VALK CONTINENTAL 1500



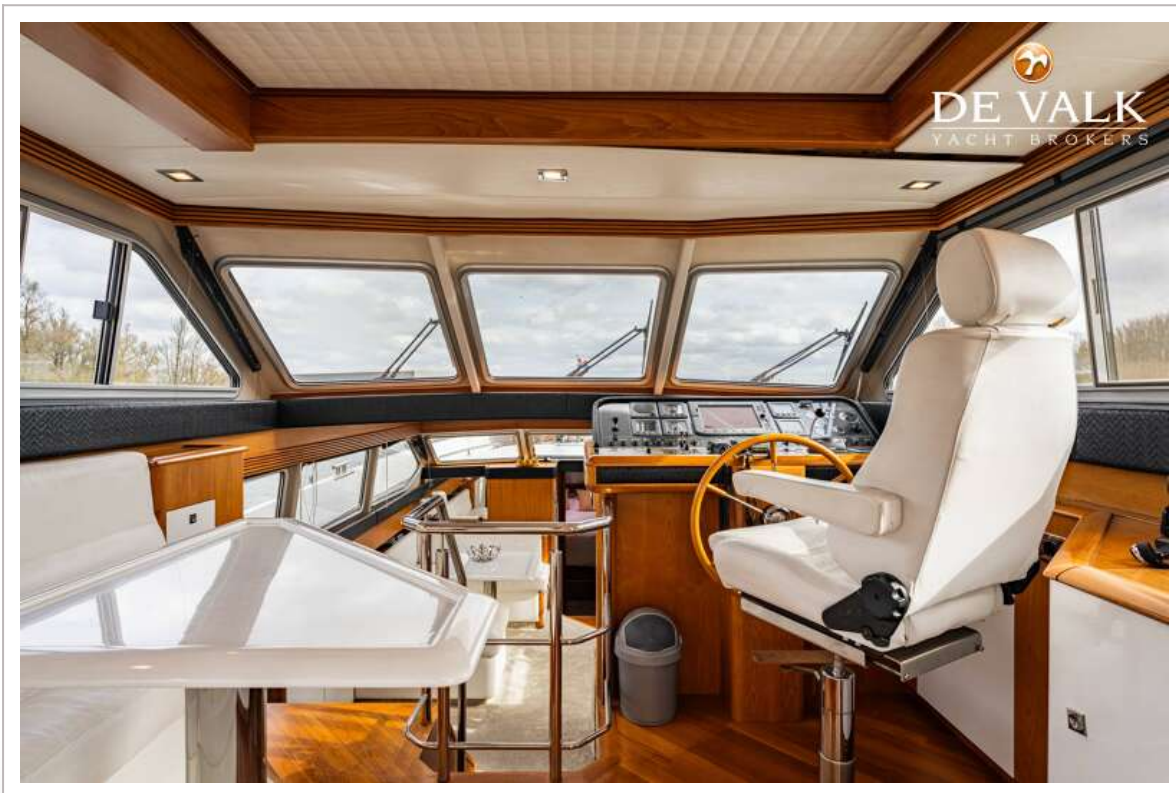
VALK CONTINENTAL 1500



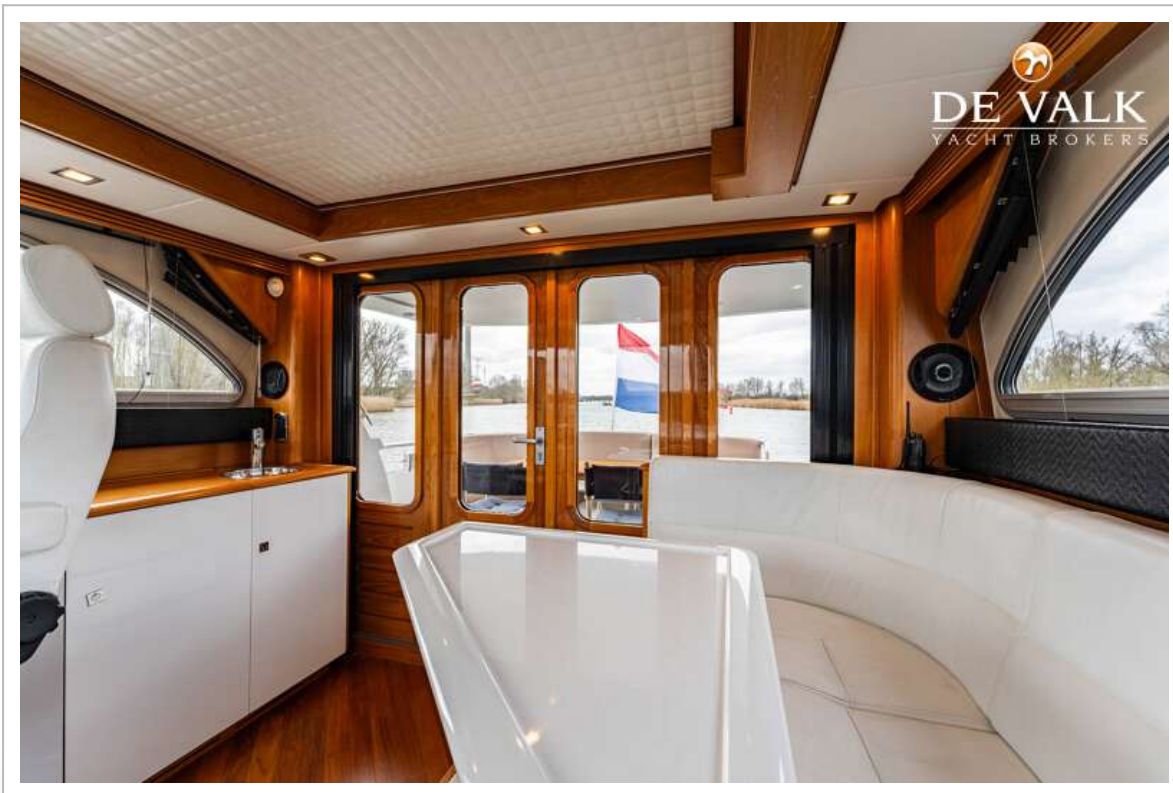
VALK CONTINENTAL 1 500



VALK CONTINENTAL 1500



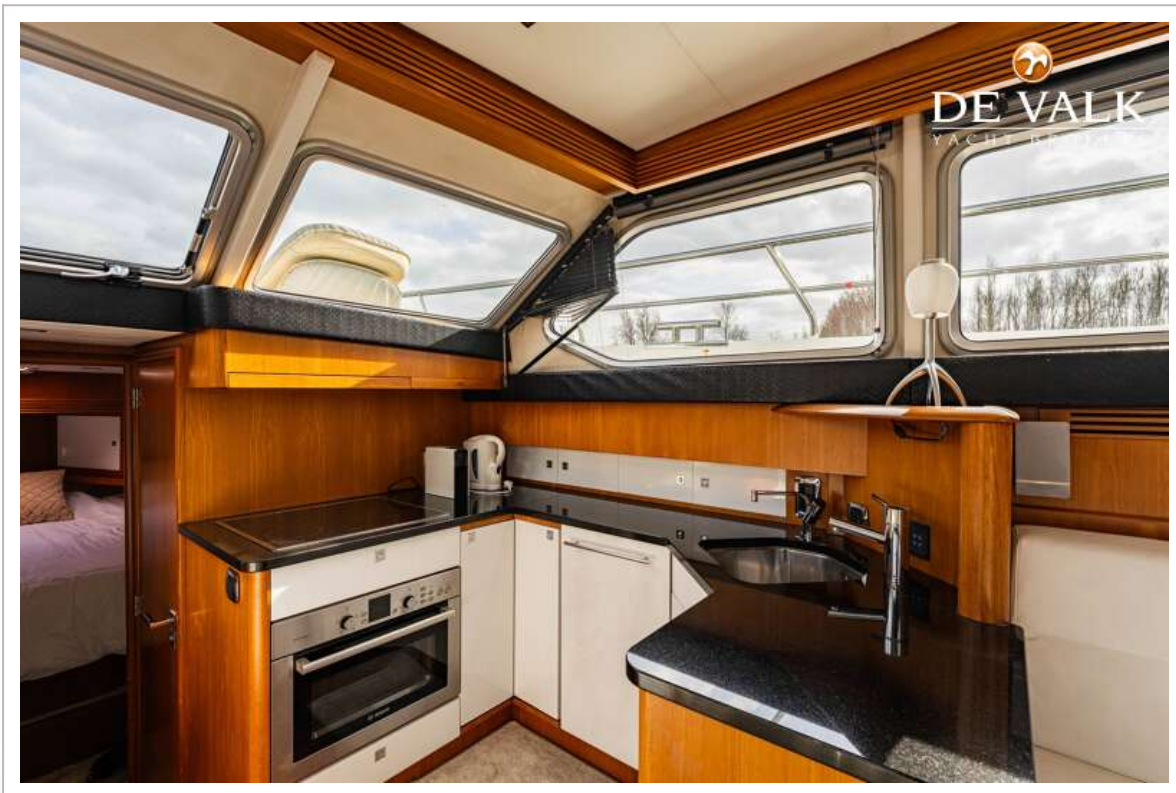
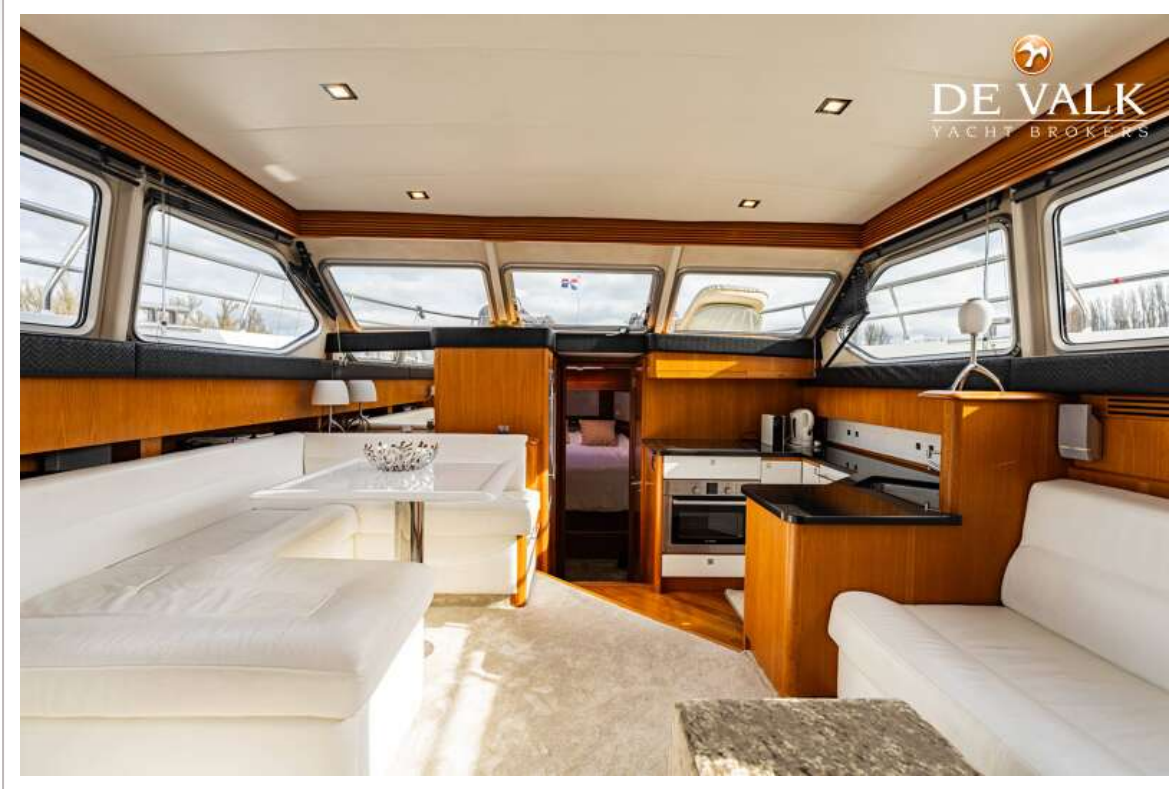
VALK CONTINENTAL 1500



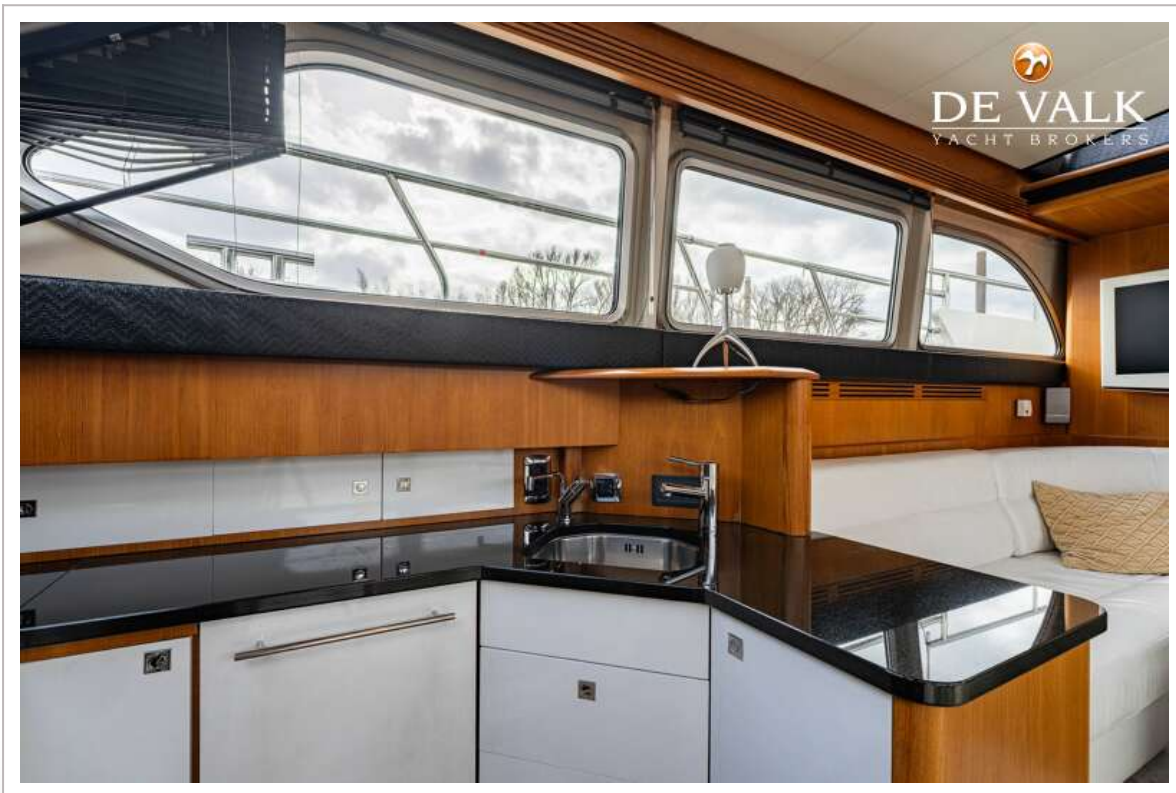
VALK CONTINENTAL 1500



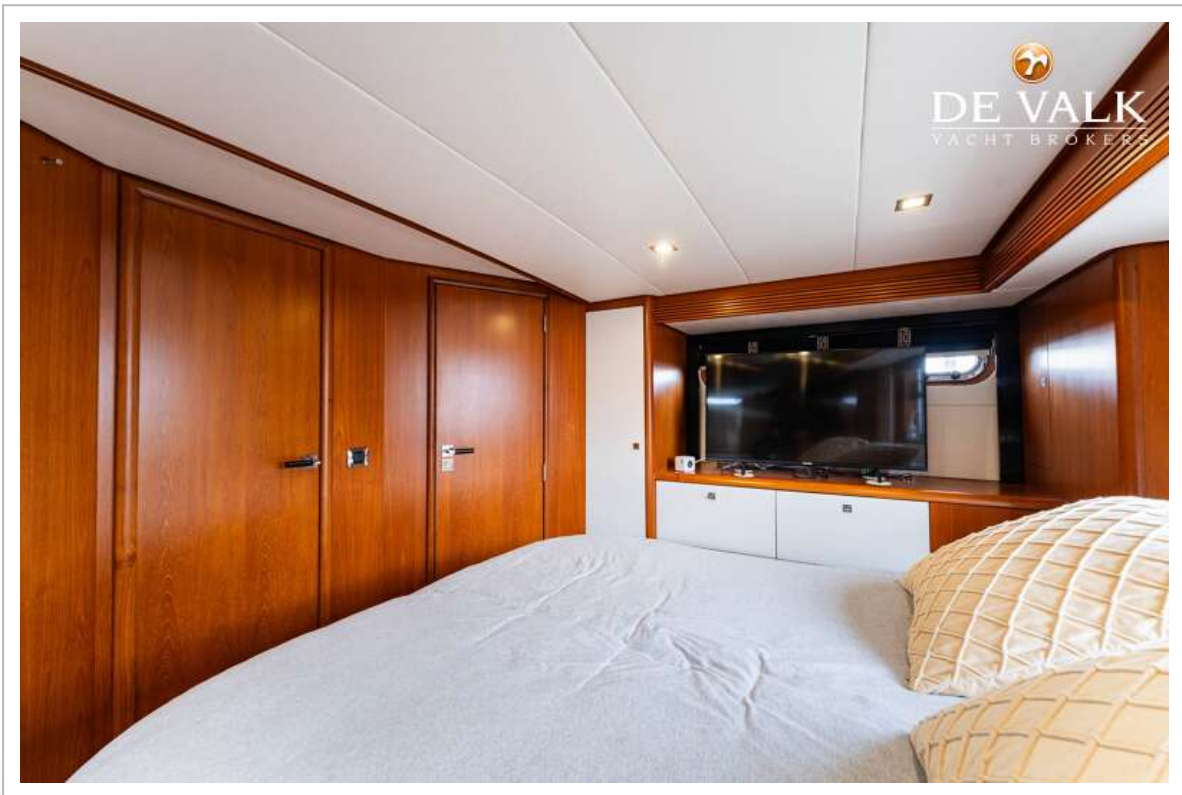
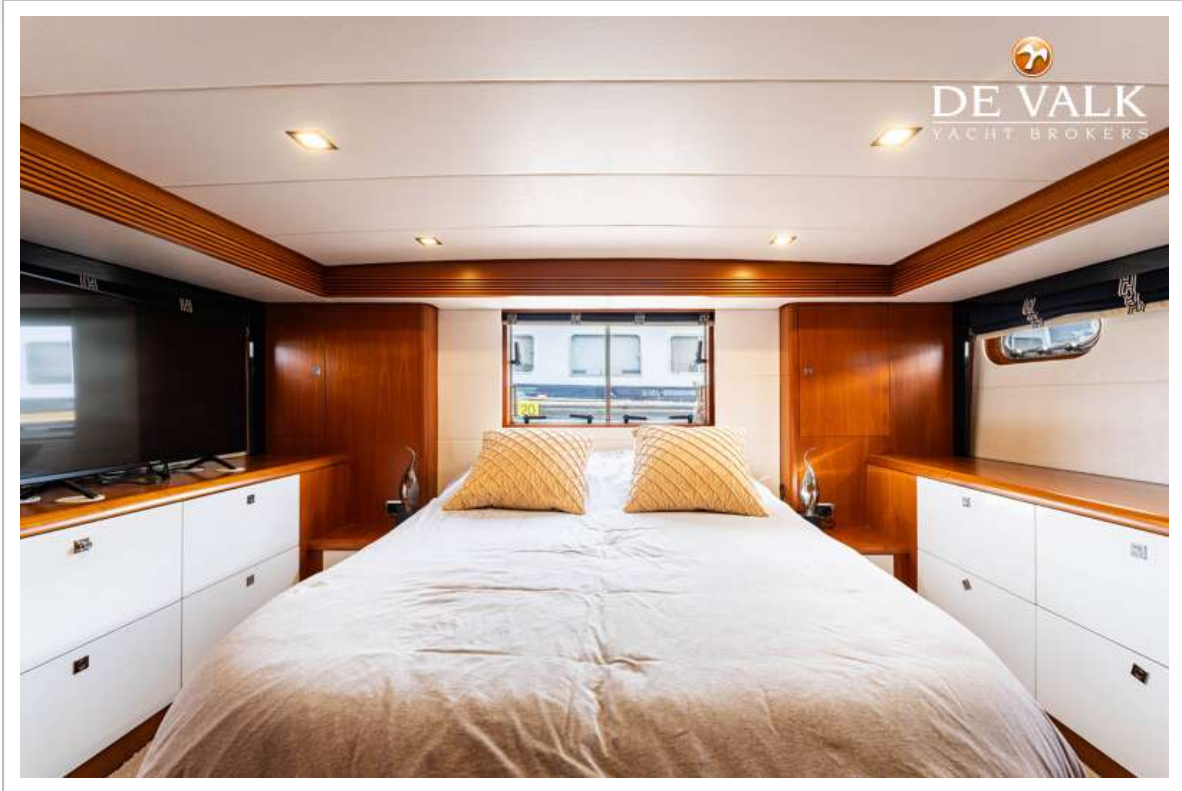
VALK CONTINENTAL 1500



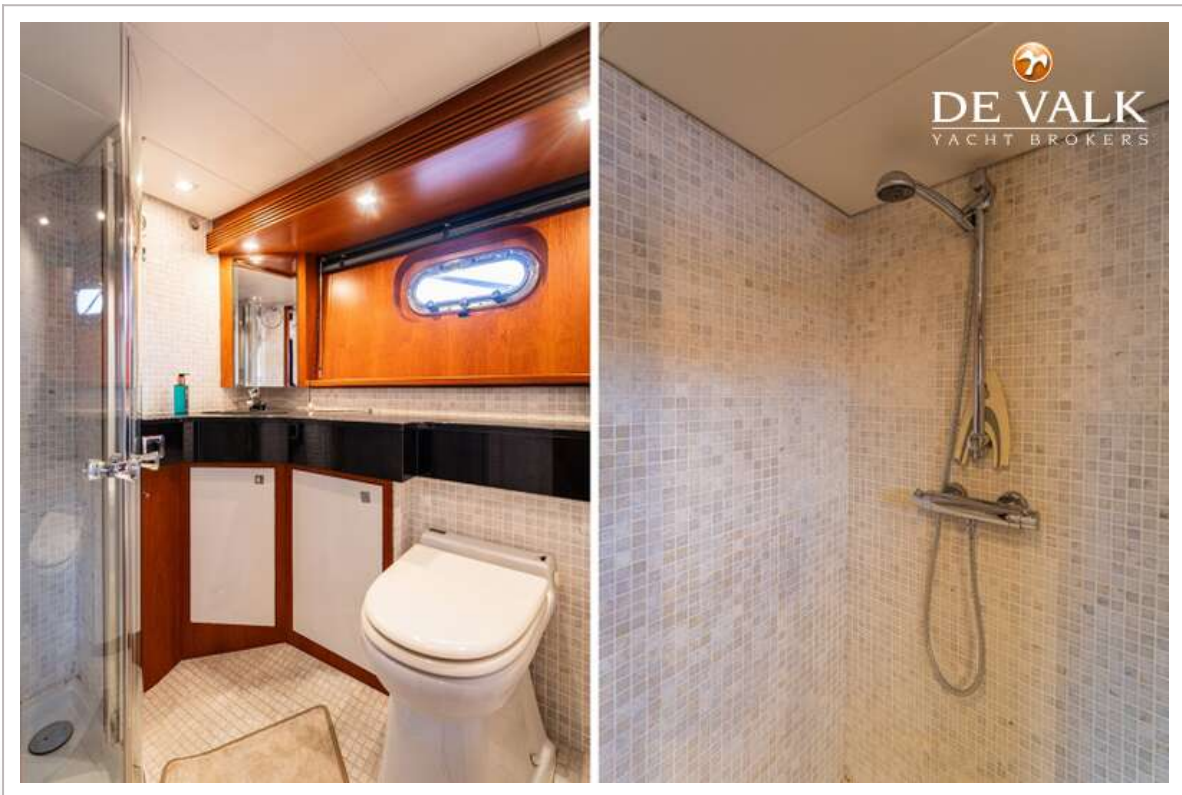
VALK CONTINENTAL 1500



VALK CONTINENTAL 1500



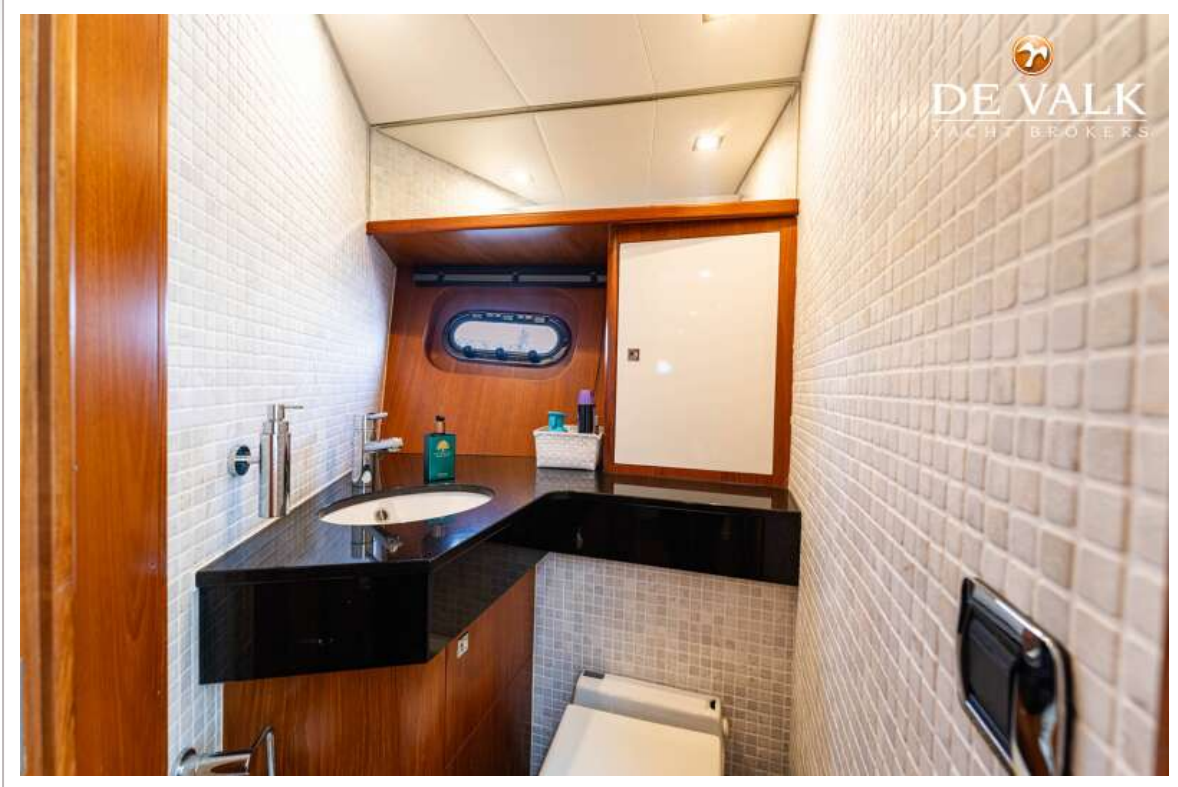
VALK CONTINENTAL 1500



VALK CONTINENTAL 1 500



VALK CONTINENTAL 1500



VALK CONTINENTAL 1500

