



DE VALK
YACHT BROKERS



NOORDERLICHT 50 SPIEGELKOTTER



DE VALK
YACHT BROKERS

NOORDERLICHT 50 SPIEGELKOTTER

BROKER'S COMMENTS

Discover the Noorderlicht 50 Spiegelkotter: an elegant and robust motor yacht that perfectly combines comfort and performance. With spacious accommodation for 6 people, high-quality finishes, and a powerful DAF engine, this vessel is ideal for long, carefree journeys.

Ian Pols

SPECIFICATIONS

| | | | |
|---------------------|--------------------------|----------------|---------------------------------|
| Dimensions | 14.99 x 4.90 x 1.30 (m) | Builder | KBS |
| Built | 2008 | Cabins | 2 |
| Material | Steel | Berths | 6 |
| Engine(s) | 1 x DAF DK1160 MG diesel | Hp/Kw | 158.00 (hp), 116.29 (kw) |
| Asking price | € 235.000 (VAT Paid) | Lying | elsewhere / Not at sales office |

CONTACT

| | | | |
|---------------------|--|------------------|------------------|
| Sales office | De Valk Altena | Telephone | +31 162 727211 |
| Address | Keizersveer 3A 4941 TA Raamsdonksveer NL | E-mail | altena@devalk.nl |

DISCLAIMER

These particulars are given in good faith as supplied but cannot be guaranteed.



NOORDERLICHT 50 SPIEGELKOTTER

GENERAL

| | |
|-------------------------------------|-------------------------------|
| Model | NOORDERLICHT 50 SPIEGELKOTTER |
| Type | motor yacht |
| LOA (m) | 14,99 |
| Beam (m) | 4,90 |
| Draft (m) | 1,30 |
| Air draft min (m) | 3,20 |
| Headroom (m) | 2,00 |
| Year built | 2008 |
| Builder | KBS |
| Country | The Netherlands |
| Designer | Willem Nieland |
| Hull material | steel |
| Hull colour | blue |
| Hull shape | round-bilged |
| Superstructure material | steel |
| Rubbing strake | stainless steel |
| Deck material | steel |
| Deck finish | non-skid paint |
| Superstructure deck finish | paint |
| Antifouling (year) | 2024 |
| Window frame | aluminium |
| Window material | glass |
| Portholes | aluminium |
| Insulation | glasswool |
| Mast can be lowered | electric |
| Fuel tank (litre) | steel 1000 |
| Level indicator (fuel tank) | yes |
| Freshwater tank (litre) | aluminium 2x 950 |
| Level indicator (freshwater) | yes |
| Blackwater tank (litre) | aluminium 400 |



NOORDERLICHT 50 SPIEGELKOTTER

| | |
|------------------------------|------------------------|
| Level indicator (blackwater) | yes |
| Blackwater tank extraction | deck extraction + pump |
| Wheel steering | hydraulic |

ACCOMMODATION

| | |
|-----------------------|------------------------|
| Cabins | 2 |
| Berths | 6 |
| Heating | central hot water Post |
| Galley | yes |
| Countertop | corian |
| Sink | stainless steel |
| Oven | yes |
| Microwave/oven combi | yes |
| Fridge | Miele |
| Freezer | Miele |
| Hot water system | 220V |
| Water pressure system | electrical |
| Owners cabin | double bed |
| Bathroom | en suite |
| Toilet | shared |
| Toilet system | electric |
| Wash basin | in the bathroom |
| Shower | en suite |
| Guest cabin 1 | double bed + stapelbed |

MACHINERY

| | |
|---------------|-----------|
| No of engines | 1 |
| Make | DAF |
| Type | DK1160 MG |
| HP | 158 |
| kW | 116.29 |



NOORDERLICHT 50 SPIEGELKOTTER

| | |
|---------------------------------|----------------------------|
| Fuel | diesel |
| Engine cooling system | hopper cooling |
| Drive | shaft |
| Engine controls | electrical |
| Bowthruster | electric |
| Exhaust | dry |
| Propeller type | fixed |
| Propeller shaft material | stainless steel |
| Shaft lubrication | grease |
| Electric bilge pump | yes |
| Electrical installation | 12V, 24V, 220V |
| Generator | Mastervolt Whisper 6000 |
| Start battery | 2025 |
| Service battery | yes |
| Bowthruster battery | yes |
| Battery monitor | Victron |
| Battery charger/inverter | Victron Quattro 24/3000/70 |
| Solar panel | yes |
| Shorepower | with cable |

NAVIGATION

| | |
|-------------------------------|--------------------|
| Compass | Raymarine |
| Depth sounder/log | Raymarine |
| Fish finder | Raymarine |
| VHF | Raymarine & Sailor |
| Autopilot | Raymarine |
| Rudder angle indicator | Raymarine |
| Radar | Raymarine |
| Plotter | Raymarine |
| AIS transceiver | yes |
| Camera | yes |



Navigation lights yes

EQUIPMENT

| | |
|-------------------|-------|
| Anchor | yes |
| Anchor chain | yes |
| Windlass | yes |
| Deck wash | yes |
| Sea railing | steel |
| Lifejackets | yes |
| Lifebuoy | yes |
| Wiper | yes |
| Horn | yes |
| Fenders | yes |
| Mooring lines | yes |
| Fire extinguisher | yes |



NOORDERLICHT 50 SPIEGELKOTTER



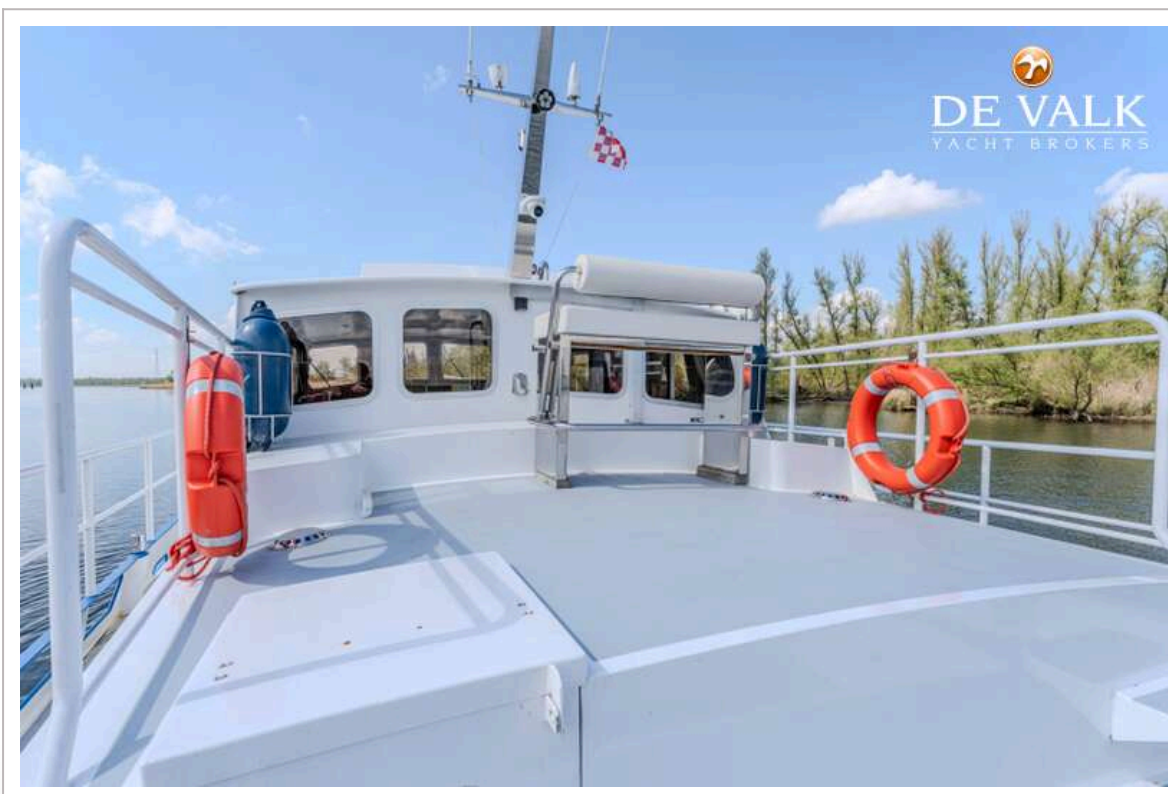
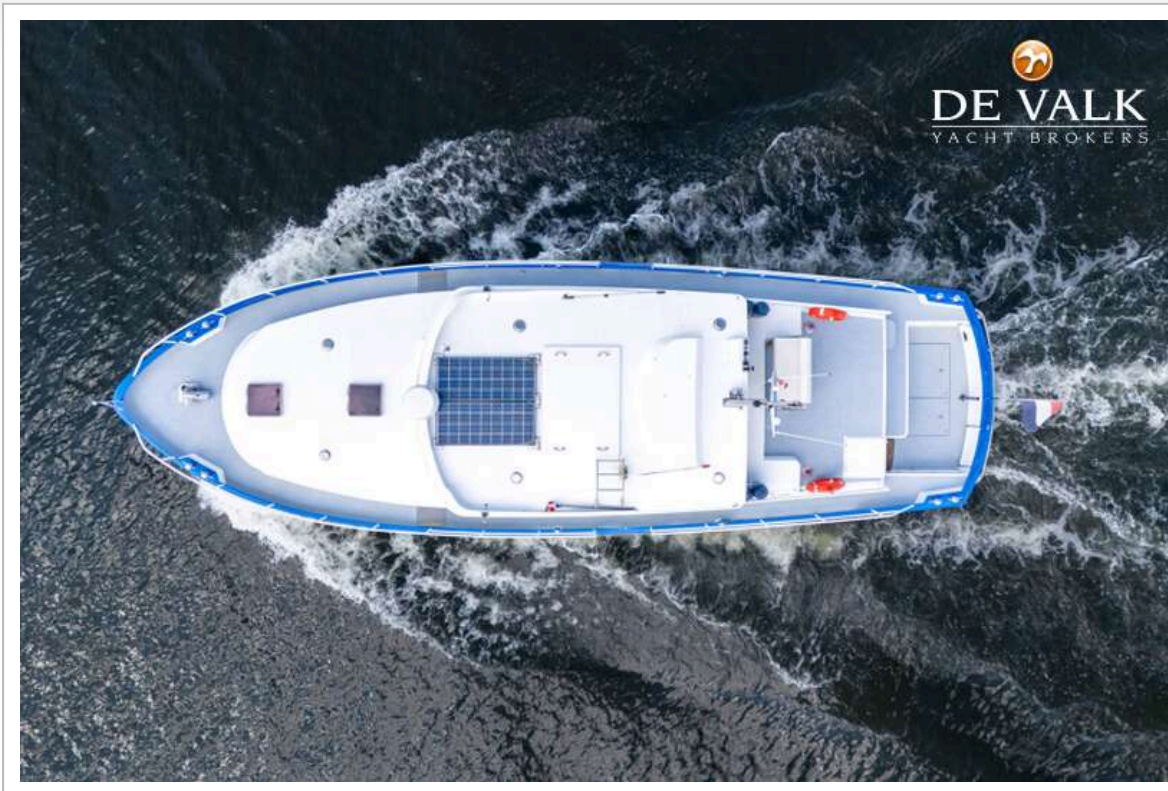
NOORDERLICHT 50 SPIEGELKOTTER



NOORDERLICHT 50 SPIEGELKOTTER



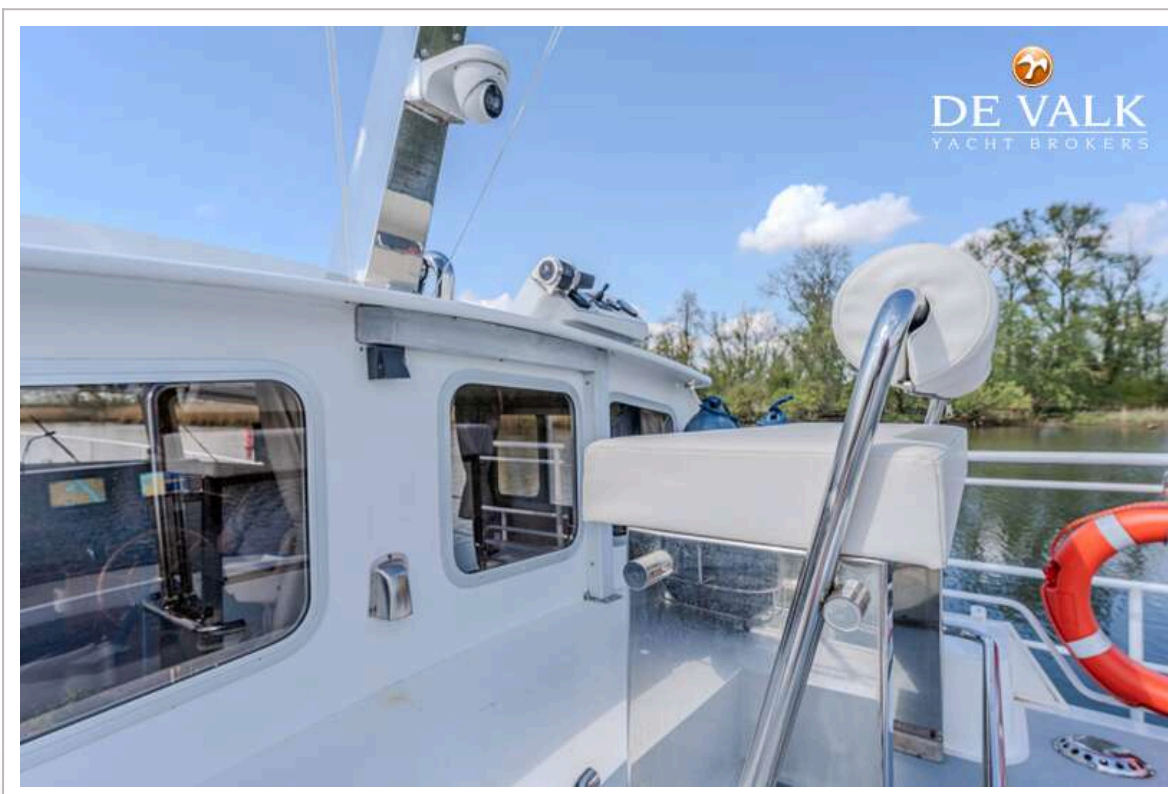
NOORDERLICHT 50 SPIEGELKOTTER



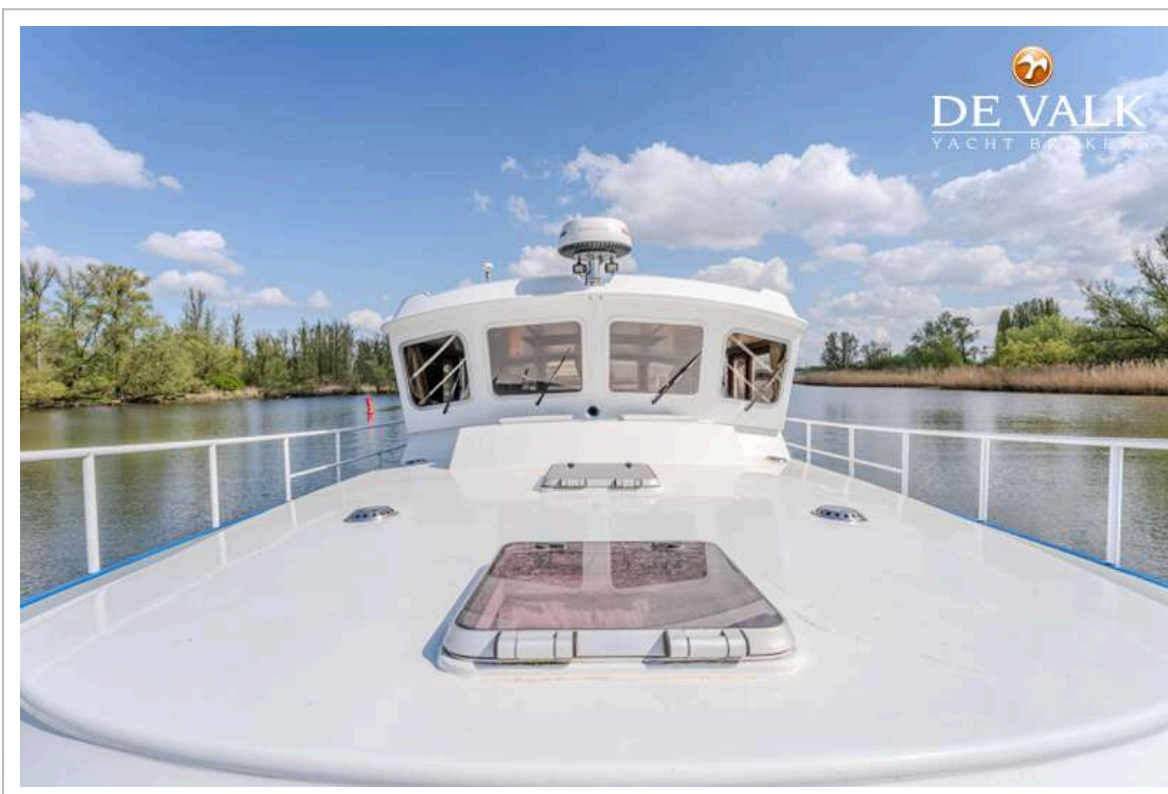
NOORDERLICHT 50 SPIEGELKOTTER



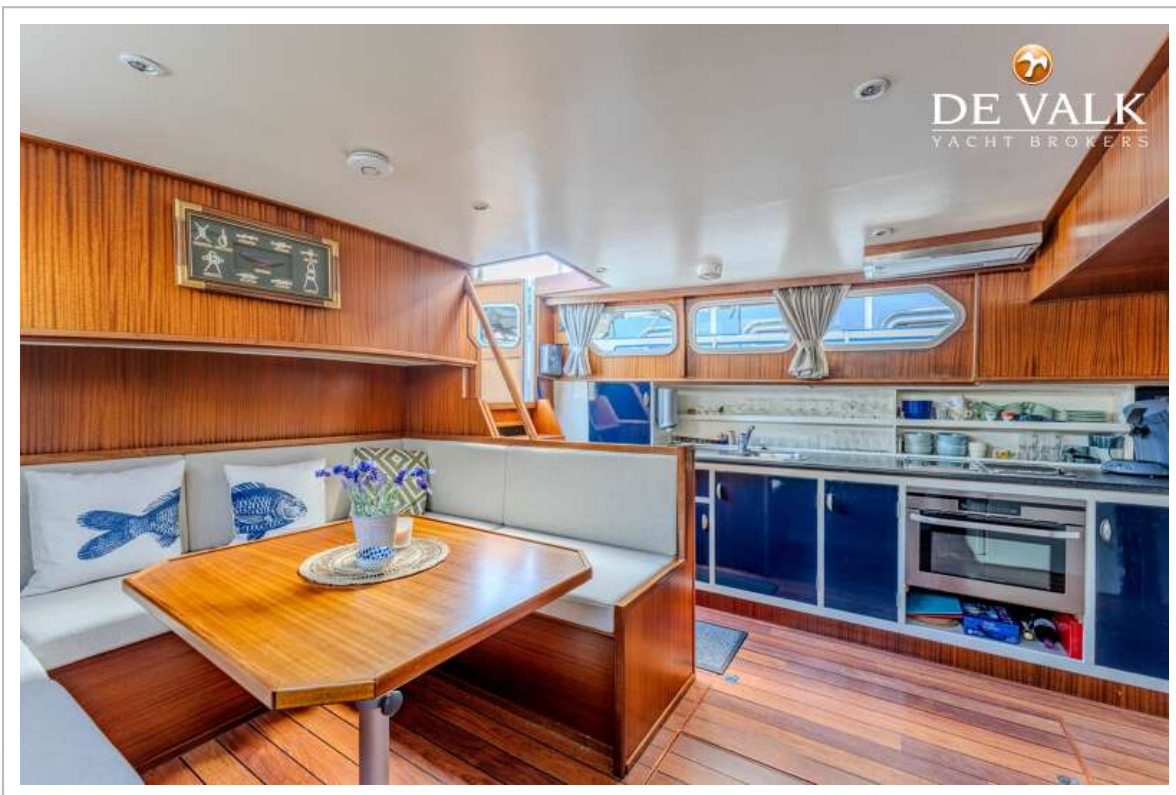
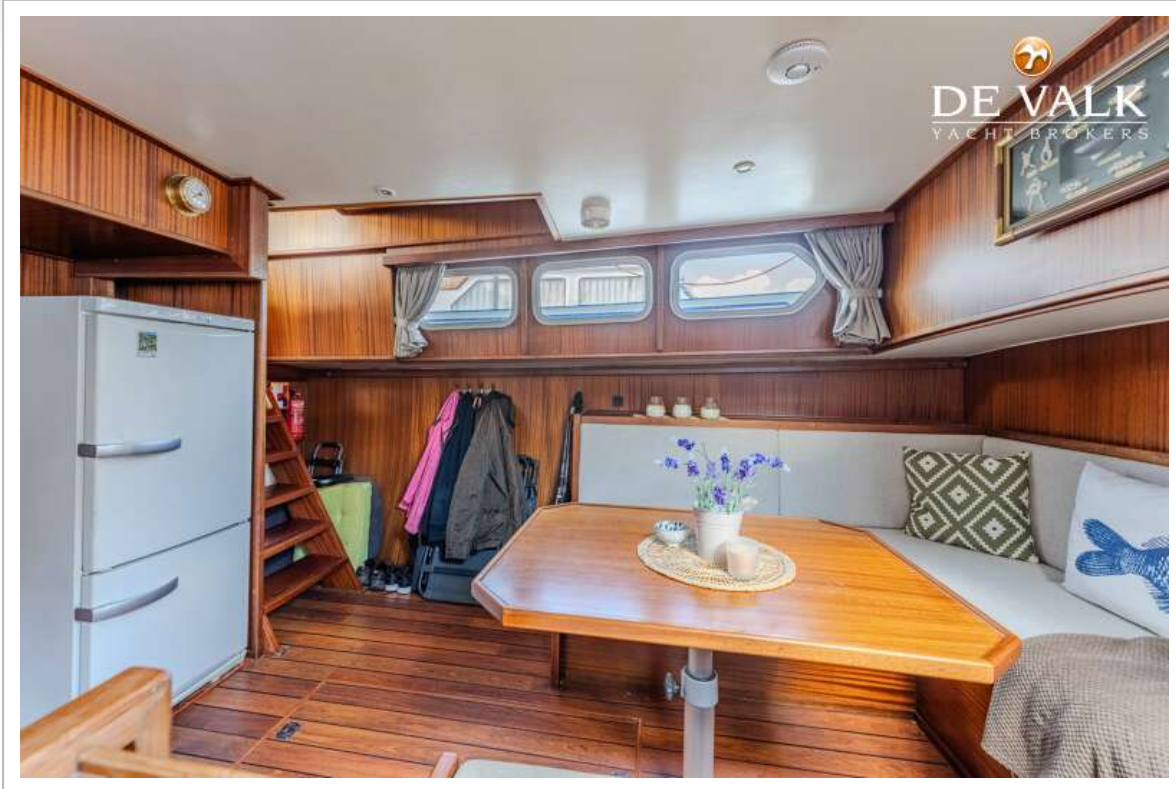
NOORDERLICHT 50 SPIEGELKOTTER



NOORDERLICHT 50 SPIEGELKOTTER



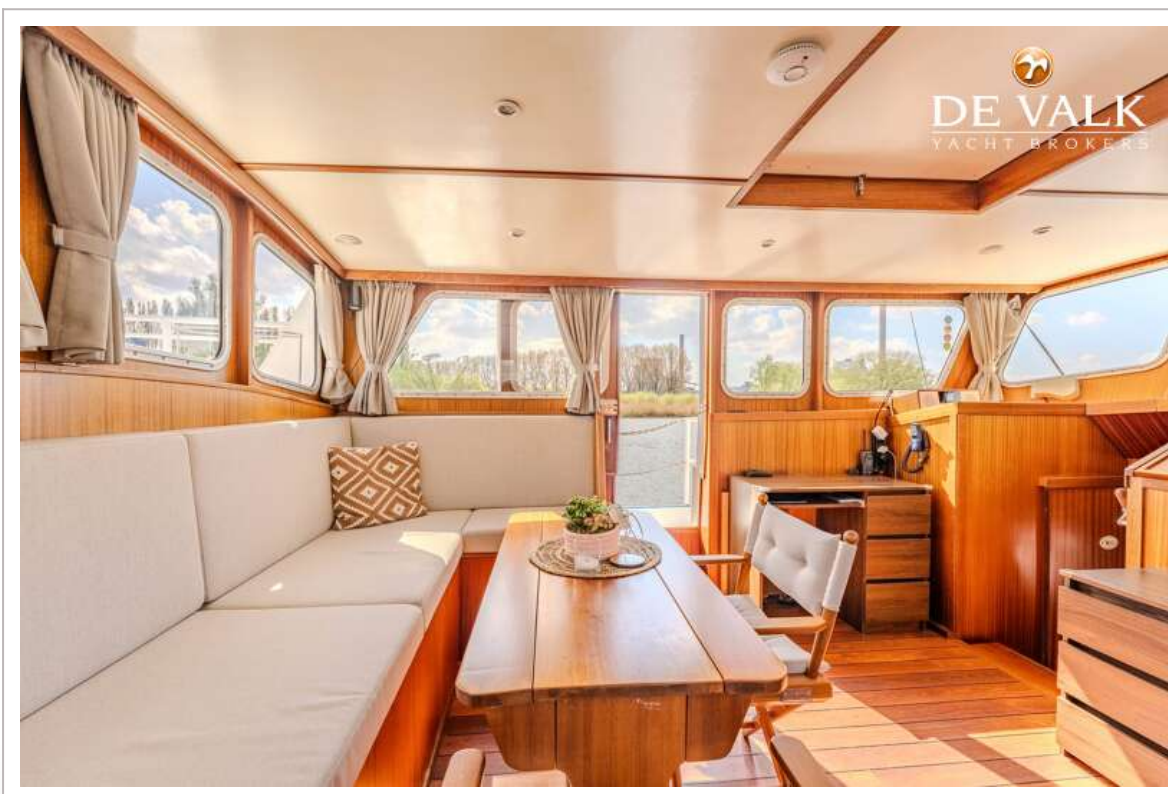
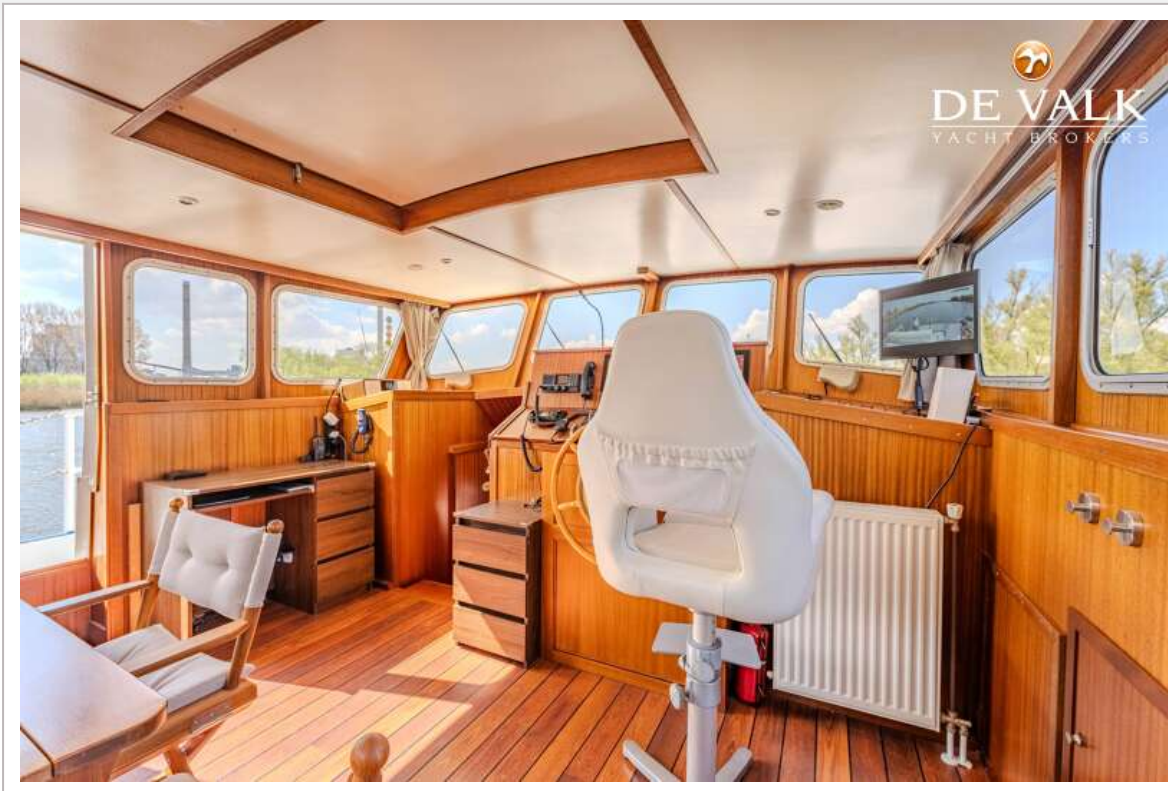
NOORDERLICHT 50 SPIEGELKOTTER



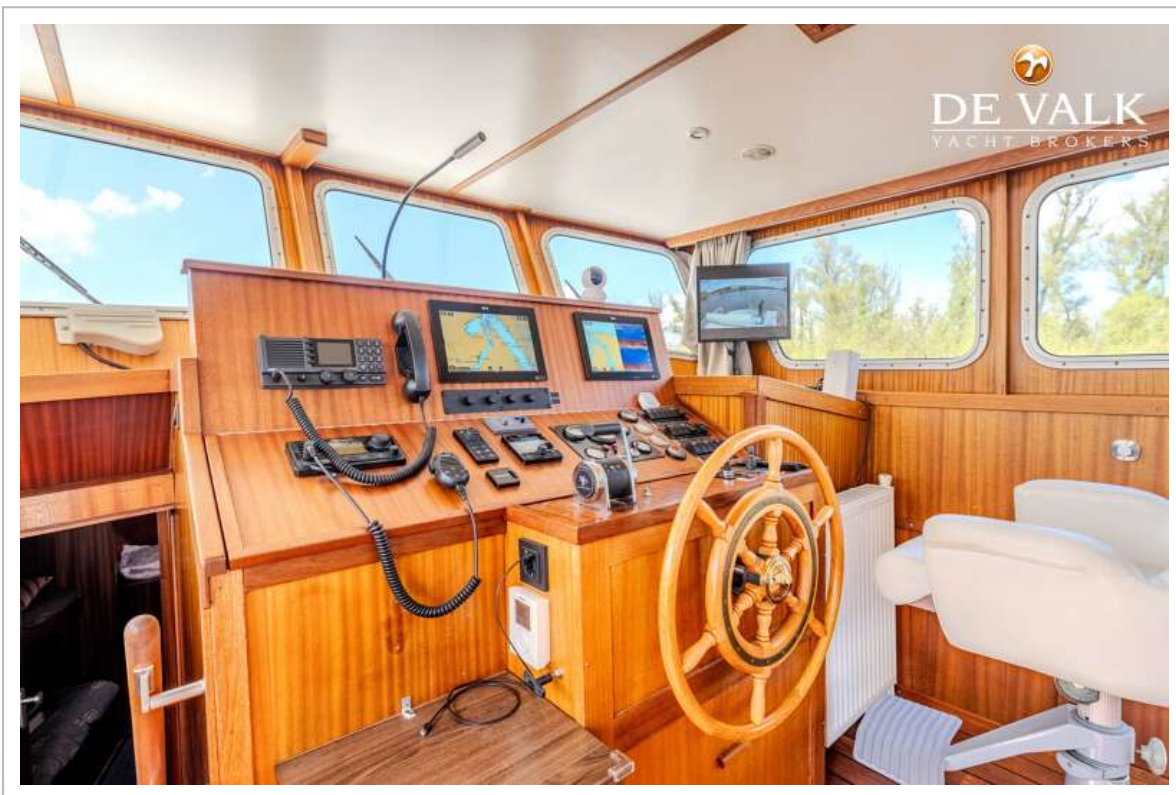
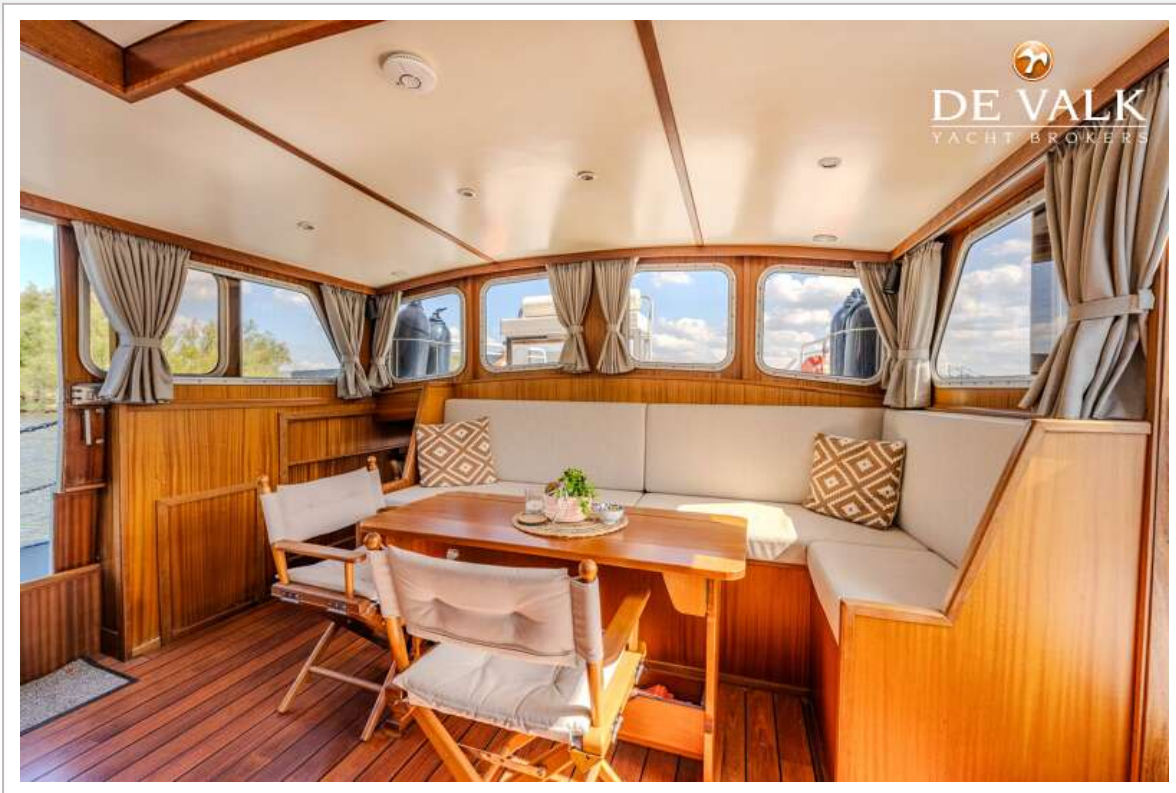
NOORDERLICHT 50 SPIEGELKOTTER



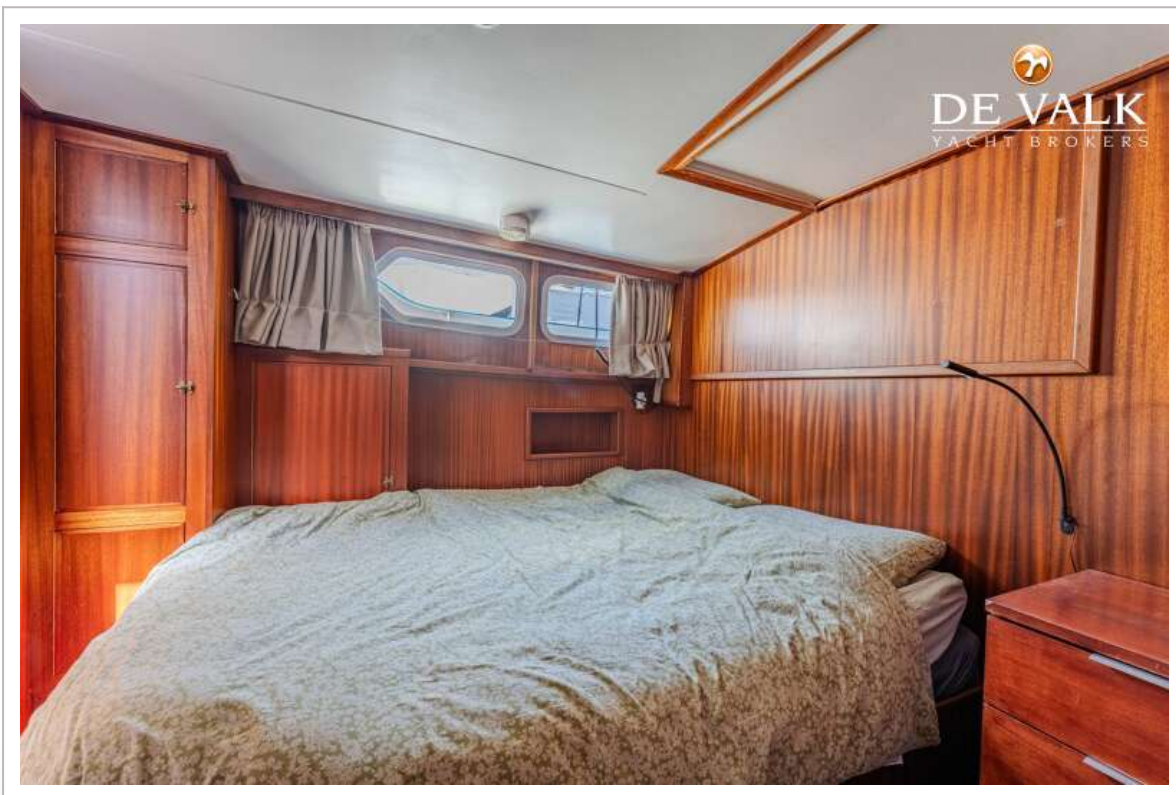
NOORDERLICHT 50 SPIEGELKOTTER



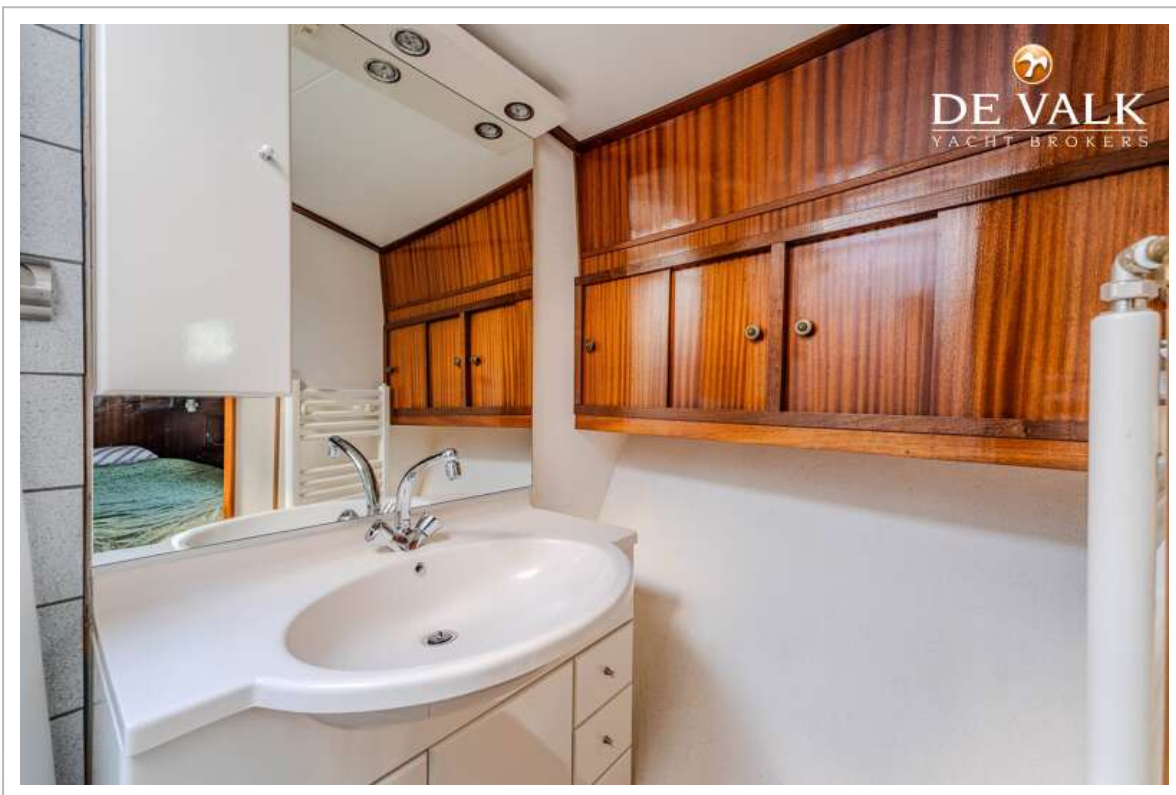
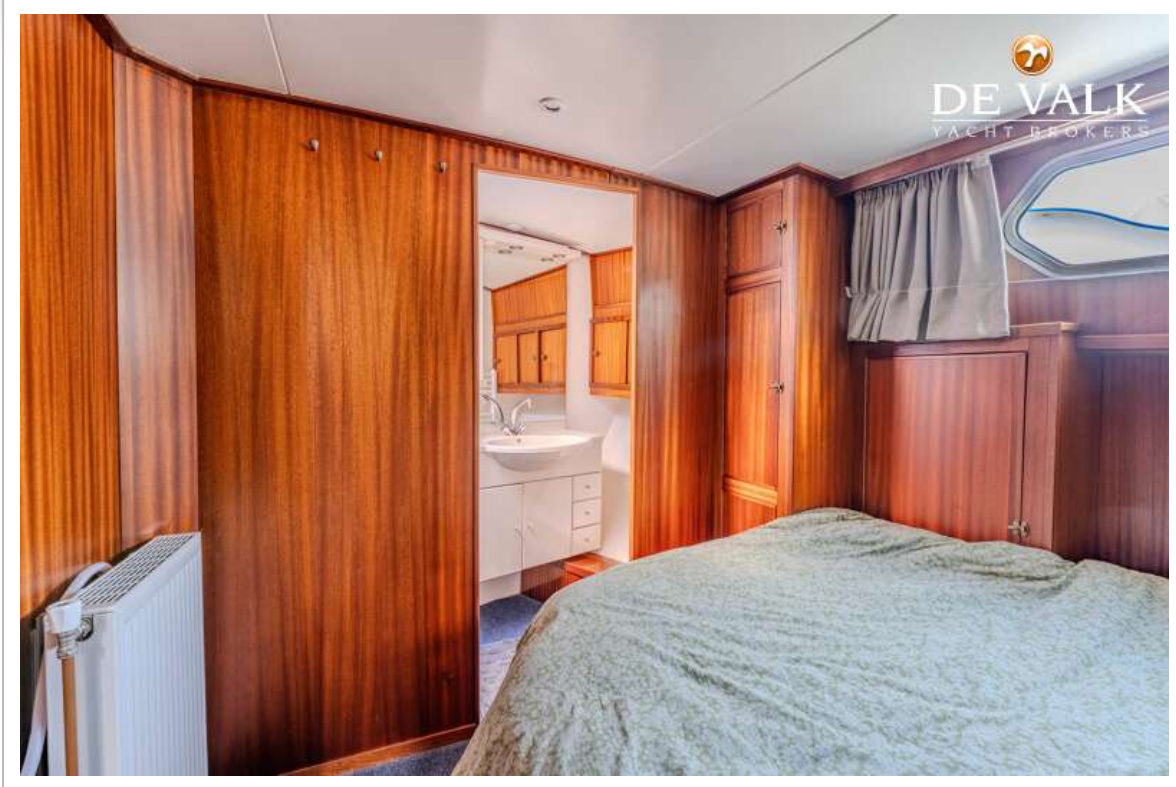
NOORDERLICHT 50 SPIEGELKOTTER



NOORDERLICHT 50 SPIEGELKOTTER



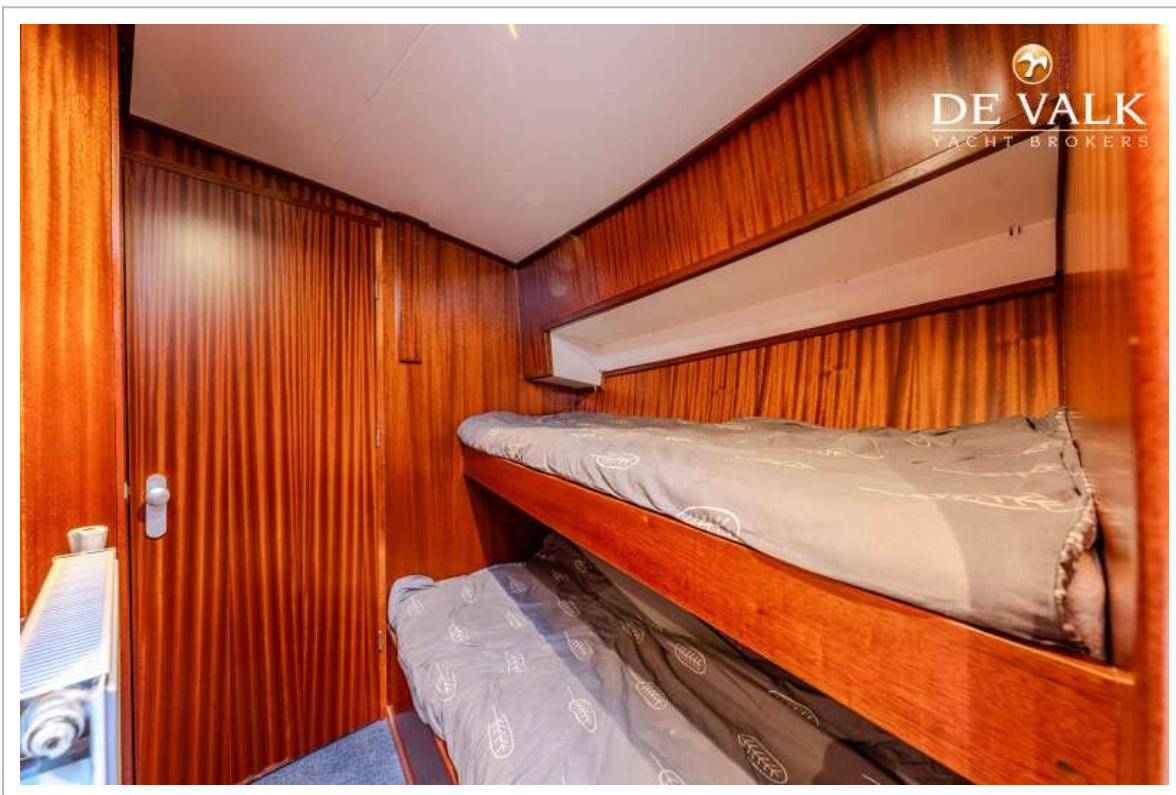
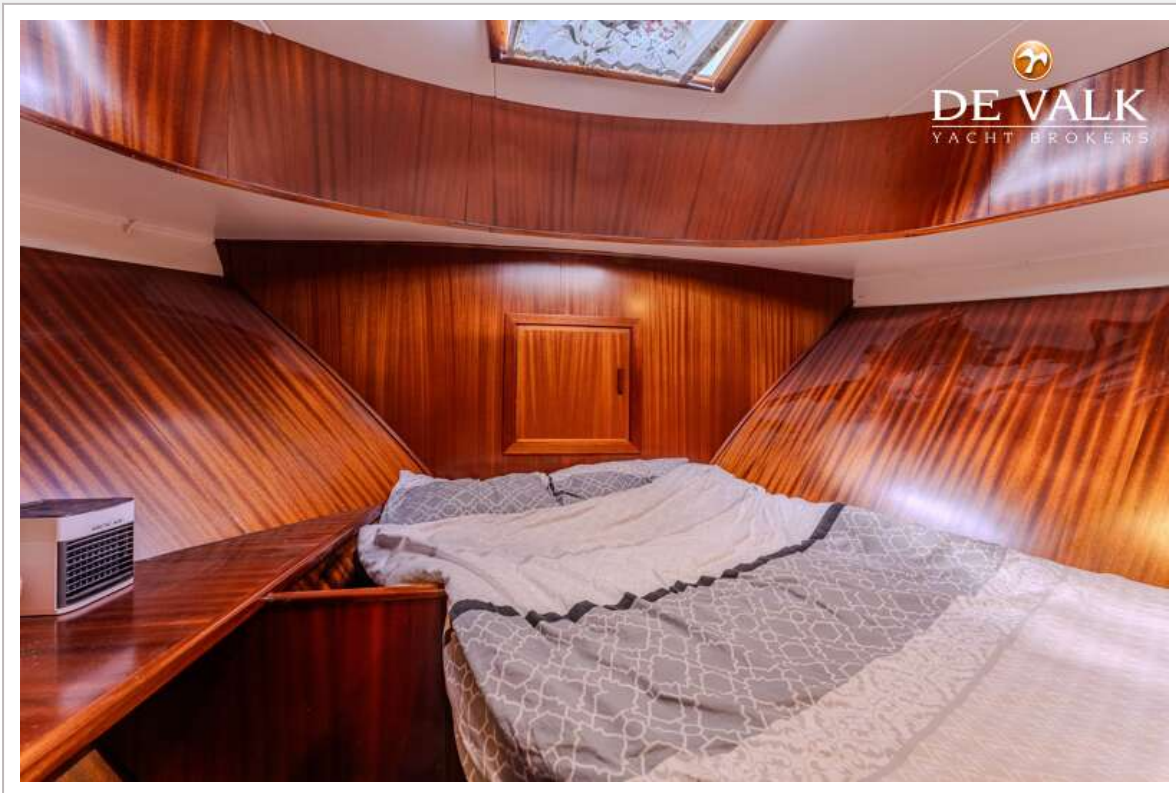
NOORDERLICHT 50 SPIEGELKOTTER



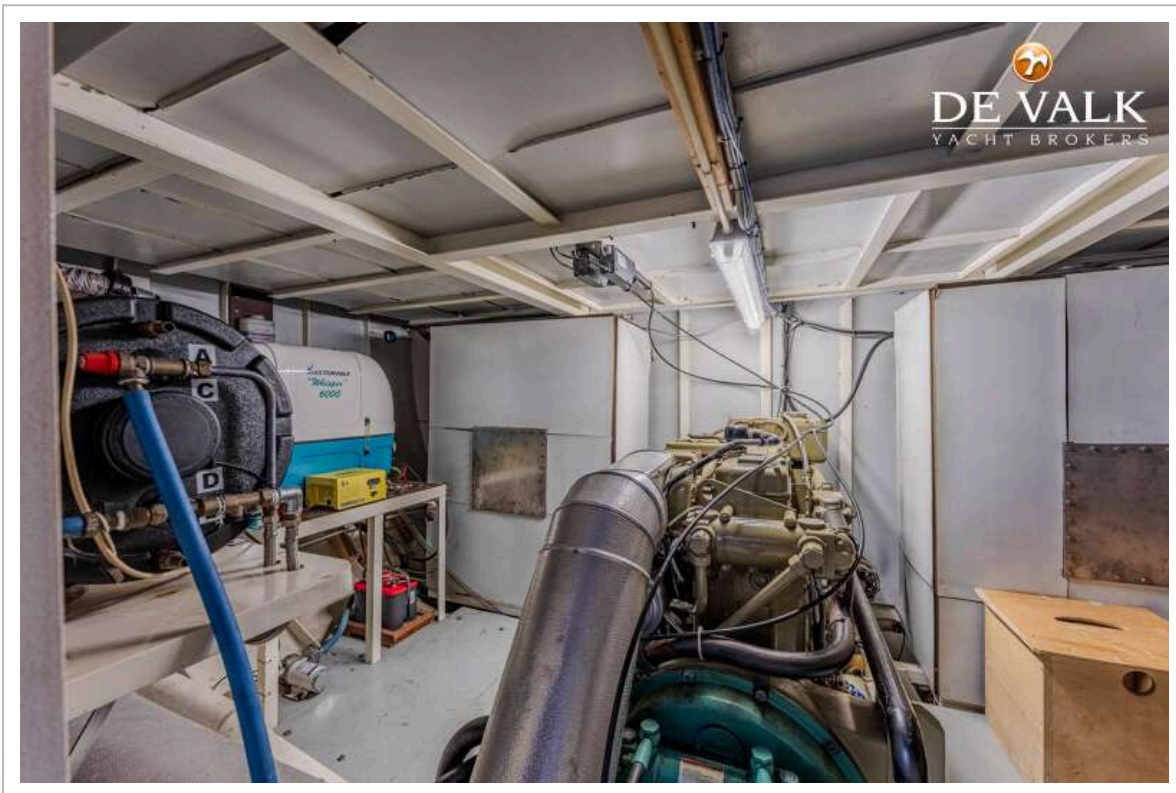
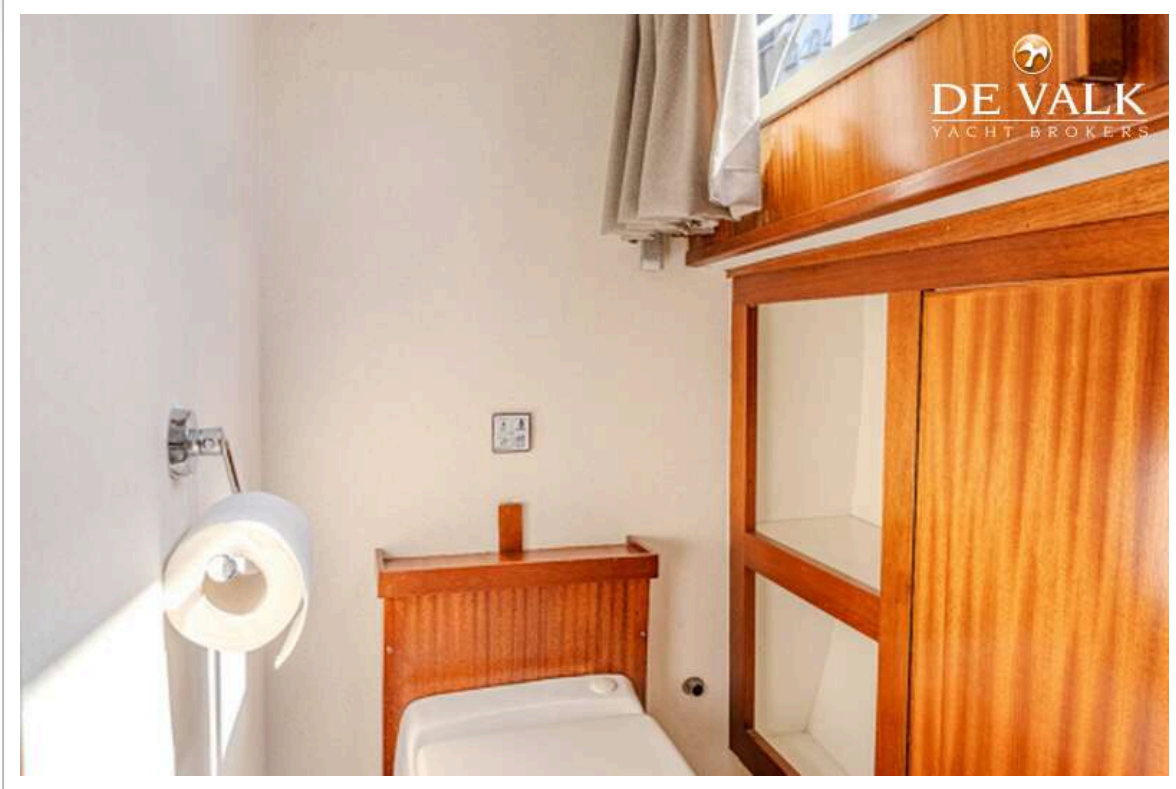
NOORDERLICHT 50 SPIEGELKOTTER



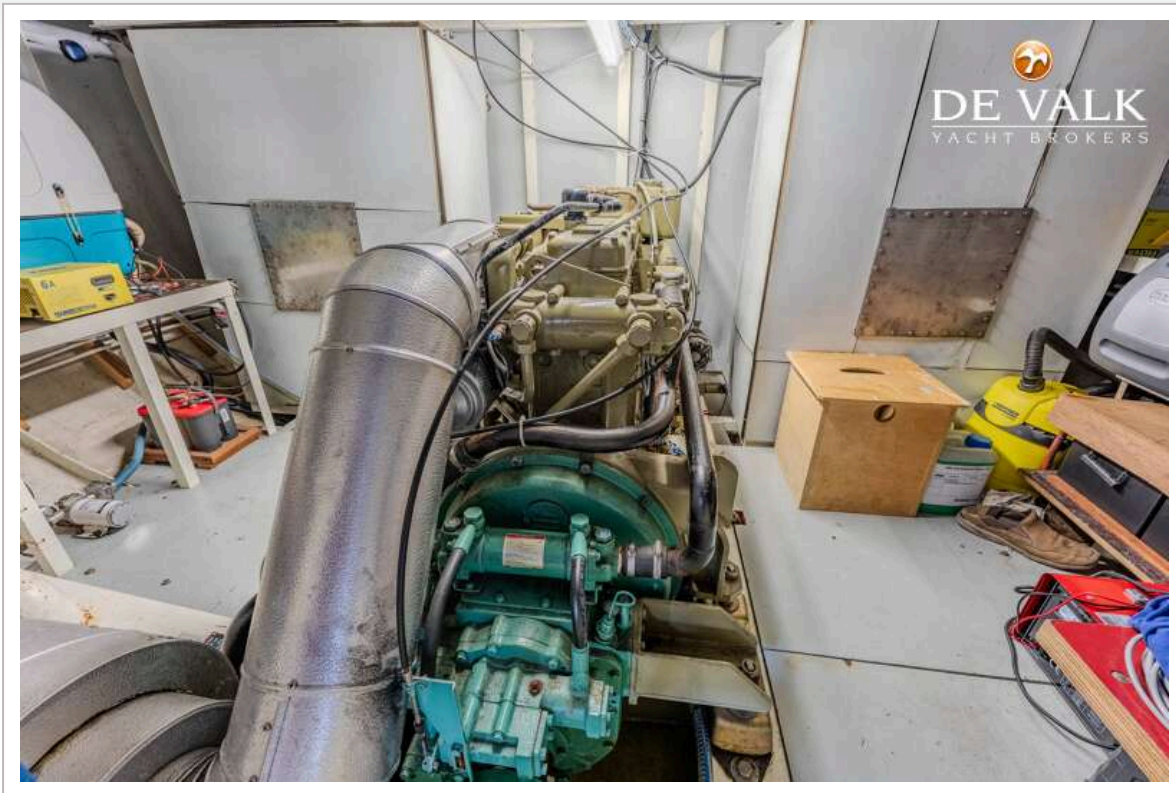
NOORDERLICHT 50 SPIEGELKOTTER

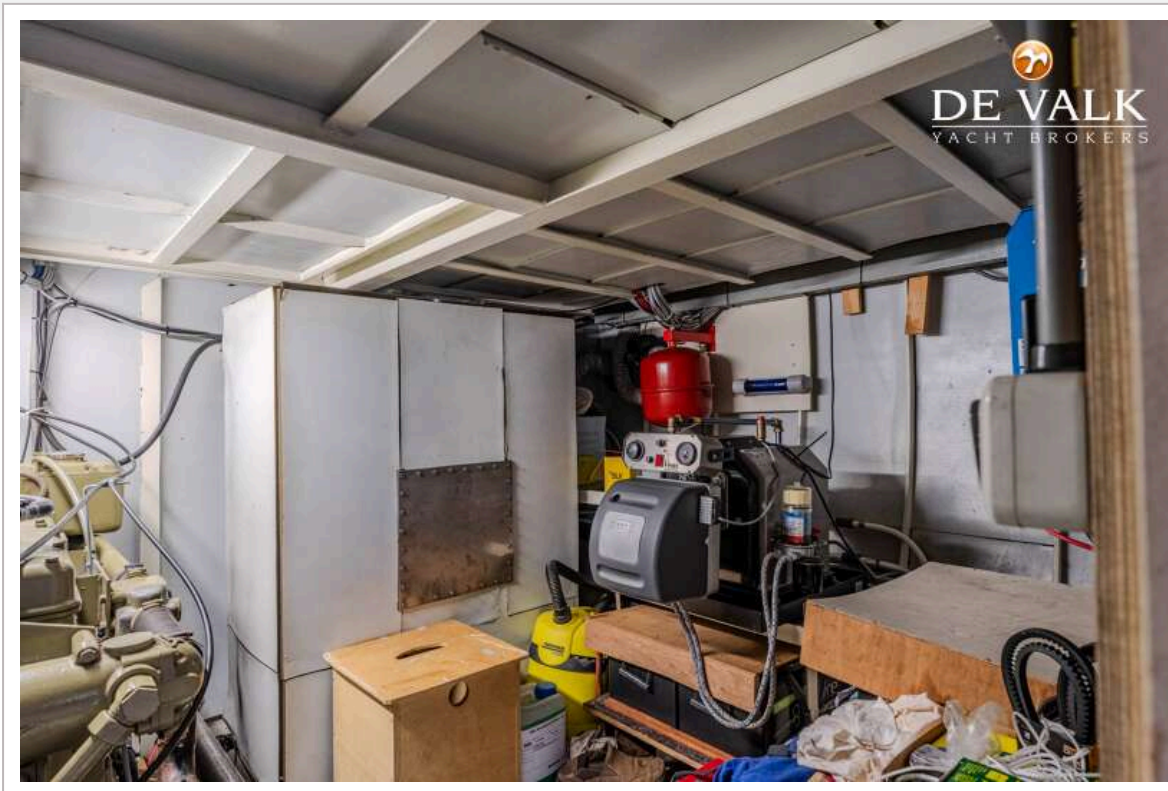


NOORDERLICHT 50 SPIEGELKOTTER



NOORDERLICHT 50 SPIEGELKOTTER






DE VALK
YACHT BROKERS

