



## GRUNO 37 CLASSIC

# GRUNO 37 CLASSIC

## BROKER'S COMMENTS

The Gruno 37 Classic (2016) is a 11.00 m motor yacht featuring a steel hull and a beige finish. Powered by a 95 hp Sole diesel engine. The layout includes two cabins accommodating up to five guests, two bathrooms, a dinette and a galley. Equipped with bow and stern thrusters, Eberspächer heating, Raymarine navigation and an aft deck.

*Julian de Heer*

## SPECIFICATIONS

<b>Dimensions</b>	11.00 x 3.65 x 1.10 (m)	<b>Builder</b>	Jachtwerf Gruno
<b>Built</b>	2016	<b>Cabins</b>	2
<b>Material</b>	Steel	<b>Berths</b>	5
<b>Engine(s)</b>	1 x Sole SM-105 diesel	<b>Hp/Kw</b>	95.00 (hp), 69.92 (kw)
<b>Asking price</b>	€ 193.000 (VAT Not paid)	<b>Lying</b>	

## CONTACT

<b>Sales office</b>	De Valk Loosdrecht B.V.	<b>Telephone</b>	+31 (0)35 582 90 30
<b>Address</b>	't Breukeleveense Meentje 6 1231LM Loosdrecht / Wijdmeren NL	<b>E-mail</b>	loosdrecht@devalk.nl

## DISCLAIMER

These particulars are given in good faith as supplied but cannot be guaranteed.



# GRUNO 37 CLASSIC

## GENERAL

<b>Model</b>	GRUNO 37 CLASSIC
<b>Type</b>	motor yacht
<b>LOA (m)</b>	11,00
<b>Beam (m)</b>	3,65
<b>Draft (m)</b>	1,10
<b>Air draft min (m)</b>	3,70
<b>Year built</b>	2016
<b>Builder</b>	Jachtwerf Gruno
<b>Country</b>	The Netherlands
<b>Displacement (t)</b>	12
<b>CE norm</b>	C
<b>Hull material</b>	steel
<b>Hull colour</b>	beige
<b>Hull shape</b>	hard chine
<b>Superstructure material</b>	steel
<b>Rubbing strake</b>	fender rope
<b>Deck material</b>	steel
<b>Deck finish</b>	non-skid paint
<b>Superstructure deck finish</b>	non-skid paint
<b>Cockpit deck finish</b>	non-skid paint
<b>Window frame</b>	aluminium
<b>Window material</b>	glass
<b>Deckhatch</b>	1x front 1x bathingplatform
<b>Portholes</b>	aluminium
<b>Mast can be lowered</b>	manual
<b>Fuel tank (litre)</b>	stainless steel 250
<b>Fuel tank 2 (litre)</b>	stainless steel 250
<b>Level indicator (fuel tank)</b>	Vetus
<b>Freshwater tank (litre)</b>	yes
<b>Blackwater tank (litre)</b>	yes



# GRUNO 37 CLASSIC

<b>Blackwater tank extraction</b>	deck extraction + pump
<b>Wheel steering</b>	hydraulic
<b>Outside helm position</b>	yes

## ACCOMMODATION

<b>Cabins</b>	2
<b>Berths</b>	5
<b>Interior</b>	birch
<b>Floor</b>	teak
<b>Aft deck</b>	yes
<b>Heating</b>	diesel ducted hot air Eberspächer
<b>Aft Cabin</b>	yes
<b>Dinette</b>	yes
<b>Opening door to aft deck</b>	yes
<b>Galley</b>	yes
<b>Countertop</b>	plastic
<b>Sink</b>	stainless steel
<b>Cooker</b>	calor gas
<b>Microwave</b>	Tarrington House
<b>Fridge</b>	Vitrifrigo
<b>Freezer</b>	Inside fridge
<b>Hot water system</b>	220V + engine Boiler 40L
<b>Water pressure system</b>	electrical
<b>Owners cabin</b>	double bed
<b>Wardrobe</b>	hanging and shelves
<b>Bathroom</b>	en suite
<b>Toilet</b>	en suite
<b>Toilet system</b>	electric Dometic
<b>Wash basin</b>	in the bathroom
<b>Shower</b>	en suite Seperate from toilet
<b>Guest cabin 1</b>	double bed



# GRUNO 37 CLASSIC

<b>Wardrobe</b>	hanging and shelves
<b>Bathroom</b>	en suite
<b>Toilet</b>	en suite Dometic
<b>Toilet system</b>	electric
<b>Wash basin</b>	at the toilet
<b>Shower</b>	separate

## MACHINERY

<b>No of engines</b>	1
<b>Make</b>	Sole
<b>Type</b>	SM-105
<b>HP</b>	95
<b>kW</b>	69.92
<b>Fuel</b>	diesel
<b>Year installed</b>	2016
<b>Engine hours</b>	3947
<b>Engine cooling system</b>	freshwater heat exchanger
<b>Drive</b>	shaft
<b>Engine controls</b>	bowden cable
<b>Bowthruster</b>	electric Vetus
<b>Sternthruster</b>	electric Vetus
<b>Exhaust</b>	watercooled
<b>Propeller type</b>	fixed
<b>Propeller shaft material</b>	stainless steel
<b>Shaft lubrication</b>	water
<b>Electric bilge pump</b>	yes
<b>Electrical installation</b>	12V/220V
<b>Start battery</b>	1x Varta 12V 80Ah
<b>Service battery</b>	2x Trimaxx 12V 180Ah
<b>Bowthruster battery</b>	yes
<b>Sternthruster battery</b>	yes



# GRUNO 37 CLASSIC

Battery monitor	Victron
Battery charger/inverter	Victron
Shorepower	with cable

## NAVIGATION

Depth sounder/log	Raymarine
Rudder angle indicator	VDO
Navigation lights	yes

## EQUIPMENT

Sprayhood	yes
Cockpit cover	yes
Cockpit cushions	yes
Cockpit table	yes
Cockpit chairs	Moveable bench
Bathing platform	yes
Boarding ladder	stainless steel
Transom door	yes
Anchor	yes
Anchor chain	yes
Windlass	manual Lowfrance
Sea railing	stainless steel
Grab rail (superstructure)	stainless steel
Railing side opening gates	Both sides
Wiper	3x Vetus
Horn	electric
Fenders	yes
Mooring lines	yes
TV	Orion
Radio	Pioneer
Cockpit speakers	Fusion



Speakers in salon

Pioneer



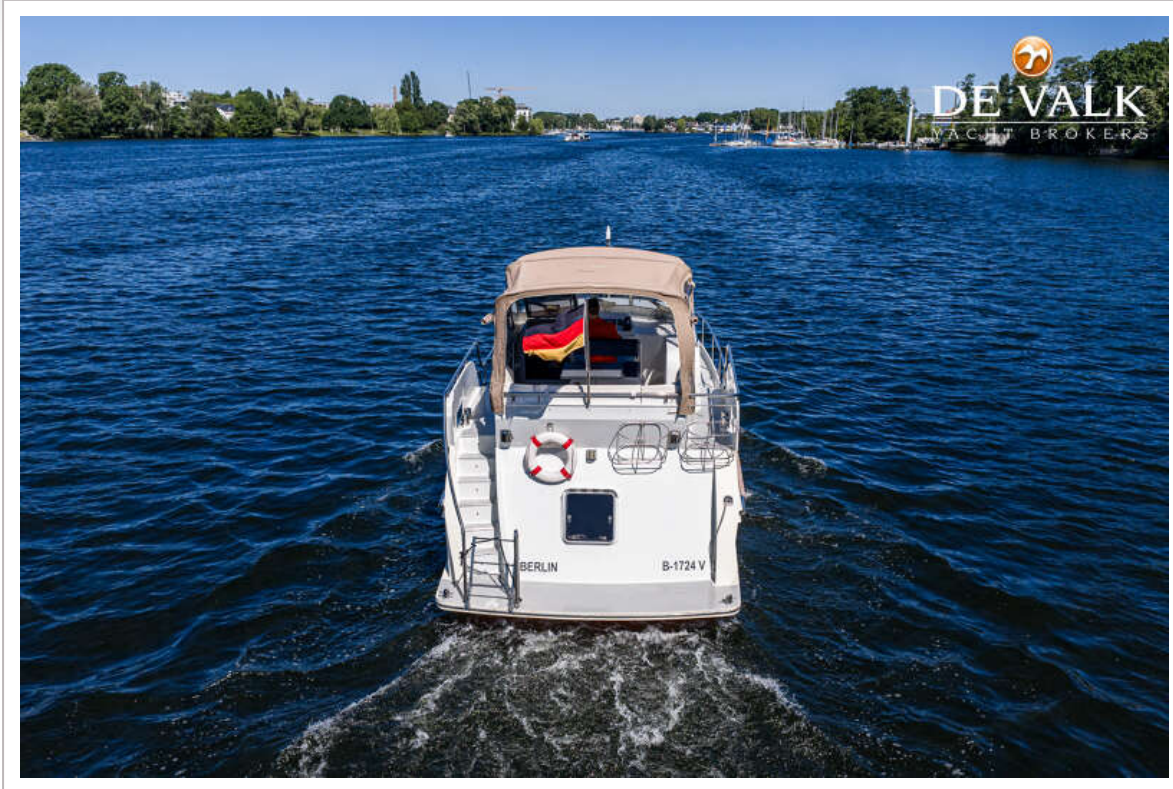
# GRUNO 37 CLASSIC



# GRUNO 37 CLASSIC



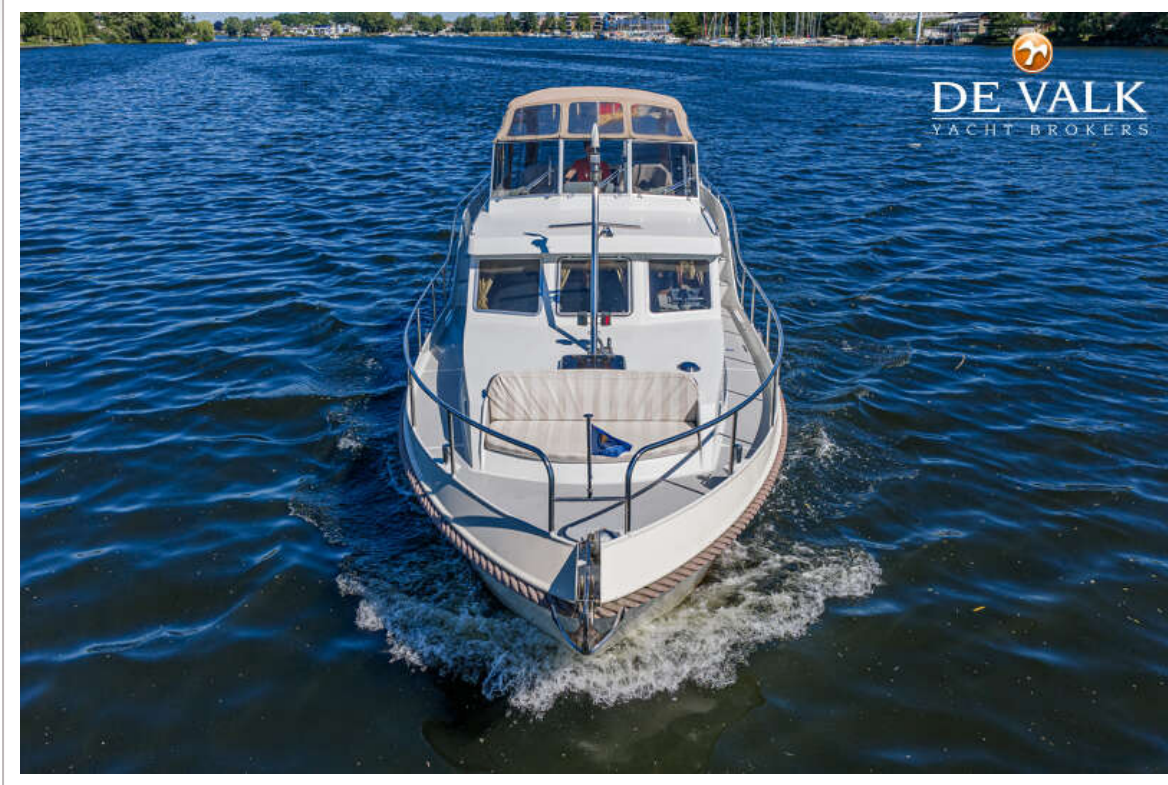
# GRUNO 37 CLASSIC



# GRUNO 37 CLASSIC



# GRUNO 37 CLASSIC



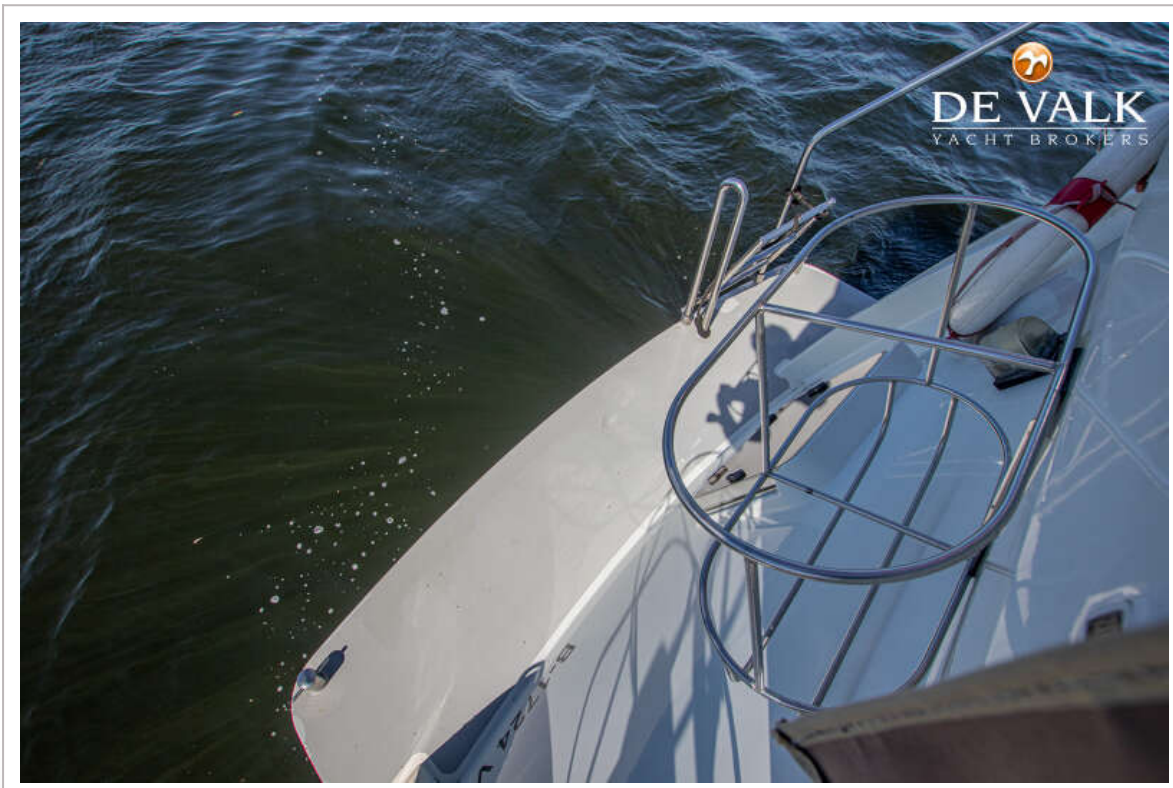
# GRUNO 37 CLASSIC



# GRUNO 37 CLASSIC



# GRUNO 37 CLASSIC



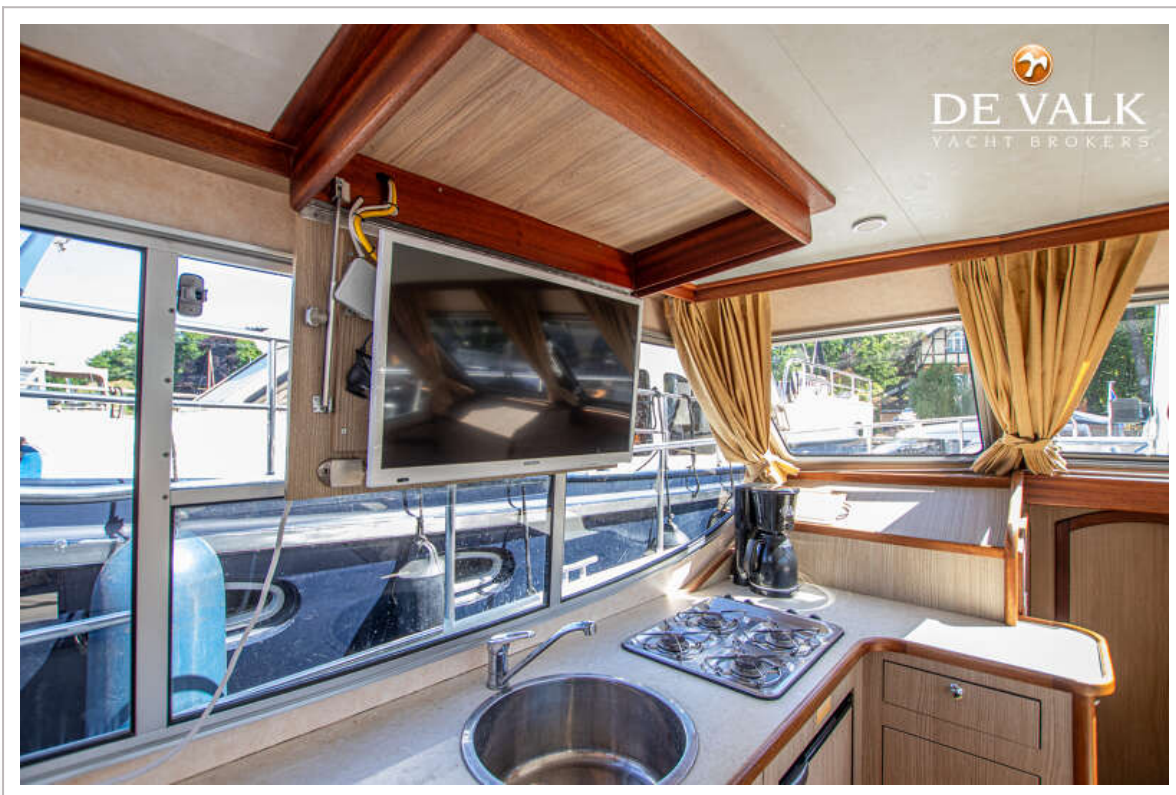
# GRUNO 37 CLASSIC



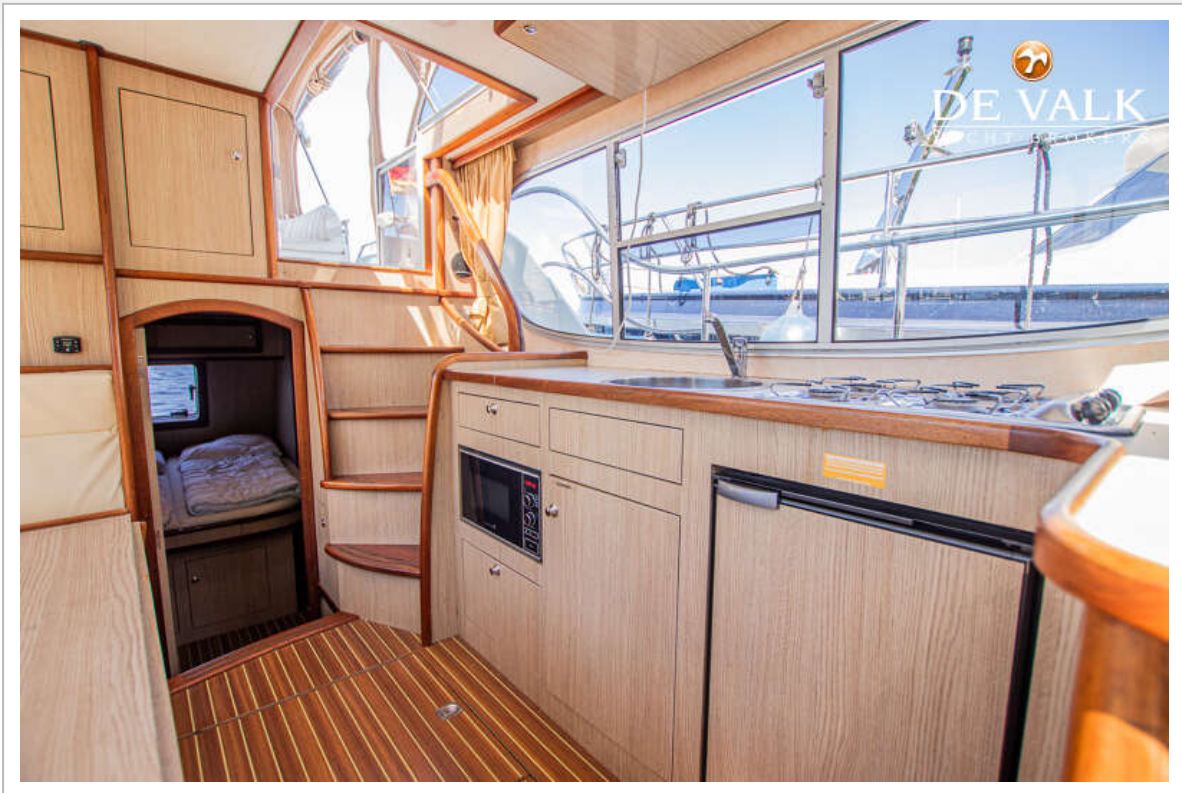
# GRUNO 37 CLASSIC



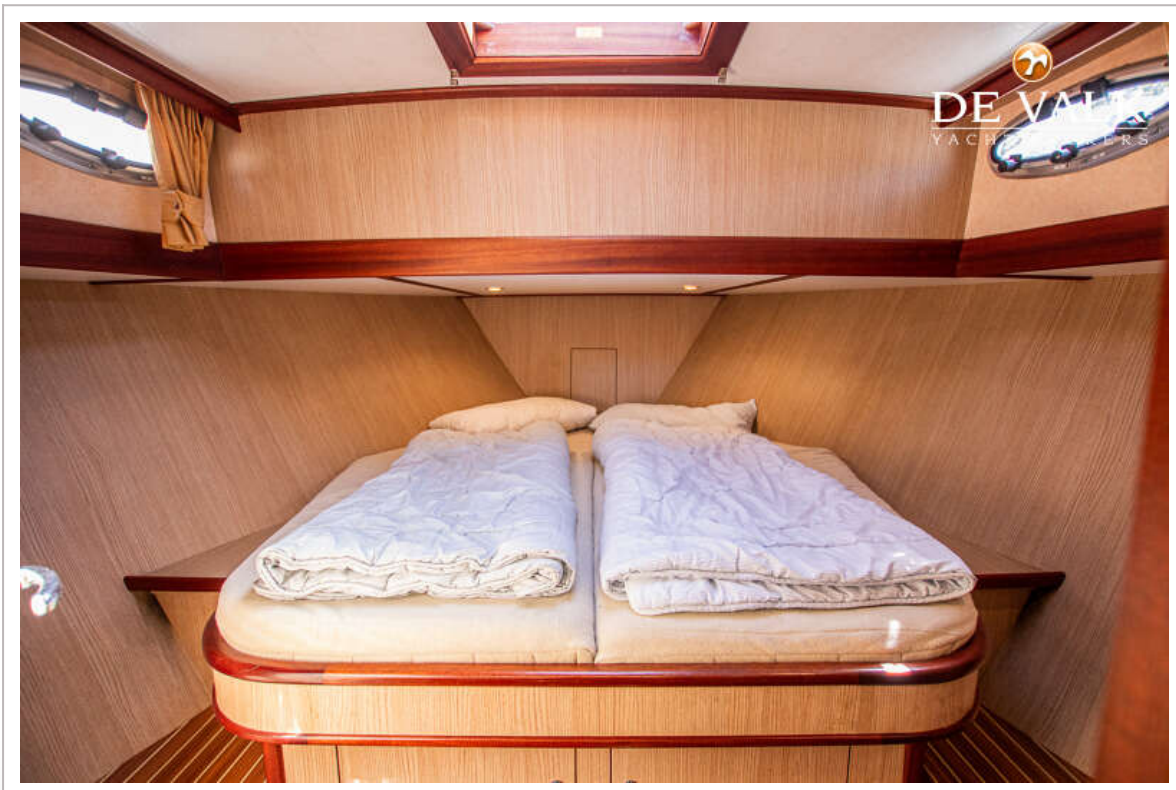
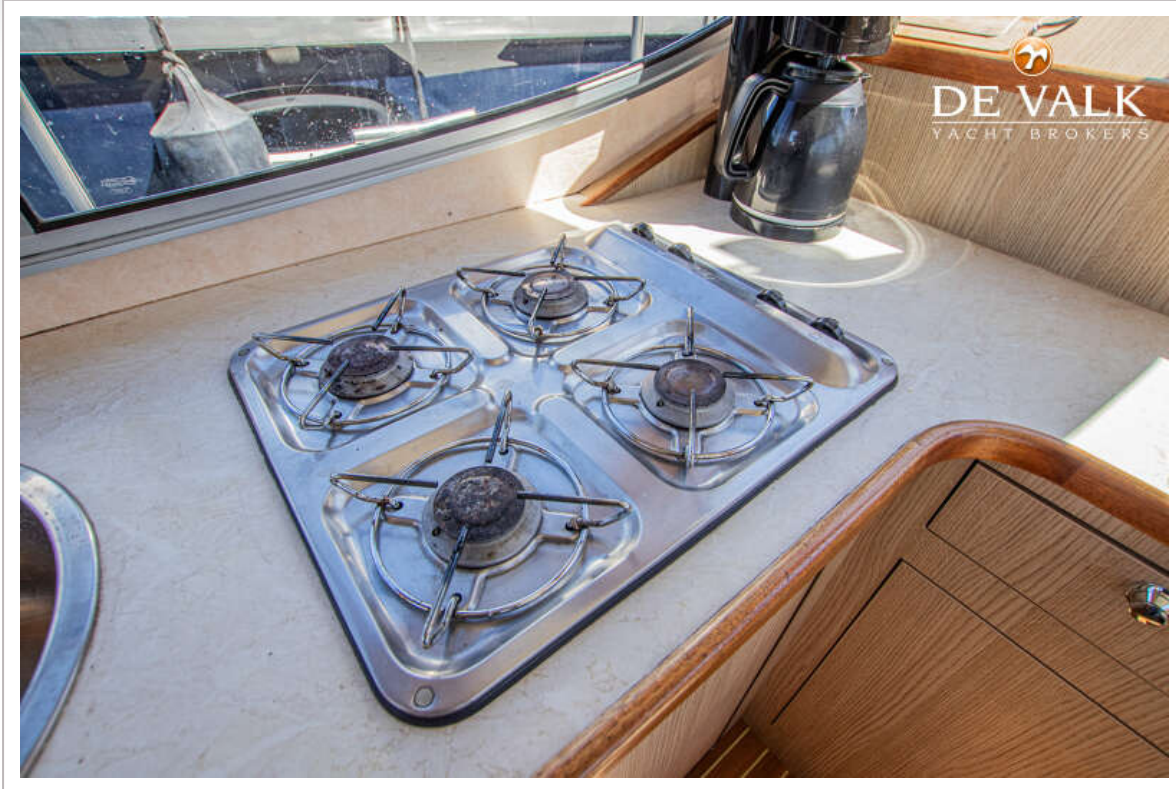
# GRUNO 37 CLASSIC



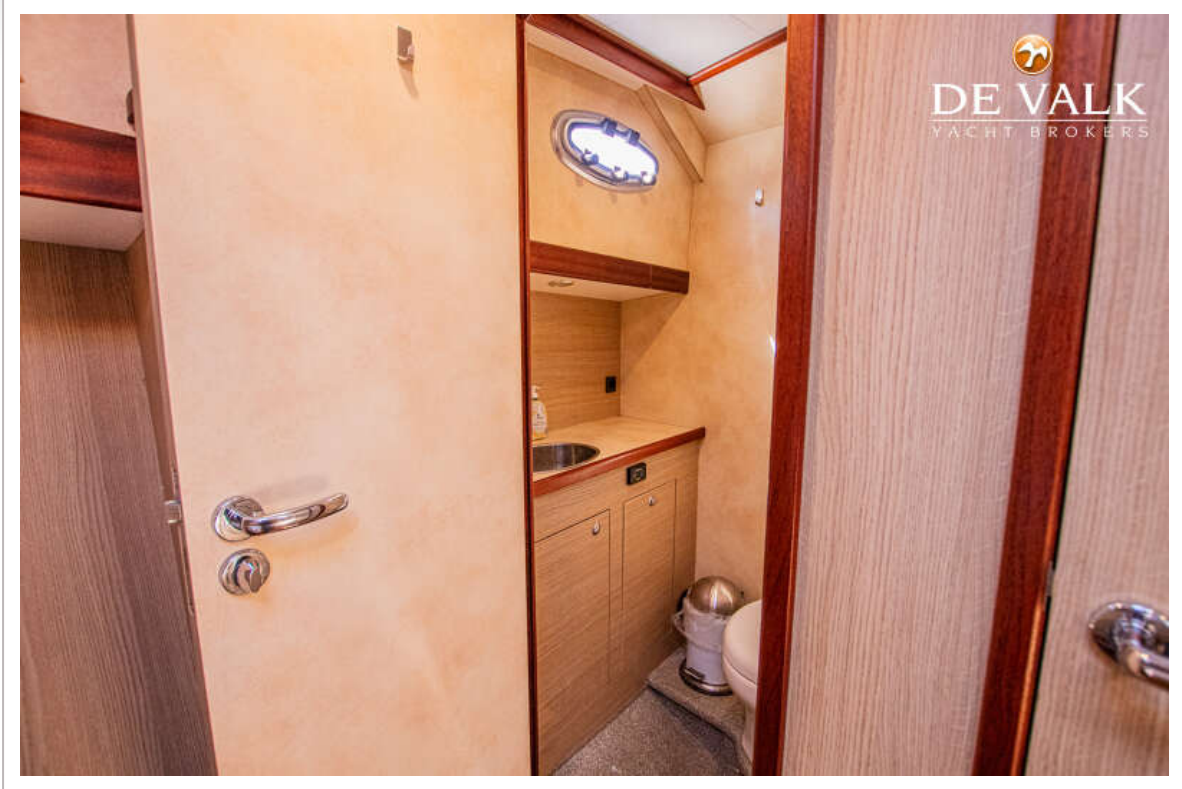
# GRUNO 37 CLASSIC



# GRUNO 37 CLASSIC



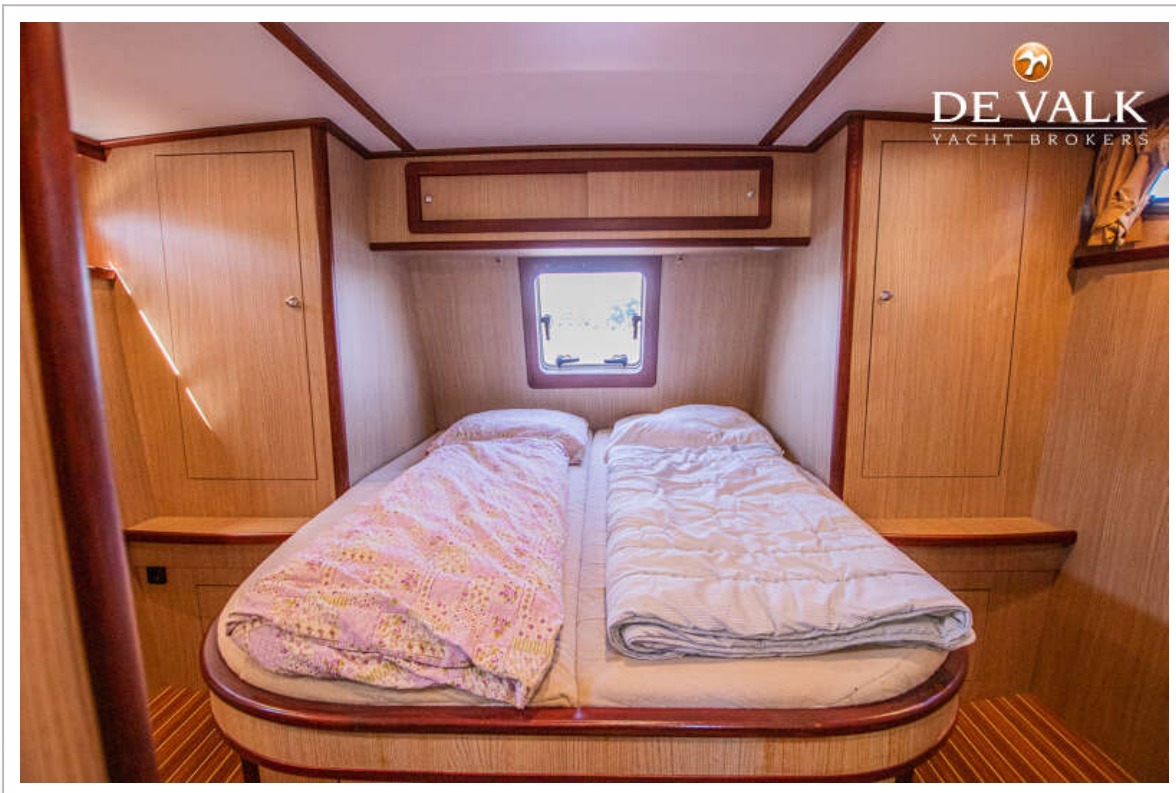
# GRUNO 37 CLASSIC



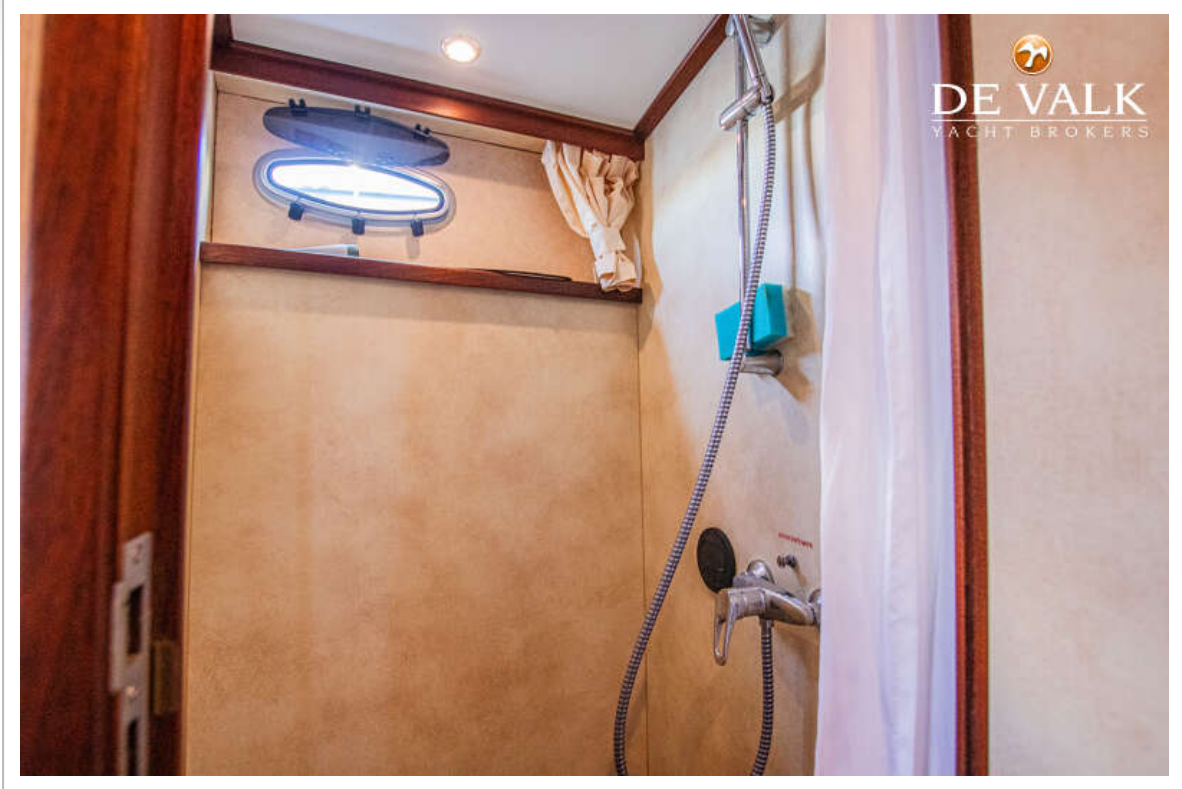
# GRUNO 37 CLASSIC



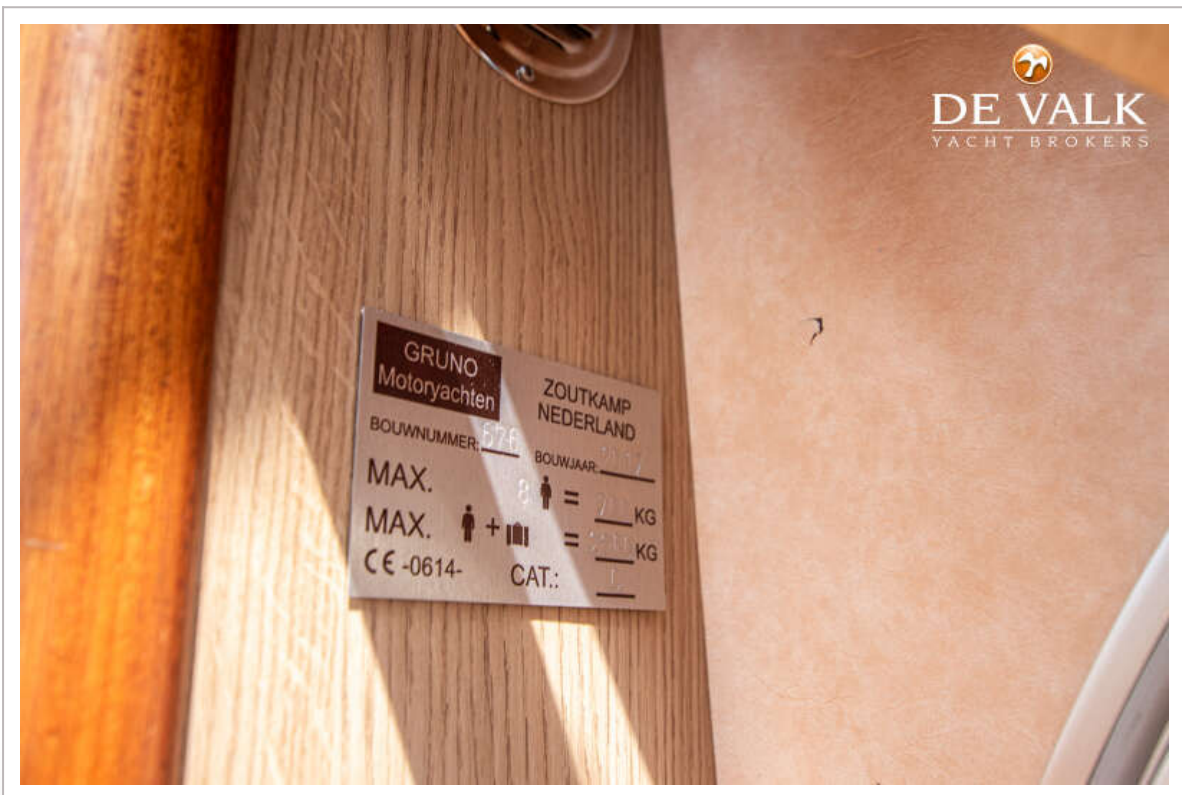
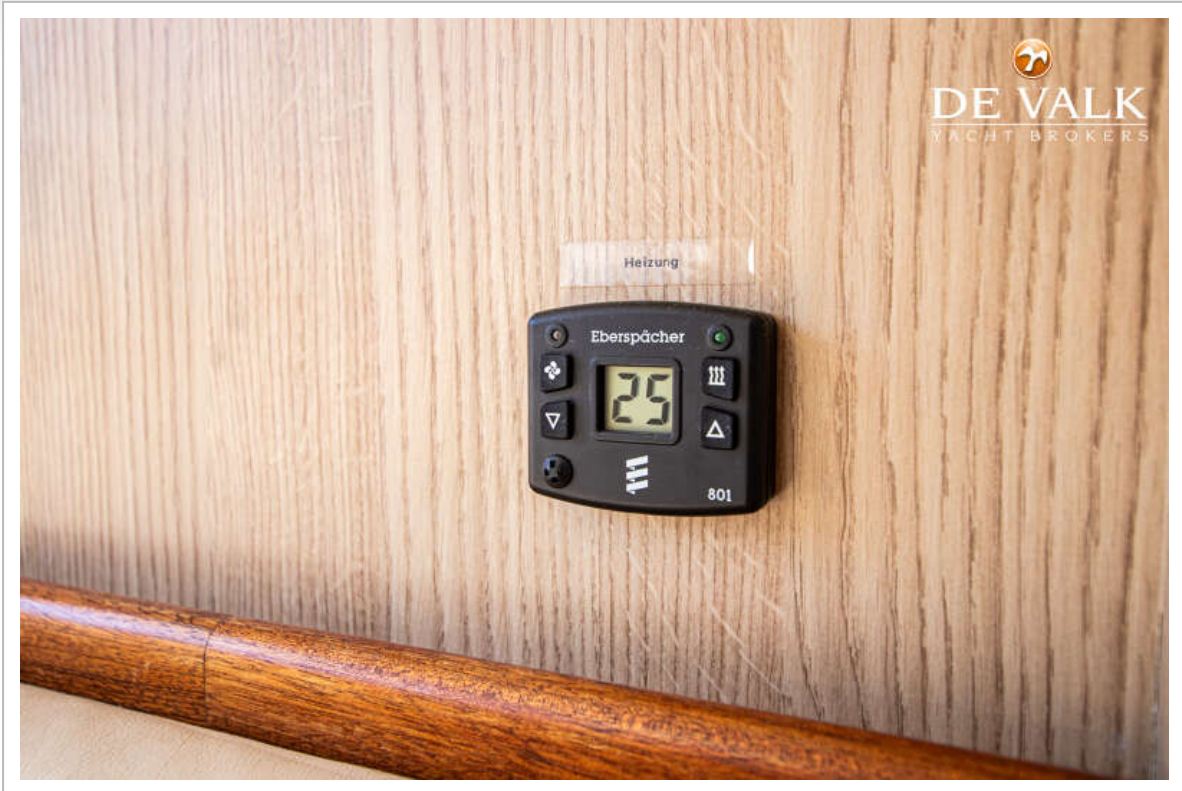
# GRUNO 37 CLASSIC



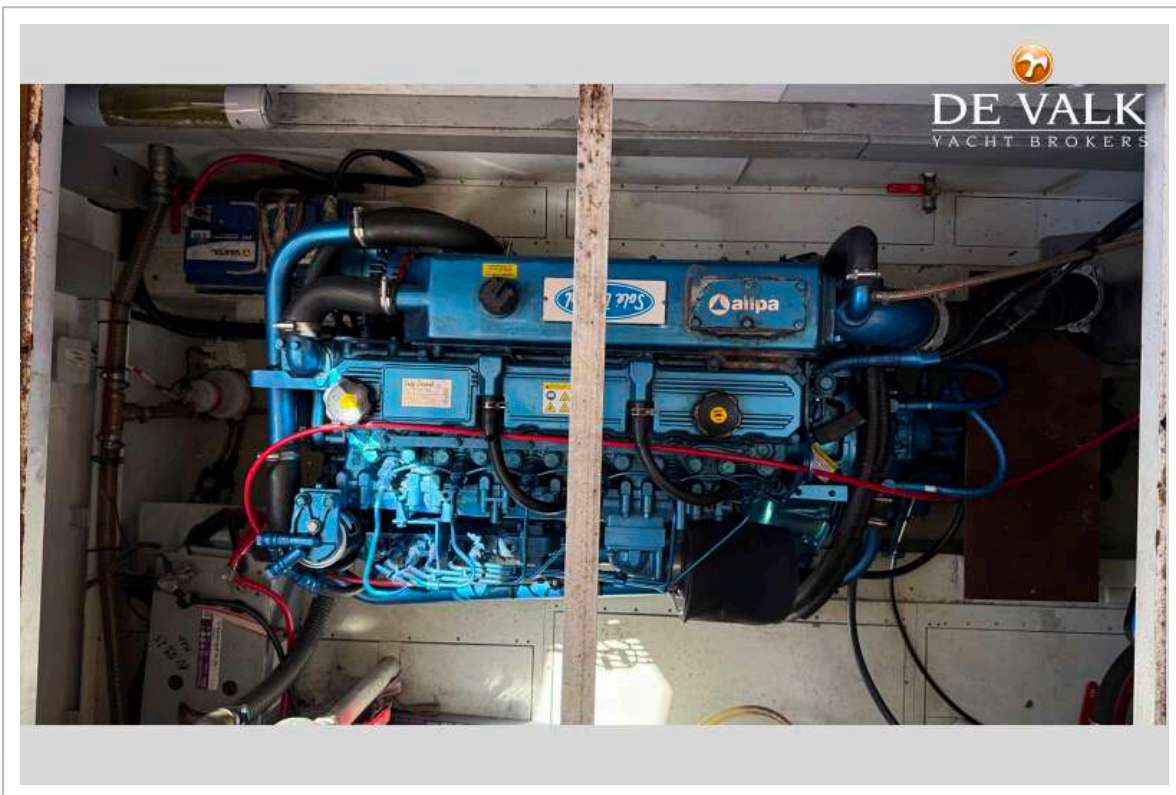
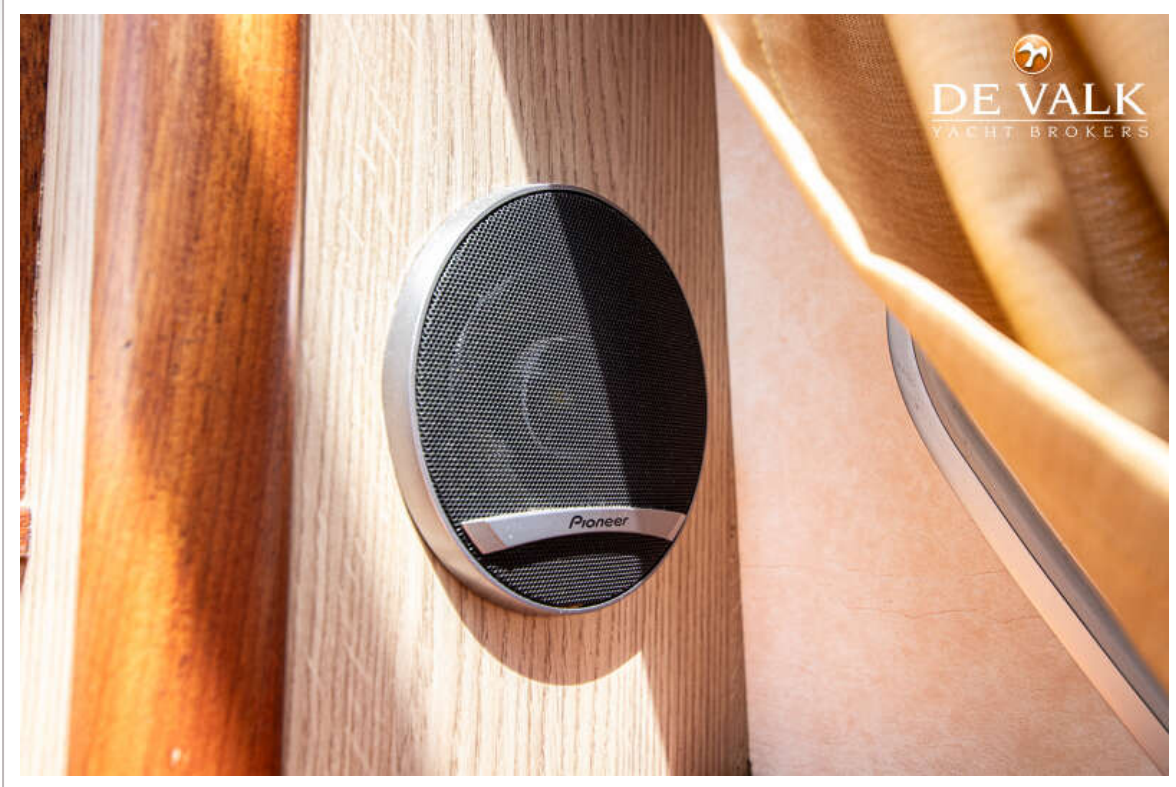
# GRUNO 37 CLASSIC



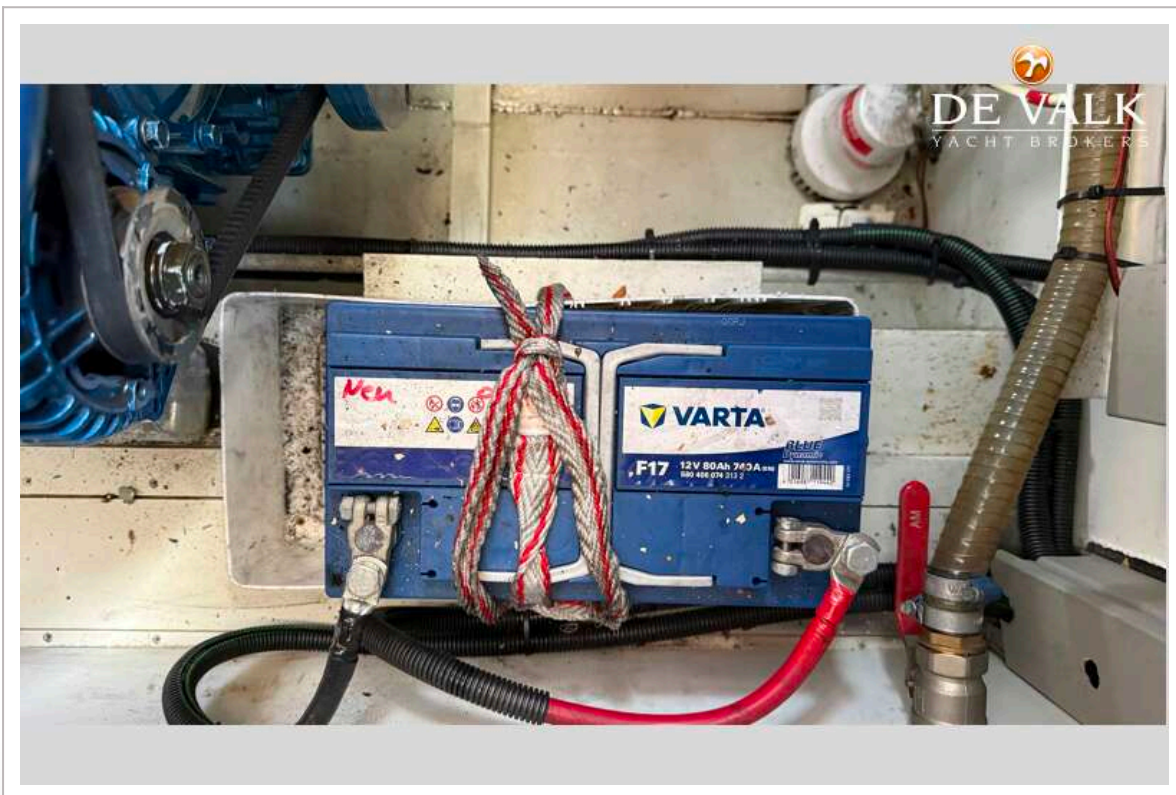
# GRUNO 37 CLASSIC



# GRUNO 37 CLASSIC



# GRUNO 37 CLASSIC



# GRUNO 37 CLASSIC

