



DE VALK
YACHT BROKERS



PEDRO MARIN 30



DE VALK
YACHT BROKERS

BROKER'S COMMENTS

The Pedro Marin 30 (2006) is a 9.10 m motor yacht featuring a steel hull and a purple finish. Powered by a 86 hp Perkins Sabre diesel engine. The layout includes one cabin accommodating up to four guests, a saloon and a galley. Equipped with a bow thruster, Webasto heating, Raymarine navigation and a cockpit.

Julian de Heer

SPECIFICATIONS

Dimensions	9.10 x 3.40 x 0.95 (m)	Builder	Pebro Werf
Built	2006	Cabins	1
Material	Steel	Berths	4
Engine(s)	1 x Perkins Sabre M 92 B diesel	Hp/Kw	86.00 (hp), 63.30 (kw)
Asking price	€ 89.000 (VAT Not paid)	Lying	elsewhere / Not at sales office

CONTACT

Sales office	De Valk Loosdrecht B.V.	Telephone	+31 (0)35 582 90 30
Address	't Breukeleveense Meentje 6 1231LM Loosdrecht / Wijdmeren NL	E-mail	loosdrecht@devalk.nl

DISCLAIMER

These particulars are given in good faith as supplied but cannot be guaranteed.



GENERAL

Model	PEDRO MARIN 30
Type	motor yacht
LOA (m)	9,10
LWL (m)	7,95
Beam (m)	3,40
Draft (m)	0,95
Air draft (m)	3,70
Headroom (m)	2,00
Year built	2006
Builder	Pebro Werf
Country	The Netherlands
Displacement (t)	7
CE norm	C
Hull material	steel
Hull colour	purple
Hull shape	multi hard chine
Superstructure material	steel
Rubbing strake	rubber
Deck material	steel
Deck finish	non-skid paint
Superstructure deck finish	non-skid paint
Cockpit deck finish	non-skid paint
Window frame	aluminium
Window material	glass
Deckhatch	2x
Portholes	aluminium 10x
Mast can be lowered	manual
Fuel tank (litre)	stainless steel 380 ltr. Material??
Freshwater tank (litre)	225 ltr. Material??
Level indicator (freshwater)	yes



Blackwater tank (litre)	190 ltr. Material??
Level indicator (blackwater)	yes
Blackwater tank extraction	deck extraction + pump
Wheel steering	hydraulic Ultraflex
Outside helm position	yes

ACCOMMODATION

Cabins	1
Berths	4
Interior	teak
Floor	carpet
Saloon	yes
Headroom saloon (m)	2,00
Heating	diesel ducted hot air Webasto
Dinette to convert into berth	yes
Opening door to cockpit	yes
Galley	yes
Countertop	Duropal
Sink	stainless steel Double
Cooker	calor gas 2 Burner
Fridge	80 ltr.
Hot water system	220V + engine 45 ltr.
Water pressure system	electrical
Owners cabin	double bed
Bed length (m)	yes
Wardrobe	yes
Toilet	shared
Toilet system	manual
Wash basin	at the toilet
Shower	shared
Guest cabin 1	double bed



Wardrobe hanging and shelves

MACHINERY

No of engines 1
Make Perkins
Type Sabre M 92 B
HP 86
kW 63.30
Fuel diesel
Maximum speed (kn) 8,5
Engine hours 7557
Engine cooling system freshwater heat exchanger
Drive shaft
Engine controls bowden cable
Gearbox hydraulic
Bowthruster electric Maxxwel
Exhaust watercooled
Propeller type fixed
Propeller shaft material stainless steel
Shaft lubrication water
Electrical installation 12 V DC 230 V AC
Batteries 1x
Battery charger Victron Blue Smart charger
Shorepower with cable

NAVIGATION

Depth sounder/log Raymarine ST60+
Wind vane steering install. VDO

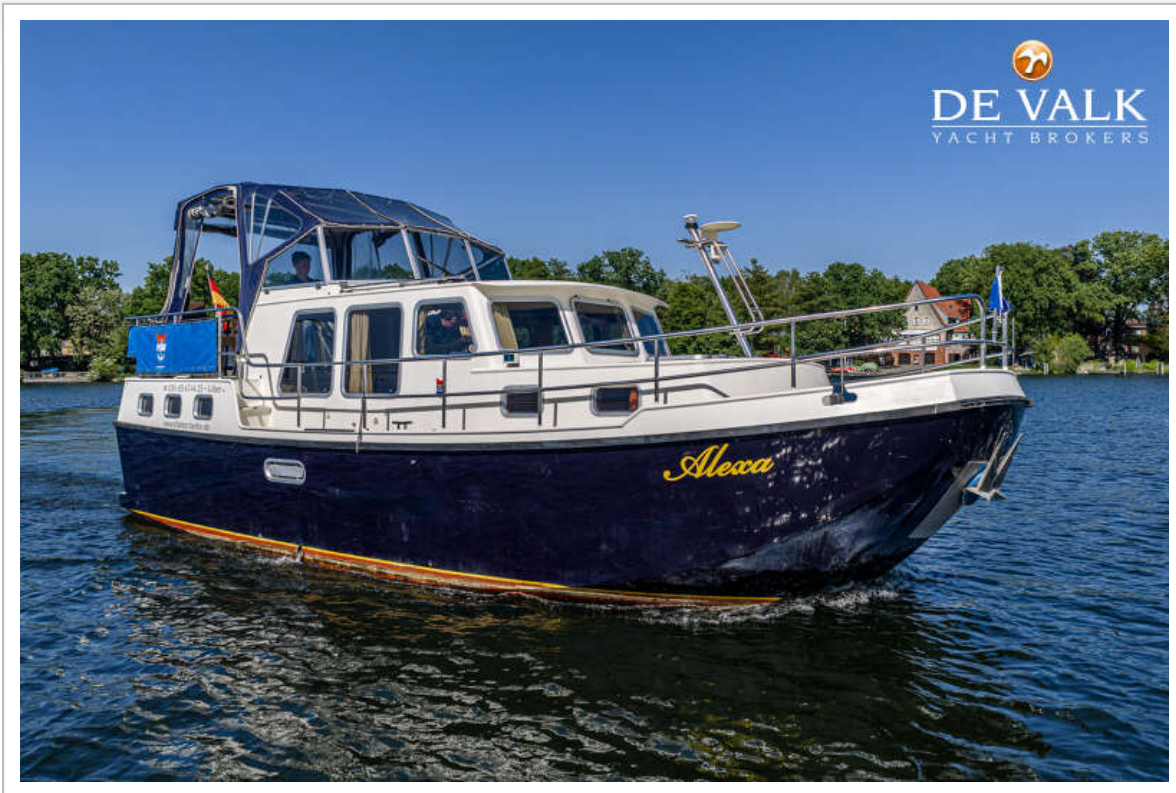
EQUIPMENT



Fixed windscreen	yes
Sprayhood	yes
Cockpit cover	yes
Cockpit table	yes
Cockpit chairs	yes
Boarding ladder	stainless steel
Deck shower	yes
Anchor	yes
Anchor chain	yes
Windlass	electrical
Sea railing	stainless steel
Grab rail (superstructure)	stainless steel
Railing side opening gates	Both sides
Wiper	1x
Horn	electric
Fenders	yes
Mooring lines	yes
TV	Telefunken
Radio-cd player	yes
Cockpit speakers	yes



PEDRO MARIN 30



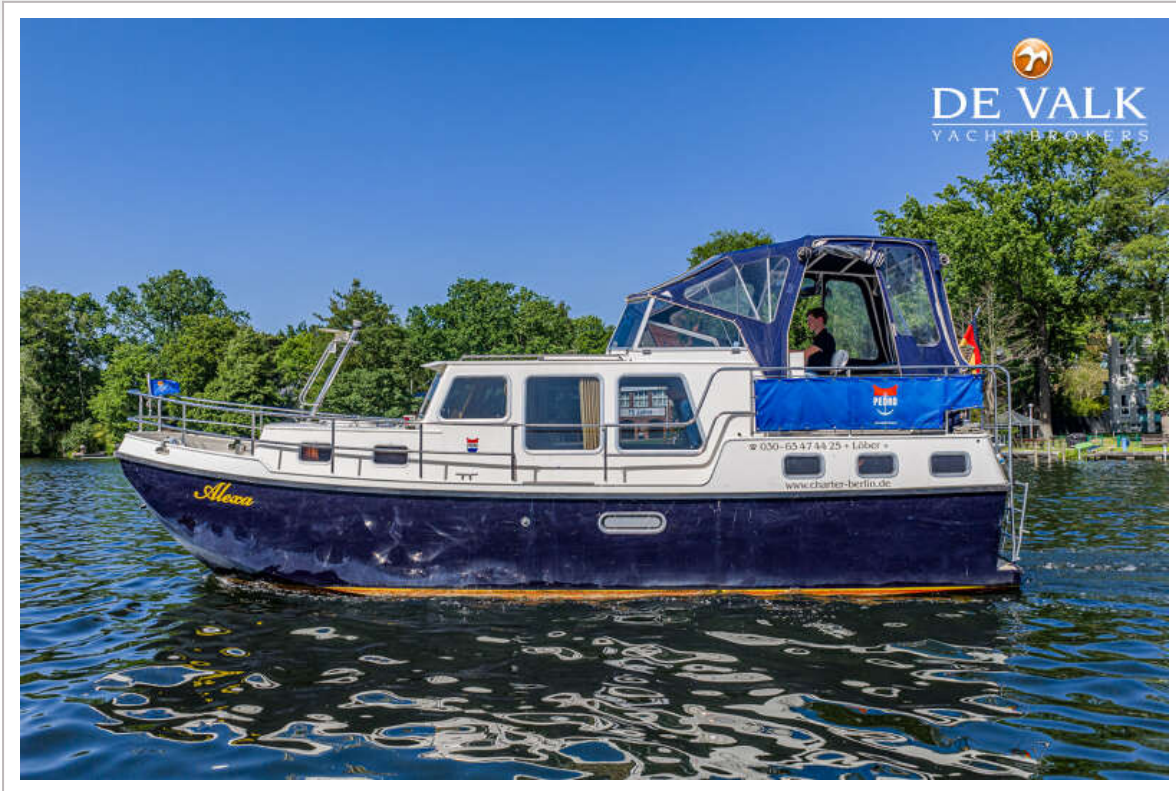
PEDRO MARIN 30



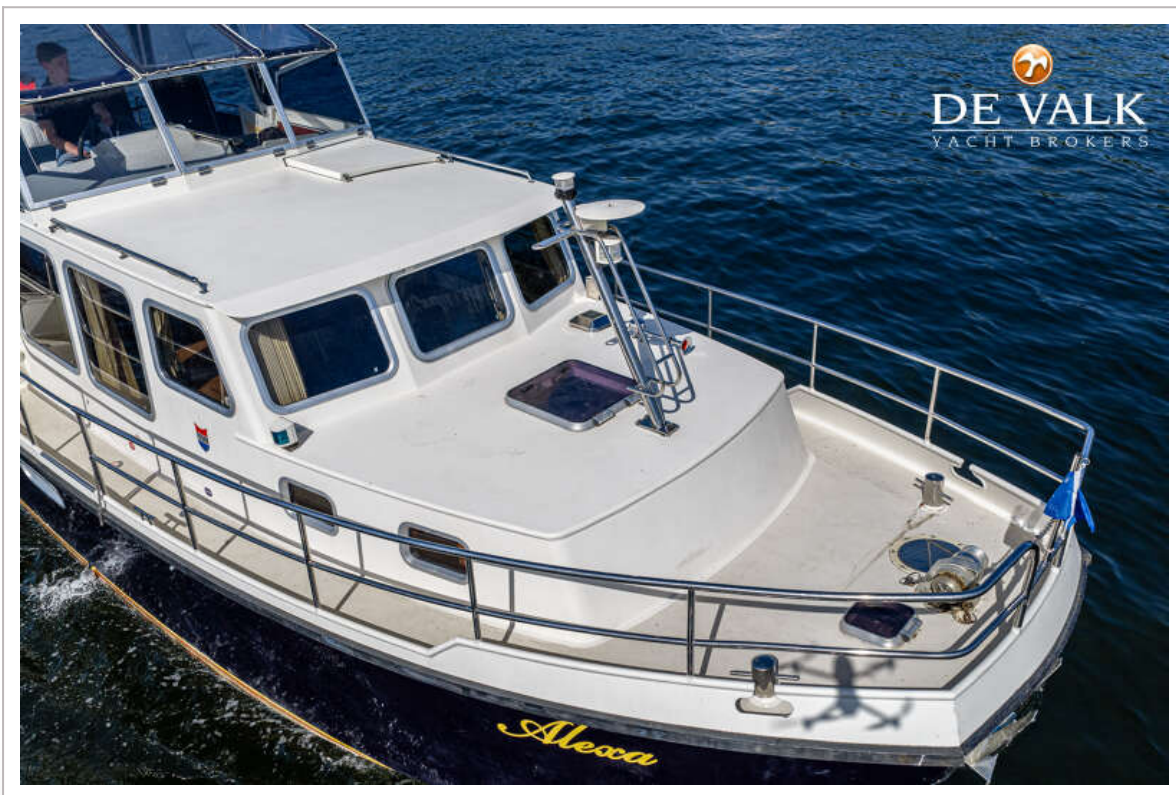
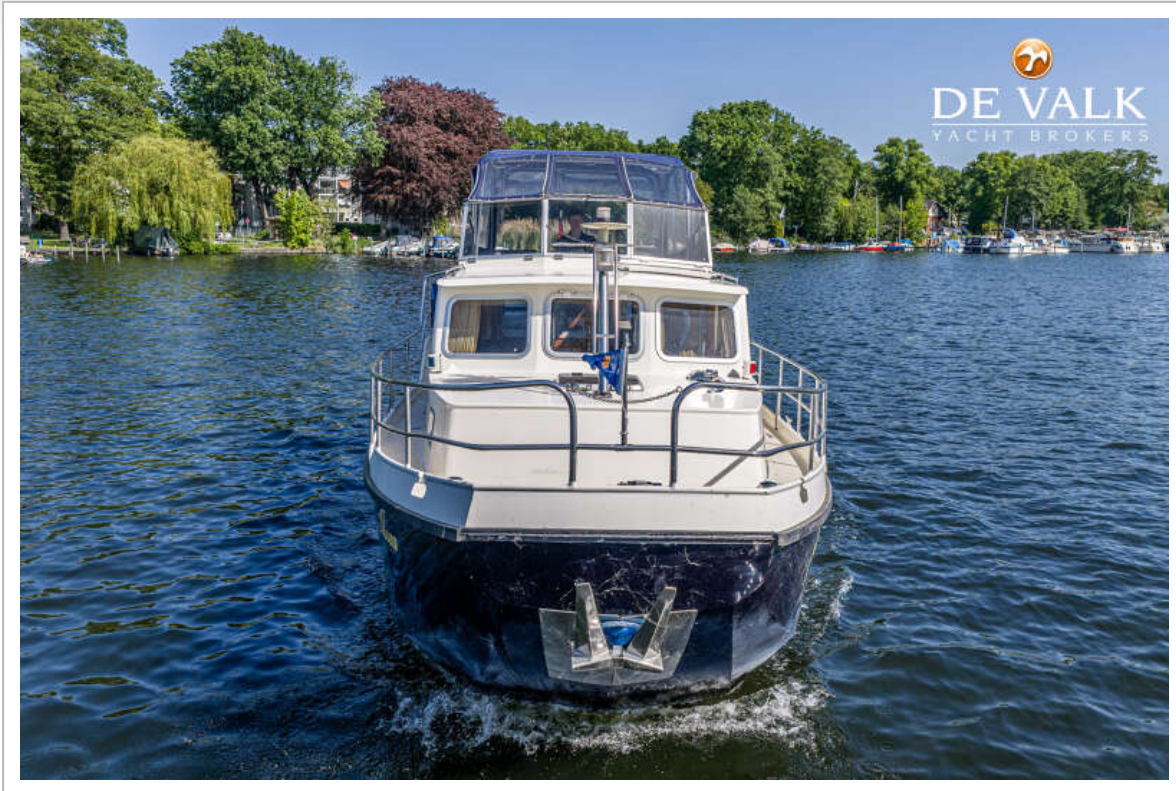
PEDRO MARIN 30



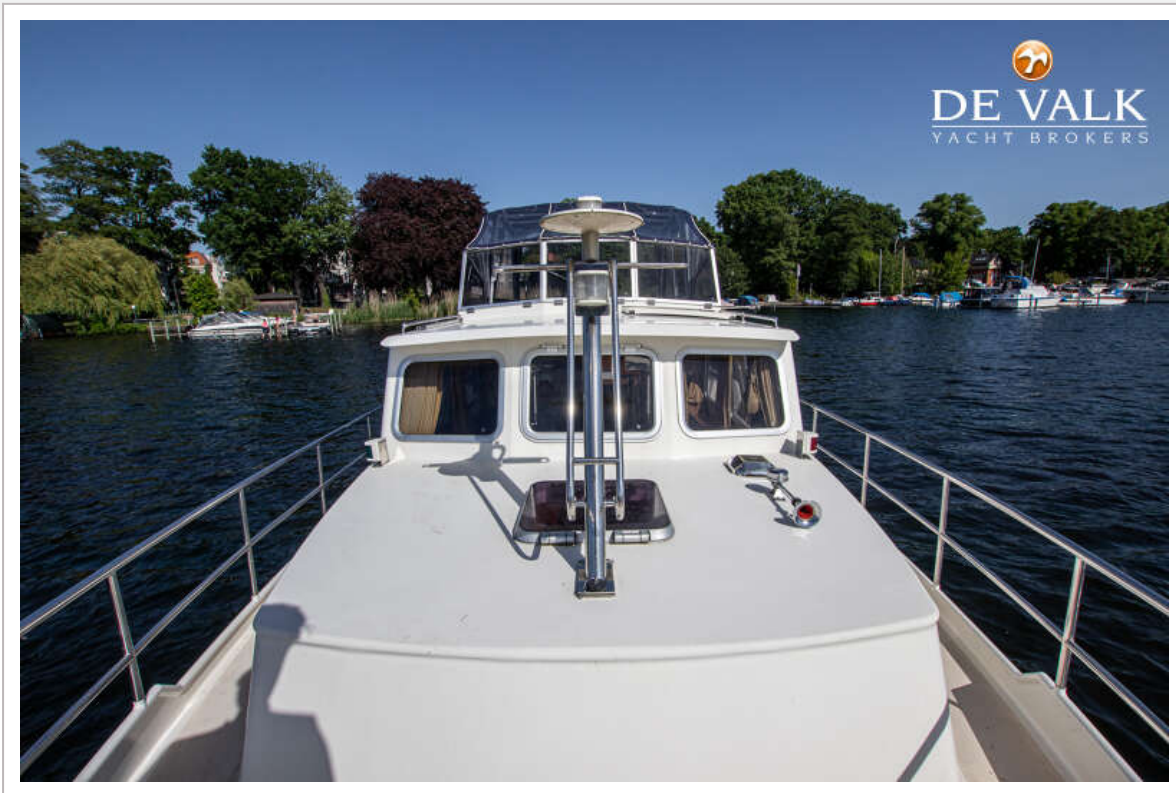
PEDRO MARIN 30



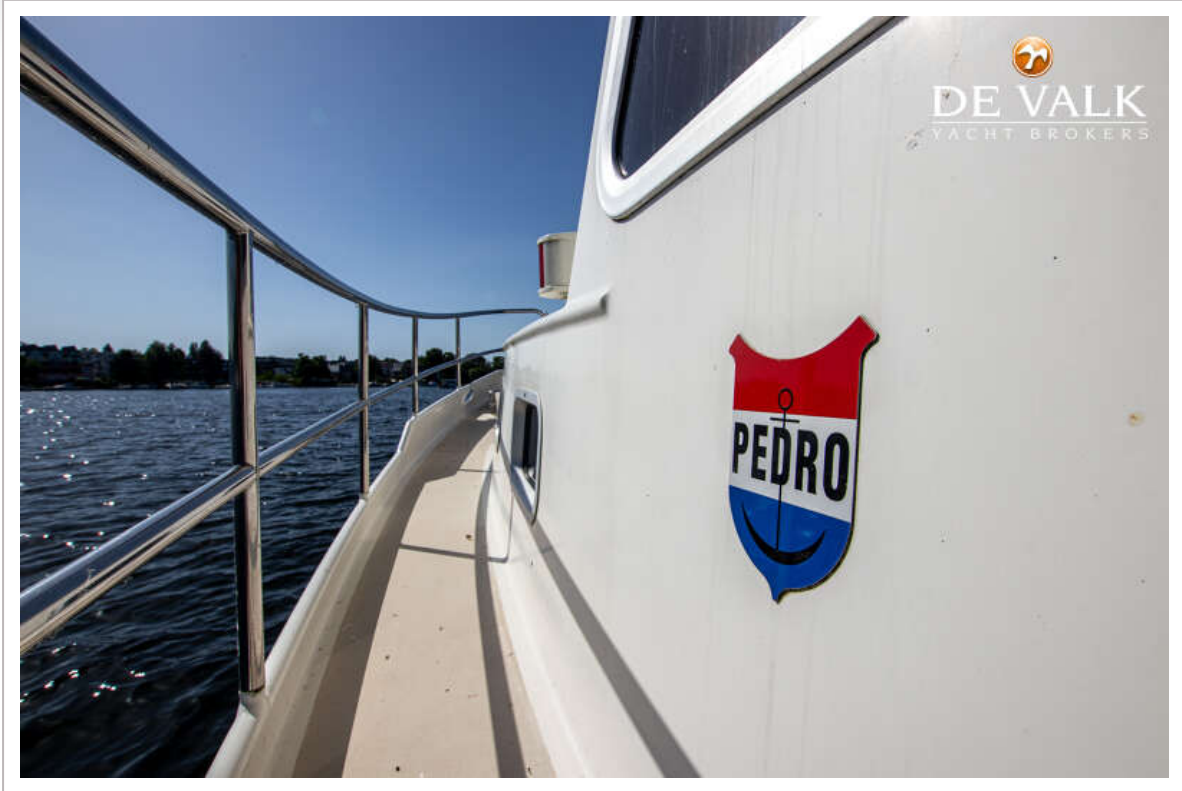
PEDRO MARIN 30



PEDRO MARIN 30



PEDRO MARIN 30



PEDRO MARIN 30



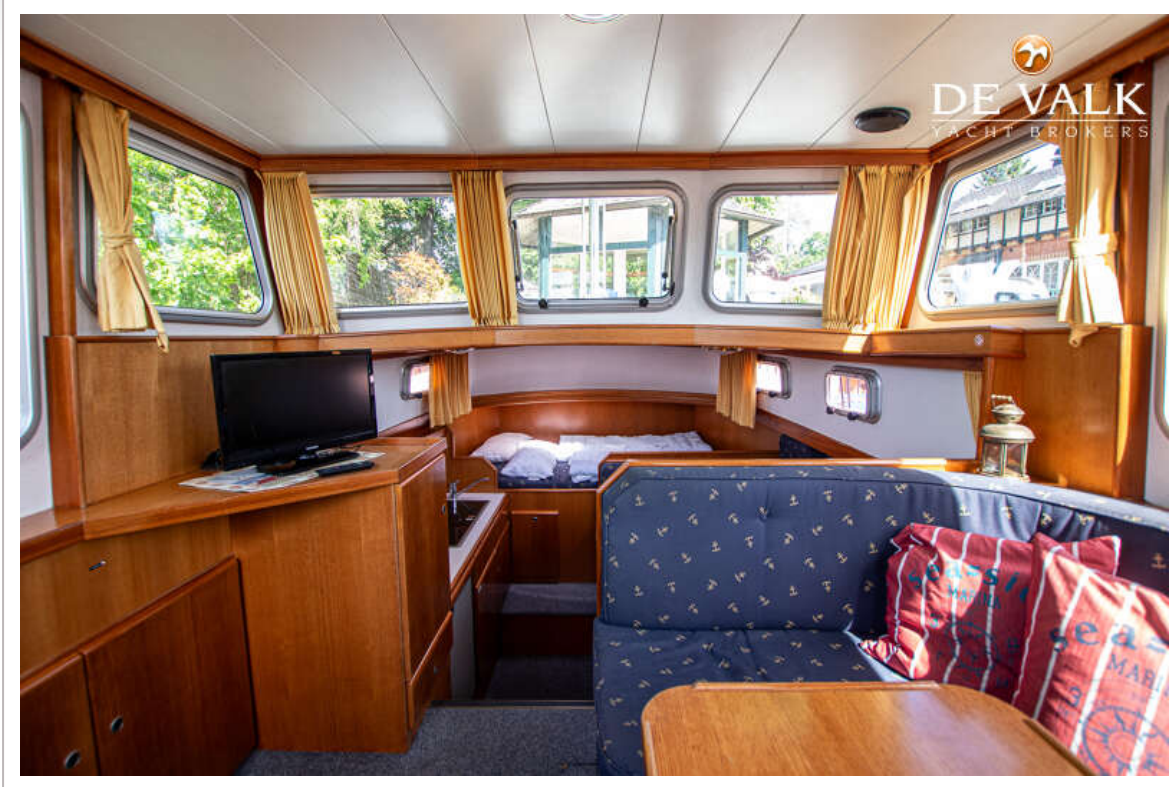
PEDRO MARIN 30



PEDRO MARIN 30



PEDRO MARIN 30

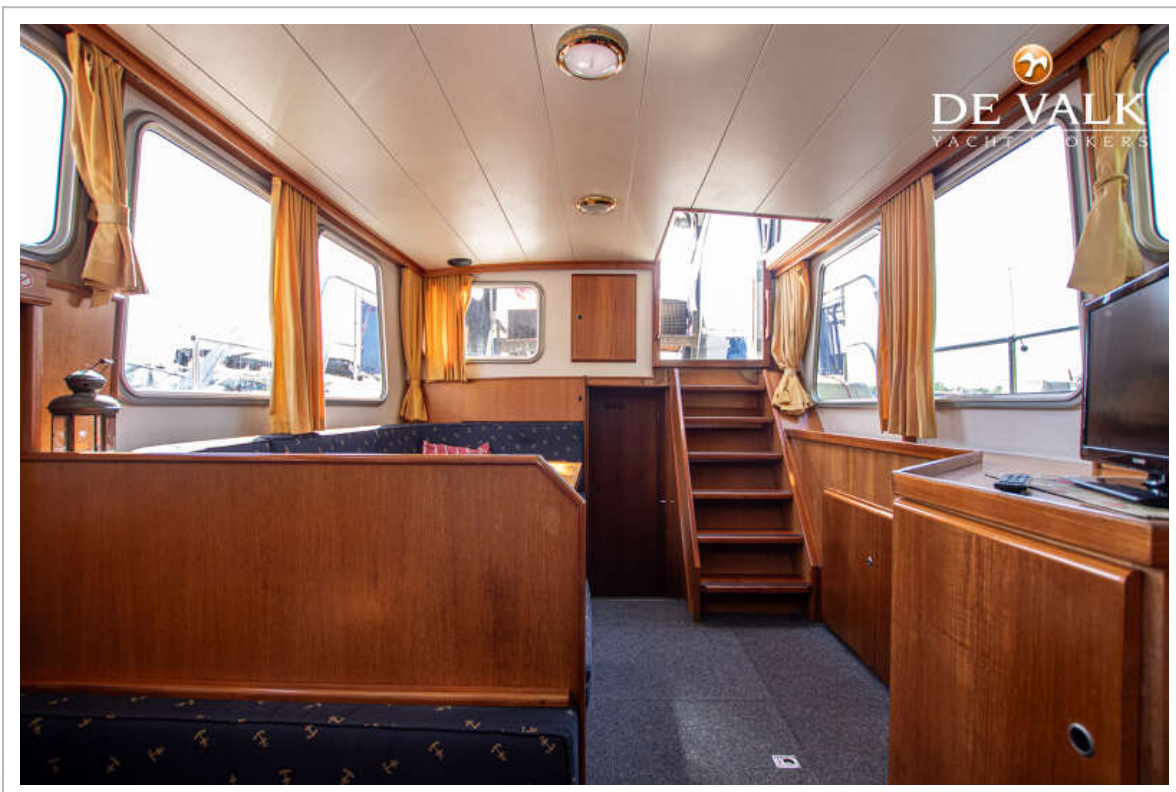
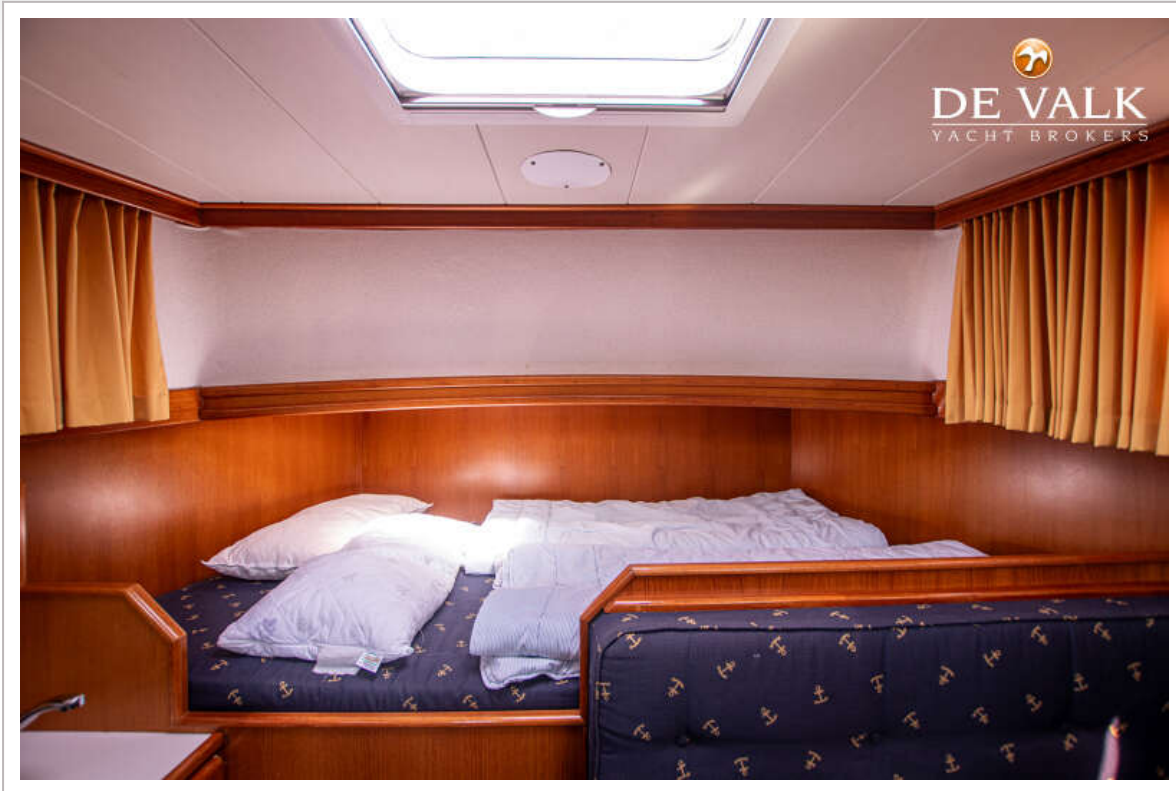


PEDRO MARIN 30



PEDRO MARIN 30





PEDRO MARIN 30



