



GRUNO 36 CLASSIC

# GRUNO 36 CLASSIC

## BROKER'S COMMENTS

The Gruno 36 Classic (2014) is a 11.00 m motor yacht featuring a steel hull and a beige finish. Powered by a 95 hp Sole diesel engine. The layout includes two cabins accommodating up to five guests, a saloon, a galley and two bathroom facilities with separate shower and toilet compartments. Equipped with bow and stern thrusters, Eberspächer heating, Raymarine navigation and an aft deck and cockpit area.

*Julian de Heer*

## SPECIFICATIONS

<b>Dimensions</b>	11.00 x 3.55 x 1.10 (m)	<b>Builder</b>	Jachtwerf Gruno
<b>Built</b>	2014	<b>Cabins</b>	2
<b>Material</b>	Steel	<b>Berths</b>	5
<b>Engine(s)</b>	1 x Sole SM-105 diesel	<b>Hp/Kw</b>	95.00 (hp), 69.92 (kw)
<b>Asking price</b>	€ 175.000 (VAT Not paid)	<b>Lying</b>	elsewhere / Not at sales office

## CONTACT

<b>Sales office</b>	De Valk Loosdrecht B.V.	<b>Telephone</b>	+31 (0)35 582 90 30
<b>Address</b>	't Breukeleveense Meentje 6 1231LM Loosdrecht / Wijdmeren NL	<b>E-mail</b>	loosdrecht@devalk.nl

## DISCLAIMER

These particulars are given in good faith as supplied but cannot be guaranteed.



# GRUNO 36 CLASSIC

## GENERAL

<b>Model</b>	GRUNO 36 CLASSIC
<b>Type</b>	motor yacht
<b>LOA (m)</b>	11,00
<b>Beam (m)</b>	3,55
<b>Draft (m)</b>	1,10
<b>Year built</b>	2014
<b>Builder</b>	Jachtwerf Gruno
<b>Displacement (t)</b>	12
<b>CE norm</b>	C
<b>Hull material</b>	steel
<b>Hull colour</b>	beige
<b>Hull shape</b>	multi hard chine
<b>Superstructure material</b>	steel
<b>Rubbing strake</b>	fender rope
<b>Deck material</b>	steel
<b>Deck finish</b>	non-skid moulded in
<b>Superstructure deck finish</b>	non-skid moulded in
<b>Cockpit deck finish</b>	non-skid moulded in
<b>Window frame</b>	aluminium
<b>Window material</b>	glass
<b>Deckhatch</b>	1X
<b>Portholes</b>	aluminium 12x
<b>Mast can be lowered</b>	manual
<b>Fuel tank (litre)</b>	stainless steel
<b>Level indicator (fuel tank)</b>	Vetus
<b>Freshwater tank (litre)</b>	yes
<b>Blackwater tank (litre)</b>	yes
<b>Blackwater tank extraction</b>	deck extraction + pump
<b>Wheel steering</b>	hydraulic
<b>Outside helm position</b>	yes



# GRUNO 36 CLASSIC

## ACCOMMODATION

<b>Cabins</b>	2
<b>Berths</b>	5
<b>Interior</b>	teak
<b>Floor</b>	teak And carpet
<b>Aft deck</b>	yes
<b>Saloon</b>	yes
<b>Heating</b>	diesel ducted hot air Eberspächer
<b>Dinette</b>	yes
<b>Opening door to aft deck</b>	yes
<b>Countertop</b>	plastic
<b>Sink</b>	stainless steel
<b>Cooker</b>	calor gas 4 burner
<b>Microwave/oven combi</b>	Tarrington House
<b>Fridge</b>	Isotherm
<b>Freezer</b>	Inside fridge
<b>Hot water system</b>	220V + engine Boiler
<b>Water pressure system</b>	electrical
<b>Owners cabin</b>	double bed
<b>Wardrobe</b>	hanging and shelves
<b>Bathroom</b>	separate
<b>Toilet</b>	separate
<b>Toilet system</b>	electric
<b>Wash basin</b>	in the bathroom
<b>Shower</b>	separate
<b>Guest cabin 1</b>	double bed
<b>Bathroom</b>	separate
<b>Toilet</b>	separate
<b>Toilet system</b>	electric
<b>Wash basin</b>	in the bathroom
<b>Shower</b>	separate



## MACHINERY

No of engines	1
Make	Sole
Type	SM-105
HP	95
kW	69.92
Fuel	diesel
Year installed	2013
Maximum speed (kn)	8,5
Engine hours	4406
Engine cooling system	freshwater heat exchanger
Drive	shaft
Engine controls	bowden cable
Gearbox	hydraulic
Bowthruster	electric Vetus
Sternthruster	electric Vetuse
Thrust bearing	yes
Propeller type	fixed
Propeller shaft material	stainless steel
Shaft lubrication	water
Electric bilge pump	yes
Bilge alarm	yes
Electrical installation	12V/220V
Batteries	yes
Bowthruster battery	yes
Sternthruster battery	yes
Battery charger/inverter	yes
Shorepower	with cable

## NAVIGATION

Depth sounder/log	Raymarine
-------------------	-----------



Rudder angle indicator	yes
Navigation lights	yes

## EQUIPMENT

Fixed windscreen	yes
Sprayhood	yes
Cockpit table	yes
Cockpit chairs	yes
Bathing platform	yes
Boarding ladder	stainless steel
Deck shower	yes
Anchor	yes
Anchor chain	yes
Windlass	manual Lofrans
Sea railing	stainless steel
Grab rail (superstructure)	stainless steel
Railing side opening gates	Both sides
Wiper	1x
Horn	electric
Fenders	yes
Mooring lines	yes
TV	yes
Radio	Pioneer
Cockpit speakers	yes
Speakers in salon	yes



# GRUNO 36 CLASSIC



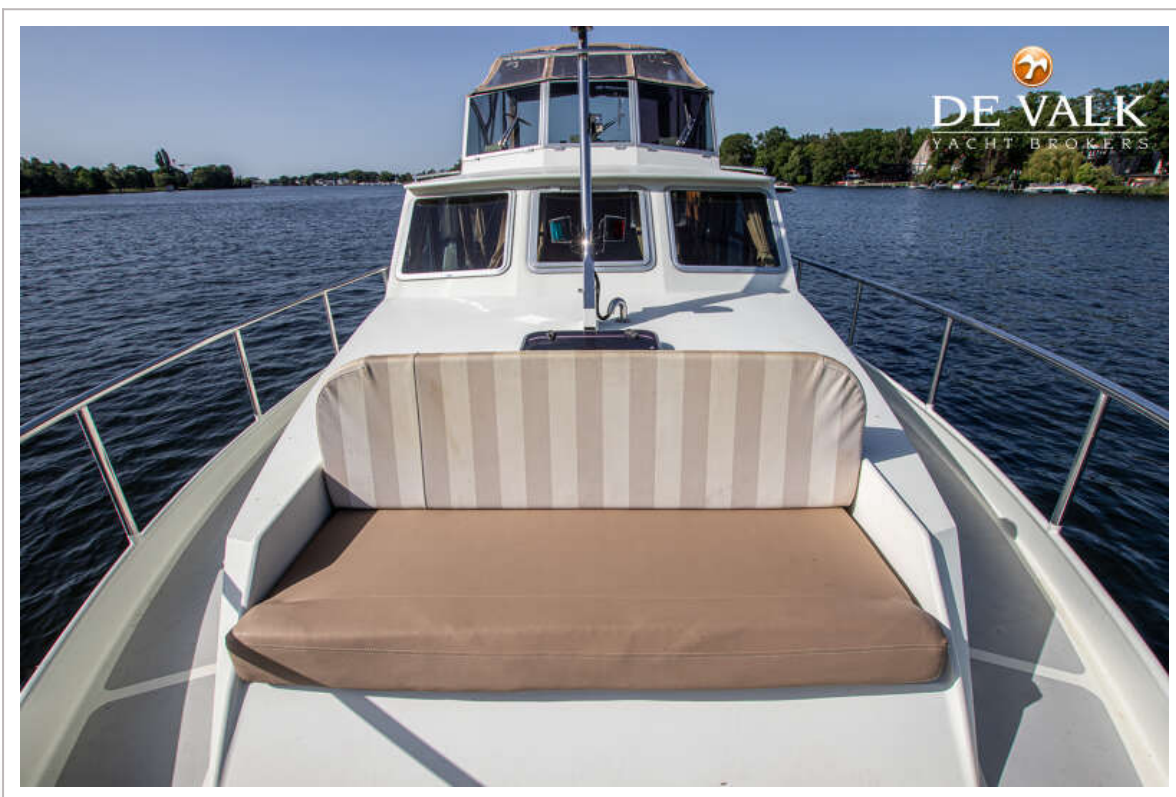
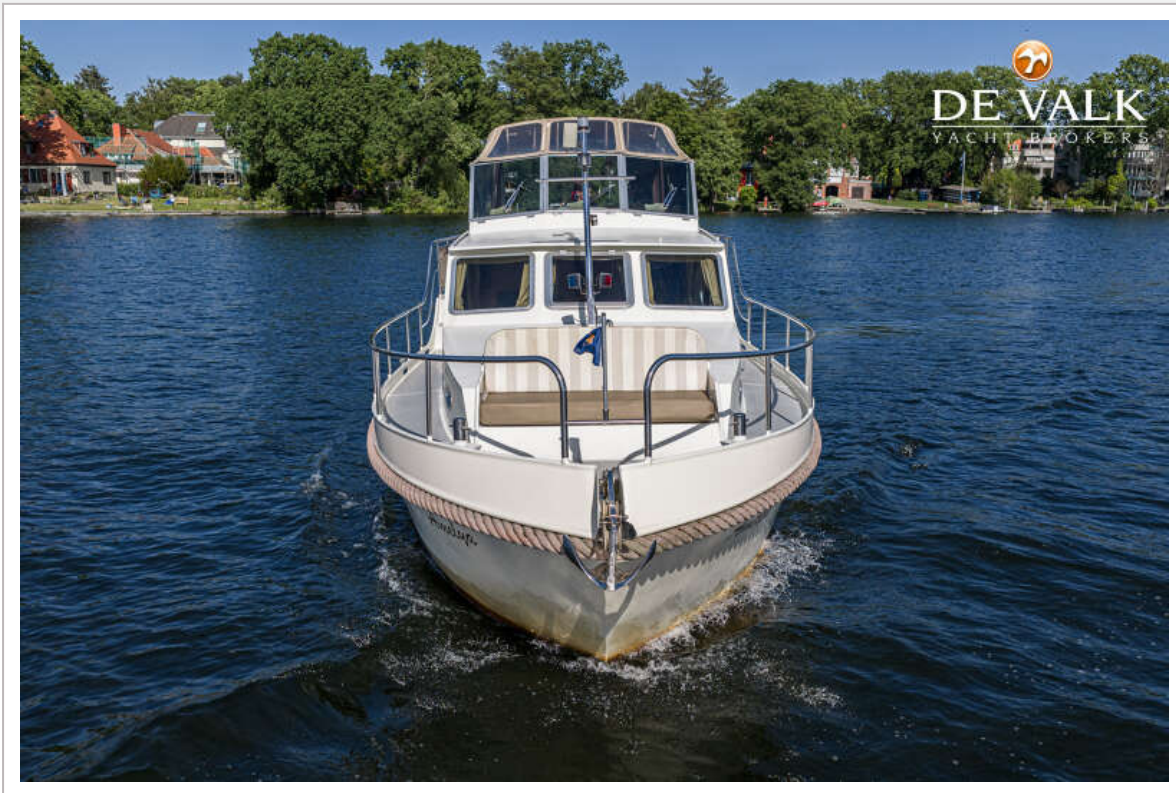
# GRUNO 36 CLASSIC



# GRUNO 36 CLASSIC



# GRUNO 36 CLASSIC



# GRUNO 36 CLASSIC



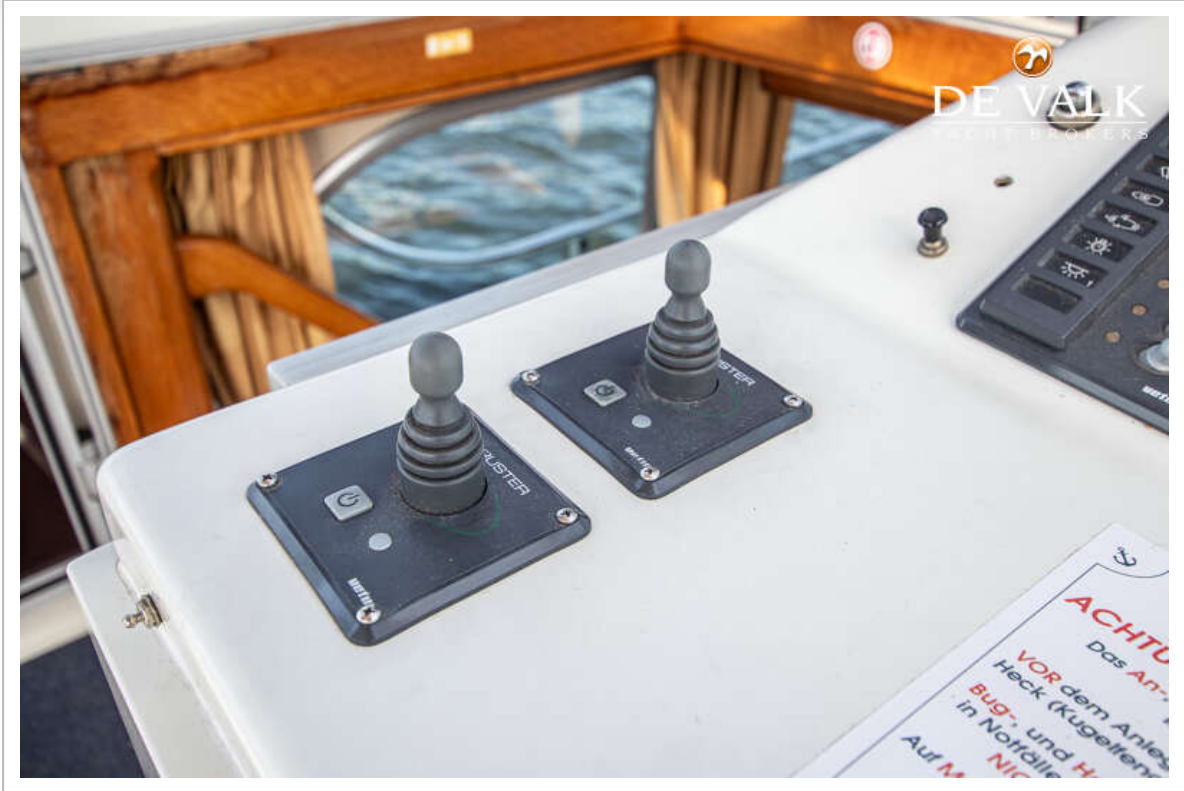
# GRUNO 36 CLASSIC



# GRUNO 36 CLASSIC



# GRUNO 36 CLASSIC



# GRUNO 36 CLASSIC



# GRUNO 36 CLASSIC



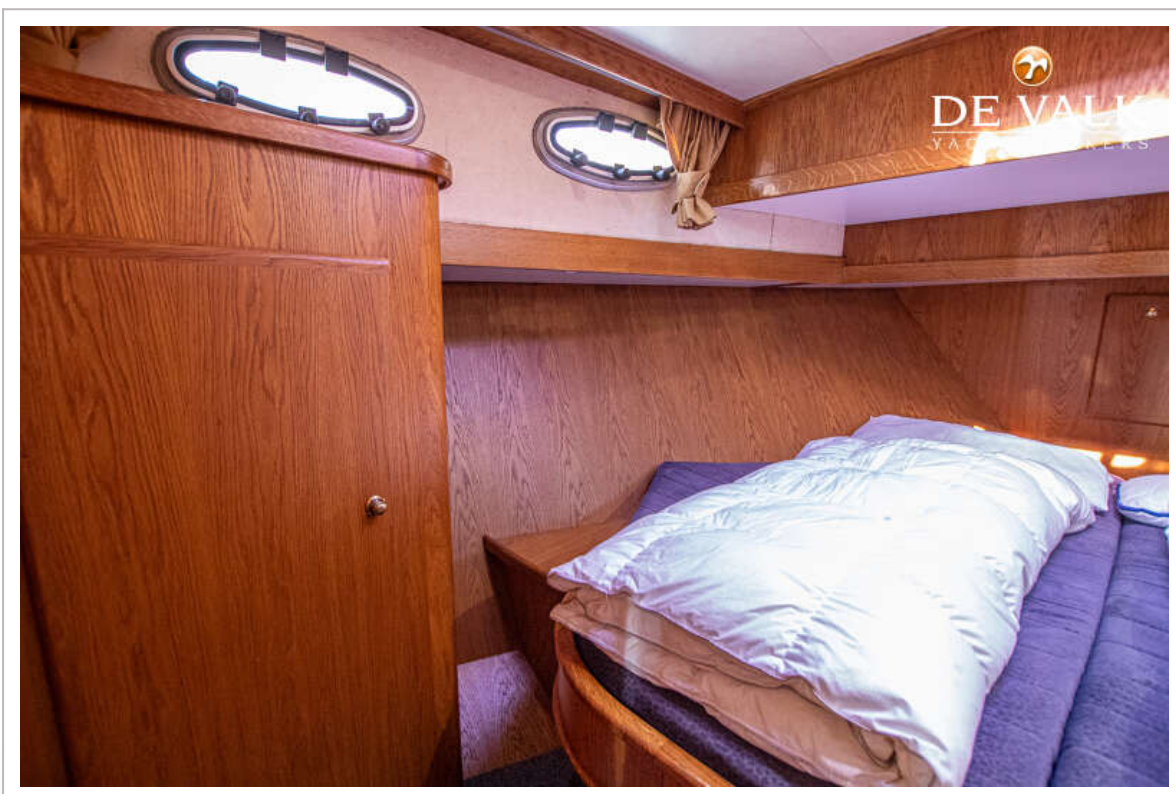
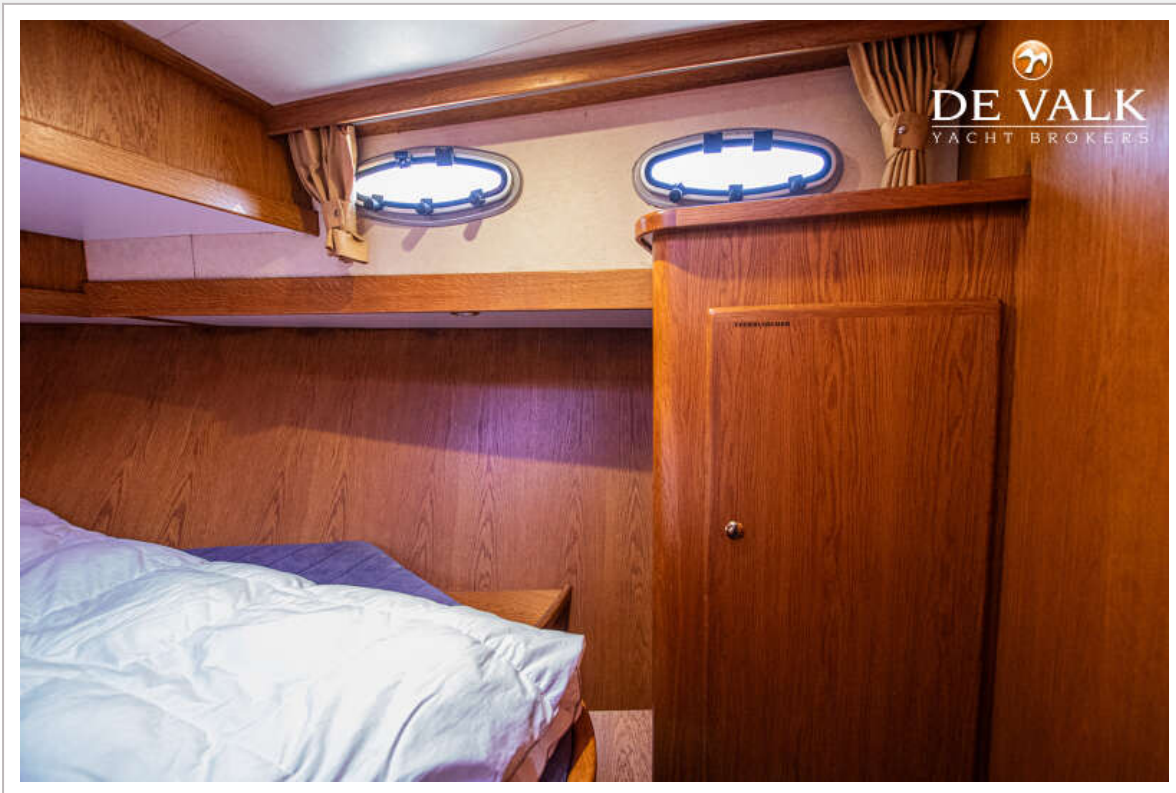
# GRUNO 36 CLASSIC



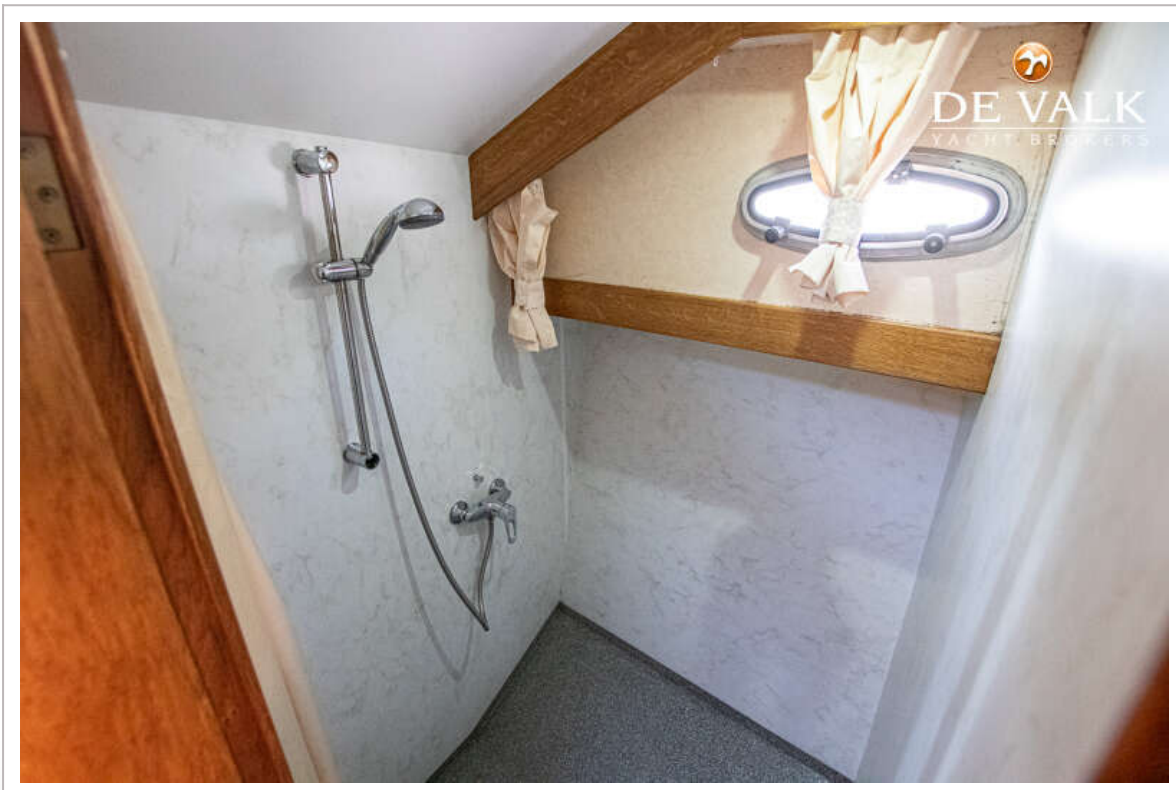
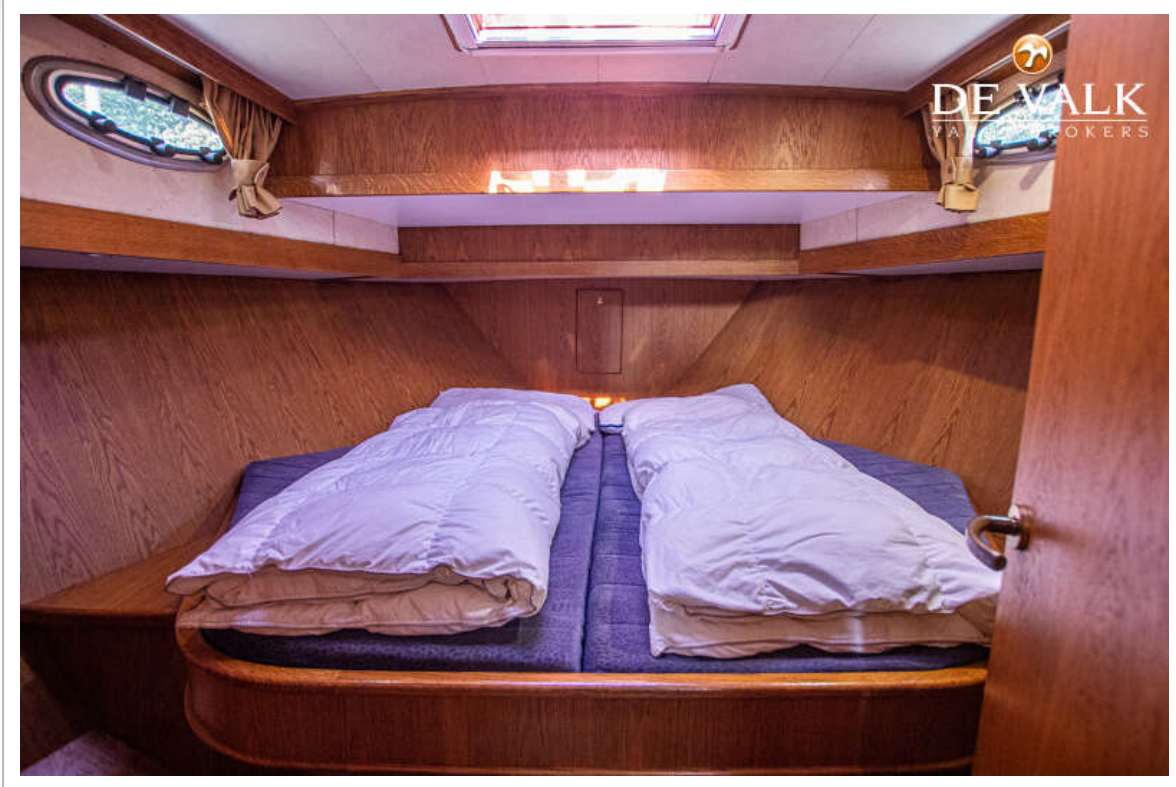
# GRUNO 36 CLASSIC



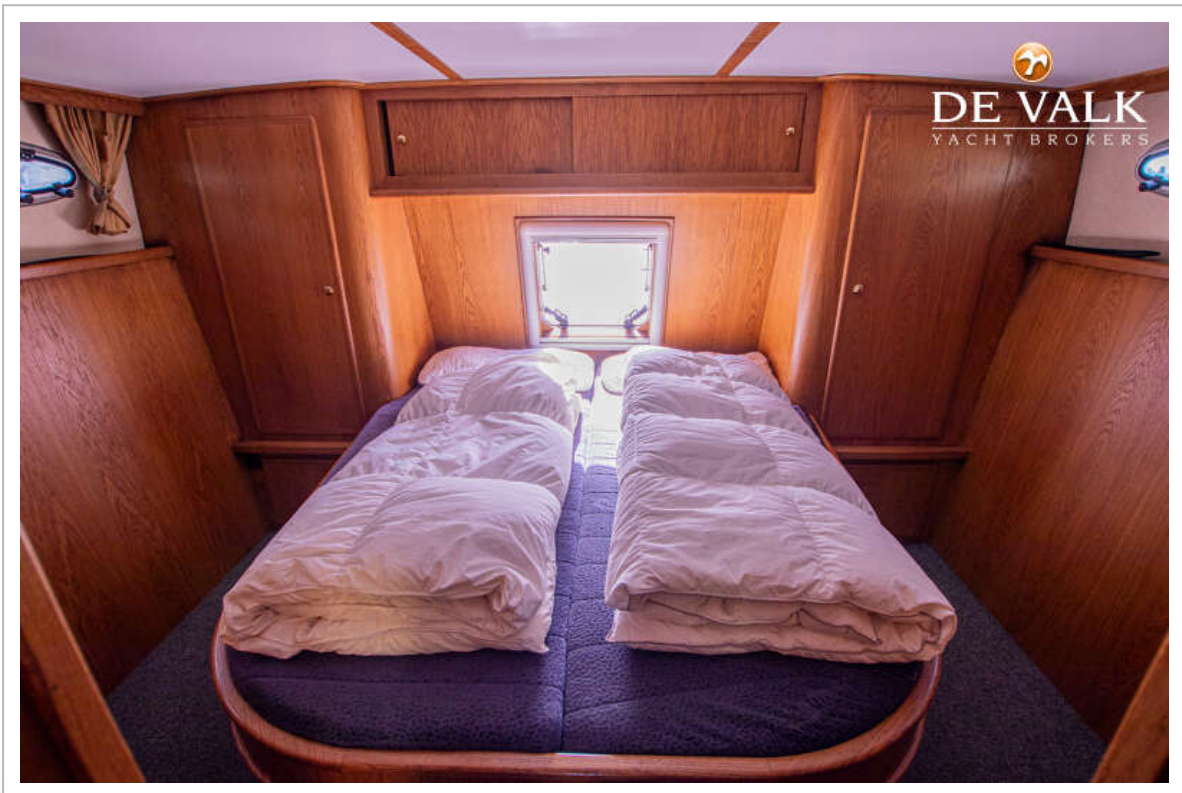
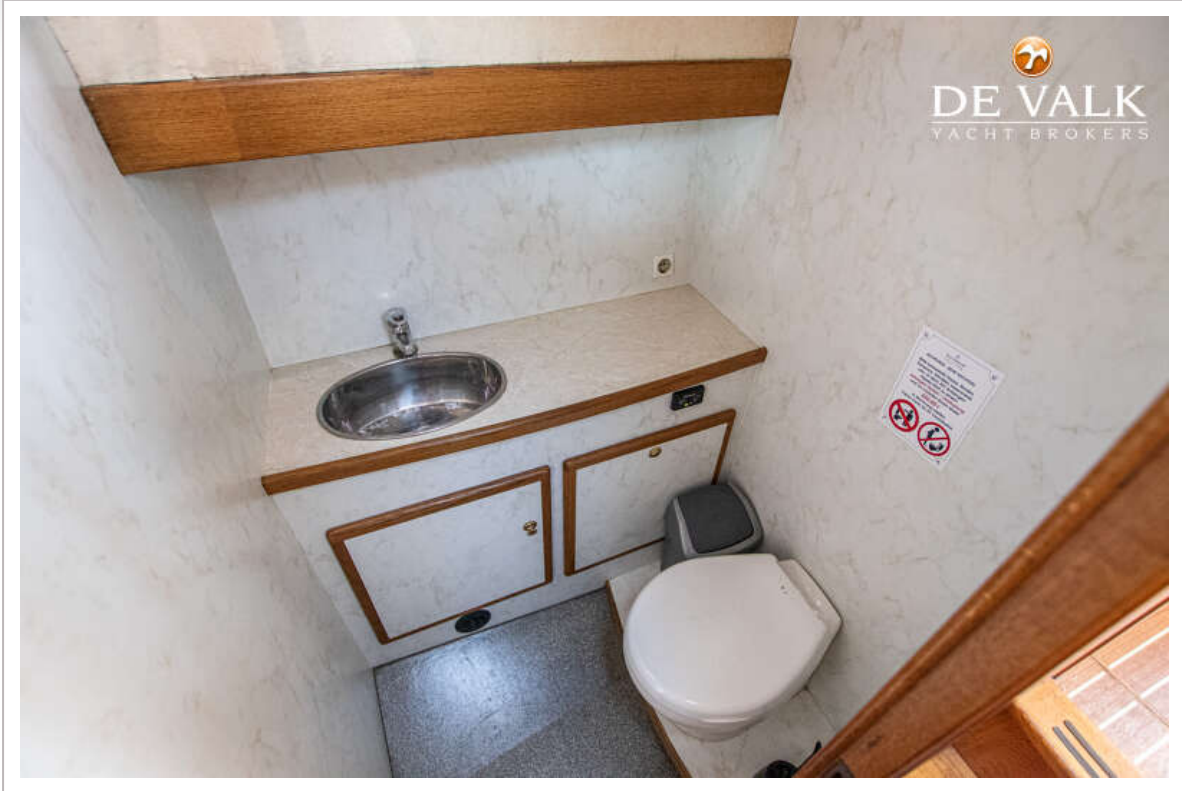
# GRUNO 36 CLASSIC



# GRUNO 36 CLASSIC



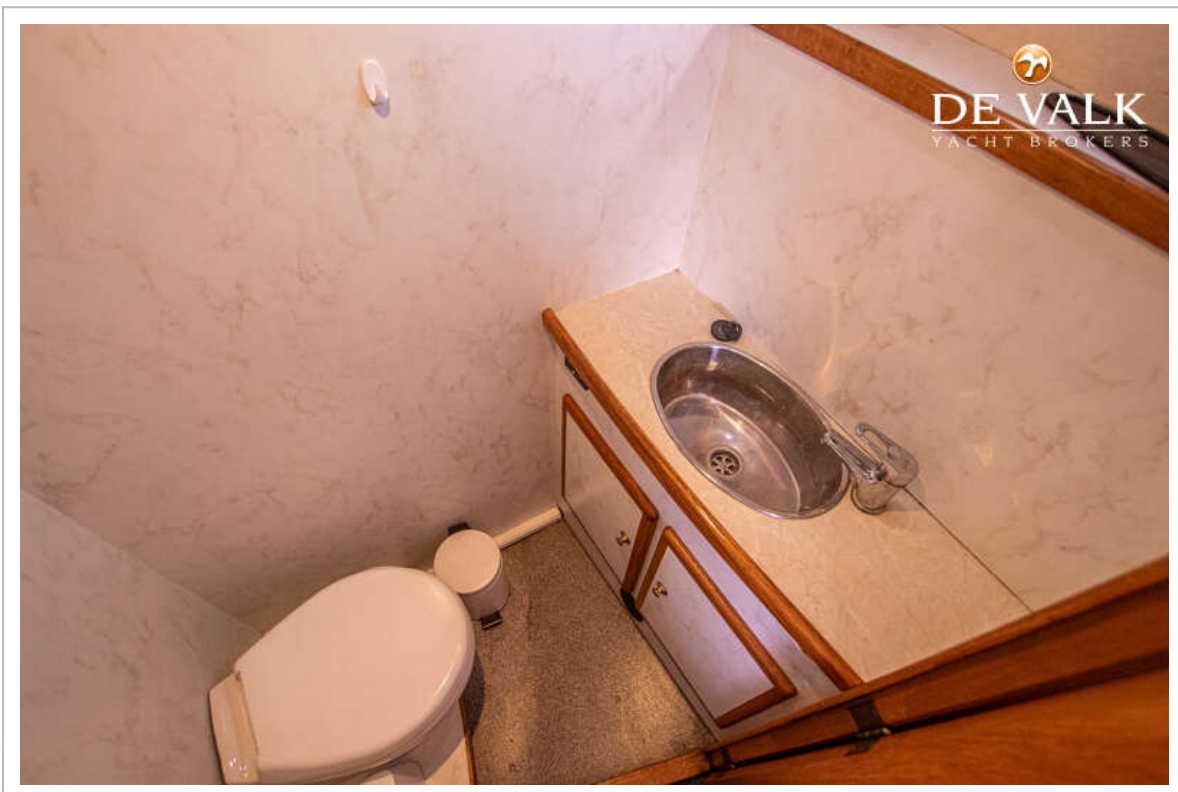
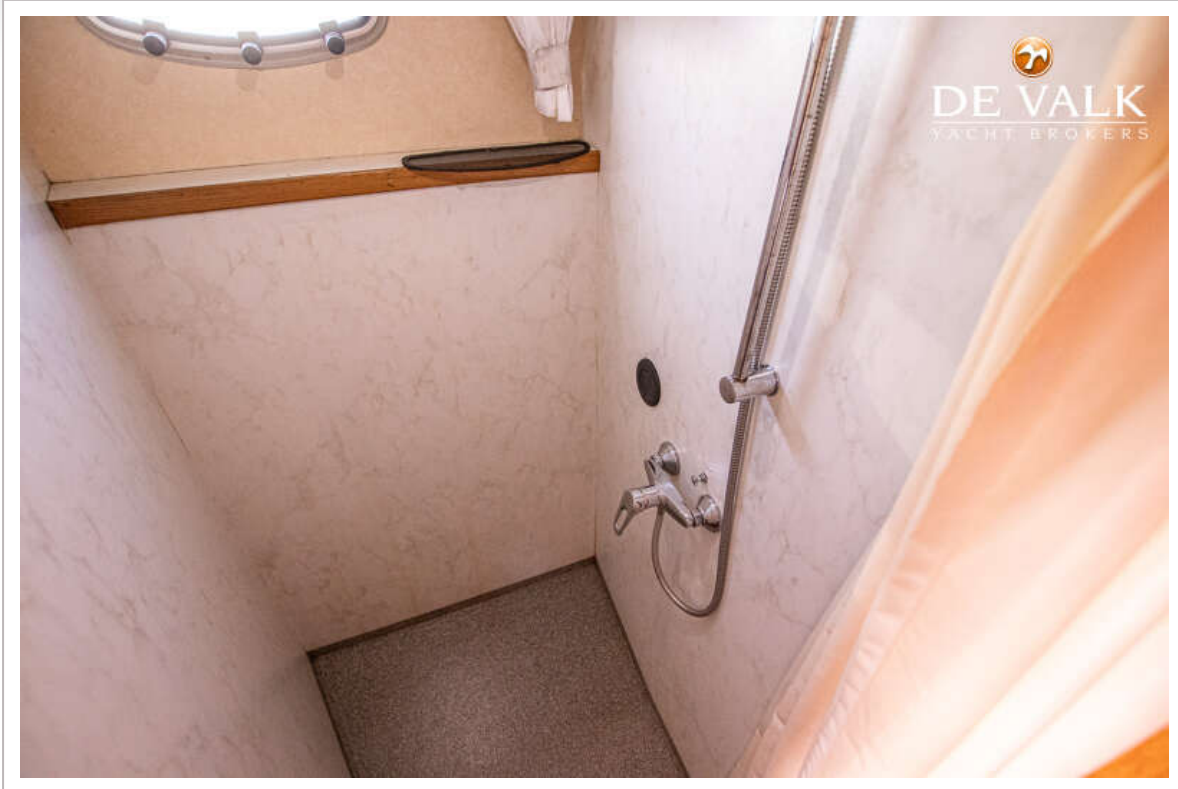
# GRUNO 36 CLASSIC



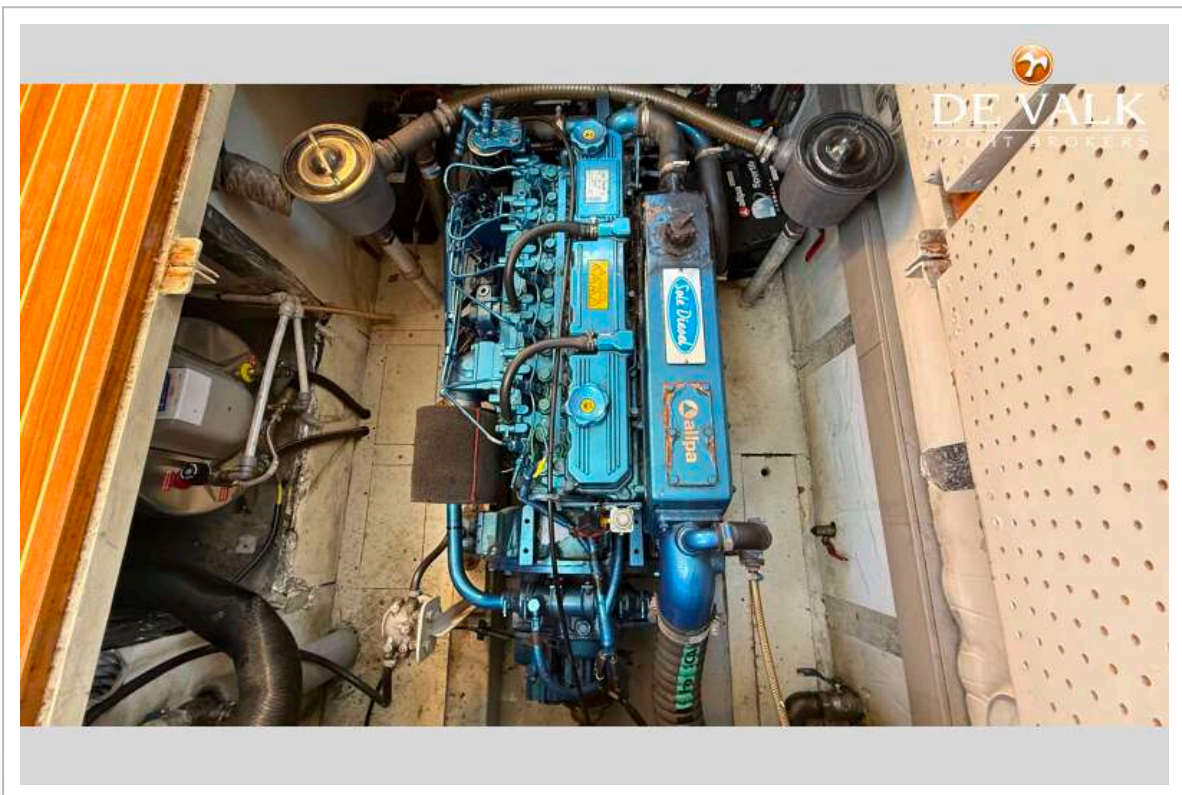
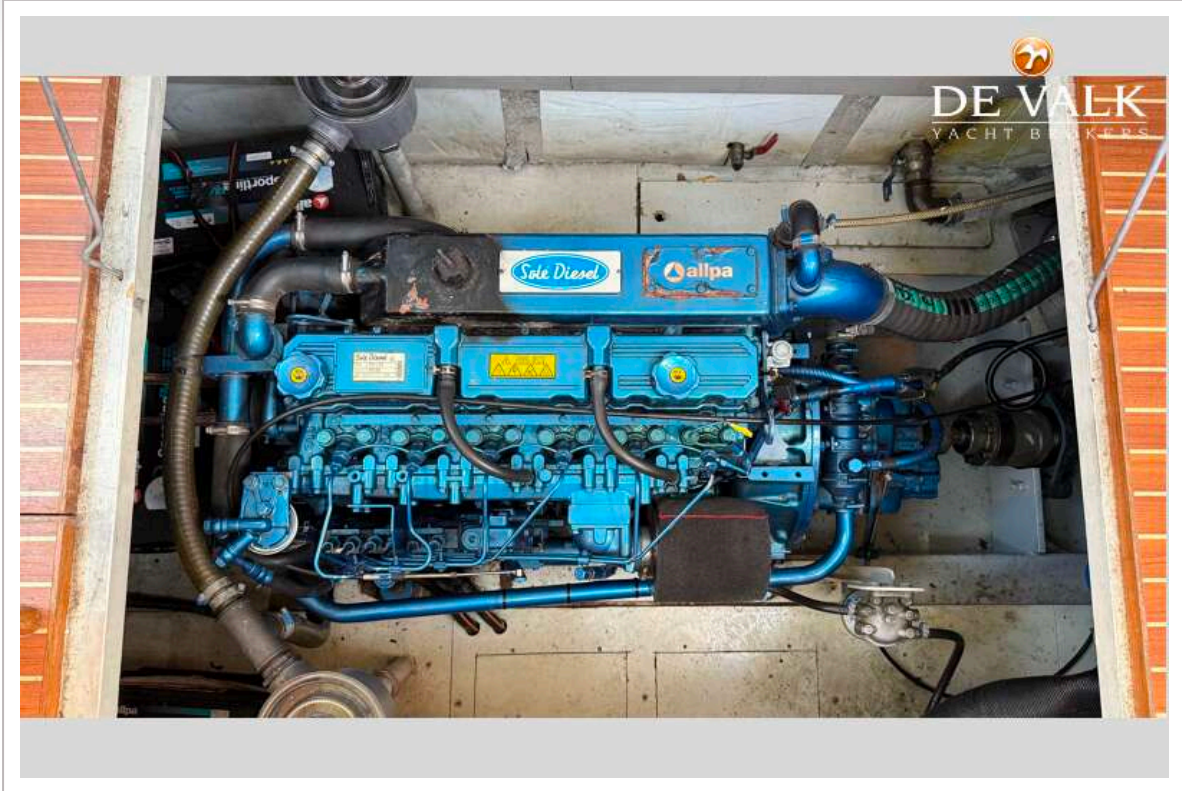
# GRUNO 36 CLASSIC



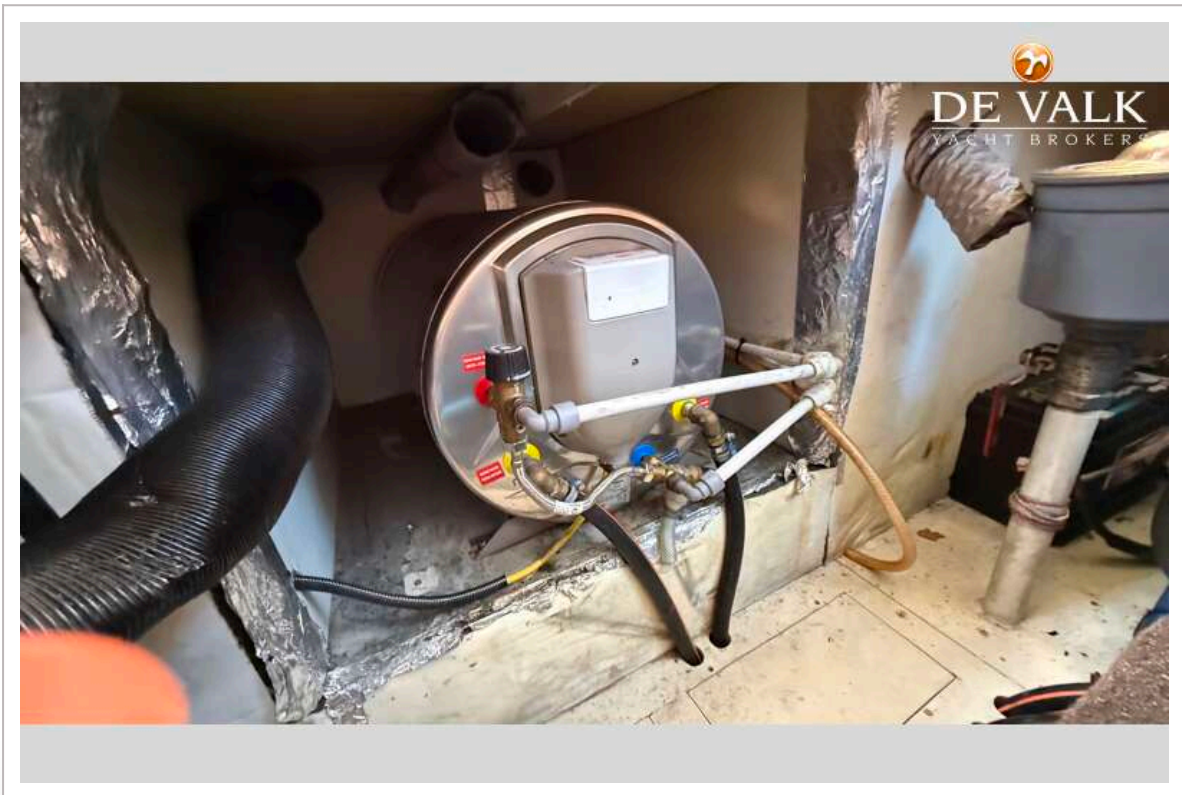
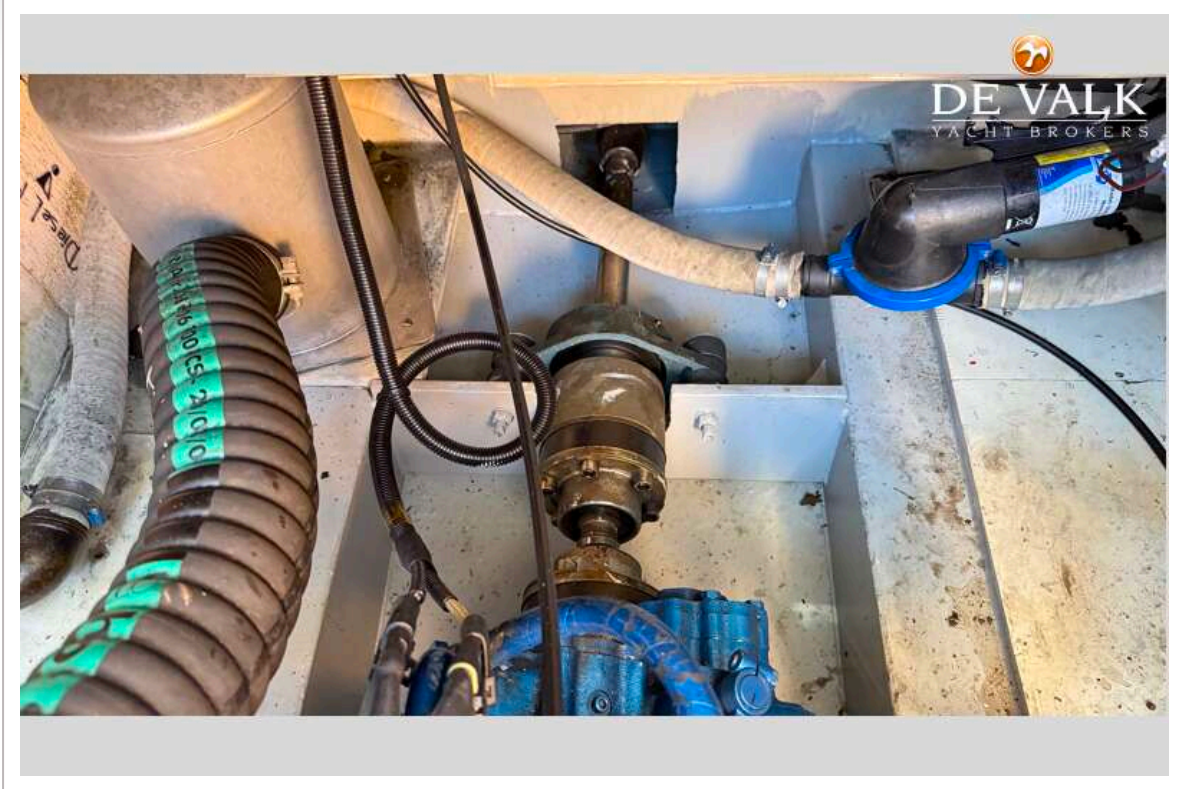
# GRUNO 36 CLASSIC



# GRUNO 36 CLASSIC



# GRUNO 36 CLASSIC



# GRUNO 36 CLASSIC

