



DE VALK
YACHT BROKERS



LINSKENS CATFISH 46



DE VALK
YACHT BROKERS

LINSKENS CATFISH 46

BROKER'S COMMENTS

The Linskens Catfish 46 (2012) is a 14.00 m motor yacht featuring a steel hull and a beige finish. Powered by a 114 hp Vetus Deutz diesel engine, she offers functional cruising for longer trips and life on board. The layout includes two cabins accommodating up to eight guests, a saloon, a fully equipped galley and multiple bathroom facilities with en-suite options. Equipped with bow and stern thrusters, Webasto heating, Raymarine navigation and a spacious aft deck and cockpit area.

Julian de Heer

SPECIFICATIONS

| | | | |
|---------------------|-----------------------------------|----------------|---------------------------------|
| Dimensions | 14.00 x 4.35 x 1.15 (m) | Builder | Gielissen Linskens Shipyard |
| Built | 2012 | Cabins | 2 |
| Material | Steel | Berths | 8 |
| Engine(s) | 1 x Vetus Deutz DT 44452 A diesel | Hp/Kw | 114.00 (hp), 83.90 (kw) |
| Asking price | € 228.000 (VAT Not paid) | Lying | elsewhere / Not at sales office |

CONTACT

| | | | |
|---------------------|--|------------------|----------------------|
| Sales office | De Valk Loosdrecht B.V. | Telephone | +31 (0)35 582 90 30 |
| Address | 't Breukeleveense Meentje 6 1231LM Loosdrecht / Wijdmeren NL | E-mail | loosdrecht@devalk.nl |

DISCLAIMER

These particulars are given in good faith as supplied but cannot be guaranteed.



GENERAL

| | |
|-------------------------------------|-----------------------------|
| Model | LINSKENS CATFISH 46 |
| Type | motor yacht |
| LOA (m) | 14,00 |
| Beam (m) | 4,35 |
| Draft (m) | 1,15 |
| Air draft min (m) | 3,80 |
| Year built | 2012 |
| Builder | Gielissen Linskens Shipyard |
| Country | The Netherlands |
| Displacement (t) | 17,3 |
| CE norm | C |
| Hull material | steel |
| Hull colour | beige |
| Hull shape | hard chine |
| Superstructure material | steel |
| Rubbing strake | rubber |
| Deck material | steel |
| Deck finish | non-skid paint |
| Superstructure deck finish | non-skid paint |
| Cockpit deck finish | non-skid paint |
| Window frame | aluminium |
| Window material | glass |
| Deckhatch | 1x |
| Portholes | aluminium 12x |
| Mast can be lowered | manual |
| Fuel tank (litre) | 800 |
| Level indicator (fuel tank) | Vetus |
| Level indicator (freshwater) | Vetus |
| Level indicator (blackwater) | Vetus |
| Blackwater tank extraction | deck extraction + pump |



| | |
|-----------------------|-----------|
| Wheel steering | hydraulic |
| Outside helm position | yes |

ACCOMMODATION

| | |
|-------------------------------|-------------------------------|
| Cabins | 2 |
| Berths | 8 |
| Interior | walnut |
| Floor | vinyl |
| Aft deck | yes |
| Saloon | yes |
| Heating | diesel ducted hot air Webasto |
| Dinette to convert into berth | yes |
| Opening door to aft deck | yes |
| Galley | yes |
| Countertop | Duropal |
| Sink | stainless steel |
| Cooker | calor gas 4 burner |
| Oven | Siemens |
| Extractor | yes |
| Hot water system | 220V + engine |
| Water pressure system | electrical |
| Owners cabin | double bed |
| Wardrobe | hanging and shelves |
| Bathroom | separate |
| Toilet | separate |
| Toilet system | electric Planus |
| Wash basin | in the bathroom |
| Shower | separate |
| Guest cabin 1 | twin single |
| Wardrobe | hanging and shelves |
| Bathroom | en suite |



| | |
|---------------|---------------------|
| Toilet | en suite |
| Toilet system | electric Planus |
| Wash basin | in the bathroom |
| Shower | en suite |
| Guest cabin 2 | twin single |
| Wardrobe | hanging and shelves |
| Bathroom | en suite |
| Toilet | en suite Planus |
| Toilet system | electric |
| Wash basin | in the bathroom |
| Shower | en suite |

MACHINERY

| | |
|--------------------------|---------------------------|
| No of engines | 1 |
| Make | Vetus Deutz |
| Type | DT 44452 A |
| HP | 114 |
| kW | 83.90 |
| Fuel | diesel |
| Year installed | 2012 |
| Engine hours | 1897 |
| Engine cooling system | freshwater heat exchanger |
| Drive | shaft |
| Engine controls | bowden cable |
| Gearbox | hydraulic |
| Bowthruster | electric Vetus |
| Sternthruster | electric Vetus |
| Exhaust | watercooled |
| Thrust bearing | yes |
| Propeller type | fixed |
| Propeller shaft material | stainless steel |



| | |
|--------------------------|------------------------------------|
| Shaft lubrication | water |
| Manual bilge pump | yes |
| Electric bilge pump | yes |
| Bilge alarm | yes |
| Batteries | 8x total |
| Start battery | yes |
| Service battery | yes |
| Bowthruster battery | yes |
| Sternthruster battery | yes |
| Battery charger/inverter | Vicron Multiplus Compact 24V-1200W |
| Shorepower | with cable |

NAVIGATION

| | |
|-------------------|-----------|
| Depth sounder/log | Raymarine |
| Navigation lights | yes |

EQUIPMENT

| | |
|----------------------------|-------------------|
| Fixed windscreen | yes |
| Sprayhood | yes |
| Cockpit cover | yes |
| Cockpit cushions | yes |
| Cockpit table | yes |
| Bathing platform | yes |
| Boarding ladder | stainless steel |
| Anchor | yes |
| Anchor chain | yes |
| Windlass | electrical Lewmar |
| Sea railing | stainless steel |
| Grab rail (superstructure) | stainless steel |
| Railing side opening gates | Both sides |
| Wiper | 1x Roca |



| | |
|--------------------------|------------|
| Horn | electric |
| Fenders | yes |
| Mooring lines | yes |
| TV | Telefunken |
| Radio-cd player | yes |
| Cockpit speakers | yes |
| Speakers in salon | yes |



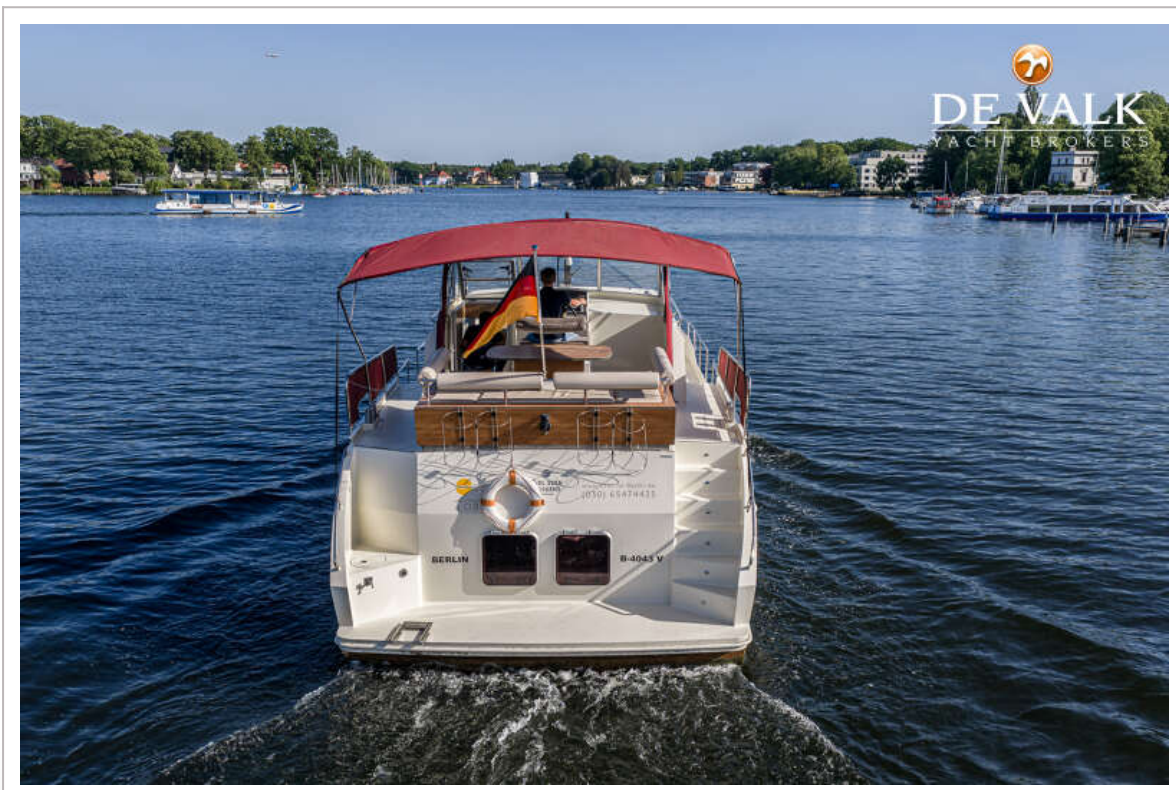
LINSKENS CATFISH 46



LINSKENS CATFISH 46




DE VALK
YACHT BROKERS




DE VALK
YACHT BROKERS



LINSKENS CATFISH 46



LINSKENS CATFISH 46



LINSKENS CATFISH 46



LINSKENS CATFISH 46



LINSKENS CATFISH 46



LINSKENS CATFISH 46



LINSKENS CATFISH 46



LINSKENS CATFISH 46



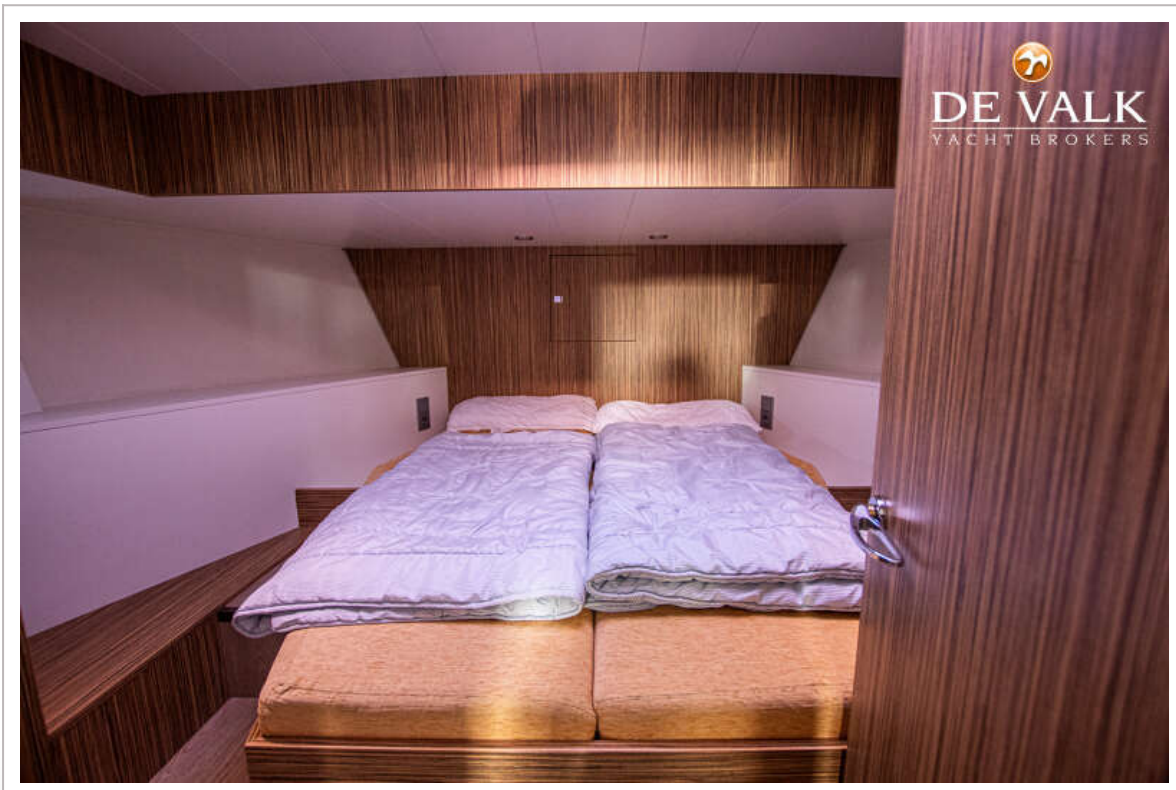
LINSKENS CATFISH 46



LINSKENS CATFISH 46



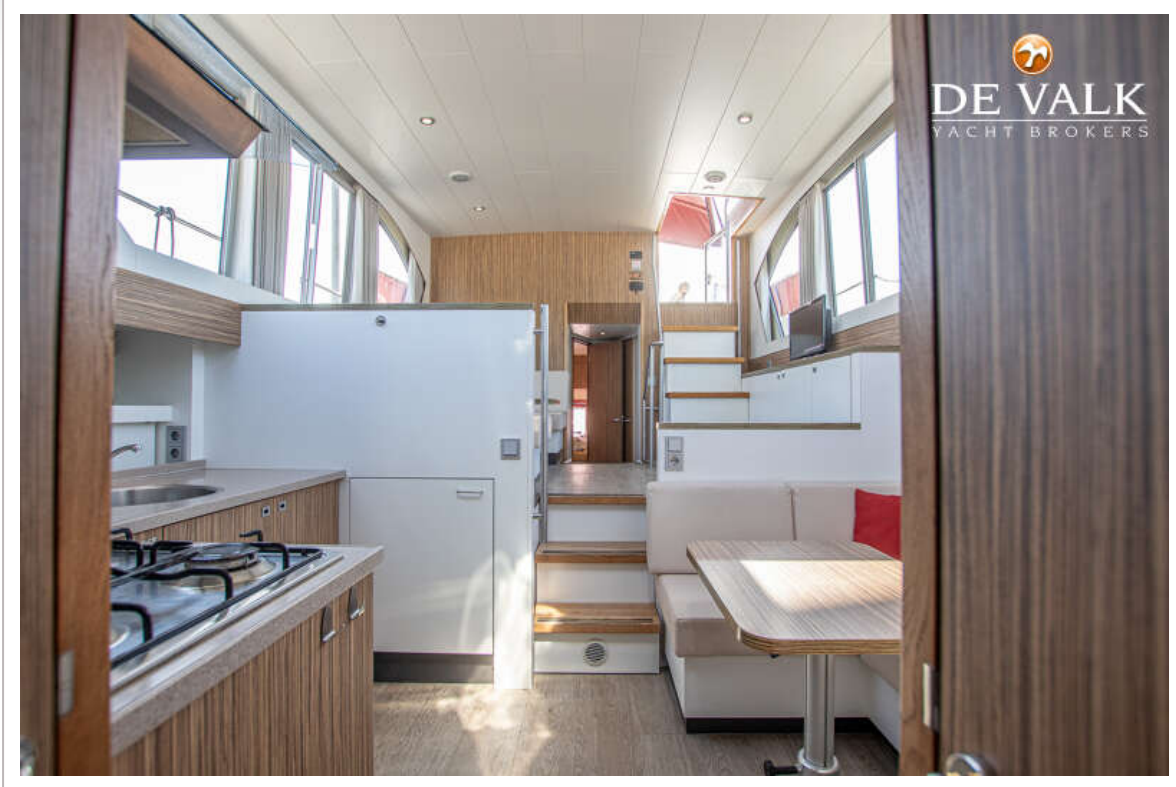
LINSKENS CATFISH 46



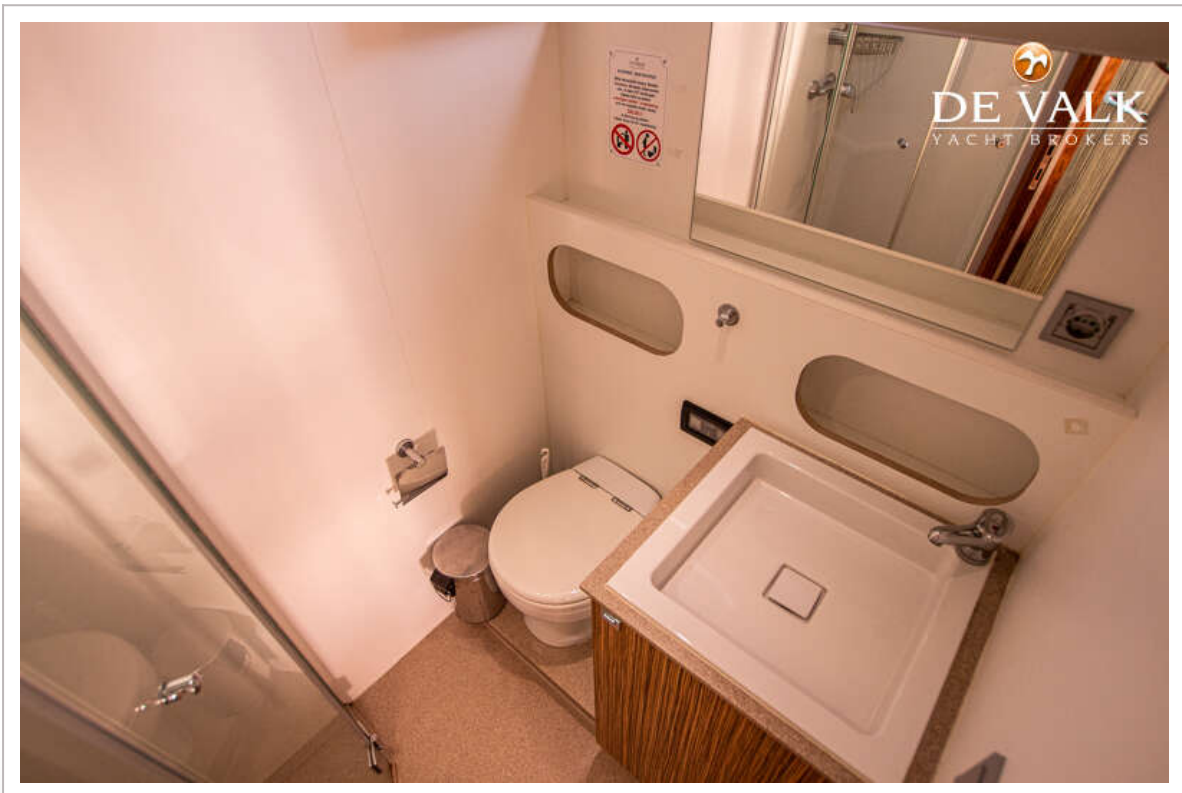
LINSKENS CATFISH 46



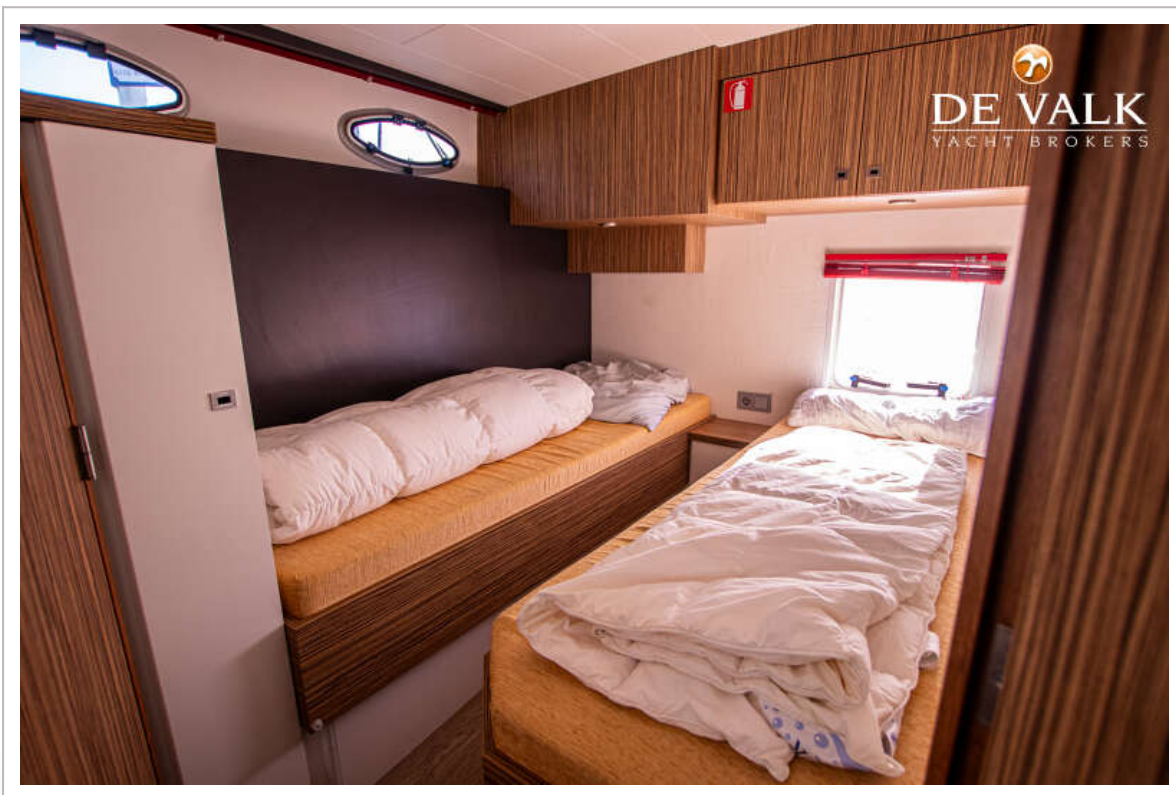
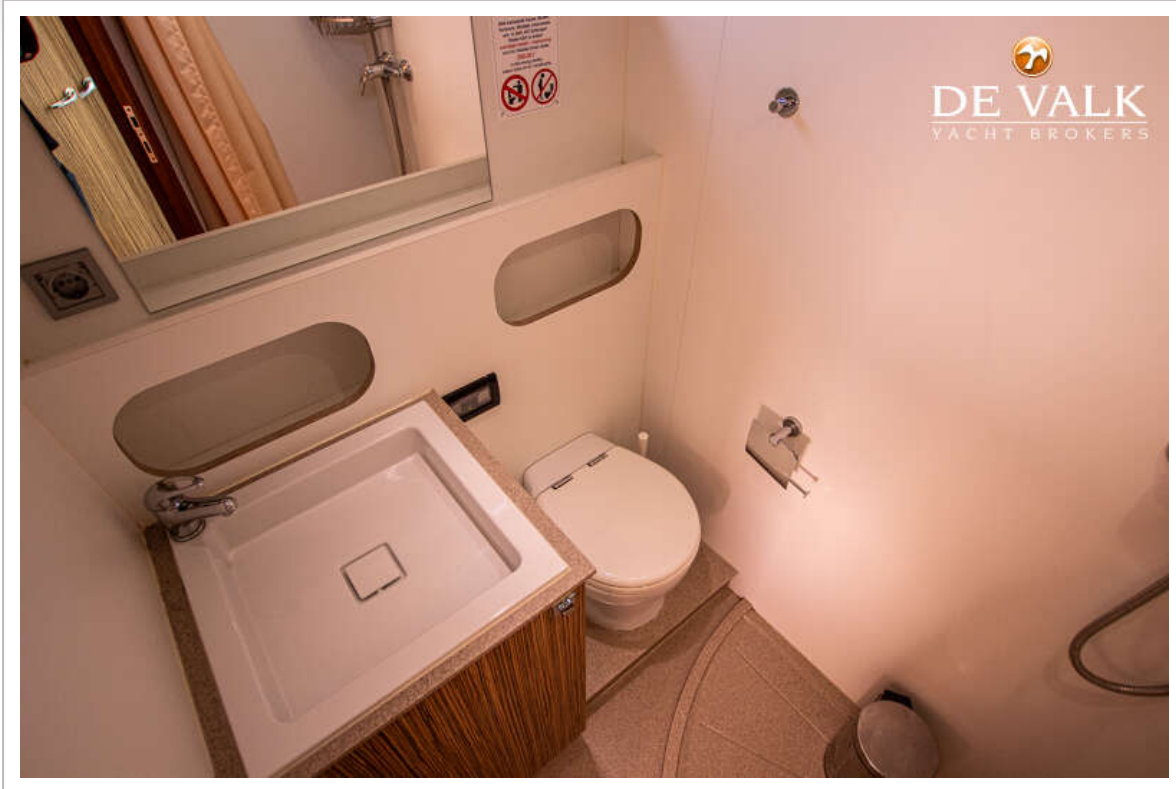
LINSKENS CATFISH 46



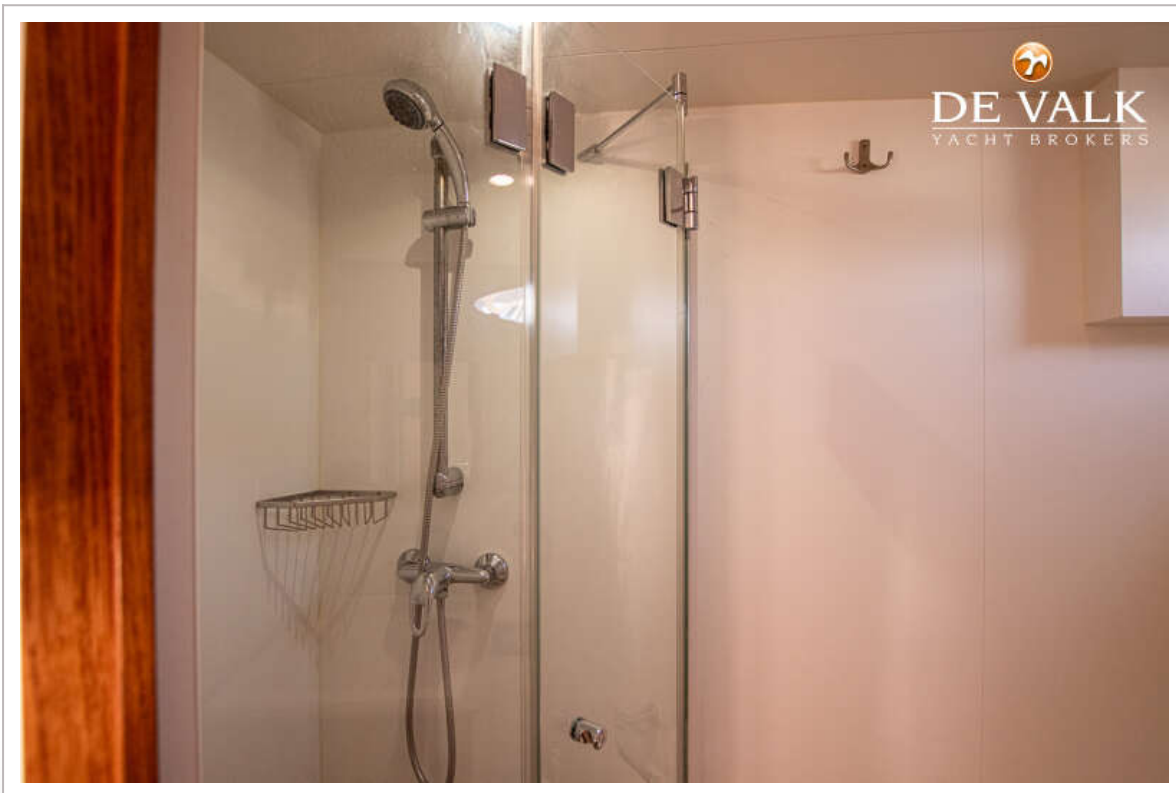
LINSKENS CATFISH 46



LINSKENS CATFISH 46



LINSKENS CATFISH 46



LINSKENS CATFISH 46

