



DE VALK  
YACHT BROKERS



## LAGOON 42



DE VALK  
YACHT BROKERS

## BROKER'S COMMENTS

Meet your perfect escape, this Lagoon 42 owner version is ready to take you wherever the sun leads. Privately owned and sailed. We know this Lagoon as we sold her to her current (very experienced) owner some years ago. Upon introduction the Lagoon 42 lapped up many international awards and rightfully so. Designed for couples and families who know how to travel in style, she offers generous 2+4 cabins, a luminous, modern interior full of space and light, and a sweeping cockpit made for prolonged stays in secluded bays. Your personal Mediterranean is waiting. More media available soon.

*Marc Weijenberg*

## SPECIFICATIONS

<b>Dimensions</b>	12.80 x 7.70 x 1.25 (m)	<b>Builder</b>	Construction Navale Bordeaux
<b>Built</b>	2017	<b>Cabins</b>	3
<b>Material</b>	GRP	<b>Berths</b>	6
<b>Engine(s)</b>	2 x Yanmar 4JH57 SD diesel	<b>Hp/Kw</b>	2 x 57.00 (hp), 41.95 (kw)
<b>Asking price</b>	€ 470.000 (VAT Paid)	<b>Lying</b>	contact sales office

## CONTACT

<b>Sales office</b>	De Valk Thuishaven	<b>Telephone</b>	+31 35 5829042
<b>Address</b>	Marinaweg 8 1361 AC Almere NL	<b>E-mail</b>	thuishaven@devalk.nl

## DISCLAIMER

These particulars are given in good faith as supplied but cannot be guaranteed.



## GENERAL

<b>Model</b>	LAGOON 42
<b>Type</b>	catamaran sailing yacht
<b>LOA (m)</b>	12,80
<b>LWL (m)</b>	12,50
<b>Beam (m)</b>	7,70
<b>Draft (m)</b>	1,25
<b>Air draft (m)</b>	20,60
<b>Headroom (m)</b>	2,05
<b>Year built</b>	2017
<b>Builder</b>	Construction Navale Bordeaux
<b>Country</b>	France
<b>Designer</b>	Peteghem & Lauriot-Prevost Nauta-Design
<b>Displacement (t)</b>	12,2
<b>CE norm</b>	A
<b>Hull material</b>	GRP
<b>Hull colour</b>	white
<b>Hull shape</b>	round-bilged
<b>Bilge keels</b>	yes
<b>Superstructure material</b>	GRP
<b>Deck material</b>	GRP
<b>Deck finish</b>	non-skid moulded in
<b>Superstructure deck finish</b>	non-skid moulded in
<b>Cockpit deck finish</b>	teak
<b>Window material</b>	perspex PMMA
<b>Deckhatch</b>	yes
<b>Flybridge</b>	yes
<b>Flybridge cover</b>	steering position completely covered
<b>Fuel tank (litre)</b>	polyethylene 285
<b>Fuel tank 2 (litre)</b>	polyethylene 285
<b>Level indicator (fuel tank)</b>	yes



<b>Freshwater tank (litre)</b>	polyethylene 300
<b>Level indicator (freshwater)</b>	yes
<b>Blackwater tank (litre)</b>	240
<b>Wheel steering</b>	yes
<b>Emergency tiller</b>	yes
<b>Extra info</b>	GRP infusion monolithic laminate construction and topsides with sandwich core.
<b>Extra info</b>	Boat of the Year 2017 - Cruising World, Best Boats 2017 - Multihull, Sailing Today Awards 2016 - Multihull, Asia Boating Award 2016 - Best Multihull Sailing Yacht

## ACCOMMODATION

<b>Cabins</b>	3
<b>Berths</b>	6
<b>Layout</b>	3-Cabin owners version
<b>Floor</b>	woodprint
<b>Open cockpit</b>	yes
<b>Deck saloon</b>	yes
<b>Headroom saloon (m)</b>	2,05
<b>Heating</b>	Via airconditioning (reverse cycle)
<b>Air-conditioning</b>	reverse cycle airco For all cabins
<b>Chart table</b>	yes
<b>Dinette</b>	yes
<b>Sliding door to aft deck</b>	triple slized
<b>Galley</b>	yes
<b>Countertop</b>	Duropol
<b>Sink</b>	stainless steel
<b>Cooker</b>	calor gas 3 burner
<b>Oven</b>	calor gas Eno
<b>Microwave</b>	Whirlpool
<b>Fridge</b>	2x, Whirlpool & Vitifrigo (both with freezer compartment), 1 x Isotherm in cockpit



Freezer	yes
Hot water system	220V + engine 40 ltr
Water pressure system	electrical
Manual and/or foot pump	yes
Owners cabin	French bed
Bed length (m)	2,10 x
Wardrobe	hanging/drawers/shelves
Bathroom	en suite I
Toilet	en suite
Toilet system	manual
Wash basin	in the bathroom
Shower	Spacious separate shower cabin with 2,05 headroom
Guest cabin 1	double bed
Bed length (m)	2.10
Wardrobe	hanging and shelves
Bathroom	shared II
Toilet	shared
Toilet system	manual
Wash basin	in the bathroom
Shower	shared
Guest cabin 2	double bed
Bed length (m)	2,10
Wardrobe	hanging and shelves
Washing machine/dryer combi	LG ThinQ direct drive 8.5/5 kg (220v)

## MACHINERY

No of engines	2
Make	Yanmar
Type	4JH57 SD
HP	57
kW	41.95



<b>Fuel</b>	diesel
<b>Year installed</b>	2017
<b>Maximum speed (kn)</b>	9
<b>Cruising speed (kn)</b>	7
<b>Consumption (l/hr)</b>	6
<b>Engine cooling system</b>	freshwater heat exchanger
<b>Drive</b>	sail-drive
<b>Saildrive seal</b>	yes
<b>Engine controls</b>	bowden cable
<b>Gearbox</b>	Yanmar Saildrive
<b>Propeller type</b>	folding
<b>Propeller blades</b>	3
<b>Shaft lubrication</b>	oilbath
<b>Manual bilge pump</b>	yes
<b>Electric bilge pump</b>	yes
<b>Bilge alarm</b>	yes
<b>Electrical installation</b>	12/220v
<b>Generator</b>	Cummins Onan 11.5 kW 1500 rpm
<b>Start battery</b>	2 x 110 ah
<b>Service battery</b>	4x 140 ah
<b>Generator battery</b>	1x 110 ah (2022)
<b>Windlass battery</b>	yes
<b>Battery monitor</b>	yes
<b>Battery charger</b>	Cristec automatic, YPower 12V/25A
<b>Inverter</b>	12/220v-2000 Watt
<b>Solar panel</b>	yes
<b>Shorepower</b>	with cable
<b>Watermaker</b>	60 ltr. Aqua Base ESW 601 (2022)

## NAVIGATION

<b>Compass</b>	yes
----------------	-----



Electric compass	on autopilot
Multi control display	2 x Brookes & Gatehouse
Depth sounder	Brookes & Gatehouse
Log	Brookes & Gatehouse
Windset	Brookes & Gatehouse
VHF	Brookes & Gatehouse V50
VHF handheld	Cobra
Autopilot	Brookes & Gatehouse separate control panel
Rudder angle indicator	yes
Radar	Brookes & Gatehouse
GPS	Brookes & Gatehouse
Plotter	2 x Brookes & Gatehouse Zeus 12"
AIS transponder	Navico
Navigation lights	yes

## EQUIPMENT

Cockpit cover	yes
Bimini	yes
Cockpit cushions	Custom made cushions and seating arrangement
Cockpit table	Teak
Cockpit chairs	yes
Bathing platform	yes
Boarding ladder	yes
Gangway	yes
Deck shower	warm & cold water
Anchor	Rocna 32 kg
Anchor chain	60 mtr, guided to locker on custom built stainless steel frame
Windlass	electrical Quick 12v
Dinghy	Highfield Classic 340, type bow locker, Hypalon tubes
Outboard	Honda 20hp (4-stroke)
Outboard support	yes



<b>Davits</b>	Solid designed launch system, easy handling
<b>Sea railing</b>	wire
<b>Grab rail (superstructure)</b>	stainless steel
<b>Life raft</b>	container Transocean
<b>Life raft (pers)</b>	6
<b>Radar reflector</b>	yes
<b>Fenders</b>	yes
<b>Mooring lines</b>	yes
<b>TV</b>	yes
<b>Radio-cd player</b>	Fusion MS V 750
<b>Cockpit speakers</b>	yes
<b>Speakers in cabin</b>	yes
<b>Fire extinguisher</b>	yes

## RIGGING

<b>Rigging</b>	fractional
<b>Standing rigging</b>	wire
<b>Material mast</b>	aluminium
<b>Spreaders</b>	2 x set
<b>Battcars</b>	yes
<b>Fully battened mainsail</b>	In lazy bag
<b>Genoa</b>	yes
<b>Genoa furler</b>	yes
<b>Code Zero</b>	yes
<b>Reefing System</b>	quick-one-line-reefing
<b>Boomvang</b>	gasspring
<b>Primary sheet winch</b>	Harken 46 ST two speed electric
<b>Secondary sheet winch</b>	Harken 46 ST two speed electric
<b>Halyard winches</b>	Harken 2 speed
<b>Winchcovers</b>	yes





**DE VALK**  
YACHT BROKERS

SOON MORE PICTURES ON OUR WEBSITE  
BINNENKORT MEER FOTO'S OP ONZE WEBSITE  
BALD MEHR BILDER AUF UNSERE WEBSITE



# LAGOON 42



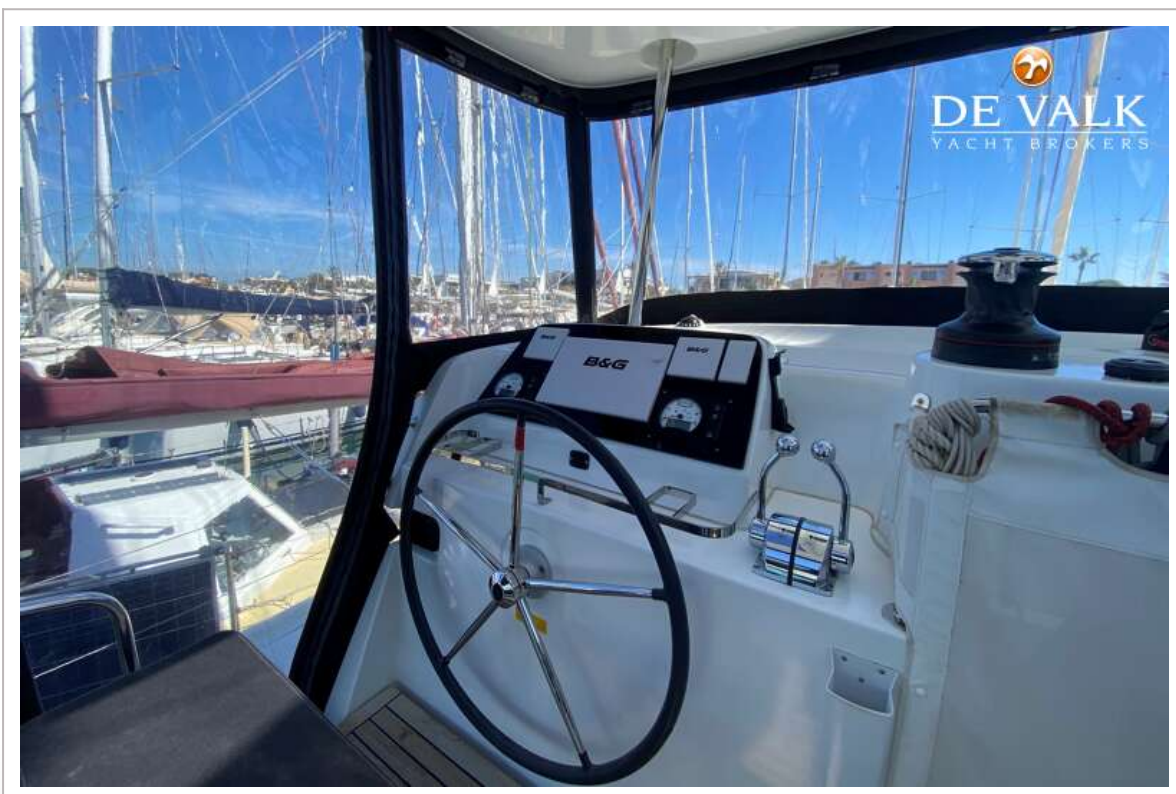
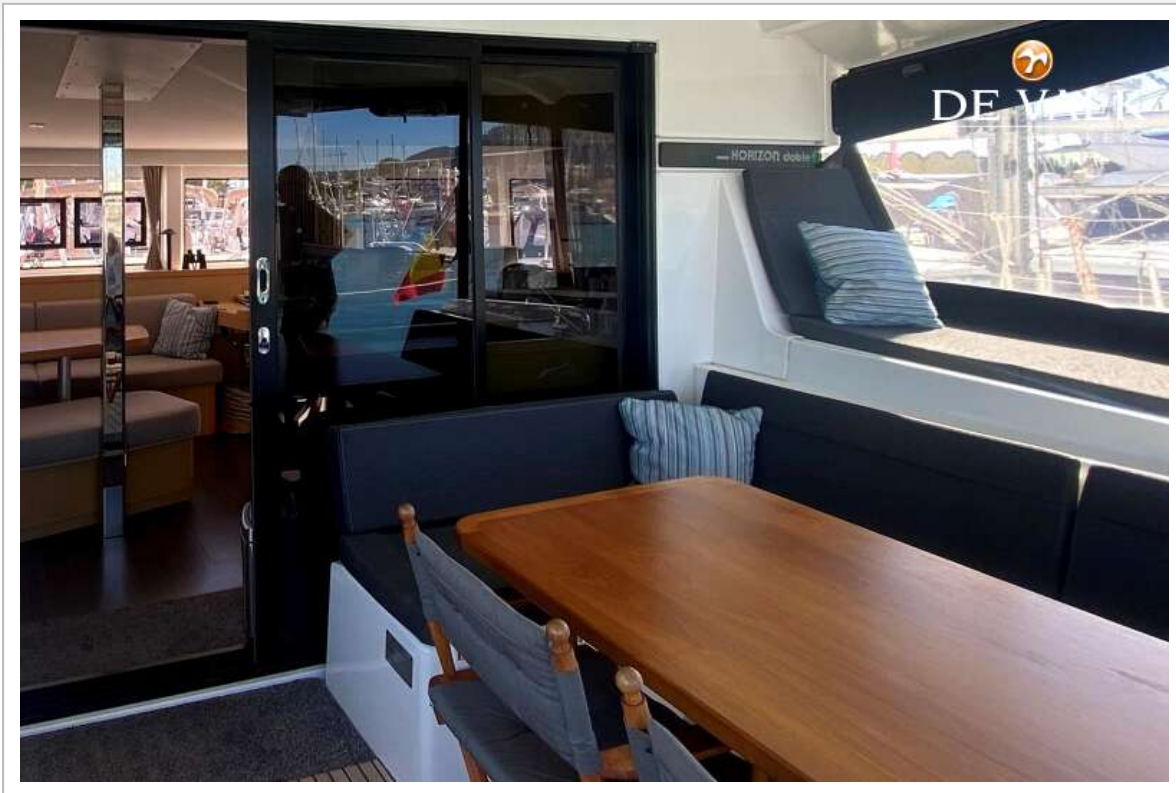
# LAGOON 42



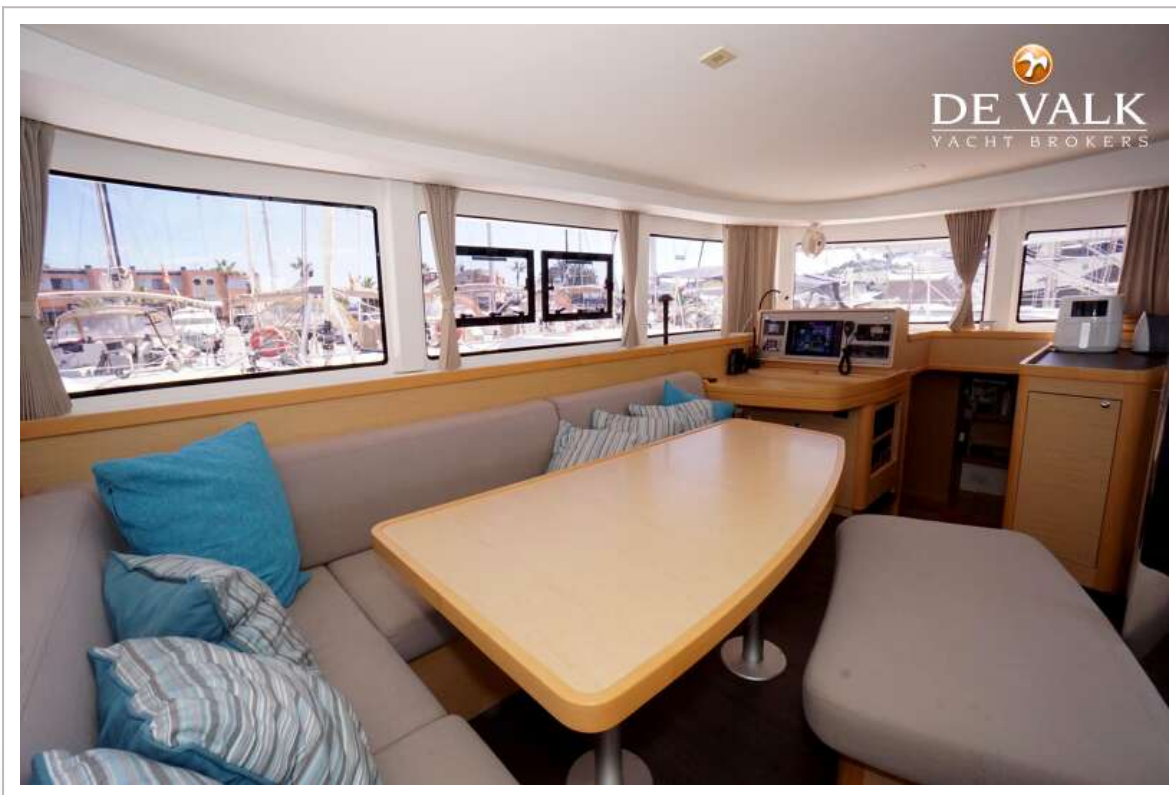
# LAGOON 42



# LAGOON 42



# LAGOON 42





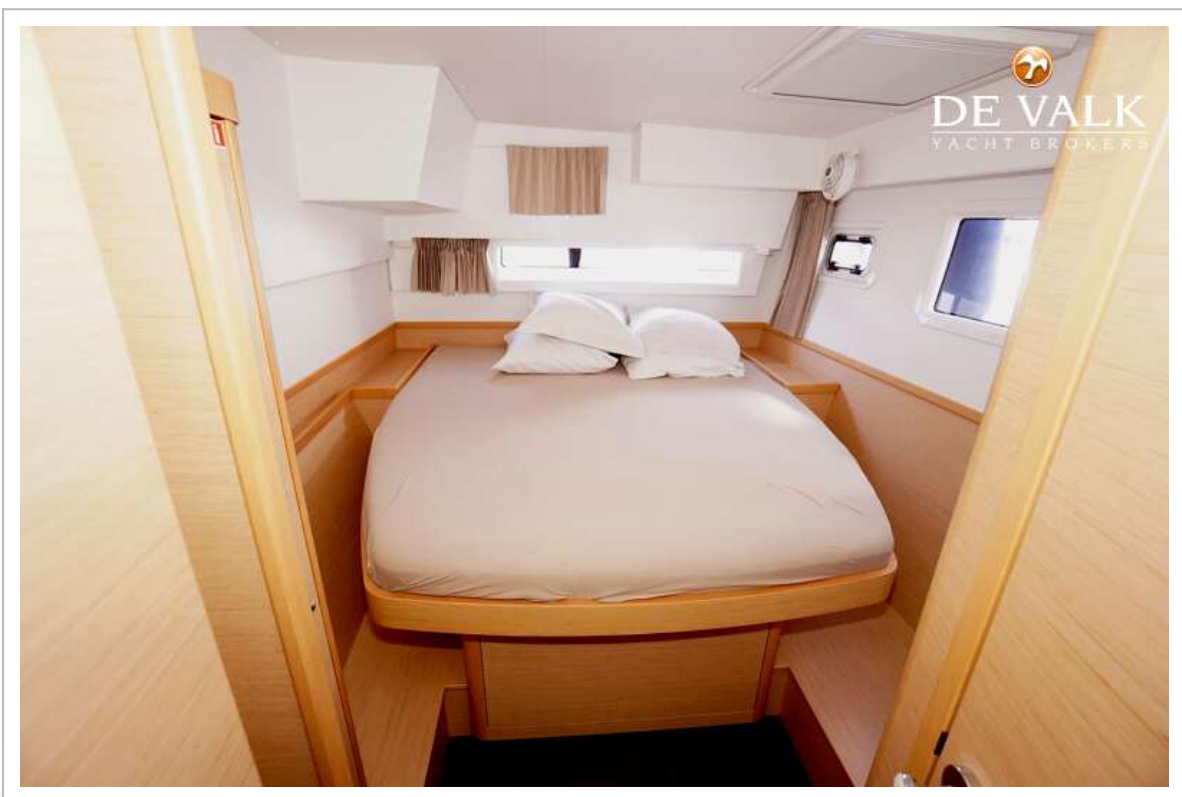
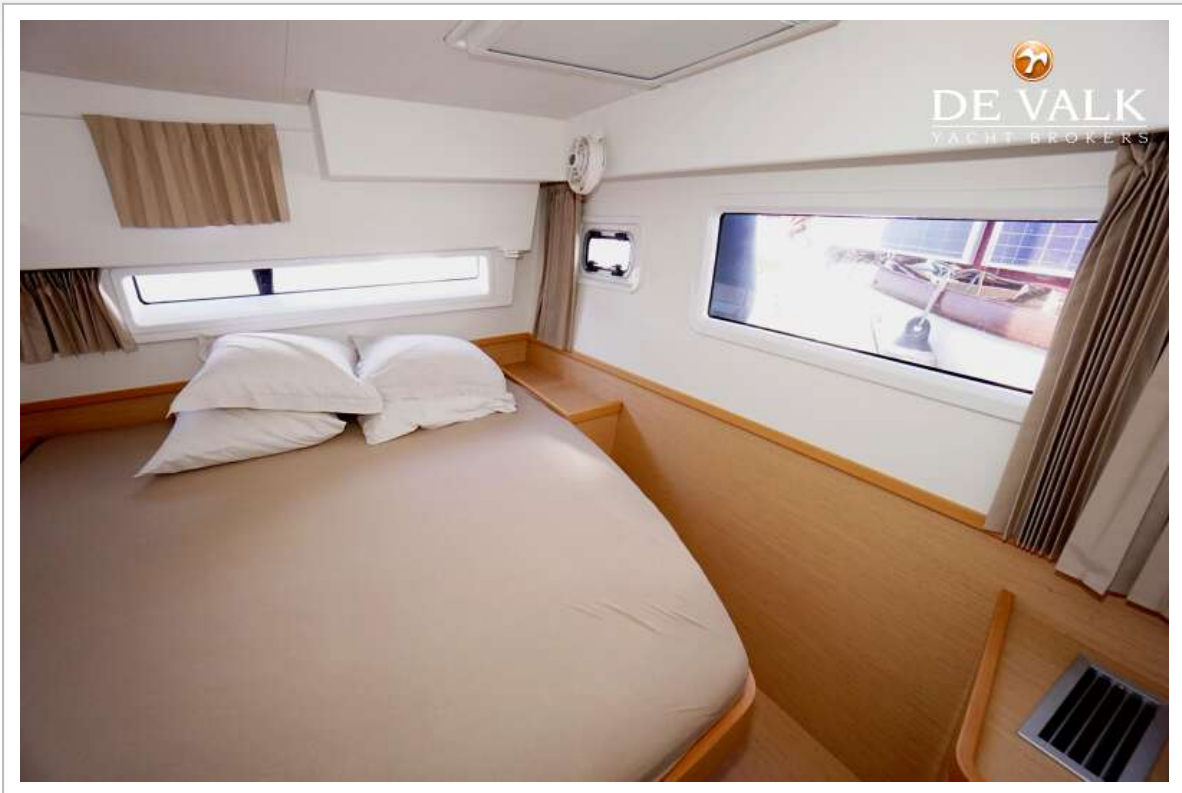
# DE VALK

YACHT BROKERS

SOON MORE PICTURES ON OUR WEBSITE  
BINNENKORT MEER FOTO'S OP ONZE WEBSITE  
BALD MEHR BILDER AUF UNSERE WEBSITE



# LAGOON 42



# LAGOON 42



# LAGOON 42





**DE VALK**  
YACHT BROKERS

SOON MORE PICTURES ON OUR WEBSITE  
BINNENKORT MEER FOTO'S OP ONZE WEBSITE  
BALD MEHR BILDER AUF UNSERE WEBSITE

