



HANSE 445



DE VALK
YACHT BROKERS

HANSE 445

BROKER'S COMMENTS

Hanse 445 "Argo", built in 2011 by Hanse Yacht AG and designed by Judel/vrolijk & co + Hanse Yachts Design. Saloon with galley, owners cabin in front with private shower and toilet, two double cabins and shared bathroom. A lot of recent maintenance like: new standing rigging from 2024, saildrive seal from 2024, Sprayhood and cockpit cover from 2024, 2 service batteries from 2024, mainsail and jib from 2023 etc. Easy sailing due her inmast furling, furling self tacking jib and Lewmar electric whiches. Make an appointment to view "Argo" and maybe you will start new adventures with her shortly?

Arne Doodeman

SPECIFICATIONS

Dimensions	13.52 x 4.38 x 2.25 (m)	Builder	Hanse Yachts AG
Built	2011	Cabins	3
Material	GRP	Berths	6
Engine(s)	1 x Volvo Penta D2-75 F diesel	Hp/Kw	75.00 (hp), 55.20 (kw)
Asking price	€ 229.000 (VAT Paid)	Lying	contact Monnickendam

CONTACT

Sales office	De Valk Monnickendam B.V.	Telephone	+31 (0)299 65 63 50
Address	Hoogedijk 6 1145 PM Katwoude NL	E-mail	monnickendam@devalk.nl

DISCLAIMER

These particulars are given in good faith as supplied but cannot be guaranteed.



HANSE 445

GENERAL

Model	HANSE 445
Type	sailing yacht
LOA (m)	13,52
LWL (m)	12,20
Beam (m)	4,38
Draft (m)	2,25
Year built	2011
Builder	Hanse Yachts AG
Country	Germany
Designer	Judel/vrolijk & co + Hanse Yachts Design
Displacement (t)	11,3
Ballast (tonnes)	Approx. 3.500kg
CE norm	A
Hull material	GRP
Hull colour	white
Hull shape	round-bilged
Keel type	fin keel with bulb
Superstructure material	GRP
Rubbing strake	Teak with stainless steel strip
Deck material	GRP
Deck finish	teak
Superstructure deck finish	non-skid moulded in
Cockpit deck finish	teak
Antifouling (year)	2024, will be renewed spring 2026
Deckhatch	8x
Fuel tank (litre)	stainless steel - Approx. 220 litre
Level indicator (fuel tank)	Via the digital display in the cupboard near the chart table.
Freshwater tank (litre)	polyethylene - Approx. 450 litre
Level indicator (freshwater)	Via the digital display in the cupboard near the chart table.
Blackwater tank (litre)	polyethylene - 2 x approx. 30 litre



Level indicator (blackwater)	Via the digital display in the cupboard near the chart table
Wheel steering	cable steering - Double wheel steering in the cockpit
Outside helm position	Jefa double steering system
Emergency tiller	yes
Extra info	Retractable mooring cleats
Extra info	Large storage in the bow

ACCOMMODATION

Cabins	3
Berths	6
Interior	Light modern interior
Layout	Owners cabin with French berth in the front, with wardrobes and ensuite shower and toilet room. Saloon with roundseat group, chart table and galley. Shared bathroom with shower/toilet/washbowl. Two double cabins with wardrobe in the stern.
Floor	woodprint Light coloured floor
Open cockpit	yes
Saloon	yes
Heating	diesel ducted hot air - Eberspacher D4, remote control via mobile phone possible.
Heating 2	diesel ducted hot air -Eberspacher D4 (overhauled), remote control via phone possible.
Chart table	yes
Sliding door to cockpit	yes
Galley	yes
Countertop	corian - Black coloured corian worktop
Sink	stainless steel
Cooker	calor gas - 2 burner Eno
Oven	Eno
Microwave	LG Microwhave
Fridge	Isotherm
Hot water system	220V + engine - Boiler



Water pressure system	electrical
Owners cabin	French bed - Seminautic Ocean matras with topper from 03-2024.
Wardrobe	yes
Bathroom	en suite
Toilet	Separate toilet room with washbowl in the ownerscabin.
Toilet system	electric - Jabsco Lite Flush electric toilet
Guest cabin 1	double bed
Wardrobe	yes
Bathroom	shared
Toilet	Jabsco Lite Flush electric toilet
Toilet system	electric
Wash basin	yes
Shower	yes
Guest cabin 2	double bed
Wardrobe	yes
Extra info	Gas certificate valid till 2027.

MACHINERY

No of engines	1
Make	Volvo Penta
Type	D2-75 F
HP	75
kW	55.20
Fuel	diesel
Engine cooling system	freshwater heat exchanger
Drive	sail-drive
Saildrive seal	New saildrive seal 06-2024
Engine controls	bowden cable
Bowthruster	electric - RMC retractable bowthruster
Propeller type	folding - 3 bladed folding propeller



Manual bilge pump	Plastimo manual bilge pump in the cockpit
Electric bilge pump	yes
Start battery	1 x AGM Technology
Service battery	2 x Victron 165Ah AGM batteries (08-2025)
Battery monitor	Victron SmartShunt IP64 for battery information on your mobile phone. Via the digital display in the cupboard near the chart table
Battery charger/inverter	Victron MultiPlus Compact 12v/1600w/70amp
Shorepower	with cable

NAVIGATION

Compass	Plastimo Contest 130 liquid compass
Multi control display	2x Simrad IS20 displays
Depth sounder	Via the Simrad IS20 screens
Log	Via the Simrad IS20 screens
VHF	Vesper Cortex Smart AIS/vhf/transponder, Simrad VHF Working but not connected.
VHF handheld	Vesper Cortex H1P
Autopilot	Simrad AP24 autopilot with Simrad IS40 controller
Rudder angle indicator	Visible in the screen of the autopilot
Plotter/GPS	Simrad MSE 12" chartplotter
AIS transponder	Vesper Cortex Smart AIS/VHF/transponder
Extra info	yes

EQUIPMENT

Sprayhood	Sprayhood with cockpitcover till the steeringwheels, 06-2024 by Halver Sails
Cockpit cover	yes
Cockpit cushions	yes
Cockpit table	Teak table in the cockpit
Bathing platform	Folding bathing platform
Boarding ladder	stainless steel



Anchor	Delta
Anchor chain	Stainless steel chain
Windlass	electrical - Lewmar electrical windlass
Outboard support	yes
Sea railing	wire
Grab rail (superstructure)	stainless steel
Railing side opening gates	2 x
Pushpit	Stainless steel
Pulpit	Stainless steel
Radar reflector	Trilens 12" radarreflector (2024)
Fenders	yes
Mooring lines	yes
TV	LG Smart TV
Radio-cd player	Sony CDX-GT33U Radio/CD player
Clock - barometer	Clock and barometer

RIGGING

Rigging	fractional
Standing rigging	Dyform - Dryform standing rigging from 08-2024 by Tuned Rigs & Ropes
Brand mast	Sparcraft
Material mast	aluminium
Spreaders	2 x spreaders
Mainsail	Sail Select: High preformance cruising mainsail, DCXi 11.3OZ licht grijs, Approx. 52m2, tri-radiaal gesneden, incl. Sunbrella cadet grey UV bescherming op de schoothoek, inmast. New 07-2023
Fully battened mainsail	yes
Stoway mast	yes



Jib	- Sailselect: New High performance selftacking jib, DCXi 11.3Oz licht grijs, tri-radiaal gesneden, incl. Sunbrella cadet grey UV bescherming op de schoothoek. New 07-2023 on furling. - Sailselect selftacking jib, Off-shore/racing, 10.1 Oz tri-radiaal Challenge Newport ProRadial Dacron. New 04-2021.
Genoa furler	Selden Furlex 300 TD
Code Zero	yes
Self tacking jib installation	yes
Reefing System	main in-mast furling
Backstay adjuster	mechanical
Boomvang	mechanical and tackle - Sparcraft
Genoa sheetwinches	2 x Lewmar 48 electric winches



HANSE 445



HANSE 445



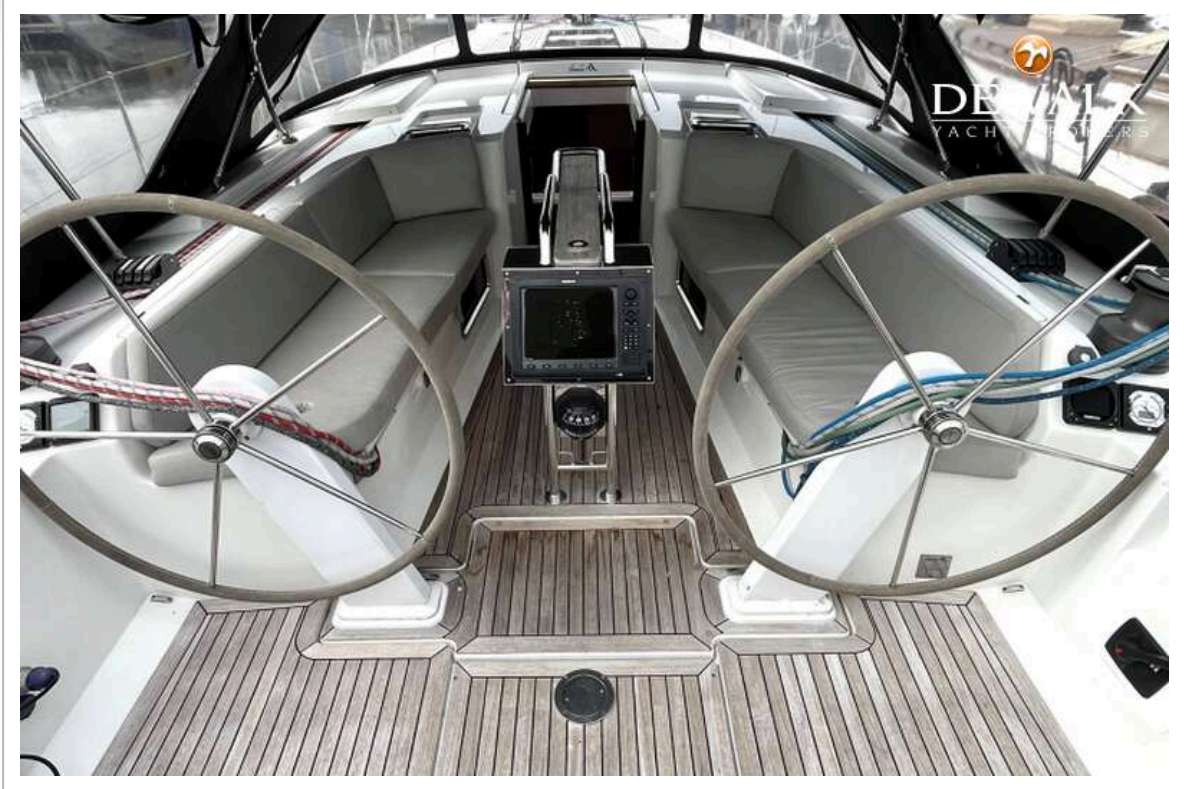
HANSE 445



HANSE 445



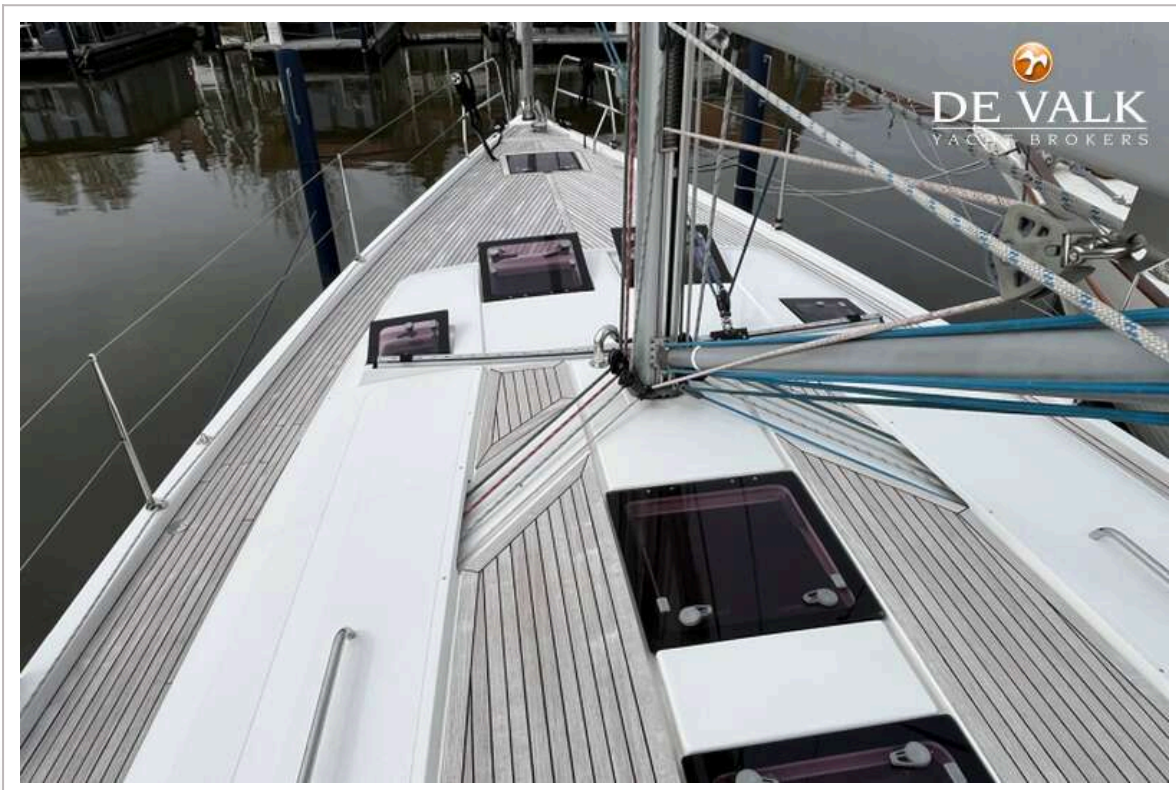
HANSE 445



HANSE 445



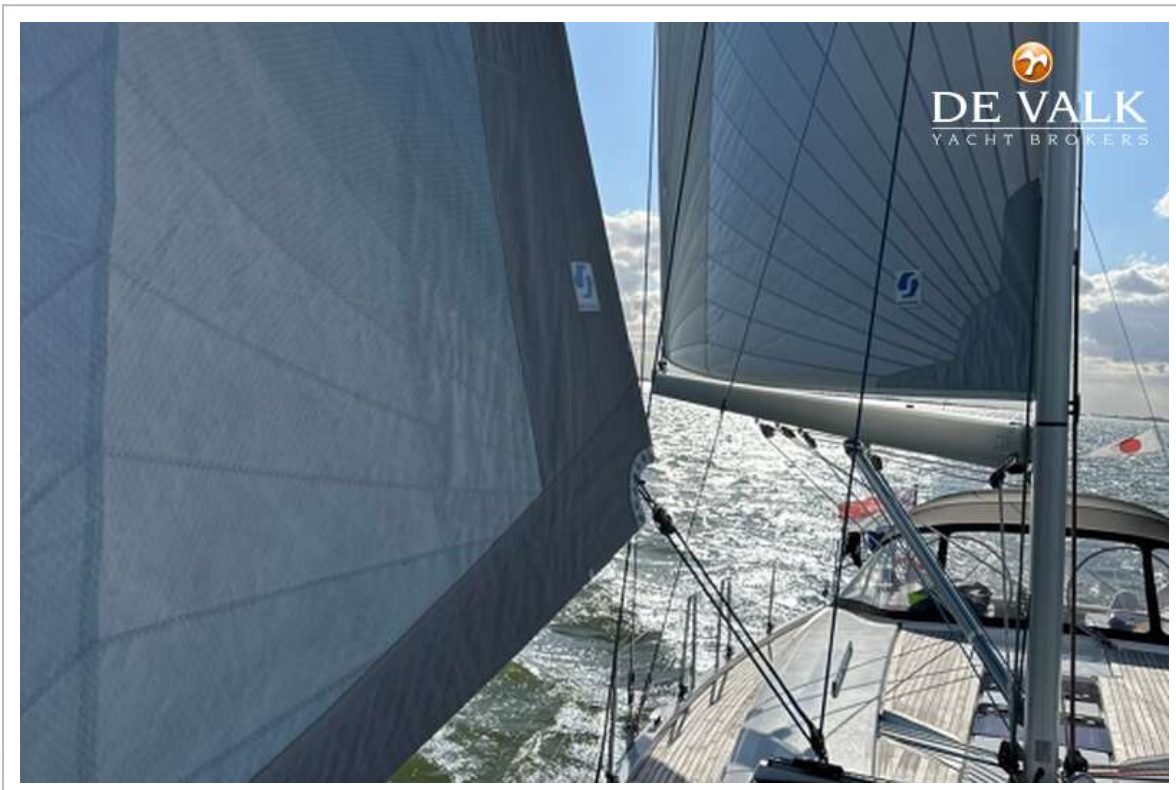
HANSE 445



HANSE 445



HANSE 445



HANSE 445



HANSE 445



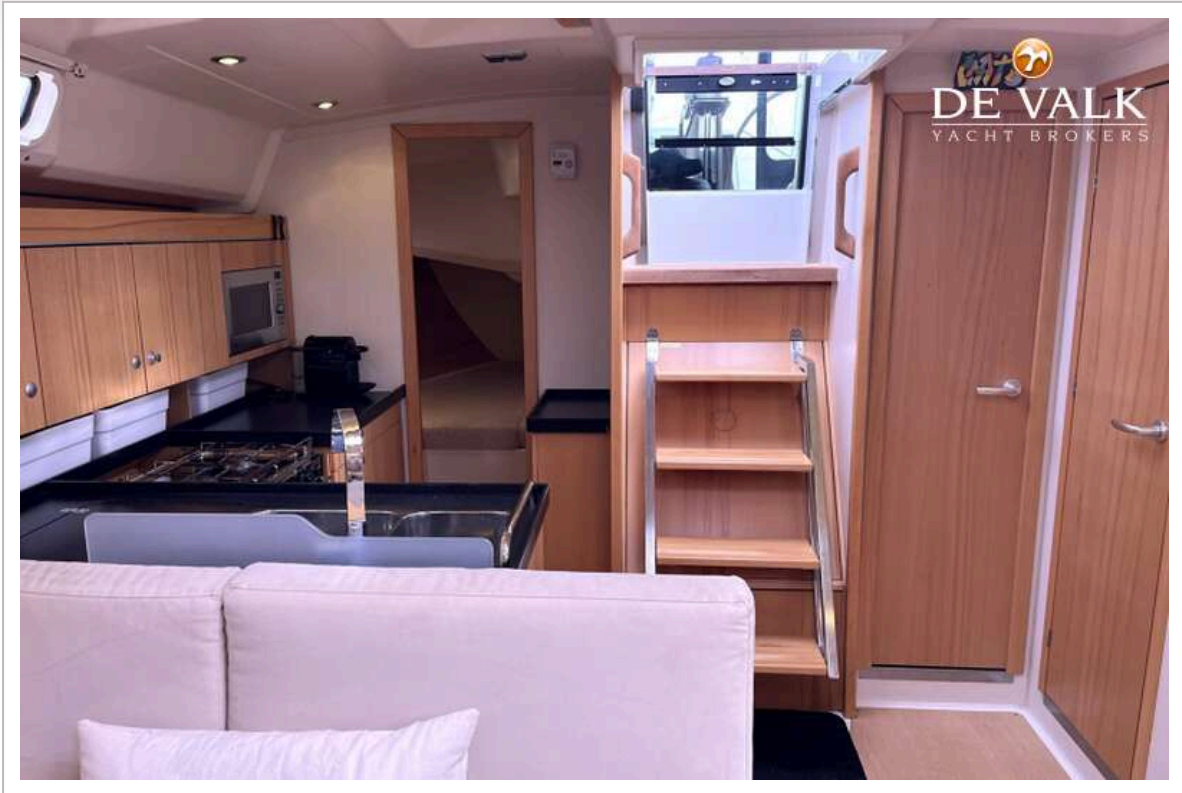
HANSE 445



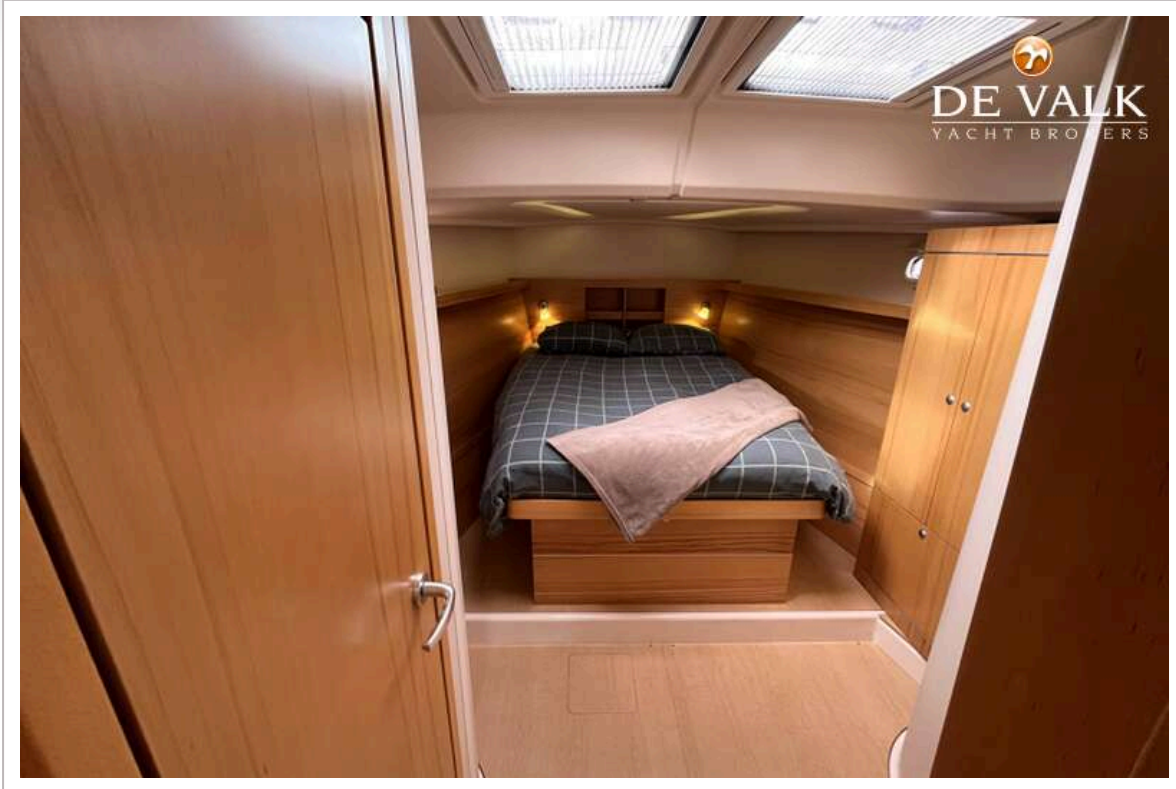
HANSE 445



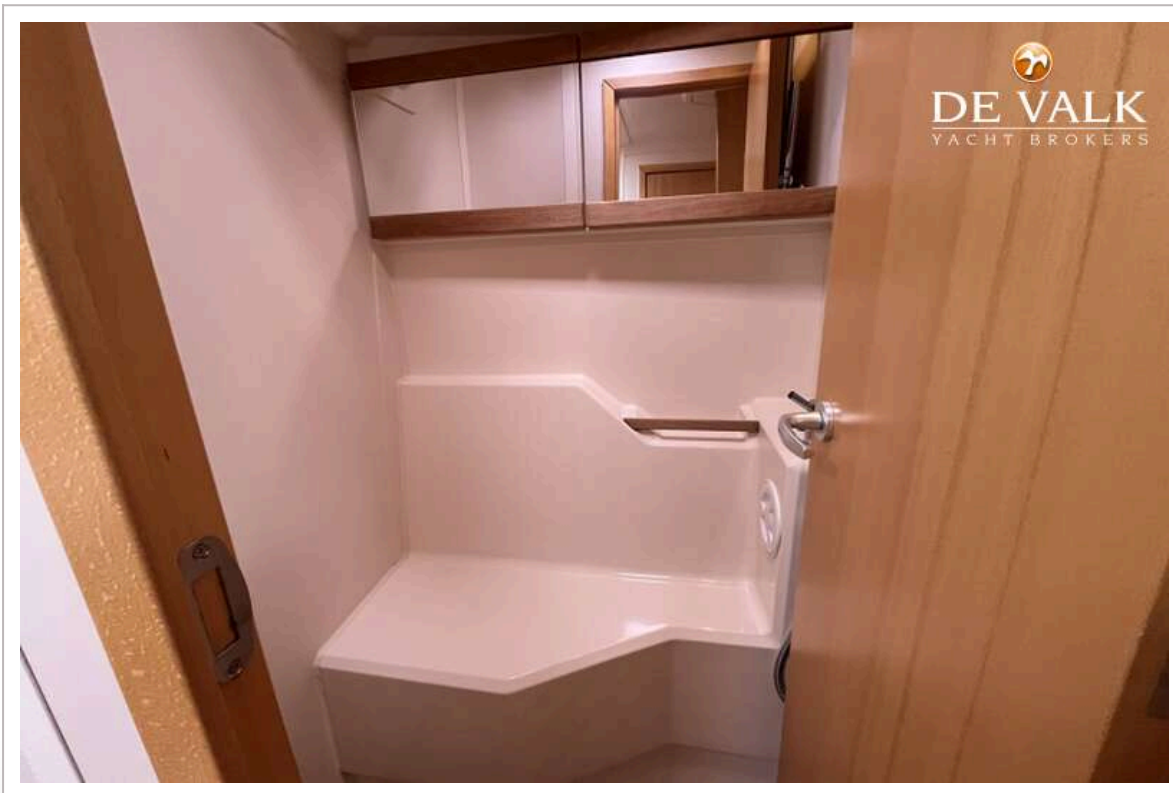
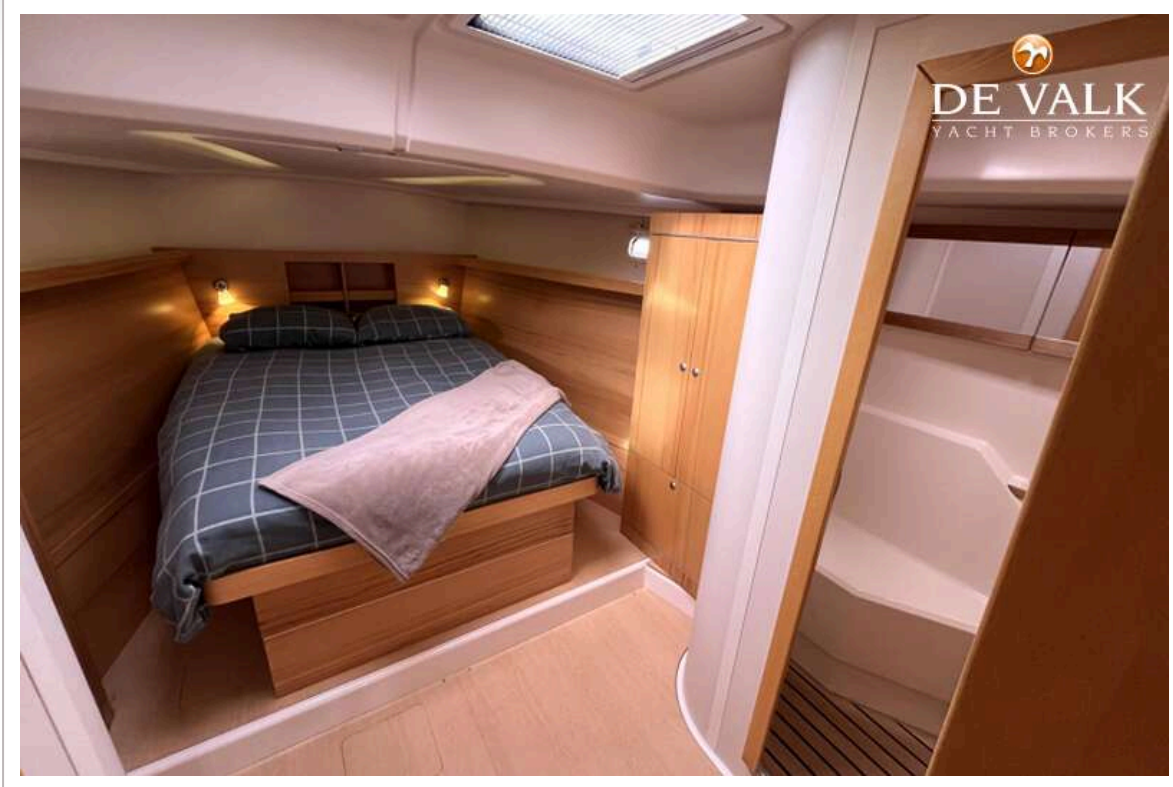
HANSE 445



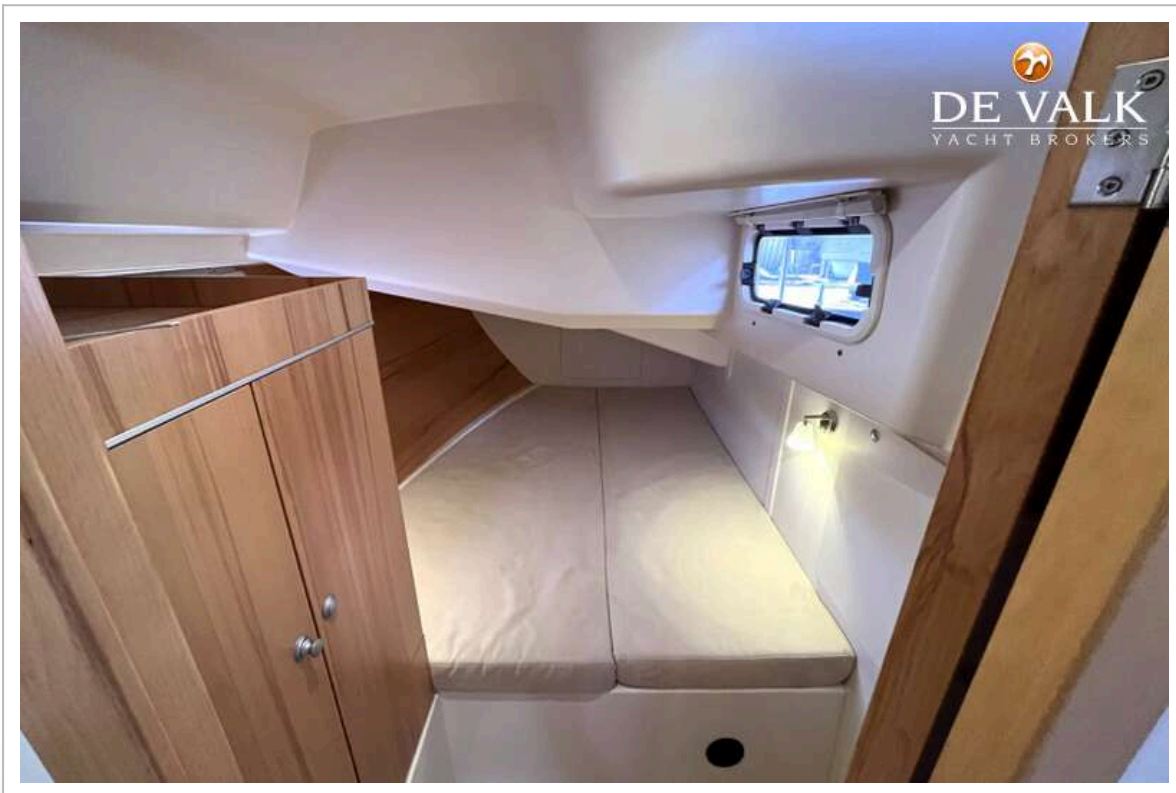
HANSE 445



HANSE 445



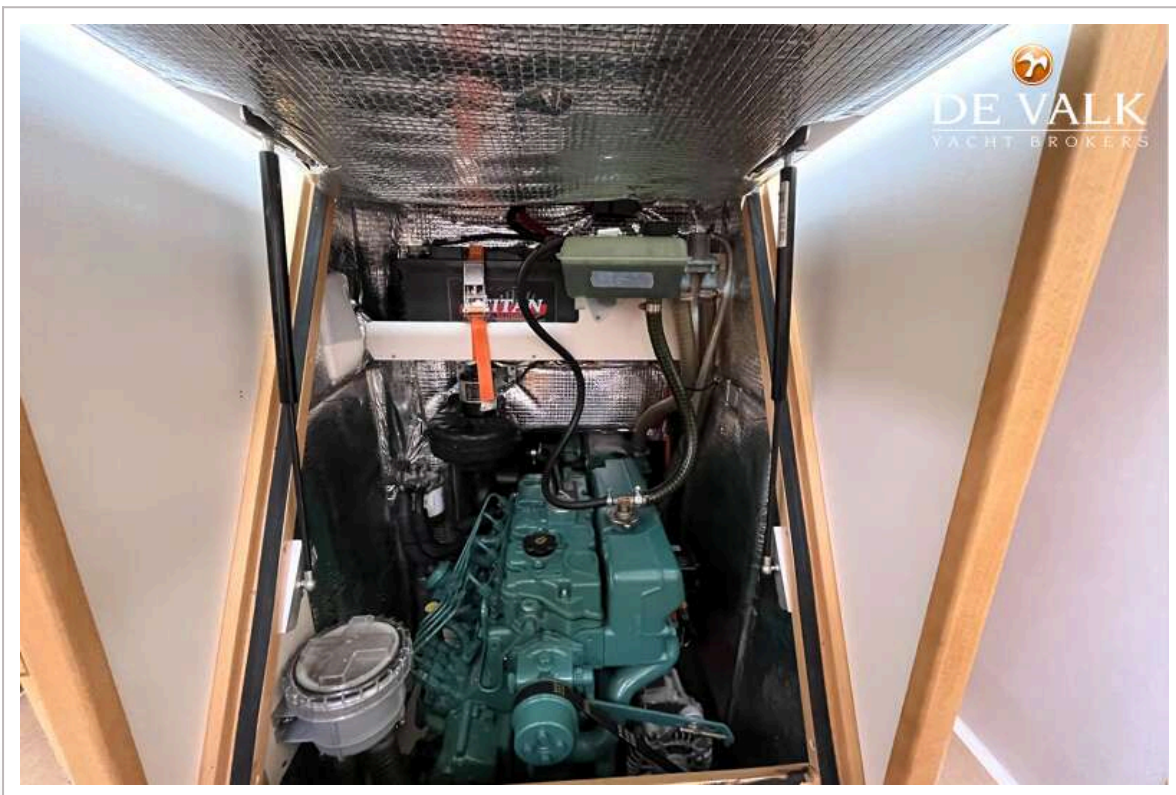
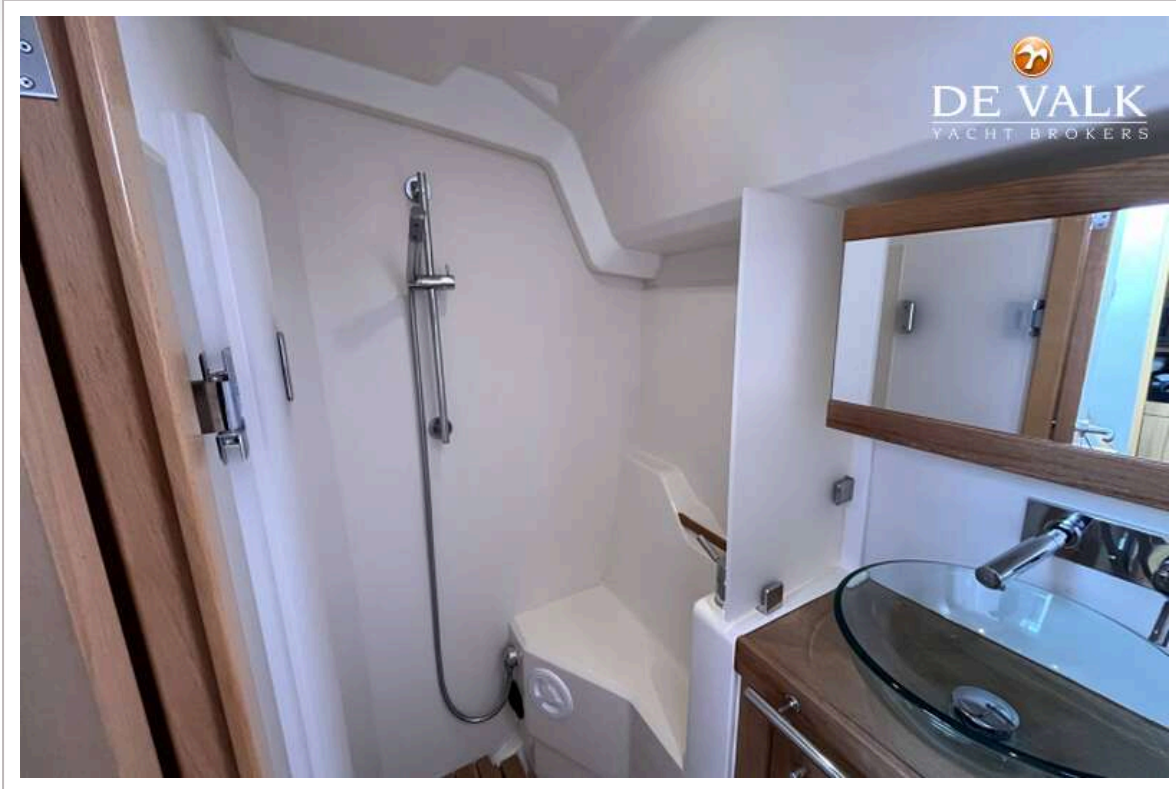
HANSE 445



HANSE 445



HANSE 445



HANSE 445

