



MYABCA 42 TR



DE VALK
YACHT BROKERS

BROKER'S COMMENTS

This MYABCA 42 TR inspired by the famous MENORQUIN deals with great qualities for a 12-meter motor boat. Her looks give away comfort and security, and that's exactly how she was built; two powerful Volvo engines, generator and solar panels, also including big tanks; she is perfectly independent for any waters. This MYABCA 42 TR is equipped with full navigation instruments and her sturdy looks offer an exciting time not only as a pleasant and classic vacation boat with a dinghy but also as an ideal boat for year-around living, cruising and fishing.

Yume Pellegrino

SPECIFICATIONS

| | | | |
|---------------------|------------------------------|----------------|------------------------------|
| Dimensions | 12.00 x 4.30 x 1.15 (m) | Builder | Myabca |
| Built | 1998 | Cabins | 2 |
| Material | GRP | Berths | 4 |
| Engine(s) | 2 x Volvo KAMD44P-edc diesel | Hp/Kw | 2 x 260.00 (hp), 191.36 (kw) |
| Asking price | € 124.000 (VAT Paid) | Lying | contact Antibes |

CONTACT

| | | | |
|---------------------|--|------------------|-------------------|
| Sales office | De Valk Antibes | Telephone | +33 492 91 0202 |
| Address | 2, Avenue de Verdun 06600 Antibes FR | E-mail | antibes@devalk.nl |

DISCLAIMER

These particulars are given in good faith as supplied but cannot be guaranteed.



GENERAL

| | |
|-----------------------------|-----------------|
| Model | MYABCA 42 TR |
| Type | motor yacht |
| LOA (m) | 12,00 |
| Beam (m) | 4,30 |
| Draft (m) | 1,15 |
| Year built | 1998 |
| Builder | Myabca |
| Country | Spain |
| Displacement (t) | 13 |
| CE norm | A |
| Hull material | GRP |
| Hull colour | white |
| Hull shape | round-bilged |
| Superstructure material | GRP |
| Rubbing strake | stainless steel |
| Deck material | GRP |
| Deck finish | teak |
| Superstructure deck finish | teak |
| Cockpit deck finish | teak |
| Fuel tank (litre) | 600 |
| Fuel tank 2 (litre) | 600 |
| Level indicator (fuel tank) | yes |
| Freshwater tank (litre) | 600 |
| Blackwater tank (litre) | 200 |
| Greywater tank (litre) | yes |
| Inside helm position | yes |

ACCOMMODATION

| | |
|--------|---|
| Cabins | 2 |
| Berths | 4 |



| | |
|-------------------------------|---------------------|
| Heating | Mobile heat pump |
| Dinette to convert into berth | yes |
| Opening door to aft deck | yes |
| Galley | yes |
| Countertop | yes |
| Sink | yes |
| Cooker | ceramic X2 |
| Microwave/oven combi | yes |
| Fridge | yes |
| Freezer | yes |
| Hot water system | yes |
| Owners cabin | French bed |
| Bed length (m) | 2 |
| Wardrobe | hanging and shelves |
| Bathroom | shared |
| Toilet | shared |
| Toilet system | electric |
| Wash basin | in the bathroom |
| Shower | separate + shared |
| Guest cabin 1 | bunk bed |
| Bed length (m) | 2 |
| Wardrobe | drawers and shelves |
| Bathroom | shared |
| Toilet | shared |
| Toilet system | electric |
| Wash basin | in the bathroom |
| Shower | separate + shared |

MACHINERY

| | |
|---------------|-------|
| No of engines | 2 |
| Make | Volvo |



| | |
|-------------------------|--|
| Type | KAMD44P-edc |
| HP | 260 |
| kW | 191.36 |
| Fuel | diesel |
| Engine hours | 980 |
| Bowthruster | yes |
| Generator | KOHLER – 8kW |
| Running hours generator | 200 |
| Batteries | 400Ah |
| Start battery | yes |
| Service battery | yes |
| Battery charger | SBC 220/12/25 |
| Inverter | 400w – Victron - 2021 |
| Solar panel | X2 – removable - 150wc + MPPT Victron controller |
| Shorepower | with cable |

NAVIGATION

| | |
|-------------------|------------------------------|
| Compass | yes |
| Depth sounder | yes |
| VHF | yes |
| Autopilot | yes |
| Radar | SIMRAD – Broadband 3G - 2017 |
| GPS | yes |
| Plotter | SIMRAD – GO9 XSE - 2017 |
| EPIRB | yes |
| Navigation lights | yes |

EQUIPMENT

| | |
|---------------|------|
| Cockpit cover | 2025 |
| Bimini | yes |
| Sun awning | yes |

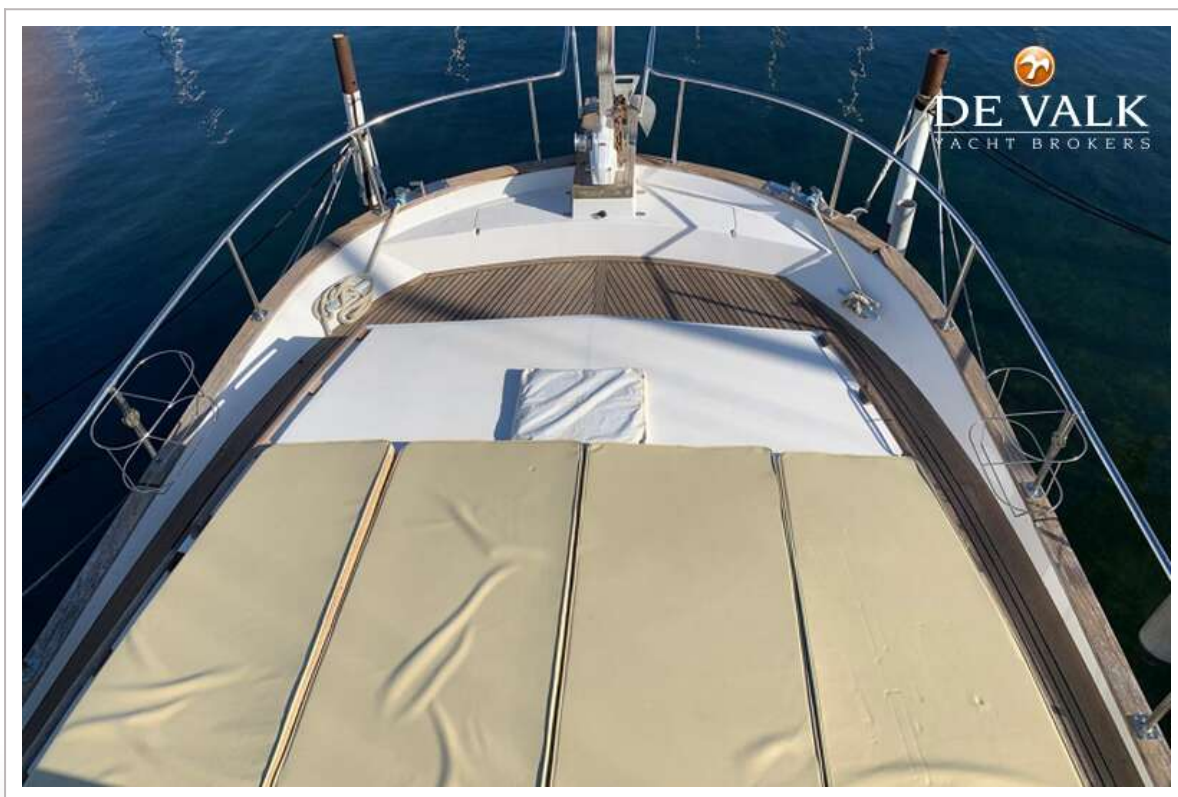


| | |
|-------------------|--|
| Winter cover | 2025 |
| Cockpit cushions | yes |
| Cockpit table | yes |
| Cockpit chairs | yes |
| Bathing platform | yes |
| Boarding ladder | yes |
| Gangway | Teak |
| Deck shower | On cockpit |
| Anchor | yes |
| Anchor chain | 60m |
| Windlass | electrical |
| Dinghy | inflatable ZODIAC |
| Outboard | YAMAHA 4hp |
| Deck crane | Electro-hydraulic crane for dinghy on roof |
| Sea railing | yes |
| Wiper | yes |
| Fenders | yes |
| TV | yes |
| TV receiver | Amplified antenna |
| Radio | yes |
| Cockpit speakers | yes |
| Speakers in salon | yes |
| Clock - barometer | yes |

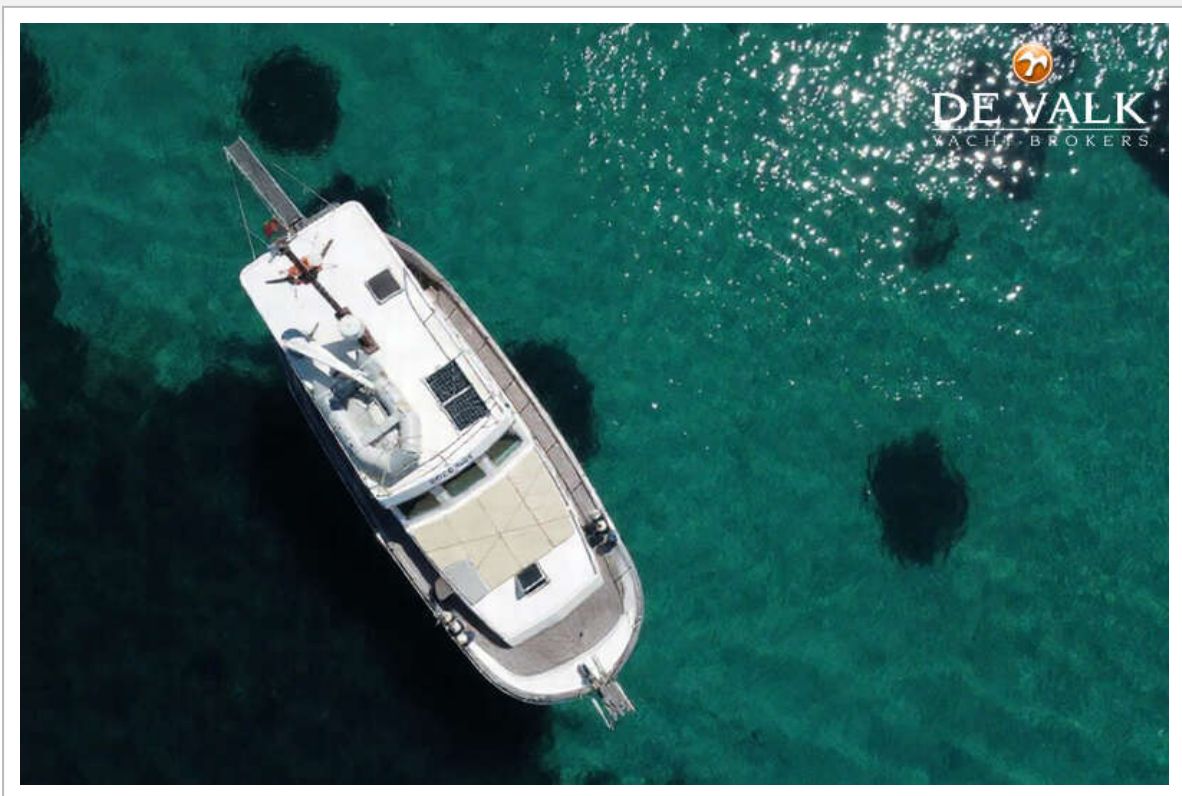


MYABCA 42 TR





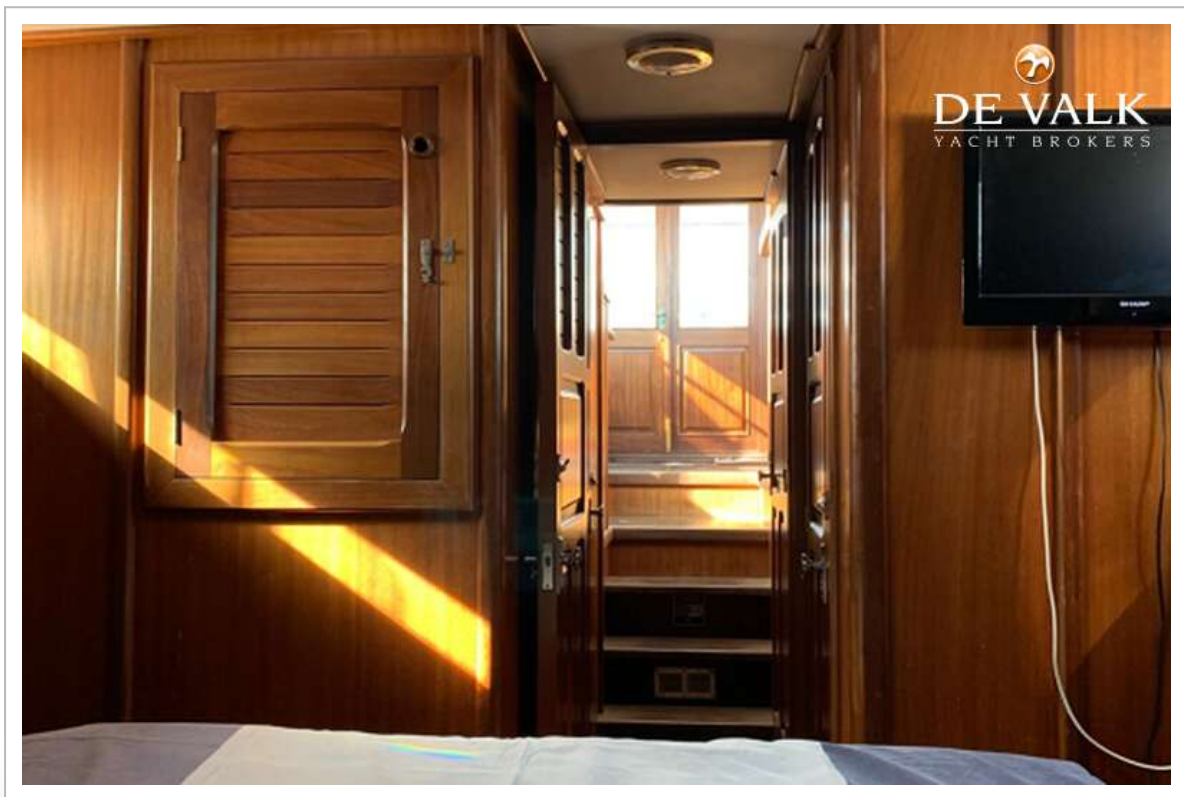
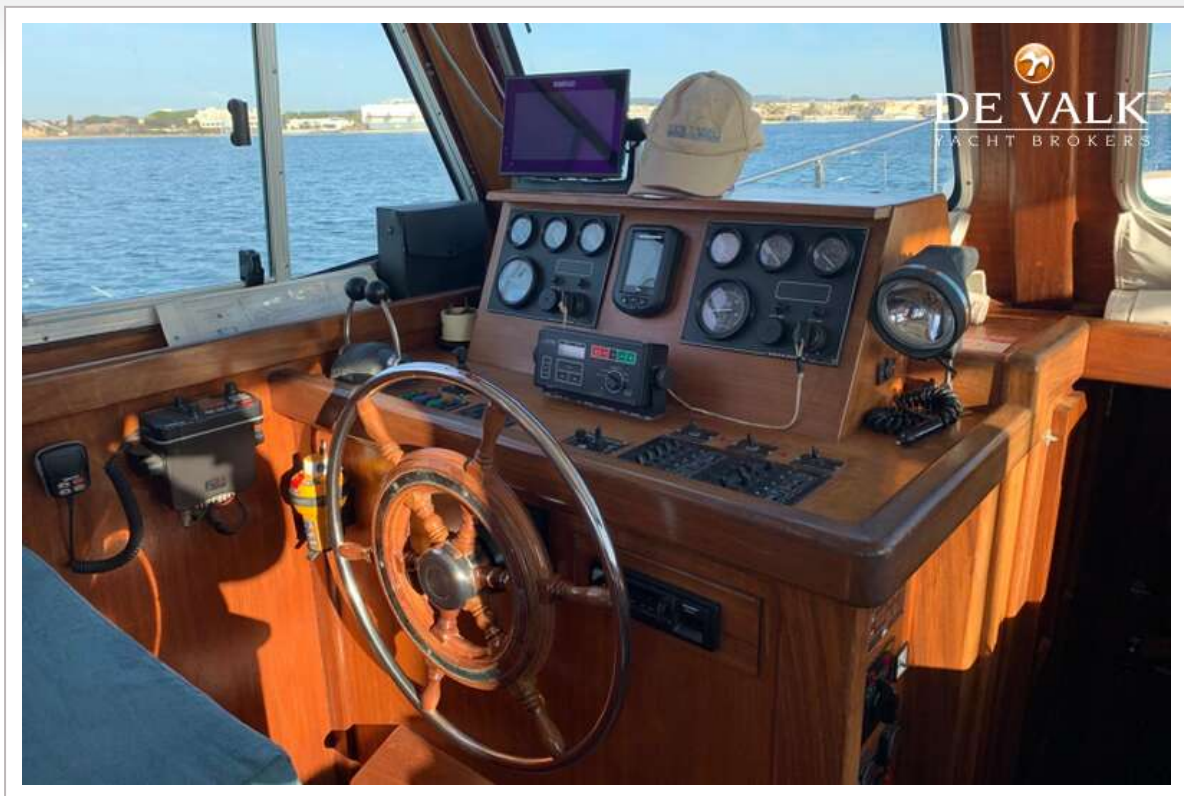
MYABCA 42 TR

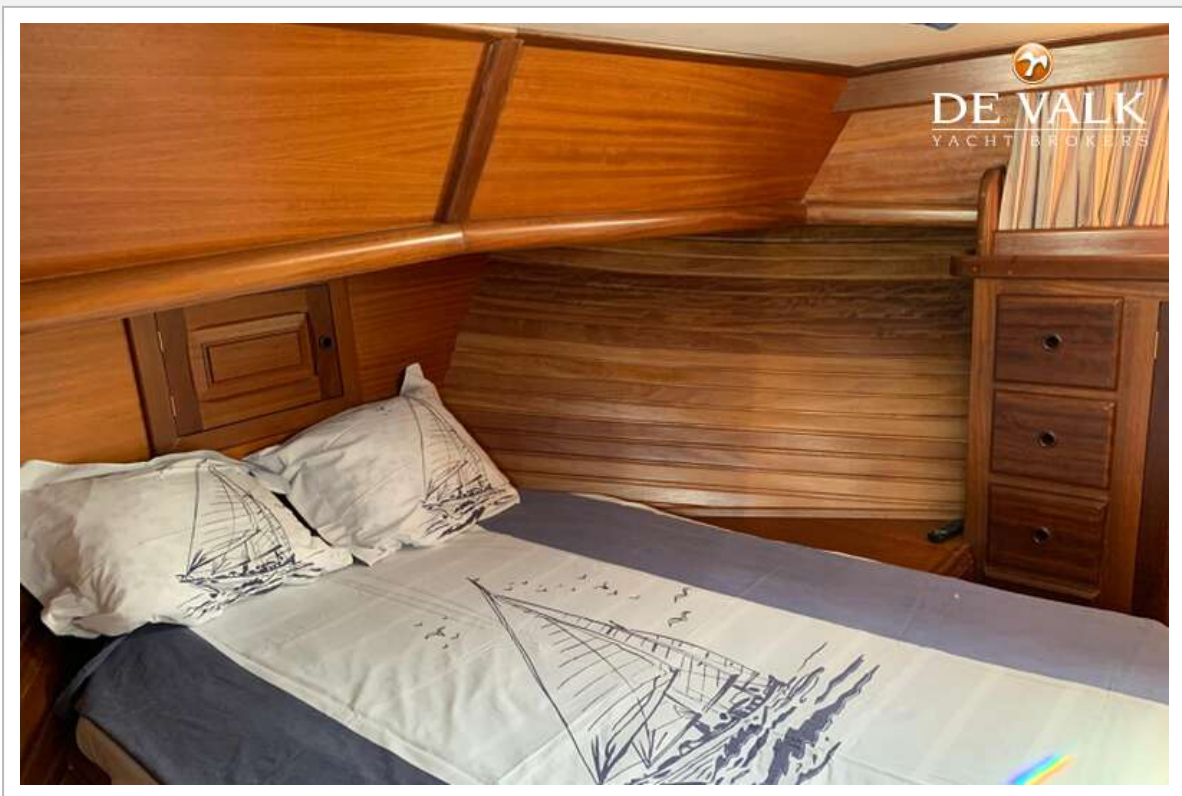


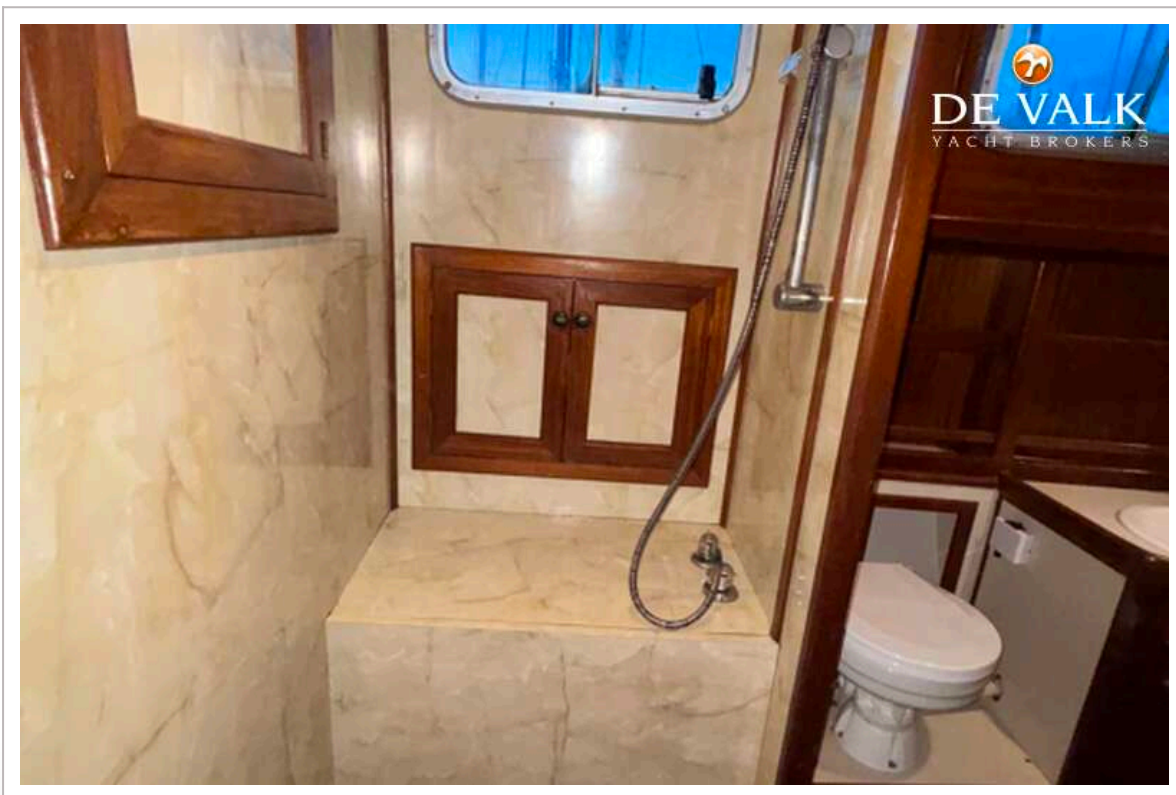
MYABCA 42 TR



MYABCA 42 TR







MYABCA 42 TR

