



DOMINATOR 780S

DOMINATOR 780S

BROKER'S COMMENTS

The Dominator 780S is a 24 m (78 ft) flybridge motor yacht designed for cruising in style with family or friends. The 2011 example strikes a balance between performance, comfort and spacious deck areas, making it a versatile choice for personal use or charter.

Sofia Ilia-Salvanou

SPECIFICATIONS

| | | | |
|---------------------|-------------------------|----------------|----------------------------------|
| Dimensions | 23.95 x 5.80 x 2.10 (m) | Builder | Dominator Yachts |
| Built | 2011 | Cabins | 4 |
| Material | GRP | Berths | 8 |
| Engine(s) | 2 x MAN V12 diesel | Hp/Kw | 2 x 1,550.00 (hp), 1,140.80 (kw) |
| Asking price | € 1.500.000 (VAT Paid) | Lying | elsewhere / Not at sales office |

CONTACT

| | | | |
|---------------------|---|------------------|--------------------|
| Sales office | De Valk Corfu | Telephone | (+30) 266 111 8095 |
| Address | New Port of Corfu, near Gouvia Marina 490 83 Corfu GR | E-mail | corfu@devalk.nl |

DISCLAIMER

These particulars are given in good faith as supplied but cannot be guaranteed.



DOMINATOR 780S

GENERAL

| | |
|------------------------------|-------------------------------------|
| Model | DOMINATOR 780S |
| Type | motor yacht |
| LOA (m) | 23,95 |
| Beam (m) | 5,80 |
| Draft (m) | 2,10 |
| Year built | 2011 |
| Builder | Dominator Yachts |
| Country | Italy |
| Hull material | GRP |
| Hull colour | white |
| Deck material | GRP |
| Deckhatch | yes |
| Portholes | yes |
| Flybridge | Sprawling. REFIT 2019 |
| Flybridge cockpit cover | yes |
| Flybridge suncover | yes |
| Radar arch | yes |
| Fuel tank (litre) | 6.100 |
| Level indicator (fuel tank) | yes |
| Freshwater tank (litre) | 1.500 |
| Level indicator (freshwater) | yes |
| Blackwater tank extraction | yes |
| Level indicator (greywater) | yes |
| Wheel steering | BCS HYDRAULIC PILOT, Manual Backup. |
| Inside helm position | yes |
| Flybridge helm position | yes |
| Emergency tiller | yes |
| Extra info | REFIT 2023 |

ACCOMMODATION



DOMINATOR 780S

| | |
|-------------------------|--|
| Cabins | 4 |
| Berths | 8 |
| Aft deck | yes |
| Air-conditioning | CONNARIA Refit 2023 |
| Navigation center | yes |
| Dining room | yes |
| Sliding door to cockpit | yes |
| Galley | yes |
| Countertop | yes |
| Sink | yes |
| Cooker | yes |
| Oven | MIELE H6860 76L, 3700W Stainless steel |
| Extractor | BOSCH |
| Gas alarm | yes |
| Microwave | yes |
| Fridge | X 1 with Freezer |
| Freezer | X 2 |
| Hot water system | yes |
| Water pressure system | yes |
| Ice maker | yes |
| Coffee maker | yes |
| Crockery | yes |
| Owners cabin | double bed |
| Wardrobe | yes |
| Bathroom | en suite |
| Toilet | en suite |
| Toilet system | electric |
| Wash basin | in the bathroom |
| Shower | en suite |
| Guest cabin 1 | double bed |
| Wardrobe | yes |
| Bathroom | en suite |



DOMINATOR 780S

| | |
|--------------------|-----------------|
| Toilet | en suite |
| Toilet system | electric |
| Wash basin | in the bathroom |
| Shower | en suite |
| Guest cabin 2 | twin single |
| Wardrobe | yes |
| Bathroom | en suite |
| Toilet | en suite |
| Toilet system | electric |
| Wash basin | in the bathroom |
| Shower | en suite |
| Guest cabin 3 | twin single |
| Wardrobe | yes |
| Bathroom | en suite |
| Toilet | en suite |
| Toilet system | electric |
| Wash basin | in the bathroom |
| Shower | en suite |
| Crew cabin(s) | yes |
| Bathroom (crew) | yes |
| Toilet (crew) | yes |
| Toilet system | electric |
| Wash basin | yes |
| Shower (crew) | yes |
| Washing machine | Whirlpool 2022 |
| Ironing facilities | yes |
| Flybridge | yes |

MACHINERY

| | |
|---------------|-----|
| No of engines | 2 |
| Make | MAN |



DOMINATOR 780S

| | |
|---------------------------|------------------------------|
| Type | V12 |
| HP | 1550 |
| kW | 1140.80 |
| Fuel | diesel |
| Maximum speed (kn) | 30 |
| Cruising speed (kn) | 22 |
| Consumption (l/hr) | 380 |
| Shaft seal | Replaced 2023 |
| Bowthruster | Refit 2023 |
| Sternthruster | Refit 2023 |
| Thrust bearing | 2023 |
| Propeller type | fixed X 2, 2023 Balancing |
| Propeller shaft material | Shaft Bearings replaced 2023 |
| Electric bilge pump | yes |
| Generator | NEW ONAN |
| Running hours generator | 483 |
| Generator 2 | VETUS |
| Running hours generator 2 | 2.100 |
| Batteries | NEW |
| Start battery | NEW |
| Service battery | X 12 |
| Generator battery | NEW |
| Bowthruster battery | NEW |
| Sternthruster battery | NEW |
| Battery monitor | yes |
| Battery charger | Mastervolt |
| Watermaker | 180 Lt/h |

NAVIGATION

| | |
|---------------|----------------|
| Compass | 2023 RAYMARINE |
| Depth sounder | 2023 RAYMARINE |



DOMINATOR 780S

| | |
|------------------------|------------------------------------|
| Windset | RAYMARINE |
| VHF | 2023 RAYMARINE RAY 90 |
| VHF handheld | RAYMARINE WATERPROOF |
| Autopilot | RAYMARINE EVOLUTION SOLENOID EV300 |
| Rudder angle indicator | yes |
| Radar | RAYMARINE |
| GPS | RAYMARINE |
| Plotter/GPS | 2023 X 3 RAYMARINE: AXIOM XL 19 |
| Wifi antenna | yes |
| Navigation lights | yes |

EQUIPMENT

| | |
|------------------|--|
| Cockpit cover | 2022 |
| Bimini | Hydraulic on Flybridge & a front Sundeck BIMINI |
| Cockpit table | yes |
| Bathing platform | 2023 Refit |
| Boarding ladder | SIDE Adjustable INOX-Teak with railing |
| Gangway | BESENZONI Refit 2023 with ladder extension INOX Teak & railing |
| Anchor | yes |
| Anchor chain | yes |
| Windlass | yes |
| Dinghy | ZAR ZF3 |
| Sea railing | yes |
| Life raft | yes |
| Lifejackets | yes |
| Lifebuoy | yes |
| Fenders | yes |
| Mooring lines | yes |
| Spare parts | yes |
| Tools | yes |



DOMINATOR 780S

| | |
|-----------------------------|-------------------|
| TV | yes |
| Satellite | yes |
| Surround Sound System | BOSE |
| Clock - barometer | yes |
| Fire extinguisher | yes |
| Extinguisher in engine room | yes |
| Extra info | UNDERWATER LIGHTS |



DOMINATOR 780S



DOMINATOR 780S



DOMINATOR 780S



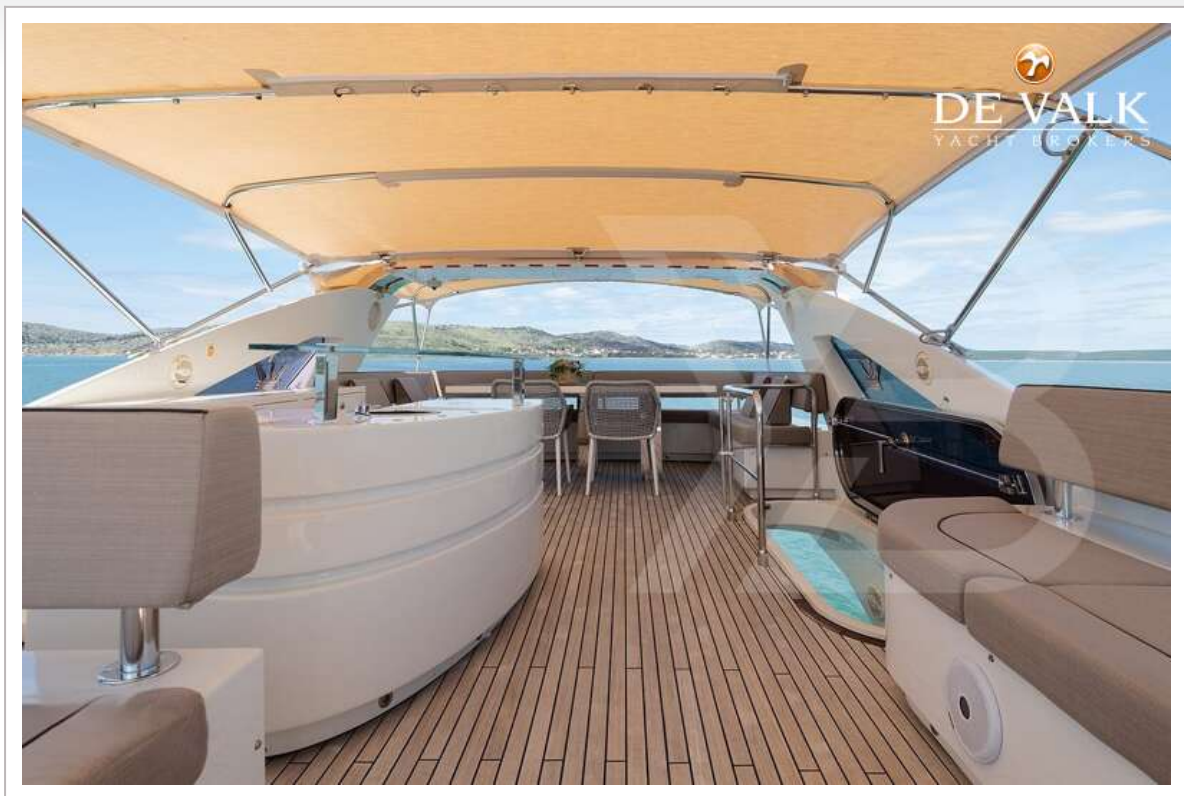
DOMINATOR 780S



DOMINATOR 780S



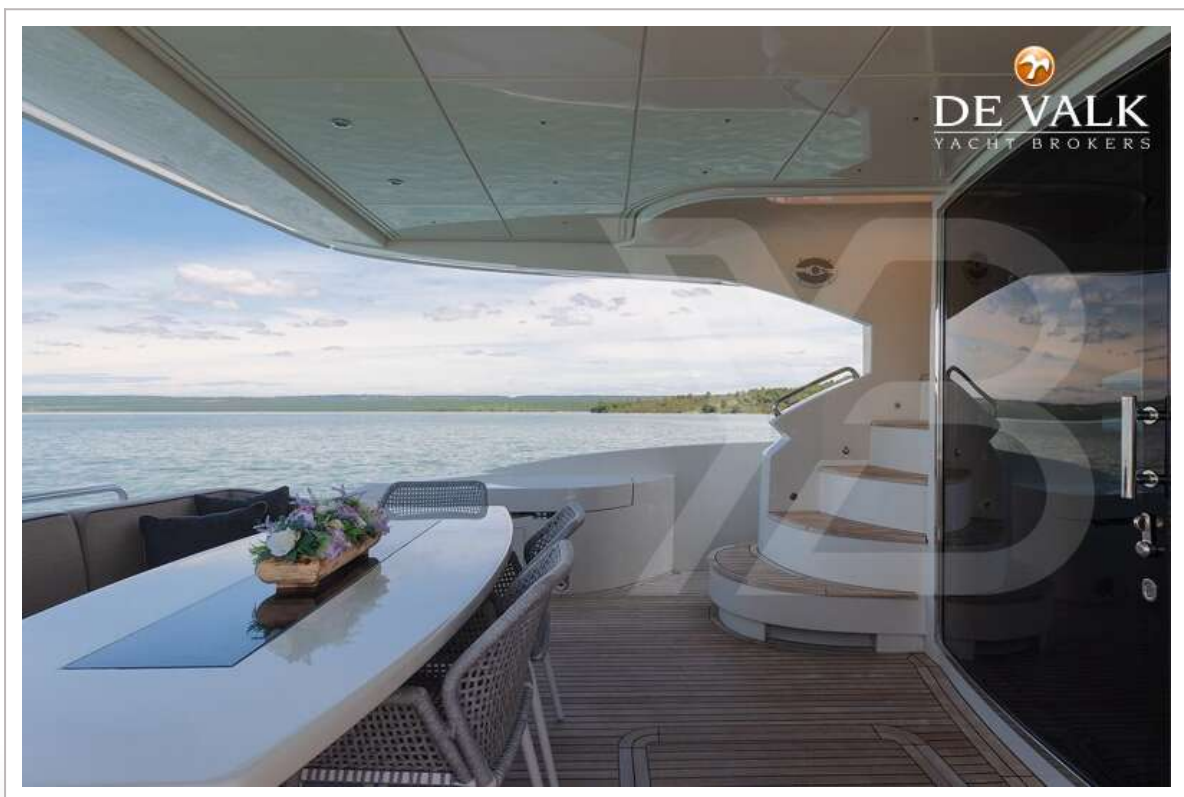
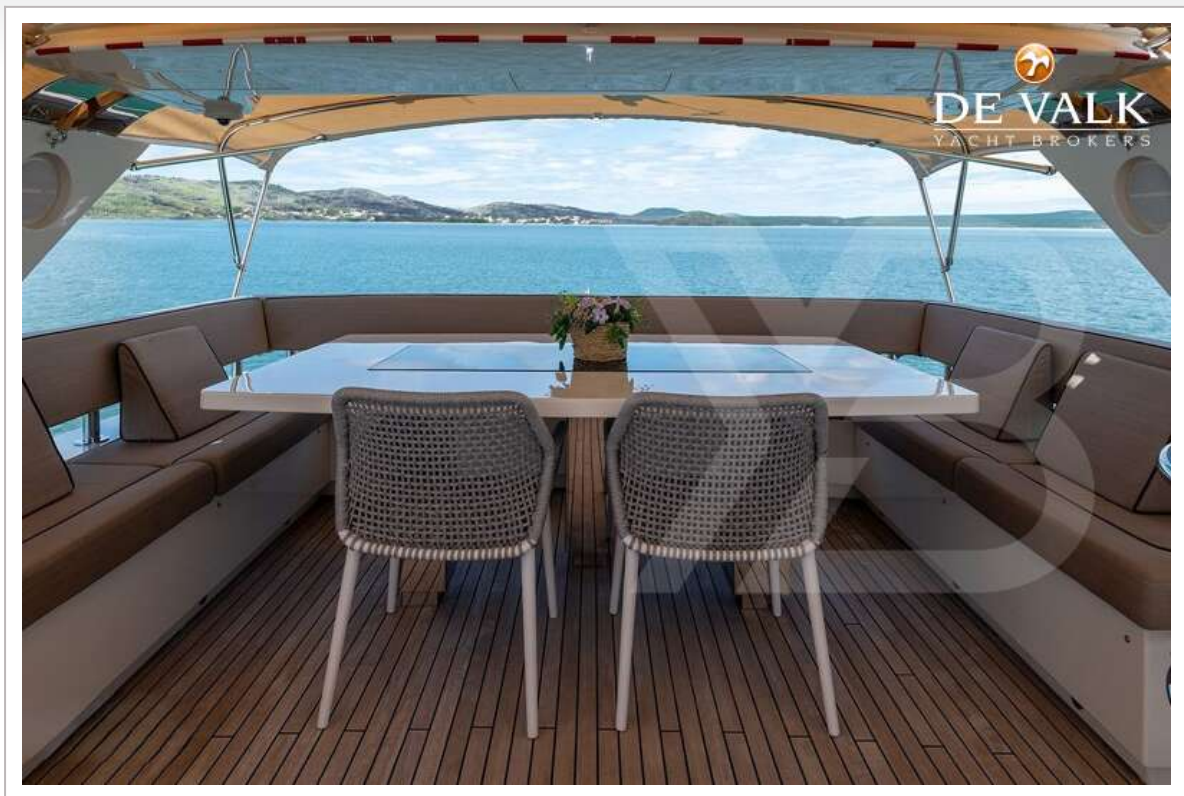
DOMINATOR 780S



DOMINATOR 780S



DOMINATOR 780S



DOMINATOR 780S



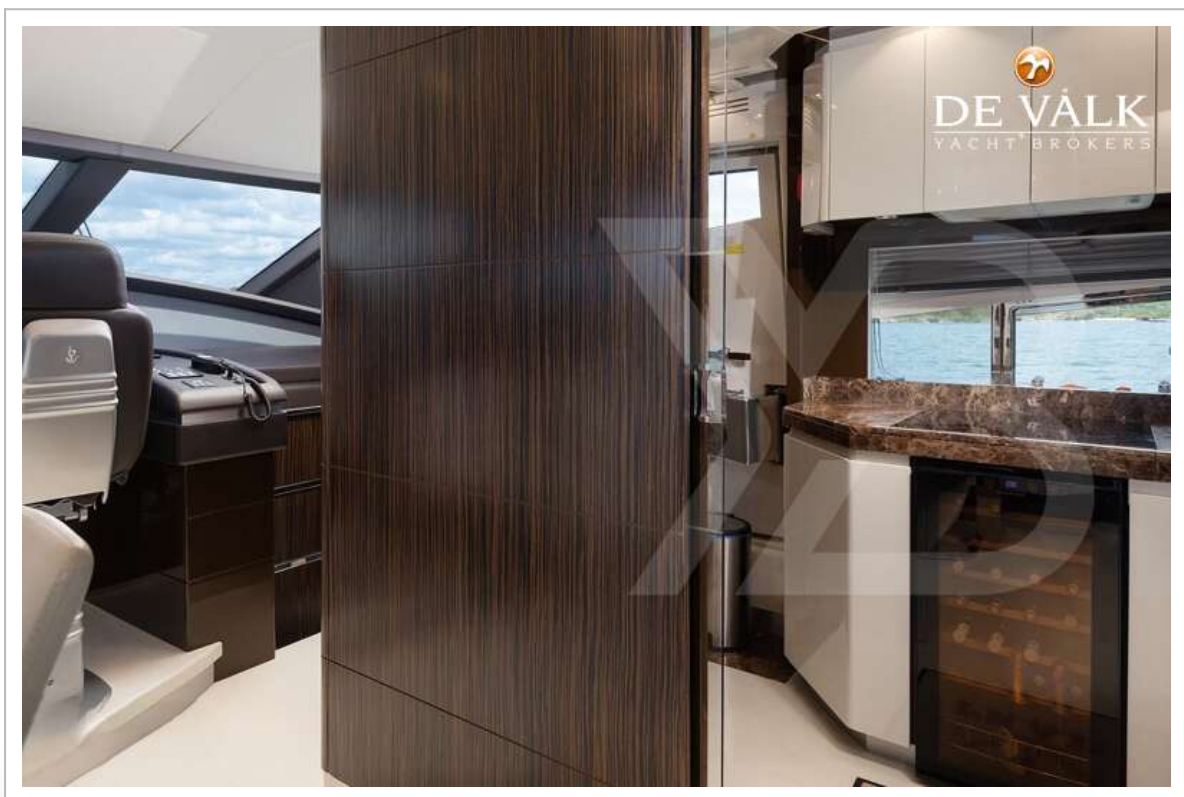
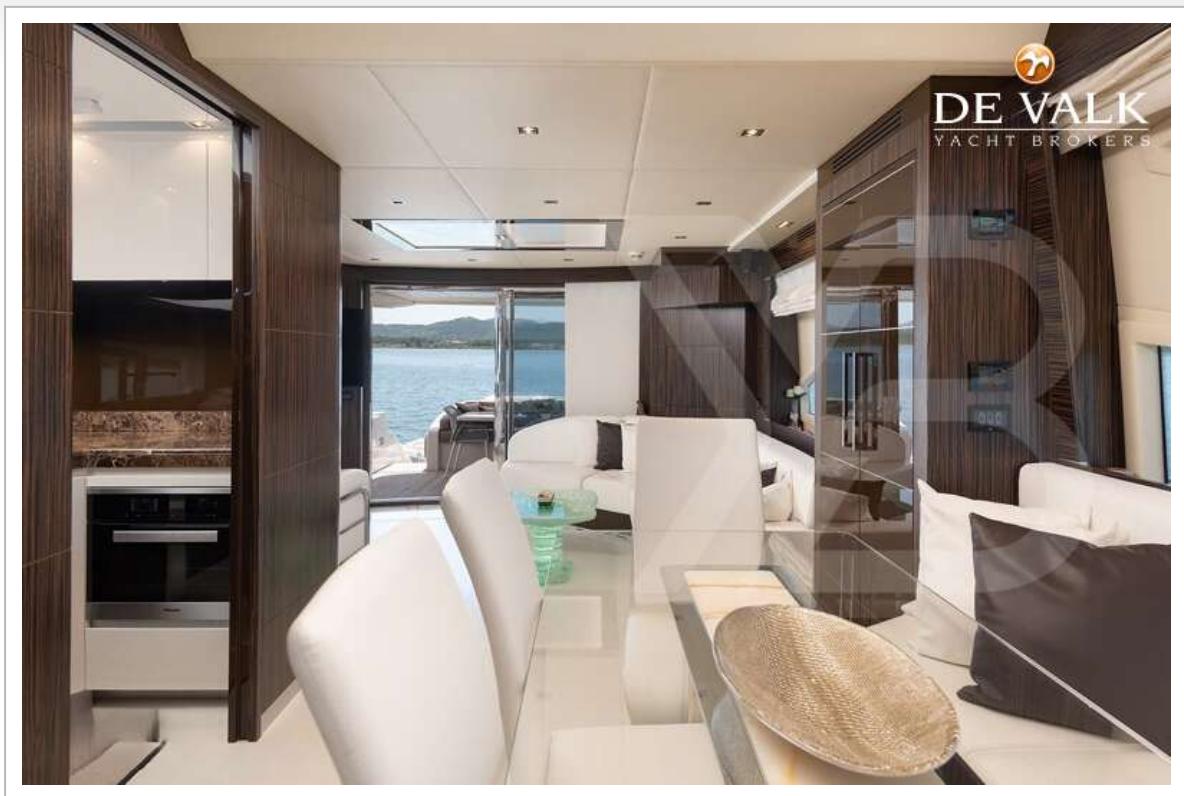
DOMINATOR 780S



DOMINATOR 780S



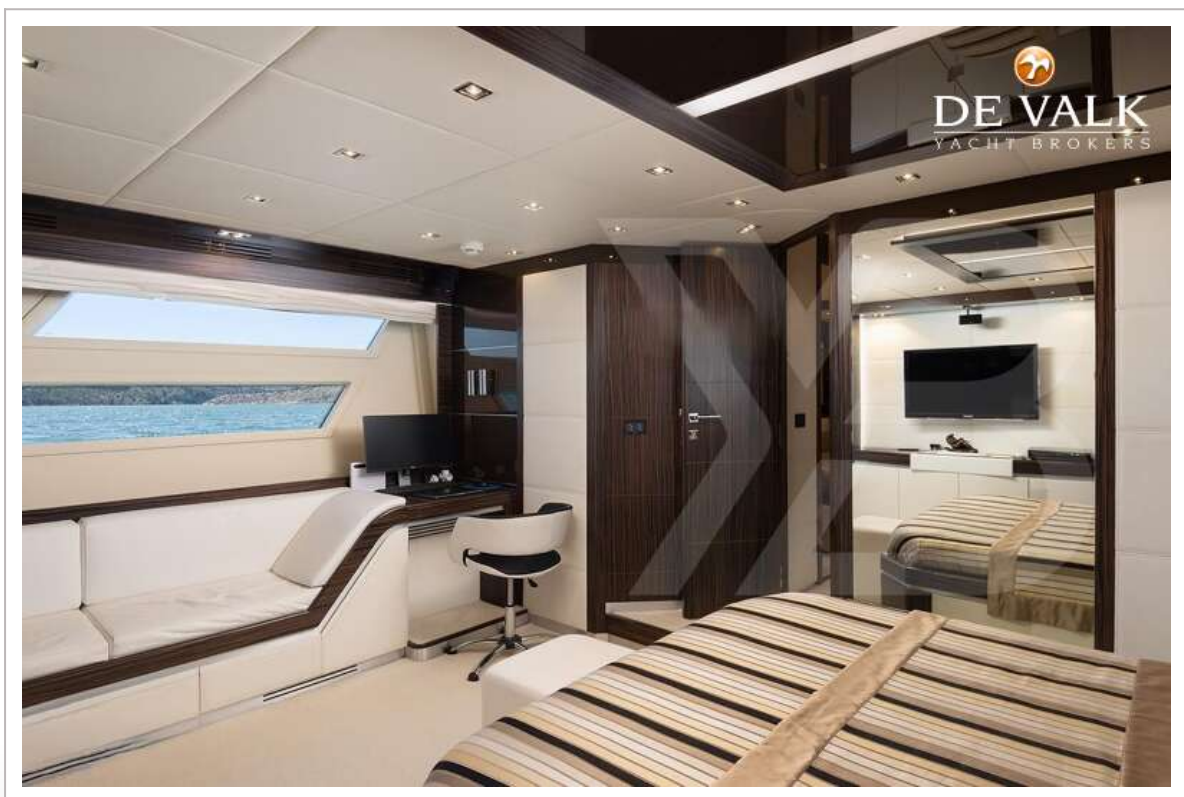
DOMINATOR 780S



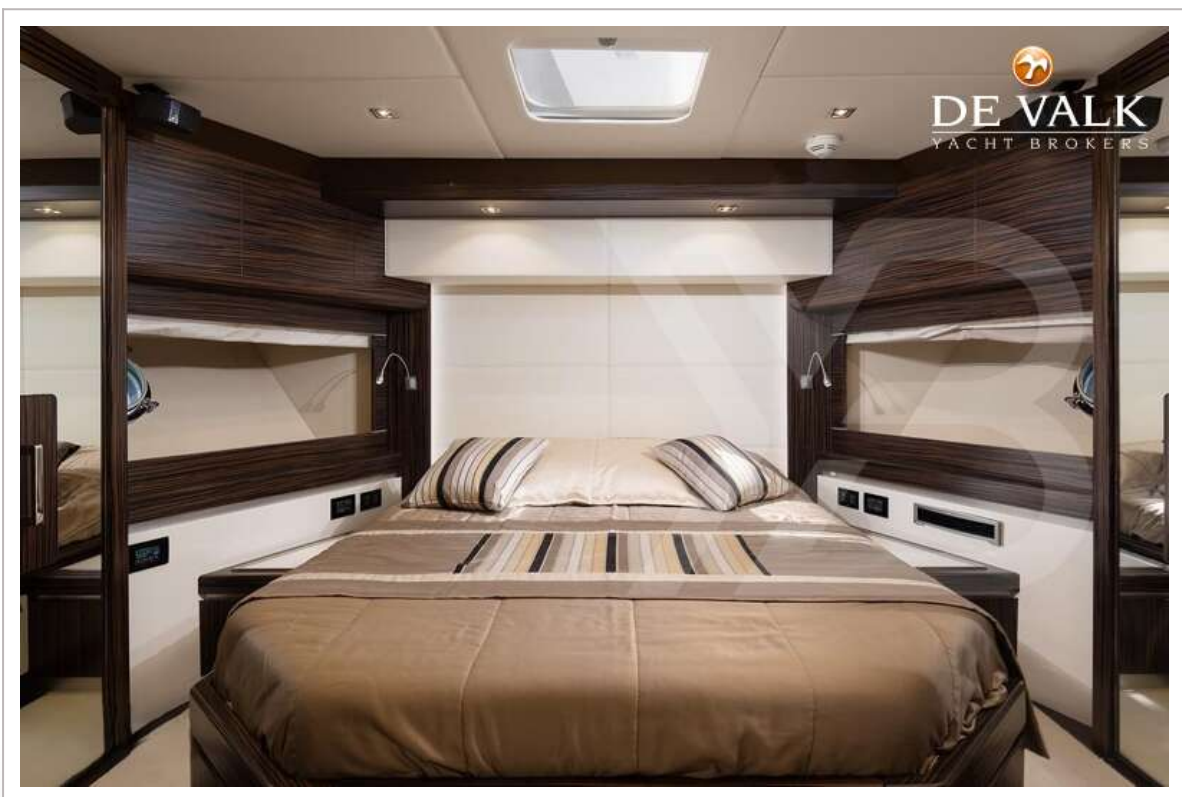
DOMINATOR 780S



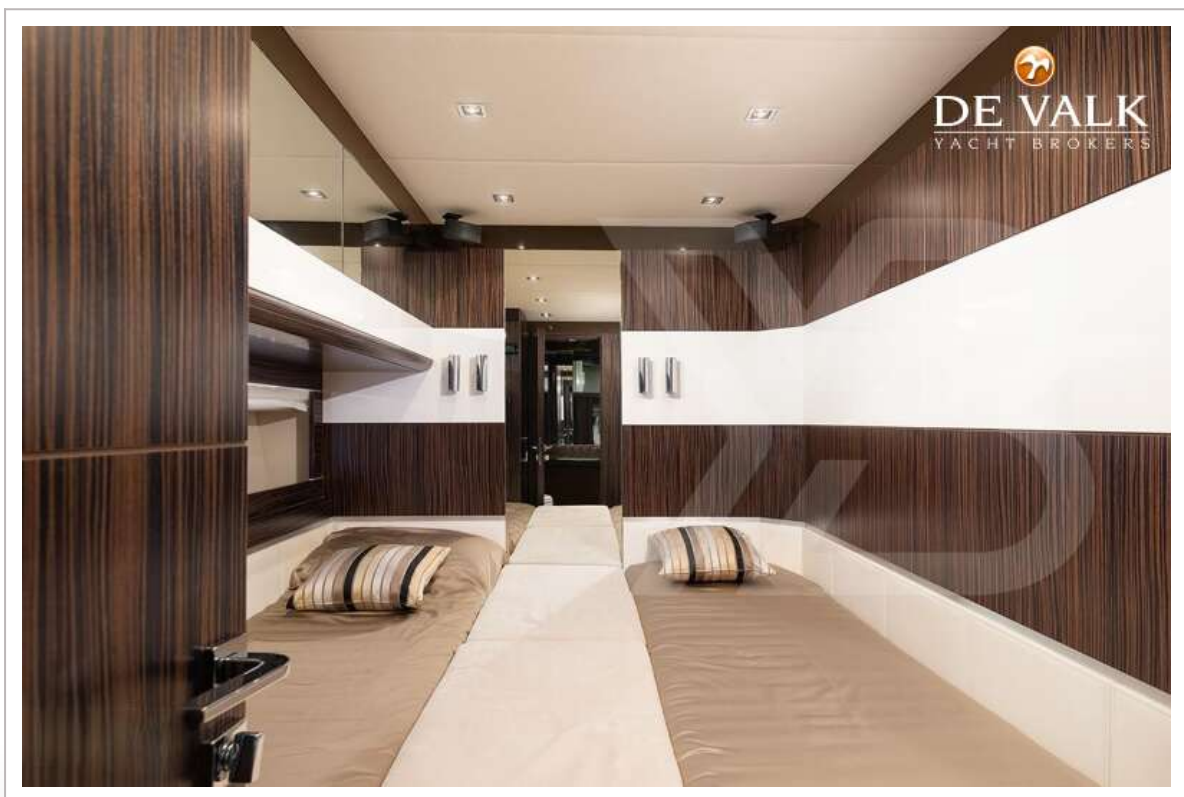
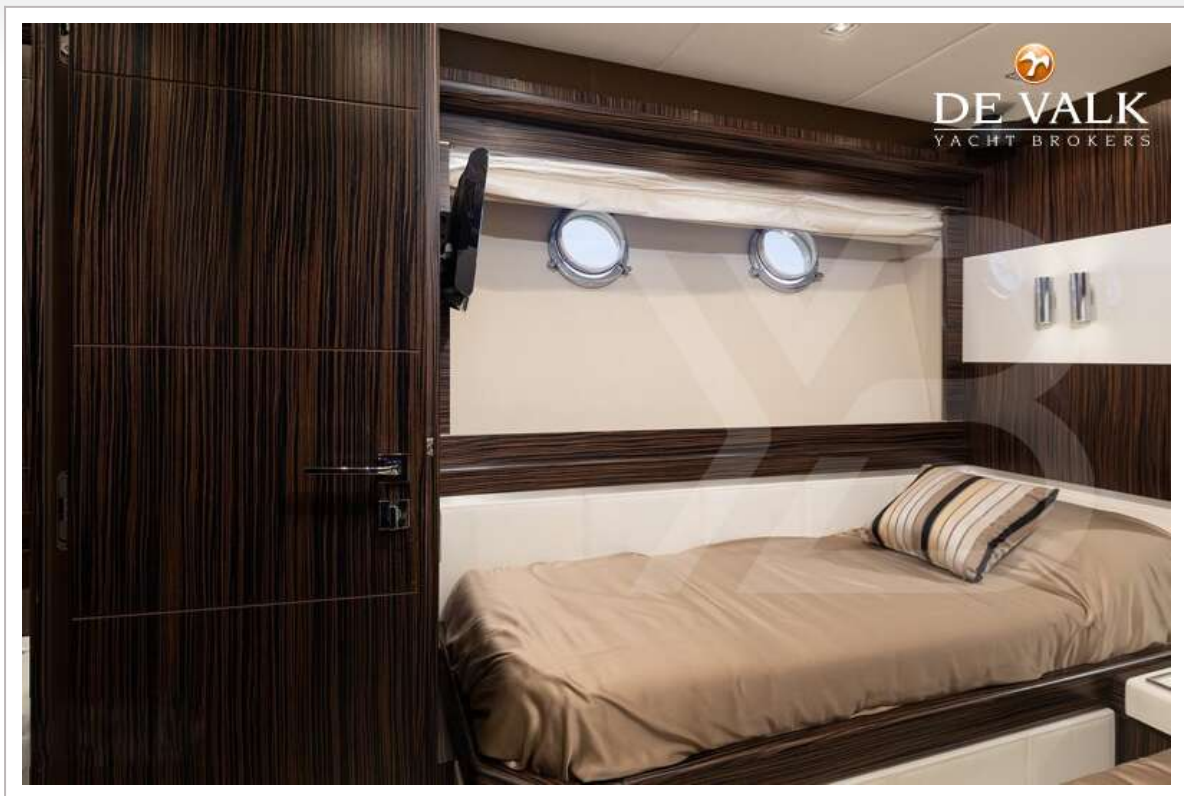
DOMINATOR 780S



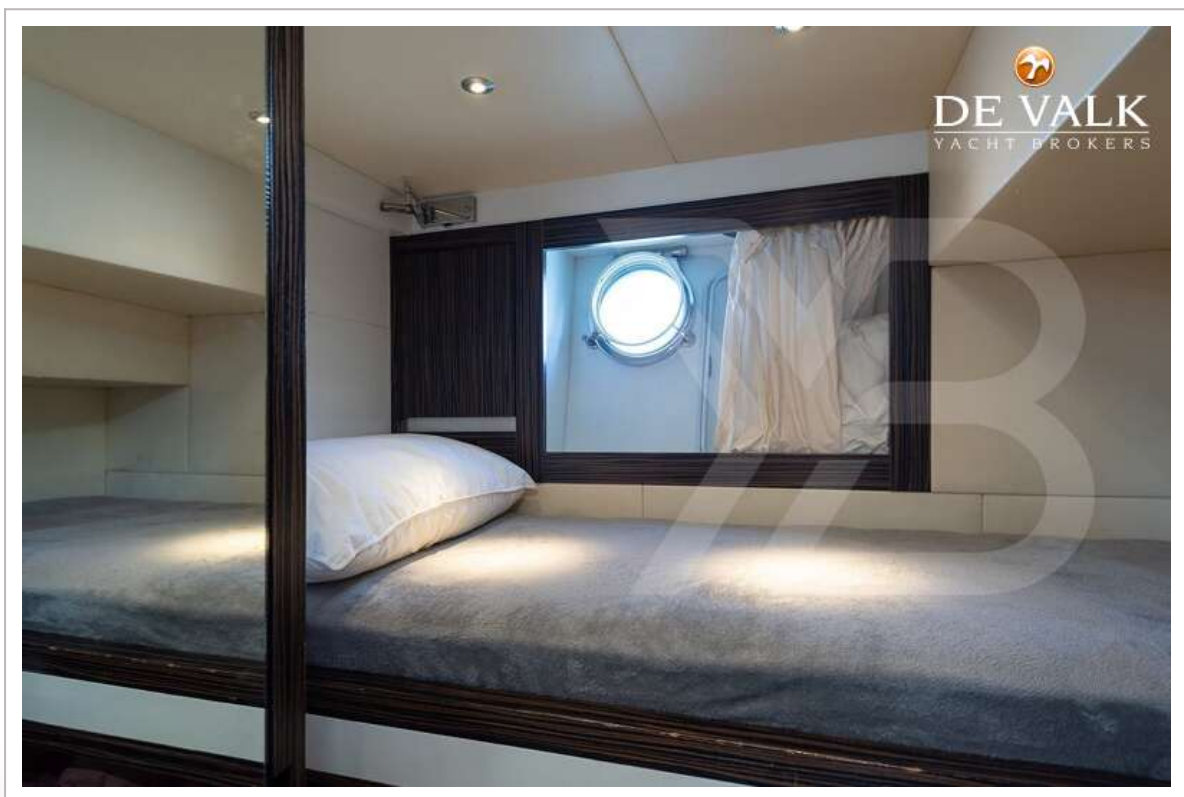
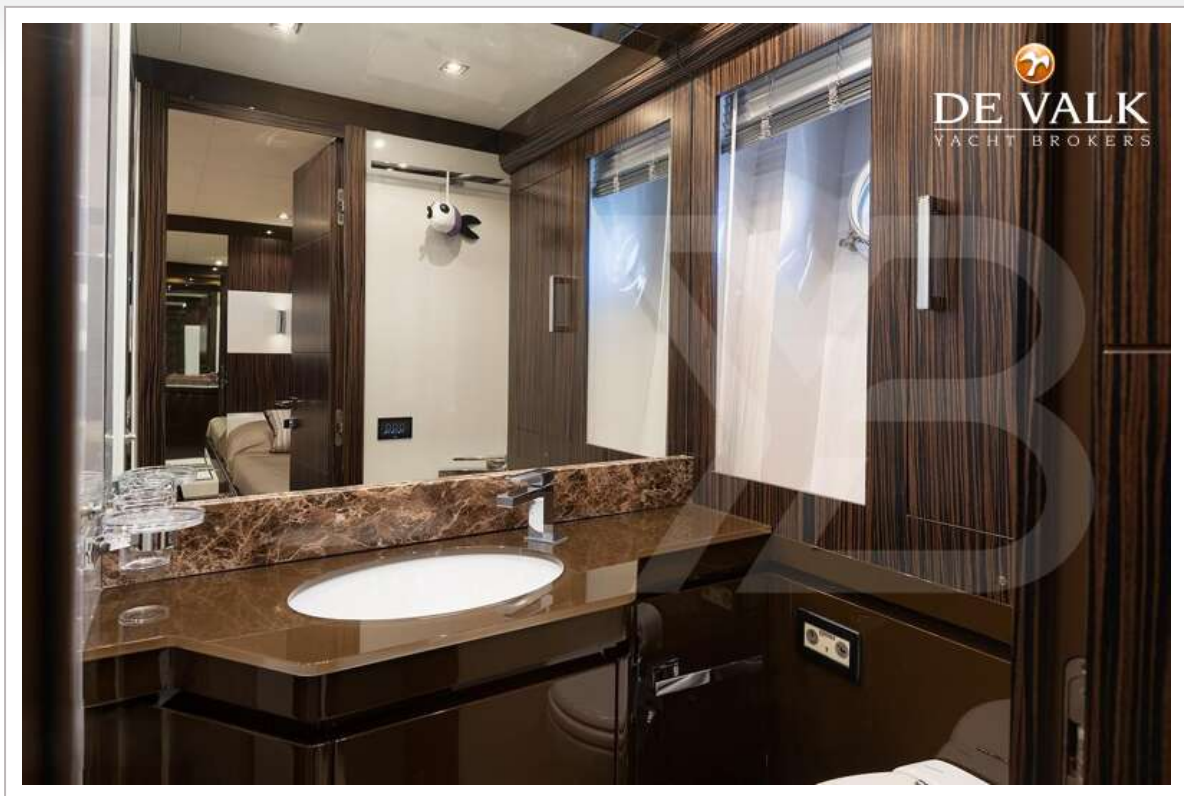
DOMINATOR 780S



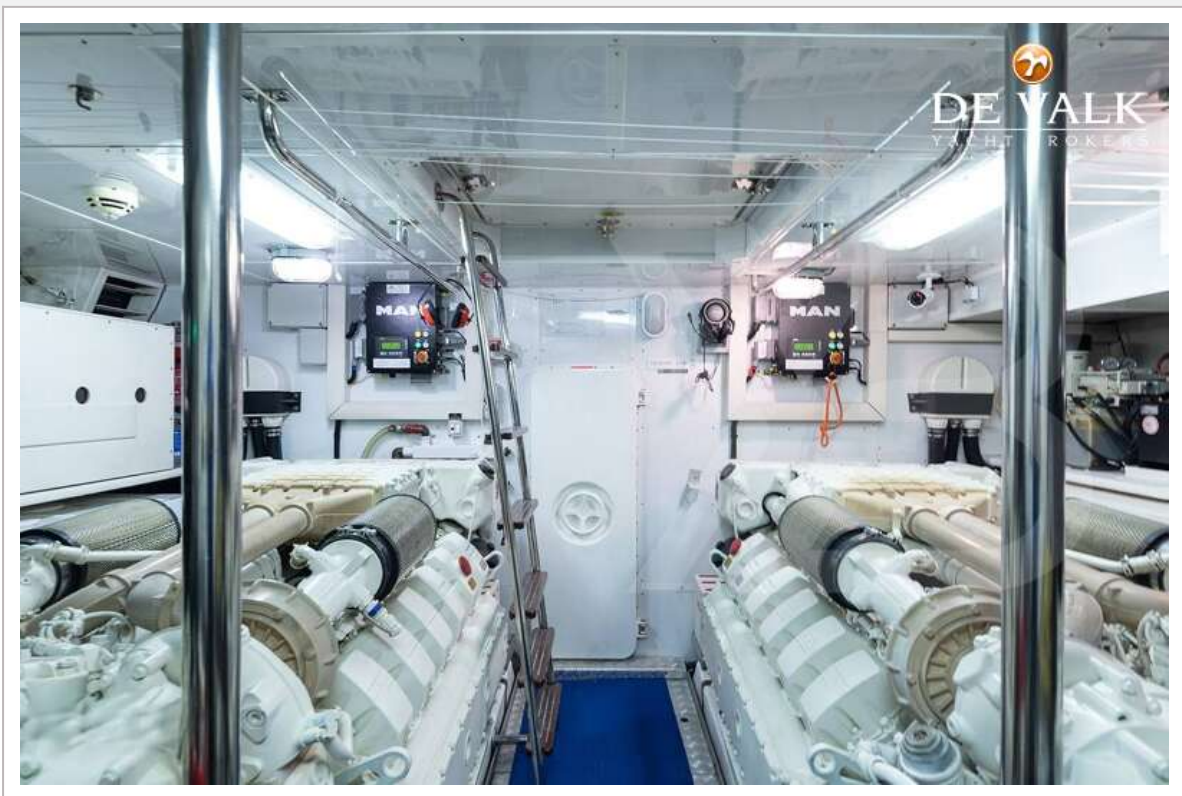
DOMINATOR 780S



DOMINATOR 780S



DOMINATOR 780S



DOMINATOR 780S

