



DE VALK
YACHT BROKERS



JEANNEAU PRESTIGE 50.



DE VALK
YACHT BROKERS

JEANNEAU PRESTIGE 50.

BROKER'S COMMENTS

The 2016 Jeanneau Prestige 500 is widely considered a very capable flybridge cruiser that offers an excellent balance of space, comfort and performance in the ~50 ft category. It's particularly strong for family cruising or social outings, with generous living areas and intuitive systems that make handling easier than many boats of similar size.

Sofia Iliia-Salvanou

SPECIFICATIONS

Dimensions	14.92 x 4.47 x 1.12 (m)	Builder	JEANNEAU
Built	2016	Cabins	3
Material	GRP	Berths	6
Engine(s)	2 x VOLVO PENTA IPS 600 D6 diesel	Hp/Kw	2 x 435.00 (hp), 320.16 (kw)
Asking price	€ 580.000 (VAT Paid)	Lying	elsewhere / Not at sales office

CONTACT

Sales office	De Valk Corfu	Telephone	(+30) 6948681503
Address	New Port of Corfu, near Gouvia Marina 490 83 Corfu GR	E-mail	corfu@devalk.nl

DISCLAIMER

These particulars are given in good faith as supplied but cannot be guaranteed.



JEANNEAU PRESTIGE 50.

GENERAL

Model	JEANNEAU PRESTIGE 50.
Type	motor yacht
LOA (m)	14,92
Beam (m)	4,47
Draft (m)	1,12
Air draft (m)	5,23
Headroom (m)	2,10
Year built	2016
Builder	JEANNEAU
Country	France
Designer	Garroni
Displacement (t)	19,8
CE norm	B
Hull material	GRP
Hull colour	white
Deck material	GRP
Deckhatch	yes
Portholes	yes
Flybridge	yes
Radar arch	yes
Fuel tank (litre)	2 X 650
Level indicator (fuel tank)	yes
Fuel daytank (litre)	yes
Level indicator (daytank)	yes
Freshwater tank (litre)	2 X 318
Level indicator (freshwater)	yes
Blackwater tank (litre)	120
Level indicator (blackwater)	yes
Wheel steering	JOY STICK
Inside helm position	yes



JEANNEAU PRESTIGE 50.

Flybridge helm position

JOY STICK STEERING

ACCOMMODATION

Cabins	3
Berths	6
Crew cabin	yes
Floor	yes
Saloon	yes
Air-conditioning	53.000 BTU
Navigation center	yes
Chart table	yes
Dining room	Hydraulic Dining Table
Sliding door to cockpit	yes
Galley	yes
Countertop	yes
Sink	yes
Cooker	Induction cook top
Oven	yes
Extractor	yes
Gas alarm	yes
Microwave	yes
Fridge	yes
Freezer	yes
Wine cooler	yes
Hot water system	60 Lt Boiler
Water pressure system	yes
Dishwasher	yes
Coffee maker	yes
Crockery	yes
Owners cabin	double bed
Wardrobe	yes



JEANNEAU PRESTIGE 50.

Bathroom	en suite
Toilet	en suite
Toilet system	electric
Wash basin	in the bathroom
Shower	en suite
Guest cabin 1	twin single
Wardrobe	yes
Bathroom	shared
Toilet	shared
Toilet system	electric
Wash basin	in the bathroom
Shower	shared
Guest cabin 2	twin single
Wardrobe	yes
Bathroom	shared
Toilet	shared
Toilet system	electric
Wash basin	in the bathroom
Shower	shared
Crew cabin(s)	yes
Bathroom (crew)	yes
Toilet (crew)	yes
Washing machine	yes
Flybridge	yes

MACHINERY

No of engines	2
Make	VOLVO PENTA
Type	IPS 600 D6
HP	435
kW	320.16



JEANNEAU PRESTIGE 50.

Fuel	diesel
Year installed	2016
Maximum speed (kn)	29
Cruising speed (kn)	24
Consumption (l/hr)	130
Range (nm)	241
Drive	Zeus Pod
Bowthruster	yes
Propeller type	fixed
Electric bilge pump	yes
Bilge alarm	yes
Electrical installation	yes
Generator	ONAN 11Kw
Batteries	yes
Start battery	yes
Service battery	yes
Battery monitor	yes
Battery charger	yes
Inverter	yes
Shorepower	yes
Watermaker	ONAN

NAVIGATION

Compass	Electric
Depth sounder	yes
VHF	yes
Autopilot	yes
Radar	RAYMARINE

EQUIPMENT

Bathing platform	Hydraulic 300 Kg
------------------	------------------

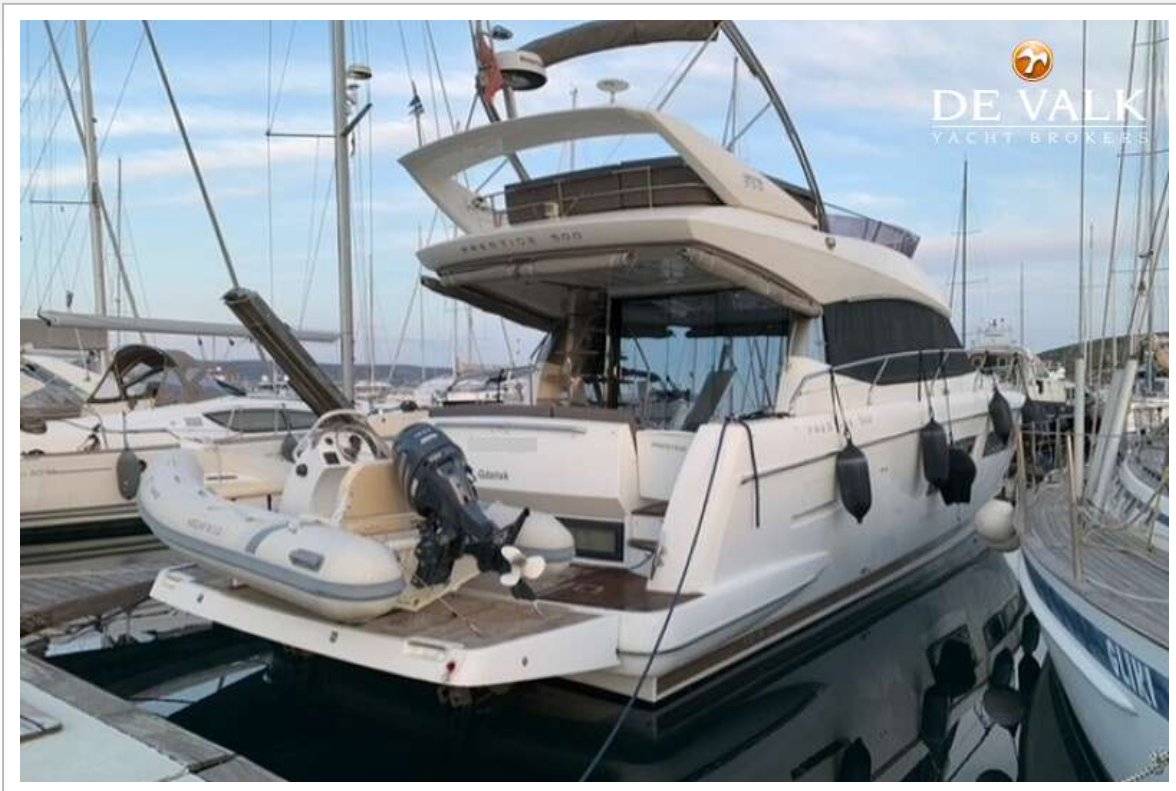


JEANNEAU PRESTIGE 50.

Gangway	2,70 m & 250 Kg
Anchor	yes
Anchor chain	yes
Windlass	2000 W
Dinghy	HIGHFEILD
Outboard	YAMAHA 40 Hp
Lifejackets	yes
Lifebuoy	yes
Fenders	yes
Mooring lines	yes
Spare parts	yes
Tools	yes
TV	Hydraulic TV Stand
Clock - barometer	yes
Fire extinguisher	yes
Extinguisher in engine room	yes
Extra info	SAFE BOX
Extra info	BBQ



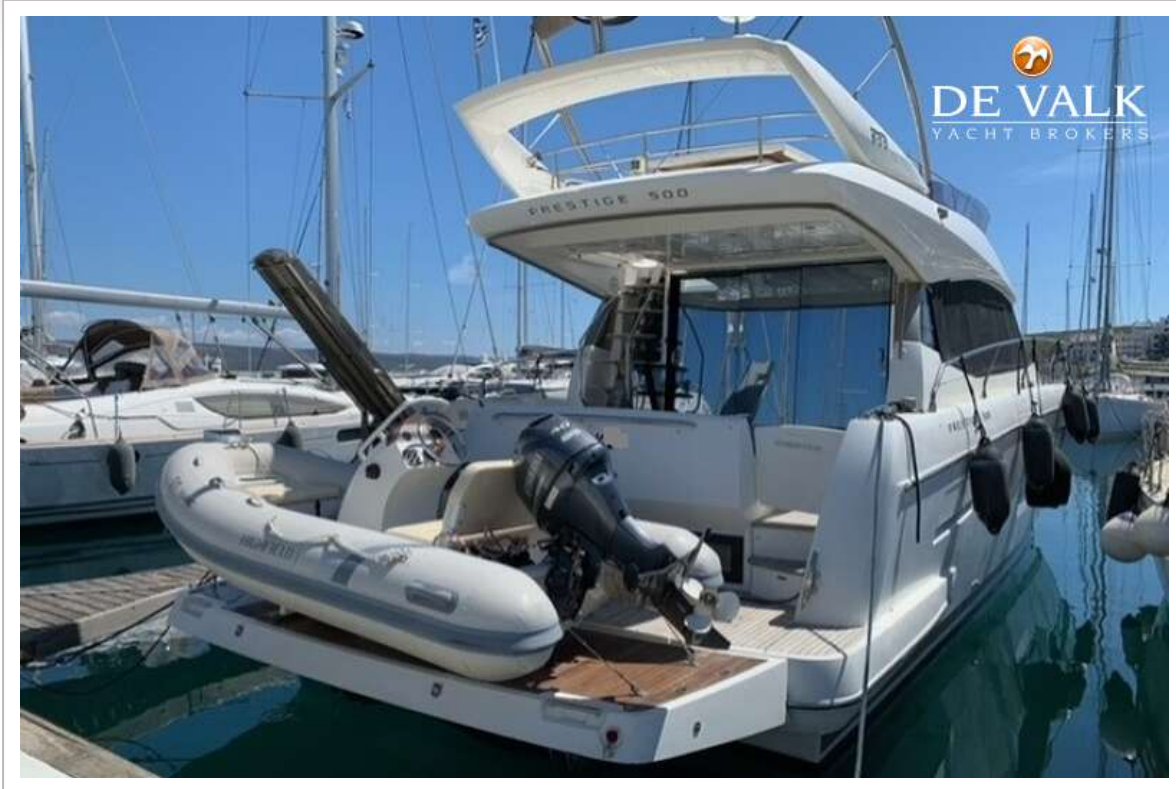
JEANNEAU PRESTIGE 50.



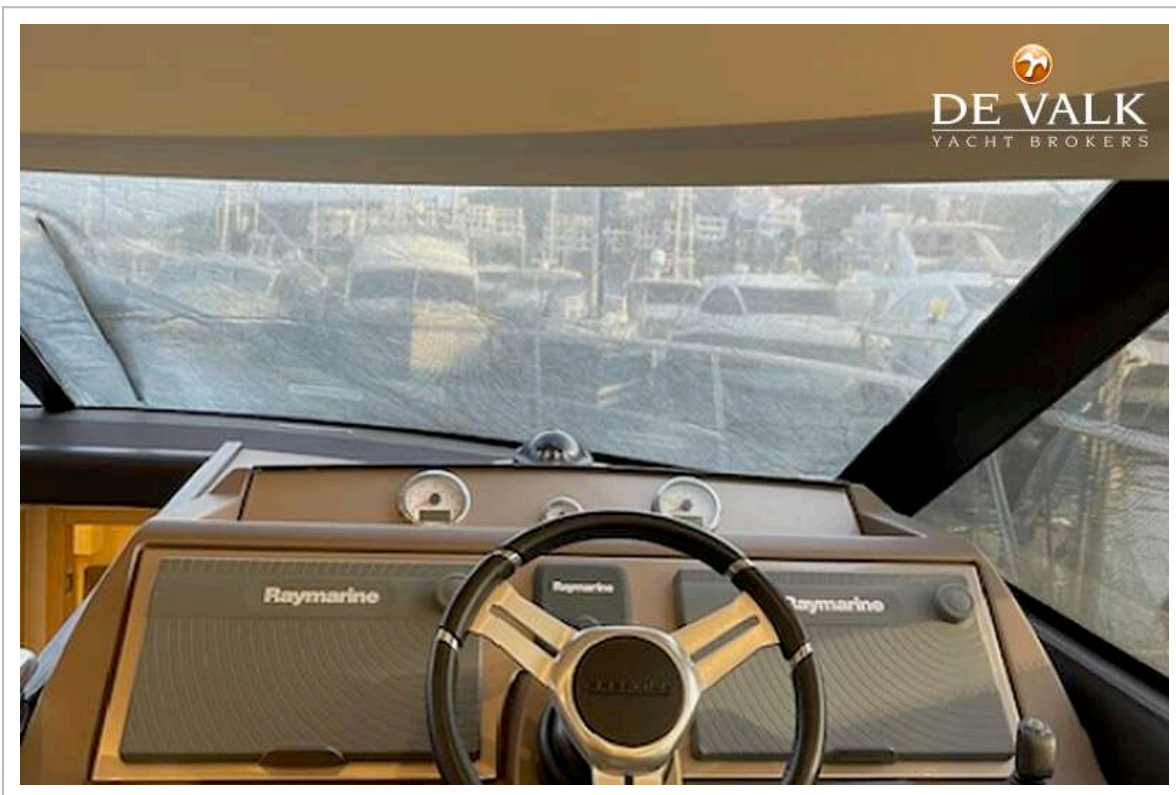
JEANNEAU PRESTIGE 50.



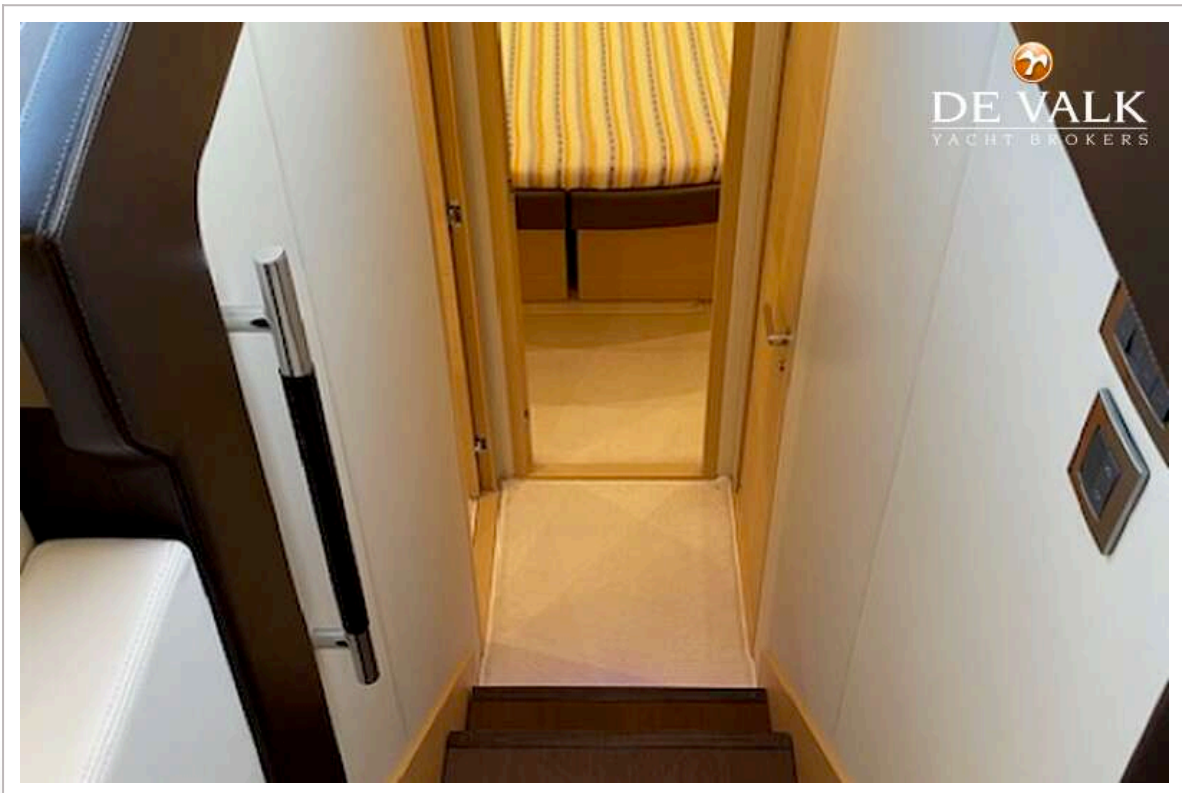
JEANNEAU PRESTIGE 50.



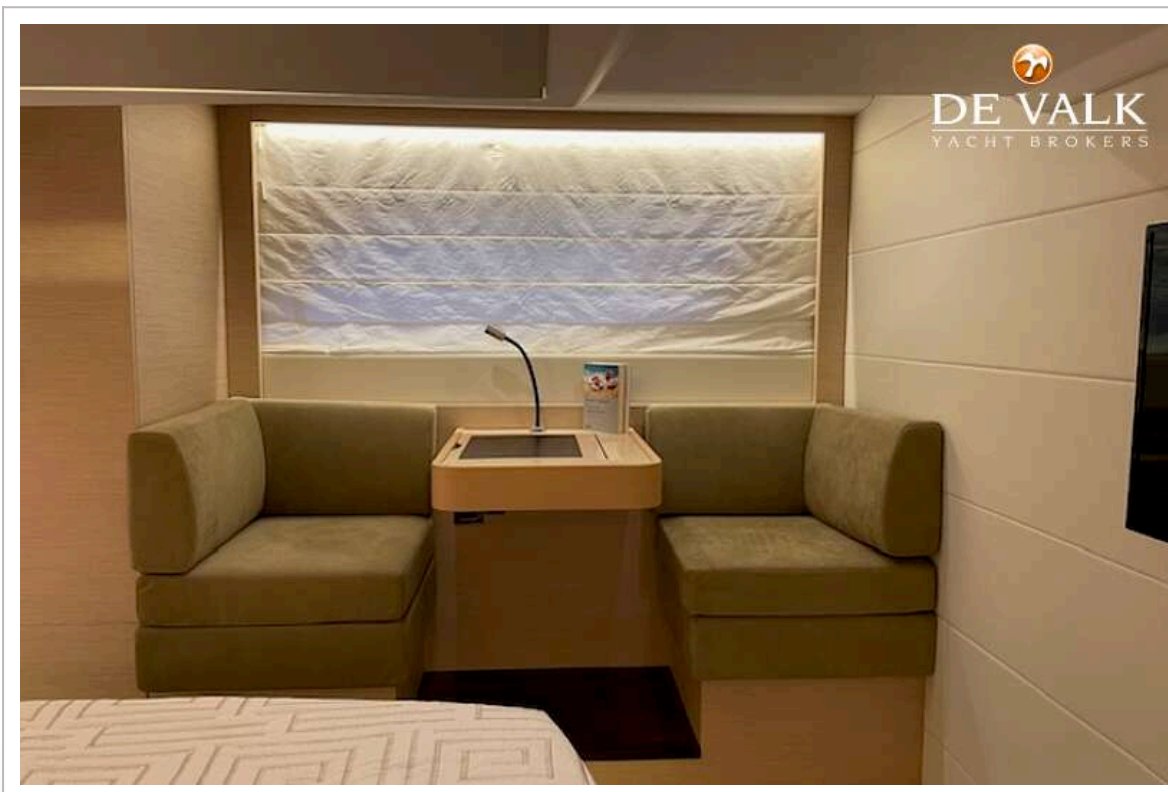
JEANNEAU PRESTIGE 50.



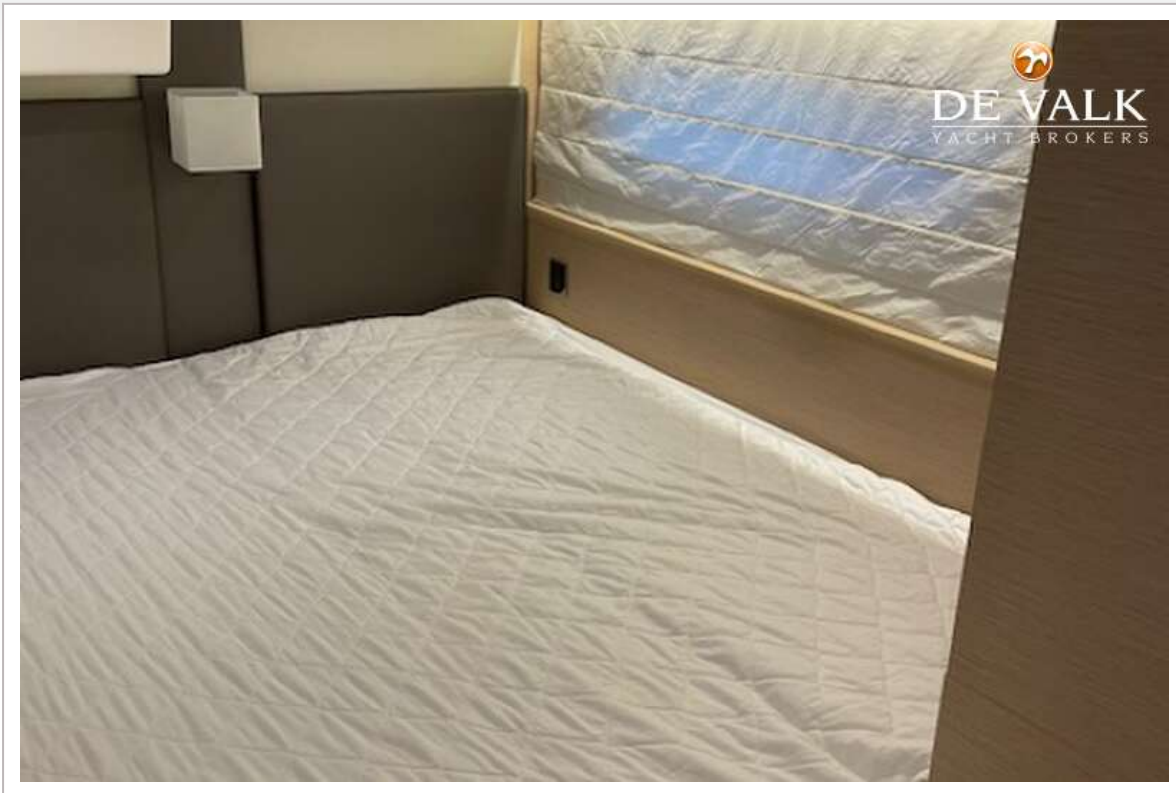
JEANNEAU PRESTIGE 50.



JEANNEAU PRESTIGE 50.



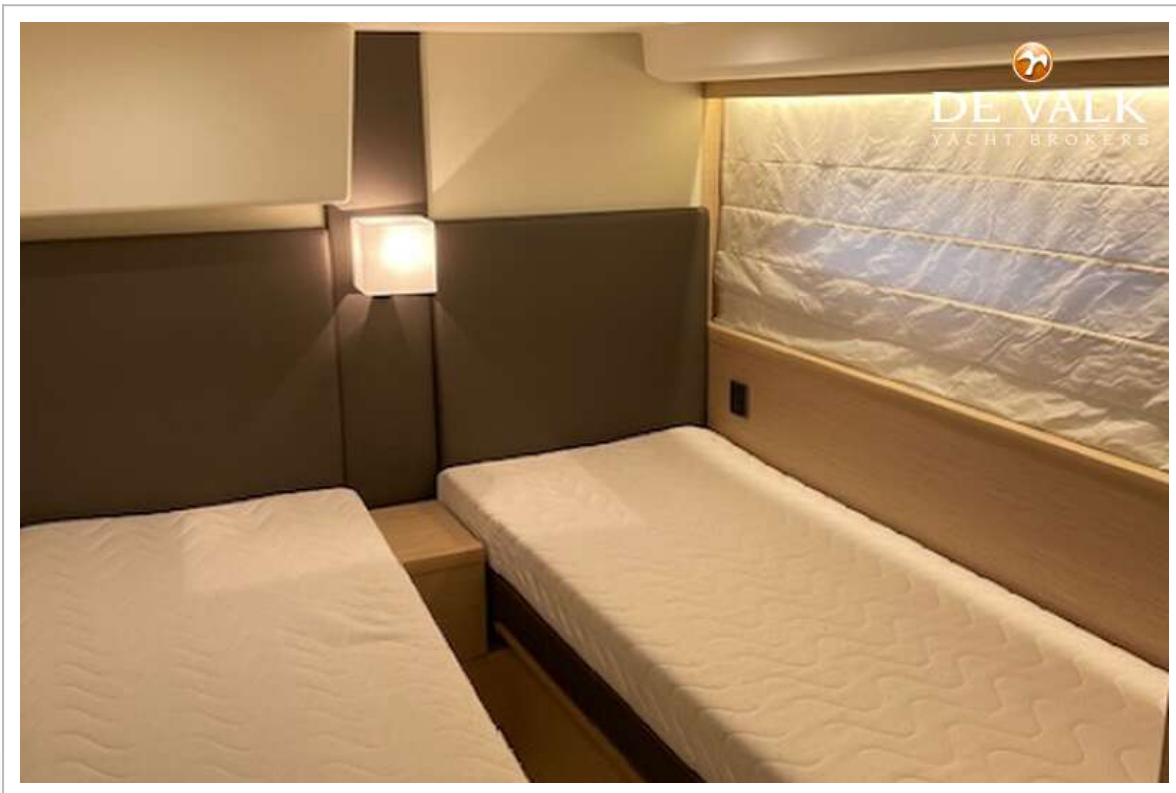
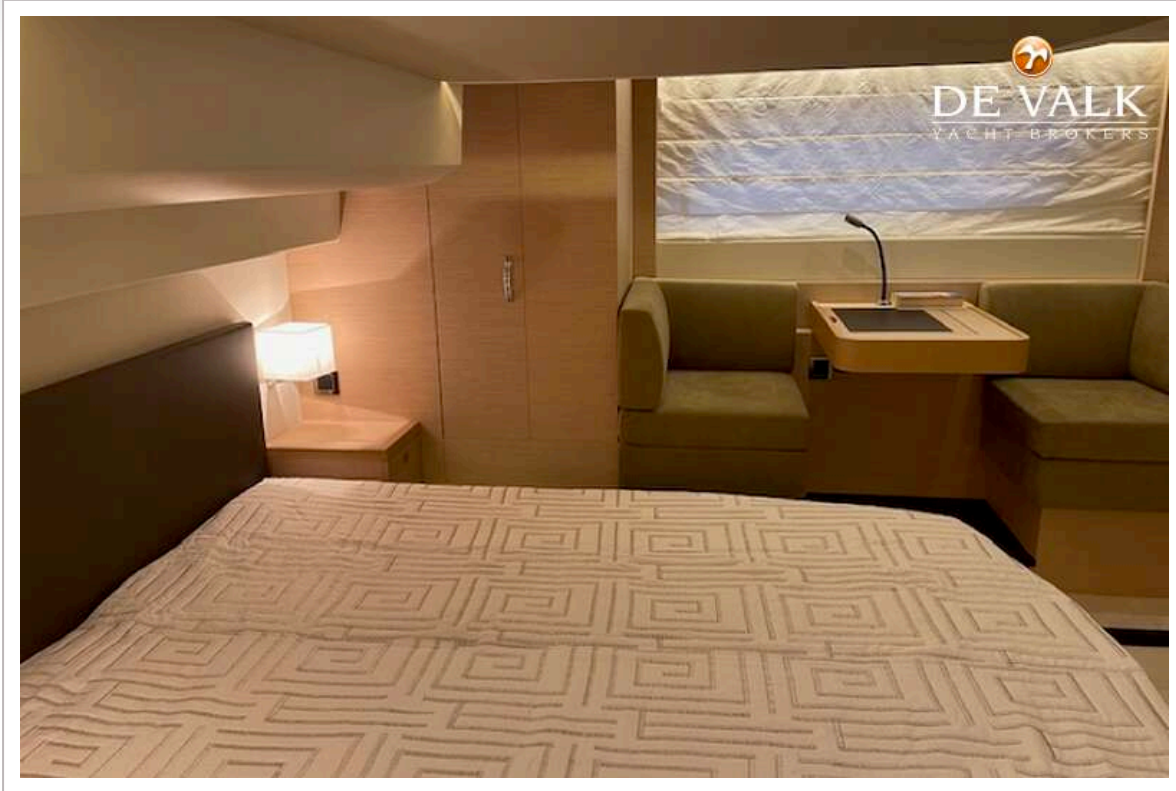
JEANNEAU PRESTIGE 50.



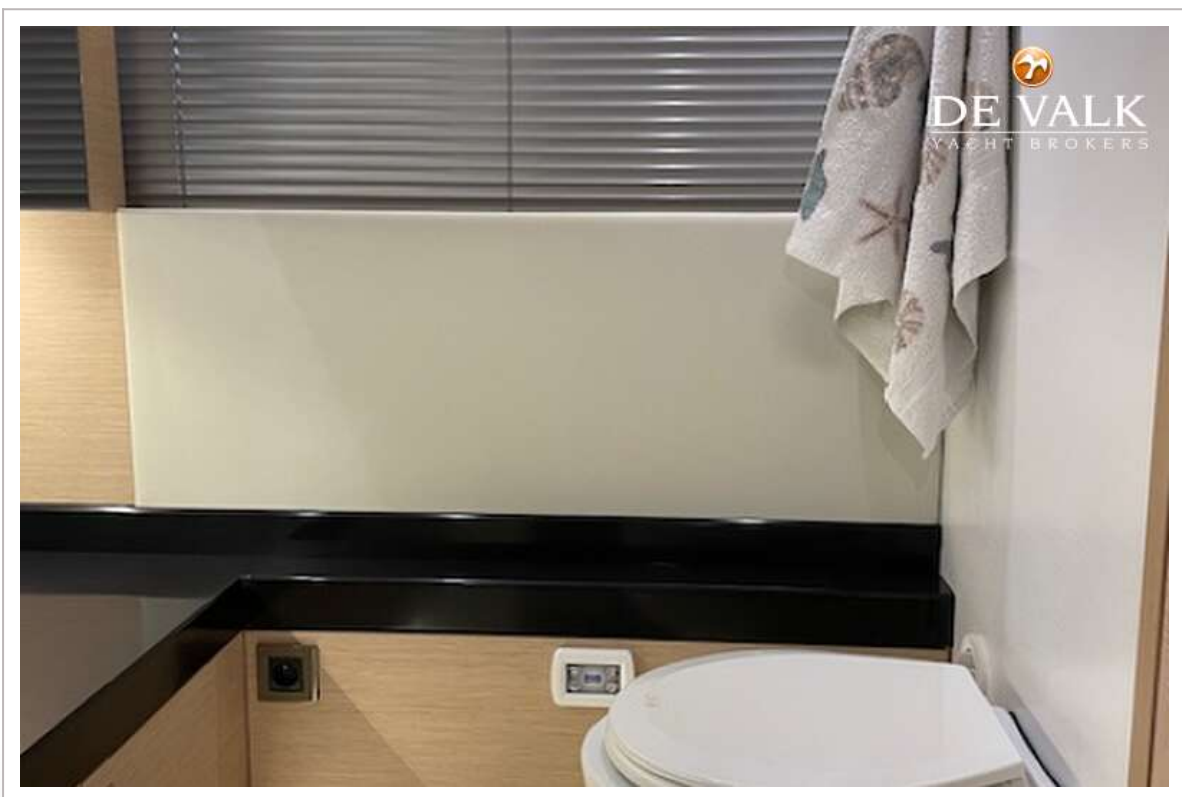
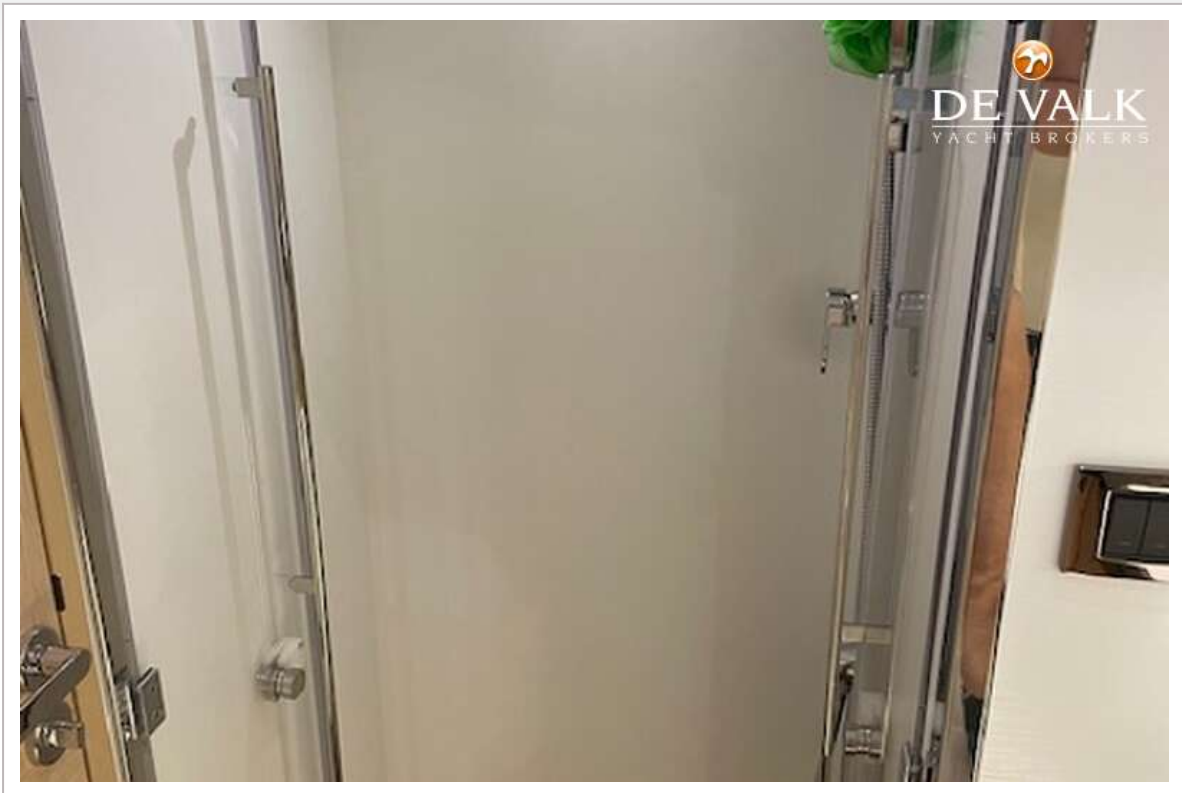
JEANNEAU PRESTIGE 50.



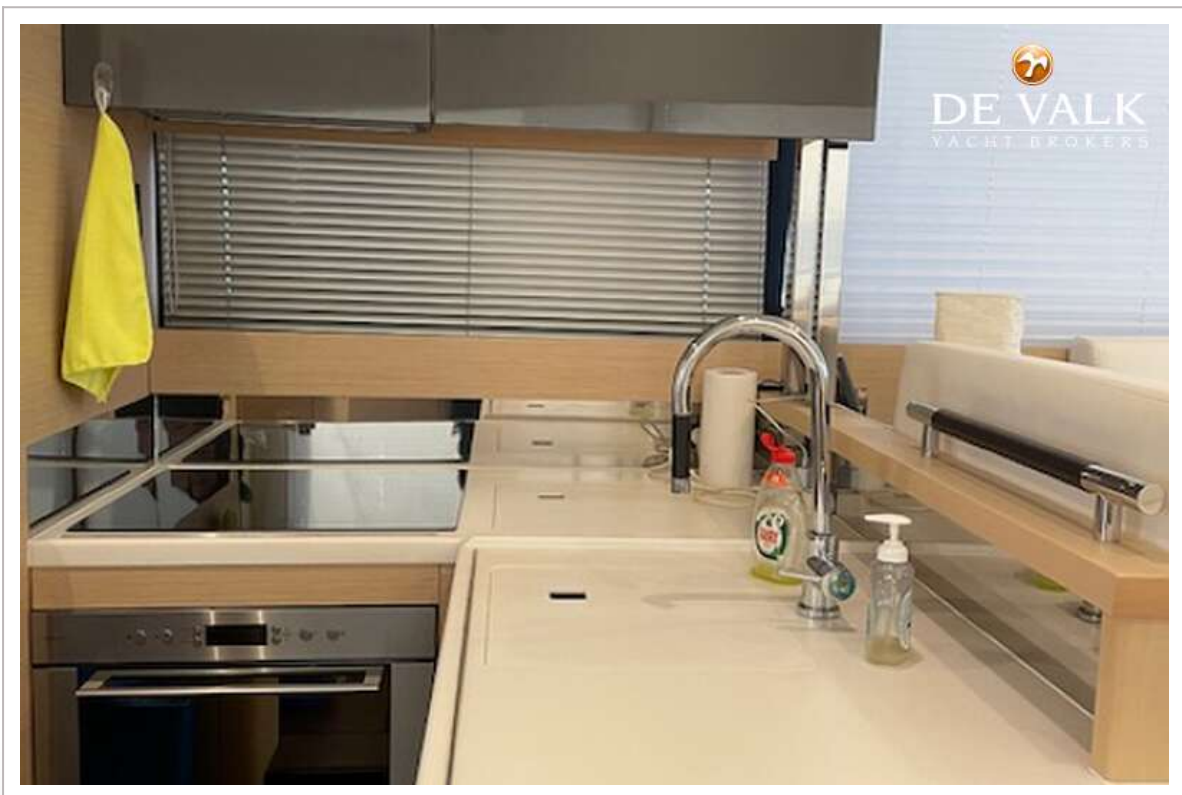
JEANNEAU PRESTIGE 50.



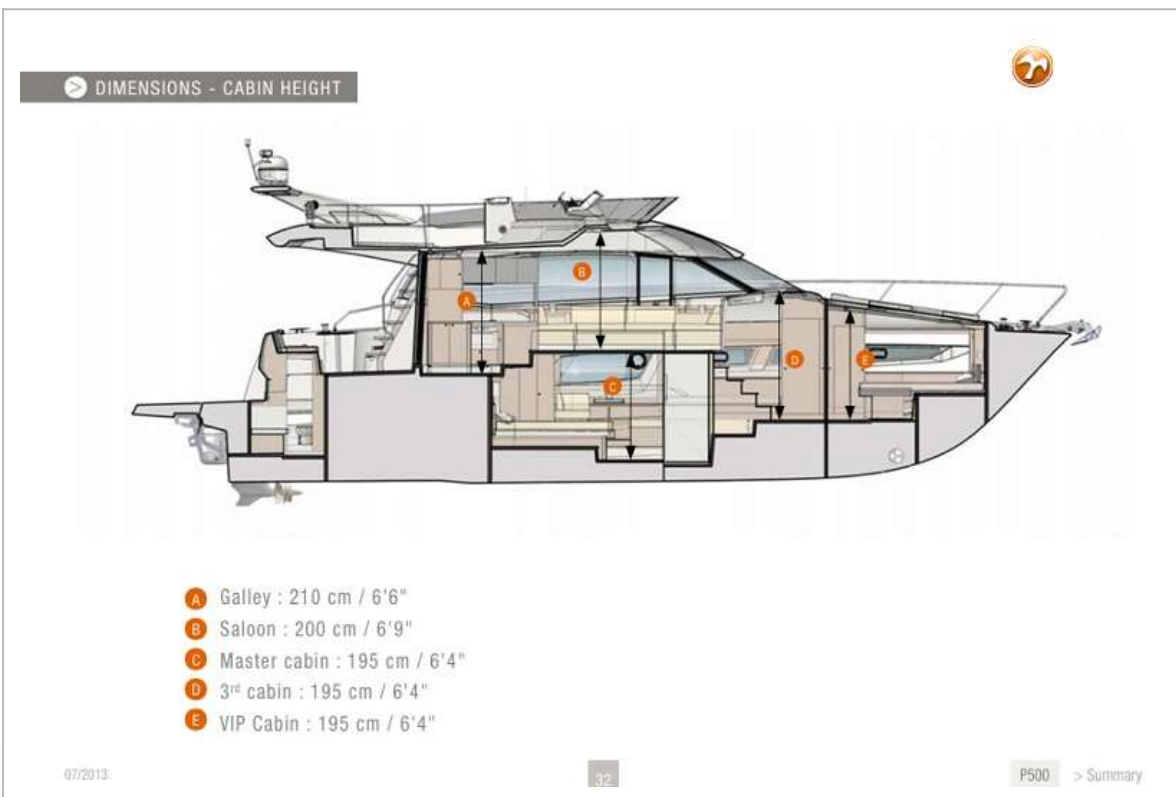
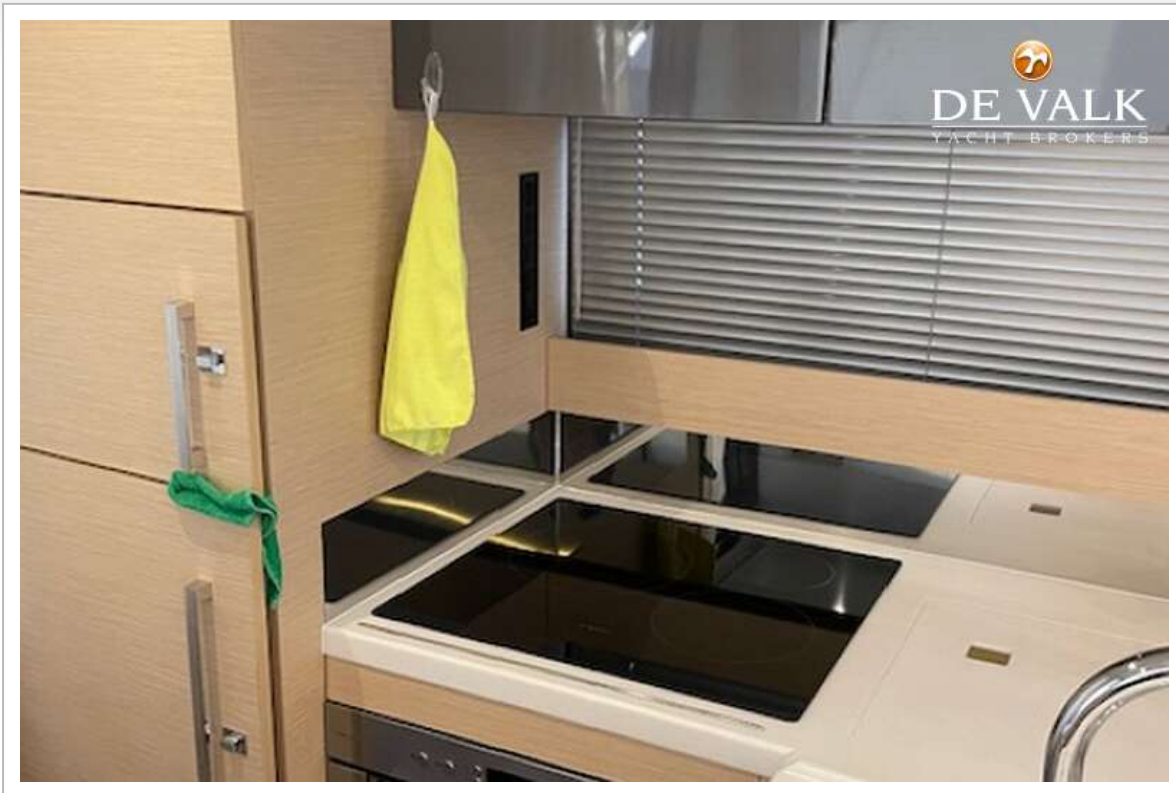
JEANNEAU PRESTIGE 50.




JEANNEAU PRESTIGE 50.



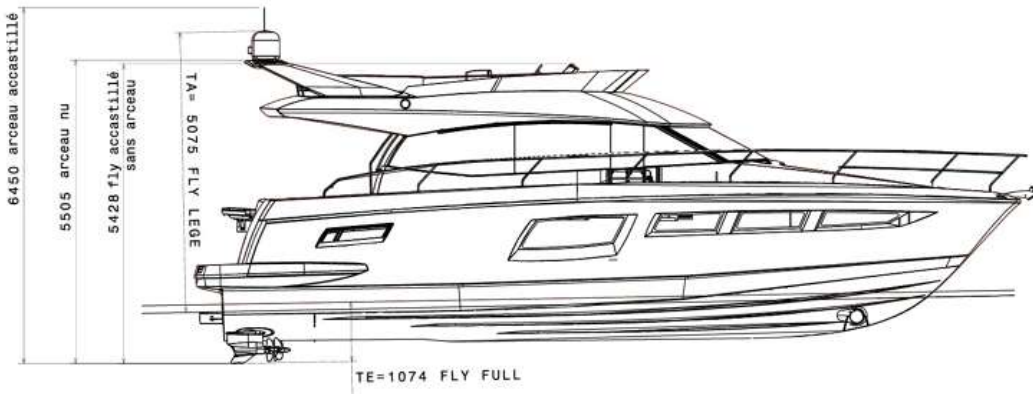
JEANNEAU PRESTIGE 50.



JEANNEAU PRESTIGE 50.




BATEAU FINI FLY ACCASTILLE



Packing list

Overall length	Overall width	Overall height	Height on cradle	Weight (kg)	Volume on cradle (m³)
15,20 m	4,51 m	5,00 m	5,15 m	13 000	353,04

Pulpits, propellers, rollbar, fly table, fly galley, handrails, windscreen, rudder and control panel disassembled




DIMENSIONS

- A** L: 360 cm / 11'8"
- B** L: 165 cm / 5'4"
- C** L: 111 cm / 3'6"
- D** L: 340 cm / 11'1"
- E** L: 441 cm / 14'5"
- F** L: 165 cm / 5'4"
- G** L: 270 cm / 8'9"




Max. load on gangway:
250 kg / 551 Lbs




JEANNEAU PRESTIGE 50.



ENGINE SPECIFICATIONS

ENGINE SPECIFICATIONS

Engine brand	VOLVO
Engine on board	2
Fuel type	DIESEL
Engine model	D6
Gear box	IPS 600
Gear box ratio	1,82
Engine power	2 x D6 435 Hp
Transmission	IPS
Propeller	IPS T5 VOLVO

TEST FIGURES*

RPM	Speed (knots)	Total consumption for both engines		dBA level at helm station	Range (Nautical miles /1852 m)
		L/h	US gal		
1 000	6,40	6,00	1,6	44,0	1 387
1 500	9,00	21,00	5,5	56,0	557
2 000	11,00	44,00	11,6	63,0	325
2 200	12,40	55,00	14,5	66,0	293
2 400	14,50	66,00	17,4	66,0	286
2 600	16,70	83,00	21,9	68,0	262
2 800	19,00	96,00	25,4	69,0	257
3 000	21,50	113,00	29,8	71,0	247
3 200	24,10	130,00	34,3	73,0	241
3 400	26,00	146,00	38,6	73,0	232
3 570	28,00	167,00	44,1	74,0	218

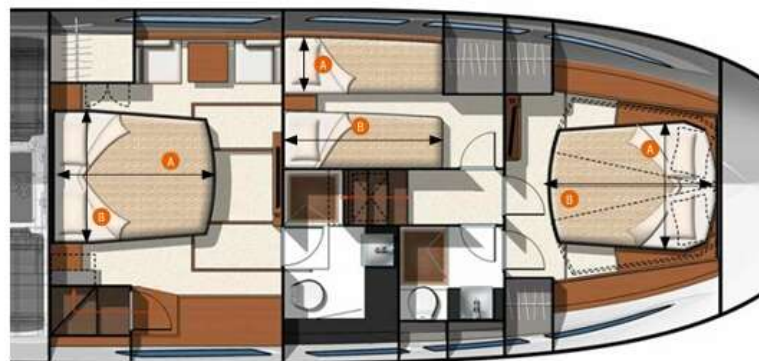
**W/o hydraulic platform*
 Max speed with hydraulic platform : 27 knots

DIMENSIONS - BEDS



CENTRAL CABIN

FORWARD CABIN



- | | | |
|----------------------------|----------------------------|----------------------------|
| A L : 203 cm / 6'6" | A L : 71 cm / 2'3" | A L : 146 cm / 4'8" |
| B L : 164 cm / 5'4" | B L : 194 cm / 6'5" | B L : 204 cm / 6'7" |



PRESENTATION

INTERIOR

3-panel opening door

Galley (one step down) serving the interior and cockpit

Saloon / dining area

Location for optional television

Forward sundeck with sun awning (L : 2,70 m - l : 1,90 m)

Private access to owner's suite

Saloon with bench seating - 360°

Instrument panel with fitting for twin multifunctional display

Bench seating at the helm - 2 seats

Location for optional television

07/2013

21

P500 > Summary

