



PRINCESS V50

# PRINCESS V50

## BROKER'S COMMENTS

This Princess V50 is a sleek and sporty luxury motor yacht, designed for both performance and comfort. This Princess V50 features a contemporary V Class exterior with a full-length hull window, allowing natural light to flood the interior. The cockpit is designed for al-fresco living, featuring an elongated canopy for shade and protection. Advanced technology such as the Volvo Penta assisted docking system and Garmin smart boat system enhance the onboard experience. Combining elegant design and high performance, she is an excellent choice for those seeking a versatile and stylish motor yacht.

*Raoul van der Werf*

## SPECIFICATIONS

<b>Dimensions</b>	15.80 x 4.02 x 1.00 (m)	<b>Builder</b>	Princess Yachts International
<b>Built</b>	2018	<b>Cabins</b>	2
<b>Material</b>	GRP	<b>Berths</b>	4
<b>Engine(s)</b>	2 x VOLVO IPS 600 diesel	<b>Hp/Kw</b>	2 x 429.00 (hp), 315.74 (kw)
<b>Asking price</b>	€ 795.000 (VAT Paid)	<b>Lying</b>	contact Antibes

## CONTACT

<b>Sales office</b>	De Valk Antibes	<b>Telephone</b>	+33 492 91 0202
<b>Address</b>	2, Avenue de Verdun 06600 Antibes FR	<b>E-mail</b>	antibes@devalk.nl

## DISCLAIMER

These particulars are given in good faith as supplied but cannot be guaranteed.



# PRINCESS V50

## GENERAL

<b>Model</b>	PRINCESS V50
<b>Type</b>	motor yacht
<b>LOA (m)</b>	15,80
<b>Beam (m)</b>	4,02
<b>Draft (m)</b>	1,00
<b>Year built</b>	2018
<b>Builder</b>	Princess Yachts International
<b>Country</b>	United Kingdom
<b>CE norm</b>	B
<b>Hull material</b>	GRP
<b>Hull colour</b>	white
<b>Hull shape</b>	deep-V
<b>Superstructure material</b>	GRP
<b>Deck material</b>	GRP
<b>Cockpit deck finish</b>	teak
<b>Window frame</b>	polymer
<b>Deckhatch</b>	yes
<b>Fuel tank (litre)</b>	1550 L
<b>Level indicator (fuel tank)</b>	yes
<b>Freshwater tank (litre)</b>	414 L
<b>Level indicator (freshwater)</b>	yes
<b>Blackwater tank (litre)</b>	yes
<b>Level indicator (blackwater)</b>	yes
<b>Wheel steering</b>	hydraulic

## ACCOMMODATION

<b>Cabins</b>	2
<b>Berths</b>	4
<b>Saloon</b>	yes
<b>Heating</b>	yes



# PRINCESS V50

Air-conditioning	reverse cycle airco
Navigation center	yes
Galley	yes
Countertop	corian
Sink	stainless steel
Cooker	induction
Oven	yes
Microwave	yes
Fridge	yes
Freezer	yes
Hot water system	yes
Water pressure system	yes
Dishwasher	yes
Owners cabin	double bed
Bed length (m)	2m
Wardrobe	drawers and shelves
Bathroom	en suite
Toilet	en suite
Toilet system	electric
Wash basin	in the bathroom
Shower	en suite
Guest cabin 1	double bed
Bed length (m)	2m
Wardrobe	yes
Bathroom	yes
Toilet	yes
Toilet system	electric
Wash basin	yes
Tender garage	yes

## MACHINERY



# PRINCESS V50

No of engines	2
Make	VOLVO
Type	IPS 600
HP	429
kW	315.74
Fuel	diesel
Maximum speed (kn)	34
Cruising speed (kn)	32
Engine hours	533
Engine controls	electrical Joy stick
Gearbox	yes
Bowthruster	Side power
Exhaust	watercooled
Propeller type	fixed
Electric bilge pump	yes
Bilge alarm	yes
Electrical installation	yes
Generator	wet exhaust
Batteries	yes
Start battery	2
Service battery	yes
Battery charger	yes
Inverter	yes
Shorepower	with cable
Stabilizers	Seakeeper
Trimtabs	Benett

## NAVIGATION

Compass	yes
Depth sounder	yes
VHF	Raymarine



# PRINCESS V50

Autopilot	yes
Radar/GPS/plotter	Raymarine Hybride touch 12"
Electronic chart(s)	yes
Navigation lights	yes
Extra info	Volvo Penta Assisted Docking
Extra info	Garmin Smart Boat System

## EQUIPMENT

Cockpit cover	yes
Cockpit cushions	yes
Cockpit table	yes
Boarding ladder	yes
Gangway	yes
Deck shower	yes
Anchor	yes
Anchor chain	yes
Sea railing	yes
Horn	yes
Fenders	yes
Mooring lines	yes
TV	Flat screen TV
Radio	yes
Cockpit speakers	yes



# PRINCESS V50



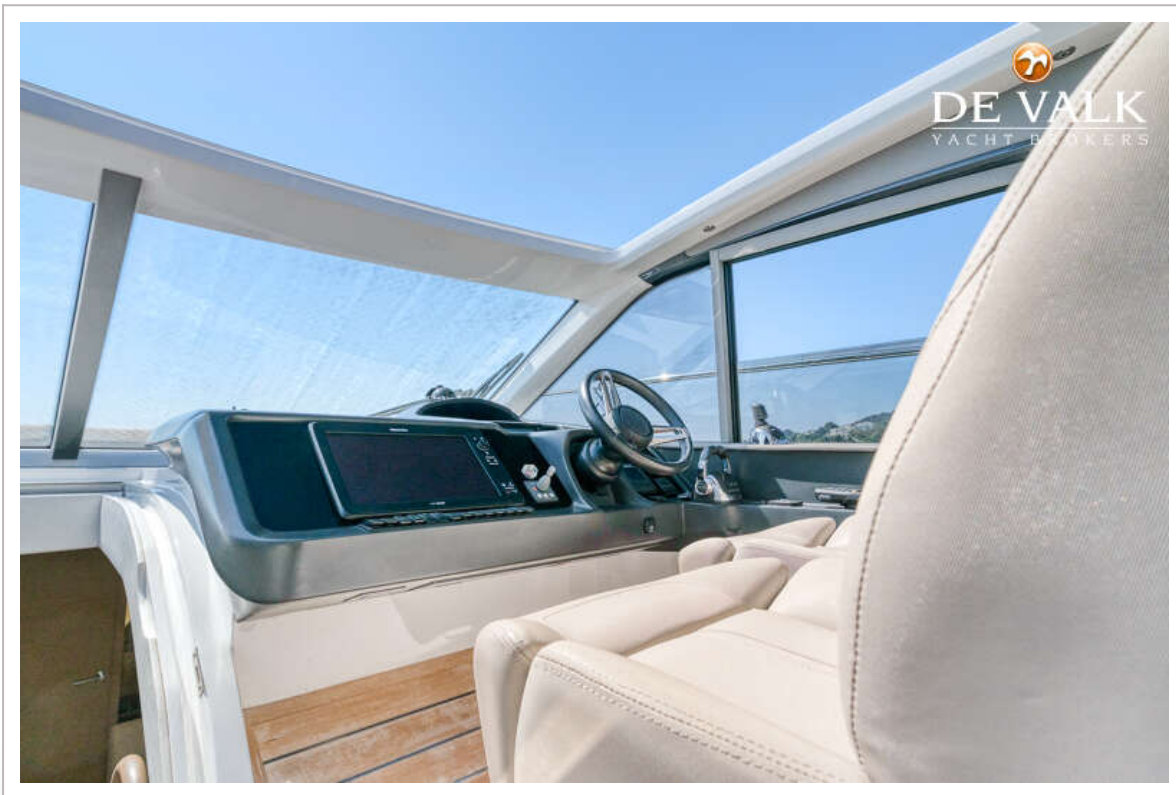
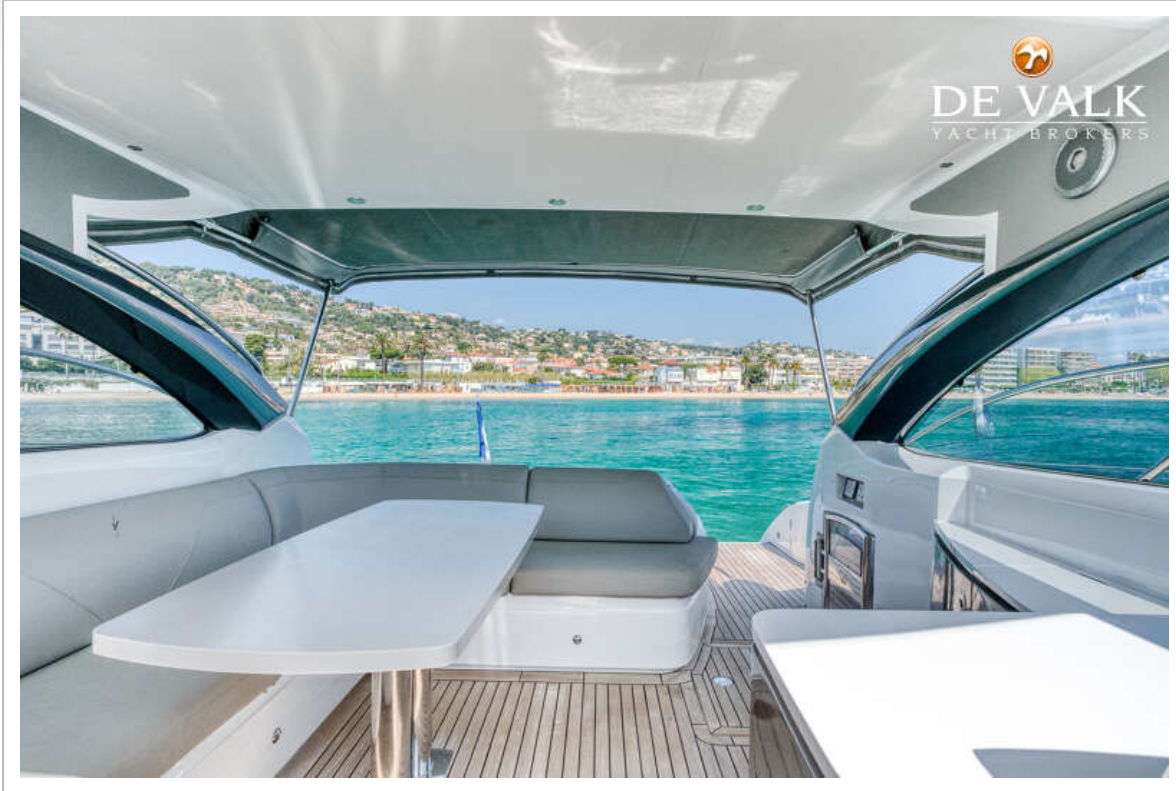
# PRINCESS V50



# PRINCESS V50



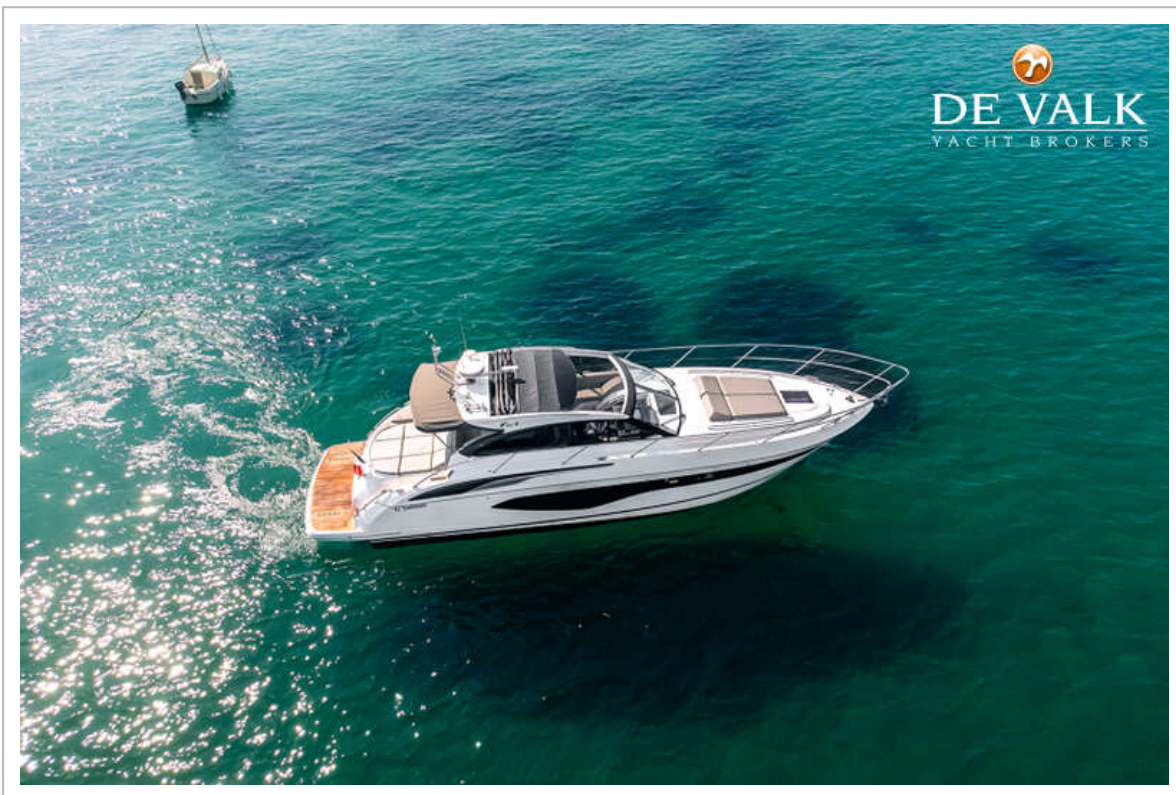
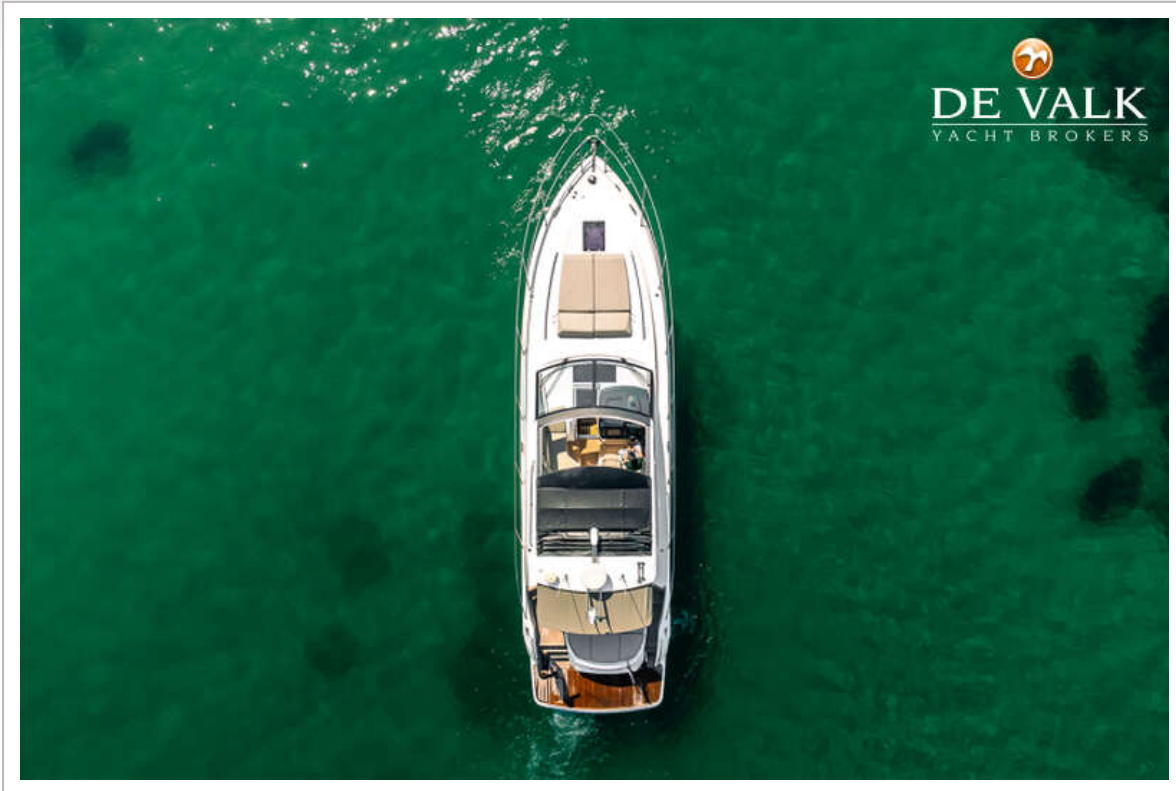
# PRINCESS V50



# PRINCESS V50



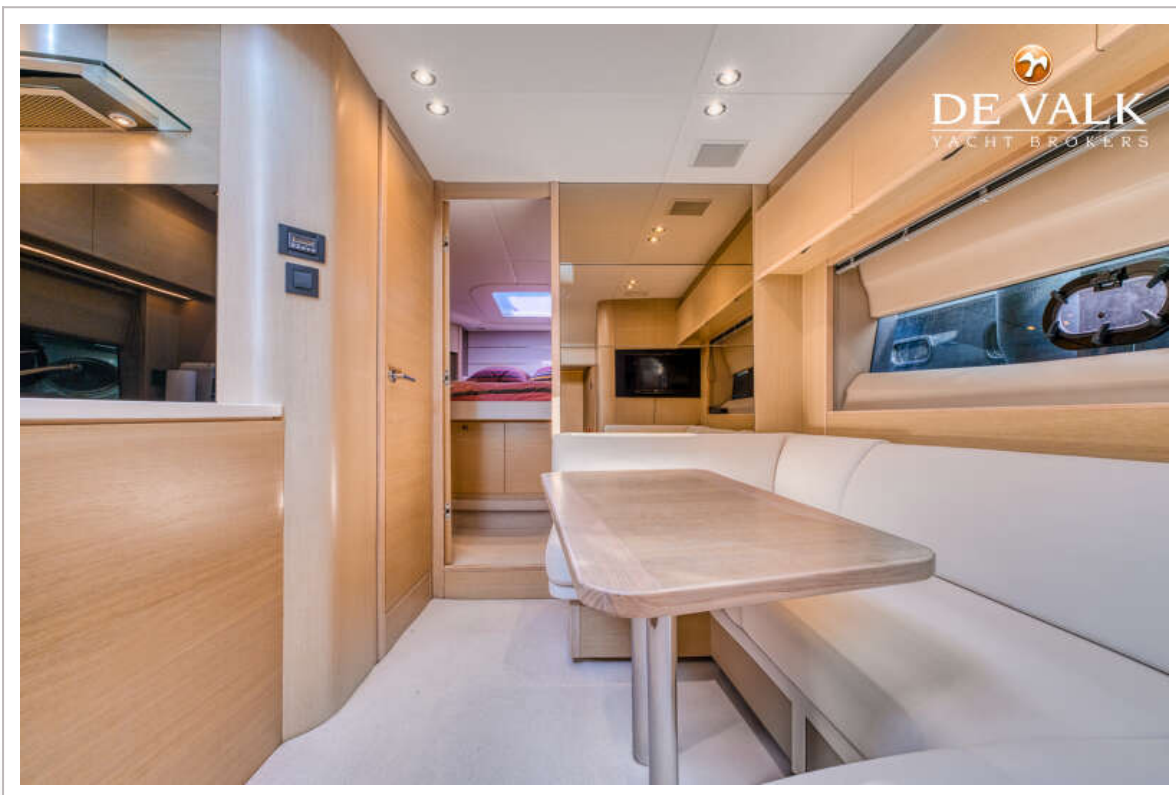
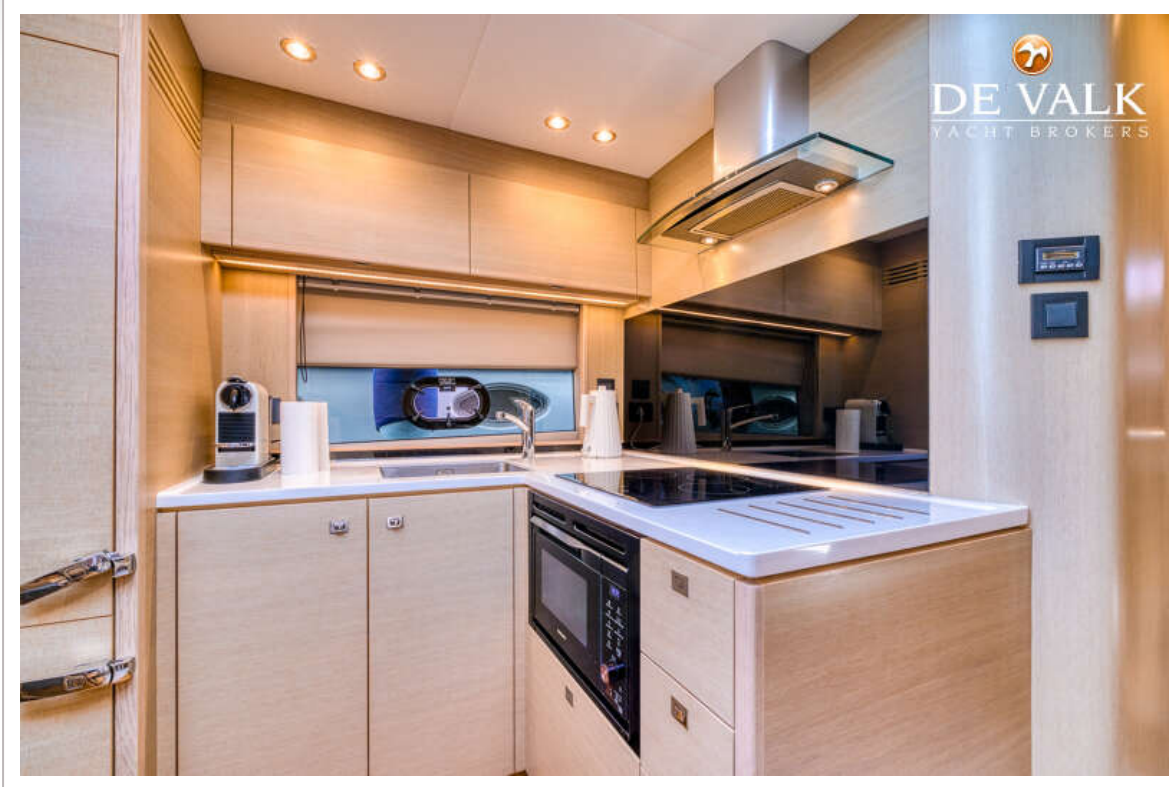
# PRINCESS V50



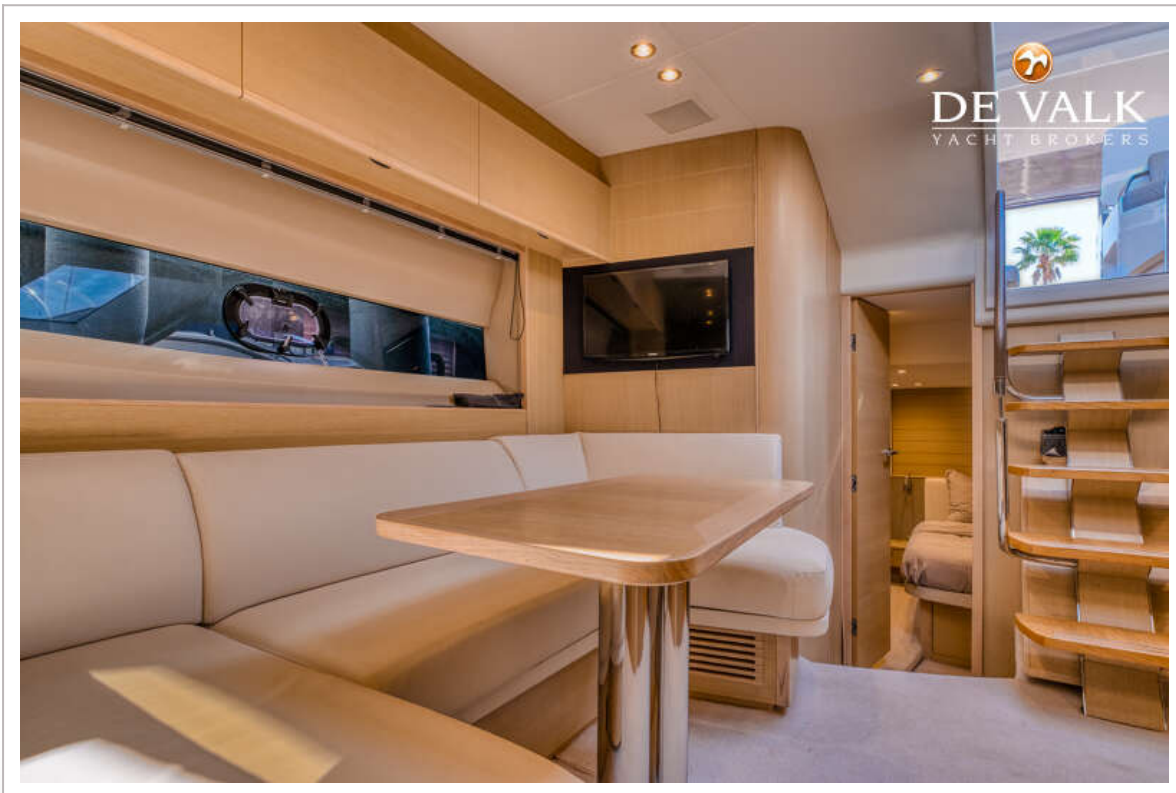
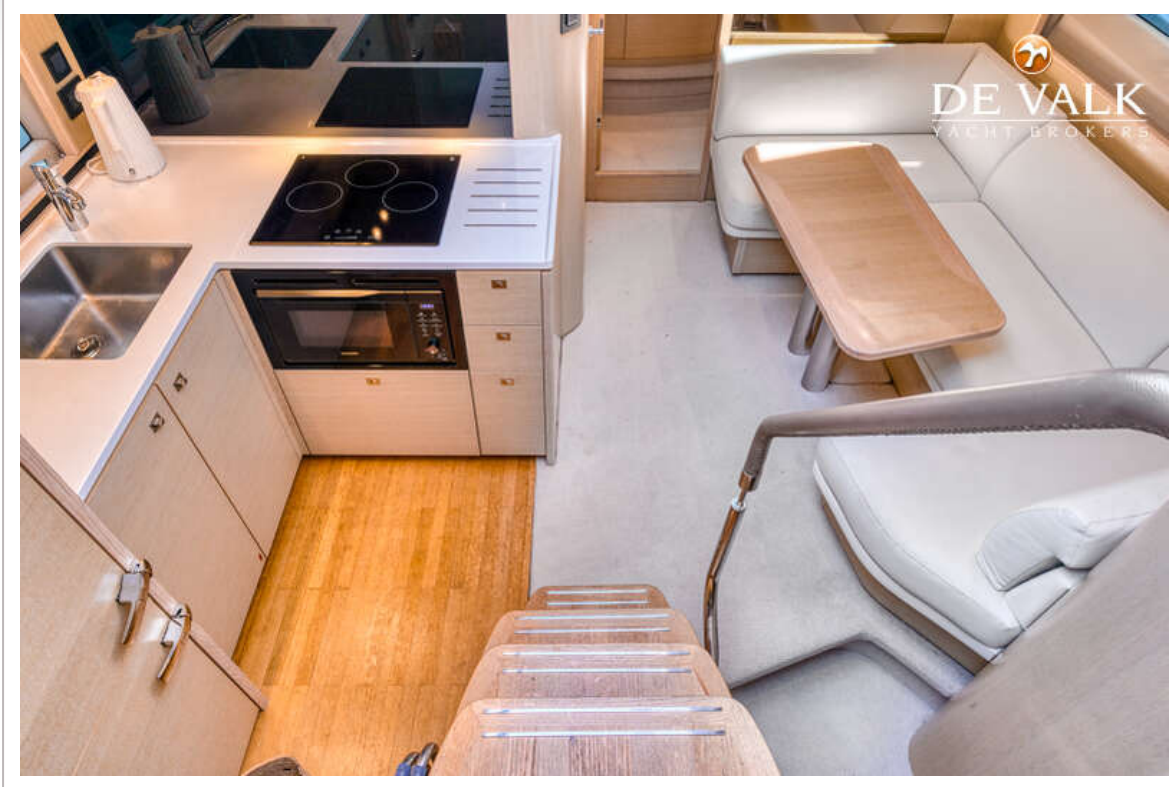
# PRINCESS V50



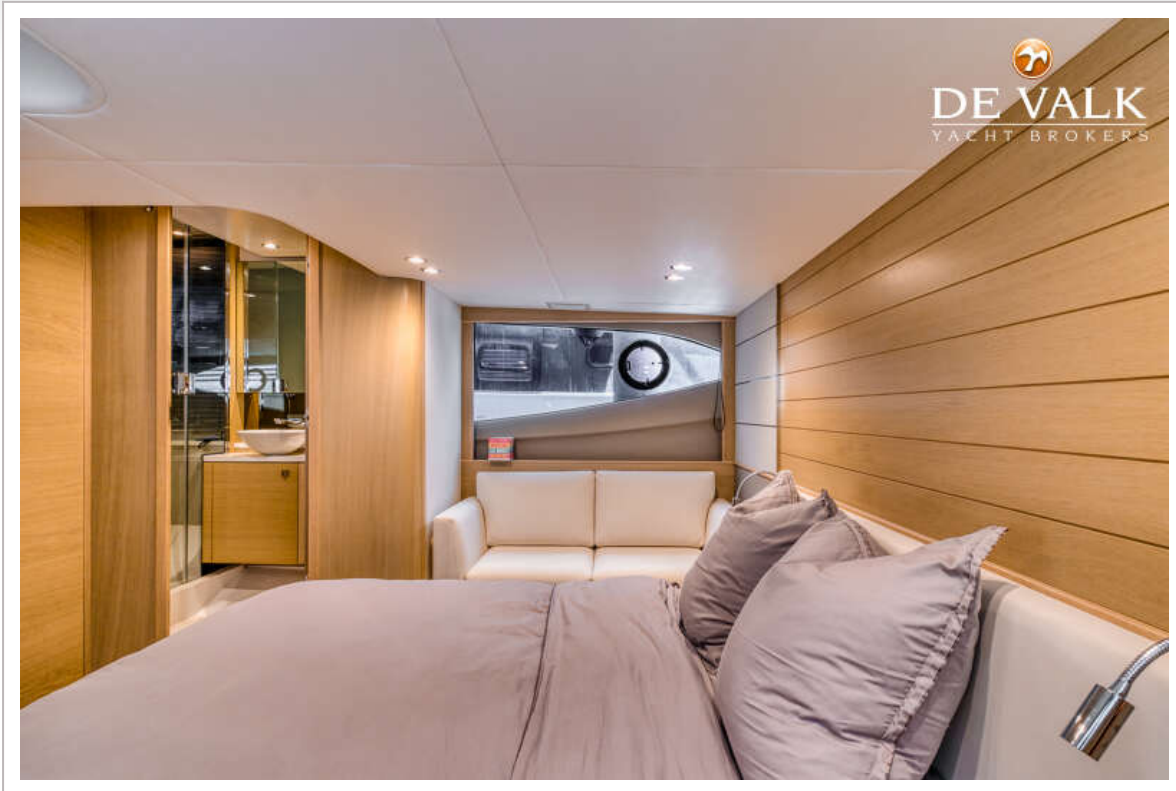
# PRINCESS V50



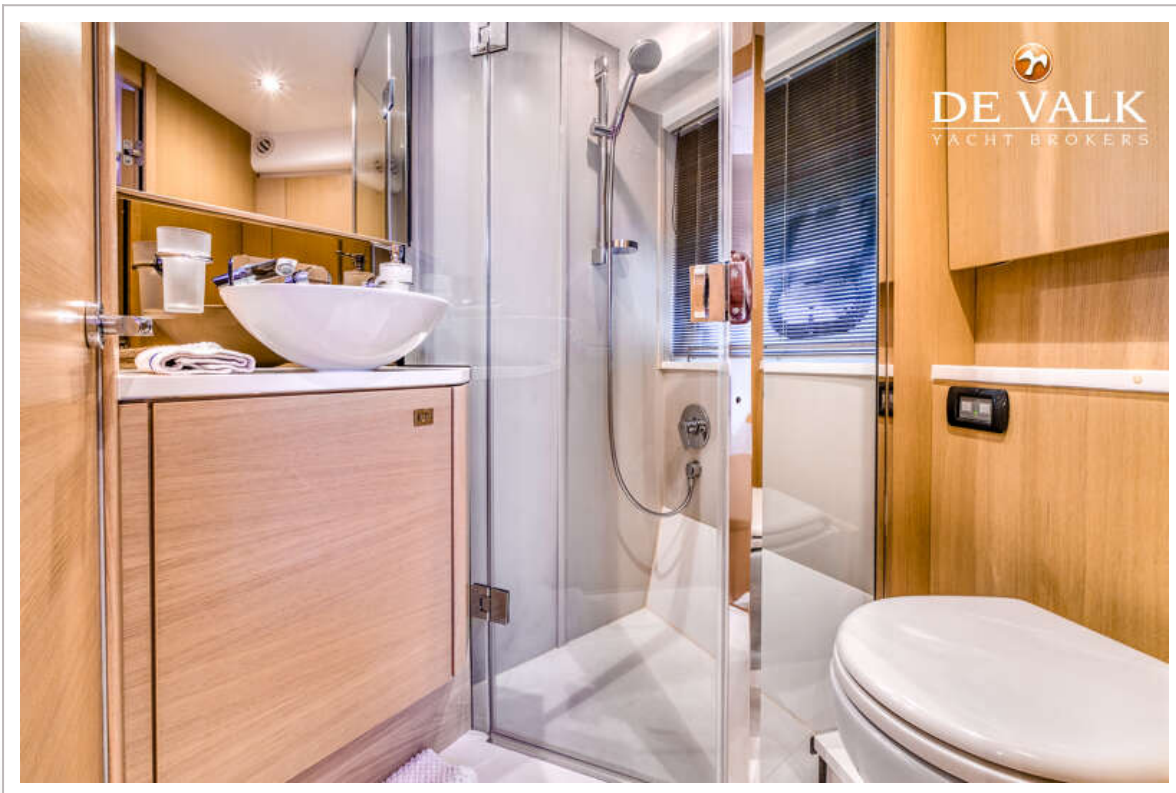
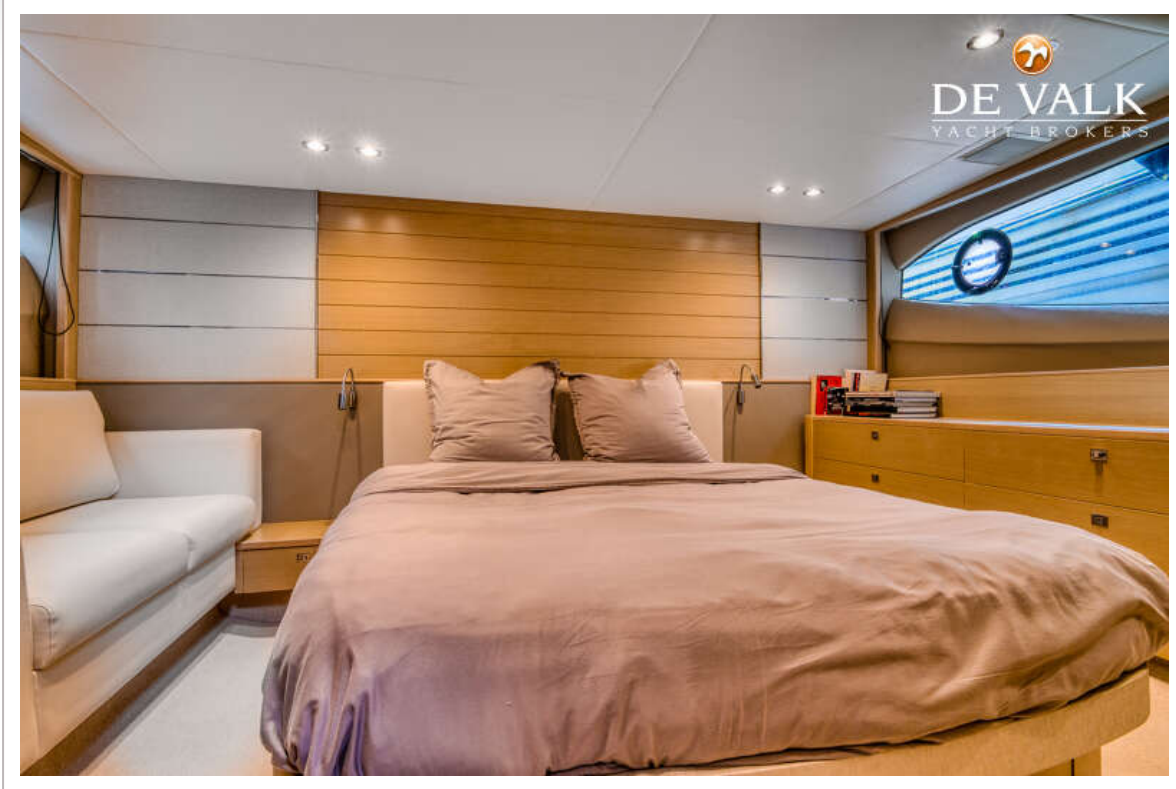
# PRINCESS V50



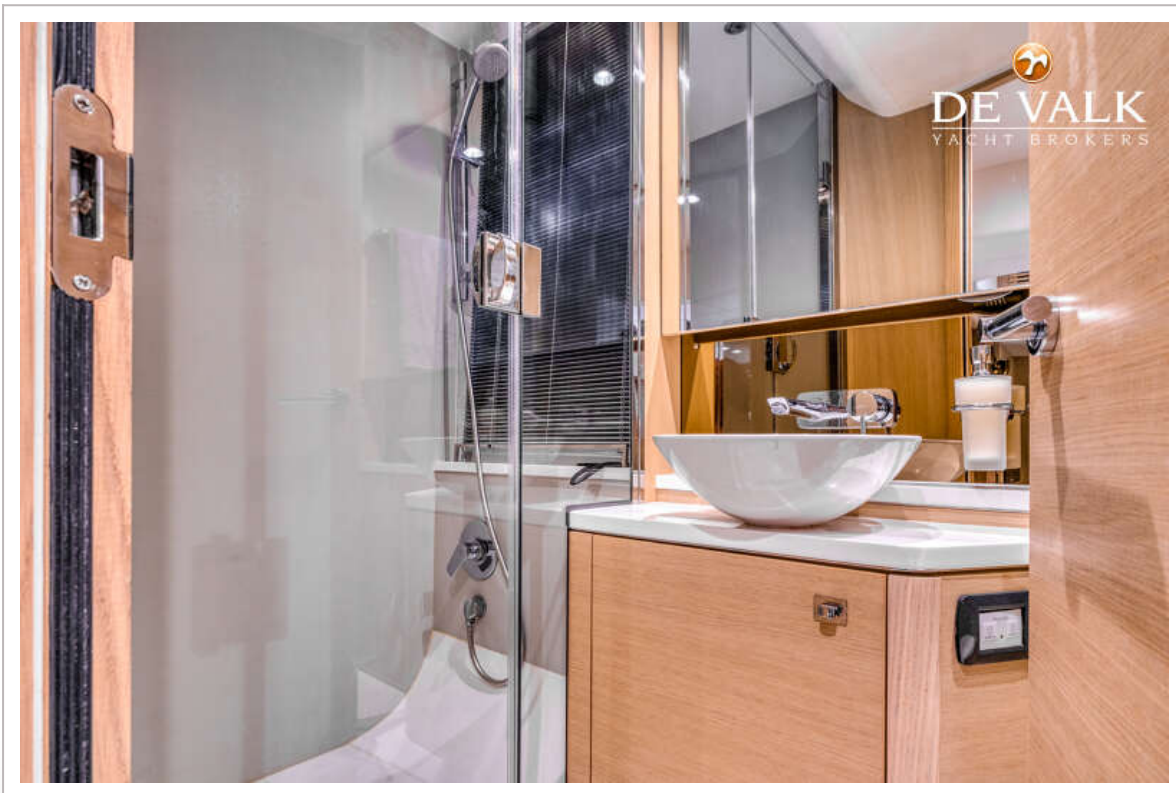
# PRINCESS V50



# PRINCESS V50



# PRINCESS V50



# PRINCESS V50



# PRINCESS V50

