



DE VALK
YACHT BROKERS



OPTIMUS 45



DE VALK
YACHT BROKERS

BROKER'S COMMENTS

The Optimus 45 is a remarkable zero-emission performance catamaran, combining lightweight composite construction with advanced electric propulsion and solar technology. Designed by Schionning and built in Belgium, she offers outstanding sailing performance thanks to her retractable daggerboards, powerful rig and optimized weight distribution. CE Category A certified, the Optimus 45 delivers fast, comfortable and sustainable bluewater cruising with exceptional safety and self-sufficiency.

Joris van de Rijt

SPECIFICATIONS

Dimensions	14.00 x 7.40 x 0.80 (m)	Builder	Optimus Yachtbuilders
Built	2019	Cabins	3
Material	Composite	Berths	8
Engine(s)	2 x Oceanvolt SD10 elec	Hp/Kw	2 x 20.00 (hp), 14.72 (kw)
Asking price	€ 780.000 (VAT Not paid)	Lying	elsewhere / Not at sales office

CONTACT

Sales office	De Valk Sint Annaland B.V.	Telephone	+31 166 601 000
Address	Koelhuisweg 4 4697 RM Sint Annaland NL	E-mail	sintannaland@devalk.nl

DISCLAIMER

These particulars are given in good faith as supplied but cannot be guaranteed.



GENERAL

Model	OPTIMUS 45
Type	catamaran sailing yacht
LOA (m)	14,00
LWL (m)	13,60
Beam (m)	7,40
Draft (m)	0,80
Air draft (m)	21,00
Headroom (m)	2,05
Year built	2019
Builder	Optimus Yachtbuilders
Country	Belgium
Designer	Jeff Schionning – Schionning Designs
Displacement (t)	6,8
CE norm	A
Hull material	composite
Hull colour	blue
Superstructure material	composite
Deck material	composite
Deck finish	non-skid moulded in
Cockpit deck finish	non-skid moulded in
Window material	Plexiglass
Portholes	6 x
Insulation	foam
Radar arch	non collapsible
Freshwater tank (litre)	200
Level indicator (freshwater)	yes
Blackwater tank (litre)	25
Level indicator (blackwater)	yes
Greywater tank (litre)	215
Level indicator (greywater)	yes



Wheel steering	2 x Jefa
Emergency tiller	yes
More info on hull	Foam, carbon, e-glass, epoxy construction
Extra info	Retractable daggerboards
Extra info	Draft with daggerboards down: 2,00m

ACCOMMODATION

Cabins	3
Berths	8
Interior	Lightweight composite cored panels
Floor	Composite cored panels
Deck saloon	yes
Saloon	yes
Headroom saloon (m)	2,05
Heating	diesel ducted hot air Webasto Airtop 55 Evo with remote
Chart table	yes
Aft Cabin	yes
Dining room	yes
Dinette	yes
Opening door to cockpit	yes
Galley	yes
Sink	stainless steel 2 x
Cooker	calor gas GN Espace 3 burner
Oven	GN Espace
Fridge	Isotherm 172L with freezer compartment
Hot water system	220V + engine 60L
Water pressure system	electrical
Owners cabin	double bed (starboard forward)
Bed length (m)	2,00 x 1,50
Bathroom	yes
Guest cabin 1	double bed (starboard aft)



Bed length (m)	2,10 x 1,40
Guest cabin 2	double bed (portside)
Bed length (m)	2,10 x 1,40
Bathroom	yes
Extra info	All interior lights LED

MACHINERY

No of engines	2
Make	Oceanvolt
Type	SD10
HP	20
kW	14.72
Fuel	electric
Year installed	2019
Engine hours	1092
Drive	sail-drive
Saildrive seal	2019
Engine controls	electrical
Propeller type	folding Gori
Propeller blades	3
Manual bilge pump	yes
Electric bilge pump	yes
Generator	Fisher Panda 10000i PMS
Batteries	2 x battery bank MG Lithium Ion LFP 48V 15kWh
Service battery	2 x 12 V Victron Lithium LFP batteries in series 24V – 200Ah
Battery monitor	Victron CGGX Power Control for 48V and 24V systems
Battery charger	Victron 24V
Battery charger/inverter	2 x Victron Quattro 48/8000
Solar panel	28 x 100W flexible solar panels
Shorepower	with cable
Watermaker	Preparations for 24V watermaker



NAVIGATION

Electric compass	NKE9 Axis Compass
Depth sounder/log	NKE
Windset	NKE HR Wind
Repeater	2 x NKE Multidisplay + 2 x keypad
VHF	Icom IC-M423G + remote
Autopilot	NKE Multigraphic autopilot control with 3x wireless remote
Radar	Furuno
Wifi antenna	NKE
Navigation lights	LED

EQUIPMENT

Bimini	Fixed
Cockpit cushions	yes
Cockpit table	Removable
Bathing platform	2 x
Boarding ladder	stainless steel
Anchor	25kg Spade
Anchor chain	50m 8mm
Anchor chain	yes
Chain counter	yes
Windlass	electrical 1500 W with remote control
Dinghy	rigid hull Highfield fixed alu hull
Outboard	EPropulsion Spirit 1.0
Davits	Completely laminated and carbon reinforced
Davits controls	manual
Sea railing	wire
Radar reflector	yes
Fenders	yes
Mooring lines	yes
Radio	Fusion MS-RA770 + 3 x FUSION PSA302B for cabins



Cockpit speakers	2 x Fusion
Speakers in salon	2 x Fusion
Fire extinguisher	yes

RIGGING

Rigging	fractional
Standing rigging	wire
Brand mast	Seldén
Material mast	aluminium
Spreaders	2 sets
Mainsail cover	Lazybag
Fully battened mainsail	75m ² Dyneema-Spectra EX-TDS140 (Trilam)
Jib	35m ² Dyneema-Spectra EX-TDS140 (Trilam)
Genoa furler	Selden
Code Zero	70m ² Code Zero, triradial Polyester Stormlite 210 with furler
Staysail	15m ² Staysail
Staysail furler	Facnor Click-FX+ 4500 with removable composite inner stay
Self tacking jib installation	yes
Reefing System	quick-one-line-reefing
Primary sheet winch	XT55 ST for Mainsail + traveller (electric)
Genoa sheetwinches	2 x XT44 ST
Halyard winches	2 x XT55 on mast
Extra info	Sails area upwind: 110 m ²



OPTIMUS 45



OPTIMUS 45



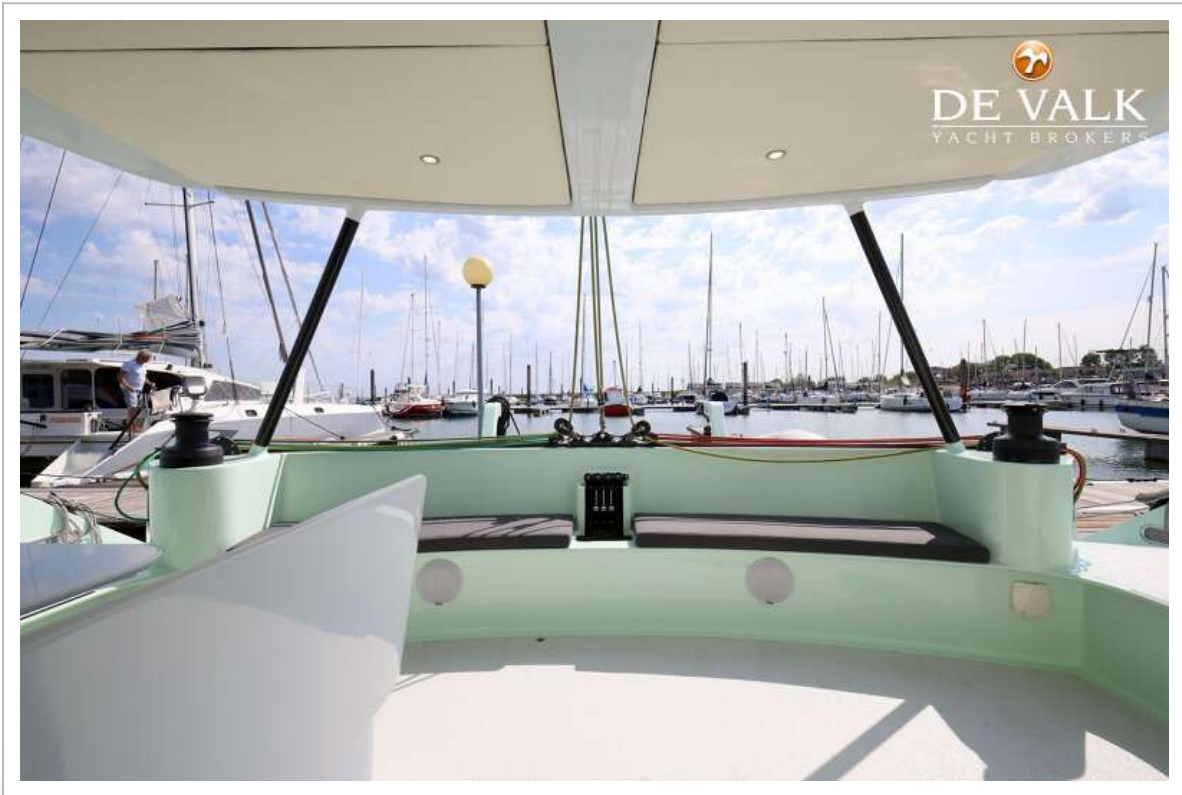
OPTIMUS 45



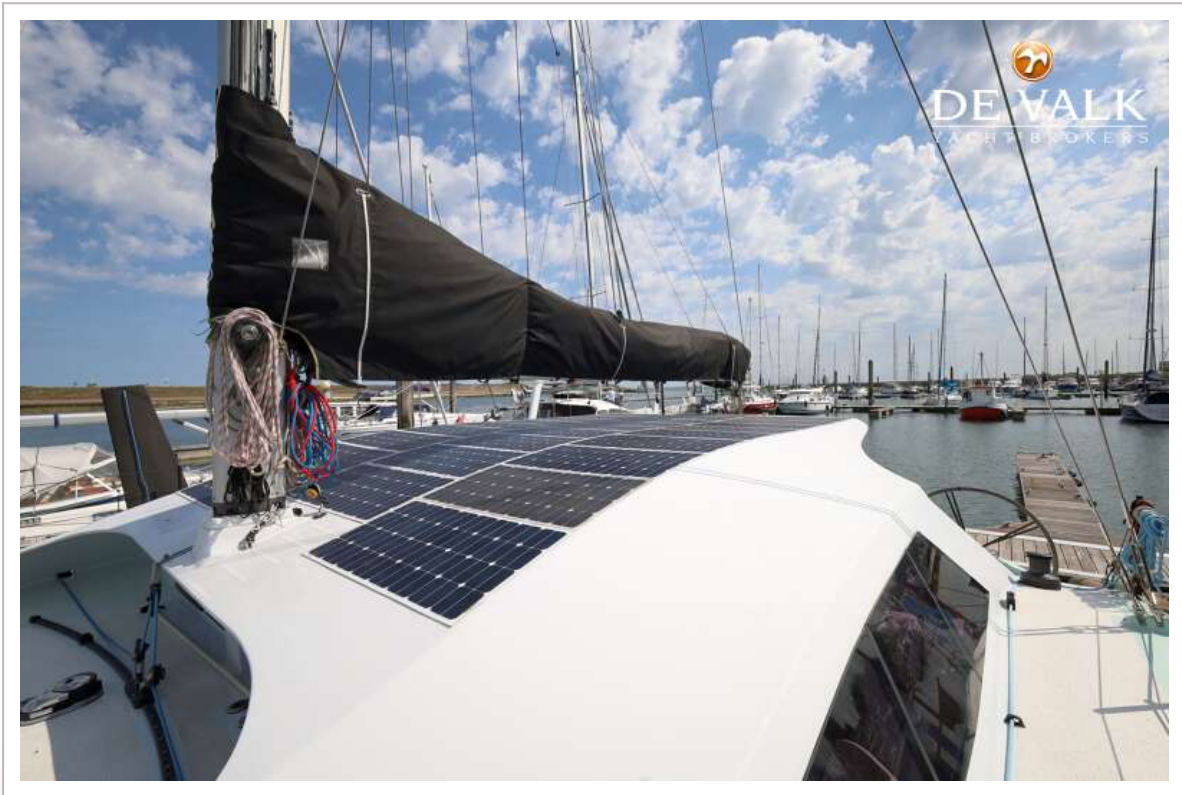
OPTIMUS 45



OPTIMUS 45



OPTIMUS 45



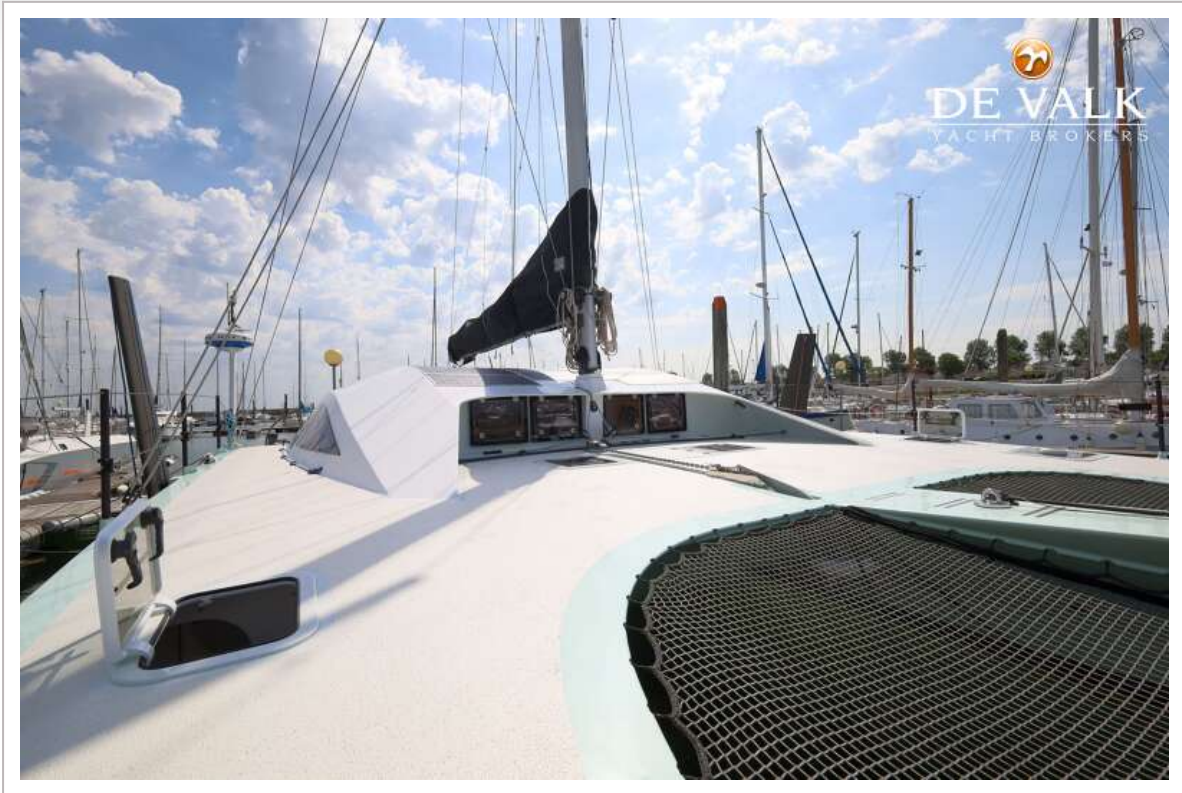
OPTIMUS 45



OPTIMUS 45



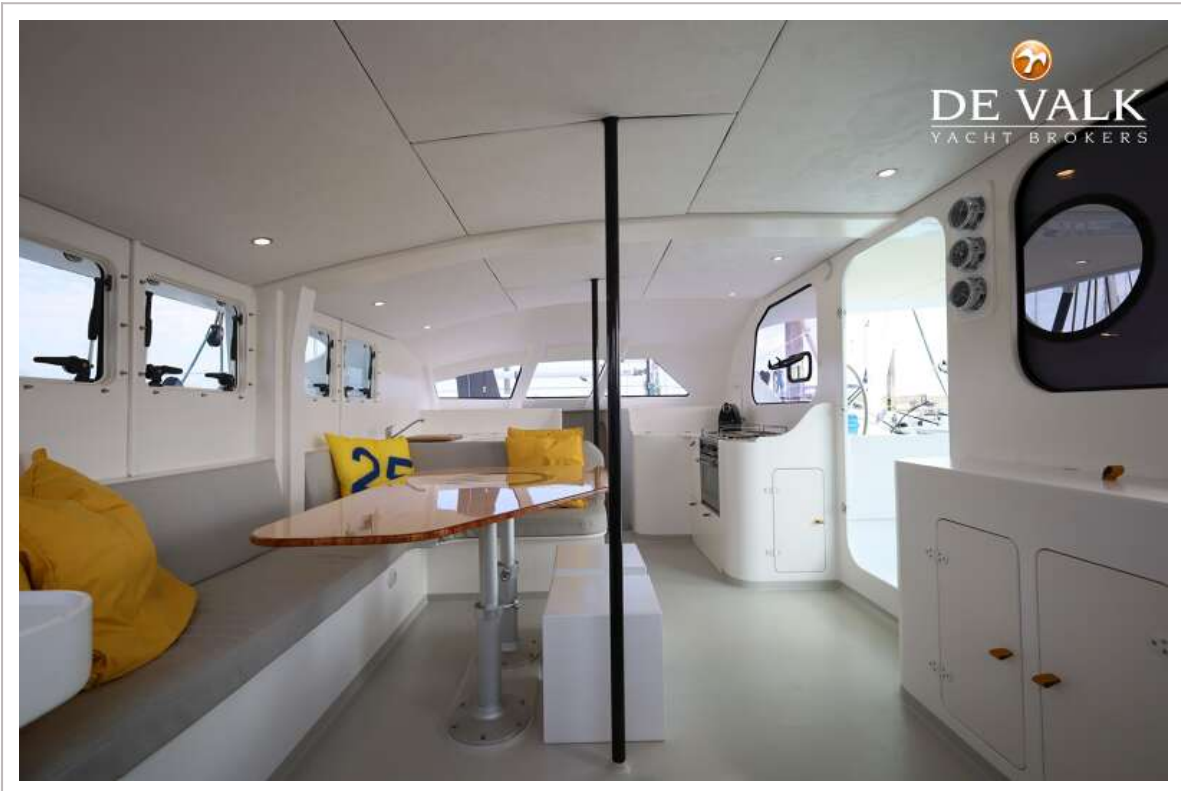
OPTIMUS 45



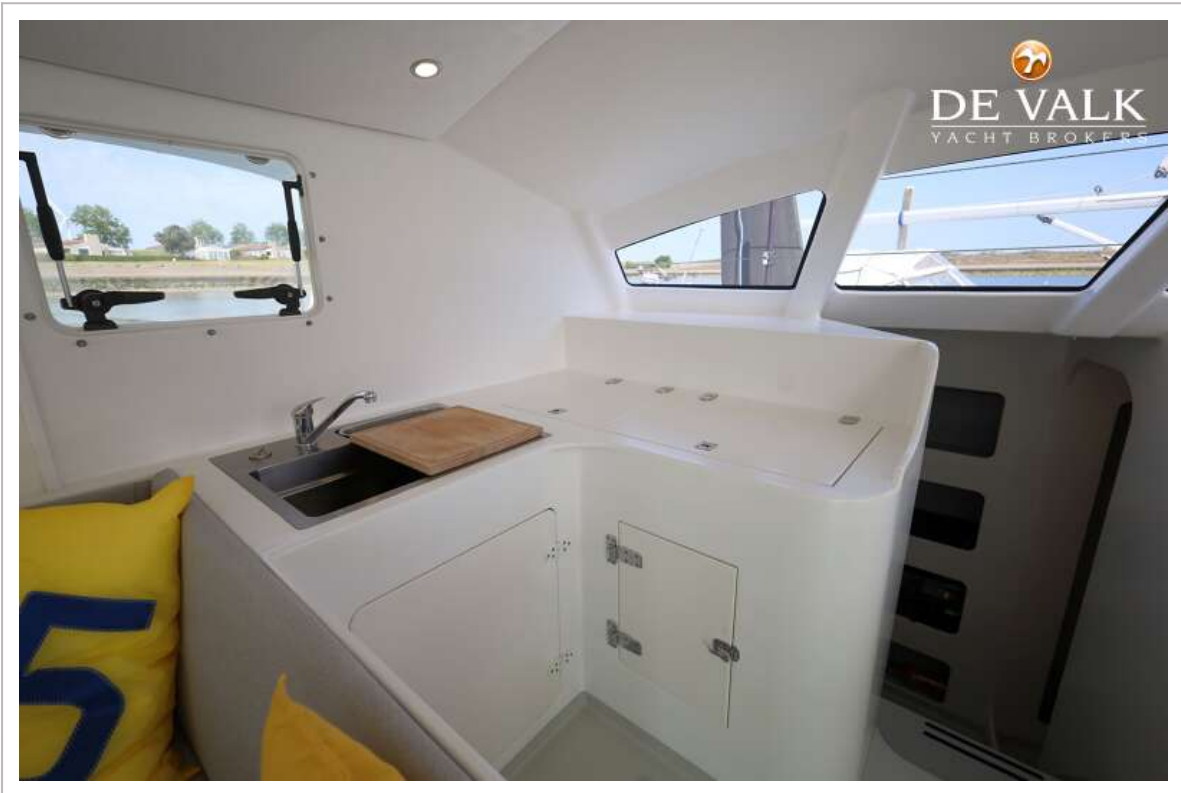
OPTIMUS 45



OPTIMUS 45

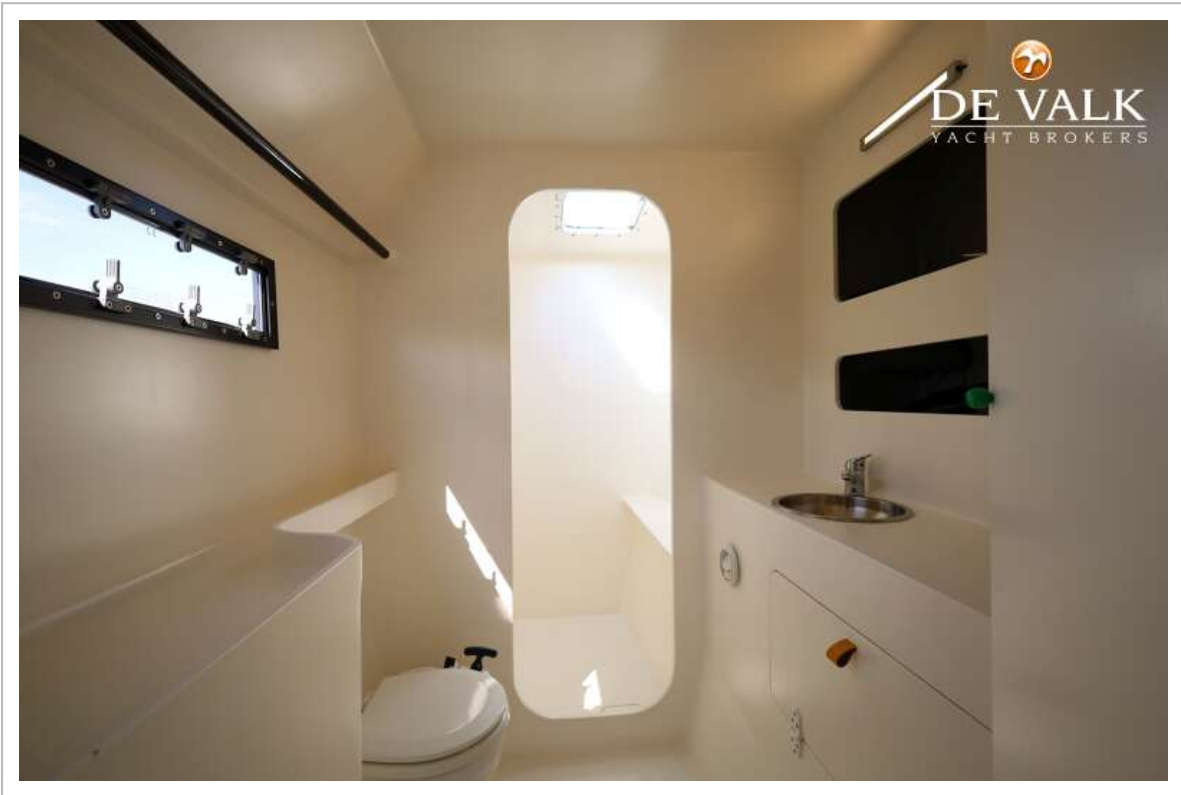


OPTIMUS 45

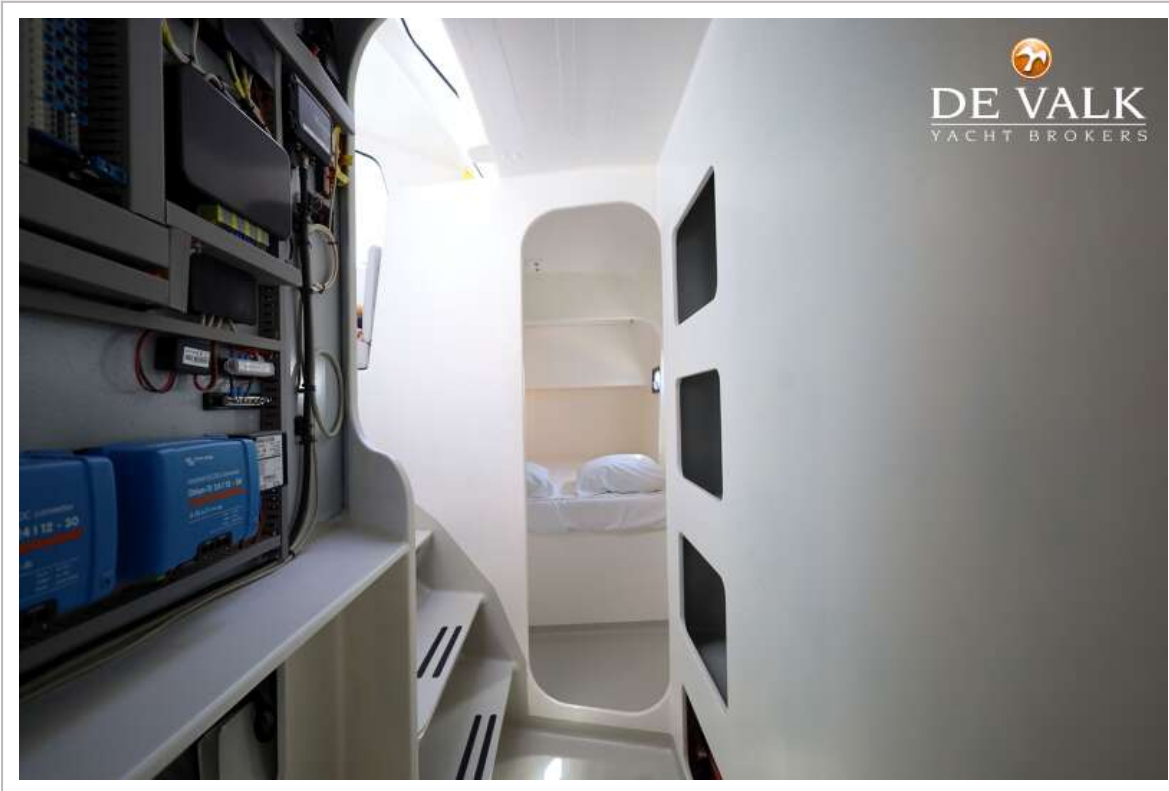


OPTIMUS 45



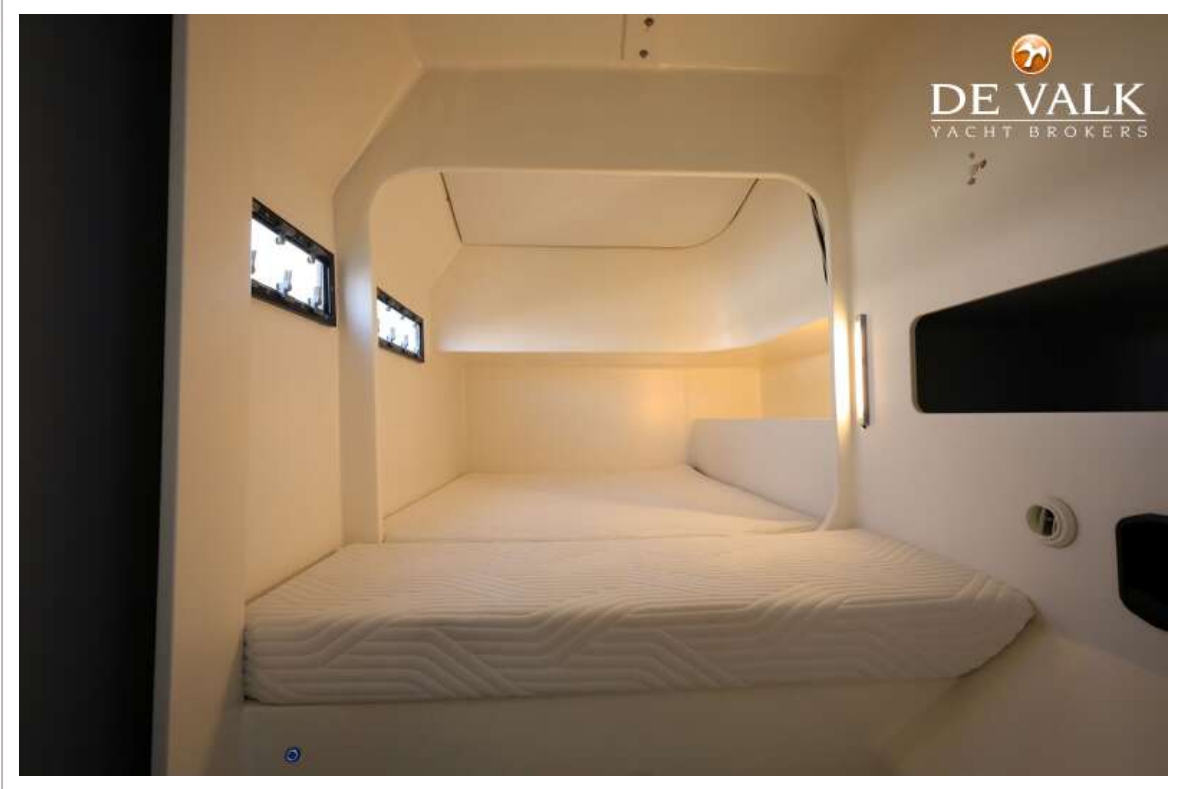


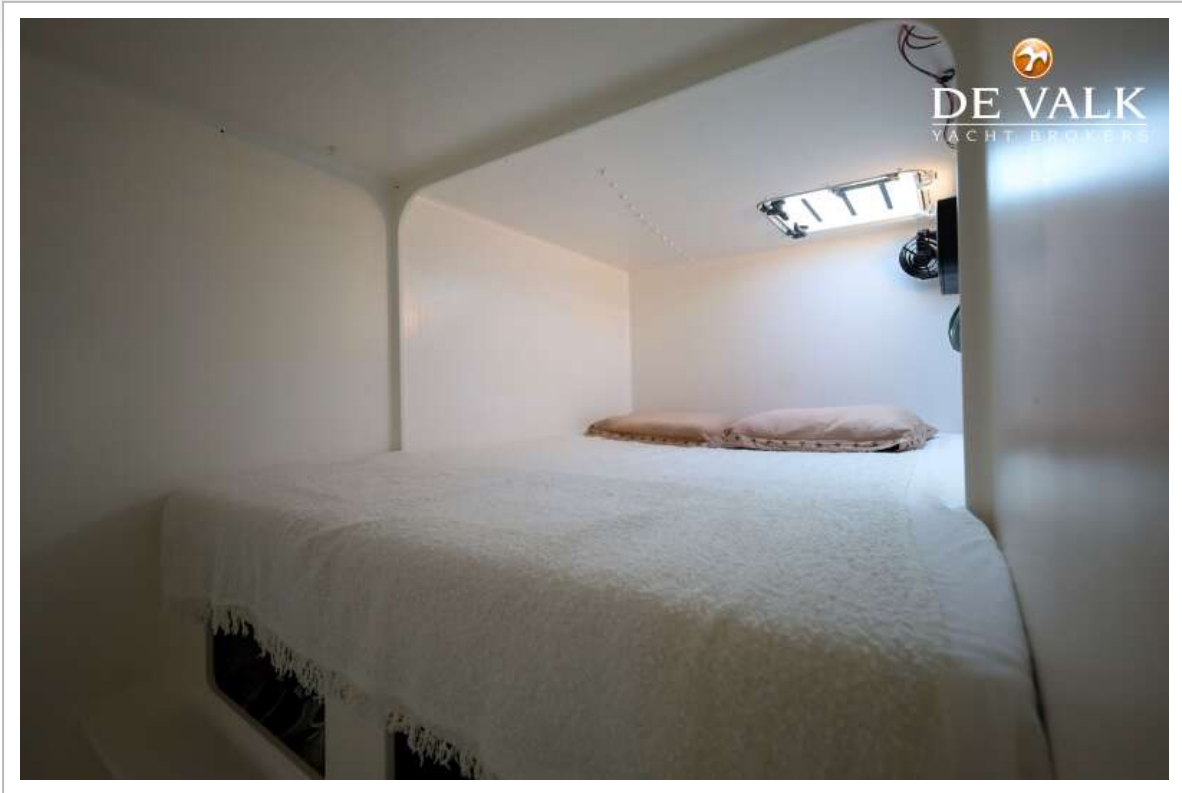
OPTIMUS 45





OPTIMUS 45





OPTIMUS 45



OPTIMUS 45

