



DE VALK
YACHT BROKERS



MARCHI 65 FLY



DE VALK
YACHT BROKERS

MARCHI 65 FLY

BROKER'S COMMENTS

Be surprised by this Marchi 65 Fly, a classic, elegant gentlemen's yacht offering generous living space and comfortable accommodation. Her seakeeping performance is simply exceptional, partly thanks to the reliable and powerful engines. Inside you experience the beautifully maintained, warm and inviting interior, featuring a spacious, light-filled saloon and elegant dining area. The owners' cabin, located forward, is complemented by 2 guest cabins and a crew cabin in the bow. Anti-osmosis treatment and new antifouling completed last October. Viewing this Marchi 65 Fly is highly recommended.

Willem Koopmans

SPECIFICATIONS

Dimensions	19.50 x 5.52 x 1.50 (m)	Builder	Cantiere F.lli Marchi S.n.c.
Built	1996	Cabins	4
Material	GRP	Berths	8
Engine(s)	2 x Caterpillar 3412 diesel	Hp/Kw	2 x 1,250.00 (hp), 920.00 (kw)
Asking price	€ 295.000 (VAT Paid)	Lying	contact sales office

CONTACT

Sales office	De Valk Costa Blanca	Telephone	+34 96 50 21 569
Address	Costa Blanca Region 03730 Javea Alicante ES	E-mail	costablanca@devalk.nl

DISCLAIMER

These particulars are given in good faith as supplied but cannot be guaranteed.



MARCHI 65 FLY

GENERAL

Model	MARCHI 65 FLY
Type	motor yacht
LOA (m)	19,50
Beam (m)	5,52
Draft (m)	1,50
Air draft (m)	6,00
Headroom (m)	2,00
Year built	1996
Launched	2001
Builder	Cantiere F.lli Marchi S.n.c.
Country	Italy
Displacement (t)	29
CE norm	NA
Hull material	GRP
Hull colour	off-white
Hull shape	Fast Displacement Hull
Superstructure material	GRP
Rubbing strake	yes
Deck material	GRP
Deck finish	teak Side decks and fore deck need attention
Superstructure deck finish	non-skid moulded in
Cockpit deck finish	teak
Antifouling (year)	New built-up epoxy and antifouling October 2025
Window frame	stainless steel
Window material	tempered glass
Deckhatch	yes
Flybridge	Access from outside and inside
Flybridge cover	yes
Flybridge cockpit cover	yes
Flybridge suncover	yes



MARCHI 65 FLY

Radar arch	non collapsible
Fuel tank (litre)	stainless steel 2500
Fuel tank 2 (litre)	stainless steel 2500
Level indicator (fuel tank)	yes
Freshwater tank (litre)	1200
Level indicator (freshwater)	yes
Blackwater tank (litre)	320
Greywater tank (litre)	320, new 2024
More info on hull	Heavily built
Extra info	General impression: a classic yacht with style and well kept.

ACCOMMODATION

Cabins	4
Berths	8
Crew cabin	In front (bow)
Crew berths	2
Interior	teak Walnut &
Layout	Owner front cabin, 2 guest more aft, crew seperate, in bow
Floor	parquet Plus teak plus carpet
Open cockpit	yes
Aft deck	yes
Saloon	A proper saloon with giant living space
Headroom saloon (m)	2,1
Heating	Air-conditioning hot/cold
Air-conditioning	One unit, all cabins
Dinette	yes
Sliding door to aft deck	Stainless steel
Galley	yes
Countertop	marble
Sink	stainless steel
Cooker	calor gas Johnson, 4 burner



MARCHI 65 FLY

Microwave	Max
Fridge	Plus one on fly
Freezer	yes
Hot water system	220V + engine Boiler 80 ltr
Water pressure system	electrical
Dishwasher	Bosch
Owners cabin	French bed Front
Wardrobe	hanging/drawers/shelves
Bathroom	en suite Marble floor
Toilet	en suite Plus bidet
Toilet system	electric
Wash basin	in the bathroom
Shower	en suite
Extra info	yes
Guest cabin 1	single bed 2x
Bed length (m)	2
Wardrobe	hanging and shelves
Bathroom	en suite Marble floor
Toilet	en suite
Toilet system	electric Plus bidet
Wash basin	in the bathroom
Shower	en suite
Guest cabin 2	single bed 2x
Bed length (m)	2
Wardrobe	hanging and shelves
Bathroom	Marble floor
Toilet	en suite
Toilet system	electric Plus bidet
Wash basin	in the bathroom
Shower	en suite
Crew cabin(s)	yes
Toilet (crew)	yes



MARCHI 65 FLY

Wash basin	yes
Shower (crew)	yes
Washing machine	yes
Flybridge	yes
Extra info	Most LED lights inside

MACHINERY

No of engines	2
Make	Caterpillar
Type	3412
HP	1250
kW	920
Fuel	diesel
Year installed	1996
Maximum speed (kn)	30
Cruising speed (kn)	7
Consumption (l/hr)	40
Engine hours	1200
Engine cooling system	freshwater heat exchanger
Drive	shaft
Engine controls	electrical & bowden cable Micro commander
Bowthruster	yes
Sternthruster	yes
Propeller type	fixed
Propeller shaft material	stainless steel
Shaft lubrication	water
Electric bilge pump	yes
Generator	Kohler 4 kW
Running hours generator	Ca 320
Batteries	yes
Start battery	New 2024



MARCHI 65 FLY

Service battery	New 2024
Generator battery	yes
Battery charger	yes
Inverter	yes
Shorepower	with cable
Watermaker	Idromar in conserved situation, working needs check

NAVIGATION

Compass	yes
Compass on flybridge	yes
Electric compass	On pilot
Depth sounder/log	Dataline X series
Fish finder	Raytheon V850
VHF	Sailor RT2047
Autopilot	Raypilot 650
Radar	Raytheon XX 4ft scanner on RL9 & R41XX screen
GPS	yes
Plotter/GPS	Geonav 11" Navionics charts & Garmin GPS map 7012
Camera	4
Navigation lights	yes

EQUIPMENT

Fixed windscreen	yes
Bimini	yes
Window cover	yes
Cockpit cushions	Including sunbeds on front / flybridge, all new
Cockpit table	yes
Cockpit chairs	yes
Bathing platform	Large with teak
Boarding ladder	yes
Transom door	yes



MARCHI 65 FLY

Gangway	Hydraulic
Deck shower	yes
Anchor	yes
Anchor chain	yes
Windlass	electrical Lofrans, 2000 Watt/24 Volt
Windlass aft	electrical 2x mooring winches
Dinghy	Joker 3.70
Outboard	Yamaha 25 hp
Deck crane	On flybridge
Sea railing	yes
Life raft	valise (or bag) 2x, 6 persons, one serviced 2025
Life raft (pers)	6
Last life raft survey	2025 and one outdated
Lifejackets	yes
Wiper	yes
Horn	yes
Fenders	yes
Mooring lines	yes
Spare parts	yes
Alarm system	Outdoor and indoor camera's
TV	In saloon and cabins
Radio-cd player	In saloon and cabins
Speakers in salon	yes
Speakers in cabin	yes
Fire extinguisher	yes
Latest extinguisher survey	Green
Extra info	Integrated grill on aft deck
Extra info	Only three owners



MARCHI 65 FLY



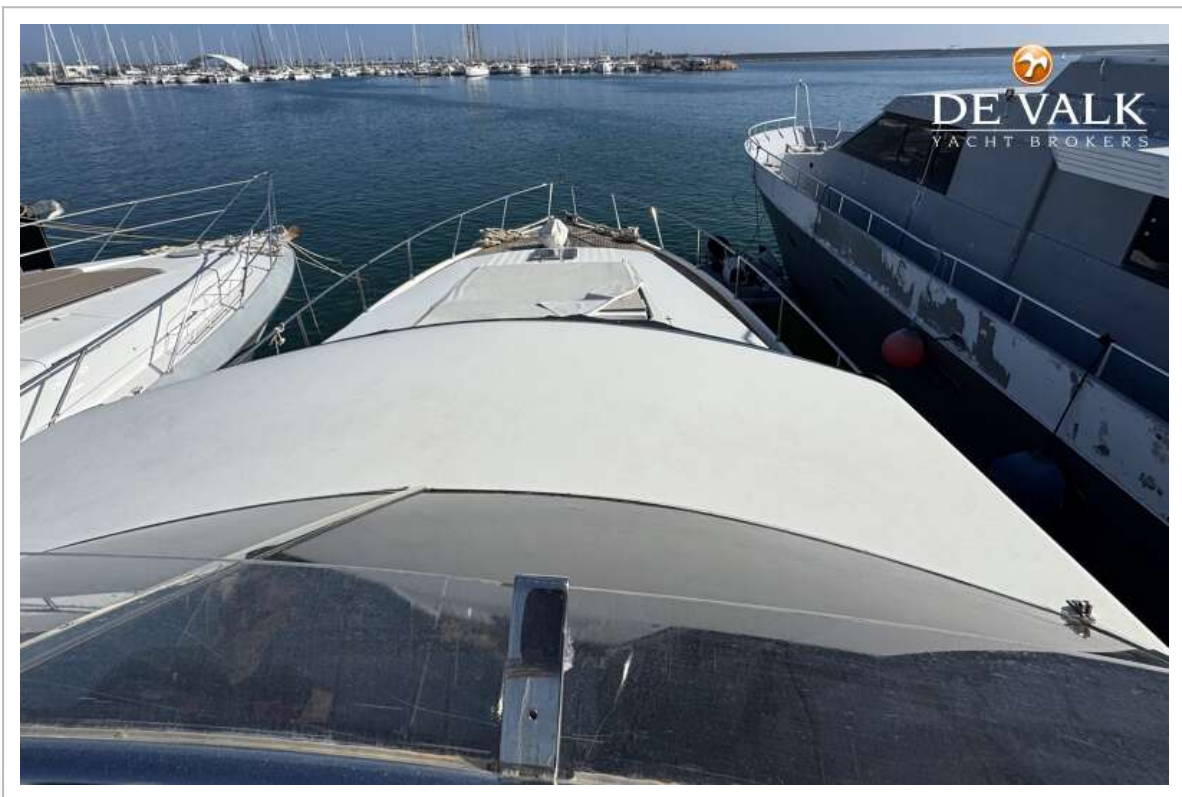
MARCHI 65 FLY



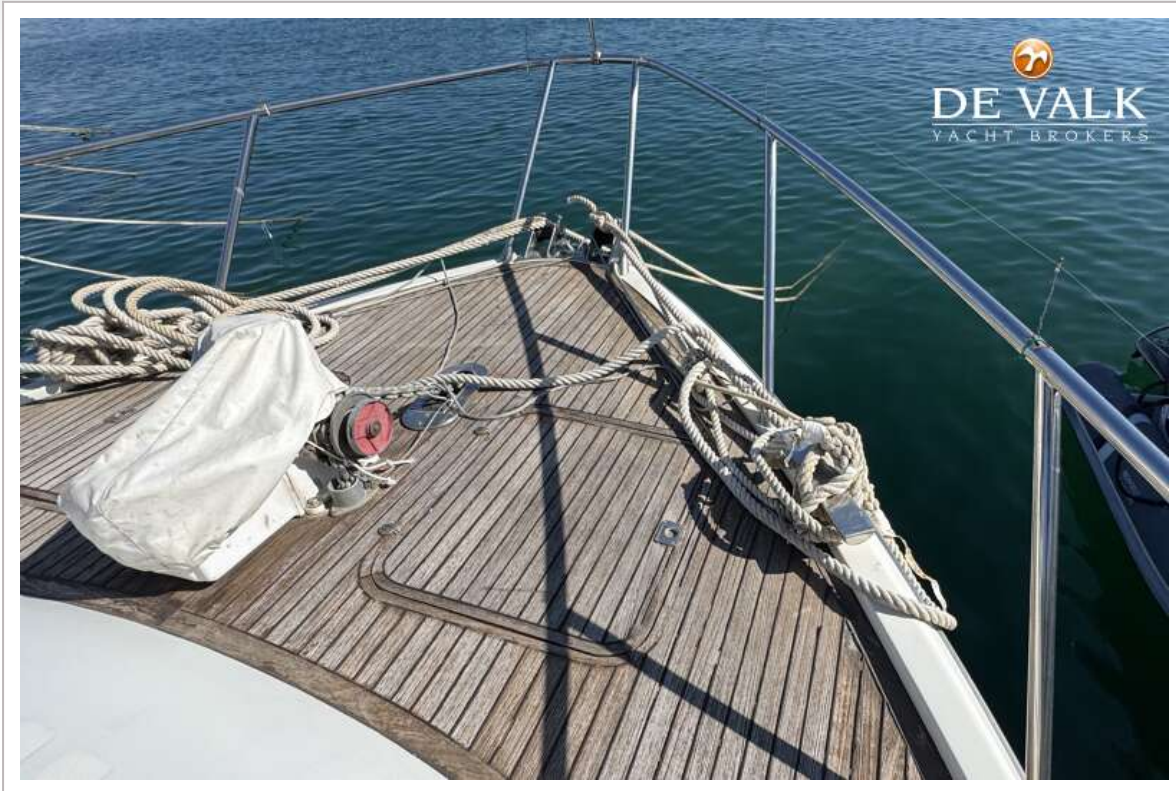
MARCHI 65 FLY



MARCHI 65 FLY



MARCHI 65 FLY



MARCHI 65 FLY



MARCHI 65 FLY



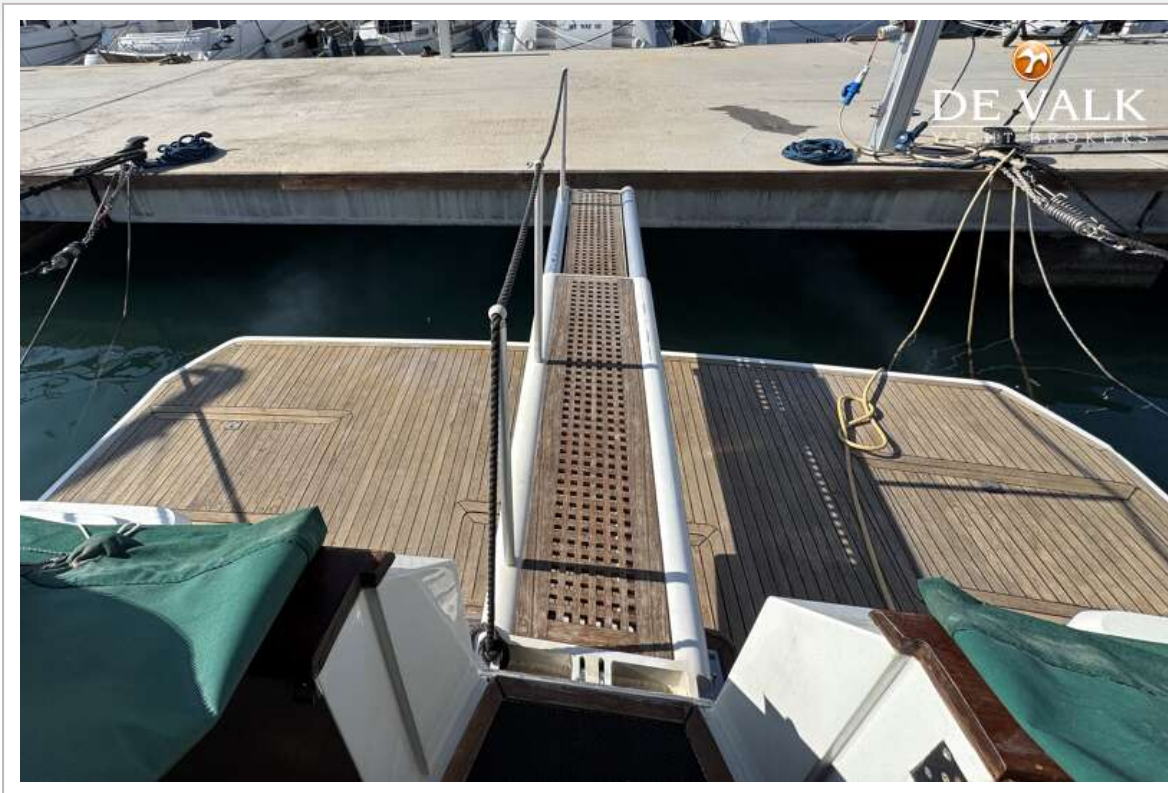
MARCHI 65 FLY



MARCHI 65 FLY



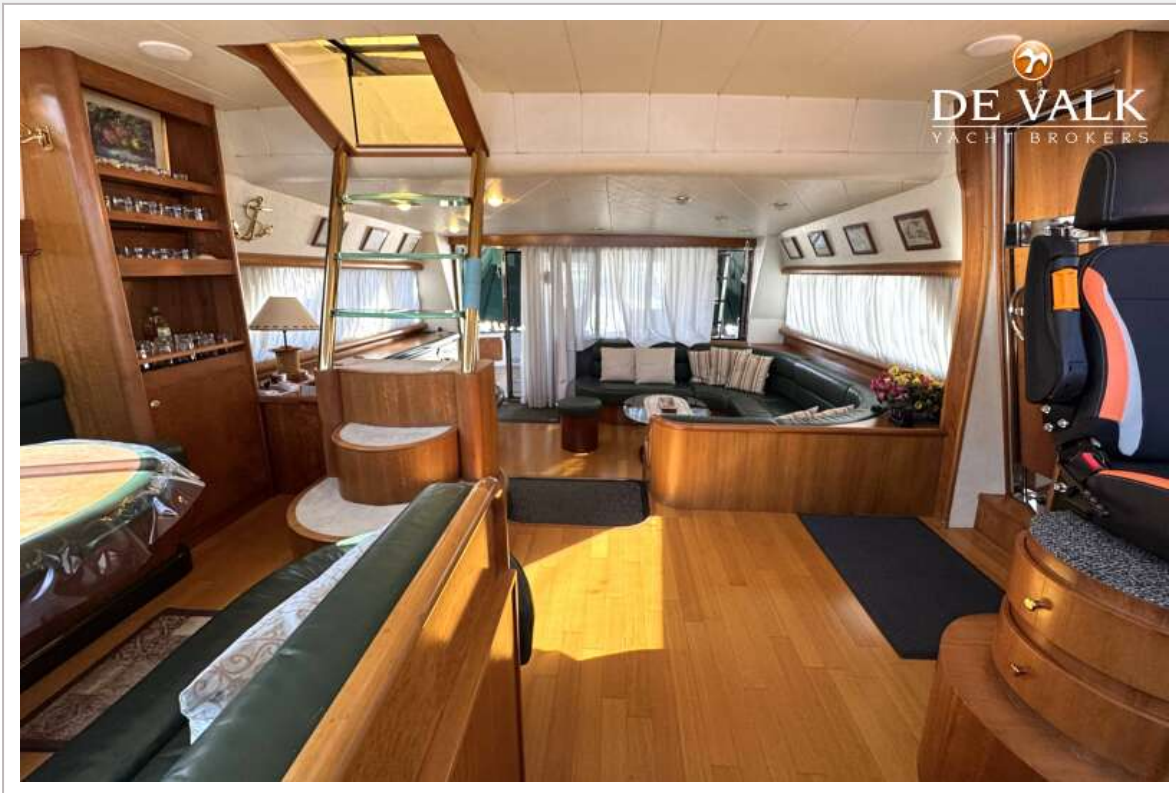
MARCHI 65 FLY



MARCHI 65 FLY



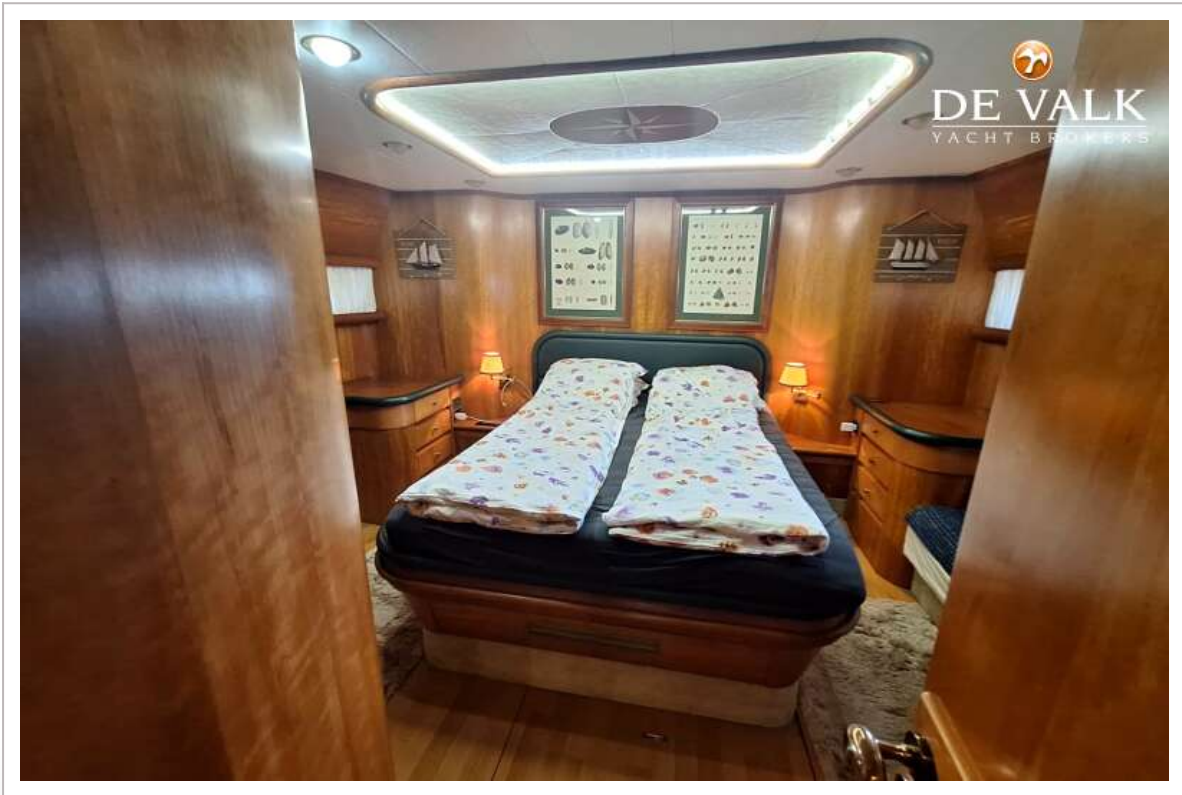
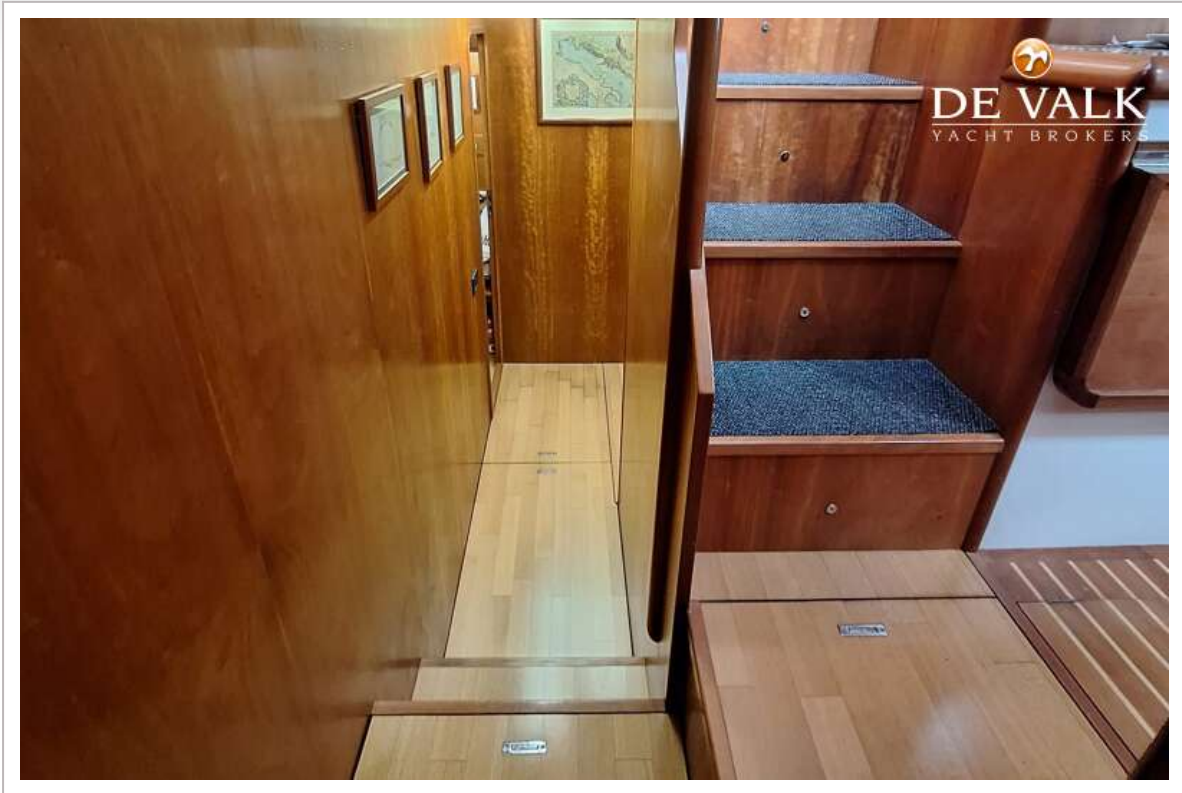
MARCHI 65 FLY



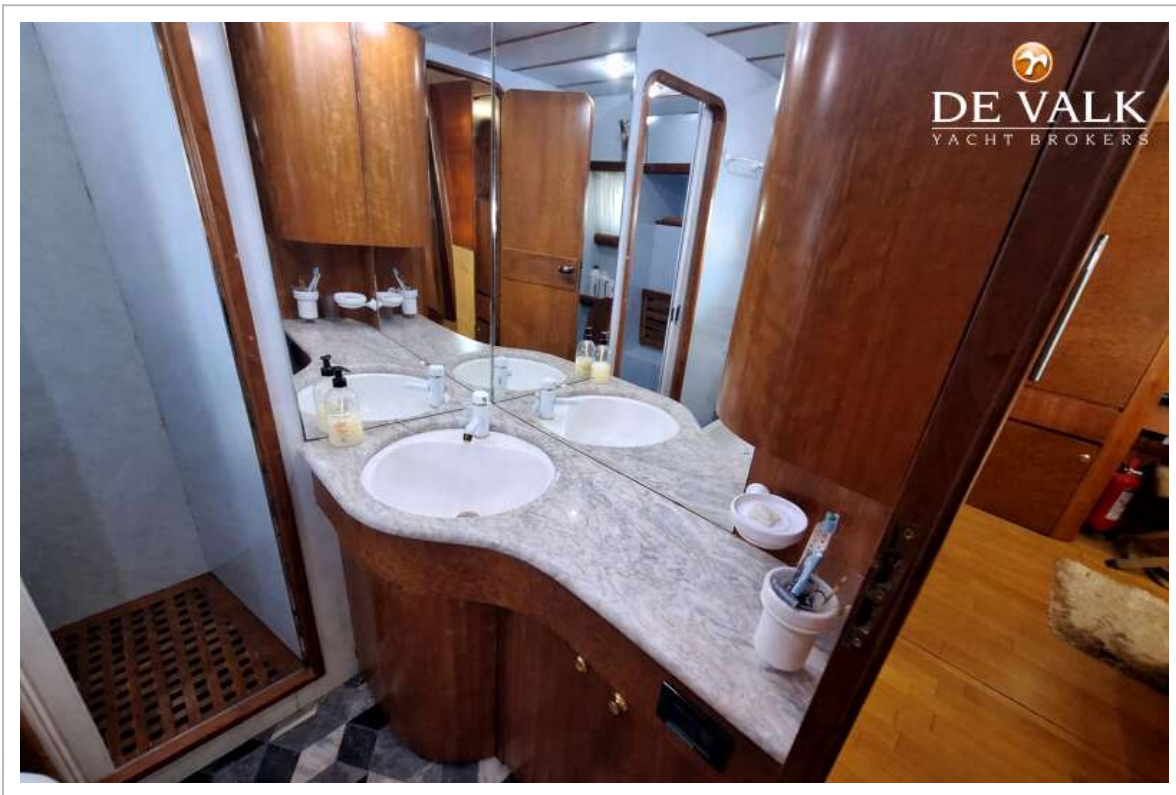
MARCHI 65 FLY



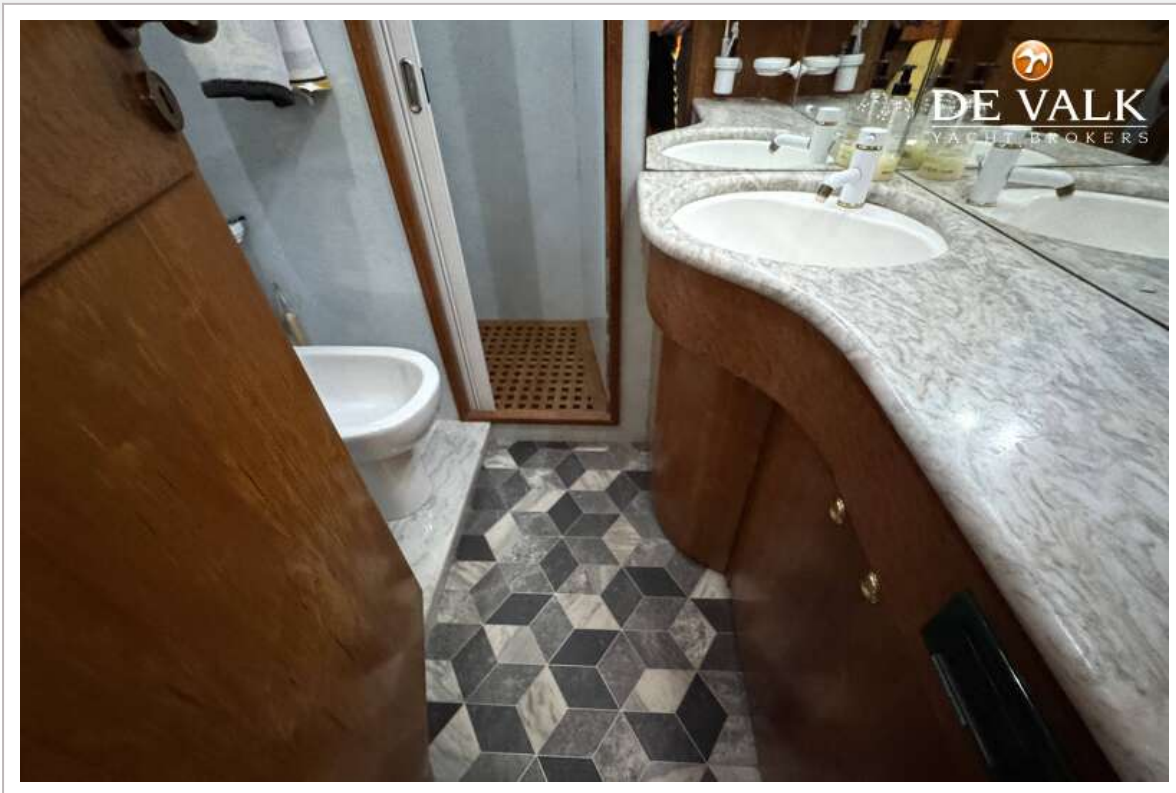
MARCHI 65 FLY



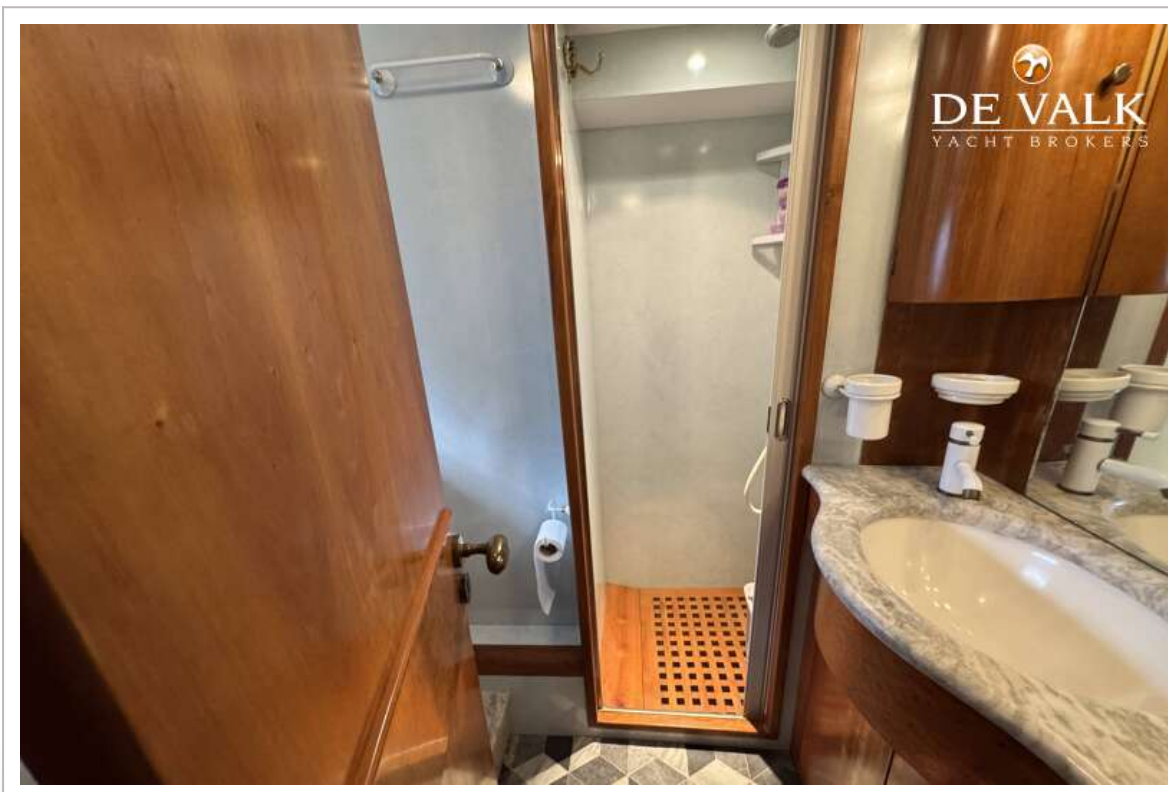
MARCHI 65 FLY



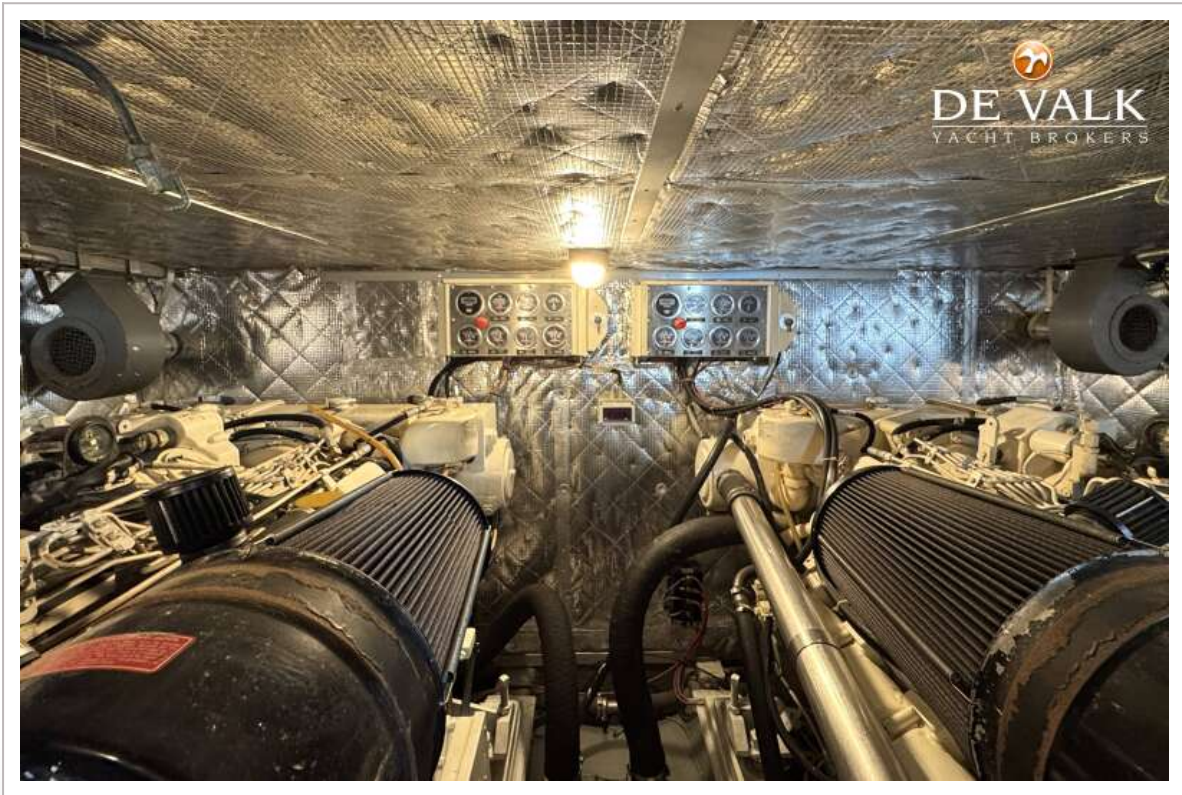
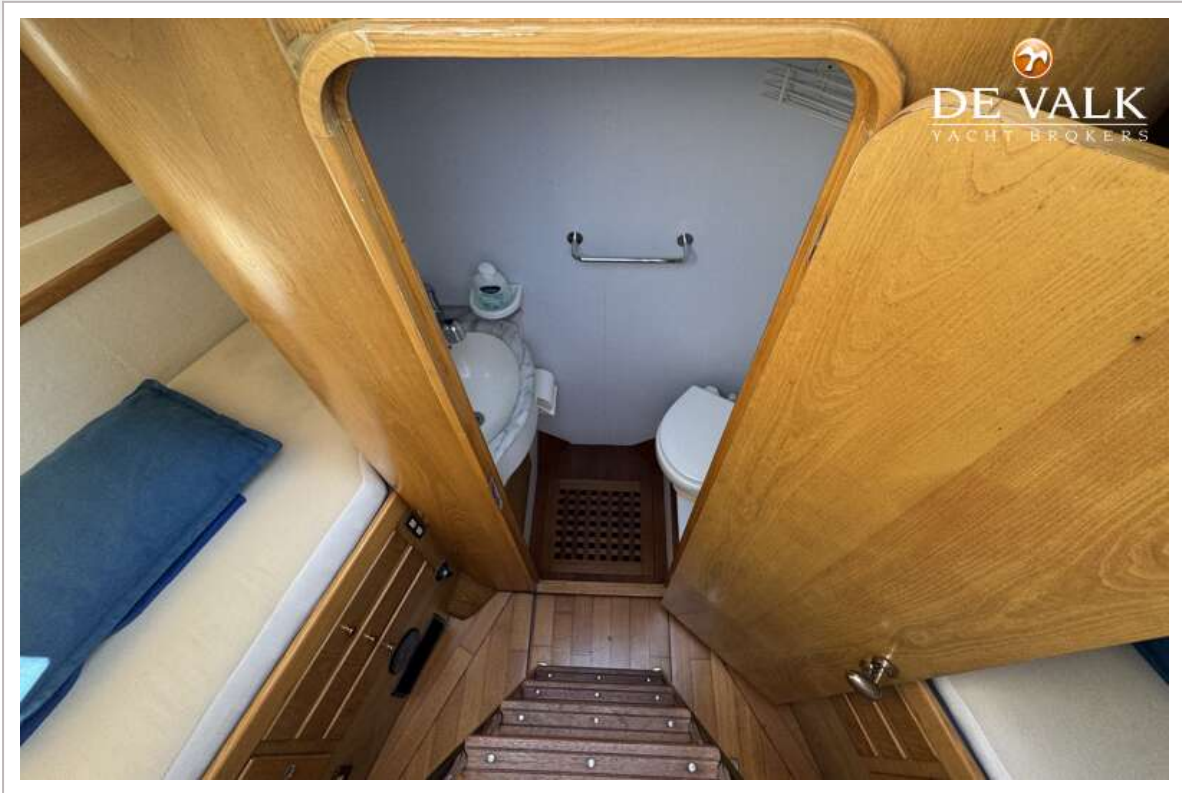
MARCHI 65 FLY



MARCHI 65 FLY



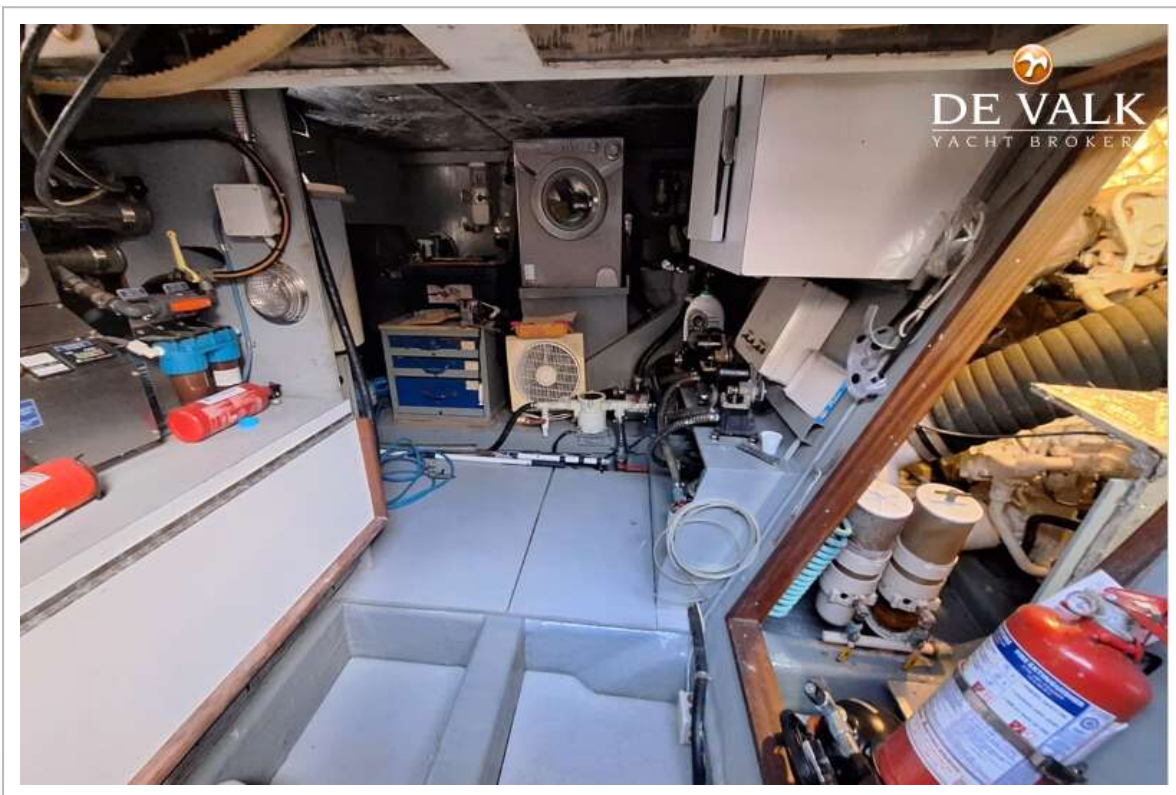
MARCHI 65 FLY



MARCHI 65 FLY



MARCHI 65 FLY



MARCHI 65 FLY

