



DE VALK  
YACHT BROKERS



## SCHOONER CLASSIC GAFF



DE VALK  
YACHT BROKERS

# SCHOONER CLASSIC GAFF

## BROKER'S COMMENTS

S/Y INVADER (1905) is an exceptional classic schooner built by George Lawley & Son and designed by Albert Stanton Cheesebrough. Winner of the Transpac Race, she remains a remarkable performer, with elegant lines and impressive proportions, delivering outstanding light wind performance. Steeped in history, she was part of Hollywood's golden era, hosting icons such as Charlie Chaplin. A rare opportunity to acquire a true icon of classic yachting, combining heritage, elegance and proven pedigree.

*Nico Stillitano*

## SPECIFICATIONS

<b>Dimensions</b>	41.62 x 7.55 x 5.49 (m)	<b>Builder</b>	GEO W.LAWLEY & SONS
<b>Built</b>	1905	<b>Cabins</b>	3
<b>Material</b>	Steel	<b>Berths</b>	6
<b>Engine(s)</b>	1 x Caterpillar 3406E DI-TA diesel	<b>Hp/Kw</b>	700.00 (hp), 515.20 (kw)
<b>Asking price</b>	€ 2.975.000 (VAT Paid)	<b>Lying</b>	Italy

## CONTACT

<b>Sales office</b>	De Valk Rome	<b>Telephone</b>	+39 06 65 81221
<b>Address</b>	c/o Nautilus Marina Srl, Via Monte Cadria, 127  00054 Fiumicino Roma  IT	<b>E-mail</b>	rome@devalk.nl

## DISCLAIMER

These particulars are given in good faith as supplied but cannot be guaranteed.



# SCHOONER CLASSIC GAFF

## GENERAL

<b>Model</b>	SCHOONER CLASSIC GAFF
<b>Type</b>	sailing yacht
<b>LOA (m)</b>	41,62
<b>LWL (m)</b>	28,96
<b>Beam (m)</b>	7,55
<b>Draft (m)</b>	5,49
<b>Year built</b>	1905
<b>Launched</b>	1905
<b>Builder</b>	GEO W.LAWLEY & SONS
<b>Country</b>	U.S.A.
<b>Designer</b>	Albert Stanton Cheesebrough
<b>Displacement (t)</b>	142
<b>CE norm</b>	NA
<b>Hull material</b>	steel
<b>Hull colour</b>	white
<b>Hull shape</b>	deep-V
<b>Keel type</b>	long keel
<b>Superstructure material</b>	wood
<b>Deck material</b>	steel
<b>Deck finish</b>	teak
<b>Superstructure deck finish</b>	teak
<b>Cockpit deck finish</b>	teak
<b>Window frame</b>	brass
<b>Window material</b>	tempered glass
<b>Deckhatch</b>	teak
<b>Fuel tank (litre)</b>	steel
<b>Fuel tank 2 (litre)</b>	steel
<b>Level indicator (fuel tank)</b>	yes
<b>Level indicator (freshwater)</b>	yes
<b>Blackwater tank (litre)</b>	steel



# SCHOONER CLASSIC GAFF

Blackwater tank extraction	pump
Greywater tank (litre)	steel
Wheel steering	hydraulic
Outside helm position	hydraulic

## ACCOMMODATION

Cabins	3
Berths	6
Crew cabin	3
Crew berths	6
Pilot house	yes
Doghouse	yes
Saloon	yes
Air-conditioning	reverse cycle airco
Navigation center	yes
Chart table	yes
Aft Cabin	3
Dining room	yes
Dinette	yes
Galley	yes
Cooker	yes
Oven	yes
Extractor	yes
Gas alarm	yes
Microwave	yes
Fridge	4
Freezer	2
Wine cooler	yes
Hot water system	220V
Water pressure system	electrical
Dishwasher	yes



# SCHOONER CLASSIC GAFF

Ice maker	yes
Coffee maker	yes
Owners cabin	double bed
Wardrobe	hanging/drawers/shelves
Bathroom	en suite 2
Toilet	en suite 2
Toilet system	electric 2
Wash basin	in the bathroom 2
Shower	en suite 1
Guest cabin 1	double bed
Wardrobe	hanging/drawers/shelves
Bathroom	en suite
Toilet	en suite
Toilet system	electric
Wash basin	in the bathroom
Shower	en suite
Guest cabin 2	double bed
Wardrobe	hanging/drawers/shelves
Bathroom	en suite
Toilet	en suite
Toilet system	electric
Wash basin	in the bathroom
Shower	en suite
Crew cabin(s)	3
Bathroom (crew)	3
Toilet (crew)	3
Toilet system	electric
Wash basin	in the bathroom
Shower (crew)	yes
Washing machine	2
Dryer	1



# SCHOONER CLASSIC GAFF

## MACHINERY

No of engines	1
Make	Caterpillar
Type	3406E DI-TA
HP	700
kW	515.20
Fuel	diesel
Year installed	2002
Maximum speed (kn)	12
Cruising speed (kn)	10
Engine hours	3200
Engine cooling system	seawater
Drive	shaft
Shaft seal	yes
Engine controls	electrical & bowden cable
Gearbox	hydraulic
Bowthruster	hydraulic
Sternthruster	hydraulic
Gearbox	hydraulic ZF
Propeller shaft material	stainless steel
Shaft lubrication	water
Electric bilge pump	3
Bilge alarm	yes
Generator	silent separator 2 KOHLER 55 KW
Running hours generator	6431 SN 5452 DX
Generator 2	silent separator KOHLER 17,5 KW
Running hours generator 2	4794
Start battery	4 MAIN ENGINE
Service battery	14 24VOLTS
Navigation Battery	2 12 VOLTS
Generator battery	3



# SCHOONER CLASSIC GAFF

Bowthruster battery	PTO HYDRAULIC
Sternthruster battery	PTO HYDRAULIC
Battery monitor	yes
Battery charger	yes
Inverter	yes
Shorepower	yes
Watermaker	2

## NAVIGATION

Compass	yes
Depth sounder	B&G
Depth sounder/log	B&G
Log	B&G
Windset	B&G
VHF	SAILOR 7224
VHF handheld	SAILOR
Autopilot	SIMRAD
Rudder angle indicator	yes
Radar	FURUNO 48NM
GPS	yes
Plotter	yes
Weather receiver	yes
Navtex	SAILOR 6004
AIS transceiver	KODEN

## EQUIPMENT

Cockpit cushions	yes
Cockpit table	yes
Cockpit chairs	yes
Boarding ladder	yes
Gangway	yes



# SCHOONER CLASSIC GAFF

Anchor	yes
Anchor chain	yes
Anchor 2	yes
Anchor chain	yes
Windlass	yes
Capstan	yes
Deck wash	yes
Dinghy	Dinghy class 12'
Railing side opening gates	yes
TV	yes
TV receiver	yes
Radio-cd player	yes
Cockpit speakers	yes
Speakers in salon	yes
Speakers in cabin	yes
Clock - barometer	yes
Fire extinguisher	yes
Latest extinguisher survey	yes
Extinguisher in engine room	yes

## RIGGING

Rigging	gaff-rig
Standing rigging	wire
Material mast	wood 2
Keel stepped mast	yes
Mainsail	yes
Mainsail cover	yes
Cutterstay	yes
Main staysail	yes
Fisherman staysail	yes
Topsail	yes



# SCHOONER CLASSIC GAFF

Mizzen	yes
Mizzen sailcover	yes
Mizzen staysail	yes
Jib	yes
Jib I	yes
Jib II	yes
Cutter jib	yes
Gennaker	yes
Staysail	yes
Yankee	yes
Primary sheet winch	8 Antal electric
Secondary sheet winch	4 Antal electric
Halyard winches	10 Antal electric
Reefing winch	yes



# SCHOONER CLASSIC GAFF



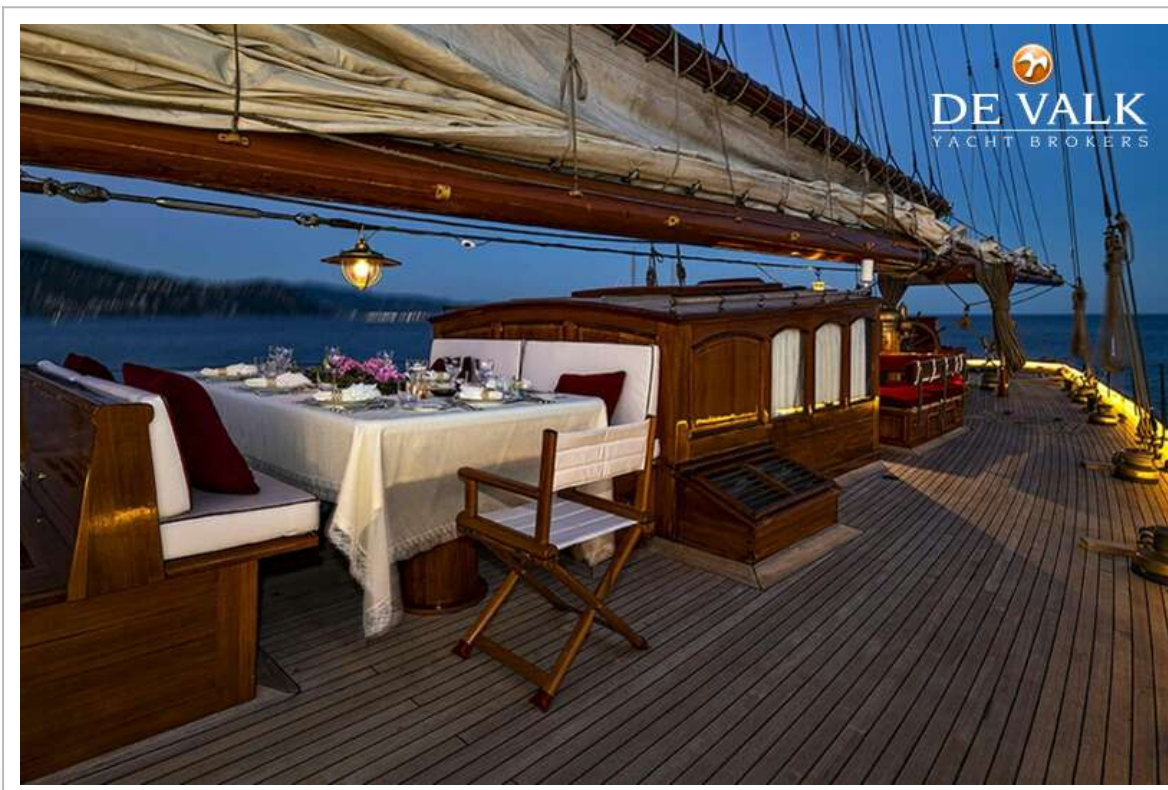
# SCHOONER CLASSIC GAFF



# SCHOONER CLASSIC GAFF



# SCHOONER CLASSIC GAFF



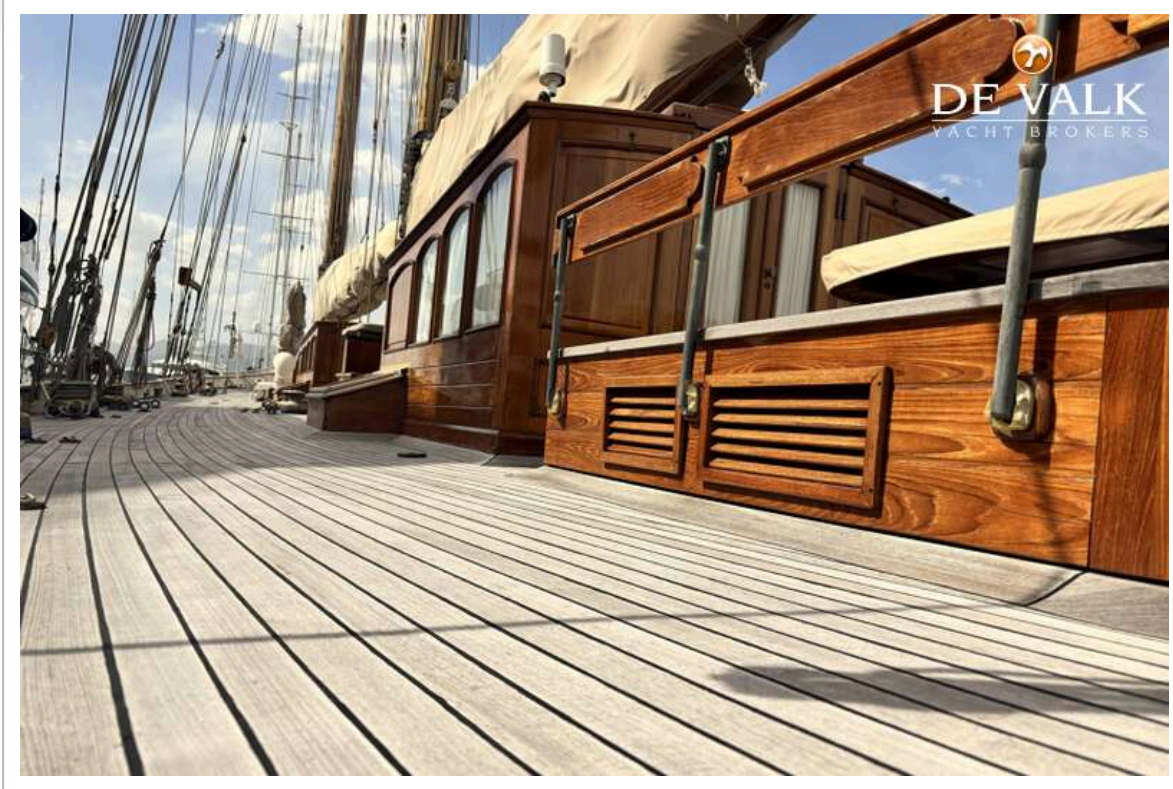
# SCHOONER CLASSIC GAFF



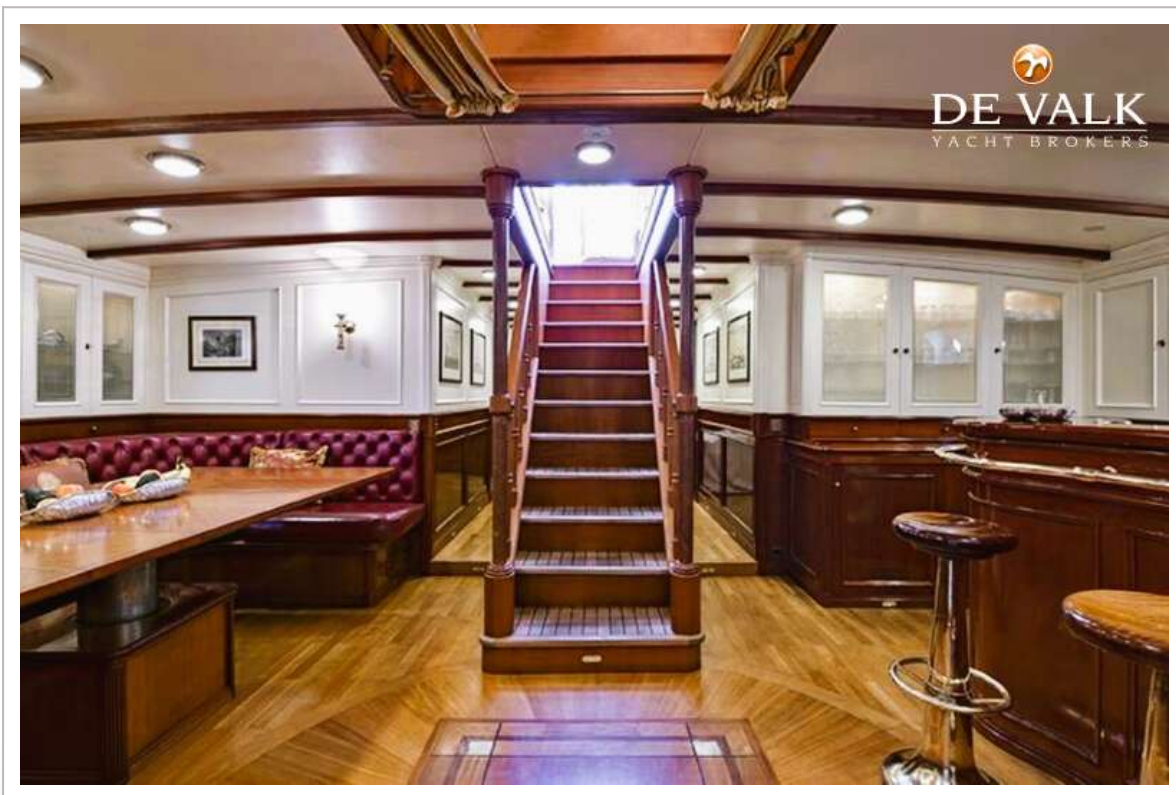
# SCHOONER CLASSIC GAFF



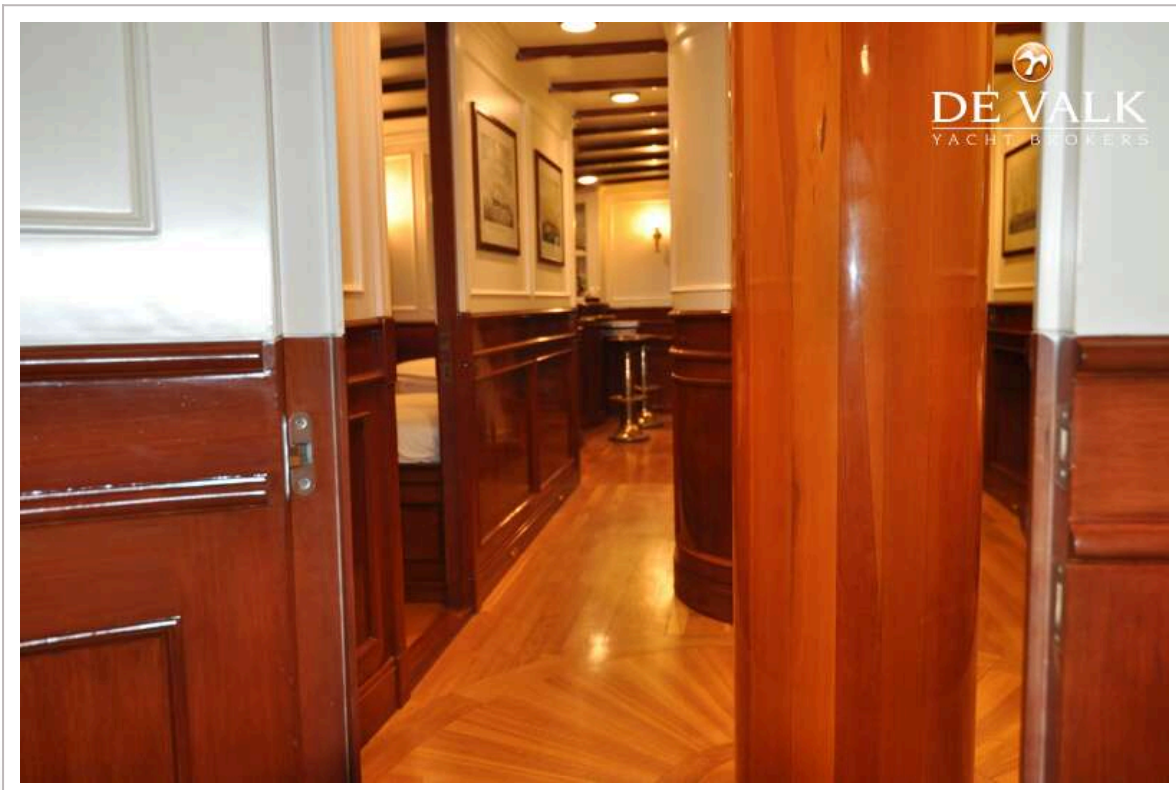
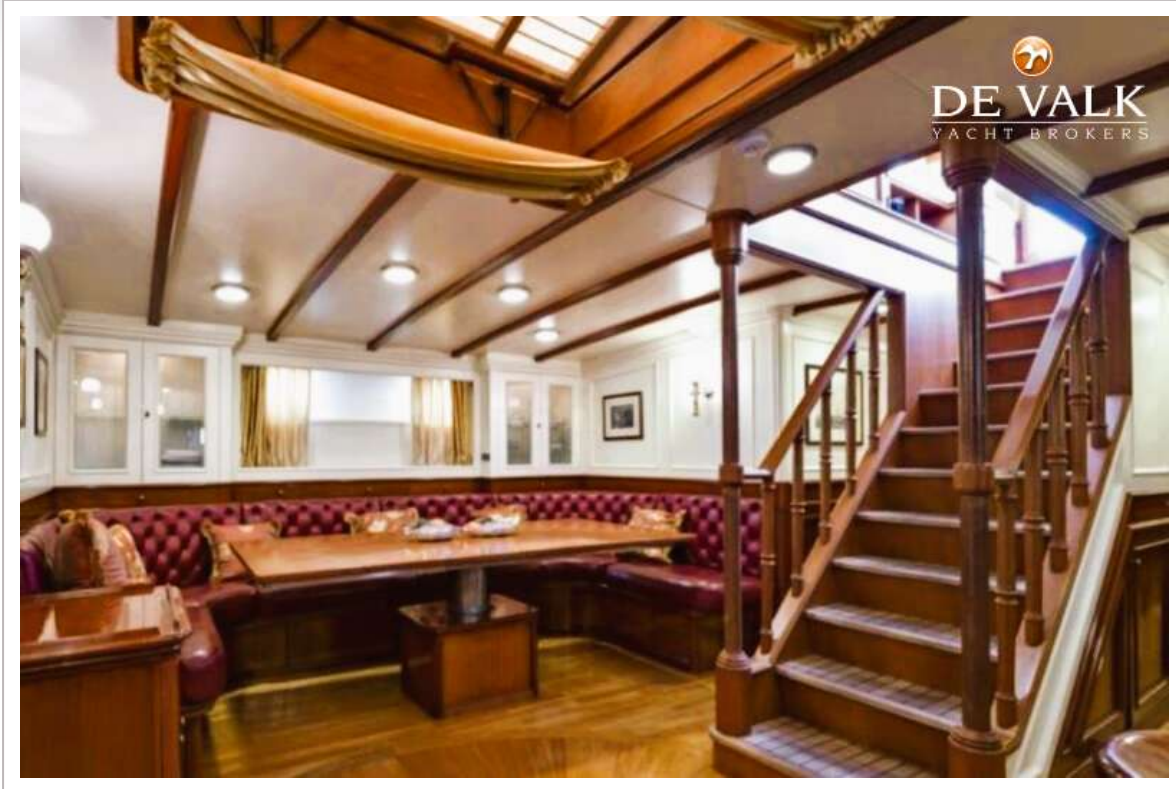
# SCHOONER CLASSIC GAFF



# SCHOONER CLASSIC GAFF



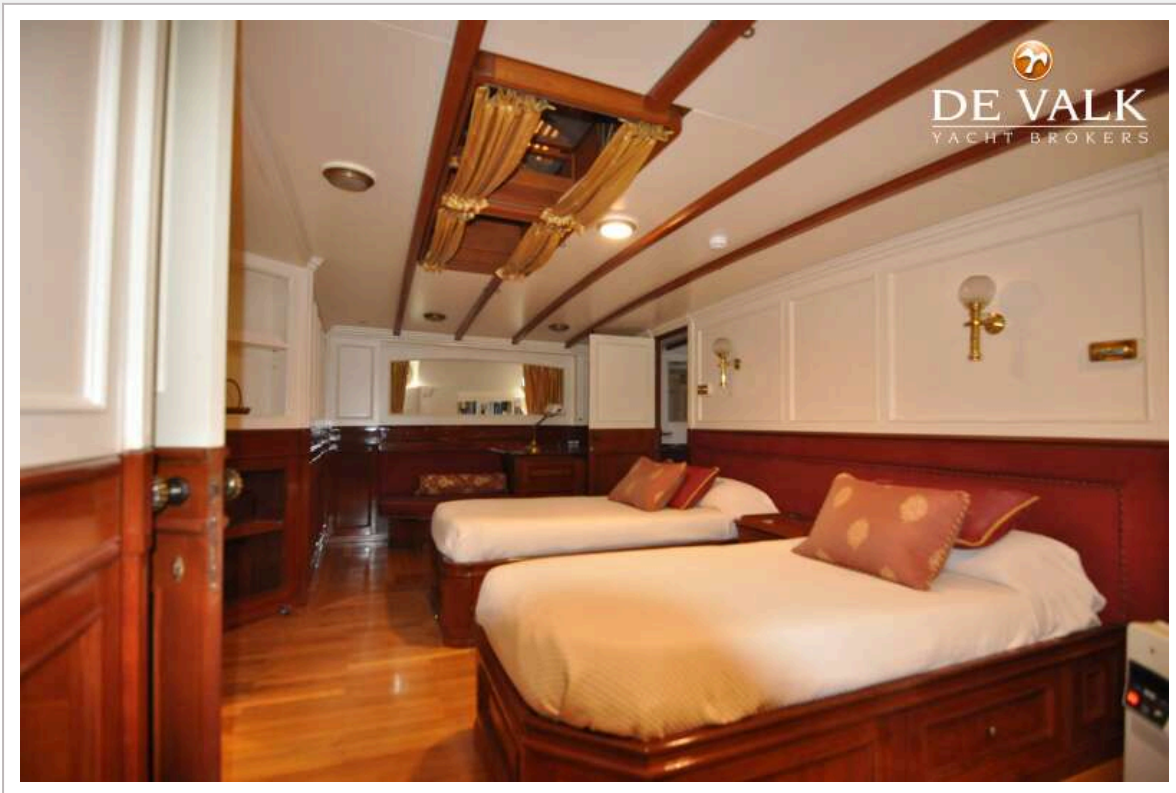
# SCHOONER CLASSIC GAFF



# SCHOONER CLASSIC GAFF



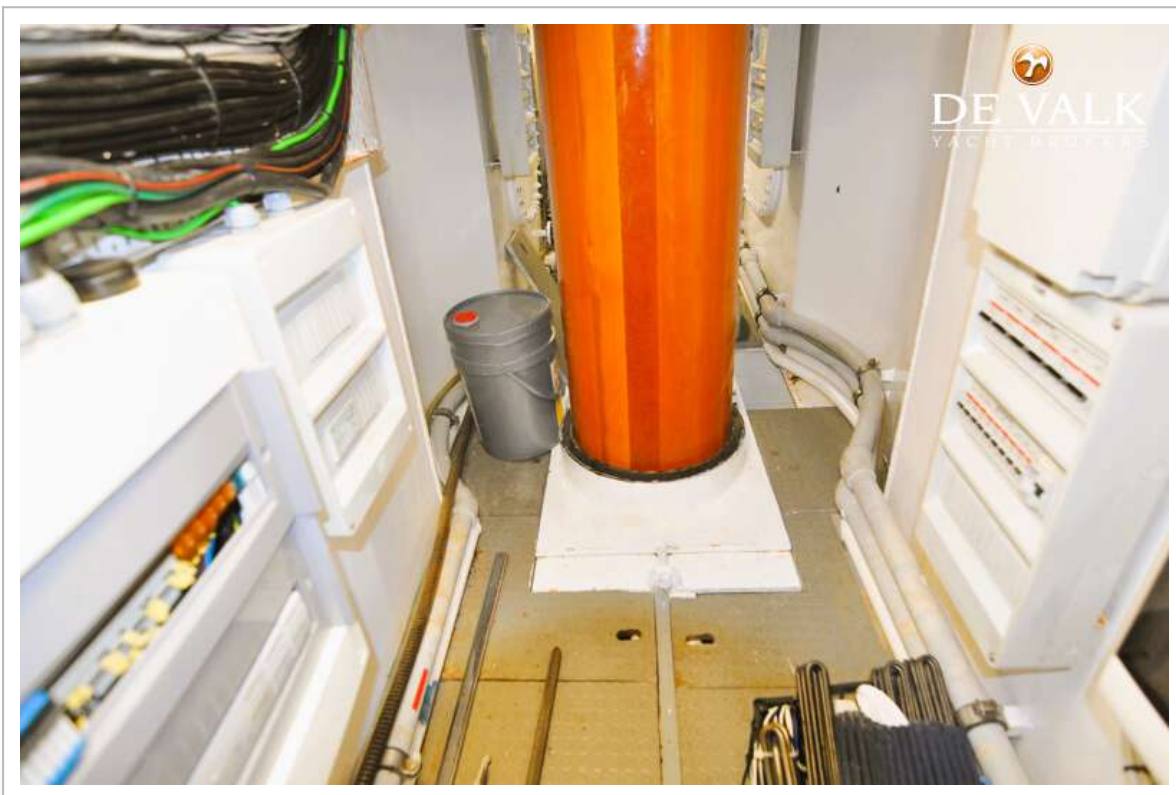
# SCHOONER CLASSIC GAFF



# SCHOONER CLASSIC GAFF



# SCHOONER CLASSIC GAFF



# SCHOONER CLASSIC GAFF

