



DE VALK
YACHT BROKERS



HANSE 415



DE VALK
YACHT BROKERS

HANSE 415

BROKER'S COMMENTS

Birregurra is a very well-maintained and well-equipped owner's version Hanse 415 (no charter & only 1300 engine hours). She is being sold by its first owner and is in very good condition, last services and antifouling January 2026. Extensive B&G navigation equipment at chart table & at steering positions (with 2x Carbon Y-Spoke steering wheel). Carbon self tacking jib and mainsail (2021) and also 2 gennakers, retractable bow thruster and much more. It offers great comfort and is the perfect cruiser for the whole family. Asking price USD 235,000 or nearest offer.

Jeroen Kool

SPECIFICATIONS

Dimensions	12.40 x 4.17 x 2.10 (m)	Builder	Hanse Yachts
Built	2016	Cabins	2
Material	GRP	Berths	4
Engine(s)	1 x Volvo Penta D2-55F diesel	Hp/Kw	53.00 (hp), 39.01 (kw)
Asking price	\$ 225.000 (VAT Not paid)	Lying	Malaysia

CONTACT

Sales office	De Valk Asia	Telephone	0601114078055
Address		E-mail	asia@devalk.nl
	AS		

DISCLAIMER

These particulars are given in good faith as supplied but cannot be guaranteed.



GENERAL

Model	HANSE 415
Type	sailing yacht
LOA (m)	12,40
LWL (m)	11,40
Beam (m)	4,17
Draft (m)	2,10
Air draft (m)	19,60
Headroom (m)	2,00
Year built	2016
Launched	2017
Builder	Hanse Yachts
Country	Germany
Designer	Judel & Vrolijk
Displacement (t)	9
Ballast (tonnes)	lead 2,9
Net tonnage	8,9
CE norm	A
Hull material	GRP
Hull colour	white
Hull shape	round-bilged
Keel type	fin keel with bulb
Superstructure material	GRP
Deck material	GRP
Deck finish	synthetic teak
Superstructure deck finish	non-skid moulded in
Cockpit deck finish	synthetic teak
Antifouling (year)	2026
Window frame	aluminium
Window material	polycarbonate
Deckhatch	yes



Portholes	yes
Fuel tank (litre)	polyethylene 160
Level indicator (fuel tank)	yes
Freshwater tank (litre)	polyethylene 320+180, total 500
Level indicator (freshwater)	yes
Blackwater tank (litre)	polyethylene 35
Wheel steering	cable steering Jefa steering
Emergency tiller	yes

ACCOMMODATION

Cabins	2
Berths	4
Interior	cherry American
Floor	woodprint
Saloon	yes
Headroom saloon (m)	2
Air-conditioning	reverse cycle airco Climma
Navigation center	yes
Chart table	yes
Aft Cabin	yes
Convertible berth	2x
Galley	yes
Countertop	corian
Sink	stainless steel Double
Cooker	calor gas 2 burner
Oven	Calor gas
Gas alarm	yes
Fridge	Top and side load, Isotherm
Hot water system	220V + engine
Water pressure system	electrical Jabsco with accumulator
Kettle	yes



Hot water tap	yes
Crockery	yes
Owners cabin	double bed
Bed length (m)	2
Wardrobe	hanging and shelves
Bathroom	separate
Toilet	separate
Toilet system	manual
Wash basin	in the cabin Foldable
Shower	separate
Guest cabin 1	double bed
Bed length (m)	2
Wardrobe	hanging and shelves

MACHINERY

No of engines	1
Make	Volvo Penta
Type	D2-55F
HP	53
kW	39.01
Fuel	diesel
Year installed	2016
Maximum speed (kn)	9
Cruising speed (kn)	7
Consumption (l/hr)	3
Range (nm)	400
Engine hours	1310
Engine cooling system	freshwater heat exchanger
Drive	sail-drive
Saildrive seal	2025
Shaft seal	2025



Engine controls	bowden cable
Gearbox	mechanical
Bowthruster	electric Quick BTR 185 4,3kW
Propeller type	folding Gori prop overdrive
Propeller blades	3
Manual bilge pump	yes
Electric bilge pump	2 fixed, 1 portable
Bilge alarm	yes
Start battery	Varta AGM 95 Ah (2022)
Service battery	Blue River 3x AGM 115 Ah (345 Ah) (2021)
Bowthruster battery	Varta AGM 95 Ah (2023)
Battery monitor	B&G Czone, paired with Zeus
Battery charger/inverter	Mastervolt 1600 kW
Solar panel	100 Watt
Shorepower	with cable Incl 3 fittings (16, 32 and 64 Amps)
Extra info	Cruising speed 7+ kn at 1600 RPM when Gori prop in overdrive

NAVIGATION

Compass	Garmin
Multi control display	B&G
Depth sounder/log	yes
Forw. looking depth sounder	B&G
Windset	B&G WS 320
VHF	B&G, V50
VHF handheld	B&G, H50
Autopilot	B&G, NAC-3
Plotter/GPS	2x B&G 12" Zeus paired to Czone
Electronic chart(s)	yes
AIS transponder	B&G with dedicated antenna
Navigation lights	Deck + mast top Lopo



EQUIPMENT

Sprayhood	yes
Sun awning	yes
Cockpit cushions	yes
Cockpit table	yes
Bathing platform	yes
Boarding ladder	stainless steel
Deck shower	yes
Anchor	Manson Boss NZ 20kg
Anchor chain	60m 8mm stainless
Anchor 2	Bruce
Windlass	electrical Quick incl remote control
Sea railing	wire
Grab rail (superstructure)	stainless steel
Railing side opening gates	SB & Port
Life raft	Viking, bag
Life raft (pers)	6
Last life raft survey	Require servicing
Lifejackets	Talamex 275N 4x, Lalizas 170N 6x, Rooster buoyancy 3x
Fenders	yes
Mooring lines	yes
Spare parts	yes
Tools	yes
Radio	JL Audio
Surround Sound System	yes
Cockpit speakers	yes
Speakers in salon	yes
Clock - barometer	yes
Fire extinguisher	yes

RIGGING



Rigging	fractional
Standing rigging	wire
Brand mast	Seldén
Material mast	aluminium
Spreaders	2 pair
Mainsail	Carbon 2021
Mainsail cover	yes
Battcars	yes
Jib	Carbon 2021
Genoa furler	Furlex 304S
A-symmetric spi	A3 in sock 2023, A1 in sock 2018
Self tacking jib installation	yes
Reefing System	slabreefing From cockpit
Backstay adjuster	tackle
Boomvang	gasspring
Primary sheet winch	Lewmar 45 electric
Secondary sheet winch	Lewmar 45
Winchcovers	yes



HANSE 415



HANSE 415



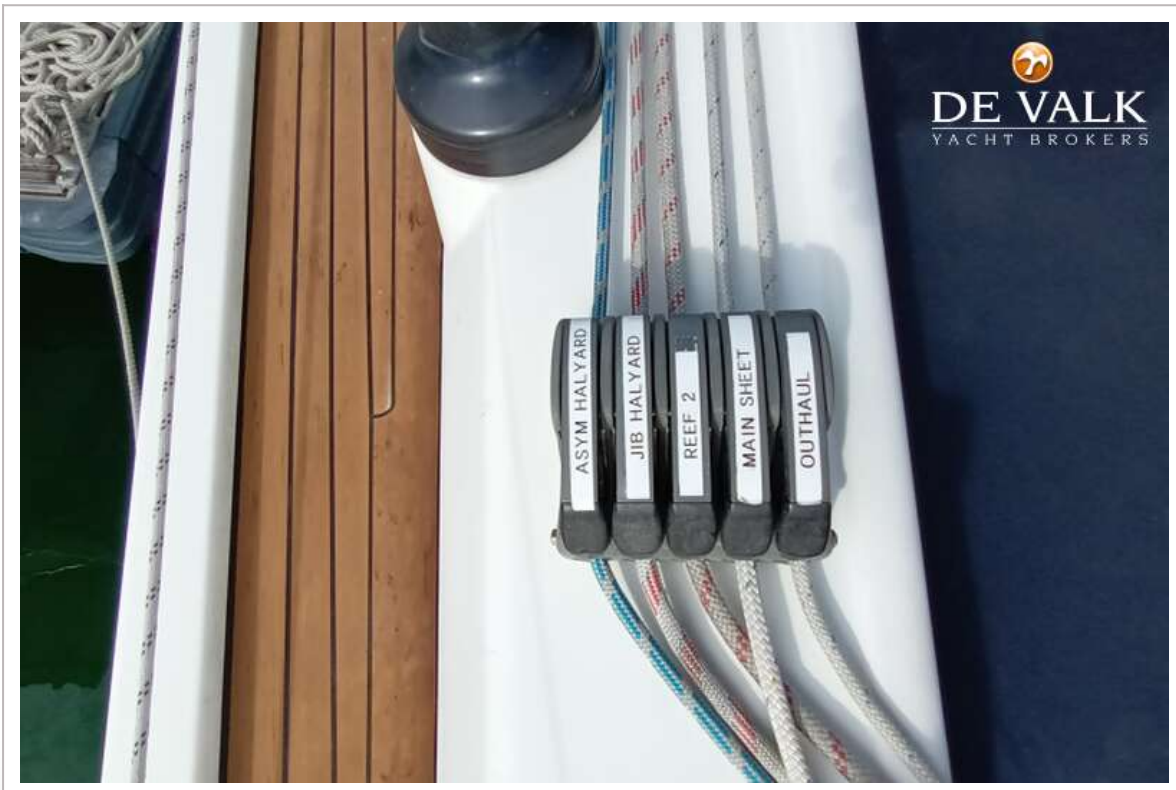
HANSE 415



HANSE 415



HANSE 415



HANSE 415



HANSE 415



HANSE 415



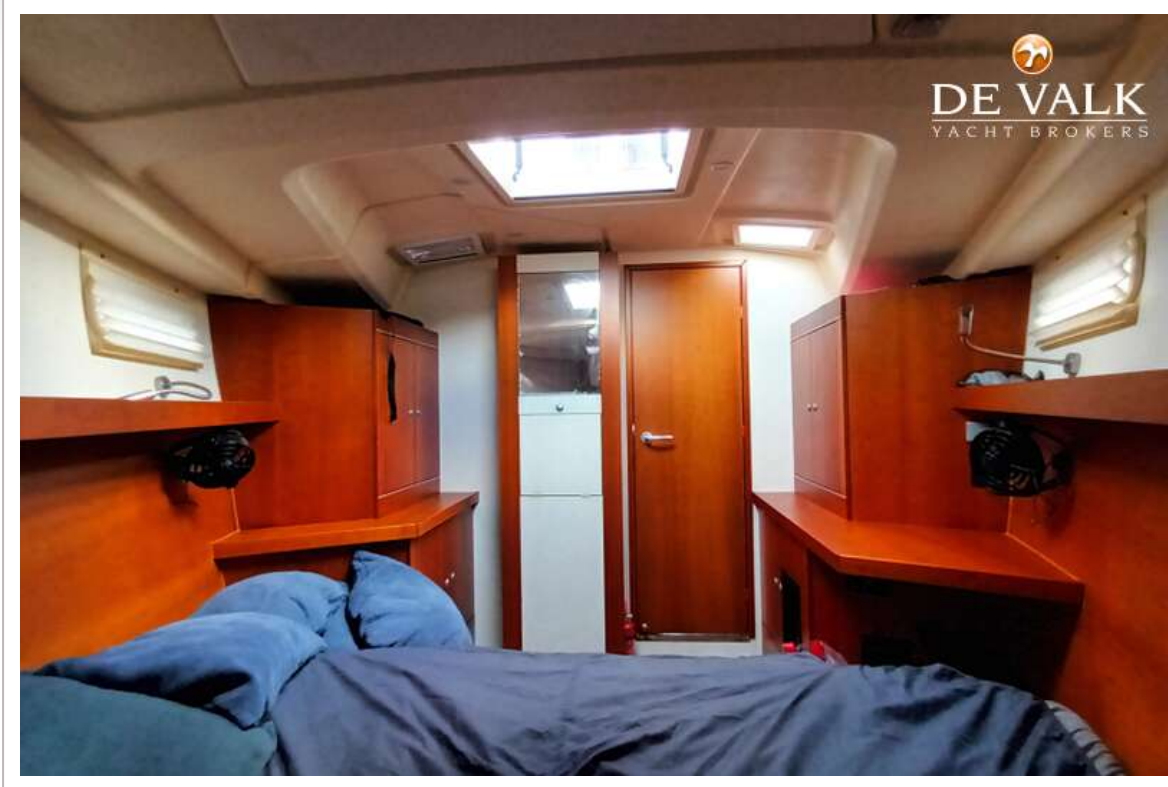
HANSE 415



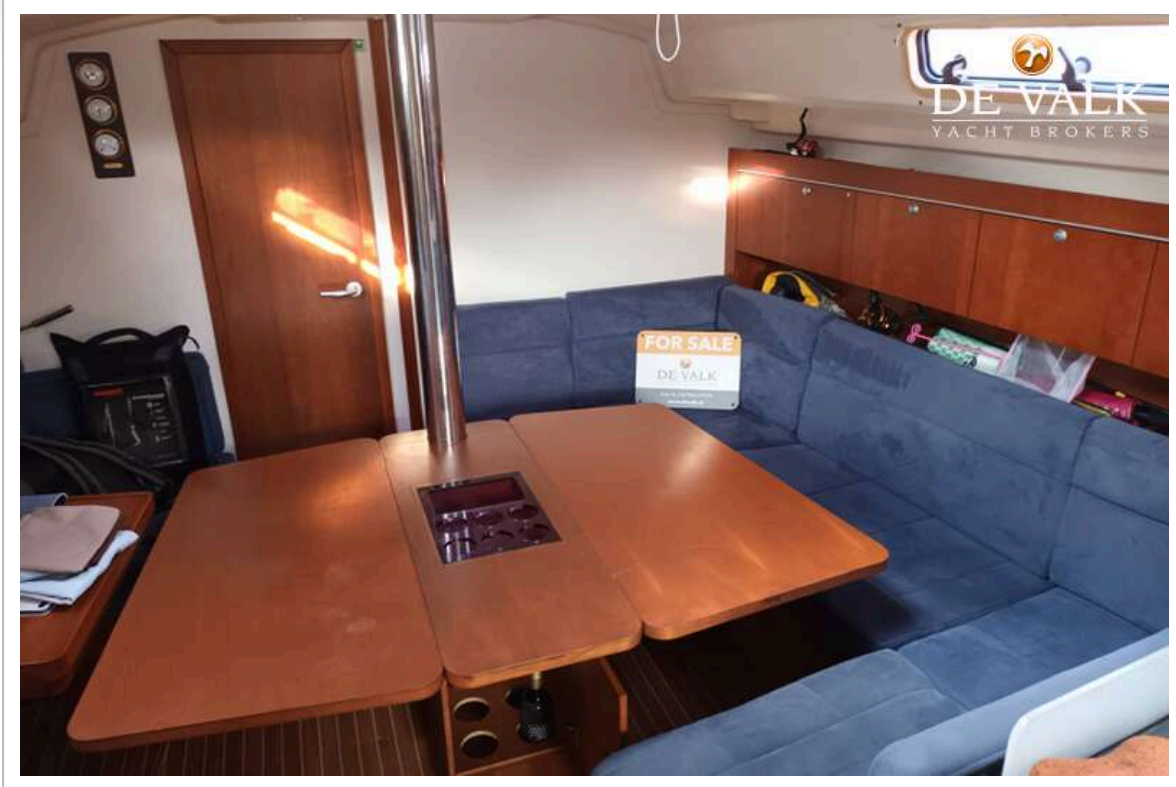
HANSE 415



HANSE 415



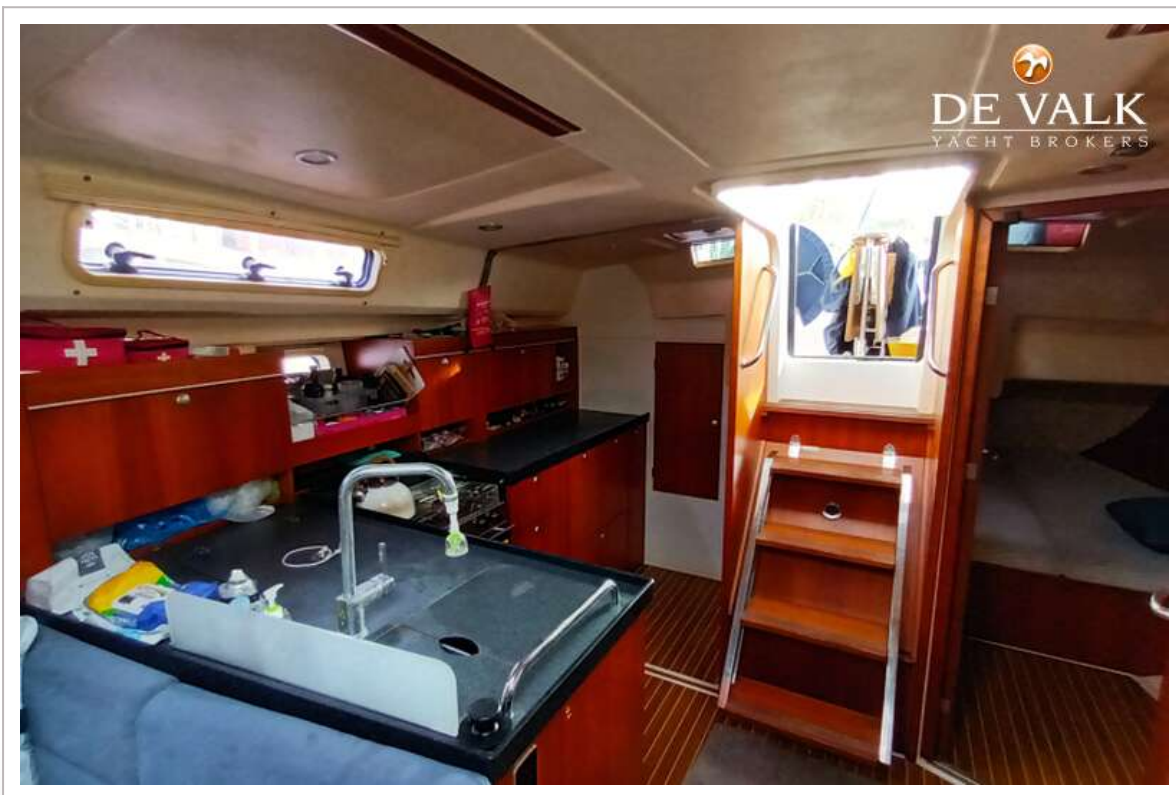
HANSE 415



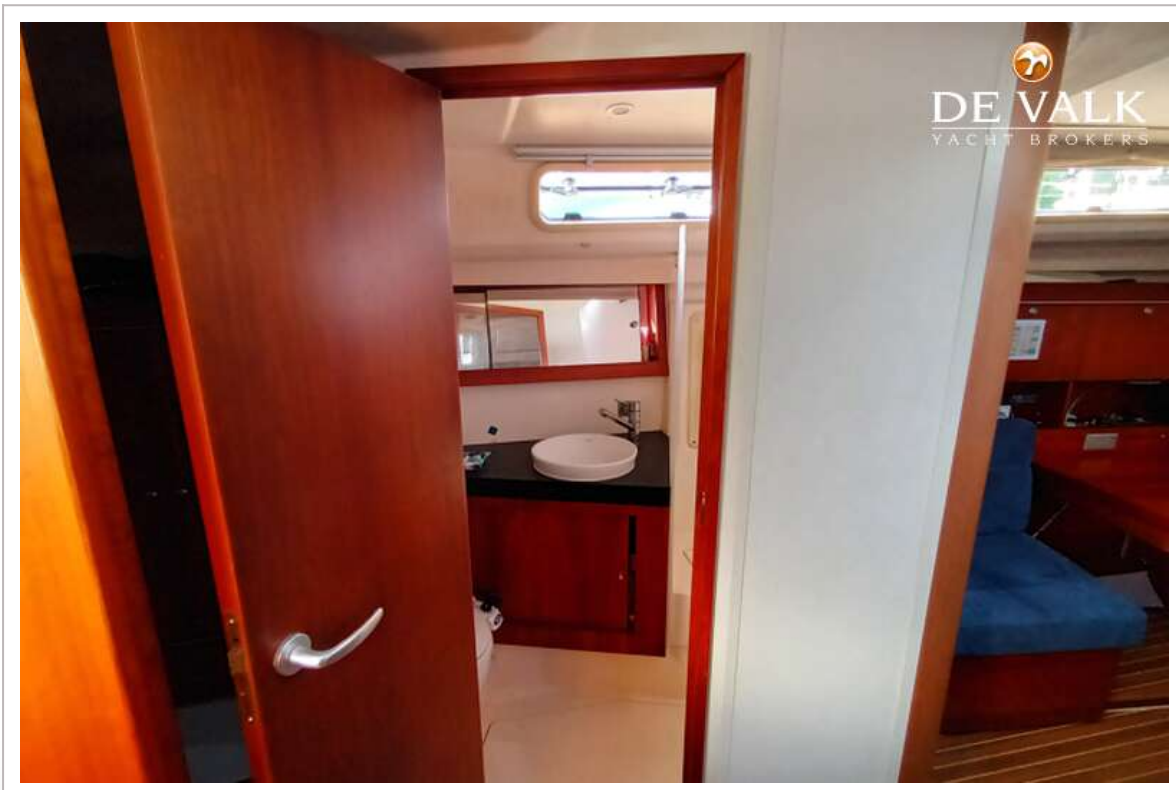
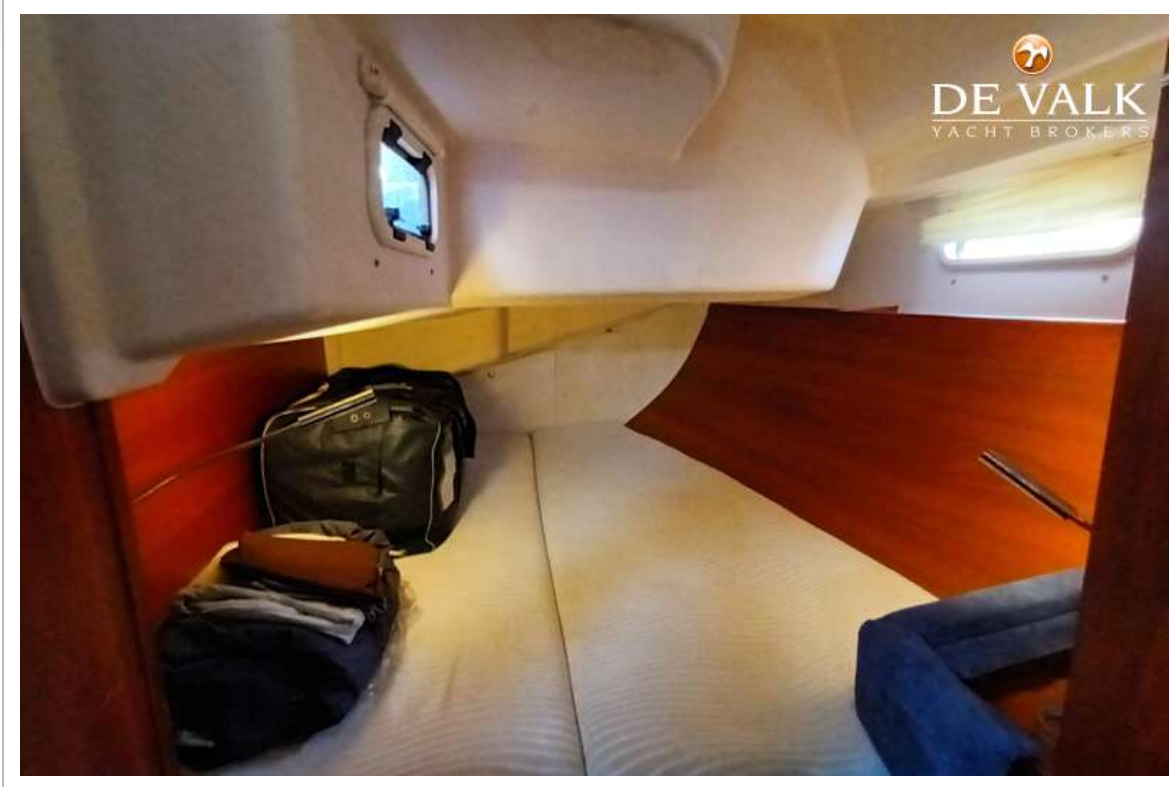
HANSE 415

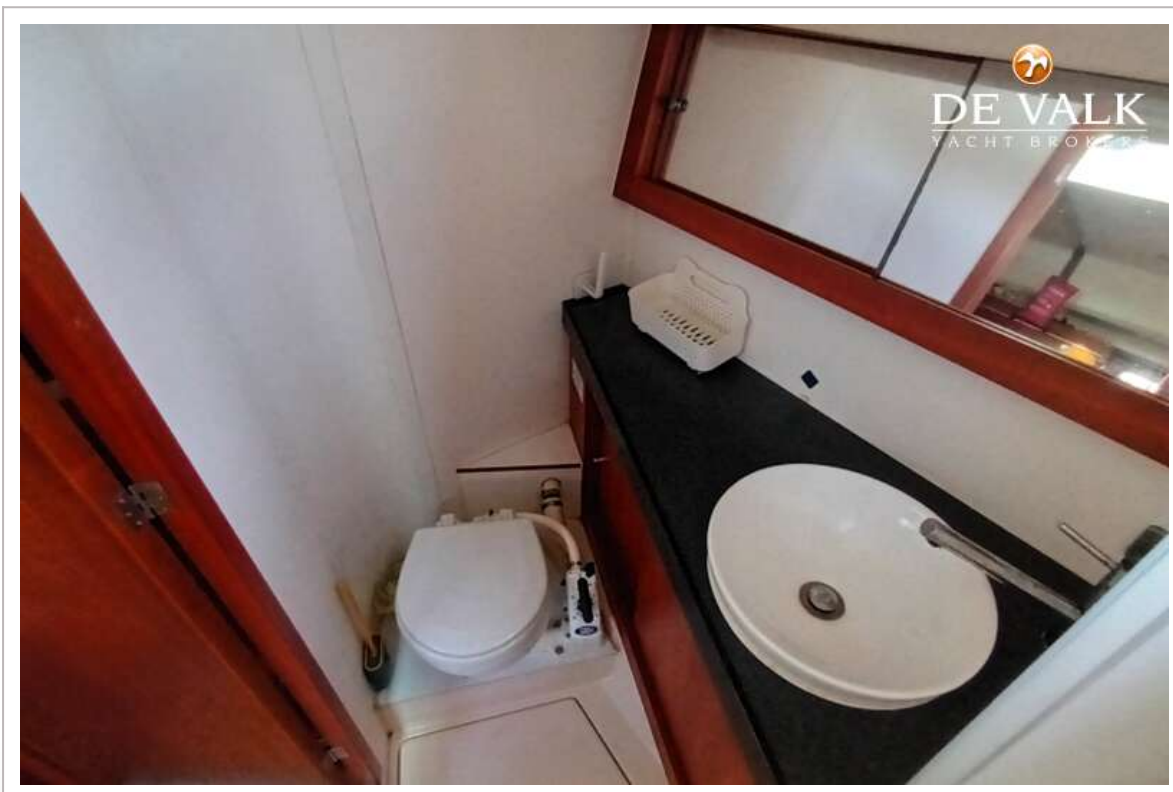


HANSE 415

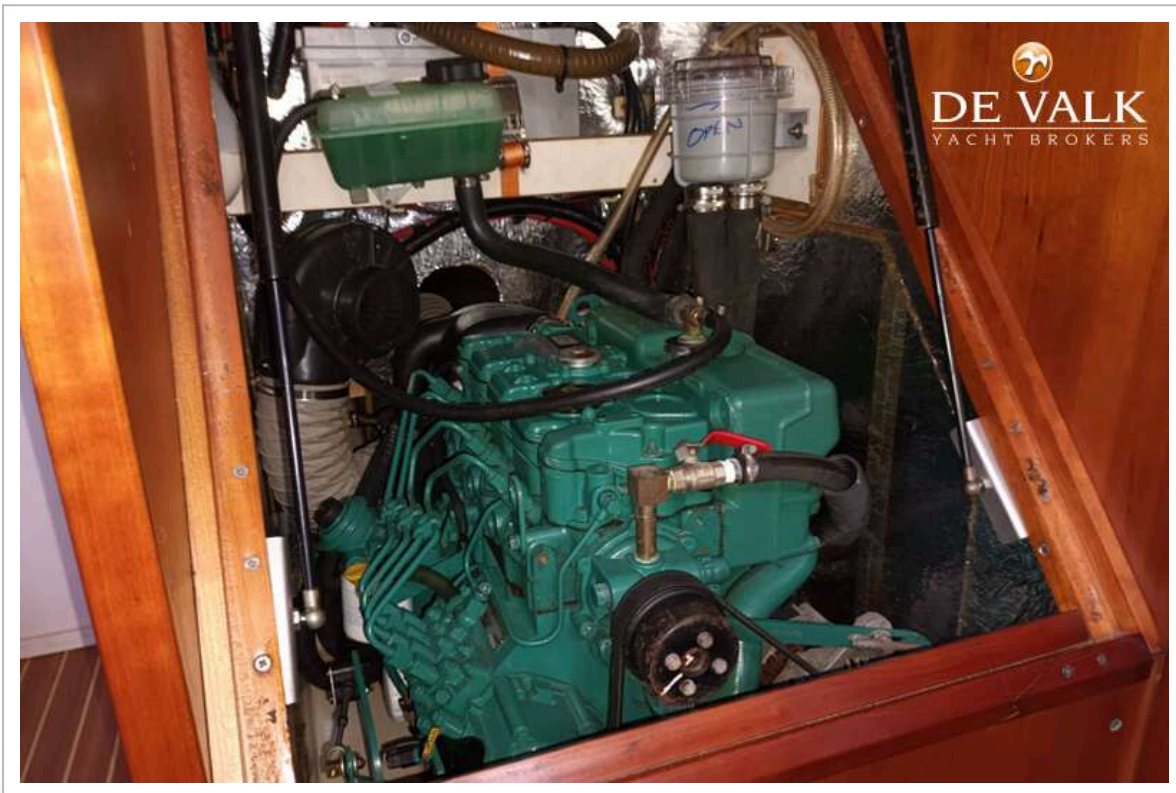
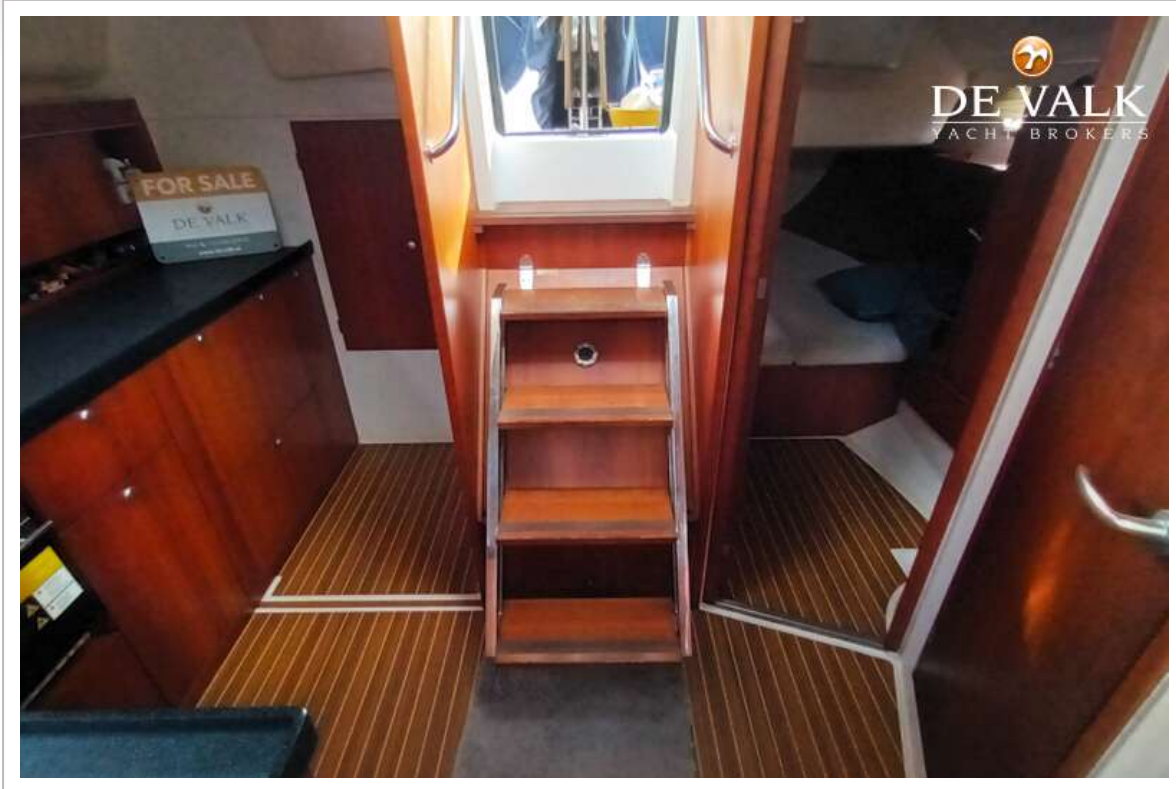


HANSE 415





HANSE 415



HANSE 415



HANSE 415

