



DE VALK

YACHT BROKERS

SEALINE T51 MOTOR YACHT



DE VALK
YACHT BROKERS

SEALINE T51 MOTOR YACHT

BROKER'S COMMENTS

This Sealine T51 is a fine example of British craftsmanship, offering a rare combination of voluminous living space and sporty offshore performance. Well maintained by her current owners and prepared for the upcoming season. Known for one of the most generous layouts in her class, this T51 features a light and airy interior with three full-size cabins and two bathrooms, an expansive flybridge, equipped with a wet bar and ample seating, making her an ideal choice for extended family stays on board.

Tue Simon Fasting

SPECIFICATIONS

| | | | |
|---------------------|----------------------------|----------------|------------------------------|
| Dimensions | 15.67 x 4.58 x 1.20 (m) | Builder | Sealine |
| Built | 2003 | Cabins | 3 |
| Material | GRP | Berths | 6 |
| Engine(s) | 2 x Volvo Penta D12 diesel | Hp/Kw | 2 x 640.00 (hp), 471.04 (kw) |
| Asking price | € 245.000 (VAT Paid) | Lying | at sales office |

CONTACT

| | | | |
|---------------------|---|------------------|---------------------|
| Sales office | De Valk Barcelona | Telephone | +34 932 202 825 |
| Address | Barcelona region 08392 Barcelona ES | E-mail | barcelona@devalk.nl |

DISCLAIMER

These particulars are given in good faith as supplied but cannot be guaranteed.



SEALINE T51 MOTOR YACHT

GENERAL

| | |
|------------------------------------|-------------------------|
| Model | SEALINE T51 MOTOR YACHT |
| Type | motor yacht |
| LOA (m) | 15,67 |
| Beam (m) | 4,58 |
| Draft (m) | 1,20 |
| Year built | 2003 |
| Builder | Sealine |
| Country | United Kingdom |
| Designer | Sealine Yachts U.K. |
| Displacement (t) | 18 |
| Gross tonnage | 46,5 |
| CE norm | B |
| Hull material | GRP |
| Hull colour | white |
| Hull shape | deep-V |
| Superstructure material | GRP |
| Deck material | GRP |
| Deck finish | teak |
| Antifouling (year) | And anodes 2026 |
| Window frame | aluminium |
| Window material | tempered glass |
| Deckhatch | yes |
| Portholes | yes |
| Insulation | yes |
| Flybridge | yes |
| Flybridge cover | yes |
| Radar arch | non collapsible |
| Fuel tank (litre) | Total 2000 |
| Level indicator (fuel tank) | yes |
| Fuel daytank (litre) | yes |



SEALINE T51 MOTOR YACHT

| | |
|------------------------------|----------------------------|
| Level indicator (daytank) | yes |
| Freshwater tank (litre) | 600 |
| Level indicator (freshwater) | yes |
| Blackwater tank (litre) | 150 |
| Level indicator (blackwater) | yes |
| Blackwater tank extraction | pump |
| Wheel steering | electric |
| Inside helm position | yes |
| Flybridge helm position | electric |
| Extra info | New flaps installed (2026) |

ACCOMMODATION

| | |
|------------------|--|
| Cabins | 3 |
| Berths | 6 |
| Interior | cherry |
| Layout | Forward master with 2 guest cabins. Open salon / gally / bridge. |
| Floor | teak |
| Aft deck | yes |
| Saloon | Luxurious 2 level saloon incl. galley - designed for comfort. |
| Heating | yes |
| Air-conditioning | single cycle airco |
| Galley | yes |
| Countertop | corian |
| Sink | stainless steel |
| Cooker | electric |
| Oven | yes |
| Extractor | yes |
| Microwave | yes |
| Fridge | yes |
| Freezer | yes |
| Hot water system | 220V |



SEALINE T51 MOTOR YACHT

| | |
|-----------------------------|-------------------------|
| Water pressure system | electrical |
| Ice maker | yes |
| Crockery | yes |
| Owners cabin | double bed |
| Wardrobe | hanging/drawers/shelves |
| Bathroom | en suite |
| Toilet | en suite |
| Toilet system | electric |
| Shower | en suite |
| Guest cabin 1 | double bed |
| Wardrobe | drawers and shelves |
| Bathroom | en suite |
| Toilet | en suite |
| Toilet system | electric |
| Shower | en suite |
| Guest cabin 2 | double bed |
| Wardrobe | drawers and shelves |
| Bathroom | shared |
| Toilet | shared |
| Toilet system | electric |
| Shower | shared |
| Washing machine/dryer combi | yes |

MACHINERY

| | |
|----------------|-------------|
| No of engines | 2 |
| Make | Volvo Penta |
| Type | D12 |
| HP | 640 |
| kW | 471.04 |
| Fuel | diesel |
| Year installed | 2003 |



SEALINE T51 MOTOR YACHT

| | |
|--------------------------|-------------------------------|
| Maximum speed (kn) | 28 |
| Cruising speed (kn) | 22 |
| Engine cooling system | freshwater heat exchanger |
| Drive | shaft |
| Shaft seal | yes |
| Engine controls | electrical |
| Gearbox | mechanical |
| Bowthruster | electric |
| Sternthruster | electric Refurbished 2018 |
| Gearbox | hydraulic |
| Exhaust | watercooled |
| Propeller type | fixed Twin |
| Propeller blades | 4 (25 diameter / 32,50 pitch) |
| Propeller shaft material | stainless steel |
| Shaft lubrication | yes |
| Manual bilge pump | yes |
| Electric bilge pump | yes |
| Bilge alarm | yes |
| Generator | Kohler |
| Start battery | 2 X 12V165Amp |
| Service battery | 4 X 12V 230Amp (2026) |
| Generator battery | 12V 165Amp |
| Bowthruster battery | yes |
| Sternthruster battery | yes |
| Battery charger | yes |
| Inverter | yes |
| Shorepower | with cable |

NAVIGATION

| | |
|------------------|-----|
| Compass | yes |
| Electric compass | yes |



SEALINE T51 MOTOR YACHT

| | |
|------------------------|-----------|
| Depth sounder | Raymarine |
| VHF | Raymarine |
| VHF handheld | Raymarine |
| Autopilot | Raymarine |
| Rudder angle indicator | yes |
| Radar | Raymarine |
| GPS | Raymarine |
| Plotter/GPS | Raymarine |
| EPIRB | yes |
| Navigation lights | yes |

EQUIPMENT

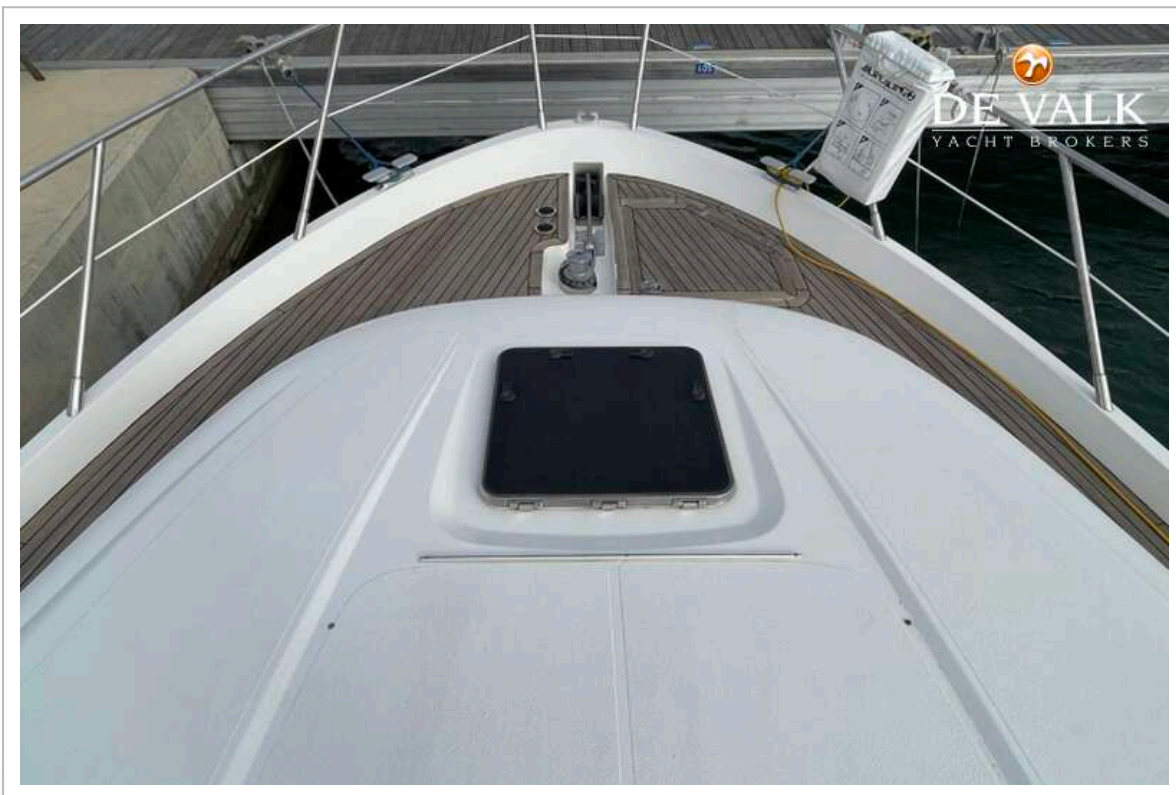
| | |
|-------------------|-------------------------------------|
| Fixed windscreen | yes |
| Bimini | 2020 |
| Bathing platform | yes |
| Boarding ladder | stainless steel |
| Gangway | Hydraulic |
| Anchor | Delta 25kg |
| Anchor chain | 50 m / 12mm |
| Windlass | Reversible electric anchor windlass |
| Capstan | 2 X Simpson Lawrence |
| Life raft | yes |
| Lifejackets | yes |
| Fenders | yes |
| TV | In salon and master cabin |
| Fire extinguisher | yes |



SEALINE T51 MOTOR YACHT



SEALINE T51 MOTOR YACHT



SEALINE T51 MOTOR YACHT



SEALINE T51 MOTOR YACHT



SEALINE T51 MOTOR YACHT



SEALINE T51 MOTOR YACHT



SEALINE T51 MOTOR YACHT



SEALINE T51 MOTOR YACHT



SEALINE T51 MOTOR YACHT



SEALINE T51 MOTOR YACHT



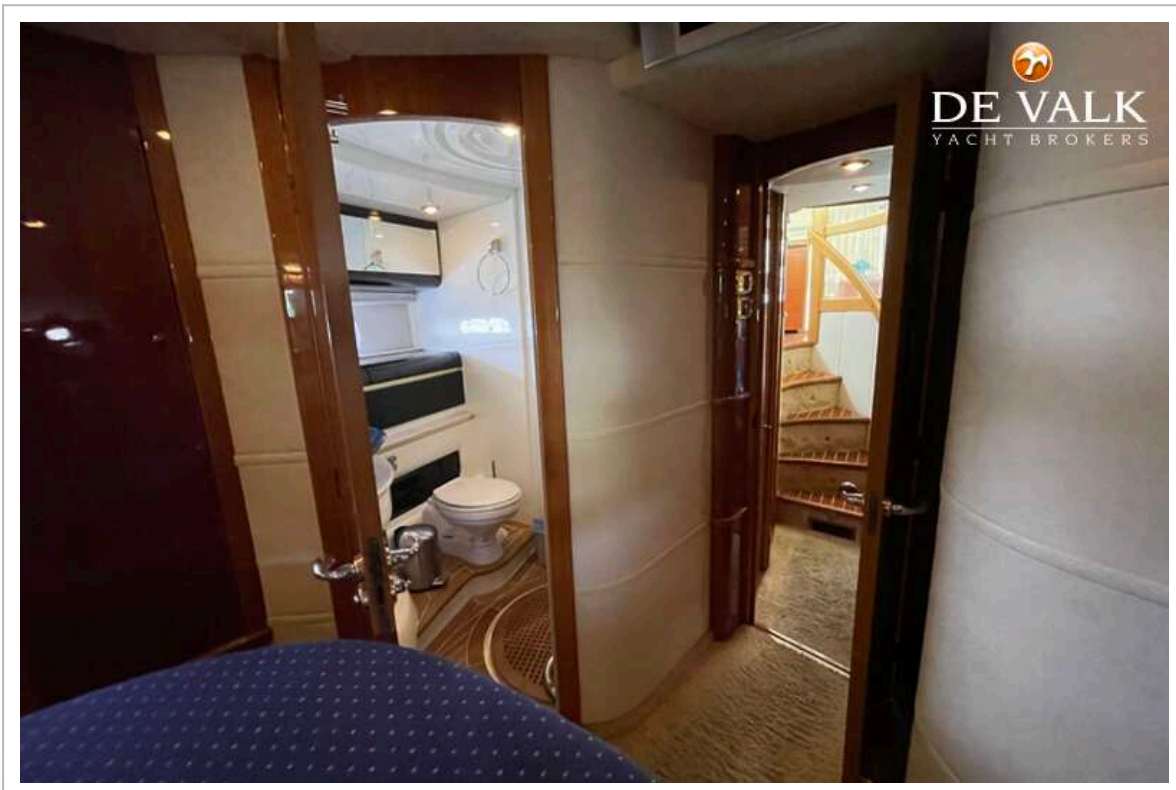
SEALINE T51 MOTOR YACHT



SEALINE T51 MOTOR YACHT



SEALINE T51 MOTOR YACHT



SEALINE T51 MOTOR YACHT



SEALINE T51 MOTOR YACHT



SEALINE T51 MOTOR YACHT

