



DE VALK
YACHT BROKERS



HANSE 545E



DE VALK
YACHT BROKERS

BROKER'S COMMENTS

This Hanse 545E, designed by Judel/Vrolijk & Co, is a well maintained 3-cabin version with an additional crew cabin, combining performance, comfort, and modern styling. Featuring three double cabins, two bathrooms, and a crew cabin, she is ideal for family cruising or entertaining guests. With numerous recent upgrades, this spacious and stylish Hanse 545E represents a great opportunity for sailors seeking a reliable, fully equipped, and ready-to-sail yacht.

Joris van de Rijt

SPECIFICATIONS

| | | | |
|---------------------|----------------------------|----------------|---------------------------------|
| Dimensions | 16.20 x 4.91 x 2.43 (m) | Builder | Hanse Yachts |
| Built | 2010 | Cabins | 3 |
| Material | GRP | Berths | 7 |
| Engine(s) | 1 x Yanmar 4JH4-HTE diesel | Hp/Kw | 110.00 (hp), 80.96 (kw) |
| Asking price | € 275.000 (VAT Paid) | Lying | elsewhere / Not at sales office |

CONTACT

| | | | |
|---------------------|--|------------------|------------------------|
| Sales office | De Valk Sint Annaland B.V. | Telephone | +31 166 601 000 |
| Address | Koelhuisweg 4 4697 RM Sint Annaland NL | E-mail | sintannaland@devalk.nl |

DISCLAIMER

These particulars are given in good faith as supplied but cannot be guaranteed.



HANSE 545E

GENERAL

| | |
|------------------------------------|---|
| Model | HANSE 545E |
| Type | sailing yacht |
| LOA (m) | 16,20 |
| LWL (m) | 14,60 |
| Beam (m) | 4,91 |
| Draft (m) | 2,43 |
| Air draft (m) | 26,25 |
| Headroom (m) | 2,00 |
| Year built | 2010 |
| Builder | Hanse Yachts |
| Country | Germany |
| Designer | Judel & Vrolijk |
| Displacement (t) | 18,7 |
| Ballast (tonnes) | cast iron and lead 5,8 |
| CE norm | A |
| Hull material | GRP |
| Hull colour | white With grey striping |
| Hull shape | round-bilged |
| Keel type | fin keel with bulb 2023 sandblasted, new primer + antifouling |
| Superstructure material | GRP |
| Deck material | GRP |
| Deck finish | teak (new sealant 2020) |
| Cockpit deck finish | teak (new sealant 2020) |
| Antifouling (year) | 2026 |
| Window material | perspex |
| Deckhatch | yes |
| Portholes | 8 x horizontal + 4 x vertical |
| Radar arch | On stern |
| Fuel tank (litre) | 400 |
| Level indicator (fuel tank) | yes |



| | |
|-------------------------------------|--|
| Freshwater tank (litre) | 700 |
| Level indicator (freshwater) | yes |
| Blackwater tank (litre) | 2 x |
| Blackwater tank extraction | deck extraction + uw line |
| Wheel steering | 2 x Jefa (new leather on steering wheels 2025) |
| Emergency tiller | yes |

ACCOMMODATION

| | |
|------------------------------|---|
| Cabins | 3 |
| Berths | 7 |
| Floor | woodprint |
| Open cockpit | yes |
| Aft deck | yes |
| Saloon | yes |
| Headroom saloon (m) | 2,00 |
| Heating | central hot water Eberspacher Hydronic M12 |
| Air-conditioning | single cycle airco 3 units |
| Chart table | yes |
| Aft Cabin | 2 x |
| Dinette | yes |
| Galley | yes |
| Countertop | corian With an additional foldable section |
| Sink | stainless steel |
| Cooker | calor gas 3 burner |
| Oven | yes |
| Microwave | AEG |
| Fridge | Isotherm top/front loader + Waeco frontloader |
| Freezer | yes |
| Hot water system | 220V + engine |
| Water pressure system | electrical |
| Coffee maker | yes |



| | |
|----------------------|--------------------------|
| Owners cabin | French bed |
| Wardrobe | hanging/drawers/shelves |
| Bathroom | en suite |
| Toilet | en suite |
| Toilet system | electric |
| Wash basin | in the bathroom |
| Shower | en suite |
| Guest cabin 1 | double bed Portside |
| Wardrobe | hanging and shelves |
| Bathroom | shared |
| Toilet | shared |
| Toilet system | electric |
| Wash basin | in the bathroom |
| Shower | shared |
| Guest cabin 2 | double bed |
| Wardrobe | hanging and shelves |
| Crew cabin(s) | Accessibel via deckhatch |
| Toilet (crew) | yes |
| Tender garage | yes |

MACHINERY

| | |
|------------------------------|---------------------------|
| No of engines | 1 |
| Make | Yanmar |
| Type | 4JH4-HTE |
| HP | 110 |
| kW | 80.96 |
| Fuel | diesel |
| Year installed | 2010 |
| Engine hours | 2630 |
| Engine cooling system | freshwater heat exchanger |
| Drive | shaft |



| | |
|---------------------------------|---|
| Engine controls | bowden cable |
| Gearbox | yes |
| Bowthruster | electric Retractable |
| Thrust bearing | (new 2025) |
| Propeller type | folding Flexofold |
| Propeller blades | 3 |
| Propeller shaft material | stainless steel (new shaft bearings 2025) |
| Manual bilge pump | yes |
| Electric bilge pump | yes |
| Electrical installation | 12V / 24V / 230V |
| Generator | Fisher Panda 6000i |
| Running hours generator | Approx 500 |
| Start battery | (2022) |
| Service battery | 4 x Victron 165 Ah AGM (2025) |
| Generator battery | yes |
| Bowthruster battery | 2 x 72Ah (2024) |
| Battery monitor | Victron |
| Battery charger/inverter | Victron Quattro 12V /120Ah / 3000Watt |
| Shorepower | with cable |

NAVIGATION

| | |
|------------------------|--|
| Compass | yes |
| Depth sounder | Simrad IS 20 |
| Log | Simrad IS 20 |
| Windset | Simrad IS 20 |
| VHF | Simrad RS37 DSC |
| VHF handheld | (2021) |
| Autopilot | Simrad AP 24 + WR 20 remote (new drive 2020) |
| Radar | Simrad |
| Plotter | B&G Zeus 3S 12 (2021) |
| AIS transponder | Simrad |



| | |
|-------------------|-----------------------|
| Navigation lights | LED |
| Extra info | Walkie-Talki Motorola |

EQUIPMENT

| | |
|----------------------------|--|
| Sprayhood | (2024) |
| Bimini | (2023) |
| Winter cover | yes |
| Cockpit cushions | yes |
| Cockpit table | Foldable |
| Bathing platform | Electric (big storage behind) |
| Boarding ladder | stainless steel |
| Gangway | Carbon 2,60m foldable (2022) |
| Deck shower | yes |
| Anchor | CQR Plough |
| Anchor chain | 100m 10mm |
| Windlass | electrical Lofrans 1500 Watt |
| Deck wash | yes |
| Dinghy | rigid inflatable Zodiac 3,20m Cadet (2020) |
| Outboard | Honda 8pk (2007) |
| Davits | stainless steel |
| Davits controls | manual |
| Sea railing | stainless steel |
| Grab rail (superstructure) | stainless steel |
| Railing side opening gates | 2 x |
| Lifebuoy | 2 x |
| Fenders | yes |
| Mooring lines | yes |
| TV | At charttable |
| Radio-cd player | Kenwood |
| Cockpit speakers | yes |
| Speakers in salon | yes |



Fire extinguisher yes

RIGGING

| | |
|--------------------------------------|---|
| Rigging | fractional |
| Standing rigging | wire |
| Brand mast | Seldén |
| Material mast | aluminium |
| Spreaders | 3 sets |
| Keel stepped mast | yes |
| Mainsail cover | Lazybag |
| Fully battened mainsail | Membrane 87m2 (2023) |
| Jib | Self tacking Jib 56m2 (2022) + spare Jib (2021) |
| Genoa | Membrane (2023) + spare Genoa |
| Genoa furler | yes |
| Self tacking jib installation | yes |
| Reefing System | quick-one-line-reefing 2 seperate lines to be controlled in cockpit |
| Backstay adjuster | hydraulic |
| Boomvang | gasspring |
| Primary sheet winch | 2 x Lewmar 54 electric |
| Secondary sheet winch | 2 x Lewmar 46 |



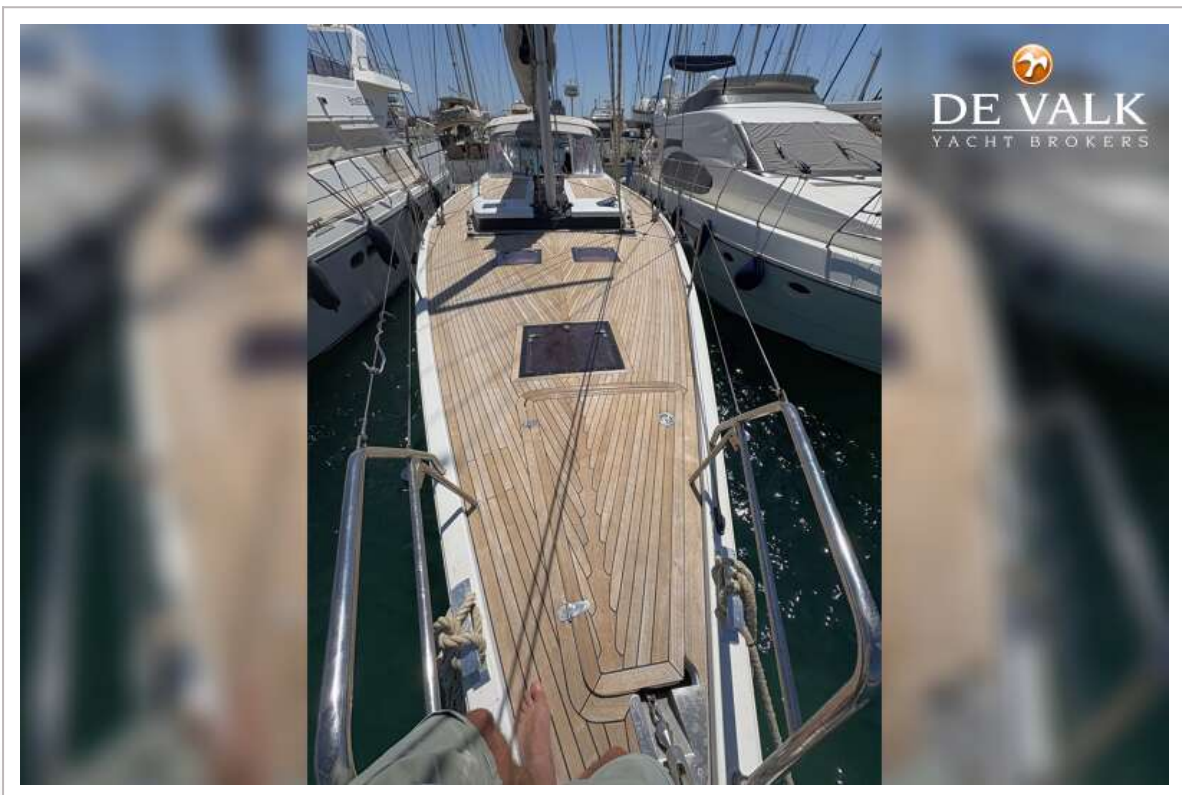
HANSE 545E



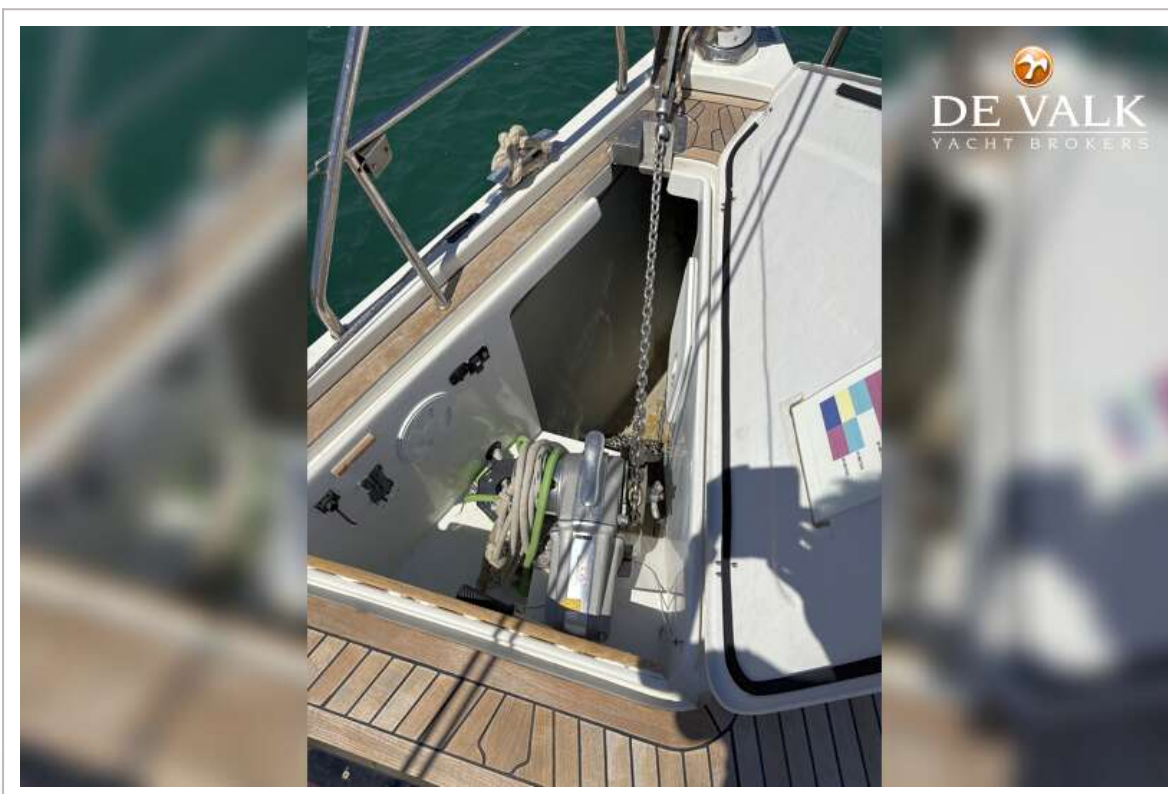
HANSE 545E



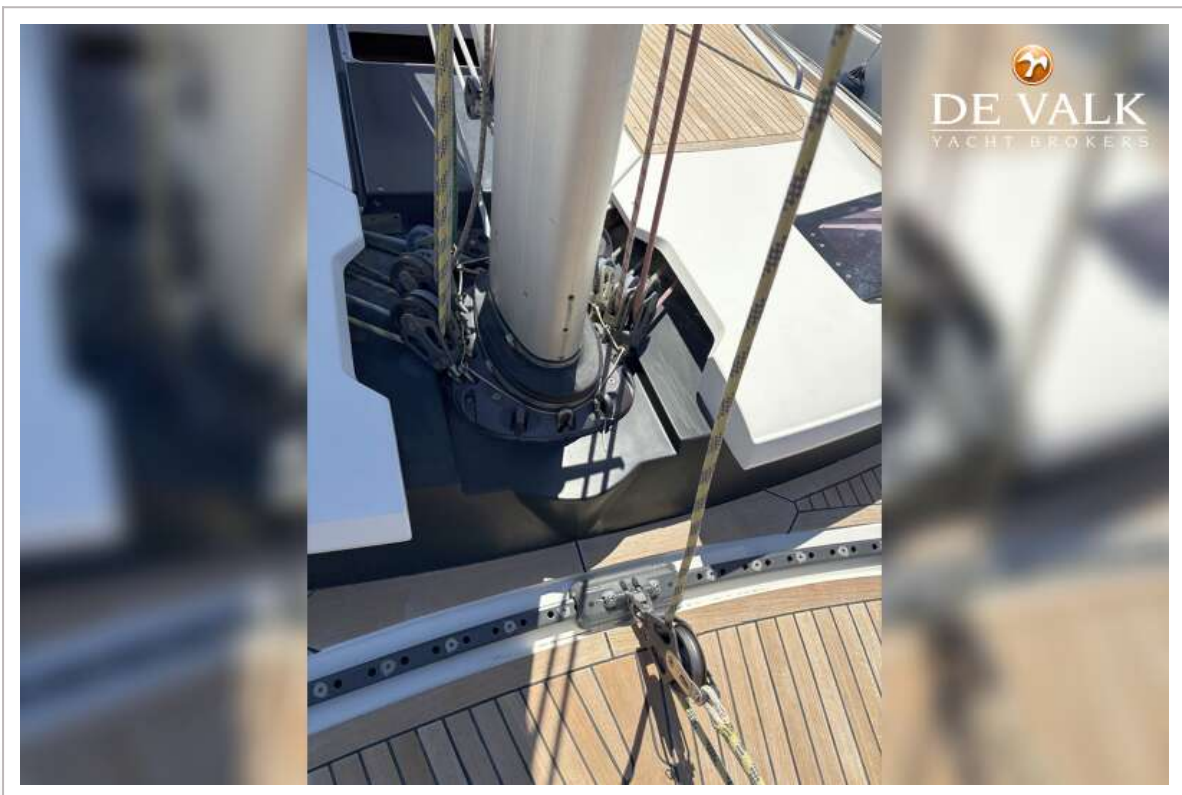
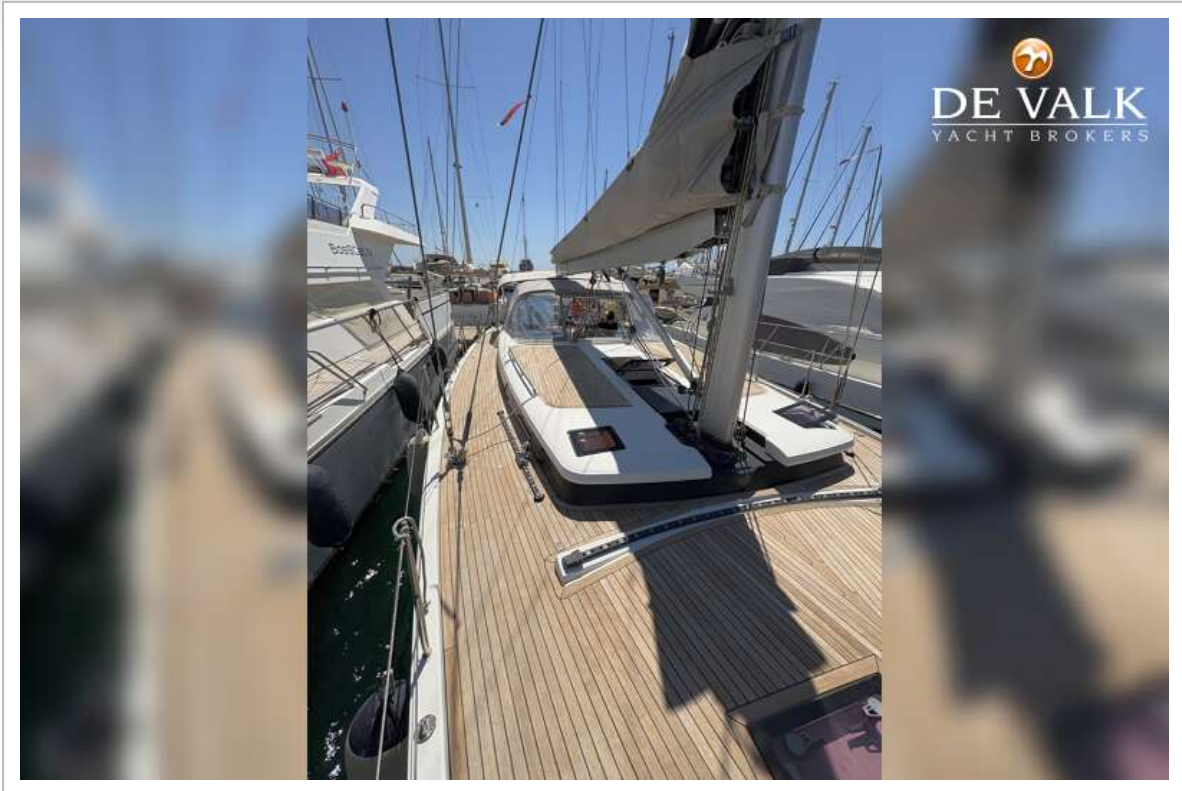
HANSE 545E



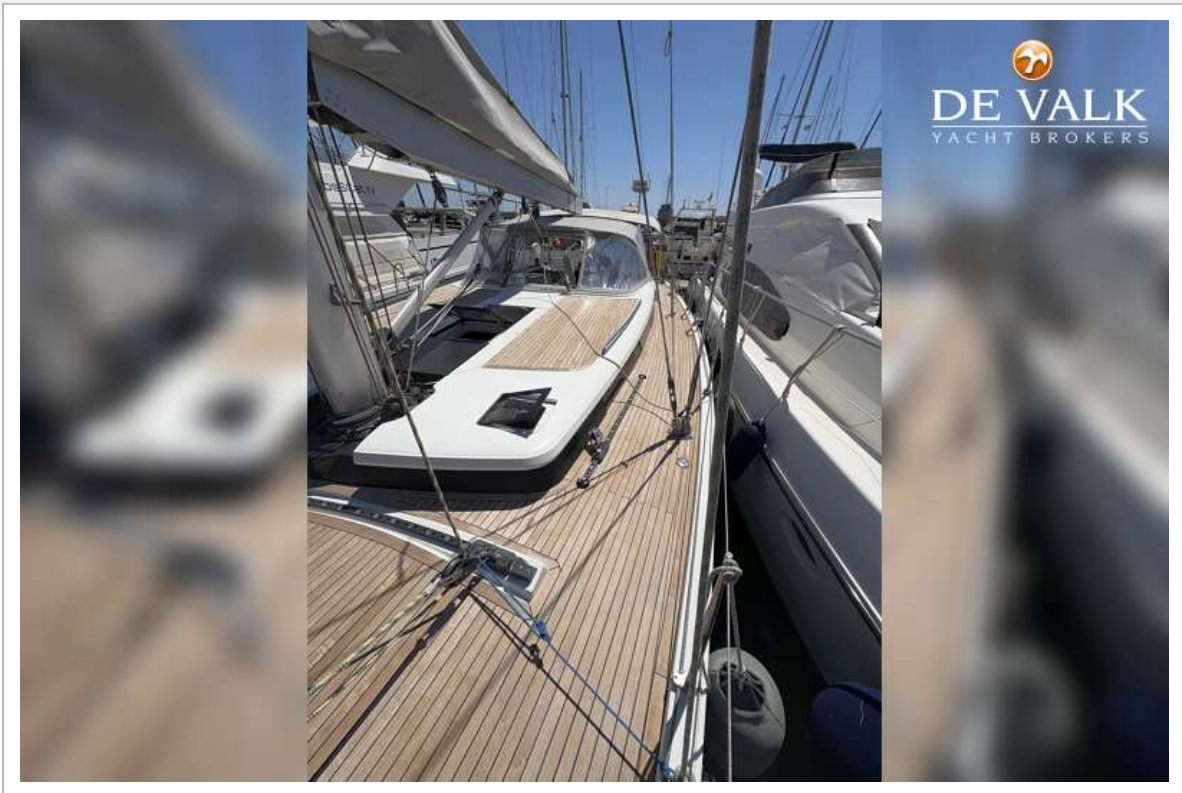
HANSE 545E



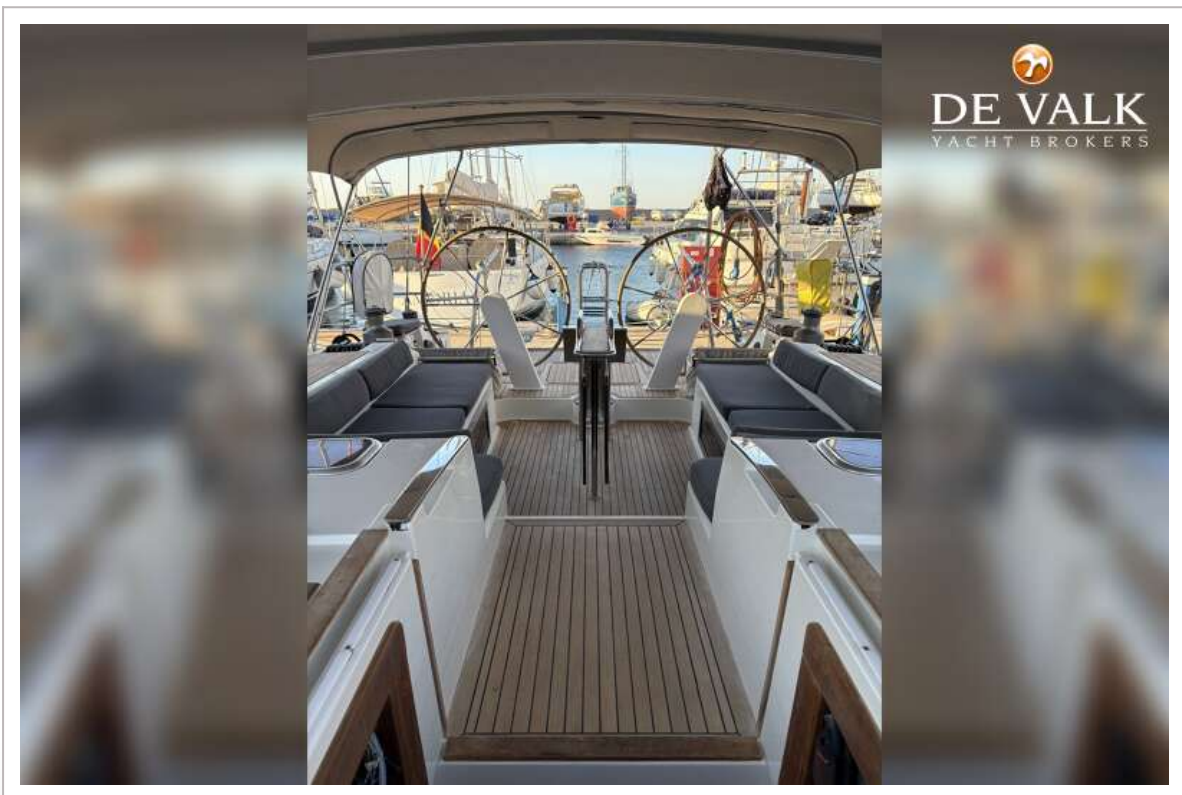
HANSE 545E



HANSE 545E



HANSE 545E



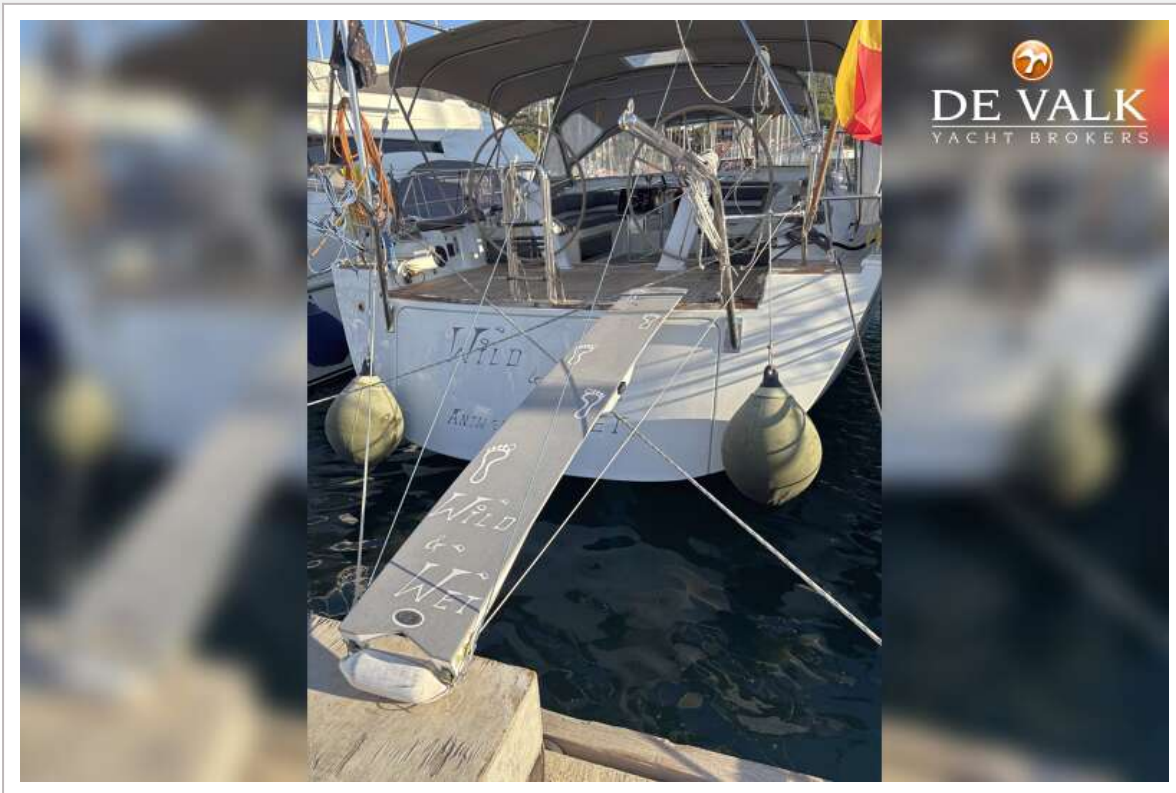
HANSE 545E



HANSE 545E



HANSE 545E



HANSE 545E



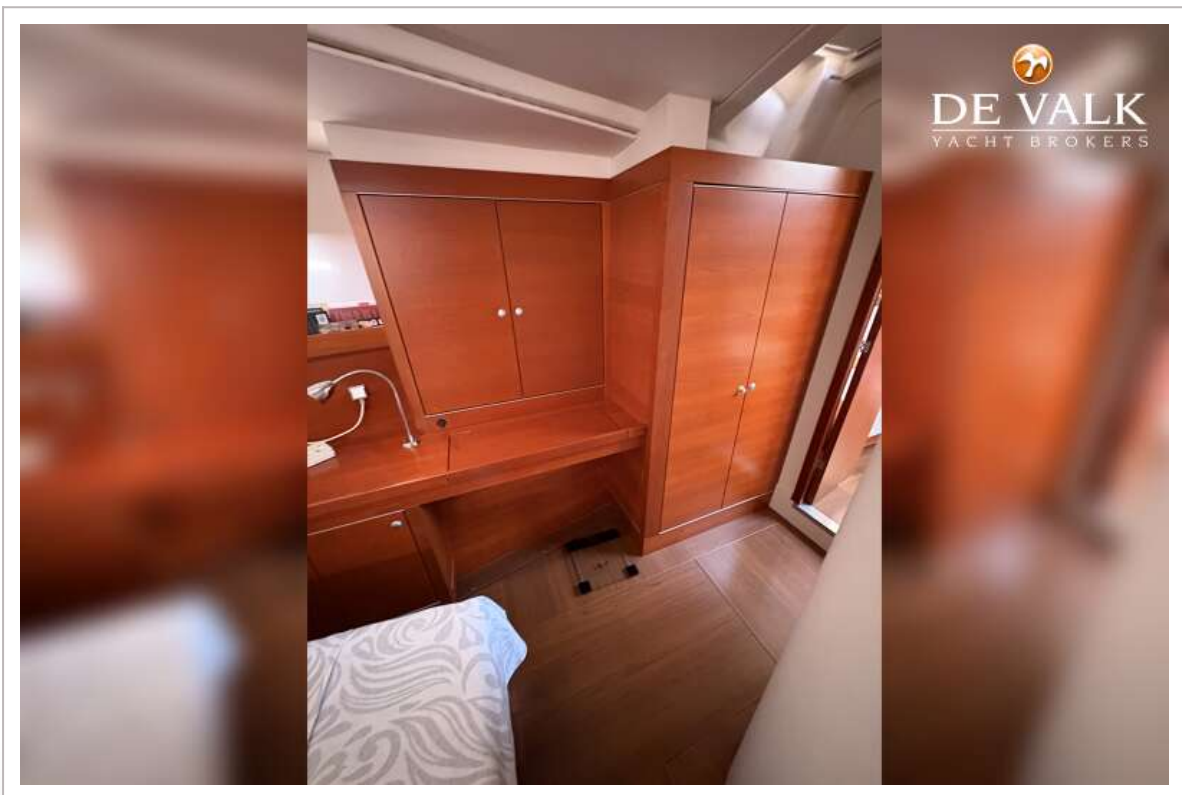
HANSE 545E



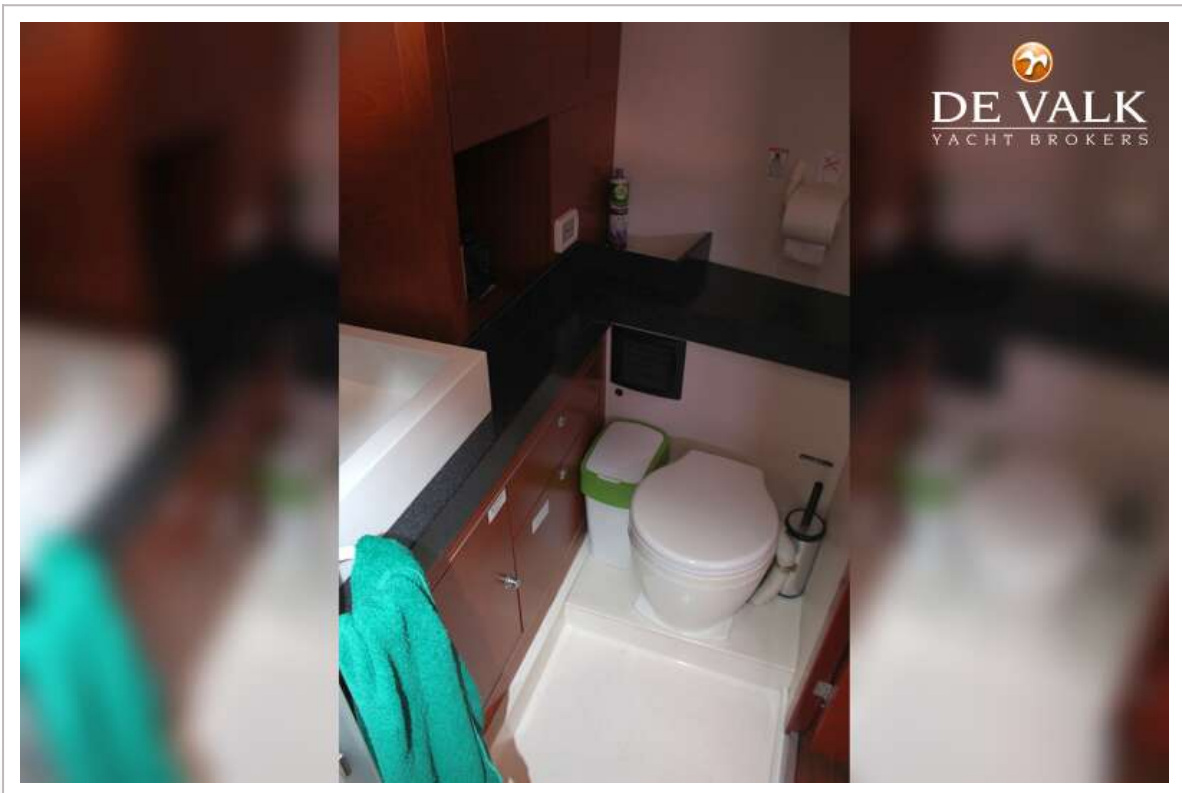
HANSE 545E



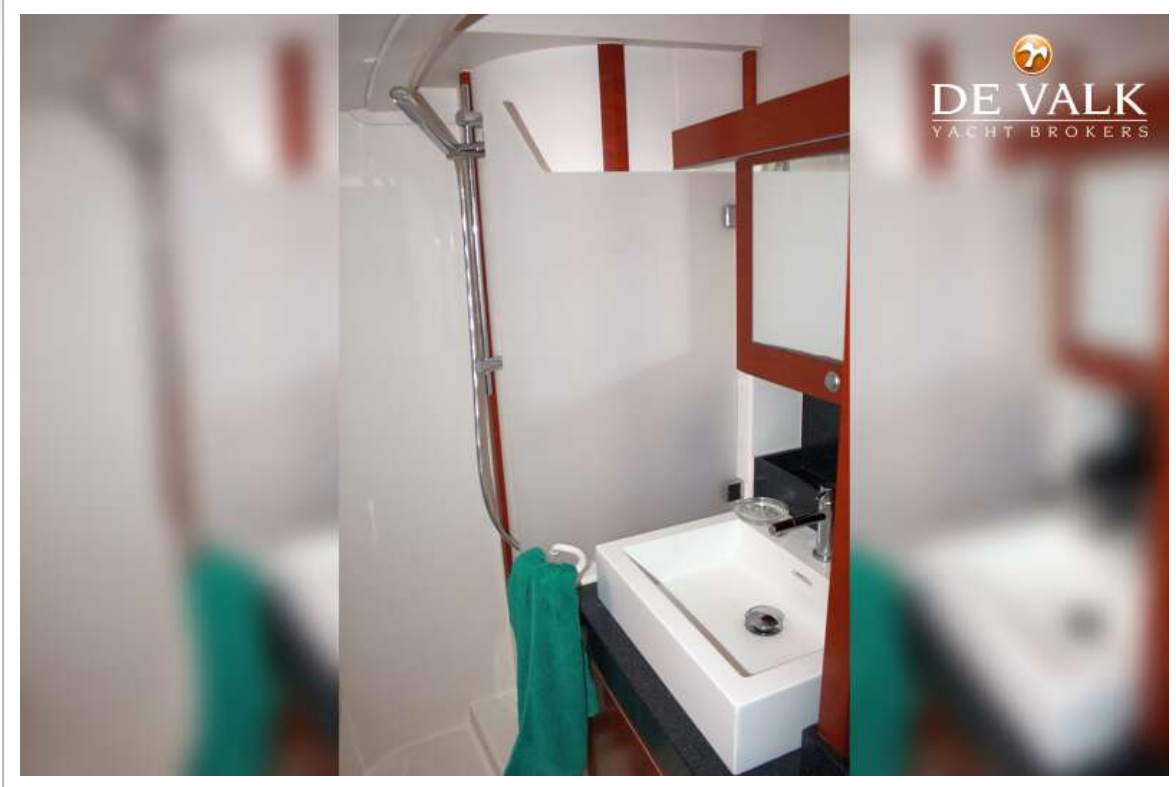
HANSE 545E



HANSE 545E



HANSE 545E



HANSE 545E



HANSE 545E



HANSE 545E



HANSE 545E

